



1403 27th STREET NW
PO BOX 98
MANDAN, ND 58554-0098
701-667-1800

November 21, 2019

Executive Secretary
North Dakota Public Service Commission
600 East Boulevard Ave – Dept. 408
Bismarck, ND 58505-0480

Please find enclosed two hardcopies of the Construction Inspection for PU-18-280. If you have questions, please contact Jaimee Antognazzi at 701-667-1800.

Sincerely,

A handwritten signature in black ink that reads "Jaimee Antognazzi". The signature is written in a cursive style with a large initial 'J'.

Jaimee Antognazzi, CSP
Operations Manager

Enclosures: Construction Inspection PU-18-280 (2 hardcopies)

Site/Project Location: Emmons and Logan Counties, ND

Date of Inspection: 5 November 2019

Keitu staff visited the Emmons Logan Wind Farm project for a construction inspection. Inspection of construction sites focused on (1) confirming surface disturbance/work occurring within ND PSC-approved work corridor and/or route; (2) topsoil segregation occurring; (3) vegetation removal consistent with tree & scrub mitigation plan; and (4) storm water runoff and sediment control.

Observed Work / Weather Conditions

Visit occurred between 10:30 a.m. to 2:00 p.m. The weather was clear and sunny, temperature at 28°F, winds at 5-10 mph out of the west and no precipitation.

The wind farm project has been underway since spring of 2019. Turbine sites are being completed starting with the sites in the northeast corner of the project and working towards the far southwest portion of the project.

Photo GPS points were taken during the inspection as a location reference for turbine site locations. Turbine sites that had been completed or were currently under construction that were located in close proximity to any determined exclusionary zones were visited. All turbine sites visited were located outside the determined exclusionary zones. Turbine sites visited during the inspection included sites 18, 19, 20, 21, 39, 51, 55, 56, and Alt3.

Top Soil Management / Condition / Erosion Control / Stormwater Management

During the inspection, stripped topsoil was noted along string roads and at turbine sites. Topsoil was appropriately segregated from the subsoil with it being piled along the opposite side of string roads and in separate piles at turbine sites. Erosion control and stormwater management BMPs were in good condition. At the time of the inspection, the ground was frozen.

Vegetation Condition

There were locations where trees were removed where underground cables were trenched through single row shelterbelts and string roads were constructed to turbine sites. The number of trees removed was very minimal. Emmons-Logan Wind, LLC will follow the tree and shrub mitigation plan submitted as part of their Application for Certificate of Site Compatibility. In several locations, string roads to turbine sites were constructed through agricultural fields currently in crop production.

Deficiencies

No deficiencies were noted during the construction inspection.

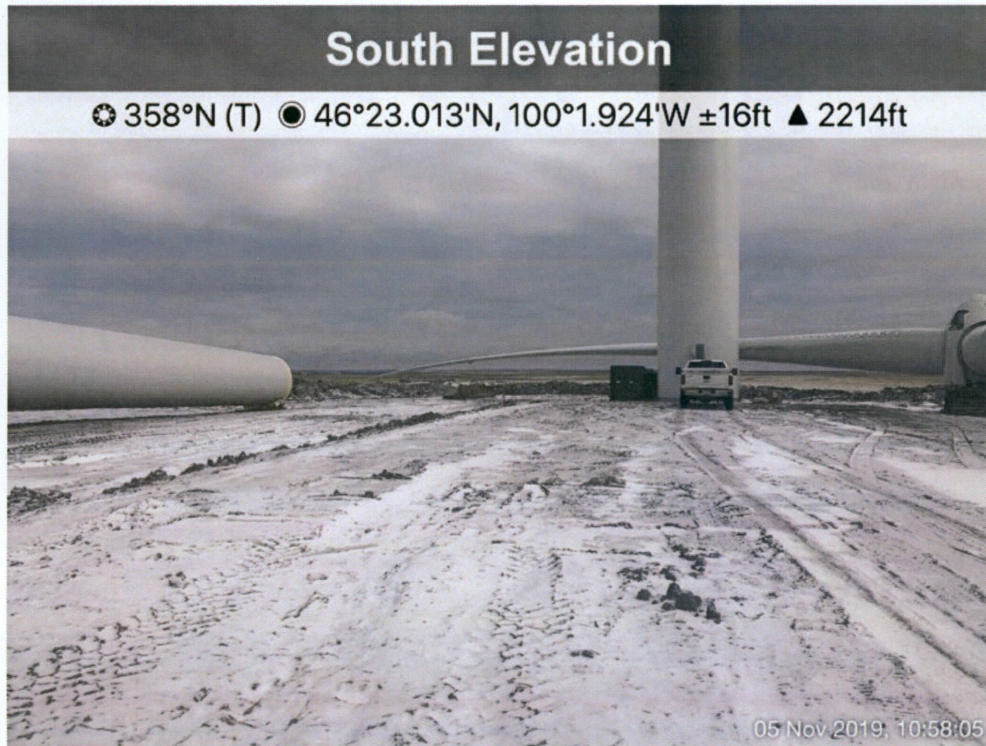
Actions Taken/To Be Taken

Erosion control and stormwater BMPs should continue to be routinely evaluated and replaced or repaired as necessary and pad sites smoothed out once construction on the sites is completed. Topsoil piles will be used to revegetate areas not used for permanent roads or turbine pads.

Keitu Inspector: ZAP

Inspection Report Submitted: 21 November 2019

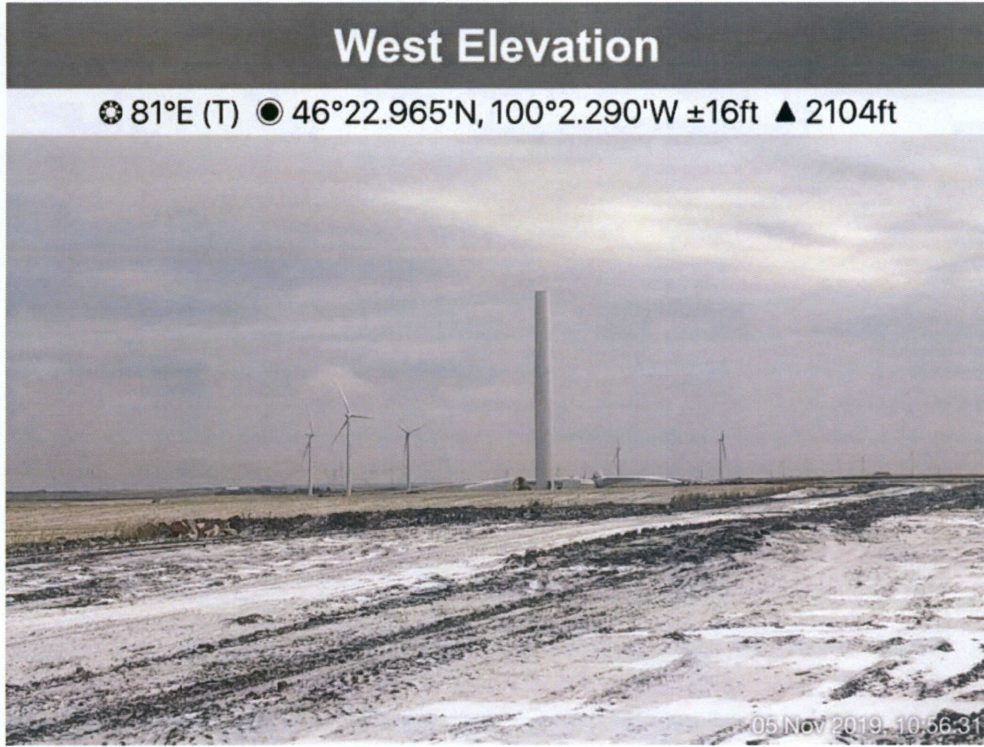
Report Photo #1 "Turbine Materials at Site 56"



Report Photo #2 "Tower Up and Turbine Components Ready to Install at Site 51"



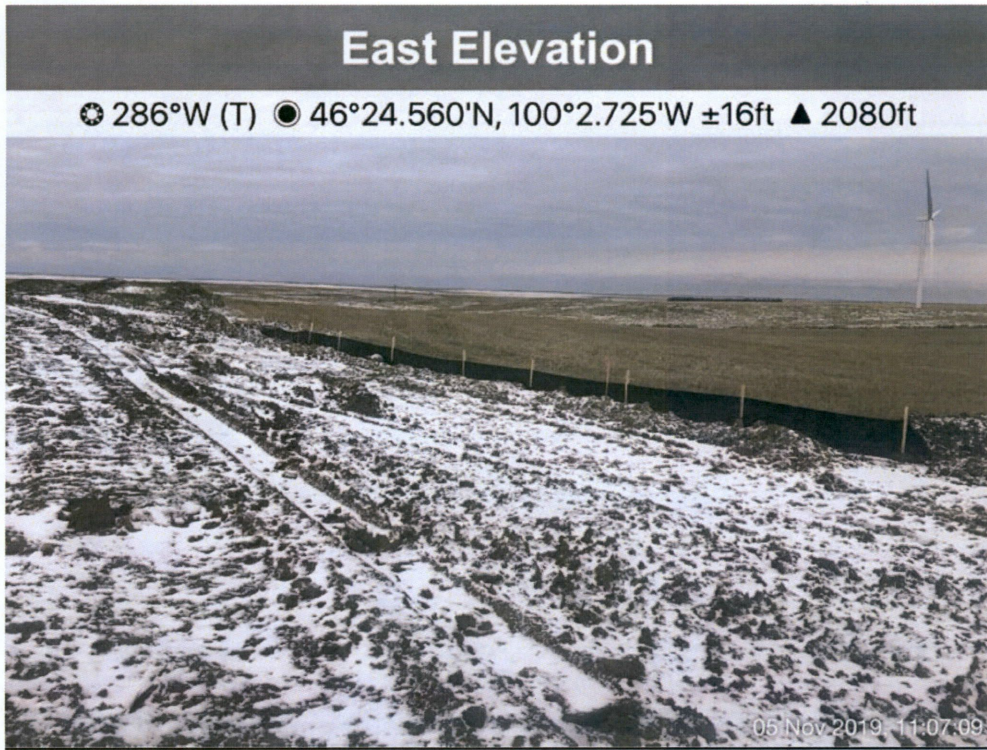
Report Photo #3 View of Wind Turbines near Completion



Report Photo #4 "Turbine Construction at Site 18"



Report Photo #5 "Sediment Fence in Place near Site 39"



Report Photo #6 "Newly Constructed Operations and Maintenance Building"



