

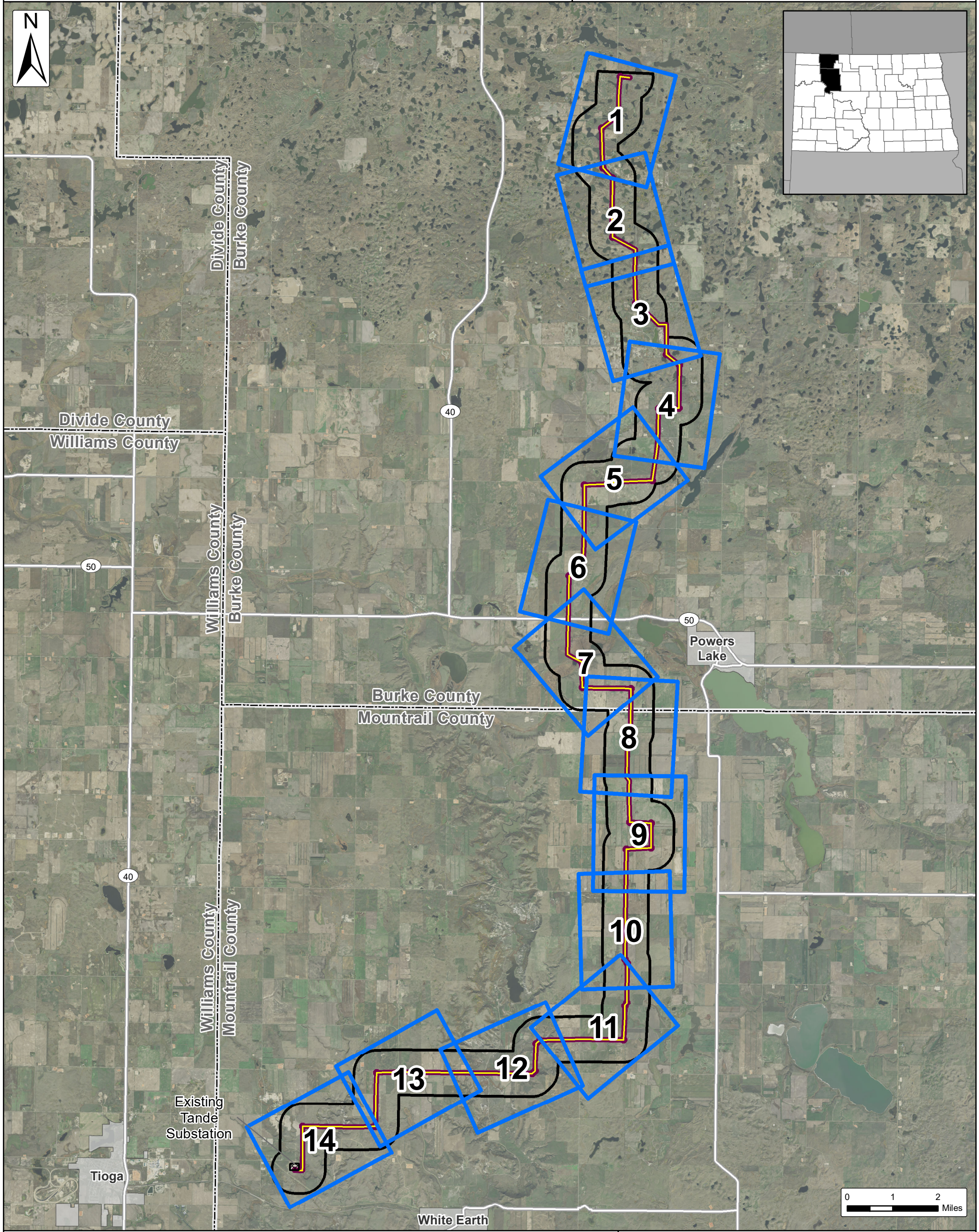
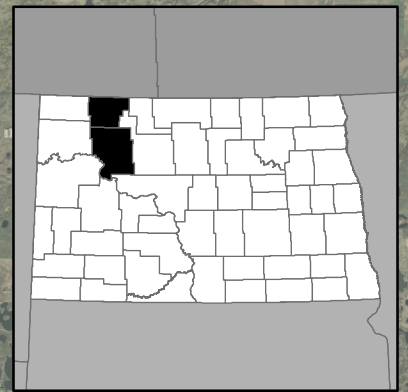
# Burke Wind Transmission Line

## Transmission Line Index Map





Burke County & Mountrail County, North Dakota

Client:  
**Burke Wind, LLC**



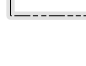
Issue Date:  
2/4/2019  
Atwell, LLC Project:  
16000947



**Project Plan**

-  Transmission Line
-  Transmission Line 150 ft. Project Corridor
-  Transmission Line 1 Mile Study Area
-  Existing Tande Substation

**Data**

-  Mapbook Pages
-  Cities
-  Counties



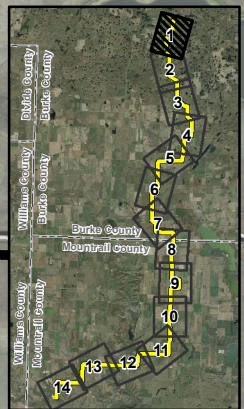
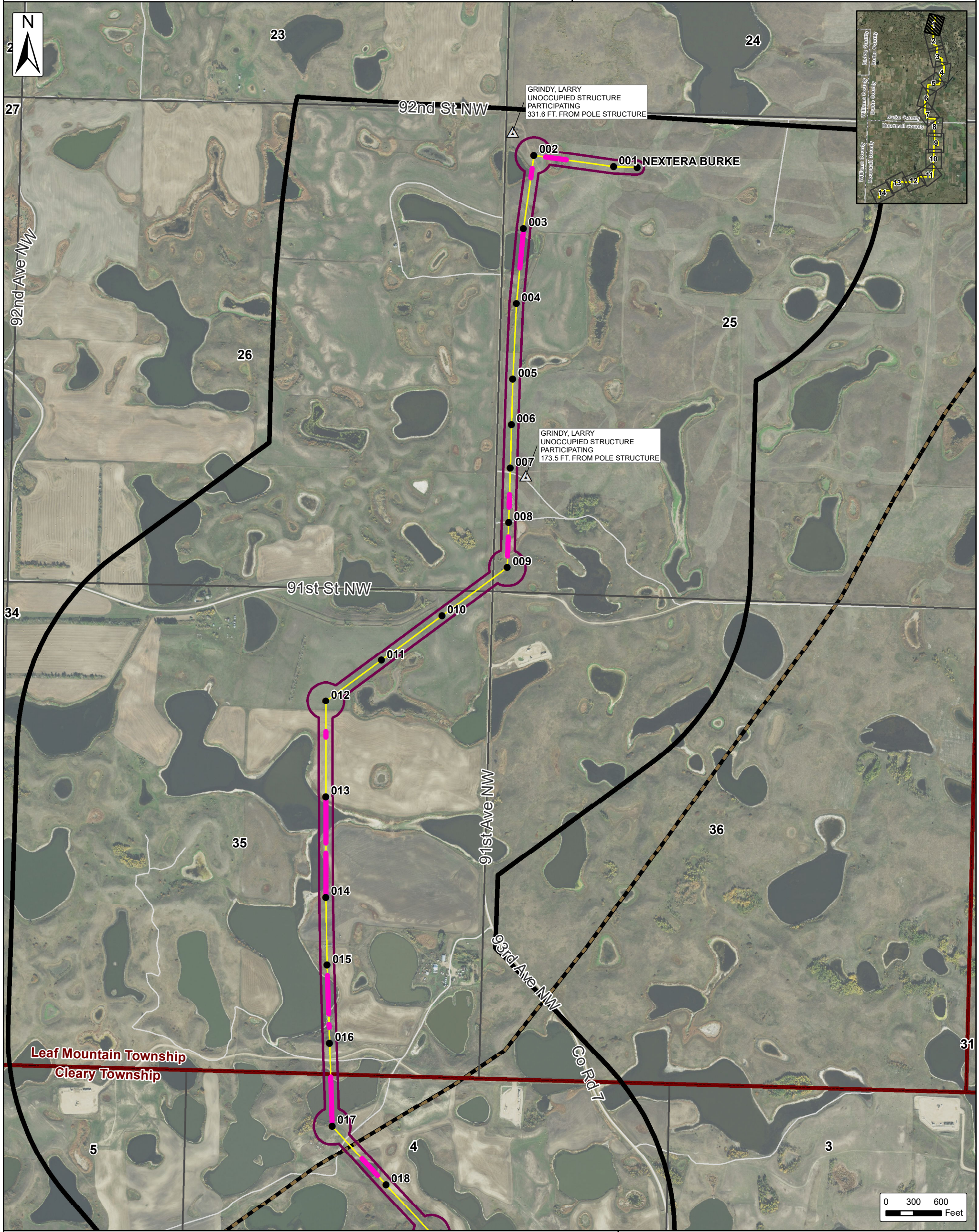
24 PU-18-302 Filed 02/06/2019 Pages: 15  
Final Corridor and Route Map Book  
Burke Wind, LLC  
Casey Furey, Crowley Fleck

SOURCE: USDA NAIP 2017

# Burke Wind Transmission Line

## Transmission Line Map

Burke County & Mountrail County, North Dakota



- Transmission Line Plan**
- Proposed Structures
  - Transmission Line
  - Aerial Overhead Crossing- No Direct Impacts Proposed
  - Transmission Line 150 ft. Project Corridor
  - Transmission Line 1 Mile Study Area
  - Existing Tande Substation

- Exclusion Areas**
- Archaeological Sites Not Shown Due to Confidentiality
- Avoidance Areas**
- Receptor 500 Ft. Avoidance Area
- Project Participation**
- △ Not Participating Occupied Receptor
  - △ Participating Unoccupied Structure
  - △ Not Participating Unoccupied Structure

- Data**
- Existing Natural Gas Pipeline (Velocity Suite)
  - Proposed Transmission (Velocity Suite)
  - Existing Transmission (Velocity Suite)
  - Landslide Deposits
  - Protected Areas (USGS)
    - Waterfowl Production Area
    - Wildlife Management Area

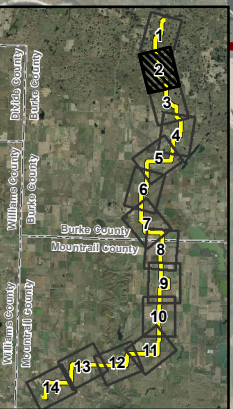
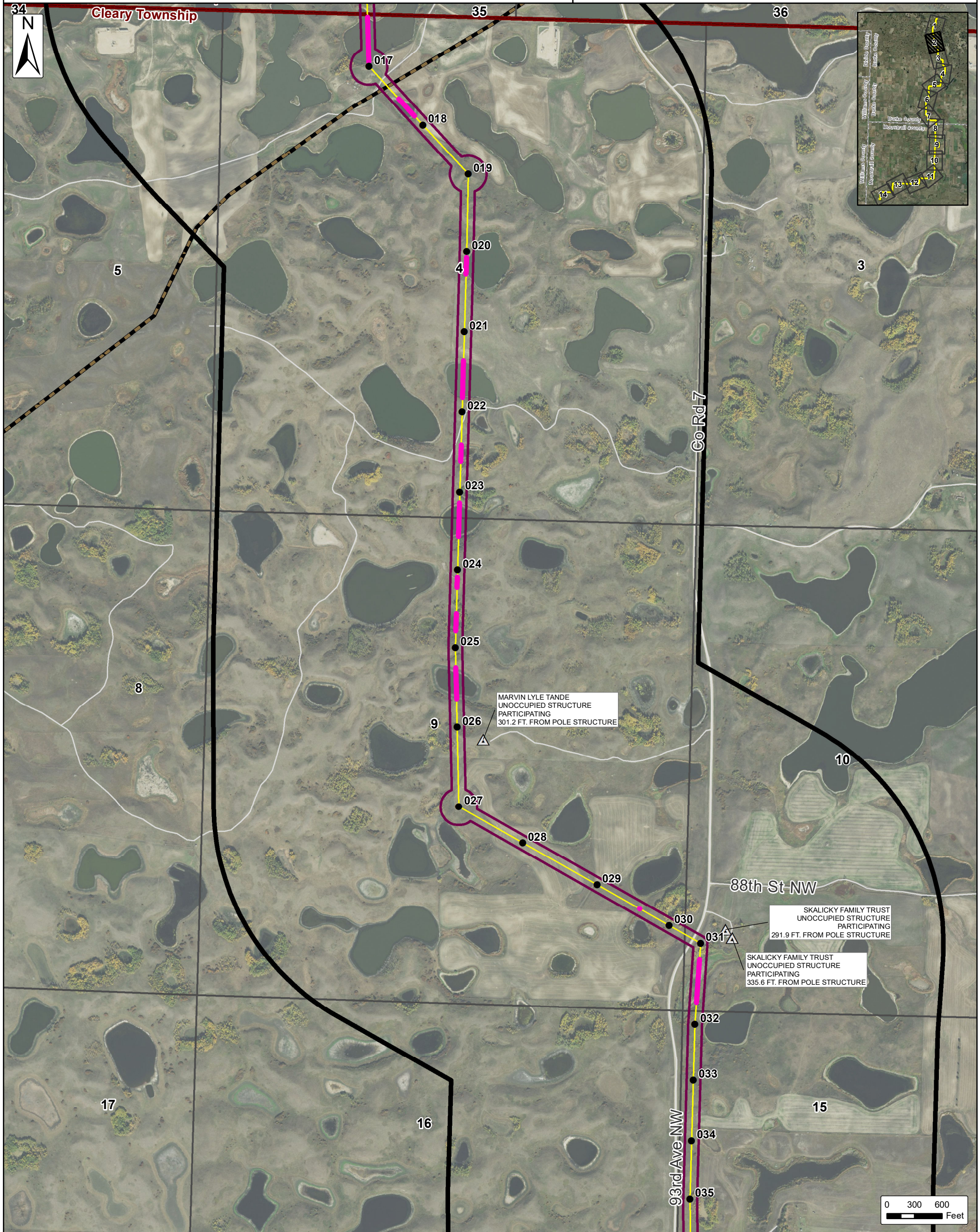
- Sections (PLSS)
- Townships (MCD)
- Counties



The information contained on this map is proprietary and confidential. The use or disclosure of this information by you to third parties is prohibited by law and may give rise to civil or criminal liability.

# Burke Wind Transmission Line Transmission Line Map

Burke County & Mountrail County, North Dakota



- Transmission Line Plan**
- Proposed Structures
  - Transmission Line
  - Aerial Overhead Crossing- No Direct Impacts Proposed
  - Transmission Line 150 ft. Project Corridor
  - Transmission Line 1 Mile Study Area
  - Existing Tande Substation

- Exclusion Areas**  
Archaeological Sites Not Shown Due to Confidentiality
- Avoidance Areas**  
○ Receptor 500 Ft. Avoidance Area
- Project Participation**
- △ Not Participating Occupied Receptor
  - △ Participating Unoccupied Structure
  - △ Not Participating Unoccupied Structure

- Data**
- Existing Natural Gas Pipeline (Velocity Suite)
  - Proposed Transmission (Velocity Suite)
  - Existing Transmission (Velocity Suite)
  - Landslide Deposits
  - Protected Areas (USGS)
    - Waterfowl Production Area
    - Wildlife Management Area

- Sections (PLSS)
- Townships (MCD)
- Counties

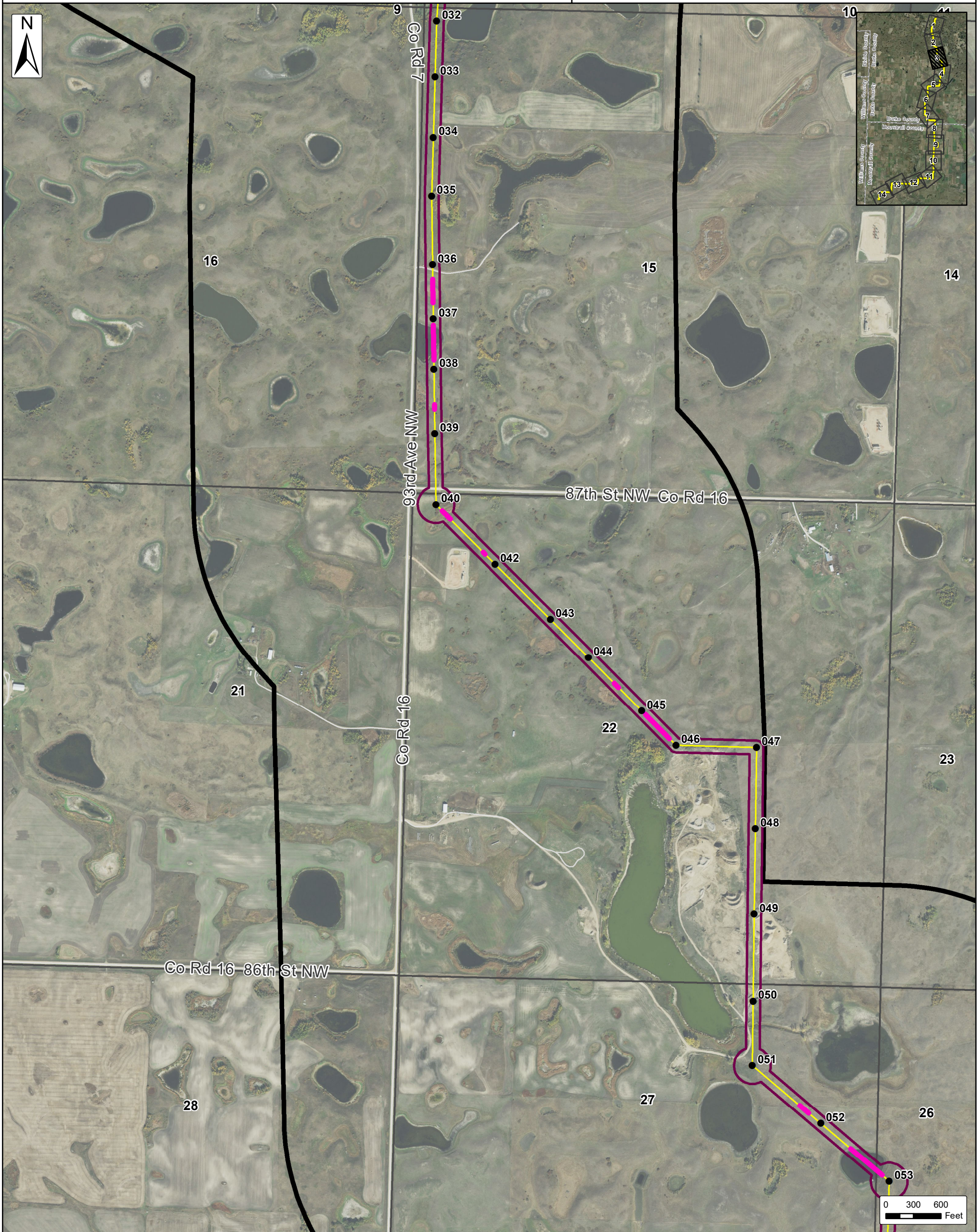


The information contained on this map is proprietary and confidential. The use or disclosure of this information by you to third parties is prohibited by law and may give rise to civil or criminal liability.

SOURCE: USDA NAIP 2017 IMAGERY

# Burke Wind Transmission Line Transmission Line Map

Burke County & Mountrail County, North Dakota



- Transmission Line Plan**
- Proposed Structures
  - Transmission Line
  - Aerial Overhead Crossing- No Direct Impacts Proposed
  - Transmission Line 150 ft. Project Corridor
  - Transmission Line 1 Mile Study Area
  - Existing Tande Substation

- Exclusion Areas**
- Archaeological Sites Not Shown Due to Confidentiality
- Avoidance Areas**
- Receptor 500 Ft. Avoidance Area
- Project Participation**
- △ Not Participating Occupied Receptor
  - △ Participating Unoccupied Receptor
  - △ Not Participating Unoccupied Structure

- Data**
- Existing Natural Gas Pipeline (Velocity Suite)
  - Proposed Transmission (Velocity Suite)
  - Existing Transmission (Velocity Suite)
  - Landslide Deposits
  - Protected Areas (USGS)
    - Waterfowl Production Area
    - Wildlife Management Area

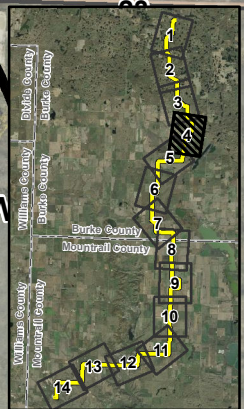
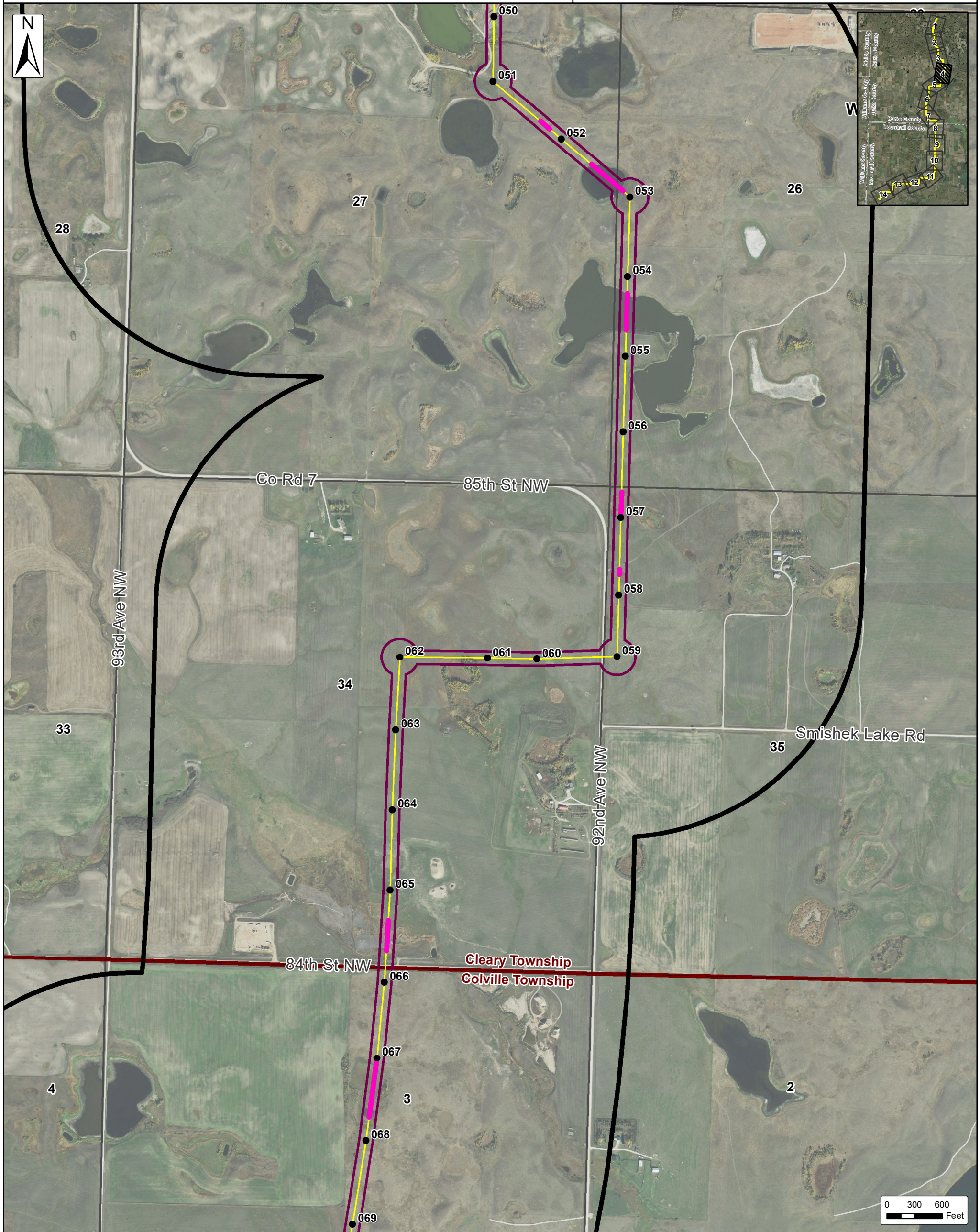
- Sections (PLSS)
- Townships (MCD)
- Counties



The information contained on this map is proprietary and confidential. The use or disclosure of this information by you to third parties is prohibited by law and may give rise to civil or criminal liability.

# Burke Wind Transmission Line Transmission Line Map

Burke County & Mountrail County, North Dakota



- Transmission Line Plan**
- Proposed Structures
  - Transmission Line
  - Aerial Overhead Crossing-  
No Direct Impacts Proposed
  - Transmission Line  
150 ft. Project Corridor
  - Transmission Line  
1 Mile Study Area
  - ⊠ Existing Tande Substation

- Exclusion Areas**  
Archaeological Sites Not Shown  
Due to Confidentiality
- Avoidance Areas**  
○ Receptor 500 Ft. Avoidance Area
- Project Participation**
- △ Not Participating Occupied Receptor
  - △ Participating Unoccupied Structure
  - △ Not Participating Unoccupied Structure

- Data**
- Existing Natural Gas  
Pipeline (Velocity Suite)
  - Proposed Transmission  
(Velocity Suite)
  - Existing Transmission  
(Velocity Suite)
  - Landslide Deposits
  - Protected Areas (USGS)  
Waterfowl Production Area  
Wildlife Management Area

- Sections (PLSS)
- Townships (MCD)
- Counties



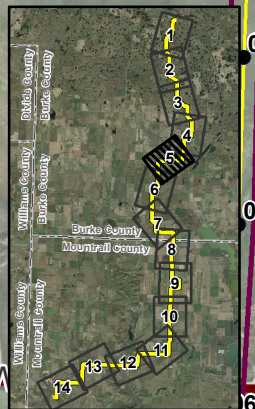
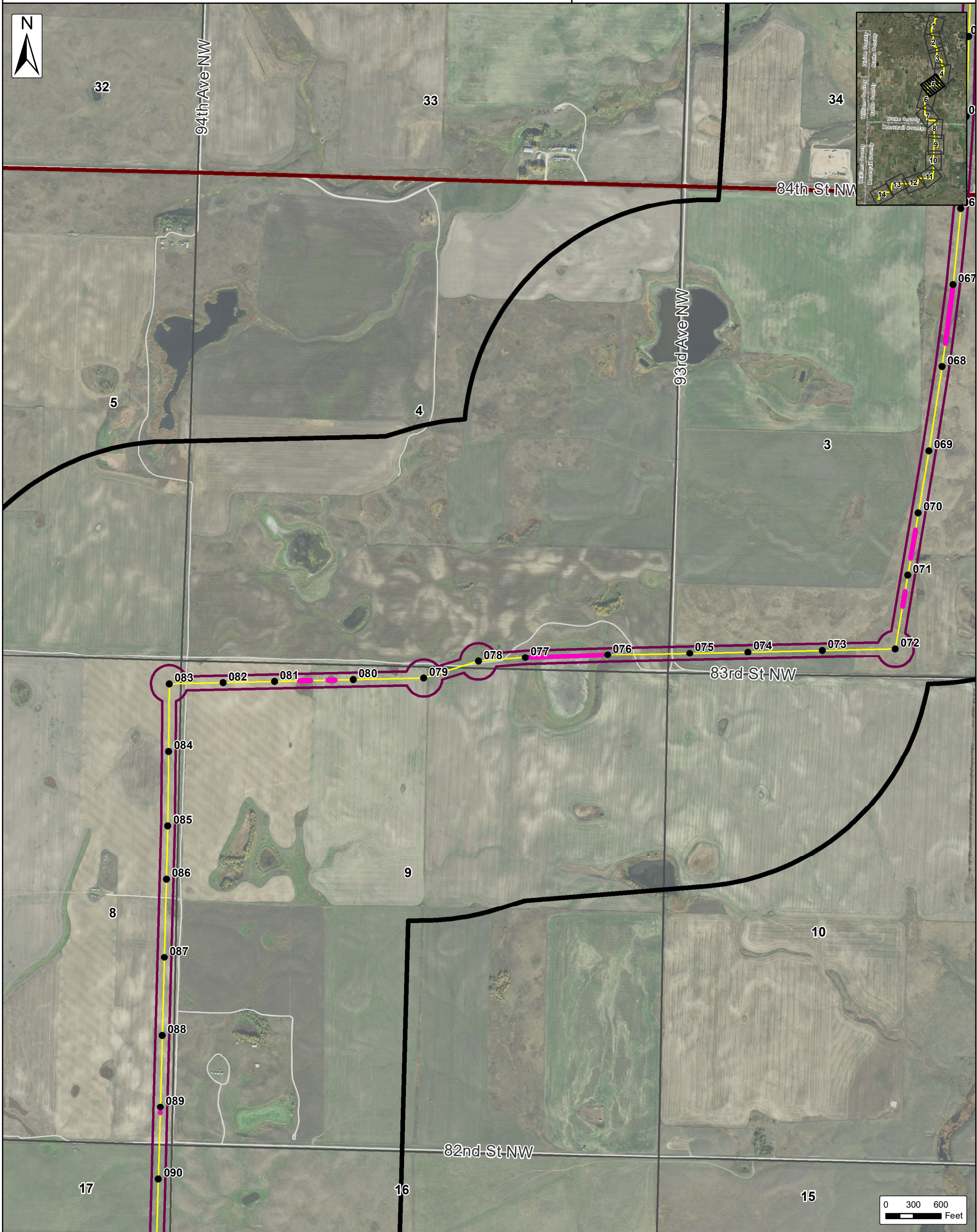
The information contained on this map is proprietary and confidential. The use or disclosure of this information by you to third parties is prohibited by law and may give rise to civil or criminal liability.

# Burke Wind Transmission Line Transmission Line Map

Burke County & Mountrail County, North Dakota

Client:  
**Burke Wind, LLC**

Issue Date:  
2/6/2019  
Atwell, LLC Project:  
16000947



- Transmission Line Plan**
- Proposed Structures
  - Transmission Line
  - Aerial Overhead Crossing- No Direct Impacts Proposed
  - Transmission Line 150 ft. Project Corridor
  - Transmission Line 1 Mile Study Area
  - Existing Tande Substation

- Exclusion Areas**  
Archaeological Sites Not Shown Due to Confidentiality
- Avoidance Areas**  
○ Receptor 500 Ft. Avoidance Area
- Project Participation**
- △ Not Participating Occupied Receptor
  - △ Participating Unoccupied Structure
  - △ Not Participating Unoccupied Structure

- Data**
- Existing Natural Gas Pipeline (Velocity Suite)
  - Proposed Transmission (Velocity Suite)
  - Existing Transmission (Velocity Suite)
  - Landslide Deposits
  - Protected Areas (USGS)
    - Waterfowl Production Area
    - Wildlife Management Area

- Sections (PLSS)
- Townships (MCD)
- Counties

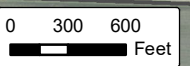
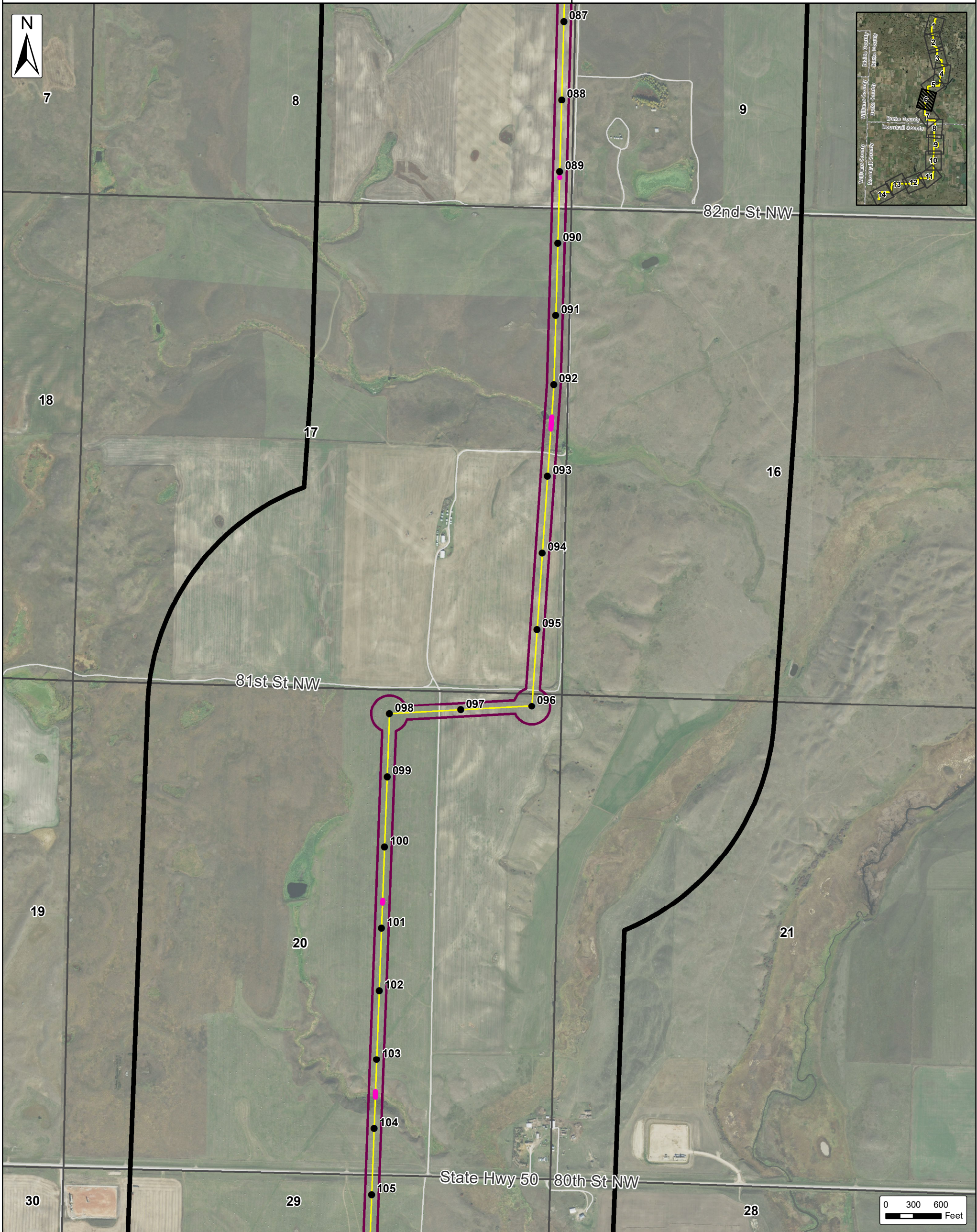
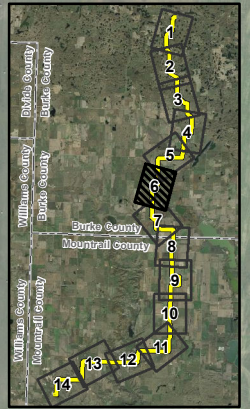


The information contained on this map is proprietary and confidential. The use or disclosure of this information by you to third parties is prohibited by law and may give rise to civil or criminal liability.

# Burke Wind Transmission Line

## Transmission Line Map

Burke County & Mountrail County, North Dakota



<p><b>Transmission Line Plan</b></p> <ul style="list-style-type: none"> <li>● Proposed Structures</li> <li>— Transmission Line</li> <li>— Aerial Overhead Crossing- No Direct Impacts Proposed</li> <li>— Transmission Line 150 ft. Project Corridor</li> <li>— Transmission Line 1 Mile Study Area</li> <li>▣ Existing Tande Substation</li> </ul>	<p><b>Exclusion Areas</b></p> <p>Archaeological Sites Not Shown Due to Confidentiality</p> <p><b>Avoidance Areas</b></p> <ul style="list-style-type: none"> <li>○ Receptor 500 Ft. Avoidance Area</li> </ul> <p><b>Project Participation</b></p> <ul style="list-style-type: none"> <li>△ Not Participating Occupied Receptor</li> <li>△ Participating Unoccupied Structure</li> <li>△ Not Participating Unoccupied Structure</li> </ul>	<p><b>Data</b></p> <ul style="list-style-type: none"> <li>— Existing Natural Gas Pipeline (Velocity Suite)</li> <li>— Proposed Transmission (Velocity Suite)</li> <li>— Existing Transmission (Velocity Suite)</li> <li>— Landslide Deposits</li> <li>— Protected Areas (USGS) <ul style="list-style-type: none"> <li>— Waterfowl Production Area</li> <li>— Wildlife Management Area</li> </ul> </li> </ul>	<ul style="list-style-type: none"> <li>▣ Sections (PLSS)</li> <li>▣ Townships (MCD)</li> <li>▣ Counties</li> </ul>
---	--	--	--



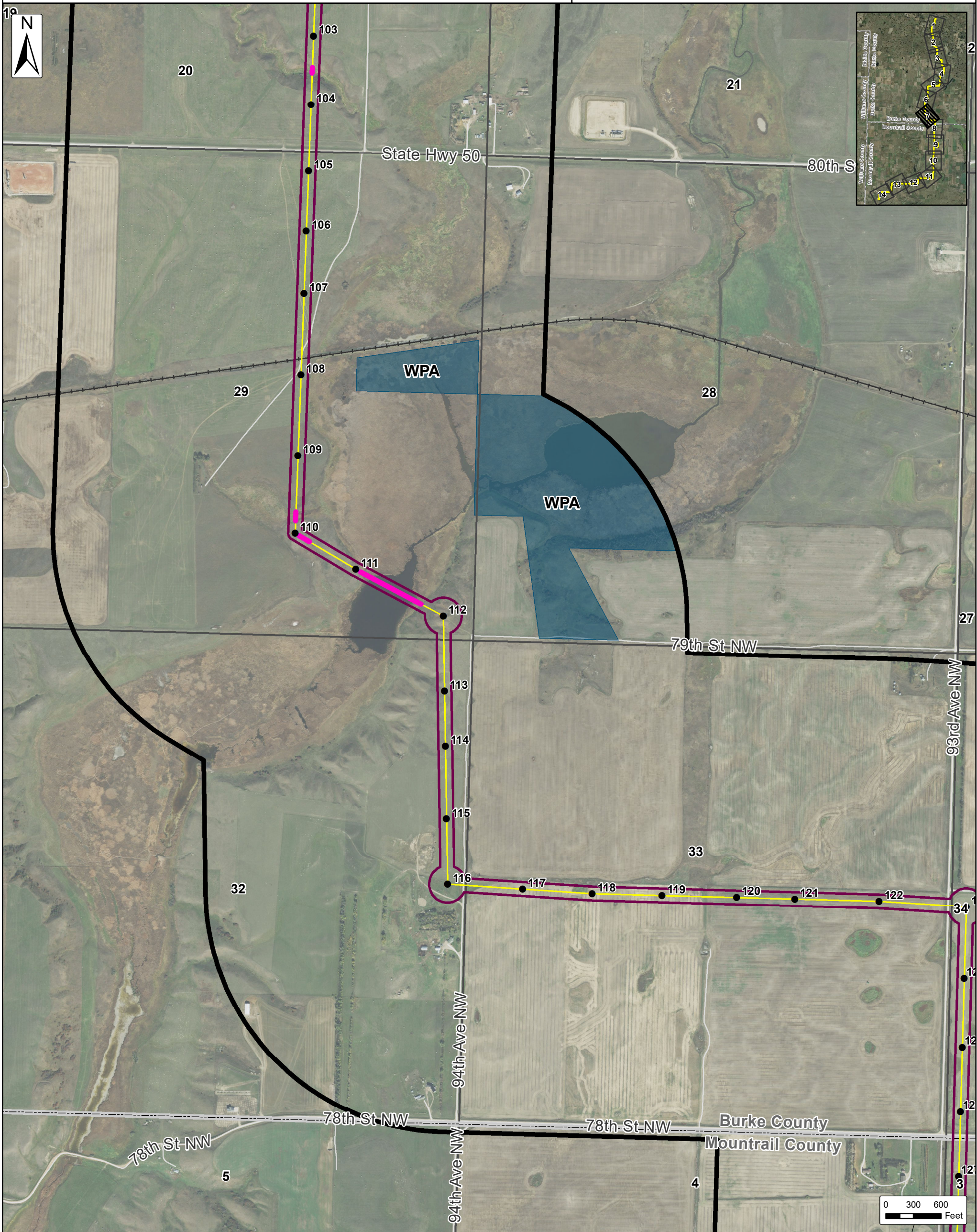
The information contained on this map is proprietary and confidential. The use or disclosure of this information by you to third parties is prohibited by law and may give rise to civil or criminal liability.

# Burke Wind Transmission Line Transmission Line Map

Burke County & Mountrail County, North Dakota

Client:  
**Burke Wind, LLC**

Issue Date:  
2/6/2019  
Atwell, LLC Project:  
16000947



Transmission Line Plan	Exclusion Areas	Data	Sections (PLSS)
● Proposed Structures	Archaeological Sites Not Shown Due to Confidentiality	— Existing Natural Gas Pipeline (Velocity Suite)	▭ Townships (MCD)
— Transmission Line	<b>Avoidance Areas</b>	⋯ Proposed Transmission (Velocity Suite)	▭ Counties
— Aerial Overhead Crossing- No Direct Impacts Proposed	○ Receptor 500 Ft. Avoidance Area	— Existing Transmission (Velocity Suite)	
▭ Transmission Line 150 ft. Project Corridor	<b>Project Participation</b>	▨ Landslide Deposits	
▭ Transmission Line 1 Mile Study Area	△ Not Participating Occupied Receptor	▨ Protected Areas (USGS)	
▨ Existing Tande Substation	△ Participating Unoccupied Structure	▨ Waterfowl Production Area	
	△ Not Participating Unoccupied Structure	▨ Wildlife Management Area	



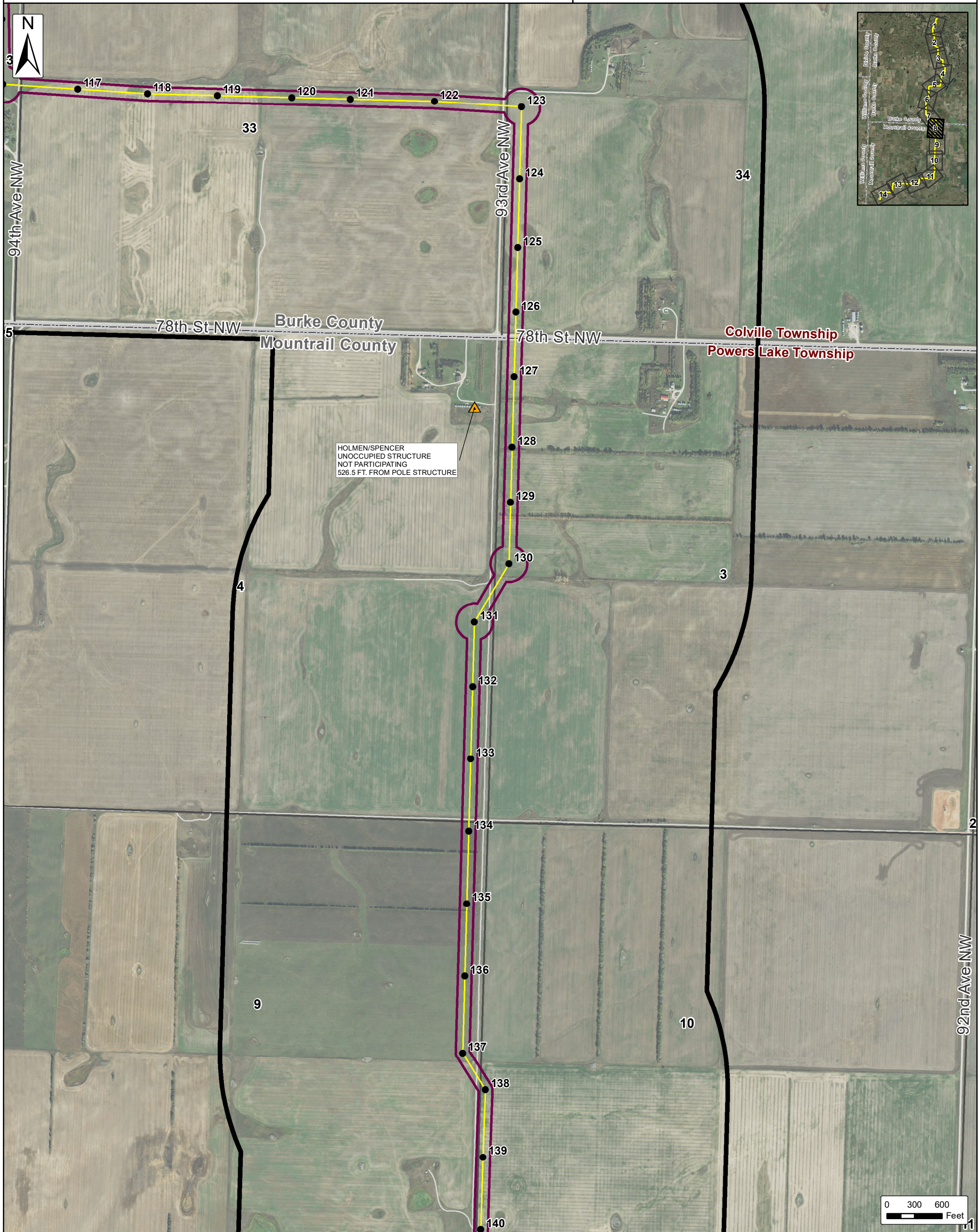
The information contained on this map is proprietary and confidential. The use or disclosure of this information by you to third parties is prohibited by law and may give rise to civil or criminal liability.

# Burke Wind Transmission Line Transmission Line Map

Burke County & Mountrail County, North Dakota

Client:  
**Burke Wind, LLC**

Issue Date:  
2/6/2019  
Atwell, LLC Project:  
16000947



HOLMEN/SPENCER  
UNOCCUPIED STRUCTURE  
NOT PARTICIPATING  
526.5 FT. FROM POLE STRUCTURE

- |   |   |  |  |
|---|---|--|--|
| <p><b>Transmission Line Plan</b></p> <ul style="list-style-type: none"> <li>● Proposed Structures</li> <li>— Transmission Line</li> <li>— Aerial Overhead Crossing-<br/>No Direct Impacts Proposed</li> <li>— Transmission Line<br/>150 ft. Project Corridor</li> <li>— Transmission Line<br/>1 Mile Study Area</li> <li>Existing Tande Substation</li> </ul> | <p><b>Exclusion Areas</b><br/>Archaeological Sites Not Shown<br/>Due to Confidentiality</p> <p><b>Avoidance Areas</b><br/>○ Receptor 500 Ft. Avoidance Area</p> <p><b>Project Participation</b></p> <ul style="list-style-type: none"> <li>△ Not Participating Occupied Receptor</li> <li>△ Participating Unoccupied Structure</li> <li>△ Not Participating Unoccupied Structure</li> </ul> | <p><b>Data</b></p> <ul style="list-style-type: none"> <li>— Existing Natural Gas<br/>Pipeline (Velocity Suite)</li> <li>— Proposed Transmission<br/>(Velocity Suite)</li> <li>— Existing Transmission<br/>(Velocity Suite)</li> <li>— Landslide Deposits</li> <li>Protected Areas (USGS) <ul style="list-style-type: none"> <li>Waterfowl Production Area</li> <li>Wildlife Management Area</li> </ul> </li> </ul> | <ul style="list-style-type: none"> <li>— Sections (PLSS)</li> <li>— Townships (MCD)</li> <li>— Counties</li> </ul> |
|---|---|--|--|



The information contained on this map is proprietary and confidential. The use or disclosure of this information by you to third parties is prohibited by law and may give rise to civil or criminal liability.

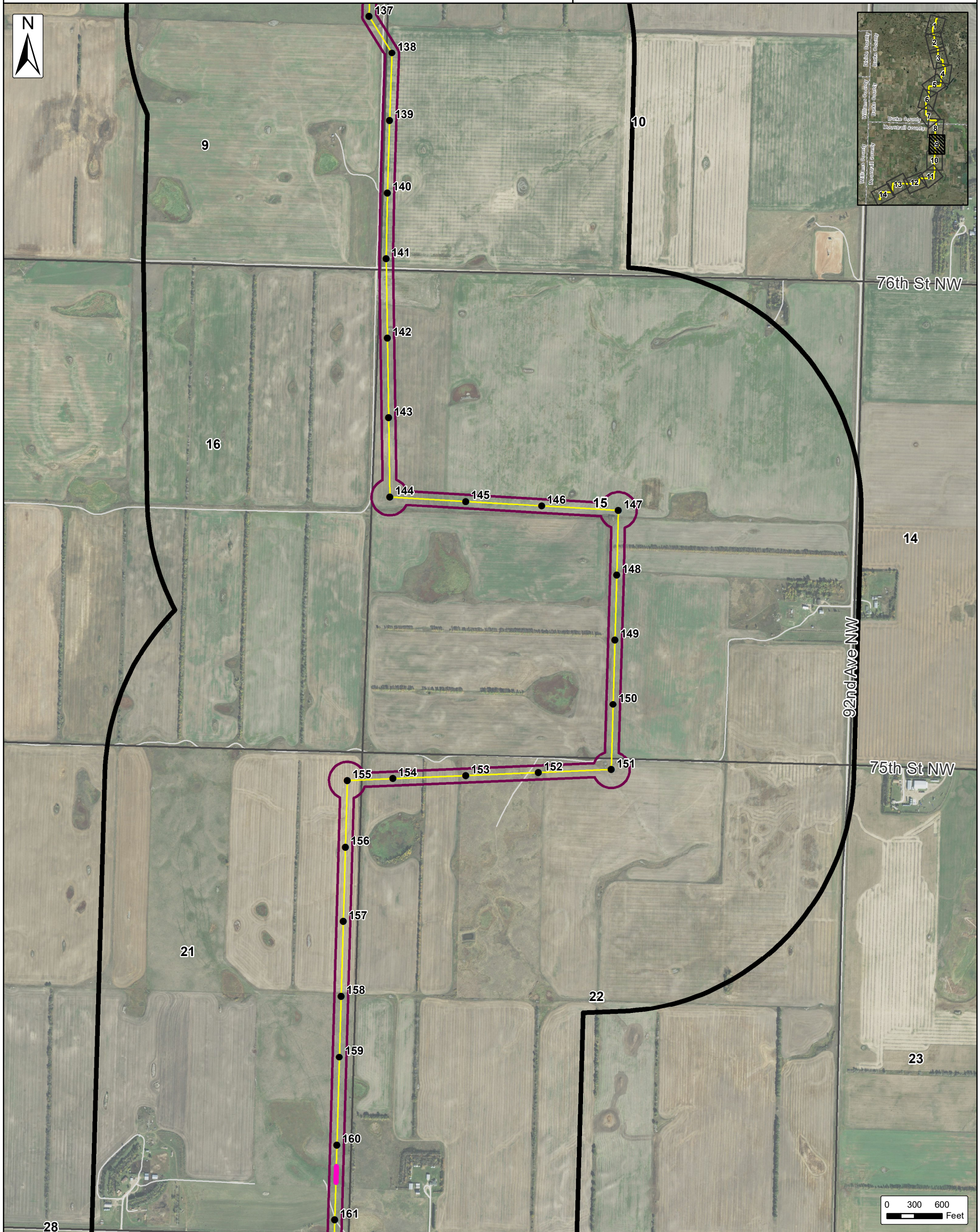
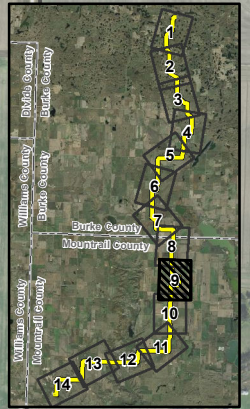
# Burke Wind Transmission Line

## Transmission Line Map

Burke County & Mountrail County, North Dakota

Client:  
**Burke Wind, LLC**

Issue Date:  
2/6/2019  
Atwell, LLC Project:  
16000947



<p><b>Transmission Line Plan</b></p> <ul style="list-style-type: none"> <li>● Proposed Structures</li> <li>— Transmission Line</li> <li>— Aerial Overhead Crossing- No Direct Impacts Proposed</li> <li>— Transmission Line 150 ft. Project Corridor</li> <li>— Transmission Line 1 Mile Study Area</li> <li>Existing Tande Substation</li> </ul>	<p><b>Exclusion Areas</b></p> <p>Archaeological Sites Not Shown Due to Confidentiality</p> <p><b>Avoidance Areas</b></p> <ul style="list-style-type: none"> <li>○ Receptor 500 Ft. Avoidance Area</li> </ul> <p><b>Project Participation</b></p> <ul style="list-style-type: none"> <li>△ Not Participating Occupied Receptor</li> <li>△ Participating Unoccupied Structure</li> <li>△ Not Participating Unoccupied Structure</li> </ul>	<p><b>Data</b></p> <ul style="list-style-type: none"> <li>— Existing Natural Gas Pipeline (Velocity Suite)</li> <li>— Proposed Transmission (Velocity Suite)</li> <li>— Existing Transmission (Velocity Suite)</li> <li>— Landslide Deposits</li> <li>Protected Areas (USGS)                     <ul style="list-style-type: none"> <li>— Waterfowl Production Area</li> <li>— Wildlife Management Area</li> </ul> </li> </ul>	<ul style="list-style-type: none"> <li>— Sections (PLSS)</li> <li>— Townships (MCD)</li> <li>— Counties</li> </ul>
---	--	--	--

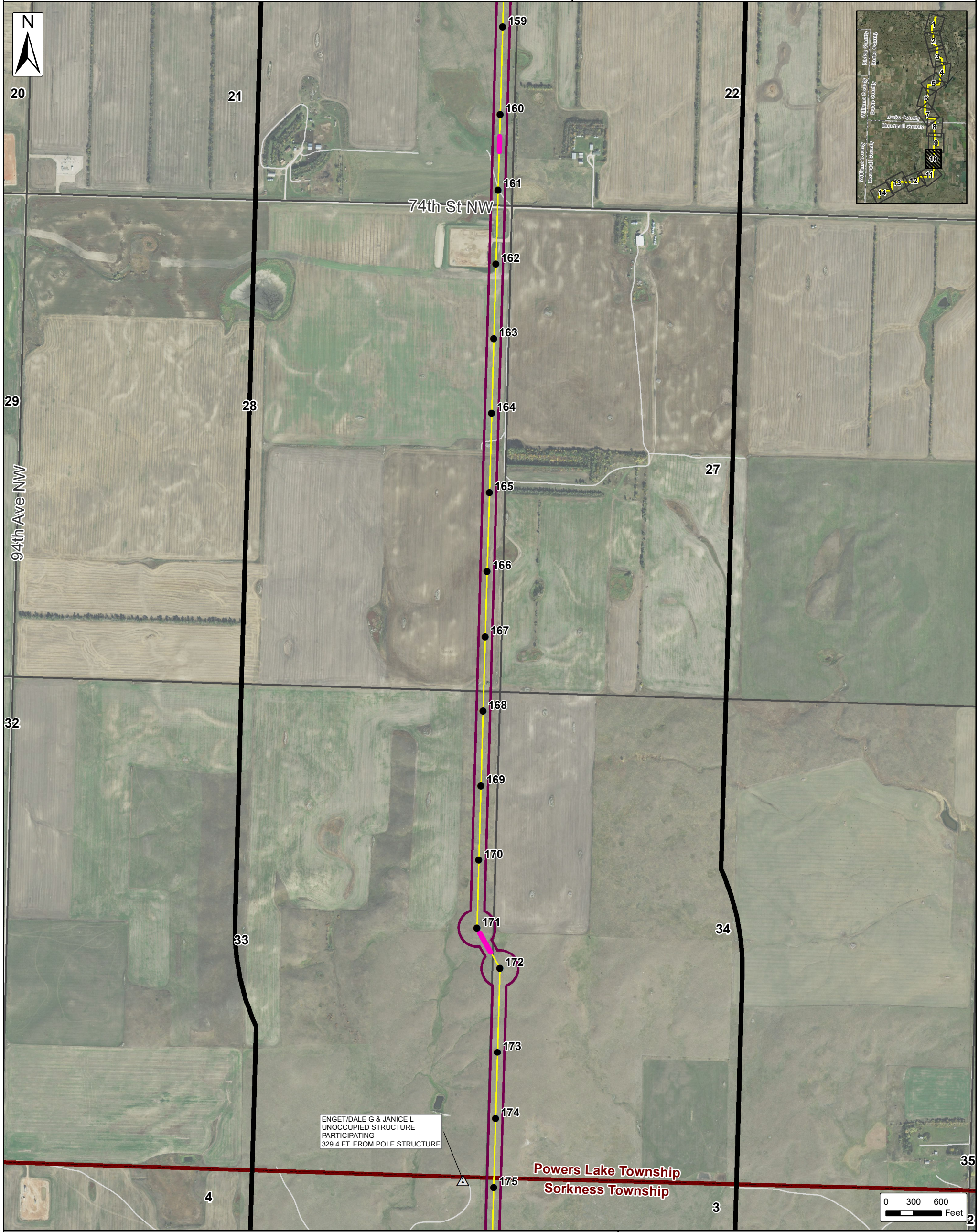


The information contained on this map is proprietary and confidential. The use or disclosure of this information by you to third parties is prohibited by law and may give rise to civil or criminal liability.

# Burke Wind Transmission Line

## Transmission Line Map

Burke County & Mountrail County, North Dakota



- Transmission Line Plan**
- Proposed Structures
  - Transmission Line
  - Aerial Overhead Crossing- No Direct Impacts Proposed
  - Transmission Line 150 ft. Project Corridor
  - Transmission Line 1 Mile Study Area
  - Existing Tande Substation

- Exclusion Areas**
- Archaeological Sites Not Shown Due to Confidentiality
- Avoidance Areas**
- Receptor 500 Ft. Avoidance Area
- Project Participation**
- △ Not Participating Occupied Receptor
  - △ Participating Unoccupied Structure
  - △ Not Participating Unoccupied Structure

- Data**
- Existing Natural Gas Pipeline (Velocity Suite)
  - Proposed Transmission (Velocity Suite)
  - Existing Transmission (Velocity Suite)
  - Landslide Deposits
  - Protected Areas (USGS)
    - Waterfowl Production Area
    - Wildlife Management Area

- Sections (PLSS)
- Townships (MCD)
- Counties



The information contained on this map is proprietary and confidential. The use or disclosure of this information by you to third parties is prohibited by law and may give rise to civil or criminal liability.

# Burke Wind Transmission Line

## Transmission Line Map

Burke County & Mountrail County, North Dakota

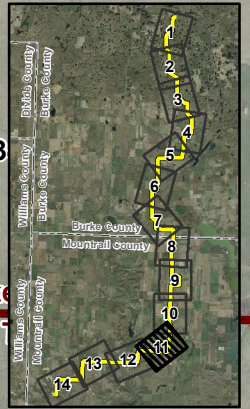


32

33

ENGET/DALE G & JANICE L  
UNOCCUPIED STRUCTURE  
PARTICIPATING  
329.4 FT. FROM POLE STRUCTURE

**Powers Lake**  
**Sorkness**



5

4

173

174

175

176

177

178

179

180

181

182

183

94th Ave-NW

71st St NW

193

192

191

190

189

188

187

186

185

184

70th Ln NW

NORSTEDT/NELS  
UNOCCUPIED STRUCTURE  
PARTICIPATING  
508.9 FT. FROM POLE STRUCTURE

8

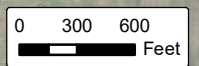
9

10

17

16

15



- Transmission Line Plan**
- Proposed Structures
  - Transmission Line
  - Aerial Overhead Crossing- No Direct Impacts Proposed
  - Transmission Line 150 ft. Project Corridor
  - Transmission Line 1 Mile Study Area
  - Existing Tande Substation

- Exclusion Areas**
- Archaeological Sites Not Shown Due to Confidentiality
- Avoidance Areas**
- Receptor 500 Ft. Avoidance Area
- Project Participation**
- △ Not Participating Occupied Receptor
  - △ Participating Unoccupied Structure
  - △ Not Participating Unoccupied Structure

- Data**
- Existing Natural Gas Pipeline (Velocity Suite)
  - Proposed Transmission (Velocity Suite)
  - Existing Transmission (Velocity Suite)
  - Landslide Deposits
  - Protected Areas (USGS)
    - Waterfowl Production Area
    - Wildlife Management Area

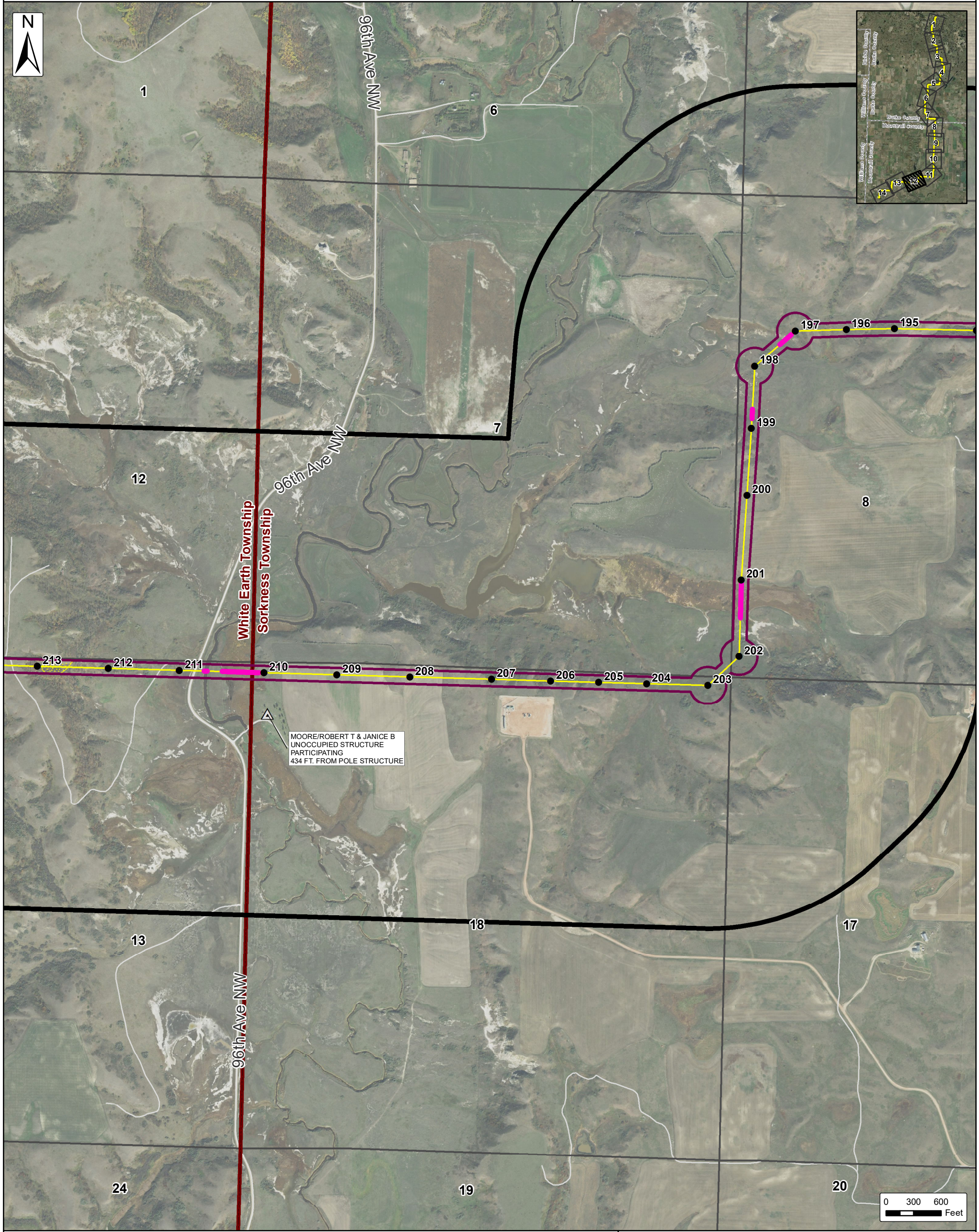
- Sections (PLSS)
- Townships (MCD)
- Counties



The information contained on this map is proprietary and confidential. The use or disclosure of this information by you to third parties is prohibited by law and may give rise to civil or criminal liability.

# Burke Wind Transmission Line Transmission Line Map

Burke County & Mountrail County, North Dakota



- Transmission Line Plan**
- Proposed Structures
  - Transmission Line
  - Aerial Overhead Crossing- No Direct Impacts Proposed
  - Transmission Line 150 ft. Project Corridor
  - Transmission Line 1 Mile Study Area
  - Existing Tande Substation

- Exclusion Areas**
- Archaeological Sites Not Shown Due to Confidentiality
- Avoidance Areas**
- Receptor 500 Ft. Avoidance Area
- Project Participation**
- △ Not Participating Occupied Receptor
  - △ Participating Unoccupied Structure
  - △ Not Participating Unoccupied Structure

- Data**
- Existing Natural Gas Pipeline (Velocity Suite)
  - Proposed Transmission (Velocity Suite)
  - Existing Transmission (Velocity Suite)
  - Landslide Deposits
  - Protected Areas (USGS)
    - Waterfowl Production Area
    - Wildlife Management Area

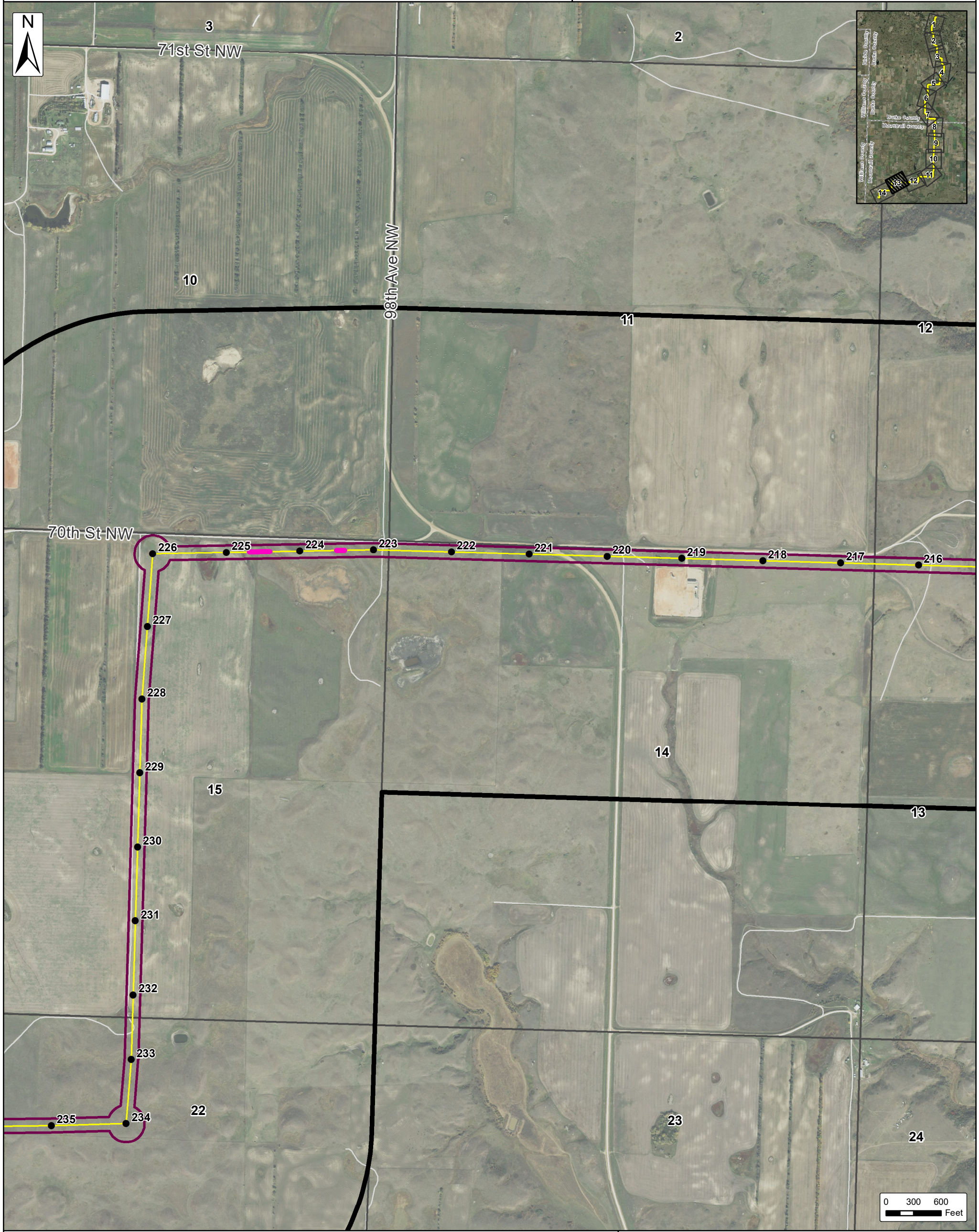
- Sections (PLSS)
- Townships (MCD)
- Counties



The information contained on this map is proprietary and confidential. The use or disclosure of this information by you to third parties is prohibited by law and may give rise to civil or criminal liability.

# Burke Wind Transmission Line Transmission Line Map

Burke County & Mountrail County, North Dakota



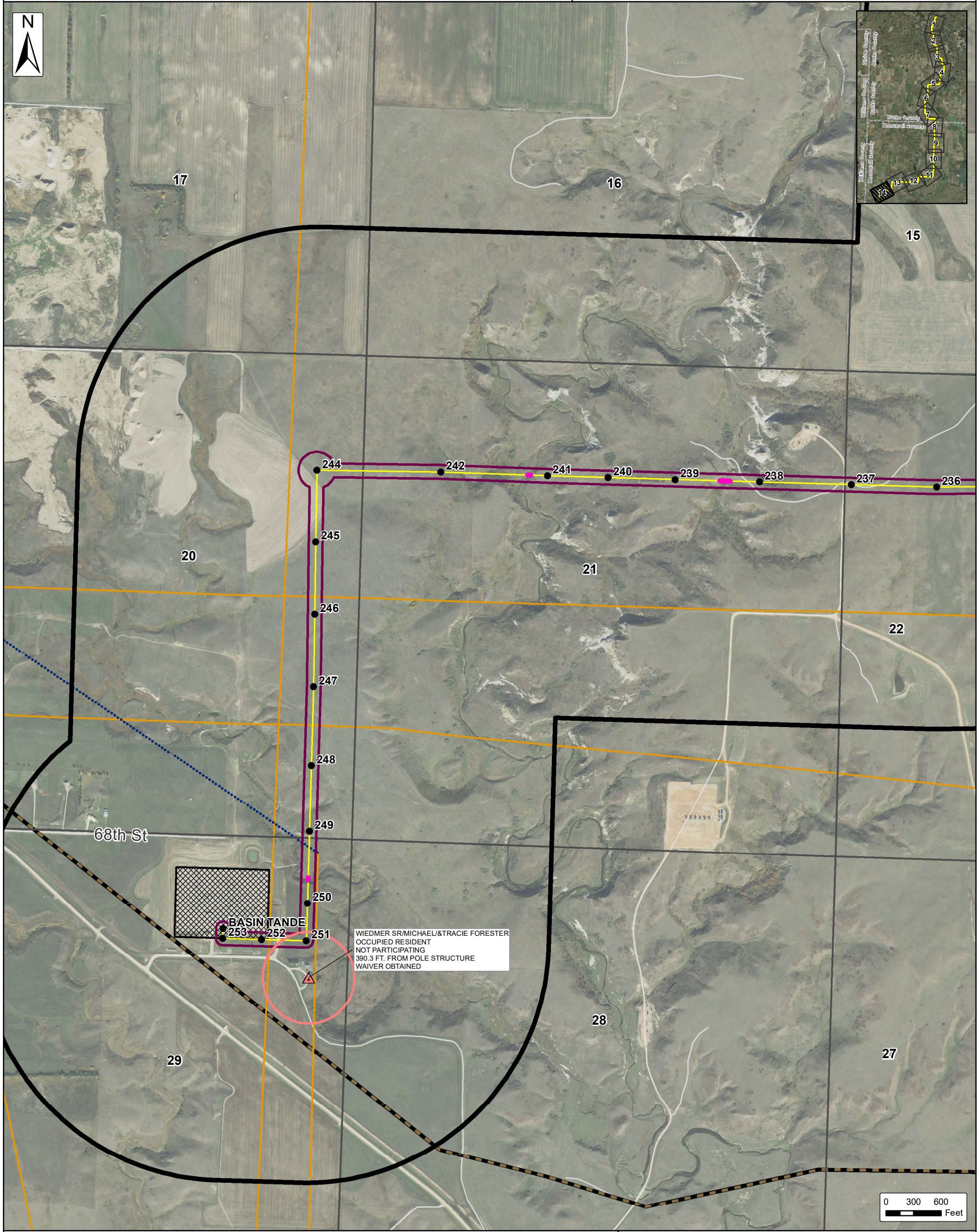
Transmission Line Plan	Exclusion Areas	Data	Sections (PLSS)
● Proposed Structures	Archaeological Sites Not Shown Due to Confidentiality	Existing Natural Gas Pipeline (Velocity Suite)	▭ Townships (MCD)
— Transmission Line	<b>Avoidance Areas</b>	Proposed Transmission (Velocity Suite)	▭ Counties
— Aerial Overhead Crossing- No Direct Impacts Proposed	○ Receptor 500 Ft. Avoidance Area	Existing Transmission (Velocity Suite)	
▭ Transmission Line 150 ft. Project Corridor	<b>Project Participation</b>	Landslide Deposits	
▭ Transmission Line 1 Mile Study Area	△ Not Participating Occupied Receptor	Protected Areas (USGS)	
▭ Existing Tande Substation	△ Participating Unoccupied Structure	Waterfowl Production Area	
	△ Not Participating Unoccupied Structure	Wildlife Management Area	



The information contained on this map is proprietary and confidential. The use or disclosure of this information by you to third parties is prohibited by law and may give rise to civil or criminal liability.

# Burke Wind Transmission Line Transmission Line Map

Burke County & Mountrail County, North Dakota



- Transmission Line Plan**
- Proposed Structures
  - Transmission Line
  - Aerial Overhead Crossing- No Direct Impacts Proposed
  - Transmission Line 150 ft. Project Corridor
  - Transmission Line 1 Mile Study Area
  - Existing Tande Substation

- Exclusion Areas**
- Archaeological Sites Not Shown Due to Confidentiality
- Avoidance Areas**
- Receptor 500 Ft. Avoidance Area
- Project Participation**
- △ Not Participating Occupied Receptor
  - △ Participating Unoccupied Structure
  - △ Not Participating Unoccupied Structure

- Data**
- Existing Natural Gas Pipeline (Velocity Suite)
  - Proposed Transmission (Velocity Suite)
  - Existing Transmission (Velocity Suite)
  - Landslide Deposits
  - Protected Areas (USGS)
    - Waterfowl Production Area
    - Wildlife Management Area

- Sections (PLSS)
- Townships (MCD)
- Counties



The information contained on this map is proprietary and confidential. The use or disclosure of this information by you to third parties is prohibited by law and may give rise to civil or criminal liability.