

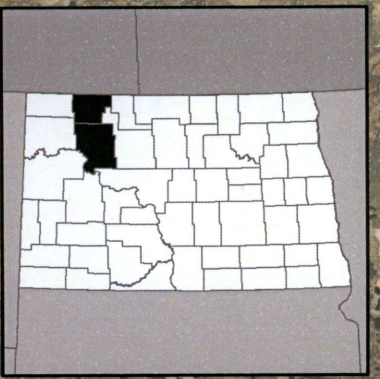
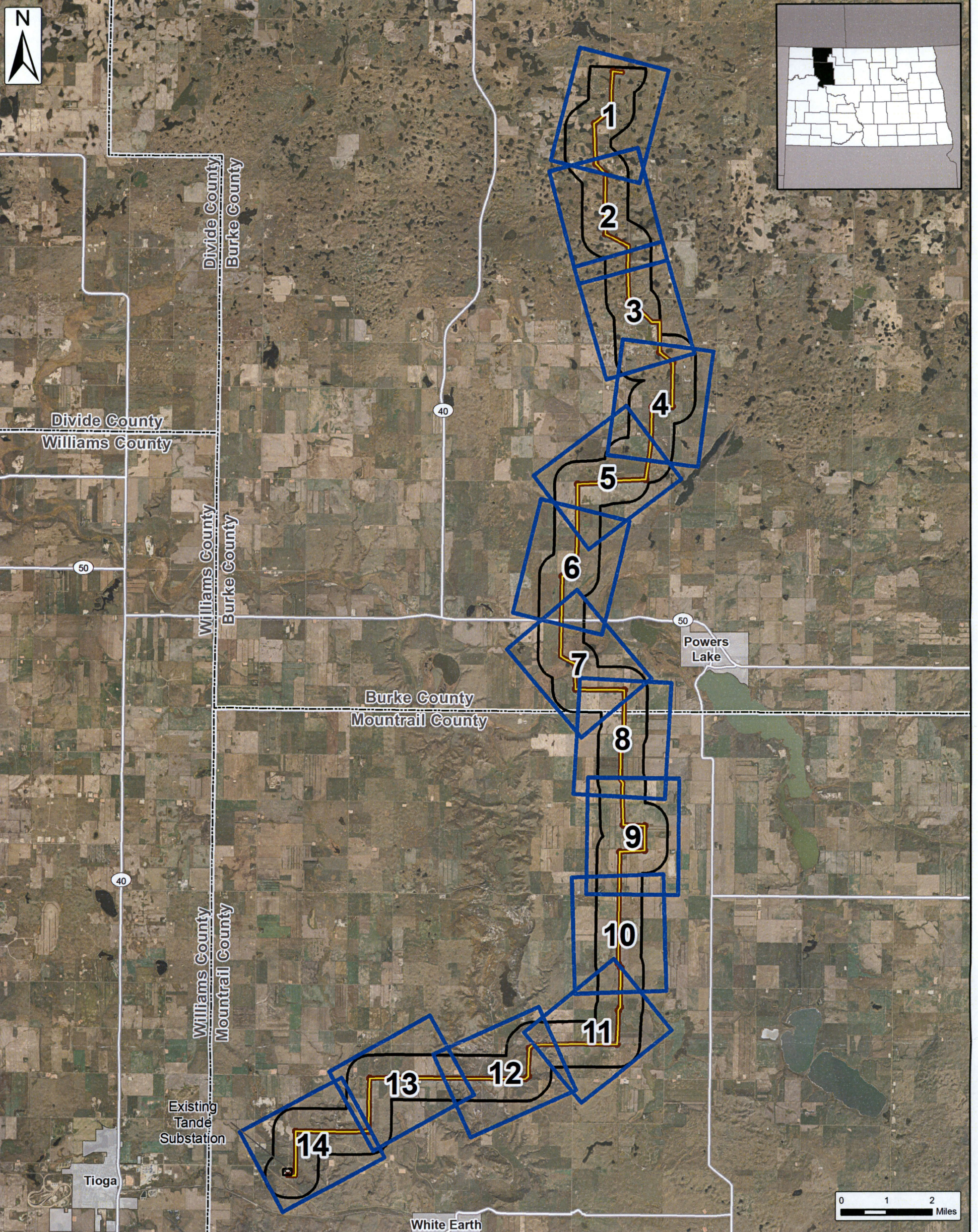
Burke Wind Transmission Line

Transmission Line Index Map

Burke County & Mountrail County, North Dakota

Client:
Burke Wind, LLC

Issue Date:
2/4/2019
Atwell, LLC Project:
16000947



Project Plan

- Transmission Line
- Transmission Line 150 ft. Project Corridor
- Transmission Line 1 Mile Study Area
- Existing Tande Substation

Data

- Mapbook Pages
- Cities
- Counties

EXHIBIT

2



24 PU-18-302 Filed 02/06/2019 Pages: 15
Final Corridor and Route Map Book
Burke Wind, LLC
Casey Furey, Crowley Fleck
44 PU-18-302 Filed 03/08/2019 Pages: 15
Exhibit 2 - Transmission Line Map
Burke Wind, LLC

SOURCE: USDA NAIP 2017

Burke Wind Transmission Line Transmission Line Map

Burke County & Mountrail County, North Dakota



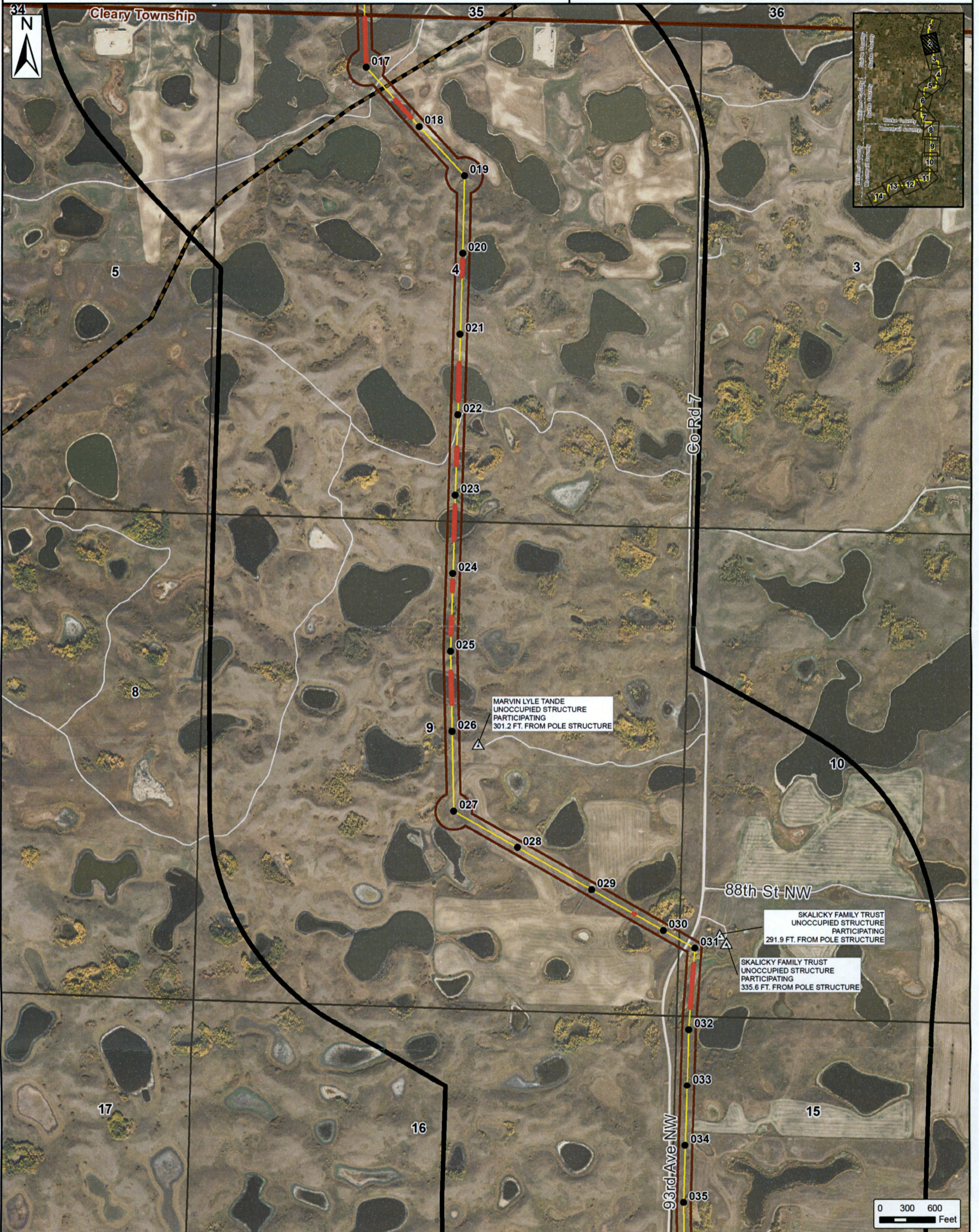
Transmission Line Plan	Exclusion Areas	Data	Sections (PLSS)
● Proposed Structures	Archaeological Sites Not Shown Due to Confidentiality	Existing Natural Gas Pipeline (Velocity Suite)	Sections (PLSS)
— Transmission Line	Avoidance Areas	Proposed Transmission (Velocity Suite)	Townships (MCD)
— Aerial Overhead Crossing- No Direct Impacts Proposed	Receptor 500 Ft. Avoidance Area	Existing Transmission (Velocity Suite)	Counties
— Transmission Line 150 ft. Project Corridor	Project Participation	Landslide Deposits	
— Transmission Line 1 Mile Study Area	△ Not Participating Occupied Receptor	Protected Areas (USGS)	
Existing Tandem Substation	△ Participating Unoccupied Structure	Waterfowl Production Area	
	△ Not Participating Unoccupied Structure	Wildlife Management Area	



The information contained on this map is proprietary and confidential. The use or disclosure of this information by you to third parties is prohibited by law and may give rise to civil or criminal liability.

Burke Wind Transmission Line Transmission Line Map

Burke County & Mountrail County, North Dakota



Transmission Line Plan <ul style="list-style-type: none"> Proposed Structures Transmission Line Aerial Overhead Crossing- No Direct Impacts Proposed Transmission Line 150 ft. Project Corridor Transmission Line 1 Mile Study Area Existing Tande Substation 	Exclusion Areas <ul style="list-style-type: none"> Archaeological Sites Not Shown Due to Confidentiality Avoidance Areas <ul style="list-style-type: none"> Receptor 500 Ft. Avoidance Area Project Participation <ul style="list-style-type: none"> Not Participating Occupied Receptor Participating Unoccupied Structure Not Participating Unoccupied Structure 	Data <ul style="list-style-type: none"> Existing Natural Gas Pipeline (Velocity Suite) Proposed Transmission (Velocity Suite) Existing Transmission (Velocity Suite) Landslide Deposits Protected Areas (USGS) <ul style="list-style-type: none"> Waterfowl Production Area Wildlife Management Area 	<ul style="list-style-type: none"> Sections (PLSS) Townships (MCD) Counties
---	---	--	--

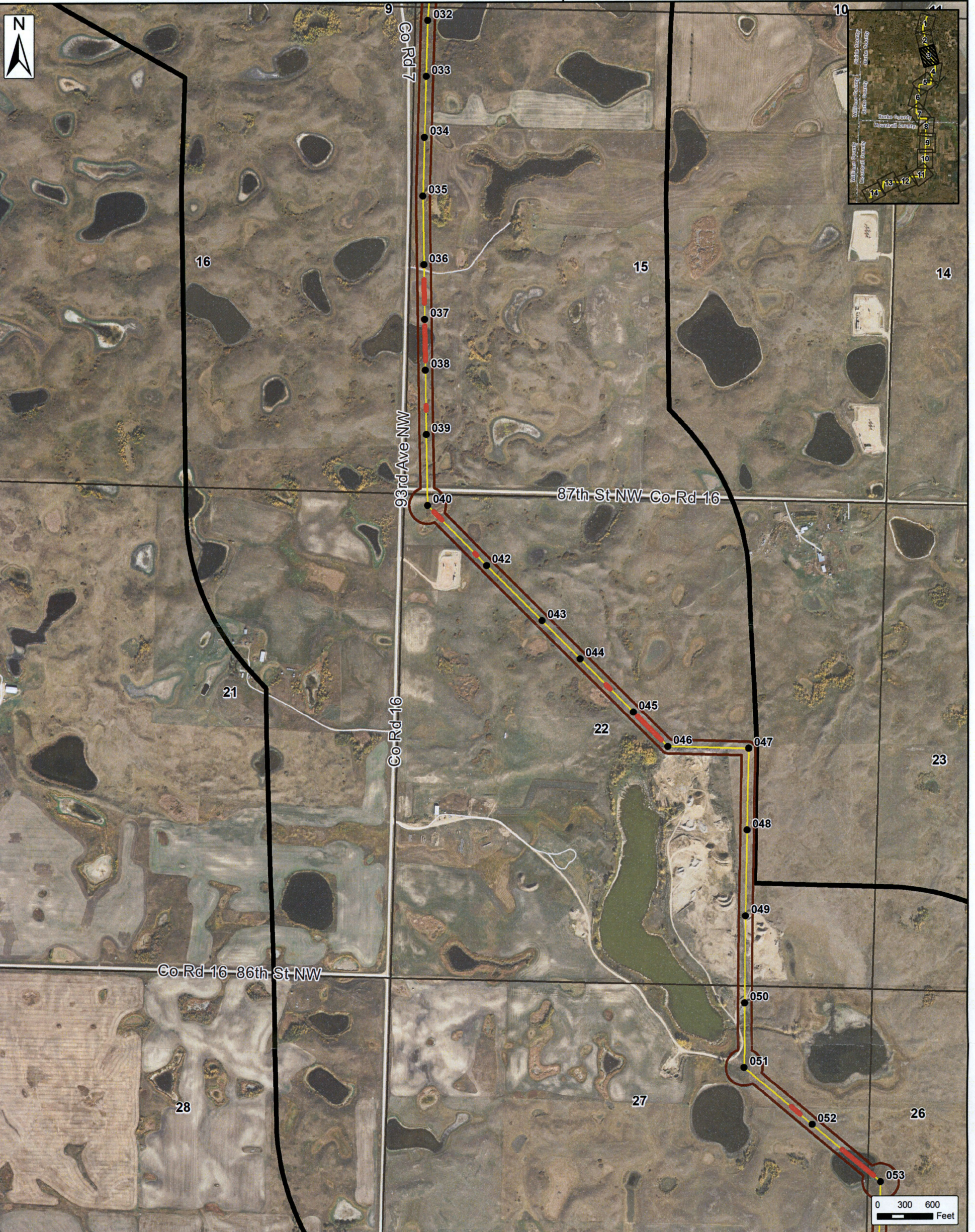


The information contained on this map is proprietary and confidential. The use or disclosure of this information by you to third parties is prohibited by law and may give rise to civil or criminal liability.

SOURCE: USDA NAIP 2017 IMAGERY

Burke Wind Transmission Line Transmission Line Map

Burke County & Mountrail County, North Dakota



Transmission Line Plan <ul style="list-style-type: none"> Proposed Structures Transmission Line Aerial Overhead Crossing- No Direct Impacts Proposed Transmission Line 150 ft. Project Corridor Transmission Line 1 Mile Study Area Existing Tandem Substation 	Exclusion Areas <ul style="list-style-type: none"> Archaeological Sites Not Shown Due to Confidentiality Avoidance Areas <ul style="list-style-type: none"> Receptor 500 Ft. Avoidance Area Project Participation <ul style="list-style-type: none"> Not Participating Occupied Receptor Participating Unoccupied Structure Not Participating Unoccupied Structure 	Data <ul style="list-style-type: none"> Existing Natural Gas Pipeline (Velocity Suite) Proposed Transmission (Velocity Suite) Existing Transmission (Velocity Suite) Landslide Deposits Protected Areas (USGS) Waterfowl Production Area Wildlife Management Area 	<ul style="list-style-type: none"> Sections (PLSS) Townships (MCD) Counties
--	---	--	--

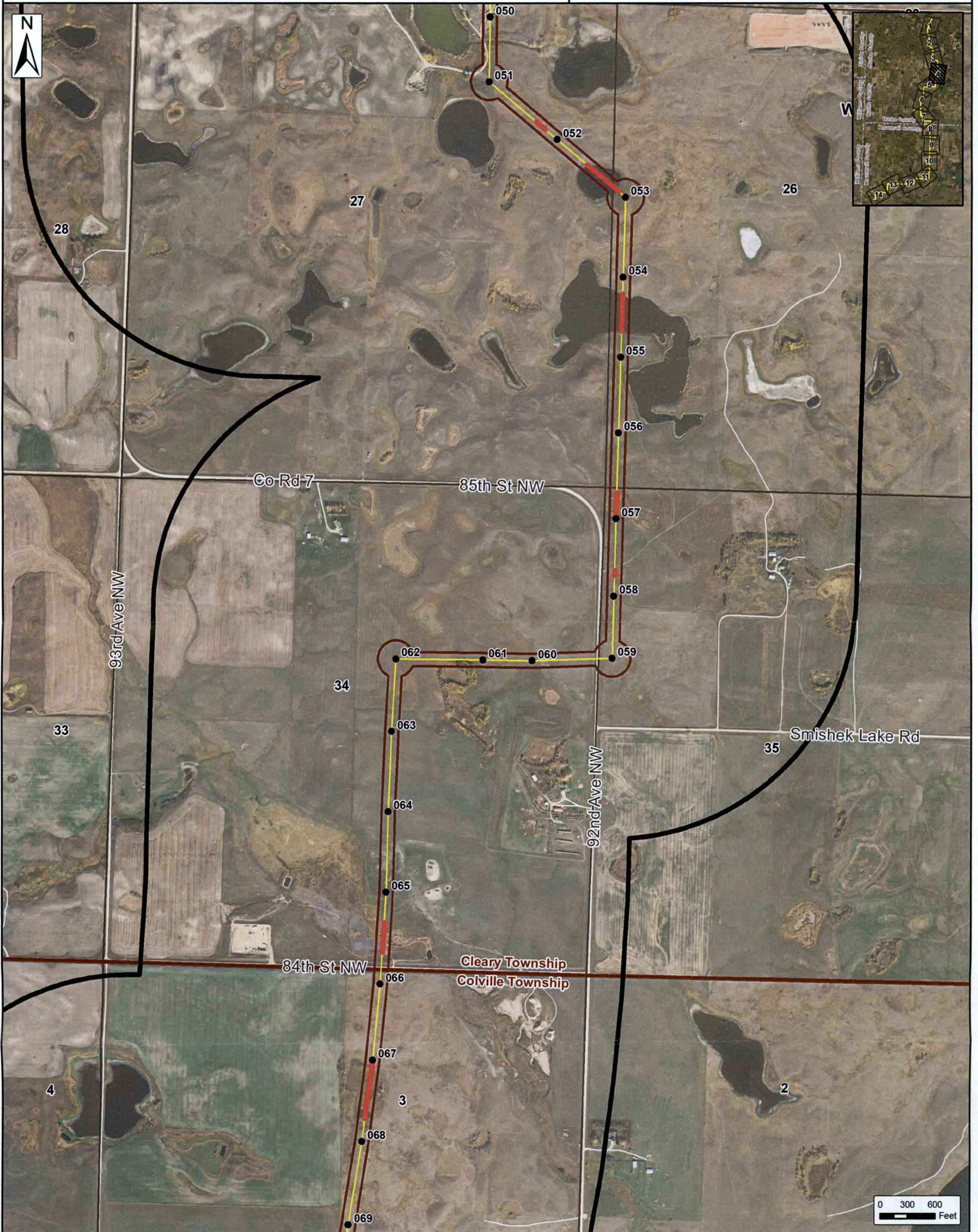
SOURCE: USDA NAIP 2017 IMAGERY




The information contained on this map is proprietary and confidential. The use or disclosure of this information by you to third parties is prohibited by law and may give rise to civil or criminal liability.

Burke Wind Transmission Line Transmission Line Map

Burke County & Mountrail County, North Dakota



Transmission Line Plan	Exclusion Areas	Data	Sections (PLSS)
● Proposed Structures	Archaeological Sites Not Shown Due to Confidentiality	Existing Natural Gas Pipeline (Velocity Suite)	Townships (MCD)
— Transmission Line	Avoidance Areas	Proposed Transmission (Velocity Suite)	Counties
— Aerial Overhead Crossing - No Direct Impacts Proposed	Receptor 500 Ft. Avoidance Area	Existing Transmission (Velocity Suite)	
— Transmission Line 150 ft. Project Corridor	Project Participation	Landslide Deposits	
— Transmission Line 1 Mile Study Area	▲ Not Participating Occupied Receptor	Protected Areas (USGS)	
▣ Existing Tandem Substation	▲ Participating Unoccupied Structure	Waterfowl Production Area	
	▲ Not Participating Unoccupied Structure	Wildlife Management Area	



ATWELL

The information contained on this map is proprietary and confidential. The use or disclosure of this information by you to third parties is prohibited by law and may give rise to civil or criminal liability.

SOURCE: USDA NAIP 2017 IMAGERY

Burke Wind Transmission Line Transmission Line Map

Burke County & Mountrail County, North Dakota



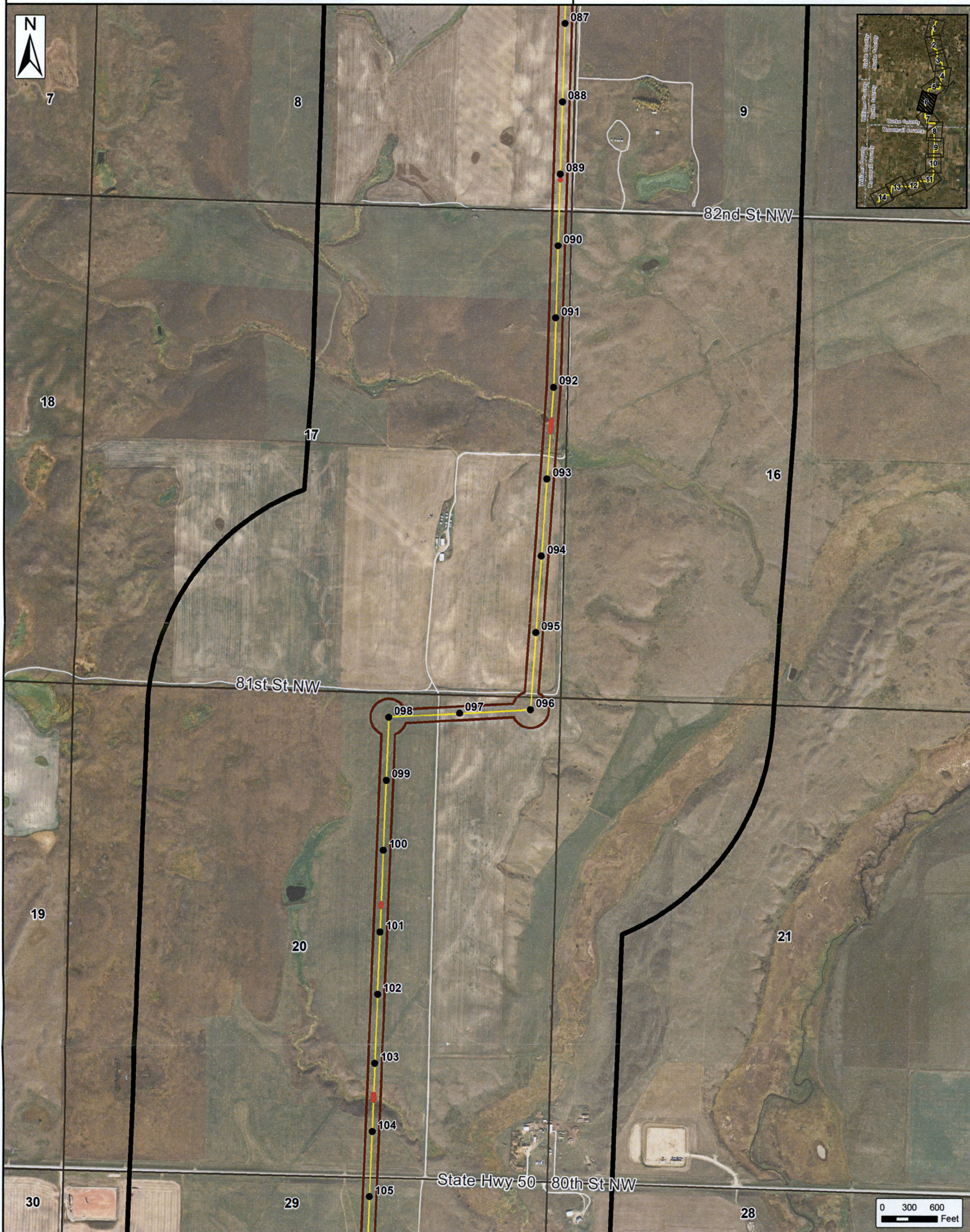
<p>Transmission Line Plan</p> <ul style="list-style-type: none"> ● Proposed Structures — Transmission Line — Aerial Overhead Crossing- No Direct Impacts Proposed — Transmission Line 150 ft. Project Corridor — Transmission Line 1 Mile Study Area Existing Tande Substation 	<p>Exclusion Areas</p> <p>Archaeological Sites Not Shown Due to Confidentiality</p> <p>Avoidance Areas</p> <ul style="list-style-type: none"> ○ Receptor 500 Ft. Avoidance Area <p>Project Participation</p> <ul style="list-style-type: none"> △ Not Participating Occupied Receptor △ Participating Unoccupied Structure △ Not Participating Unoccupied Structure 	<p>Data</p> <ul style="list-style-type: none"> Existing Natural Gas Pipeline (Velocity Suite) Proposed Transmission (Velocity Suite) Existing Transmission (Velocity Suite) Landslide Deposits Protected Areas (USGS) Waterfowl Production Area Wildlife Management Area 	<ul style="list-style-type: none"> Sections (PLSS) Townships (MCD) Counties
---	--	--	--



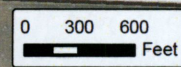
The information contained on this map is proprietary and confidential. The use or disclosure of this information by you to third parties is prohibited by law and may give rise to civil or criminal liability.

Burke Wind Transmission Line Transmission Line Map

Burke County & Mountrail County, North Dakota



<p>Transmission Line Plan</p> <ul style="list-style-type: none"> ● Proposed Structures — Transmission Line — Aerial Overhead Crossing- No Direct Impacts Proposed — Transmission Line 150 ft. Project Corridor — Transmission Line 1 Mile Study Area Existing Tande Substation 	<p>Exclusion Areas Archaeological Sites Not Shown Due to Confidentiality</p> <p>Avoidance Areas ○ Receptor 500 Ft. Avoidance Area</p> <p>Project Participation</p> <ul style="list-style-type: none"> △ Not Participating Occupied Receptor △ Participating Unoccupied Structure △ Not Participating Unoccupied Structure 	<p>Data</p> <ul style="list-style-type: none"> Existing Natural Gas Pipeline (Velocity Suite) Proposed Transmission (Velocity Suite) Existing Transmission (Velocity Suite) Landslide Deposits Protected Areas (USGS) Waterfowl Production Area Wildlife Management Area 	<ul style="list-style-type: none"> Sections (PLSS) Townships (MCD) Counties
---	---	--	--

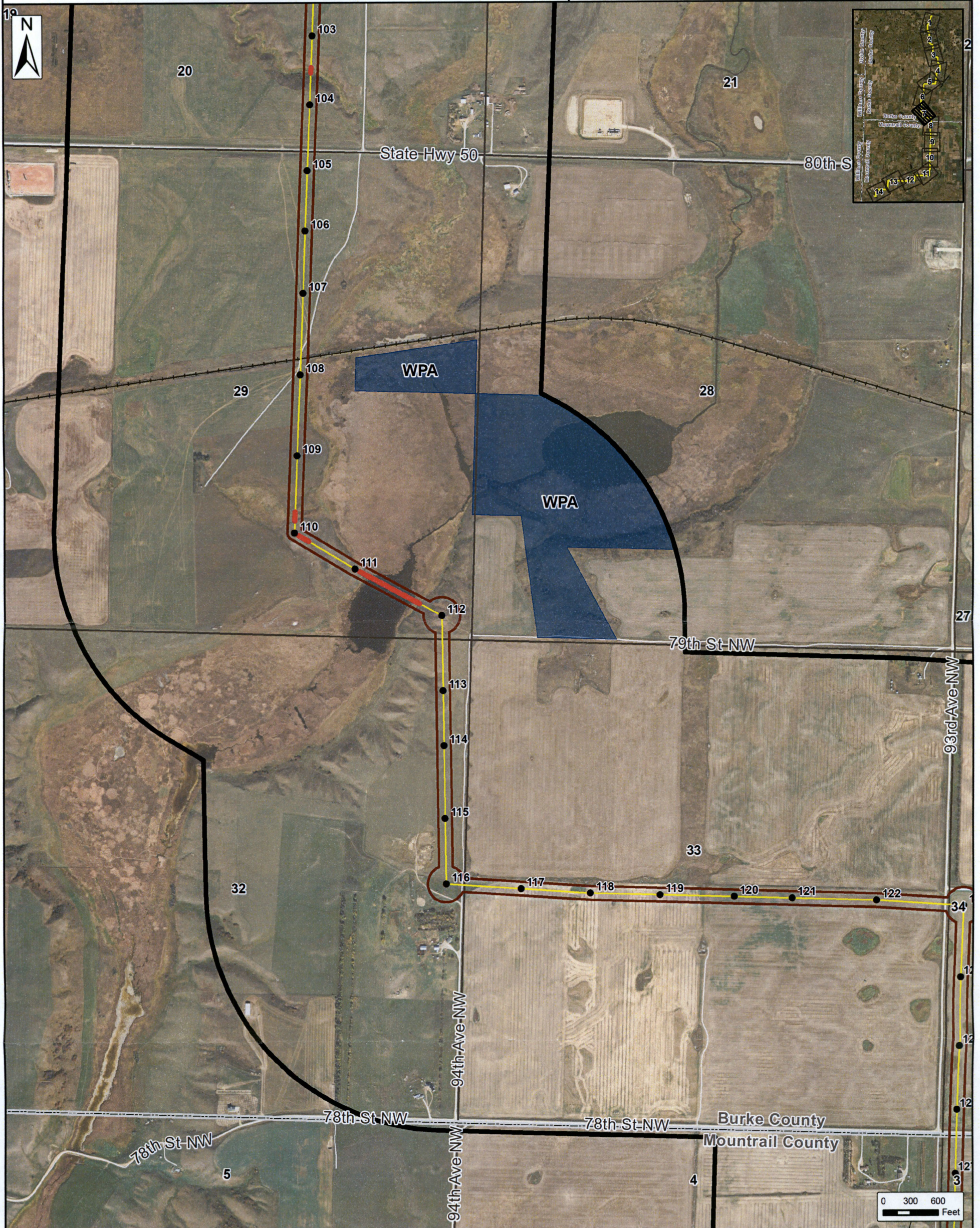


The information contained on this map is proprietary and confidential. The use or disclosure of this information by you to third parties is prohibited by law and may give rise to civil or criminal liability.


SOURCE: USDA NAIP 2017 IMAGERY

Burke Wind Transmission Line Transmission Line Map

Burke County & Mountrail County, North Dakota



Transmission Line Plan	Exclusion Areas	Data	Sections (PLSS)
● Proposed Structures	Archaeological Sites Not Shown Due to Confidentiality	Existing Natural Gas Pipeline (Velocity Suite)	▭ Townships (MCD)
— Transmission Line	Avoidance Areas	Proposed Transmission (Velocity Suite)	▭ Counties
— Aerial Overhead Crossing- No Direct Impacts Proposed	○ Receptor 500 Ft. Avoidance Area	Existing Transmission (Velocity Suite)	
▭ Transmission Line 150 ft. Project Corridor	Project Participation	Landslide Deposits	
▭ Transmission Line 1 Mile Study Area	△ Not Participating Occupied Receptor	Protected Areas (USGS)	
▭ Existing Tande Substation	△ Participating Unoccupied Structure	Waterfowl Production Area	
	△ Not Participating Unoccupied Structure	Wildlife Management Area	



ATWELL

The information contained on this map is proprietary and confidential. The use or disclosure of this information by you to third parties is prohibited by law and may give rise to civil or criminal liability.

SOURCE: USDA NAIP 2017 IMAGERY

Burke Wind Transmission Line Transmission Line Map

Burke County & Mountrail County, North Dakota

Client:
Burke Wind, LLC

Issue Date:
2/6/2019
Atwell, LLC Project:
16000947



HOLMEN/SPENCER
UNOCCUPIED STRUCTURE
NOT PARTICIPATING
526.5 FT. FROM POLE STRUCTURE

Transmission Line Plan	Exclusion Areas	Data	Administrative
● Proposed Structures	Archaeological Sites Not Shown Due to Confidentiality	Existing Natural Gas Pipeline (Velocity Suite)	Sections (PLSS)
— Transmission Line	Avoidance Areas	Proposed Transmission (Velocity Suite)	Townships (MCD)
— Aerial Overhead Crossing- No Direct Impacts Proposed	○ Receptor 500 Ft. Avoidance Area	Existing Transmission (Velocity Suite)	Counties
— Transmission Line 150 ft. Project Corridor	Project Participation	Landslide Deposits	
— Transmission Line 1 Mile Study Area	▲ Not Participating Occupied Receptor	Protected Areas (USGS)	
▨ Existing Tande Substation	▲ Participating Unoccupied Structure	Waterfowl Production Area	
	▲ Not Participating Unoccupied Structure	Wildlife Management Area	



The information contained on this map is proprietary and confidential. The use or disclosure of this information by you to third parties is prohibited by law and may give rise to civil or criminal liability.

SOURCE: USDA NAIP 2017 IMAGERY

Burke Wind Transmission Line Transmission Line Map

Burke County & Mountrail County, North Dakota



Transmission Line Plan	Exclusion Areas	Data	Sections (PLSS)
● Proposed Structures	Archaeological Sites Not Shown Due to Confidentiality	Existing Natural Gas Pipeline (Velocity Suite)	▭ Townships (MCD)
— Transmission Line	Avoidance Areas	Proposed Transmission (Velocity Suite)	▭ Counties
— Aerial Overhead Crossing- No Direct Impacts Proposed	○ Receptor 500 Ft. Avoidance Area	Existing Transmission (Velocity Suite)	
▭ Transmission Line 150 ft. Project Corridor	Project Participation	Landslide Deposits	
▭ Transmission Line 1 Mile Study Area	△ Not Participating Occupied Receptor	Protected Areas (USGS)	
▭ Existing Tande Substation	△ Participating Unoccupied Structure	Waterfowl Production Area	
	△ Not Participating Unoccupied Structure	Wildlife Management Area	

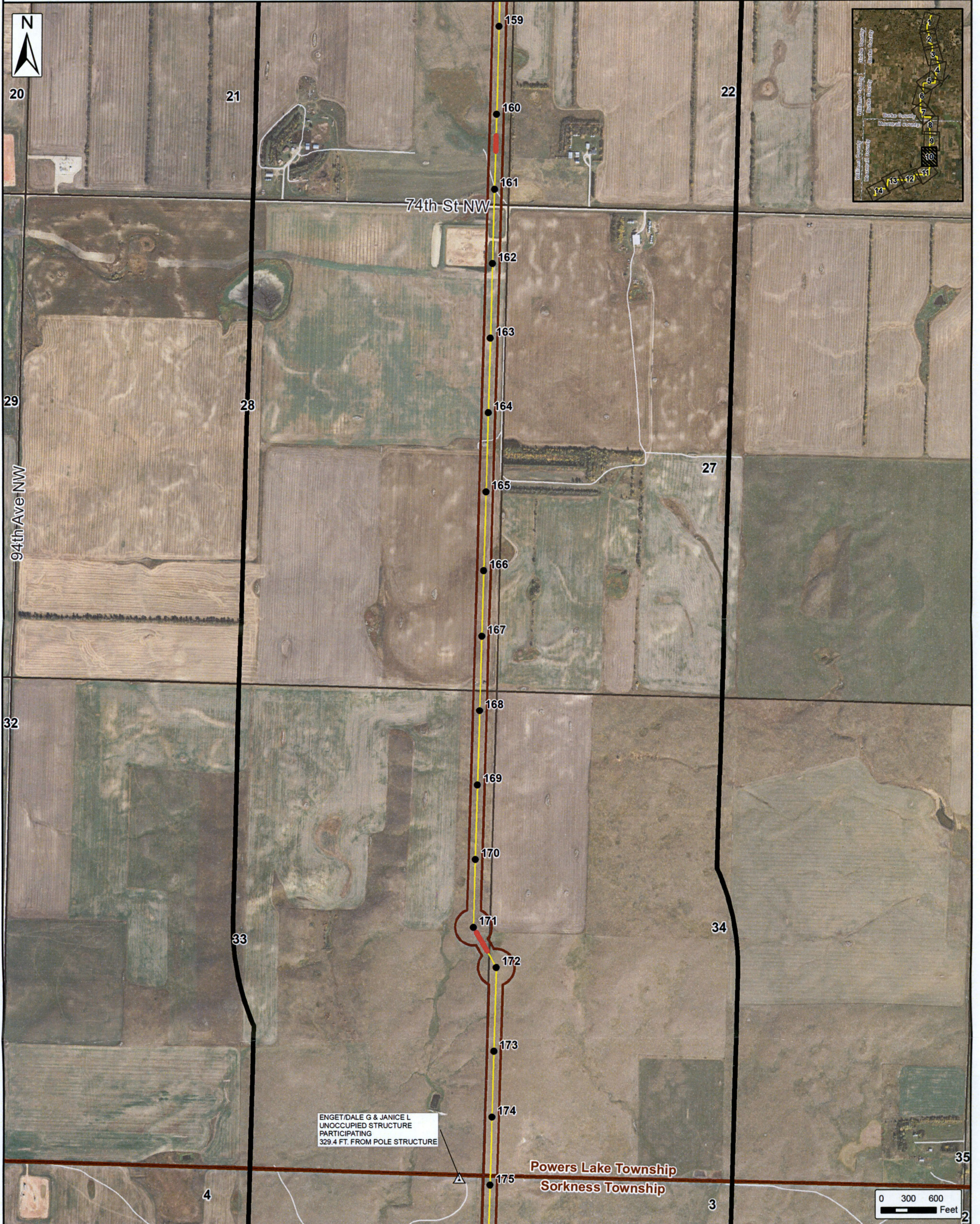


The information contained on this map is proprietary and confidential. The use or disclosure of this information by you to third parties is prohibited by law and may give rise to civil or criminal liability.


SOURCE: USDA NAIP 2017 IMAGERY

Burke Wind Transmission Line Transmission Line Map

Burke County & Mountrail County, North Dakota



Transmission Line Plan	Exclusion Areas	Data	Sections (PLSS)
● Proposed Structures	Archaeological Sites Not Shown Due to Confidentiality	Existing Natural Gas Pipeline (Velocity Suite)	Townships (MCD)
— Transmission Line	Avoidance Areas	Proposed Transmission (Velocity Suite)	Counties
— Aerial Overhead Crossing - No Direct Impacts Proposed	○ Receptor 500 Ft. Avoidance Area	Existing Transmission (Velocity Suite)	
— Transmission Line 150 ft. Project Corridor	Project Participation	Landslide Deposits	
— Transmission Line 1 Mile Study Area	△ Not Participating Occupied Receptor	Protected Areas (USGS)	
▣ Existing Tande Substation	△ Participating Unoccupied Structure	Waterfowl Production Area	
	△ Not Participating Unoccupied Structure	Wildlife Management Area	



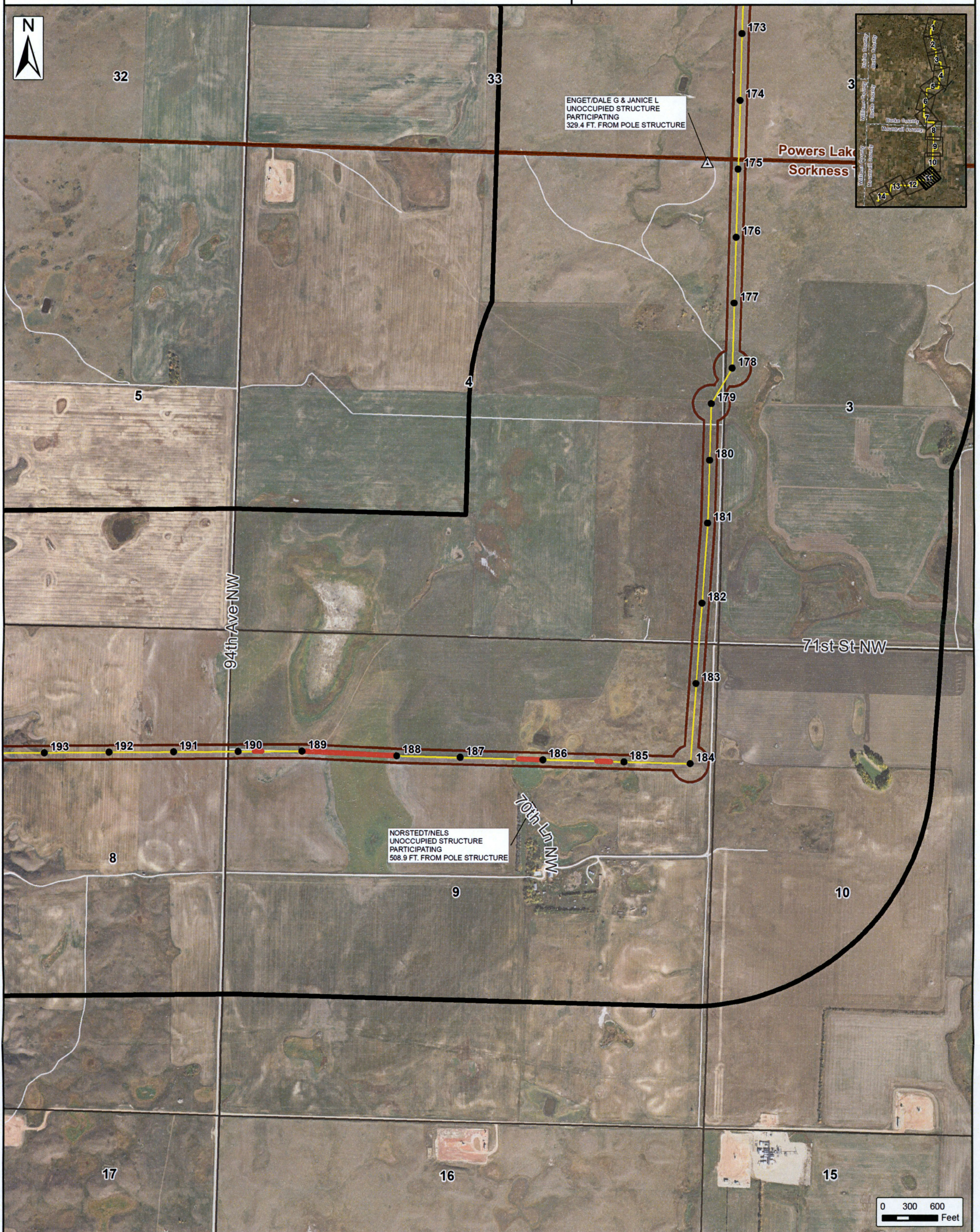
ATWELL

The information contained on this map is proprietary and confidential. The use or disclosure of this information by you to third parties is prohibited by law and may give rise to civil or criminal liability.

SOURCE: USDA NAIP 2017 IMAGERY

Burke Wind Transmission Line Transmission Line Map

Burke County & Mountrail County, North Dakota



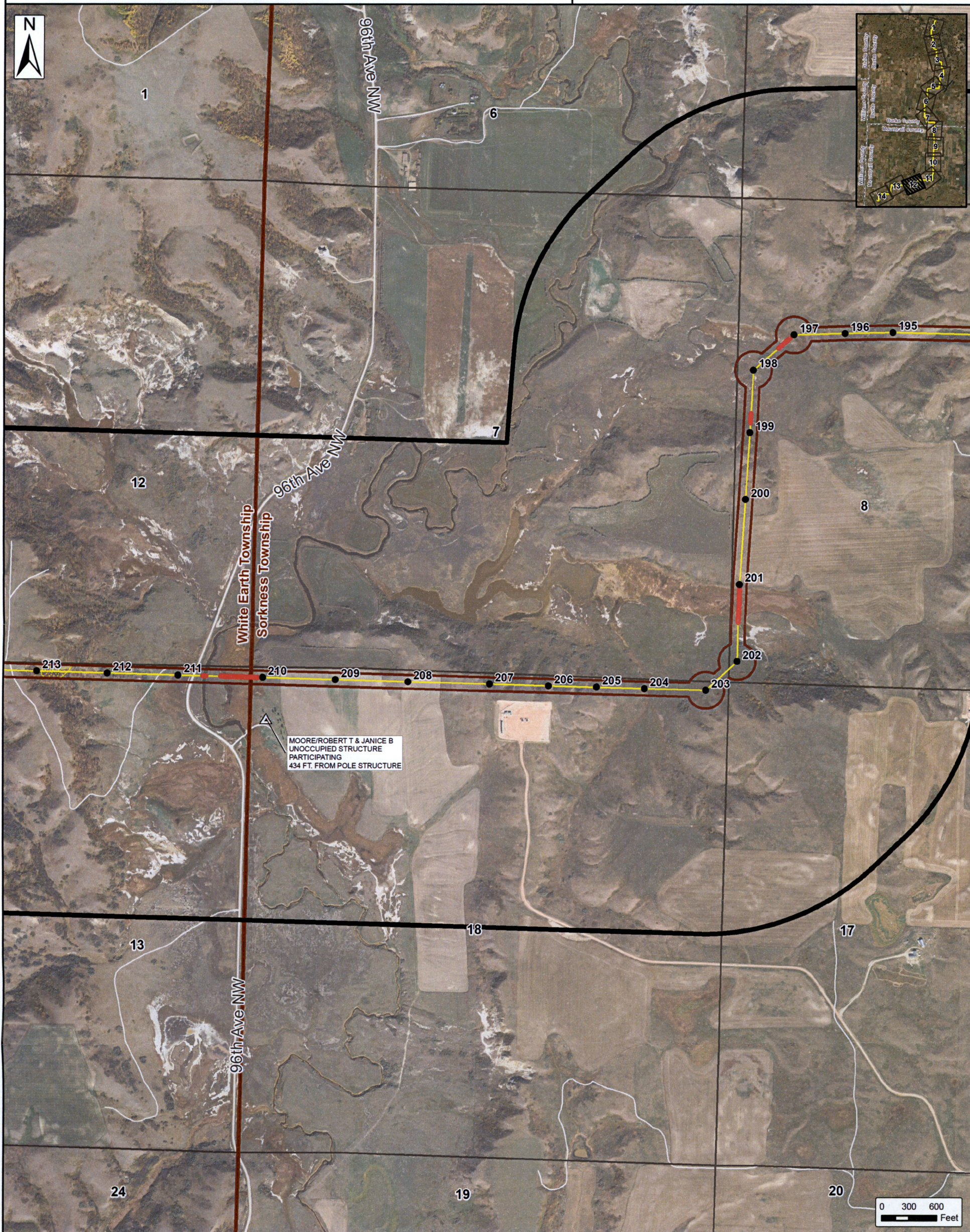
Transmission Line Plan	Exclusion Areas	Data	Sections (PLSS)
● Proposed Structures	Archaeological Sites Not Shown Due to Confidentiality	Existing Natural Gas Pipeline (Velocity Suite)	▭ Townships (MCD)
— Transmission Line	Avoidance Areas	Proposed Transmission (Velocity Suite)	▭ Counties
— Aerial Overhead Crossing - No Direct Impacts Proposed	○ Receptor 500 Ft. Avoidance Area	Existing Transmission (Velocity Suite)	
▭ Transmission Line 150 ft. Project Corridor	Project Participation	Landslide Deposits	
▭ Transmission Line 1 Mile Study Area	△ Not Participating Occupied Receptor	Protected Areas (USGS)	
▭ Existing Tande Substation	△ Participating Unoccupied Structure	Waterfowl Production Area	
	△ Not Participating Unoccupied Structure	Wildlife Management Area	



The information contained on this map is proprietary and confidential. The use or disclosure of this information by you to third parties is prohibited by law and may give rise to civil or criminal liability.

Burke Wind Transmission Line Transmission Line Map

Burke County & Mountrail County, North Dakota



Transmission Line Plan ● Proposed Structures — Transmission Line — Aerial Overhead Crossing- No Direct Impacts Proposed — Transmission Line 150 ft. Project Corridor — Transmission Line 1 Mile Study Area Existing Tande Substation	Exclusion Areas Archaeological Sites Not Shown Due to Confidentiality Avoidance Areas ○ Receptor 500 Ft. Avoidance Area Project Participation ▲ Not Participating Occupied Receptor ▲ Participating Unoccupied Structure ▲ Not Participating Unoccupied Structure	Data — Existing Natural Gas Pipeline (Velocity Suite) — Proposed Transmission (Velocity Suite) — Existing Transmission (Velocity Suite) — Landslide Deposits Protected Areas (USGS) — Waterfowl Production Area — Wildlife Management Area	— Sections (PLSS) — Townships (MCD) — Counties
--	--	--	--



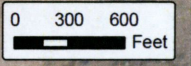
The information contained on this map is proprietary and confidential. The use or disclosure of this information by you to third parties is prohibited by law and may give rise to civil or criminal liability.

Burke Wind Transmission Line Transmission Line Map

Burke County & Mountrail County, North Dakota



Transmission Line Plan	Exclusion Areas	Data	Sections (PLSS)
● Proposed Structures	Archaeological Sites Not Shown Due to Confidentiality	— Existing Natural Gas Pipeline (Velocity Suite)	▭ Townships (MCD)
— Transmission Line	Avoidance Areas	⋯ Proposed Transmission (Velocity Suite)	▭ Counties
— Aerial Overhead Crossing - No Direct Impacts Proposed	○ Receptor 500 Ft. Avoidance Area	— Existing Transmission (Velocity Suite)	
▭ Transmission Line 150 ft. Project Corridor	Project Participation	▨ Landslide Deposits	
▭ Transmission Line 1 Mile Study Area	⚠ Not Participating Occupied Receptor	▭ Protected Areas (USGS)	
▭ Existing Tande Substation	⚠ Participating Unoccupied Structure	▭ Waterfowl Production Area	
	⚠ Not Participating Unoccupied Structure	▭ Wildlife Management Area	



The information contained on this map is proprietary and confidential. The use or disclosure of this information by you to third parties is prohibited by law and may give rise to civil or criminal liability.

SOURCE: USDA NAIP 2017 IMAGERY

Burke Wind Transmission Line Transmission Line Map

Burke County & Mountrail County, North Dakota



Transmission Line Plan <ul style="list-style-type: none"> Proposed Structures Transmission Line Aerial Overhead Crossing- No Direct Impacts Proposed Transmission Line 150 ft. Project Corridor Transmission Line 1 Mile Study Area Existing Tande Substation 	Exclusion Areas <ul style="list-style-type: none"> Archaeological Sites Not Shown Due to Confidentiality Avoidance Areas <ul style="list-style-type: none"> Receptor 500 Ft. Avoidance Area Project Participation <ul style="list-style-type: none"> Not Participating Occupied Receptor Participating Unoccupied Structure Not Participating Unoccupied Structure 	Data <ul style="list-style-type: none"> Existing Natural Gas Pipeline (Velocity Suite) Proposed Transmission (Velocity Suite) Existing Transmission (Velocity Suite) Landslide Deposits Protected Areas (USGS) Waterfowl Production Area Wildlife Management Area 	<ul style="list-style-type: none"> Sections (PLSS) Townships (MCD) Counties
---	---	--	--

SOURCE: USDA NAIP 2017 IMAGERY



The information contained on this map is proprietary and confidential. The use or disclosure of this information by you to third parties is prohibited by law and may give rise to civil or criminal liability.