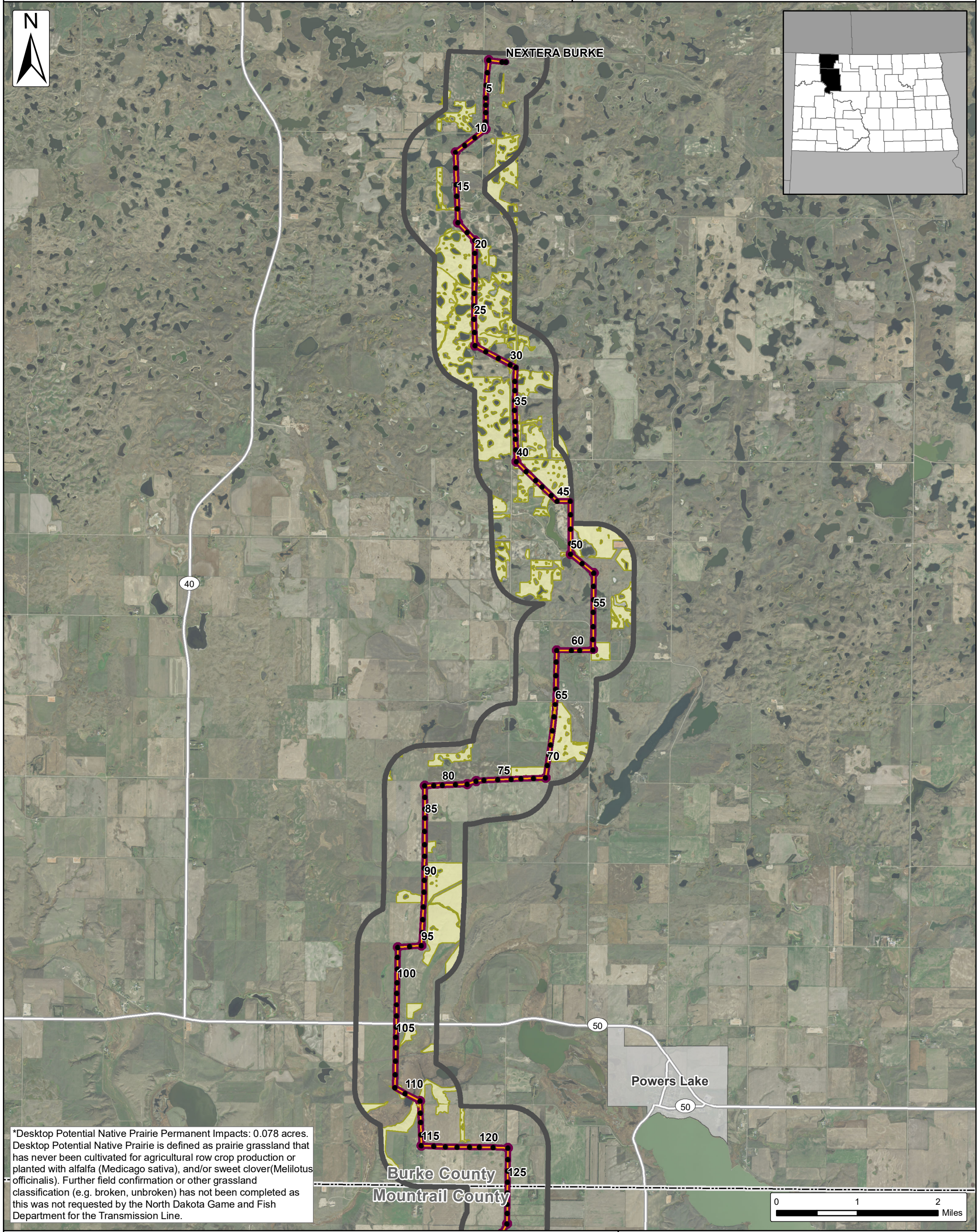
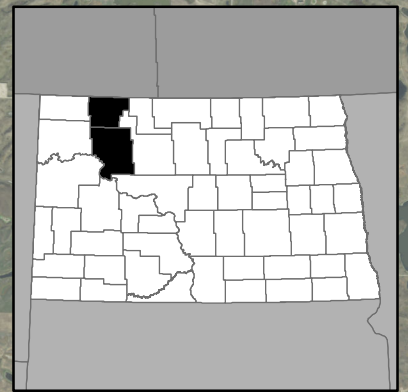


Burke Wind Transmission Line

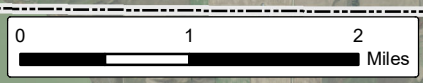
Native Prairie Map - Page 1 of 2
Burke County & Mountrail County, North Dakota

Client:
Burke Wind, LLC

Issue Date:
3/26/2019
Atwell, LLC Project:
16000947



*Desktop Potential Native Prairie Permanent Impacts: 0.078 acres. Desktop Potential Native Prairie is defined as prairie grassland that has never been cultivated for agricultural row crop production or planted with alfalfa (*Medicago sativa*), and/or sweet clover (*Melilotus officinalis*). Further field confirmation or other grassland classification (e.g. broken, unbroken) has not been completed as this was not requested by the North Dakota Game and Fish Department for the Transmission Line.



- Project Plan**
- Proposed Structures
 - Transmission Line
 - Transmission Line 150 ft. Project Corridor
 - Transmission Line 1 Mile Study Area
 - Existing Tande Substation

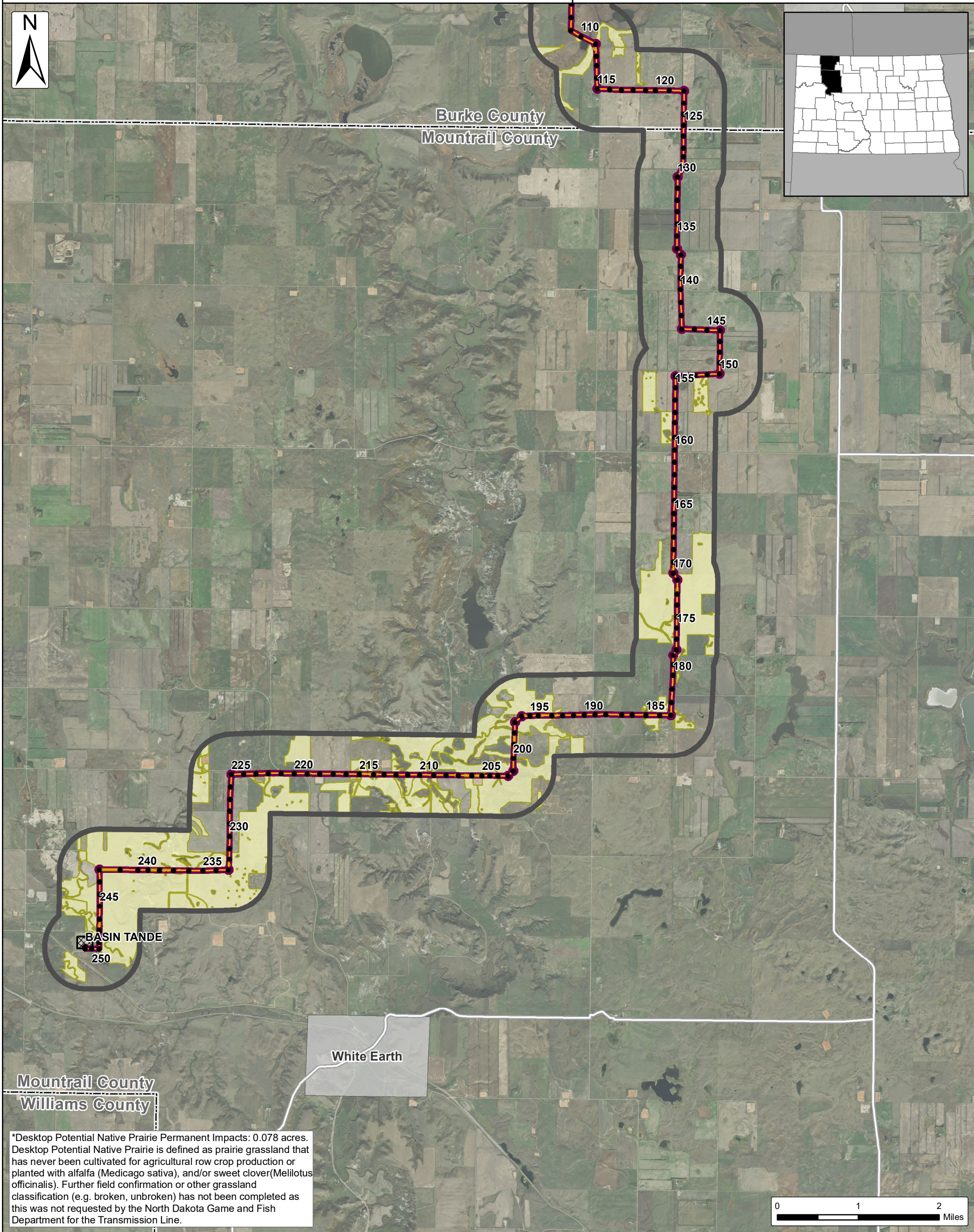
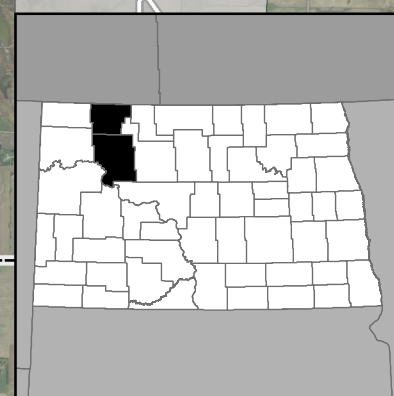
- Data**
- Desktop Potential Native Prairie*
 - Cities
 - Counties

Burke Wind Transmission Line

Native Prairie Map - Page 2 of 2
Burke County & Mountrail County, North Dakota

Client:
Burke Wind, LLC

Issue Date:
3/26/2019
Atwell, LLC Project:
16000947



*Desktop Potential Native Prairie Permanent Impacts: 0.078 acres. Desktop Potential Native Prairie is defined as prairie grassland that has never been cultivated for agricultural row crop production or planted with alfalfa (*Medicago sativa*), and/or sweet clover (*Melilotus officinalis*). Further field confirmation or other grassland classification (e.g. broken, unbroken) has not been completed as this was not requested by the North Dakota Game and Fish Department for the Transmission Line.

- Project Plan**
- Proposed Structures
 - Transmission Line
 - ▭ Transmission Line 150 ft. Project Corridor
 - ▭ Transmission Line 1 Mile Study Area
 - ▨ Existing Tande Substation

- Data**
- ▭ Desktop Potential Native Prairie*
 - ▭ Cities
 - ▭ Counties



The information contained on this map is proprietary and confidential. The use or disclosure of this information by you to third parties is prohibited by law and may give rise to civil or criminal liability.