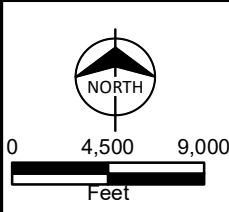
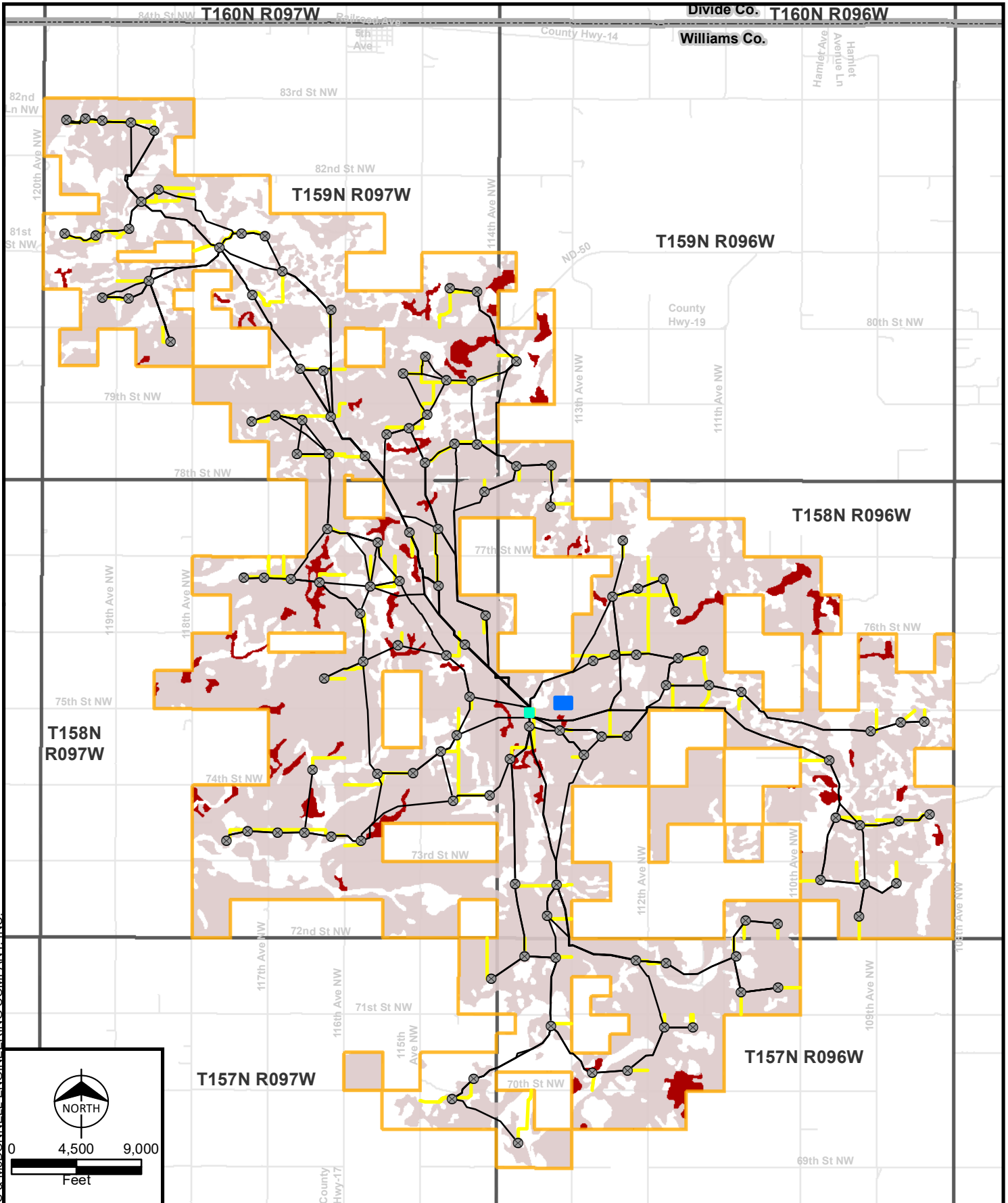


Path: Z:\Clients\ENS\TradeWindEnr\104200_Aurora\Studies\Geospatial\DataFiles\ArcDocs\NDPSC_WindFarm_Application\NDPSC_WindFarm_Application\Exhibit9_Prime Farmland.mxd_jdringman 9/26/2018
 COPYRIGHT © 2018 BURNS & McDONNELL ENGINEERING COMPANY, INC.



- ⊗ Turbine
 - ▭ Project Area
 - Collection Line
 - Access Road
 - ▭ Laydown Yard
 - ▭ Substation
 - Prime farmland
 - Farmland of Statewide Importance
 - ▭ County Boundary
 - ▭ Township/Range
- Turbines are not to scale



Exhibit 9
 Prime and Unique Farmland
 Aurora Wind Project
 Wind Farm
 Williams County, North Dakota