



January 23, 2019

Mr. Darrell Nitschke  
Executive Secretary  
North Dakota Public Service Commission  
600 E. Boulevard, Dept. 408  
Bismarck, ND 58505-0480

Re: Aurora Wind Project, LLC's Application for a Certificate of Site Compatibility for the Aurora Wind Project, Williams County, North Dakota  
Case No. PU-18-352  
and  
Aurora Wind Project, LLC's Consolidated Application for a Certificate of Corridor Compatibility and Route Permit for the Aurora Wind Project Transmission Line in Williams and Mountrail Counties, North Dakota  
Case No. PU-18-351

Dear Mr. Nitschke:

This Technical Memo contains the results of the completed wetland work for Aurora Wind Project (Project). Burns & McDonnell Engineering Company, Inc. was retained by Aurora Wind Project, LLC to provide wetland delineation services for the Project in Mountrail and Williams Counties, North Dakota. The wetland delineation was completed July 19 through 26, 2018. The survey area included in the wetland delineation totaled approximately 4,436 acres.

A wetland delineation was conducted in accordance with the 1987 Corps of Engineers Wetlands Delineation Manual and the 2010 Regional Supplement to the Corps of Engineers Wetland Delineation Manual: Great Plains Region – Version 2.0 (Regional Supplement). Sample plots were established at multiple locations, and Wetland Determination Data Forms from the Regional Supplement were completed to characterize the Project. Vegetation, soil conditions, and hydrologic indicators were recorded at each of these sample plots. Locations of sample plots and other identified features were surveyed using a sub-meter accurate global positioning system (GPS) unit.

A total of 147 wetlands, totaling 66.97 acres, and 6 stream channels, totaling 2,954 linear feet, were identified during the delineation. Of the 147 wetlands, 131 were classified as palustrine emergent (PEM), 13 were classified as palustrine unconsolidated bottom (PUB), and three were classified as palustrine aquatic bottom (PAB); all classifications were based on the Cowardin Classification System. Of the 6 stream channels, two streams were intermittent, three were ephemeral, and one stream exhibited both ephemeral and intermittent flow at different survey locations. Impacts to wetlands and streams will be minimized to the extent practical based on the constructability of the Project and landowner preference. The developer intends to construct the Project under the United States Corps of Engineers regulatory thresholds for the appropriate Nationwide Permit (NWP) under Section 404 of the Clean Water Act; applicable NWPs could include 12, 14, 33, or 51. A formal wetland delineation report for the Project has been completed.

90 PU-18-352 Filed 02/25/2019 Pages: 12  
Exhibit 20 - Wetlands and Waterbodies Technical Memo  
Aurora Wind Project, LLC

87 PU-18-351 Filed 02/25/2019 Pages: 12  
Exhibit 20 - Wetlands and Waterbodies Technical Memo  
Aurora Wind Project, LLC



Mr. Darrell Nitschke  
North Dakota Public Service Commission  
January 23, 2019  
Page 2

If you have any questions, please do not hesitate to contact me by telephone at (816) 822-4311 or by email at [jbailey@burnsmcd.com](mailto:jbailey@burnsmcd.com).

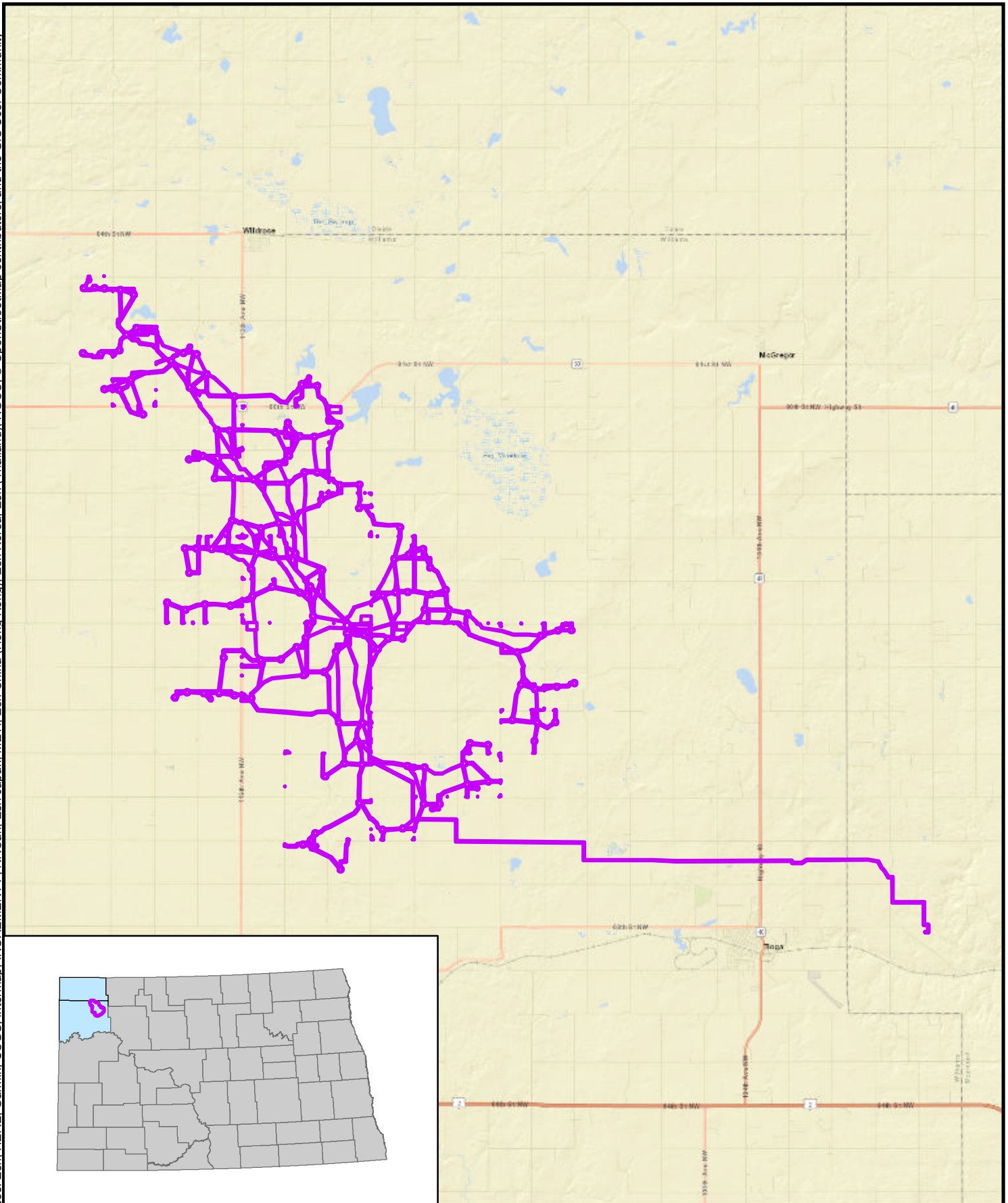
Sincerely,


A handwritten signature in black ink that reads "Justin E. Bailey". The signature is written in a cursive style.

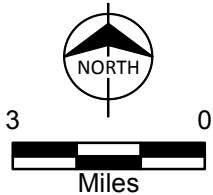
Justin E. Bailey  
Project Manager

Enclosures

cc: Dave Iadarola, Aurora Wind  
Jennifer Dean, Aurora Wind  
Mollie Smith, Fredrikson & Byron

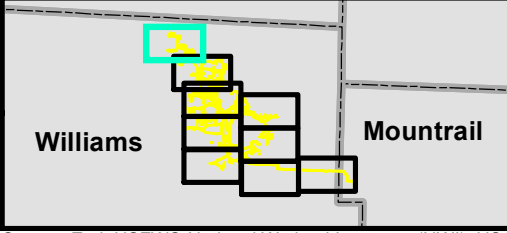
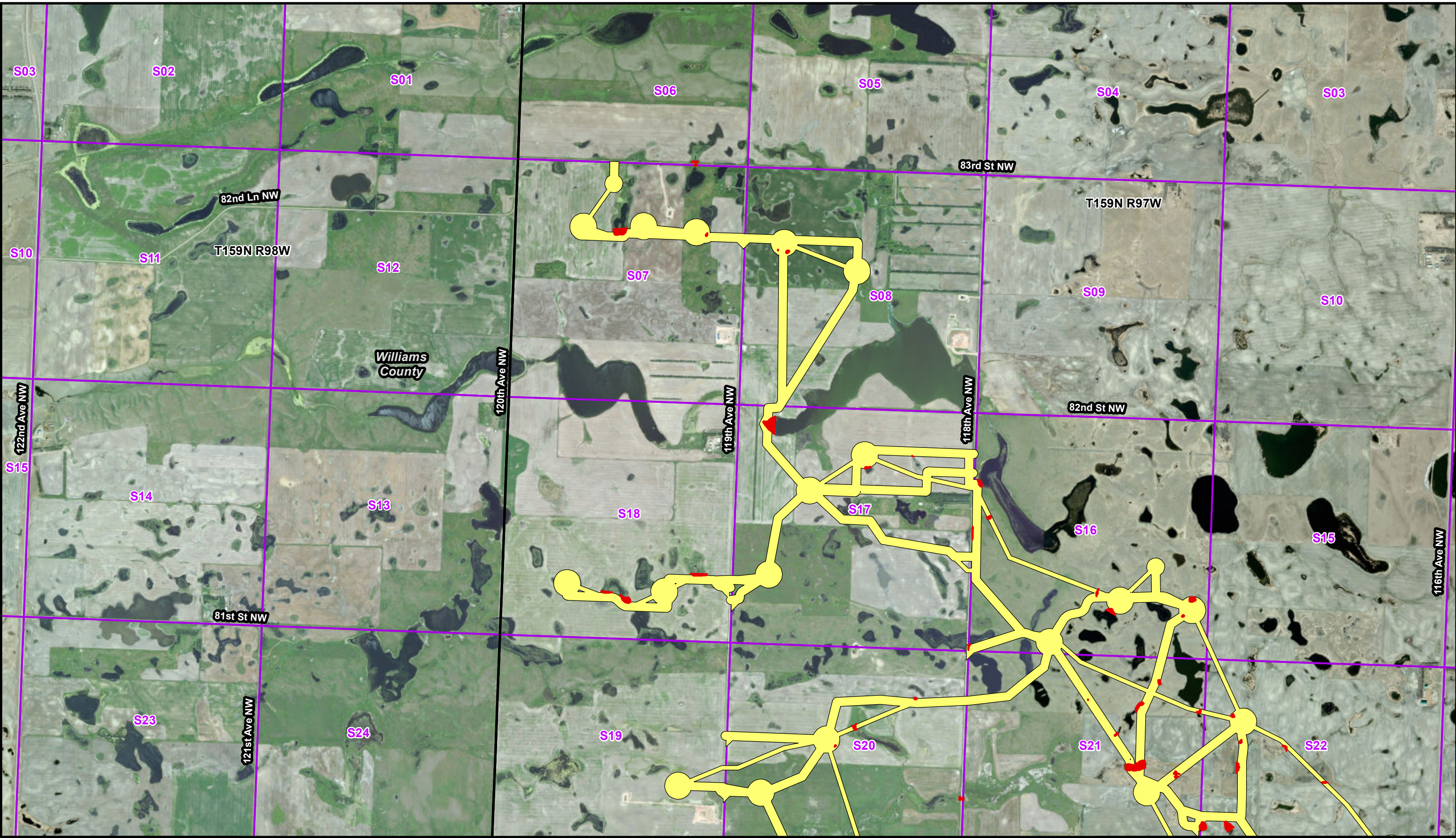


 Survey Corridor




Aurora Wind Farm  
Overview Map  
Aurora Wind Project, LLC  
Mountrail and Williams Co., ND

Path: Z:\Clients\ENS\TradeWind\Enr\104200\_Aurora\Studies\Geospatial\DataFiles\ArcDocs\Wetlands\104200\_Aurora\_TechnicalMemo\_Figure.mxd reWilliams 1/23/2019  
COPYRIGHT © 2019 BURNS & McDONNELL ENGINEERING COMPANY, INC.  
Service Layer Credits: Source: Esri, DigitalGlobe, GeoEye, Earthstar Geographics, CNES/Airbus DS, USDA, USGS, AeroGRID, IGN, and the GIS User Community




 Survey Corridor

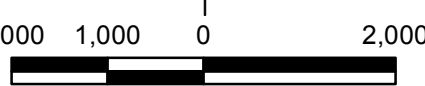
 Delineated Wetland

 Delineated Stream

NORTH



2,000 1,000 0 2,000

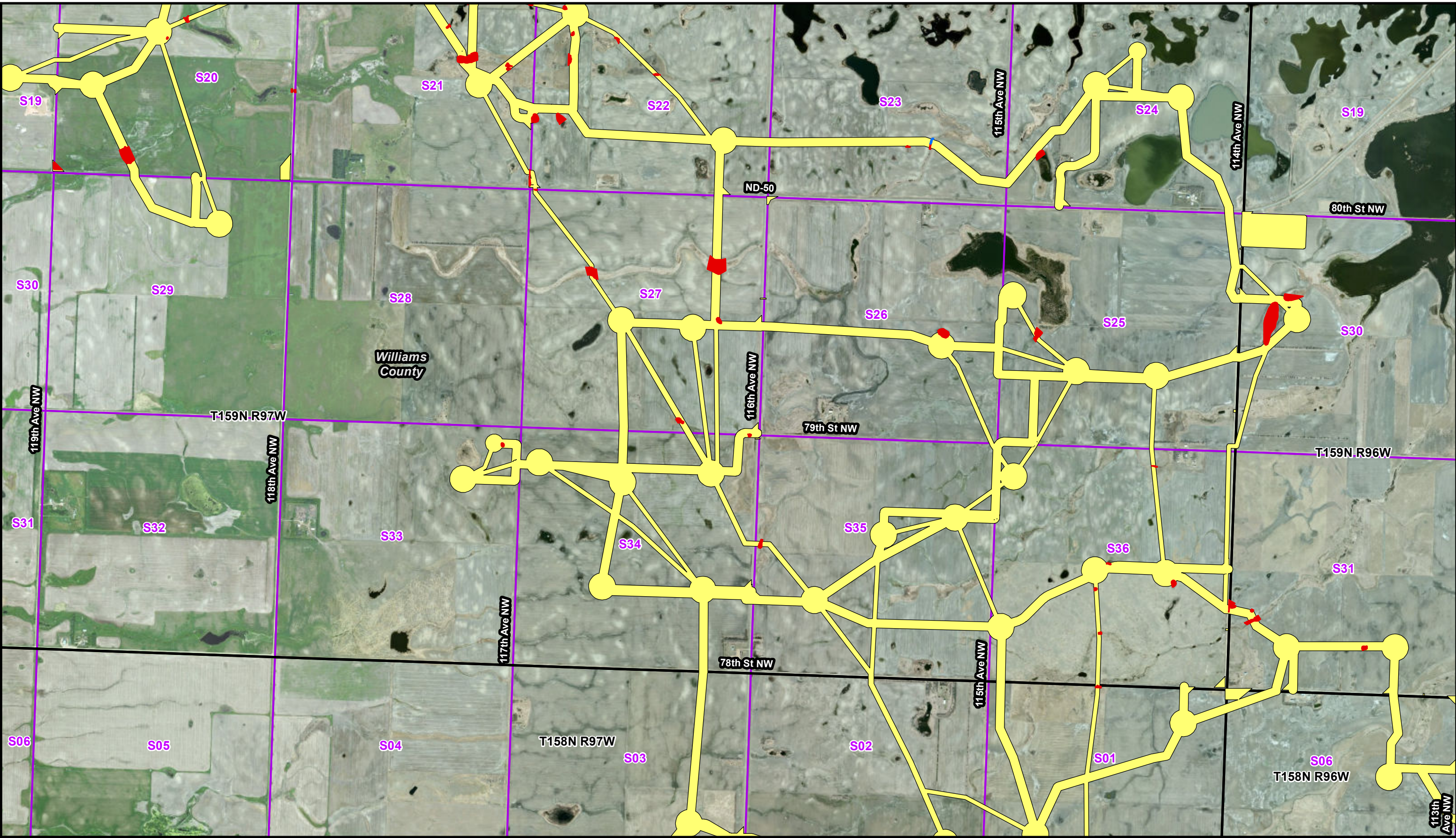


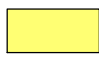


Scale in Feet




Location Map of Wetlands and Other Water Resources  
Aurora Wind Project  
Aurora Wind Project, LLC  
Williams & Mountrail Counties, ND  
Page 1 of 9

Path: Z:\Clients\ENS\TradeWind\Enr\104200\_Aurora\Studies\Geospatial\ArcDataFiles\Wetlands\104200\_Aurora\_TechnicalMemo\_Figure.mxd reWilliams 1/23/2019  
COPYRIGHT © 2019 BURNS & McDONNELL ENGINEERING COMPANY, INC.  
Service Layer Credits: Source: Esri, DigitalGlobe, GeoEye, Earthstar Geographics, CNES/Airbus DS, USDA, USGS, AeroGRID, IGN, and the GIS User Community



 Survey Corridor     Delineated Wetland     Delineated Stream

 NORTH

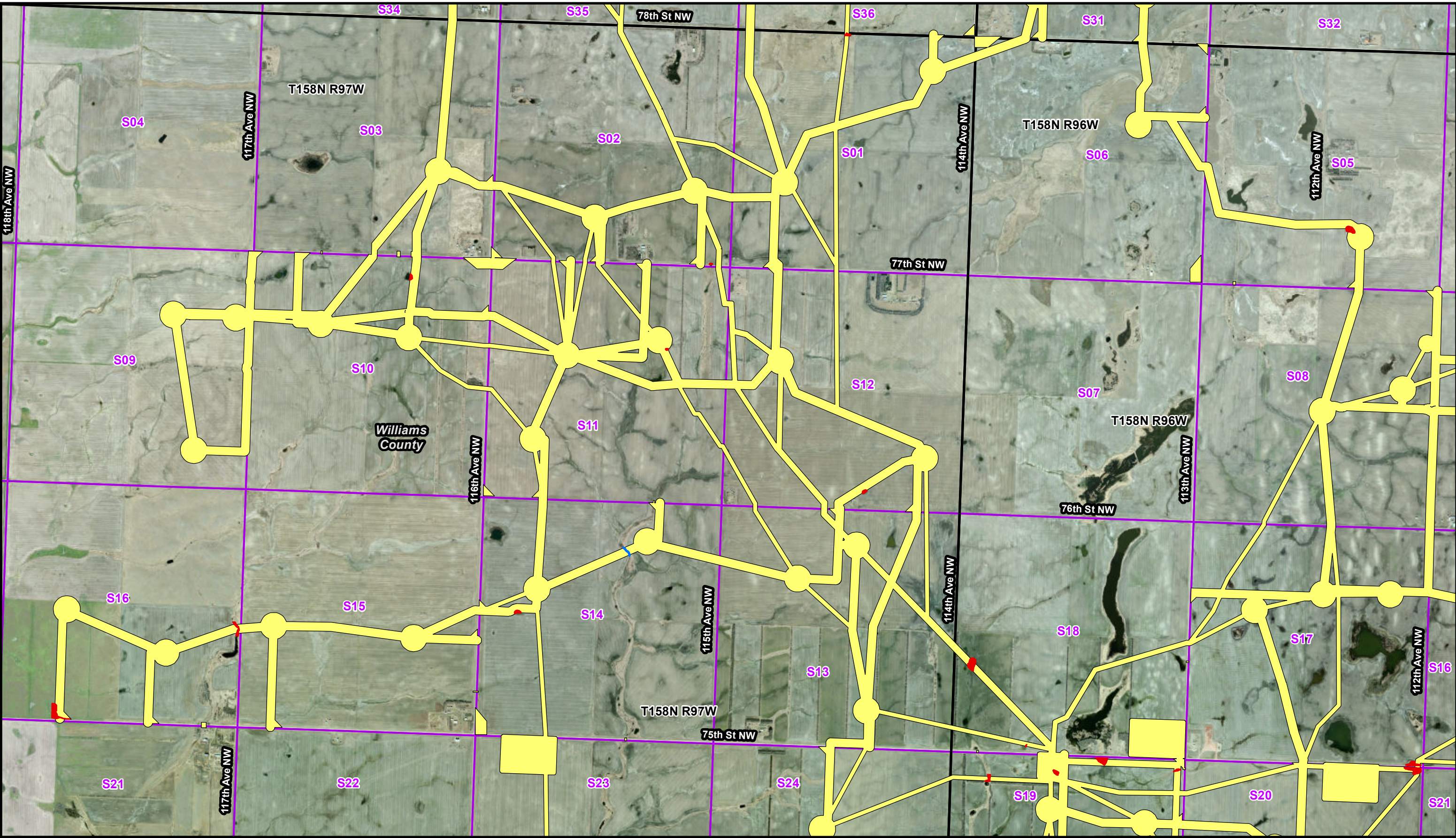
2,000 1,000 0 2,000

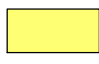
Scale in Feet



Location Map of Wetlands and  
Other Water Resources  
Aurora Wind Project  
Aurora Wind Project, LLC  
Williams & Mountrail Counties, ND  
Page 2 of 9

Path: Z:\Clients\ENS\TradeWind\Enr\104200\_Aurora\Studies\Geospatial\DataFiles\ArcDocs\Wetlands\104200\_Aurora\_TechnicalMemo\_Figure.mxd reWilliams 1/23/2019  
COPYRIGHT © 2019 BURNS & McDONNELL ENGINEERING COMPANY, INC.  
Service Layer Credits: Source: Esri, DigitalGlobe, GeoEye, Earthstar Geographics, CNES/Airbus DS, USDA, USGS, AeroGRID, IGN, and the GIS User Community



 Survey Corridor     Delineated Wetland     Delineated Stream

 NORTH

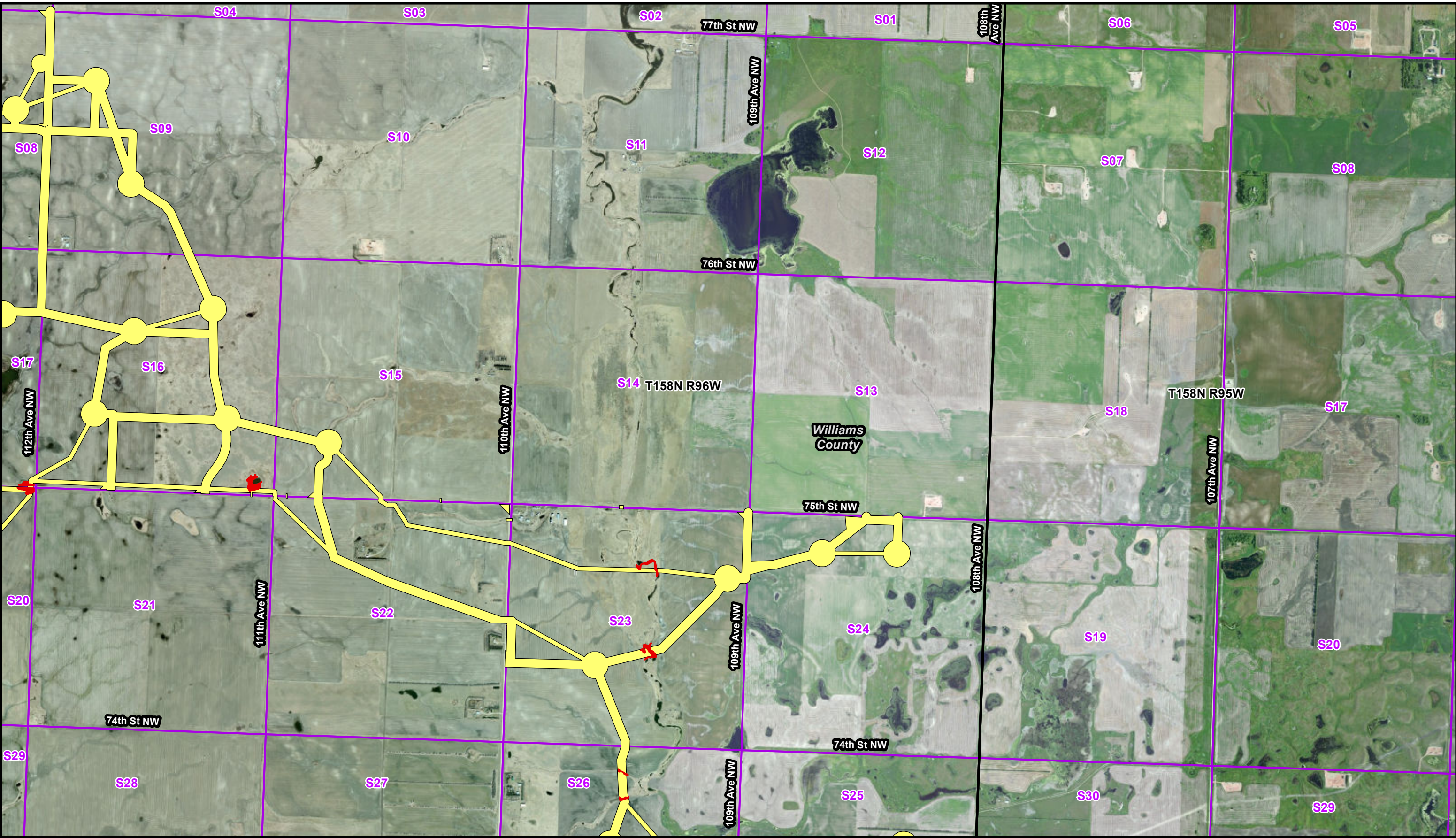
2,000 1,000 0 2,000

Scale in Feet



Location Map of Wetlands and Other Water Resources  
Aurora Wind Project  
Aurora Wind Project, LLC  
Williams & Mountrail Counties, ND  
Page 3 of 9

Path: Z:\Clients\ENS\TradeWind\Enr\104200\_Aurora\Studies\Geospatial\DataFiles\ArcDocs\Wetlands\104200\_Aurora\_TechnicalMemo\_Figure.mxd reWilliams 1/23/2019  
COPYRIGHT © 2019 BURNS & McDONNELL ENGINEERING COMPANY, INC.  
Service Layer Credits: Source: Esri, DigitalGlobe, GeoEye, Earthstar Geographics, CNES/Airbus DS, USDA, USGS, AeroGRID, IGN, and the GIS User Community



**Survey Corridor** **Delineated Wetland** **Delineated Stream**

NORTH

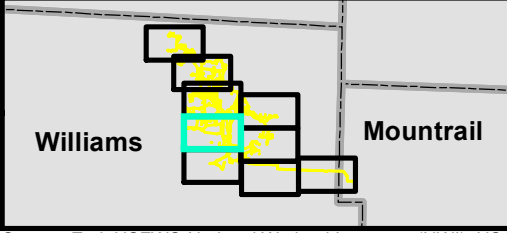
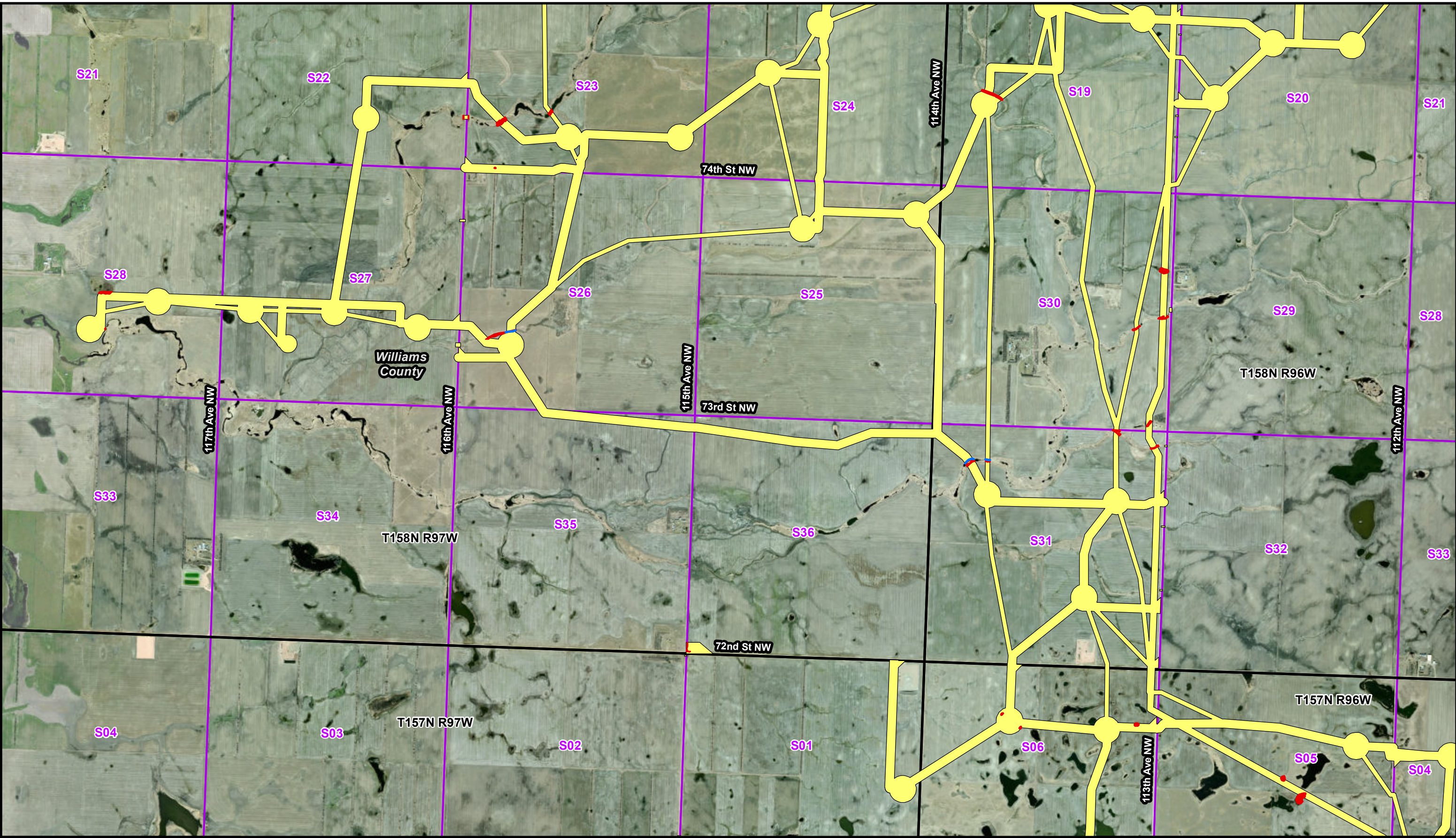
2,000 1,000 0 2,000


Scale in Feet





Location Map of Wetlands and Other Water Resources  
Aurora Wind Project  
Aurora Wind Project, LLC  
Williams & Mountrail Counties, ND  
Page 4 of 9

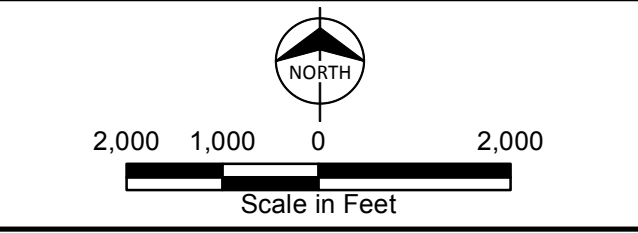
Path: Z:\Clients\ENS\TradeWind\Enr\104200\_Aurora\Studies\Geospatial\DataFiles\ArcDocs\Wetlands\104200\_Aurora\_TechnicalMemo\_Figure.mxd reWilliams 1/23/2019  
COPYRIGHT © 2019 BURNS & MCDONNELL ENGINEERING COMPANY, INC.  
Service Layer Credits: Source: Esri, DigitalGlobe, GeoEye, Earthstar Geographics, CNES/Airbus DS, USDA, USGS, AeroGRID, IGN, and the GIS User Community



 Survey Corridor

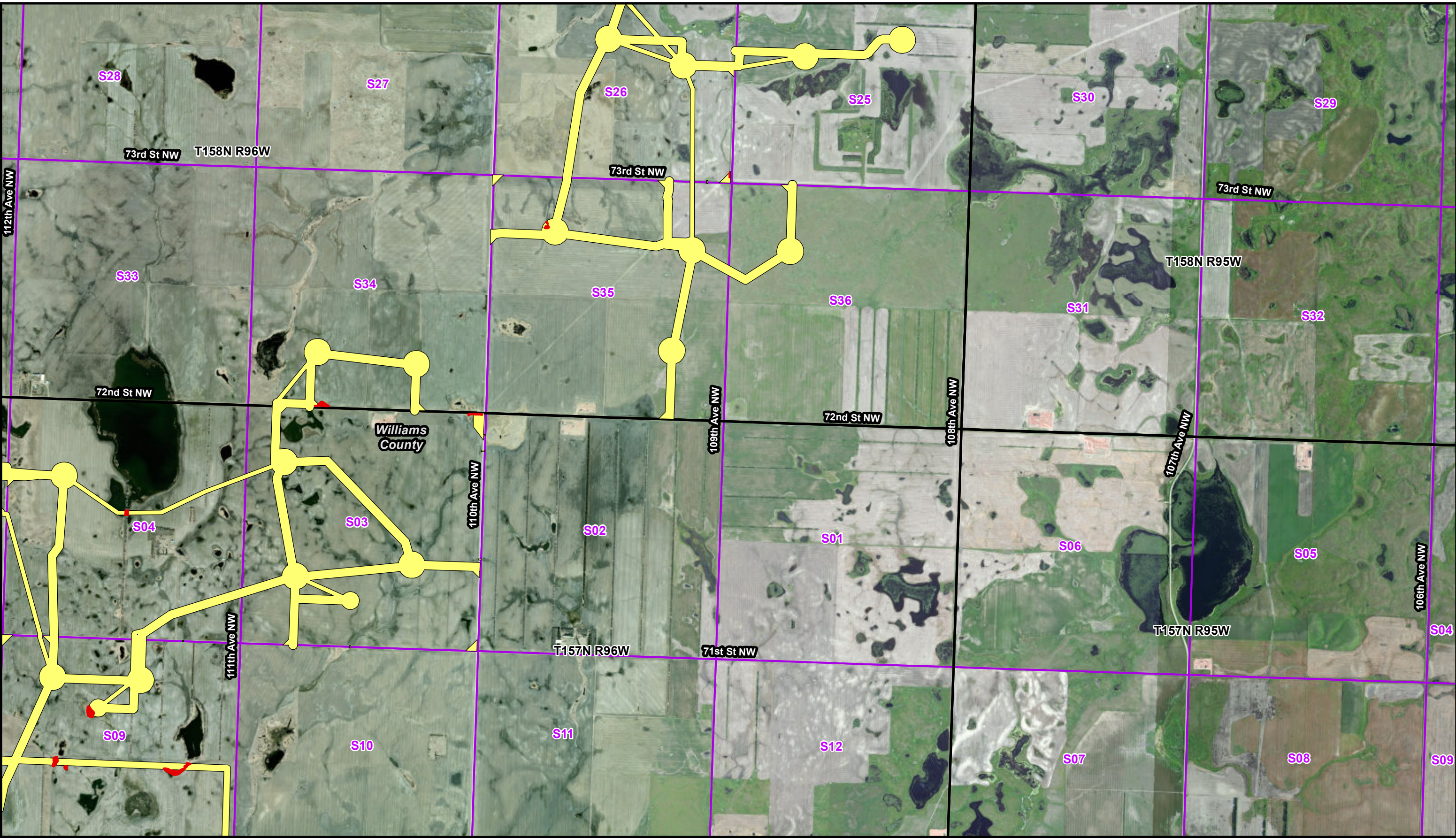
 Delineated Wetland


 Delineated Stream

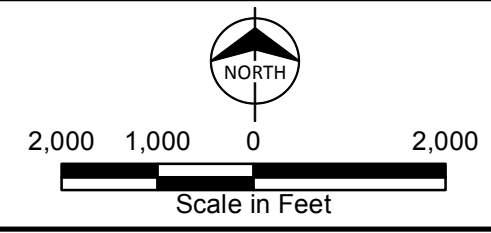


Location Map of Wetlands and Other Water Resources  
Aurora Wind Project  
Aurora Wind Project, LLC  
Williams & Mountrail Counties, ND  
Page 5 of 9

Path: Z:\Clients\ENS\TradeWind\Enr\104200\_Aurora\Studies\Geospatial\ArcDocs\Wetlands\104200\_Aurora\_TechnicalMemo\_Figure.mxd reWilliams 1/23/2019  
COPYRIGHT © 2019 BURNS & McDONNELL ENGINEERING COMPANY, INC.  
Service Layer Credits: Source: Esri, DigitalGlobe, GeoEye, Earthstar Geographics, CNES/Airbus DS, USDA, USGS, AeroGRID, IGN, and the GIS User Community

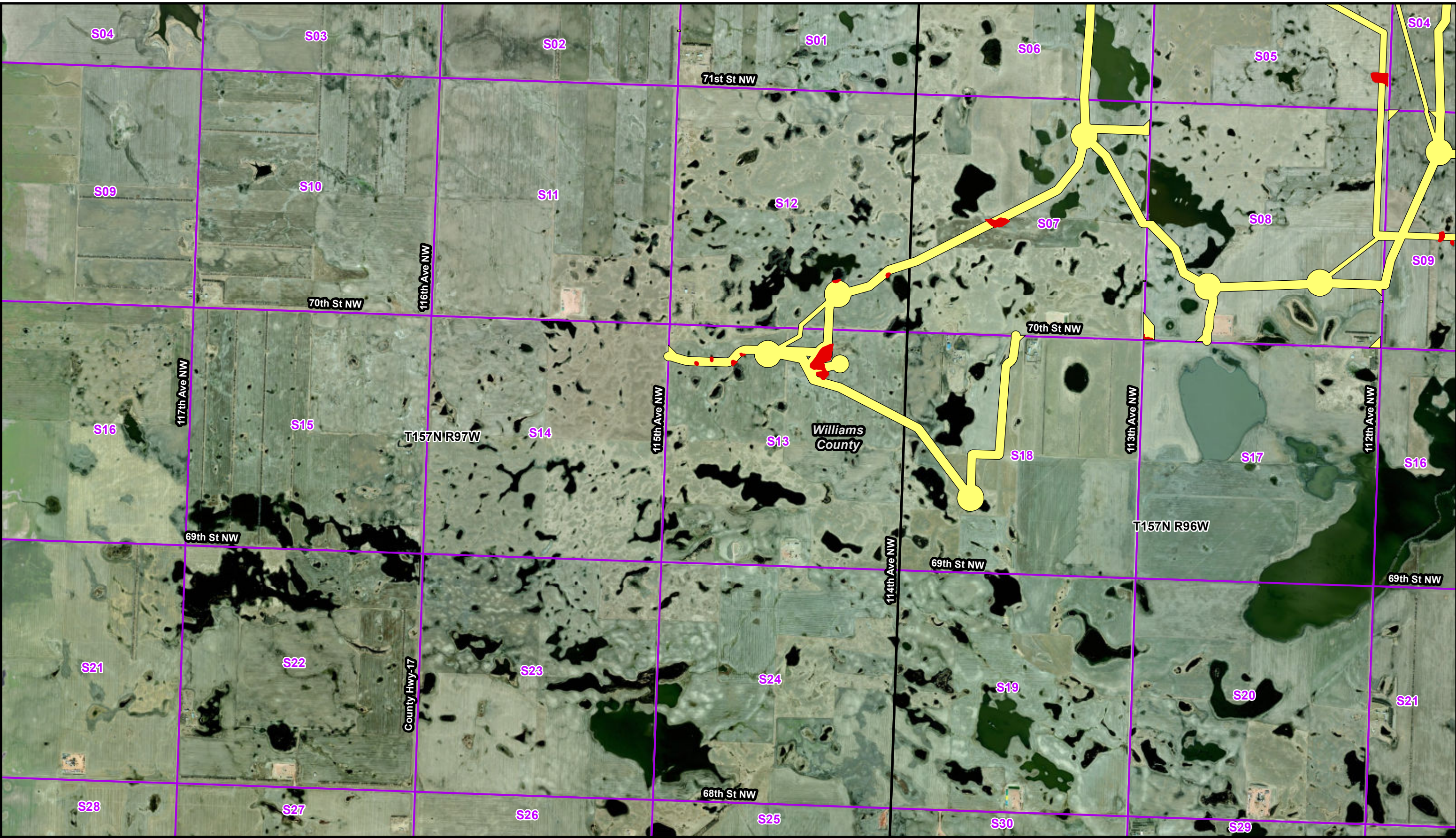


 Survey Corridor     Delineated Wetland     Delineated Stream

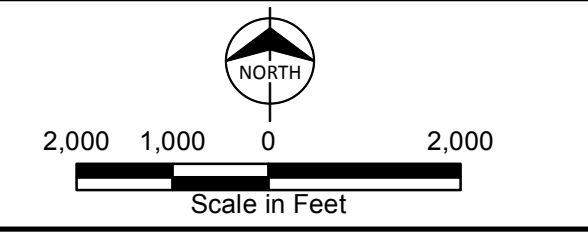


Location Map of Wetlands and Other Water Resources  
Aurora Wind Project  
Aurora Wind Project, LLC  
Williams & Mountrail Counties, ND  
Page 6 of 9

Path: Z:\Clients\ENS\TradeWind\Enr\104200\_Aurora\Studies\Geospatial\DataFiles\ArcDocs\Wetlands\104200\_Aurora\_TechnicalMemo\_Figure.mxd reWilliams 1/23/2019  
COPYRIGHT © 2019 BURNS & McDONNELL ENGINEERING COMPANY, INC.  
Service Layer Credits: Source: Esri, DigitalGlobe, GeoEye, Earthstar Geographics, CNES/Airbus DS, USDA, USGS, AeroGRID, IGN, and the GIS User Community




 Survey Corridor     Delineated Wetland     Delineated Stream





Location Map of Wetlands and  
Other Water Resources  
Aurora Wind Project  
Aurora Wind Project, LLC  
Williams & Mountrail Counties, ND  
Page 7 of 9


Path: Z:\Clients\ENS\TradeWind\104200\_Aurora\Studies\Geospatial\DataFiles\ArcDocs\Wetlands\104200\_Aurora\_TechnicalMemo\_Figure.mxd reWilliams 1/23/2019  
COPYRIGHT © 2019 BURNS & McDONNELL ENGINEERING COMPANY, INC.  
Service Layer Credits: Source: Esri, DigitalGlobe, GeoEye, Earthstar Geographics, CNES/Airbus DS, USDA, USGS, AeroGRID, IGN, and the GIS User Community



 Survey Corridor

 Delineated Wetland

 Delineated Stream

 NORTH

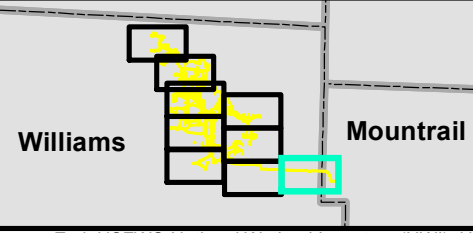
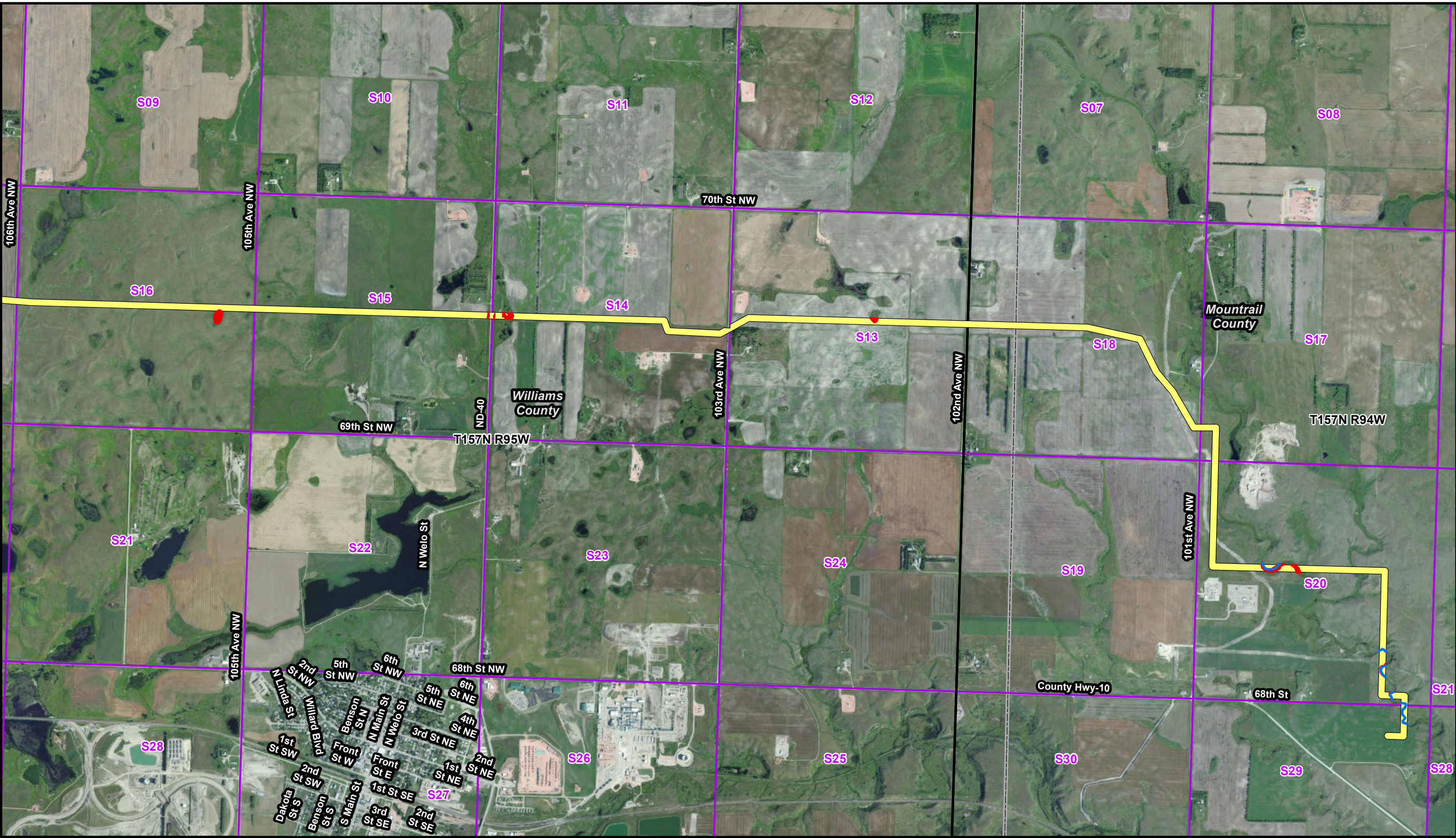
2,000 1,000 0 2,000

Scale in Feet

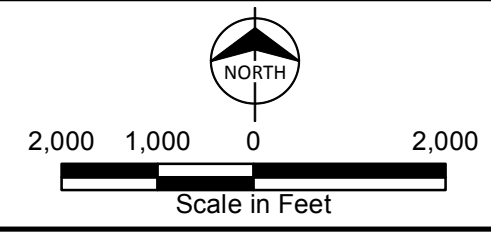


Location Map of Wetlands and Other Water Resources  
Aurora Wind Project  
Aurora Wind Project, LLC  
Williams & Mountrail Counties, ND  
Page 8 of 9

Path: Z:\Clients\ENS\TradeWindEmr\104200\_Aurora\Studies\Geospatial\ArcDocs\Wetlands\104200\_Aurora\_TechnicalMemo\_Figure.mxd reWilliams 1/23/2019  
 COPYRIGHT © 2019 BURNS & McDONNELL ENGINEERING COMPANY, INC.  
 Service Layer Credits: Source: Esri, DigitalGlobe, GeoEye, Earthstar Geographics, CNES/Airbus DS, USDA, USGS, AeroGRID, IGN, and the GIS User Community



Survey Corridor
  Delineated Wetland
  Delineated Stream



Location Map of Wetlands and  
 Other Water Resources  
 Aurora Wind Project  
 Aurora Wind Project, LLC  
 Williams & Mountrail Counties, ND  
 Page 9 of 9