

EXHIBIT E - Wetland Memo
[PU-18-352 - Certification of Benjamin Conor Branch]

August 20, 2019

Mr. Darrell Nitschke
Executive Secretary
North Dakota Public Service Commission
600 E. Boulevard, Dept. 408
Bismarck, ND 58505-0480

Re: Aurora Wind Project, LLC's Application for a Certificate of Site Compatibility for the Aurora Wind Project, Williams County, North Dakota
Case No. PU-18-352
and
Aurora Wind Project, LLC's Consolidated Application for a Certificate of Corridor Compatibility and Route Permit for the Aurora Wind Project Transmission Line in Williams and Mountrail Counties, North Dakota
Case No. PU-18-351

Dear Mr. Nitschke:

This Technical Memo contains the results of the completed wetland work for Aurora Wind Project (Project). Burns & McDonnell Engineering Company, Inc. was retained by Aurora Wind Project, LLC to provide wetland delineation services for the Project in Mountrail and Williams Counties, North Dakota. The wetland delineation included an initial field survey effort July 19 through 26, 2018 and a follow-up field survey effort July 17 to July 20, 2019. The survey area included in the wetland delineation totaled approximately 5,444 acres.

The wetland delineation was conducted in accordance with the 1987 Corps of Engineers Wetlands Delineation Manual and the 2010 Regional Supplement to the Corps of Engineers Wetland Delineation Manual: Great Plains Region – Version 2.0 (Regional Supplement). Sample plots were established at multiple locations, and Wetland Determination Data Forms from the Regional Supplement were completed to characterize the Project. Vegetation, soil conditions, and hydrologic indicators were recorded at each of these sample plots. Locations of sample plots and other identified features were surveyed using a sub-meter accurate global positioning system (GPS) unit.

A total of 173 wetlands, totaling 74.43 acres, and 6 stream channels, totaling 3,098 linear feet, were identified during the delineation. Of the 173 wetlands, 156 were classified as palustrine emergent (PEM), 14 were classified as palustrine unconsolidated bottom (PUB), and three were classified as palustrine aquatic bottom (PAB); all classifications were based on the Cowardin Classification System. Of the 6 stream channels, two streams were intermittent, three were ephemeral, and one stream exhibited both ephemeral and intermittent flow at different survey locations. Impacts to wetlands and streams will be minimized to the extent practical based on the constructability of the Project and landowner preference. The developer intends to construct the Project under the United States Army Corps of Engineers regulatory thresholds for the appropriate Nationwide Permit (NWP) under Section 404 of the Clean Water Act; applicable NWPs could include 12, 14, 33, or 51. A formal wetland delineation report for the Project has been completed.



Mr. Darrell Nitschke
North Dakota Public Service Commission
August 20, 2019
Page 2

If you have any questions, please do not hesitate to contact me by telephone at (816) 822-4311 or by email at jbailey@burnsmcd.com.

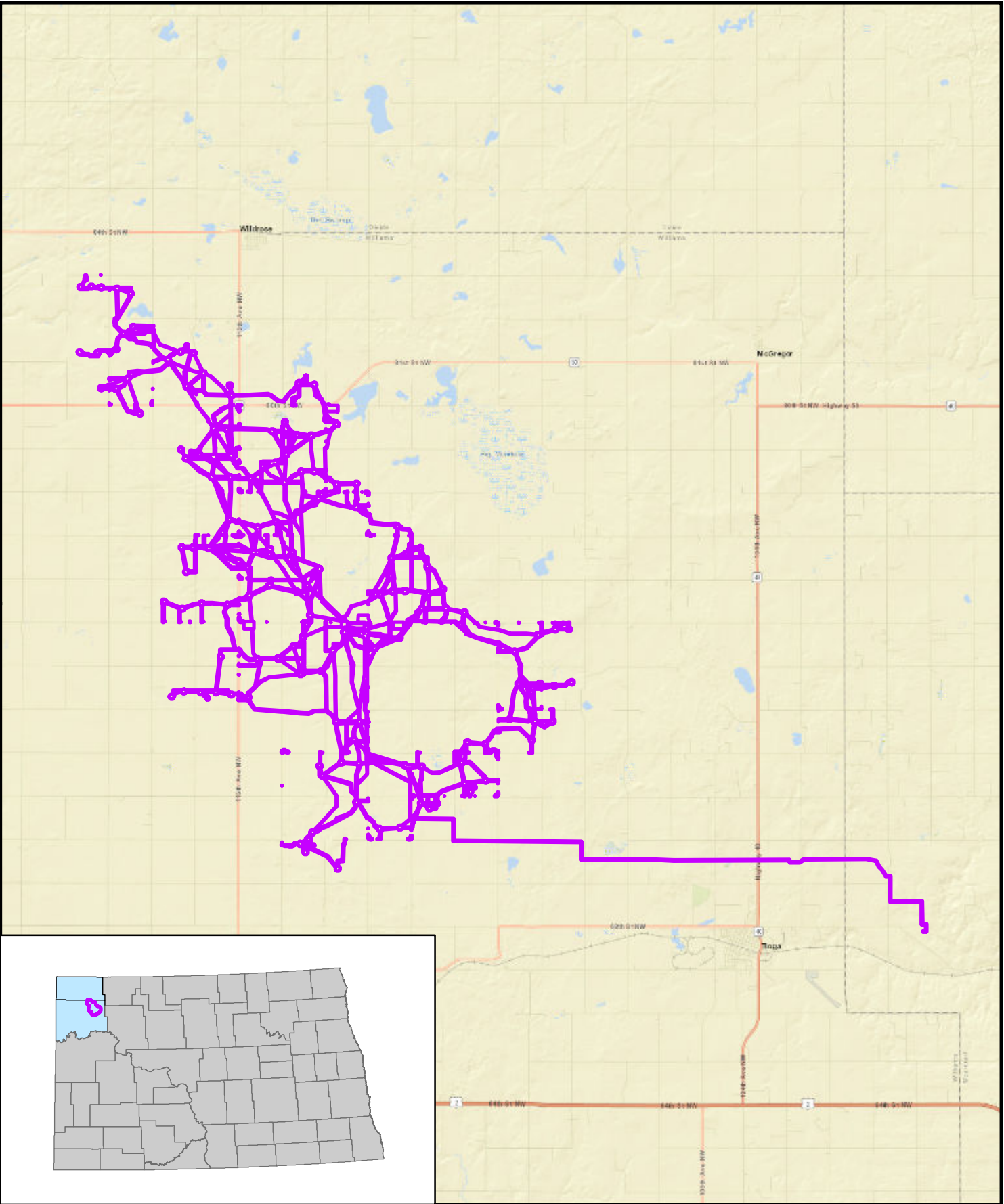
Sincerely,


A handwritten signature in black ink that reads "Justin E. Bailey". The signature is written in a cursive style.

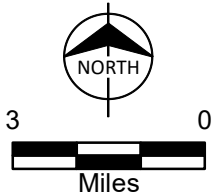
Justin E. Bailey
Project Manager

Enclosures

cc: Jennifer Dean, Aurora Wind
Mollie Smith, Fredrikson & Byron

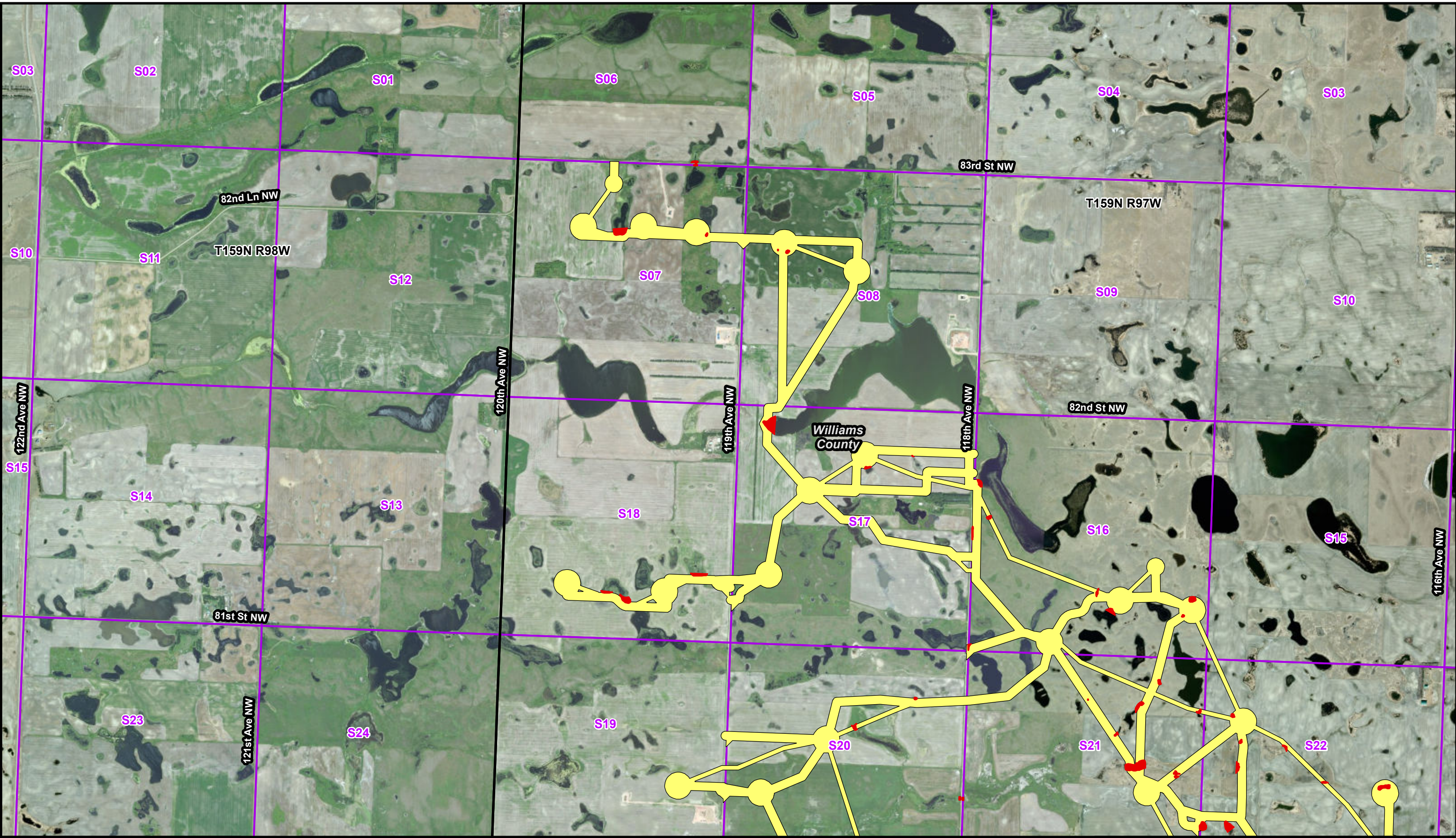


 Survey Corridor



Aurora Wind Farm
Overview Map
Aurora Wind Project, LLC
Mountrail and Williams Co., ND

Path: \\bnmcdfs\Clients\ENR\104200_Aurora\Studies\Geospatial\DataFiles\ArcDocs\Wetlands\104200_Aurora_TechnicalMemo_Figure.mxd brsalupo 8/20/2019
COPYRIGHT © 2019 BURNS & McDONNELL ENGINEERING COMPANY, INC.
Service Layer Credits: Source: Esri, DigitalGlobe, GeoEye, Earthstar Geographics, CNES/Airbus DS, USDA, USGS, AeroGRID, IGN, and the GIS User Community



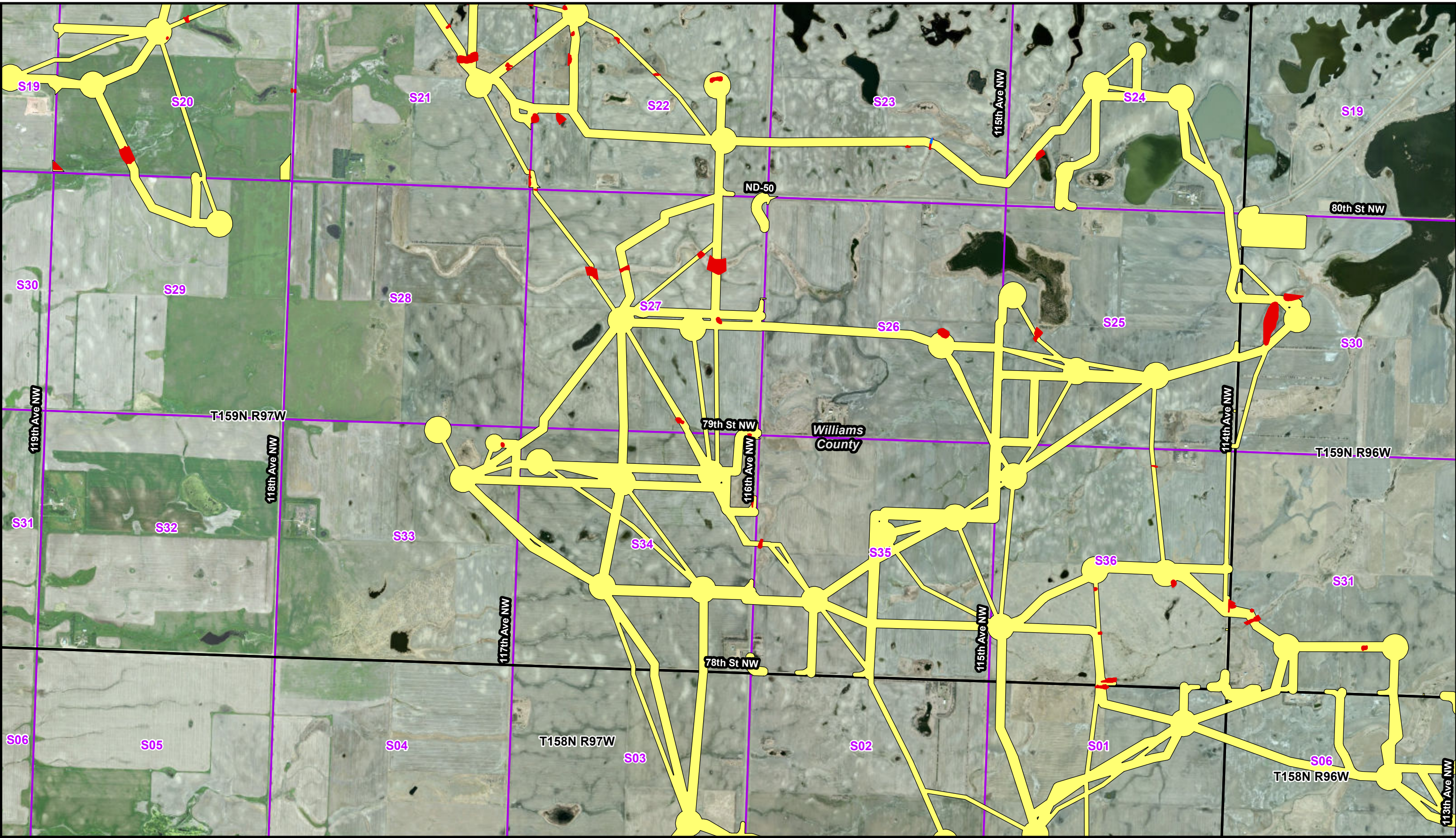
Survey Corridor **Delineated Wetland** **Delineated Stream**

Scale in Feet
2,000 1,000 0 2,000



Location Map of Wetlands and Other Water Resources
Aurora Wind Project
Aurora Wind Project, LLC
Williams & Mountrail Counties, ND
Page 1 of 9

Path: \\bmc\dfs\Clients\ENS\TradeWind\Enr\104200_Aurora\Studies\Geospatial\ArcDocs\Wetlands\104200_Aurora_TechnicalMemo_Figure.mxd brsalupo 8/20/2019
COPYRIGHT © 2019 BURNS & McDONNELL ENGINEERING COMPANY, INC.
Service Layer Credits: Source: Esri, DigitalGlobe, GeoEye, Earthstar Geographics, CNES/Airbus DS, USDA, USGS, AeroGRID, IGN, and the GIS User Community



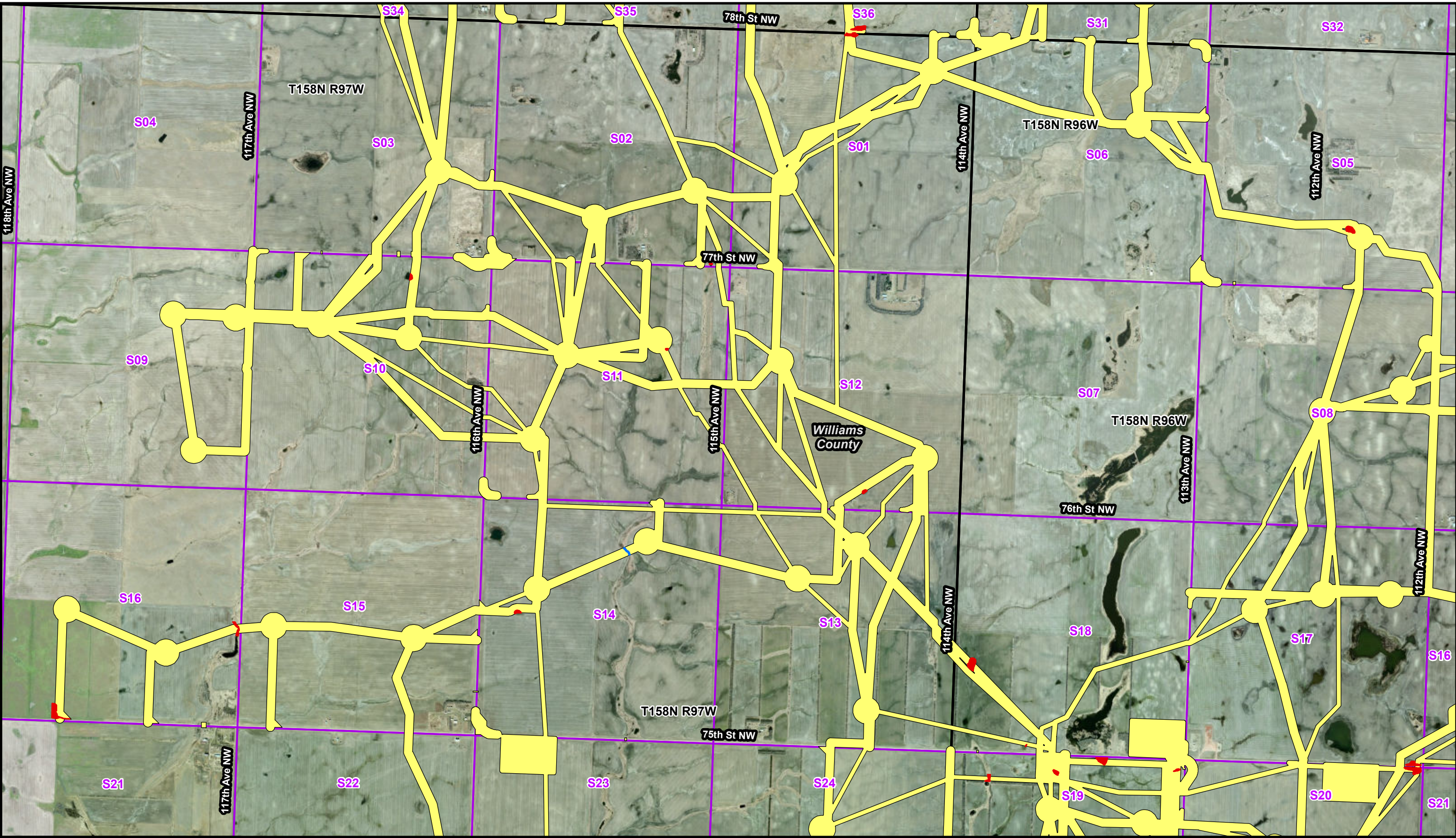
Survey Corridor **Delineated Wetland** **Delineated Stream**

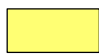


Scale in Feet
2,000 1,000 0 2,000


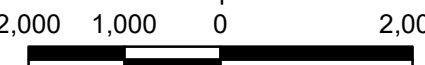


Location Map of Wetlands and Other Water Resources
Aurora Wind Project
Aurora Wind Project, LLC
Williams & Mountrail Counties, ND
Page 2 of 9

Path: \\bmcdfs\clients\ENR\104200_Aurora\Studies\Geospatial\DataFiles\ArcDocs\Wetlands\104200_Aurora_TechnicalMemo_Figure.mxd brsalupo 8/20/2019
COPYRIGHT © 2019 BURNS & McDONNELL ENGINEERING COMPANY, INC.
Service Layer Credits: Source: Esri, DigitalGlobe, GeoEye, Earthstar Geographics, CNES/Airbus DS, USDA, USGS, AeroGRID, IGN, and the GIS User Community



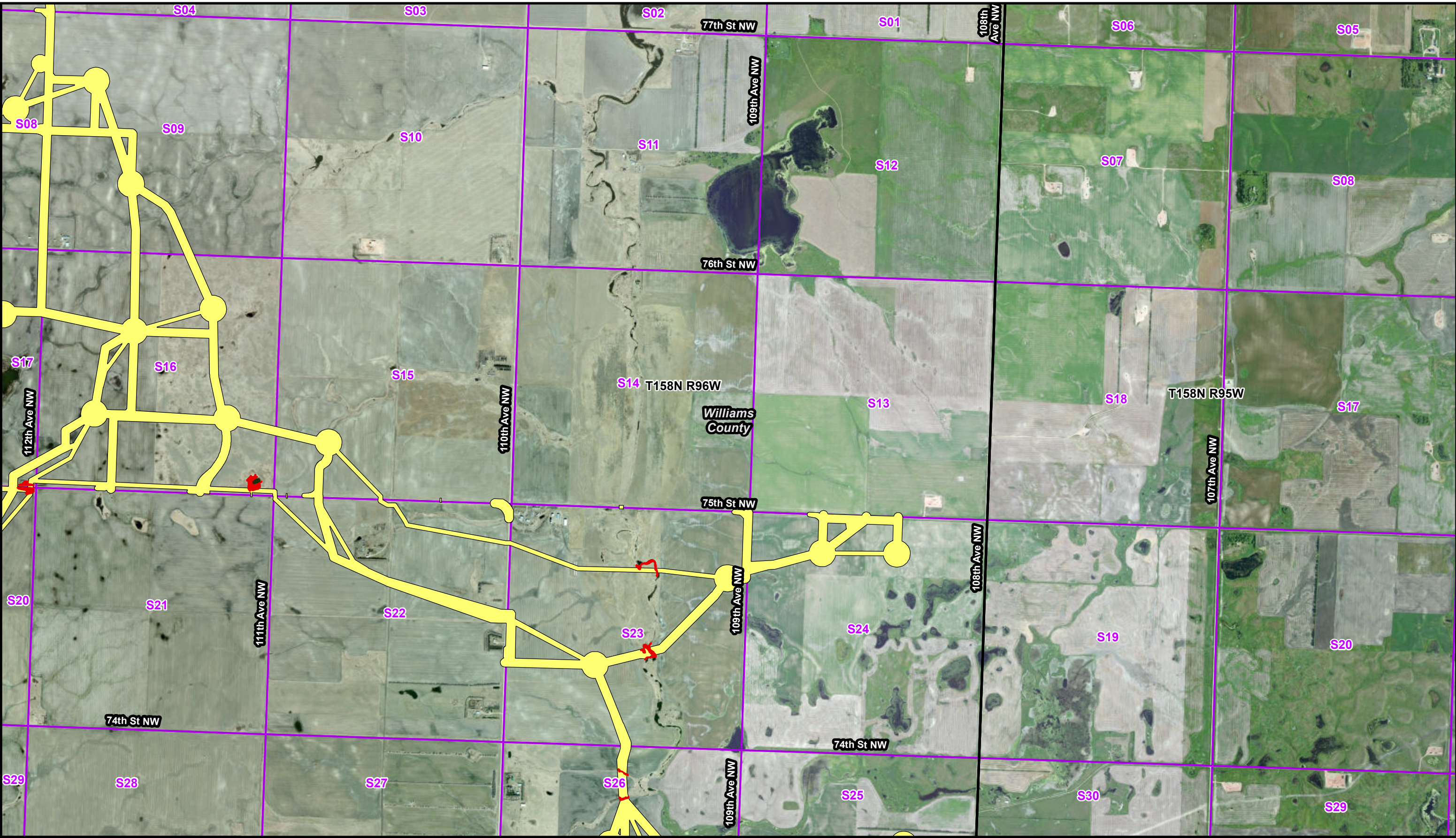
 Survey Corridor  Delineated Wetland  Delineated Stream

 NORTH
 2,000 1,000 0 2,000
Scale in Feet



Location Map of Wetlands and Other Water Resources
Aurora Wind Project
Aurora Wind Project, LLC
Williams & Mountrail Counties, ND
Page 3 of 9

Path: \\bmcdfs\clients\Enr\104200_Aurora\Studies\Geospatial\DataFiles\ArcDocs\Wetlands\104200_Aurora_TechnicalMemo_Figure.mxd brsalupo 8/20/2019
COPYRIGHT © 2019 BURNS & McDONNELL ENGINEERING COMPANY, INC.
Service Layer Credits: Source: Esri, DigitalGlobe, GeoEye, Earthstar Geographics, CNES/Airbus DS, USDA, USGS, AeroGRID, IGN, and the GIS User Community



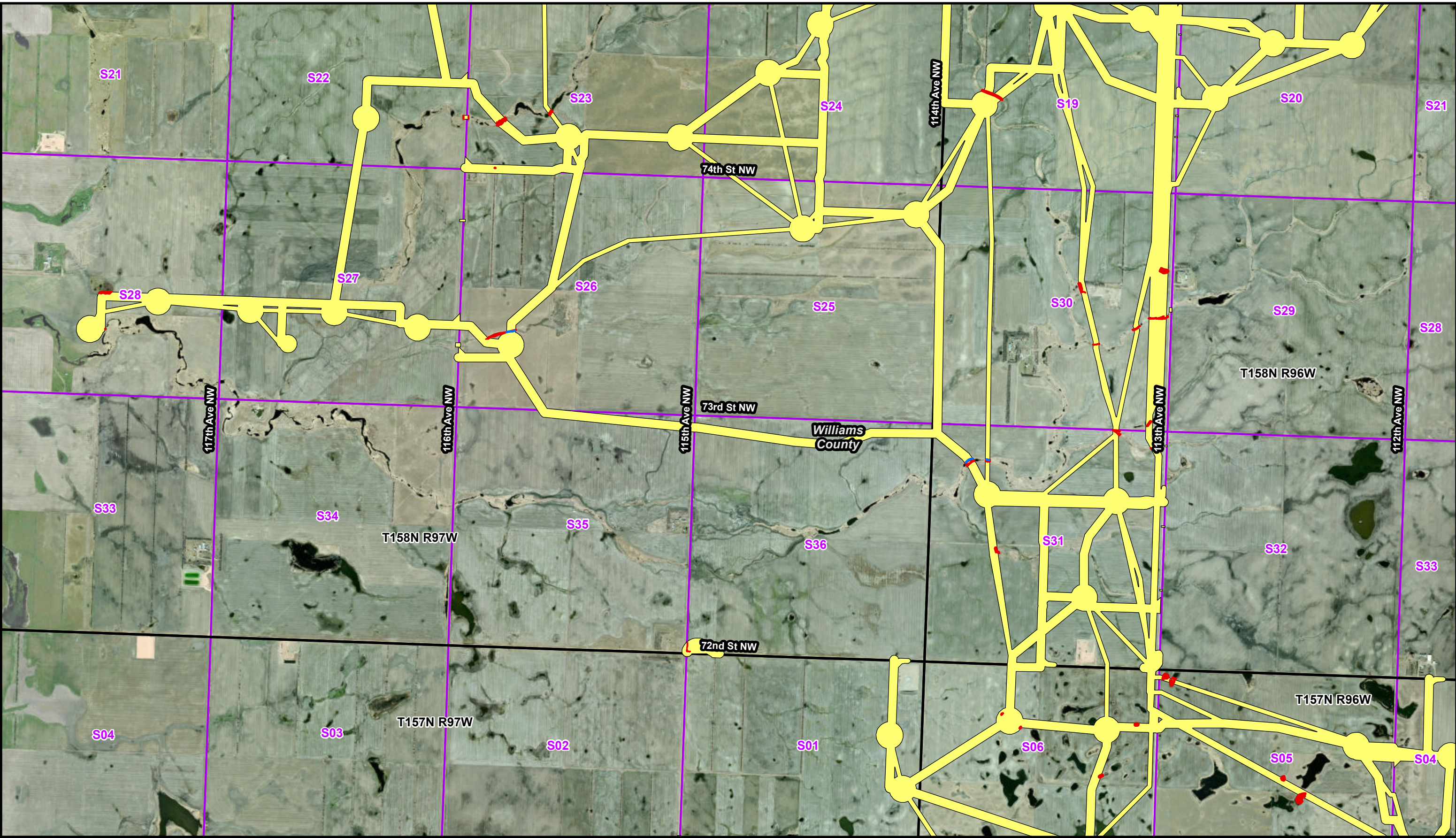
Survey Corridor **Delineated Wetland** **Delineated Stream**

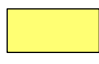
Scale in Feet
2,000 1,000 0 2,000





Location Map of Wetlands and Other Water Resources
Aurora Wind Project
Aurora Wind Project, LLC
Williams & Mountrail Counties, ND
Page 4 of 9

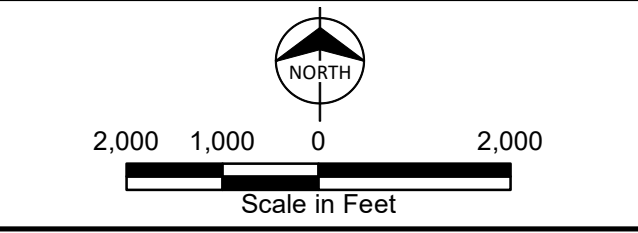
Path: \\bmcdfs\clients\Enr\104200_Aurora\Studies\Geospatial\DataFiles\ArcDocs\Wetlands\104200_Aurora_TechnicalMemo_Figure.mxd brsalupo 8/20/2019
COPYRIGHT © 2019 BURNS & McDONNELL ENGINEERING COMPANY, INC.
Service Layer Credits: Source: Esri, DigitalGlobe, GeoEye, Earthstar Geographics, CNES/Airbus DS, USDA, USGS, AeroGRID, IGN, and the GIS User Community



 Survey Corridor

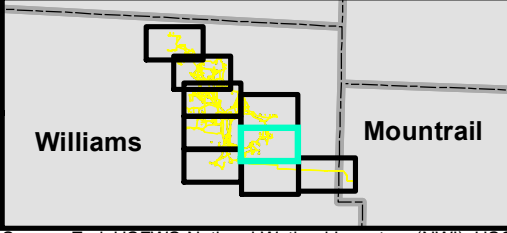
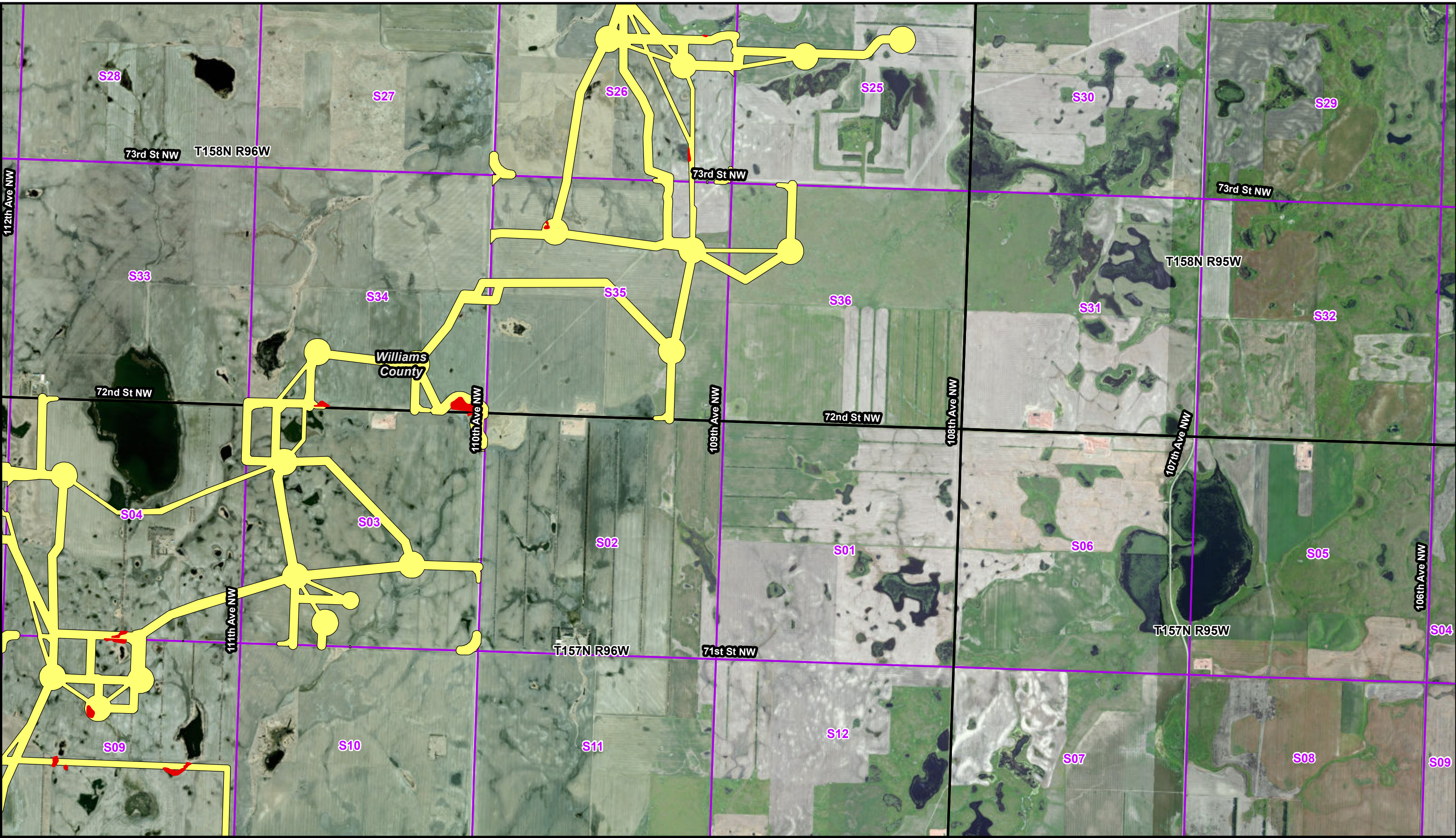
 Delineated Wetland

 Delineated Stream



Location Map of Wetlands and Other Water Resources
Aurora Wind Project
Aurora Wind Project, LLC
Williams & Mountrail Counties, ND
Page 5 of 9

Path: \\bmcdfs\clients\ENR\104200_Aurora\Studies\Geospatial\DataFiles\ArcDocs\Wetlands\104200_Aurora_TechnicalMemo_Figure.mxd brsalupo 8/20/2019
COPYRIGHT © 2019 BURNS & McDONNELL ENGINEERING COMPANY, INC.
Service Layer Credits: Source: Esri, DigitalGlobe, GeoEye, Earthstar Geographics, CNES/Airbus DS, USDA, USGS, AeroGRID, IGN, and the GIS User Community



Survey Corridor **Delineated Wetland** **Delineated Stream**

NORTH

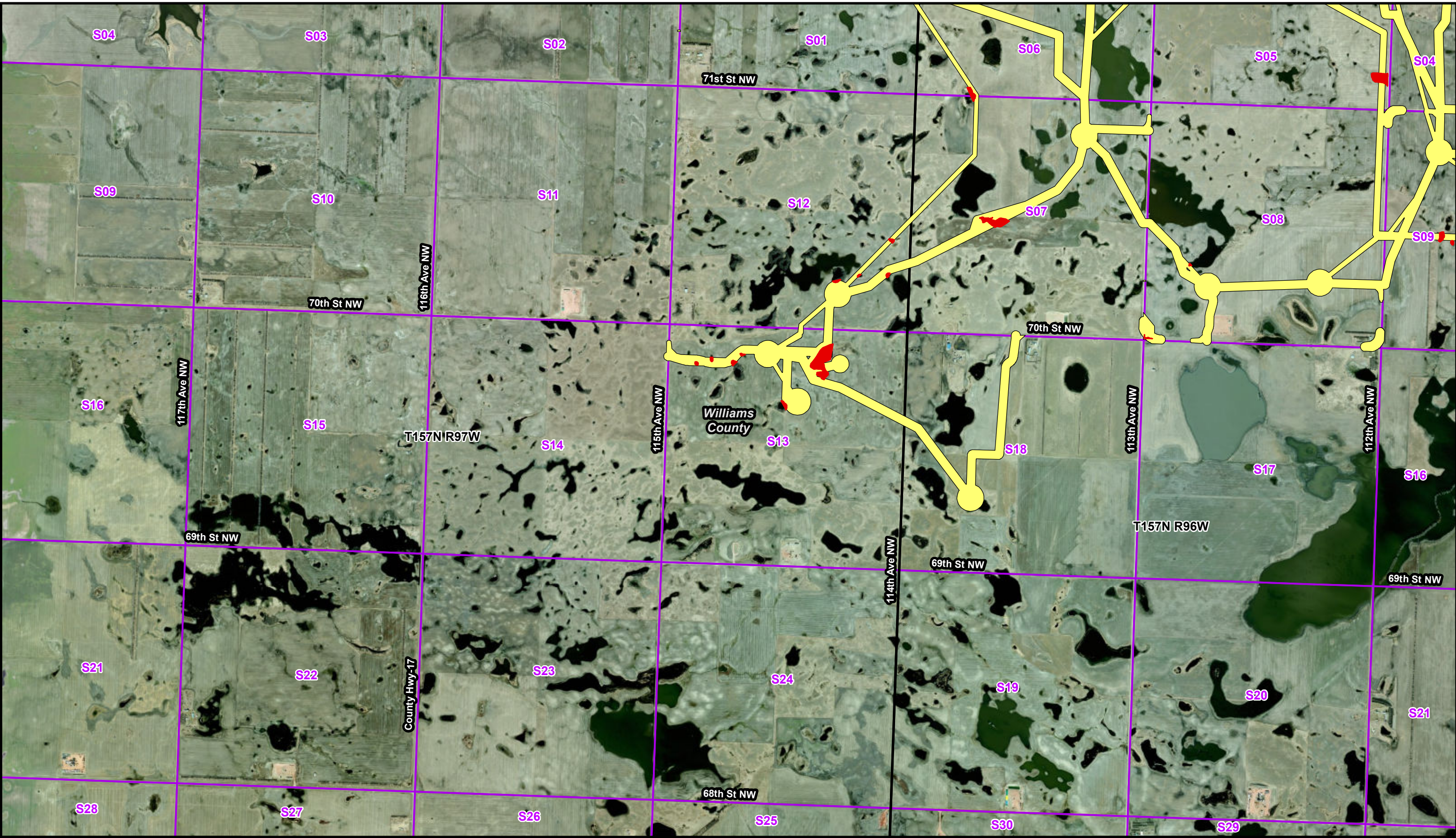
2,000 1,000 0 2,000

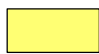


Scale in Feet




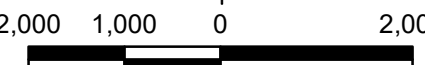
Location Map of Wetlands and Other Water Resources
Aurora Wind Project
Aurora Wind Project, LLC
Williams & Mountrail Counties, ND
Page 6 of 9

Path: \\bnmcdfs\Clients\ENR\104200_Aurora\Studies\Geospatial\DataFiles\ArcDocs\Wetlands\104200_Aurora_TechnicalMemo_Figure.mxd brsalupo 8/20/2019
COPYRIGHT © 2019 BURNS & McDONNELL ENGINEERING COMPANY, INC.
Service Layer Credits: Source: Esri, DigitalGlobe, GeoEye, Earthstar Geographics, CNES/Airbus DS, USDA, USGS, AeroGRID, IGN, and the GIS User Community



 Survey Corridor  Delineated Wetland  Delineated Stream

 NORTH

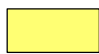


 Scale in Feet




Location Map of Wetlands and Other Water Resources
Aurora Wind Project
Aurora Wind Project, LLC
Williams & Mountrail Counties, ND
Page 7 of 9

Path: \\bmcdfs\clients\ENR\104200_Aurora\Studies\Geospatial\DataFiles\ArcDocs\Wetlands\104200_Aurora_TechnicalMemo_Figure.mxd brsalupo 8/20/2019
COPYRIGHT © 2019 BURNS & McDONNELL ENGINEERING COMPANY, INC.
Service Layer Credits: Source: Esri, DigitalGlobe, GeoEye, Earthstar Geographics, CNES/Airbus DS, USDA, USGS, AeroGRID, IGN, and the GIS User Community



 Survey Corridor  Delineated Wetland  Delineated Stream

 NORTH

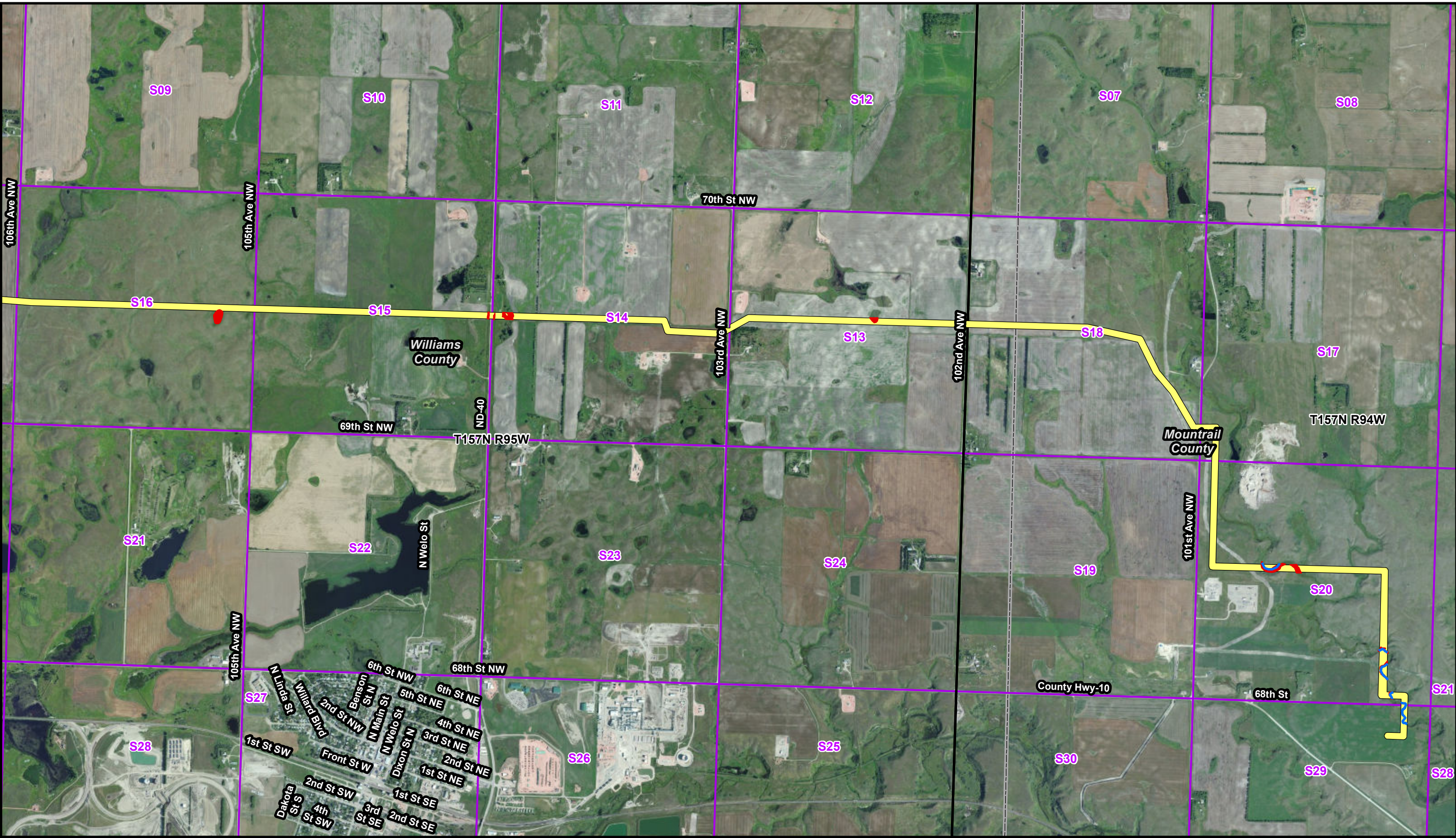
2,000 1,000 0 2,000

Scale in Feet



Location Map of Wetlands and Other Water Resources
Aurora Wind Project
Aurora Wind Project, LLC
Williams & Mountrail Counties, ND
Page 8 of 9

Path: \\bmcdf\clients\ENR\104200_Aurora\Studies\Geospatial\DataFiles\ArcDocs\Wetlands\104200_Aurora_TechnicalMemo_Figure.mxd brsalupo 8/20/2019
 COPYRIGHT © 2019 BURNS & McDONNELL ENGINEERING COMPANY, INC.
 Service Layer Credits: Source: Esri, DigitalGlobe, GeoEye, Earthstar Geographics, CNES/Airbus DS, USDA, USGS, AeroGRID, IGN, and the GIS User Community



Survey Corridor
 Delineated Wetland
 Delineated Stream

NORTH

2,000 1,000 0 2,000
Scale in Feet



Location Map of Wetlands and
 Other Water Resources
 Aurora Wind Project
 Aurora Wind Project, LLC
 Williams & Mountrail Counties, ND
 Page 9 of 9