



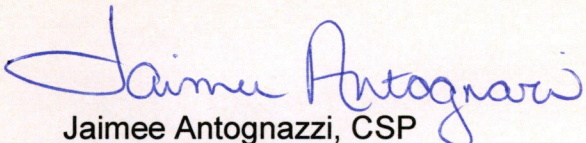
1403 27th STREET NW
PO BOX 98
MANDAN, ND 58554-0098
701-667-1800

November 12, 2020

Executive Secretary
North Dakota Public Service Commission
600 East Boulevard Ave – Dept. 408
Bismarck, ND 58505-0480

Please find enclosed two hardcopies of the construction inspection for PU-18-352. If you have questions, please contact Jaimee Antognazzi at 701-667-1800.

Sincerely,



Jaimee Antognazzi, CSP
Operations Manager

Enclosures: Construction Inspection PU-18-352 (2 hardcopies)

170 **PU-18-352** Filed: 11/12/2020 Pages: 5
Construction Inspection Report

Keitu Engineers & Consultants, Inc.

Site/Project Location: Aurora Wind Farm

Date of Inspection: 21 October 2020

Keitu staff visited the Aurora Wind Turbine project for a construction inspection. Inspection of construction sites focused on (1) confirming surface disturbance/work occurring within ND PSC-approved work corridor and/or route; (2) topsoil segregation occurring; (3) vegetation removal consistent with tree & scrub mitigation plan; and (4) storm water runoff and sediment control.

Observed Work / Weather Conditions

Visit occurred between 11:30 a.m. to 1:30 p.m. The weather was partly cloudy, temperature at 25°F, winds at 5-10 mph out of the northeast and no precipitation.

The wind farm project has been underway since fall of 2020. At the time of the inspection, several turbine pad sites were completed and operating and the remaining turbines were currently under construction. Turbine construction is expected to be completed in November or December of 2020.

Photo GPS points were taken during the inspection as a location reference for turbine site locations. Turbine sites that were completed and currently under construction were visited. All turbine sites visited were located outside the determined exclusionary zones.

Top Soil Management / Condition / Erosion Control / Stormwater Management

During the inspection, stripped topsoil was noted along string roads and at turbine sites. Topsoil was appropriately segregated from the subsoil with it being piled along the opposite side of string roads and in separate piles at turbine sites. Erosion control and stormwater management BMPs were in good condition and working effectively; although the ground was frozen at the time of the inspection.

Vegetation Condition

There were locations where trees were removed from single row shelterbelts for string roads and collection lines to turbine sites. The number of trees removed was minimal. Enel Green Power will follow the tree and shrub mitigation plan submitted as part of their Application for Certificate of Site Compatibility. In several locations, string roads to turbine sites were constructed through agricultural fields currently in crop production.

Deficiencies

No deficiencies were noted during the construction inspection.

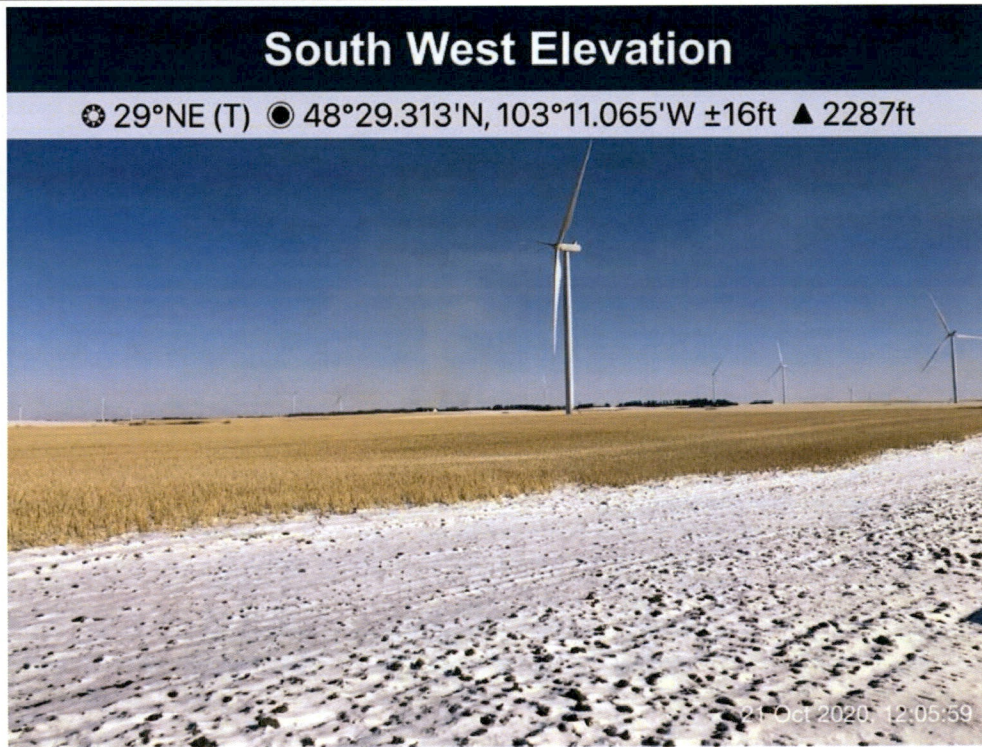
Actions Taken/To Be Taken

Reclamation and revegetation seeding will be completed in the spring of 2021 after the ground thaws. Topsoil piles will be used to revegetate areas not used for permanent roads or turbine pads.

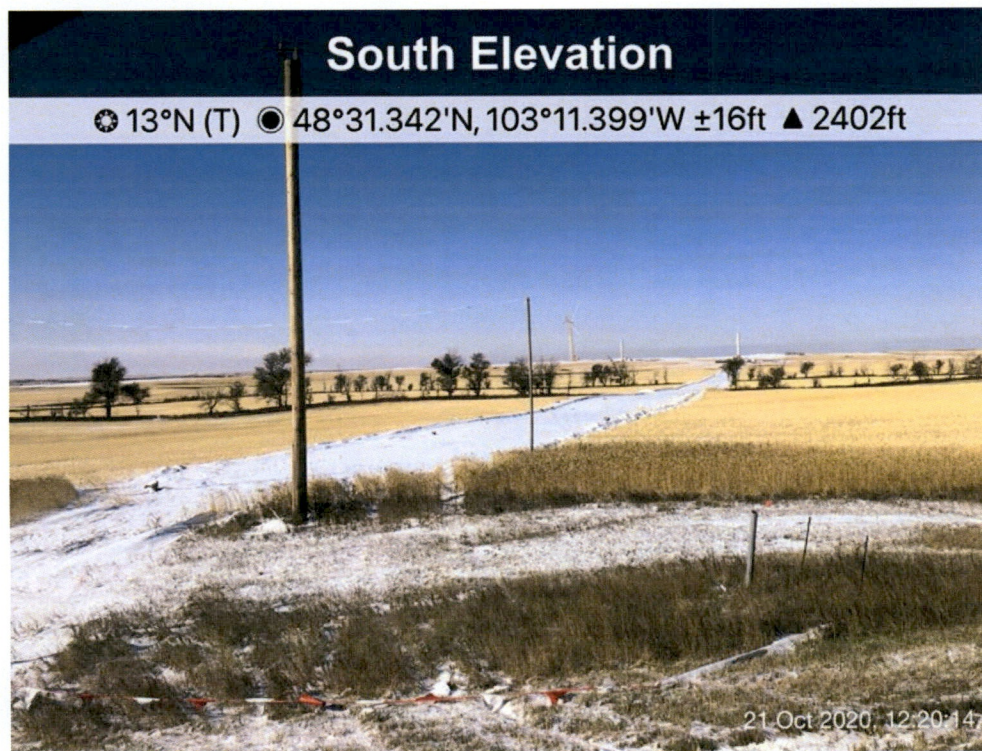
Keitu Inspector: ZAP

Inspection Report Submitted: 12 November 2020

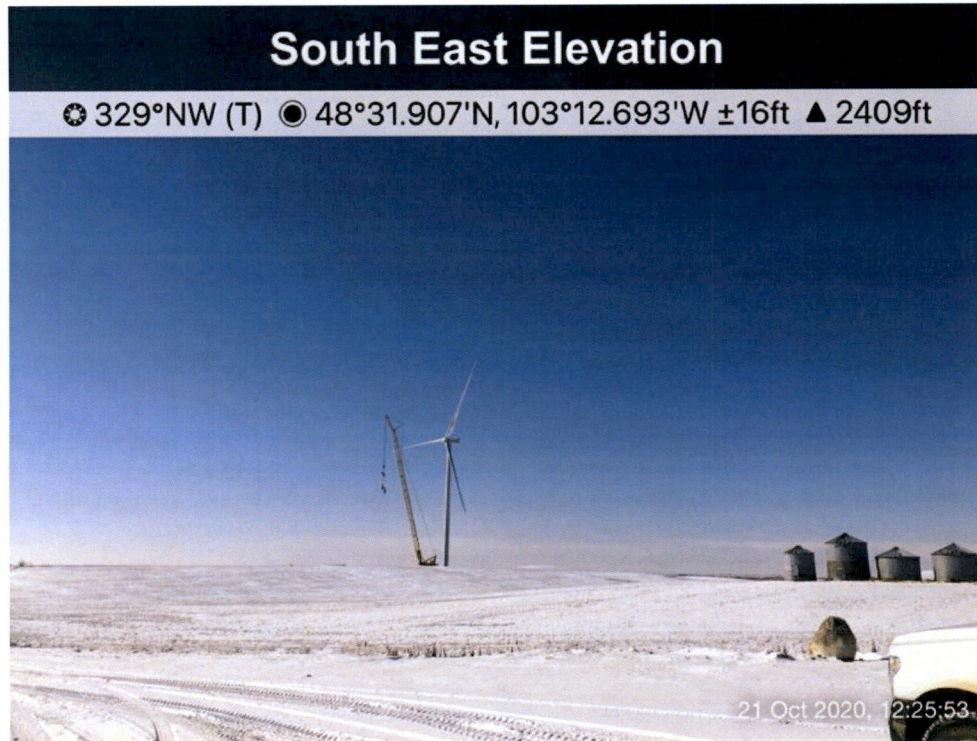
Report Photo #1 "Overview of Wind Turbines"



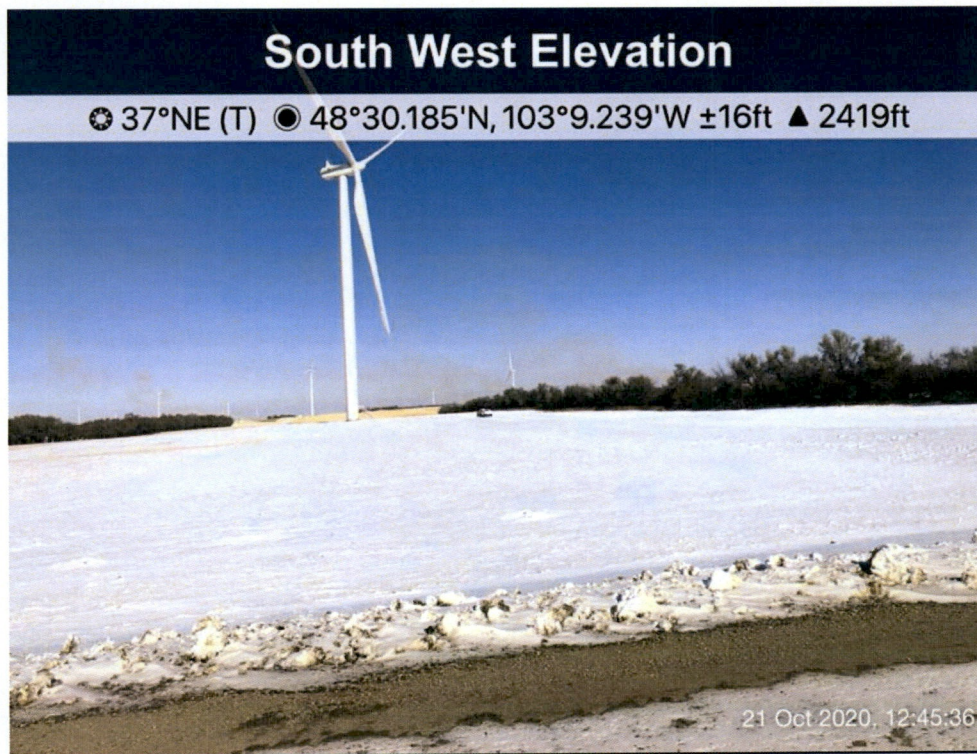
Report Photo #2 "Collection Line and Removed Trees"



Report Photo #3 "Wind Turbine Nearing Completion"



Report Photo #4 "Overview of Completed Turbines"



Site Location Map

