

- Milepost
- Mainline Valve
- ▲ Launcher/Receiver
- Centerline: Co-located
- Centerline: Not Co-located
- Retired Centerline
- ▭ Retired Project Corridor
- ▭ Project Corridor
- ▭ Project Corridor Addition
- ▭ 1-mile Study Area
- ▭ Section Boundary
- Antenna Structure
- Microwave Station
- ▭ Field Surveys Not Complete
- ▭ NDDTL - School Trust Land
- ▭ NDDTL - Mineral Trust Land
- NHD Flowline
- ▭ Field Delineated Waterbody
- ▭ Field Delineated Wetland
- ▭ NWI Wetland
- ▭ Wellhead Community Protection Area
- ▭ Wellhead Non-Community Protection Area
- ▭ Surficial Aquifer

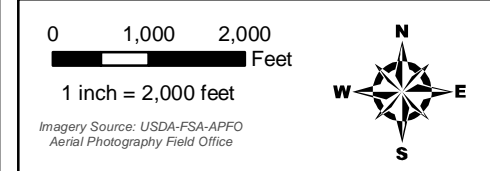
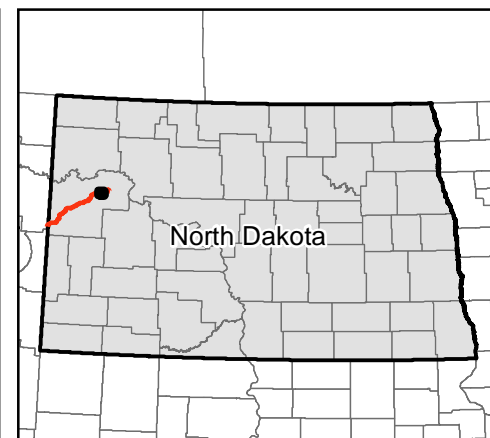
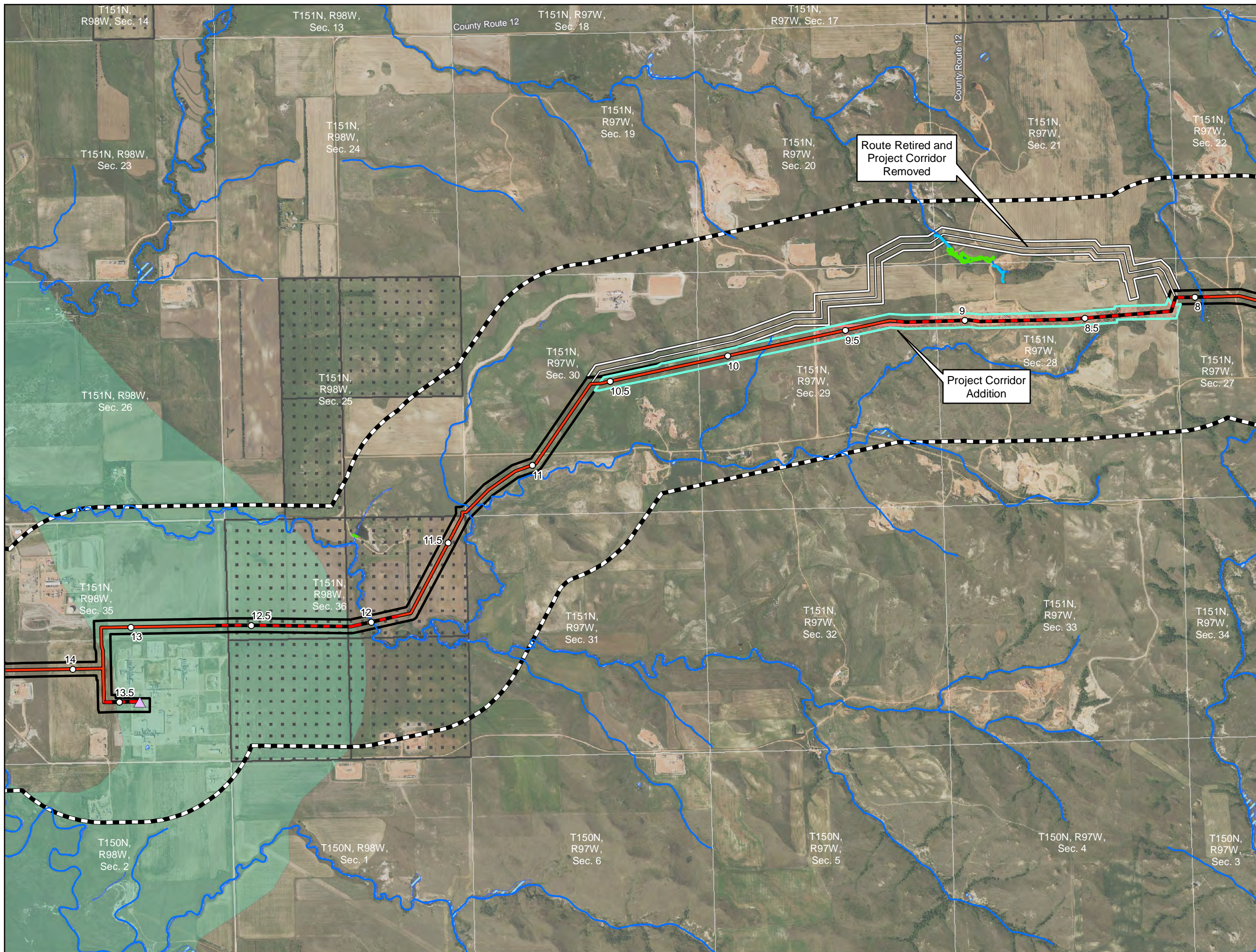
Exhibit B.4
ONEOK Bakken Pipeline, L.L.C.
Demicks Lake Pipeline Project

Selection Criteria (Other) Maps

Page 1 of 14
 McKenzie County, ND

45 PU-18-399 Filed 04/03/2019 Pages: 14
 Exhibit 5 - Updated Application Exhibit B.4 Selection Criteria Map Book
 ONEOK Bakken Pipeline, L.L.C.

Date: (3/1/2019) Source: Z:\Clients\W\ONEOK\Demicks_Lake_Pipeline\Permitting\PS\201901\Figures\DL_PSC_Supplemental_Other_Criteria_Map_Book.mxd



- Milepost
- Mainline Valve
- ▲ Launcher/Receiver
- Centerline: Co-located
- Centerline: Not Co-located
- Retired Centerline
- Retired Project Corridor
- Project Corridor
- Project Corridor Addition
- 1-mile Study Area
- Section Boundary
- Antenna Structure
- Microwave Station
- Field Surveys Not Complete
- NDDTL - School Trust Land
- NDDTL - Mineral Trust Land
- NHD Flowline
- Field Delineated Waterbody
- Field Delineated Wetland
- NWI Wetland
- Wellhead Community Protection Area
- Wellhead Non-Community Protection Area
- Surficial Aquifer

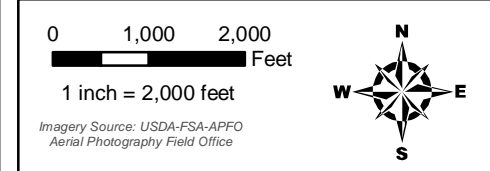
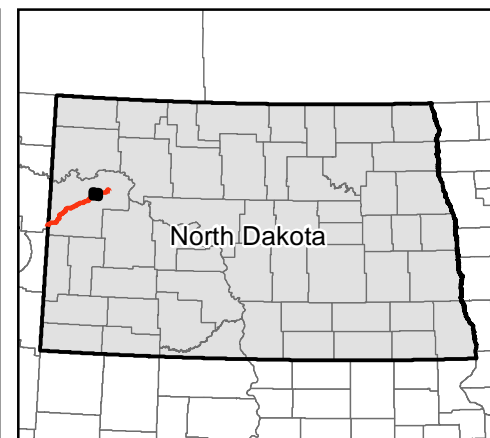
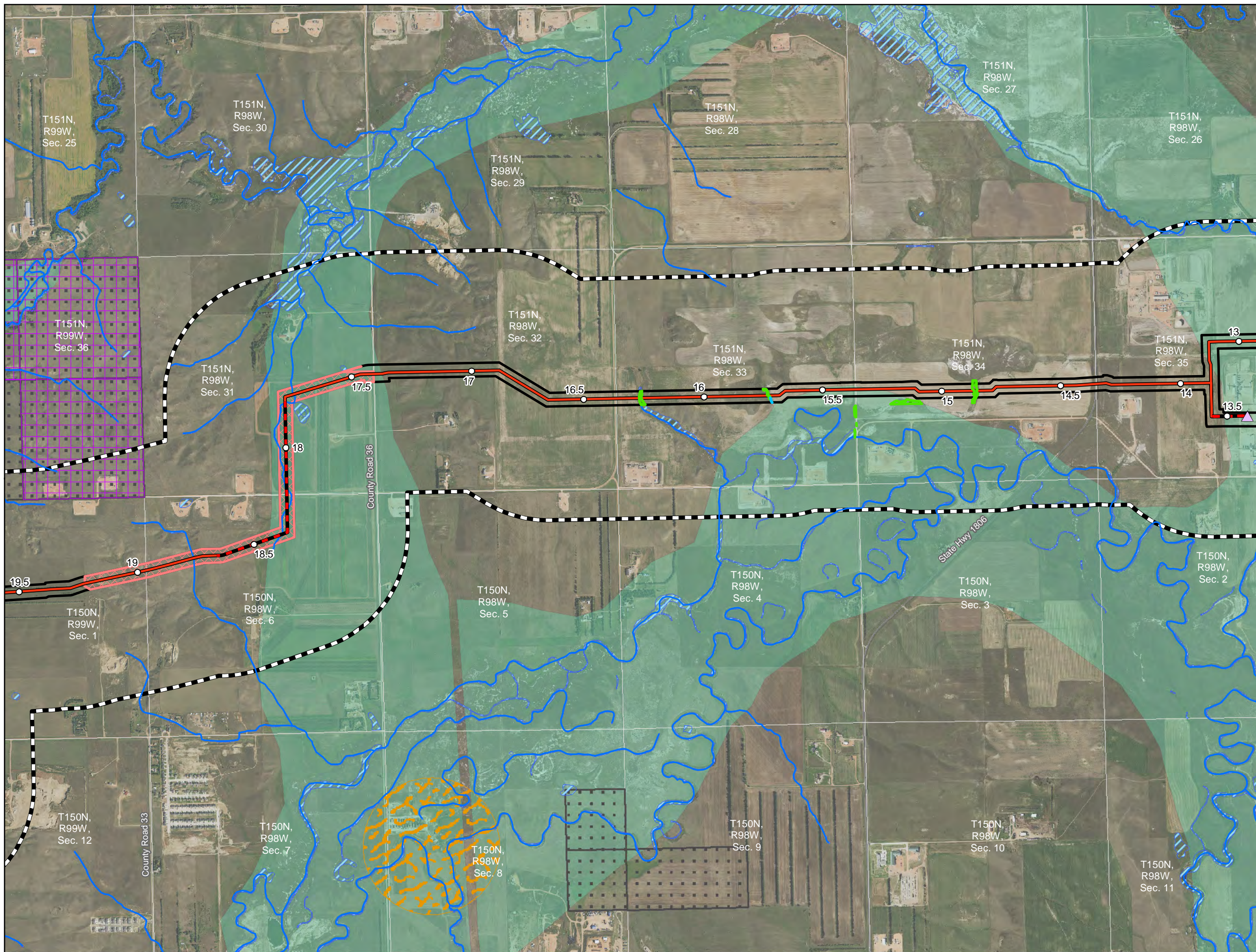
Exhibit B.4
ONEOK Bakken Pipeline, L.L.C.
Demicks Lake Pipeline Project

Selection Criteria (Other) Maps

Page 2 of 14
 McKenzie County, ND



Source: Z:\Clients\W\ONEOK\Demicks_Lake_Pipeline\Permitting\PS\201901\Figures\ULP_PSC_Supplemental_Other_Criteria_Map_Book.mxd



Imagery Source: USDA-FSA-APFO
Aerial Photography Field Office

- Milepost
- Mainline Valve
- ▲ Launcher/Receiver
- Centerline: Co-located
- Centerline: Not Co-located
- Retired Centerline
- ▭ Retired Project Corridor
- ▭ Project Corridor
- ▭ Project Corridor Addition
- ▭ 1-mile Study Area
- ▭ Section Boundary
- Antenna Structure
- Microwave Station
- ▭ Field Surveys Not Complete
- ▭ NDDTL - School Trust Land
- ▭ NDDTL - Mineral Trust Land
- NHD Flowline
- ▭ Field Delineated Waterbody
- ▭ Field Delineated Wetland
- ▭ NWI Wetland
- ▭ Wellhead Community Protection Area
- ▭ Wellhead Non-Community Protection Area
- ▭ Surficial Aquifer

Exhibit B.4
ONEOK Bakken Pipeline, L.L.C.
Demicks Lake Pipeline Project

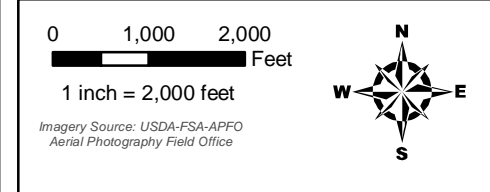
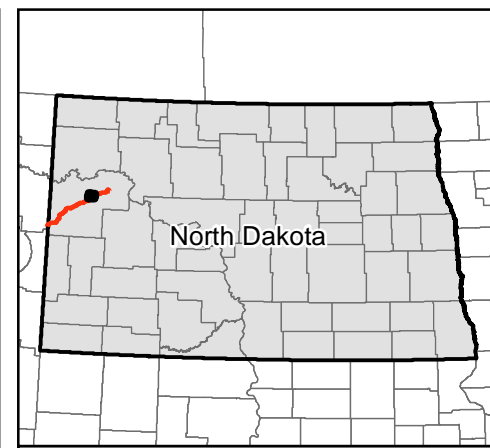
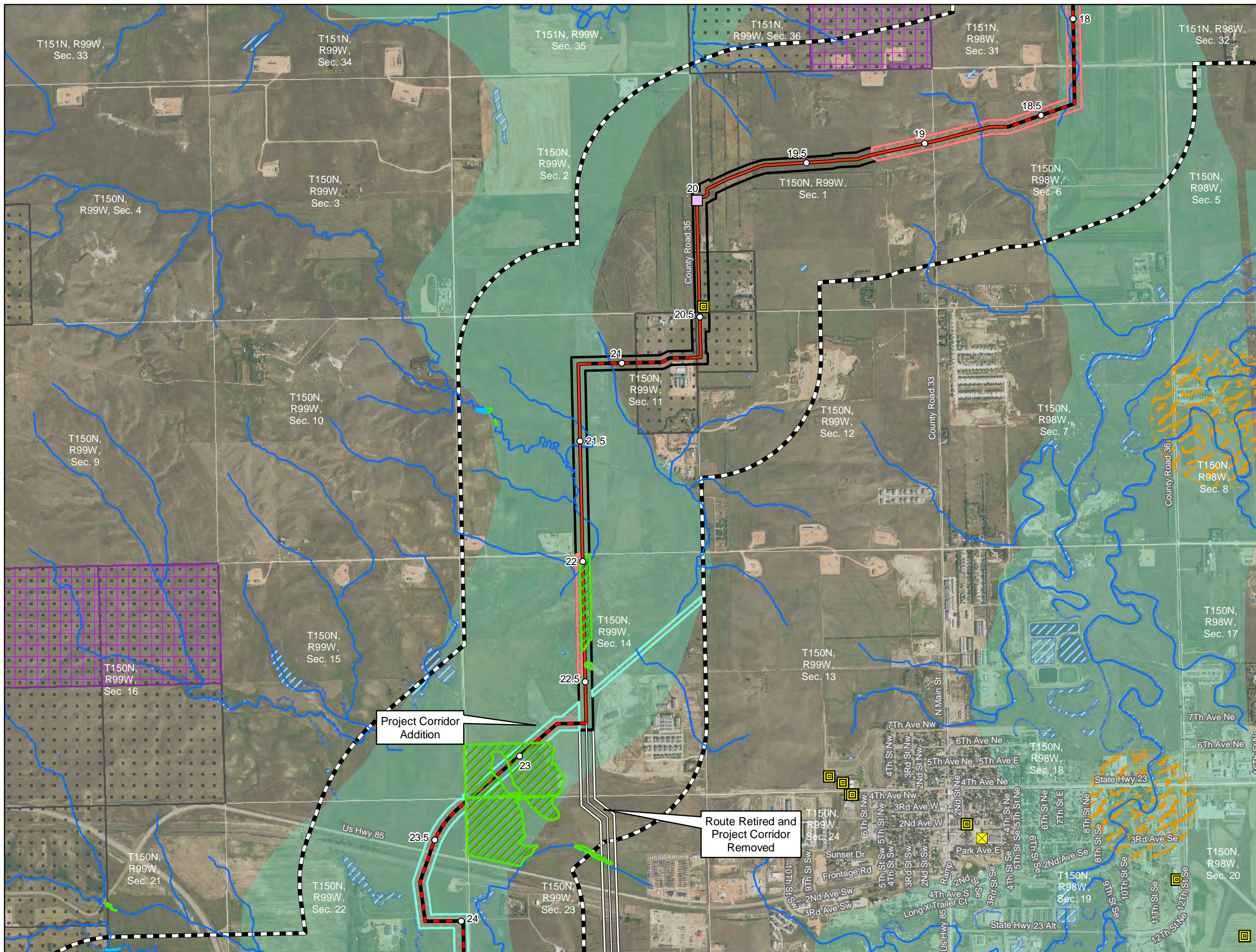
Selection Criteria (Other) Maps

Page 3 of 14

McKenzie County, ND



Date: (3/1/2019) Source: Z:\Clients\W\ONEOK\Demicks_Lake_Pipeline\Permitting\PS\201901\Figures\DLP_PSC_Supplemental_Other_Criteria_Map_Book.mxd



- Imagery Source: USDA-FSA-APFO Aerial Photography Field Office
- Milepost
 - Mainline Valve
 - ▲ Launcher/Receiver
 - Centerline: Co-located
 - Centerline: Not Co-located
 - Retired Centerline
 - ▭ Retired Project Corridor
 - ▭ Project Corridor
 - ▭ Project Corridor Addition
 - ▭ 1-mile Study Area
 - ▭ Section Boundary
 - Antenna Structure
 - Microwave Station
 - ▭ Field Surveys Not Complete
 - ▭ NDDTL - School Trust Land
 - ▭ NDDTL - Mineral Trust Land
 - NHD Flowline
 - ▭ Field Delineated Waterbody
 - ▭ Field Delineated Wetland
 - ▭ NWI Wetland
 - ▭ Wellhead Community Protection Area
 - ▭ Wellhead Non-Community Protection Area
 - ▭ Surficial Aquifer

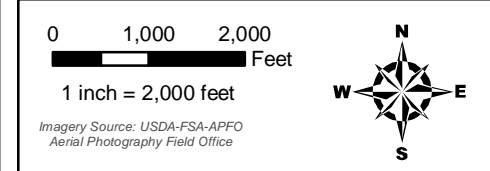
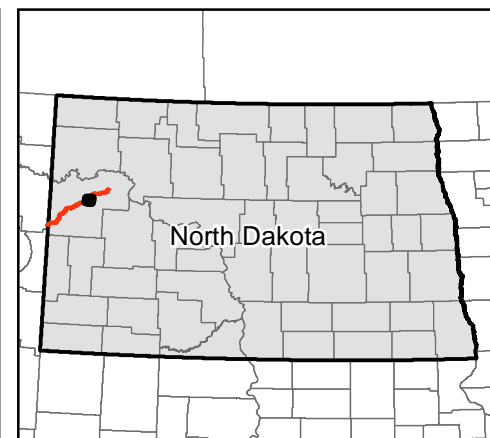
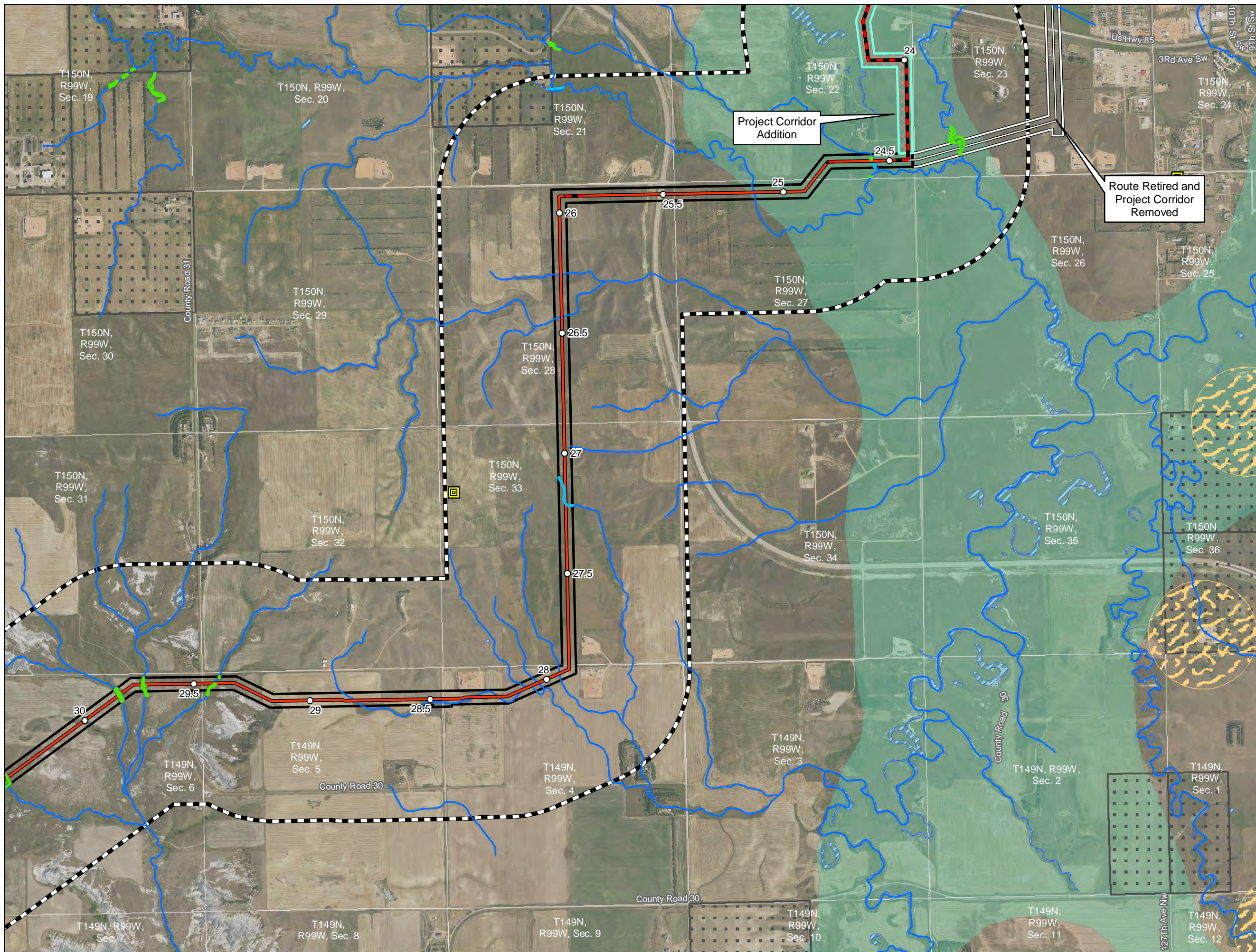
Exhibit B.4
ONEOK Bakken Pipeline, L.L.C.
Demicks Lake Pipeline Project

Selection Criteria (Other) Maps

Page 4 of 14
 McKenzie County, ND



Date: (3/1/2019) Source: Z:\Clients\W\ONEOK\Demicks_Lake_Pipeline\Permitting\PS\201901\Figures\DL_PSC_Supplemental_Other_Map_Book.mxd



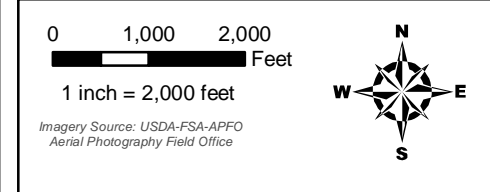
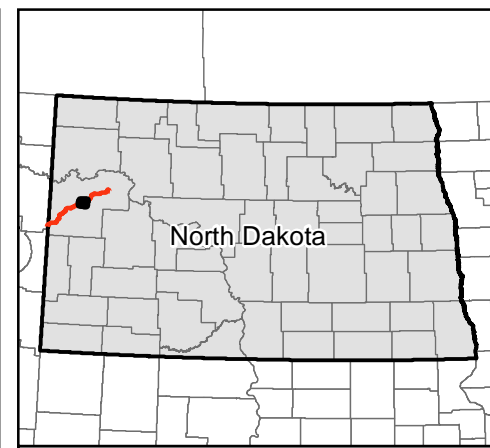
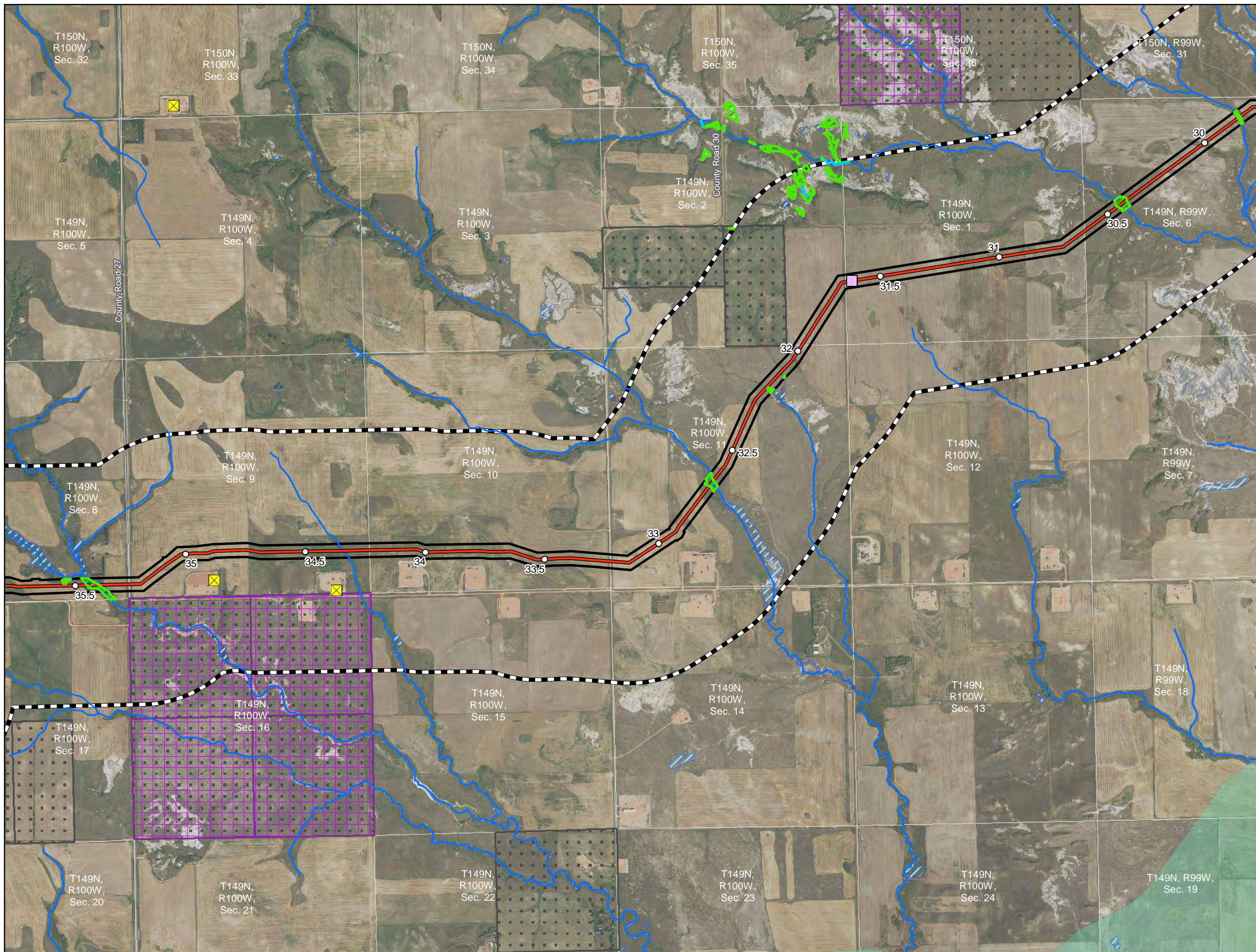
- Milepost
- Mainline Valve
- △ Launcher/Receiver
- Centerline: Co-located
- Centerline: Not Co-located
- Retired Centerline
- ▭ Retired Project Corridor
- ▭ Project Corridor
- ▭ Project Corridor Addition
- ▭ 1-mile Study Area
- ▭ Section Boundary
- Antenna Structure
- Microwave Station
- ▭ Field Surveys Not Complete
- ▭ NDDTL - School Trust Land
- ▭ NDDTL - Mineral Trust Land
- NHD Flowline
- ▭ Field Delineated Waterbody
- ▭ Field Delineated Wetland
- ▭ NWI Wetland
- ▭ Wellhead Community Protection Area
- ▭ Wellhead Non-Community Protection Area
- ▭ Surficial Aquifer

Exhibit B.4
ONEOK Bakken Pipeline, L.L.C.
Demicks Lake Pipeline Project

Selection Criteria (Other) Maps

Page 5 of 14
 McKenzie County, ND

Date: (3/1/2019) Source: Z:\Clients\W\ONEOK\Demicks_Lake_Pipeline\Permitting\PS\201901\Figures\DLF_PSC_Supplemental_Other_Criteria_Map_Book.mxd



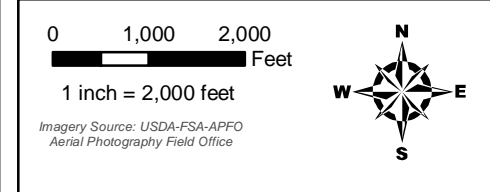
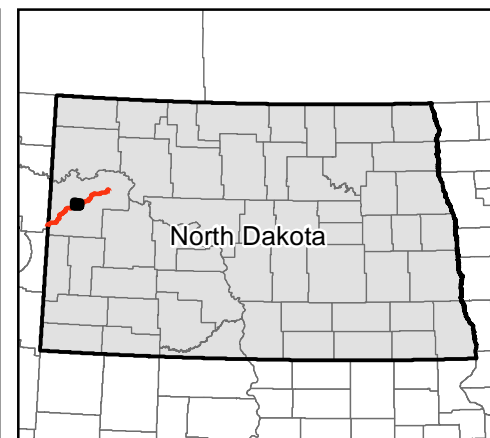
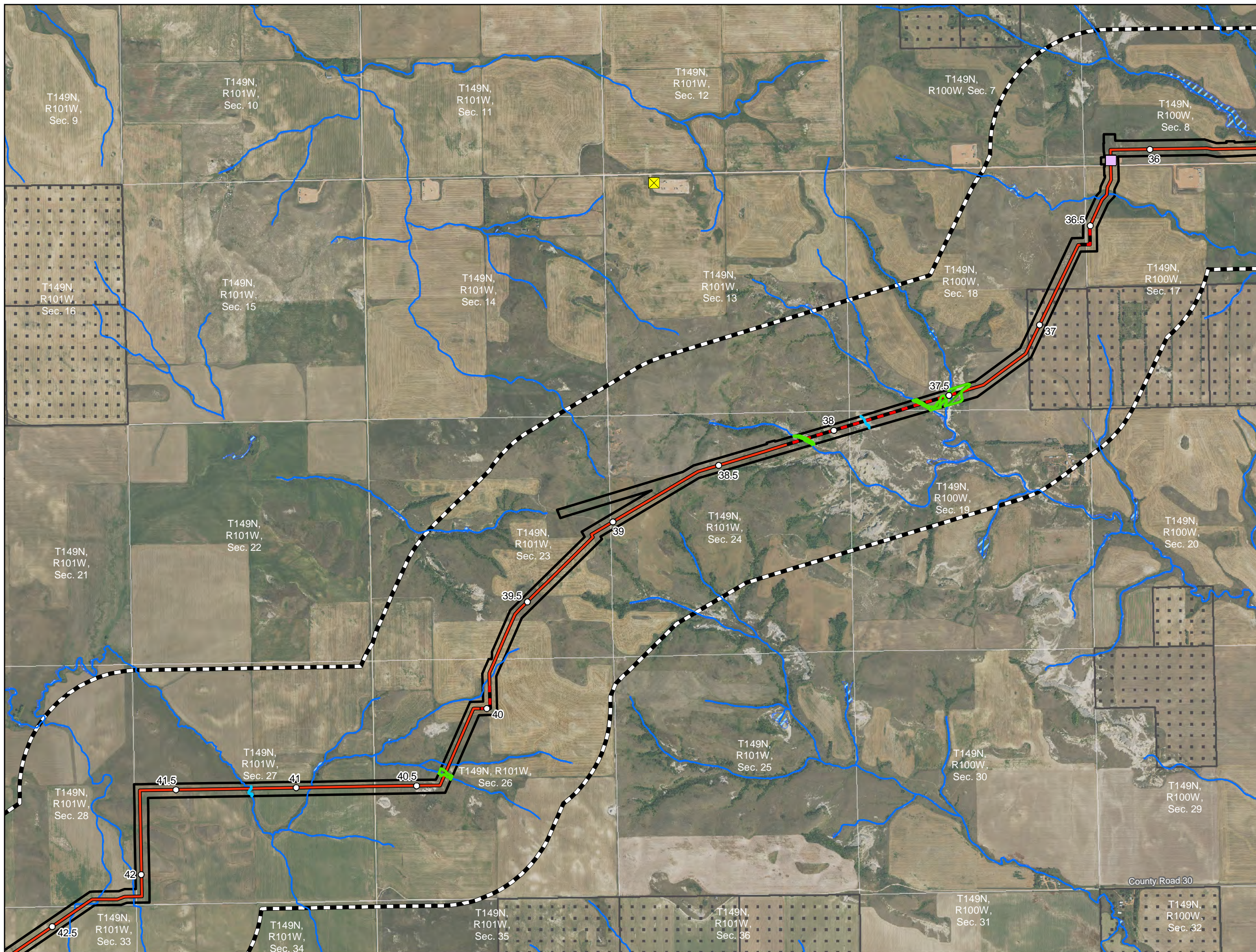
- Milepost
- Mainline Valve
- ▲ Launcher/Receiver
- Centerline: Co-located
- Centerline: Not Co-located
- Retired Centerline
- ▭ Retired Project Corridor
- ▭ Project Corridor
- ▭ Project Corridor Addition
- ▭ 1-mile Study Area
- ▭ Section Boundary
- Antenna Structure
- Microwave Station
- ▭ Field Surveys Not Complete
- ▭ NDDTL - School Trust Land
- ▭ NDDTL - Mineral Trust Land
- NHD Flowline
- ▭ Field Delineated Waterbody
- ▭ Field Delineated Wetland
- ▭ NWI Wetland
- ▭ Wellhead Community Protection Area
- ▭ Wellhead Non-Community Protection Area
- ▭ Surficial Aquifer

Exhibit B.4
ONEOK Bakken Pipeline, L.L.C.
Demicks Lake Pipeline Project

Selection Criteria (Other) Maps

Page 6 of 14
 McKenzie County, ND

Date: (3/1/2019) Source: Z:\Clients\W_Pipeline\Permitting\PC201901\Figures\DLP_PSC_Supplemental_Other_Map_Book.mxd



Imagery Source: USDA-FSA-APFO
Aerial Photography Field Office

- Milepost
- Mainline Valve
- ▲ Launcher/Receiver
- Centerline: Co-located
- Centerline: Not Co-located
- Retired Centerline
- ▭ Retired Project Corridor
- ▭ Project Corridor
- ▭ Project Corridor Addition
- ▭ 1-mile Study Area
- ▭ Section Boundary
- Antenna Structure
- Microwave Station
- Field Surveys Not Complete
- NDDTL - School Trust Land
- NDDTL - Mineral Trust Land
- NHD Flowline
- ▭ Field Delineated Waterbody
- ▭ Field Delineated Wetland
- ▭ NWI Wetland
- ▭ Wellhead Community Protection Area
- ▭ Wellhead Non-Community Protection Area
- ▭ Surficial Aquifer

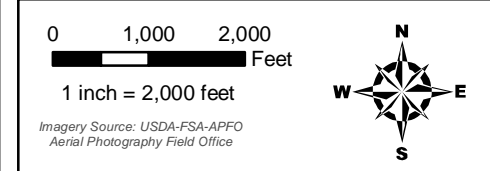
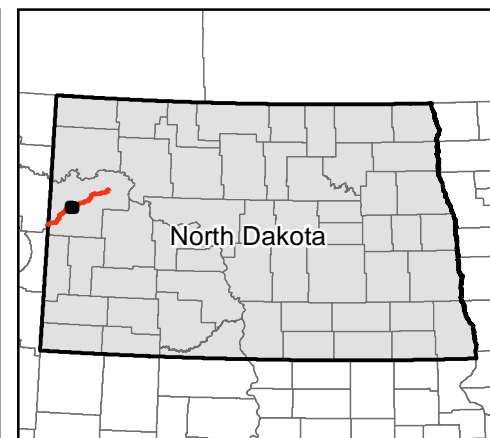
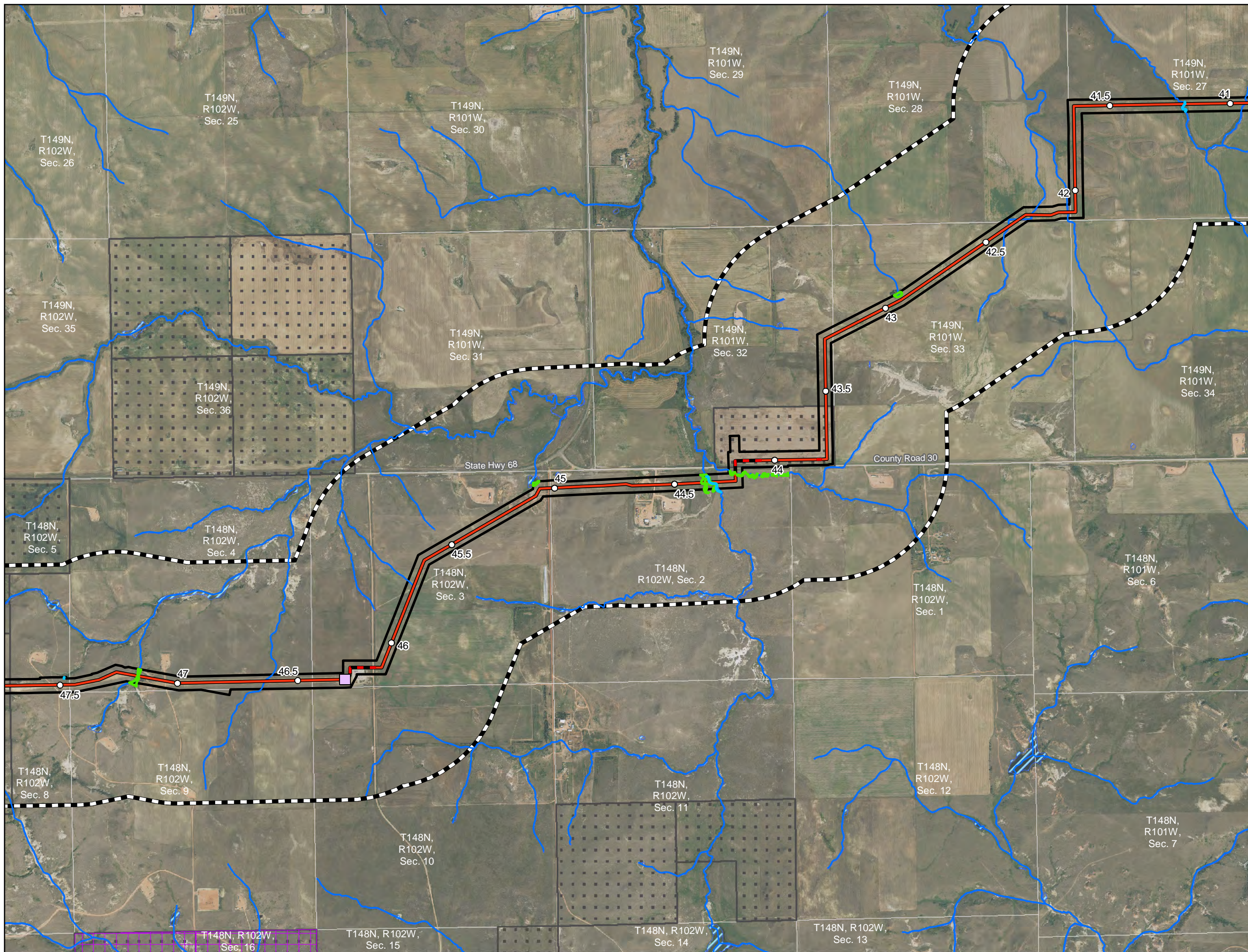
Exhibit B.4
ONEOK Bakken Pipeline, L.L.C.
Demicks Lake Pipeline Project

Selection Criteria (Other) Maps

Page 7 of 14
McKenzie County, ND



Source: Z:\Clients\W\ONEOK\Demicks_Lake_Pipeline\Permitting\PS\201901\Figures\DLF_PSC_Supplemental_Other_Map_Book.mxd



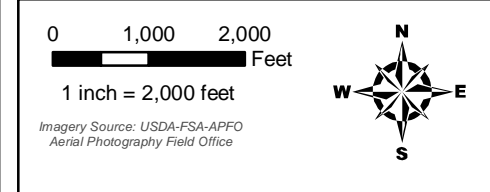
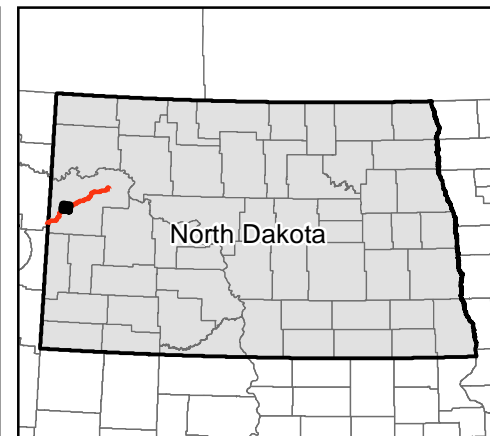
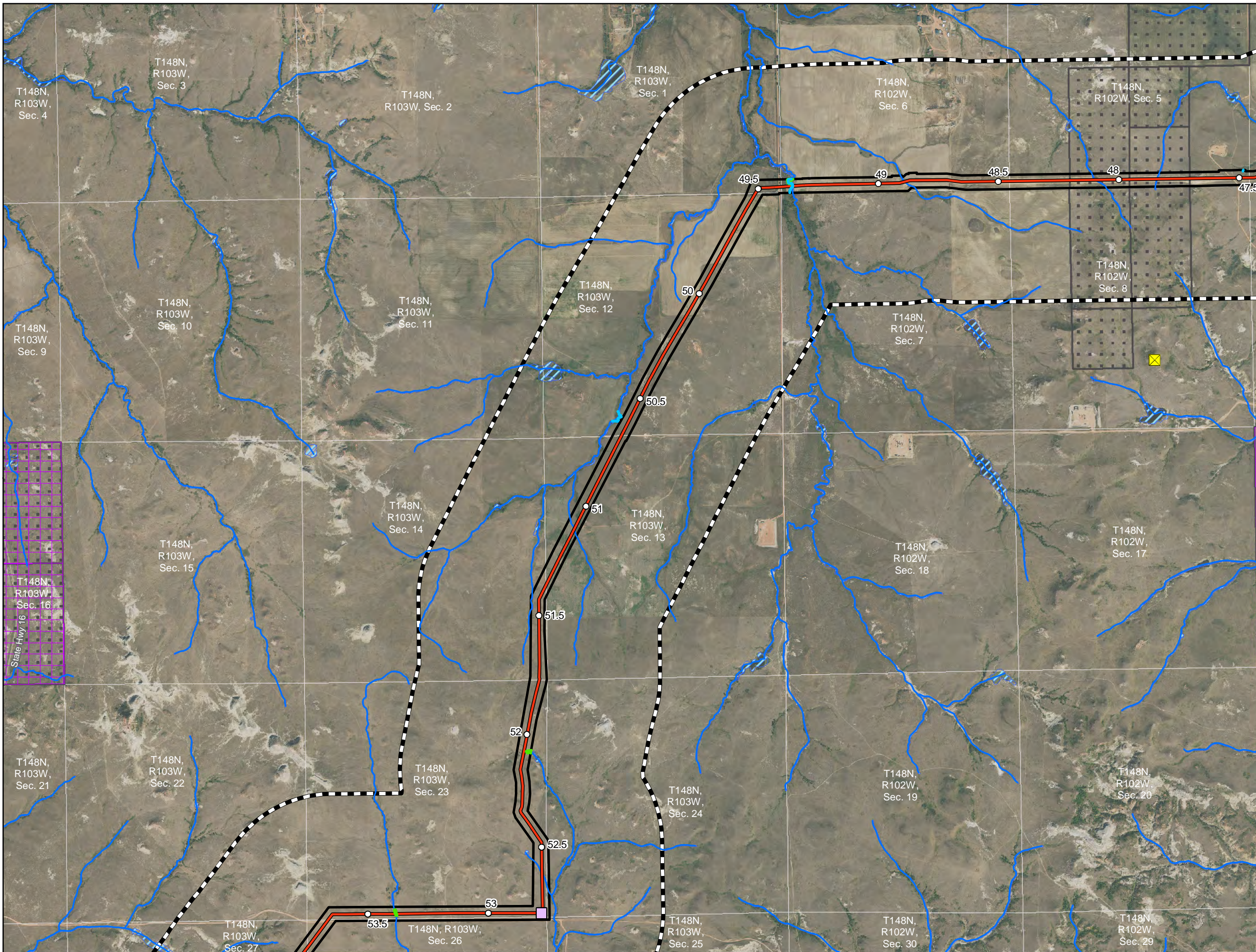
- Milepost
- Mainline Valve
- ▲ Launcher/Receiver
- Centerline: Co-located
- Centerline: Not Co-located
- Retired Centerline
- ▭ Retired Project Corridor
- ▭ Project Corridor
- ▭ Project Corridor Addition
- ▭ 1-mile Study Area
- ▭ Section Boundary
- Antenna Structure
- Microwave Station
- Field Surveys Not Complete
- NDDTL - School Trust Land
- NDDTL - Mineral Trust Land
- NHD Flowline
- ▭ Field Delineated Waterbody
- ▭ Field Delineated Wetland
- ▭ NWI Wetland
- ▭ Wellhead Community Protection Area
- ▭ Wellhead Non-Community Protection Area
- ▭ Surficial Aquifer

Exhibit B.4
ONEOK Bakken Pipeline, L.L.C.
Demicks Lake Pipeline Project

Selection Criteria (Other) Maps

Page 8 of 14
 McKenzie County, ND

Source: Z:\Clients\W\ONEOK\Demicks_Lake_Pipeline\Permitting\PS\201901\Figures\DL_PSC_Supplemental_Other_Criteria_Map_Book.mxd



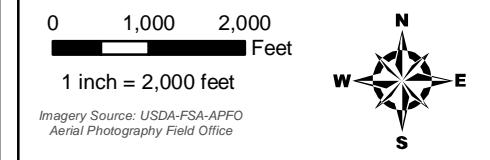
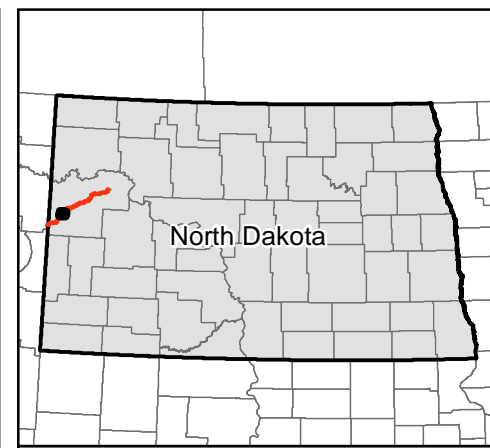
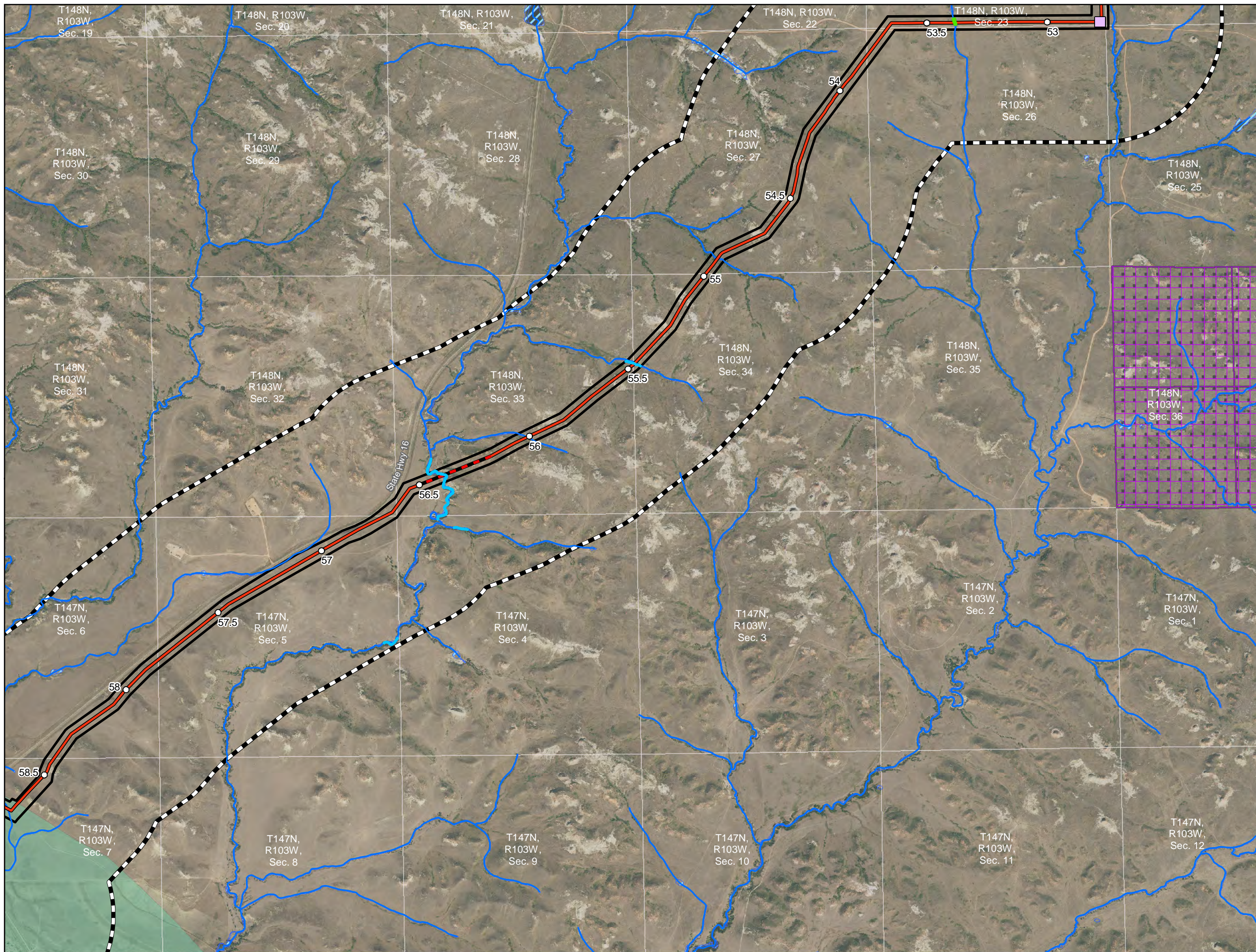
- Milepost
- Mainline Valve
- ▲ Launcher/Receiver
- Centerline: Co-located
- Centerline: Not Co-located
- Retired Centerline
- Retired Project Corridor
- Project Corridor
- Project Corridor Addition
- 1-mile Study Area
- Section Boundary
- Antenna Structure
- Microwave Station
- Field Surveys Not Complete
- NDDTL - School Trust Land
- NDDTL - Mineral Trust Land
- NHD Flowline
- Field Delineated Waterbody
- Field Delineated Wetland
- NWI Wetland
- Wellhead Community Protection Area
- Wellhead Non-Community Protection Area
- Surficial Aquifer

Exhibit B.4
ONEOK Bakken Pipeline, L.L.C.
Demicks Lake Pipeline Project

Selection Criteria (Other) Maps

Page 9 of 14
 McKenzie County, ND

Date: (3/1/2019) Source: Z:\Clients\W\ONEOK\Demicks_Lake_Pipeline\Permitting\PS\201901\Figures\DL_PSC_Supplemental_Other_Criteria_Map_Book.mxd



- Imagery Source: USDA-FSA-APFO
Aerial Photography Field Office
- Milepost
 - Mainline Valve
 - Launcher/Receiver
 - Centerline: Co-located
 - Centerline: Not Co-located
 - Retired Centerline
 - Retired Project Corridor
 - Project Corridor
 - Project Corridor Addition
 - 1-mile Study Area
 - Section Boundary
 - Antenna Structure
 - Microwave Station
 - Field Surveys Not Complete
 - NDDTL - School Trust Land
 - NDDTL - Mineral Trust Land
 - NHD Flowline
 - Field Delineated Waterbody
 - Field Delineated Wetland
 - NWI Wetland
 - Wellhead Community Protection Area
 - Wellhead Non-Community Protection Area
 - Surficial Aquifer

Exhibit B.4
ONEOK Bakken Pipeline, L.L.C.
Demicks Lake Pipeline Project

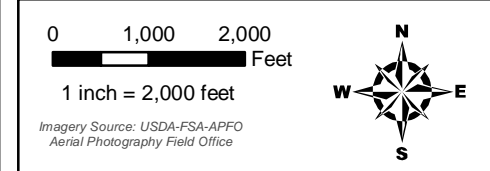
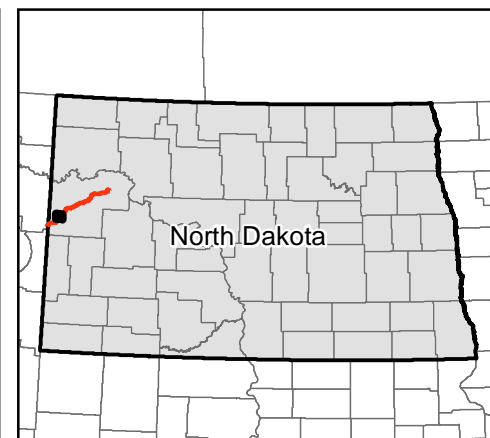
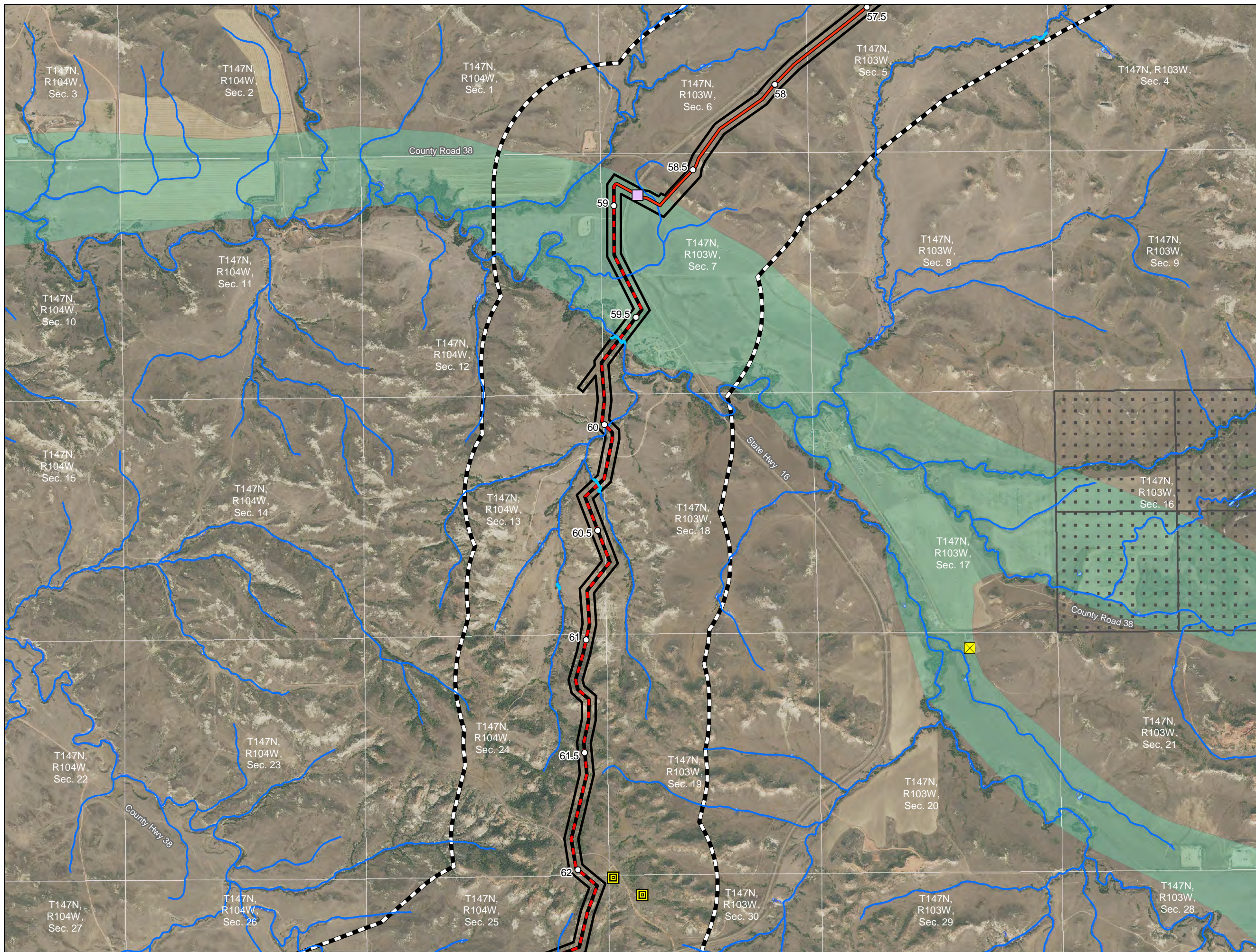
Selection Criteria (Other) Maps

Page 10 of 14

McKenzie County, ND



Source: Z:\Clients\W\ONEOK\Demicks_Lake_Pipeline\Permitting\PS\201901\Figures\DL_PSC_Supplemental_Other_Criteria_Map_Book.mxd



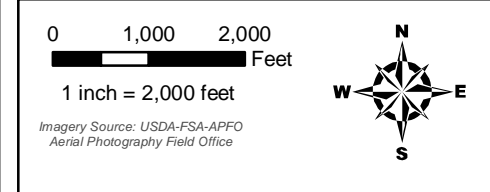
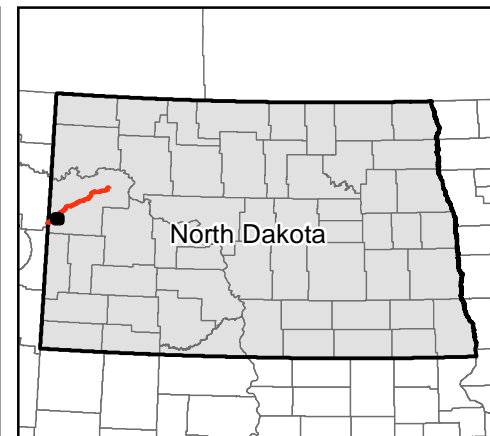
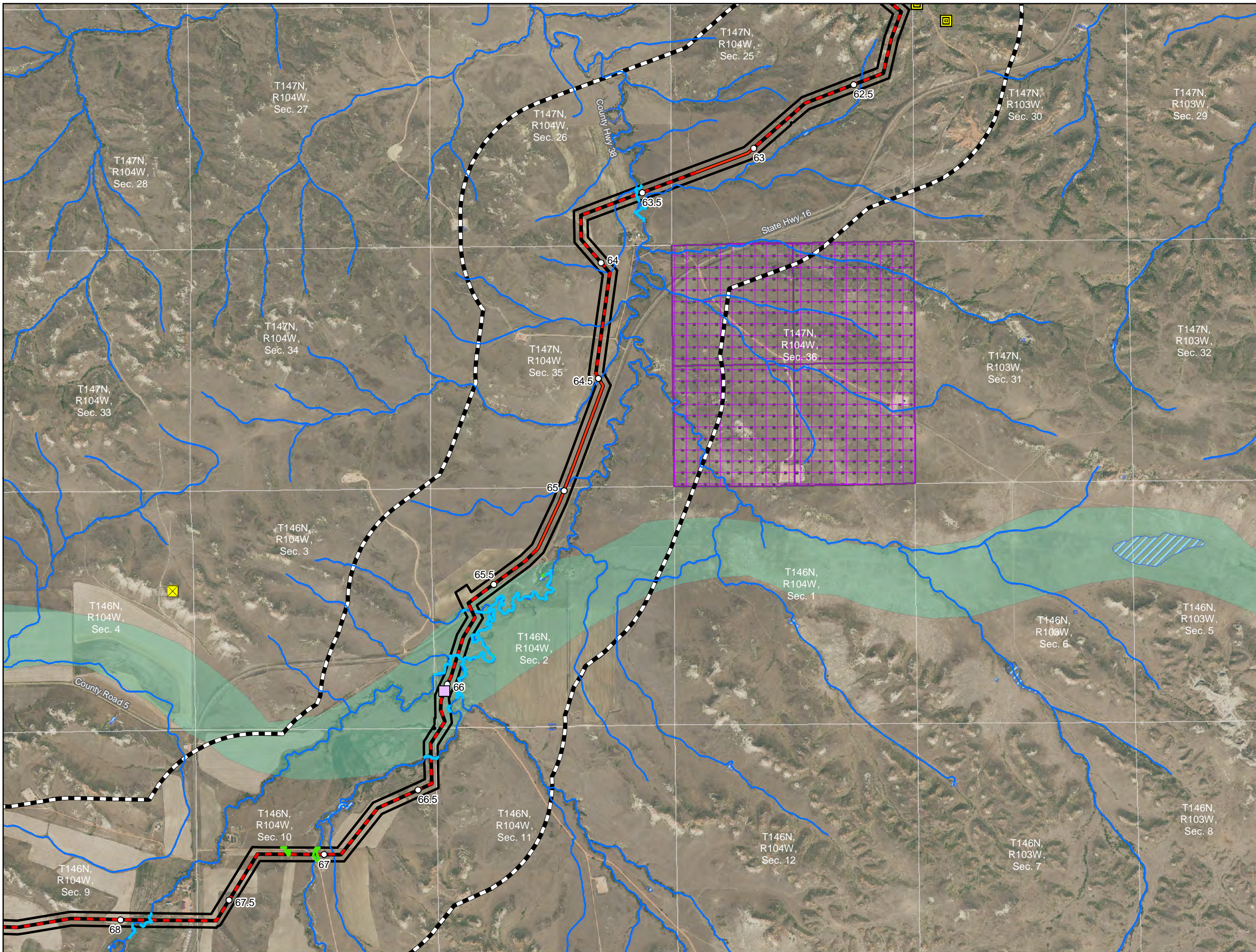
- Milepost
- Mainline Valve
- Launcher/Receiver
- Centerline: Co-located
- Centerline: Not Co-located
- Retired Centerline
- Retired Project Corridor
- Project Corridor
- Project Corridor Addition
- 1-mile Study Area
- Section Boundary
- Antenna Structure
- Microwave Station
- Field Surveys Not Complete
- NDDTL - School Trust Land
- NDDTL - Mineral Trust Land
- NHD Flowline
- Field Delineated Waterbody
- Field Delineated Wetland
- NWI Wetland
- Wellhead Community Protection Area
- Wellhead Non-Community Protection Area
- Surficial Aquifer

Exhibit B.4
ONEOK Bakken Pipeline, L.L.C.
Demicks Lake Pipeline Project

Selection Criteria (Other) Maps

Page 11 of 14
 McKenzie County, ND

Date: (3/1/2019) Source: Z:\Clients\W\ONEOK\Demicks_Lake_Pipeline\Permitting\FSC\201901\Figures\DLF_PSC_Supplemental_Other_Criteria_Map_Book.mxd



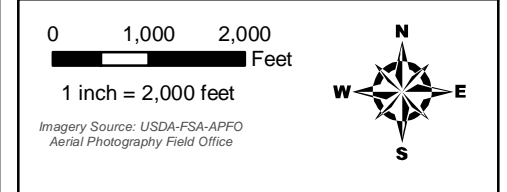
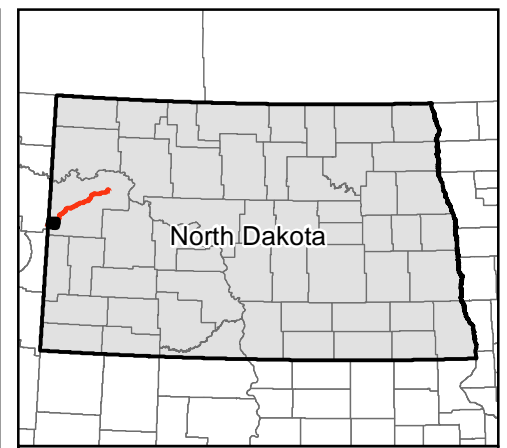
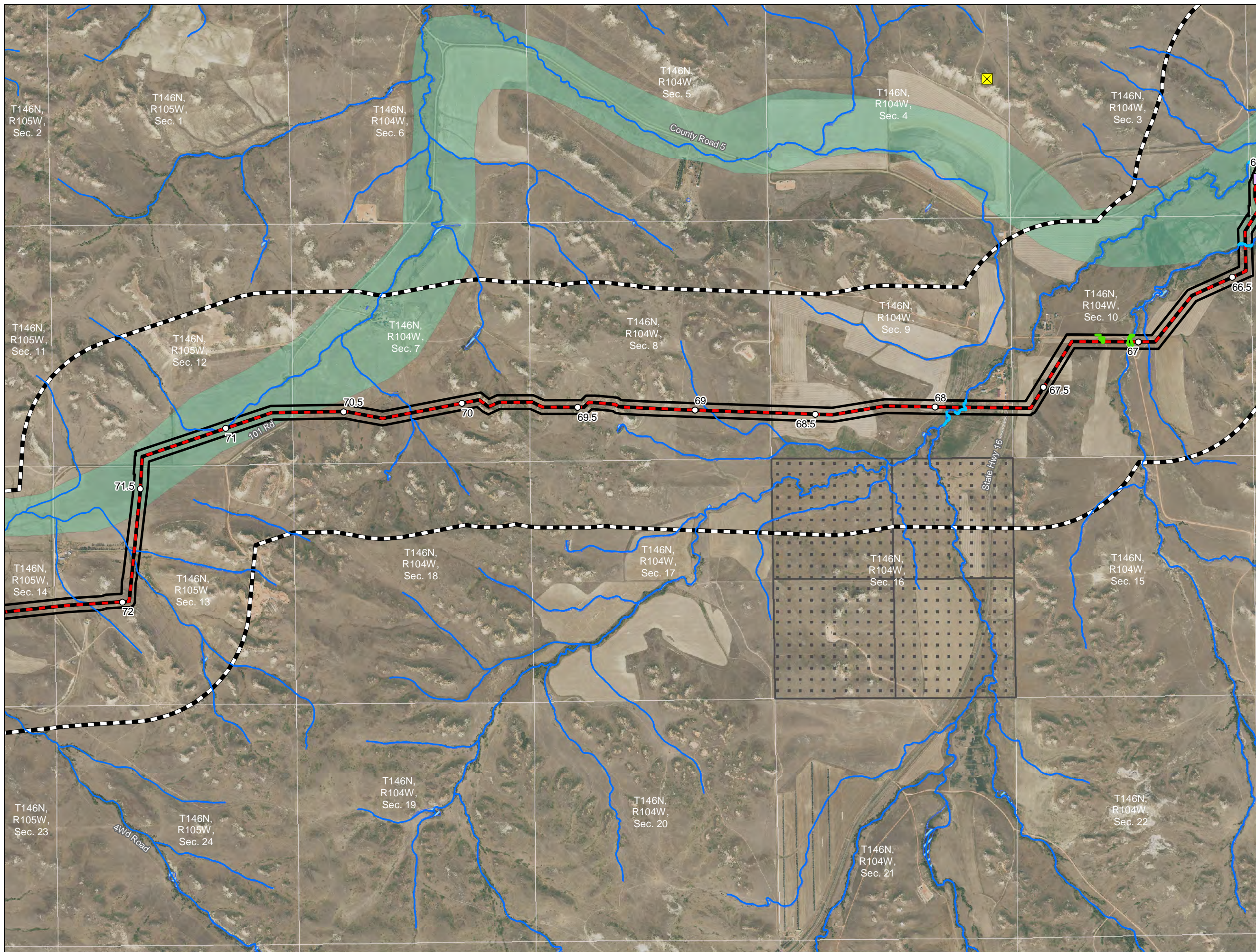
- Milepost
- Mainline Valve
- △ Launcher/Receiver
- Centerline: Co-located
- Centerline: Not Co-located
- Retired Centerline
- ▭ Retired Project Corridor
- ▭ Project Corridor
- ▭ Project Corridor Addition
- ▭ 1-mile Study Area
- ▭ Section Boundary
- Antenna Structure
- Microwave Station
- ▭ Field Surveys Not Complete
- ▭ NDDTL - School Trust Land
- ▭ NDDTL - Mineral Trust Land
- NHD Flowline
- ▭ Field Delineated Waterbody
- ▭ Field Delineated Wetland
- ▭ NWI Wetland
- ▭ Wellhead Community Protection Area
- ▭ Wellhead Non-Community Protection Area
- ▭ Surficial Aquifer

Exhibit B.4
ONEOK Bakken Pipeline, L.L.C.
Demicks Lake Pipeline Project

Selection Criteria (Other) Maps

Page 12 of 14
 McKenzie County, ND

Date: (3/1/2019) Source: Z:\Clients\W\ONEOK\Demicks_Lake_Pipeline\Permitting\PS\201901\Figures\DLF_PSC_Supplemental_Other_Criteria_Map_Book.mxd



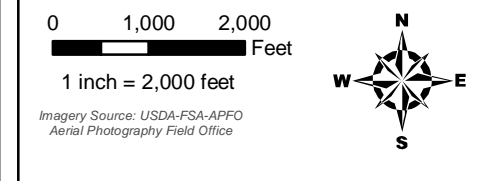
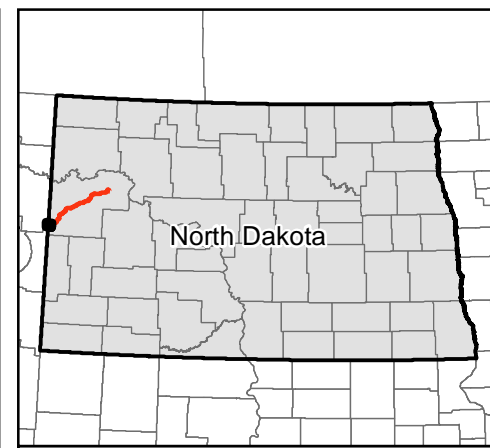
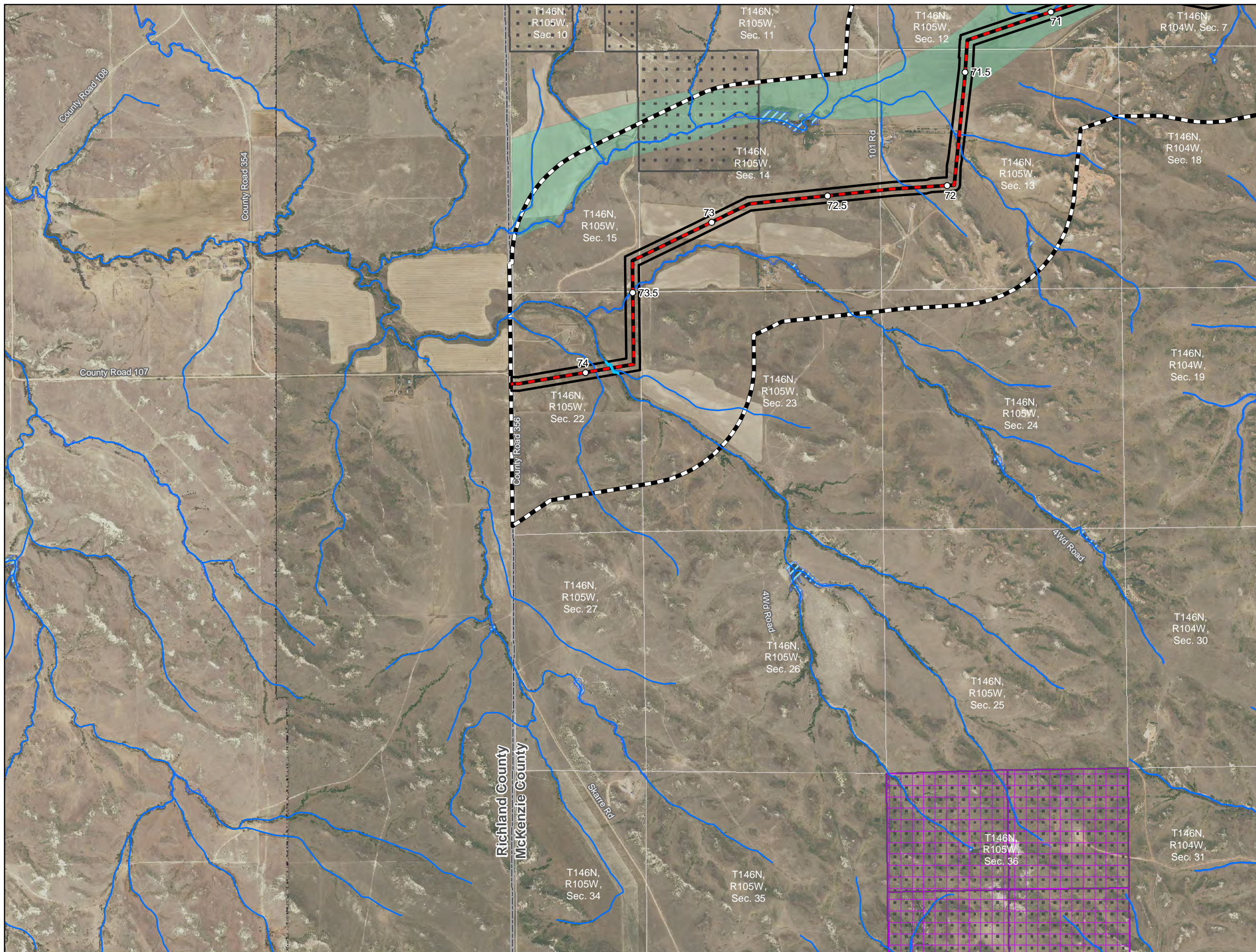
- Milepost
- Mainline Valve
- Launcher/Receiver
- Centerline: Co-located
- Centerline: Not Co-located
- Retired Centerline
- Retired Project Corridor
- Project Corridor
- Project Corridor Addition
- 1-mile Study Area
- Section Boundary
- Antenna Structure
- Microwave Station
- Field Surveys Not Complete
- NDDTL - School Trust Land
- NDDTL - Mineral Trust Land
- NHD Flowline
- Field Delineated Waterbody
- Field Delineated Wetland
- NWI Wetland
- Wellhead Community Protection Area
- Wellhead Non-Community Protection Area
- Surficial Aquifer

Exhibit B.4
ONEOK Bakken Pipeline, L.L.C.
Demicks Lake Pipeline Project

Selection Criteria (Other) Maps

Page 13 of 14
 McKenzie County, ND

Source: Z:\Clients\W\ONEOK\Demicks_Lake_Pipeline\Permitting\PS\201901\Figures\DLF_PSC_Supplemental_Other_Criteria_Map_Book.mxd



- Milepost
- Mainline Valve
- △ Launcher/Receiver
- Centerline: Co-located
- Centerline: Not Co-located
- Retired Centerline
- Retired Project Corridor
- Project Corridor
- Project Corridor Addition
- 1-mile Study Area
- Section Boundary
- Antenna Structure
- Microwave Station
- Field Surveys Not Complete
- NDDTL - School Trust Land
- NDDTL - Mineral Trust Land
- NHD Flowline
- Field Delineated Waterbody
- Field Delineated Wetland
- NWI Wetland
- Wellhead Community Protection Area
- Wellhead Non-Community Protection Area
- Surficial Aquifer

Exhibit B.4
ONEOK Bakken Pipeline, L.L.C.
Demicks Lake Pipeline Project

Selection Criteria (Other) Maps

Page 14 of 14
 McKenzie County, ND



Source: Z:\Clients\W_Pipeline\Permitting\PS\201901\Figures\DL_PSC_Supplemental_Other_Criteria_Map_Book.mxd