

- Milepost
  - ▲ Previous Launcher Location
  - New Alignment
  - Previous Alignment
  - ▭ Retired Project Corridor
  - ▭ Project Corridor
  - ▭ Project Corridor Addition
  - ▨ New Launcher Location
  - ▭ Section Boundary
- Avoidance Areas**
- ▲ Abandoned Mine
  - ◆ Potential for Future Slope Instability
  - ⬜ Occupied Structure within 500' of Route
  - ⬜ Occupied Structure (500' Buffer)
  - ⬜ Landslide Deposits
  - ⬜ National Grassland

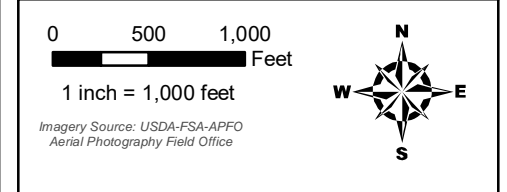
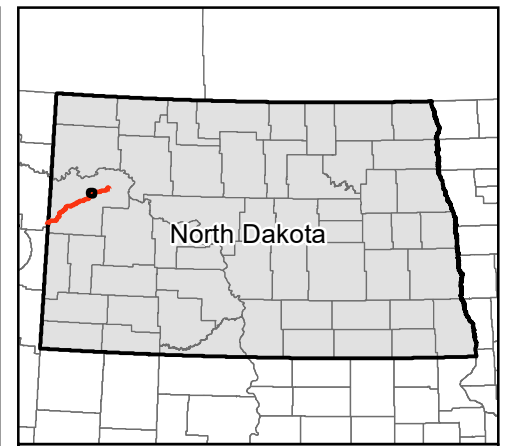
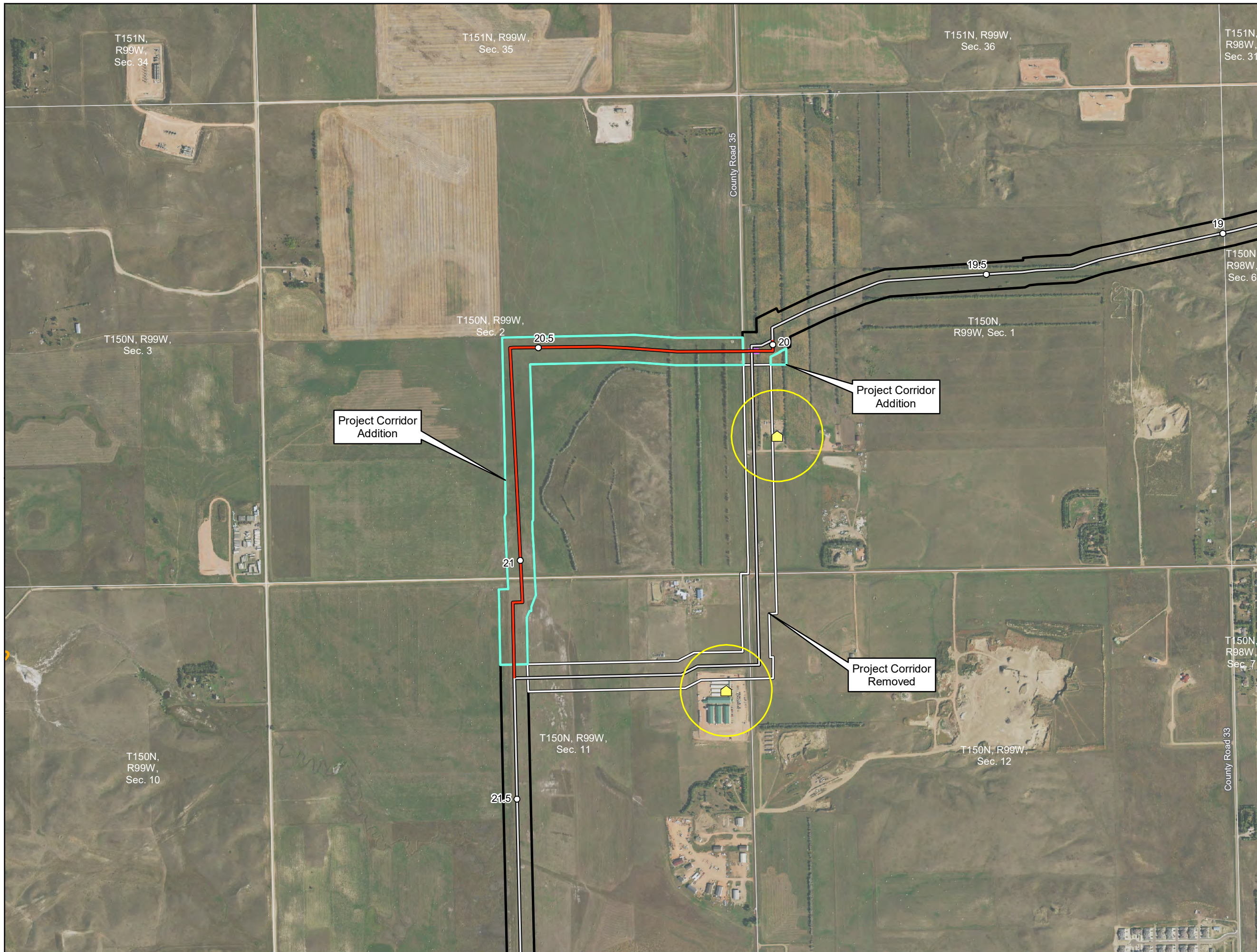
**Exhibit B.2**  
**ONEOK Bakken Pipeline, L.L.C.**  
**Demicks Lake Pipeline Project**

**Project Corridor Adjustments**

Page 1 of 2  
 McKenzie County, ND



Source: Z:\Clients\MT\_Pipeline\Permitting\PSO\201906\Figures\DLPL\_PSC\_Supplemental\_Corridor\_Modifications\_201906.mxd



- Milepost
  - ▲ Previous Launcher Location
  - New Alignment
  - Previous Alignment
  - ▭ Retired Project Corridor
  - ▭ Project Corridor
  - ▭ Project Corridor Addition
  - ▭ New Launcher Location
  - ▭ Section Boundary
- Avoidance Areas**
- ▲ Abandoned Mine
  - ◆ Potential for Future Slope Instability
  - Occupied Structure within 500' of Route
  - Occupied Structure (500' Buffer)
  - Landslide Deposits
  - National Grassland

**Exhibit B.2**  
**ONEOK Bakken Pipeline, L.L.C.**  
**Demicks Lake Pipeline Project**

**Project Corridor Adjustments**

Page 2 of 2  
 McKenzie County, ND

For Environmental Review Purposes Only 6/19/2019

Source: Z:\Clients\MT\_Pipeline\Permitting\PSO\201906\Figures\DLR\_PSC\_Supplemental\_Corridor\_Modifications\_201906.mxd