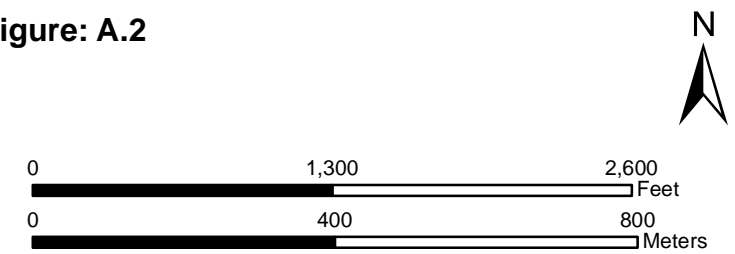


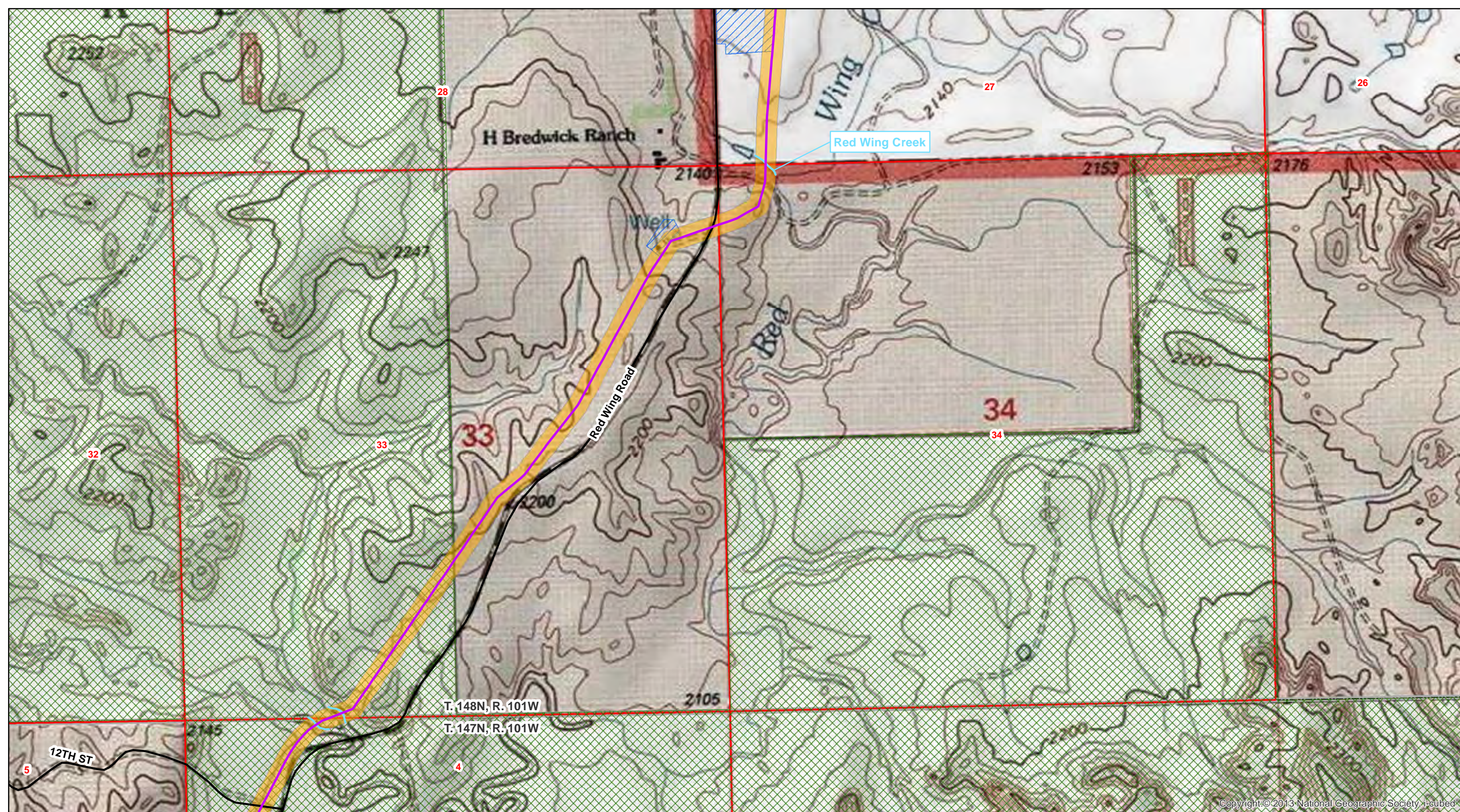
### 8" Wilson To Bowline Pipeline

- |                |            |                      |                  |                           |
|----------------|------------|----------------------|------------------|---------------------------|
| ★ Water Well   | — Pipeline | ▨ Woody Vegetation   | ▨ USFS Lands     | ▭ Section Boundary        |
| ● Noxious Weed | — Stream   | ▨ Pipeline Corridor  | ▨ ND Trust Lands | ▭ Township/Range Boundary |
| ■ Block Valve  | — Road     | ▨ Residence/Building |                  |                           |

Figure: A.2



T. 147N, R. 101W  
McKenzie County, North Dakota  
Projection: NAD 1983 UTM Zone13N  
Base Map: 7.5' USGS Topographic Map  
Source: esri map services

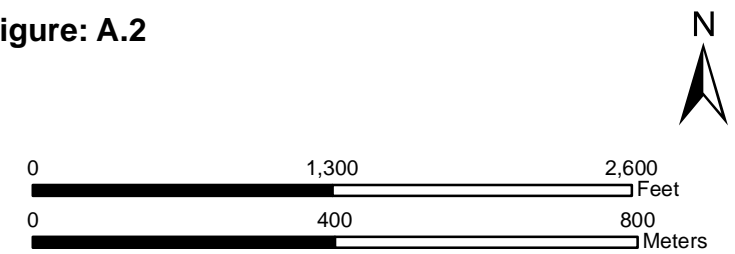


Copyright © 2013 National Geographic Society, 1-cubed

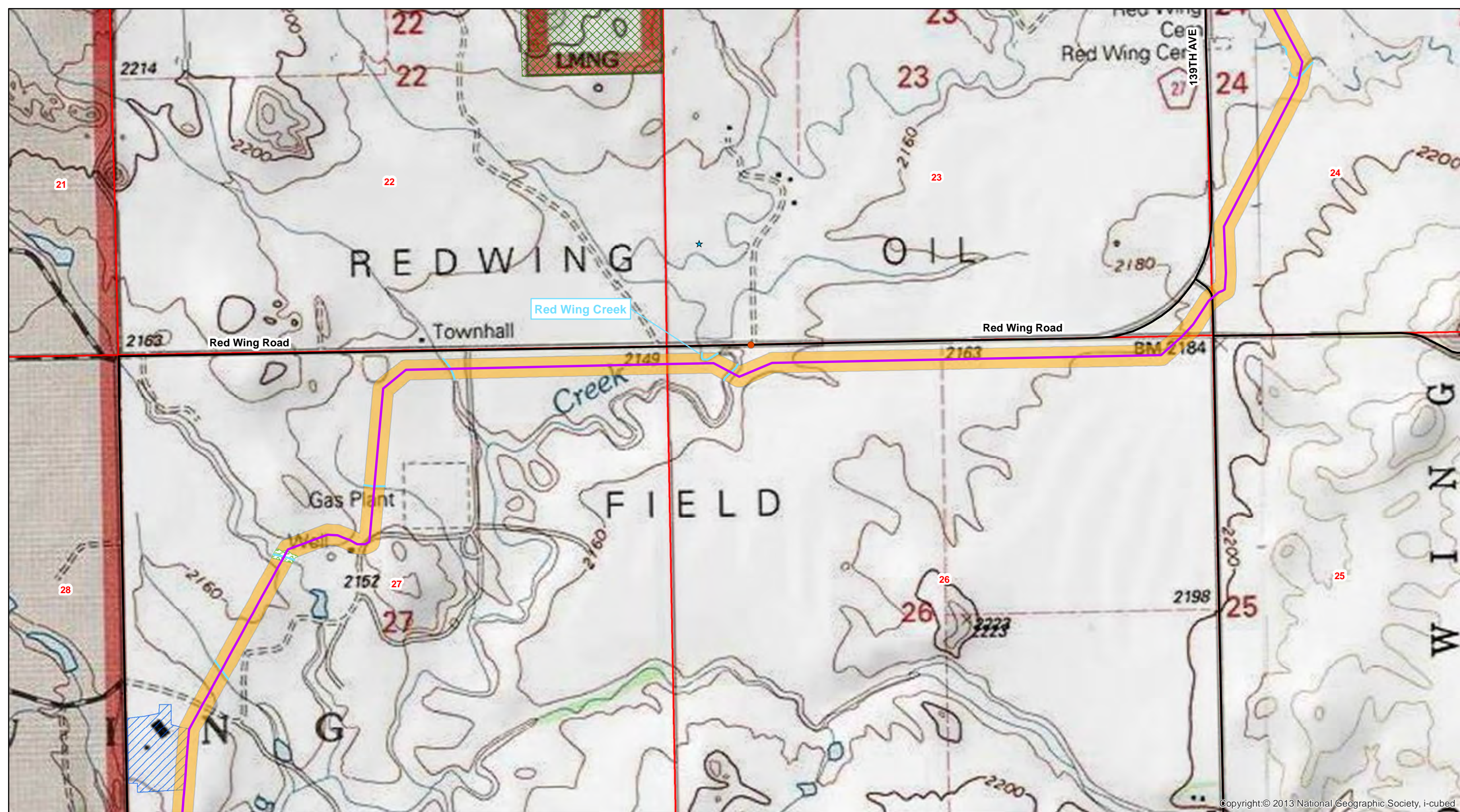
### 8" Wilson To Bowline Pipeline

- |                |            |                    |                |                         |
|----------------|------------|--------------------|----------------|-------------------------|
| ★ Water Well   | — Pipeline | Woody Vegetation   | USFS Lands     | Section Boundary        |
| ● Noxious Weed | — Stream   | Pipeline Corridor  | ND Trust Lands | Township/Range Boundary |
| ■ Block Valve  | — Road     | Residence/Building |                |                         |

Figure: A.2



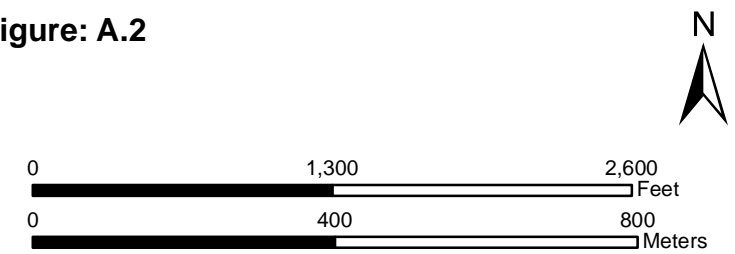
T. 147N, R. 101W and T. 148N, R. 101W  
 McKenzie County, North Dakota  
 Projection: NAD 1983 UTM Zone13N  
 Base Map: 7.5' USGS Topographic Map  
 Source: esri map services



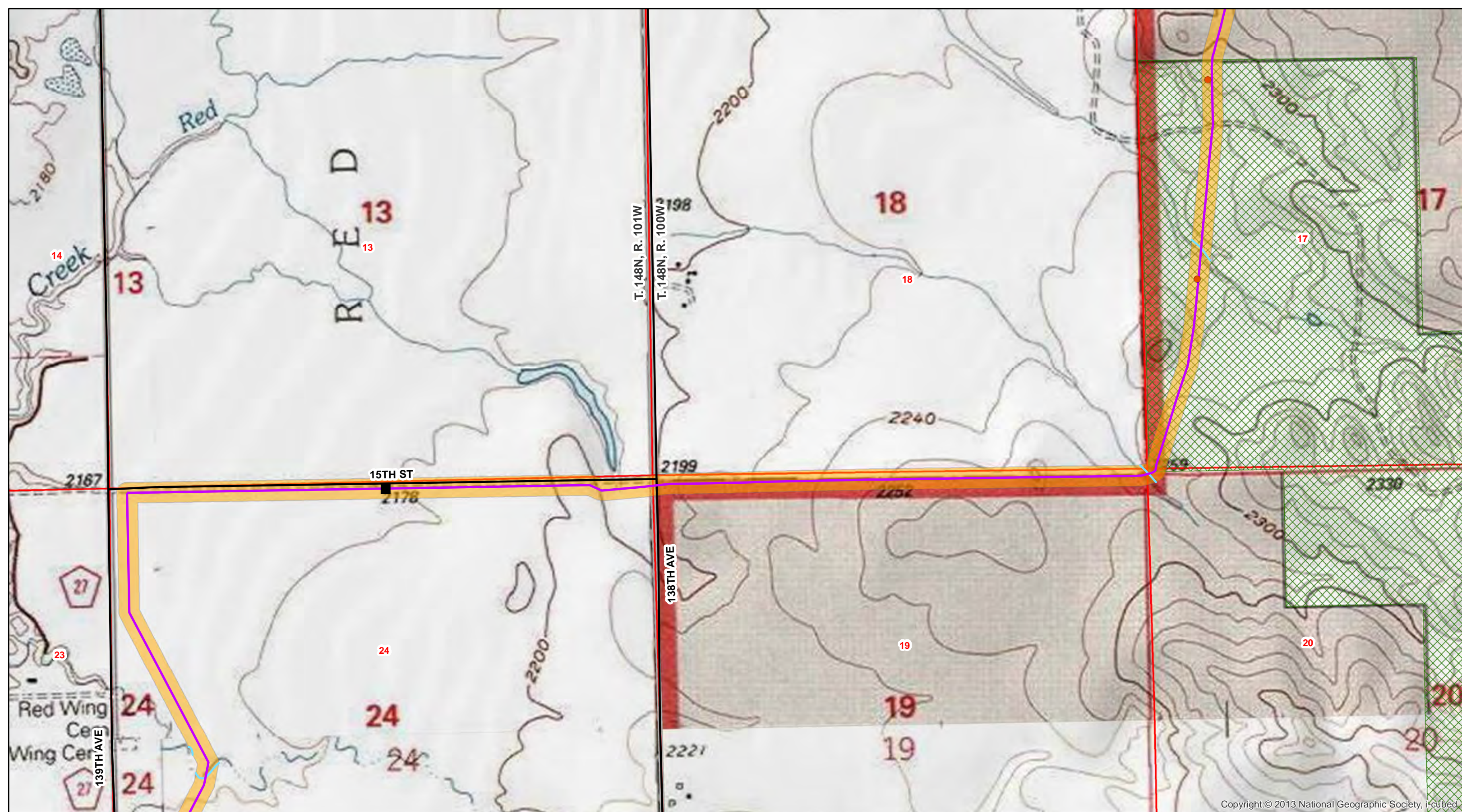
### 8" Wilson To Bowline Pipeline

- ★ Water Well
- Noxious Weed
- Block Valve
- Pipeline
- Stream
- Road
- ▨ Woody Vegetation
- ▨ USFS Lands
- ▨ ND Trust Lands
- ▭ Section Boundary
- ▭ Township/Range Boundary
- ▭ Pipeline Corridor
- ▭ Residence/Building

Figure: A.2



T. 148N, R. 101W  
 McKenzie County, North Dakota  
 Projection: NAD 1983 UTM Zone13N  
 Base Map: 7.5' USGS Topographic Map  
 Source: esri map services

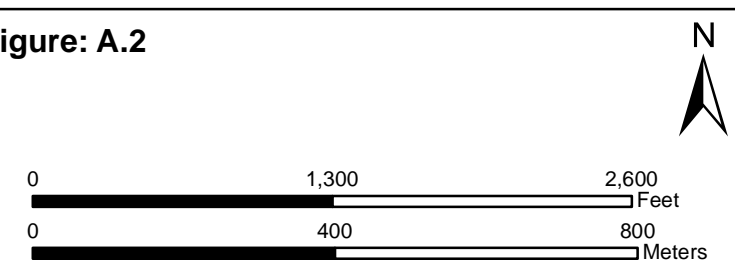


Copyright: © 2013 National Geographic Society, i-cubed

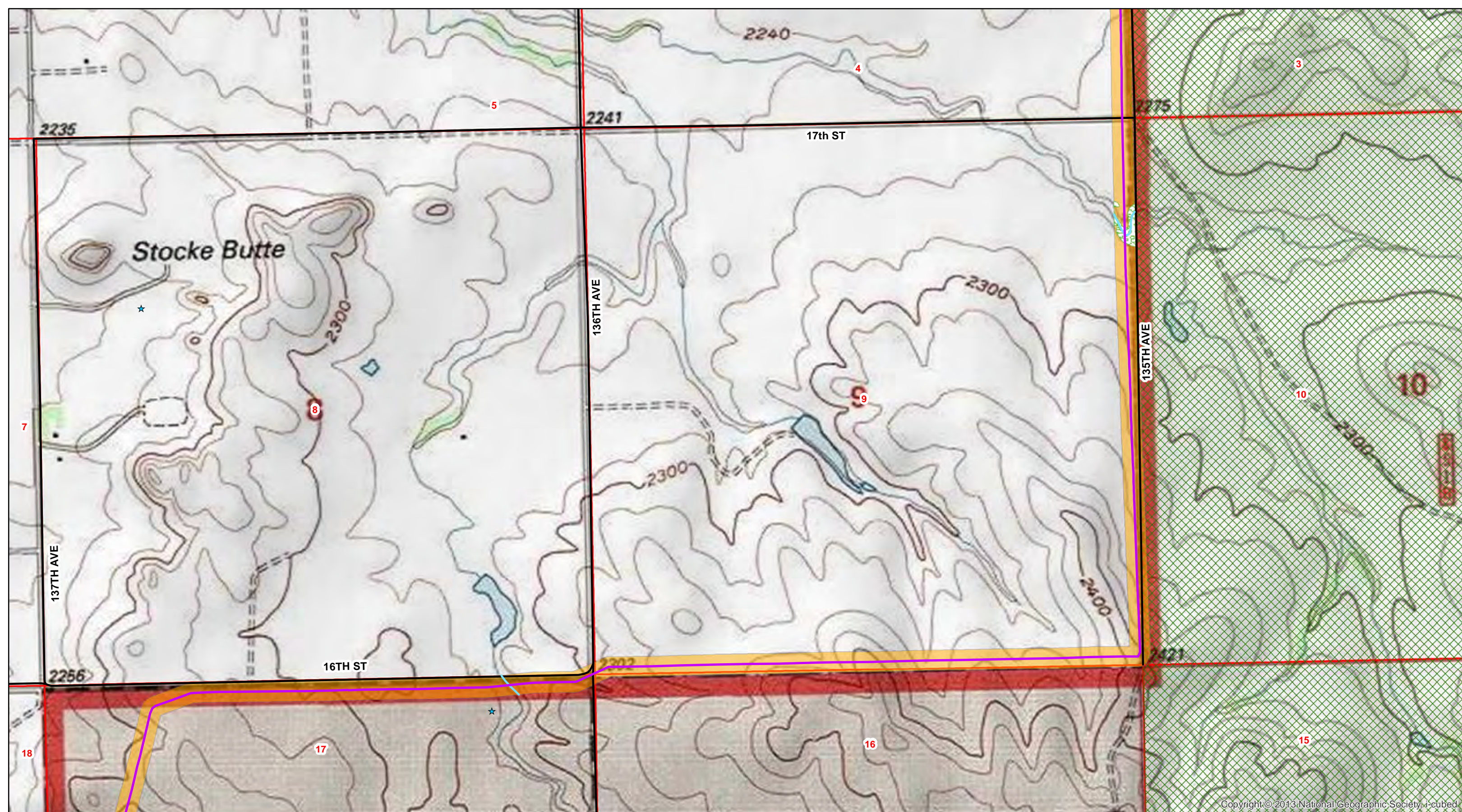
### 8" Wilson To Bowline Pipeline

- |                |            |                      |                  |                           |
|----------------|------------|----------------------|------------------|---------------------------|
| ★ Water Well   | — Pipeline | ▨ Woody Vegetation   | ▨ USFS Lands     | ▭ Section Boundary        |
| ● Noxious Weed | — Stream   | ▨ Pipeline Corridor  | ▨ ND Trust Lands | ▭ Township/Range Boundary |
| ■ Block Valve  | — Road     | ▨ Residence/Building |                  |                           |

Figure: A.2



T. 148N, R. 101W and T. 148N, R. 100W  
 McKenzie County, North Dakota  
 Projection: NAD 1983 UTM Zone13N  
 Base Map: 7.5' USGS Topographic Map  
 Source: esri map services

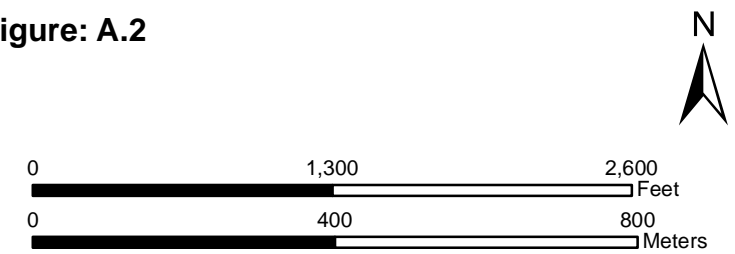


Copyright © 2013 National Geographic Society, 4-cubed

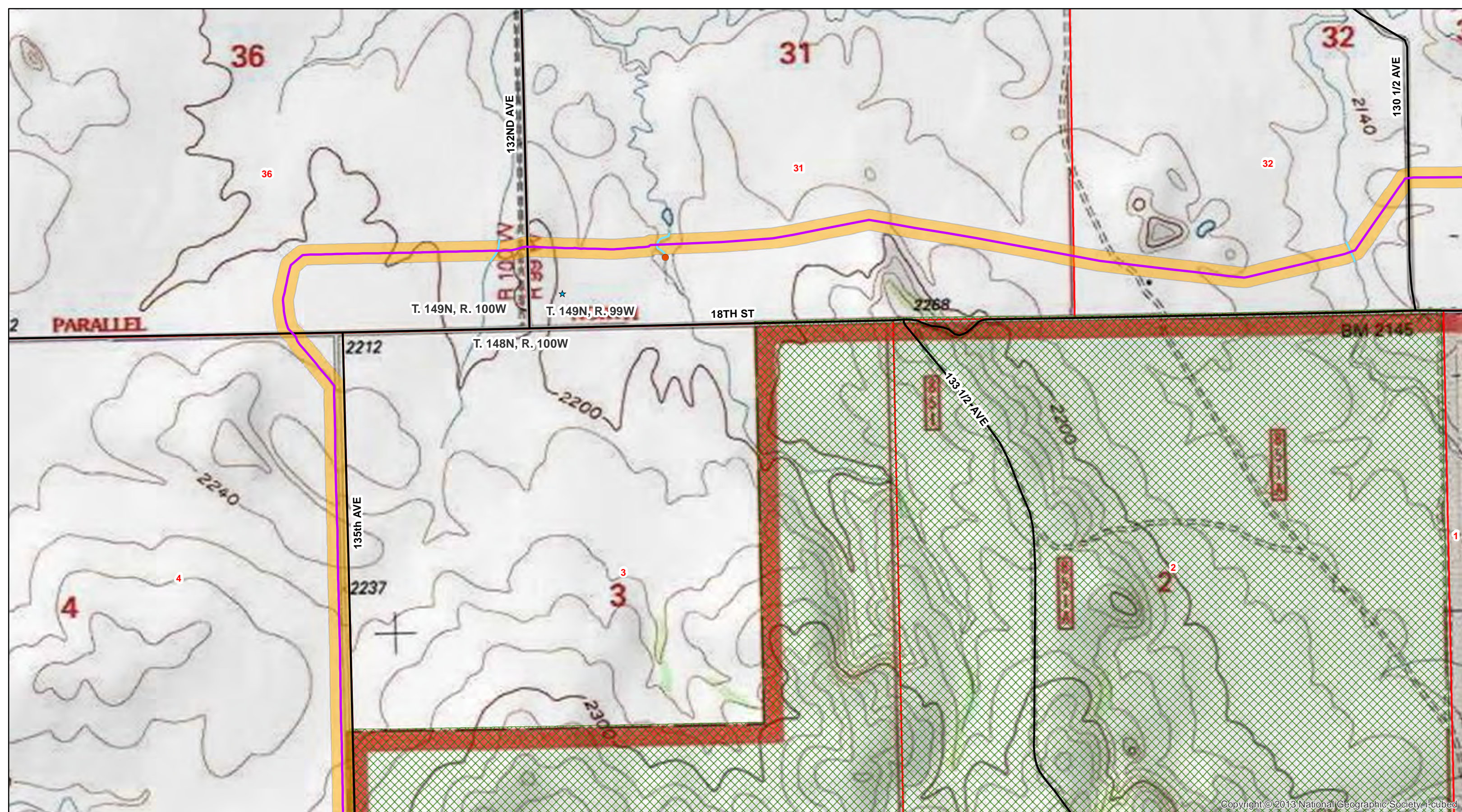
### 8" Wilson To Bowline Pipeline

- |   |              |   |          |  |                    |  |                |  |                         |
|---|--------------|---|----------|--|--------------------|--|----------------|--|-------------------------|
| ★ | Water Well   | — | Pipeline |  | Woody Vegetation   |  | USFS Lands     |  | Section Boundary        |
| ● | Noxious Weed | — | Stream   |  | Pipeline Corridor  |  | ND Trust Lands |  | Township/Range Boundary |
| ■ | Block Valve  | — | Road     |  | Residence/Building |  |                |  |                         |

Figure: A.2



T. 148N, R. 100W  
 McKenzie County, North Dakota  
 Projection: NAD 1983 UTM Zone13N  
 Base Map: 7.5' USGS Topographic Map  
 Source: esri map services

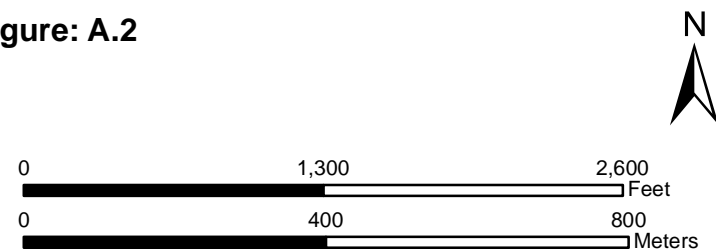


Copyright © 2013 National Geographic Society, 1-cubed

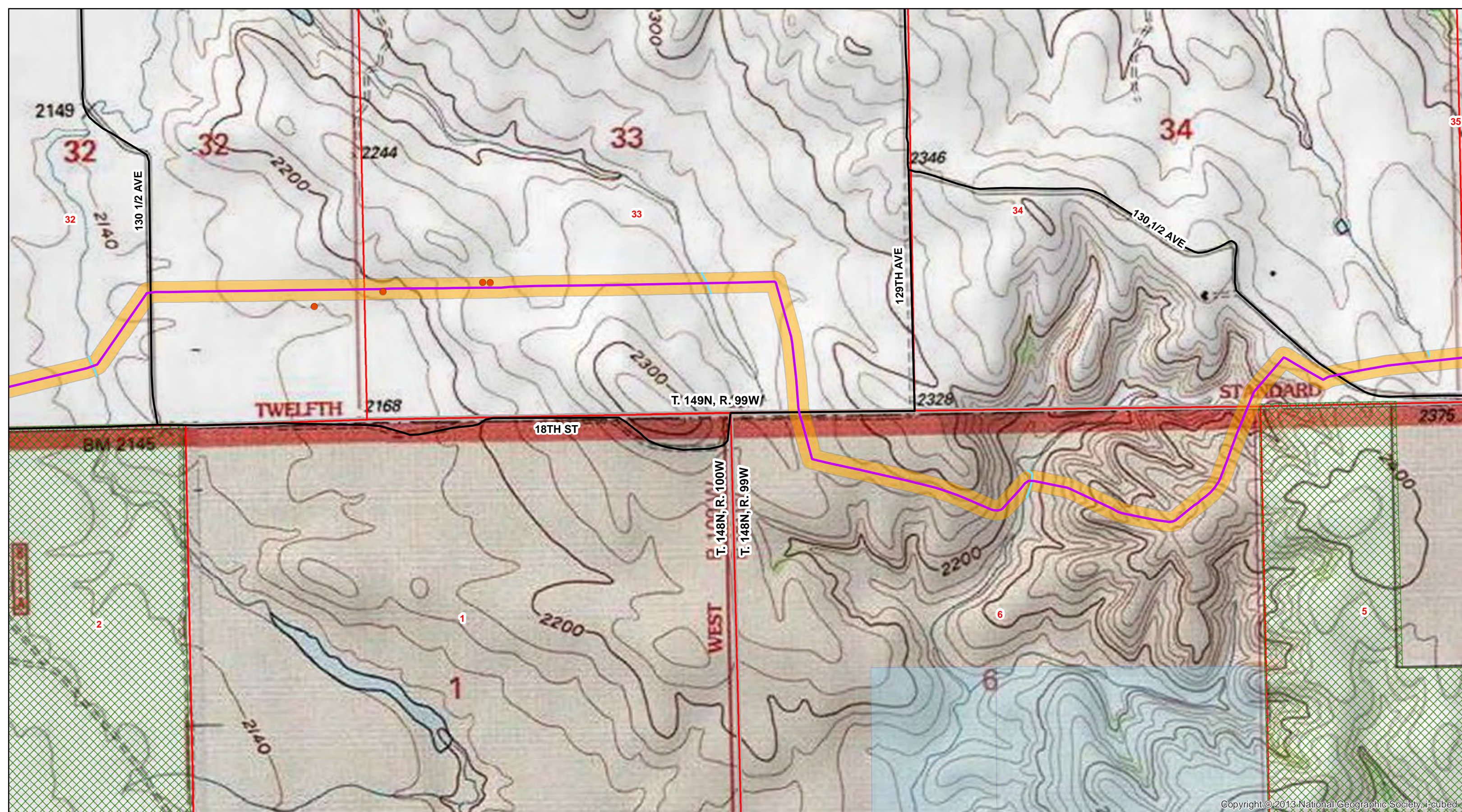
### 8" Wilson To Bowline Pipeline

- |   |              |   |          |  |                    |  |                |  |                         |
|---|--------------|---|----------|--|--------------------|--|----------------|--|-------------------------|
| ★ | Water Well   | — | Pipeline |  | Woody Vegetation   |  | USFS Lands     |  | Section Boundary        |
| ● | Noxious Weed | — | Stream   |  | Pipeline Corridor  |  | ND Trust Lands |  | Township/Range Boundary |
| ■ | Block Valve  | — | Road     |  | Residence/Building |  |                |  |                         |

Figure: A.2



T. 148N, R. 100W, T. 149N, R. 100W, and T. 149N, R. 99W  
 McKenzie County, North Dakota  
 Projection: NAD 1983 UTM Zone13N  
 Base Map: 7.5' USGS Topographic Map  
 Source: esri map services

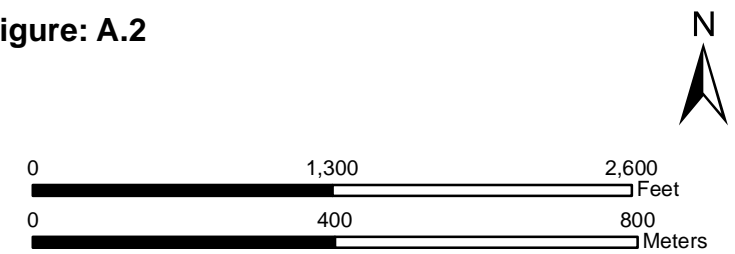


Copyright: © 2013 National Geographic Society, 1-cubed

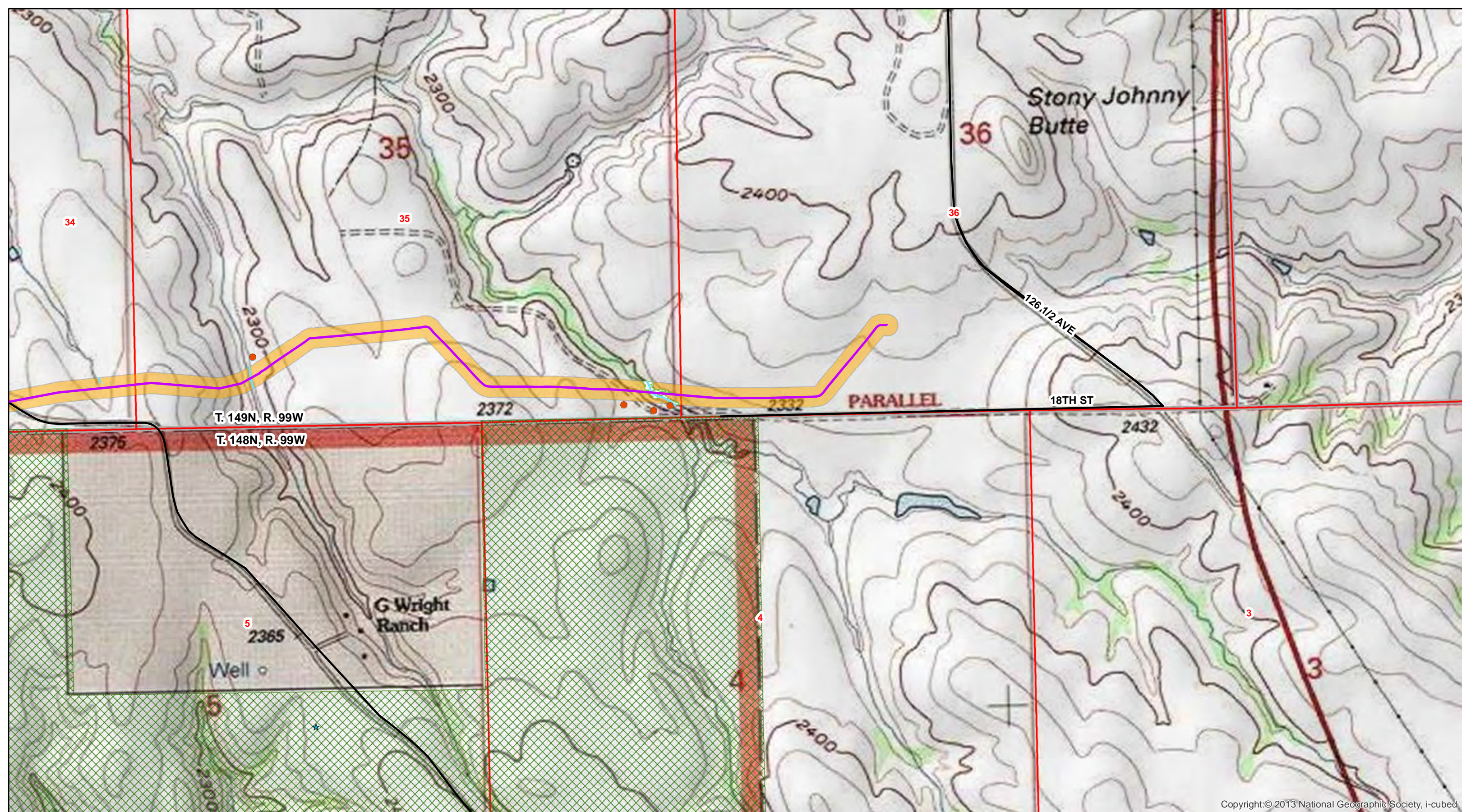
### 8" Wilson To Bowline Pipeline

- ★ Water Well
- Noxious Weed
- Block Valve
- Pipeline
- Stream
- Road
- ▨ Woody Vegetation
- ▨ USFS Lands
- ▨ ND Trust Lands
- ▨ Pipeline Corridor
- ▨ Residence/Building
- ▭ Section Boundary
- ▭ Township/Range Boundary

Figure: A.2



T. 148N, R. 100W, T. 148N, R. 99W, and T. 149N, R. 99W  
 McKenzie County, North Dakota  
 Projection: NAD 1983 UTM Zone13N  
 Base Map: 7.5' USGS Topographic Map  
 Source: esri map services

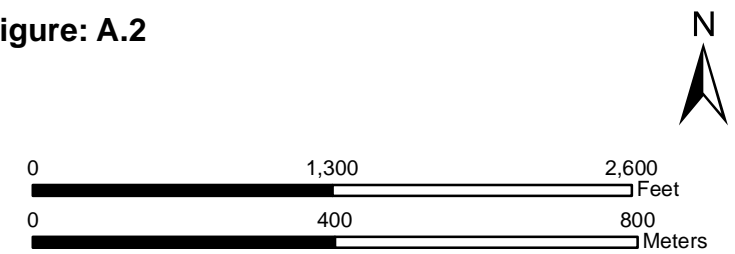


Copyright: © 2013 National Geographic Society, i-cubed

### 8" Wilson To Bowline Pipeline

- |                |            |                    |                |                         |
|----------------|------------|--------------------|----------------|-------------------------|
| ★ Water Well   | — Pipeline | Woody Vegetation   | USFS Lands     | Section Boundary        |
| ● Noxious Weed | — Stream   | Pipeline Corridor  | ND Trust Lands | Township/Range Boundary |
| ■ Block Valve  | — Road     | Residence/Building |                |                         |

Figure: A.2



T. 148N, R. 99W and T. 149N, R. 99W  
 McKenzie County, North Dakota  
 Projection: NAD 1983 UTM Zone13N  
 Base Map: 7.5' USGS Topographic Map  
 Source: esri map services