



# North Dakota Geological Survey

Edward C. Murphy - State Geologist

Department of Mineral Resources

Lynn D. Helms - Director

North Dakota Industrial Commission

[www.state.nd.us/ndgs](http://www.state.nd.us/ndgs)

June 3, 2019

Geri Schmaltz  
ND Public Service Commission  
600 E. Boulevard Ave, Dept. 408  
Bismarck, ND 58505-0840



Re: Belle Fourche Pipeline Company - Case No. PU-18-404  
8-inch Wilson-Bowline Pipeline Conversion Project – Siting Application Corridor Review Comments

The North Dakota Geological Survey appreciates the notification and opportunity to review and provide comment on the proposed oil and gas energy infrastructure development project. The review of the Notice of Filing and Public Hearing for Case No. PU-18-404 of May 1, 2019 was completed on June 3, 2019. We dropped in the alignment of the existing pipeline route on our landslide base maps and compared it to the locations of landslides that have been identified by detailed mapping work previously completed by our office (summarized in the attached map). Additionally, the entire existing pipeline route was evaluated by reviewing contemporary National Agriculture Imagery Program (NAIP) aerial imagery from 2017 for the identification of any additional recent landslide areas.

We noted that the proposed pipeline route generally passes along areas that are generally topographically flat with little relief and consequently are generally free of landslides. However, three locations of interest, where slope failures are observed near or within the pipeline route were noted. The locations of these areas are listed below:

#### Locations of Interest along Pipeline Route

No.	Map Book Page	County	Description	Longitude	Latitude
1	2	McKenzie	Stream Crossing – Slope Failures Adjacent to Route	-103.560041	47.588459
2	7	McKenzie	Stream Crossing (East & West Facing Slopes)	-103.342168	47.672478
3	7	McKenzie	Badlands Topography – Slope Failures Along Route	-103.334337	47.674658

Landslide maps and data, along with LiDAR elevation data sets and mapping products for the project area are available on our website at: <https://www.dmr.nd.gov/ndgs/lidar/>

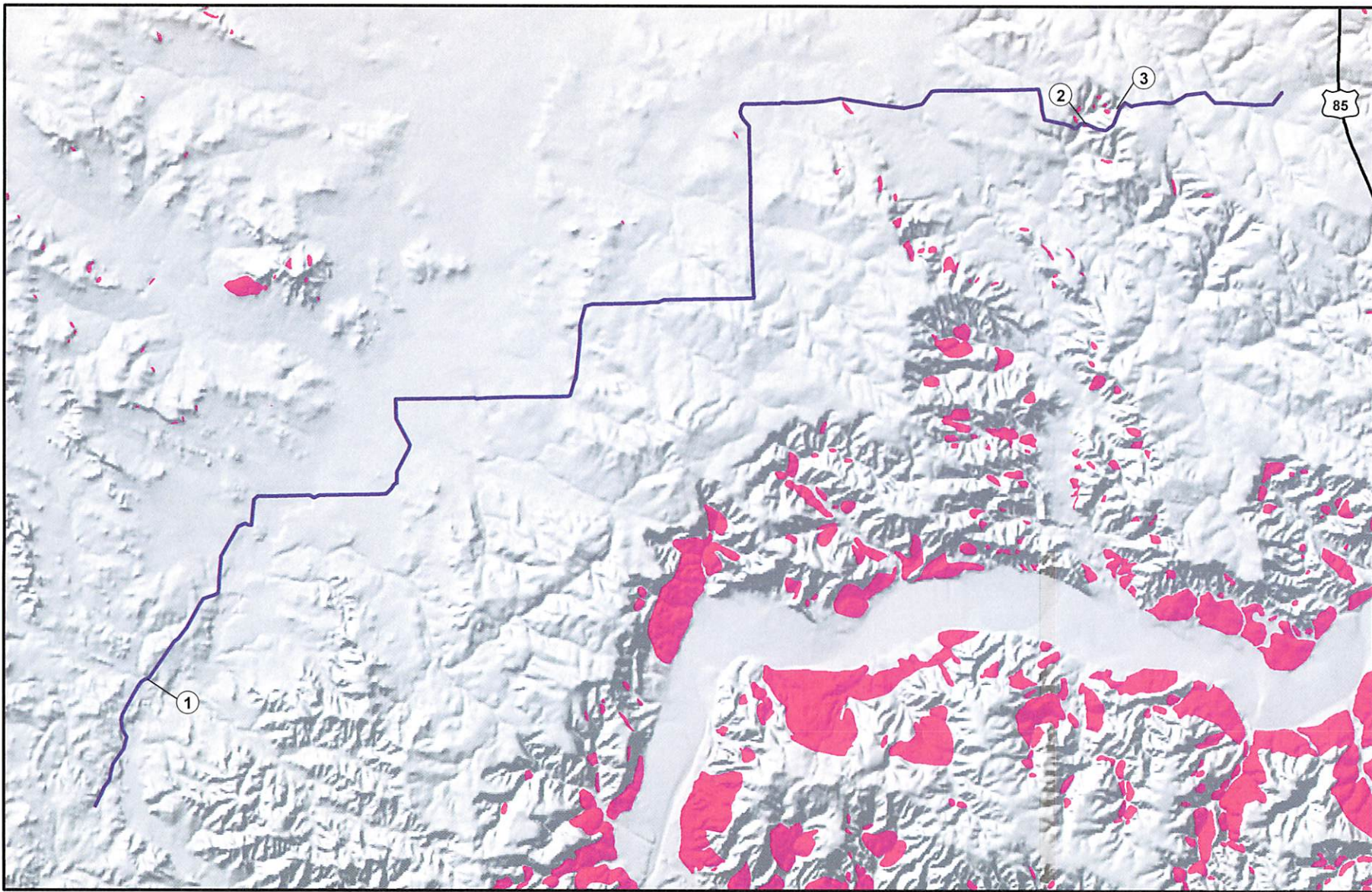
Careful examination of existing and proposed pipeline routes in North Dakota, along with applicable engineering evaluations of locations of concern and adherence to appropriate construction practices should be continued. You may also contact our offices directly, with any additional questions or comments, at (701) 328-8000.

Sincerely,

North Dakota Geological Survey:

  
Fred Anderson  
Geologist  
[fjanderson@nd.gov](mailto:fjanderson@nd.gov)

37 PU-18-404 Filed: 6/4/2019 Pages: 2  
Comments - North Dakota Geological Survey



**Legend**

- Belle Fourche Pipeline
- Landslides

**8" Wilson To Bowline Pipeline**

