

52 PU-18-404 Filed 07/09/2019 Pages: 14
 Late-filed Exhibit 10 - Updated Maps with Avoidance and Exclusion Areas in Study Area
 Belle Fourche Pipeline Company
 Casey Furey, Crowley Fleck PLLP

8" Wilson To Bowline Pipeline

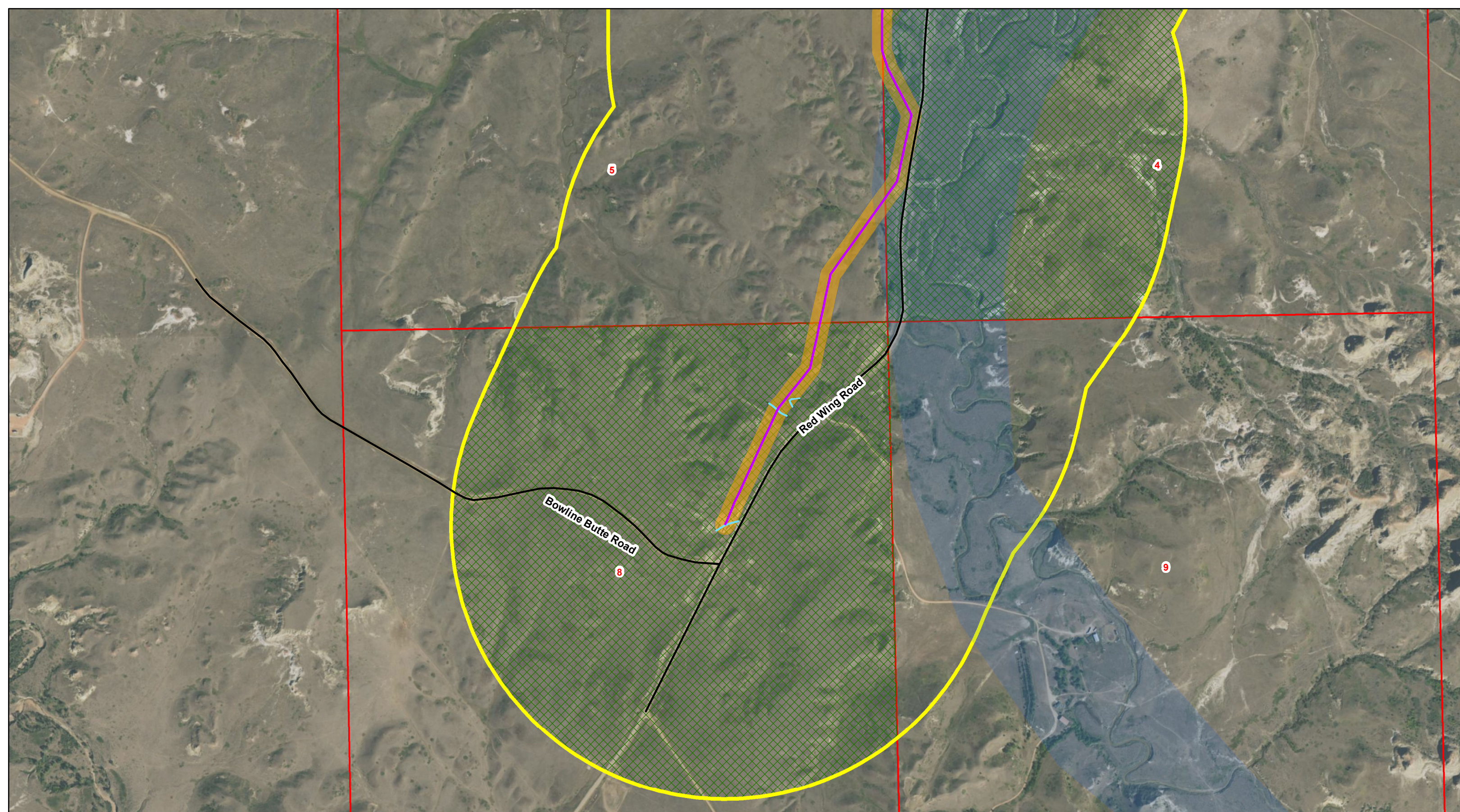
- ★ Watford City
- Wilson to Bowline Pipeline
- Major Roads
- Mapbook Page Layout

Late-Filed Exhibit 10

Pipeline Company

0 1.5 3 Miles

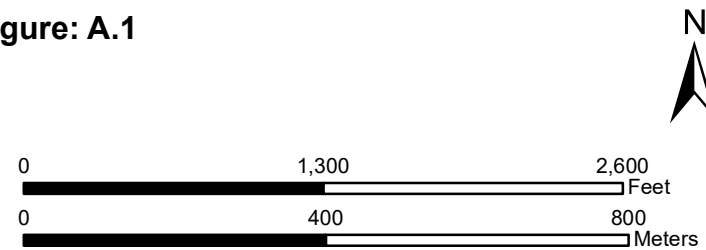
0 3.5 7 Kilometers

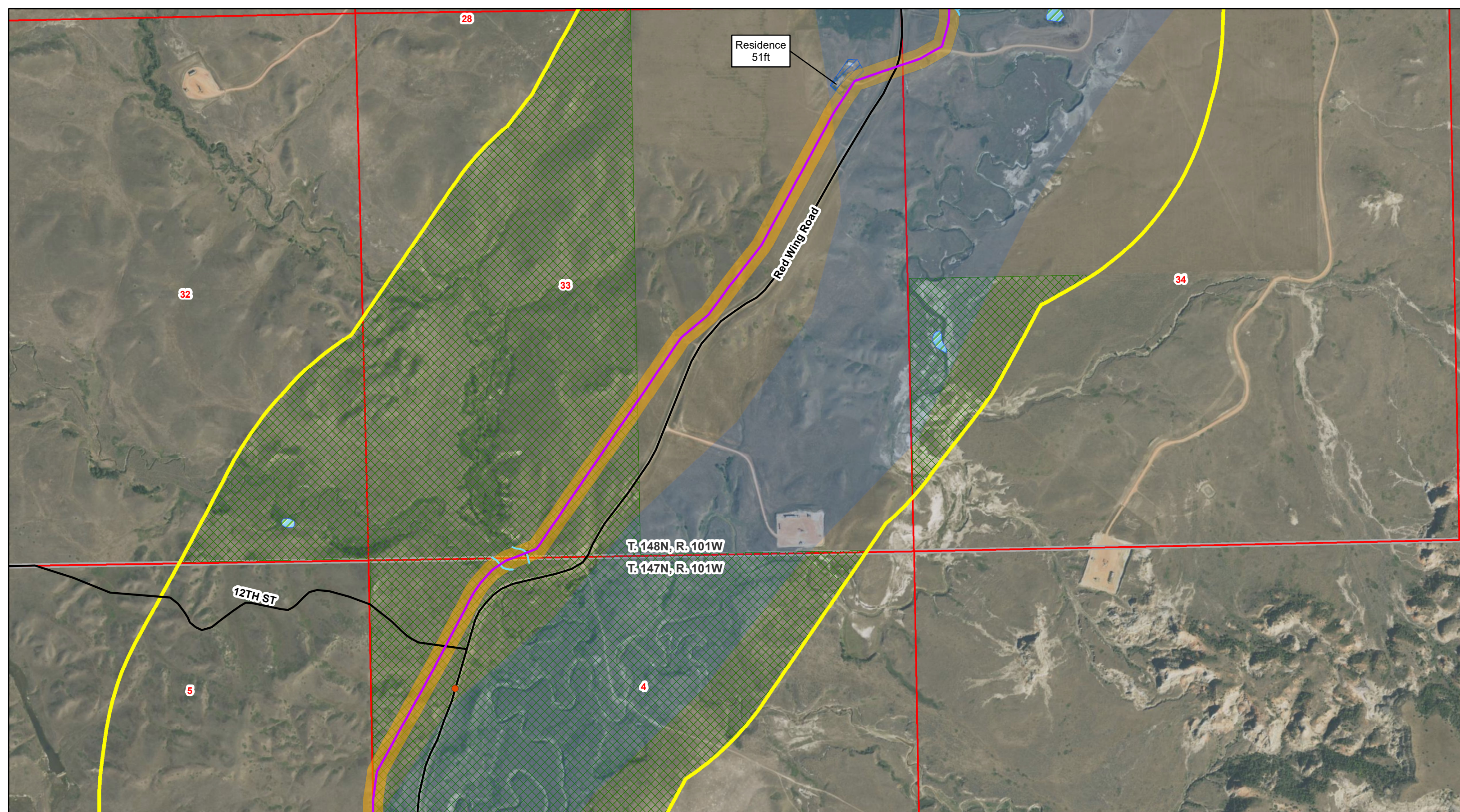


8" Wilson To Bowline Pipeline

- | | | | |
|--------------|-------------------------|---------------------------|-------------------------|
| Noxious Weed | Pipeline Corridor | Woody Vegetation | USFS Lands |
| Block Valve | Study Area | NWI Wetlands | Section Boundary |
| Pipeline | Residence/Building | Geological Unstable Areas | Township/Range Boundary |
| Road | Tobacco Garden Acquirer | ND Trust Lands | |
| Stream | | | |

Figure: A.1

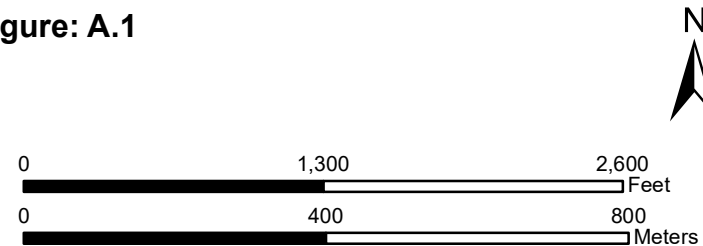


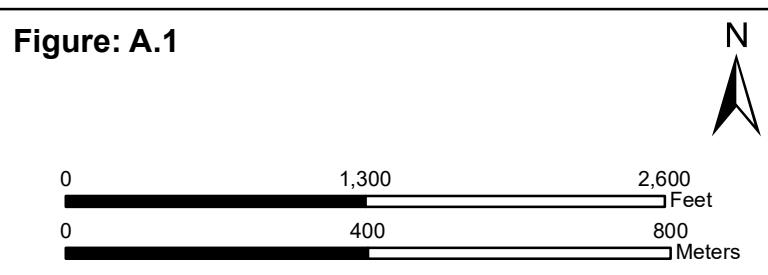
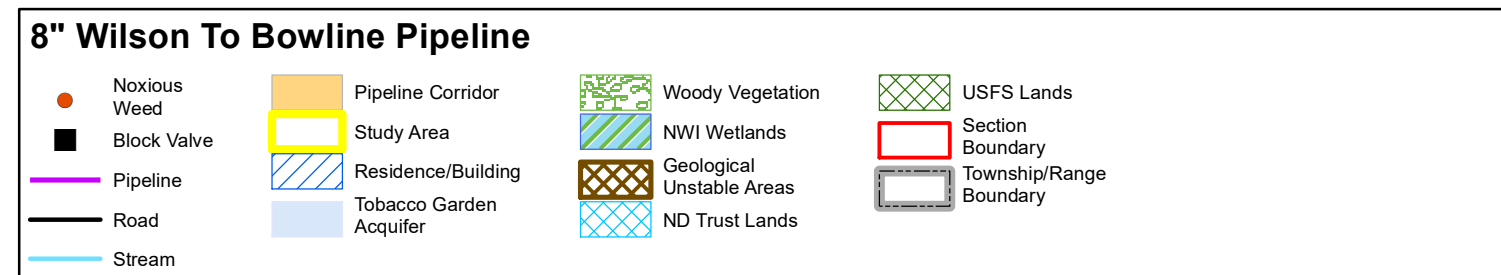
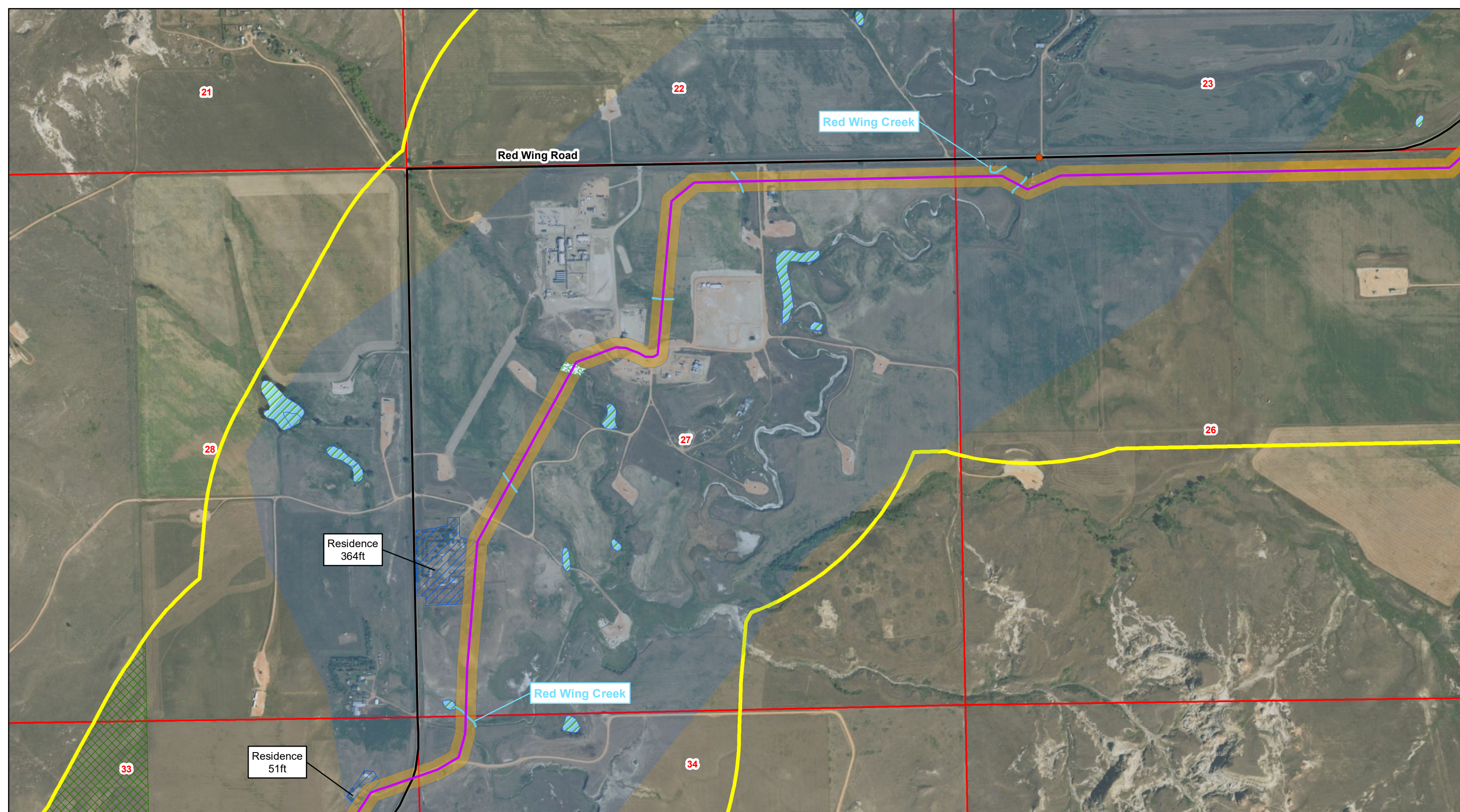


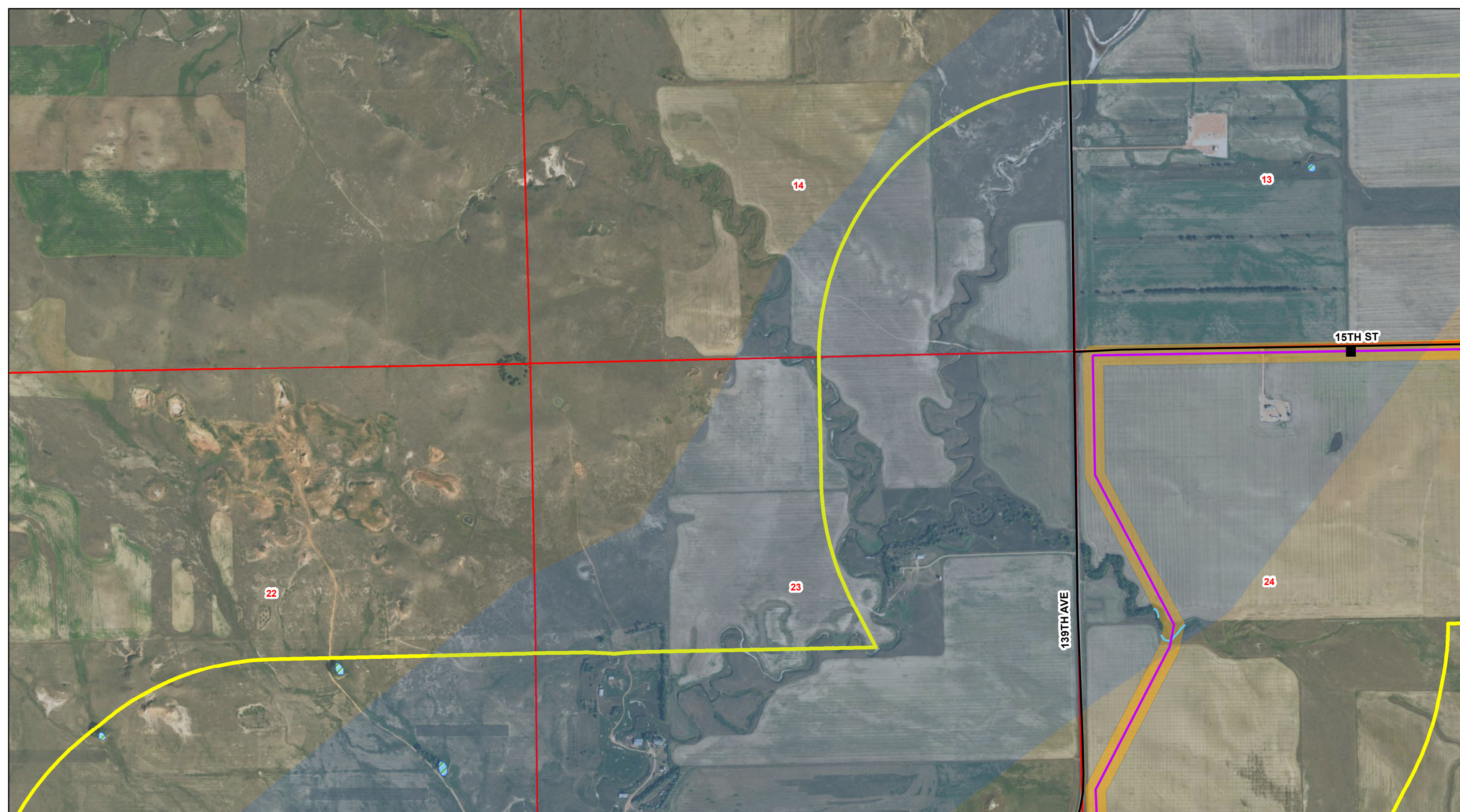
8" Wilson To Bowline Pipeline

- | | | | |
|--------------|-------------------------|---------------------------|-------------------------|
| Noxious Weed | Pipeline Corridor | Woody Vegetation | USFS Lands |
| Block Valve | Study Area | NWI Wetlands | Section Boundary |
| Pipeline | Residence/Building | Geological Unstable Areas | Township/Range Boundary |
| Road | Tobacco Garden Acquirer | ND Trust Lands | |
| Stream | | | |

Figure: A.1







8" Wilson To Bowline Pipeline

Noxious Weed	Pipeline Corridor	Woody Vegetation	USFS Lands
Block Valve	Study Area	NWI Wetlands	Section Boundary
Pipeline	Residence/Building	Geological Unstable Areas	Township/Range Boundary
Road	Tobacco Garden Acquirer	ND Trust Lands	
Stream			

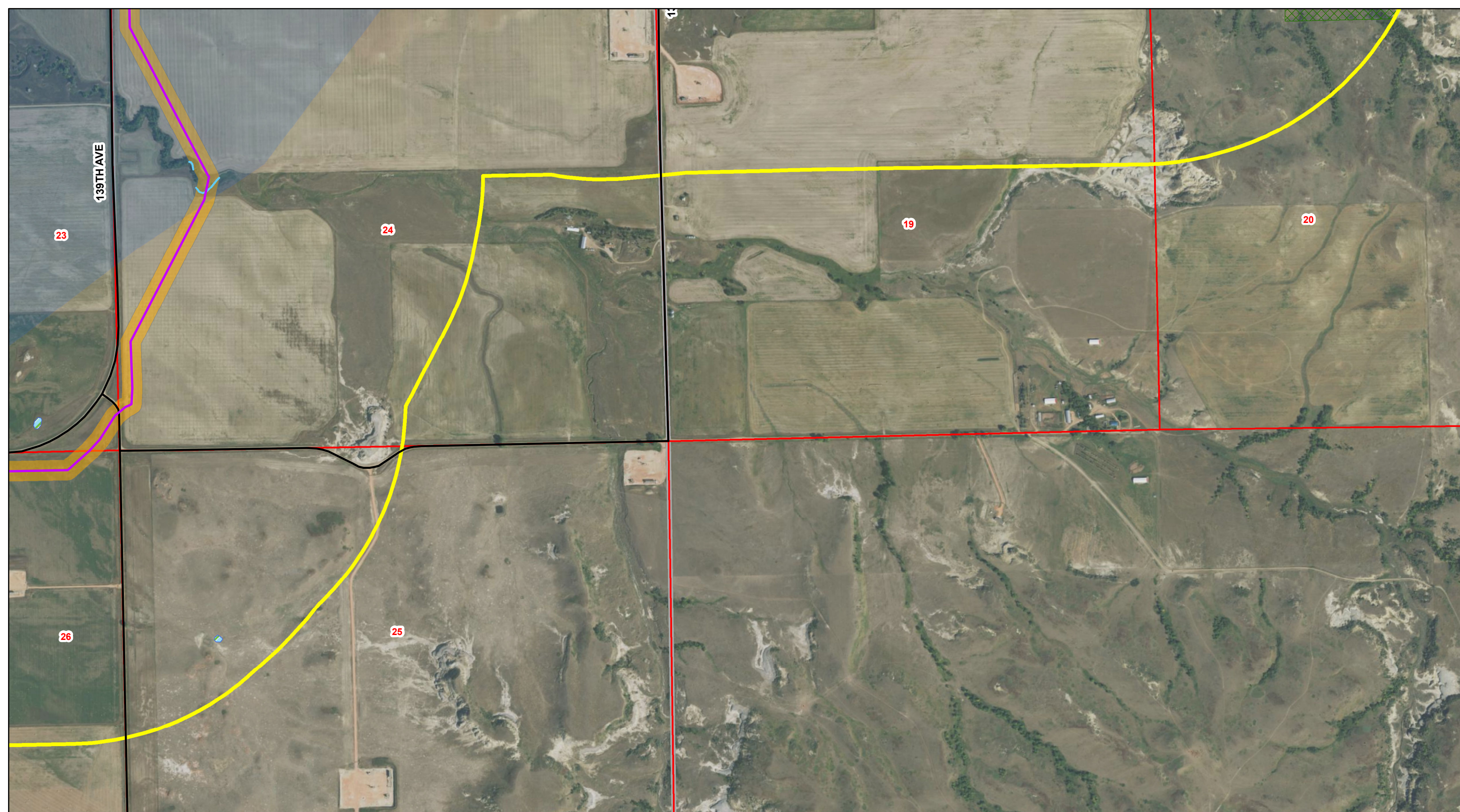
Figure: A.1

0 1,300 2,600 Feet

0 400 800 Meters

Page 4 of 13

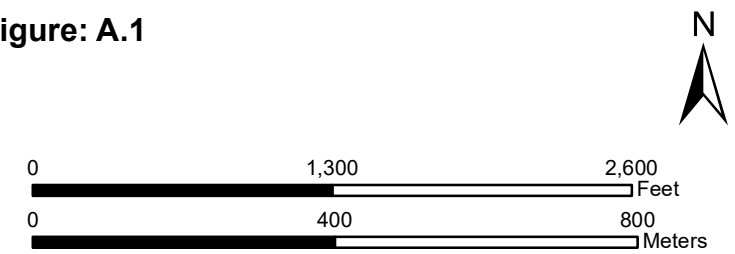
T. 148N, R. 101W and T. 148N, R. 100W
 McKenzie County, North Dakota
 Projection: NAD 1983 UTM Zone13N
 Base Map: 2016 Aerial Imagery
 Source: USDA/FSA - Aerial Photography Field Office



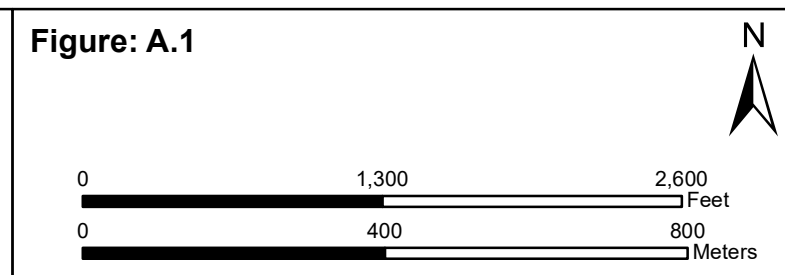
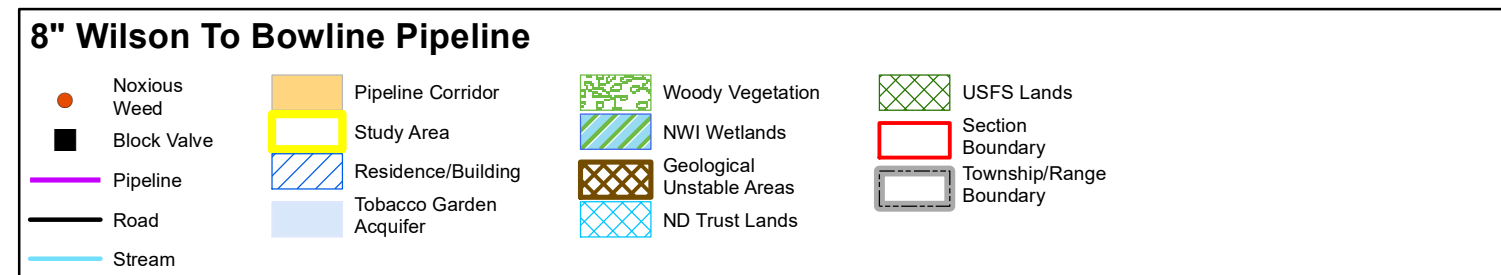
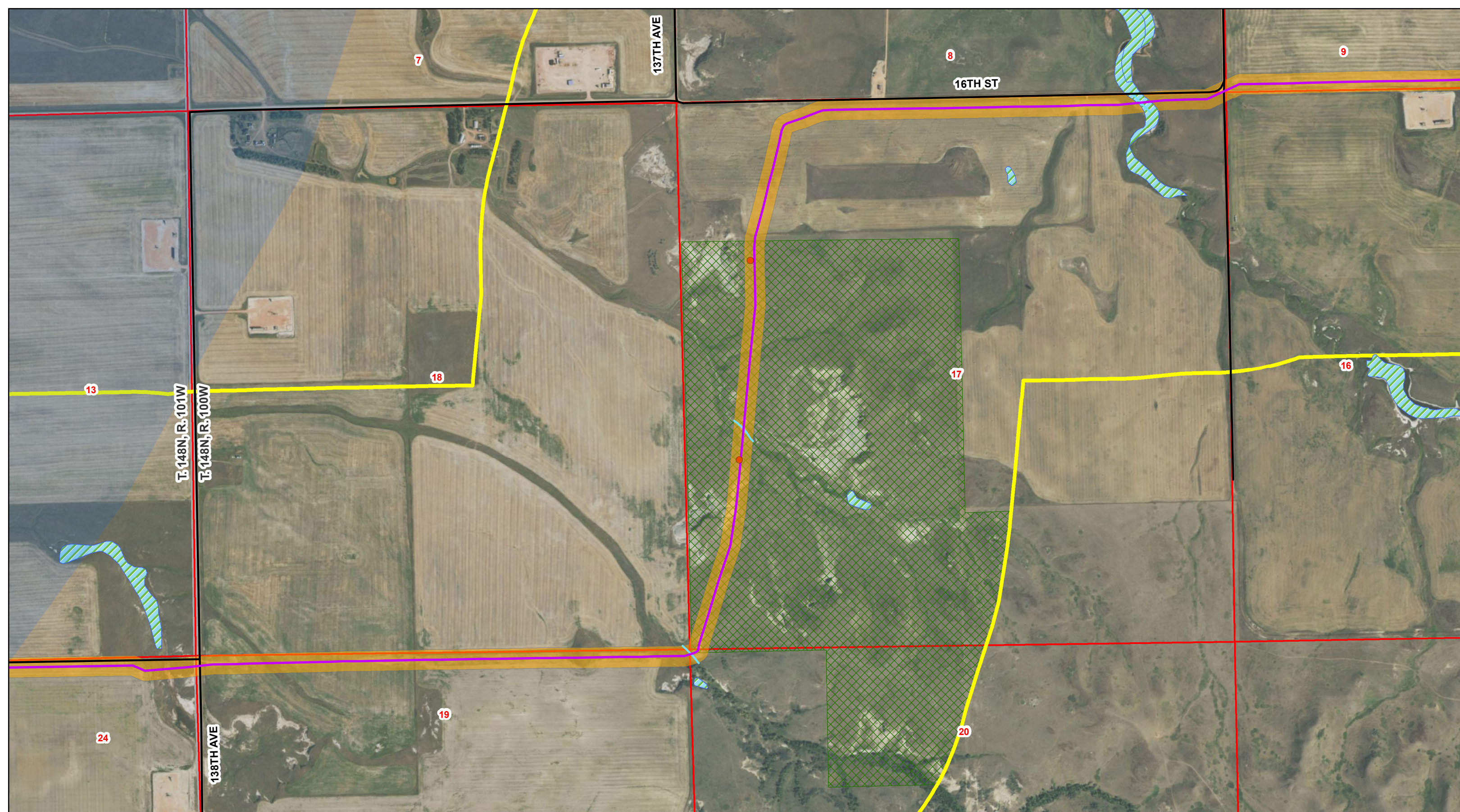
8" Wilson To Bowline Pipeline

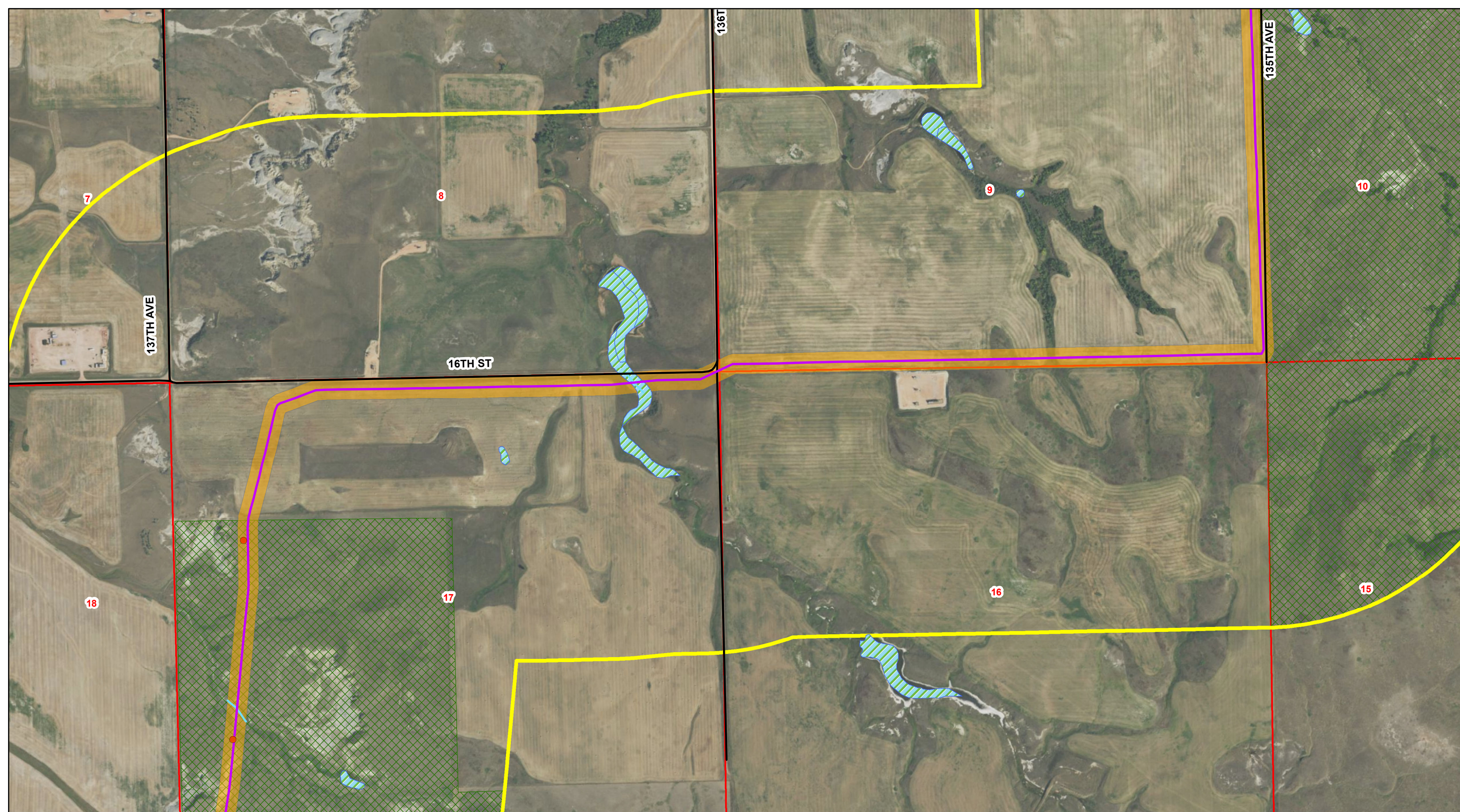
- | | | | |
|--------------|-------------------------|---------------------------|-------------------------|
| Noxious Weed | Pipeline Corridor | Woody Vegetation | USFS Lands |
| Block Valve | Study Area | NWI Wetlands | Section Boundary |
| Pipeline | Residence/Building | Geological Unstable Areas | Township/Range Boundary |
| Road | Tobacco Garden Acquirer | ND Trust Lands | |
| Stream | | | |

Figure: A.1



T. 148N, R. 100W and T. 148N, R. 101W
 McKenzie County, North Dakota
 Projection: NAD 1983 UTM Zone13N
 Base Map: 2016 Aerial Imagery
 Source: USDA/FSA - Aerial Photography Field Office

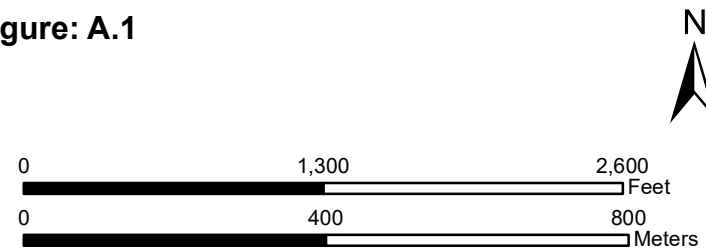


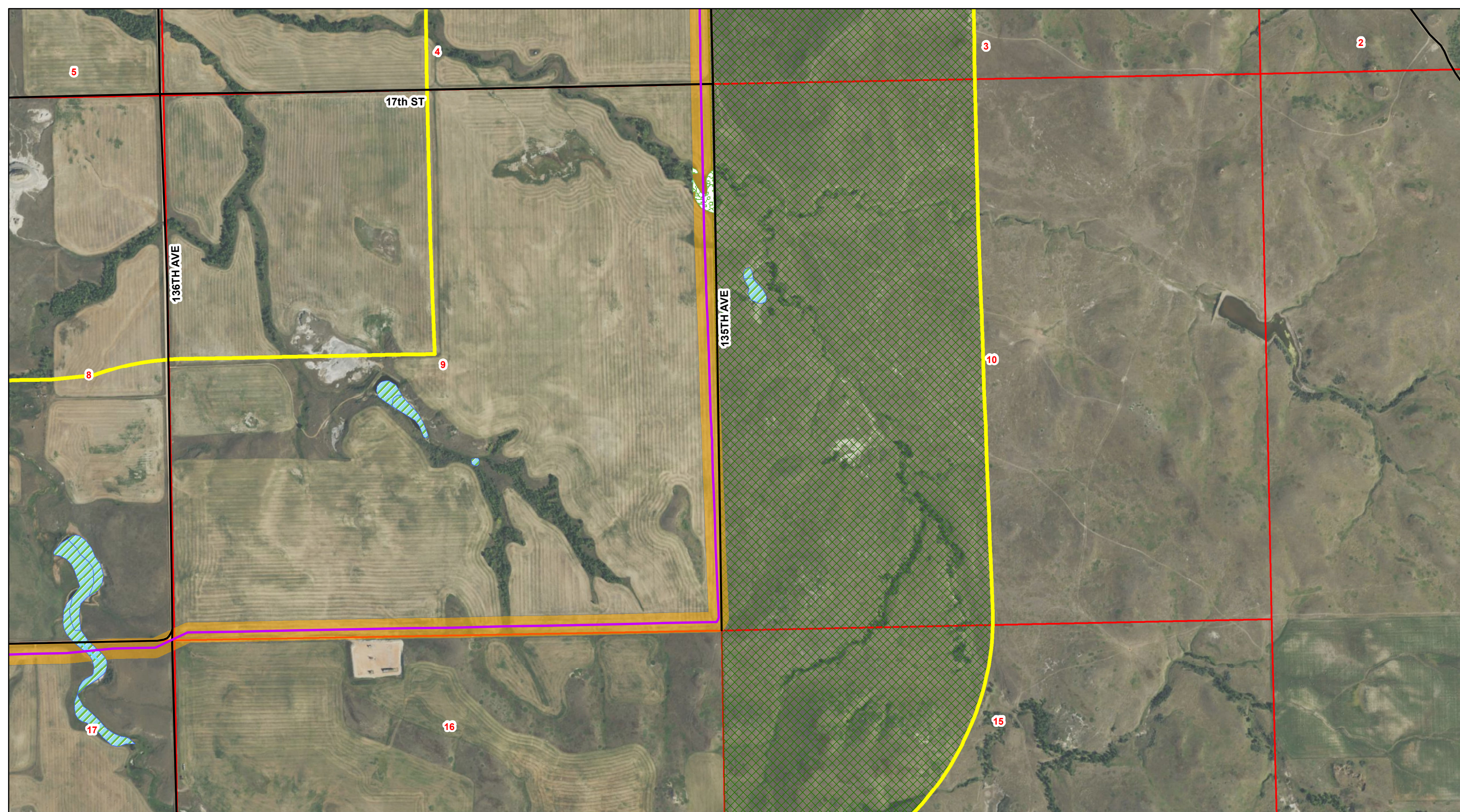


8" Wilson To Bowline Pipeline

- | | | | |
|--------------|-------------------------|---------------------------|-------------------------|
| Noxious Weed | Pipeline Corridor | Woody Vegetation | USFS Lands |
| Block Valve | Study Area | NWI Wetlands | Section Boundary |
| Pipeline | Residence/Building | Geological Unstable Areas | Township/Range Boundary |
| Road | Tobacco Garden Acquirer | ND Trust Lands | |
| Stream | | | |

Figure: A.1

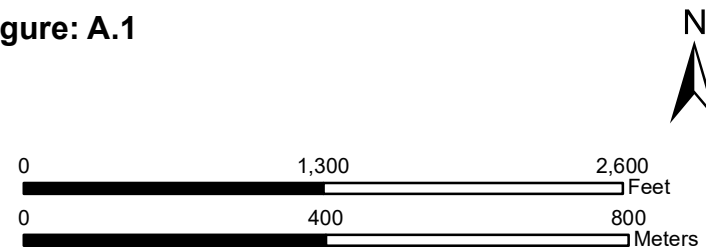


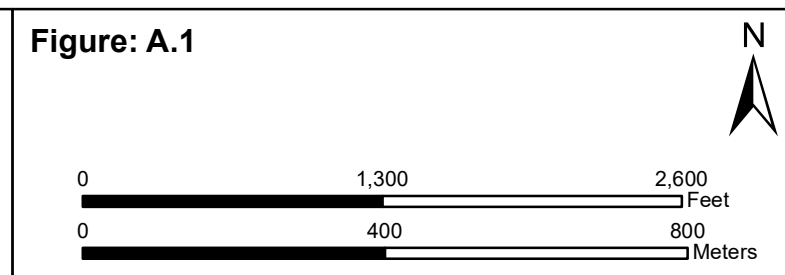
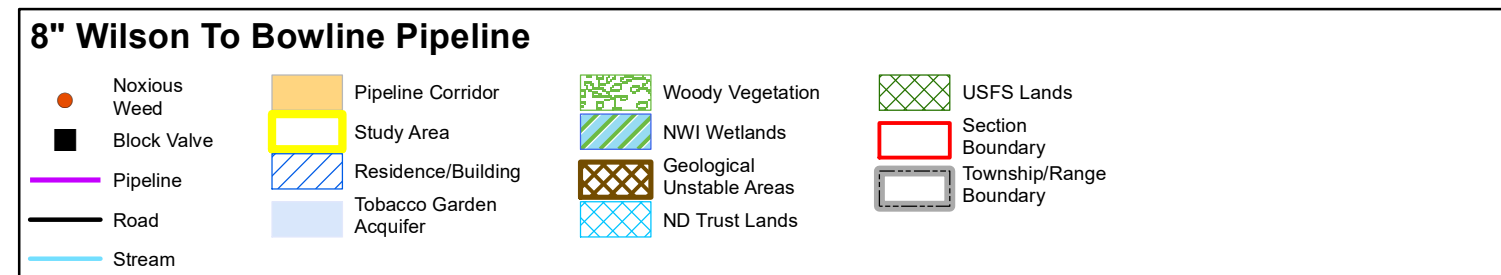
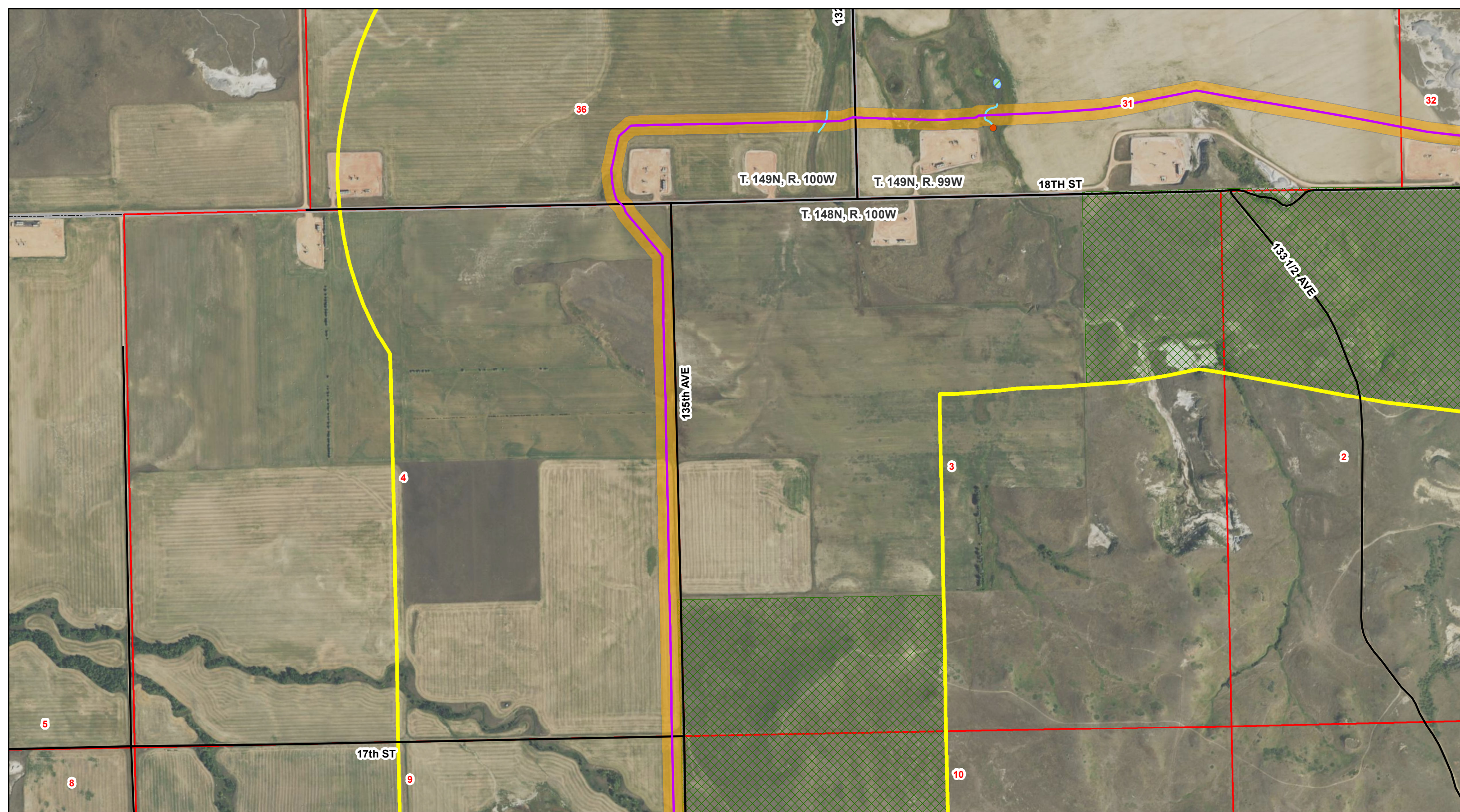


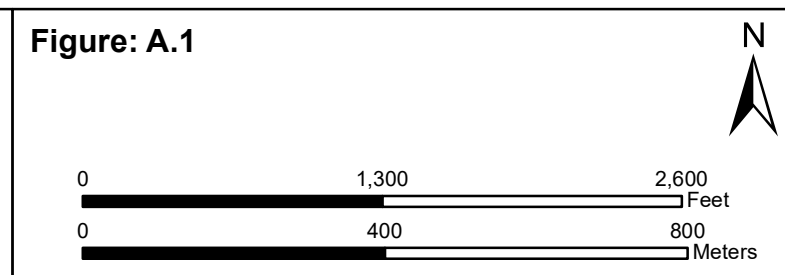
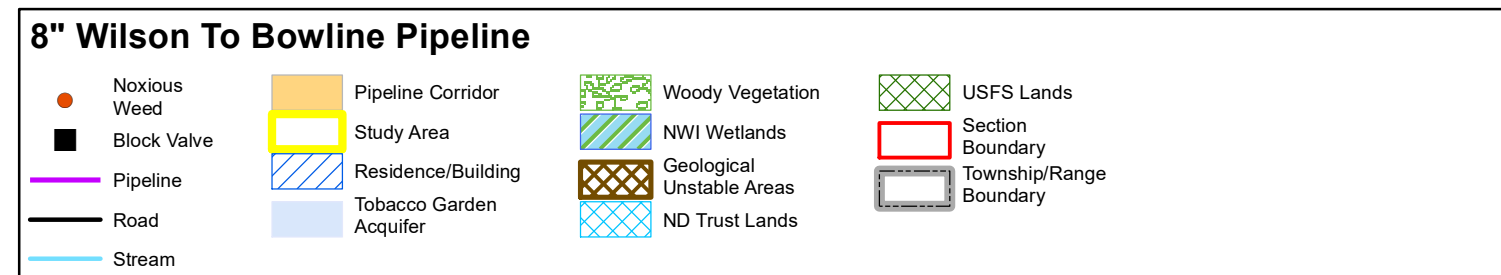
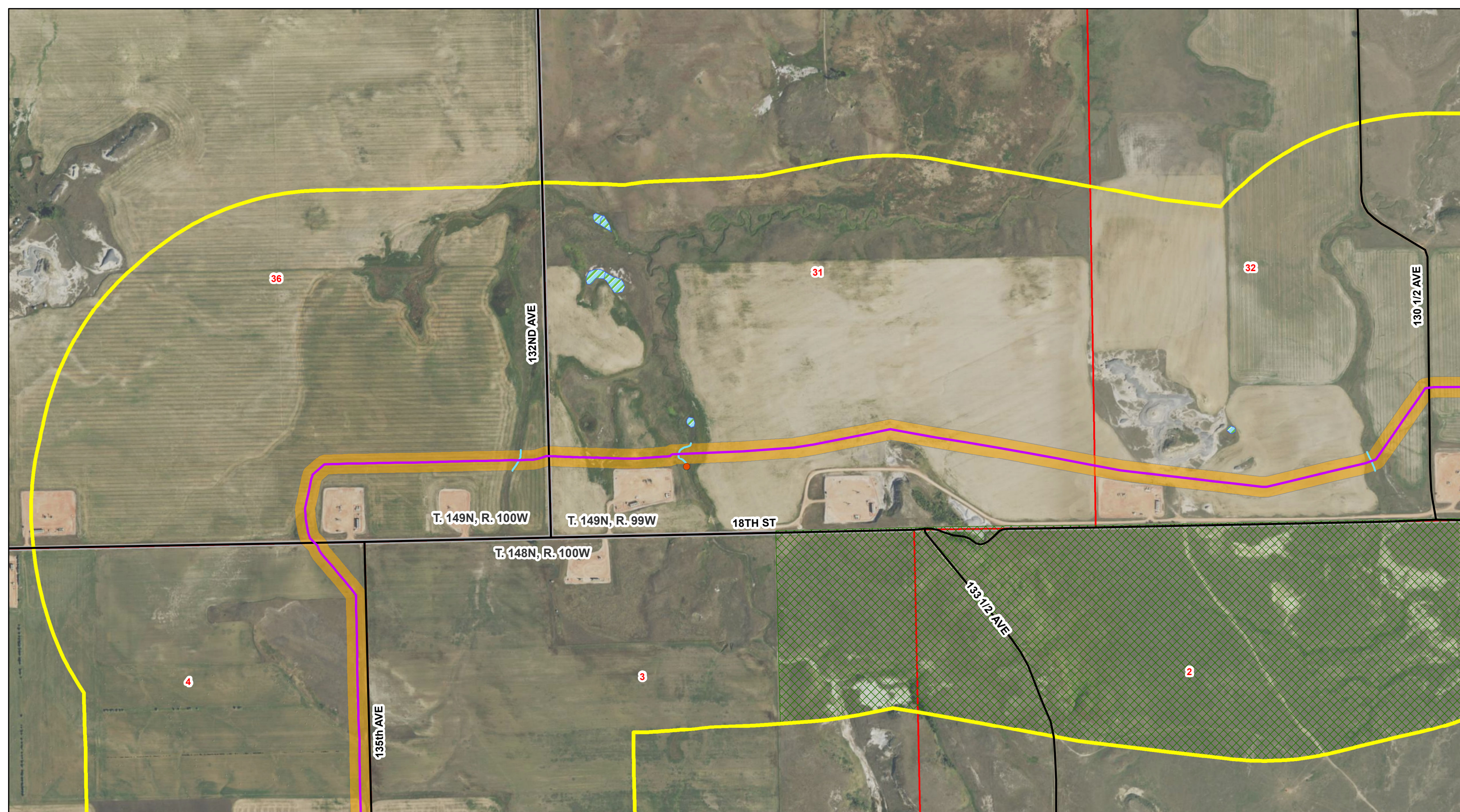
8" Wilson To Bowline Pipeline

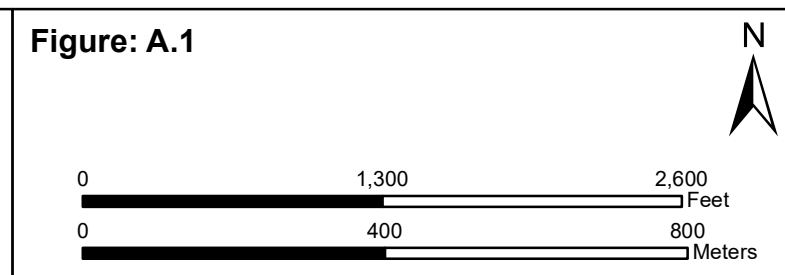
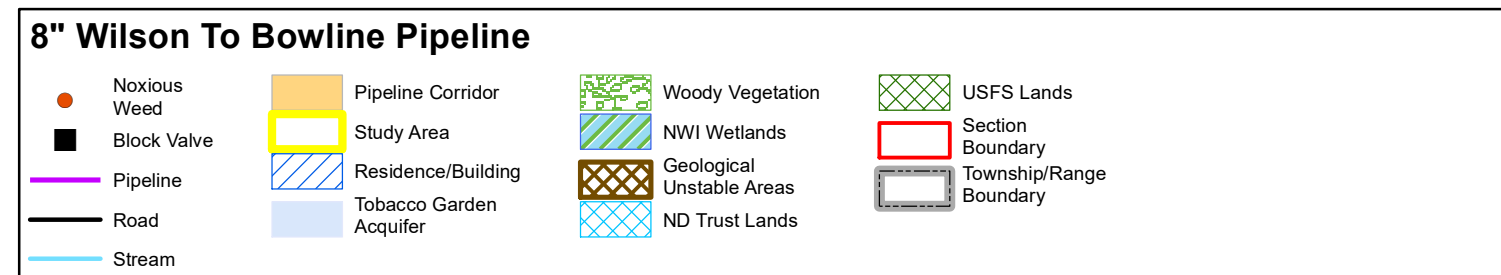
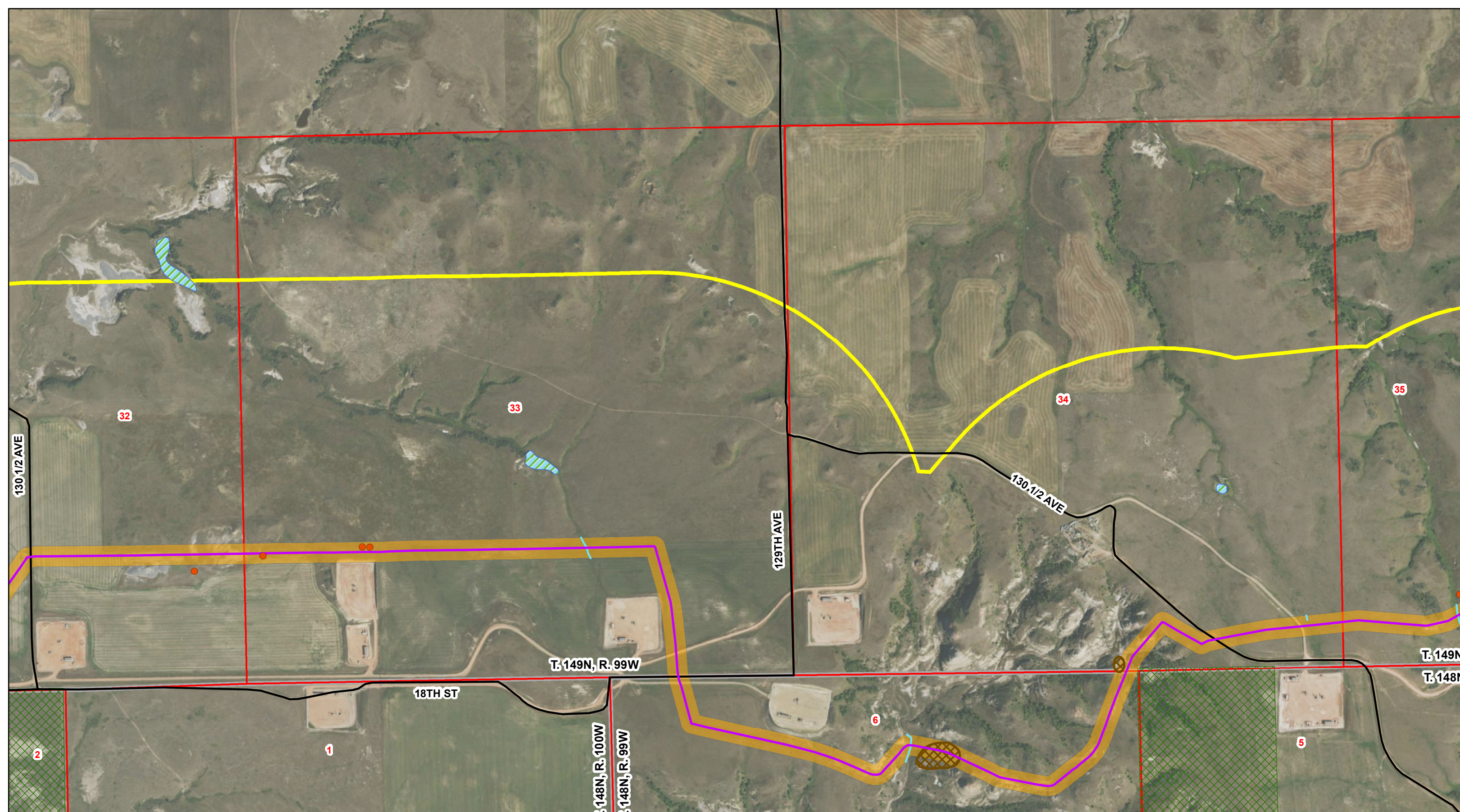
- | | | | |
|--------------|-------------------------|---------------------------|-------------------------|
| Noxious Weed | Pipeline Corridor | Woody Vegetation | USFS Lands |
| Block Valve | Study Area | NWI Wetlands | Section Boundary |
| Pipeline | Residence/Building | Geological Unstable Areas | Township/Range Boundary |
| Road | Tobacco Garden Acquirer | ND Trust Lands | |
| Stream | | | |

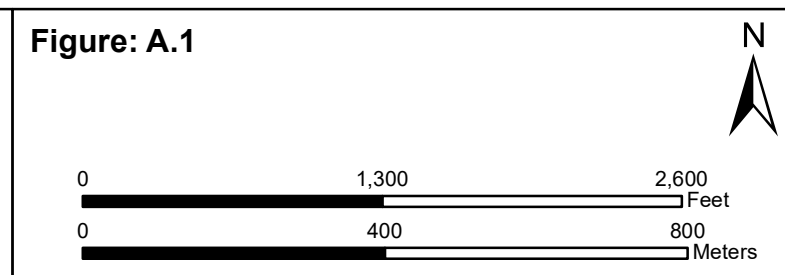
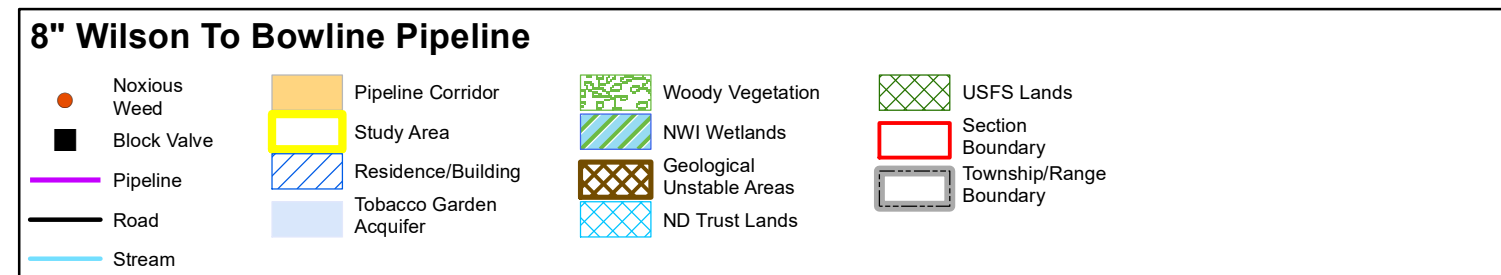
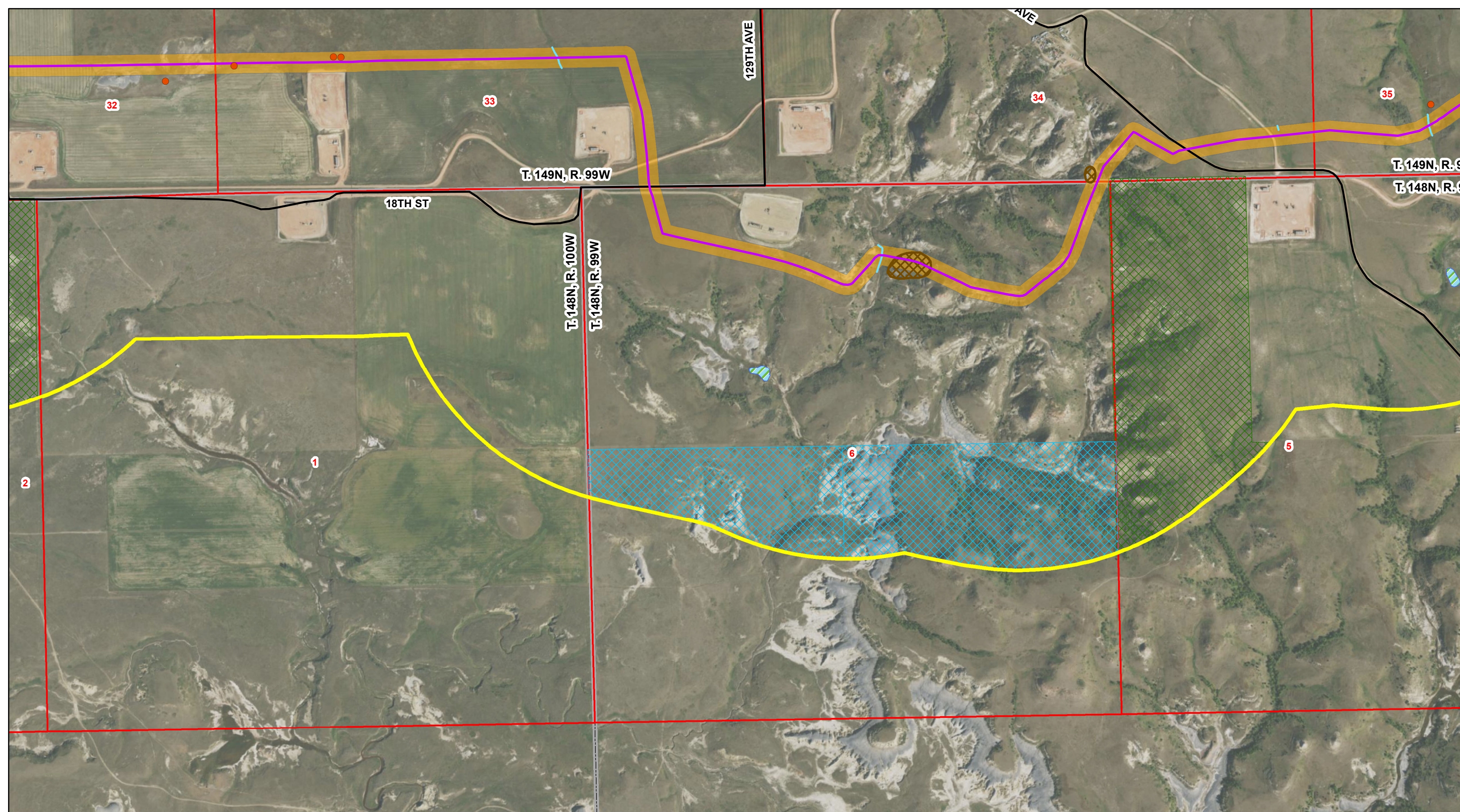
Figure: A.1

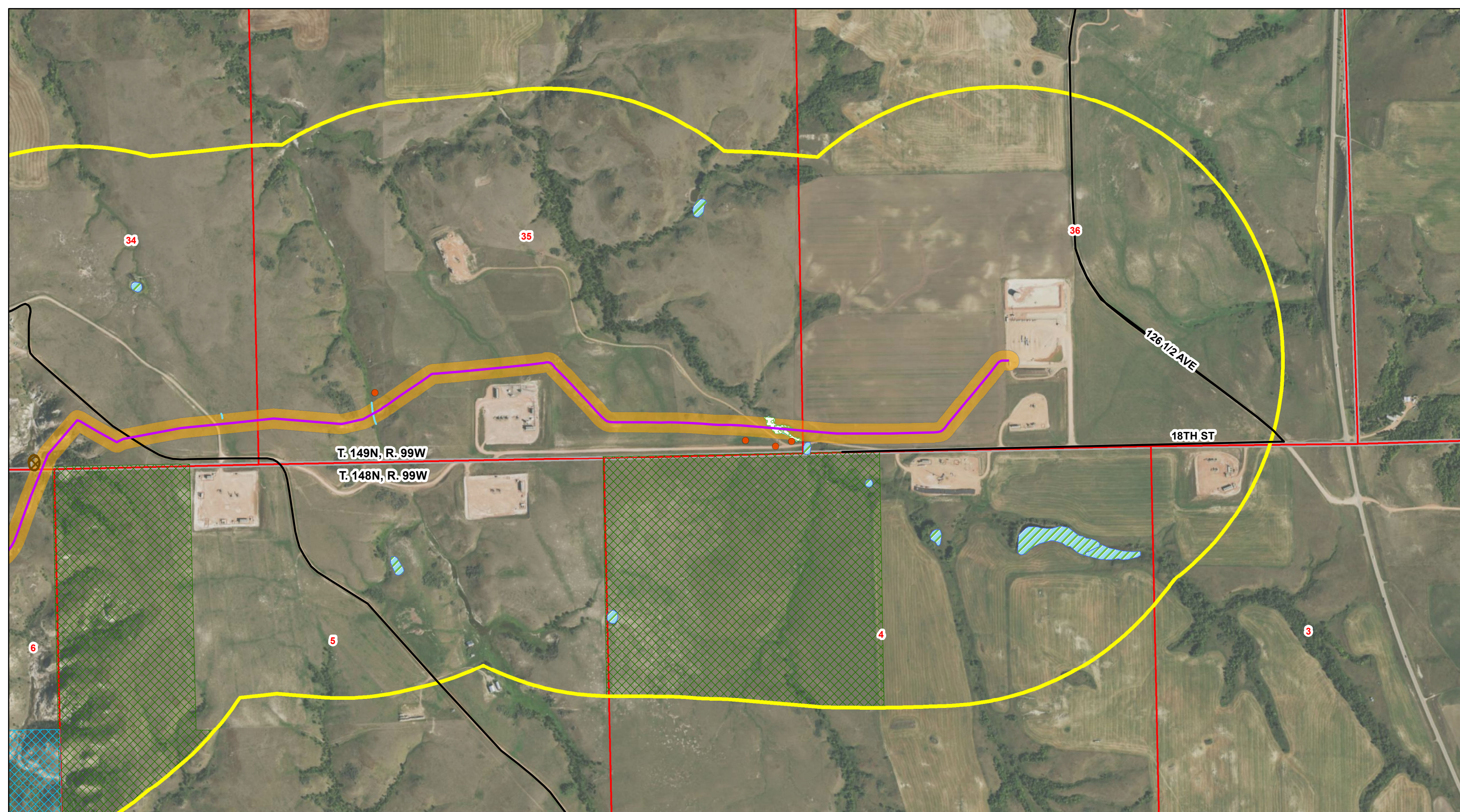








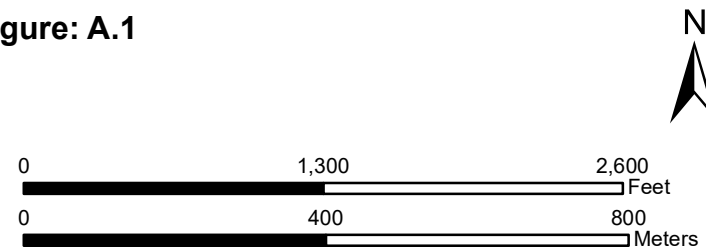




8" Wilson To Bowline Pipeline

- Noxious Weed
- Block Valve
- Pipeline
- Road
- Stream
- Pipeline Corridor
- Study Area
- Residence/Building
- Tobacco Garden Acquirer
- Woody Vegetation
- NWI Wetlands
- Geological Unstable Areas
- ND Trust Lands
- USFS Lands
- Section Boundary
- Township/Range Boundary

Figure: A.1



T. 148N, R. 99W and T. 149N, R. 99W
 McKenzie County, North Dakota
 Projection: NAD 1983 UTM Zone13N
 Base Map: 2016 Aerial Imagery
 Source: USDA/FSA - Aerial Photography Field Office