



Skunk Hill To DPR 6" Pipeline

20 PU-18-405 Filed 03/25/2019 Pages: 9
 Aerial Map Book
 Belle Fourche Pipeline Company

 Proposed 6" Pipeline

 Mapbook Page Layout

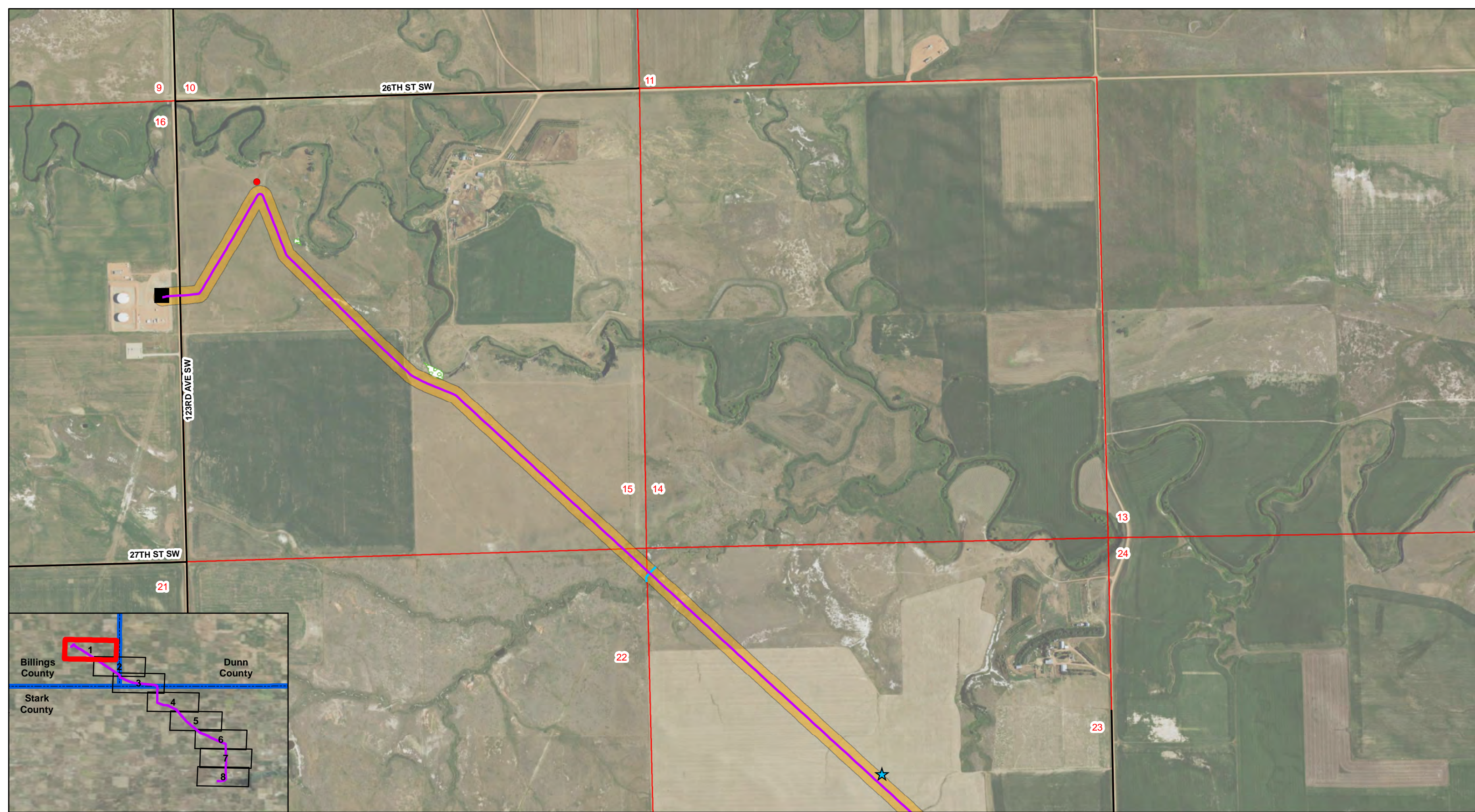
 County Boundary

0 14,000 28,000 Feet

0 4,600 9,200 Meters

Project Location: Billings, Dunn, and Stark Counties, North Dakota
 Projection: NAD 1983 UTM Zone 13N
 Base Map: 2016 Aerial Imagery
 Source: USDA/FSA - Aerial Photography Field Office





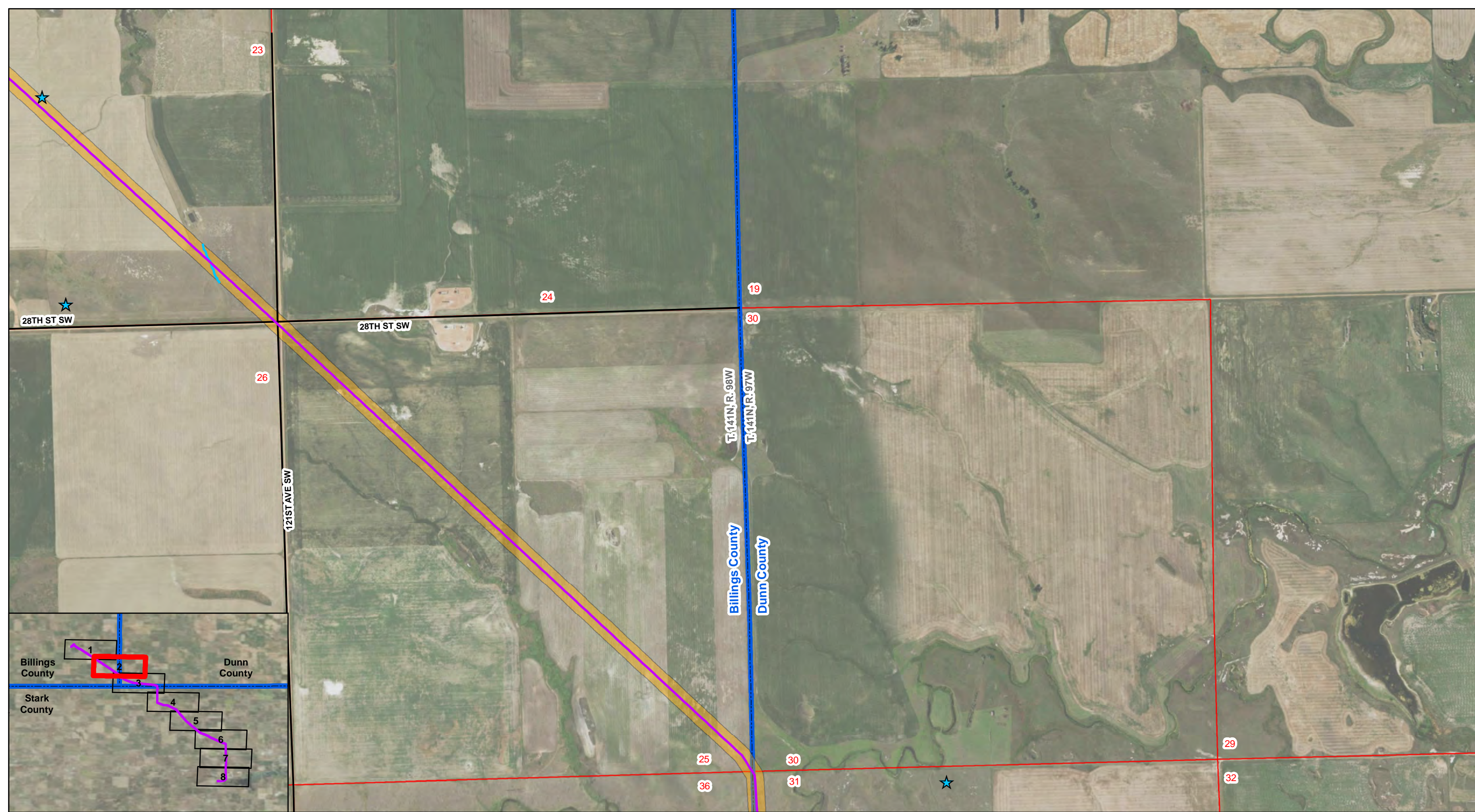
Skunk Hill To DPR 6" Pipeline

Water Wells	Named Streams and Drainages	Woody Vegetation	Section Boundary
Noxious Weeds	Interstate	Residence/Building	Township/Range Boundary
Block Valve	Existing Road	County Boundary	
Proposed 6" Pipeline	Pipeline Corridor		

Figure: A.1

0 1,300 2,600 Feet

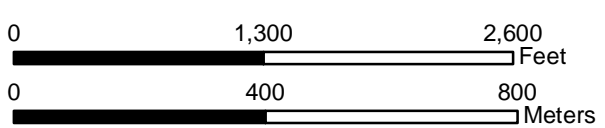
0 400 800 Meters



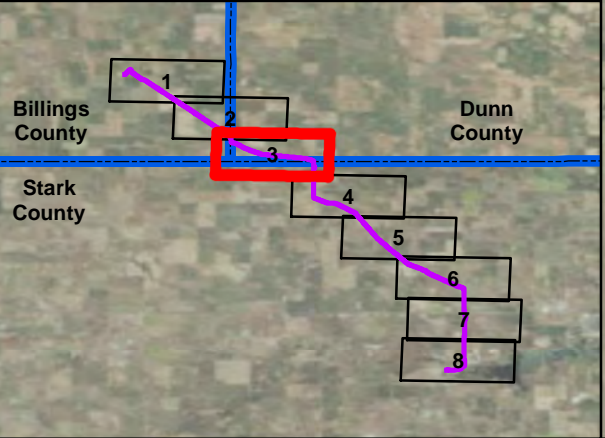
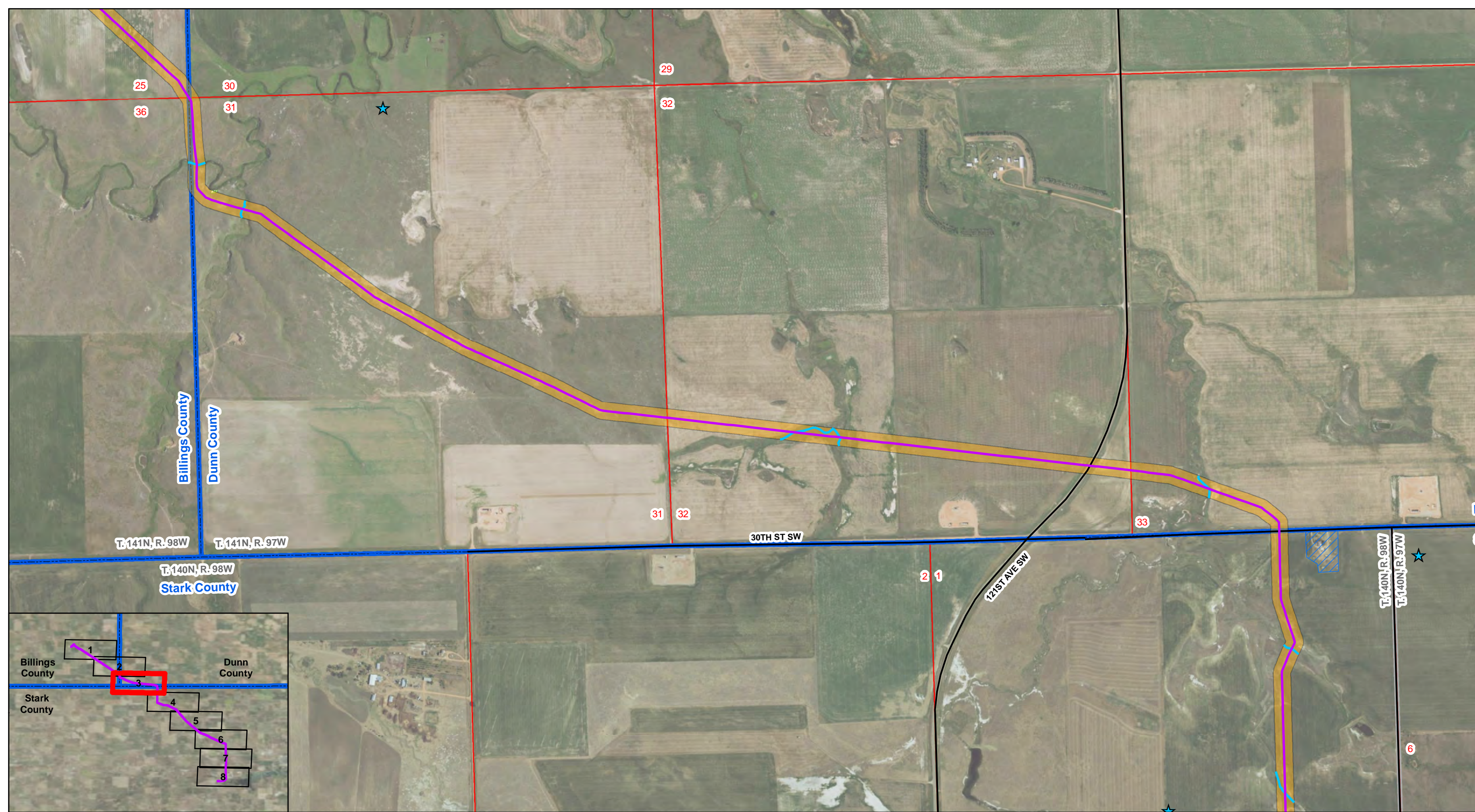
Skunk Hill To DPR 6" Pipeline

- ★ Water Wells
- Noxious Weeds
- Block Valve
- Proposed 6" Pipeline
- Named Streams and Drainages
- Interstate
- Existing Road
- Pipeline Corridor
- ▨ Woody Vegetation
- ▨ Residence/Building
- ▭ County Boundary
- ▭ Section Boundary
- ▭ Township/Range Boundary

Figure: A.1



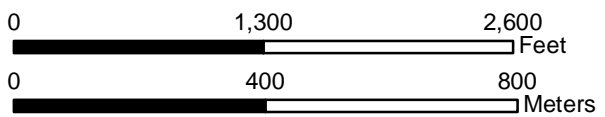
T. 141N, R. 98W and T. 141N, R. 97W
 Billings and Dunn Counties, North Dakota
 Projection: NAD 1983 UTM Zone13N
 Base Map: 2016 Aerial Imagery
 Source: USDA/FSA - Aerial Photography Field Office



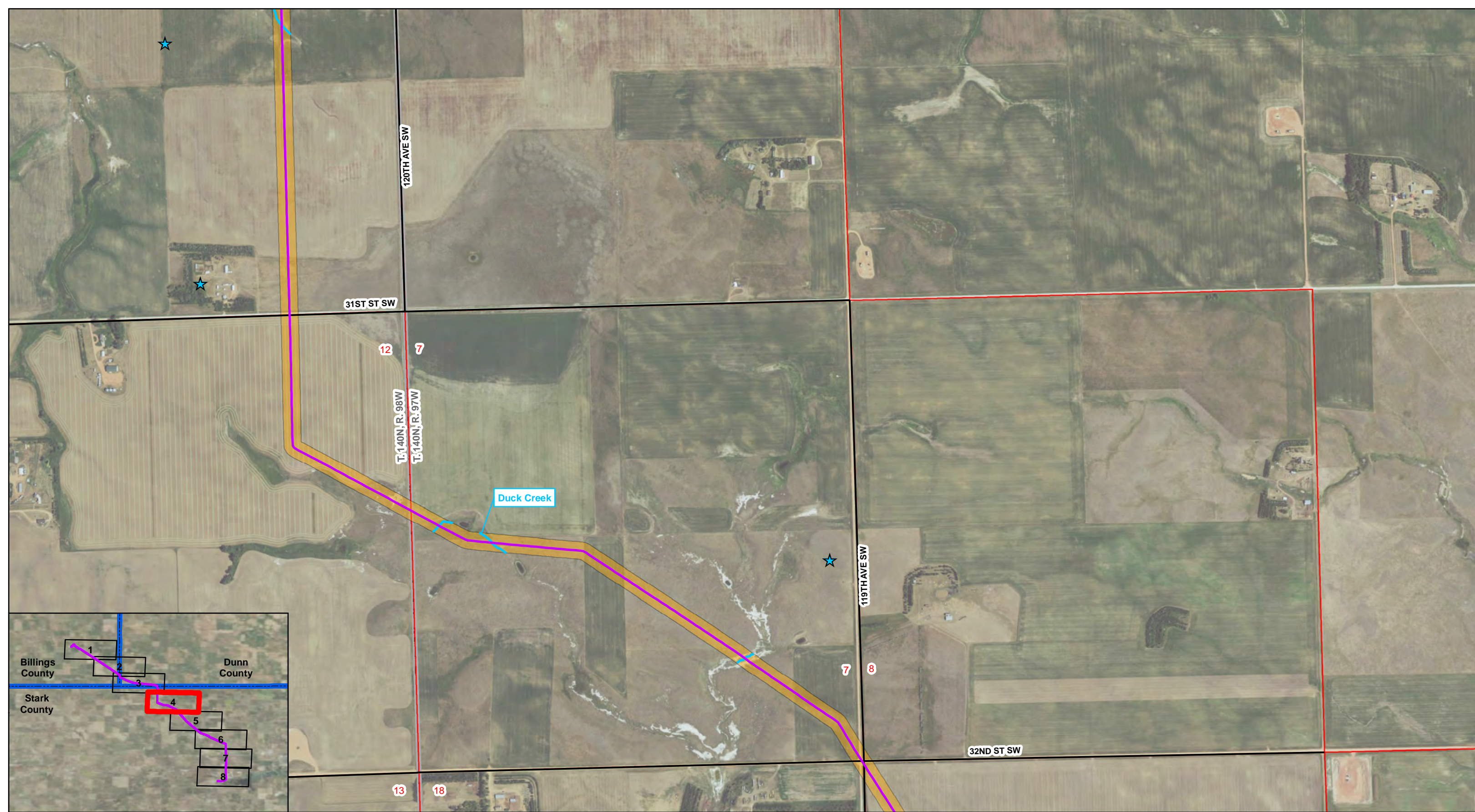
Skunk Hill To DPR 6" Pipeline

- Water Wells
- Noxious Weeds
- Block Valve
- Proposed 6" Pipeline
- Named Streams and Drainages
- Interstate
- Existing Road
- Pipeline Corridor
- Woody Vegetation
- Residence/Building
- County Boundary
- Section Boundary
- Township/Range Boundary

Figure: A.1



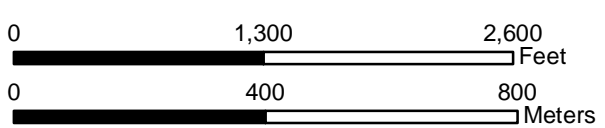
T. 141N, R. 98W, T. 141N, R. 97W, T. 140N, R. 98W, and T. 140N, R. 97W
 Billings, Dunn, and Stark Counties, North Dakota
 Projection: NAD 1983 UTM Zone13N
 Base Map: 2016 Aerial Imagery
 Source: USDA/FSA - Aerial Photography Field Office



Skunk Hill To DPR 6" Pipeline

- | | | | |
|----------------------|-----------------------------|--------------------|-------------------------|
| Water Wells | Named Streams and Drainages | Woody Vegetation | Section Boundary |
| Noxious Weeds | Interstate | Residence/Building | Township/Range Boundary |
| Block Valve | Existing Road | County Boundary | |
| Proposed 6" Pipeline | Pipeline Corridor | | |

Figure: A.1



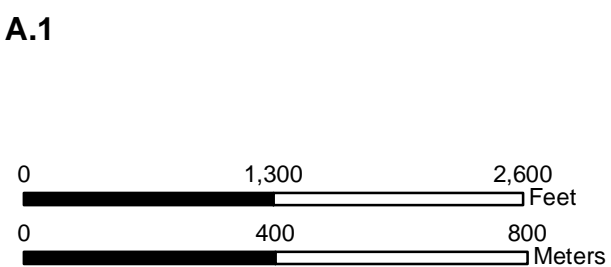
T. 140N, R. 98W and T. 140N, R. 97W
 Stark County, North Dakota
 Projection: NAD 1983 UTM Zone13N
 Base Map: 2016 Aerial Imagery
 Source: USDA/FSA - Aerial Photography Field Office



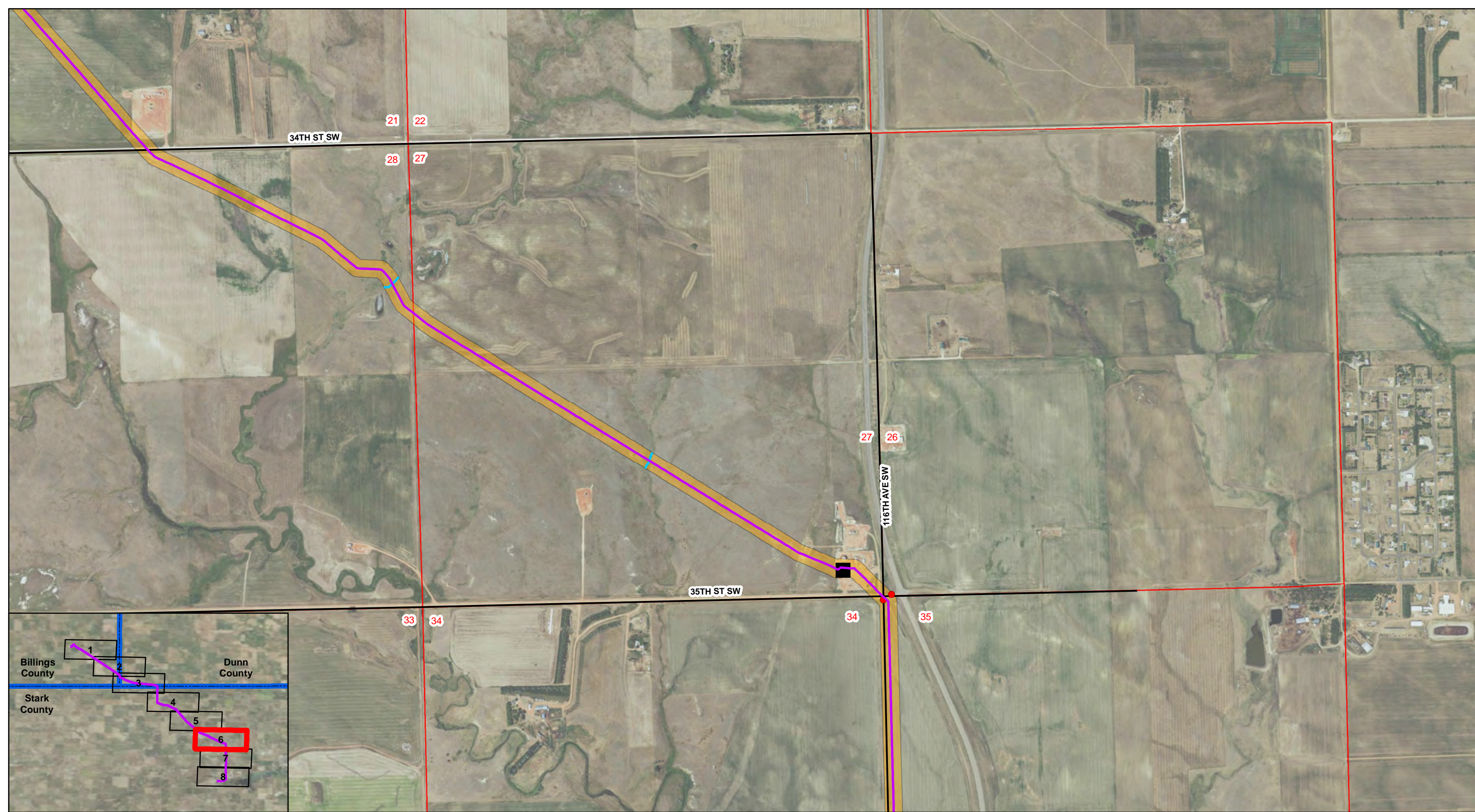
Skunk Hill To DPR 6" Pipeline

- | | | | |
|----------------------|-----------------------------|--------------------|-------------------------|
| Water Wells | Named Streams and Drainages | Woody Vegetation | Section Boundary |
| Noxious Weeds | Interstate | Residence/Building | Township/Range Boundary |
| Block Valve | Existing Road | County Boundary | |
| Proposed 6" Pipeline | Pipeline Corridor | | |

Figure: A.1



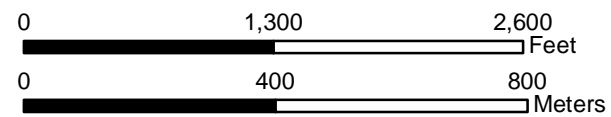
T. 140N, R. 97W
 Stark County, North Dakota
 Projection: NAD 1983 UTM Zone13N
 Base Map: 2016 Aerial Imagery
 Source: USDA/FSA - Aerial Photography Field Office



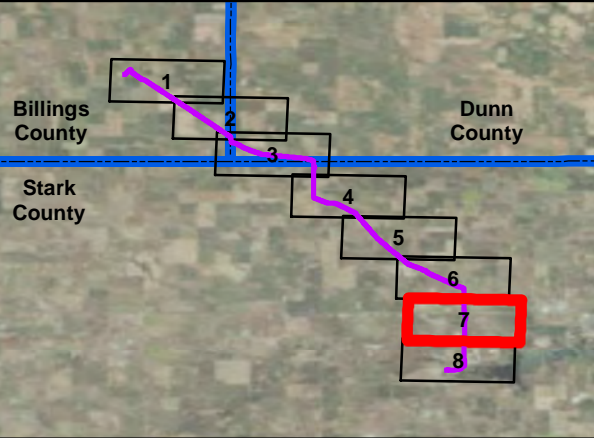
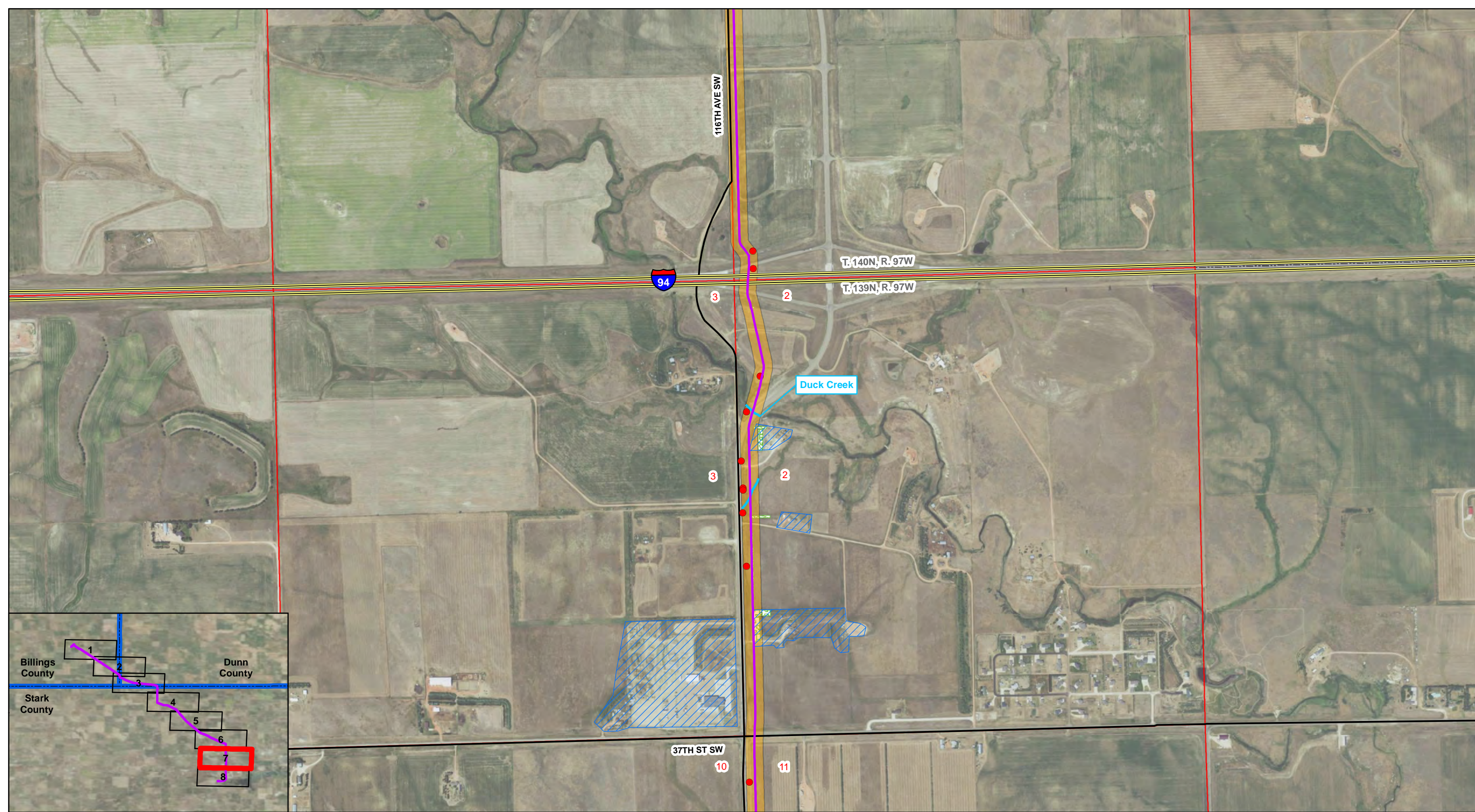
Skunk Hill To DPR 6" Pipeline

- | | | | |
|----------------------|-----------------------------|--------------------|-------------------------|
| Water Wells | Named Streams and Drainages | Woody Vegetation | Section Boundary |
| Noxious Weeds | Interstate | Residence/Building | Township/Range Boundary |
| Block Valve | Existing Road | County Boundary | |
| Proposed 6" Pipeline | Pipeline Corridor | | |

Figure: A.1



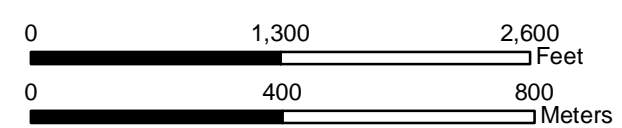
T. 140N, R. 97W
 Stark County, North Dakota
 Projection: NAD 1983 UTM Zone13N
 Base Map: 2016 Aerial Imagery
 Source: USDA/FSA - Aerial Photography Field Office

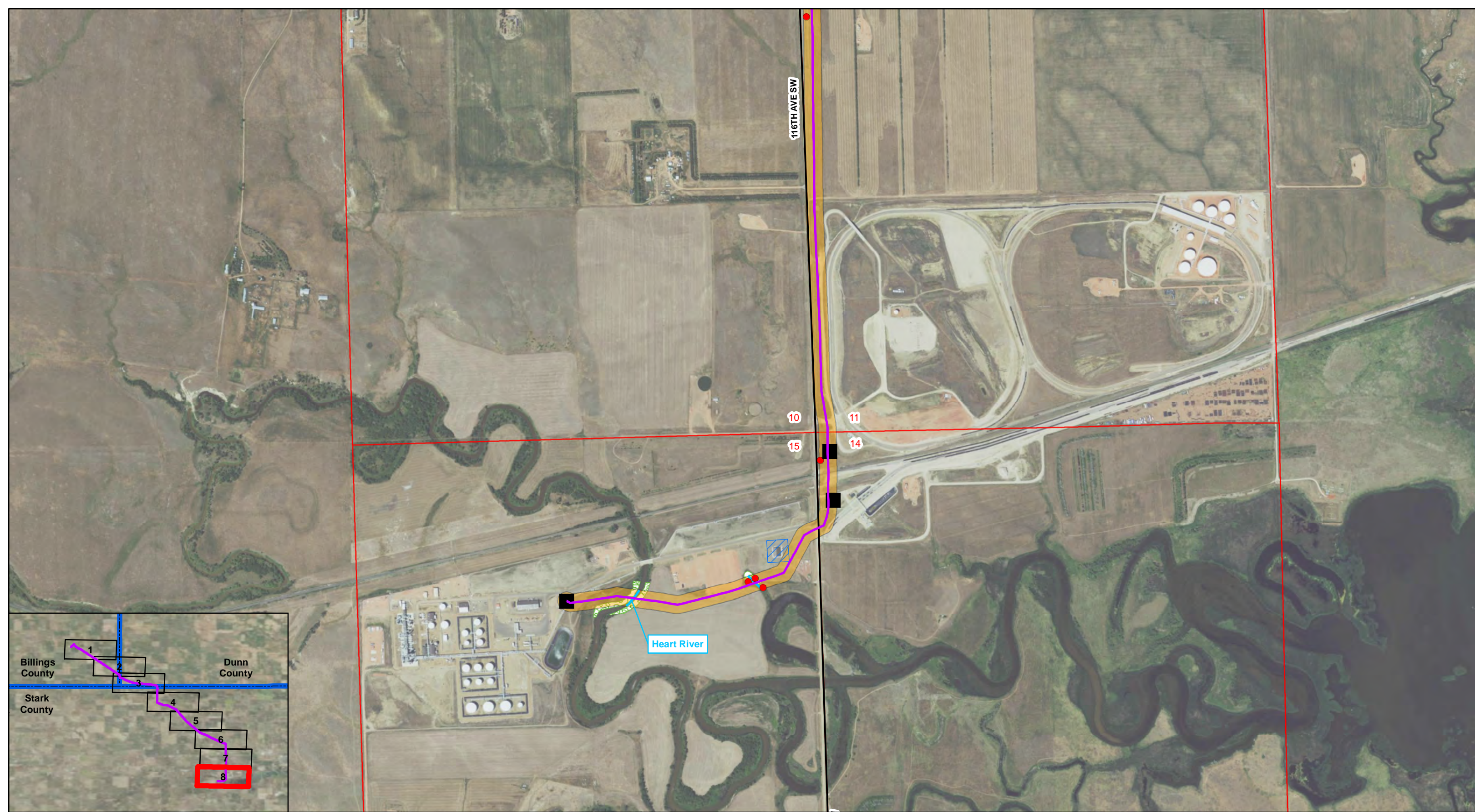


Skunk Hill To DPR 6" Pipeline

- | | | | |
|------------------------|-------------------------------|----------------------|---------------------------|
| ★ Water Wells | — Named Streams and Drainages | ▨ Woody Vegetation | ▭ Section Boundary |
| ● Noxious Weeds | — Interstate | ▨ Residence/Building | ▭ Township/Range Boundary |
| ■ Block Valve | — Existing Road | ▭ County Boundary | |
| — Proposed 6" Pipeline | — Pipeline Corridor | | |

Figure: A.1

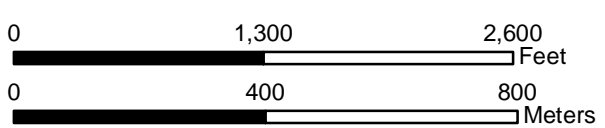




Skunk Hill To DPR 6" Pipeline

- | | | | |
|----------------------|-----------------------------|--------------------|-------------------------|
| Water Wells | Named Streams and Drainages | Woody Vegetation | Section Boundary |
| Noxious Weeds | Interstate | Residence/Building | Township/Range Boundary |
| Block Valve | Existing Road | County Boundary | |
| Proposed 6" Pipeline | Pipeline Corridor | | |

Figure: A.1



T. 139N, R. 97W
 Stark County, North Dakota
 Projection: NAD 1983 UTM Zone13N
 Base Map: 2016 Aerial Imagery
 Source: USDA/FSA - Aerial Photography Field Office