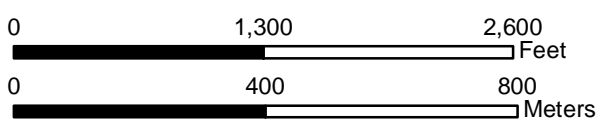


21 PU-18-405 Filed 03/25/2019 Pages: 8  
 Topographic Map Book  
 Belle Fourche Pipeline Company

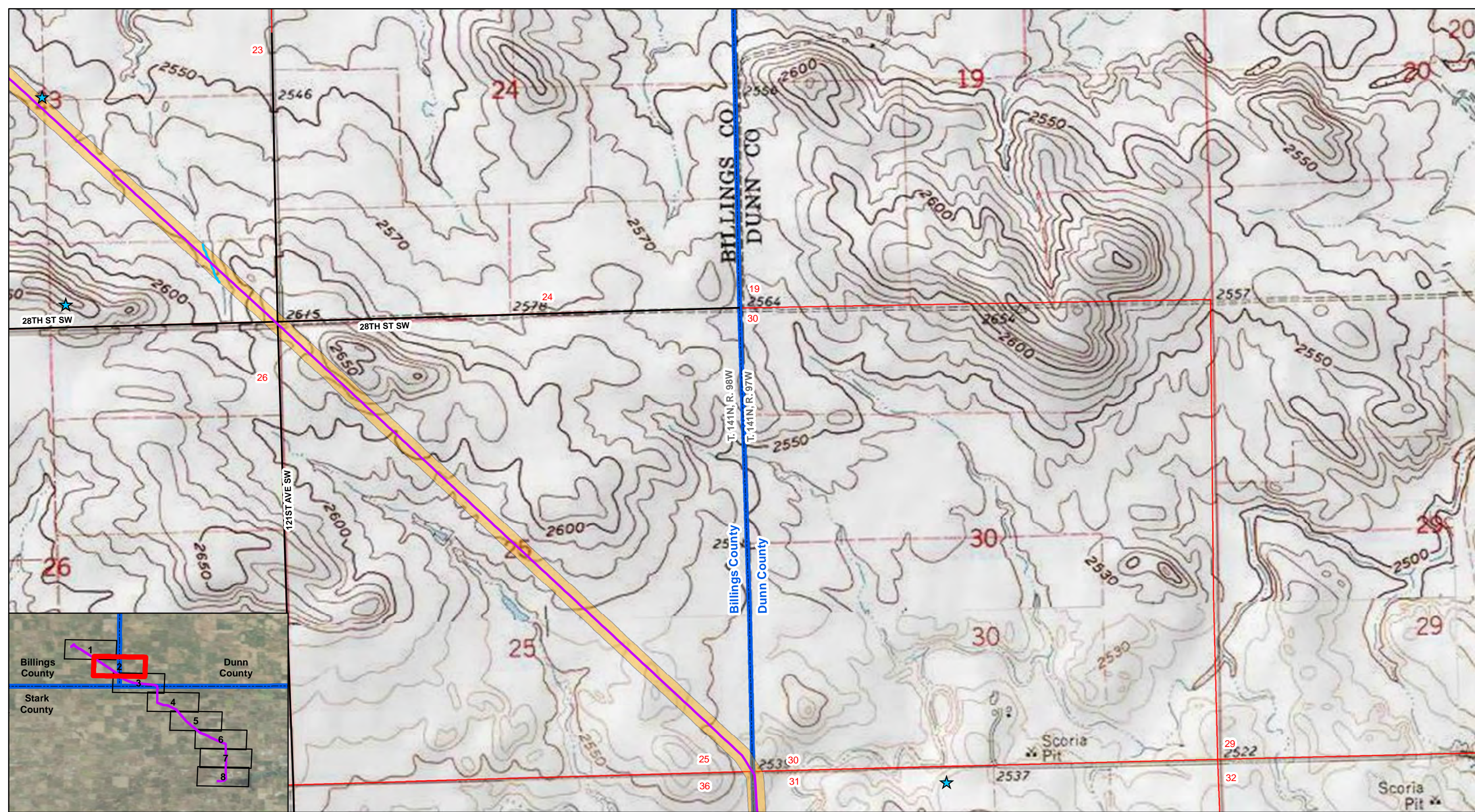
### Skunk Hill To DPR 6" Pipeline

- |                      |                             |                    |                         |
|----------------------|-----------------------------|--------------------|-------------------------|
| Water Wells          | Named Streams and Drainages | Woody Vegetation   | Section Boundary        |
| Noxious Weeds        | Interstate                  | Residence/Building | Township/Range Boundary |
| Block Valve          | Existing Road               | County Boundary    |                         |
| Proposed 6" Pipeline | Pipeline Corridor           |                    |                         |

Figure: A.2



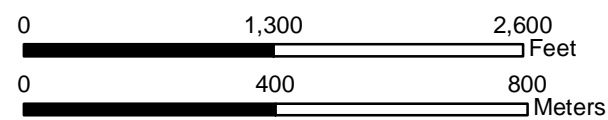
T. 141N, R. 98W  
 Billings County, North Dakota  
 Projection: NAD 1983 UTM Zone13N  
 Base Map: 7.5' USGS Topographic Map  
 Source: esri map services



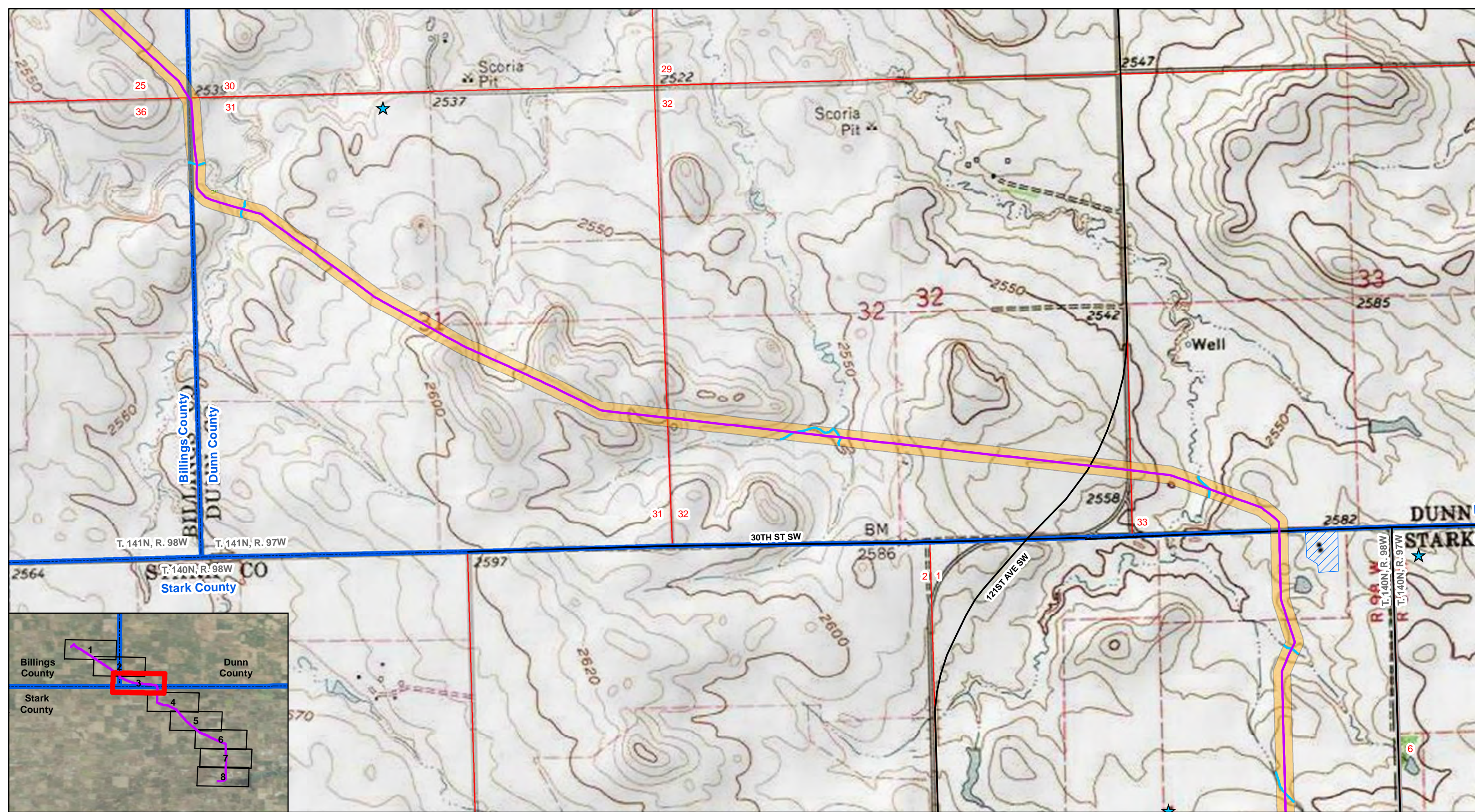
### Skunk Hill To DPR 6" Pipeline

- |                      |                             |                    |                         |
|----------------------|-----------------------------|--------------------|-------------------------|
| Water Wells          | Named Streams and Drainages | Woody Vegetation   | Section Boundary        |
| Noxious Weeds        | Interstate                  | Residence/Building | Township/Range Boundary |
| Block Valve          | Existing Road               | County Boundary    |                         |
| Proposed 6" Pipeline | Pipeline Corridor           |                    |                         |

Figure: A.2



T. 141N, R. 98W and T. 141N, R. 97W  
 Billings and Dunn Counties, North Dakota  
 Projection: NAD 1983 UTM Zone13N  
 Base Map: 7.5' USGS Topographic Map  
 Source: esri map services



### Skunk Hill To DPR 6" Pipeline







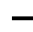






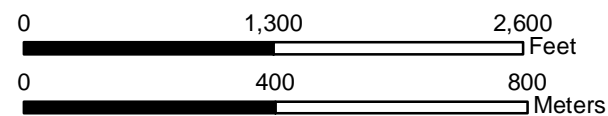
-  Water Wells
-  Noxious Weeds
-  Block Valve
-  Proposed 6" Pipeline
-  Named Streams and Drainages
-  Interstate
-  Existing Road
-  Pipeline Corridor
-  Woody Vegetation
-  Residence/Building
-  County Boundary
-  Section Boundary
-  Township/Range Boundary

Figure: A.2



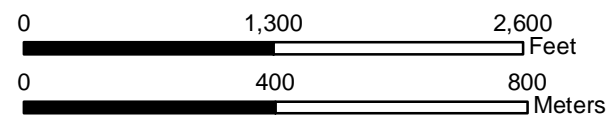
T. 141N, R. 98W, T. 141N, R. 97W, T. 140N, R. 98W, and T. 140N, R. 97W  
 Billings, Dunn, and Stark Counties, North Dakota  
 Projection: NAD 1983 UTM Zone13N  
 Base Map: 7.5' USGS Topographic Map  
 Source: esri map services



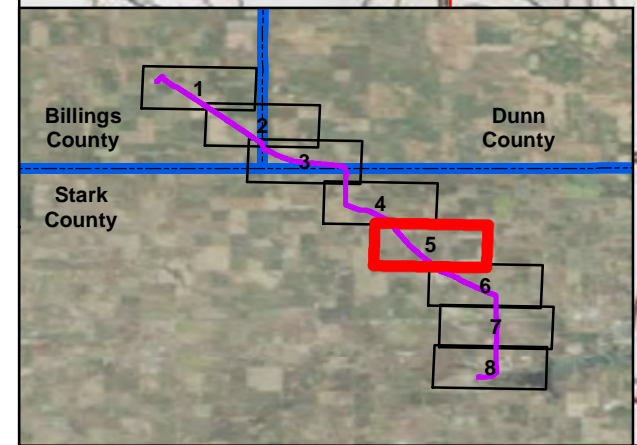
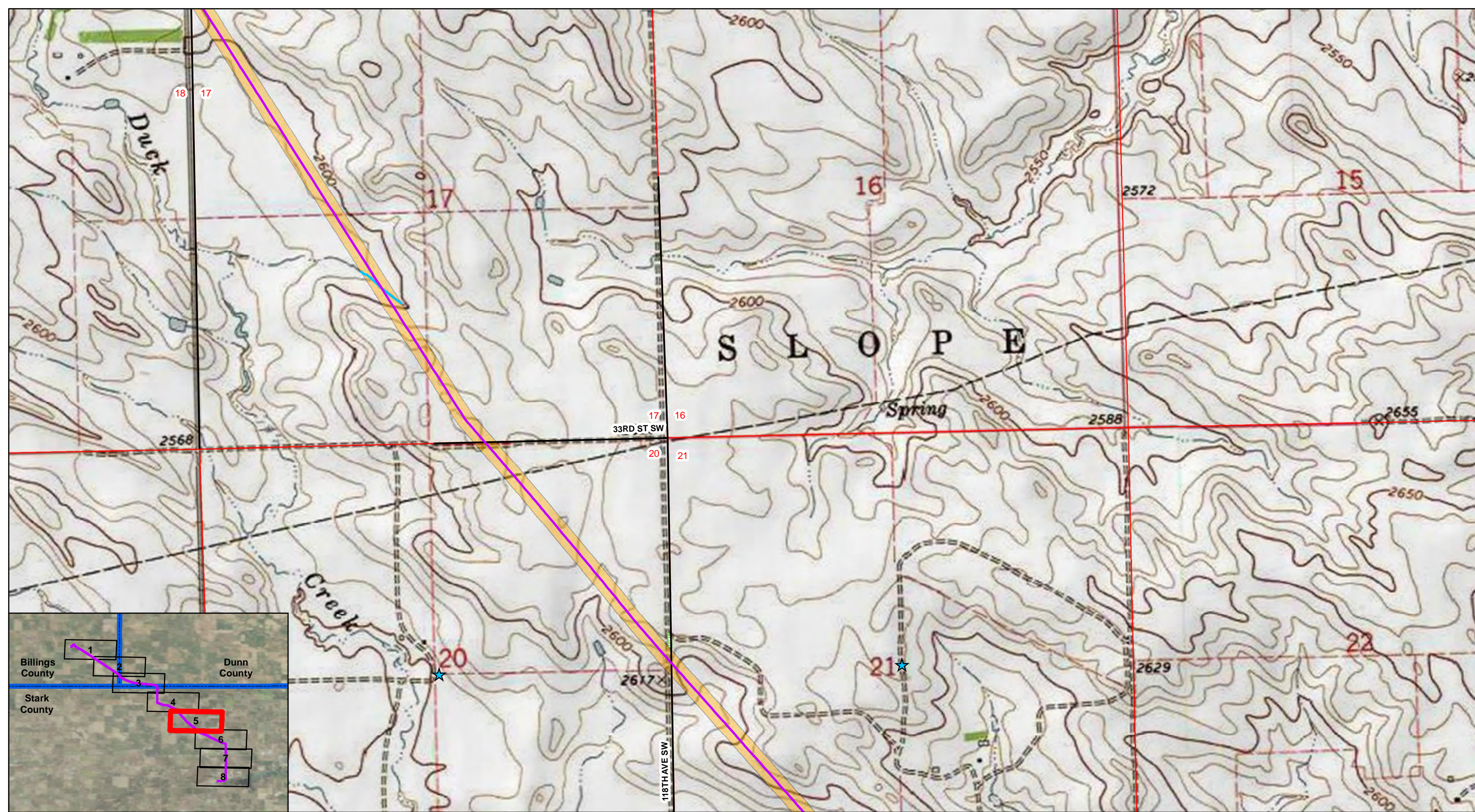
### Skunk Hill To DPR 6" Pipeline

- ★ Water Wells
- Noxious Weeds
- Block Valve
- Named Streams and Drainages
- Interstate
- Existing Road
- Proposed 6" Pipeline
- Woody Vegetation
- Residence/Building
- County Boundary
- Section Boundary
- Township/Range Boundary

Figure: A.2



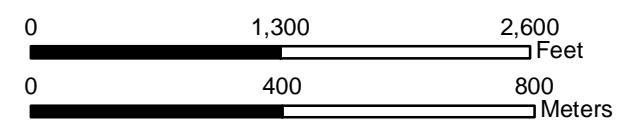
T. 140N, R. 98W and T. 140N, R. 97W  
 Stark County, North Dakota  
 Projection: NAD 1983 UTM Zone13N  
 Base Map: 7.5' USGS Topographic Map  
 Source: esri map services



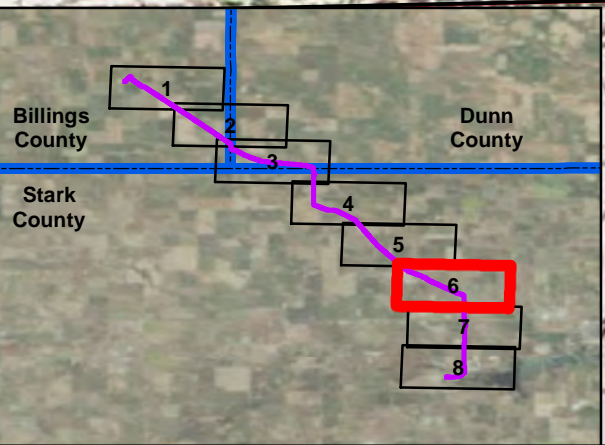
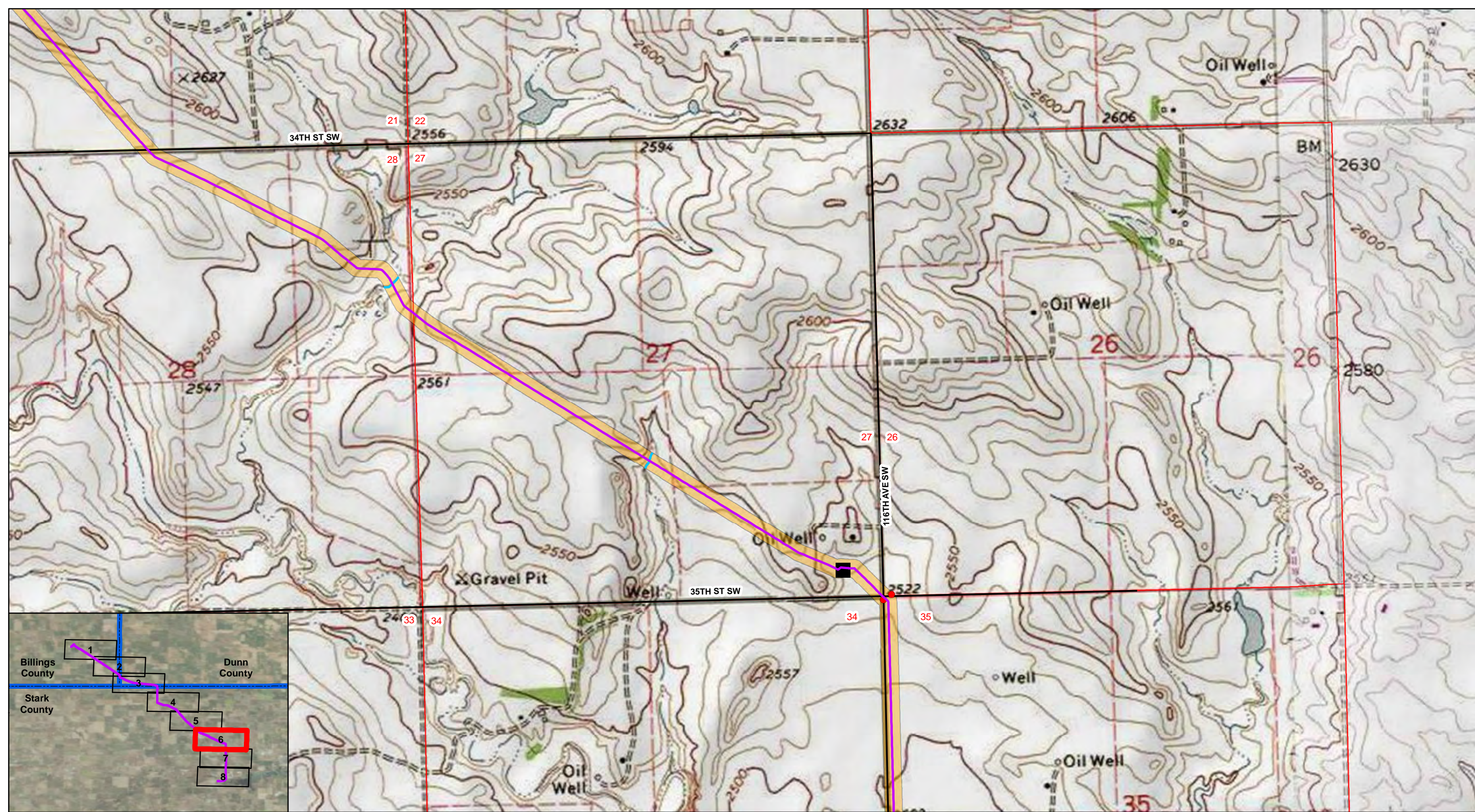
### Skunk Hill To DPR 6" Pipeline

- |                      |                             |                    |                         |
|----------------------|-----------------------------|--------------------|-------------------------|
| Water Wells          | Named Streams and Drainages | Woody Vegetation   | Section Boundary        |
| Noxious Weeds        | Interstate                  | Residence/Building | Township/Range Boundary |
| Block Valve          | Existing Road               | County Boundary    |                         |
| Proposed 6" Pipeline | Pipeline Corridor           |                    |                         |

Figure: A.2



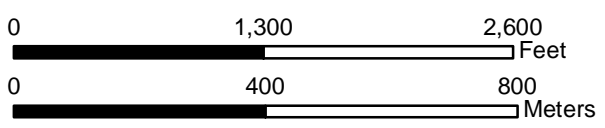
T. 140N, R. 97W  
 Stark County, North Dakota  
 Projection: NAD 1983 UTM Zone13N  
 Base Map: 7.5' USGS Topographic Map  
 Source: esri map services



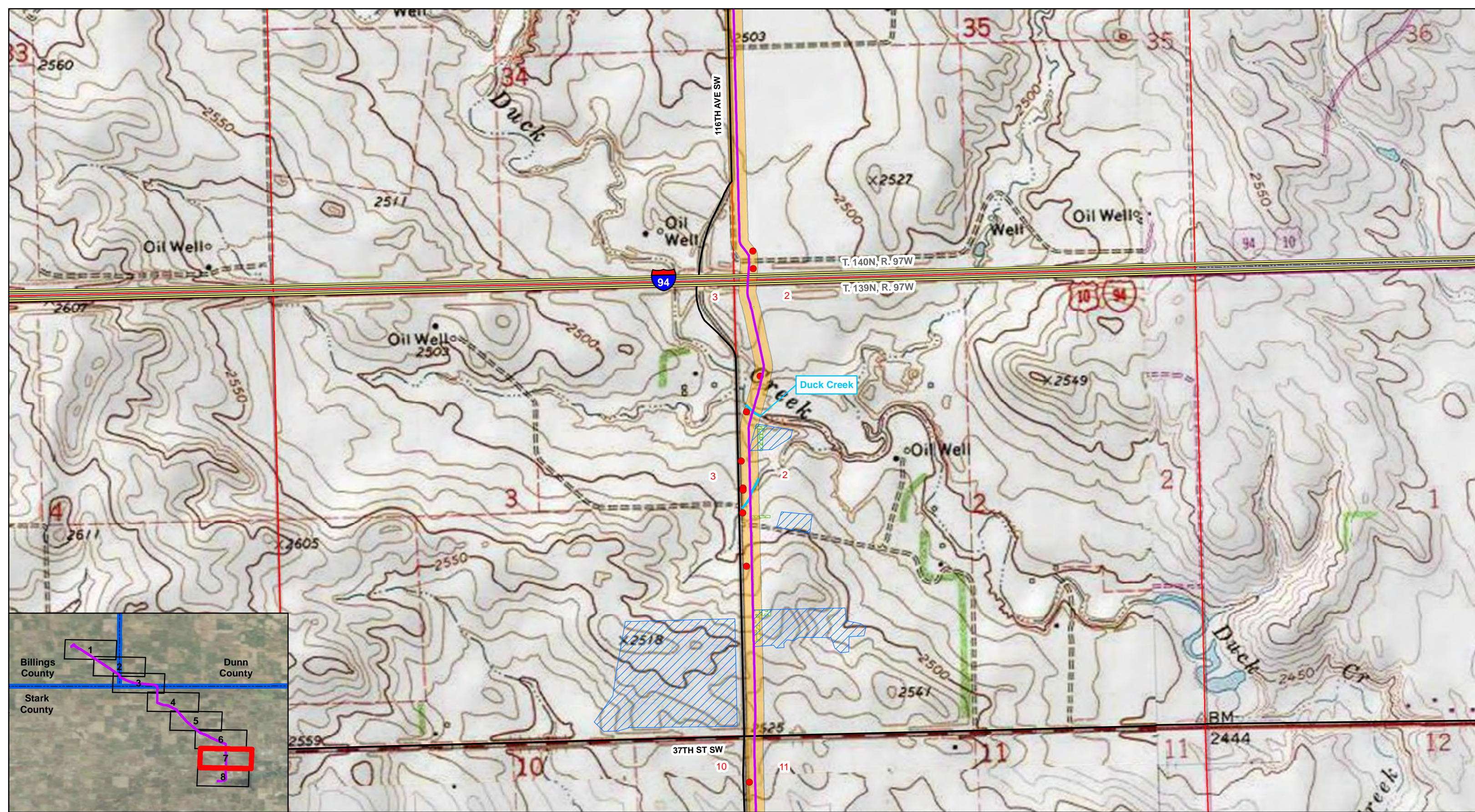
### Skunk Hill To DPR 6" Pipeline

- |                      |                             |                    |                         |
|----------------------|-----------------------------|--------------------|-------------------------|
| Water Wells          | Named Streams and Drainages | Woody Vegetation   | Section Boundary        |
| Noxious Weeds        | Interstate                  | Residence/Building | Township/Range Boundary |
| Block Valve          | Existing Road               | County Boundary    |                         |
| Proposed 6" Pipeline | Pipeline Corridor           |                    |                         |

Figure: A.2



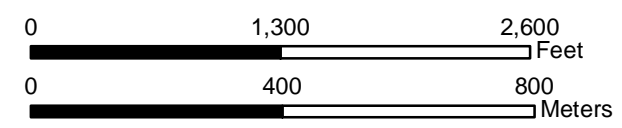
T. 140N, R. 97W  
 Stark County, North Dakota  
 Projection: NAD 1983 UTM Zone13N  
 Base Map: 7.5' USGS Topographic Map  
 Source: esri map services



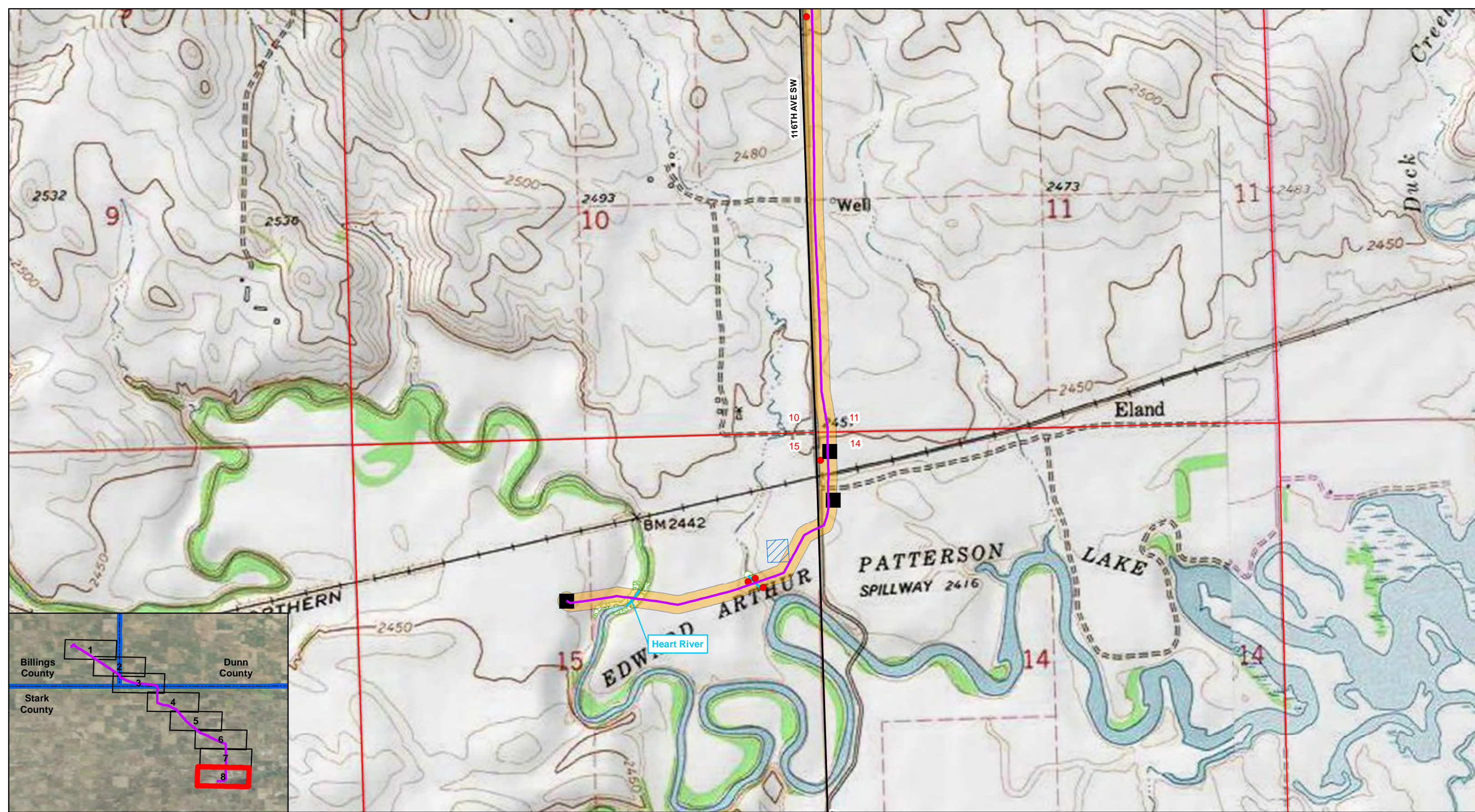
### Skunk Hill To DPR 6" Pipeline

- |                      |                             |                    |                         |
|----------------------|-----------------------------|--------------------|-------------------------|
| Water Wells          | Named Streams and Drainages | Woody Vegetation   | Section Boundary        |
| Noxious Weeds        | Interstate                  | Residence/Building | Township/Range Boundary |
| Block Valve          | Existing Road               | County Boundary    |                         |
| Proposed 6" Pipeline | Pipeline Corridor           |                    |                         |

Figure: A.2



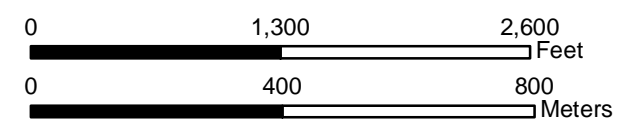
T. 140N, R. 97W and T. 139N, R. 97W  
 Stark County, North Dakota  
 Projection: NAD 1983 UTM Zone13N  
 Base Map: 7.5' USGS Topographic Map  
 Source: esri map services



### Skunk Hill To DPR 6" Pipeline

- |                      |                             |                    |                         |
|----------------------|-----------------------------|--------------------|-------------------------|
| Water Wells          | Named Streams and Drainages | Woody Vegetation   | Section Boundary        |
| Noxious Weeds        | Interstate                  | Residence/Building | Township/Range Boundary |
| Block Valve          | Existing Road               | County Boundary    |                         |
| Proposed 6" Pipeline | Pipeline Corridor           |                    |                         |

Figure: A.2



T. 139N, R. 97W  
 Stark County, North Dakota  
 Projection: NAD 1983 UTM Zone13N  
 Base Map: 7.5' USGS Topographic Map  
 Source: esri map services