

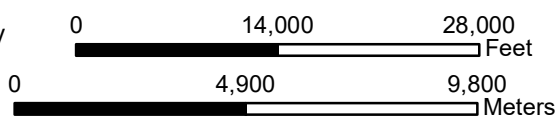


Skunk Hill To DPR 6" Pipeline

 Proposed 6" Pipeline

 Mapbook Page Layout

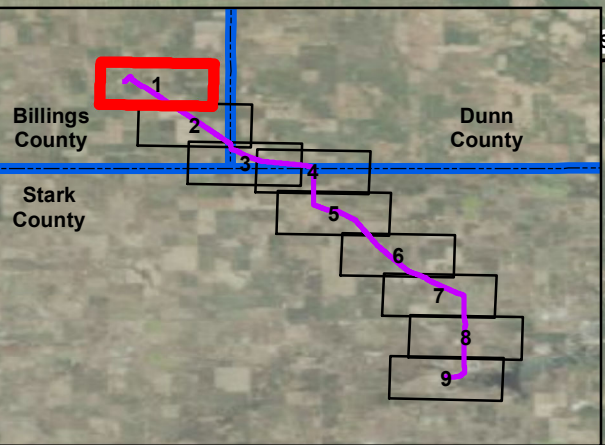
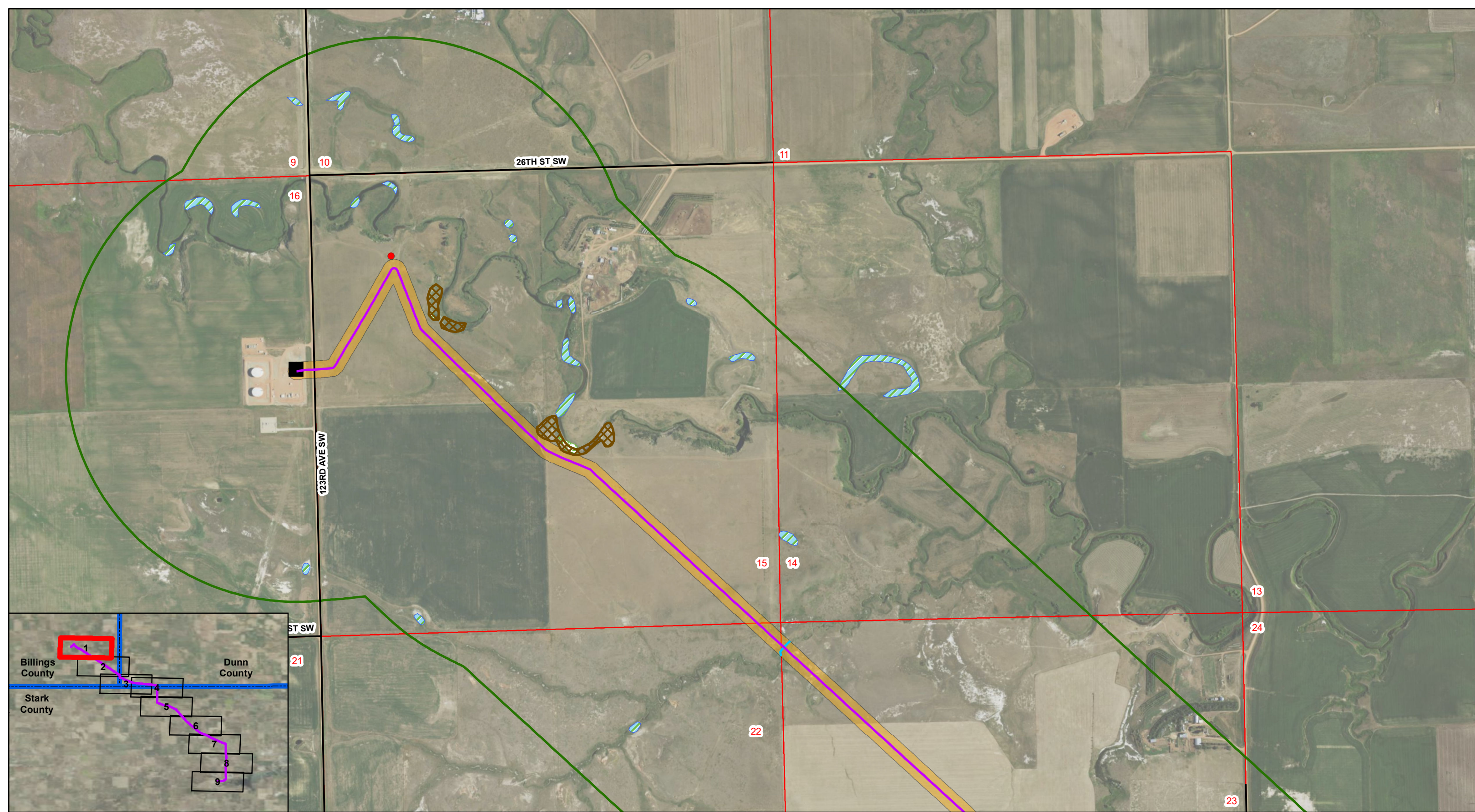
 County Boundary



Late-Filed Exhibit 7



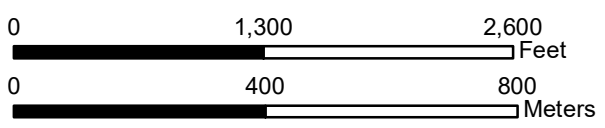
Project Location: Billings, Dunn, and Stark Counties, North Dakota
 Projection: NAD 1983 UTM Zone 13N
 Base Map: 2016 Aerial Imagery
 Source: USDA/FSA - Aerial Photography Field Office



Skunk Hill To DPR 6" Pipeline

- | | | | |
|--|-------------------|---------------------------|-------------------------|
| ● Noxious Weeds | Interstate | Woody Vegetation | ND Lands |
| Block Valve | Existing Road | Residence/Building | County Boundary |
| Proposed 6" Pipeline | Pipeline Corridor | Geological Unstable Areas | Section Boundary |
| Named Streams and Drainages | Study Area | NWI Wetland | Township/Range Boundary |

Figure: A.1

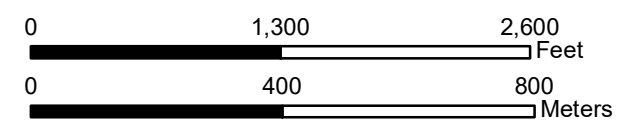




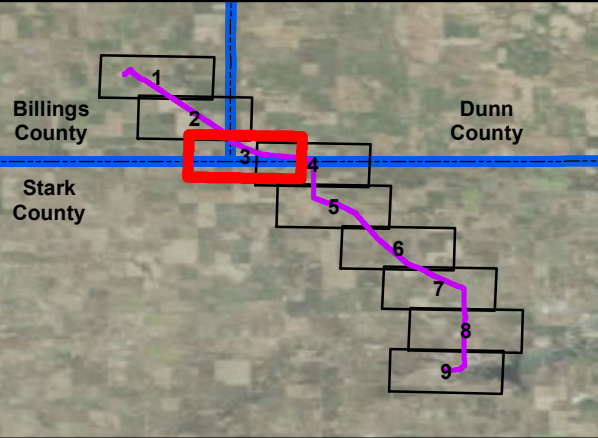
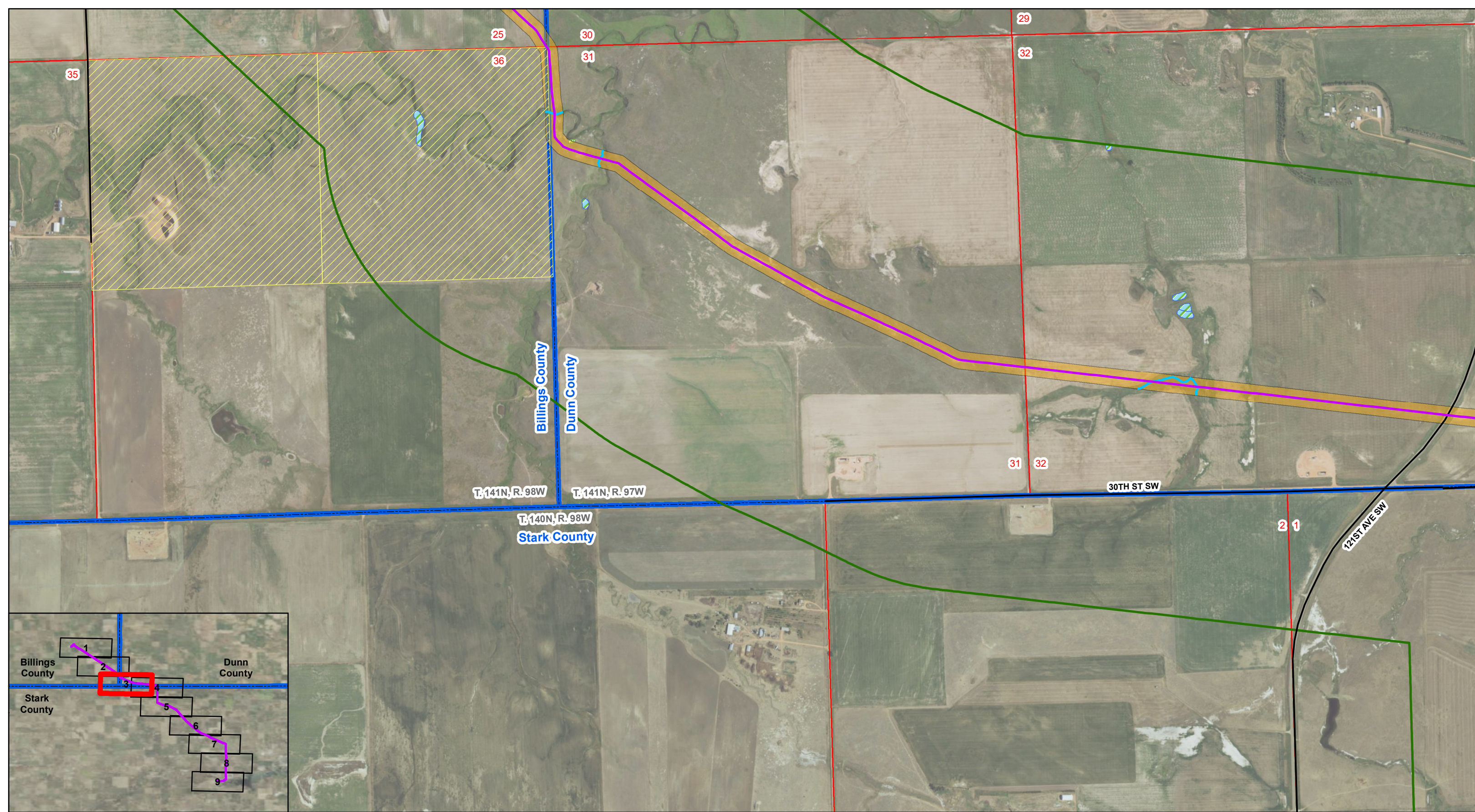
Skunk Hill To DPR 6" Pipeline

- | | | | |
|-------------------------------|---------------------|---------------------------|-------------------------|
| ● Noxious Weeds | — Interstate | Woody Vegetation | ND Lands |
| ■ Block Valve | — Existing Road | Residence/Building | County Boundary |
| — Proposed 6" Pipeline | — Pipeline Corridor | Geological Unstable Areas | Section Boundary |
| — Named Streams and Drainages | — Study Area | NWI Wetland | Township/Range Boundary |

Figure: A.1



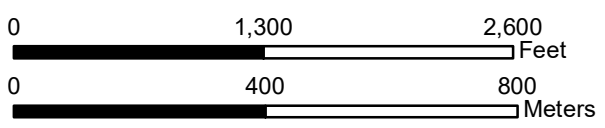
T. 141N, R. 98W and T. 141N, R. 97W
 Billings and Dunn Counties, North Dakota
 Projection: NAD 1983 UTM Zone13N
 Base Map: 2016 Aerial Imagery
 Source: USDA/FSA - Aerial Photography Field Office



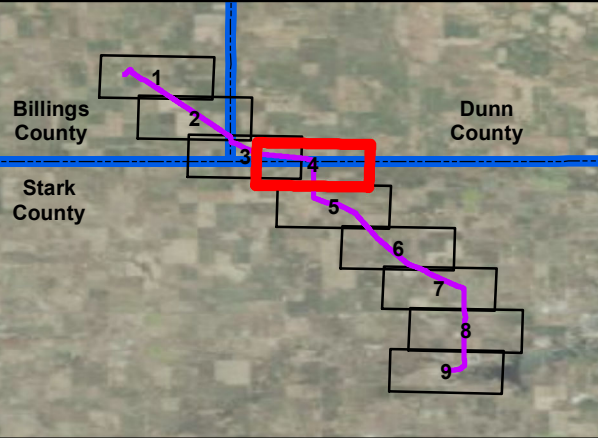
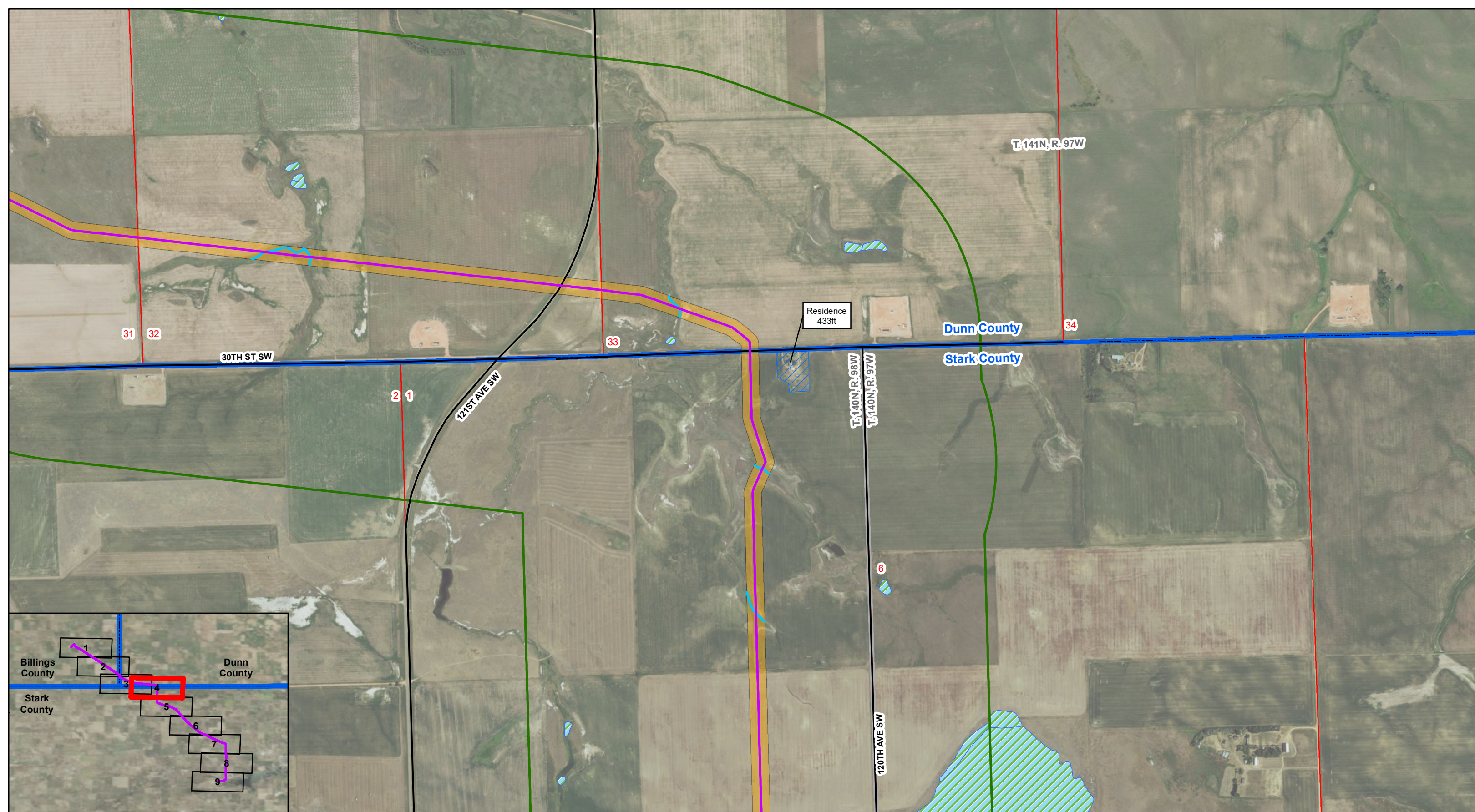
Skunk Hill To DPR 6" Pipeline

- Noxious Weeds
- Block Valve
- Proposed 6" Pipeline
- Named Streams and Drainages
- Interstate
- Existing Road
- Pipeline Corridor
- Study Area
- Woody Vegetation
- Residence/Building
- Geological Unstable Areas
- NWI Wetland
- ND Lands
- County Boundary
- Section Boundary
- Township/Range Boundary

Figure: A.1



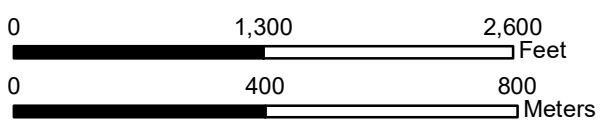
T. 141N, R. 98W, T. 141N, R. 97W, T. 140N, R. 98W, and T. 140N, R. 97W
 Billings, Dunn, and Stark Counties, North Dakota
 Projection: NAD 1983 UTM Zone13N
 Base Map: 2016 Aerial Imagery
 Source: USDA/FSA - Aerial Photography Field Office



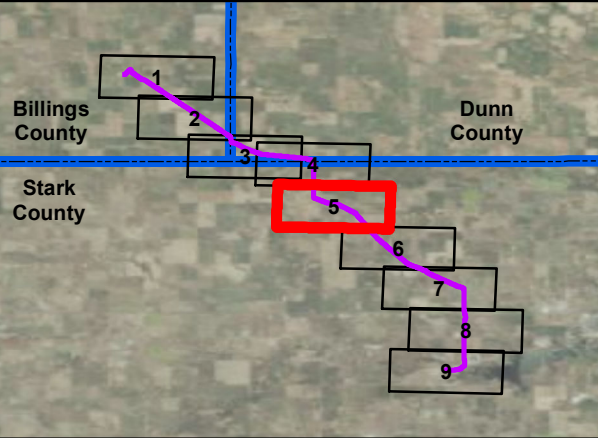
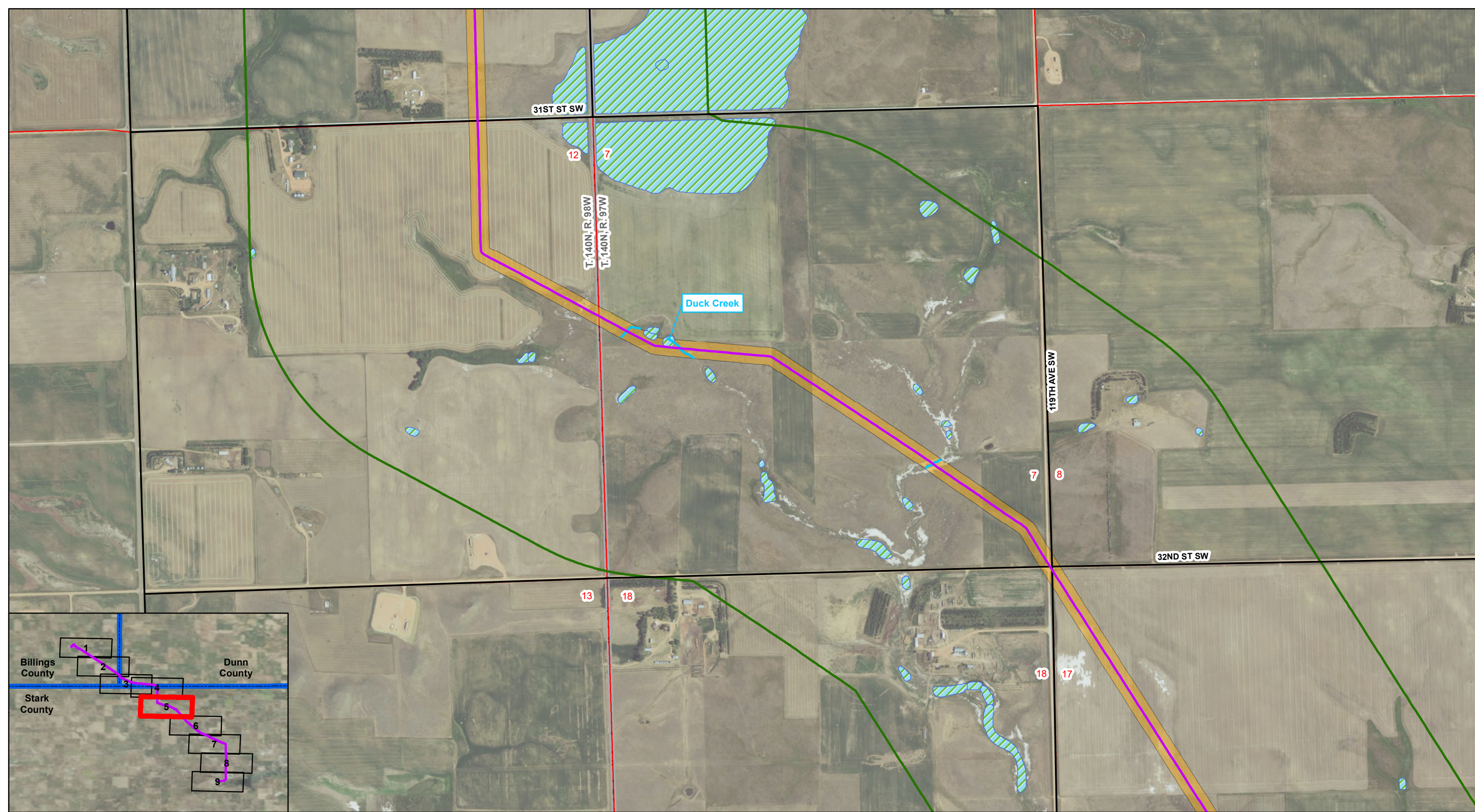
Skunk Hill To DPR 6" Pipeline

- Noxious Weeds
- Block Valve
- Proposed 6" Pipeline
- Named Streams and Drainages
- Interstate
- Existing Road
- Pipeline Corridor
- Study Area
- Woody Vegetation
- Residence/Building
- Geological Unstable Areas
- NWI Wetland
- ND Lands
- County Boundary
- Section Boundary
- Township/Range Boundary

Figure: A.1



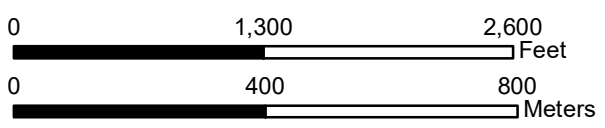
T. 141N, R. 97W, T. 140N, R. 98W, and T. 140N, R. 97W
 Dunn and Stark Counties, North Dakota
 Projection: NAD 1983 UTM Zone13N
 Base Map: 2016 Aerial Imagery
 Source: USDA/FSA - Aerial Photography Field Office



Skunk Hill To DPR 6" Pipeline

- | | | | |
|--|-------------------|---------------------------|-------------------------|
| ● Noxious Weeds | Interstate | Woody Vegetation | ND Lands |
| Block Valve | Existing Road | Residence/Building | County Boundary |
| Proposed 6" Pipeline | Pipeline Corridor | Geological Unstable Areas | Section Boundary |
| Named Streams and Drainages | Study Area | NWI Wetland | Township/Range Boundary |

Figure: A.1



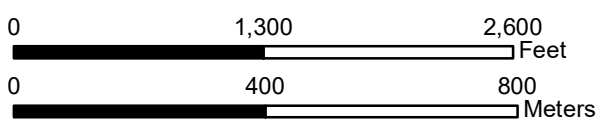
T. 140N, R. 98W and T. 140N, R. 97W
 Stark County, North Dakota
 Projection: NAD 1983 UTM Zone13N
 Base Map: 2016 Aerial Imagery
 Source: USDA/FSA - Aerial Photography Field Office

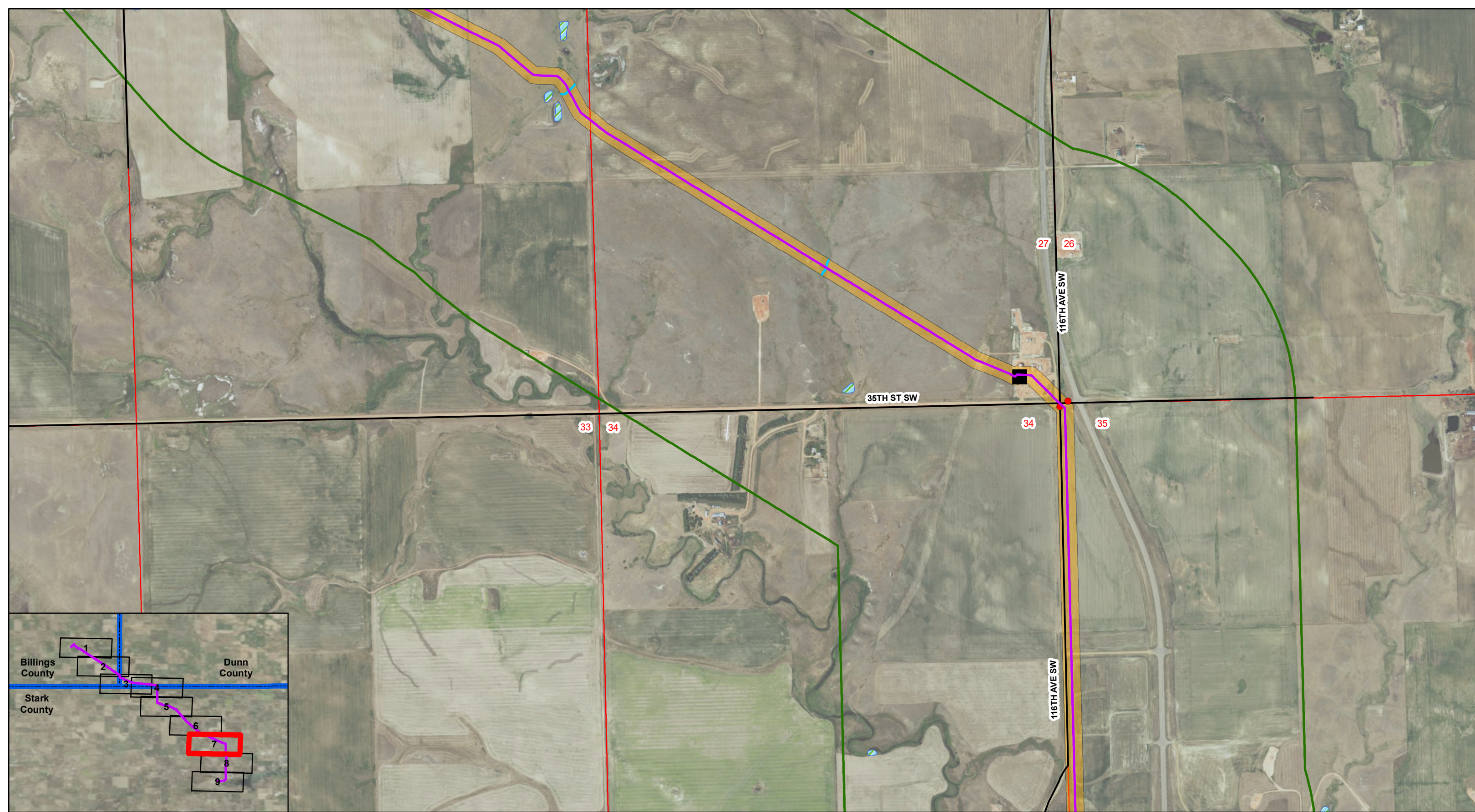


Skunk Hill To DPR 6" Pipeline

- | | | | |
|--|-------------------|---------------------------|-------------------------|
| ● Noxious Weeds | Interstate | Woody Vegetation | ND Lands |
| Block Valve | Existing Road | Residence/Building | County Boundary |
| Proposed 6" Pipeline | Pipeline Corridor | Geological Unstable Areas | Section Boundary |
| Named Streams and Drainages | Study Area | NWI Wetland | Township/Range Boundary |

Figure: A.1

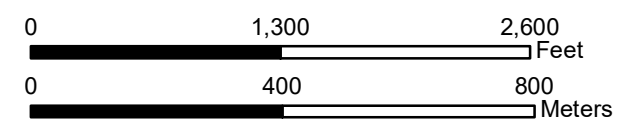




Skunk Hill To DPR 6" Pipeline

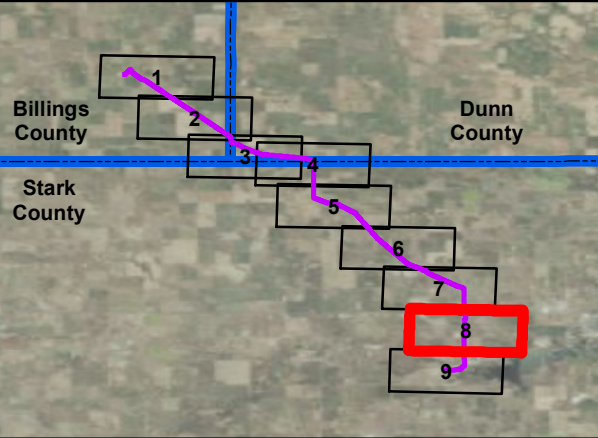
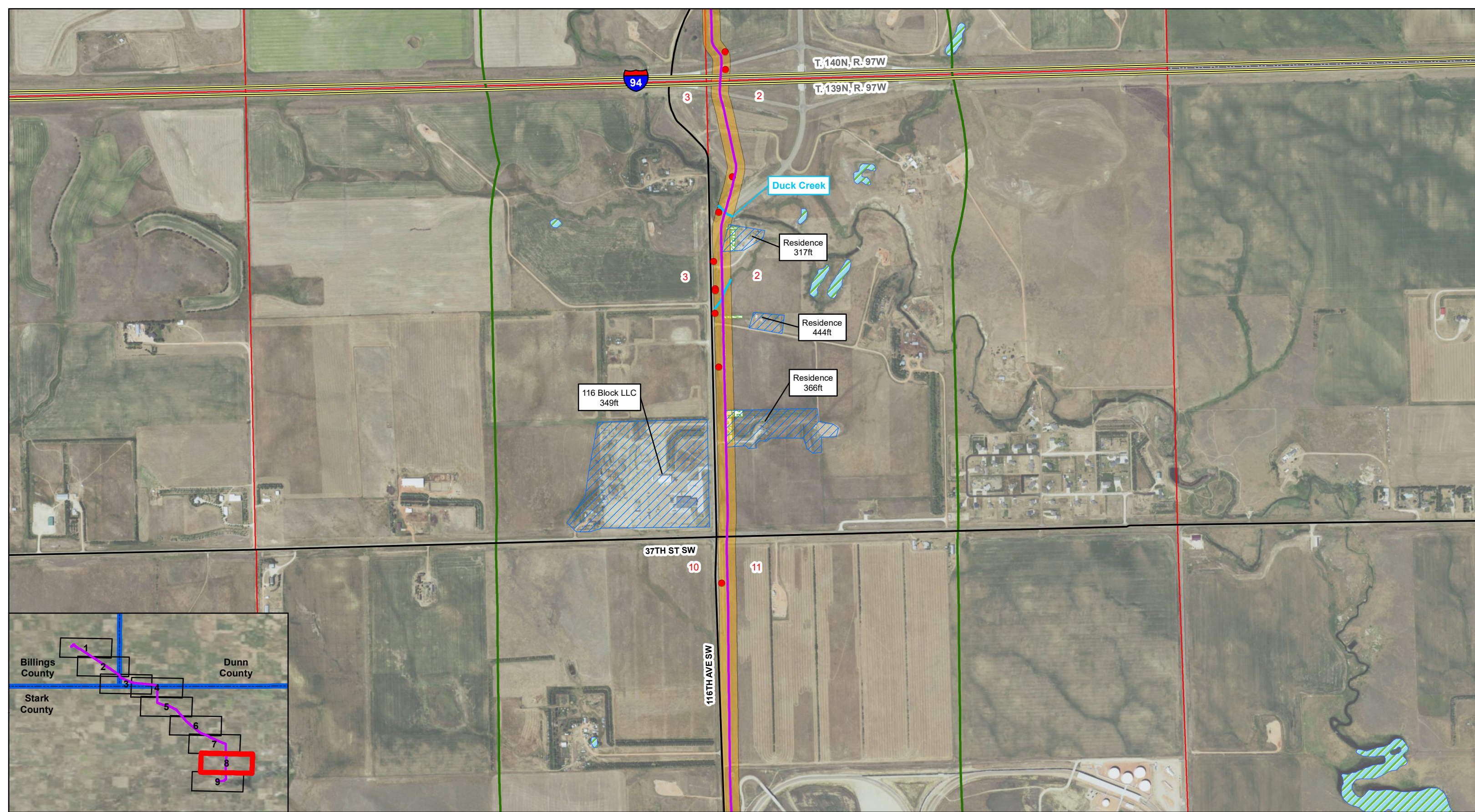
- | | | | |
|--|-------------------|---------------------------|-------------------------|
| ● Noxious Weeds | Interstate | Woody Vegetation | ND Lands |
| Block Valve | Existing Road | Residence/Building | County Boundary |
| Proposed 6" Pipeline | Pipeline Corridor | Geological Unstable Areas | Section Boundary |
| Named Streams and Drainages | Study Area | NWI Wetland | Township/Range Boundary |

Figure: A.1



Page 7 of 9

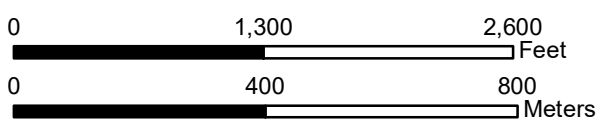
T. 140N, R. 97W
 Stark County, North Dakota
 Projection: NAD 1983 UTM Zone13N
 Base Map: 2016 Aerial Imagery
 Source: USDA/FSA - Aerial Photography Field Office



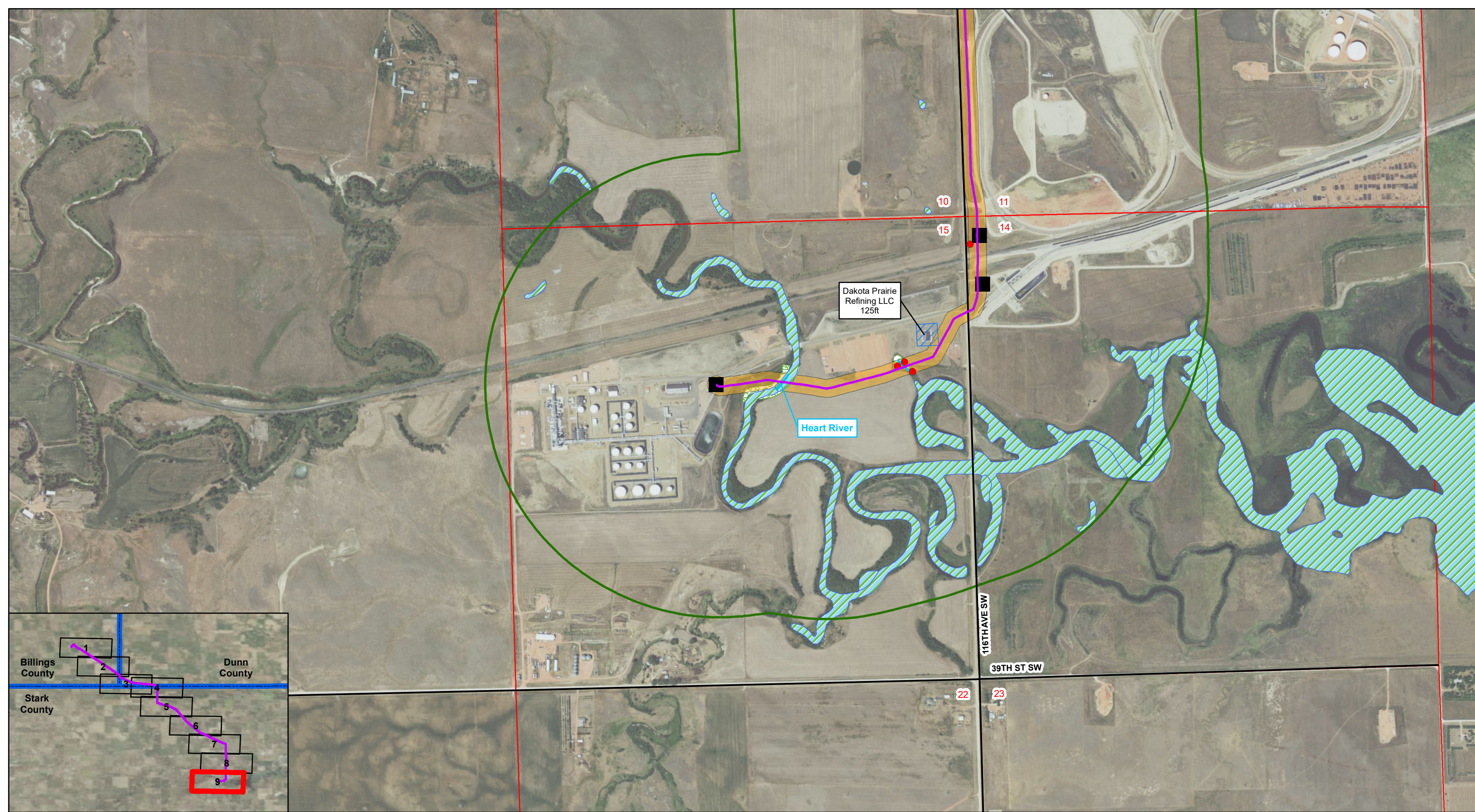
Skunk Hill To DPR 6" Pipeline

- Noxious Weeds
- Block Valve
- Proposed 6" Pipeline
- Named Streams and Drainages
- Interstate
- Existing Road
- Pipeline Corridor
- Study Area
- Woody Vegetation
- Residence/Building
- Geological Unstable Areas
- NWI Wetland
- ND Lands
- County Boundary
- Section Boundary
- Township/Range Boundary

Figure: A.1



T. 140N, R. 97W and T. 139N, R. 97W
 Stark County, North Dakota
 Projection: NAD 1983 UTM Zone13N
 Base Map: 2016 Aerial Imagery
 Source: USDA/FSA - Aerial Photography Field Office



Skunk Hill To DPR 6" Pipeline

- Noxious Weeds
- Block Valve
- Proposed 6" Pipeline
- Named Streams and Drainages
- Interstate
- Existing Road
- Pipeline Corridor
- Study Area
- Woody Vegetation
- Residence/Building
- Geological Unstable Areas
- NWI Wetland
- ND Lands
- County Boundary
- Section Boundary
- Township/Range Boundary

Figure: A.1

