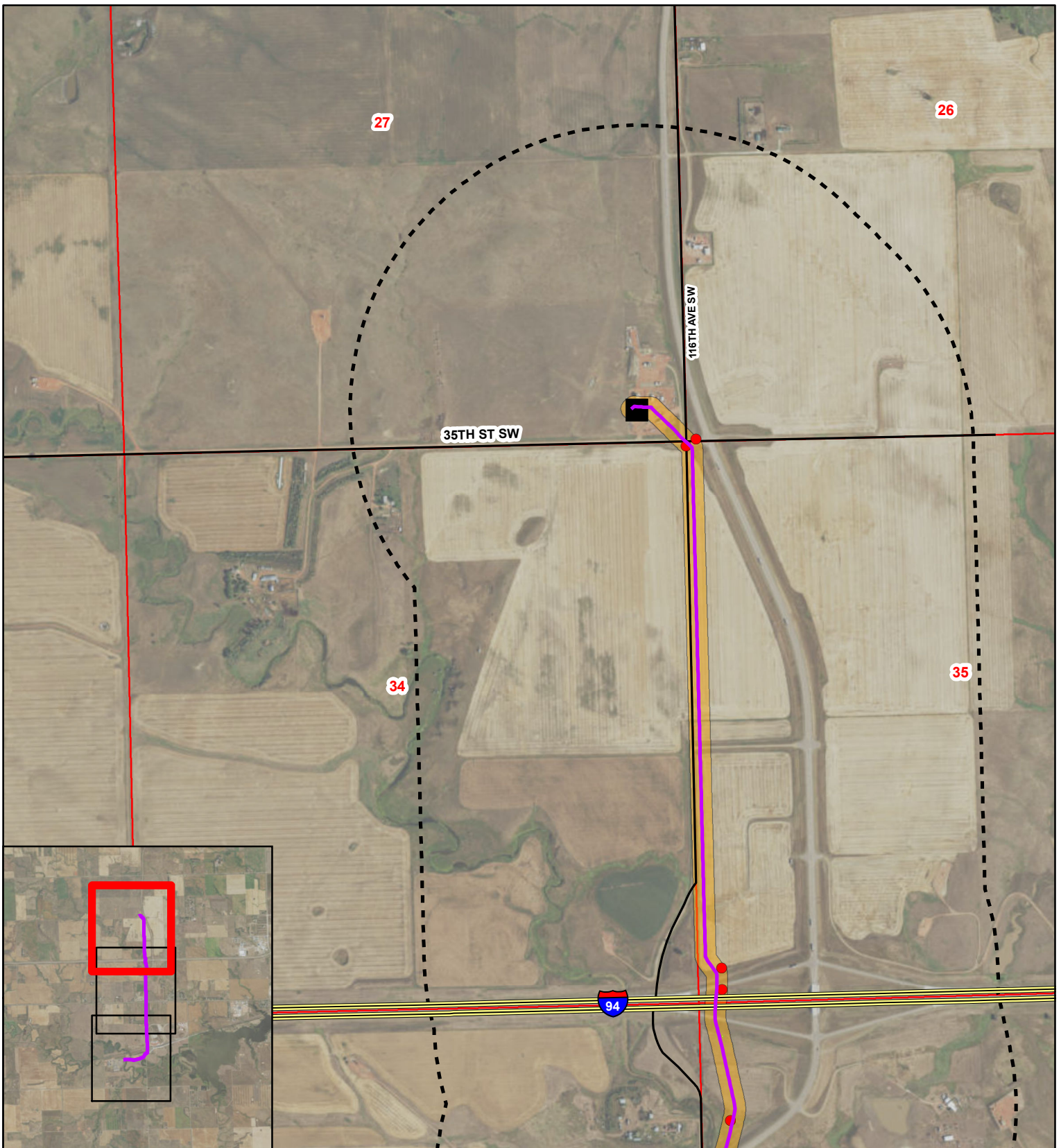


Exhibit A.1
Aerial Mapbook





6" Pipeline Conversion (Project)

● Noxious Weeds	Woody Vegetation	County Boundary
Block Valve	Pipeline Corridor	Section Boundary
Proposed 6" Pipeline	Residence/Building	Township/Range Boundary
Named Streams and Drainages	1-mile Study Area	
Interstate		
Existing Road		

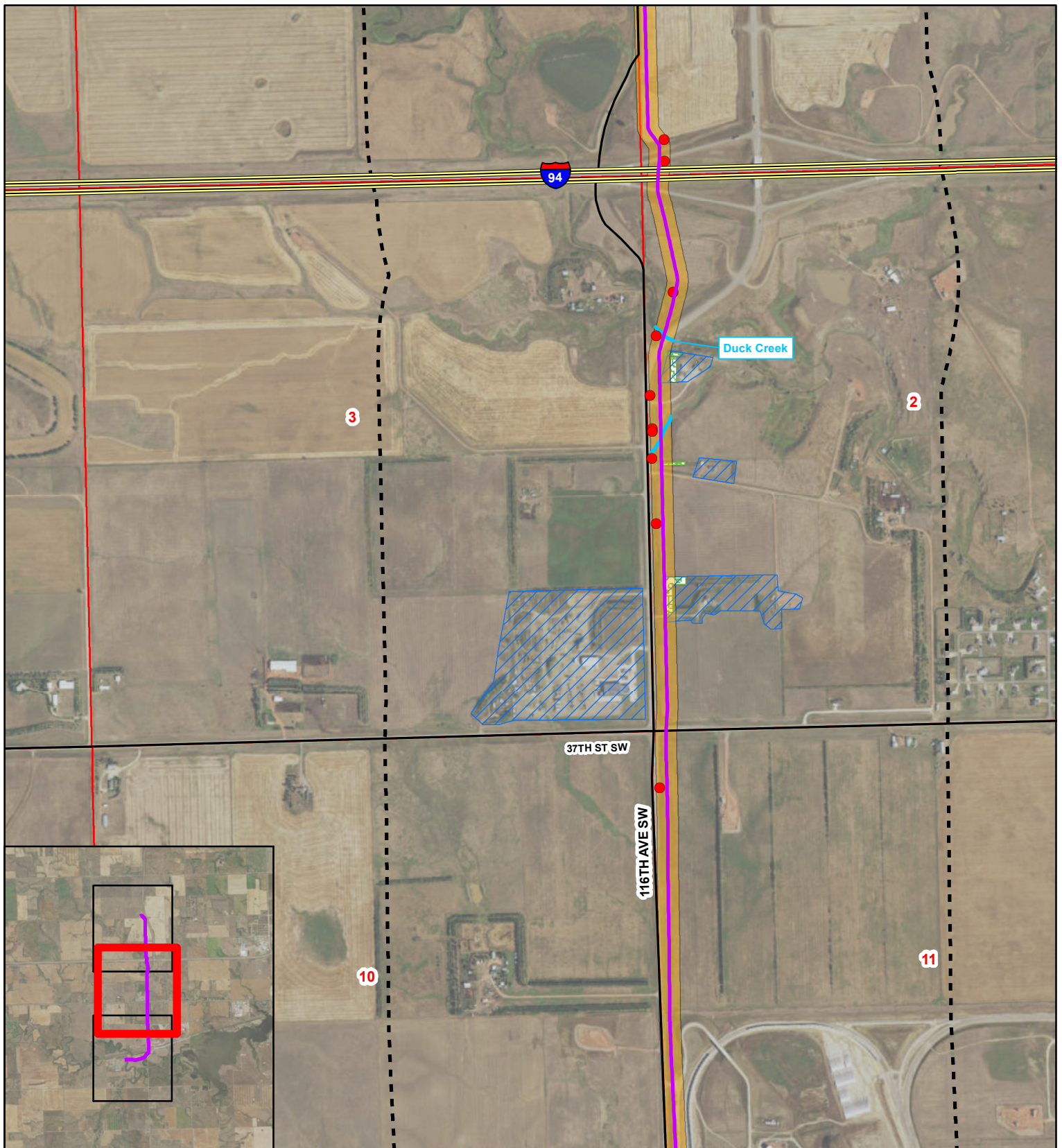
Page 1 of 3
 T. 140N, R. 97W
 and T. 139N, R. 97W
 Stark County, North Dakota
 Projection: NAD 1983 UTM Zone13N
 Base Map: 2016 Aerial Imagery
 Source: USDA/FSA - Aerial Photography Field Office

N

0 1,300 2,600
 Feet

0 500 1,000
 Meters

Figure: A.1



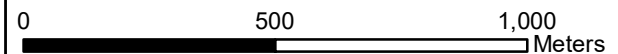
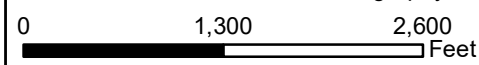
6" Pipeline Conversion (Project)

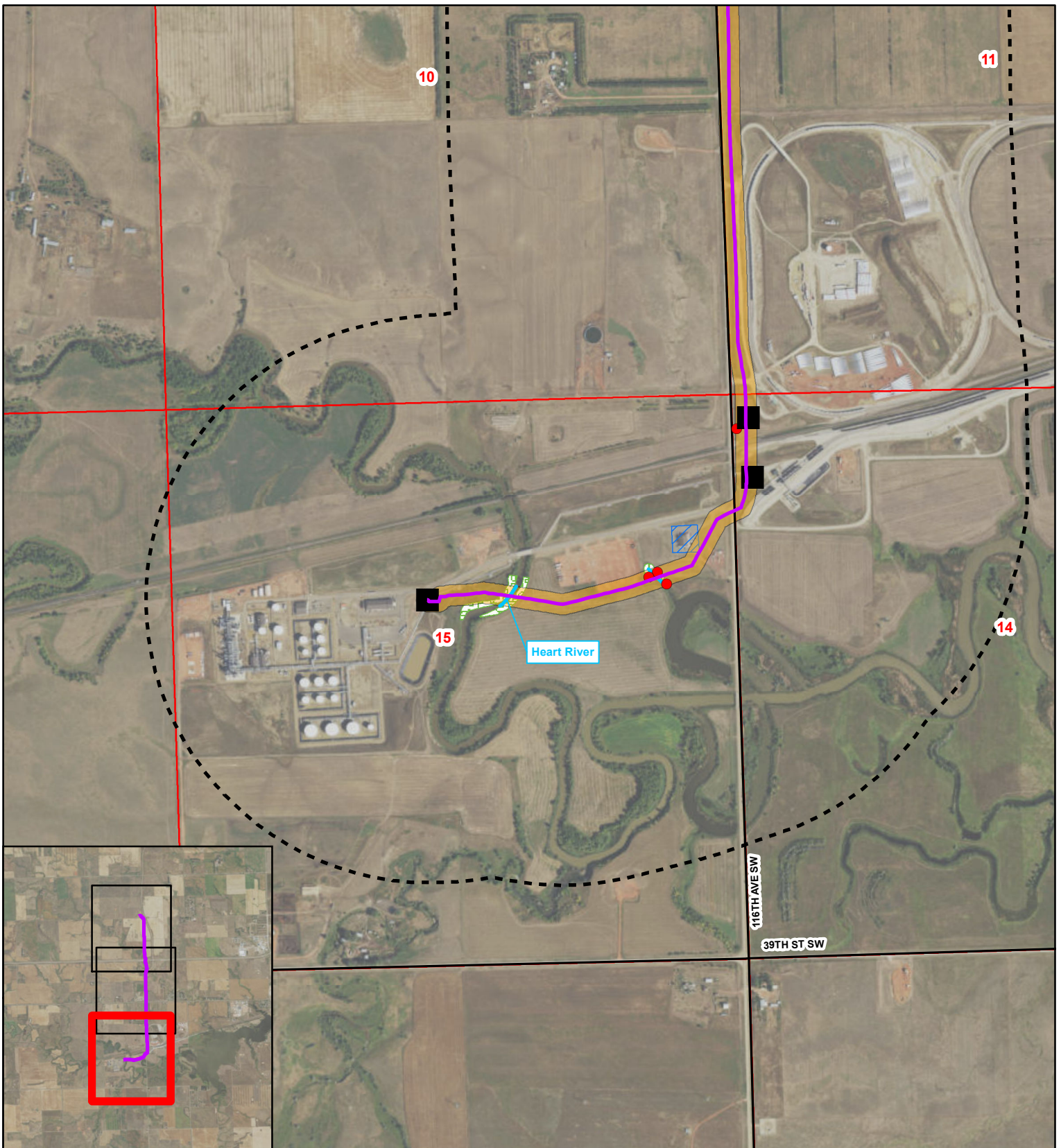
- Noxious Weeds
- Block Valve
- Proposed 6" Pipeline
- Named Streams and Drainages
- Interstate
- Existing Road
- Woody Vegetation
- Pipeline Corridor
- Residence/Building
- 1-mile Study Area
- County Boundary
- Section Boundary
- Township/Range Boundary

Figure: A.1

Page 2 of 3
T. 139N, R. 97W

Stark County, North Dakota
Projection: NAD 1983 UTM Zone13N
Base Map: 2016 Aerial Imagery
Source: USDA/FSA - Aerial Photography Field Office





6" Pipeline Conversion (Project)

- Noxious Weeds
- Block Valve
- Proposed 6" Pipeline
- Named Streams and Drainages
- Interstate
- Existing Road
- Woody Vegetation
- Pipeline Corridor
- Residence/Building
- 1-mile Study Area
- County Boundary
- Section Boundary
- Township/Range Boundary

Figure: A.1

Page 3 of 3
T. 139N, R. 97W

Stark County, North Dakota
Projection: NAD 1983 UTM Zone13N
Base Map: 2016 Aerial Imagery
Source: USDA/FSA - Aerial Photography Field Office

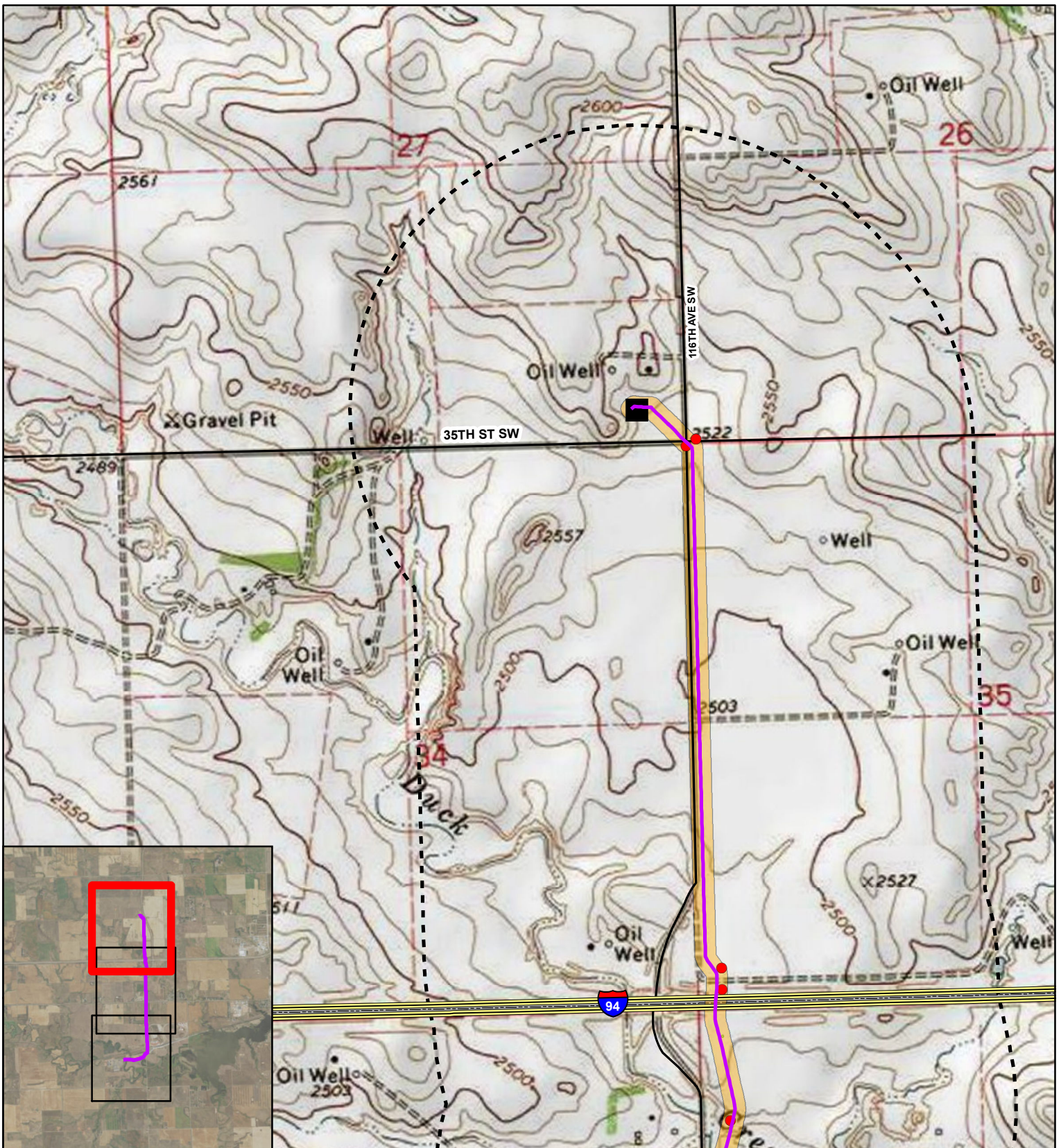
0 1,300 2,600
Feet

0 500 1,000
Meters



**Exhibit A.2
Topographic
Mapbook**





6" Pipeline Conversion (Project)

- | | | |
|--|--------------------|-------------------------|
| ● Noxious Weeds | Woody Vegetation | County Boundary |
| Block Valve | Pipeline Corridor | Section Boundary |
| Proposed 6" Pipeline | Residence/Building | Township/Range Boundary |
| Named Streams and Drainages | 1-mile Study Area | |
| Interstate | | |
| Existing Road | | |

Page 1 of 3

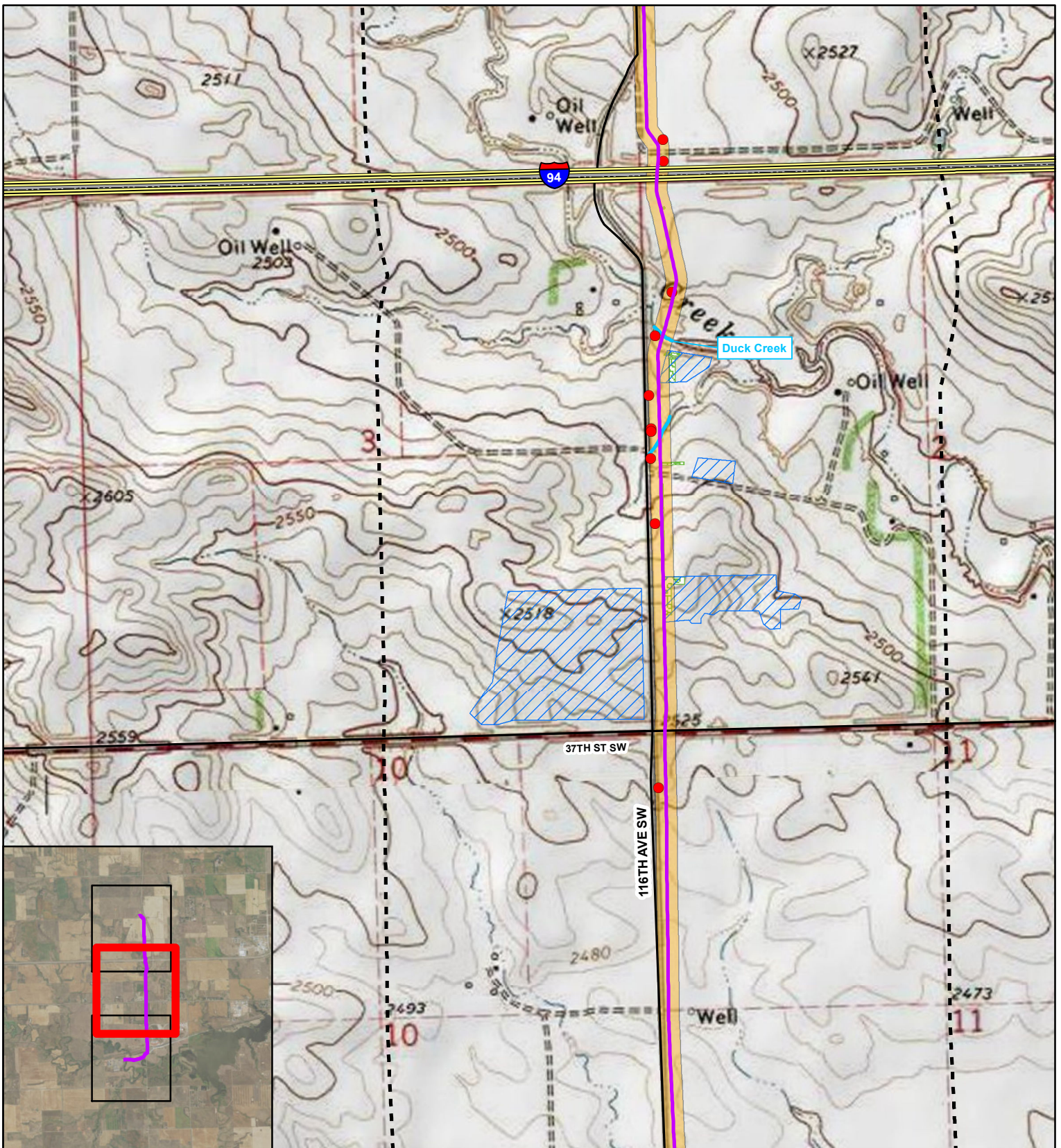
T. 140N, R. 97W
 and T. 139N, R. 97W
 Stark County, North Dakota
 Projection: NAD 1983 UTM Zone13N
 Base Map: 7.5' USA Topographic Map
 Source: esri map service



0 1,300 2,600
 Feet

0 500 1,000
 Meters

Figure: A.2



6" Pipeline Conversion (Project)

- Noxious Weeds
- Block Valve
- Proposed 6" Pipeline
- Named Streams and Drainages
- Interstate
- Existing Road
- Woody Vegetation
- Pipeline Corridor
- Residence/Building
- 1-mile Study Area
- County Boundary
- Section Boundary
- Township/Range Boundary

Page 2 of 3

T. 139N, R. 97W

Stark County, North Dakota
 Projection: NAD 1983 UTM Zone13N
 Base Map: 7.5' USA Topographic Map
 Source: esri map service

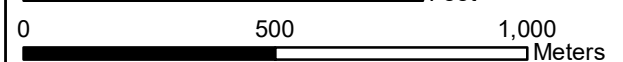
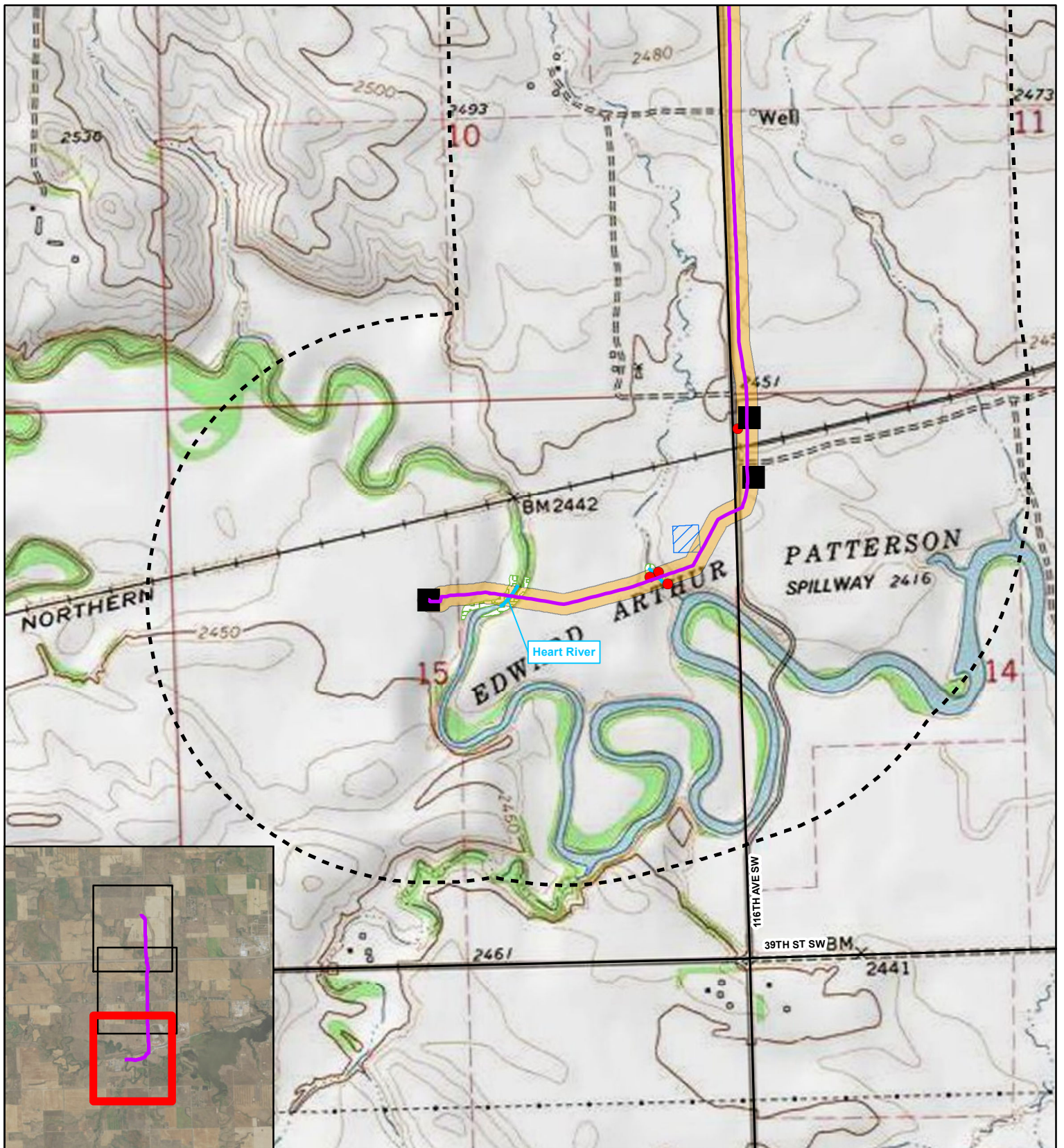


Figure: A.2



6" Pipeline Conversion (Project)

- Noxious Weeds
- Block Valve
- Proposed 6" Pipeline
- Named Streams and Drainages
- Interstate
- Existing Road
- Woody Vegetation
- Pipeline Corridor
- Residence/Building
- 1-mile Study Area
- County Boundary
- Section Boundary
- Township/Range Boundary

Page 3 of 3
T. 139N, R. 97W

Stark County, North Dakota
Projection: NAD 1983 UTM Zone13N
Base Map: 7.5' USA Topographic Map
Source: esri map service

0 1,300 2,600
Feet

0 500 1,000
Meters



Figure: A.2