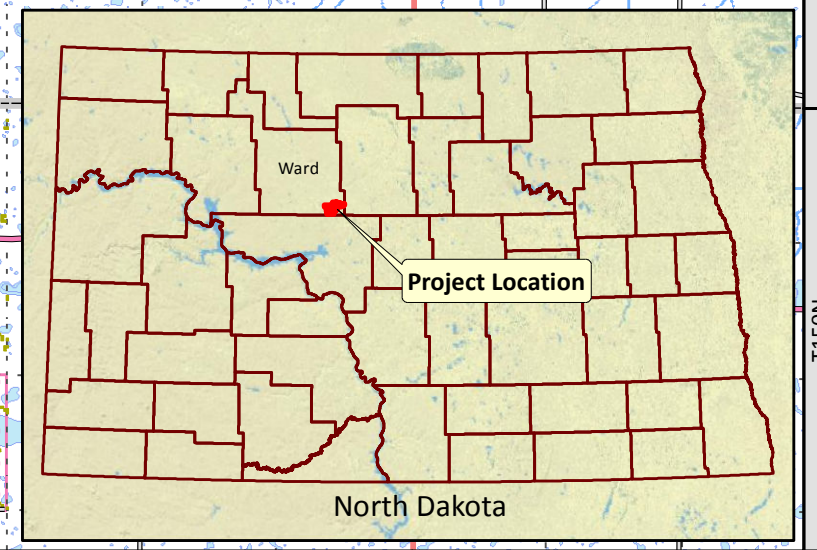


Residence	Nearest Turbine	Distance to Nearest Turbine (feet)	Status
1	13	9,978.1	Non-Participating
2	13	7,749.7	Non-Participating
3	13	7,067.9	Participating
4	13	8,899.5	Participating
5	64 (Removed)	10,078.1	Non-Participating
6	64 (Removed)	13,784.3	Non-Participating
7	64 (Removed)	14,328.8	Non-Participating
8	56	8,104.1	Non-Participating
9	56	11,277.3	Participating
10	56	15,010.7	Non-Participating
11	56	5,036.0	Non-Participating
12	62	3,481.2	Participating
13	40	2,719.4	Participating
14	40	1,646.3	Participating
15	60	2,048.3	Participating
16	58	2,391.9	Non-Participating
17	5	2,018.2	Non-Participating
18	61	2,213.6	Participating
19	49	2,977.4	Participating
20	9	1,702.5	Participating
21	11	2,884.1	Participating
22	20	1,718.9	Participating
23	26	3,597.5	Non-Participating
24	28	1,954.9	Participating
25	36	2,542.3	Non-Participating
26	64 (Removed)	9,701.5	Non-Participating
27	12	3,592.6	Participating
28	12	1,885.4	Participating
29	1	20,787.1	Non-Participating
30	1	21,935.7	Non-Participating
31	1	17,070.8	Non-Participating
32	1	16,621.8	Non-Participating
33	1	16,080.7	Non-Participating
34	1	15,454.9	Non-Participating

Residence	Nearest Turbine	Distance to Nearest Turbine (feet)	Status
35	56	6,331.4	Participating
36	56	24,941.2	Non-Participating
37	56	24,178.8	Non-Participating
38	64 (Removed)	25,084.8	Participating
39	64 (Removed)	26,536.5	Non-Participating
40	59	2,206.1	Non-Participating
41	7	2,381.9	Non-Participating
42	56	17,849.8	Non-Participating
43	56	9,194.7	Non-Participating
44	56	8,671.8	Non-Participating
45	64 (Removed)	21,494.7	Participating
46	5	23,957.3	Non-Participating
47	5	26,685.0	Non-Participating
48	64 (Removed)	21,224.4	Non-Participating
49	5	17,081.6	Non-Participating
50	61	1,651.4	Participating
51	64 (Removed)	14,615.0	Non-Participating
52	64 (Removed)	11,318.9	Non-Participating
53	64 (Removed)	11,246.8	Non-Participating
54	53	2,175.2	Participating
55	53	9,853.0	Participating
56	53	8,251.9	Non-Participating
57	53	9,477.7	Non-Participating
58	8	3,030.8	Non-Participating
59	57	15,995.4	Non-Participating
60	57	14,524.7	Non-Participating
61	57	13,945.7	Non-Participating
62	57	13,716.4	Participating
63	57	10,688.5	Participating
64	53	10,803.5	Non-Participating
65	53	9,600.5	Non-Participating
66	53	9,121.5	Non-Participating
67	8	6,348.8	Non-Participating
68	8	6,270.1	Non-Participating



KLJ Southern Power

0 0.5 1 2 Miles

1:90,000

KLJ Project Number: 1809-00886
Date Created: 5/17/2019 Created By: JDP

Wind Project Constraints

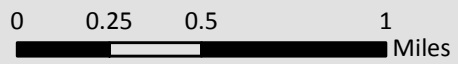
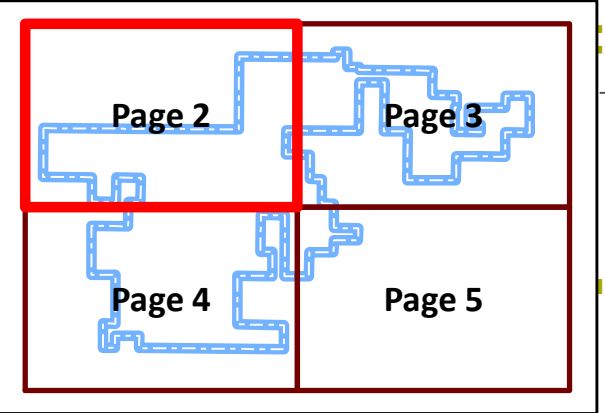
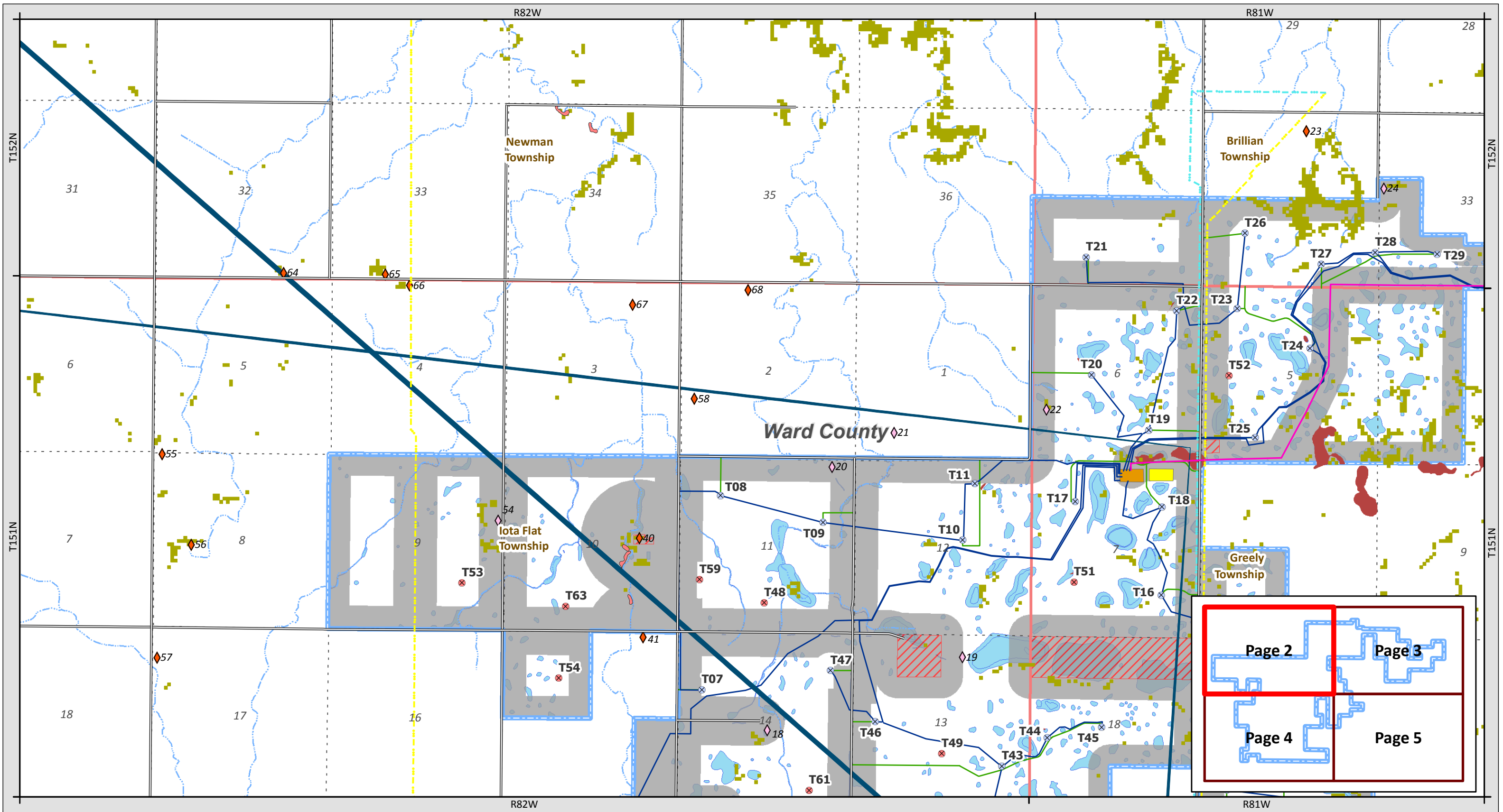
Ruso Wind Project

Ward County, ND

Page 1 of 5

Confidential cultural resource information not included.

- Project Area
- Residence (Non-Participating)
- Residence (Participating)
- Primary Turbine (Layout 25)
- Alternate Turbine (Layout 25)
- Collector Line
- Access Road
- O&M Facility
- Substation
- Roads
- State Highway
- Section
- Township
- County Boundary
- Streams
- NWI Wetlands
- Incorporated City
- Woodlands
- Field Assessed Wetlands
- USFWS WPA
- Historic Landslide
- Microwave Beam Fresnel Zones
- Transmission Project Route
- Electric Transmission Line (<115 kV)
- Electric Transmission Line (115+ kV)
- Military Installation
- Commission, County & Township Setbacks



1:33,000



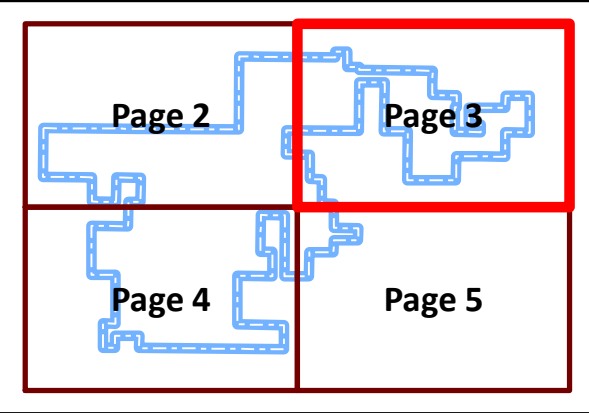
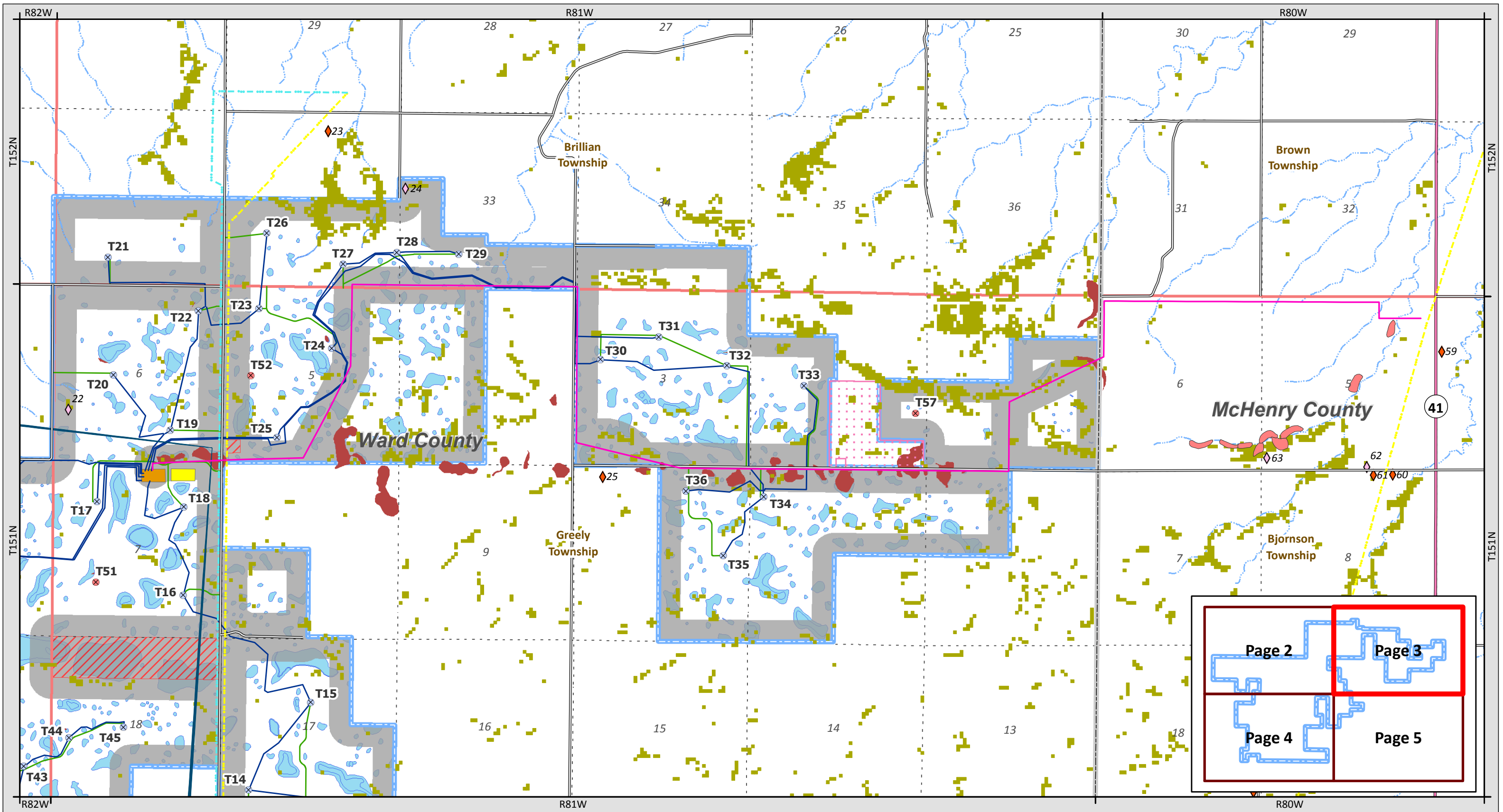
KLJ Project Number: 1809-00886
 Date Created: 5/17/2019 Created By: JDP

Wind Project Constraints Ruso Wind Project

Ward County, ND
Page 2 of 5

Confidential cultural resource information not included.

- | | | |
|-------------------------------|-----------------|--|
| Project Area | Substation | Field Assessed Wetlands |
| Residence (Non-Participating) | Roads | Historic Landslide |
| Residence (Participating) | Section | Non-Participating Property |
| Primary Turbine (Layout 25) | Township | Microwave Beam Fresnel Zones |
| Alternate Turbine (Layout 25) | County Boundary | Transmission Project Route |
| Collector Line | Streams | Electric Transmission Line (<115 kV) |
| Access Road | NWI Wetlands | Electric Transmission Line (115+ kV) |
| O&M Facility | Woodlands | Commission, County & Township Setbacks |



KLJ **Southern Power**

0 0.25 0.5 1 Miles

1:33,000

KLJ Project Number: 1809-00886
Date Created: 5/17/2019 Created By: JDP

Wind Project Constraints

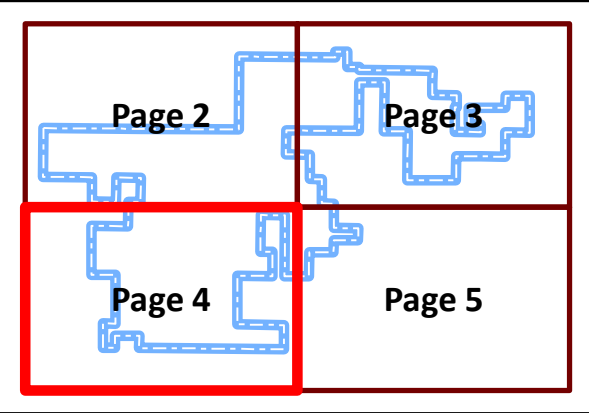
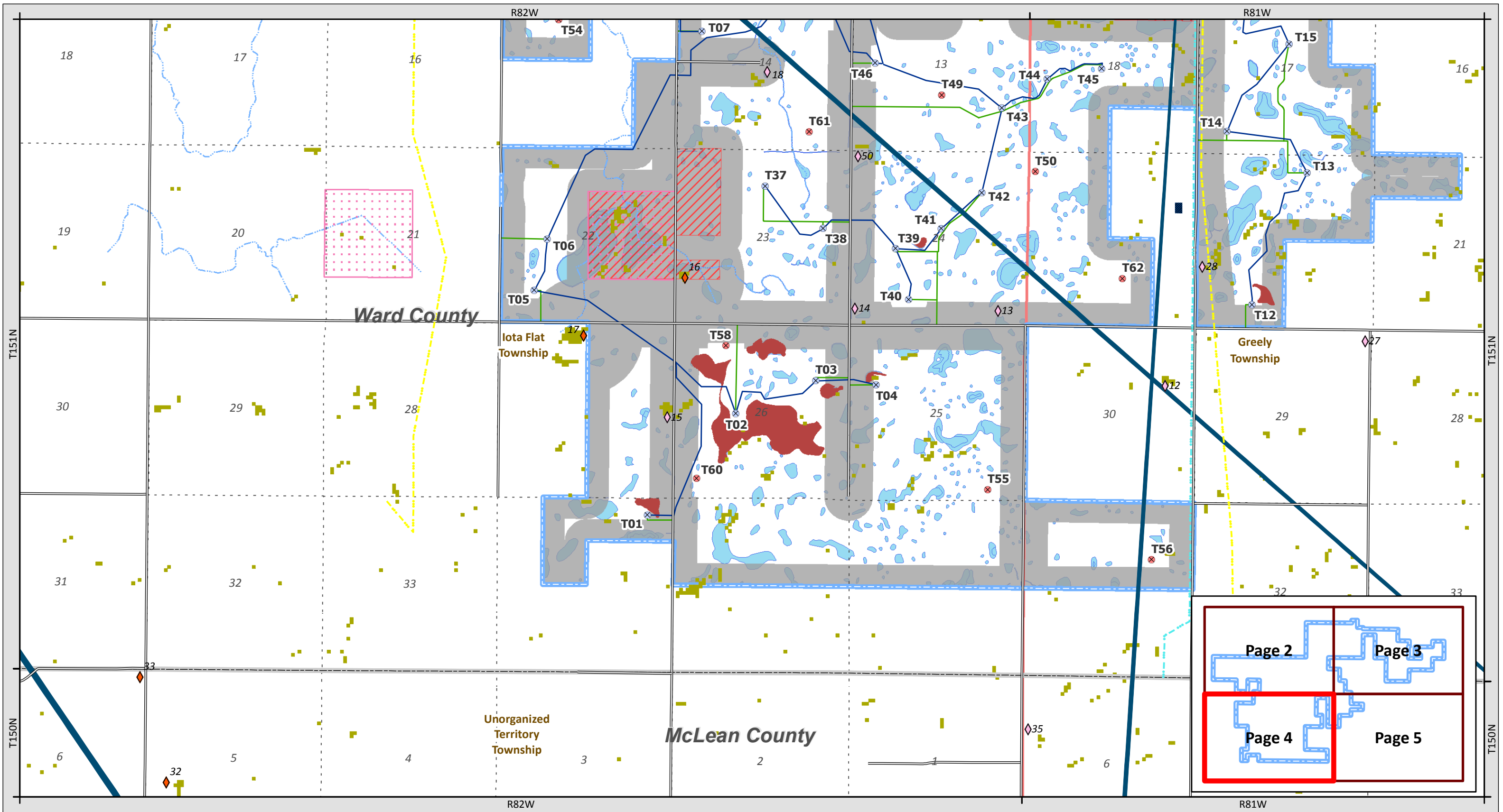
Ruso Wind Project

Ward County, ND

Page 3 of 5

Confidential cultural resource information not included.

- | | | |
|-------------------------------|-------------------------|--|
| Project Area | Roads | USFWS WPA |
| Residence (Non-Participating) | State Highway | Historic Landslide |
| Residence (Participating) | Section | Non-Participating Property |
| Primary Turbine (Layout 25) | Township | Microwave Beam Fresnel Zones |
| Alternate Turbine (Layout 25) | County Boundary | Transmission Project Route |
| Collector Line | Streams | Electric Transmission Line (<115 kV) |
| Access Road | NWI Wetlands | Electric Transmission Line (115+ kV) |
| O&M Facility | Woodlands | Commission, County & Township Setbacks |
| Substation | Field Assessed Wetlands | |



KLJ Southern Power

0 0.25 0.5 1 Miles

1:33,000

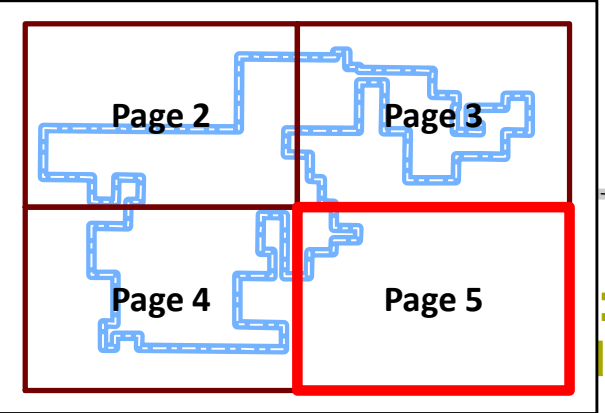
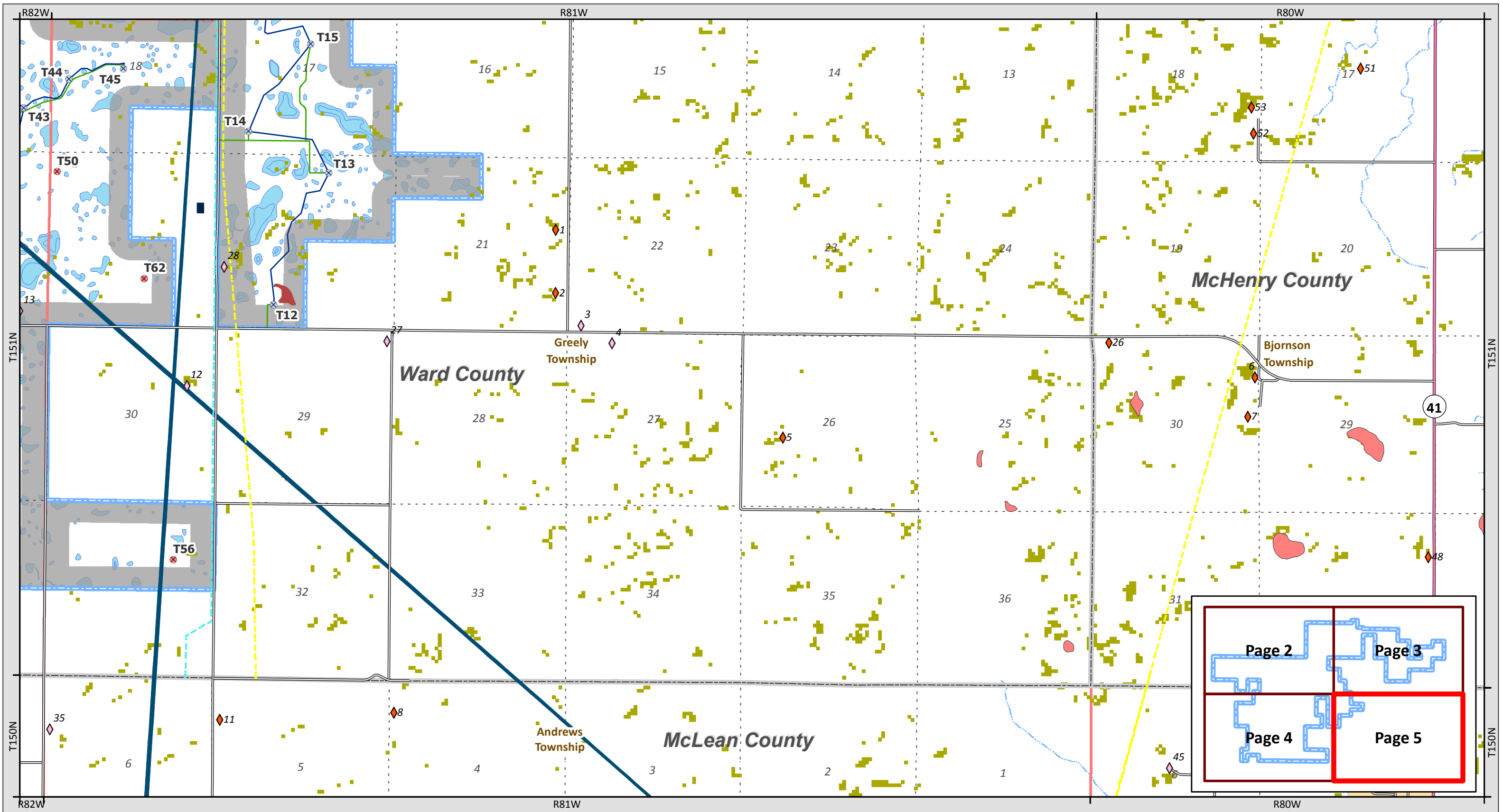
KLJ Project Number: 1809-00886
Date Created: 5/17/2019 Created By: JDP

Wind Project Constraints Ruso Wind Project

Ward County, ND
Page 4 of 5

Confidential cultural resource information not included.

- Project Area
- Residence (Non-Participating)
- Residence (Participating)
- Primary Turbine (Layout 25)
- Alternate Turbine (Layout 25)
- Collector Line
- Access Road
- Roads
- Section
- Township
- County Boundary
- Streams
- NWI Wetlands
- Woodlands
- Field Assessed Wetlands
- USFWS WPA
- Non-Participating Property
- Microwave Beam Fresnel Zones
- Electric Transmission Line (<115 kV)
- Electric Transmission Line (115+ kV)
- Military Installation
- Commission, County & Township Setbacks



KLJ **Southern Power**

0 0.25 0.5 1 Miles

1:33,000

KLJ Project Number: 1809-00886
Date Created: 5/17/2019 Created By: JDP

Wind Project Constraints

Ruso Wind Project

Ward County, ND

Page 5 of 5

Confidential cultural resource information not included.

Project Area	State Highway	Non-Participating Property
Residence (Non-Participating)	Section	Microwave Beam Fresnel Zones
Residence (Participating)	Township	Electric Transmission Line (<115 kV)
Primary Turbine (Layout 25)	County Boundary	Electric Transmission Line (115+ kV)
Alternate Turbine (Layout 25)	NWI Wetlands	Military Installation
Collector Line	Woodlands	Commission, County & Township Setbacks
Access Road	Field Assessed Wetlands	
Roads	Historic Landslide	