

April 24, 2019

Darrel Nitschke
Executive Director
North Dakota Public Service Commission
600 East Boulevard; Department 408
Bismarck, ND 58505-0480

Dear Mr. Nitschke:

RE: Basin Electric Power Cooperative (**Basin Electric**) - Case No. PU-11-696

In accordance with the North Dakota Century Code 49-22-03 (3)(a)(4), enclosed please find a notarized certification indicating any improvement activities of the subject transmission line will not affect any known exclusion or avoidance areas as defined in North Dakota Administrative Code 69-06-08-02 (1) and (2). Basin Electric will comply with all applicable conditions and protections in siting laws and rules and commission orders previously issued.

Coteau Properties Company is planning to begin surface mining in an area containing the original Basin Electric - Antelope Valley Station (**AVS**) to Charlie Creek 345-kV transmission line (Line 152). To accommodate this planned expansion of the Freedom Mine, Basin Electric must remove seven existing structures (Structure numbers 152-260, 152-161, 152-162, 152-263, 152-264, 152-265, and 152-266) and install one new structure (152-259A) in the existing Line 152 right-of-way. The attached map depicts the portions of Line 152 to be removed, the location of the new structure, and the small amount of new right-of-way to be added. Basin Electric must also string conductor between existing structures 152-267 (single circuit) and 319-012 (double circuit). Structure 319-002 was constructed to accommodate a double circuit configuration, in anticipation of the removal of the Line 152 structures for the mine expansion.

If you have any questions or require additional information, please contact me at 701.557.5495.

Sincerely,

A handwritten signature in blue ink, appearing to read "K. Solie".

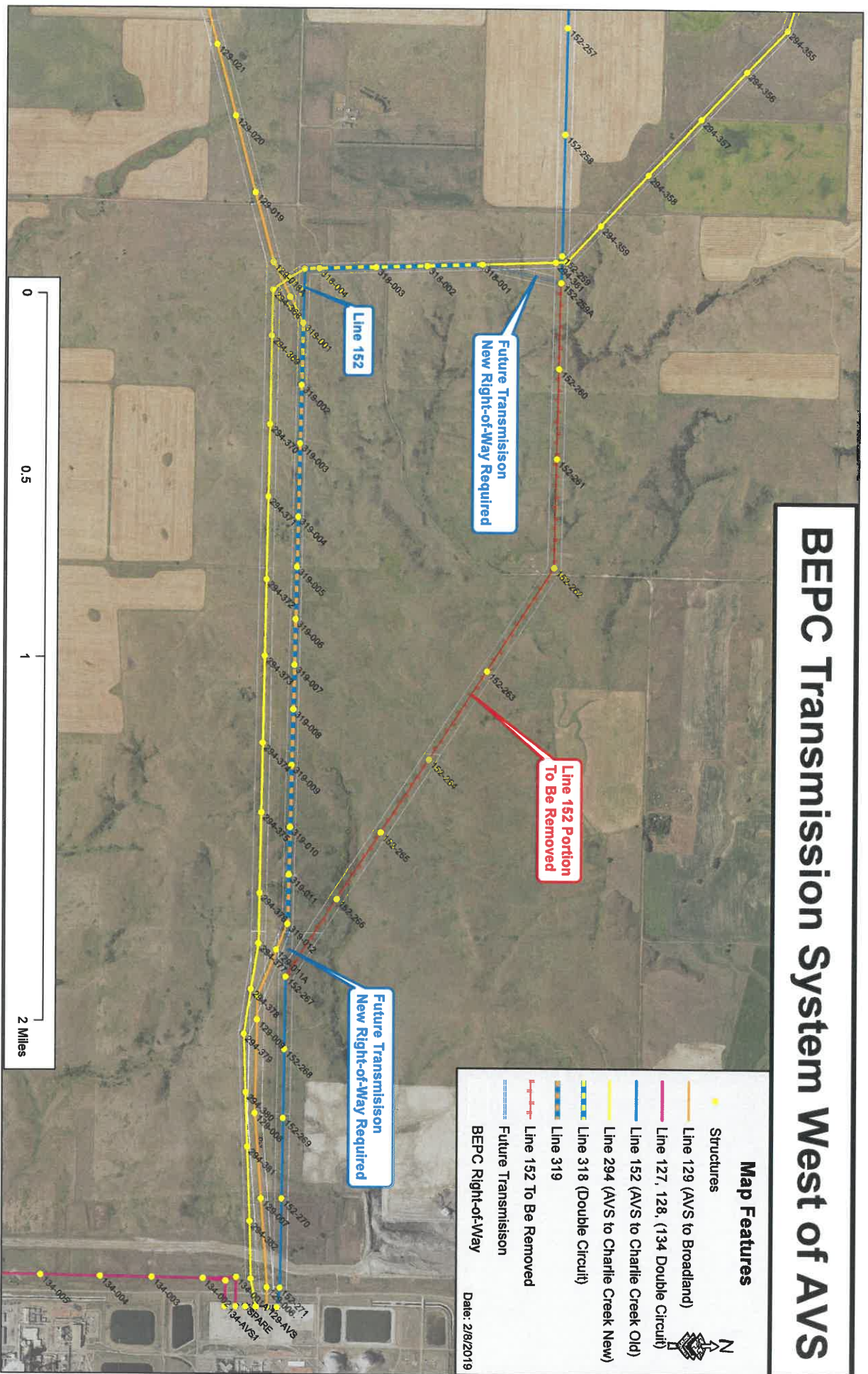
Kevin L. Solie, P.E.
Senior Environmental Compliance Administrator

/sw

Enclosures

1 PU-19-142 Filed 04/24/2019 Pages: 3
Certification and documentation relating to N.D.C.C. Section 49-22-03(3)(a)(4)
Basin Electric Power Cooperative
Kevin Solie, P.E.

BEPC Transmission System West of AVS



Map Features

- Structures
- Line 129 (AVS to Broadland)
- Line 127, 128, (134 Double Circuit)
- Line 152 (AVS to Charlie Creek Old)
- Line 294 (AVS to Charlie Creek New)
- Line 318 (Double Circuit)
- Line 319
- Line 152 To Be Removed
- Future Transmission
- BEPC Right-of-Way

Date: 2/8/2019

