

allow up to 25,000 barrels per day of NGLs produced at plants upstream from the Tie-in to be diverted from ONEOK's Garden Creek Lateral (Case No. PU-11-066) to the Original Facilities (activities described above collectively herein, "Improvements").

4. The purpose of the Improvements is to divert NGLs from the ONEOK Garden Creek Lateral to the Original Facilities and thus allowing for additional capacity on the Garden Creek Lateral.
5. Activities for the Improvements will occur within the permitted corridor as designated by the Order issued for ONEOK's Original Facilities, as well as areas within the previously permitted site for the Lonesome Creek Gas Plant (Case No. PU-14-218) and the Lonesome Creek NGL Pipeline (Case No. PU-15-137). Therefore, activities for the Improvements will occur wholly within the geographic boundaries of ONEOK's previously issued certificates. *See* N.D.C.C. § 49-22.1-01(3)(a). Improvements occur within previously surveyed areas and will not affect any known Exclusion or Avoidance Areas set forth in N.D. Admin. Code § 69-06-08-02. *See* N.D.C.C. § 49-22.1-01(3)(a)(4)(a).
6. Construction for the Improvements is for the same type of facility as the Original Facility. *See* N.D.C.C. § 49-22.1-01(3)(a)(4)(b); *see e.g.* Order, Finding of Fact Nos. 2-6.
7. ONEOK will continue to comply with all applicable conditions and protections in the siting laws and rules and the Commission's Order, as well as all applicable federal, state, and local laws and rules. *See* N.D.C.C. § 49-22.1-01(3)(a)(4)(c).
8. ONEOK intends to begin activities to install the Improvements in May 2019 with an estimated in-service date of July 2019.
9. Attached to this Certification and incorporated herein as Exhibits 1 through 4 are diagrams depicting the scope and location of the Improvements.

[Remainder of document intentionally left blank]

Lonesome Creek

N47.77°

10598

Flow will be reversed up the Lonesome Creek Lateral by removing the check valve at the Garden Creek Lateral tie-in location. New pump will be installed at Lonesome Creek and pump barrels into the Cherry Creek piping.

Redwing Rd

W103.57°

W103.55°

W103N47.75°

W103.51°

W1

27

Caliber Mid

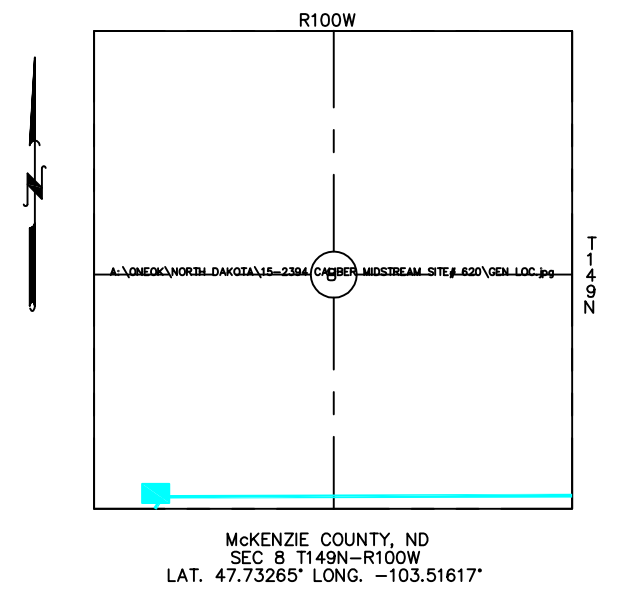
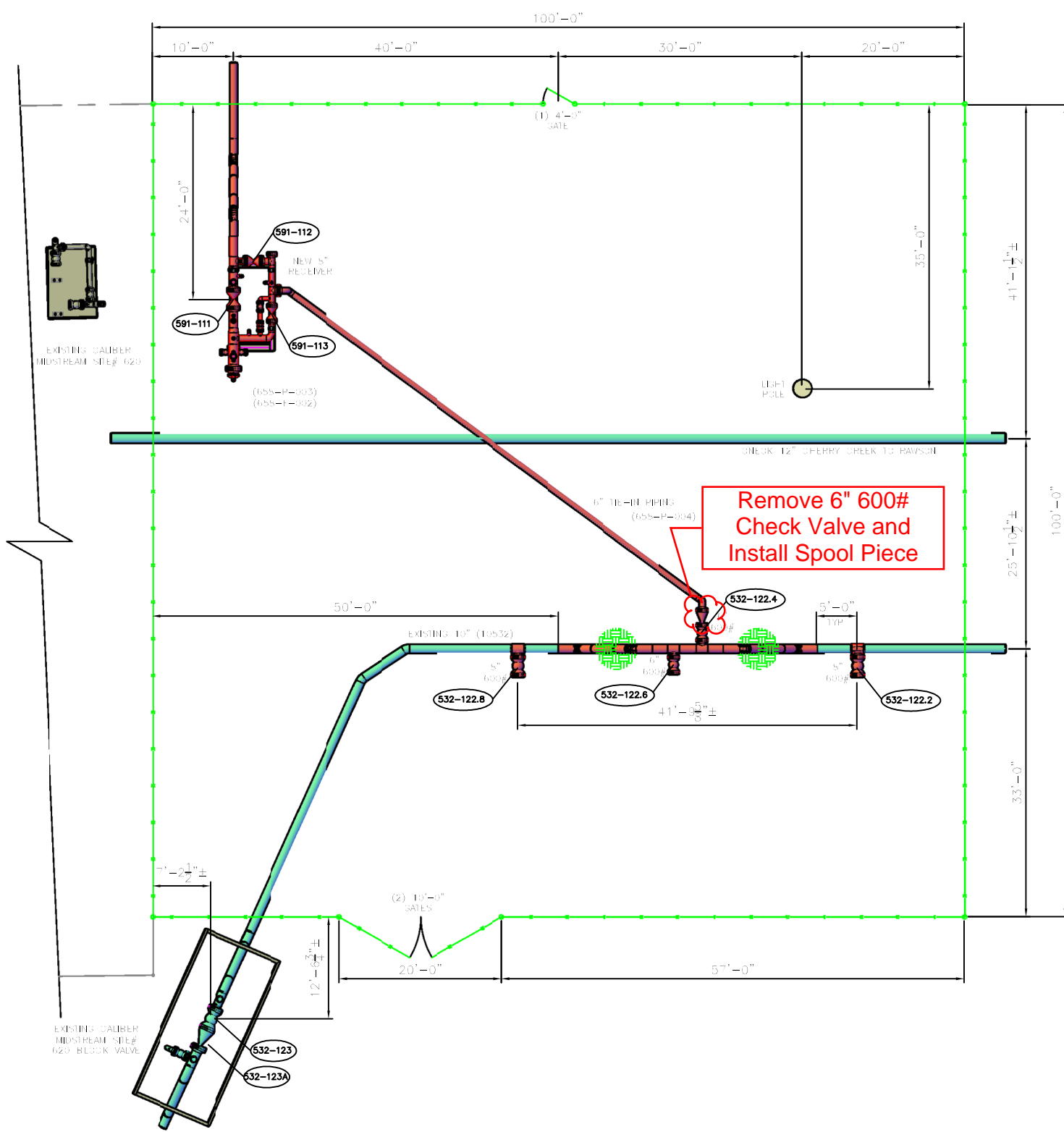
© 2018 Google

N47.73°

Lonesome Creek to Garden Creek Tie-In

EXHIBIT 1

1



Lonesome Creek to Garden Creek Tie-In. (South End of Lonesome Creek Pipeline). Check valve will be removed to allow flow to reverse.

NOTE:
ALL UNDERGROUND PIPING IS APPROX.
AND ASSUMED.

EXHIBIT 2

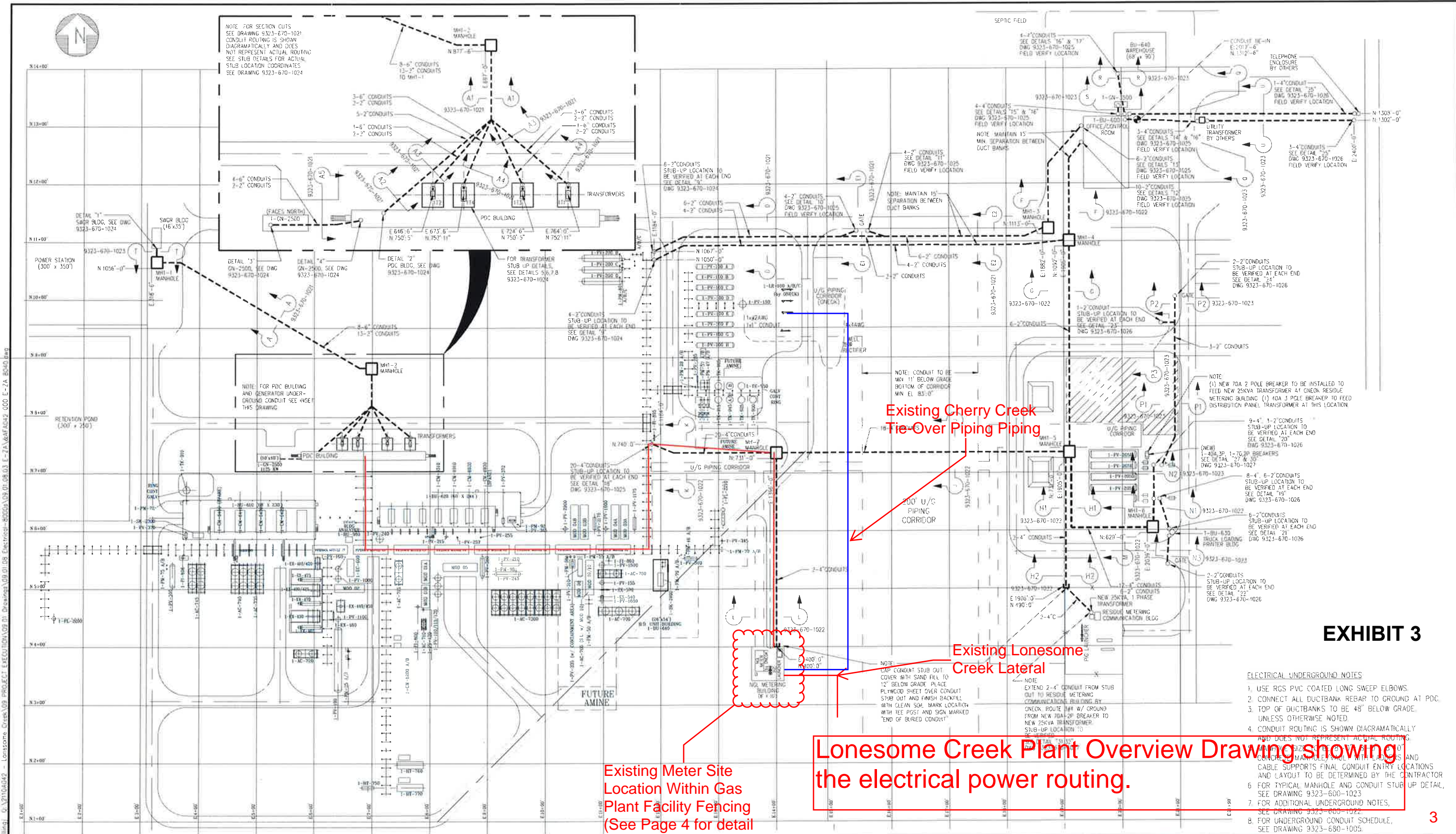
MK	DATE	REVISIONS	BY	AP.	MK	DATE	REVISIONS	BY	AP.
1	3/23/15	RELOCATED GATES	MBC		8				
2	3/26/15	GENERAL REVISIONS	MBC		9				
3	4/10/15	REVISED GARDEN CREEK TIE-IN	MBC		10				
4	4/13/15	GENERAL REVISIONS	MBC		11				
5	1/27/16	ADDED VALVE NUMBERS	TDS		12				
6	5/4/17	ADDED VALVE NUMBERS	TDS		13				
7	4/15/19	REMOVED TEMPORARY PIPING	TDS		14				

NOTICE
This drawing has not been published and is the sole property of ONEOK HYDROCARBON LP, Box 29 Medford, Ok., and is loaned to the borrower for his confidential use only; and in consideration of the loan of this drawing the borrower promises and agrees that it shall not be reproduced, copied, loaned, or otherwise disposed of directly or indirectly, nor used for any purpose other than for which it is specifically furnished.

DWG. NO.	REFERENCE DRAWINGS

ONEOK
HYDROCARBON, L.P.
P.O. BOX 29
MEDFORD, OK 73759

LONESOME CREEK TIE-IN SITE# 658 OVERALL SITE LAYOUT			
DES.:	AFE#:	DATE:	4/15/15
DR.:	MBC	DWG. NO.:	658-O-001
CH.:	SCALE: 1/8"=1'		
AP.:	CAD#:		
		REV.:	7



Existing Cherry Creek Tie-Over Piping

300' U/G PIPING CORRIDOR

Existing Lonsome Creek Lateral

Existing Meter Site Location Within Gas Plant Facility Fencing (See Page 4 for detail on proposed layout)

Lonsome Creek Plant Overview Drawing showing the electrical power routing.

EXHIBIT 3

- ELECTRICAL UNDERGROUND NOTES**
1. USE RGS PVC COATED LONG SWEEP ELBOWS.
 2. CONNECT ALL DUCTBANK REBAR TO GROUND AT PDC.
 3. TOP OF DUCTBANKS TO BE 48" BELOW GRADE, UNLESS OTHERWISE SHOWN.
 4. CONDUIT ROUTING IS SHOWN DIAGRAMMATICALLY AND DOES NOT REPRESENT ACTUAL ROUTING. MINIMUM SIZE SHALL BE 12" O.D. CONCRETE MANHOLE/POLE WITH LADDERS AND CABLE SUPPORTS FINAL CONDUIT ENTRY LOCATIONS AND LAYOUT TO BE DETERMINED BY THE CONTRACTOR.
 5. FOR TYPICAL MANHOLE AND CONDUIT STUB UP DETAIL, SEE DRAWING 9323-600-1023.
 6. FOR ADDITIONAL UNDERGROUND NOTES, SEE DRAWING 9323-600-1022.
 7. FOR UNDERGROUND CONDUIT SCHEDULE, SEE DRAWING 9323-600-1005.

The reproduction, distribution and utilization of this document as well as the communication of its contents to others without express authorization is prohibited. Offenders will be held liable for the payment of damages. All rights reserved in the event of the grant of a patent utility model or design. Refer to protection notice 15016016.

Linde
Linde Process Plants, Inc.

PROJECT NO. 4AF2110A042
LPP DWG. 4AF042 000-EZA-8040

NO.	DATE	DESCRIPTION	BY	CHKD	APPROD
6	07/08/15	REMOVED CONDUITS FROM EAST WALL OF MH-5	CLT	JWC	HLA
5	04/07/15	ADDED FEEDER TO NGL MESSINA GAS METERING BUILDING	HLK	JWC	HLA
4	01/21/15	RELOCATED 750KVA FEEDER & REVISED TELEPHONE UTILITY CONDUITS	HLK	JWC	HA
3	01/13/15	ADDED TELEPHONE PEDESTAL AND CONDUIT AS NOTED	HLK	JWC	HA
2	10/14/14	ADDED CONDUIT FROM UTILITY TRANSFORMER TO TE-IN AT ROAD	HLK	JWC	HA
1	09/18/14	REVISED CONTROL ROOM CONDUIT	HLK	JWC	HA
8	12/14/16	REVISED PER MOC-LCP-2016-006	RTL	JES	HA
7	06/07/16	AS-BUILT	MS	JWC	HLA

NO.	DATE	DESCRIPTION	BY	CHKD	APPROD
6	07/08/15	REMOVED CONDUITS FROM EAST WALL OF MH-5	CLT	JWC	HLA
5	04/07/15	ADDED FEEDER TO NGL MESSINA GAS METERING BUILDING	HLK	JWC	HLA
4	01/21/15	RELOCATED 750KVA FEEDER & REVISED TELEPHONE UTILITY CONDUITS	HLK	JWC	HA
3	01/13/15	ADDED TELEPHONE PEDESTAL AND CONDUIT AS NOTED	HLK	JWC	HA
2	10/14/14	ADDED CONDUIT FROM UTILITY TRANSFORMER TO TE-IN AT ROAD	HLK	JWC	HA
1	09/18/14	REVISED CONTROL ROOM CONDUIT	HLK	JWC	HA
8	12/14/16	REVISED PER MOC-LCP-2016-006	RTL	JES	HA
7	06/07/16	AS-BUILT	MS	JWC	HLA

NO.	DATE	DESCRIPTION	BY	CHKD	APPROD
6	07/08/15	REMOVED CONDUITS FROM EAST WALL OF MH-5	CLT	JWC	HLA
5	04/07/15	ADDED FEEDER TO NGL MESSINA GAS METERING BUILDING	HLK	JWC	HLA
4	01/21/15	RELOCATED 750KVA FEEDER & REVISED TELEPHONE UTILITY CONDUITS	HLK	JWC	HA
3	01/13/15	ADDED TELEPHONE PEDESTAL AND CONDUIT AS NOTED	HLK	JWC	HA
2	10/14/14	ADDED CONDUIT FROM UTILITY TRANSFORMER TO TE-IN AT ROAD	HLK	JWC	HA
1	09/18/14	REVISED CONTROL ROOM CONDUIT	HLK	JWC	HA
8	12/14/16	REVISED PER MOC-LCP-2016-006	RTL	JES	HA
7	06/07/16	AS-BUILT	MS	JWC	HLA

ONEOK PARTNERS
ONEOK Rockies Midstream, L.L.C.

UNDERGROUND CONDUIT PLAN

200 MMSCFD LIQUID RECOVERY UNIT
LONESOME CREEK GAS PLANT - TRAIN 1
McKENZIE COUNTY, ND

10/10/2015 14:05:34 By: jllm101 @ 10/10/2015 14:05:34 Electrical-09010108-03 E-ZA 8040 Dwg
 Lonsome Creek Plant Overview Drawing showing the electrical power routing.

Proposed Site Layout at Lonesome Creek Facility where new pump, leak detection meter skid and building will be installed

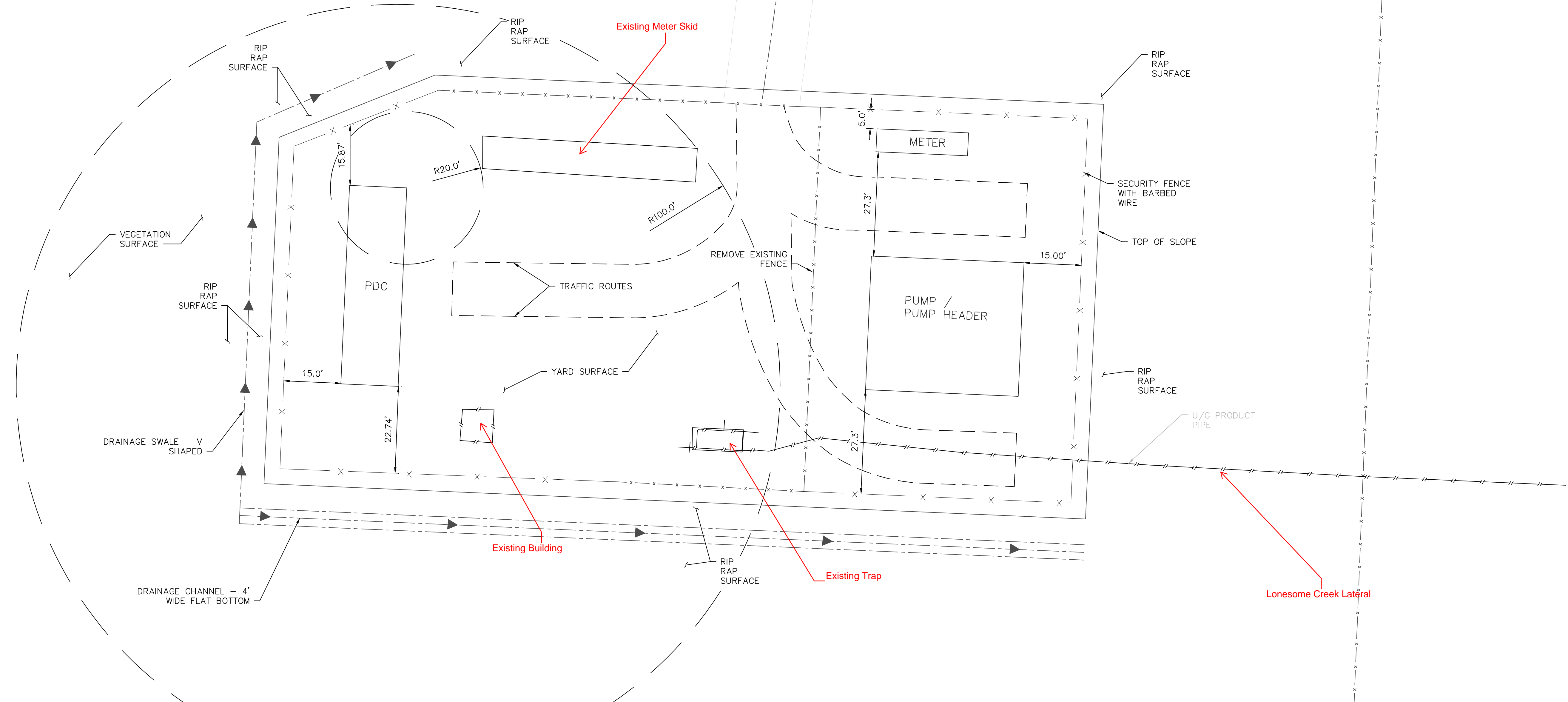
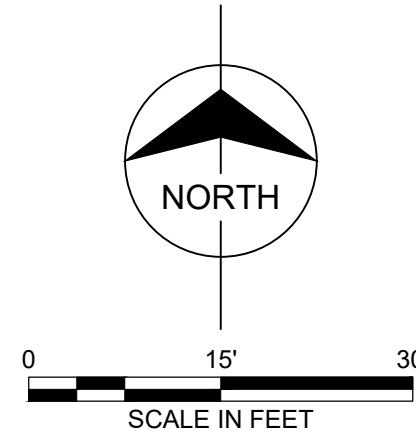


EXHIBIT 4

PRELIMINARY - NOT FOR CONSTRUCTION



**CHERRY CREEK PHASE II
PRELIMINARY
ENLARGED SITE PLAN**

DES.: ####	AFE#: ####	DATE: 04/12/19	REV. A
DR.: ####	REFIN. JOB#: ####	DWG. NO.:	
CH.: ####	SCALE: 1"=15'	SKA-01	
AP.: ####	CAD#: SKA-01		



MK	DATE	REVISIONS	BY	AP.	MK	DATE	REVISIONS	BY	AP.
A	04/12/19	ISSUED FOR REVIEW	TAB	JAL					

NOTICE
This drawing has not been published and is the property of ONEOK PARTNERS LP, 100 W. FIFTH ST., TULSA, OKLA., and is loaned to the borrower for his confidential use only; and in consideration of the loan of this drawing the borrower promises and agrees that it shall not be reproduced, copied, loaned, or otherwise disposed of directly or indirectly, nor used for any purpose other than for which it is specifically furnished.

DWG. NO.	REFERENCE DRAWINGS

COPYRIGHT 2019 BURNS & MCDONNELL ENGINEERING COMPANY, INC.