

6. Pursuant to N.D.C.C. § 49-22.1-01(3)(a)(4),
- a. Installation of the Improvement will not affect any known Exclusion or Avoidance Areas;
 - b. Activities are for installation of an improvement to the existing Plant to increase Plant capacity; and,
 - c. ONEOK will continue to comply with the Order issued in this case and will continue to comply with all applicable conditions and protections in siting laws and rules and Commission orders previously issued for any part of the Plant.
7. ONEOK intends to begin activities for installation of the Improvement in May with an estimated in-service date in July 2019.

ONEOK ROCKIES MIDSTREAM, L.L.C.

By 
 David Roensch

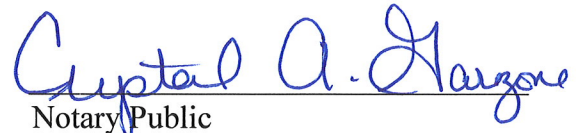
Its Vice-President – Natural Gas Gathering
 and Processing Operations

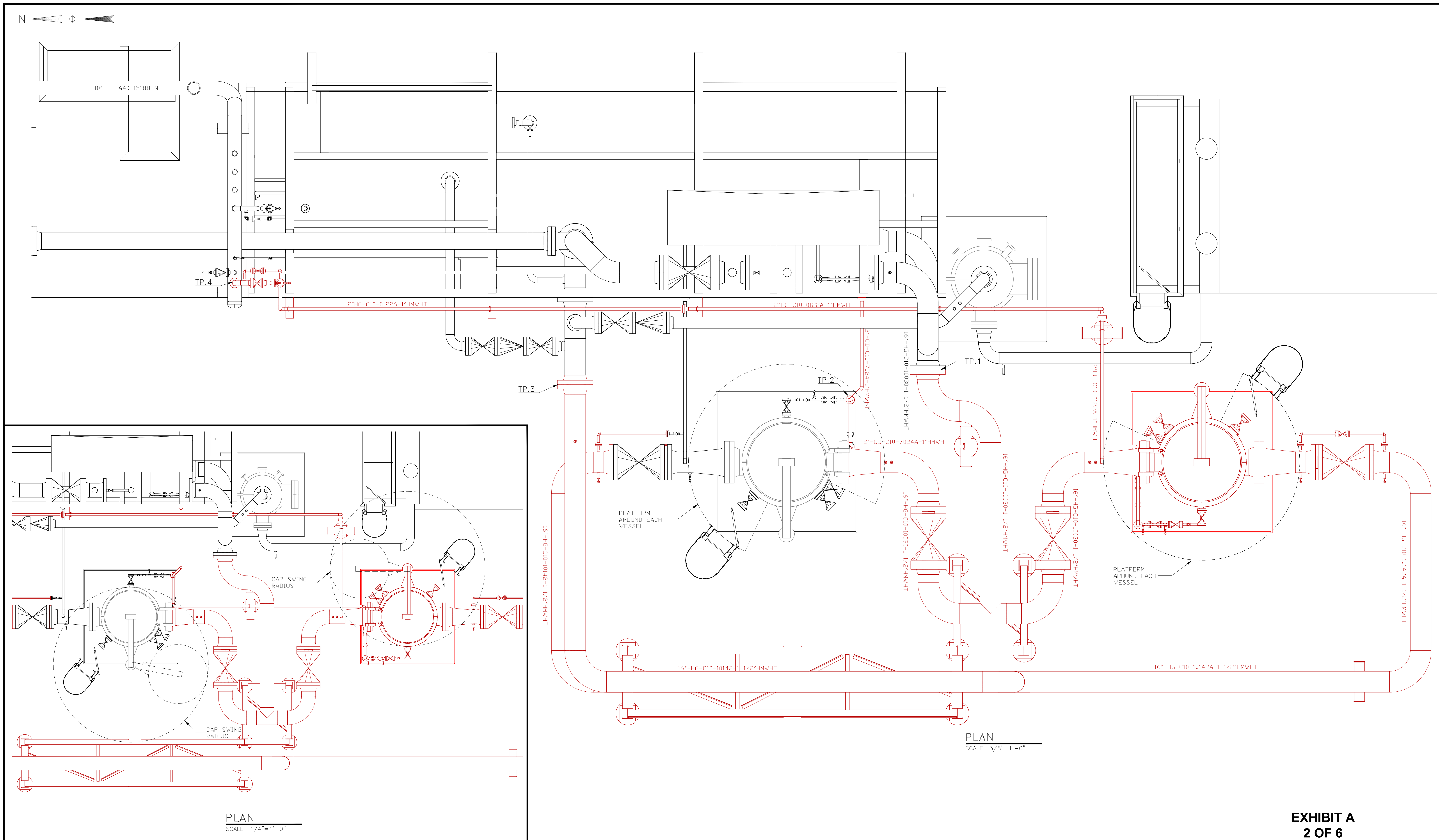


STATE OF OKLAHOMA)
) ss.
 COUNTY OF TULSA)

On this 13 day of May, 2019, before me personally appeared David Roensch, known to me to be the Vice-President - Natural Gas Gathering and Processing Operations, of the limited liability company that is described in and that executed the within instrument, and acknowledged to me that such limited liability company executed the same.

CRYSTAL A. GARZONE
NOTARY PUBLIC
STATE OF OKLAHOMA
COMMISSION #01020626
MY COMM. EXPIRES 01/24/22
 Expiration of Commission


 Notary Public



PLAN
SCALE 1/4"=1'-0"

PLAN
SCALE 3/8"=1'-0"

- NOTES:
- 1) CONTRACTOR TO FIELD VERIFY ALL DIMENSIONS, AND ELEVATIONS PRIOR TO FABRICATION
 - 2) FIELD TO DETERMINE SUPPORTS AND LOCATIONS AS NEEDED
 - 3) PROPOSED NEW MATERIAL IS SHOWN IN RED ON ALL DRAWINGS
 - 4) CONTRACTOR TO FACTOR IN WELD GAP ON DIMENSIONS

*ISSUED FOR
 BID*
 Mar 19, 2019

REVISIONS				DTR		FWNSP RING		SEC INITIAL PRINT		BLK NAME		BLK NO		ORIGINAL DWG BY:	
NO.	DATE	DESCRIPTION	BY	CHD	APRD	SURVY NAME	SURVY NO	ABSTRACT NAME	ABSTRACT NO	DATE	DES BY	APRD BY	SURVY BY	SCALE	DISCLOSURE STATEMENT:
A	1-23-19	ISSUED FOR APPROVAL	ES	SB											This design/drawing is proprietary property of ONEOK, Inc. and ONEOK Partners, LP. This document is for evaluation purposes only. Any reproduction or other use is strictly prohibited unless authorized in writing by ONEOK or ONEOK Partners. This document shall be returned upon request.
B	3/14/19	ISSUED FOR APPROVAL - PIPING CHANGE (BETWEEN FILTERS)	ES	SB											
C	3/19/19	ISSUED FOR BID - STRUCTURAL STEEL/SUPPORTS	ES	SB											
PROJECT NAME: _____ SCALE: NONE AFE NO: _____ CAD NO: _____ DWG NO: 9323-210-1393 REV: --															

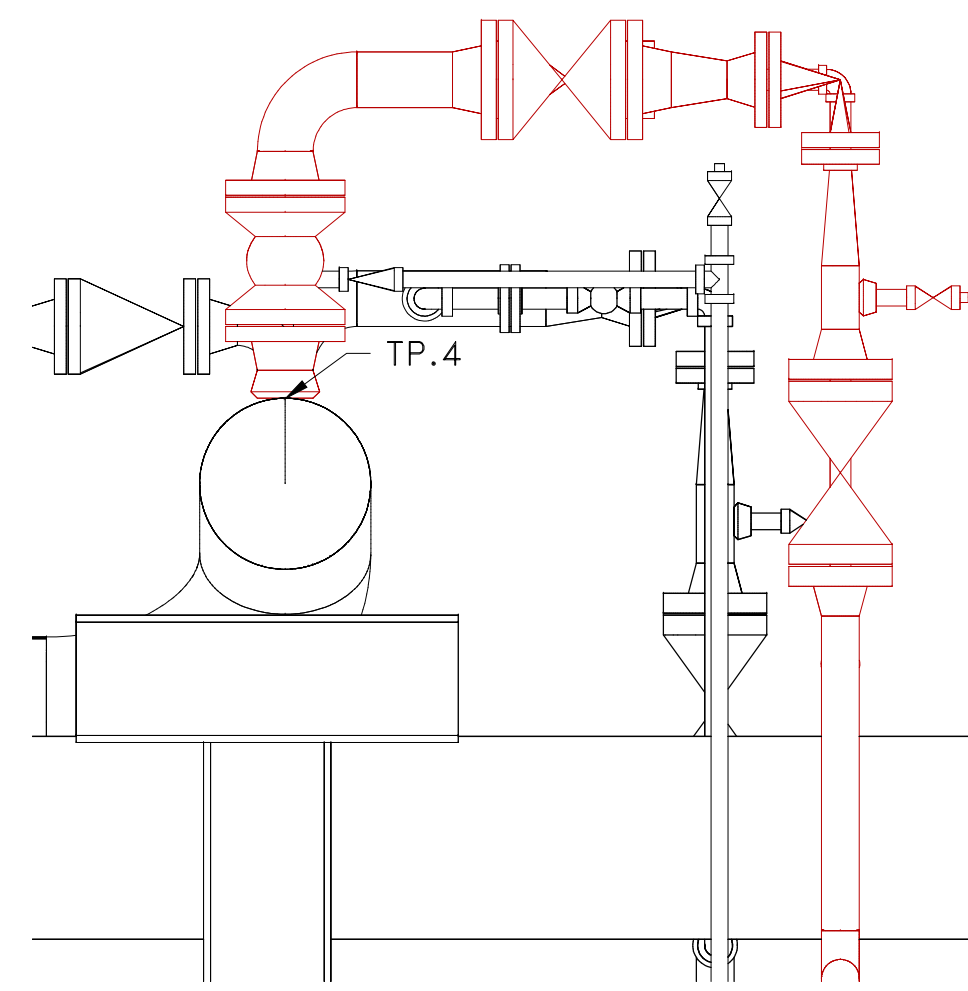
**EXHIBIT A
2 OF 6**



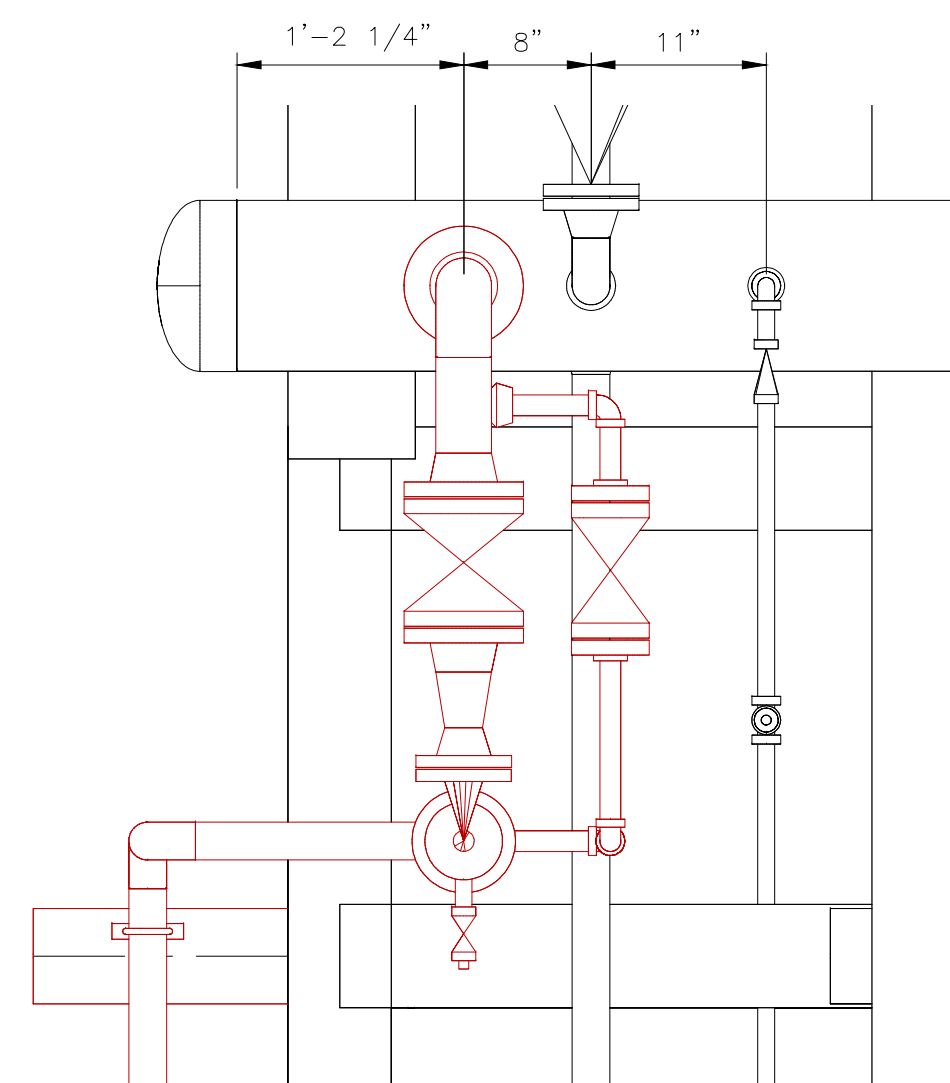
NGGP

AREA PIPING PLAN
IF-800A INSTALLATION
PLATFORM AND CLOSURE DETAIL

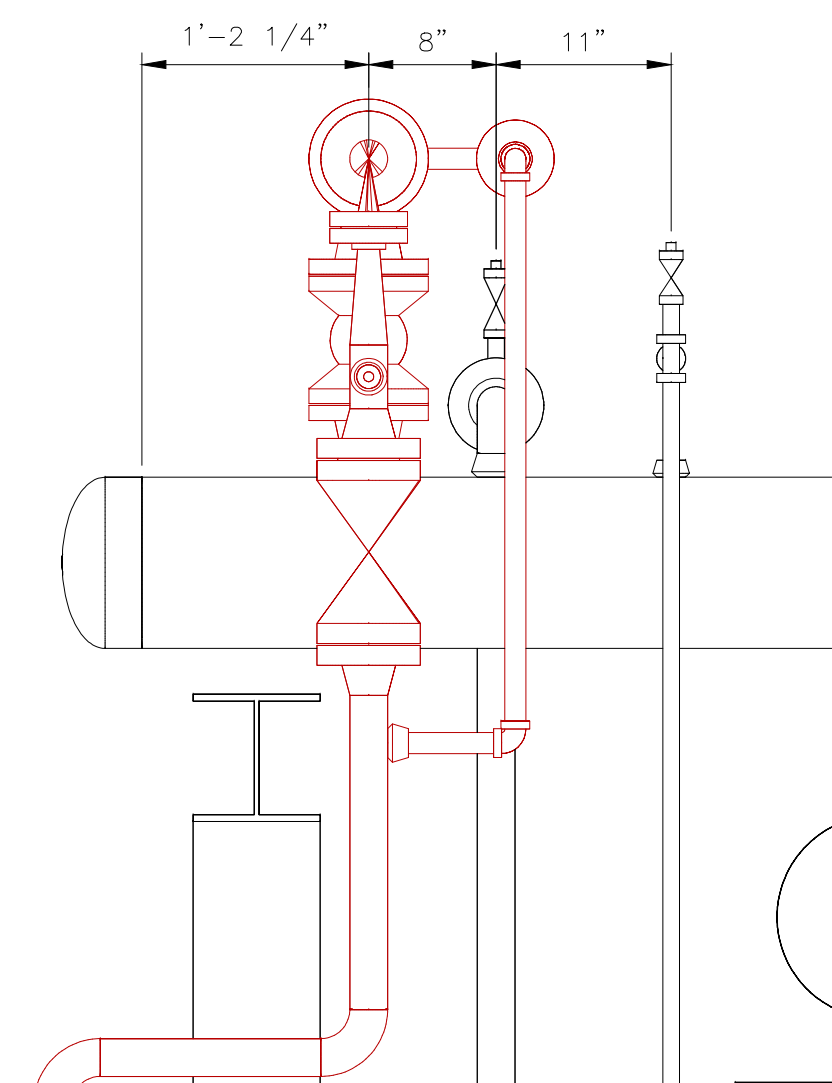
LONESOME CREEK PLANT MCKENZIE CO., B



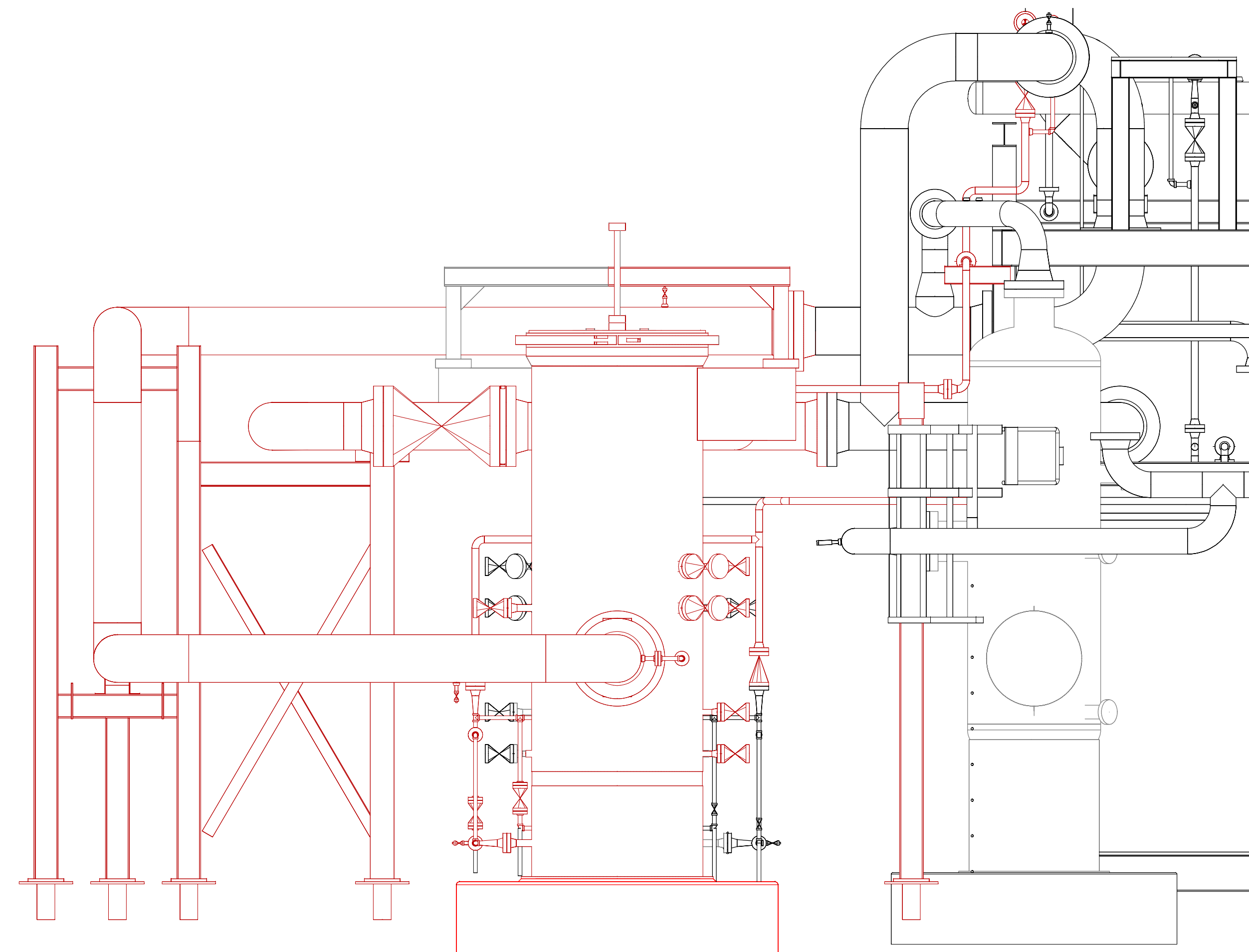
DETAIL
SCALE 1"=1'-0"
LOOKING EAST



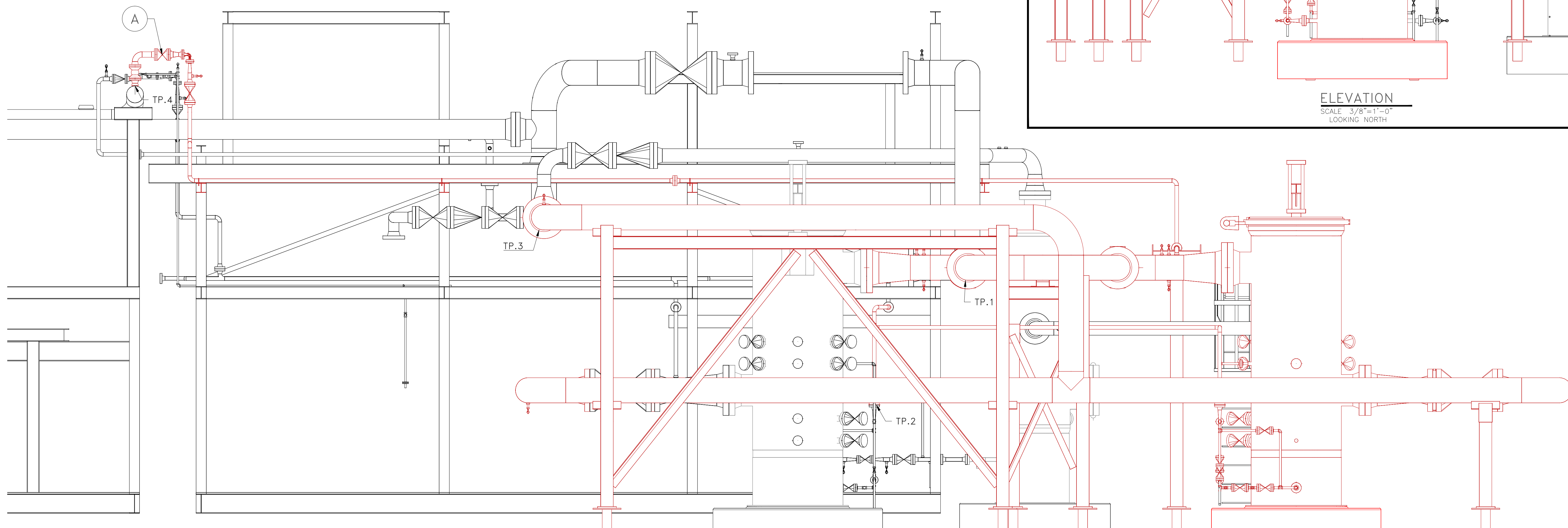
DETAIL
SCALE 1"=1'-0"
PLAN VIEW



DETAIL
SCALE 1"=1'-0"
LOOKING NORTH



ELEVATION
SCALE 3/8"=1'-0"
LOOKING NORTH



ELEVATION
SCALE 1/4"=1'-0"
LOOKING EAST

EXHIBIT A
3 OF 6

NOTES:

- 1) CONTRACTOR TO FIELD VERIFY ALL DIMENSIONS, AND ELEVATIONS PRIOR TO FABRICATION
- 2) FIELD TO DETERMINE SUPPORTS AND LOCATIONS AS NEEDED
- 3) PROPOSED NEW MATERIAL IS SHOWN IN RED ON ALL DRAWINGS
- 4) CONTRACTOR TO FACTOR IN WELD GAP ON DIMENSIONS

'ISSUED FOR
 BID'
 Mar 19, 2019

REVISIONS				DTR		FWNSP		SEC		INITIAL PRINT		BLK NAME		BLK NO		ORIGINAL DWG BY:	
NO.	DATE	DESCRIPTION	BY	CHD	APRD	SURVY NAME	SURVY NO	ABSTRACT NAME	ABSTRACT NO	DATE	DES BY	APRD BY	SURVY BY	SCALE	PROJECT NAME	DWG NO	REV.
A	1-23-19	ISSUED FOR APPROVAL	ES	SB													
B	3/14/19	ISSUED FOR APPROVAL - PIPING CHANGES (BETWEEN FILTERS)	ES	SB													
C	3/19/19	ISSUED FOR BID - STRUCTURAL STEEL/SUPPORTS	ES	SB													

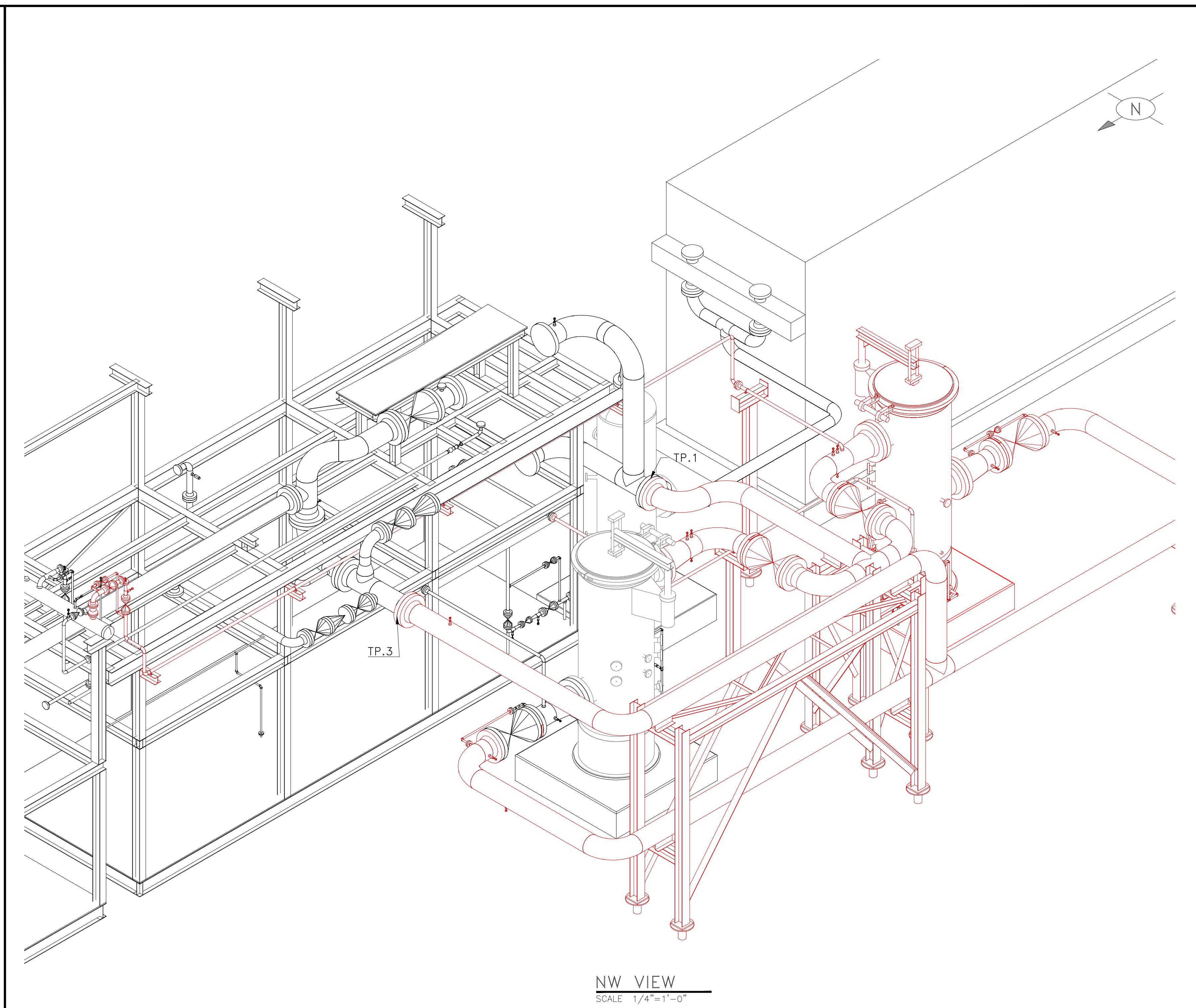
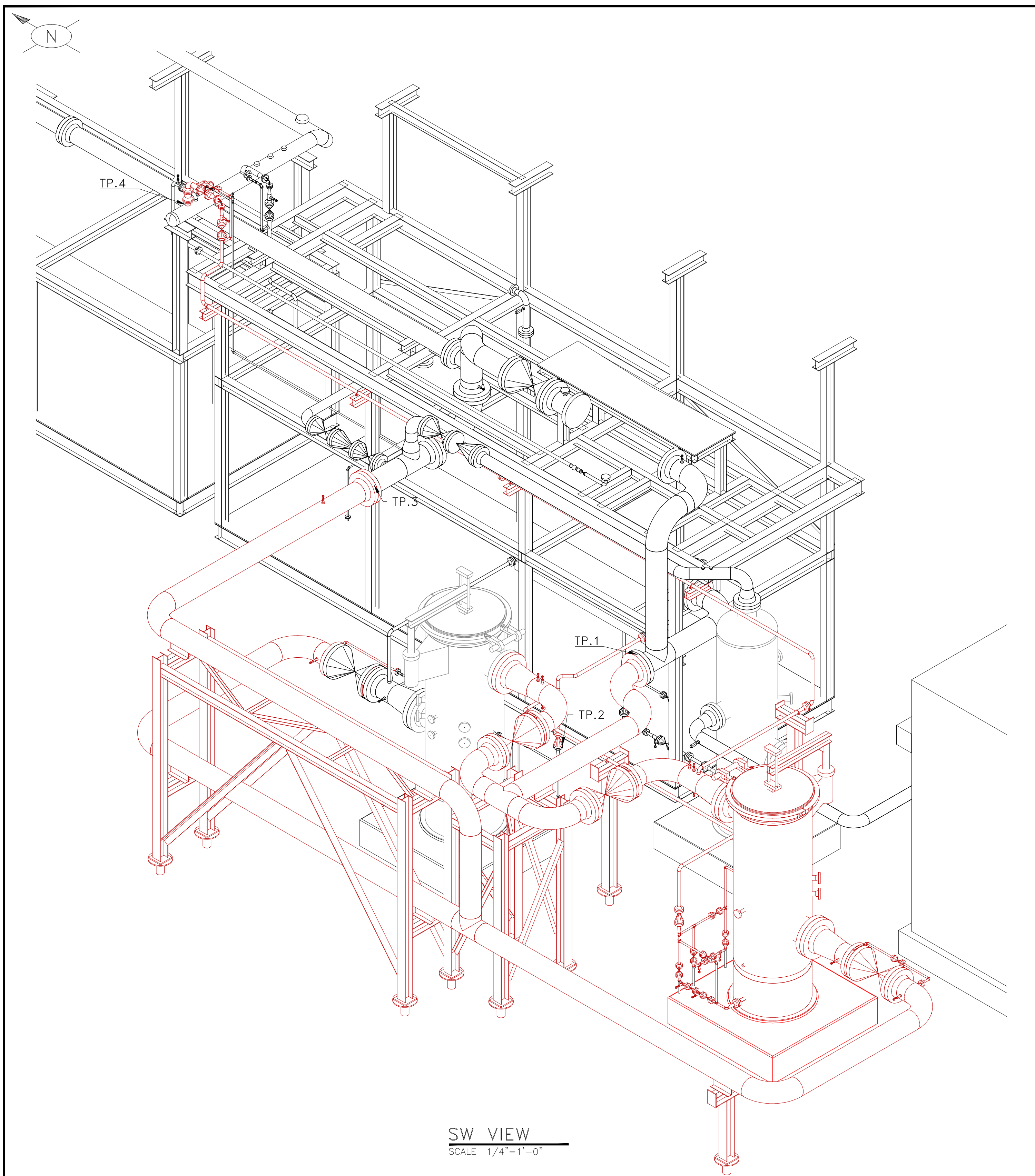


NGGP

ELEVATION - EQUIPMENT AND PIPING LAYOUT
IF-800A INSTALLATION

LONESOME CREEK PLANT

MCKENZIE CO.



NOTES:

- 1) CONTRACTOR TO FIELD VERIFY ALL DIMENSIONS, AND ELEVATIONS PRIOR TO FABRICATION
- 2) FIELD TO DETERMINE SUPPORTS AND LOCATIONS AS NEEDED
- 3) PROPOSED NEW MATERIAL IS SHOWN IN RED ON ALL DRAWINGS
- 4) CONTRACTOR TO FACTOR IN WELD GAP ON DIMENSIONS

"ISSUED FOR
 BID"
 Mar 19, 2019

REVISIONS				DTR		TWN/SP		RNGE		SEC		INITIAL POINT		BLK NAME		BLK NO		ORIGINAL DWG BY:		
NO.	DATE	DESCRIPTION	BY	CHD	APRD	SURVY NAME	SURV NO	ABSTRACT NAME	ABSTRACT NO	ORIGINAL DWG #	DISCLOSURE STATEMENT:									
A	3-19-19	ISSUED FOR APPROVAL	ES	SB							This design/drawing is proprietary property of ONEOK, Inc. and ONEOK Partners, LP. This document is for evaluation purposes only. Any reproduction or other use is strictly prohibited unless authorized in writing by ONEOK or ONEOK Partners. This document shall be returned upon request.									
B	3/14/19	ISSUED FOR APPROVAL - PIPING CHANGES (BETWEEN FILTERS)	ES	SB							DRAWN BY: [] DATE: [] DES BY: [] WPRD BY: [] SURVEY BY: []									
C	3/19/19	ISSUED FOR BID - STRUCTURAL STEEL/SUPPORTS	ES	SB							PROJECT NAME: [] SCALE: NONE									
						AFE NO:	CAD NO:	9323-210-1395	DWG NO:	9323-210-1395	REV:	---								

**EXHIBIT A
4 OF 6**

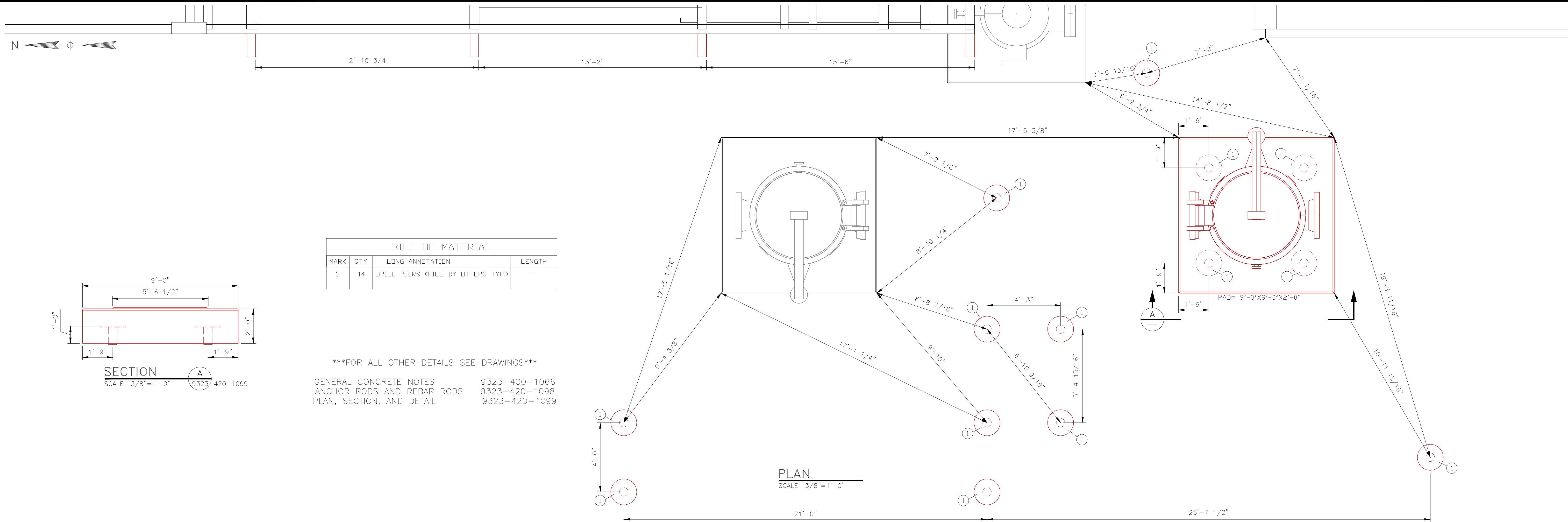


NGGP

3D VIEWS
IF-800A INSTALLATION

LONESOME CREEK PLANT

MCKENZIE CO., ND



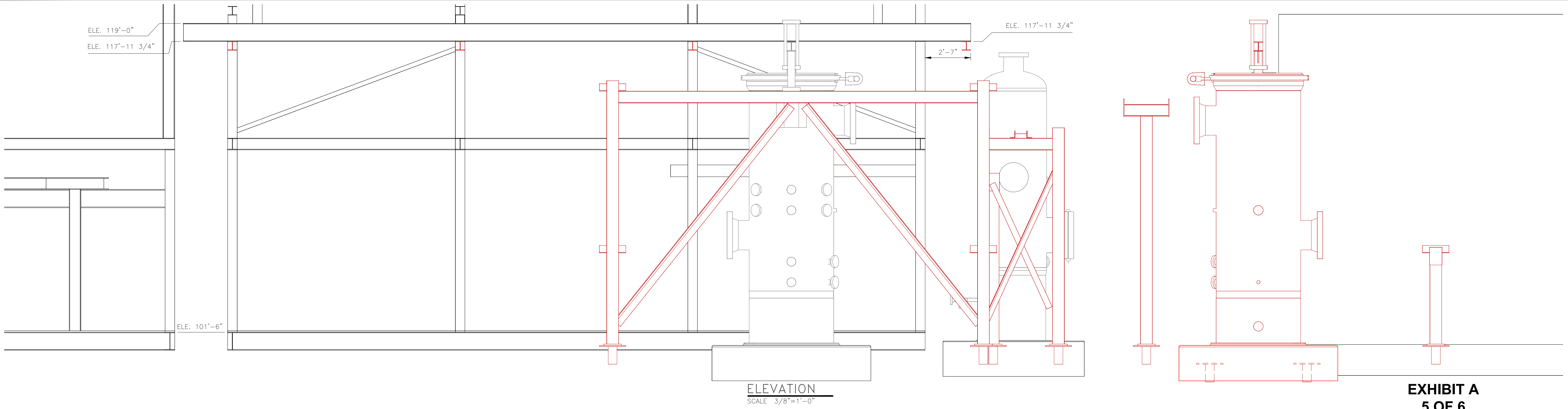
BILL OF MATERIAL			
MARK	QTY	LONG ANNOTATION	LENGTH
1	14	DRILL PIERS (PILE BY OTHERS TYP.)	--

FOR ALL OTHER DETAILS SEE DRAWINGS

GENERAL CONCRETE NOTES 9323-400-1066
 ANCHOR RODS AND REBAR RODS 9323-420-1098
 PLAN, SECTION, AND DETAIL 9323-420-1099

PLAN
 SCALE 3/8"=1'-0"

SECTION
 SCALE 3/8"=1'-0"



ELEVATION
 SCALE 3/8"=1'-0"

EXHIBIT A
5 OF 6

- NOTES:**
- 1) CONTRACTOR TO FIELD VERIFY ALL DIMENSIONS, AND ELEVATIONS PRIOR TO FABRICATION
 - 2) FIELD TO DETERMINE SUPPORTS AND LOCATIONS AS NEEDED
 - 3) PROPOSED NEW MATERIAL IS SHOWN IN RED ON ALL DRAWINGS
 - 4) CONTRACTOR TO FACTOR IN WELD GAP ON DIMENSIONS

ISSUED FOR BID
Mar 19, 2019

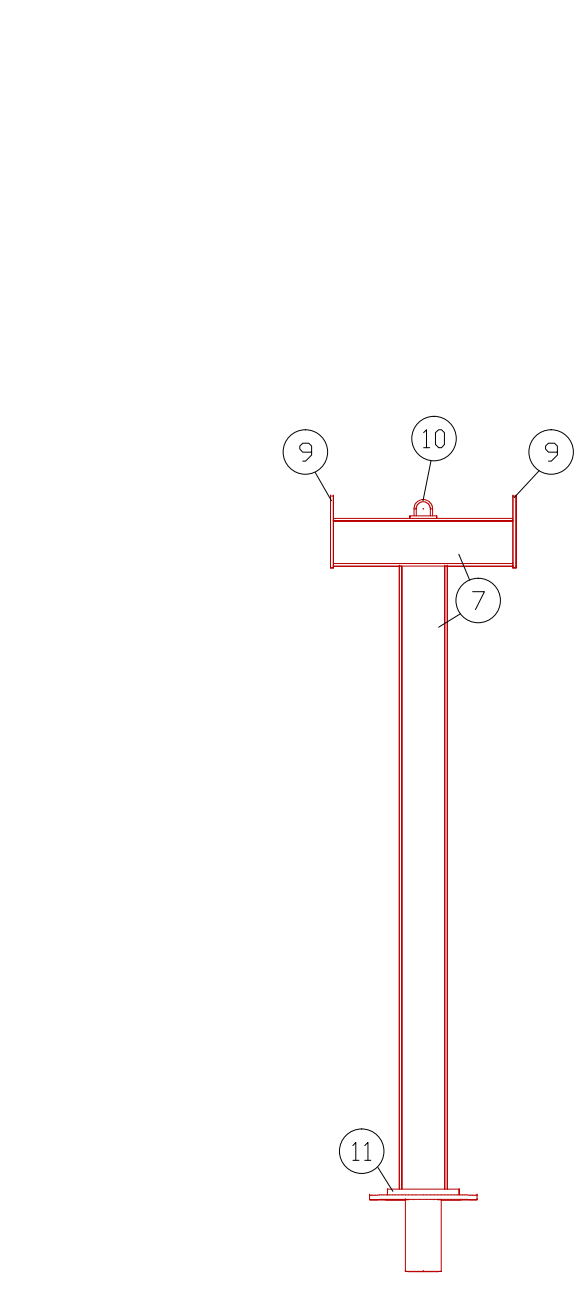
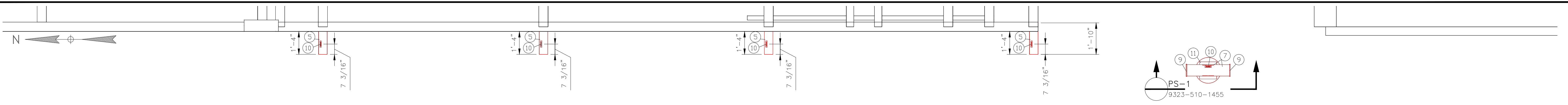
REVISIONS				PROJECT INFORMATION				DISCLOSURE STATEMENT:	
NO.	DATE	DESCRIPTION	BY	CHD	APRD	PROJECT NAME	SCALE:	This design/drawing is proprietary property of ONEOK, Inc. and ONEOK Partners, LP. This document is for evaluation purposes only. Any reproduction or other use is strictly prohibited unless authorized in writing by ONEOK or ONEOK Partners. This document shall be returned upon request.	
A	3/19/19	ISSUED FOR APPROVAL	ES	SB			NONE		
B	3/14/19	ISSUED FOR APPROVAL - PIPING CHANGES (BETWEEN FILTERS)	ES	SB					
C	3/19/19	ISSUED FOR BID - STRUCTURAL STEEL/SUPPORTS	ES	SB					

ONEOK

NGGP

EQUIPMENT AND SUPPORTS LOCATION
 IF-800A INSTALLATION

LONESOME CREEK PLANT MCKENZIE CO., ND

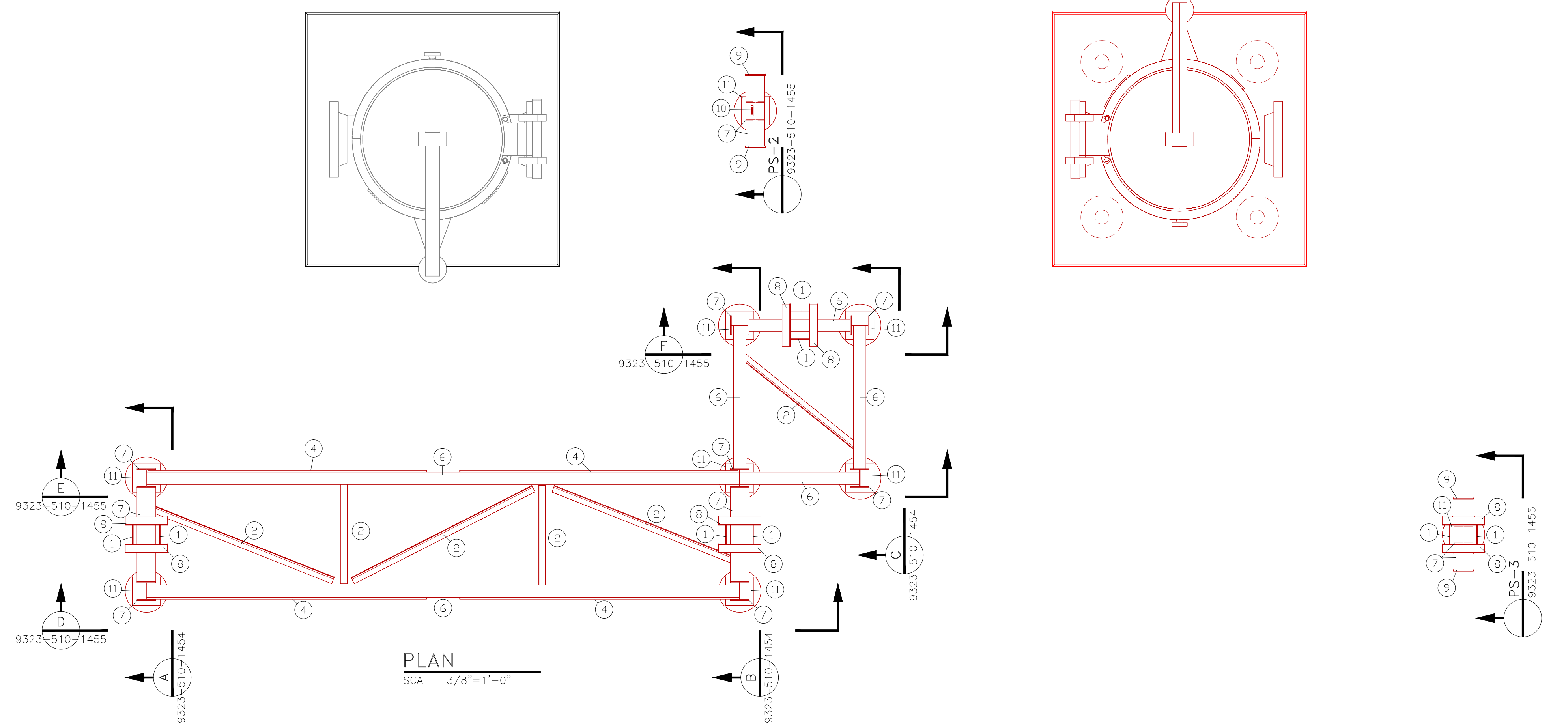


ELEVATION: PS-1 - PS-3

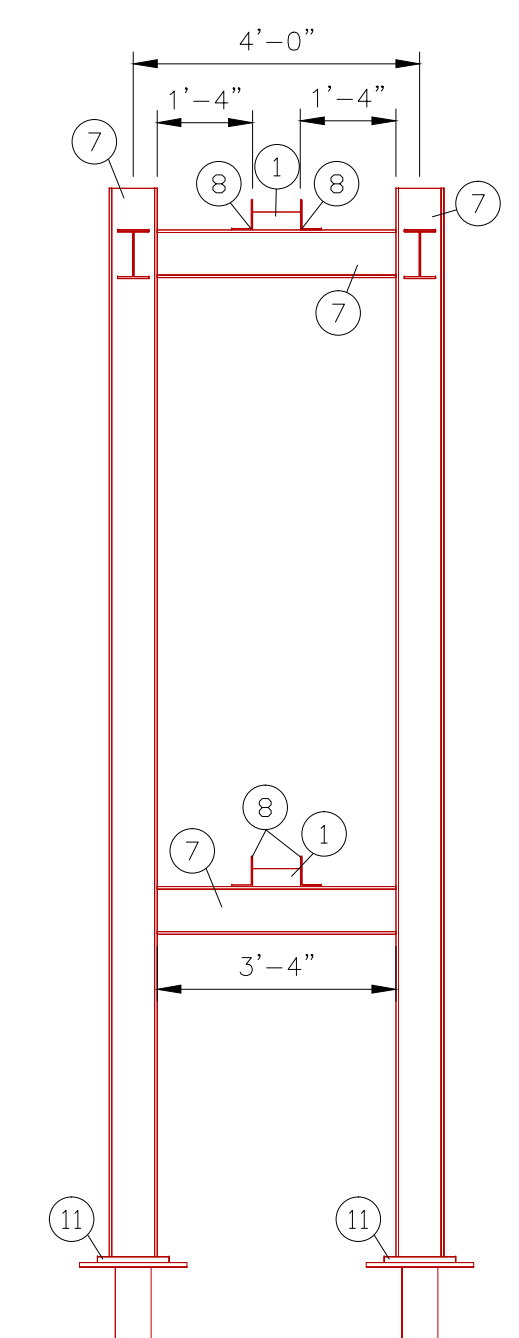
SCALE: 3/8"=1'-0"
 REFERENCE ANVIL DRAWING
 9323-510-1455
 FOR DETAILS

BILL OF MATERIAL			
MARK	QTY	LONG ANNOTATION	LENGTH
1	12	PL-3/8 X 8" X 3" (PIPE SHOES)	
2	1	L3X3X1/4	33'-9 5/16"
3	1	L4X4X1/4	35'-6 1/2"
4	1	L6X6X3/8	63'-1 1/4"
5	1	W6X15	5'-10"
6	1	W8X18	59'-10 3/4"
7	1	W8X31	143'-4 1/4"
8	1	L5X3 1/2X1/4 (PIPE SHOE, STD-MA-6124, S-3)	18'-0"
9	1	PL-1/2"X1'-0" (SIDES OF SUPPORTS)	4'-3"
10	6	2" NU-BOLTS W/ 1-RDD INSULATOR	
11	1	PL-1"X1'-0" (BOTTOM OF SUPPORTS)	10'-0"

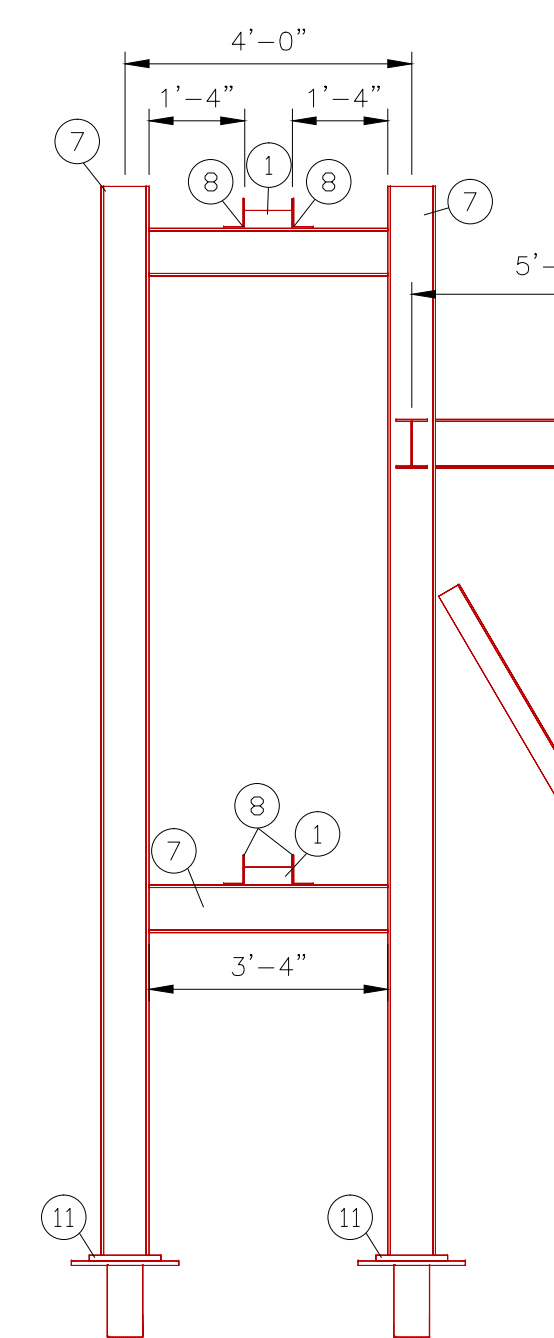
FOR ALL OTHER DETAILS SEE DRAWINGS
 GENERAL STEEL NOTES 9323-510-1452
 PIPE SUPPORT LOCATION PLAN 9323-510-1453
 PLAN AND SECTIONS 9323-510-1454
 ELEVATIONS AND DETAILS 9323-510-1455
 DETAILS 9323-510-1456
 ANVIL PIPE SHOE DETAIL MA-6124 (SHT. 3 OF 6)



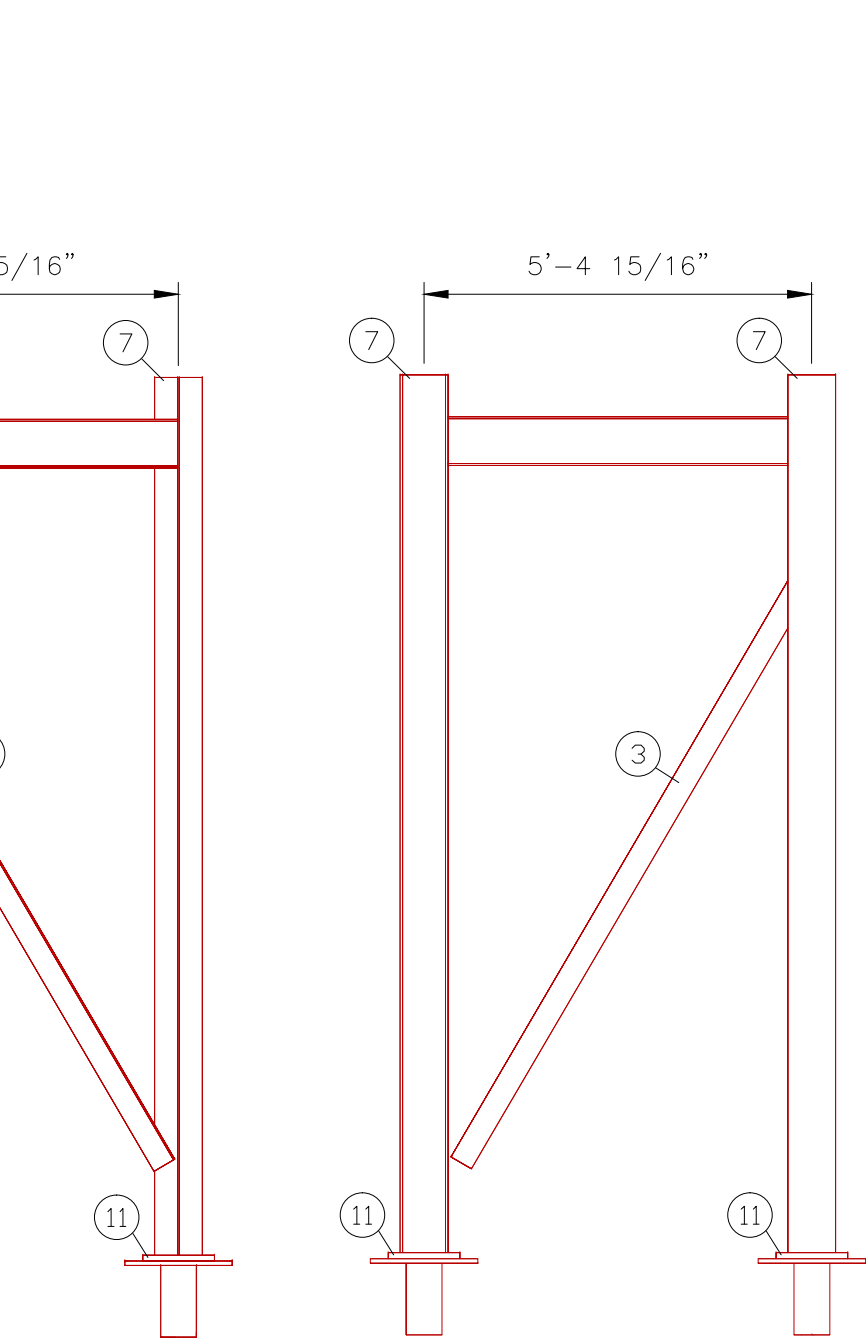
PLAN
 SCALE 3/8"=1'-0"



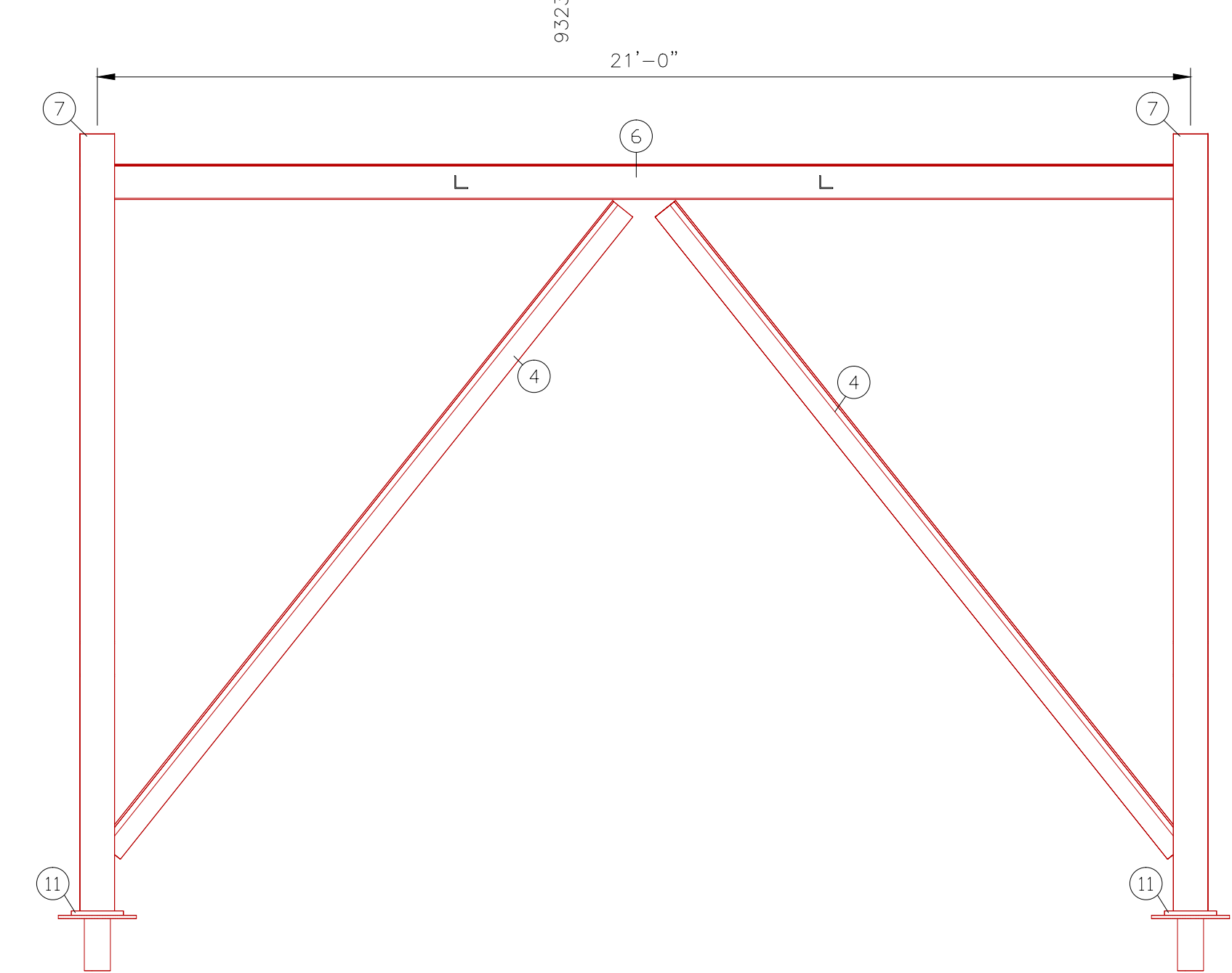
DETAIL A
 SCALE 3/8"=1'-0"
 REFERENCE ANVIL DRAWING
 9323-510-1454
 FOR DETAILS



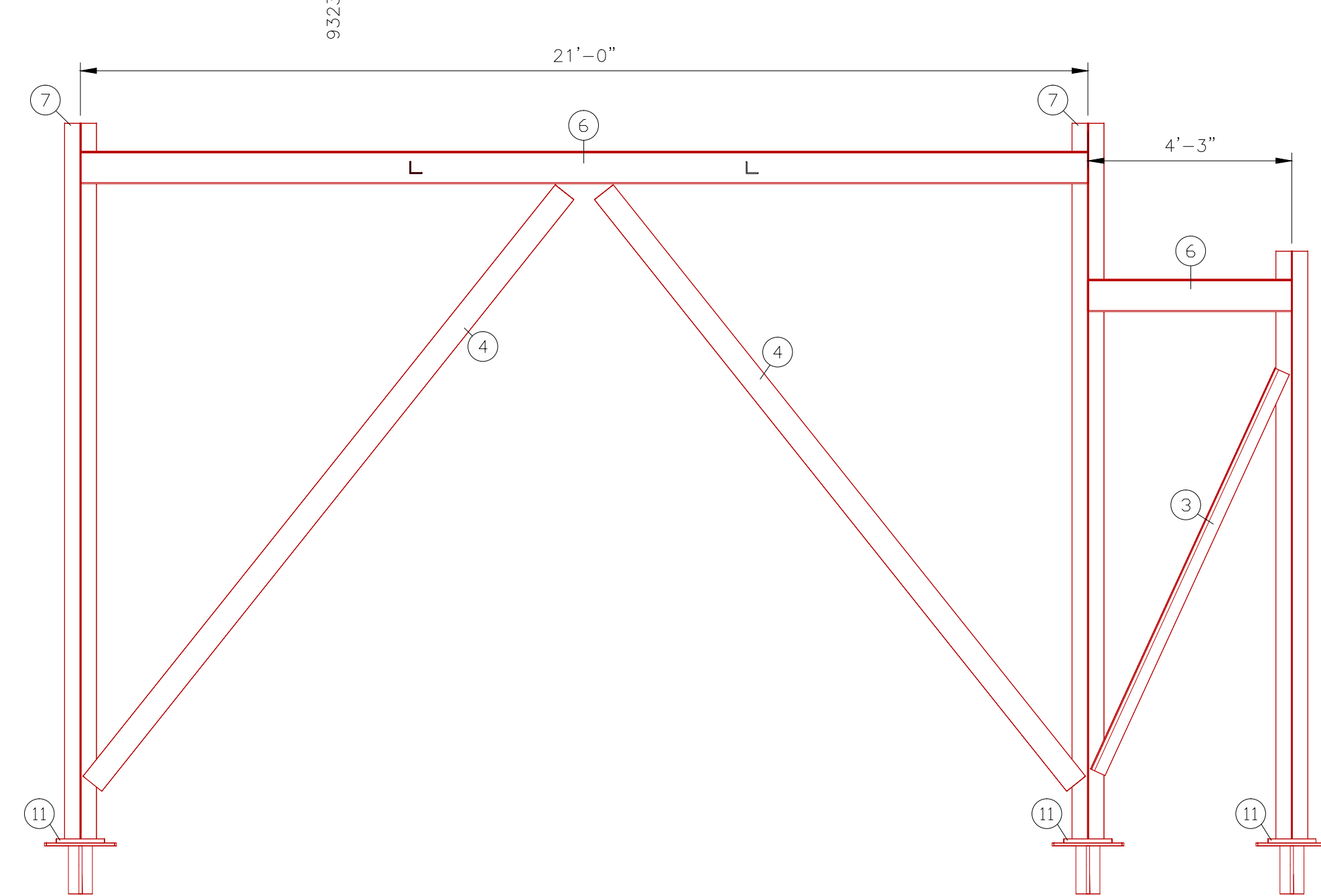
DETAIL B
 SCALE 3/8"=1'-0"
 REFERENCE ANVIL DRAWING
 9323-510-1454
 FOR DETAILS



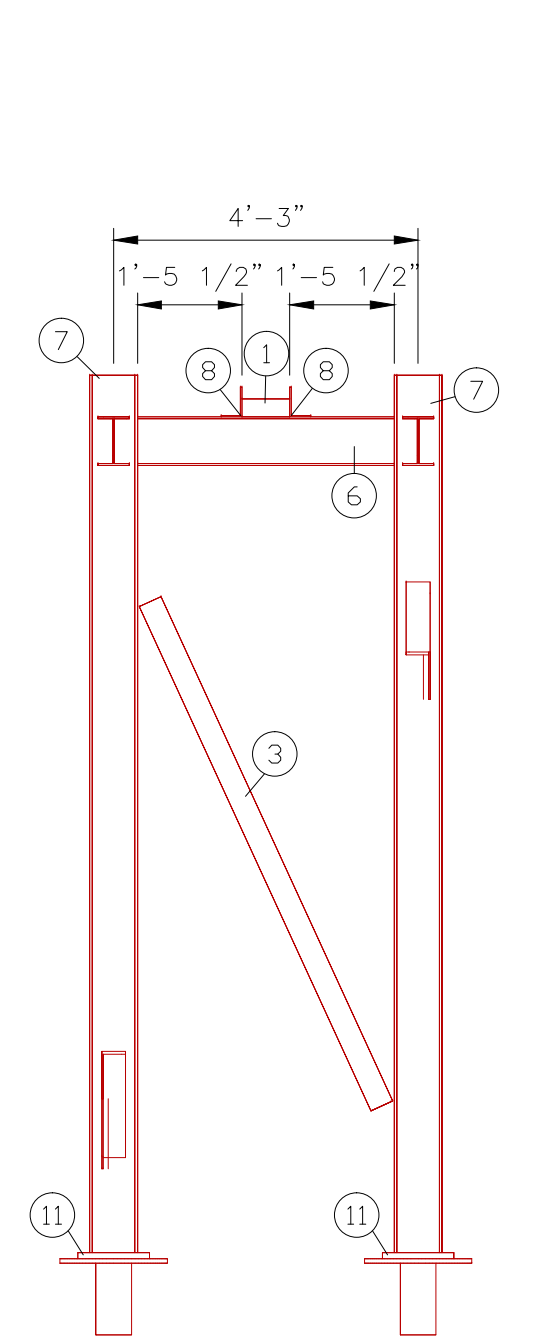
DETAIL C
 SCALE 3/8"=1'-0"
 REFERENCE ANVIL DRAWING
 9323-510-1454
 FOR DETAILS



DETAIL D
 SCALE 3/8"=1'-0"
 REFERENCE ANVIL DRAWING
 9323-510-1455
 FOR DETAILS



DETAIL E
 SCALE 3/8"=1'-0"
 REFERENCE ANVIL DRAWING
 9323-510-1455
 FOR DETAILS



DETAIL F
 SCALE 3/8"=1'-0"
 REFERENCE ANVIL DRAWING
 9323-510-1455
 FOR DETAILS

- NOTES:
- 1) CONTRACTOR TO FIELD VERIFY ALL DIMENSIONS, AND ELEVATIONS PRIOR TO FABRICATION
 - 2) FIELD TO DETERMINE SUPPORTS AND LOCATIONS AS NEEDED
 - 3) PROPOSED NEW MATERIAL IS SHOWN IN RED ON ALL DRAWINGS
 - 4) CONTRACTOR TO FACTOR IN WELD GAP ON DIMENSIONS

ISSUED FOR
 BID
 Mar 19, 2019

REVISIONS				DATE		BY		DESCRIPTION	
NO.	DATE	DESCRIPTION	BY	CHD	APRD				
A	3-19-19	ISSUED FOR APPROVAL	ES	SB					
B	3/14/19	ISSUED FOR APPROVAL - PIPING CHANGES (BETWEEN FILTERS)	ES	SB					
C	3/19/19	ISSUED FOR BID - STRUCTURAL STEEL/SUPPORTS	ES	SB					

**EXHIBIT A
6 OF 6**

ONEOK

NGGP

STEEL SUPPORT DETAILS
IF-800A INSTALLATION

LONESOME CREEK PLANT

MCKENZIE CO., ND