

Wade C. Mann  
100 West Broadway, Suite 250  
P.O. Box 2798  
Bismarck, ND 58502-2798  
701.223.6585  
wmann@crowleyfleck.com

September 13, 2019

*Via Hand Delivery and Electronic Mail*

Patrick Fahn  
Director, Public Utilities Division  
North Dakota Public Service Commission  
600 E. Boulevard, Dept. 408  
Bismarck, ND 58505-0480  
[ndpsc@nd.gov](mailto:ndpsc@nd.gov)

**In re: Hess North Dakota Pipelines, LLC  
North Hofflund Valve Site Tie-In  
Case No. PU-15-031  
Our File No. 011024-001427**

Dear Mr. Fahn:

Pursuant to our September 11, 2019, telephone conversation, enclosed for filing please find eleven copies of the valve set layout in the captioned matter.

Please feel free to contact me if you have any questions. Thank you.

Sincerely,



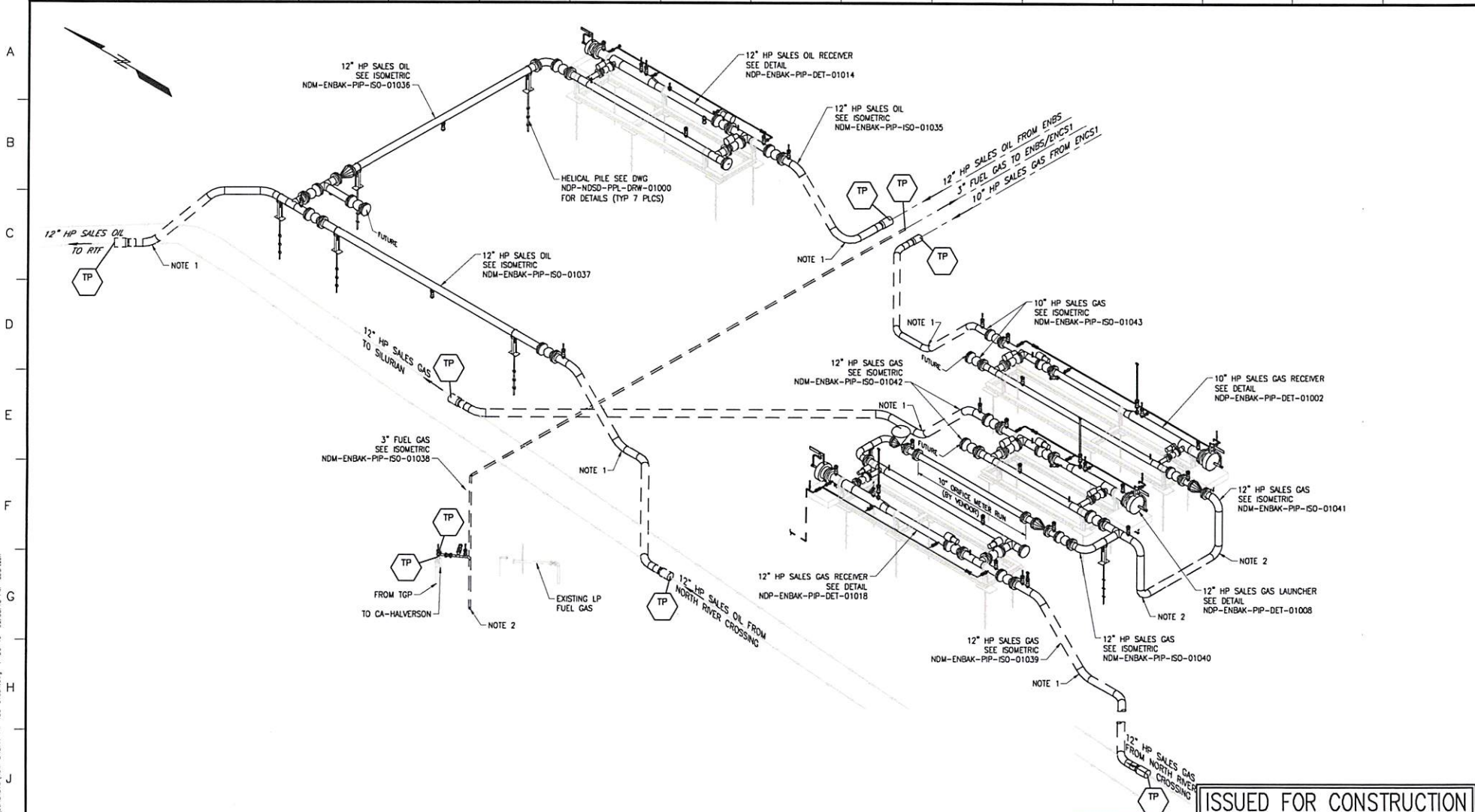
Wade C. Mann

WCM/lh  
Enc.

cc: Vicky Sund (via email)

2 **PU-19-320** Filed: 9/13/2019 Pages: 3  
**Valve Set Layout**

1 2 3 4 5 6 7 8 9 10 11 12 13 14 15 16



**ISSUED FOR CONSTRUCTION**

**NOTES:**  
 1. CONTRACTOR TO INSTALL STANDARD 45° THRUST BLOCK. SEE DWG NDP-NDSO-PPL-DET-01092.  
 2. CONTRACTOR TO INSTALL STANDARD 90° THRUST BLOCK. SEE DWG NDP-NDSO-PPL-DET-01106.

NO	DATE	DESCRIPTION	BY	CHKD	APP'D
0	7/28/14	ISSUED FOR CONSTRUCTION	SJM	LD	BWY
B	7/23/14	ISSUED FOR APPROVAL	SJM	LD	BWY
A	5/29/14	ISSUED FOR REVIEW	SJM	LD	BWY

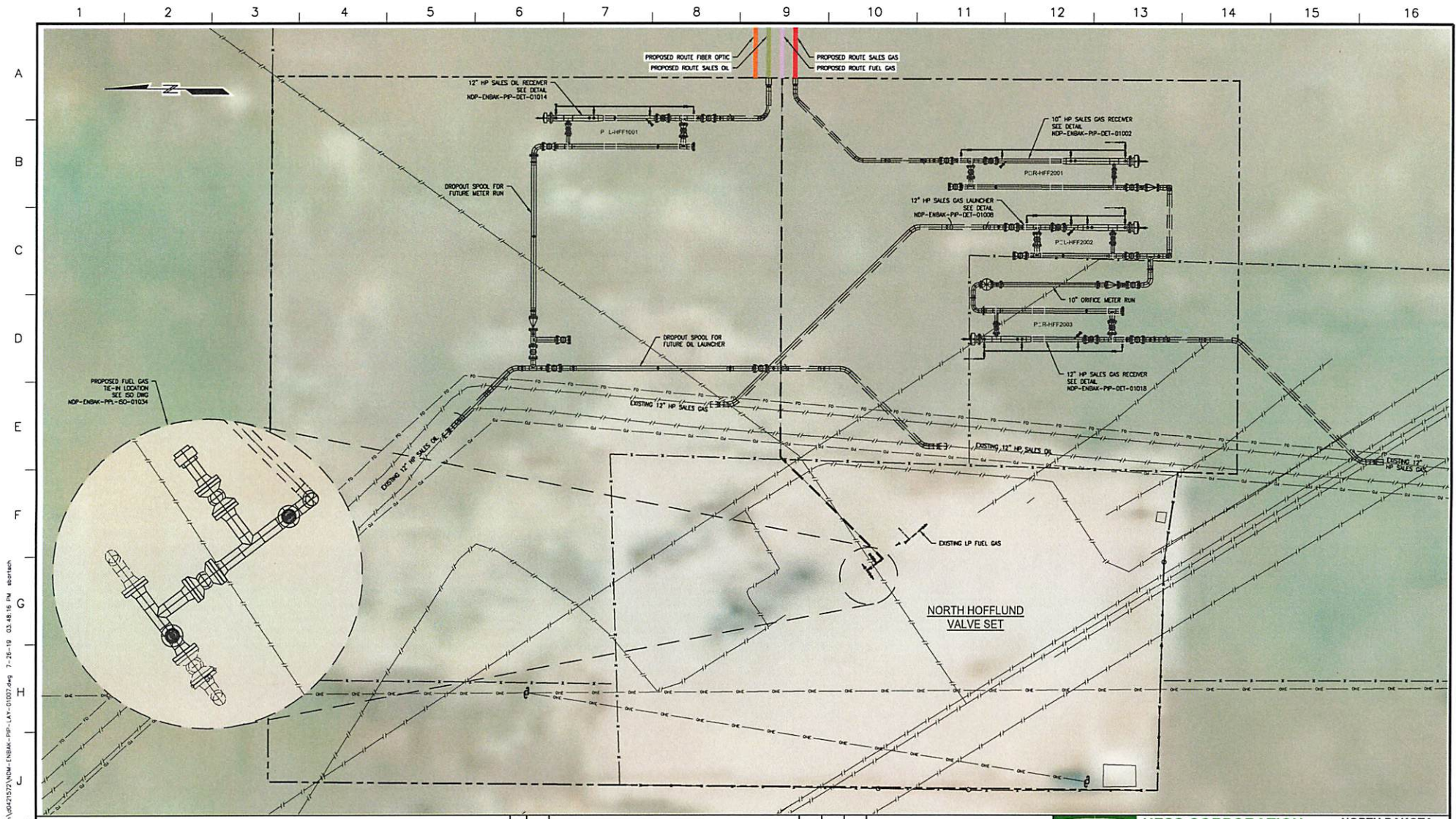


**HESS** HESS CORPORATION  
 EXPLORATION & PRODUCTION  
 NORTH DAKOTA MIDSTREAM  
 EAST NESSON BAKKEN  
 NDM-ENBAK-PPL-WOP-01007

**EAST NESSON HIGH PRESSURE PIPELINE PROJECT**  
 PIPING ISOMETRIC  
 NORTH HOFFLUND VALVE SET

DRAWN BY: SJM DESIGN BY: SJM CHECKED BY: LD APPROVED BY: BWY DATE: 04/15 SCALE: AS SHOWN  
 HESS DRAWING NO. NDM-ENBAK-PIP-ISO-01034 REV O

C:\pwworkspace\146023\146023.plt\146023.dwg 7/28/14 02:55:13 PM 146023.dwg



C:\pwworkspace\146003\146003.dwg 7-26-19 03:48:16 PM 8/2/2019

**NOTES:**  
 1. PIPELINE AND TE-IN LOCATIONS ARE APPROXIMATE AND SHOWN FOR GENERAL ORIENTATION ONLY.

NO.	DATE	DESCRIPTION	BY	CHK'D BY	APP'D BY
0	7/29/19	ISSUED FOR CONSTRUCTION	SJM	LD	BWY
C	7/20/19	ISSUED FOR APPROVAL	SJM	LD	BWY
B	6/17/19	ISSUED FOR PERMIT	SJM	JWD	BWY
A	5/15/19	ISSUED FOR REVIEW	SJM	LD	BWY



**HESS** HESS CORPORATION  
 EXPLORATION & PRODUCTION  
 NORTH DAKOTA MIDSTREAM  
 EAST NESSON BAKKEN  
 NDM-ENBAK-PPL-WOP-01007

**EAST NESSON HIGH PRESSURE PIPELINE PROJECT**  
**PIPING LAYOUT**  
**NORTH HOFFLUND VALVE SET**

DRAWN BY: SJM DESIGN BY: SJM CHECKED BY: LD APPROVED BY: BWY DATE: 04/19/19 SCALE: 1" = 10'-0"  
 SIZE: DRAWING NO.: HESS DRAWING NO.: NDM-ENBAK-PIP-LAY-01007 REV: 0