

Table 1. Northern Divide Wind Energy Center - Shadow Flicker and Acoustic Assessment Results - Participating Landowners

Receptor ID	County	Predicted Shadow Flicker Hours per Year ¹	Predicted Sound Level (dBA) ^{2,3}	Nearest WTG	
				ID	Distance (ft) ⁴
R2	Burke	0	47	8	2,365
R16	Burke	22	48	17	2,040
R21	Burke	3	41	3	3,783
R23	Burke	1	46	30	2,812
R30	Burke	7	47	43	2,736
R34	Burke	12	48	50	2,677
R39	Burke	10	47	Alt3	2,732
R42	Burke	5	41	74	2,757
R51	Burke	0	40	1	2,713
R58	Burke	7	41	68	3,712
R627	Burke	0	26	73	14,465
R641	Burke	0	18	70	16,872
R645	Burke	0	32	51	9,207
R646	Burke	0	36	58	6,660
R655	Burke	0	42	3	4,062
R657	Burke	0	43	35	2,853
R659	Burke	0	24	74	13,877
R696	Burke	0	26	1	10,245
R722	Burke	0	25	70	10,539
R724	Burke	0	21	70	14,701
R1029	Burke	0	32	70	6,358
R1033	Burke	0	27	51	14,384
R1034	Burke	0	27	58	14,866
R1068	Burke	0	22	70	13,268
R1069	Burke	0	27	74	11,095

1. Values presented herein reflect the "With Alternates" data contained within Application Appendix B4
2. Values presented herein reflect the "With Alternates" data contained within Application Appendix B3
3. To consider sound level compliance with both Burke County Zoning Regulations (measured at a 50-foot distance from the receptor) and N.D.Admin Code 69-06-08-01 (measured at a 100-foot distance from the receptor), the presented sound level is the highest predicted noise level at a minimum distance of 100 feet from the receptor in virtually any direction.
4. Distances measured from the receptor center point to the nearest wind turbine, values not intended for setback evaluation.

Table 2. Northern Divide Wind Energy Center - Shadow Flicker and Acoustic Assessment Results - Non-Participating Parcels, Participating Landowner

Receptor ID	County	Predicted Shadow Flicker Hours per Year ¹	Predicted Sound Level (dBA) ^{2,3}	Nearest WTG	
				ID	Distance (ft) ²
R17	Burke	2	46	17	2,389
R31	Divide	0	31	4	9,825
R100	Burke	0	41	72	3,537
R105	Divide	0	33	5	9,590

1. Values presented herein reflect the "With Alternates" data contained within Application Appendix B4

2. Values presented herein reflect the "With Alternates" data contained within Application Appendix B3

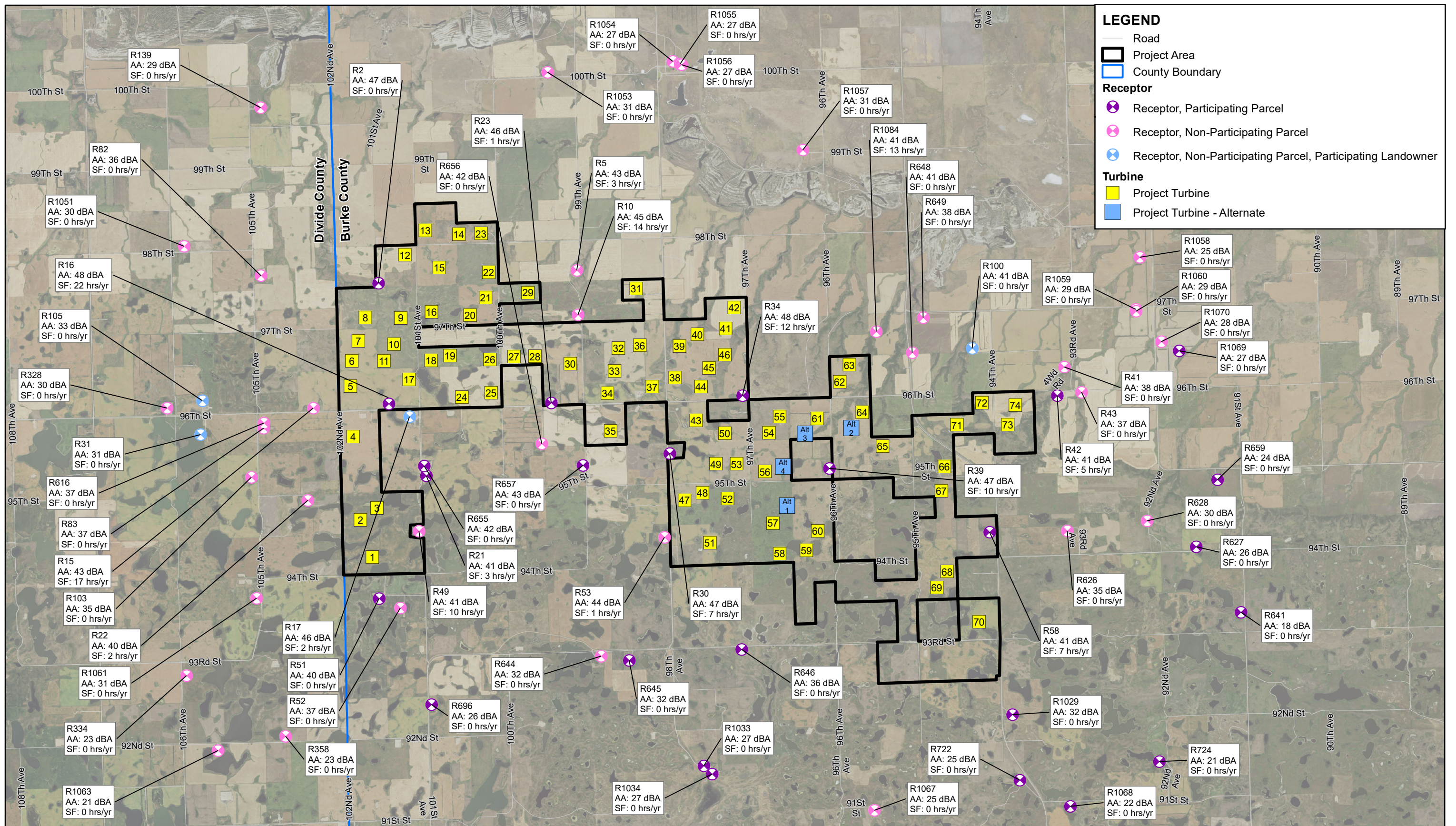
3. To consider sound level compliance with both Burke County Zoning Regulations (measured at a 50-foot distance from the receptor) and N.D.Admin Code 69-06-08-01 (measured at a 100-foot distance from the receptor), the presented sound level is the highest predicted noise level at a minimum distance of 100 feet from the receptor in virtually any direction.

4. Distances measured from the receptor center point to the nearest wind turbine, values not intended for setback evaluation.

Table 3. Northern Divide Wind Energy Center - Shadow Flicker and Acoustic Assessment Results - Non-Participating Landowners

Receptor ID	County	Predicted Shadow Flicker Hours per Year ¹	Predicted Sound Level (dBA) ^{2,3}	Nearest WTG	
				ID	Distance (ft) ²
R5	Burke	3	43	29	3,453
R10	Burke	14	45	30	3,191
R15	Divide	17	43	5	2,806
R22	Divide	2	40	2	3,625
R41	Burke	0	38	74	3,983
R43	Burke	0	37	74	4,347
R49	Burke	10	41	3	3,101
R52	Burke	0	37	1	3,754
R53	Burke	1	44	47	2,725
R82	Divide	0	36	8	7,254
R83	Divide	0	37	4	5,801
R103	Divide	0	35	4	7,053
R139	Divide	0	29	13	13,249
R328	Divide	0	30	5	11,913
R334	Divide	0	23	1	14,198
R358	Divide	0	23	1	12,826
R616	Divide	0	37	4	5,812
R626	Burke	0	35	73	7,846
R628	Burke	0	30	73	10,902
R644	Burke	0	32	51	10,137
R648	Burke	0	41	63	4,120
R649	Burke	0	38	63	5,630
R656	Burke	0	42	35	4,523
R1051	Divide	0	30	8	12,548
R1053	Burke	0	31	23	11,239
R1054	Burke	0	27	31	14,810
R1055	Burke	0	27	31	14,726
R1056	Burke	0	27	31	14,693
R1057	Burke	0	31	42	11,059
R1058	Burke	0	25	74	12,444
R1059	Burke	0	29	74	9,911
R1060	Burke	0	29	74	9,851
R1061	Divide	0	31	1	7,913
R1063	Divide	0	21	1	15,948
R1067	Burke	0	25	70	13,903
R1070	Burke	0	28	74	10,250
R1084	Burke	13	41	63	2,743

1. Values presented herein reflect the "With Alternates" data contained within Application Appendix B4
2. Values presented herein reflect the "With Alternates" data contained within Application Appendix B3
3. To consider sound level compliance with both Burke County Zoning Regulations (measured at a 50-foot distance from the receptor) and N.D.Admin Code 69-06-08-01 (measured at a 100-foot distance from the receptor), the presented sound level is the highest predicted noise level at a minimum distance of 100 feet from the receptor in virtually any direction.
4. Distances measured from the receptor center point to the nearest wind turbine, values not intended for setback evaluation.



Source: AECOM, 2019. 2018 Aerial Imagery from North Dakota state agencies & ND GIS Hub.

Definitions: AA = Acoustic Assessment Result; SF = Shadow Flicker Assessment Result
 Values presented herein reflect the "With Alternates" data contained within Application Appendix B3 & B4

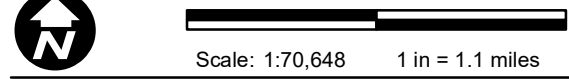


FIGURE 1
PROJECT OVERVIEW - RECEPTOR DETAIL

