

Ms. Julie Fedorchak
Public Service Commissioner

Mr. Brian Kroshus
Public Service Commissioner

Mr. Randy Christmann
Public Service Commissioner

Re: PROPOSED NORTHERN DIVIDE WIND, LLC

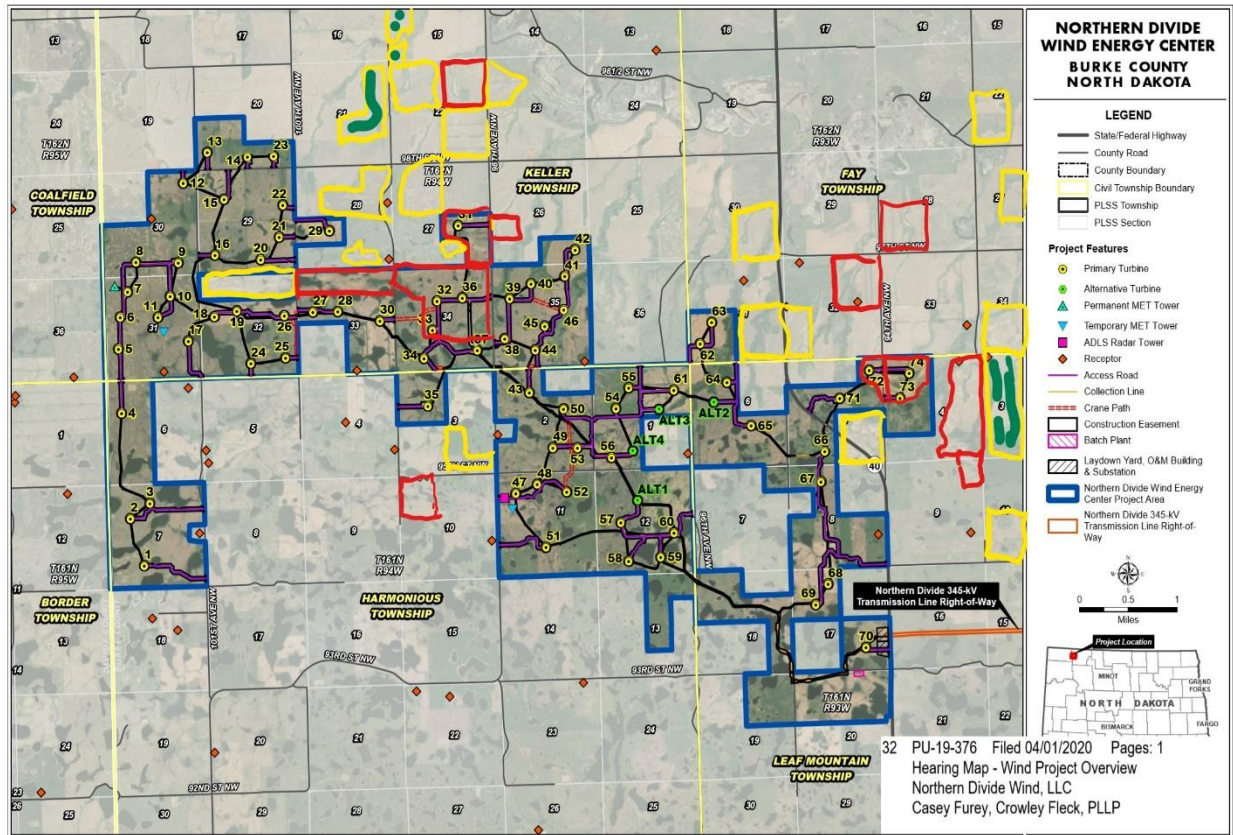
Dear Commissioners,

Thank you in advance for reading this testimony and for allowing me to call in on April 17th, 2020 regarding the Northern Divide Wind hearing. I would like to introduce myself. I am a 37-year-old 4th generation farmer in Burke County. I am married to my wife Kari who is a Registered Nurse at St. Luke's Medical Center in Crosby, ND. We have three kids – 2 boys ages 6 and 3, and a one-year old girl. I have been farming with my parents for 20 years. My parents Mike and Wanda Ely were both born and raised in Burke County. My father is putting in his 50th crop this year. We both live on the same farm just north of the proposed wind farm.

We farm land in Forthun, Shortcreek, Portal, Soo, Keller, Fay, Vale, Harmonious, and Leaf Mountain Townships in Burke County. We own land in many townships in Burke and in Sections 3,10,15,21 of Keller Township, 1,5,6,23 of Fay Township, and in Sections 2,3 of Leaf Mountain township around the Northern Divide Wind Energy Map. I have added our fields on the map to have a better visual.

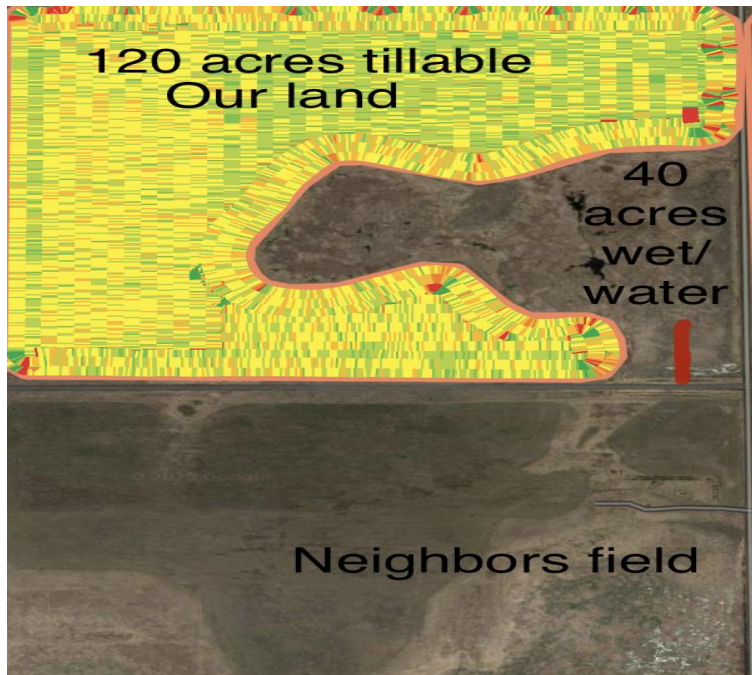
Yellow fields are rented land. Yellow fields with Green inside them are land we own.

Red fields are rented land from landlords who are getting 1 or more towers on the map.



With the Northern Divide Wind Energy project, we have been hearing a lot of “it’s my land I should be able to make money off it anyway way I can”. Just because you own land doesn’t mean you have every right to do what you want for a financial gain while making the land right beside your land worth less. Our family owns many acres of land in Burke County and of those acres, around 650 acres of it is untillable because it has sloughs with water (wet land). Those untillable 650 acres x 2500 lbs. of canola per acre = \$243,750 more dollars of canola sales for us each year. It would also make 650 more tillable acres of land, which means that would make the land worth more, since the more tillable acres the higher the land value with farmland. Another 650 acres x \$1200 per acre of tillable land would make our land worth \$780,000 more than it is right now. Right there we are losing over a million dollars because of water on the land we own. Why can’t we drain our water so that it goes on to our neighbor’s land? Our land would be worth more and the land around us would be worth less because they would have less tillable acres due to the water off our land. It is our land; we can do what we want, right? No, they do not let us do this!

If the wind towers are going to be approved, why can't we drain our water onto other land? We could have over 12 million dollars of grain sales next 50 years. That's not even counting how much more the land would be worth next 50 years with that many more tillable acres. It's our land can't we make money off of it?



(Red line is proposed drainage ditch to drain to neighbors' field.)

My whole point is why do some landowners get to put wind towers on their land for financial gain? There are farmyards that are ½ mile away that only own the farmyard, not the land around it, making the landowners farm land devalued in price.



I took this picture on November 14th, 2019 while we were hunting along County Road 1. This farm is south of Larson on Section 2 in Harmonious Township. Basin Brokers has their for-sale sign in the driveway. This farmyard, located in the open prairie, is something homeowners dream of having. Imagine buying this yard and one day the picture changes. The wind tower project proposes on building towers 35,34,33,37,38,43,50,49,48,47 (page 2 map) within a mile and you don't own the land around you, only your farmstead. Would anyone want to buy a farmyard with wind towers all around it? That farm was purchased before the wind company started this process and now the owner of this farm must be penalized because of other people who want to make money off their land with wind towers. I can't think of one thing that could be put on the land around this farm or anyone else's farm that would make this place less desirable. There are other farm homes that are all within a ½ mile of wind towers that do not own the land outside their farmyard. Are they going to penalize them also? They have lived there forever or have purchased these farm homes for a lot of money before the wind company started. Why should they have to decrease the value of their farm home because other landowners (who do not live on the land located by the towers) are going to take a financial gain? If you wanted to purchase a farm yard with 20 acres along a nice county road in Burke County, would you buy it with wind towers ½ mile all around it or would you buy it somewhere else in Burke County where there isn't a wind farm ? Sit and think about that for a second...

What would happen if this is how a city operated? Imagine a new neighbor wanting to build something on his lot that would make your house value, and others around it go down, and the same neighbor would profit from his while yours was devalued? Is this right? Would the city council approve this? Is that neighbor going to tell the city council “well it’s my lot I can do what I want because I own the lot.” Are we going to treat someone’s home on a lot in town different than another person’s home in town on a lot? We own land on two sides of Columbus, North Dakota. Can we put something on our land that the town would not approve of just because we own the land? Can someone build a bar next to a high school just because they own the land around it and want to make money off their land? What about if someone owns land around an airport? “It’s my land, I’m putting wind towers up.” No one would let you put wind towers around an airport that has been there forever. Why is farming any different? Our land has also been here forever. We hire planes in our farming operation, but they will not spray close to the proposed towers. Just because we live in the country does not mean we need to be treated differently.

If you want to sell the water on your land in Burke County, you must send in an application to even try to sell it. Owning the land does not mean you can do what you want!

If you want to transfer water from one quarter, that you own, to another quarter, that you own, you cannot do that. Just because you own the land does not mean you can do what you want!

Has anyone read the information about what percentage of people are going to receive checks for these towers and that actually live in our county or in our state? The landowners that we rent land from, and are getting towers, do not live in the county full time. Only 2 of them live part time in Burke County and signed up for the wind towers on their land. I received the list of names which go with the tower locations from Marla MacBeth of the Burke County Planning and Zoning Commission. To our knowledge, there is only 3 families out of the 23 families receiving towers that live here full time, 16 of the 23 live out of the area, and 4 of the 23 live part-time in tower area within 6 miles or less.

Has anyone thought of the long-term effects of this? Will anyone want to move to this part of Burke County if this would happen? Is it fair that some people would rather build a house or buy land in other parts of Burke County and not where the wind towers are? Is it fair to everyone who owns land in Burke County around the towers who didn’t sign up for them? We drove through McGregor, North Dakota not too long ago. Has anyone asked how that town has really boomed after wind towers are just 2 miles away? Didn’t Northern Divide Wind Energy say how this is really going to help our small towns? Has it helped McGregor? Nothing has changed in McGregor!!!!!! The dollar on the street is the same as it was before wind towers.

What happens if someone who didn't sign up for the wind towers wants to sell his/her quarter of land and other farmers don't want to buy it because it's worth less than land that doesn't have a wind tower on it? What happens if he loses \$50,000 or \$100,000 on it? They pay county taxes just like the rest of us do on the land but will get penalized financially because it has a wind tower 600 feet from land he doesn't own. What happens if it devalues most of the land by the wind towers and they did not sign up for it? Roughly, there is 36 sections inside and around the Northern Divide Wind Energy Map; 36 sections which is 144 quarters of land and are worth \$25,000 less than they would be if that \$3.6 million of lost income for the landowners didn't have towers. Is that fair to those landowners in Burke County?

Has anyone asked the FSA Conservation Service what happens when they put all these wind towers on side hills that are only 600 feet away from someone else's land? All the water washes down the steep grades and washes the neighbors land, resulting in losing his CSP payments or their FSA payments, and they had not even signed up for the wind towers. They could potentially lose tillable land because of the tower water erosion. The tower will be out of the farm program but all the tillable land around the towers are enrolled in the farm program. Who is going to pay the government back the payment? What happens if you lose all your payments on all your land just because of this one quarter by the tower? These are all farm programs that were signed up for the farm program long before the wind company was here.

When I called into the hearing on April 17th, 2020 I asked about crop spraying. Does the person who does not want a wind tower on their land have to get penalized and change the way he farms because a man-made wind tower? This is going to change the way the natural air flows around his land. During the hearing call-in, Northern Divide's representative asked if I had contacted the wind tower people about policy. I had no need to contact them because my spray pilot from Kenmare, ND, Julius Brekhus of Great Plains Aero Inc., told me he would not aerielly spray fungicide or herbicide on any of the land we farm located by a wind tower in the proposed map area.

The towers on the picture below were just bored on November 11th, 2019 on the land we rent. The picture of the track machine below is on tower number 72, which is roughly 600 ft away from land that does not have towers on it. Our sprayer has 132 ft wide booms. That puts us only 468 ft from land that does not have wind towers. Has anyone thought about how the wind tower's airflow will affect drifting on to the land that does not have a wind tower? Spraying is one of the most challenging and most important things on a farm today. Farmers do not know what the wind current will be until they are in the field within minutes of spraying. We have a weather station on our sprayer and our own weather station on our farm just to monitor wind speeds every minute of the day. Are we supposed to call the wind tower company and have them shut the towers off 5 minutes before we spray? What happens if we wanted them off and

they did not go off until the next day? What if they came on a day too soon, or while we are spraying when the wind is wrong, and we do not get our land sprayed. What happens if the canola is ready to flower and we miss our opportunity to spray it and it is too late? What happens if the farmer gives the maps to the local elevator co-op to get their crop sprayed that is near towers, or on land that doesn't have a tower but is by towers? Whose responsibility is it to notify the wind tower company to shut down towers for spraying; the co-op, the renter, or the landowner? With all these towers moved now to tillable acres, how is this going to work for people who rent the land that the towers are on, or rent and spray land without towers that are by the proposed towers? Timing is everything in spraying! We would lose major amounts of income because of it! Is the wind company going to cut us a check for our lost income from the inability to spray? The wind tower company did not even contact us before they drove in our unharvested crop in the summer of 2018 and again last fall (second picture is from November 11th 2019). Does anyone know about the elevations of the new towers that were bored in November 2019 on this land we rent?



Bore location on tower 72 is pictured above.

The Picture below:

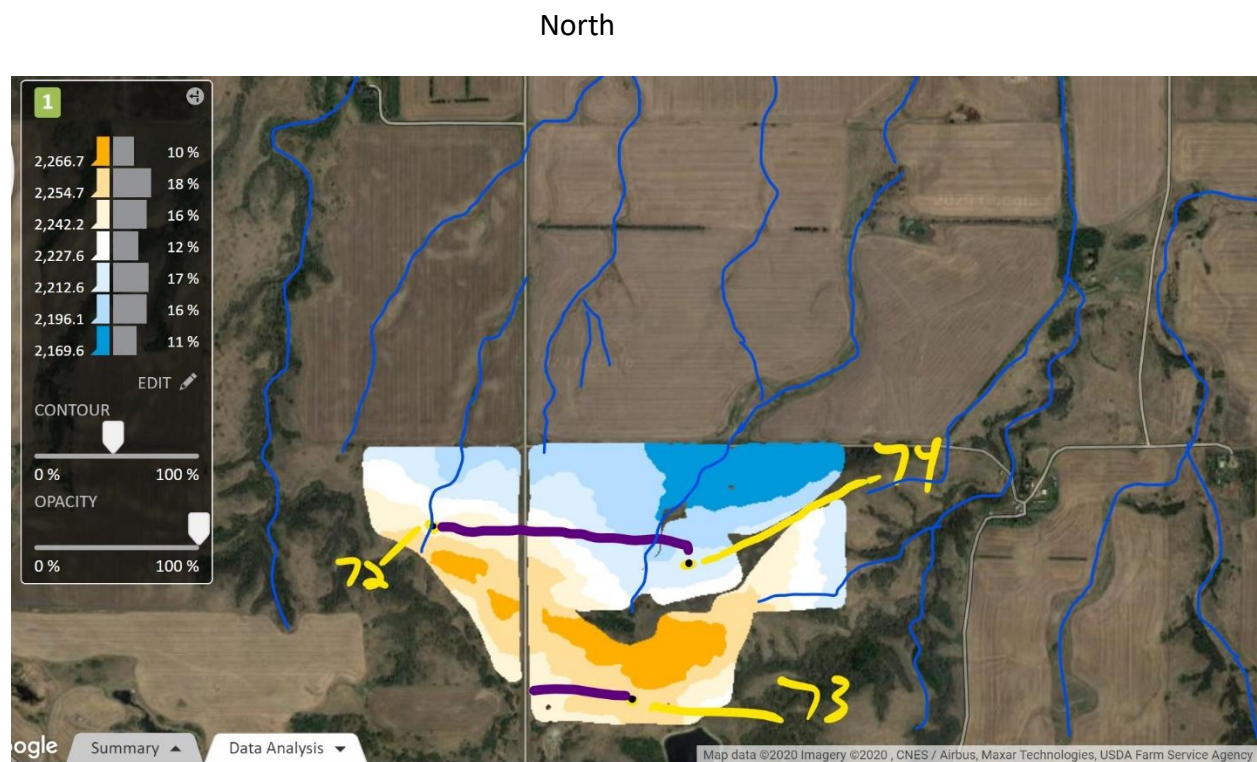
Yellow numbers are tower number locations

Blue lines are water which runs south to north

Purple is tower roads that run east and west

Towers 72, 74, And 73 from the Northern Divide Tower Map. Elevations layer map on land we rent in Section 4 of Leaf Mountain.

Numbers on the left side of the picture below are elevation in feet.



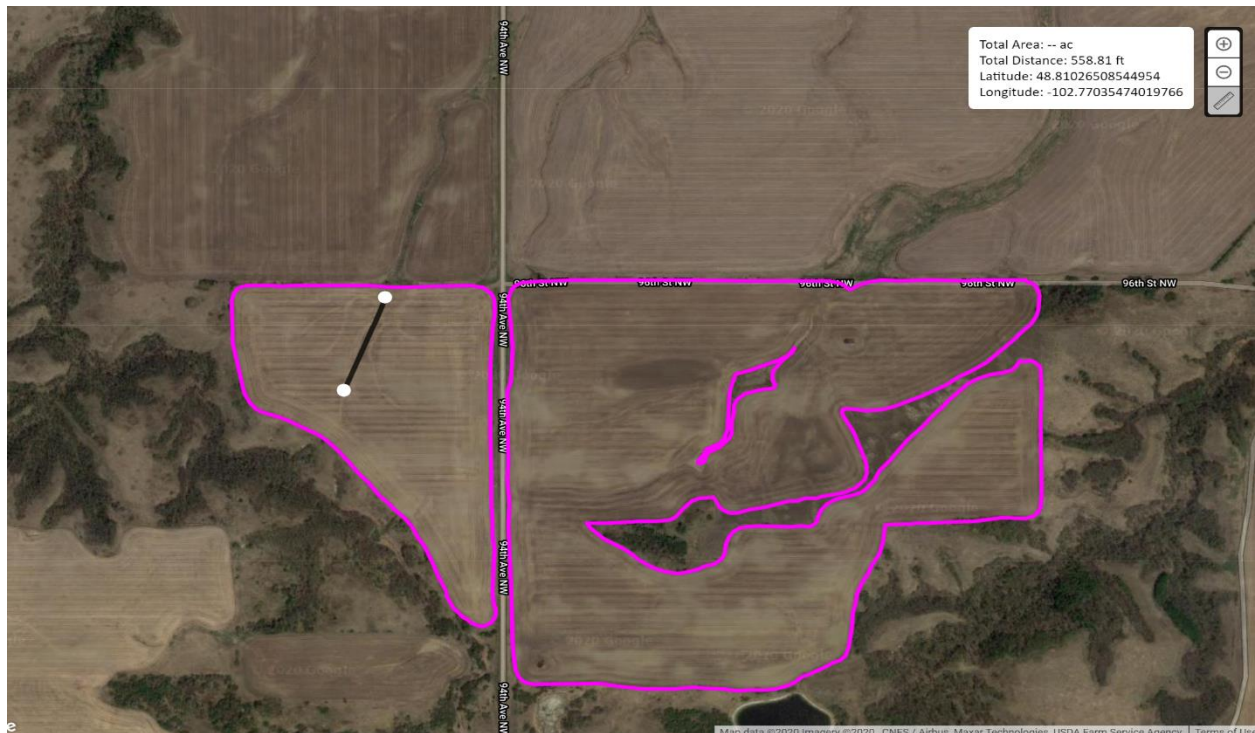
We have mapped elevations since 2008 on every acre of land we farm with RTK GPS Signal (sub inch accuracy). This helps us learn where the water runs and how to manage erosion since all our land is in the farm program that we rent and own. On these two fields towers 72,73,74 are going in on land we rent. Since they moved all these towers on to tillable land, it is a major concern for erosion. This land might appear flat on paper, but it is far from that. Water on this map runs south to the north and the wind tower company will be putting roads in east and west. On tower 72 location it has an elevation of 2242 feet. From tower 72 location to the far north of the field it drops to 2169 ft elevation in just 558 feet. That's a 73 foot drop in this field,

basically just under the length of two football fields. On one smaller field where tower 72 is located there is a 97-foot difference in south to north elevations!!!! We have implemented extreme measures to preserve agricultural land from water erosion for all the land we own and rent and have very little erosion problems because of this. Once water starts, it can destroy everything it goes on, especially when dirt is moved. Northern Divide wants to build these roads east and west in these locations all over the wind tower map. Once you divert the water from its natural path it is going to wreck everything! What happens if it holds water on the south part of the field and then on the north side it starts going into the landowners' field in a different direction? What happens if it washes out their road and it is in our field or the field to the north, who isn't in the wind program? What happens if we can't stop it and it keeps washing out the field to the north that is our neighbors? We all know, once we move dirt on the hills, they will never be the same again. We still have contracts for this rented land and all of it is in the farm program. We must preserve agricultural land in Burke County!!!!!!!

The farther you go north the more the elevation continues to drop.

Black line with white dots is total distance from tower location to the lowest point of where water drains. Only roughly 558 feet (notice feet in white box in right side of picture below).

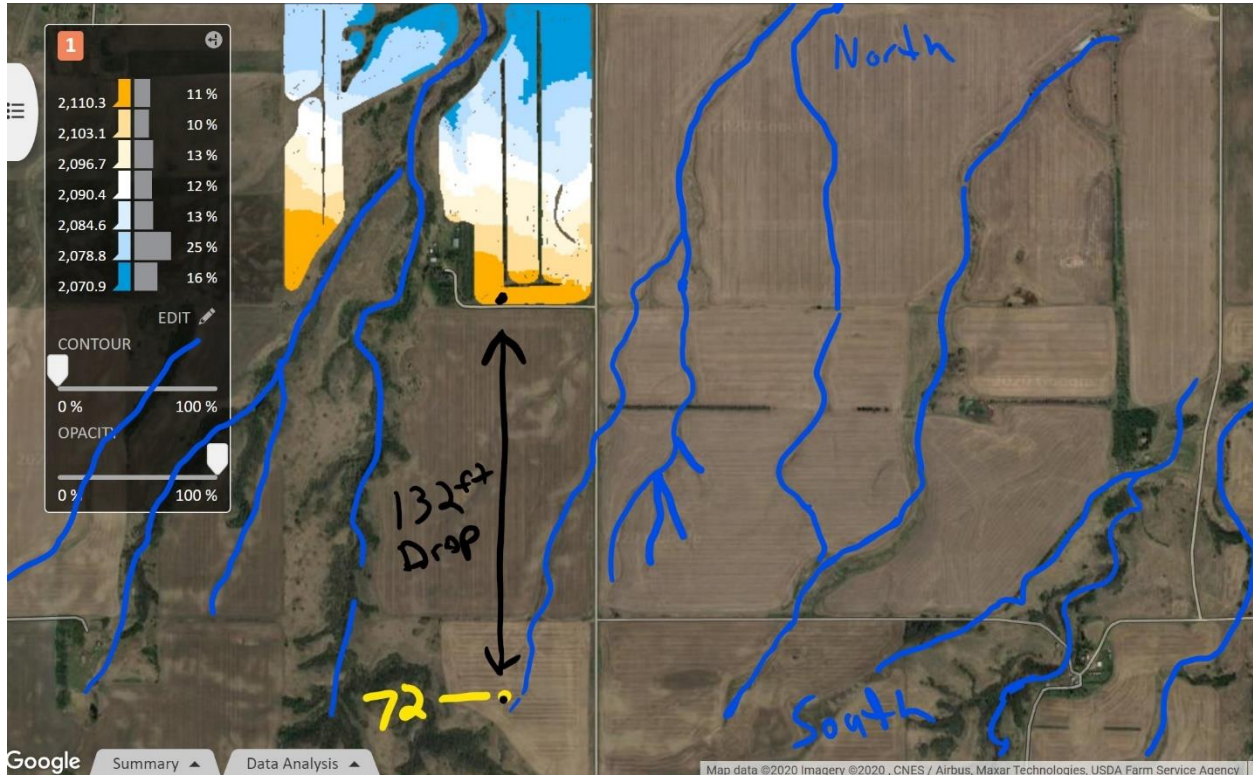
North



South

This picture below shows the distance from tower 72 to just a little over half mile to our field we rent to the north.

North



South

In just over a half mile the drop is 132 feet!!!! When I was listening to the hearing on April 17th, 2020, Northern Divide Wind Energy said the towers are roughly 480 feet to the top of the blade straight up. If you are a ½ mile away they are actually 612 feet high. This is another reason why our spray plane pilot, Julius Brekhus of Great Plains Aero, Inc. from Kenmare, will not spray our fields by wind towers. The google picture, I highlighted in blue, shows all the water that drains out from south to north and that's why roads will never work east and west.

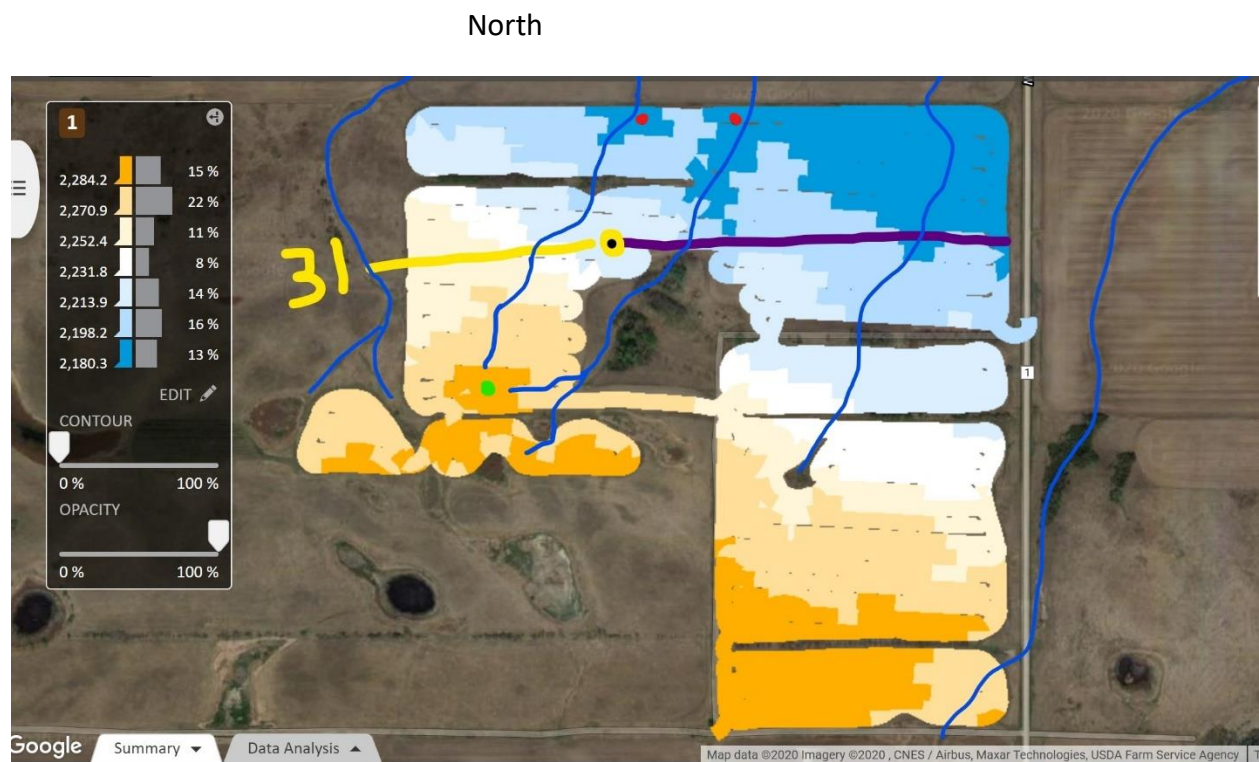
Picture below is tower 31 from the Northern Divide Tower map on land we rent in Section 27 in Keller Township.

Purple line is tower roads that go east and west

Blue lines is water that flows south to north

Green Dot highest point

Red Dots lowest point



South

At tower 31 location elevation is at 2213 ft. The highest point south of tower location (green dot) is at 2270 feet and bottom of water flow at the northern end of field (red dots) is at 2180ft. That's a 90 foot drop in just 1427 feet (Picture to show that below) Roads put in east and west will divert water and cause major erosion to this land. Diverting water like this that flows south to north is a major issue and once it starts it will not be stopped and also will cause damage into the neighbor's field to the north. We have worked awfully hard through many years to keep the land from eroding away!!!!

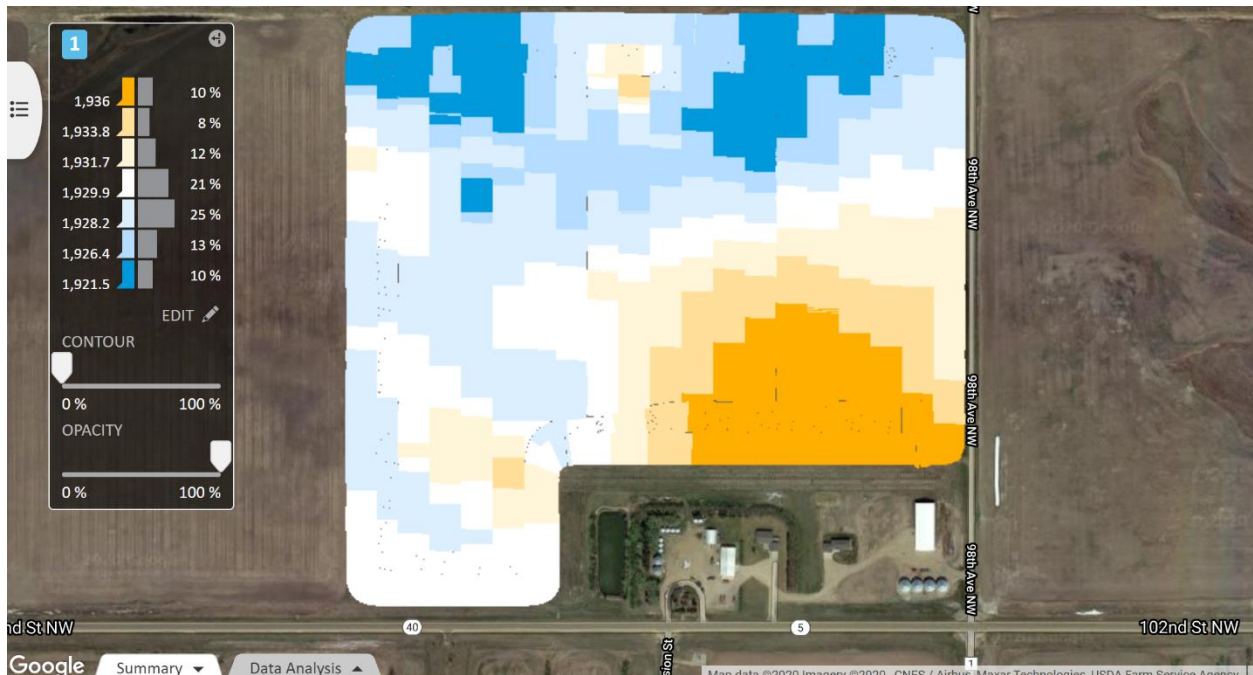
As I said in the hearing call on April 17th, 2020 the percent grades are very steep where the towers are projected to go in. (-9.5 roll angle and -5.9 pitch angle in degrees) Picture is taken around where tower 31 is to go in.



This is the elevation map of our farm where we live. In just 4 miles to the south is the Northern Divide Wind Tower 31 which is at 2213 feet. Our house elevation is 1936 feet. That is a 277 foot drop. The wind tower will look to us at 757 ft high!!!!!! How high is 757 ft?

Fargo Dome 125 Ft – Statue of Liberty 305 Ft – High Roller Las Vegas 550 Ft – Washington Monument – 555 Ft – Space Needle 605 Ft

Looking out our front living room window these towers will look 152 Ft higher than the Space Needle.



Why was Northern Divide Wind already boring holes and driving through unharvested fields before this project was even approved? Do they have any respect for the people who own and rent farmland in Burke County? Do they respect how things are approved in our state? What other company can do what they want before something gets approved? That's like saying -I have an overload permit for next week to transfer something very heavy through Burke County but I know it will be approved "I think anyway" so I'm going to do it now. What happens if a company starts working on a \$300 million project on Broadway in Minot before getting it approved by the city? They get turned down but start working again on their project before the city has approved once again? Northern Divide Wind has NO respect for the landowners or the renters of the land where the towers will possibly be placed. They never contacted us about driving in our field or what we need to get paid for damages before they proceeded to go on this land where towers 72,73 and 74 will go. They were contacted and I currently have not been paid for damages. They have all the GPS locations where they drive and how many feet they drive in the fields. Pictures below are from November 11th, 2019 on the land we rent. The land

was just signed up for wind towers last fall 2019. The tracks are from where they drove to mark the spot prior to November 11th, 2019 and the track boring machine was from November 11th 2019.

Tower location 72 with track machine and pickup driving through unharvested wheat field



Tower 73 location - drove through our unharvested wheat field





What about the county roads, along with the township roads and prairie trails in the townships? What happens when the wind company wrecks the access of the county roads leading to the towers? I went out a few weeks ago and attached a 4K GoPro to my pickup and one to our side-by-side and drove every county road, township road, and prairie trail in the townships where Northern Divide Tower Map is located. I filmed over 65 miles of video of every inch of every gravel road and prairie trail. I have proof of every inch of road and how well they have been maintained. All of our roads are currently in excellent shape. What about these large trailers that will be hauling the towers? We have a hard time getting around with 48-foot grain trailers. Our roads will be destroyed by the weight of all of their equipment and towers they will be bringing in. Burke County Road 1 and Burke County Road 6 are the heart of the county to access all of our fields. We access 40 quarters of land south of Larson and south of Columbus where the towers are proposed to go in. What happens if we can't get our crop in because we don't have access to our fields? Who is going to pay for our lost income of not getting our crop in? We farm 2,335 acres with access from Burke County Road 1 and 1932 acres with access from Burke County Road 6. With a \$200 return per acre that's \$853,400. Is Burke County going to pay us back for not getting our air drills down the roads? Is the wind company going to pay? This is just our farm. Think of all the other farmers in the area who also use these two main roads. The Burke County Commissioners did not let the rest of the construction of Highway 5 get built between Columbus and Lignite last fall because the highway construction crew could not access the asphalt pit due to the county road being shut down to trucks. That decision last fall means that our county roads must be extremely high priority to Burke County.



GoPro wide angle showing Burke County Road 1 in excellent shape for spring 2020.

What about safety in the wind farm area since they are on tillable acres where farmers work on these lands most of the year? I just did a simple Google search and found two things that came up right away. The picture below is from rechargenews.com from February 22, 2019. What happens if we are in the field that day and this happens? How safe are these? This looks very unsafe to be around when we already use large equipment. If these towers are 480 ft high and fall to the north that's a 90 ft drop like I showed in the picture above. How bad would that be? From the Northern Divide Wind map tower 72 on the picture, I showed before, is only 558 feet from the neighbor's field to the north. After the tower falls it could possibly be on the neighbor's field and put him at risk as well. How long will it take to get the mess cleaned up?

WIND [See all articles](#)



Toppled turbine at NextEra Energy Resources' Casa Mesa Wind Energy Center in New Mexico Photo: Shawna Shoemaker Stowe via Facebook

GE turbine collapses at NextEra's latest US wind farm

GE believes failure of recently-installed machine is 'isolated incident' as investigation continues

22 February 2019 21:43 GMT *UPDATED 31 May 2019 12:59 GMT*
By **Richard A. Kessler** in Fort Worth

GE Renewable Energy said it believes a turbine collapse in the US state of New Mexico is “an isolated incident” as an investigation continues. The turbine OEM is

The GE probes third turbine collapse at US wind farms this year

Credit: By Andrew Lee | Recharge | 09 July 2019 | www.rechargenews.com ~~

A GE turbine has collapsed at a wind farm [in Nebraska](#), marking the third such incident involving its turbines in the US this year – although *Recharge* understands investigations of the two earlier failures suggests no common factor behind the spate of dramatic topplings.

The latest turbine came down on 5 July at Invenergy’s 200MW Upstream Wind Energy Center, which only began operations at the beginning of 2019.

Nobody was injured by the collapse of the GE 2.5-116 turbine at the wind farm in Antelope County, near the city of Norfolk.

A spokesperson for GE Renewable Energy told *Recharge*: “GE was notified on 5 July of a 2.5-116 turbine collapse at the Upstream wind farm in Nebraska. GE immediately deployed a team to the site, and is working closely with the wind farm operator to determine the root cause of this incident.

“We stand by the quality and reliability of our turbines, and we are taking immediate action with our customer to resolve this issue. GE Renewable Energy’s best-selling 2MW product platform will have a total installed capacity of more than 15GW by the end of 2019 and operates at an industry-leading average of 98-plus percent availability.”

Invenergy said in a statement sent to *Recharge*: “Invenergy is investigating the incident at Upstream Wind Energy Center. One turbine, a GE 2.5-116, was impacted and the wind farm remains fully operational and is generating electricity.”

The Nebraska incident is the third collapse of a GE machine in the US this year. In February a GE 2.5-127 turbine came down at the Casa Mesa Wind Energy Center [in eastern New Mexico](#), which entered commercial operation in the fourth quarter of last year.

Then in May, a GE 2.4-107 turbine crumpled to the ground at the Chisholm View 2 wind farm [in Oklahoma](#), prompting the launch of an investigation at the project, which entered service in 2016.

As it launches the third collapse inquiry, GE Renewable Energy has identified and addressed the root causes of the two turbine failures earlier this year, *Recharge* understands from sources close to the investigations.

The May incident is understood to be down to an issue experienced during a turbine reboot, which is being addressed with a software update.

The earlier collapse at the Casa Mesa Wind Energy Center, operated by NextEra, is being attributed to a fuse-related blade issue while the turbine was running in overspeed mode during high winds, causing rotor imbalance and tower collapse.

Nobody was hurt in the February or May collapses. The two incidents – now followed by the third in Nebraska – led to questions over a potential common root cause. But *Recharge* understands the two earlier failures are being differentiated and, while the latest investigation is still in its very early stages, it is not immediately being linked to the other two.

Recharge reported after the second incident in May how academics at Birmingham University in the UK said the wind industry needs to develop a better understanding of the complex interplay of factors that can lead to turbine collapse.

Source: By Andrew Lee | Recharge | 09 July 2019 | www.rechargenews.com

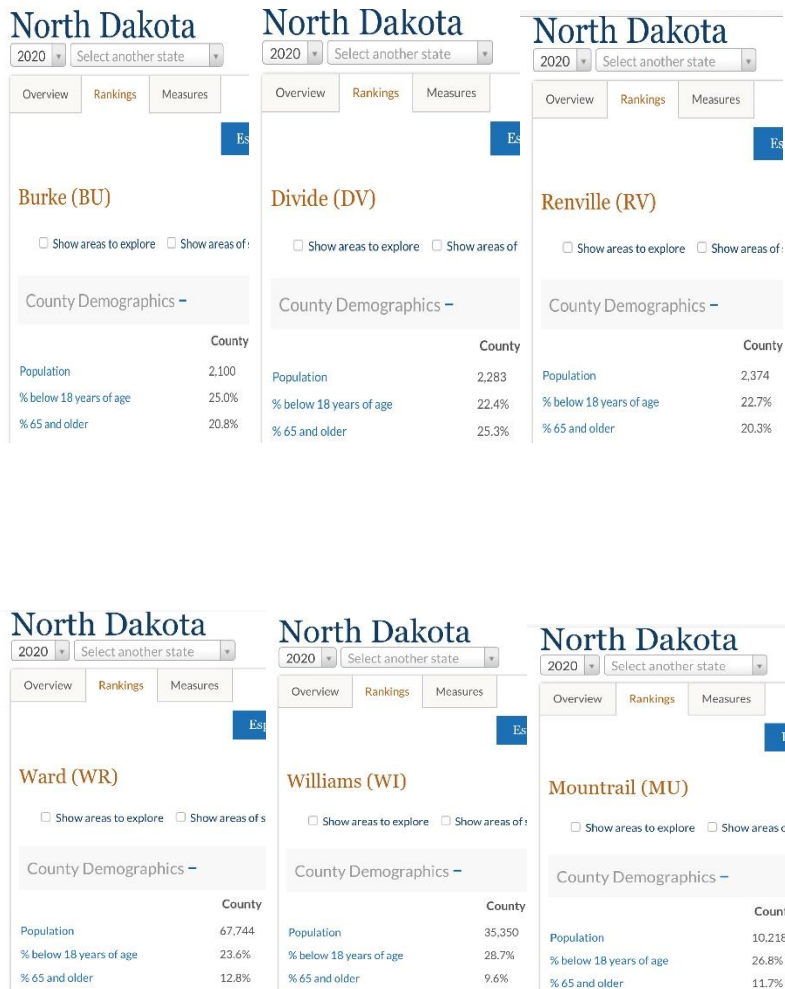
After reading this article, it really puts into perspective how all of them are on tillable acres where farms reside. This puts the safety of all entities in the field (co-ops spraying and fertilizer, etc.) at risk because these towers can collapse at any time!!!

COVID-19 Concerns:

The wind tower company keeps saying they will hire local residents. Most farmers are always looking for help. It's very hard to find workers to run large equipment for us. I am unsure what the unemployment rate in Burke County may be but I'm sure it's very low as of today even with COVID-19. More than likely they will not be able to fill these jobs with local residents so what happens if they need to hire out of state? What happens if their states have a "stay at home" order when they are hired for our local wind tower project? As of today, it looks as if there are more than 300 million Americans in 42 states that are being urged to stay at home. How are they going to get to North Dakota for a job when they are not supposed to leave their state? Their state says they must stay at home for safety and we are going to allow Northern Divide to recruit these workers to our state? Each day our cases of COVID-19 are steadily rising in North Dakota. We recently had 2 positive cases in Burke County. If all of these workers hired by the wind tower company come into our state, are they going to comply with our current guideline to quarantine for 14 days once they get to North Dakota? Will our governor continue to take steps to keep businesses closed? What about gatherings of more than 10 people? We do not have large hotels in the

surrounding areas. We do not have enough housing for the magnitude of workers that would be coming in for this project. How do you pack a hotel full of workers in Crosby or Kenmare? Are they going to send everyone to Minot? All these people will need accommodations for food, thus sending them around to our local grocery stores potentially infecting other residents.

The average age of Burke County residents above the age of 65 is twice the percentage of Ward, Williams and Mountrail counties located south and southeast of us. I contacted the Burke County Health Nurse for more information on average age of residents living in our county. She gave me the website www.countyhealthrankings.org for information. When I searched Burke County and 5 surrounding counties, the average age above 65 was pretty incredible. The counties of Burke, Divide and Renville had twice the percentage of residents 65 or older than Ward, Williams and Mountrail counties. This puts Burke County at an even higher risk of residents getting COVID-19.



How do we control this virus right now with all the uncertainty? Looking at the state health and all the counties that have cases, it is obvious that it is spreading in North Dakota with no way of knowing how

to stop it. Our state has done a great job controlling this outbreak. All of our front-line workers in the medical field are working like crazy to fight this horrible virus. We have never had the state shut down so many businesses before in our history. Surrounding states have more cases than our state, so how do you get workers from those states here without community spread? The one thing about where we live, when one person gets the virus we know where they been and who they were with. We are such a small community that everyone already knows everyone. We take this very, very seriously. We have basically had no contact with anyone except our immediate households and going to the grocery store we try to limit to once a week to minimize exposure. We have most things for the farm shipped in. Every decision we do now can affect so many people and put them at risk, so basically what I'm saying is this is the greatest health risk our generation has ever seen. This is a very scary situation bringing in these huge companies right now to our small area. My father and grandma are both cancer survivors along with many others in the area and coronavirus would be the last thing they would want to get after everything they have had to go through!!!!

Wildlife

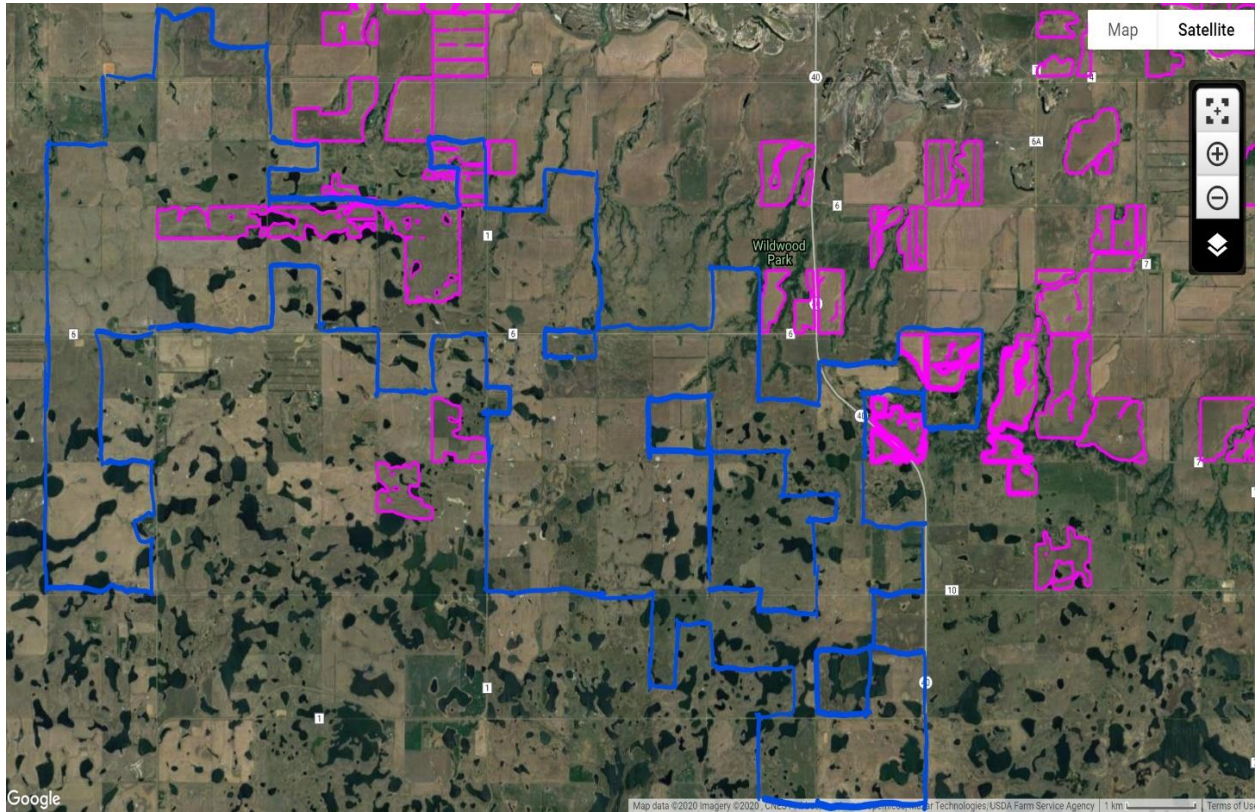
One of the best things in life is hunting in North Dakota and in Burke County. My family has always enjoyed the great outdoors and had that tradition of going out on opening day of deer season with family and friends. First day of pheasant season is always a great time to see everyone come together to enjoy the beauty of Burke County. We get many people who ask to hunt on our land and it seems like most of them always say "wow you guys don't know how lucky you are to live where you do". It is always a great complement to hear especially when people travel thus far to get here. Many of our friends and family travel from the eastern part of the state because the pheasant and goose hunting is amazing here. That must mean North Dakota is doing a great job for wildlife preservation. Just south of Columbus, Larson and Lignite there is amazing habitat for all animals with abundant trees, fields for feeding, water, and steep coulees for animals to take cover from the cold.

On the Northern Divide Wind Tower map, they have all surrounding land greyed out so you are unable to actually see how much water is around the proposed area. Here is a clearer picture to see everything.

Here is a clearer picture to show our land we farm within the proposed wind tower map and as you will notice it shows a large amount of water that provides an amazing habitat for wildlife in the county.

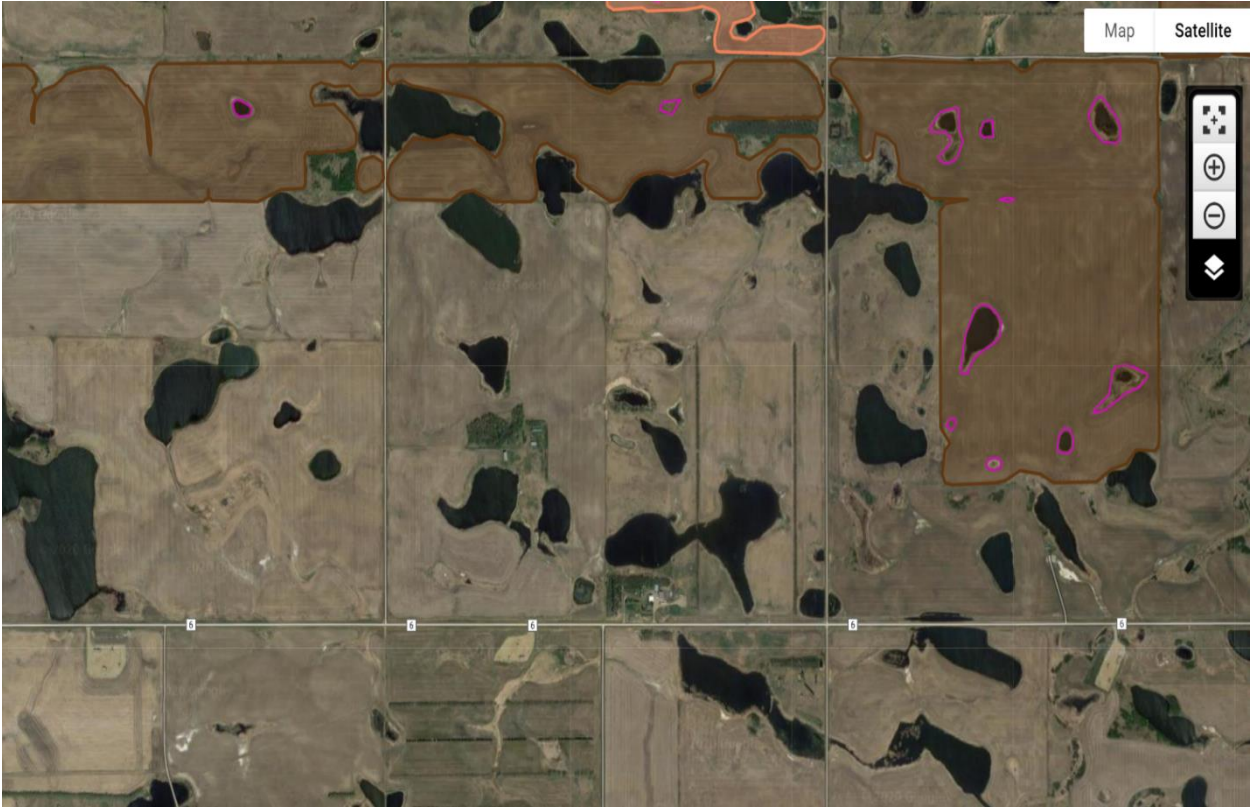
The Purple outlines are the land we farm that people hunt on.

The Blue outlines is the Northern Divide Wind tower area.



You couldn't find a worse place to put a wind farm than where Northern Divide Wind Energy picked.

Picture below is zoomed in view of habitat in Sections 32 , 33, 34 in Keller Township



This is great time of year to get out and see how many geese migrate and feed off the tillable acres that is all within the Northern Divide Wind tower map area.

These Pictures Below are from Monday April 20th 2020 on Section 28, 32, 33, 34 in Keller Township

Looking SE on Section 34 Keller Township where towers 34 ,33 and 32 would be.



Looking east. Section 28 on left , Section 33 on the right Keller Township.



Looking SW where Section 33 and 32 come together in Keller township Where Northern Divide Wind Energy map towers 28,27,26 are proposed to go.



Looking SW on Section 33 Keller Township (North Half)



More of Section 33 Keller Township



It is especially important to preserve wildlife and agriculture in Burke County in every way possible. Agriculture has been here for the last 100 years and will continue to be here for the next 100 years. We are not like other businesses; our business is here to stay where other businesses can have the opportunity to move elsewhere. Northern Divide Wind, LLC proposed wind tower project will majorly affect agriculture, wildlife, and every day living in Burke County. The COVID-19 pandemic is one of the most important things that should also be strongly considered for the safety of our county residents. I strongly feel that wind towers would leave a devastating impact on our lives and our children's lives. It is adamant to leave the county as it was left for us; to live in and enjoy! **This is not only a lifetime decision for us right now, this is a decision that will impact our next generation!**

Thank you for taking the time to read my testimony. I hope I have given you a little more insight towards issues that we face as farmers, hunters, and a small community regarding wind towers. **I will strongly encourage you to vote NO against the proposed Northern Divide Wind, LLC wind tower project in Burke County!**

Respectfully submitted,

A handwritten signature in black ink, appearing to read 'Patrick M. Ely', written in a cursive style.

Patrick M. Ely

9817 Highway 5

Columbus, ND 58727

Burke County resident and landowner