

315 Second Street Southeast  
PO Box 2220  
Jamestown, North Dakota 58402-2220  
701 252-0540  
800 257-4044  
www.otpco.com



March 19, 2020

Steve Kahl  
Interim Executive Secretary  
ND Public Service Commission  
State Capitol  
Bismarck, ND 58505

Dear Steve:

Attached is the Temporary Authority Permit application to serve a new seed and chemical building in Barnes County for Elevation Ag, i.e. Tim Logan.

Please send all correspondence to PO Box 496, Fergus Falls, MN 56538-0496, Attention: Bruce Gerhardson, Legal Department and PO Box 2220, Jamestown, ND 58402-2220 Attention: Charles Krebs.

Sincerely,

A handwritten signature in black ink that reads "Charles Krebs" followed by a circled "es" monogram.

Charles Krebs  
Operations Manager

CC: John Hamre, ND PSC  
Cary Stephenson, Legal Dept. - OTP  
Regulatory Dept. - OTP  
Jeremy Rham, Area Manager - OTP



# HOBART TOWNSHIP

T-140-N : R-59-W  
BARNES COUNTY, NORTH DAKOTA

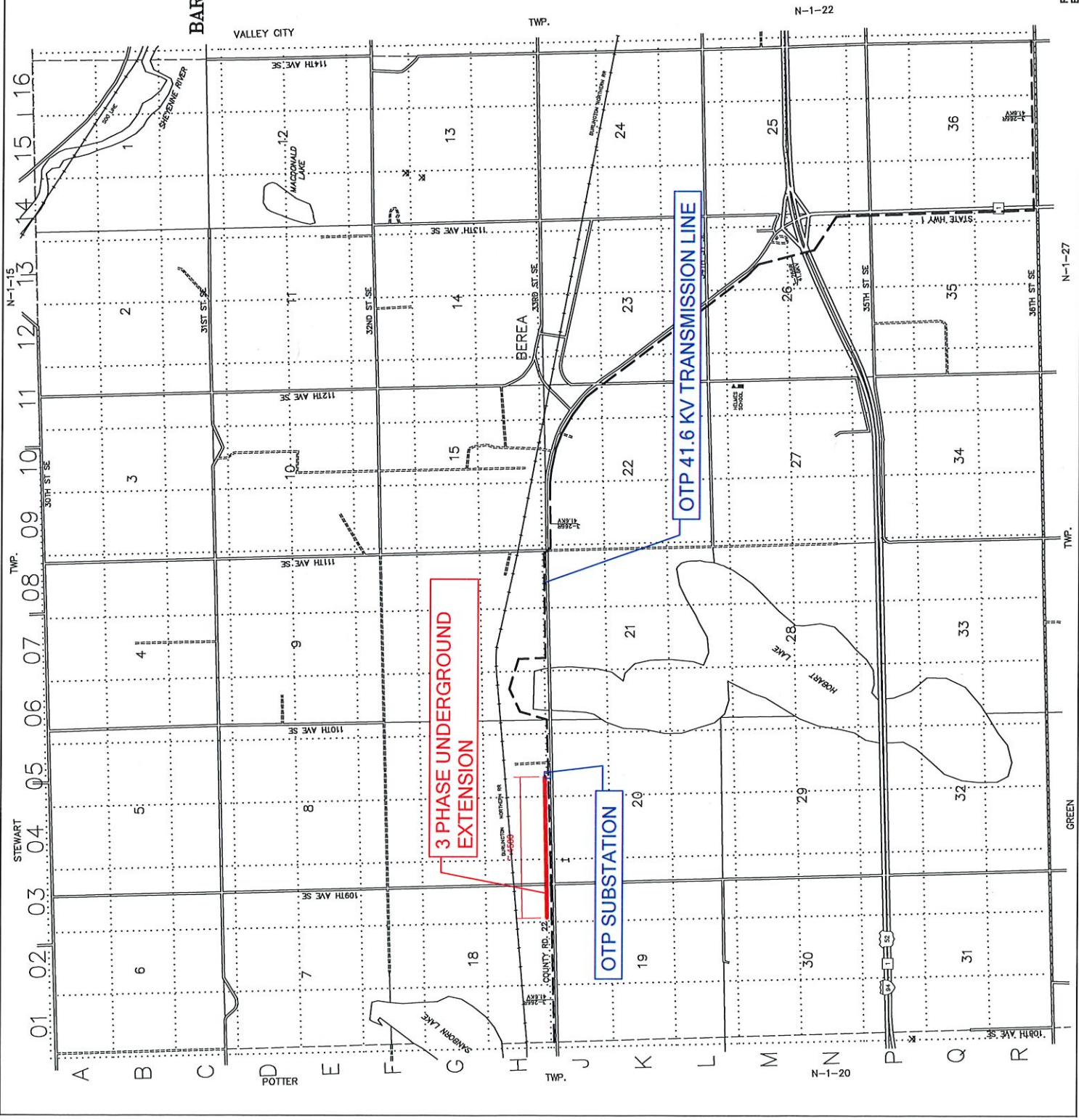
Scale: 1" = 2000'  
BY : S. GUNDERSON

Reference USGS 7.5 minute series  
quadrangle maps:  
Hobart, ND 1970  
Valley City West, ND 1961

LEGEND	
[Symbol]	COUNTRY
[Symbol]	CHURCH
[Symbol]	RAILROAD
[Symbol]	SECTION LINES
[Symbol]	COUNTY LINES
[Symbol]	STATE LINES
[Symbol]	CORPORATE LIMITS
[Symbol]	STATE TRUNK HIGHWAY
[Symbol]	U.S. TRUNK HIGHWAY
[Symbol]	STATE TRUNK HIGHWAY
[Symbol]	RAILROAD
[Symbol]	STATE TRUNK HIGHWAY
[Symbol]	U.S. TRUNK HIGHWAY
[Symbol]	STATE TRUNK HIGHWAY
[Symbol]	COUNTY ROAD
[Symbol]	LOCAL / PRIVATE ROADS
[Symbol]	SHOULDER ROAD

**OTTER TAIL**  
Power Company  
N-1-21  
BARNES COUNTY

REV: 7/27/05  
BY: LJP



N-1-22

N-1-21

N-1-20

STEWART TWP. 01 02 03 04 05 06 07 08 09 10 11 12 13 14 15 16

POTTER TWP. A B C D E F G H J K L M N P Q R GREEN TWP.