

**Application to the
North Dakota Public Service Commission for a
Certificate of Site Compatibility
to Construct the
Bison 4 Wind Project**

Case # PU-13-127

By
Minnesota Power

May 3, 2013



Exhibits

Exhibit 1 Study Area Selection Map

Exhibit 2 Preliminary Layout – 2010 Imagery

Exhibit 3 Preliminary Layout - USGS Topographic Map

Exhibit 4 Exclusion and Avoidance Areas Map

Exhibit 5 NLCD Land Cover Map

Exhibit 6 Prime Farmland Soil Distribution Map

Exhibit 7 Soil Parent Material Map

Exhibit 8 National Wetlands Inventory Map

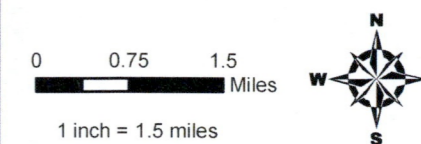
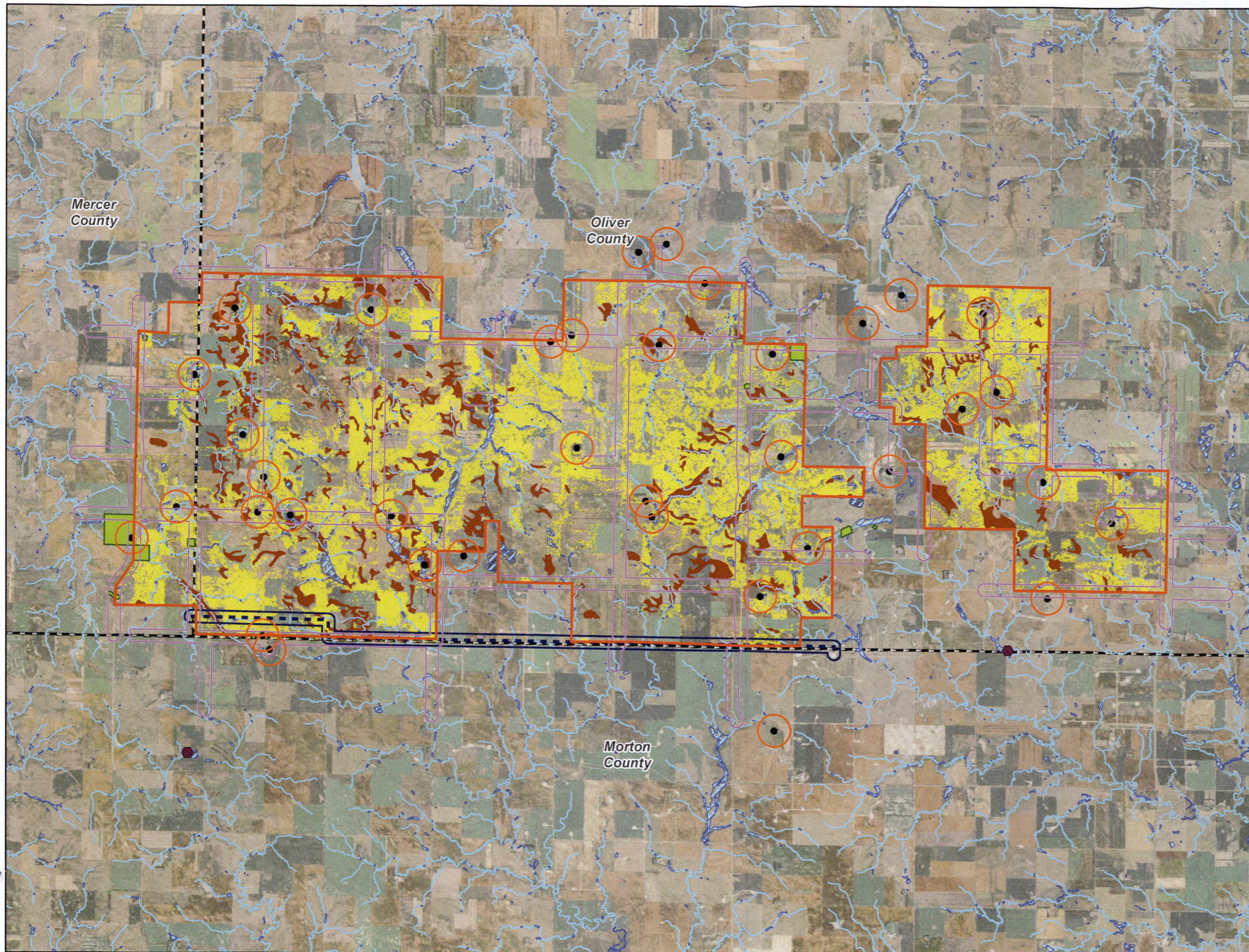
Exhibit 9 Lignite Resources Map

Exhibit 10 Wind Turbine Design Features

Appendices

Appendix A Studies and Assessments

Appendix B Agency Letters



- Occupied Residence
- Threatened or Endangered Species
- - - 230kV Line
- ▭ Preliminary Project Boundary
- ▭ 1400ft Occupied Dwelling Setback
- ▭ 544ft Maintained Road Setback
- ▭ 544ft Transmission Line Setback
- NHD Stream
- ▭ Cultural Site
- ▭ NWI Wetland
- ▭ GAP Landcover Praire
- ▭ Areas of Prime Farmland
- - - County Boundary

Exhibit 4
Exclusion and
Avoidance Areas

Minnesota Power
Bison 4 Wind Project

Mercer and Oliver
Counties, North Dakota