

U.S. DEPARTMENT OF THE INTERIOR
BUREAU OF LAND MANAGEMENT

LAND DESCRIPTION DIAGRAM

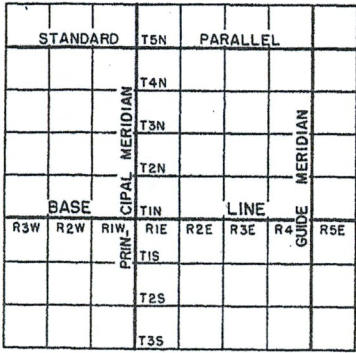


Diagram showing division of tract into Townships

36	31	32	33	34	35	36	31
1	6	5	4	3	2	1	6
12	7	8	9	10	11	12	7
13	18	17	16	15	14	13	18
24	19	20	21	22	23	24	19
25	30	29	28	27	26	25	30
36	31	32	33	34	35	36	31
1	6	5	4	3	2	1	6

Sectional map of Township showing adjoining Sections

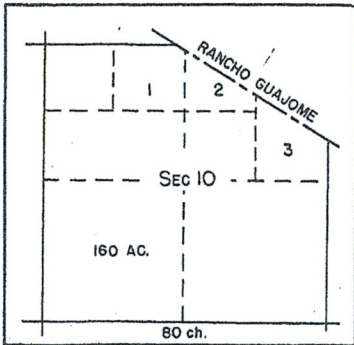
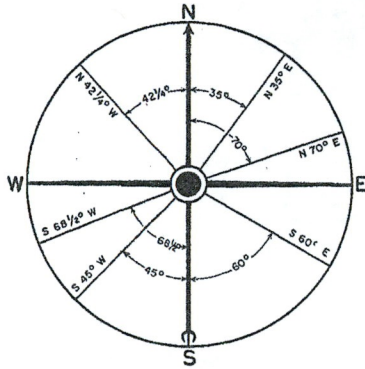
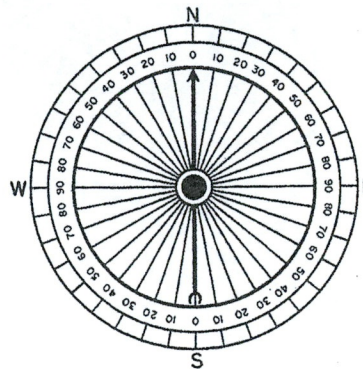


Diagram illustrating division of Fractional Section into Government Lots



60 seconds equal one minute
60 minutes equal one degree



90 degrees in a right angle
360 degrees in a circle

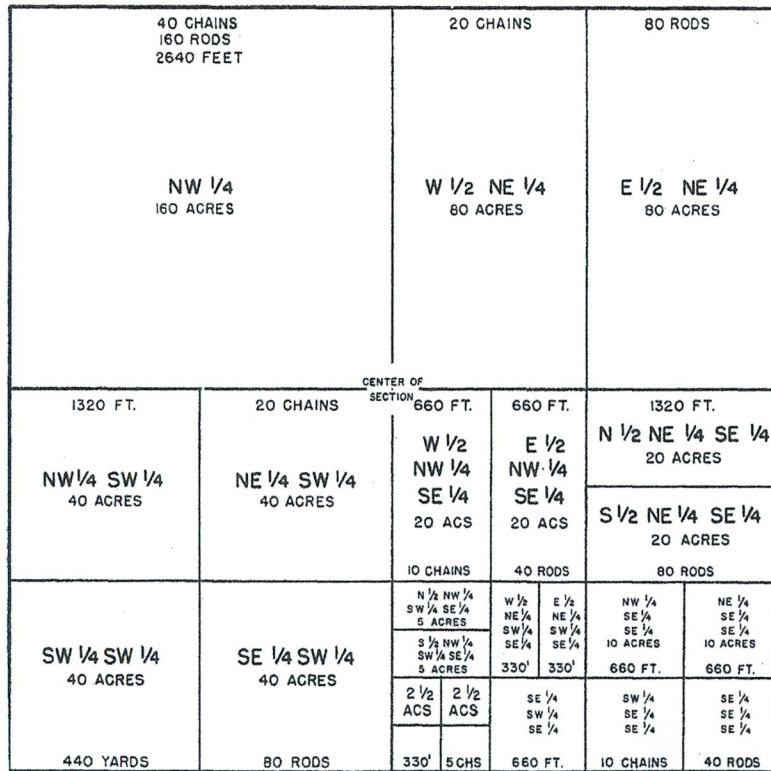


Table of Land Measurements

LINEAR MEASURE

- 1 inch = .0833 ft.
- 7.92 inches = 1 link
- 12 inches = 1 foot
- 1 vara = 33 inches
- 2 3/4 feet = 1 vara
- 3 feet = 1 yard
- 25 links = 16 1/2 feet
- 25 links = 1 rod
- 100 links = 1 chain
- 16 1/2 feet = 1 rod
- 5 1/2 yards = 1 rod
- 4 rods = 100 links
- 66 feet = 1 chain
- 80 chains = 1 mile
- 320 rods = 1 mile
- 8000 links = 1 mile
- 5280 feet = 1 mile
- 1760 yards = 1 mile

SQUARE MEASURE

- 144 sq. in. = 1 sq. foot
- 9 sq. feet = 1 sq. yard
- 30 1/2 sq. yds. = 1 sq. rod
- 16 sq. rods = 1 sq. chain
- 1 sq. rod = 272 1/4 sq. ft.
- 1 sq. ch. = 4356 sq. ft.
- 10 sq. chs. = 1 acre
- 160 sq. rods = 1 acre
- 4840 sq. yds. = 1 acre
- 43560 sq. ft. = 1 acre
- 640 acres = 1 sq. mile
- 1 sq. mile = 1 section
- 36 sq. miles = 1 Twp.
- 6 miles sq. = 1 Twp.
- 1 sq. mi. = 2.59 sq. kilm

An Acre is:

- 43,560 sq. feet.
- 165 feet x 264 feet.
- 198 feet x 220 feet.
- 660 feet x 66 feet.
- 160 square rods.
- 208' 8" square.

or any rectangular tract, the product of the length and width of which totals 43,560 sq. ft.

Square Measure

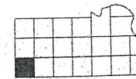
4840 Sq. Yds. 1 Acre
640 Acres 1 Sq. Mile

1 Sq. Mile 1 Section
36 Sq. Miles . . . 1 Civil town

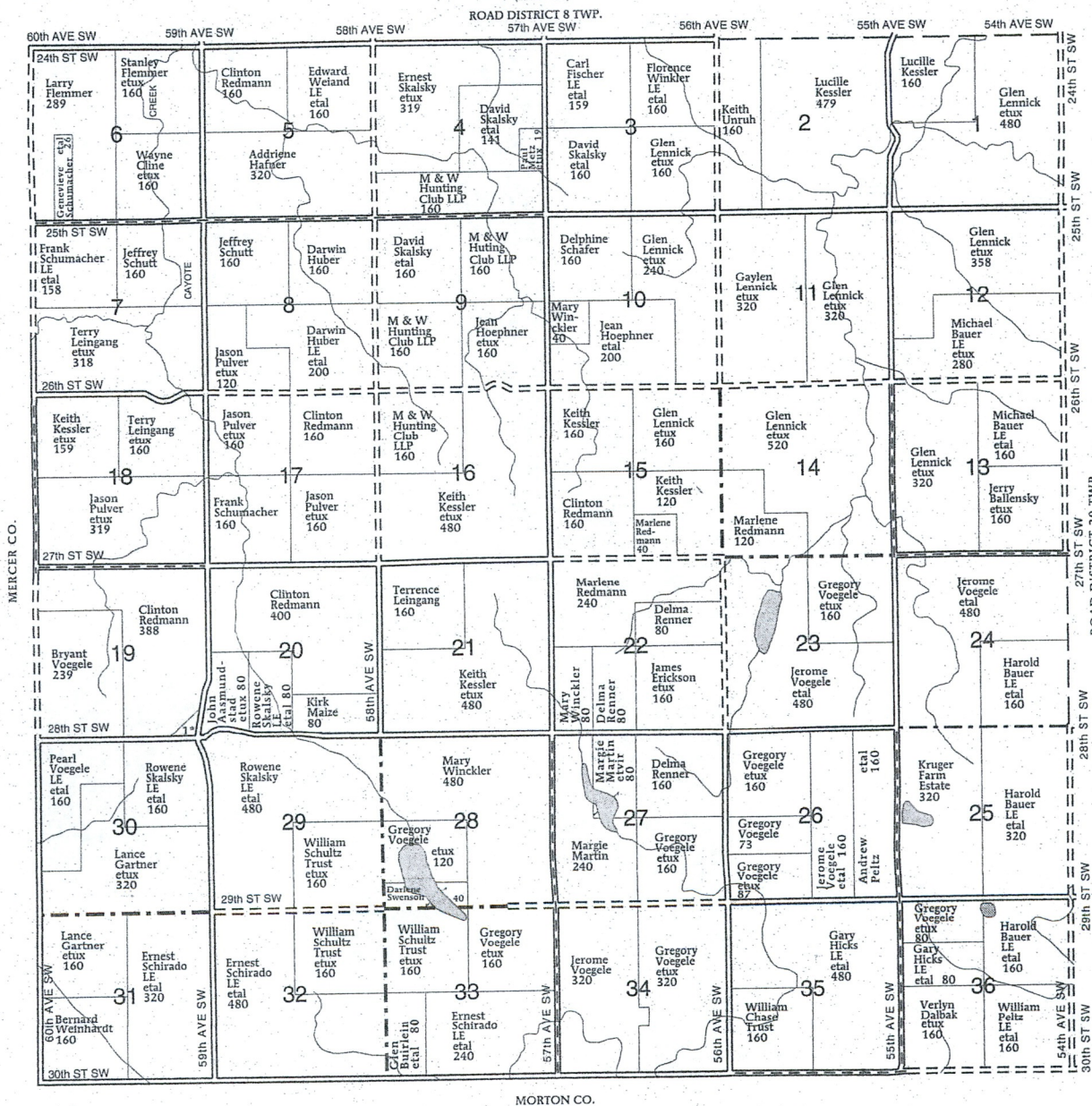
80 Rods Sq 40 Acres
6 Miles Sq 1 Civil town

T-141-N

ROAD DISTRICT 21 PLAT



R-87-W



**ROAD DISTRICT 21
TOWNSHIP
SECTION 19**

1. Aasmundstad, John B

© Farm & Home Publishers, Ltd.

P-2

