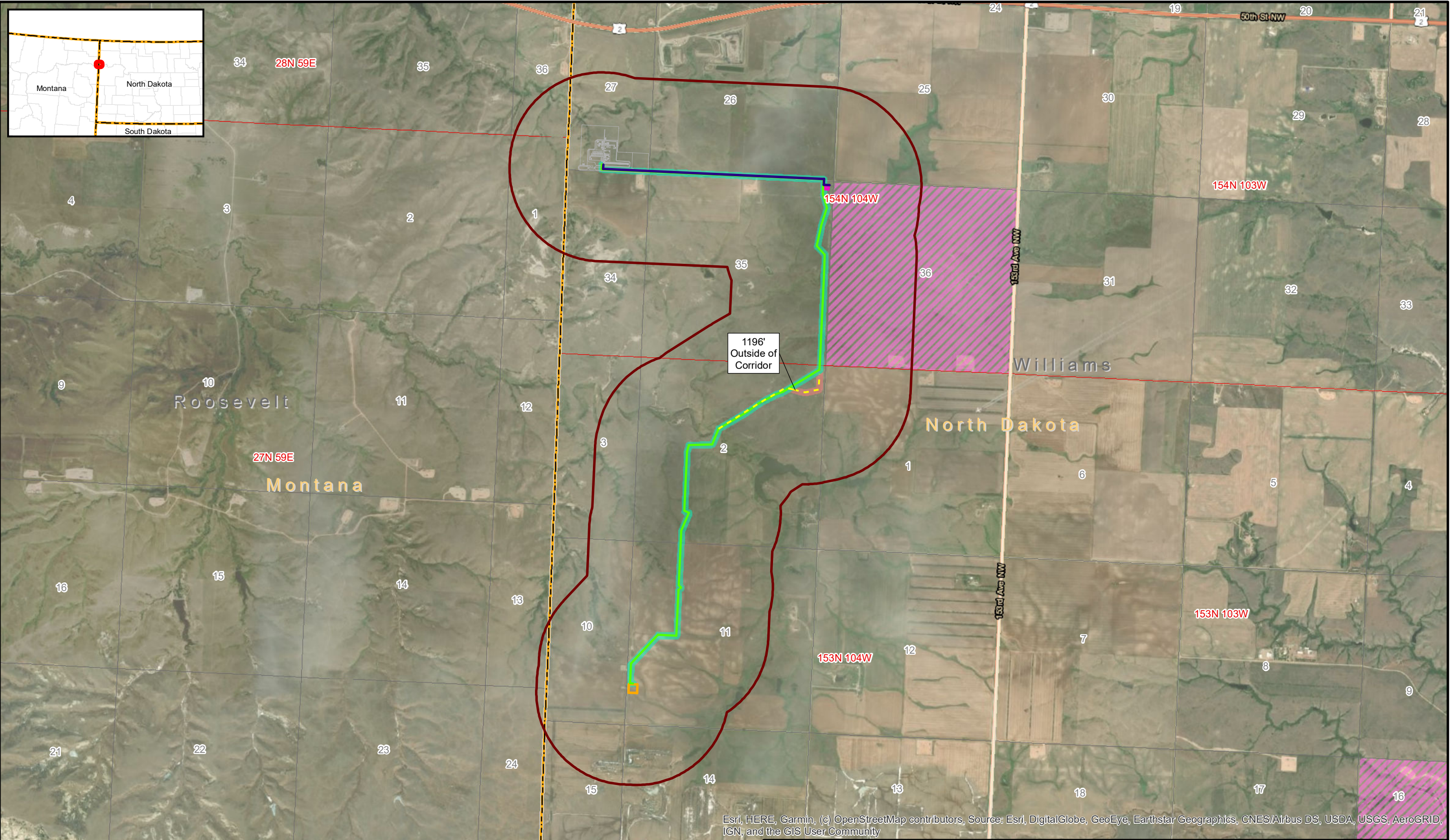
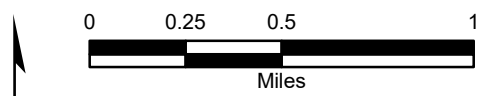


Date: 9/2/2020 User: ALeonard Path: \\azrgis\storp01\GIS_Projects\Client\OutriggerEnergy\20203533_SandersonGasPlant\MXD\PSC\OE_PSC_Fig1_Overview.mxd



Esri, HERE, Garmin, (c) OpenStreetMap contributors, Source: Esri, DigitalGlobe, GeoEye, Earthstar Geographics, CNES/Airbus DS, USDA, USGS, AeroGRID, IGN, and the GIS User Community

LEGEND			
	NGL 8in Steel Pipeline		Study Area
	Residue 20in Steel Pipeline		Site Features
	Residue 20in Steel Pipeline Re-route		State Land
	NGL Meter Site		Township/Range
	Residue Meter Site		Section
			County Boundary



The information included on this graphic representation has been compiled from a variety of sources and is subject to change without notice. Kleinfelder makes no representations or warranties, express or implied, as to accuracy, completeness, timeliness, or rights to the use of such information. This document is not intended for use as a land survey product nor is it designed or intended as a construction design document. The use or misuse of the information contained on this graphic representation is at the sole risk of the party using or misusing the information.

PROJECT NO.	20203533
CREATED:	9/2/2020
CREATED BY:	A. Leonard
CHECKED BY:	A. Daniel
FILE NAME:	OE_PSC_Fig1_Overview.mxd

Project Overview Map	1