

June 8<sup>th</sup>, 2020

Mr. Patrick Fahn  
North Dakota Public Service Commission  
600 E. Boulevard Ave., Dept. 408  
Bismarck, ND 58505-0480

**RE: Request for Jurisdictional Determinations of Proposed 10.5-Mile, 8-Inch Carbon Steel Crude Oil Gathering Line and Associated Crude Facility**

Dear Mr. Fahn,

This letter is in compliance with Chapter 69-06-02.1 of the North Dakota Administrative Code Requesting for Jurisdictional Determination of the following sites to be developed by Bayou Midstream.

1. 10.5 mile 8" carbon steel gathering pipeline originating at Bayou Midstream's Crane Creek Crude Facility and terminating at DAPL's Stanley Facility. (8" Gathering Line)
2. Crane Creek Crude Facility

Bayou Midstream, LLC (Bayou) is proposing to construct a low pressure pipeline approximately 10.5-miles in length connecting the greenfield crude oil gathering system (Crane Creek Gathering System) to Dakota Access Pipeline (DAPL) Stanley Station located 3-miles West of Stanley, South of U.S. Highway 2 in Mountrail County, ND. In addition to the pipeline, Bayou is also planning to construct a small crude facility (Crane Creek Crude Facility) where the 10.5-pipeline originates. The pipeline and facility will be owned, operated, and maintained by Bayou Midstream. All equipment maintenance performed by Bayou operations will follow vendor and industry requirements.

The proposed project will gather crude from multiple well pads where it will flow into four 1000-bbl tanks at the Crane Creek Crude Facility. The outlet at the tanks will tie into three pumps that will boost the pressure feeding into the 10.5-mile pipeline to DAPL Stanley Station. Three attachments have been provided to use as visual references in conjunction with this document: Attachment 1 - Schematic depiction of the Crane Creek Gathering system, Attachment 2 - Overview map and Grid Maps of entire Crane Creek Gathering System, and Attachment 3 - Site layout for the Crane Creek Crude Facility.

Crude oil will be transported by Bayou Midstream from well pads owned by Kraken Oil and Gas (Kraken) in Mountrail County. The LACTs will pump crude oil into the Crane Creek Gathering System upstream of the Crane Creek Crude Facility which will be made up of 4-inch FlexPipe and 6-inch FlexSteel pipelines. The Crane Creek Crude Facility will contain minimal (4000 bbls) of operational storage and will boost the pressure of the flowing crude to overcome hydraulic friction losses to reach DAPL's Stanley Facility. Bayou Midstream will have the ability to bypass the tanks and flow directly to the pumps at the Crane Creek Crude Facility. Once crude exits the pumps it will enter the 8-inch carbon steel line and terminate at the DAPL Stanley Station approximately 10.5-miles away; the 8-inch gathering pipeline described as item 1 for jurisdictional review. See below for further details.

1. A description of the size of the facility

- a. 8" Gathering Line: 10.5 mile 8" Gathering Pipeline with an MAOP of 740 psi.
  - b. Crane Creek Crude Facility: 4000 bbl operational storage, 3 pipeline pumps (each rated for 9,500 BPD at 450 PSIG), connection pipe header located on a 2.4-acre site.
2. A description of the type of facility
  - a. 8" Gathering Line: Gathering pipeline originating at the Crane Creek Crude Facility and terminating at the DAPL Stanley Facility
  - b. Crane Creek Crude Facility: 4000 bbl storage facility and crude booster station
3. A description of the area to be served
  - a. 8" Gathering Line: Kraken's Mountrail County development field
  - b. Crane Creek Crude Facility: Kraken's Mountrail County development field
4. A map of the study area for the proposed site or corridor:
  - a. 8" Gathering Line: See Attachments 1 & 2
  - b. Crane Creek Crude Facility: See Attachment 3
5. A description of the ownership and operation responsibility of the facility
  - a. 8" Gathering Line: Bayou Midstream will own and operate this pipeline
  - b. Crane Creek Crude Facility: Bayou Midstream will own and operate this facility
6. A description of the facilities and equipment that will be used and how they will be maintained:
  - a. 8" Gathering Line: 8" carbon steel Sch. 20, Gr. 52, FBE Coated PSL 2 pipe, double random; maintained by ROW survey, mass balance leak detection, 24-7 control room monitoring and periodic pipeline pigging
  - b. Crane Creek Crude Facility: 4 – 1000 bbl crude tanks, pig launcher, pig receiver, facility shut down valve, facility pressure reducing valve, truck connection, inlet manifold, discharge manifold, pipeline booster pumps, and a bypass valve.; maintained with pressure transmitters, tank containment leak detection, site inspections, local automation, and 24-7 control room monitoring
7. A description of the owner's plans for selling, transmitting, or distributing the output of the plant
  - a. The crude will flow out of the Crane Creek Crude Facility up the 8" Gathering Line to the DAPL Stanley terminal. In the event, that there is a shutdown downstream of the Crane Creek Crude Facility, the facility will have the ability for crude trucks to haul crude from the 4 crude tanks.
8. A description of how the facility will be physically and electronically interconnected with other energy conversion, transmission, and distribution facilities.
  - a. 8" Gathering Line: NA
  - b. Crane Creek Crude Facility: connected upstream and downstream to Bayou Midstream's Crane Creek crude gathering system and have 480-volt power drop from the adjacent power line
9. A description of the owner's economic evaluation
  - a. Both sites are part of Bayou's Crane Creek gathering system development which will be installed to support Kraken's oil and gas development in Mountrail County. The economics are supported by Kraken paying Bayou Midstream a gathering fee per barrel of crude transported to DAPL.
10. A description of how the site will be leased
  - a. 8" Gathering Line: Bayou will negotiate ROW / Easement with all landowners along the path of the pipeline

Crane Creek Crude Facility: Bayou will negotiate an SUA (Surface Use Agreement) lease for the 2.4-acre site from the landowner.

If any questions, concerns, or if additional information required, please feel free to contact me at:

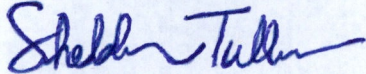
Cell: (979) 257-8089

Office: (346) 249-8348

E-mail: [stullos@bayoumidstream.com](mailto:stullos@bayoumidstream.com)

Sincerely,

Bayou Midstream, LLC

A handwritten signature in blue ink that reads "Sheldon Tullos". The signature is fluid and cursive, with the first name being more prominent.

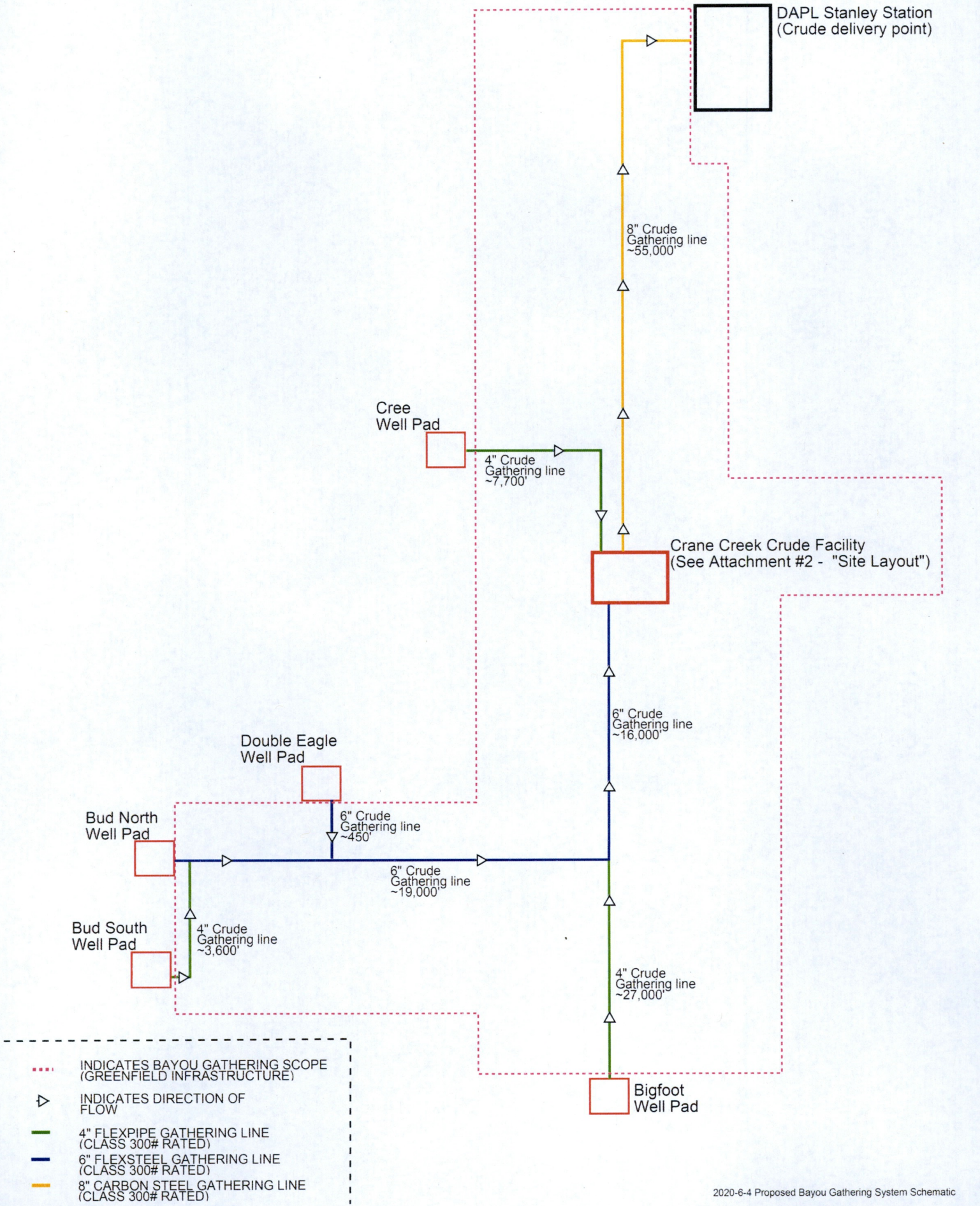
Sheldon Tullos

Director of Engineering

820 Gessner Rd., Suite 1450

Houston, TX 77024

**Attachment 1**



DAPL Stanley Station  
(Crude delivery point)

8" Crude  
Gathering line  
~55,000'

Cree  
Well Pad

4" Crude  
Gathering line  
~7,700'

Crane Creek Crude Facility  
(See Attachment #2 - "Site Layout")

Double Eagle  
Well Pad

6" Crude  
Gathering line  
~16,000'

Bud North  
Well Pad

6" Crude  
Gathering line  
~450'

6" Crude  
Gathering line  
~19,000'

Bud South  
Well Pad

4" Crude  
Gathering line  
~3,600'

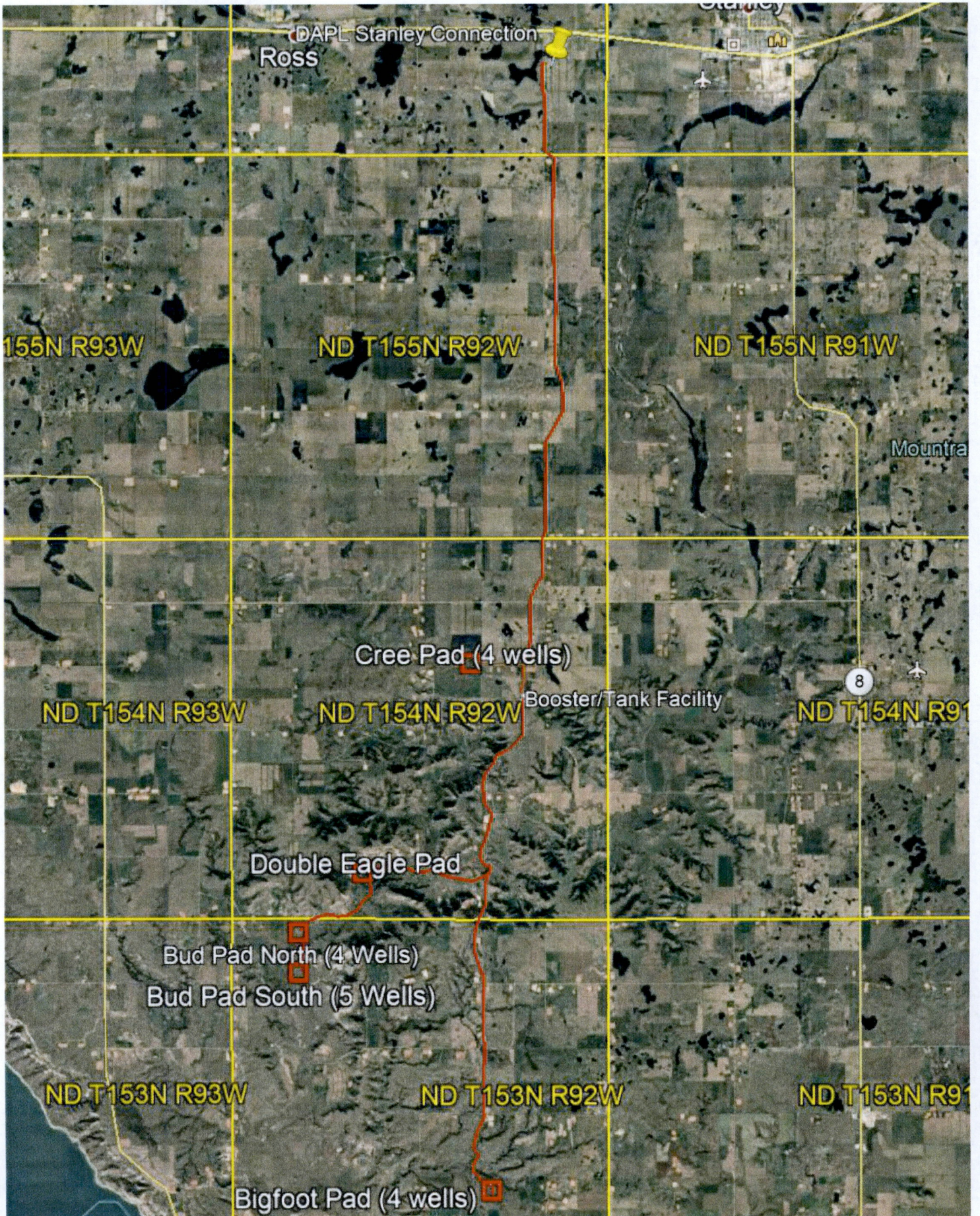
4" Crude  
Gathering line  
~27,000'

Bigfoot  
Well Pad

- ..... INDICATES BAYOU GATHERING SCOPE (GREENFIELD INFRASTRUCTURE)
- ▷ INDICATES DIRECTION OF FLOW
- 4" FLEXPIPE GATHERING LINE (CLASS 300# RATED)
- 6" FLEXSTEEL GATHERING LINE (CLASS 300# RATED)
- 8" CARBON STEEL GATHERING LINE (CLASS 300# RATED)

**Attachment 2**

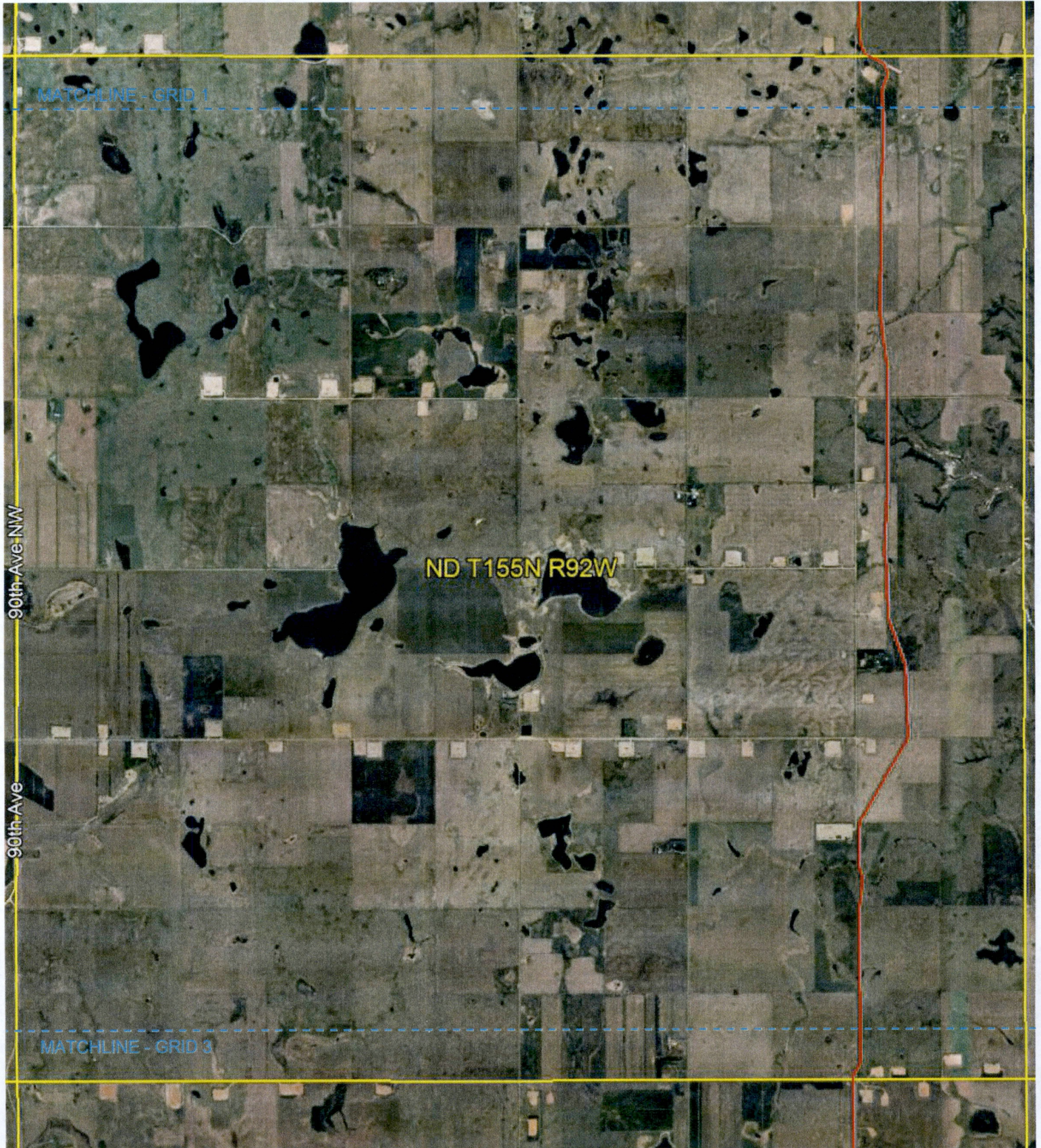
# CRANE CREEK GATHERING SYSTEM OVERVIEW MAP



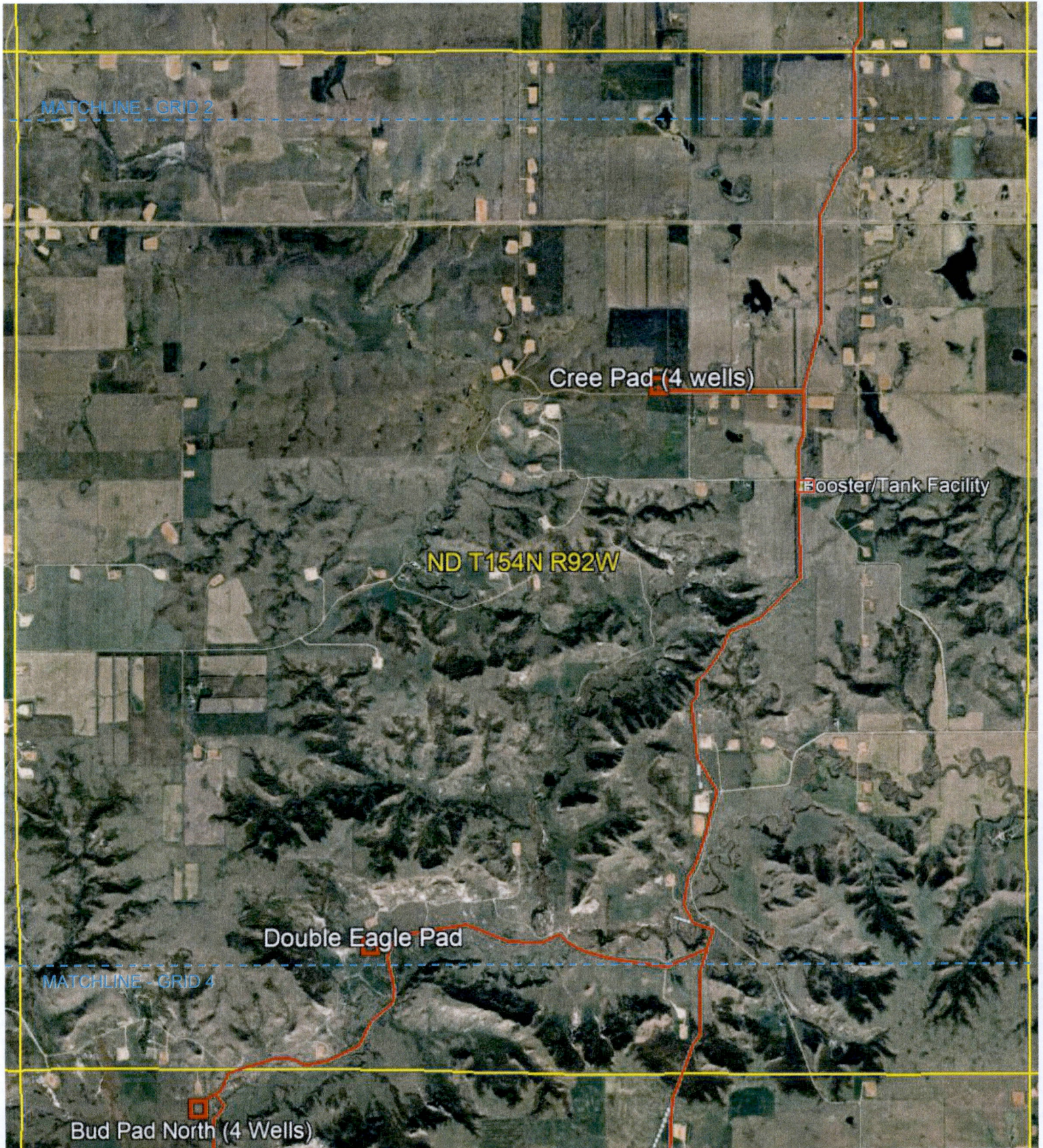
CRANE CREEK GATHERING SYSTEM - GRID MAP - 1



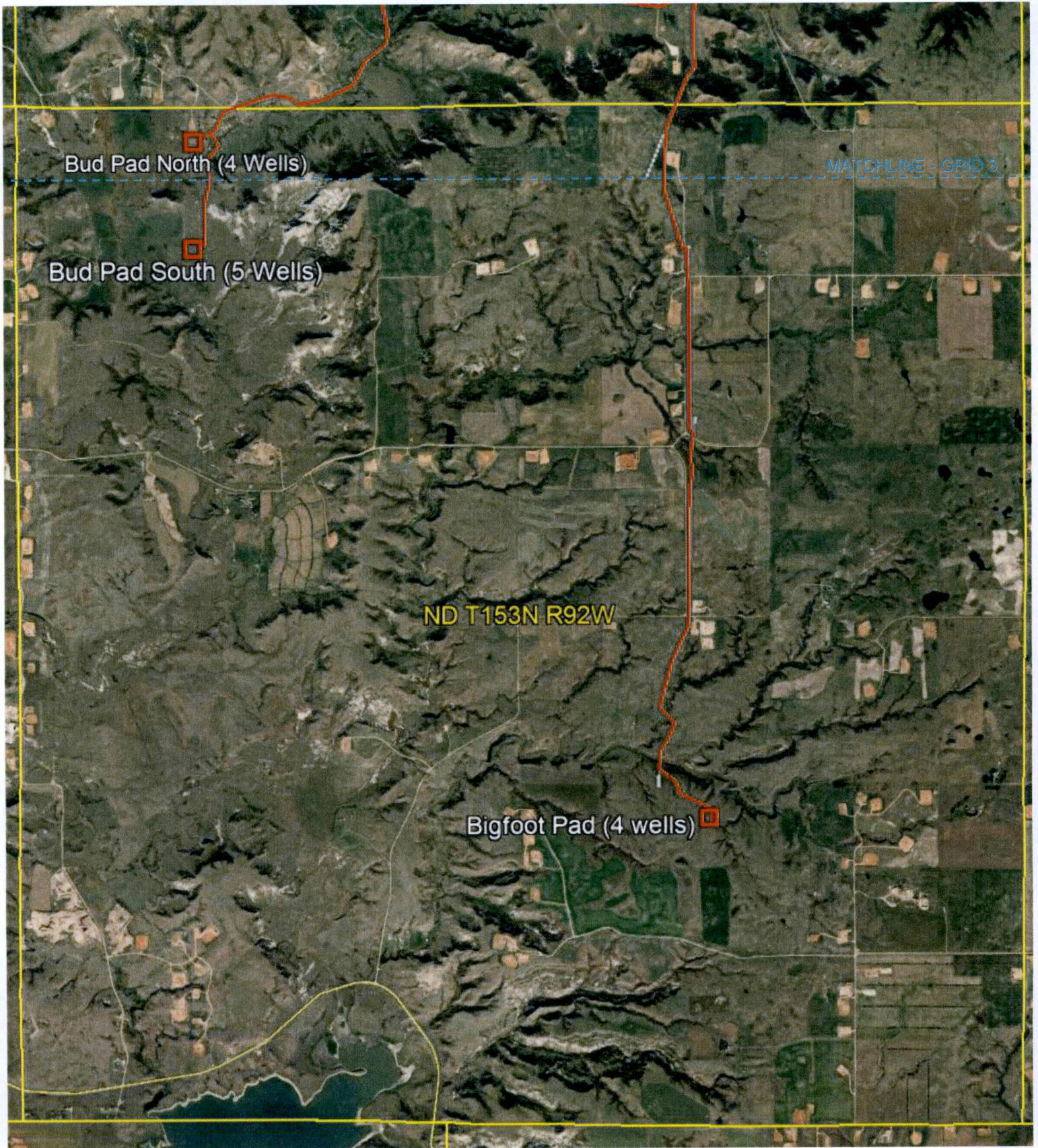
CRANE CREEK GATHERING SYSTEM - GRID MAP - 2



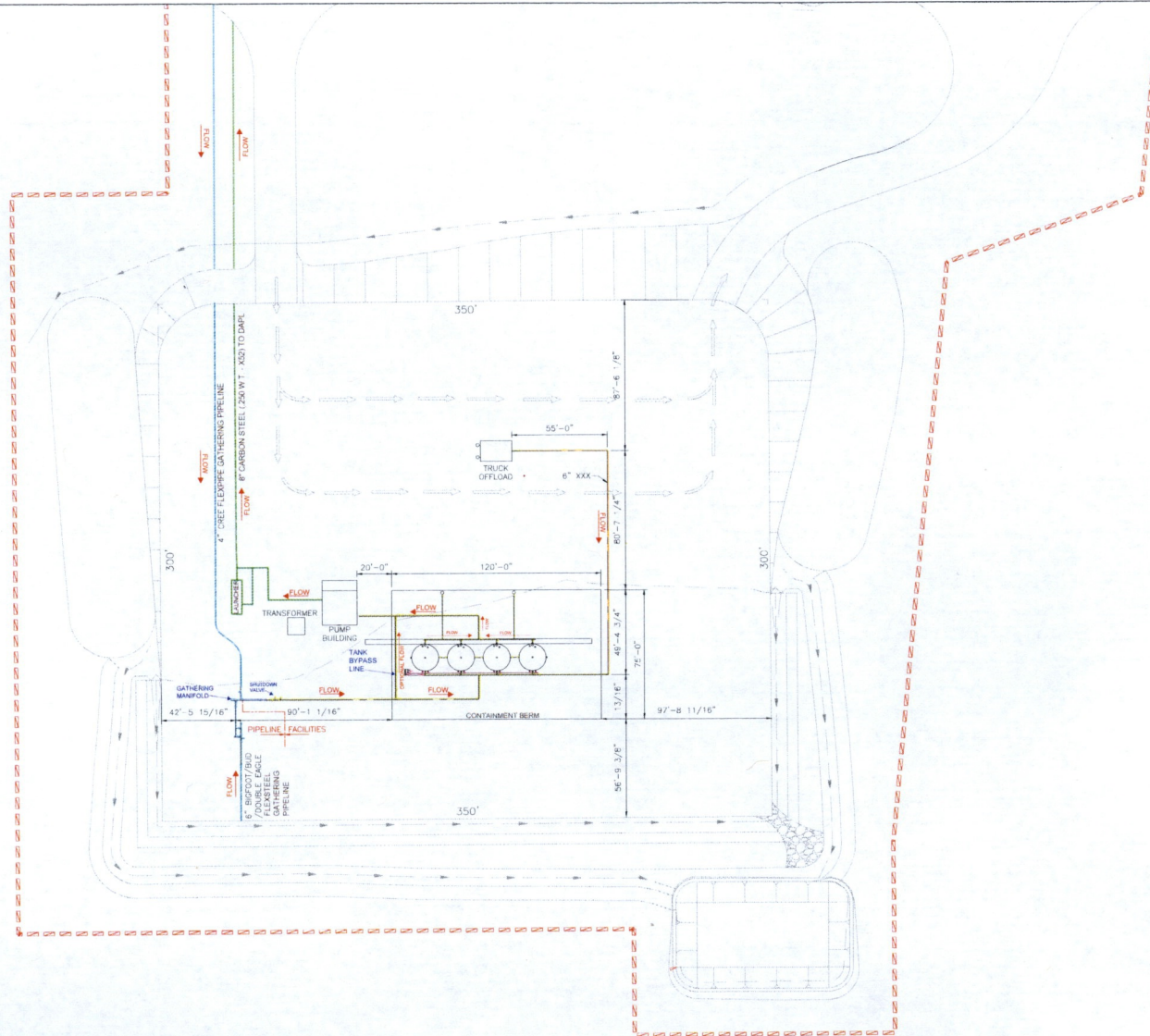
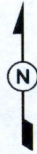
CRANE CREEK GATHERING SYSTEM - GRID MAP - 3



CRANE CREEK GATHERING SYSTEM - GRID MAP - 4

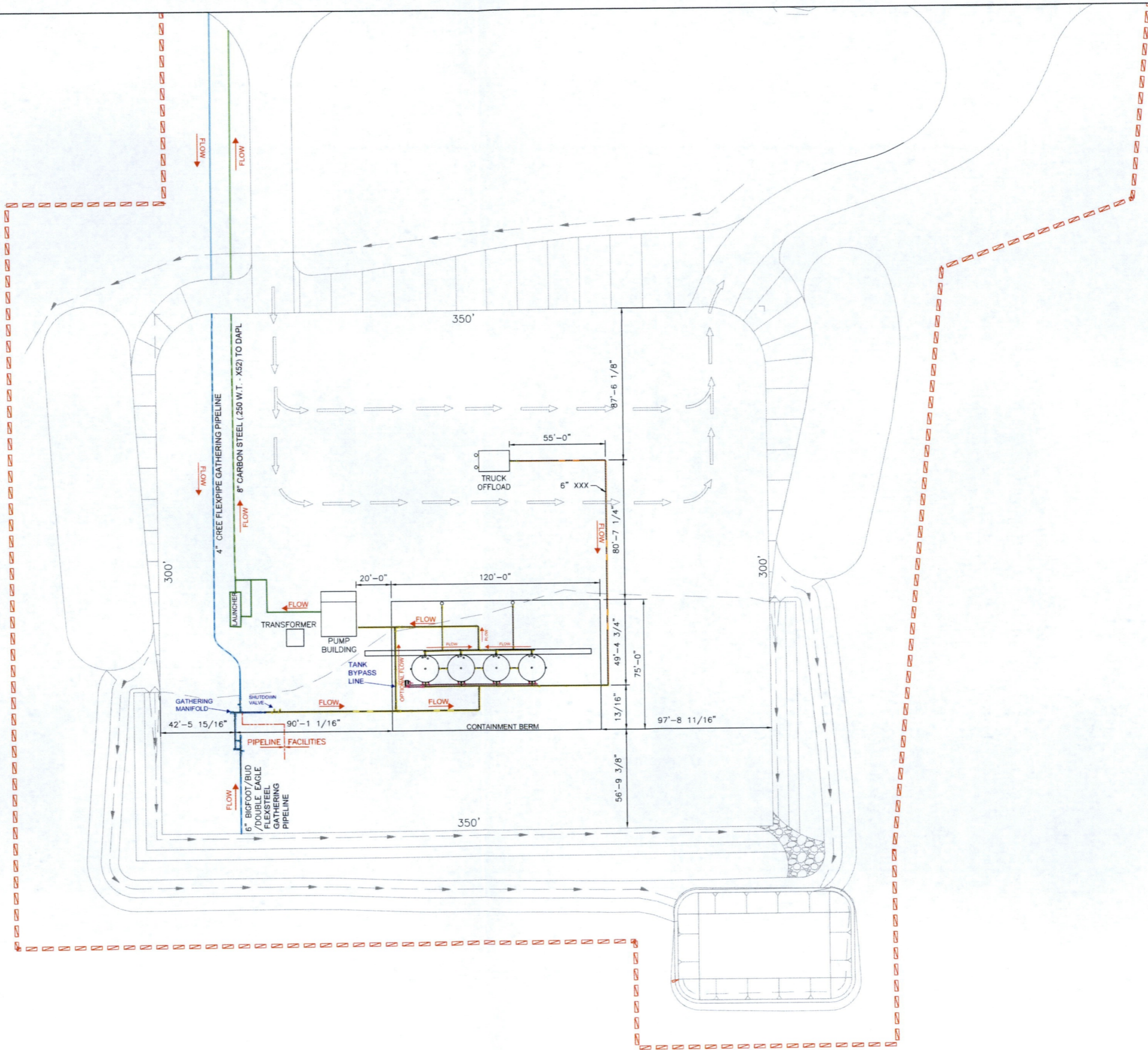


**Attachment 3**



REVISION		APPROVAL					PROJECT INFORMATION		DRAWING INFORMATION		
REV No	DATE	DESCRIPTION	CAD	CHK	ENG	APP	PM	BAYOU MIDSTREAM MOUNTRAIL CO. NORTH DAKOTA USA		CRANE CREEK GATHERING SYSTEM CRANE CREEK CRUDE FACILITY SITE LAYOUT	
A	3/19/20	ISSUED FOR REVIEW	WRK	WRK	WRK	MLS	MLS	BLC PROJECT NUMBER 20.019		SCALE 1/32"=1'-0"	BM-CC-001

PLOTTED SIZE: ANSI EXPAND D (34x22)



REVISION			APPROVAL					PROJECT INFORMATION		DRAWING INFORMATION	
REV No	DATE	DESCRIPTION	CAD	CHK	ENG	APP	PM	BAYOU MIDSTREAM MOUNTRAIL CO. NORTH DAKOTA USA		CRANE CREEK GATHERING SYSTEM CRANE CREEK CRUDE FACILITY SITE LAYOUT	
A	3/19/20	ISSUED FOR REVIEW	WRK	WRK	WRK	MLS	MLS	BLC PROJECT NUMBER 20.019	SCALE 1/32"=1'-0"	BM-CC-001	
										PLOTTED SIZE: ANSI EXPAND D (34x22)	