

February 22, 2021

*Via Electronic Mail & Hand Delivery*

Mr. Adam Renfandt  
Public Utilities Analyst  
North Dakota Public Service Commission  
600 E. Boulevard, Dept. 408  
Bismarck, ND 58505-0480  
[arenfandt@nd.gov](mailto:arenfandt@nd.gov)  
[ndpsc@nd.gov](mailto:ndpsc@nd.gov)

**In re: Response to Request for Information  
Bridger Pipeline LLC  
Case No. PU-20-430  
Our File No. 016265-000017**

Dear Mr. Renfandt:

On behalf of Bridger Pipeline LLC, the following information is provided in accordance with the Commission's February 9, 2021 Motion.

**Request for Information No. 1.**

Staff's November 3, 2020 Information Request No. 1 requested that the Exhibit A.1 map set be updated to include the Little Missouri National Grasslands and State Trust Lands. An updated Exhibit A.1 map set that includes the above-referenced information is attached for filing. For reference, and as stated in Bridger's January 29, 2021 filing, the Little Missouri National Grasslands is located within the Project's one-mile Study Area, however it is not located within the Project's 300-foot Corridor. With respect to State Trust Lands, these areas are located within the Project's one-mile Study Area, however, these areas are not designated Exclusion or Avoidance Areas nor are they located within the Project's 300-foot Corridor.

**Request for Information No. 4.**

Staff's November 3, 2020 Information Request No. 4 pertained to Application Section 5.13 regarding areas of potential geologic instability. Responses to Request No. 4 are broken out and provided below.

Part 1. Section 5.13 indicates that one area located within the proposed corridor cannot be eliminated as a landslide prone area. Is this the same area as located on page ten of Appendix A, Figure 1.A and indicated as a landslide prone area?

Answer: Yes.

Part. 2. Will the company perform any geological evaluations on this site to definitively rule out whether this is a geologically unstable area, and then file copies with the Commission upon completion?

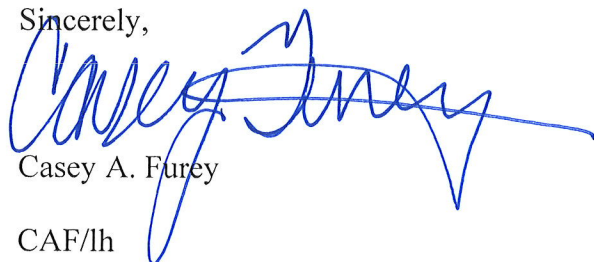
Answer: Bridger is working with its consultant to review this area in more detail to determine whether further geological evaluation is necessary. Bridger's consultant will testify at the Project's hearing regarding the scope of the analysis conducted, its findings, and whether further evaluation is recommended.

Part 3. Is this the only potential landslide area located within the proposed corridor?

Answer: North Dakota Geological Survey (NDGS) data is used to identify general areas of potential geologic instability. This data does not conclusively identify landslide prone areas and is used as guidance to identify areas for further review. Review of NDGS data identified ten areas of potential geologic instability within the 300-foot Project Corridor. These areas are depicted on the updated map set attached hereto. Bridger's consultant is reviewing these areas in more detail and will testify at the Project's hearing regarding the scope of the analysis conducted, its findings, and whether further evaluation is recommended.

A ShareFile link to the updated map set is being provided. A USB drive containing the updated map set along with hard copies will also be hand delivered. Please feel free to contact me if you have any questions. Thank you.

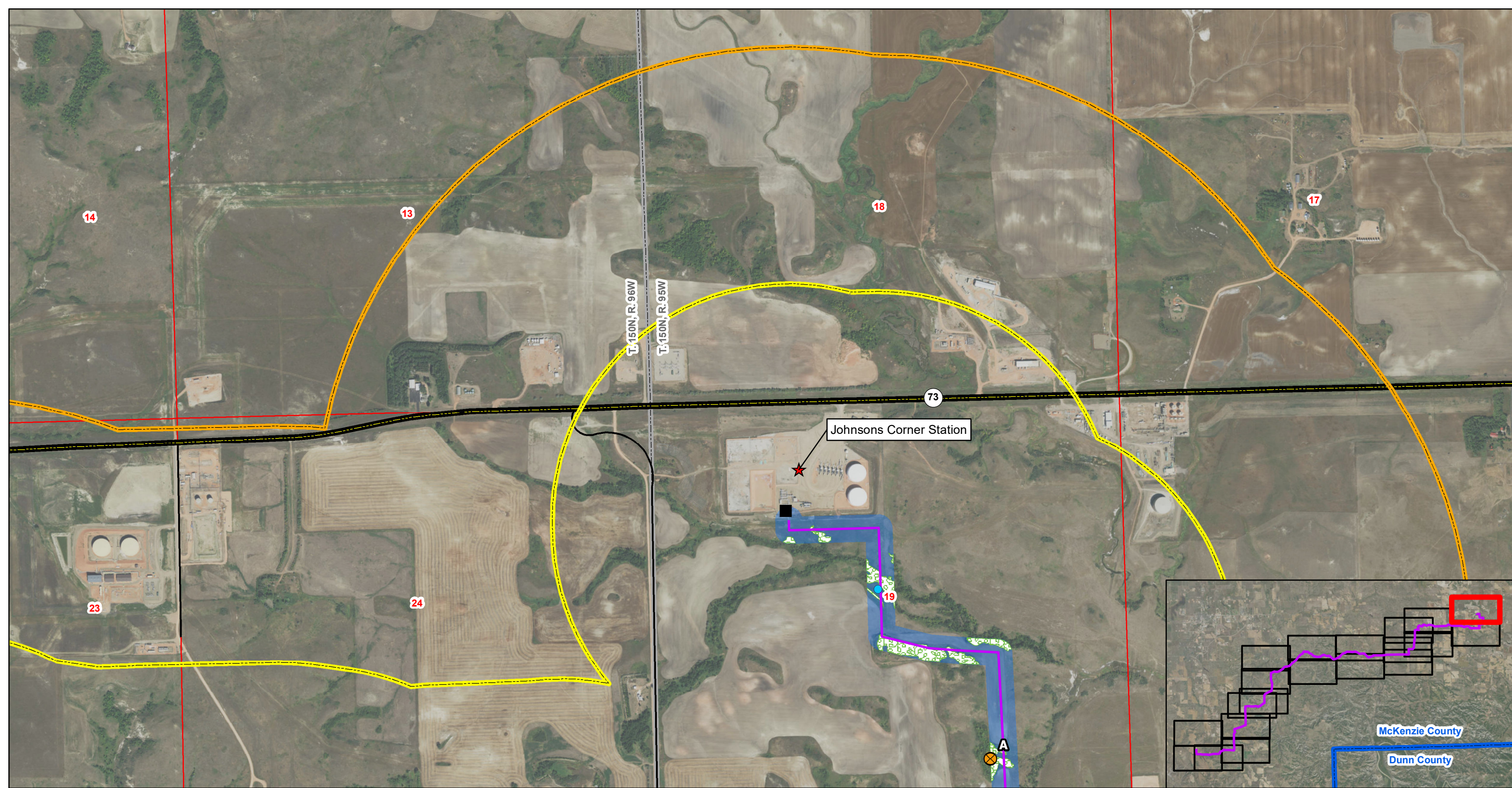
Sincerely,



Casey A. Furey

CAF/lh  
Enc.

cc: Distribution List (Doc. #10,624,580)

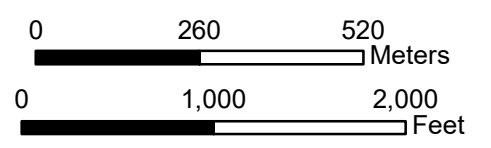


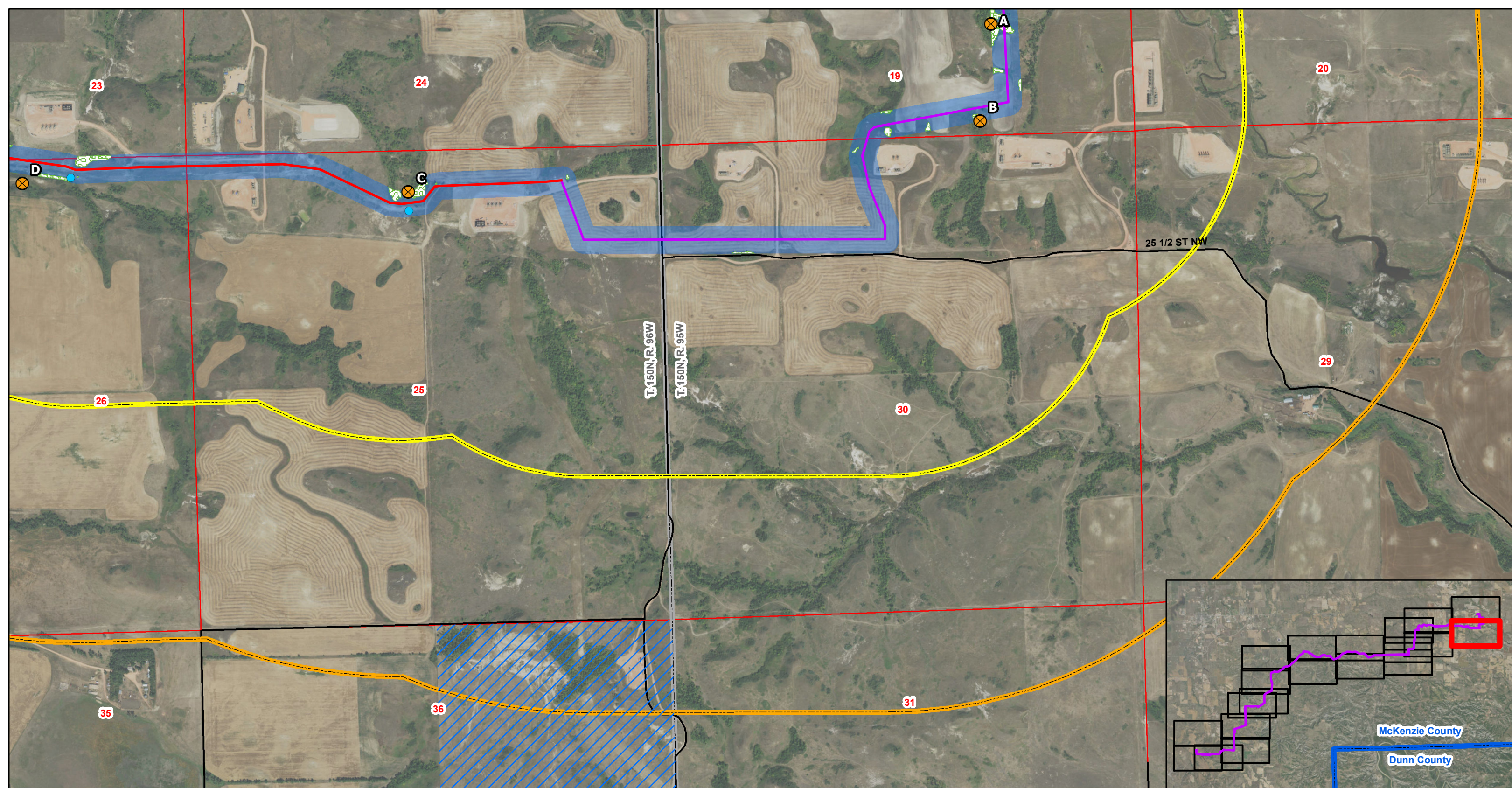
### Johnson's Corner to Wilson Station

- |                 |                                 |                 |                           |                       |                           |
|-----------------|---------------------------------|-----------------|---------------------------|-----------------------|---------------------------|
| ★ Facility      | ⊗ Potential Area of Instability | — Named Streams | ■ 300ft Pipeline Corridor | ▨ ND Trust Lands      | □ Section Boundary        |
| ■ Block Valve   | — Non-Constructed Pipeline      | — Highway       | □ 1mile Study Area        | ▨ National Grasslands | □ Township/Range Boundary |
| ● Wetlands      | — Constructed Pipeline          | — Roads         | □ Raptor Survey Area      | ▨ Woody Vegetation    |                           |
| ● Noxious Weeds |                                 |                 |                           |                       |                           |



**Figure 1.A**  
**T. 150N, R. 95W and T. 150N, R. 96W**  
**McKenzie County, North Dakota**



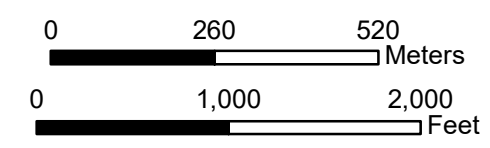


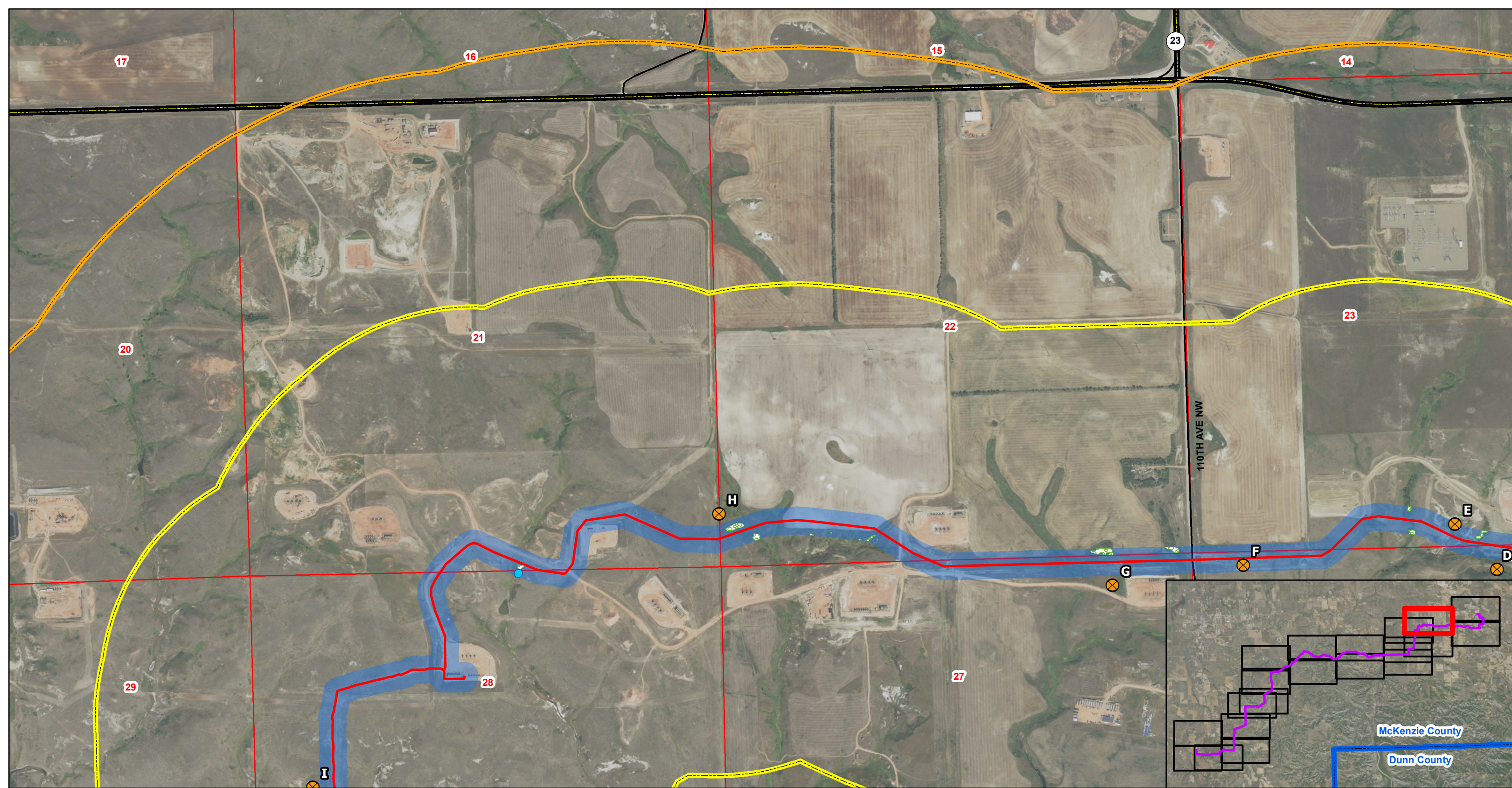
### Johnson's Corner to Wilson Station

- |                 |                                 |                 |                           |                       |                           |
|-----------------|---------------------------------|-----------------|---------------------------|-----------------------|---------------------------|
| ★ Facility      | ⊗ Potential Area of Instability | — Named Streams | ■ 300ft Pipeline Corridor | ▨ ND Trust Lands      | ▭ Section Boundary        |
| ■ Block Valve   | — Non-Constructed Pipeline      | — Highway       | ▭ 1mile Study Area        | ▨ National Grasslands | ▭ Township/Range Boundary |
| ● Wetlands      | — Constructed Pipeline          | — Roads         | ▭ Raptor Survey Area      | ▨ Woody Vegetation    |                           |
| ● Noxious Weeds |                                 |                 |                           |                       |                           |



**Figure 1.A**  
**T. 150N, R 95W and T. 150N, R. 96W**  
**McKenzie County, North Dakota**



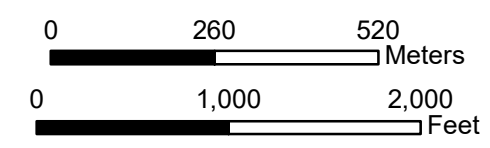


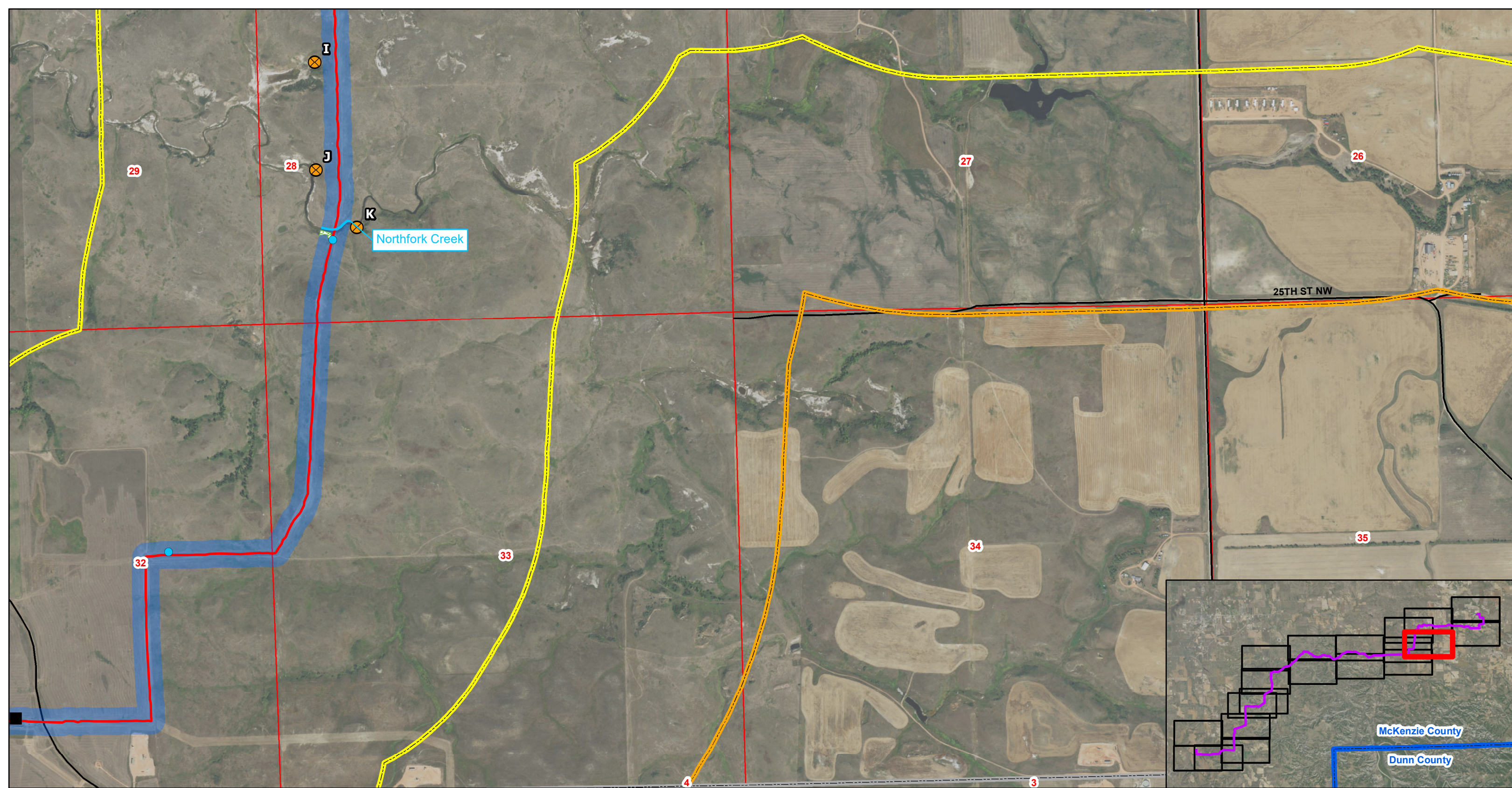
### Johnson's Corner to Wilson Station

- |                 |                                 |                 |                           |                       |                           |
|-----------------|---------------------------------|-----------------|---------------------------|-----------------------|---------------------------|
| ★ Facility      | ⊗ Potential Area of Instability | — Named Streams | ■ 300ft Pipeline Corridor | ▨ ND Trust Lands      | ▭ Section Boundary        |
| ■ Block Valve   | — Non-Constructed Pipeline      | — Highway       | ▭ 1mile Study Area        | ▨ National Grasslands | ▭ Township/Range Boundary |
| ● Wetlands      | — Constructed Pipeline          | — Roads         | ▭ Raptor Survey Area      | ▨ Woody Vegetation    |                           |
| ● Noxious Weeds |                                 |                 |                           |                       |                           |



Figure 1.A  
T. 150N, R. 96W  
McKenzie County, North Dakota



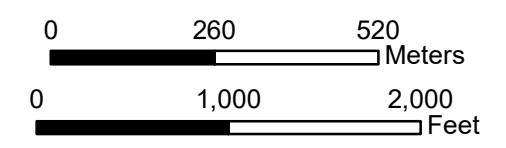


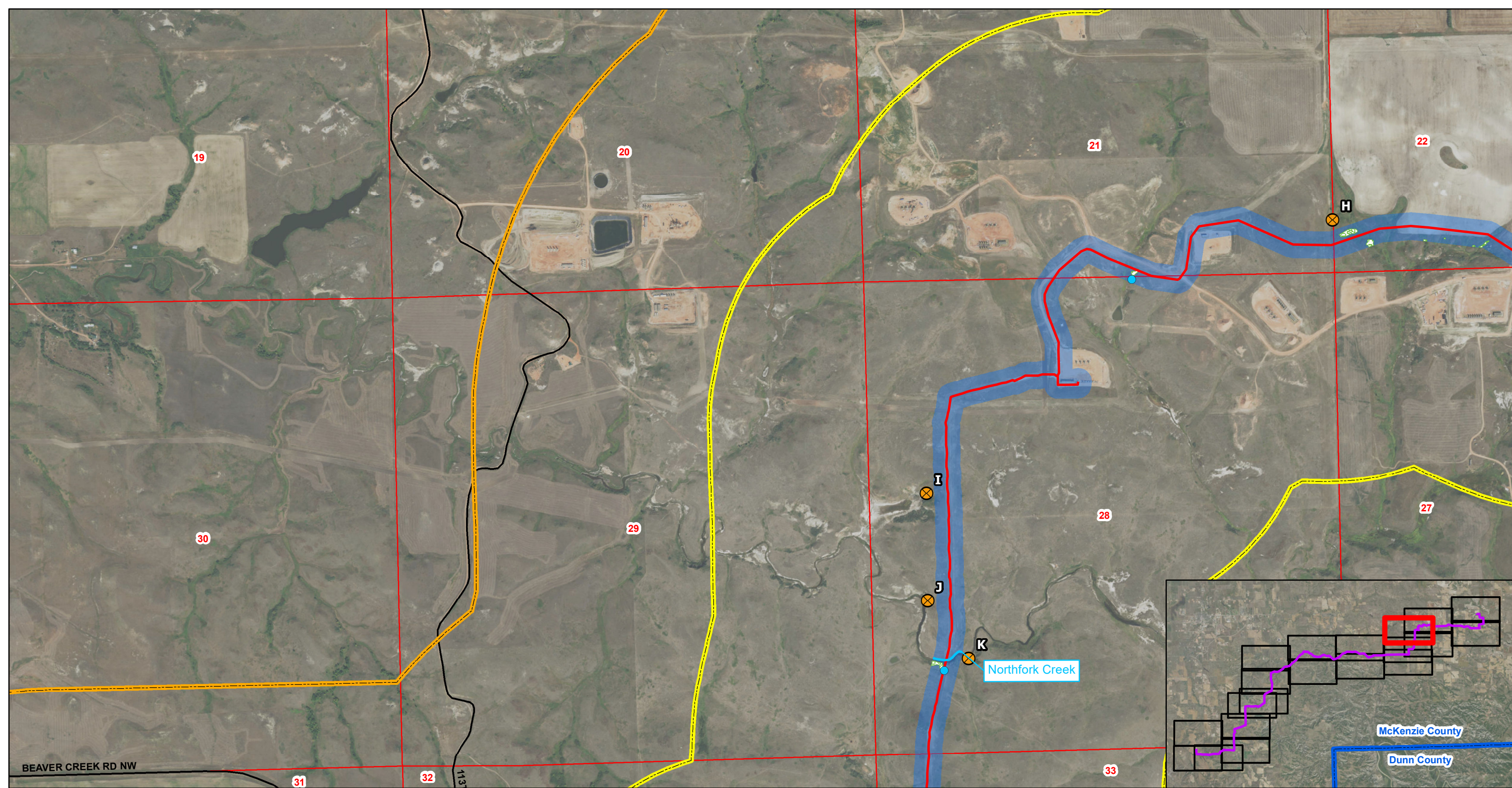
### Johnson's Corner to Wilson Station

- |                 |                                 |                 |                           |                       |                           |
|-----------------|---------------------------------|-----------------|---------------------------|-----------------------|---------------------------|
| ★ Facility      | ⊗ Potential Area of Instability | — Named Streams | ■ 300ft Pipeline Corridor | ▨ ND Trust Lands      | □ Section Boundary        |
| ■ Block Valve   | — Non-Constructed Pipeline      | — Highway       | □ 1mile Study Area        | ▨ National Grasslands | □ Township/Range Boundary |
| ● Wetlands      | — Constructed Pipeline          | — Roads         | □ Raptor Survey Area      | ▨ Woody Vegetation    |                           |
| ● Noxious Weeds |                                 |                 |                           |                       |                           |



Figure 1.A  
T. 150N, R. 96W  
McKenzie County, North Dakota



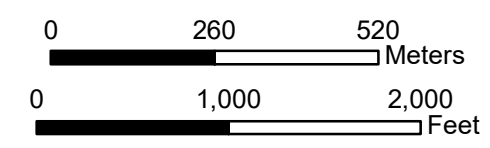


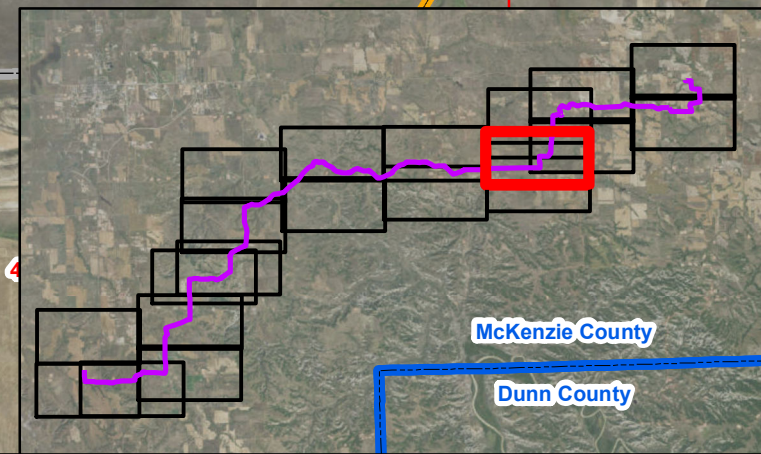
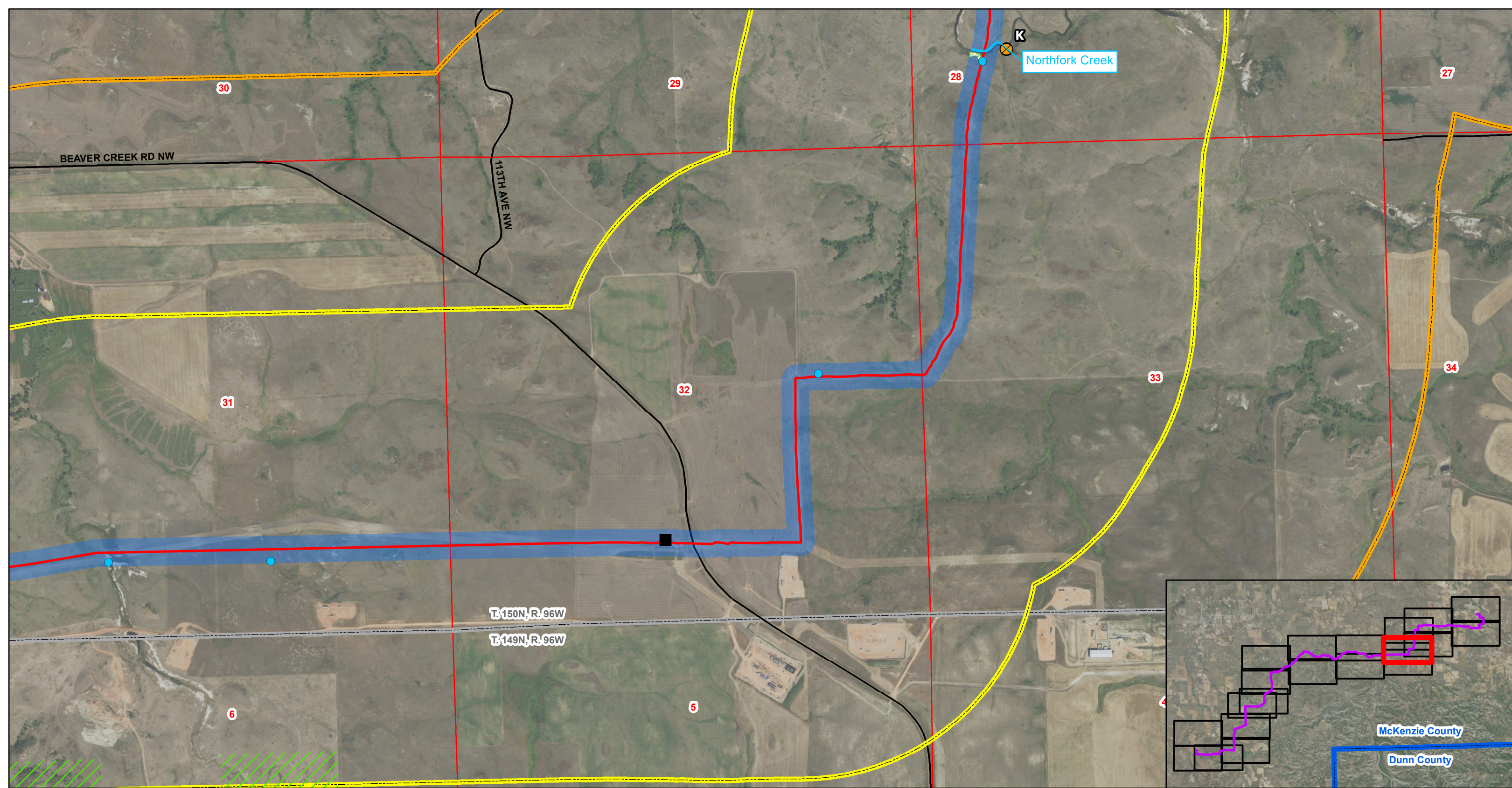
### Johnson's Corner to Wilson Station

- |                 |                                 |                 |                           |                       |                           |
|-----------------|---------------------------------|-----------------|---------------------------|-----------------------|---------------------------|
| ★ Facility      | ⊗ Potential Area of Instability | — Named Streams | ■ 300ft Pipeline Corridor | ▨ ND Trust Lands      | ▭ Section Boundary        |
| ■ Block Valve   | — Non-Constructed Pipeline      | — Highway       | ▭ 1mile Study Area        | ▨ National Grasslands | ▭ Township/Range Boundary |
| ● Wetlands      | — Constructed Pipeline          | — Roads         | ▭ Raptor Survey Area      | ▨ Woody Vegetation    |                           |
| ● Noxious Weeds |                                 |                 |                           |                       |                           |



Figure 1.A  
T. 150N, R. 96W  
McKenzie County, North Dakota



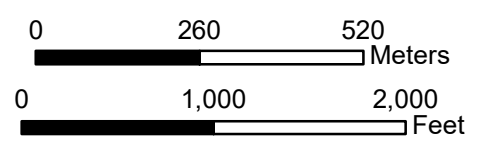


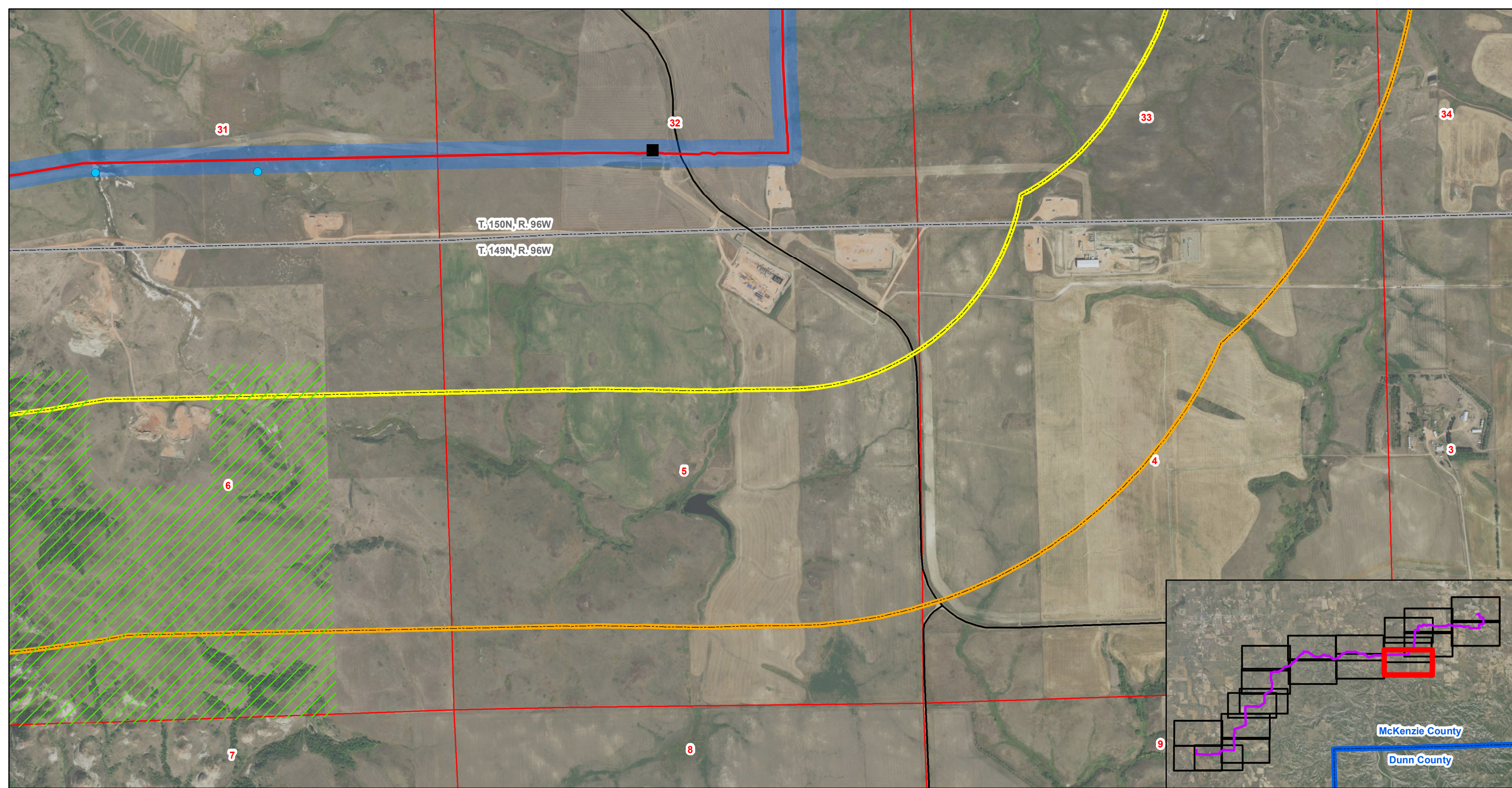
### Johnson's Corner to Wilson Station

- |                 |                                 |                 |                           |                       |                           |
|-----------------|---------------------------------|-----------------|---------------------------|-----------------------|---------------------------|
| ★ Facility      | ⊗ Potential Area of Instability | — Named Streams | ■ 300ft Pipeline Corridor | ▨ ND Trust Lands      | □ Section Boundary        |
| ■ Block Valve   | — Non-Constructed Pipeline      | — Highway       | ▭ 1mile Study Area        | ▨ National Grasslands | ▭ Township/Range Boundary |
| ● Wetlands      | — Constructed Pipeline          | — Roads         | ▭ Raptor Survey Area      | ▨ Woody Vegetation    |                           |
| ● Noxious Weeds |                                 |                 |                           |                       |                           |



**Figure 1.A**  
**T. 150N, R. 96W and T. 149N, R. 96W**  
**McKenzie County, North Dakota**



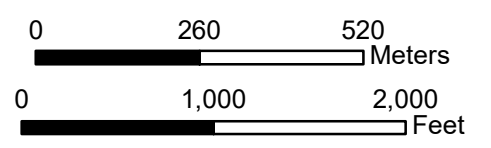


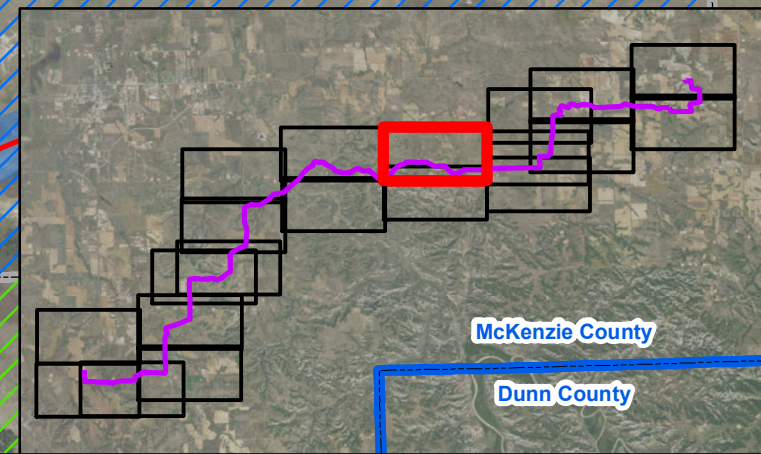
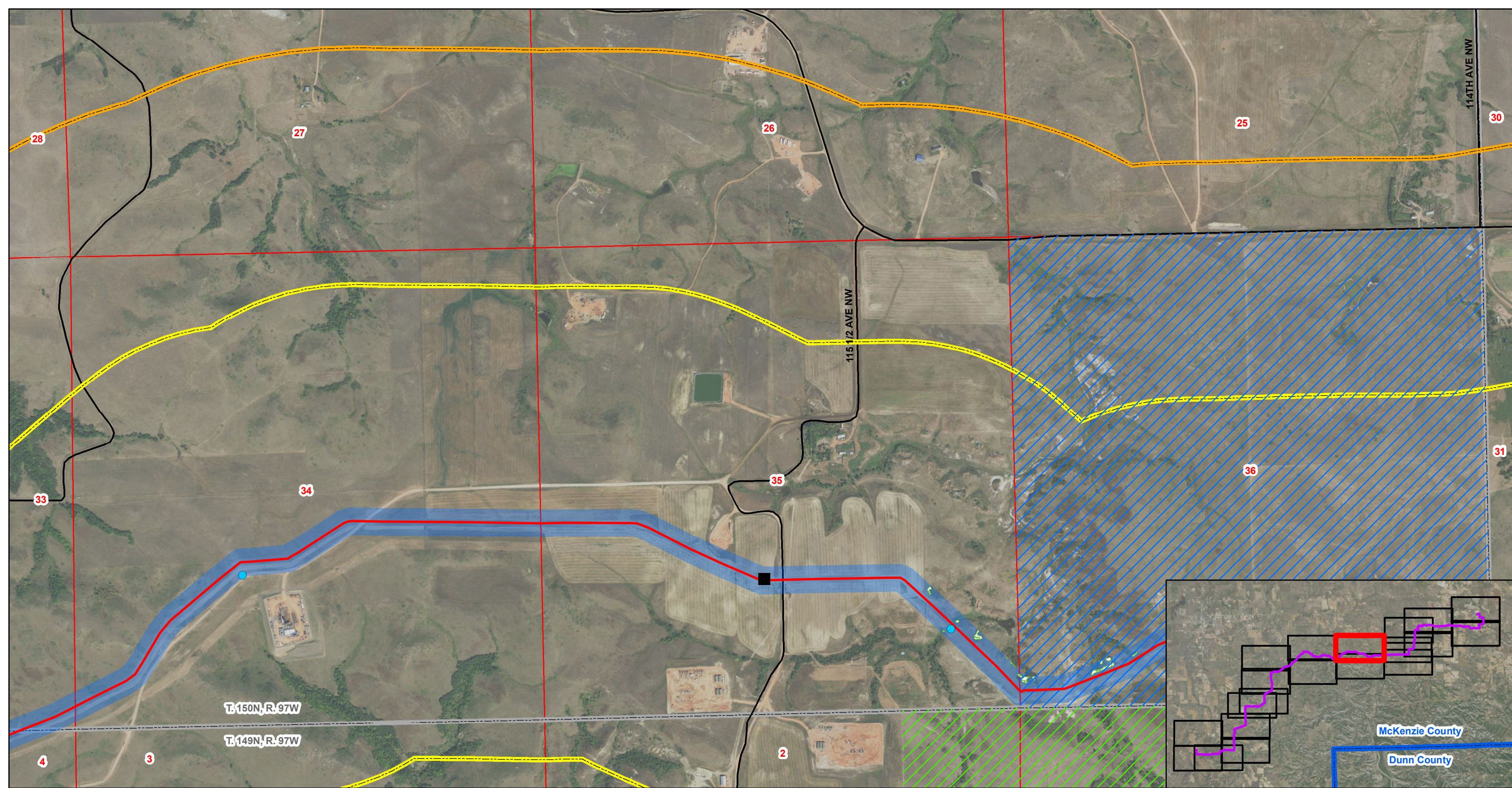
### Johnson's Corner to Wilson Station

- |                 |                                 |                 |                           |                       |                           |
|-----------------|---------------------------------|-----------------|---------------------------|-----------------------|---------------------------|
| ★ Facility      | ⊗ Potential Area of Instability | — Named Streams | ■ 300ft Pipeline Corridor | ▨ ND Trust Lands      | □ Section Boundary        |
| ■ Block Valve   | — Non-Constructed Pipeline      | — Highway       | ▭ 1mile Study Area        | ▨ National Grasslands | ▭ Township/Range Boundary |
| ● Wetlands      | — Constructed Pipeline          | — Roads         | ▭ Raptor Survey Area      | ▨ Woody Vegetation    |                           |
| ● Noxious Weeds |                                 |                 |                           |                       |                           |



**Figure 1.A**  
**T. 150N, R. 96W and T. 149N, R. 96W**  
**McKenzie County, North Dakota**



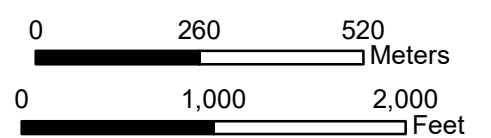


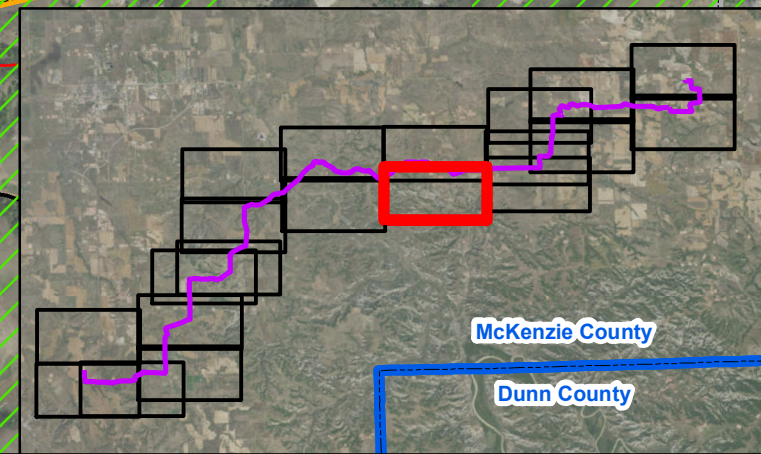
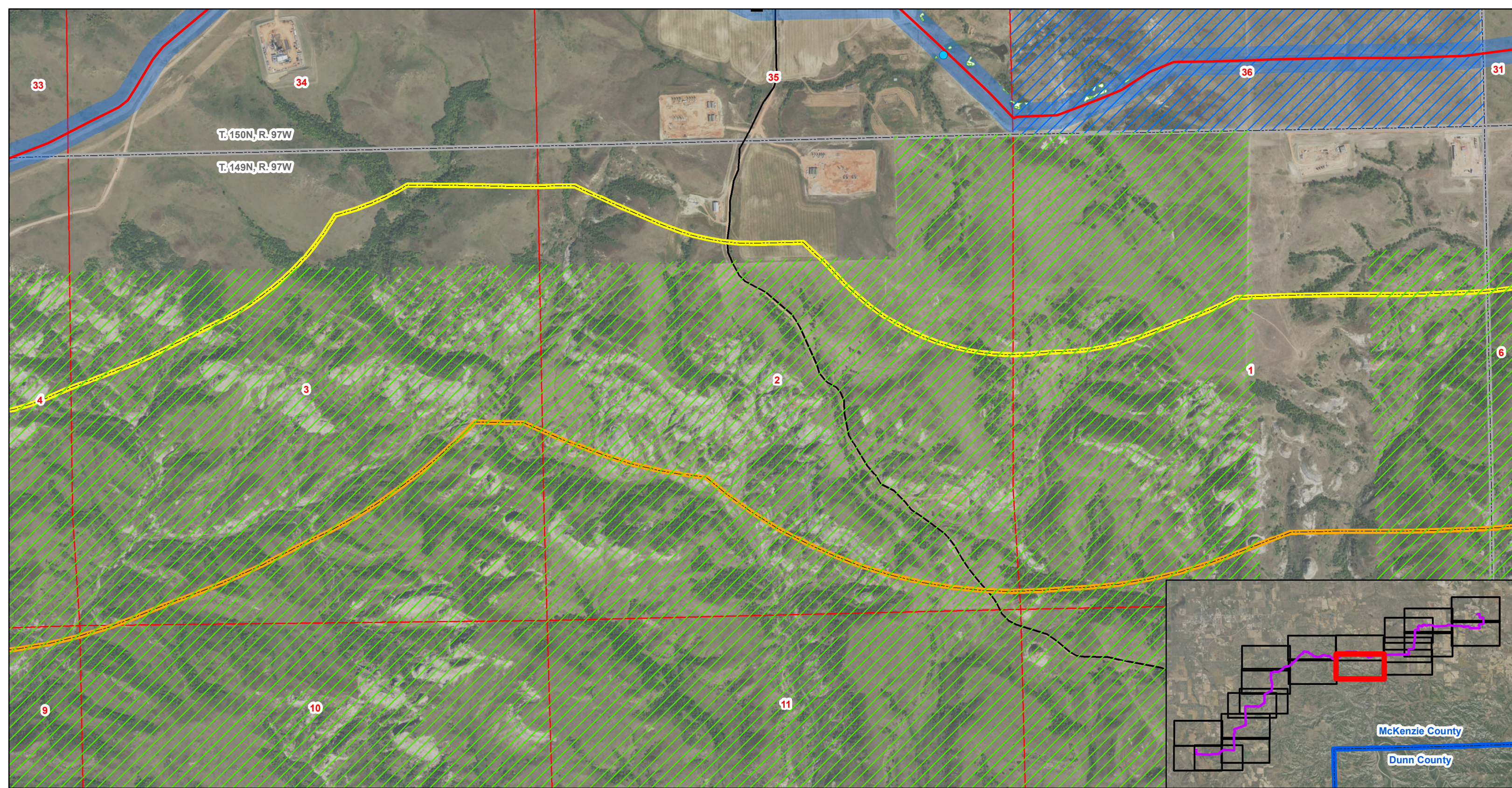
### Johnson's Corner to Wilson Station

- |                 |                                 |                 |                           |                       |                           |
|-----------------|---------------------------------|-----------------|---------------------------|-----------------------|---------------------------|
| ★ Facility      | ⊗ Potential Area of Instability | — Named Streams | ■ 300ft Pipeline Corridor | ▨ ND Trust Lands      | □ Section Boundary        |
| ■ Block Valve   | — Non-Constructed Pipeline      | — Highway       | ▭ 1mile Study Area        | ▨ National Grasslands | ▭ Township/Range Boundary |
| ● Wetlands      | — Constructed Pipeline          | — Roads         | ▭ Raptor Survey Area      | ▨ Woody Vegetation    |                           |
| ● Noxious Weeds |                                 |                 |                           |                       |                           |



**Figure 1.A**  
**T. 150N, R. 96W, T. 149N, R. 96W, T. 150N, R. 97W,**  
**and T. 149N, R. 97W**  
**McKenzie County, North Dakota**  
**Page 8 of 20**



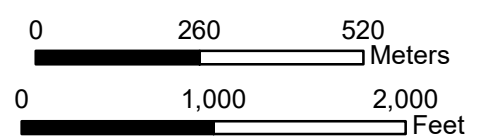


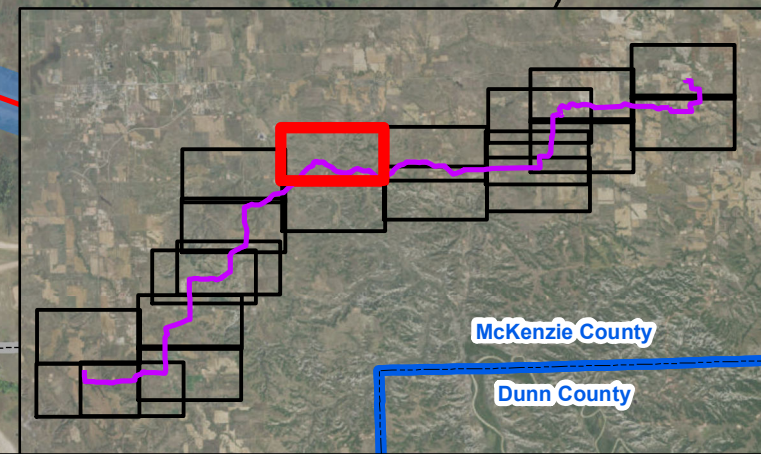
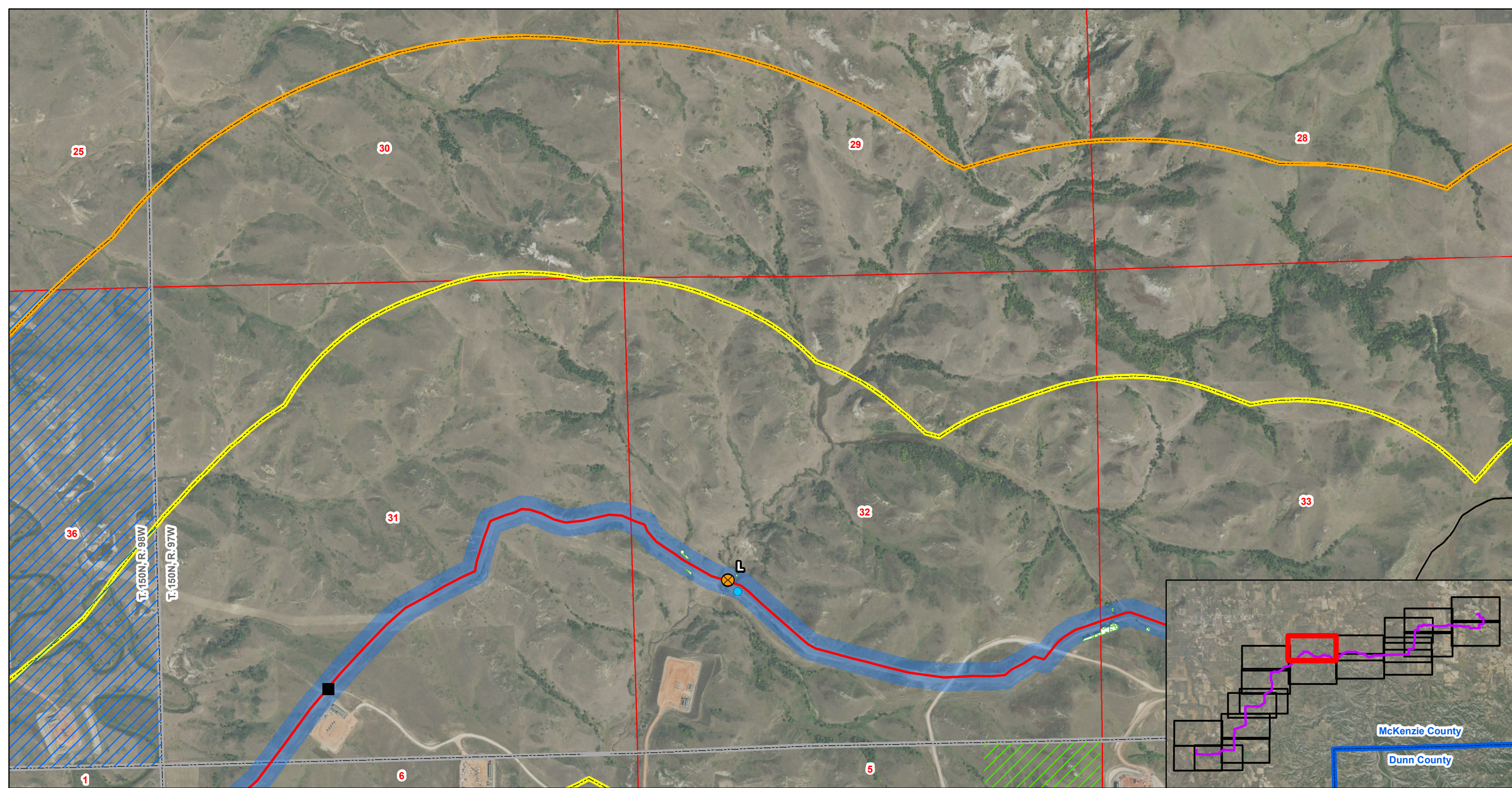
### Johnson's Corner to Wilson Station

- |                 |                                 |                 |                           |                       |                           |
|-----------------|---------------------------------|-----------------|---------------------------|-----------------------|---------------------------|
| ★ Facility      | ⊗ Potential Area of Instability | — Named Streams | ▭ 300ft Pipeline Corridor | ▨ ND Trust Lands      | ▭ Section Boundary        |
| ■ Block Valve   | — Non-Constructed Pipeline      | — Highway       | ▭ 1mile Study Area        | ▨ National Grasslands | ▭ Township/Range Boundary |
| ● Wetlands      | — Constructed Pipeline          | — Roads         | ▭ Raptor Survey Area      | ▨ Woody Vegetation    |                           |
| ● Noxious Weeds |                                 |                 |                           |                       |                           |



**Figure 1.A**  
**T. 150N, R. 96W, T. 149N, R. 96W, T. 150N, R. 97W,**  
**and T. 149N, R. 97W**  
**McKenzie County, North Dakota**  
**Page 9 of 20**



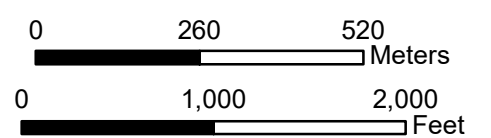


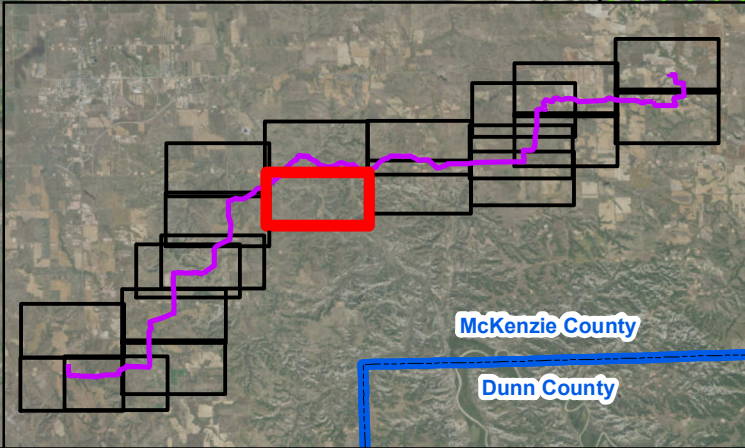
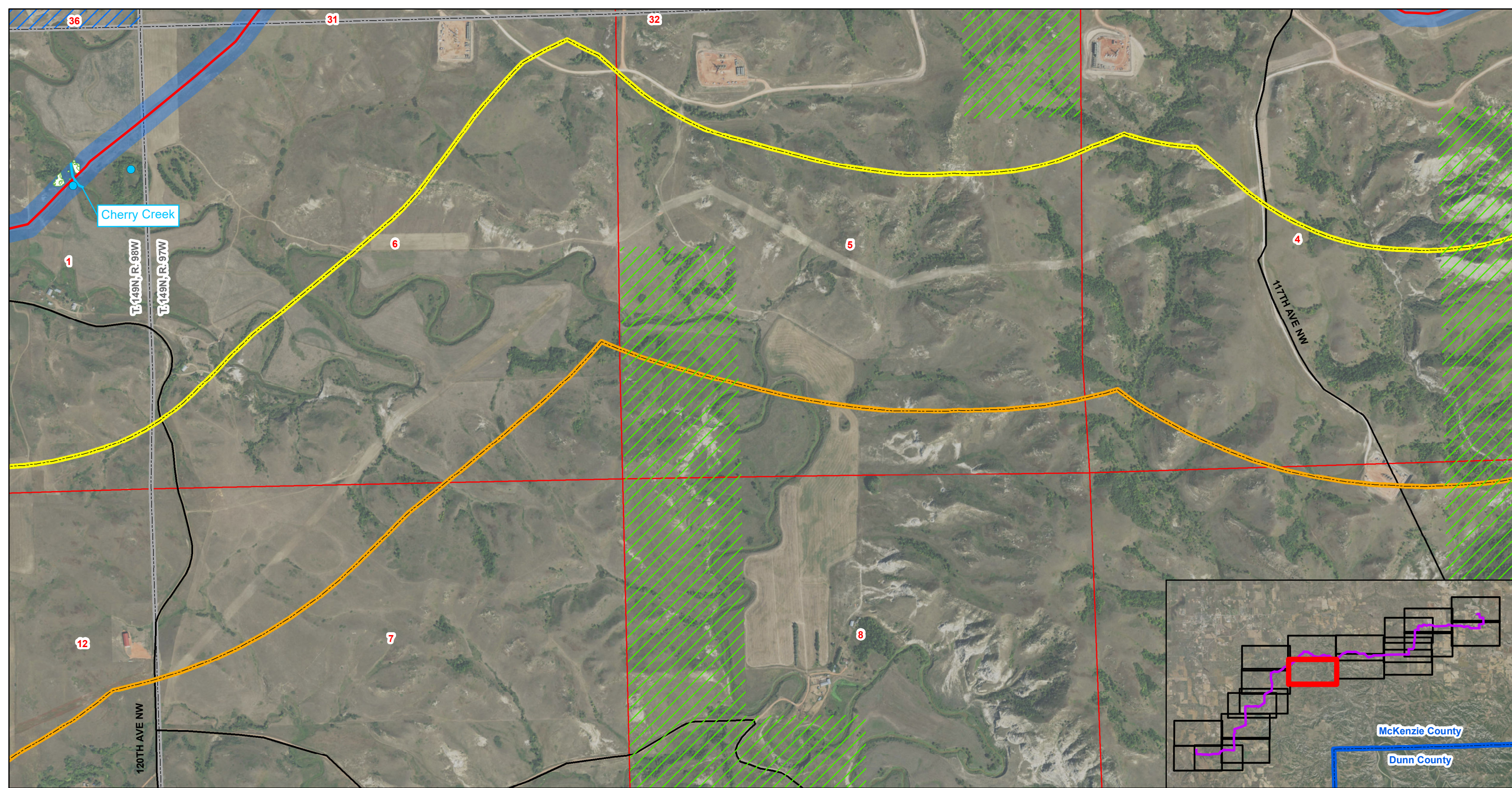
### Johnson's Corner to Wilson Station

- |                 |                                 |                 |                           |                       |                           |
|-----------------|---------------------------------|-----------------|---------------------------|-----------------------|---------------------------|
| ★ Facility      | ⊗ Potential Area of Instability | — Named Streams | ▭ 300ft Pipeline Corridor | ▨ ND Trust Lands      | ▭ Section Boundary        |
| ■ Block Valve   | — Non-Constructed Pipeline      | — Highway       | ▭ 1mile Study Area        | ▨ National Grasslands | ▭ Township/Range Boundary |
| ● Wetlands      | — Constructed Pipeline          | — Roads         | ▭ Raptor Survey Area      | ▨ Woody Vegetation    |                           |
| ● Noxious Weeds |                                 |                 |                           |                       |                           |



**Figure 1.A**  
**T. 150N, R. 97W, T. 149N, R. 97W, T. 150N, R. 98W,**  
**and T. 149N, R. 98W**  
**McKenzie County, North Dakota**  
**Page 10 of 20**



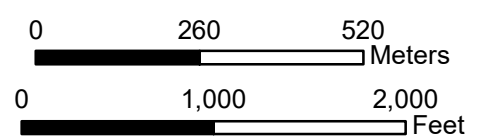


### Johnson's Corner to Wilson Station

- |                 |                                 |                 |                           |                       |                           |
|-----------------|---------------------------------|-----------------|---------------------------|-----------------------|---------------------------|
| ★ Facility      | ⊗ Potential Area of Instability | — Named Streams | ■ 300ft Pipeline Corridor | ▨ ND Trust Lands      | ▭ Section Boundary        |
| ■ Block Valve   | — Non-Constructed Pipeline      | — Highway       | ▭ 1mile Study Area        | ▨ National Grasslands | ▭ Township/Range Boundary |
| ● Wetlands      | — Constructed Pipeline          | — Roads         | ▭ Raptor Survey Area      | ▨ Woody Vegetation    |                           |
| ● Noxious Weeds |                                 |                 |                           |                       |                           |



**Figure 1.A**  
**T. 150N, R. 97W, T. 149N, R. 97W, T. 150N, R. 98W,**  
**and T. 149N, R. 98W**  
**McKenzie County, North Dakota**  
**Page 11 of 20**



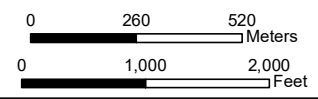


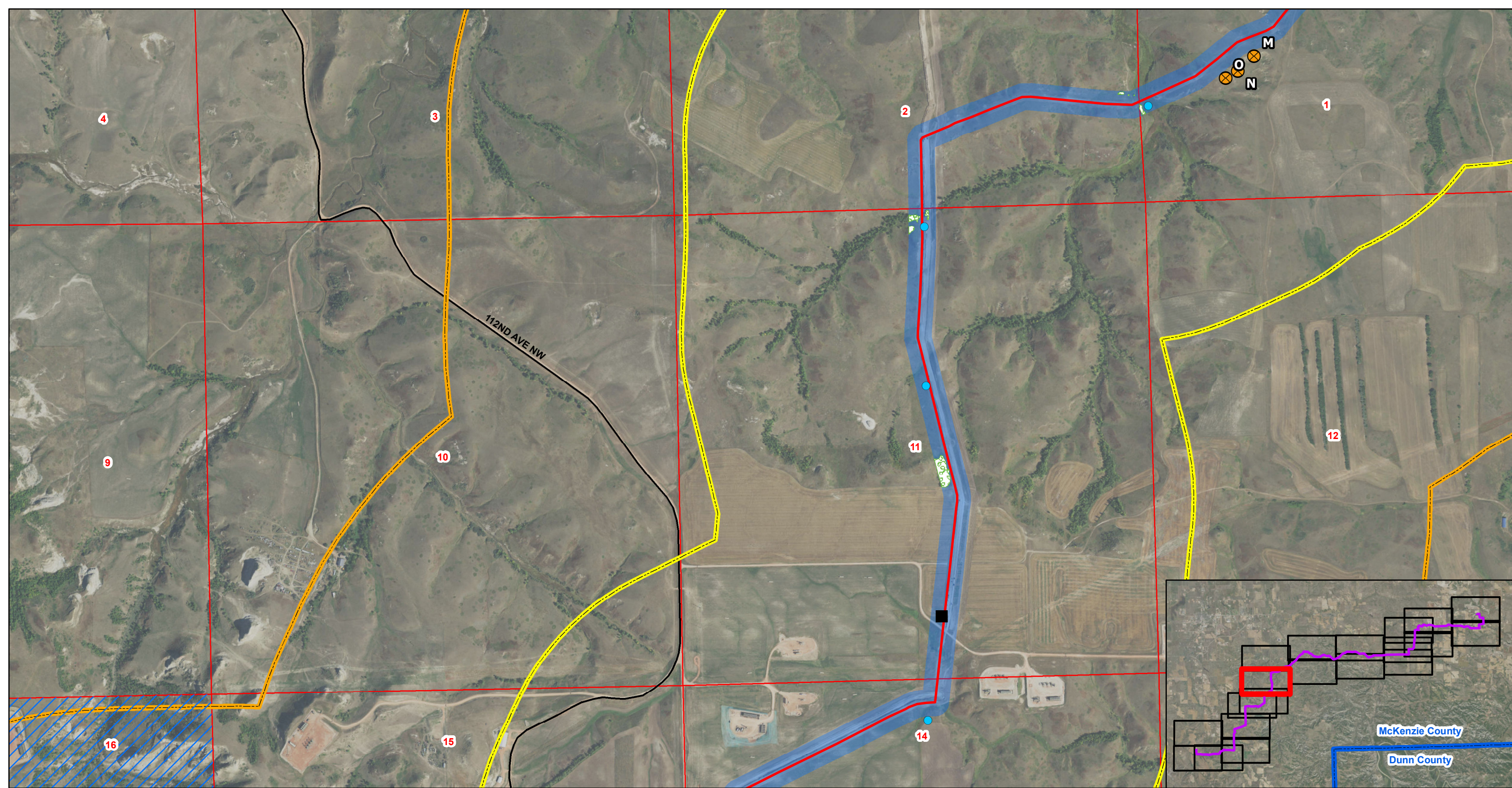
**Johnson's Corner to Wilson Station**

- |                 |                                 |                 |                           |                       |                           |
|-----------------|---------------------------------|-----------------|---------------------------|-----------------------|---------------------------|
| ★ Facility      | ⊗ Potential Area of Instability | — Named Streams | ▭ 300ft Pipeline Corridor | ▨ ND Trust Lands      | ▭ Section Boundary        |
| ■ Block Valve   | — Non-Constructed Pipeline      | — Highway       | ▭ 1mile Study Area        | ▨ National Grasslands | ▭ Township/Range Boundary |
| ● Wetlands      | — Constructed Pipeline          | — Roads         | ▭ Raptor Survey Area      | ▨ Woody Vegetation    |                           |
| ● Noxious Weeds |                                 |                 |                           |                       |                           |



**Figure 1.A**  
**T. 150N, R. 98W and T. 149N, R. 98W**  
**McKenzie County, North Dakota**



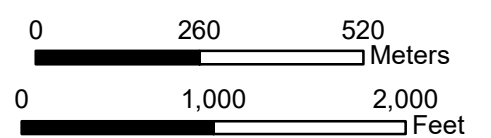


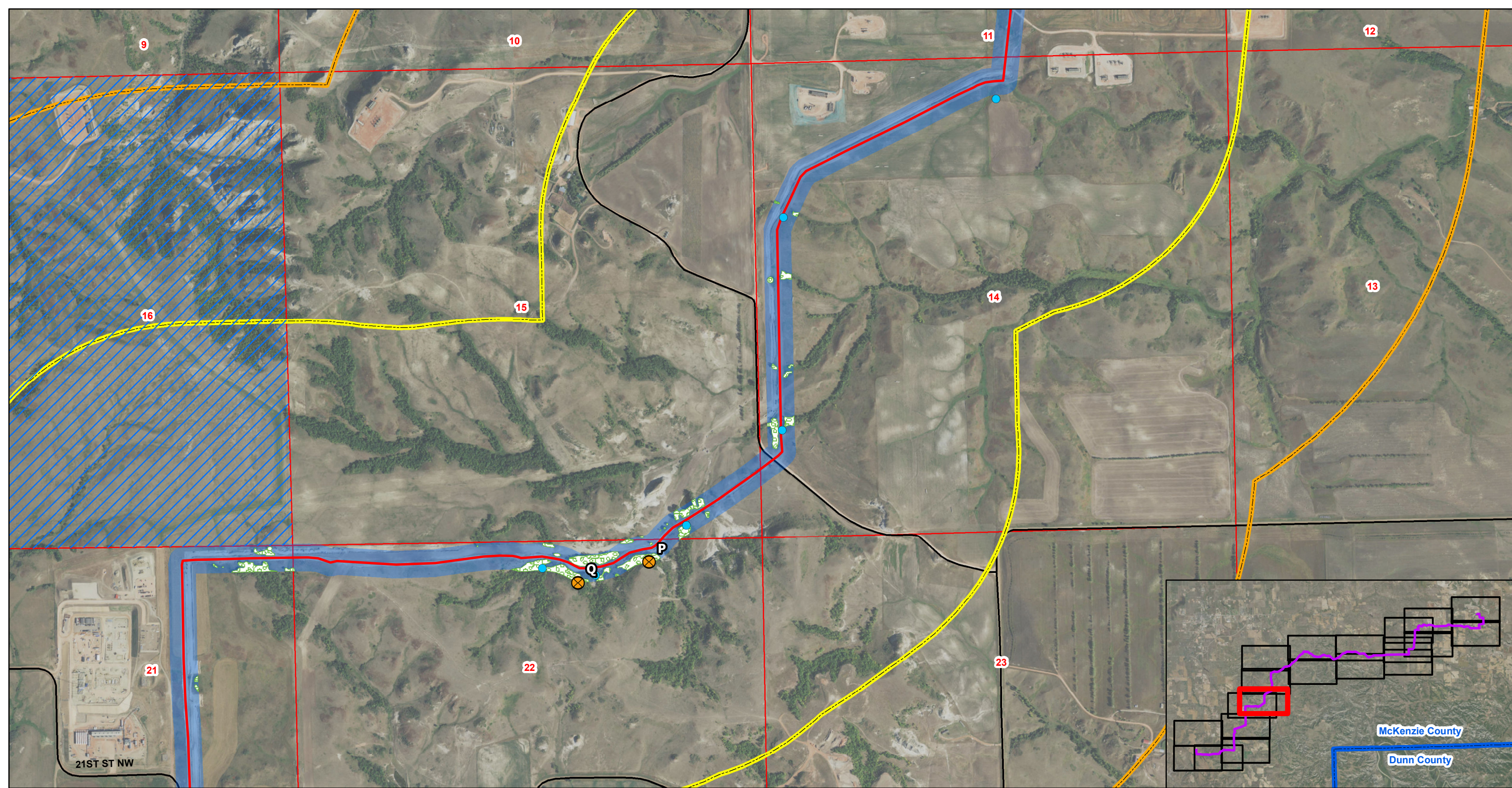
### Johnson's Corner to Wilson Station

- |                 |                                 |                 |                           |                       |                           |
|-----------------|---------------------------------|-----------------|---------------------------|-----------------------|---------------------------|
| ★ Facility      | ⊗ Potential Area of Instability | — Named Streams | ■ 300ft Pipeline Corridor | ▨ ND Trust Lands      | ▭ Section Boundary        |
| ■ Block Valve   | — Non-Constructed Pipeline      | — Highway       | ▭ 1mile Study Area        | ▨ National Grasslands | ▭ Township/Range Boundary |
| ● Wetlands      | — Constructed Pipeline          | — Roads         | ▭ Raptor Survey Area      | ▨ Woody Vegetation    |                           |
| ● Noxious Weeds |                                 |                 |                           |                       |                           |



Figure 1.A  
T. 149N, R. 98W  
McKenzie County, North Dakota



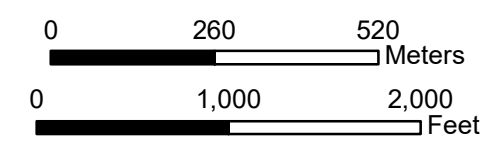


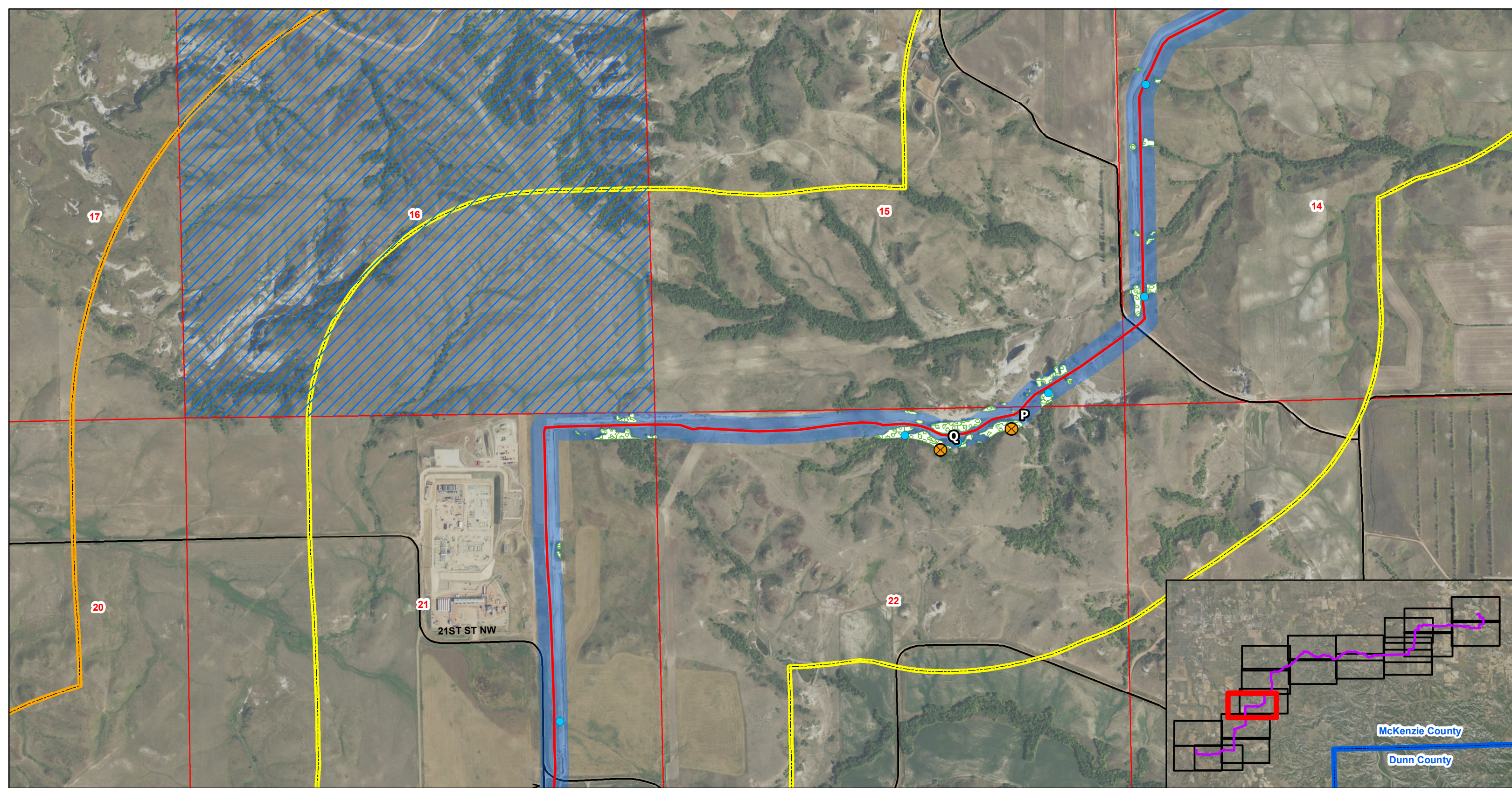
### Johnson's Corner to Wilson Station

- |                 |                                 |                 |                           |                       |                           |
|-----------------|---------------------------------|-----------------|---------------------------|-----------------------|---------------------------|
| ★ Facility      | ⊗ Potential Area of Instability | — Named Streams | ■ 300ft Pipeline Corridor | ▨ ND Trust Lands      | ▭ Section Boundary        |
| ■ Block Valve   | — Non-Constructed Pipeline      | — Highway       | ▭ 1mile Study Area        | ▨ National Grasslands | ▭ Township/Range Boundary |
| ● Wetlands      | — Constructed Pipeline          | — Roads         | ▭ Raptor Survey Area      | ▨ Woody Vegetation    |                           |
| ● Noxious Weeds |                                 |                 |                           |                       |                           |



Figure 1.A  
T. 149N, R. 98W  
McKenzie County, North Dakota



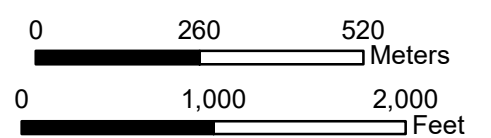


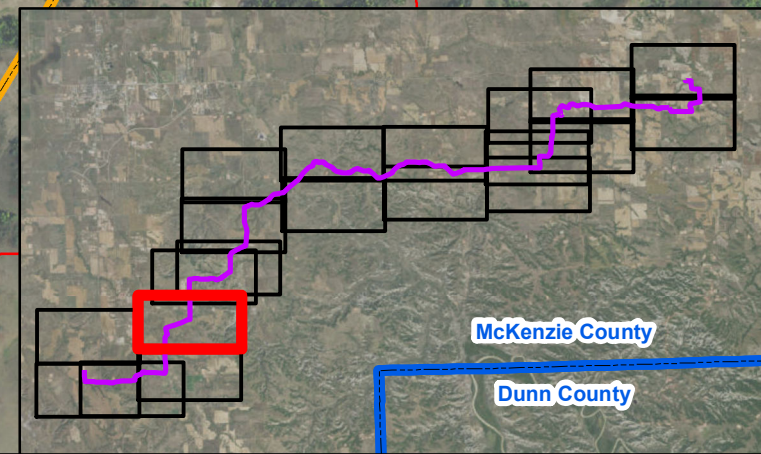
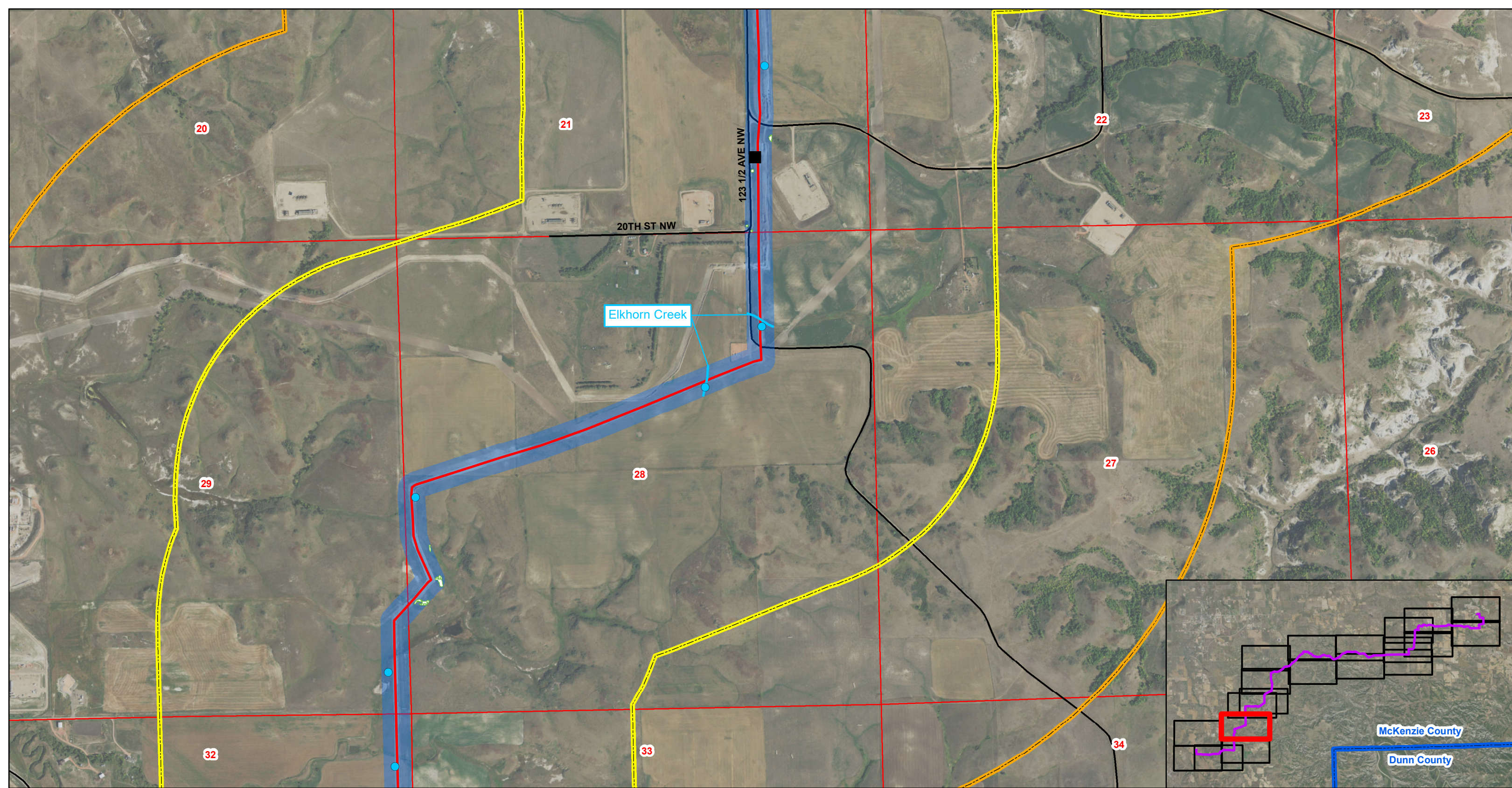
### Johnson's Corner to Wilson Station

- |                 |                                 |                 |                           |                       |                           |
|-----------------|---------------------------------|-----------------|---------------------------|-----------------------|---------------------------|
| ★ Facility      | ⊗ Potential Area of Instability | — Named Streams | ■ 300ft Pipeline Corridor | ▨ ND Trust Lands      | ▭ Section Boundary        |
| ■ Block Valve   | — Non-Constructed Pipeline      | — Highway       | ▭ 1mile Study Area        | ▨ National Grasslands | ▭ Township/Range Boundary |
| ● Wetlands      | — Constructed Pipeline          | — Roads         | ▭ Raptor Survey Area      | ▨ Woody Vegetation    |                           |
| ● Noxious Weeds |                                 |                 |                           |                       |                           |



Figure 1.A  
T. 149N, R. 98W  
McKenzie County, North Dakota



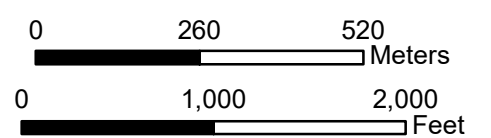


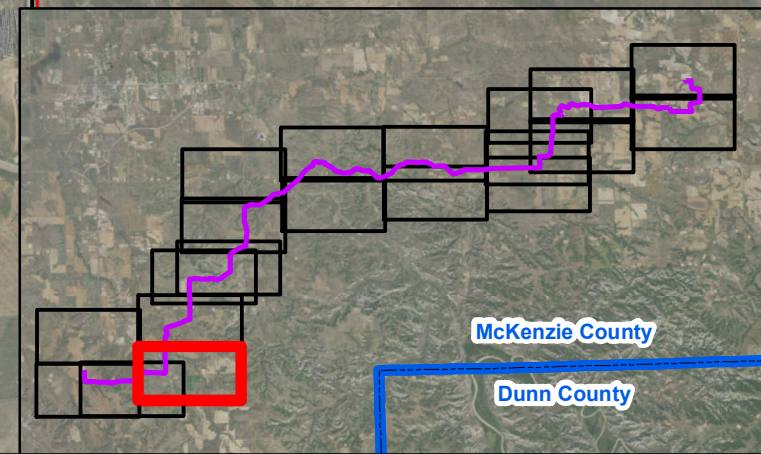
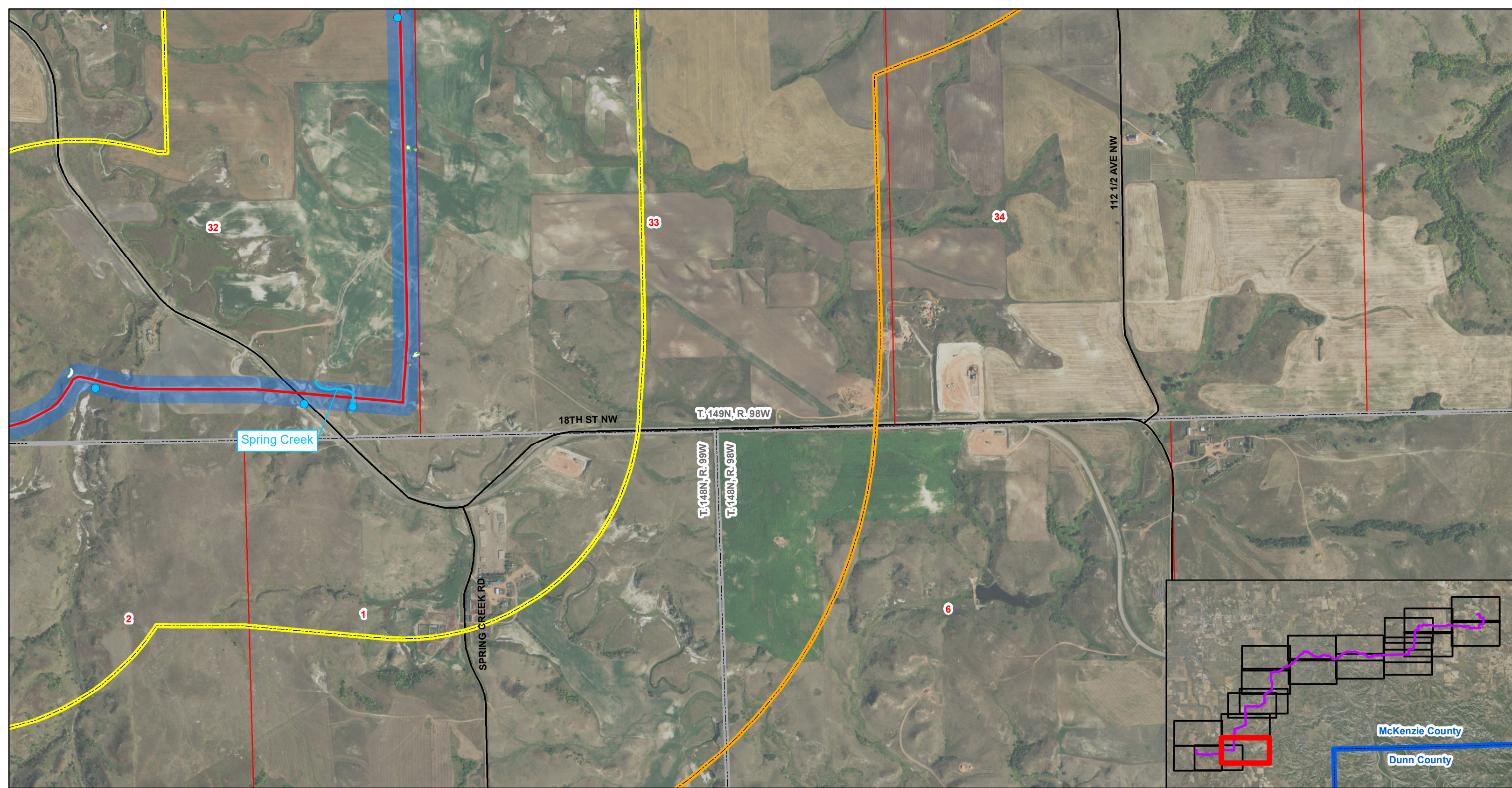
### Johnson's Corner to Wilson Station

- |                 |                                 |                 |                           |                       |                           |
|-----------------|---------------------------------|-----------------|---------------------------|-----------------------|---------------------------|
| ★ Facility      | ⊗ Potential Area of Instability | — Named Streams | ■ 300ft Pipeline Corridor | ▨ ND Trust Lands      | ▭ Section Boundary        |
| ■ Block Valve   | — Non-Constructed Pipeline      | — Highway       | ▭ 1mile Study Area        | ▨ National Grasslands | ▭ Township/Range Boundary |
| ● Wetlands      | — Constructed Pipeline          | — Roads         | ▭ Raptor Survey Area      | ▨ Woody Vegetation    |                           |
| ● Noxious Weeds |                                 |                 |                           |                       |                           |



Figure 1.A  
T. 149N, R. 98W  
McKenzie County, North Dakota



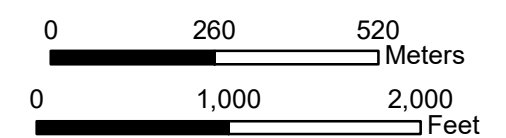


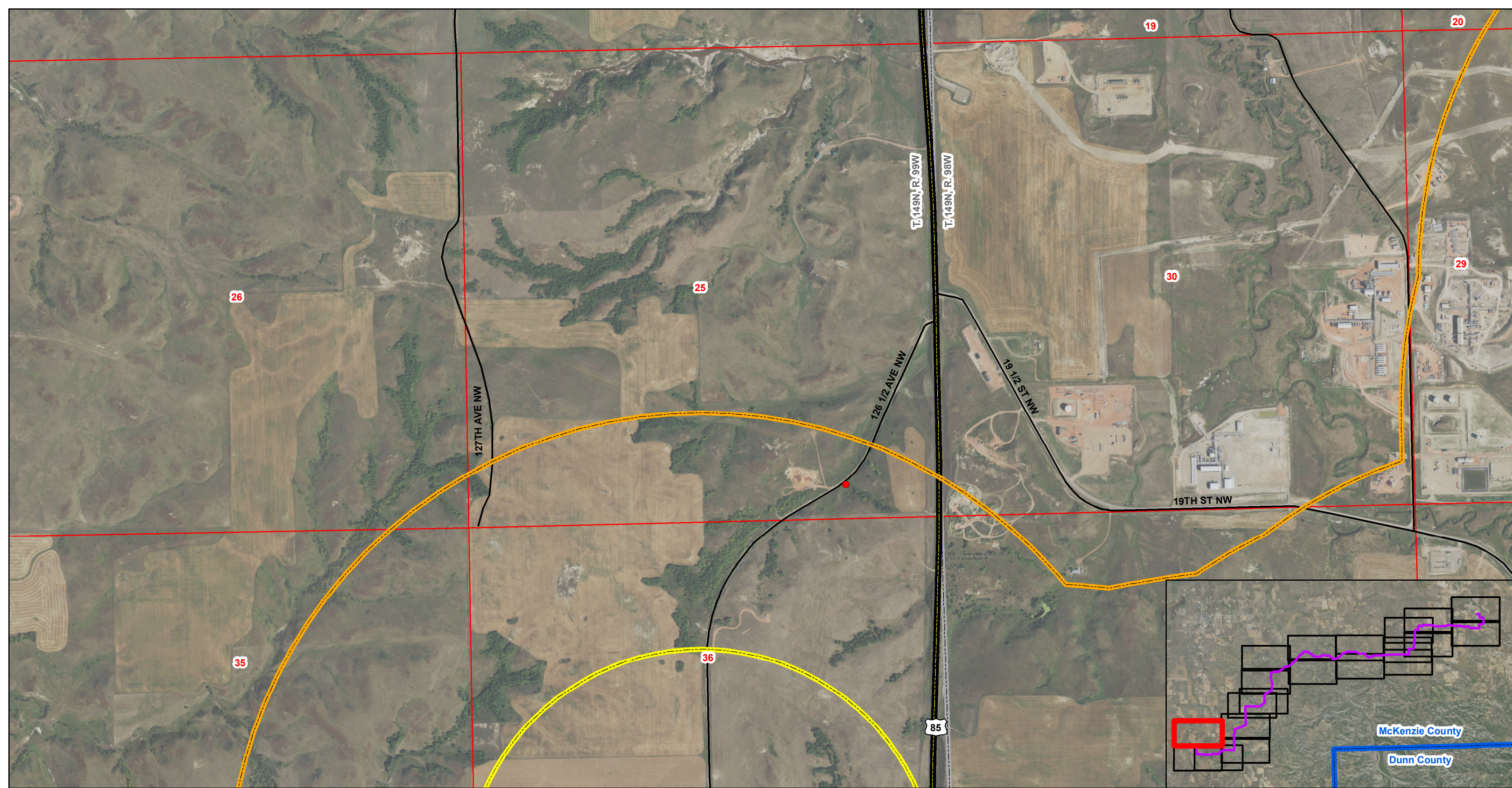
### Johnson's Corner to Wilson Station

- |                 |                                 |                 |                           |                       |                           |
|-----------------|---------------------------------|-----------------|---------------------------|-----------------------|---------------------------|
| ★ Facility      | ⊗ Potential Area of Instability | — Named Streams | ■ 300ft Pipeline Corridor | ▨ ND Trust Lands      | ▭ Section Boundary        |
| ■ Block Valve   | — Non-Constructed Pipeline      | — Highway       | ▭ 1mile Study Area        | ▨ National Grasslands | ▭ Township/Range Boundary |
| ● Wetlands      | — Constructed Pipeline          | — Roads         | ▭ Raptor Survey Area      | ▨ Woody Vegetation    |                           |
| ● Noxious Weeds |                                 |                 |                           |                       |                           |



**Figure 1.A**  
**T. 149N, R. 98W, T. 148N, R. 98W,**  
**and T. 148N, R. 99W**  
**McKenzie County, North Dakota**  
**Page 17 of 20**



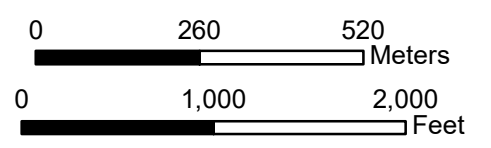


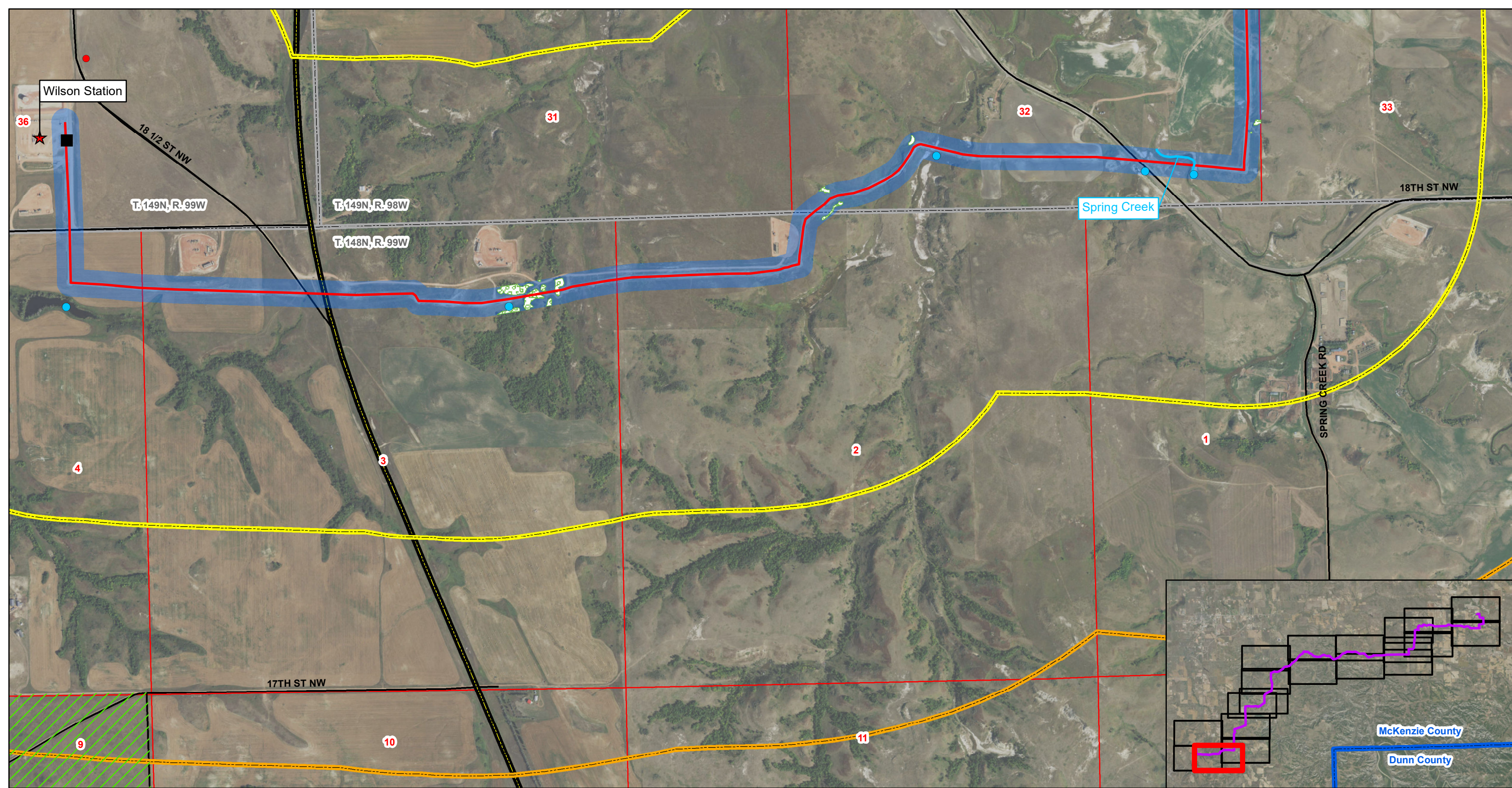
### Johnson's Corner to Wilson Station

- |                 |                                 |                 |                           |                       |                           |
|-----------------|---------------------------------|-----------------|---------------------------|-----------------------|---------------------------|
| ★ Facility      | ⊗ Potential Area of Instability | — Named Streams | ■ 300ft Pipeline Corridor | ▨ ND Trust Lands      | □ Section Boundary        |
| ■ Block Valve   | — Non-Constructed Pipeline      | — Highway       | □ 1mile Study Area        | ▨ National Grasslands | □ Township/Range Boundary |
| ● Wetlands      | — Constructed Pipeline          | — Roads         | □ Raptor Survey Area      | ▨ Woody Vegetation    |                           |
| ● Noxious Weeds |                                 |                 |                           |                       |                           |



**Figure 1.A**  
**T. 149N, R. 98W and T. 149N, R. 99W**  
**McKenzie County, North Dakota**



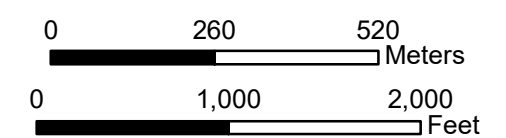


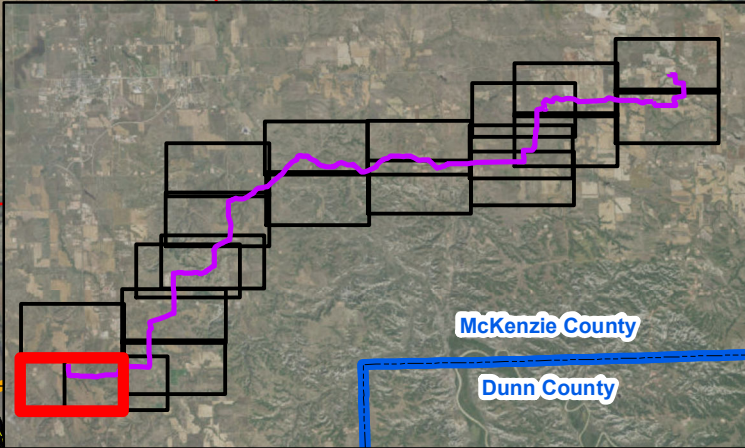
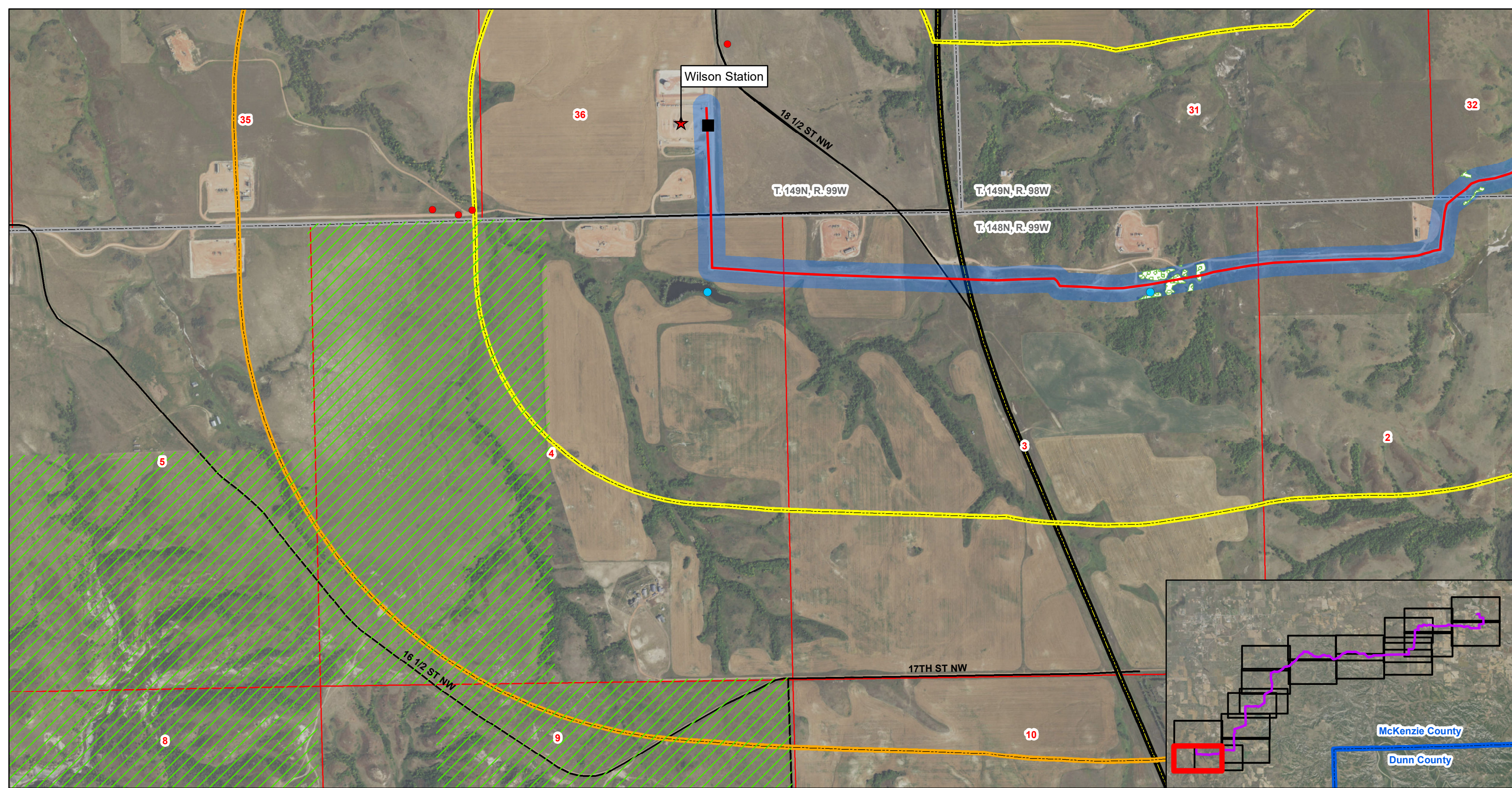
### Johnson's Corner to Wilson Station

- |                 |                                 |                 |                           |                       |                           |
|-----------------|---------------------------------|-----------------|---------------------------|-----------------------|---------------------------|
| ★ Facility      | ⊗ Potential Area of Instability | — Named Streams | ■ 300ft Pipeline Corridor | ▨ ND Trust Lands      | □ Section Boundary        |
| ■ Block Valve   | — Non-Constructed Pipeline      | — Highway       | ▭ 1mile Study Area        | ▨ National Grasslands | ▭ Township/Range Boundary |
| ● Wetlands      | — Constructed Pipeline          | — Roads         | ▭ Raptor Survey Area      | ▨ Woody Vegetation    |                           |
| ● Noxious Weeds |                                 |                 |                           |                       |                           |



**Figure 1.A**  
**T. 149N, R. 98W, T. 149N, R. 99W,**  
**and T. 148N, R. 99W**  
**McKenzie County, North Dakota**  
**Page 19 of 20**





### Johnson's Corner to Wilson Station

- |                 |                                 |                 |                           |                       |                           |
|-----------------|---------------------------------|-----------------|---------------------------|-----------------------|---------------------------|
| ★ Facility      | ⊗ Potential Area of Instability | — Named Streams | ▭ 300ft Pipeline Corridor | ▨ ND Trust Lands      | ▭ Section Boundary        |
| ■ Block Valve   | — Non-Constructed Pipeline      | — Highway       | ▭ 1mile Study Area        | ▨ National Grasslands | ▭ Township/Range Boundary |
| ● Wetlands      | — Constructed Pipeline          | — Roads         | ▭ Raptor Survey Area      | ▨ Woody Vegetation    |                           |
| ● Noxious Weeds |                                 |                 |                           |                       |                           |



Figure 1.A  
 T. 149N, R. 98W, T. 149N, R. 99W,  
 and T. 148N, R. 99W  
 McKenzie County, North Dakota  
 Page 20 of 20

0 260 520 Meters  
 0 1,000 2,000 Feet