

March 17, 2021

Via Electronic Mail & Hand Delivery

Mr. Steve Kahl
Executive Director
North Dakota Public Service Commission
600 E. Boulevard, Dept. 408
Bismarck, ND 58505-0480
ndpsc@nd.gov

**In re: Bridger Pipeline LLC
Johnson's Corner to Wilson Pipeline Project
Case No. PU-20-430
Our File No. 016265-000017**

Dear Mr. Kahl:

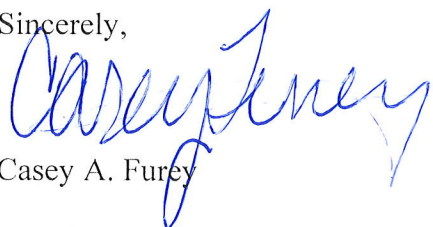
On behalf of Bridger Pipeline LLC, enclosed for filing in the above-referenced matter, please find seven copies of the aerial map set, as well as a USB drive containing the electronic version of the same. On February 23, 2021, a revised project map set was filed with the Commission as Docket No. 25 in response to requests from Commission staff. The Docket No. 25 map set was updated to include the locations of data points obtained from the North Dakota Geological Survey pertaining to areas of potential geologic instability that were reviewed by Bridger as part of the project's siting review and assessment, and to depict the National Grasslands and State Trust Lands located within the project study area although outside of the proposed 300 foot corridor.

Upon subsequent discussion with Commission staff, Bridger agreed to adjust the map's scale to aid in viewing and discussion of the project at hearing. To accomplish this, the two-mile raptor survey buffer previously depicted in the prior map sets has been removed from the enclosed filing. Please be advised the enclosed map set does not contain new information, and the project route and corridor remain unchanged from that depicted in the application.

Please feel free to contact me if you have any questions. Thank you.

33 PU-20-430 Filed 03/17/2021 Pages: 21
Aerial Map Set
Bridger Pipeline LLC
Casey Furey, Crowley Fleck, PLLP

Sincerely,

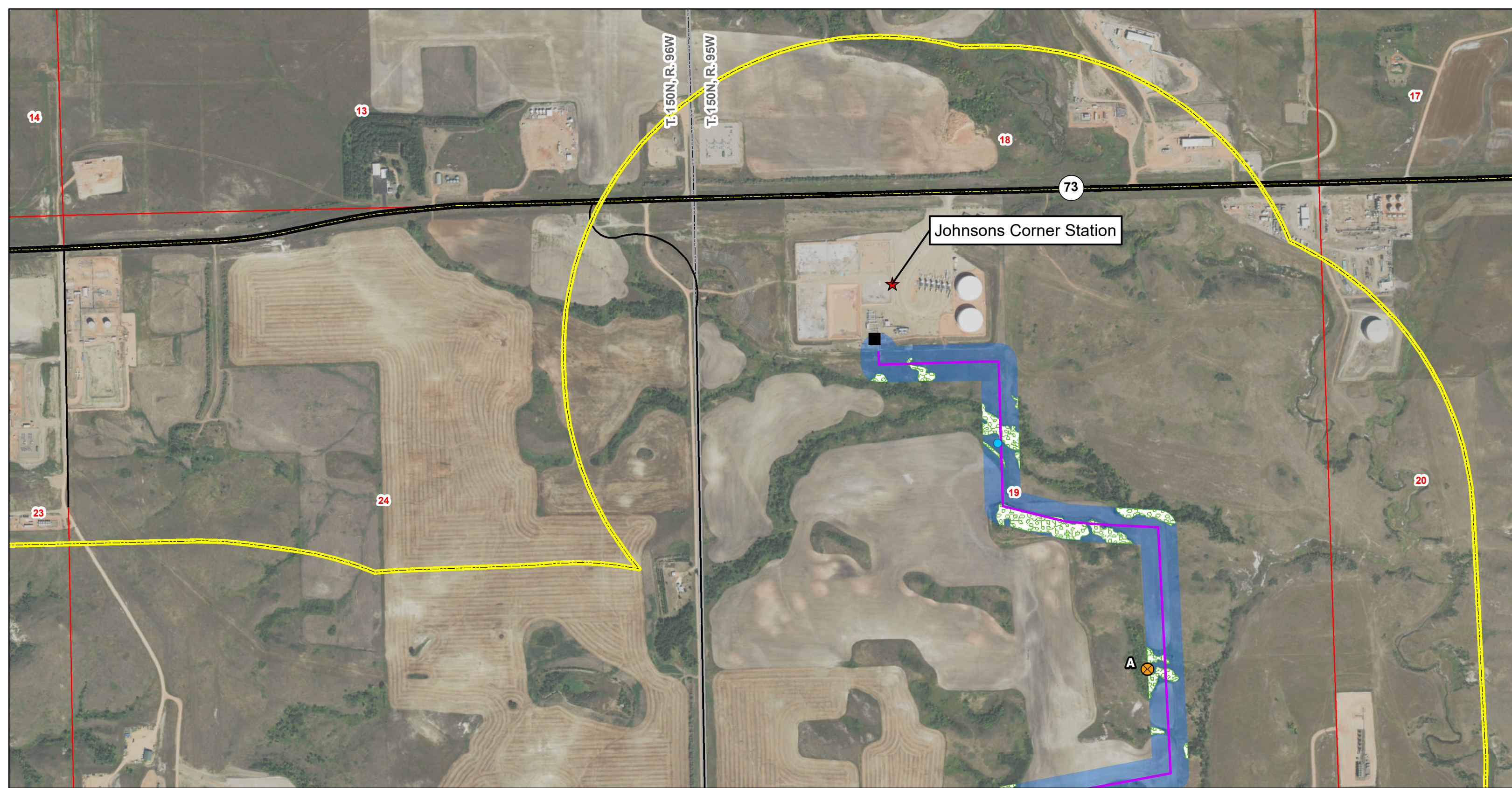


Casey A. Furey

CAF/lh

Enc.

cc: Brian Johnson (via email)
Adam Renfandt (via email)
Distribution List (Doc. #10,685,646)



Johnson's Corner Station

73

18

17

13

T. 150N, R. 96W

T. 150N, R. 95W

14

24

23

20

19

A

Johnson's Corner to Wilson Station

- | | | | | |
|-----------------|---------------------------------|---------------------------|---------------------------|--------------------|
| ★ Facility | ⊗ Potential Area of Instability | — Highway | ▨ ND Trust Lands | □ Section Boundary |
| ■ Block Valve | — Non-Constructed Pipeline | — Roads | ▨ National Grasslands | N
↑ |
| ● Wetlands | — Constructed Pipeline | ■ 300ft Pipeline Corridor | ▨ Woody Vegetation | |
| ● Noxious Weeds | — Named Streams | □ 1mile Study Area | ▨ Township/Range Boundary | |

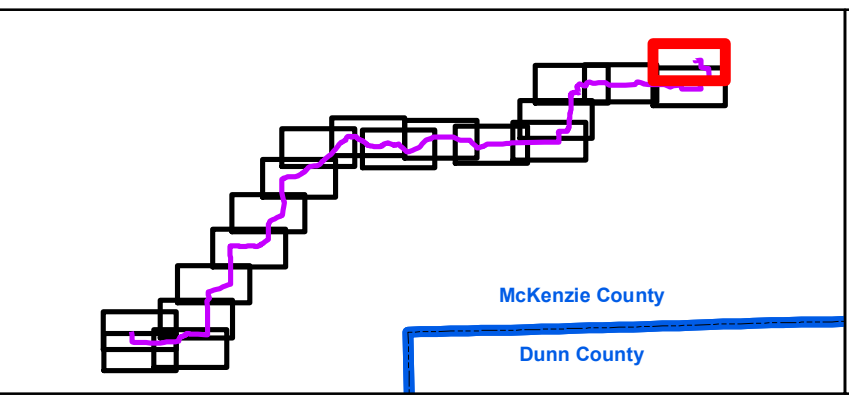
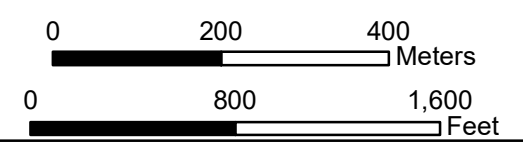
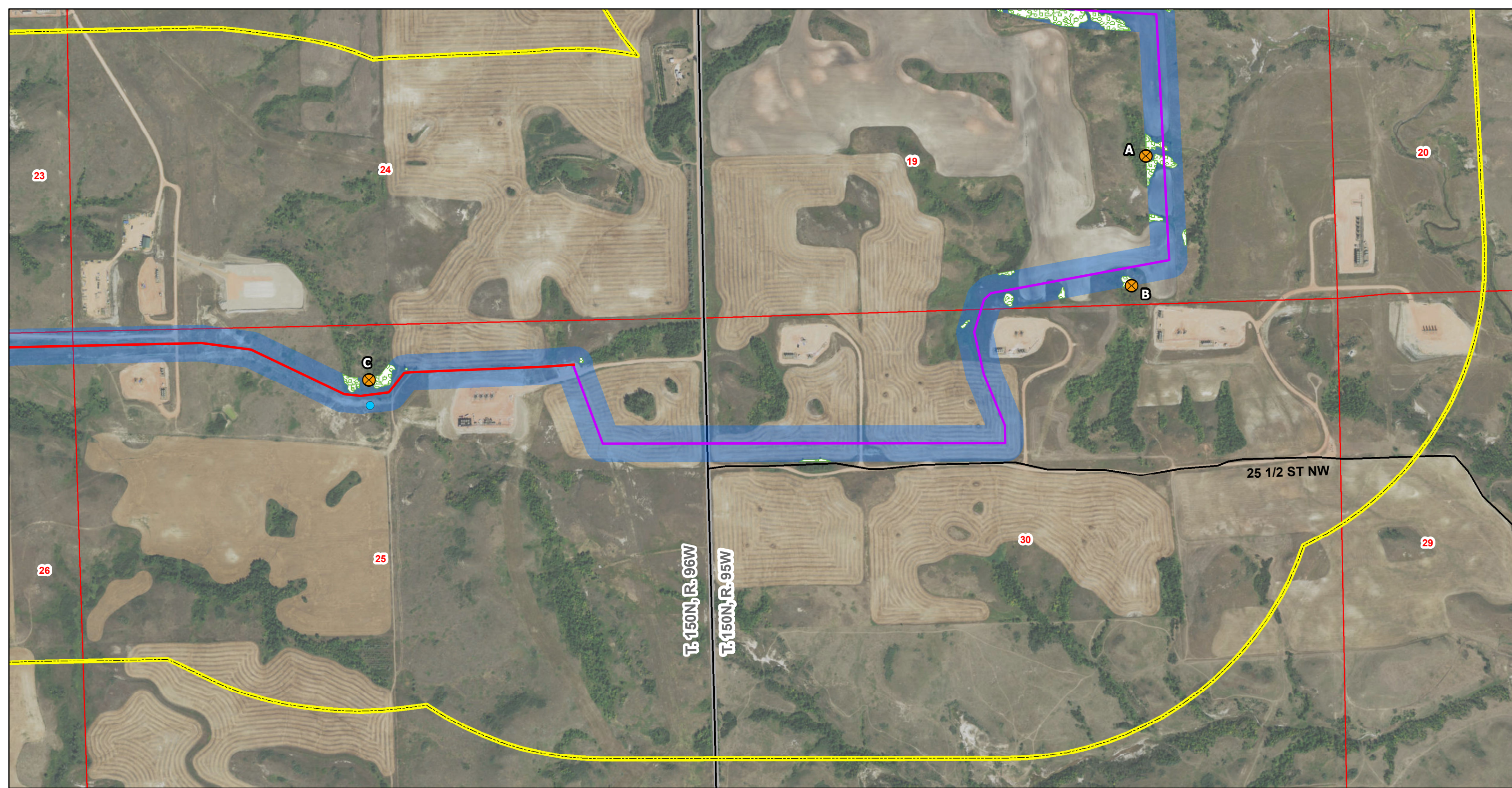


Figure 1.A
T. 150N, R. 96W & R. 95W
McKenzie County, North Dakota





Johnson's Corner to Wilson Station

- | | | | | |
|-----------------|---------------------------------|---------------------------|---------------------------|--------------------|
| ★ Facility | ⊗ Potential Area of Instability | — Highway | ▨ ND Trust Lands | ▭ Section Boundary |
| ■ Block Valve | — Non-Constructed Pipeline | — Roads | ▨ National Grasslands | |
| ● Wetlands | — Constructed Pipeline | ■ 300ft Pipeline Corridor | ▨ Woody Vegetation | |
| ● Noxious Weeds | — Named Streams | ▭ 1mile Study Area | ▭ Township/Range Boundary | |

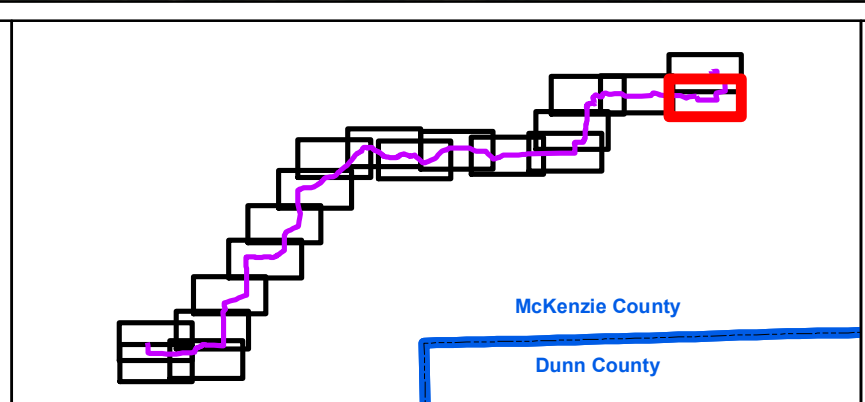
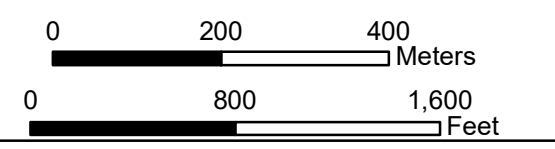
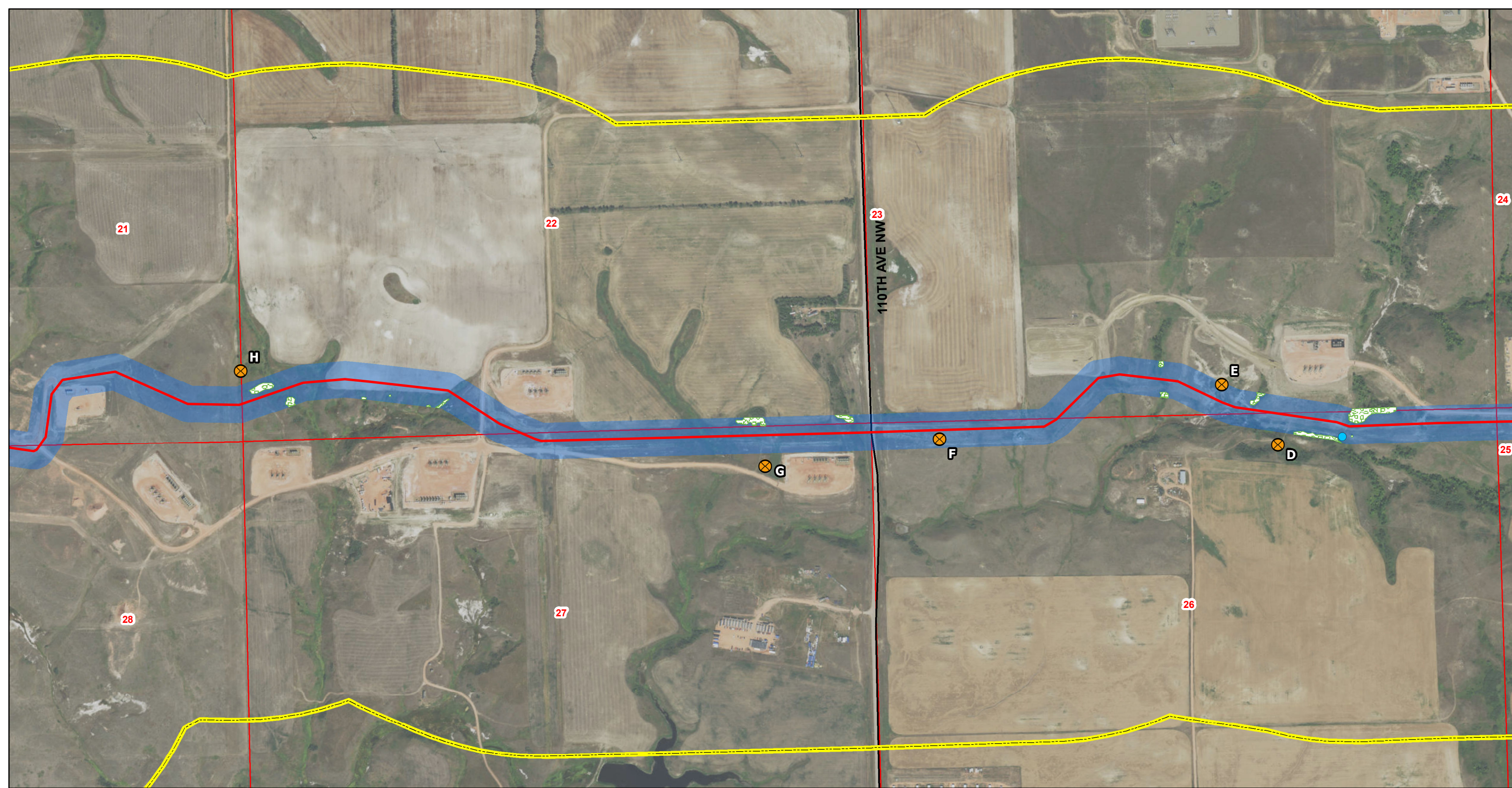


Figure 1.A
T. 150N, R. 96W & R. 95W
McKenzie County, North Dakota





Johnson's Corner to Wilson Station

- | | | | | |
|-----------------|---------------------------------|---------------------------|---------------------------|--------------------|
| ★ Facility | ⊗ Potential Area of Instability | — Highway | ▨ ND Trust Lands | □ Section Boundary |
| ■ Block Valve | — Non-Constructed Pipeline | — Roads | ▨ National Grasslands | N
↑ |
| ● Wetlands | — Constructed Pipeline | ■ 300ft Pipeline Corridor | ▨ Woody Vegetation | |
| ● Noxious Weeds | — Named Streams | ▭ 1mile Study Area | ▭ Township/Range Boundary | |

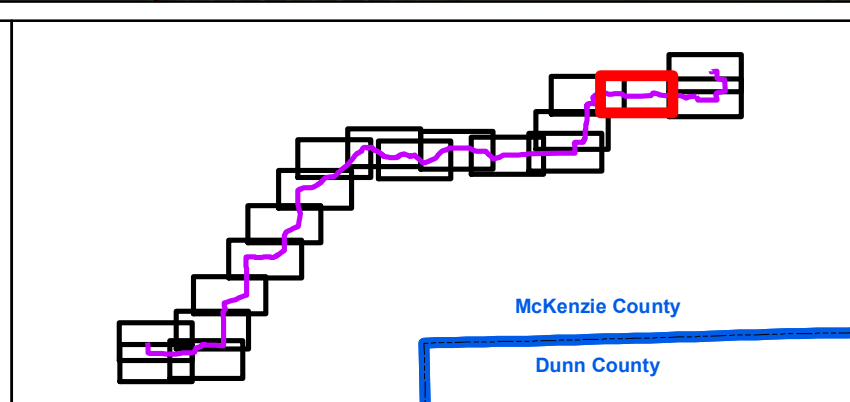
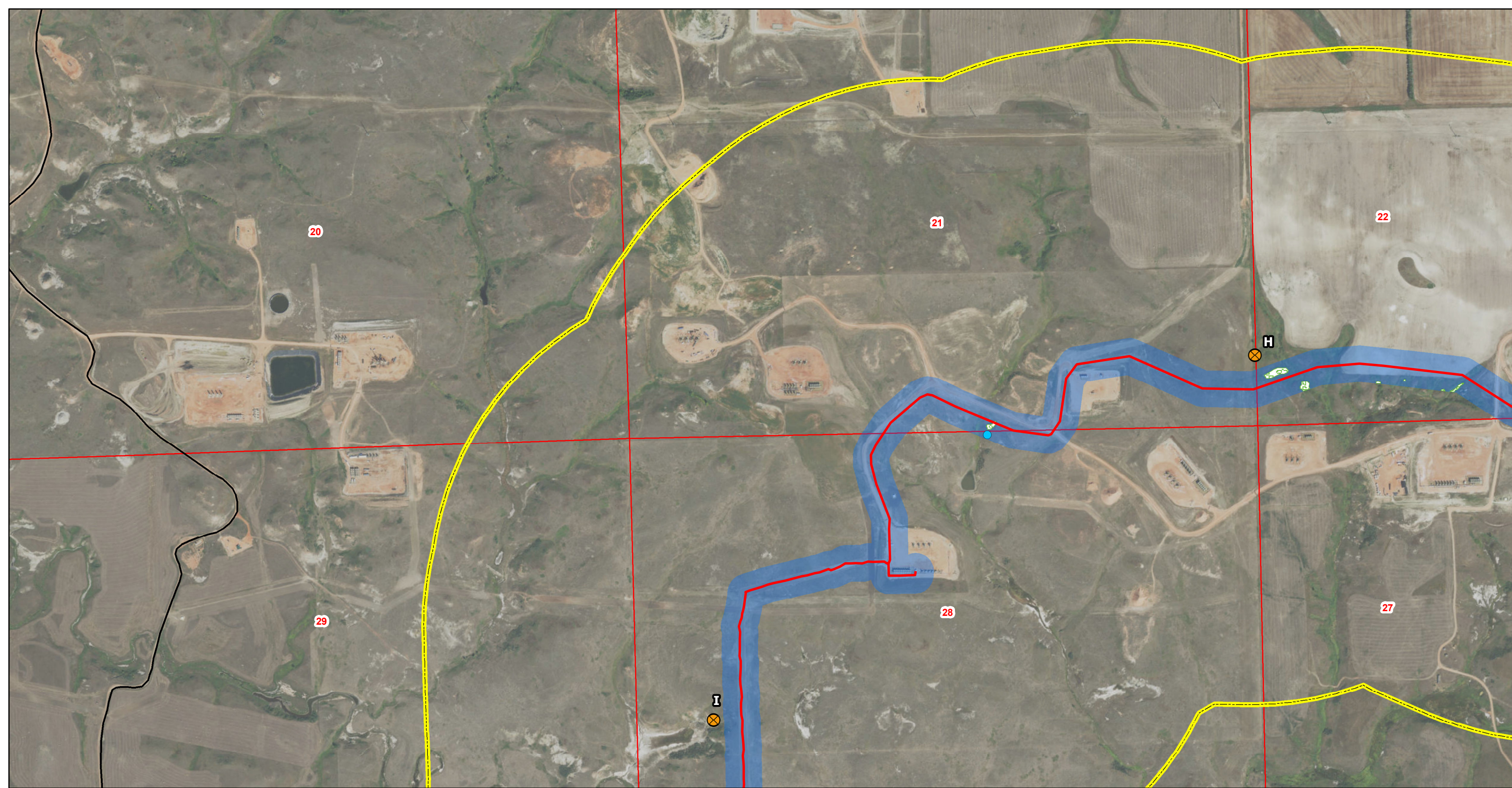


Figure 1.A
T. 150N, R. 96W
McKenzie County, North Dakota

Page 3 of 19

0 200 400 Meters

0 800 1,600 Feet



Johnson's Corner to Wilson Station

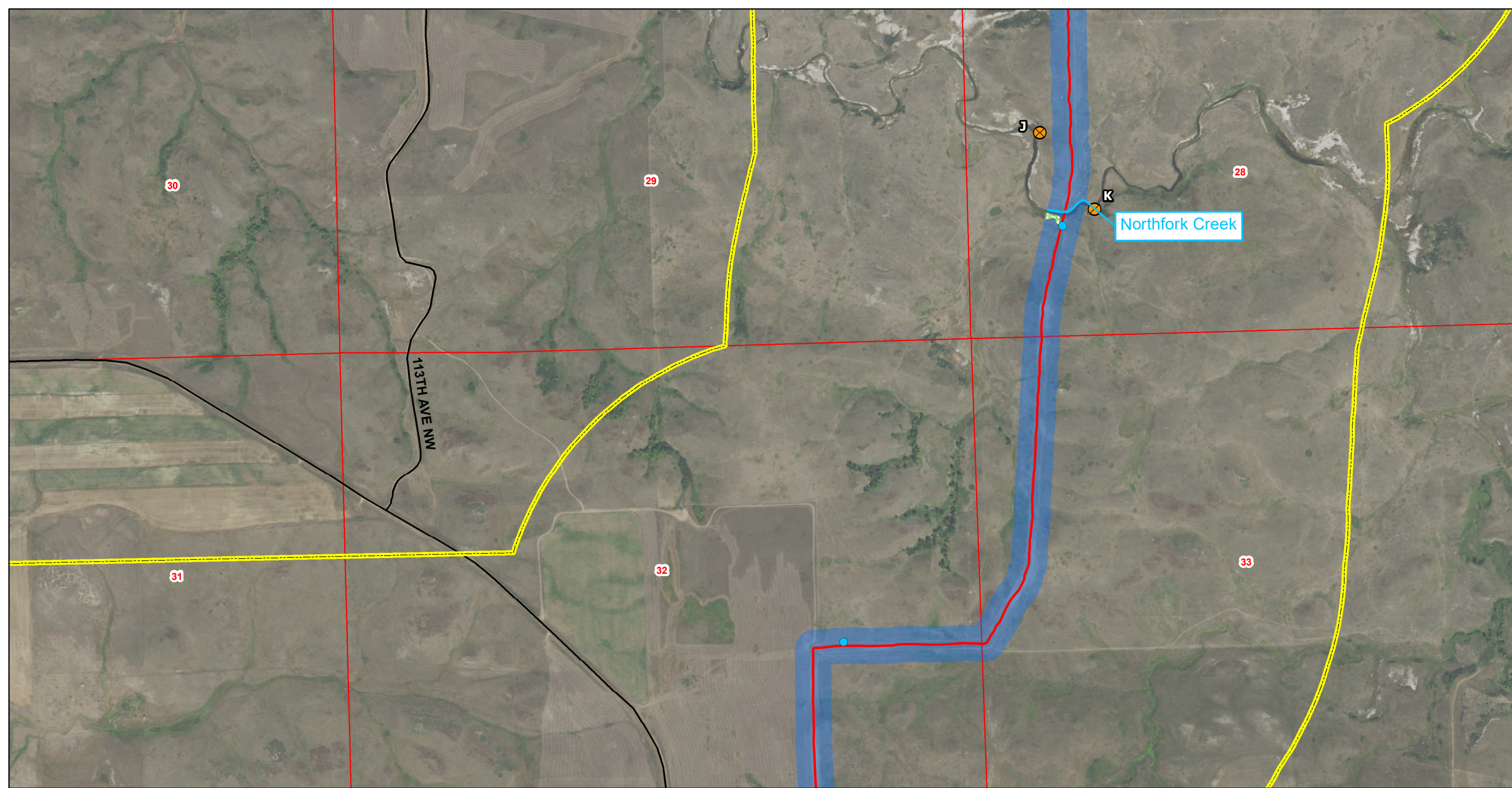
★ Facility	⊗ Potential Area of Instability	▬ Highway	▨ ND Trust Lands	▭ Section Boundary
■ Block Valve	— Non-Constructed Pipeline	— Roads	▨ National Grasslands	N ↑
● Wetlands	— Constructed Pipeline	■ 300ft Pipeline Corridor	▨ Woody Vegetation	
● Noxious Weeds	— Named Streams	▭ 1mile Study Area	▭ Township/Range Boundary	

Figure 1.A
T. 150N, R. 96W
McKenzie County, North Dakota

Page 4 of 19

0 200 400
Meters

0 800 1,600
Feet



Johnson's Corner to Wilson Station

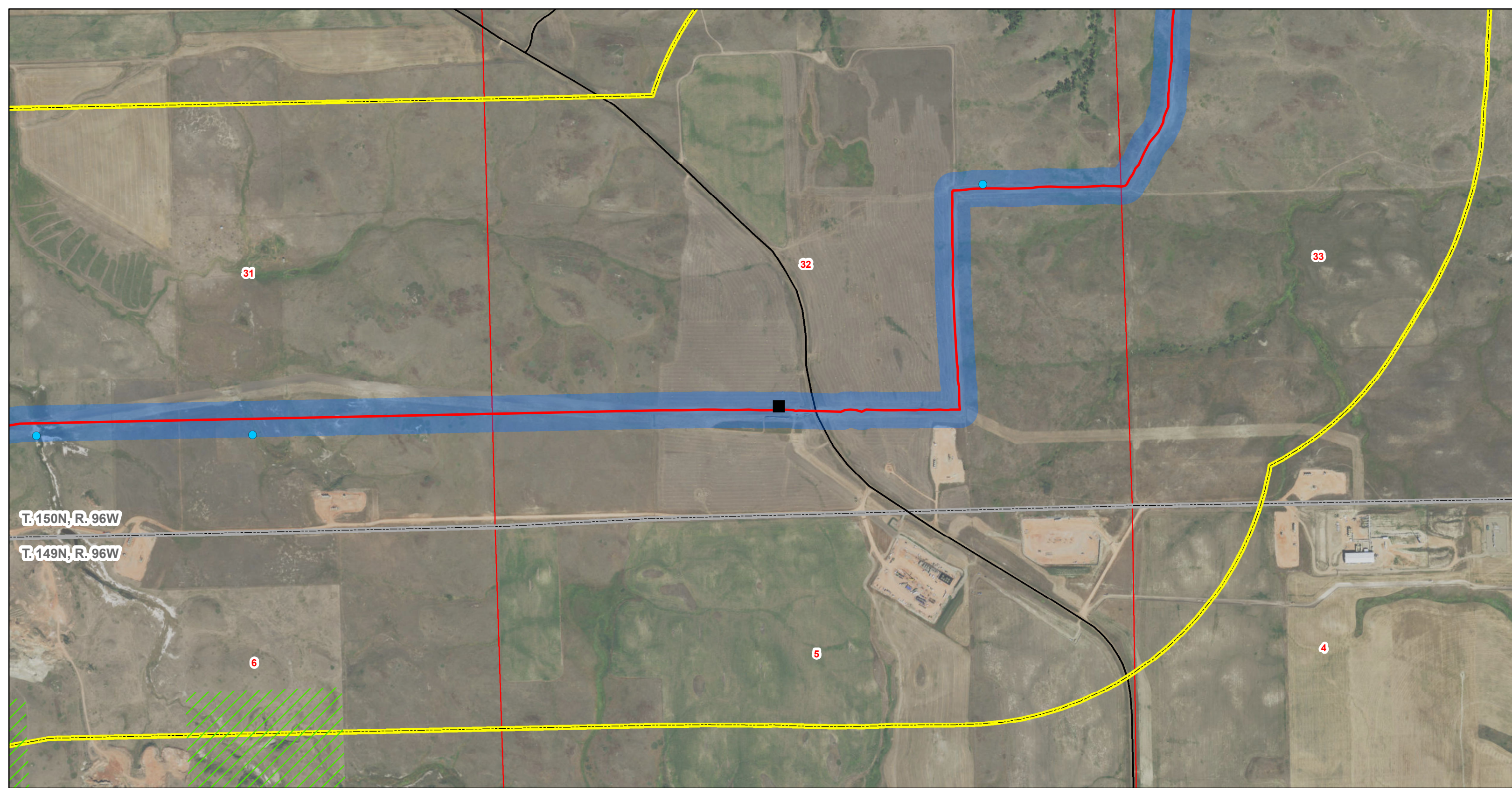
★ Facility	⊗ Potential Area of Instability	▬ Highway	▨ ND Trust Lands	▭ Section Boundary
■ Block Valve	— Non-Constructed Pipeline	— Roads	▨ National Grasslands	▲ North
● Wetlands	— Constructed Pipeline	■ 300ft Pipeline Corridor	▨ Woody Vegetation	
● Noxious Weeds	— Named Streams	▭ 1mile Study Area	▭ Township/Range Boundary	

Figure 1.A
T. 150N, R. 96W
McKenzie County, North Dakota

Page 5 of 19

0 200 400 Meters

0 800 1,600 Feet



Johnson's Corner to Wilson Station

- | | | | | |
|-----------------|---------------------------------|---------------------------|---------------------------|--------------------|
| ★ Facility | ⊗ Potential Area of Instability | ▬ Highway | ▨ ND Trust Lands | □ Section Boundary |
| ■ Block Valve | — Non-Constructed Pipeline | — Roads | ▨ National Grasslands | ↑ N |
| ● Wetlands | — Constructed Pipeline | ■ 300ft Pipeline Corridor | ▨ Woody Vegetation | |
| ● Noxious Weeds | — Named Streams | ▭ 1mile Study Area | ▭ Township/Range Boundary | |

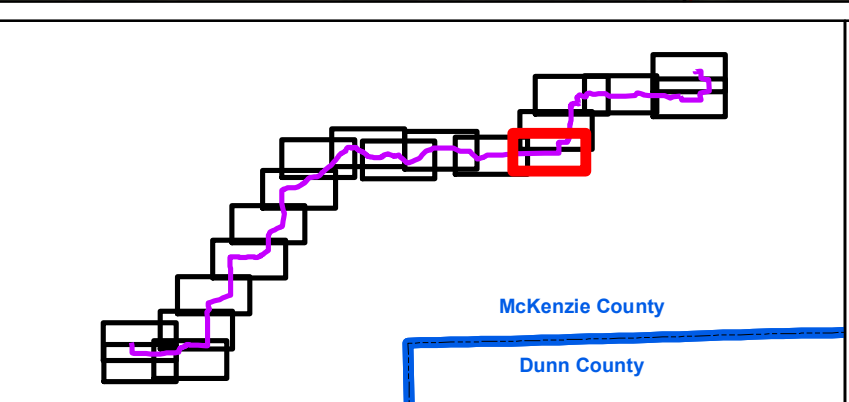
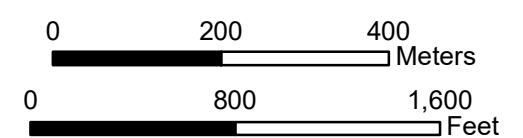
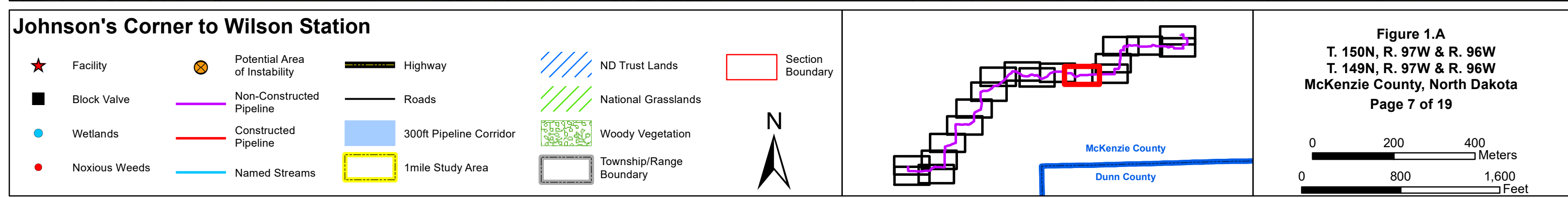
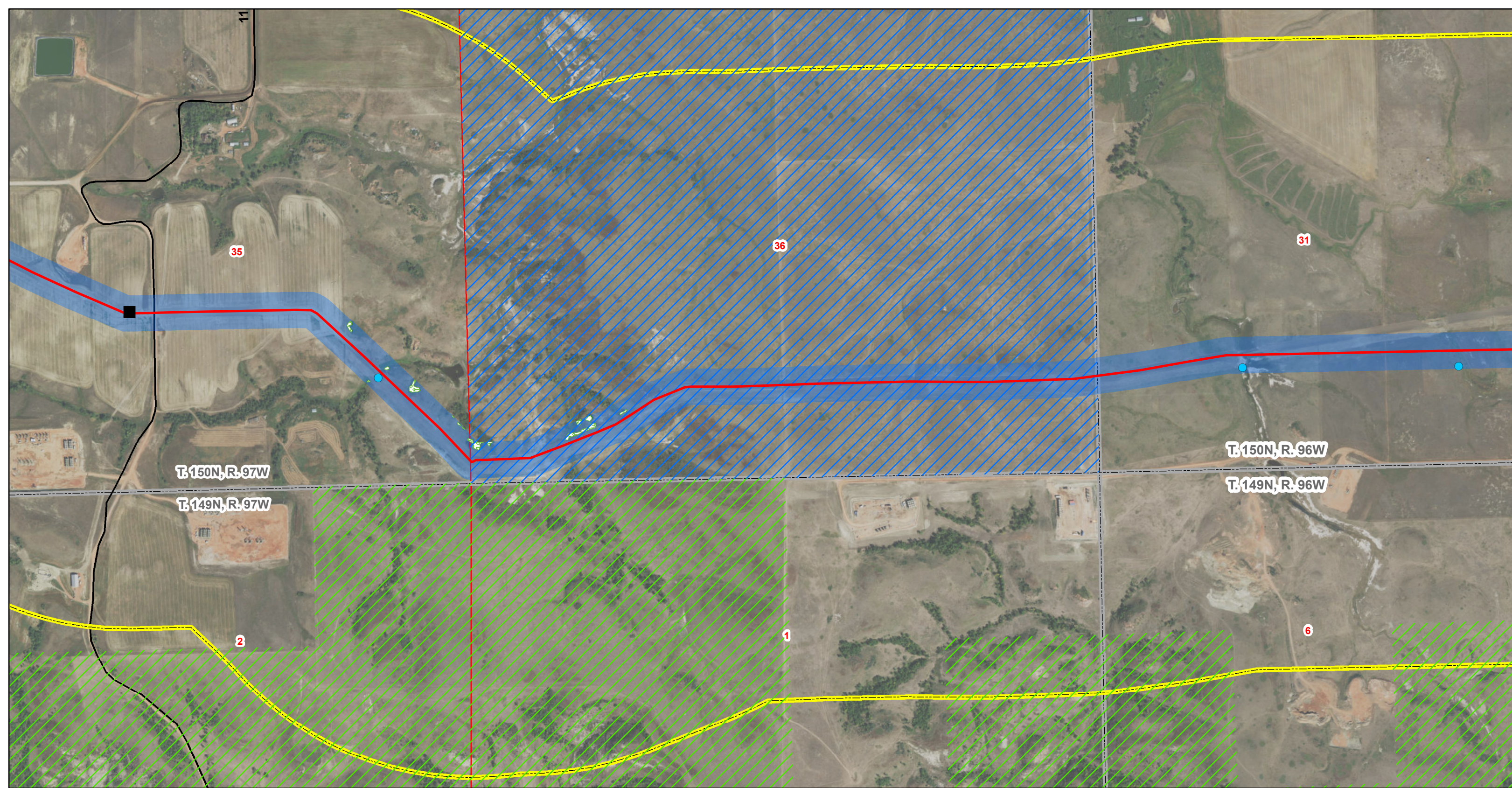
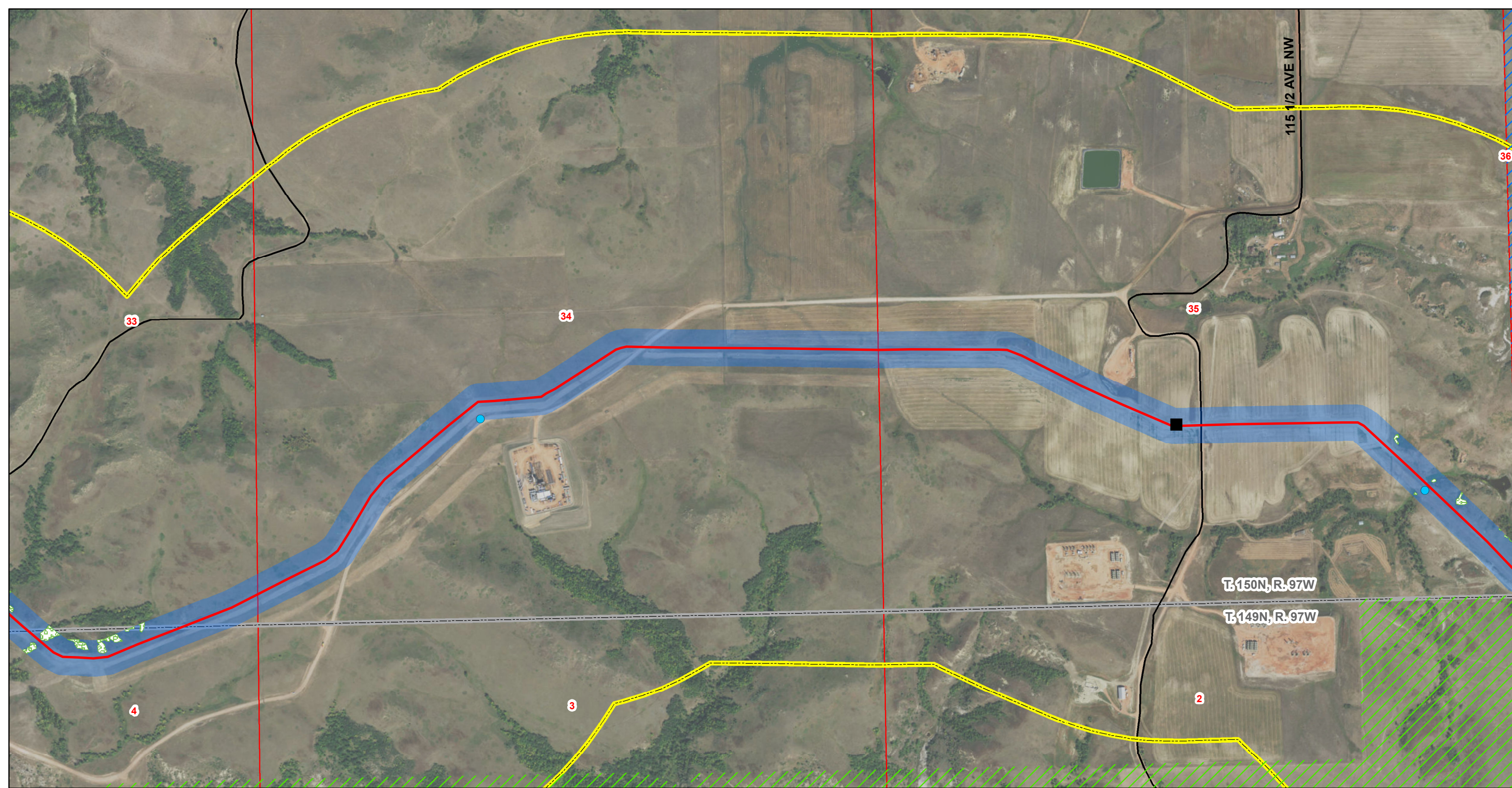


Figure 1.A
T. 150N, R. 96W & T. 149N, R. 96W
McKenzie County, North Dakota





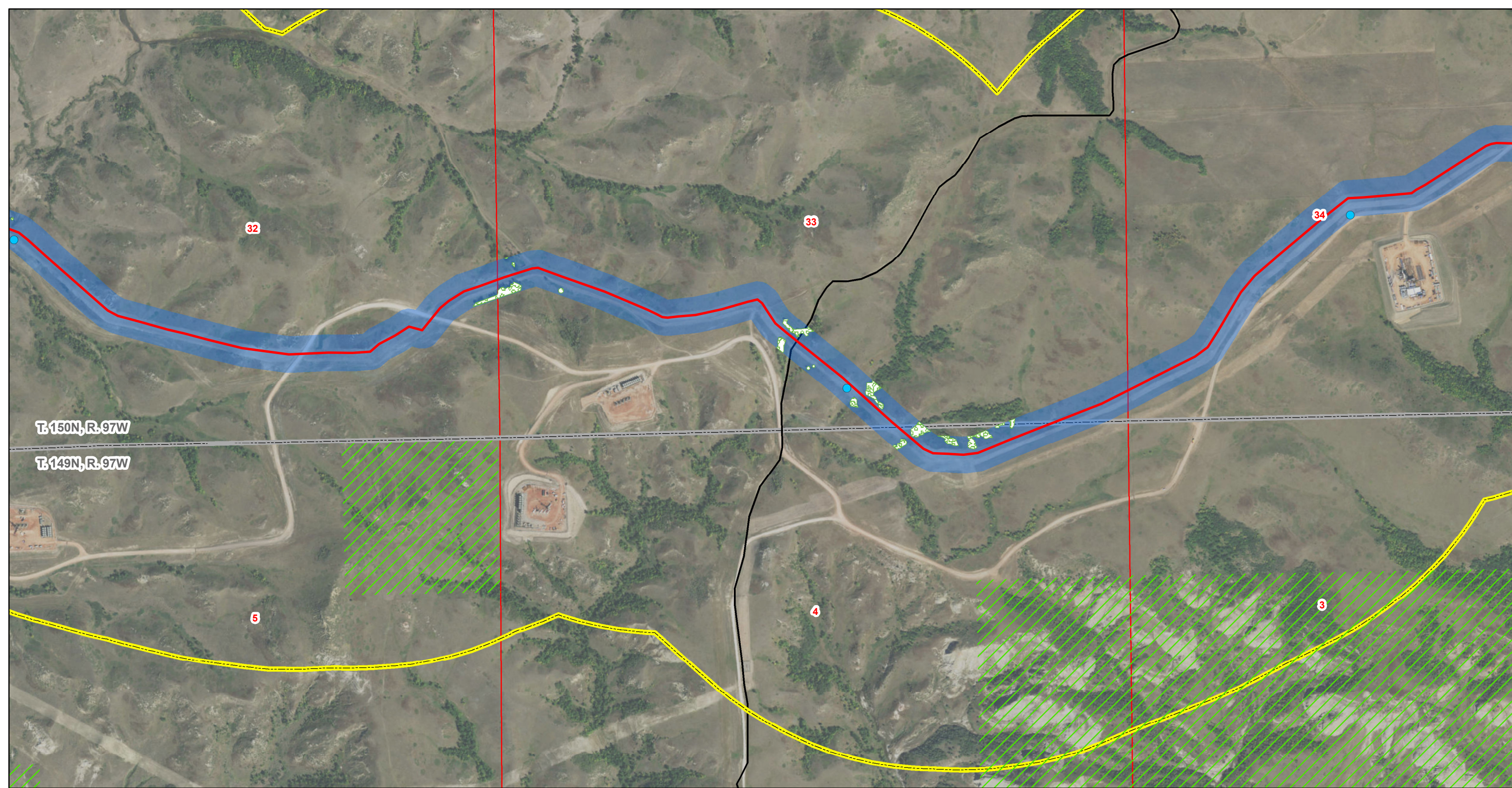


Johnson's Corner to Wilson Station

★ Facility	⊗ Potential Area of Instability	▬ Highway	▨ ND Trust Lands	□ Section Boundary
■ Block Valve	— Non-Constructed Pipeline	— Roads	▨ National Grasslands	N ↑
● Wetlands	— Constructed Pipeline	■ 300ft Pipeline Corridor	▨ Woody Vegetation	
● Noxious Weeds	— Named Streams	▭ 1mile Study Area	▭ Township/Range Boundary	

Figure 1.A
T. 150N, R. 97W
T. 149N, R. 97W
McKenzie County, North Dakota
Page 8 of 19

0 200 400 Meters
0 800 1,600 Feet



Johnson's Corner to Wilson Station

★ Facility	⊗ Potential Area of Instability	— Highway	▨ ND Trust Lands	□ Section Boundary
■ Block Valve	— Non-Constructed Pipeline	— Roads	▨ National Grasslands	↑ N
● Wetlands	— Constructed Pipeline	■ 300ft Pipeline Corridor	▨ Woody Vegetation	
● Noxious Weeds	— Named Streams	▭ 1mile Study Area	▭ Township/Range Boundary	

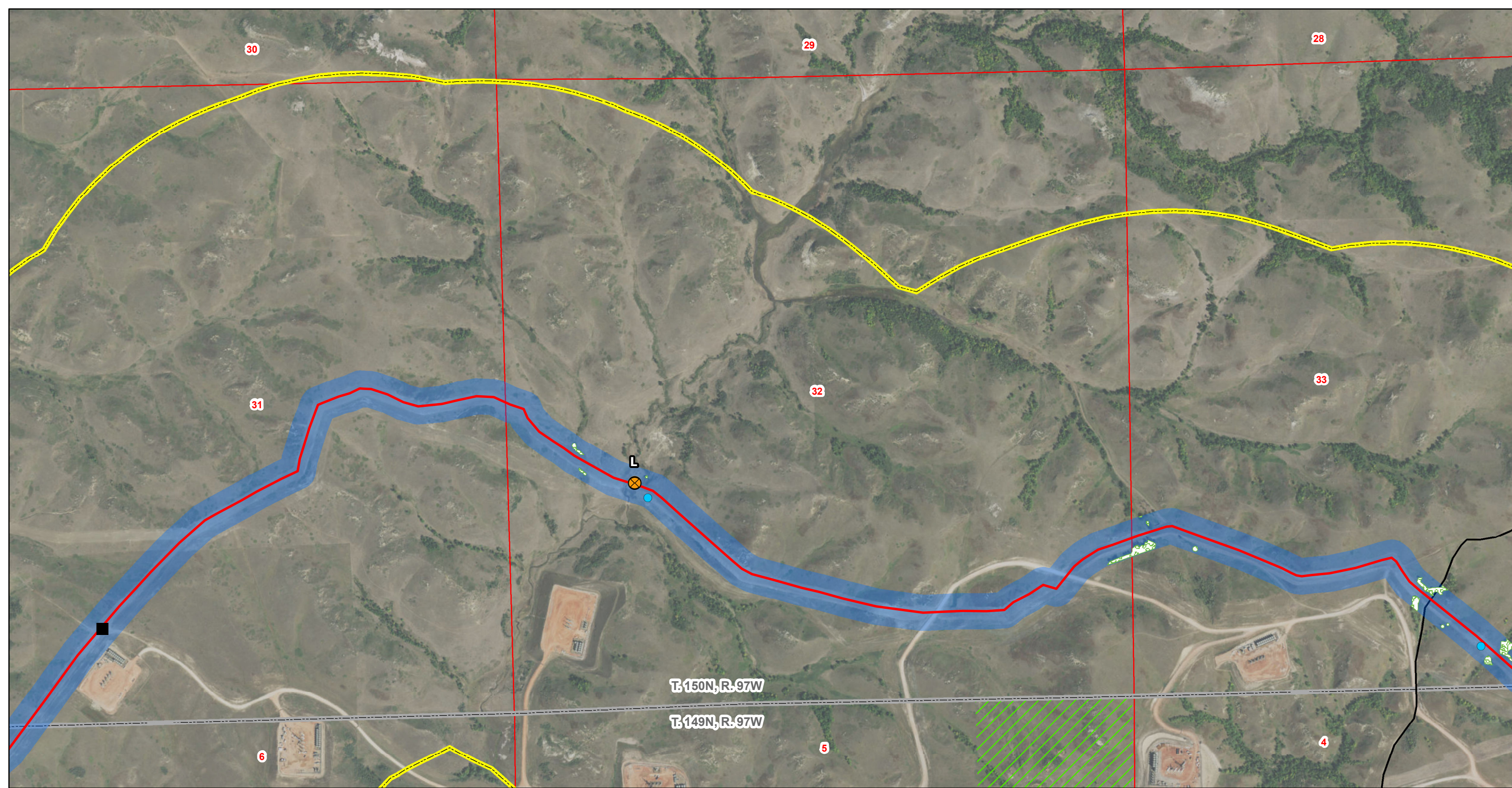
Figure 1.A
T. 150N, R. 97W
T. 149N, R. 97W
McKenzie County, North Dakota
Page 9 of 19

0 200 400

Meters

0 800 1,600

Feet



Johnson's Corner to Wilson Station

- | | | | | |
|-----------------|---------------------------------|---------------------------|---------------------------|--------------------|
| ★ Facility | ⊗ Potential Area of Instability | — Highway | ▨ ND Trust Lands | □ Section Boundary |
| ■ Block Valve | — Non-Constructed Pipeline | — Roads | ▨ National Grasslands | N |
| ● Wetlands | — Constructed Pipeline | ■ 300ft Pipeline Corridor | ▨ Woody Vegetation | |
| ● Noxious Weeds | — Named Streams | ▭ 1mile Study Area | ▭ Township/Range Boundary | |

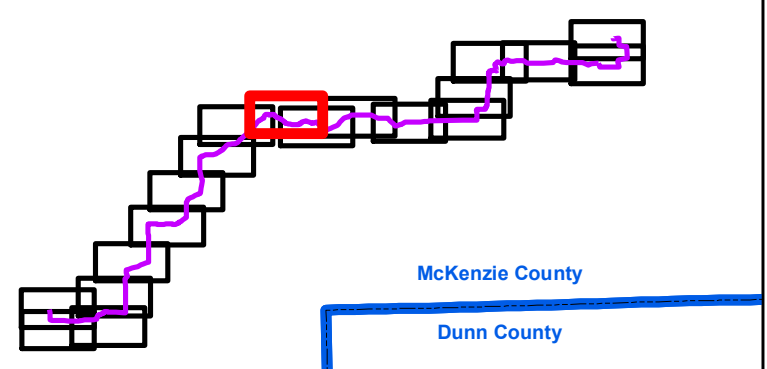
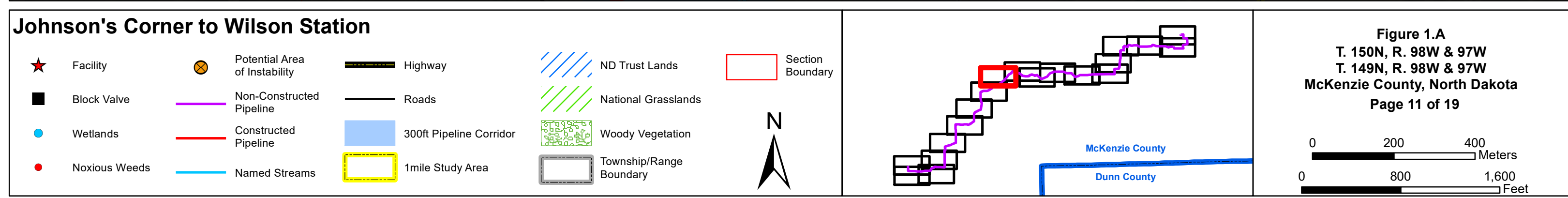
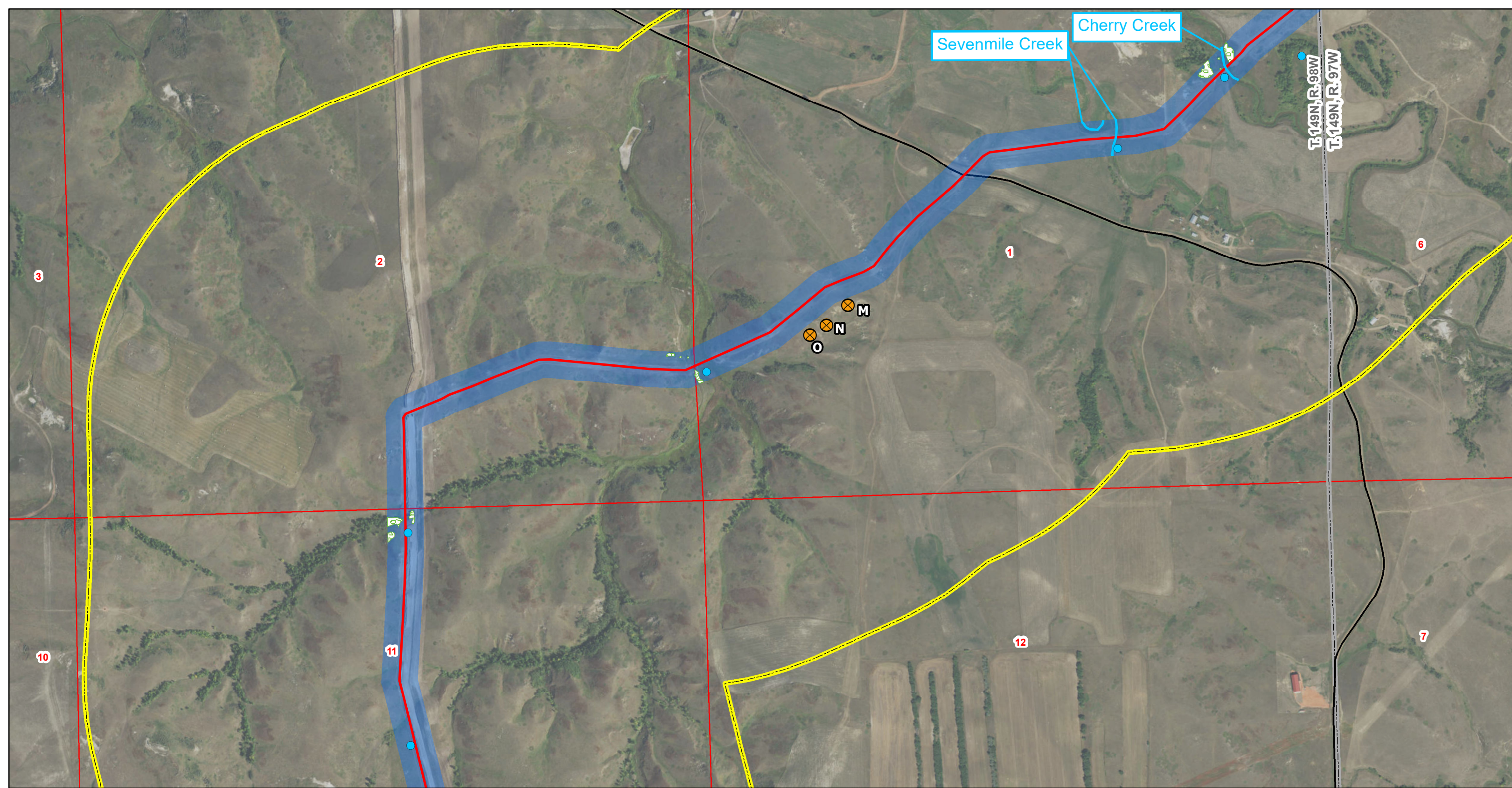


Figure 1.A
 T. 150N, R. 97W
 T. 149N, R. 97W
 McKenzie County, North Dakota
 Page 10 of 19

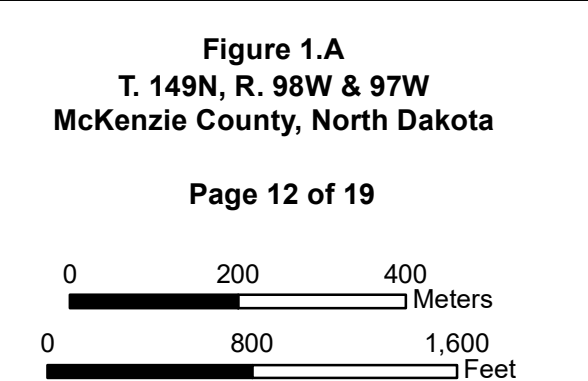
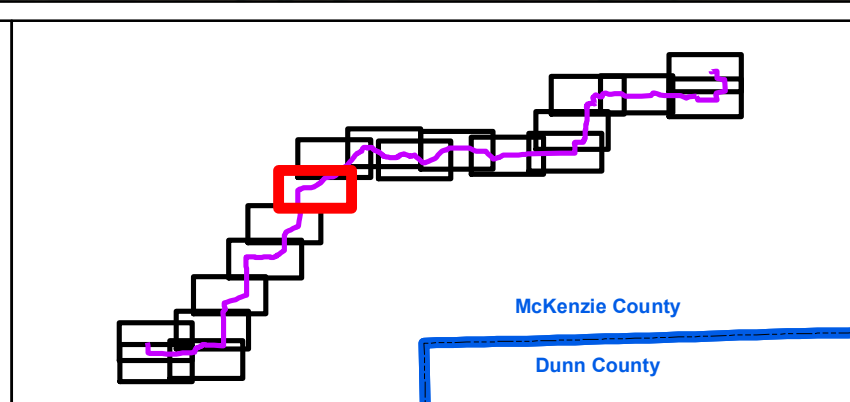
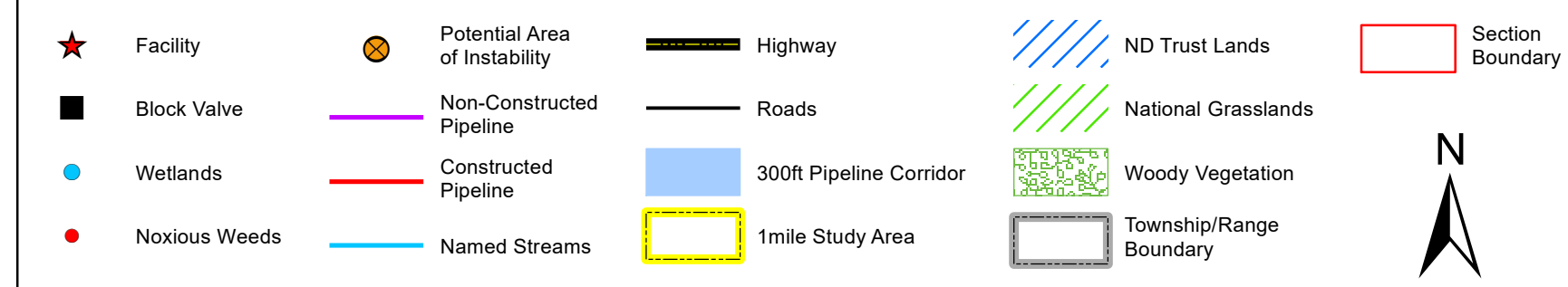
0 200 400 Meters

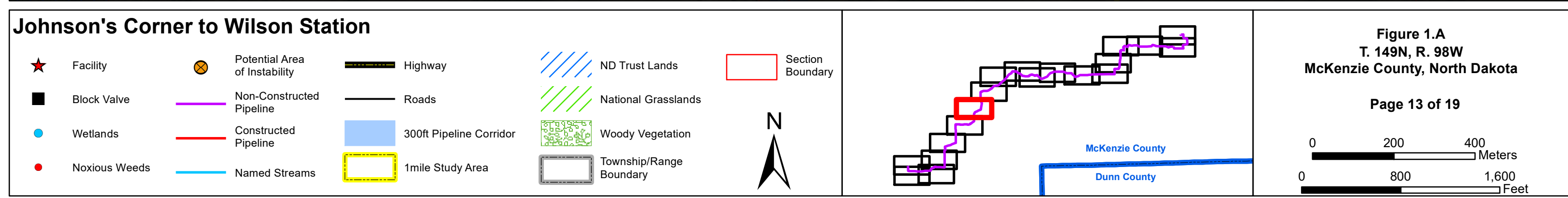
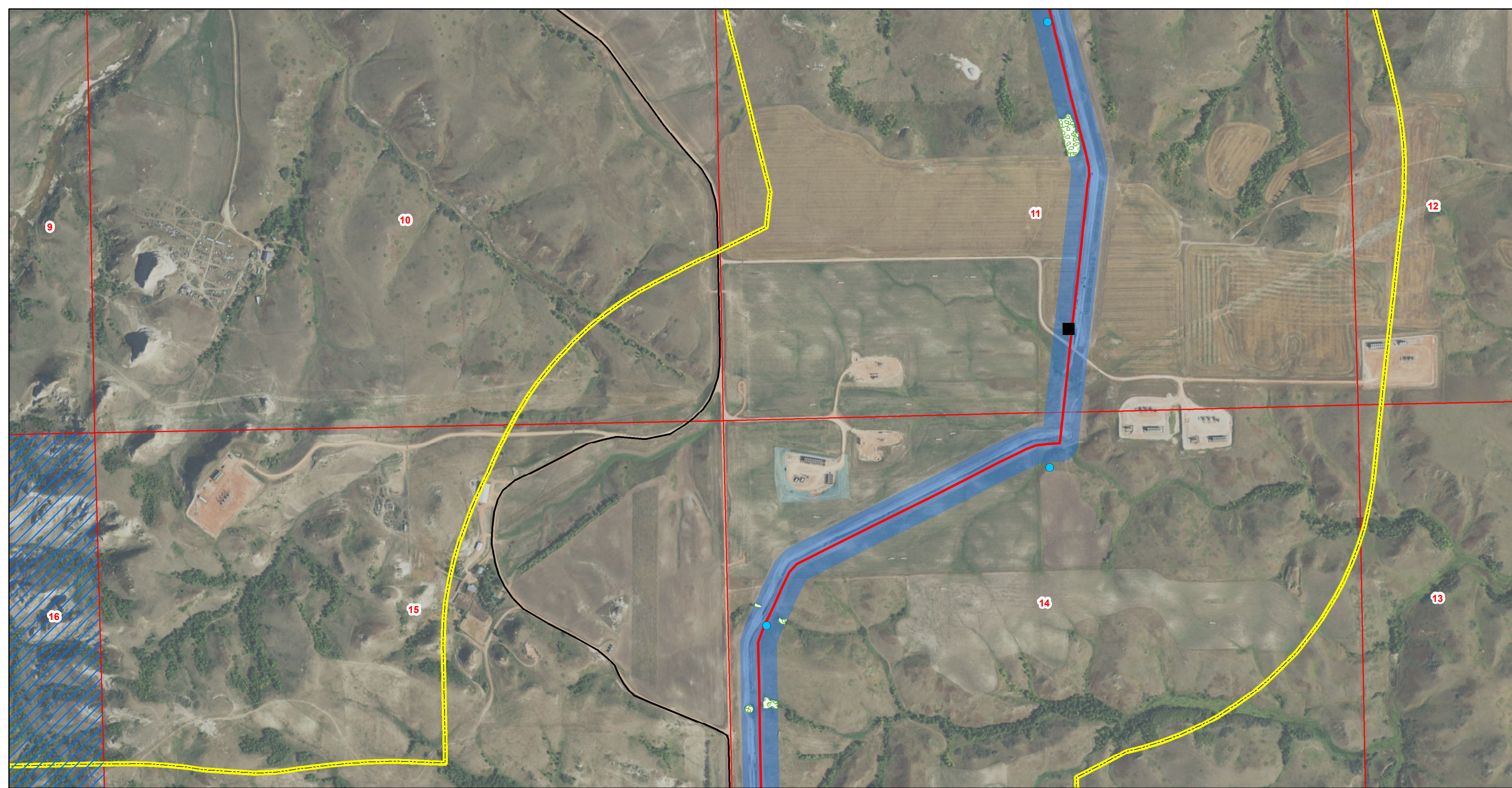
0 800 1,600 Feet

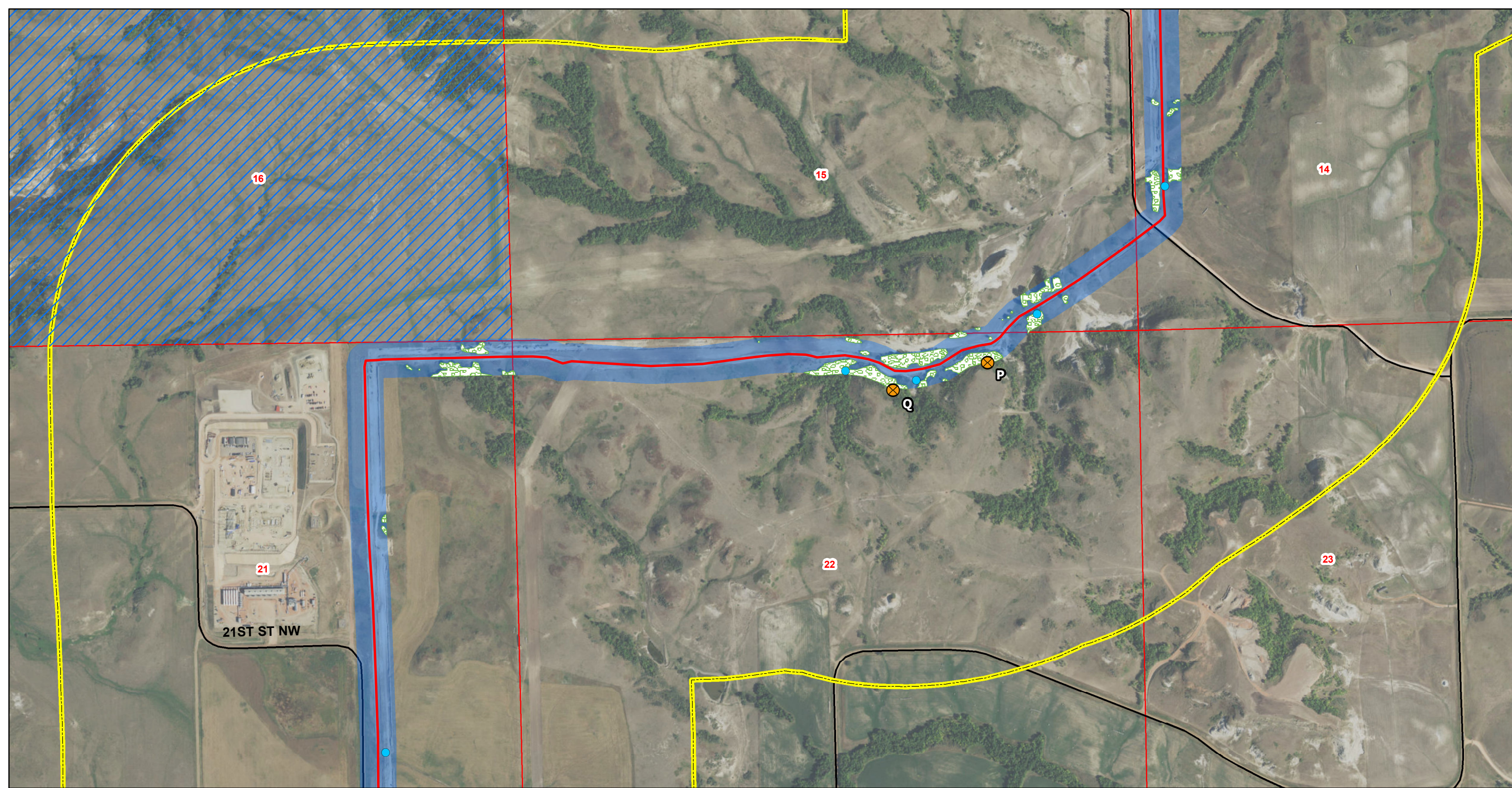




Johnson's Corner to Wilson Station







Johnson's Corner to Wilson Station

- | | | | | |
|-----------------|---------------------------------|---------------------------|---------------------------|--------------------|
| ★ Facility | ⊗ Potential Area of Instability | — Highway | ▨ ND Trust Lands | □ Section Boundary |
| ■ Block Valve | — Non-Constructed Pipeline | — Roads | ▨ National Grasslands | ↑ N |
| ● Wetlands | — Constructed Pipeline | ■ 300ft Pipeline Corridor | ▨ Woody Vegetation | |
| ● Noxious Weeds | — Named Streams | ▭ 1mile Study Area | ▭ Township/Range Boundary | |

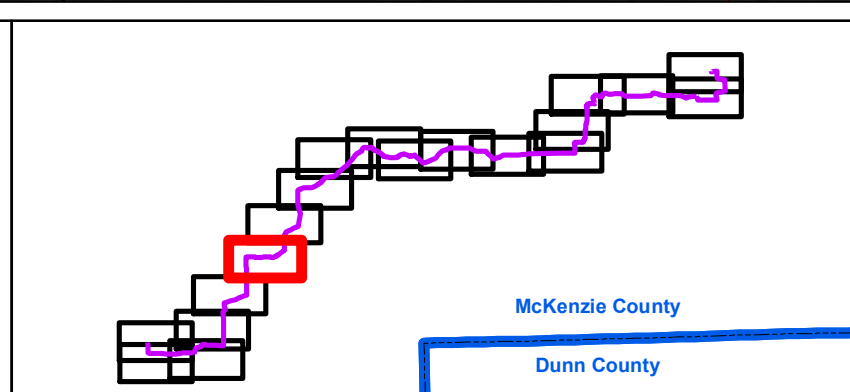
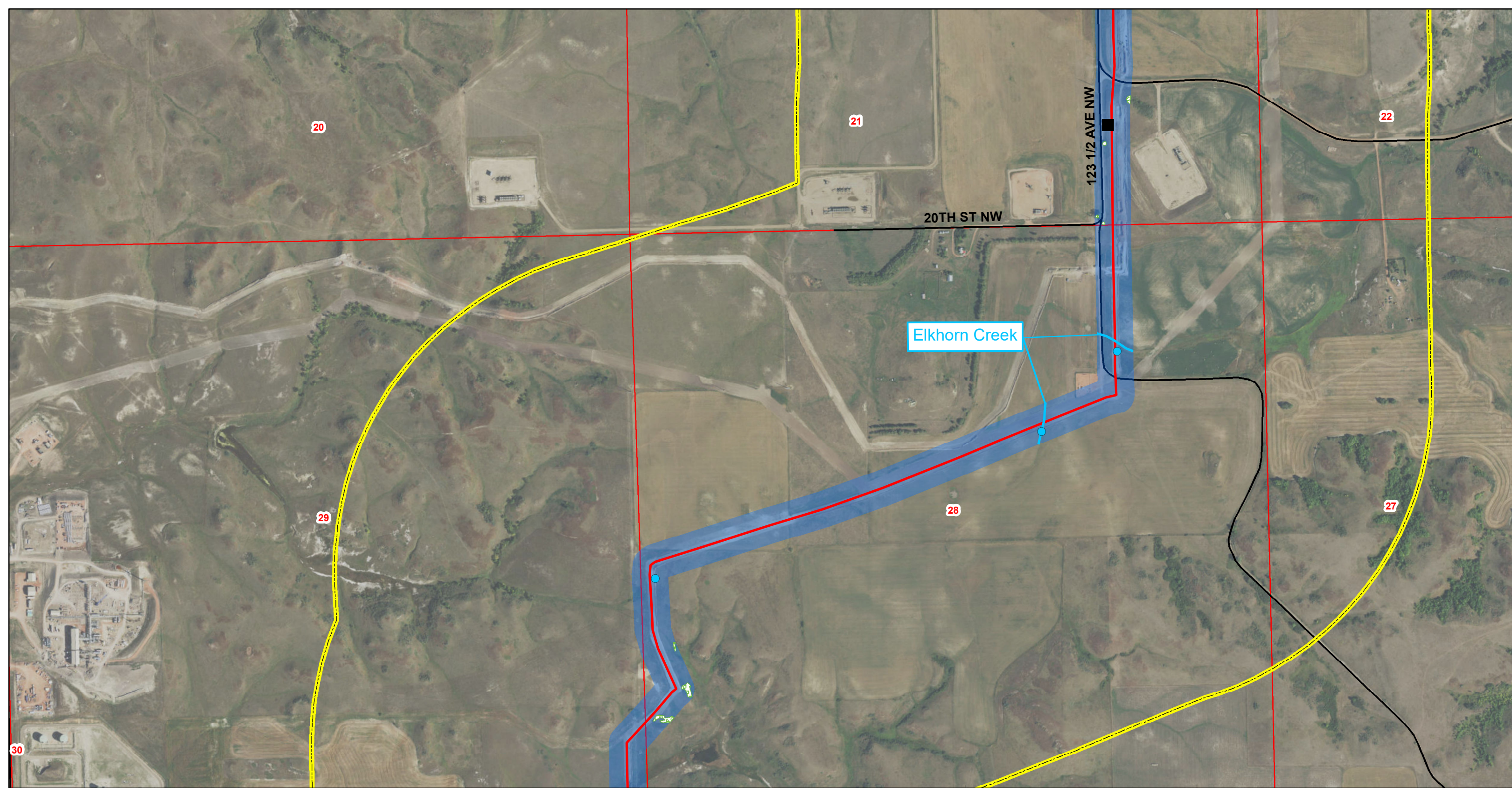


Figure 1.A
T. 149N, R. 98W
McKenzie County, North Dakota

Page 14 of 19

0 200 400 Meters

0 800 1,600 Feet



Johnson's Corner to Wilson Station

- | | | | | |
|-----------------|---------------------------------|---------------------------|---------------------------|--------------------|
| ★ Facility | ⊗ Potential Area of Instability | ▬ Highway | ▨ ND Trust Lands | ▭ Section Boundary |
| ■ Block Valve | — Non-Constructed Pipeline | — Roads | ▨ National Grasslands | N
↑ |
| ● Wetlands | — Constructed Pipeline | ■ 300ft Pipeline Corridor | ▨ Woody Vegetation | |
| ● Noxious Weeds | — Named Streams | ▭ 1mile Study Area | ▭ Township/Range Boundary | |

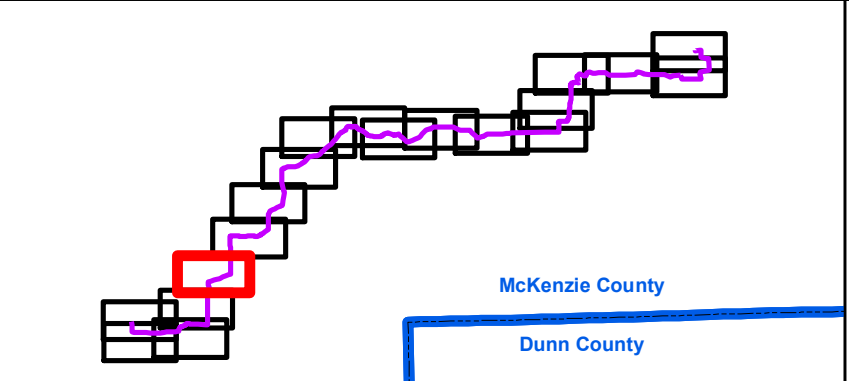
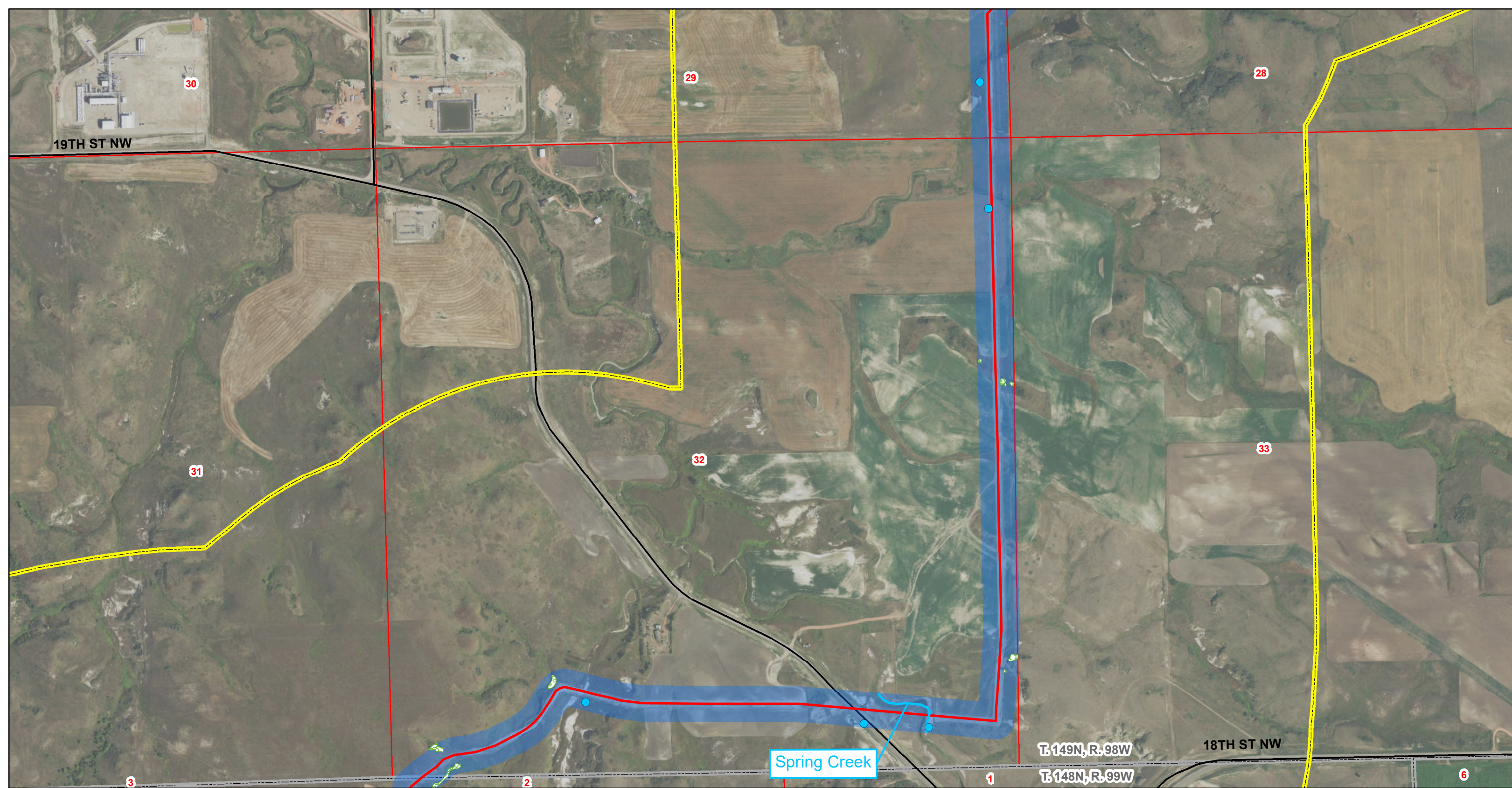


Figure 1.A
T. 149N, R. 98W
McKenzie County, North Dakota

Page 15 of 19

0 200 400 Meters
 0 800 1,600 Feet



Johnson's Corner to Wilson Station

- | | | | | |
|-----------------|---------------------------------|---------------------------|---------------------------|--------------------|
| ★ Facility | ⊗ Potential Area of Instability | — Highway | ▨ ND Trust Lands | □ Section Boundary |
| ■ Block Valve | — Non-Constructed Pipeline | — Roads | ▨ National Grasslands | N
↑ |
| ● Wetlands | — Constructed Pipeline | ■ 300ft Pipeline Corridor | ▨ Woody Vegetation | |
| ● Noxious Weeds | — Named Streams | ▭ 1mile Study Area | ▭ Township/Range Boundary | |

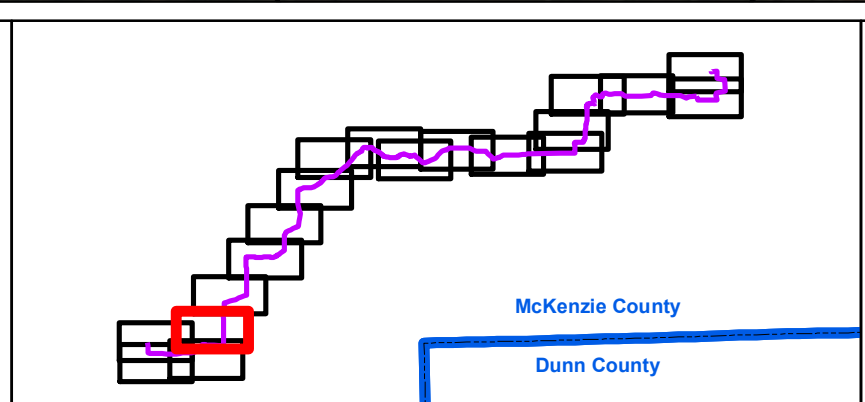
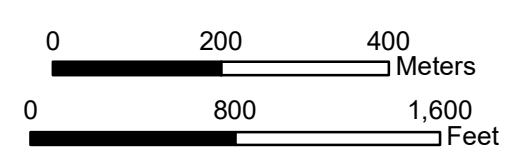
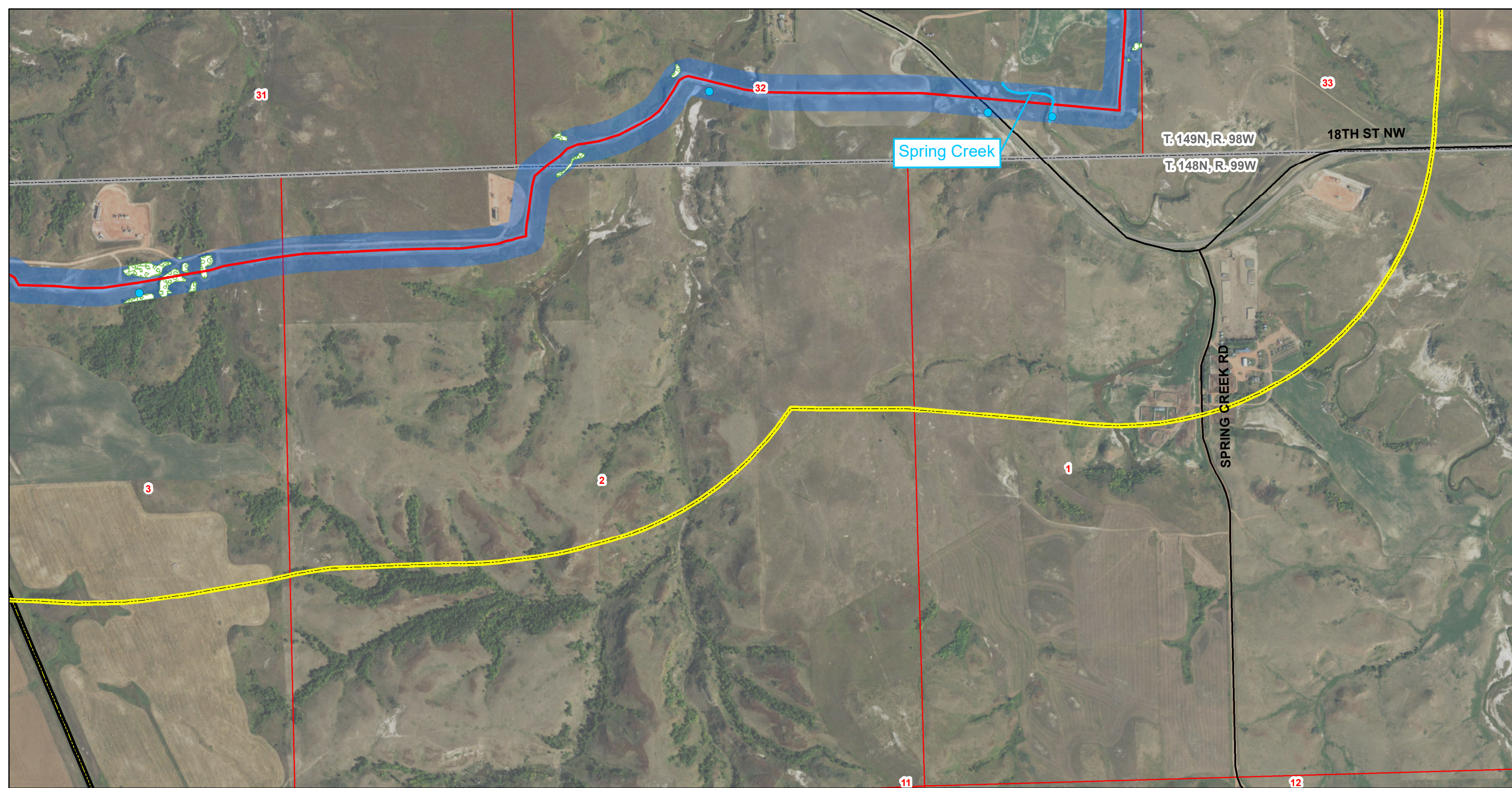


Figure 1.A
 T. 149N, R. 98W
 T. 148N, R. 99W
 McKenzie County, North Dakota
 Page 16 of 19





Johnson's Corner to Wilson Station

- | | | | | |
|-----------------|---------------------------------|---------------------------|---------------------------|--------------------|
| ★ Facility | ⊗ Potential Area of Instability | — Highway | ▨ ND Trust Lands | □ Section Boundary |
| ■ Block Valve | — Non-Constructed Pipeline | — Roads | ▨ National Grasslands | N
↑ |
| ● Wetlands | — Constructed Pipeline | ■ 300ft Pipeline Corridor | ▨ Woody Vegetation | |
| ● Noxious Weeds | — Named Streams | ▭ 1mile Study Area | ▭ Township/Range Boundary | |

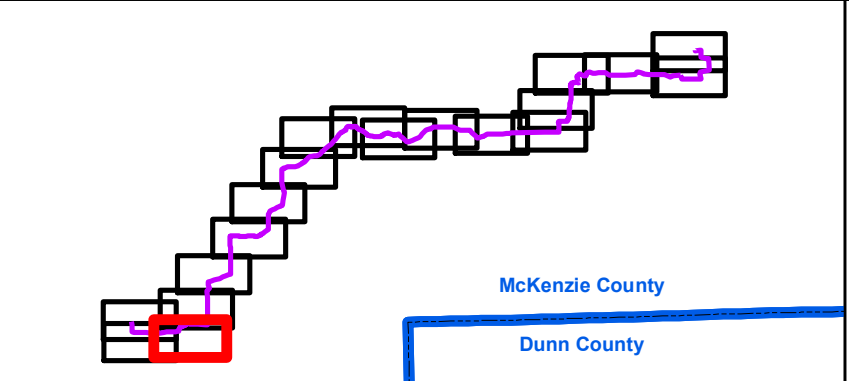
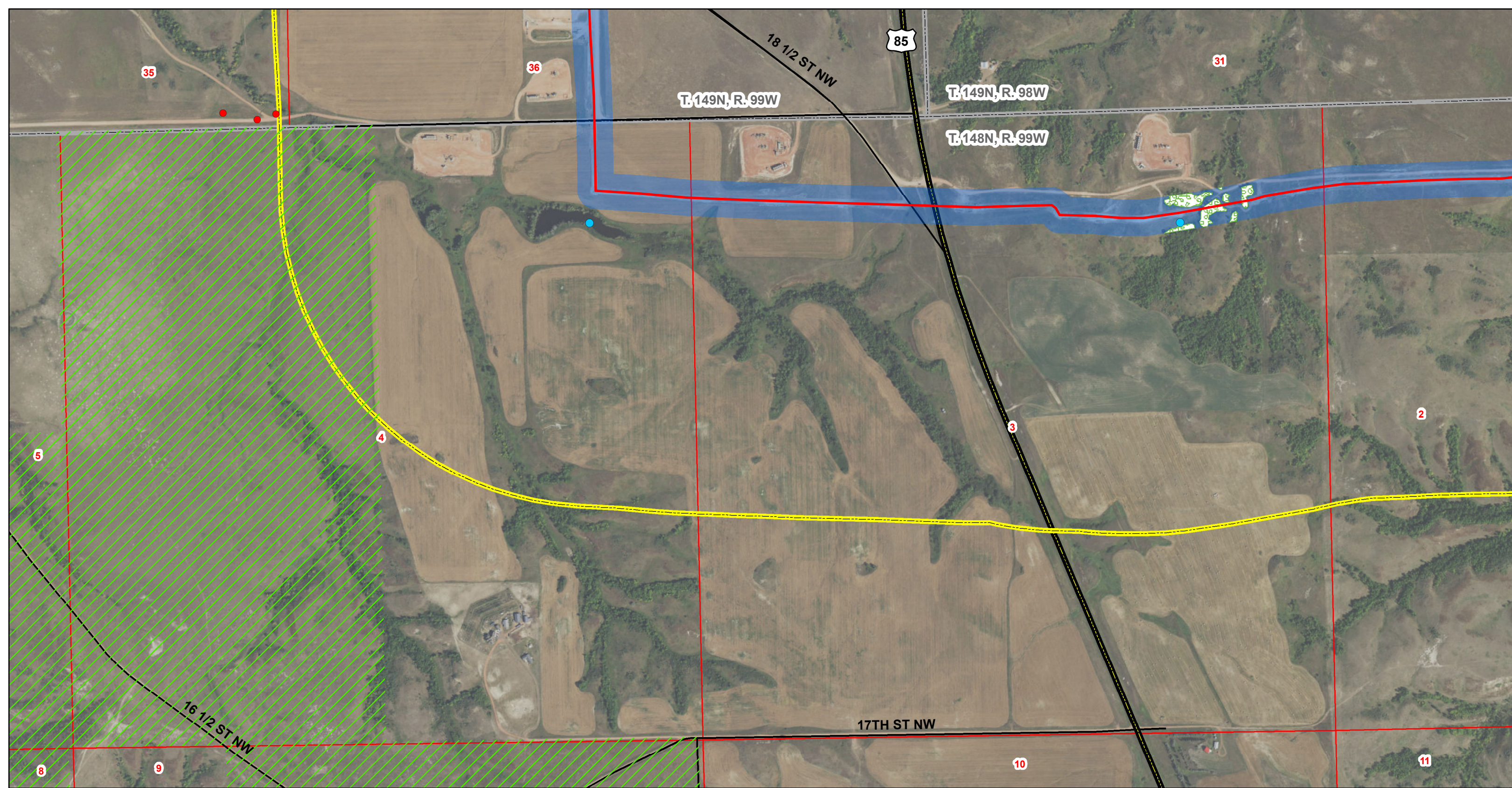


Figure 1.A
 T. 149N, R. 98W
 T. 148N, R. 99W
 McKenzie County, North Dakota
 Page 17 of 19

0 200 400 Meters
 0 800 1,600 Feet



Johnson's Corner to Wilson Station

- | | | | | |
|-----------------|---------------------------------|---------------------------|---------------------------|--------------------|
| ★ Facility | ⊗ Potential Area of Instability | — Highway | ▨ ND Trust Lands | □ Section Boundary |
| ■ Block Valve | — Non-Constructed Pipeline | — Roads | ▨ National Grasslands | ⬆ North Arrow |
| ● Wetlands | — Constructed Pipeline | ■ 300ft Pipeline Corridor | ▨ Woody Vegetation | |
| ● Noxious Weeds | — Named Streams | ▭ 1mile Study Area | ▭ Township/Range Boundary | |

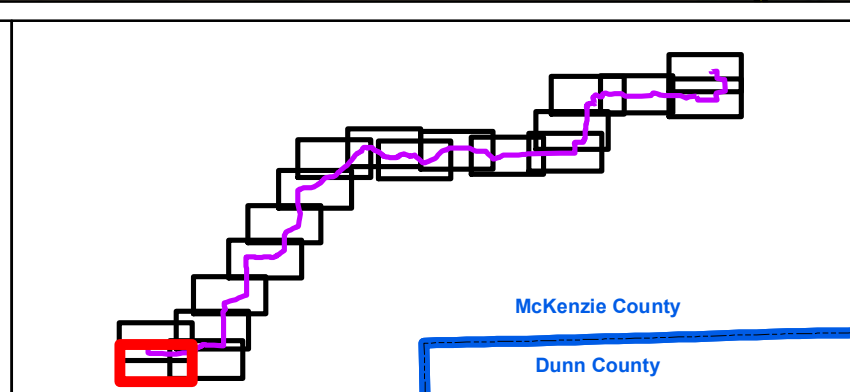


Figure 1.A
T. 149N, R. 99W & R. 98W
T. 148N, R. 99W
McKenzie County, North Dakota
Page 18 of 19

0 200 400 Meters
 0 800 1,600 Feet

