



Johnson's Corner to Wilson Station

- | | | | | |
|-----------------|---------------------------------|---------------------------|---------------------------|--------------------|
| ★ Facility | ⊗ Potential Area of Instability | — Highway | ▨ ND Trust Lands | ▭ Section Boundary |
| ■ Block Valve | — Non-Constructed Pipeline | — Roads | ▨ National Grasslands | ↑ N |
| ● Wetlands | — Constructed Pipeline | ■ 300ft Pipeline Corridor | ▨ Woody Vegetation | |
| ● Noxious Weeds | — Named Streams | ▭ 1mile Study Area | ▭ Township/Range Boundary | |

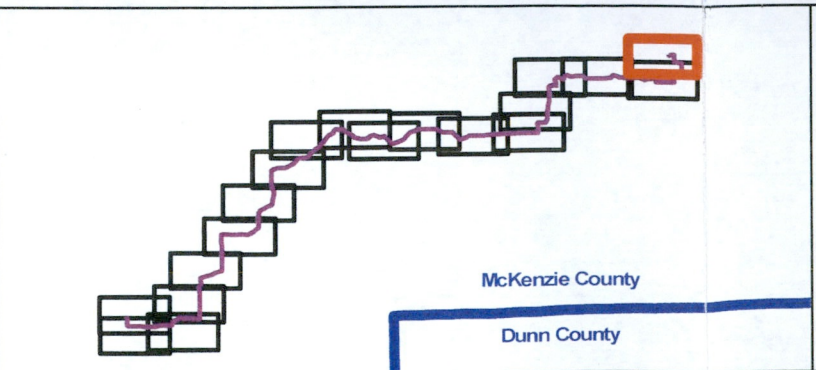


Figure 1.A
 T. 150N, R. 96W & R. 95W
 McKenzie County, North Dakota

Page 1 of 19

0 200 400 Meters
 0 800 1,600 Feet



Johnson's Corner to Wilson Station

- | | | | | |
|-----------------|---------------------------------|---------------------------|---------------------------|--------------------|
| ★ Facility | ⊗ Potential Area of Instability | ▬ Highway | ▨ ND Trust Lands | ▭ Section Boundary |
| ■ Block Valve | — Non-Constructed Pipeline | ▬ Roads | ▨ National Grasslands | |
| ● Wetlands | ▬ Constructed Pipeline | ■ 300ft Pipeline Corridor | ▨ Woody Vegetation | |
| ● Noxious Weeds | ▬ Named Streams | ▭ 1mile Study Area | ▭ Township/Range Boundary | |

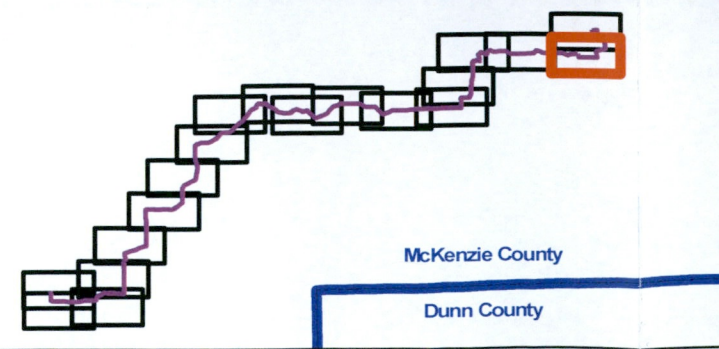
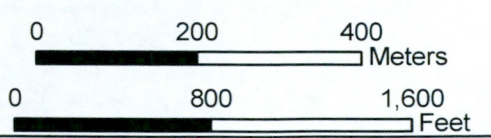
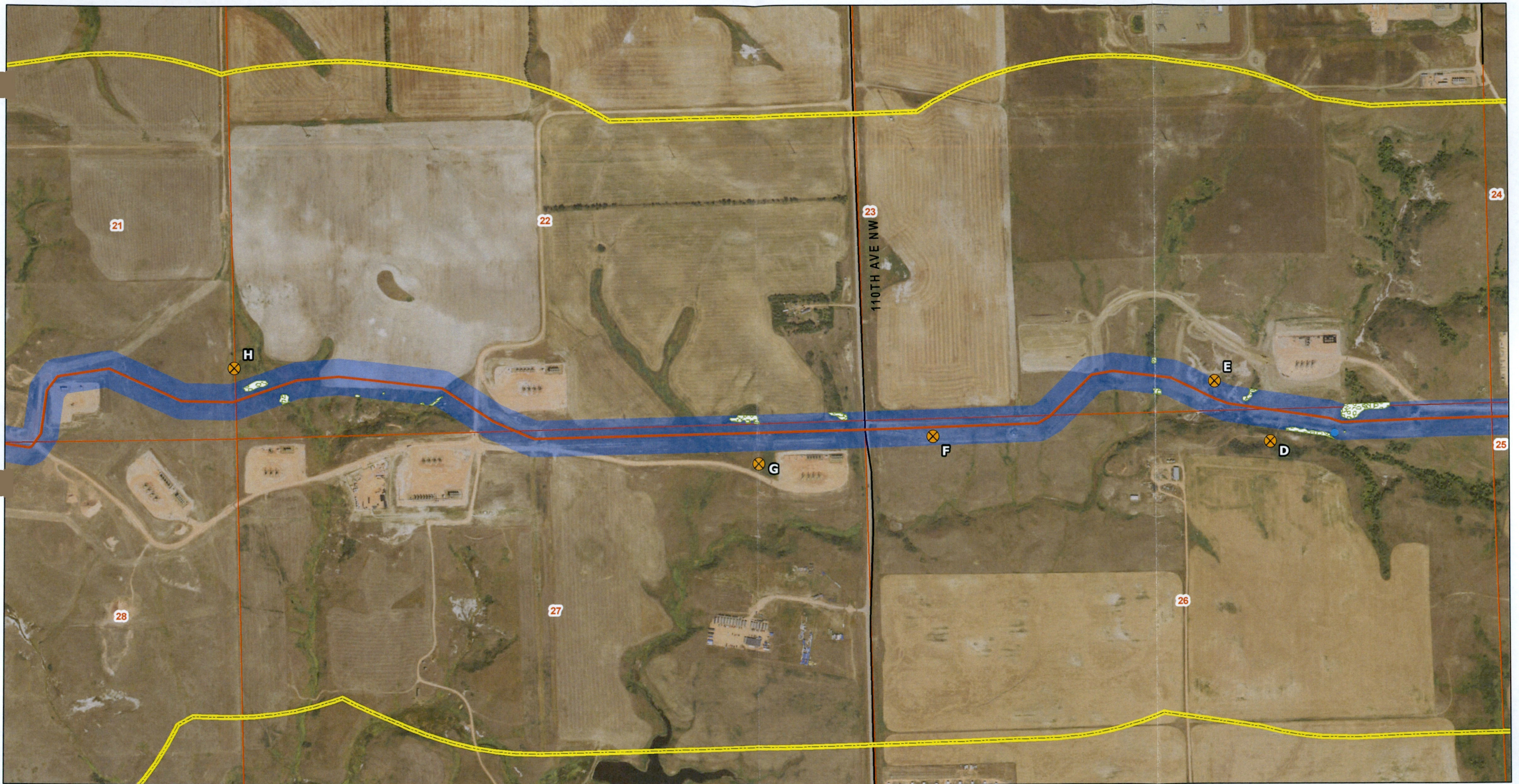


Figure 1.A
T. 150N, R. 96W & R. 95W
McKenzie County, North Dakota





Johnson's Corner to Wilson Station

- | | | | | |
|-----------------|---------------------------------|---------------------------|---------------------------|--------------------|
| ★ Facility | ⊗ Potential Area of Instability | ▬ Highway | ▨ ND Trust Lands | ▭ Section Boundary |
| ■ Block Valve | — Non-Constructed Pipeline | — Roads | ▨ National Grasslands | |
| ● Wetlands | — Constructed Pipeline | ■ 300ft Pipeline Corridor | ▨ Woody Vegetation | |
| ● Noxious Weeds | — Named Streams | ▭ 1mile Study Area | ▭ Township/Range Boundary | |

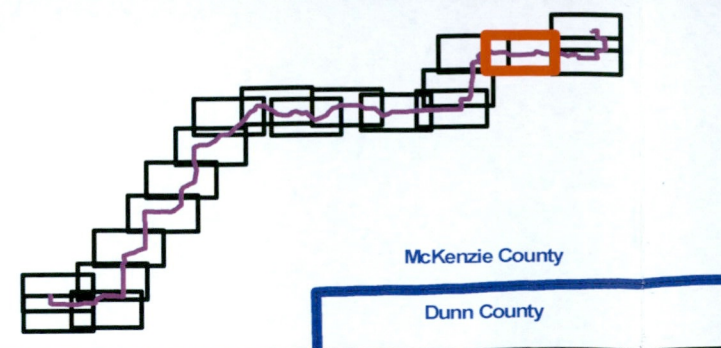
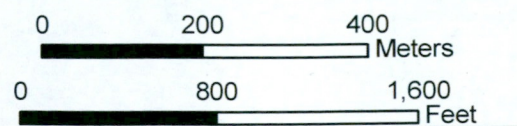


Figure 1.A
T. 150N, R. 96W
McKenzie County, North Dakota





Johnson's Corner to Wilson Station

- | | | | | |
|-----------------|---------------------------------|---------------------------|---------------------------|--------------------|
| ★ Facility | ⊗ Potential Area of Instability | ▬ Highway | ▨ ND Trust Lands | ▭ Section Boundary |
| ■ Block Valve | — Non-Constructed Pipeline | — Roads | ▨ National Grasslands | N
↑ |
| ● Wetlands | — Constructed Pipeline | ■ 300ft Pipeline Corridor | ▨ Woody Vegetation | |
| ● Noxious Weeds | — Named Streams | ▭ 1mile Study Area | ▭ Township/Range Boundary | |

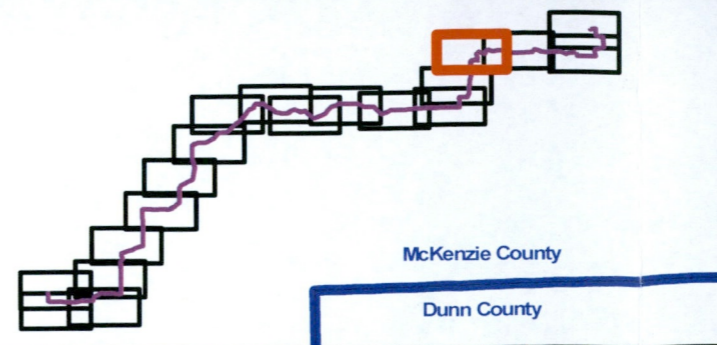
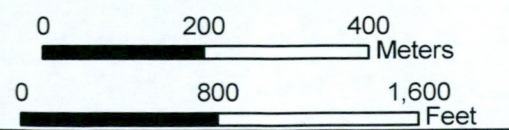
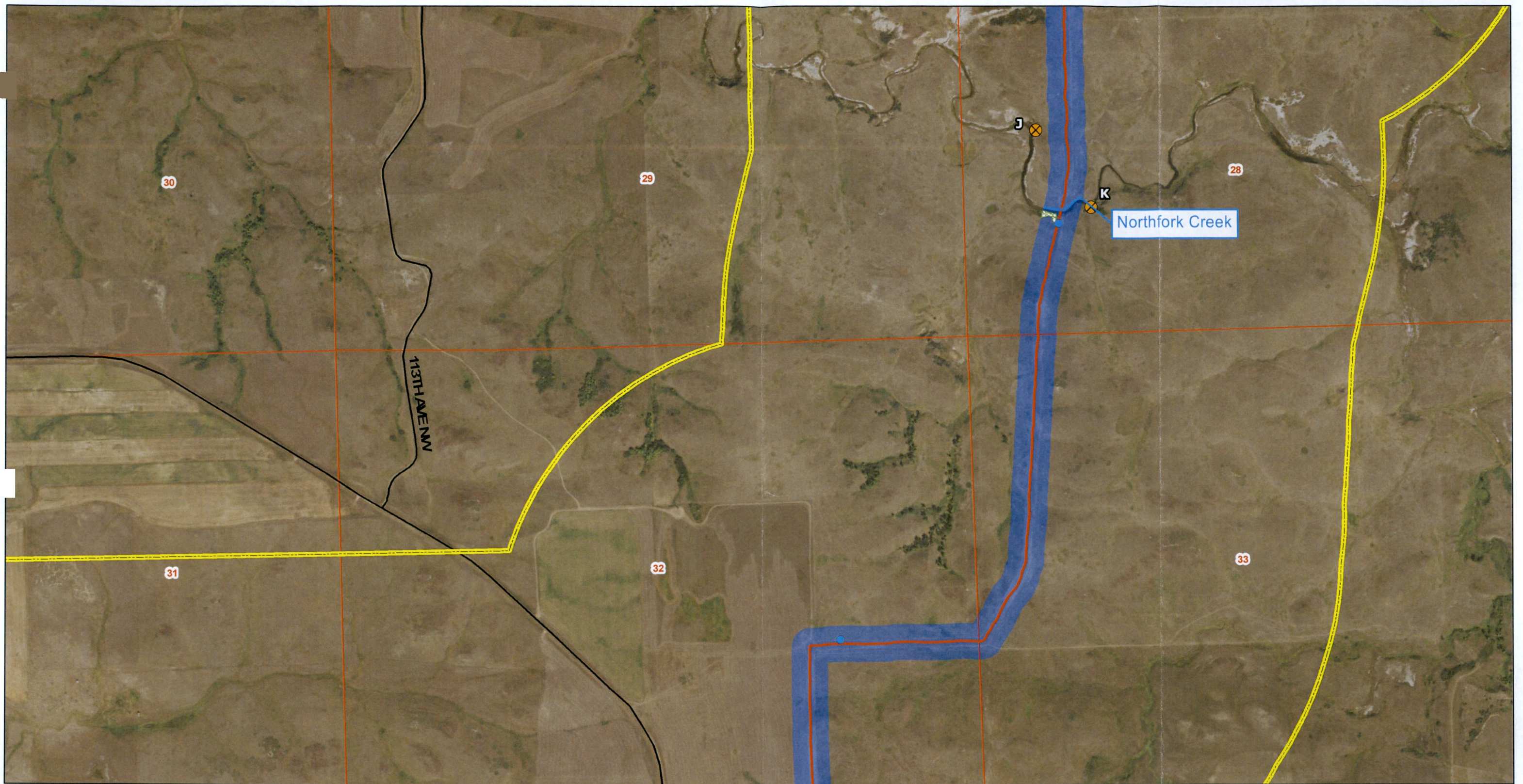


Figure 1.A
T. 150N, R. 96W
McKenzie County, North Dakota





Johnson's Corner to Wilson Station

- | | | | | |
|-----------------|---------------------------------|---------------------------|---------------------------|--------------------|
| ★ Facility | ⊗ Potential Area of Instability | — Highway | ▨ ND Trust Lands | □ Section Boundary |
| ■ Block Valve | — Non-Constructed Pipeline | — Roads | ▨ National Grasslands | |
| ● Wetlands | — Constructed Pipeline | ■ 300ft Pipeline Corridor | ▨ Woody Vegetation | |
| ● Noxious Weeds | — Named Streams | ▭ 1mile Study Area | ▭ Township/Range Boundary | |

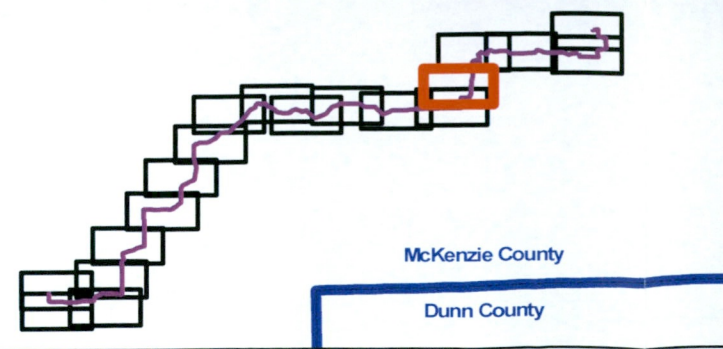
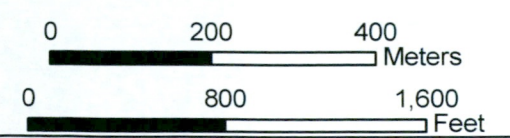
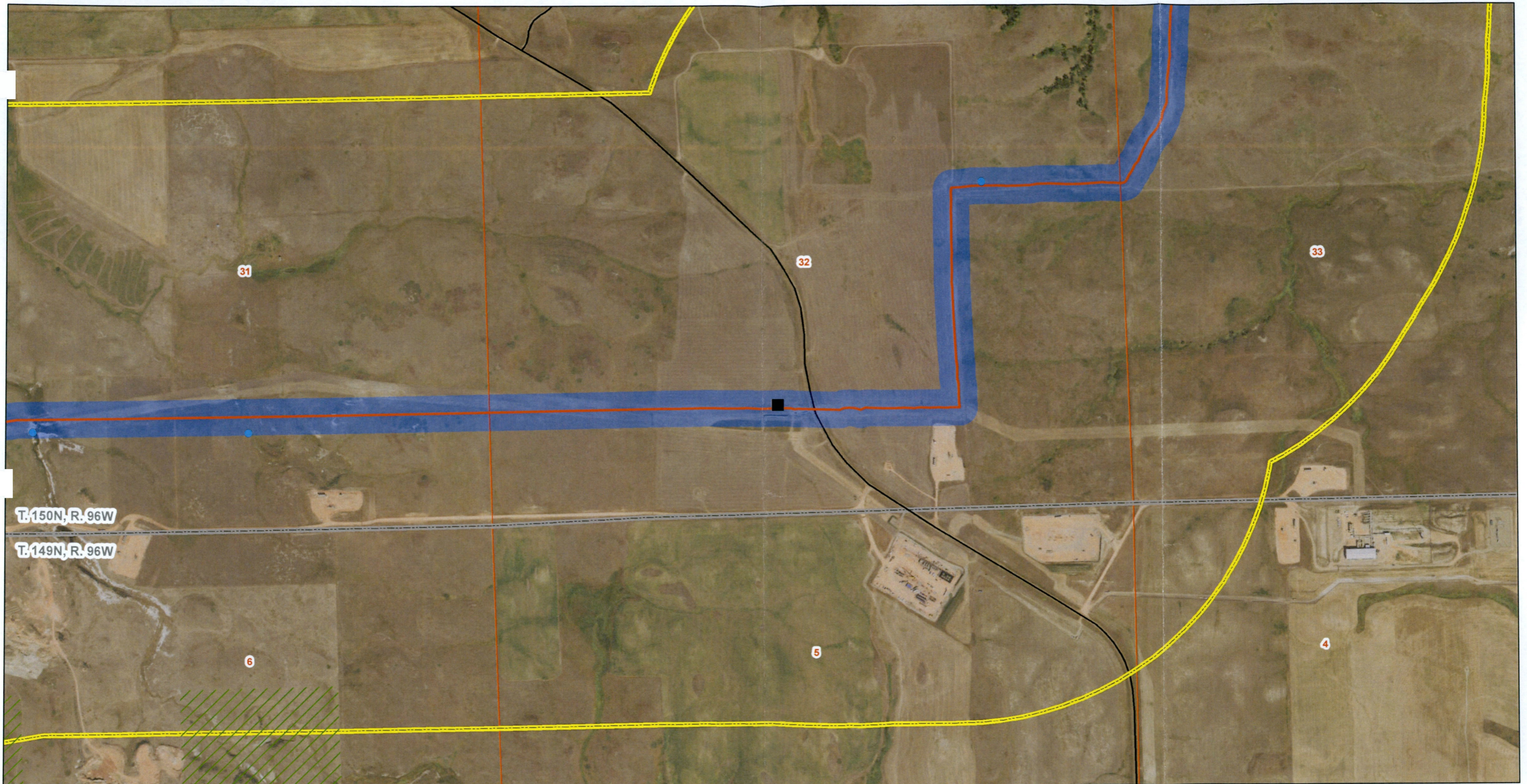


Figure 1.A
T. 150N, R. 96W
McKenzie County, North Dakota





Johnson's Corner to Wilson Station

- | | | | | |
|-----------------|---------------------------------|---------------------------|---------------------------|--------------------|
| ★ Facility | ⊗ Potential Area of Instability | ▬ Highway | ▨ ND Trust Lands | ▭ Section Boundary |
| ■ Block Valve | — Non-Constructed Pipeline | — Roads | ▨ National Grasslands | ⬆ North Arrow |
| ● Wetlands | — Constructed Pipeline | ■ 300ft Pipeline Corridor | ▨ Woody Vegetation | |
| ● Noxious Weeds | — Named Streams | ▭ 1mile Study Area | ▭ Township/Range Boundary | |

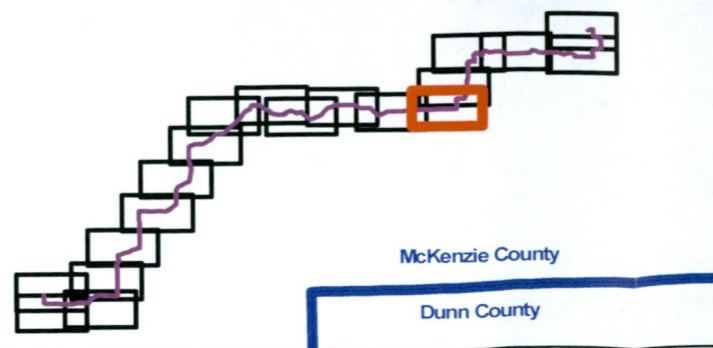
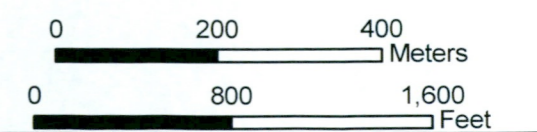
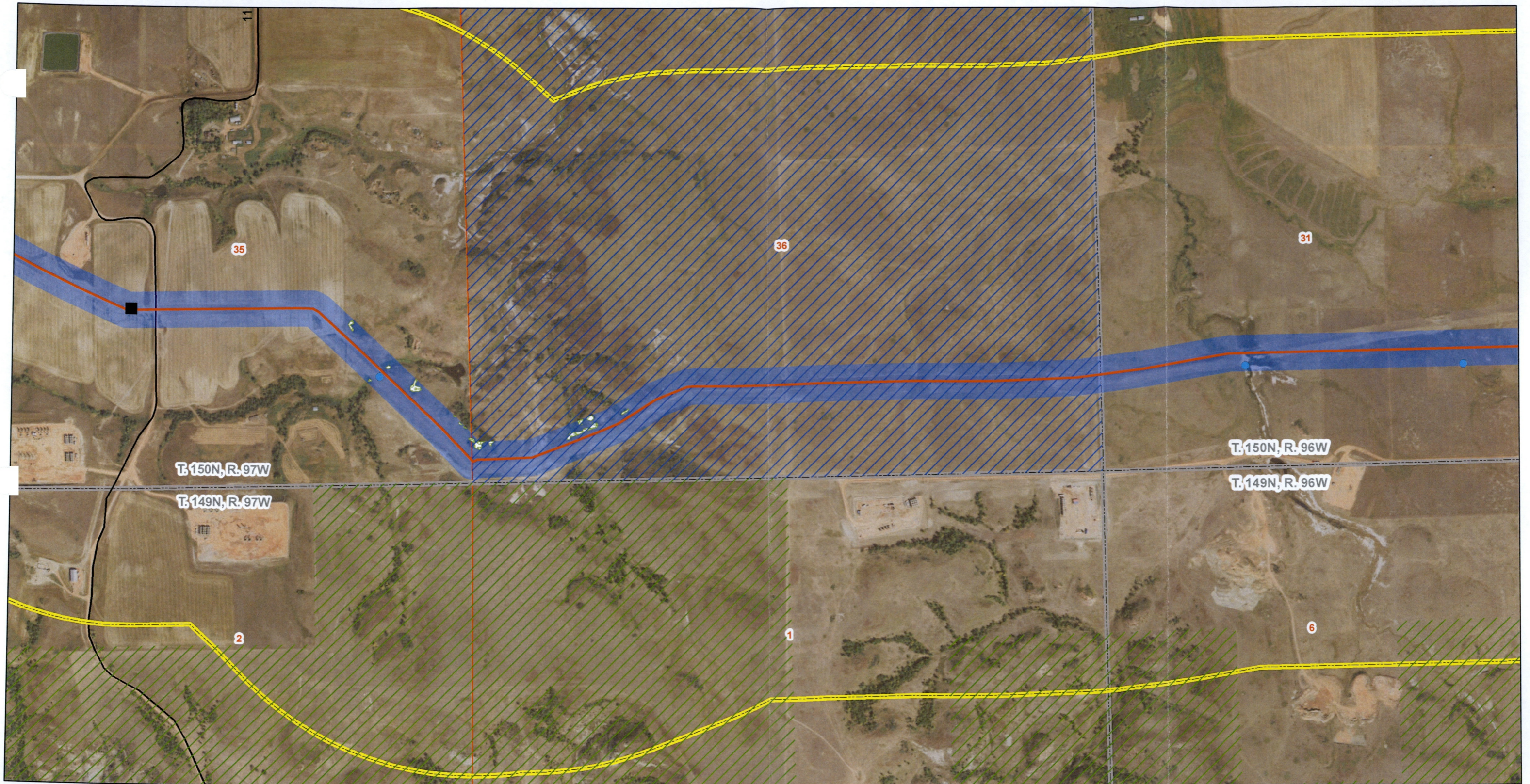


Figure 1.A
T. 150N, R. 96W & T. 149N, R. 96W
McKenzie County, North Dakota





Johnson's Corner to Wilson Station

- | | | | | |
|-----------------|---------------------------------|---------------------------|---------------------------|---------------------------|
| ★ Facility | ⊗ Potential Area of Instability | — Highway | ▨ ND Trust Lands | ▭ Section Boundary |
| ■ Block Valve | — Non-Constructed Pipeline | — Roads | ▨ National Grasslands | ▭ Township/Range Boundary |
| ● Wetlands | — Constructed Pipeline | ▭ 300ft Pipeline Corridor | ▨ Woody Vegetation | |
| ● Noxious Weeds | — Named Streams | ▭ 1mile Study Area | ▭ Township/Range Boundary | |

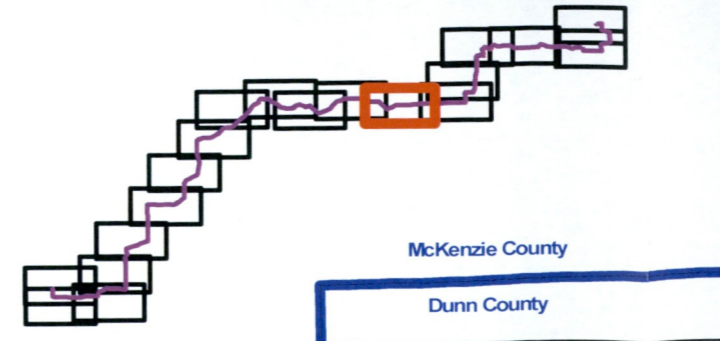
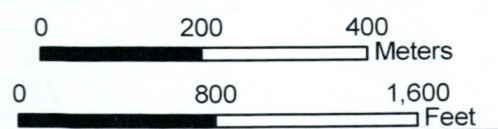
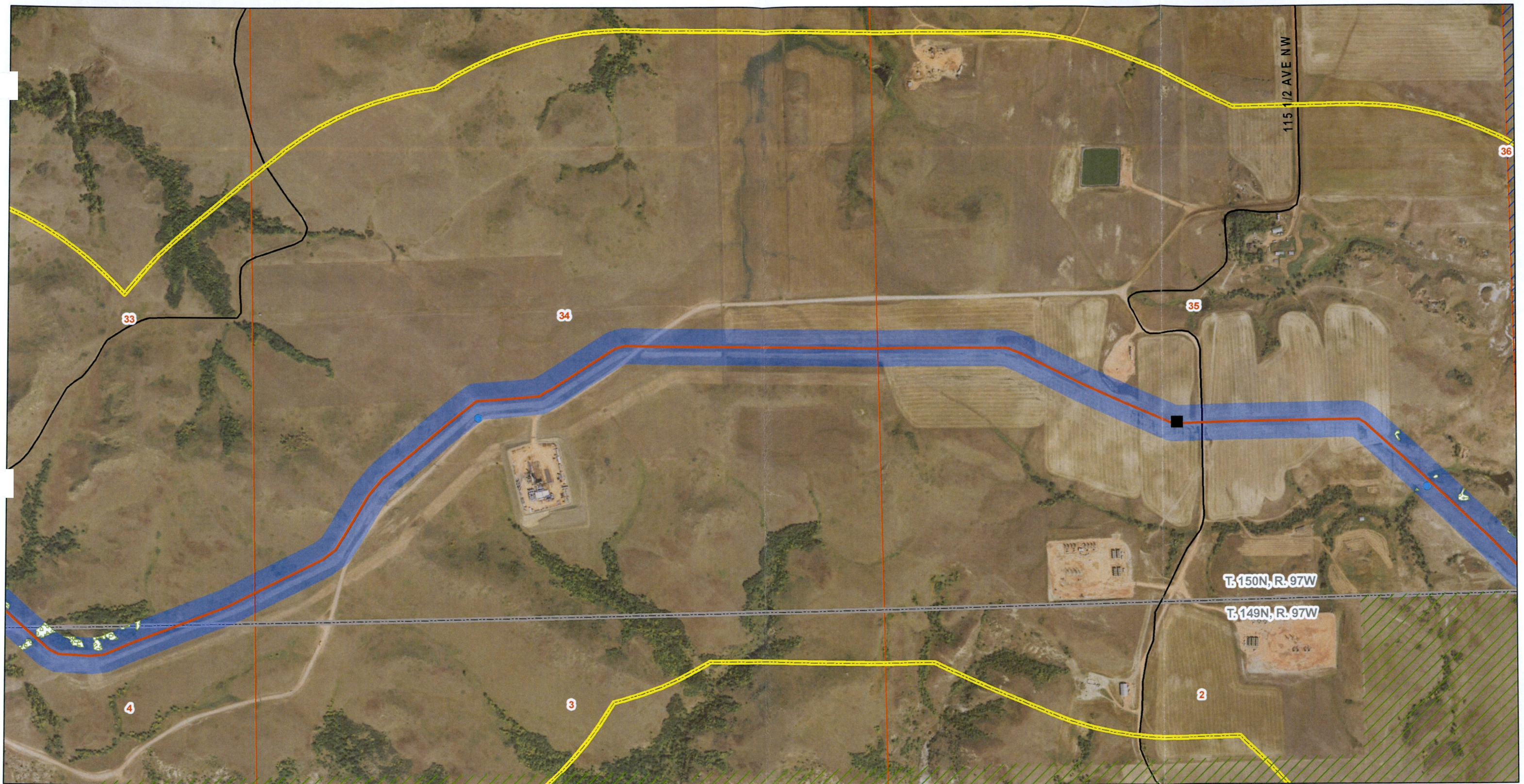


Figure 1.A
 T. 150N, R. 97W & R. 96W
 T. 149N, R. 97W & R. 96W
 McKenzie County, North Dakota
 Page 7 of 19





Johnson's Corner to Wilson Station

- | | | | | |
|-----------------|---------------------------------|---------------------------|---------------------------|--------------------|
| ★ Facility | ⊗ Potential Area of Instability | — Highway | ▨ ND Trust Lands | ▭ Section Boundary |
| ■ Block Valve | — Non-Constructed Pipeline | — Roads | ▨ National Grasslands | |
| ● Wetlands | — Constructed Pipeline | ■ 300ft Pipeline Corridor | ▨ Woody Vegetation | |
| ● Noxious Weeds | — Named Streams | ▭ 1mile Study Area | ▭ Township/Range Boundary | |

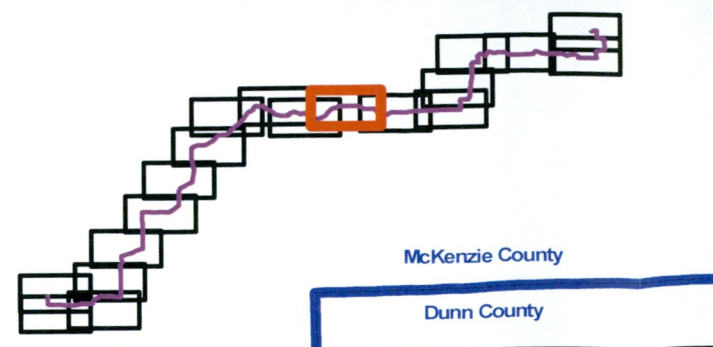
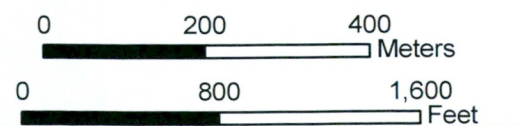


Figure 1.A
 T. 150N, R. 97W
 T. 149N, R. 97W
 McKenzie County, North Dakota
 Page 8 of 19





Johnson's Corner to Wilson Station

- | | | | | |
|-----------------|---------------------------------|---------------------------|---------------------------|--------------------|
| ★ Facility | ⊗ Potential Area of Instability | — Highway | ▨ ND Trust Lands | □ Section Boundary |
| ■ Block Valve | — Non-Constructed Pipeline | — Roads | ▨ National Grasslands | ↑ N |
| ● Wetlands | — Constructed Pipeline | ■ 300ft Pipeline Corridor | ▨ Woody Vegetation | |
| ● Noxious Weeds | — Named Streams | ▭ 1mile Study Area | ▭ Township/Range Boundary | |

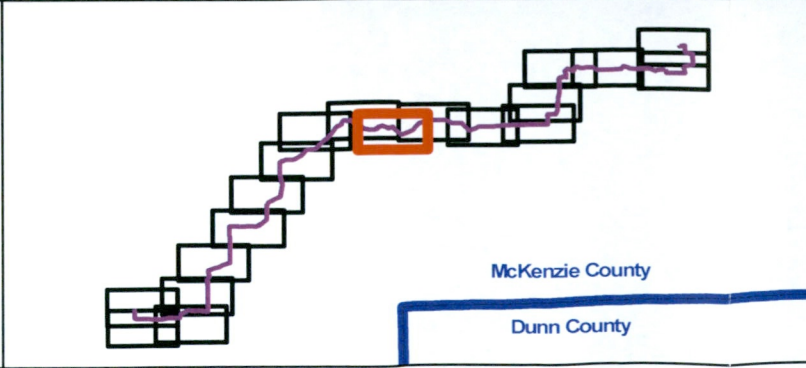
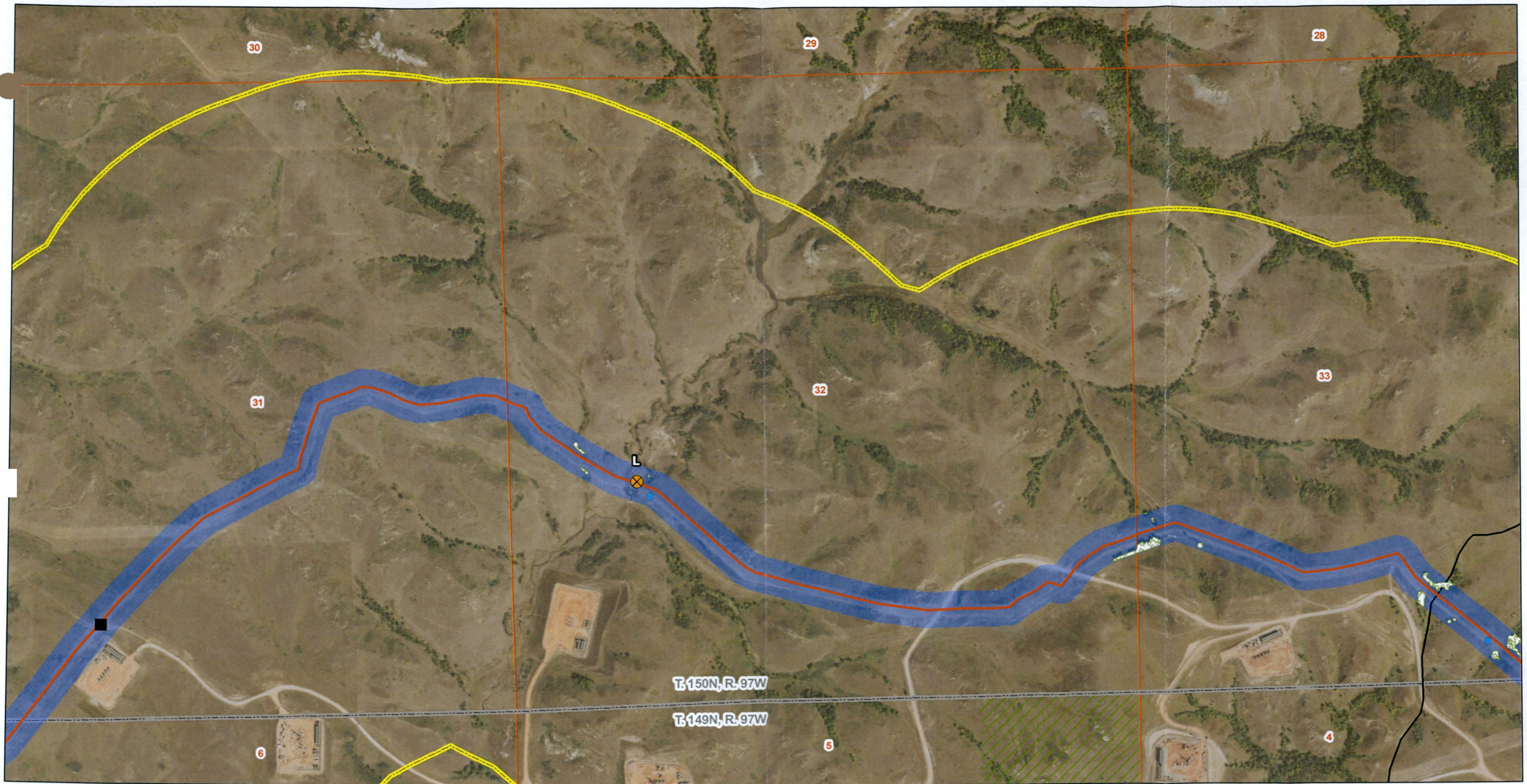


Figure 1.A
 T. 150N, R. 97W
 T. 149N, R. 97W
 McKenzie County, North Dakota
 Page 9 of 19

0 200 400 Meters
 0 800 1,600 Feet



Johnson's Corner to Wilson Station

- | | | | | |
|-----------------|---------------------------------|---------------------------|---------------------------|--------------------|
| ★ Facility | ⊗ Potential Area of Instability | — Highway | ▨ ND Trust Lands | ▭ Section Boundary |
| ■ Block Valve | — Non-Constructed Pipeline | — Roads | ▨ National Grasslands | N
↑ |
| ● Wetlands | — Constructed Pipeline | ■ 300ft Pipeline Corridor | ▨ Woody Vegetation | |
| ● Noxious Weeds | — Named Streams | ▭ 1mile Study Area | ▭ Township/Range Boundary | |

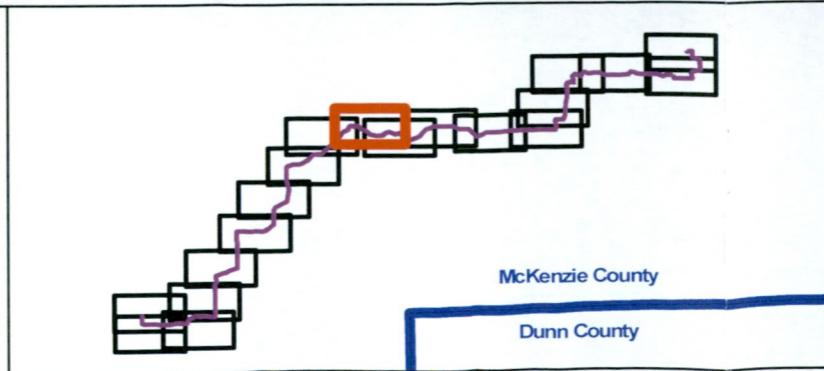
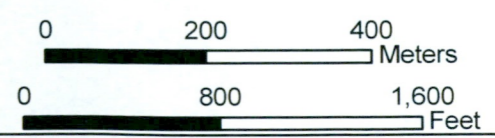
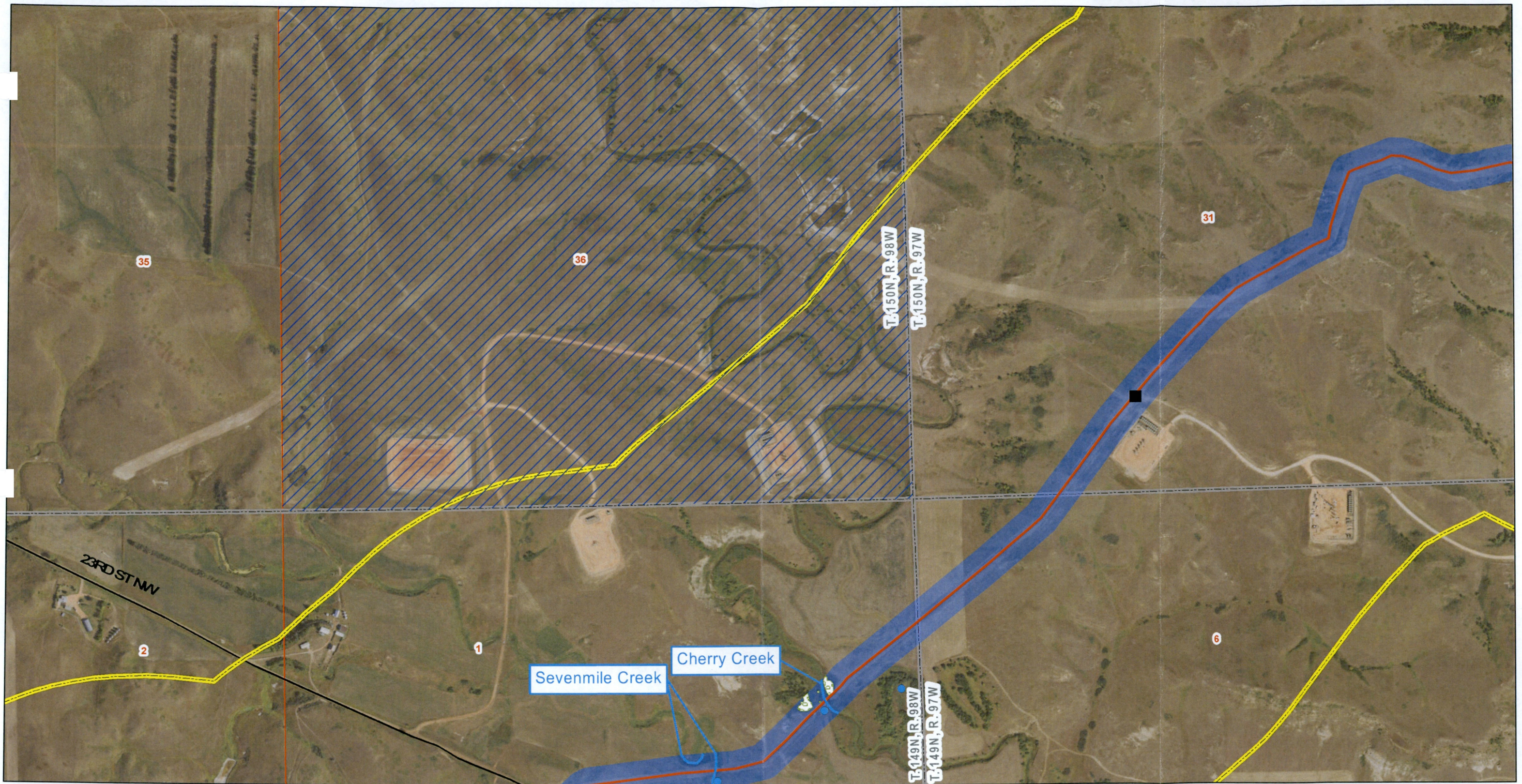
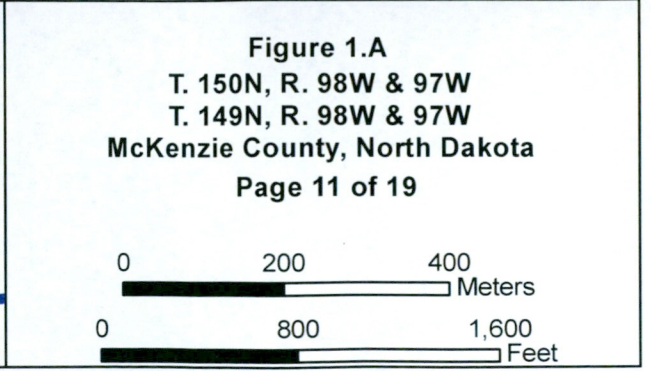
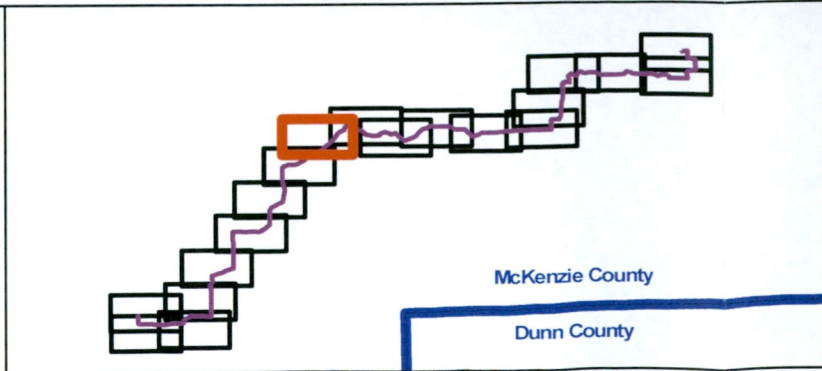
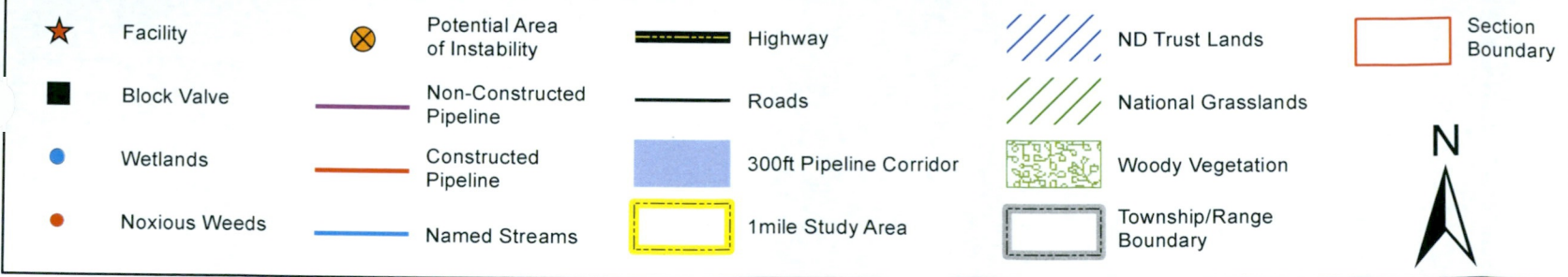


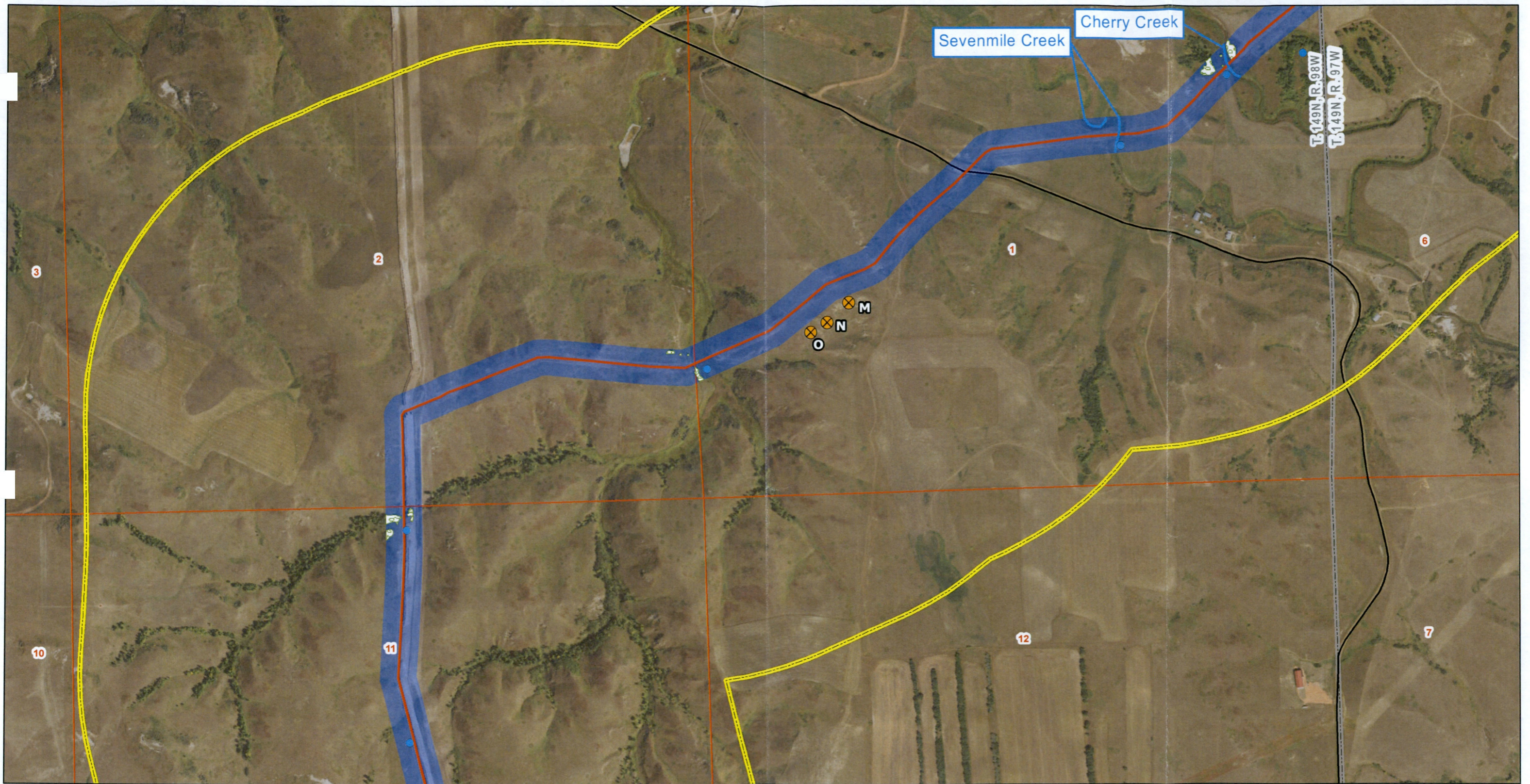
Figure 1.A
 T. 150N, R. 97W
 T. 149N, R. 97W
 McKenzie County, North Dakota
 Page 10 of 19





Johnson's Corner to Wilson Station





Johnson's Corner to Wilson Station

- | | | | | |
|-----------------|---------------------------------|---------------------------|---------------------------|--------------------|
| ★ Facility | ⊗ Potential Area of Instability | — Highway | ▨ ND Trust Lands | □ Section Boundary |
| ■ Block Valve | — Non-Constructed Pipeline | — Roads | ▨ National Grasslands | N
↑ |
| ● Wetlands | — Constructed Pipeline | ■ 300ft Pipeline Corridor | ▨ Woody Vegetation | |
| ● Noxious Weeds | — Named Streams | □ 1mile Study Area | □ Township/Range Boundary | |

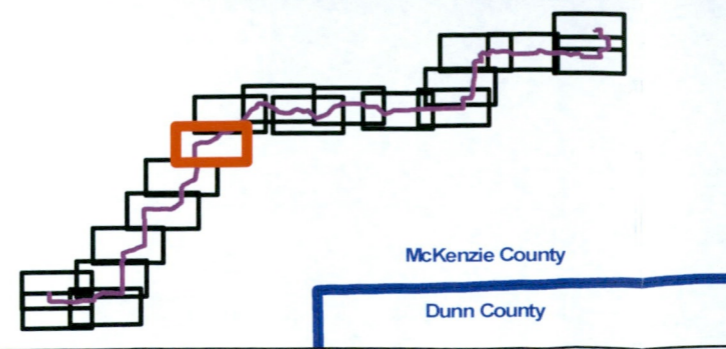
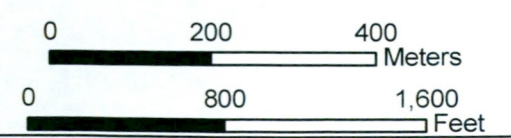


Figure 1.A
T. 149N, R. 98W & 97W
McKenzie County, North Dakota





Johnson's Corner to Wilson Station

- | | | | | |
|-----------------|---------------------------------|---------------------------|---------------------------|--------------------|
| ★ Facility | ⊗ Potential Area of Instability | ▬ Highway | ▨ ND Trust Lands | ▭ Section Boundary |
| ■ Block Valve | — Non-Constructed Pipeline | — Roads | ▨ National Grasslands | N
↑ |
| ● Wetlands | — Constructed Pipeline | ■ 300ft Pipeline Corridor | ▨ Woody Vegetation | |
| ● Noxious Weeds | — Named Streams | ▭ 1mile Study Area | ▭ Township/Range Boundary | |

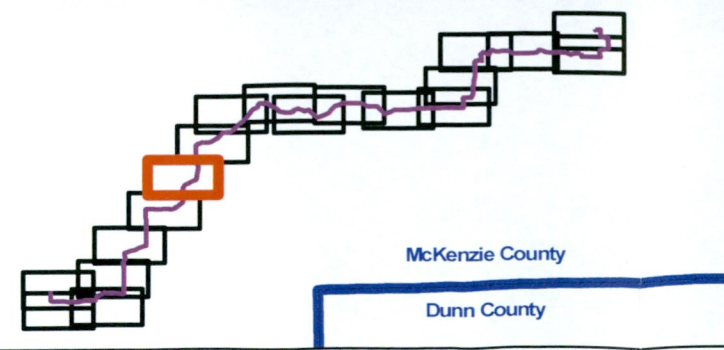
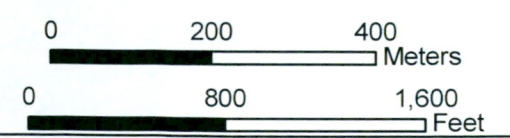


Figure 1.A
T. 149N, R. 98W
McKenzie County, North Dakota





Johnson's Corner to Wilson Station

- | | | | | |
|-----------------|---------------------------------|---------------------------|---------------------------|--------------------|
| ★ Facility | ⊗ Potential Area of Instability | — Highway | ▨ ND Trust Lands | ▭ Section Boundary |
| ■ Block Valve | — Non-Constructed Pipeline | — Roads | ▨ National Grasslands | N |
| ● Wetlands | — Constructed Pipeline | ■ 300ft Pipeline Corridor | ▨ Woody Vegetation | |
| ● Noxious Weeds | — Named Streams | ▭ 1mile Study Area | ▭ Township/Range Boundary | |

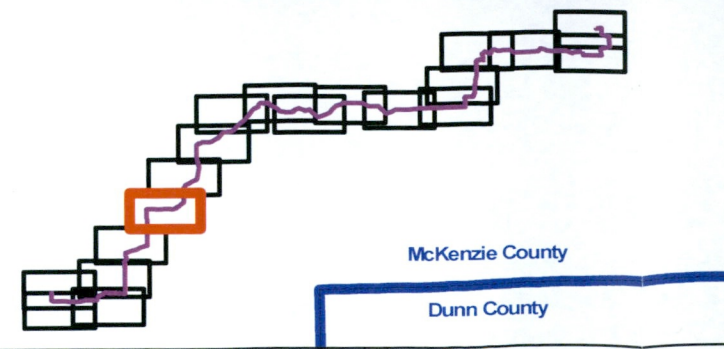
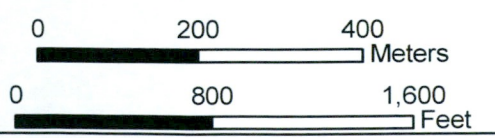


Figure 1.A
T. 149N, R. 98W
McKenzie County, North Dakota





Johnson's Corner to Wilson Station

- | | | | | |
|-----------------|---------------------------------|---------------------------|---------------------------|--------------------|
| ★ Facility | ⊗ Potential Area of Instability | — Highway | ▨ ND Trust Lands | □ Section Boundary |
| ■ Block Valve | — Non-Constructed Pipeline | — Roads | ▨ National Grasslands | N
↑ |
| ● Wetlands | — Constructed Pipeline | ■ 300ft Pipeline Corridor | ▨ Woody Vegetation | |
| ● Noxious Weeds | — Named Streams | ▭ 1mile Study Area | ▭ Township/Range Boundary | |

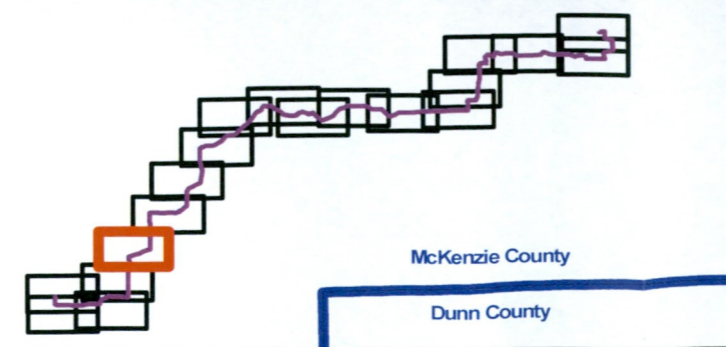
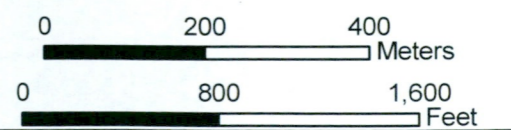
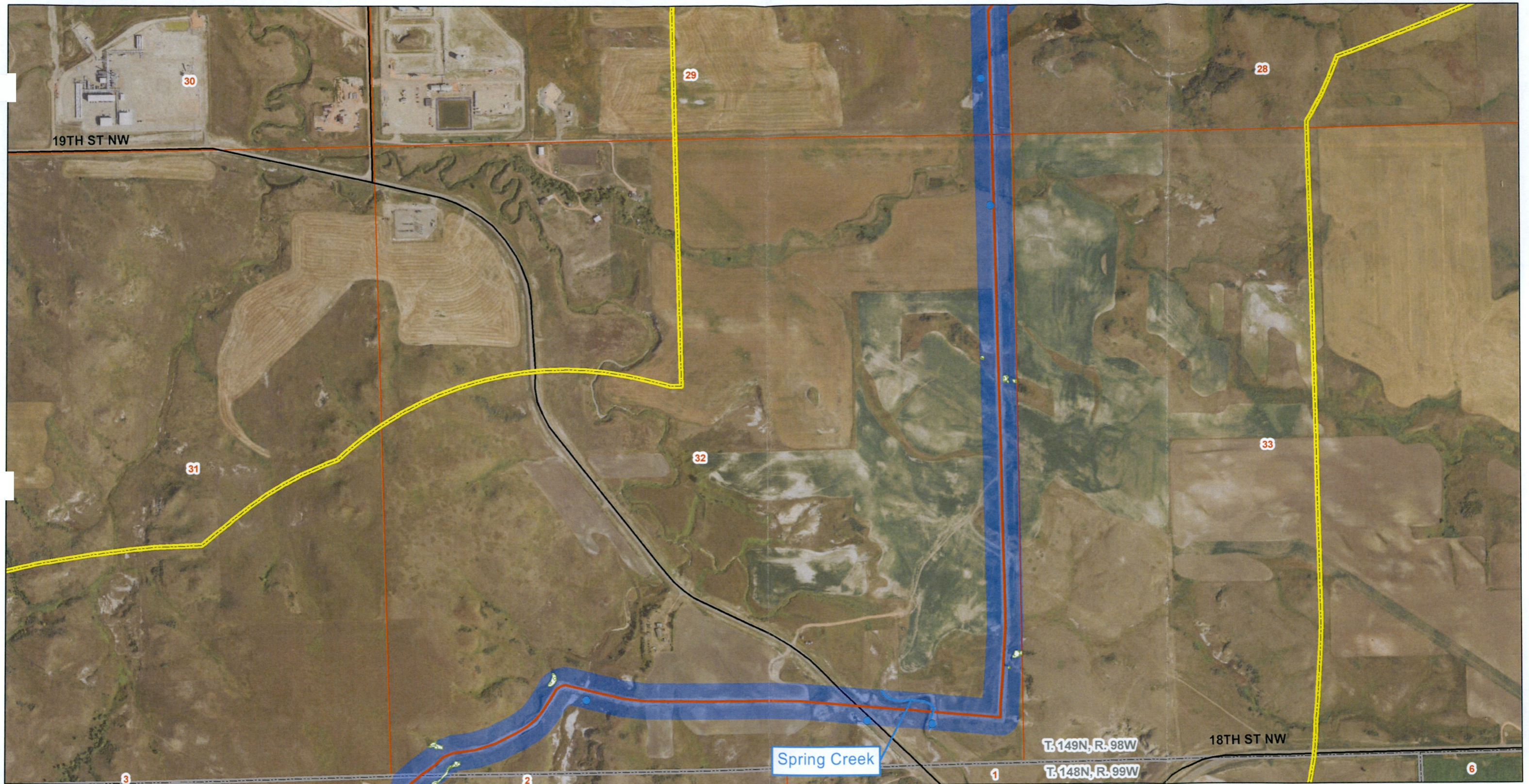


Figure 1.A
T. 149N, R. 98W
McKenzie County, North Dakota





Johnson's Corner to Wilson Station

- | | | | | |
|-----------------|---------------------------------|---------------------------|---------------------------|--------------------|
| ★ Facility | ⊗ Potential Area of Instability | == Highway | ▨ ND Trust Lands | □ Section Boundary |
| ■ Block Valve | — Non-Constructed Pipeline | — Roads | ▨ National Grasslands | N
↑ |
| ● Wetlands | — Constructed Pipeline | ■ 300ft Pipeline Corridor | ▨ Woody Vegetation | |
| ● Noxious Weeds | — Named Streams | □ 1mile Study Area | ▨ Township/Range Boundary | |

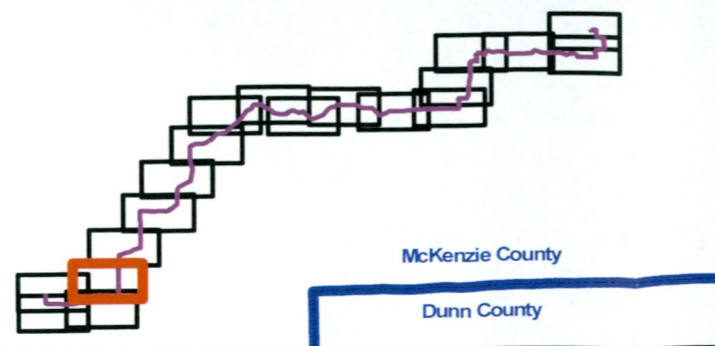
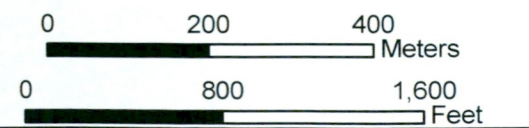
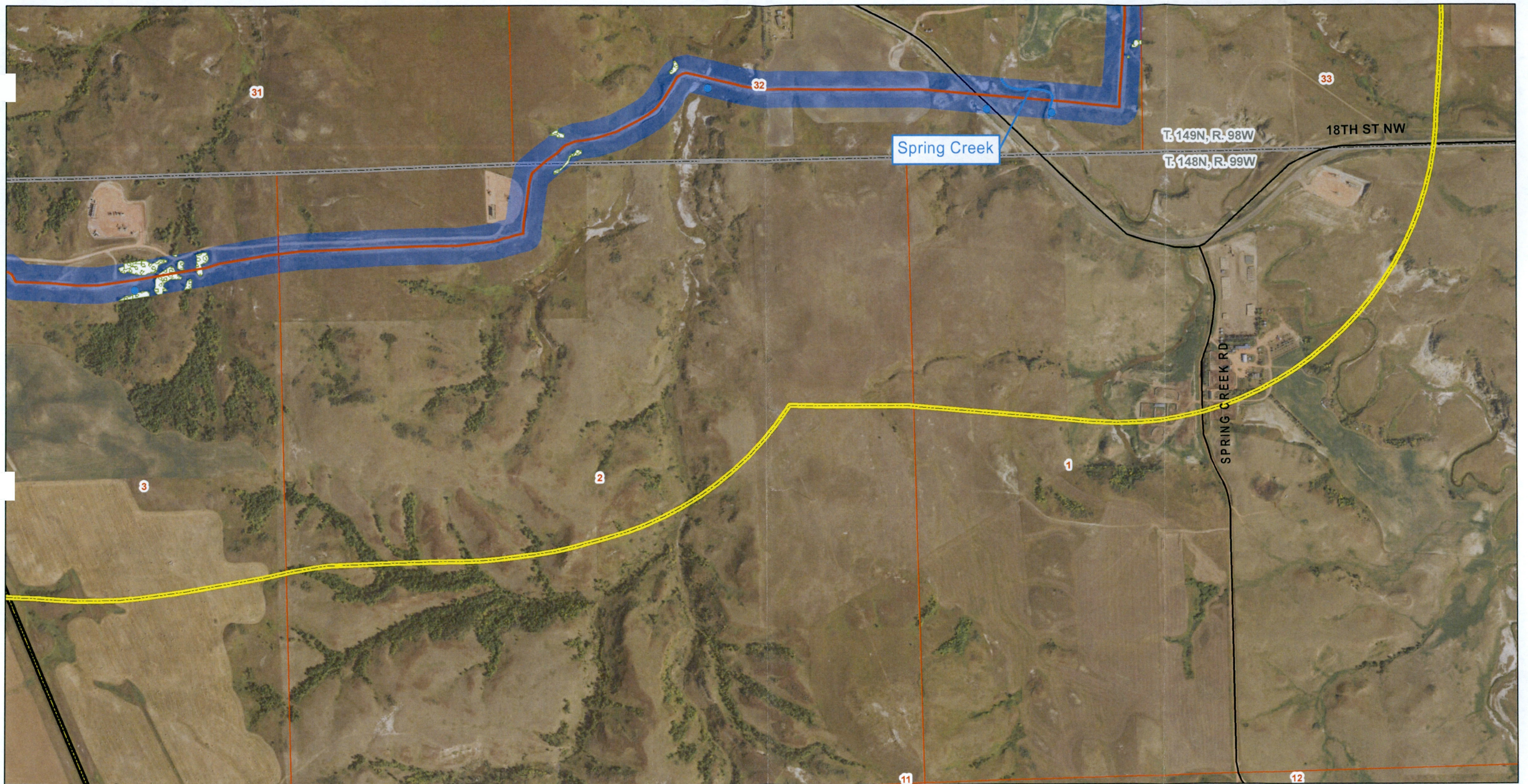


Figure 1.A
 T. 149N, R. 98W
 T. 148N, R. 99W
 McKenzie County, North Dakota
 Page 16 of 19





Johnson's Corner to Wilson Station

- | | | | | |
|-----------------|---------------------------------|---------------------------|---------------------------|--------------------|
| ★ Facility | ⊗ Potential Area of Instability | — Highway | ▨ ND Trust Lands | □ Section Boundary |
| ■ Block Valve | — Non-Constructed Pipeline | — Roads | ▨ National Grasslands | |
| ● Wetlands | — Constructed Pipeline | ■ 300ft Pipeline Corridor | ▨ Woody Vegetation | |
| ● Noxious Weeds | — Named Streams | □ 1mile Study Area | ▨ Township/Range Boundary | |

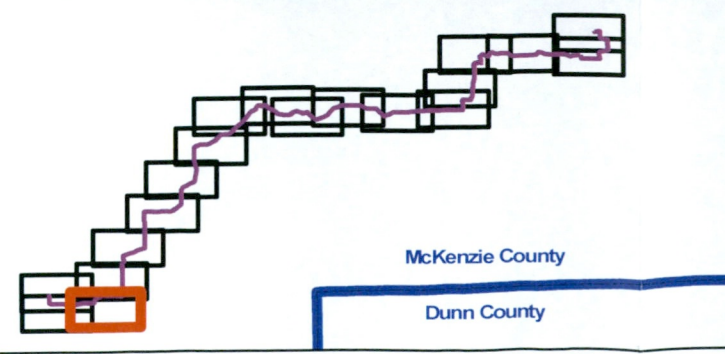
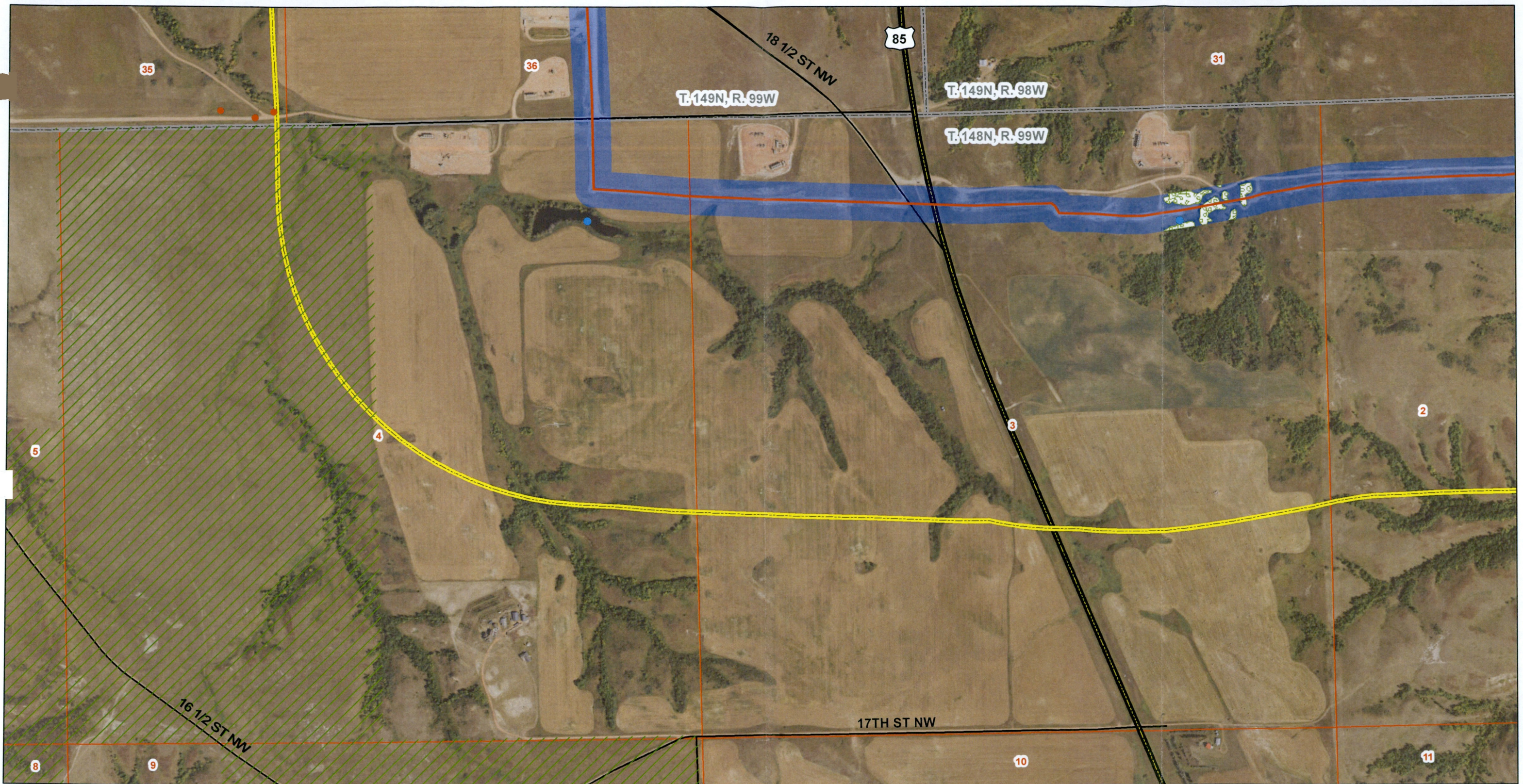


Figure 1.A
 T. 149N, R. 98W
 T. 148N, R. 99W
 McKenzie County, North Dakota
 Page 17 of 19

0 200 400 Meters
 0 800 1,600 Feet



Johnson's Corner to Wilson Station

- | | | | | |
|-----------------|---------------------------------|---------------------------|-----------------------|---------------------------|
| ★ Facility | ⊗ Potential Area of Instability | — Highway | ▨ ND Trust Lands | □ Section Boundary |
| ■ Block Valve | — Non-Constructed Pipeline | — Roads | ▨ National Grasslands | □ Township/Range Boundary |
| ● Wetlands | — Constructed Pipeline | ■ 300ft Pipeline Corridor | ▨ Woody Vegetation | |
| ● Noxious Weeds | — Named Streams | ▭ 1mile Study Area | | |

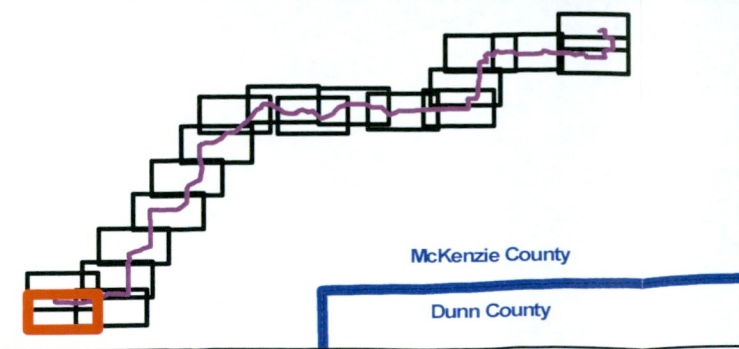
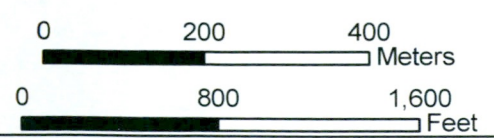
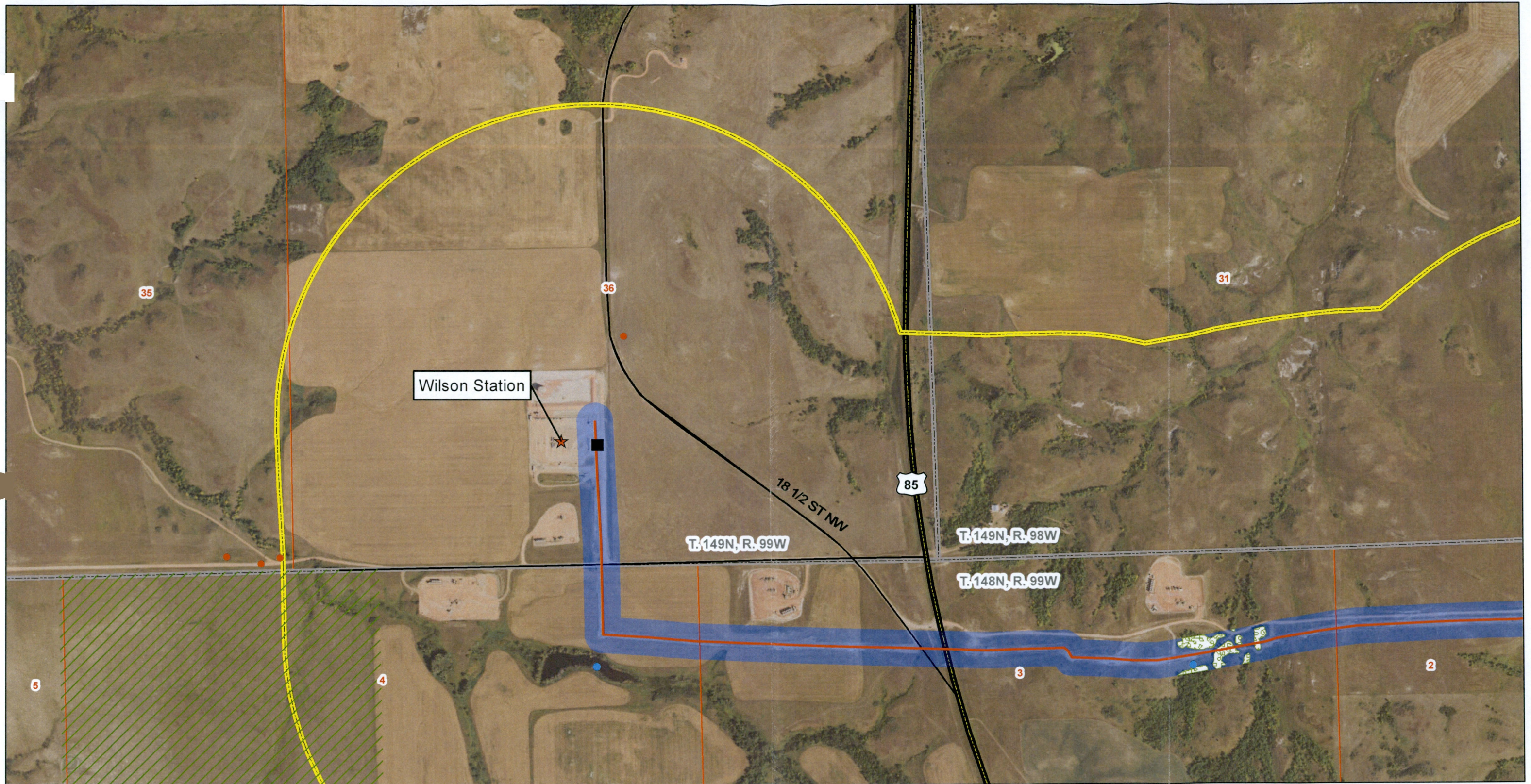


Figure 1.A
 T. 149N, R. 99W & R. 98W
 T. 148N, R. 99W
 McKenzie County, North Dakota
 Page 18 of 19





Johnson's Corner to Wilson Station

- | | | | | |
|-----------------|---------------------------------|---------------------------|---------------------------|--------------------|
| ★ Facility | ⊗ Potential Area of Instability | — Highway | ▨ ND Trust Lands | □ Section Boundary |
| ■ Block Valve | — Non-Constructed Pipeline | — Roads | ▨ National Grasslands | |
| ● Wetlands | — Constructed Pipeline | ■ 300ft Pipeline Corridor | ▨ Woody Vegetation | |
| ● Noxious Weeds | — Named Streams | ▭ 1mile Study Area | ▭ Township/Range Boundary | |

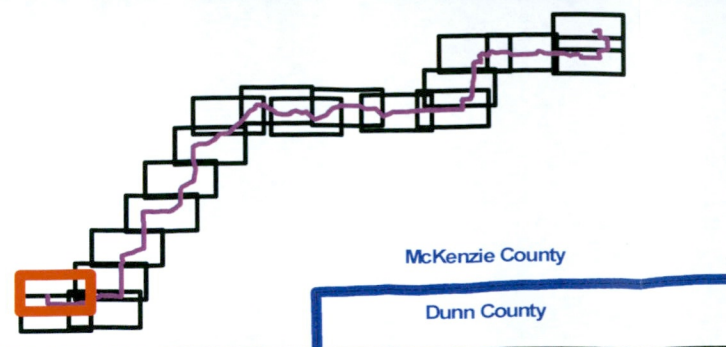


Figure 1.A
 T. 149N, R. 99W & R. 98W
 T. 148N, R. 99W
 McKenzie County, North Dakota
 Page 19 of 19

