

400 North Fourth Street
Bismarck, ND 58501
701-222-7900

May 7, 2021

Executive Secretary
North Dakota Public Service Commission
State Capitol Building
Bismarck, ND 58505

Re: Cost of Gas Adjustment (COG)
Rate 88 and Rate 99
Case No. PU-21-008

In accordance with North Dakota Century Code Section 49-05-05, Montana-Dakota Utilities Co. (Montana-Dakota) electronically submits a Cost of Gas (COG) change pursuant to the terms of Rates 88 and 99. In response to the COVID-19 pandemic, Montana-Dakota has provided an electronic copy only to further reduce the potential spread of the virus.

Montana-Dakota's Rate Summary Sheet (Sheet No. 3) will be submitted in the Compliance Filing in Case No. PU-20-379 reflecting the final distribution rates and the Cost of Gas rates to be effective June 1, 2021. The Company has also submitted a proposal to implement an out of cycle surcharge adjustment to be effective June 1, 2021 in Case No. PU-21-8 and will file a Substitute Rate Summary Sheet (Sheet No. 3) upon Commission approval.

The net effect of this filing, calculated pursuant to the terms of Rate 88, is an increase of \$0.644 per dk for residential customers and firm general customers, an increase of \$0.607 per dk for small and large interruptible customers, an increase of \$0.604 per dk for Air Force interruptible customers, and a decrease of \$0.549 per dk for propane customers from the currently effective rates.

Montana-Dakota purchases gas supplies under a number of contracts and secures transportation service over a number of pipelines for delivery of the natural gas purchased to Montana-Dakota's distribution system to meet the demands of its customers. The commodity cost of natural gas has increased \$0.658 per dk since the March 1, 2021 rates due to an increase in the overall commodity price of gas. There have also been changes in pipeline rates resulting in a decrease in the cost of gas of \$0.027 per dk. In addition, there was a quarterly update of capacity release for an increase of \$0.013 per dk.

Montana-Dakota also purchases propane supplies from various wholesale suppliers for the propane service provided in Hettinger, North Dakota. The cost of propane has decreased since the cost established in the May 2021 PGA filing.

The following Exhibits are provided in support of the COG rates to be effective June 1, 2021:

- Exhibit 2 summarizes the cost of gas adjustment, the surcharge adjustment, and the grain drying margin sharing adjustment calculated pursuant to the terms of Rate 88 that will apply during the month of June 2021.
- Exhibit 3, shows the calculation of the current gas cost adjustment that will be applicable to Montana-Dakota's customers for the month of June 2021 along with an explanation of the reasons for the decrease in the market price of gas. The average cost of gas for firm customers, adjusted for losses, is \$4.729 per dk.
- Exhibit 3a is marked as "Confidential" and contains confidential information regarding gas commodity pricing and is designated as Trade Secret in accordance with the Commission's February 19, 2020, Order in Case No. PU-20-008. Exhibit 3a – Public Copy is included in this filing. Montana-Dakota has submitted a renewal of the Application for Trade Secret Protection to renew the request of confidential treatment of portion of the cost of gas calculation for 2021.
- Exhibit 4 provides a summary of the change in pipeline rates occurring since the last COG filing and a copy of applicable effective pipeline rates along with supporting workpapers.
- Exhibit 5 shows the calculation of the return on storage inventory balances and prepaid demand and commodity balances using the calculation procedure set forth in Rate 88. The overall rate of return of 6.851% applied to the balances was authorized by the Commission in Case No. PU-20-379.
- Exhibit 6 shows the computation of the (over)/under recovered gas cost account balances.
- Exhibit 7 summarizes the cost of gas – propane calculated pursuant to the terms of Rate 99, which apply during the month of June 2021. The net effect of this filing is a decrease of \$0.549 per dk for all customers from the currently effective rates as a result of the annual change in the surcharge and a change in cost of propane from that established in the May 2021 PGA filing. The average cost of propane for all customers, adjusted for losses, is \$7.685 per dk.

The COG changes, calculated in accordance with Rate 88 and Rate 99, will amount to an increase of approximately \$185,900 for natural gas customers and a decrease of approximately \$600 for propane customers during the month of June 2021. All Montana-Dakota's retail gas customers in North Dakota may be affected by this proposal. There were 111,496 natural gas customers and 334 propane customers in North Dakota as of April 30, 2021.

Please refer all inquiries regarding this filing to:

Mr. Travis R. Jacobson
Director of Regulatory Affairs
Montana-Dakota Utilities Co.
400 North Fourth Street
Bismarck, ND 58501

Also, please send copies of all written inquiries, correspondence and pleadings to:

Ms. Allison Mann
Attorney
MDU Resources Group, Inc.
P. O. Box 5650
Bismarck, ND 58506-5650

Montana-Dakota submitted a check on March 3, 2021 to the North Dakota Public Service Commission for \$600 pursuant to the requirements of North Dakota Century Code Section 49-05-05. This payment will cover the filing fee associated with the monthly COG filings.

Montana-Dakota respectfully requests this electronic filing, in lieu of an original and two (2) physical copies, be accepted as being in full compliance with the filing requirements of this Commission.

If you have any questions regarding this filing, please contact me at (701) 222-7855 or travis.jacobson@mdu.com.

Sincerely,

/s/ Travis R. Jacobson

Travis R. Jacobson
Director of Regulatory Affairs

Attachment
cc: A. Mann

RATE SUMMARY SHEET

(Included in Compliance Filing
for Case No. PU-20-379
submitted on May 7, 2021)

MONTANA-DAKOTA UTILITIES CO.
COST OF GAS TARIFF SHEET
NORTH DAKOTA GAS
EFFECTIVE JUNE 2021

	Firm			Small & Large Interruptible	Air Force Interruptible
	Residential & General Service	Optional Seasonal	Contracted Demand		
<u>Gas Cost Adjustment:</u>					
Gas Cost Level (Exhibit 3)	\$4.729	\$3.238	\$3.238	\$3.379	\$3.364
Prior Filed Gas Cost (Effective 3/1/2021)	4.085	4.210	2.633	2.772	2.760
Current Gas Cost Adjustment	\$0.644	(\$0.972)	\$0.605	\$0.607	\$0.604
<u>Surcharge Adjustment:</u>					
Current Adjustment	\$0.000	\$0.000	\$0.000	\$0.000	\$0.000
Prior Filed Adjustment	0.000	0.000	0.000	0.000	0.000
Change in Surcharge Adjustment	\$0.000	\$0.000	\$0.000	\$0.000	\$0.000
Gas Cost Level	\$4.729	\$3.238	\$3.238	\$3.379	\$3.364
Plus: Surcharge	0.000	0.000	0.000	0.000	0.000
Total Gas Cost Level in Tariff Rates	<u>\$4.729</u>	<u>\$3.238</u>	<u>\$3.238</u>	<u>\$3.379</u>	<u>\$3.364</u>
<u>Grain Drying Margin Sharing</u>					
Current Adjustment	(\$0.031)	(\$0.031)	(\$0.031)	\$0.000	\$0.000
Prior Filed Gas Cost	(0.031)	(0.031)	(0.031)	0.000	0.000
Change in Grain Drying Sharing Margin	\$0.000	\$0.000	\$0.000	\$0.000	\$0.000
Total Cost of Gas Billed	<u>\$4.698</u>	<u>\$3.207</u>	<u>\$3.207</u>	<u>\$3.379</u>	<u>\$3.364</u>
Net Increase (Decrease) in Gas Costs	<u>\$0.644</u>	<u>(\$0.972)</u>	<u>\$0.605</u>	<u>\$0.607</u>	<u>\$0.604</u>

**MONTANA-DAKOTA UTILITIES CO.
CURRENT GAS COST ADJUSTMENT - NORTH DAKOTA
RESIDENTIAL AND GENERAL SERVICE
EFFECTIVE JUNE 2021**

	<u>Amount</u>
Total Gas Costs 1/	\$76,967,814
Dk Requirements - Firm 2/	16,349,241
Average Cost of Gas per dk	\$4.708
Average Cost of Gas as Adjusted for Losses @ 99.55%	4.729
Less: Gas Cost Level in Rates 3/	4.085
Current Gas Cost Adjustment	\$0.644

- 1/ Includes all pipeline demand and commodity charges, see Exhibit 3a, page 1. See Exhibit 4 for currently effective pipeline rates. Also includes a return on prepaid demand, commodity and cycle storage balances as shown on Exhibit 5.
- 2/ Normalized dk sales for the twelve months ended March 31, 2021, adjusted for losses at .45%.
- 3/ Gas Cost Level in Current Tariff Rates Case No. PU-21-008 effective March 1, 2021:

Cost of Purchased Gas	\$4.067
Adjustment for Distribution Losses	99.55%
Gas Cost Level in Base Tariff Rates	\$4.085

**MONTANA-DAKOTA UTILITIES CO.
CURRENT GAS COST ADJUSTMENT - NORTH DAKOTA
NORTH DAKOTA - OPTIONAL SEASONAL - RATE 72
EFFECTIVE JUNE 2021**

	<u>Amount</u>
Total Gas Costs 1/	\$76,967,814
Less: Annual MDDQ Costs (Excludes Storage Capacity Reservation)	<u>24,275,289</u>
Total Gas Costs excluding MDDQ	\$52,692,525
Firm Service Requirements 1/	16,349,241
Other Gas Costs per Dk (excluding MDDQ)	\$3.223
<u>Summer - June - September</u>	
Summer Seasonal Rate, adjusted for losses 2/	3.238
Less: Gas Cost Level in Rates 3/	<u>4.210</u>
Current Gas Cost Adjustment	<u><u>(\$0.972)</u></u>

1/ Exhibit 3, page 1.

2/ Loss factor of 0.45%.

3/ Gas Cost Level in Current Tariff Rates Case No. PU-21-008 effective March 1, 2021:

	<u>Winter</u>
Cost of Purchased Gas	\$4.191
Adjustment for Distribution Losses	99.55%
Gas Cost Level in Base Tariff Rates	\$4.210

**MONTANA-DAKOTA UTILITIES CO.
CURRENT GAS COST ADJUSTMENT - NORTH DAKOTA
FIRM GENERAL CONTRACTED DEMAND
EFFECTIVE JUNE 2021**

<u>Cost of Gas</u>	<u>Amount</u>
Total Gas Costs, Excluding Capacity 1/	\$52,692,525
Residential and General Service dk Requirements 2/	16,349,241
Average Cost of Gas per dk	\$3.223
Average Cost of Gas as Adjusted for Losses @ 99.55%	3.238
Less: Gas Cost Level in Rates 3/	<u>2.633</u>
Current Gas Cost Adjustment	<u><u>\$0.605</u></u>
<u>Capacity Charge</u>	
Current Monthly Capacity Charge 4/	\$10.74
Prior Filed Capacity Charge 3/	<u>10.63</u>
Current Capacity Charge Adjustment	<u><u>\$0.11</u></u>

- 1/ Includes all pipeline demand and commodity charges, see Exhibit 3a, page 1. See Exhibit 4 for currently effective pipeline rates. Also includes a return on prepaid demand, commodity and cycle storage balances as shown on Exhibit 5.
- 2/ Normalized dk sales for the twelve months ended March 31, 2021, adjusted for losses at .45%.
- 3/ Gas Cost Level in Current Tariff Rates Case No. PU-21-008 effective March 1, 2021:

Cost of Purchased Gas	\$2.621
Adjustment for Distribution Losses	0.9955
Gas Cost Level in Base Tariff Rates	\$2.633
Monthly Capacity Charge	\$10.63

- 4/ Annual MDDQ Costs divided by contracted capacity.

**MONTANA-DAKOTA UTILITIES CO.
CURRENT GAS COST ADJUSTMENT - NORTH DAKOTA
INTERRUPTIBLE
EFFECTIVE JUNE 2021**

	<u>Amount</u>
Total Gas Costs 1/	\$21,099,706
Dk Requirements - Interruptible	6,271,847
Average Cost of Gas per dk	\$3.364
Average Cost of Gas as Adjusted for Losses @ 99.55%	3.379
Less: Gas Cost Level in Rates 2/	<u>2.772</u>
Current Gas Cost Adjustment	<u><u>\$0.607</u></u>

1/ Includes all pipeline demand and commodity charges, see Exhibit 3a, page 1. See Exhibit 4 for currently effective pipeline rates. Also includes a return on prepaid demand, commodity and cycle storage balances as shown on Exhibit 5.

2/ Gas Cost Level in Current Tariff Rates Case No. PU-21-008 effective March 1, 2021:

Cost of Purchased Gas	\$2.760
Adjustment for Distribution Losses	99.55%
Gas Cost Level in Base Tariff Rates	\$2.772

MONTANA-DAKOTA UTILITIES CO.
CURRENT GAS COST ADJUSTMENT - NORTH DAKOTA
AIR FORCE INTERRUPTIBLE
EFFECTIVE JUNE 2021

	<u>Amount</u>
Total Gas Costs 1/	\$1,334,005
Dk Requirements - Air Force Interruptible	396,550
Average Cost of Gas per dk	\$3.364
Less: Gas Cost Level in Rates 2/	<u>2.760</u>
Current Gas Cost Adjustment	<u><u>\$0.604</u></u>

1/ Includes all pipeline demand and commodity charges, see Exhibit 3a, page 1. See Exhibit 4 for currently effective pipeline rates. Also includes a return on prepaid demand, commodity and cycle storage balances as shown on Exhibit 5.

2/ Gas Cost Level in Current Tariff Rates Case No. PU-21-008 effective March 1, 2021:

Cost of Purchased Gas	\$2.760
-----------------------	---------

**MONTANA-DAKOTA UTILITIES CO.
SUMMARY OF FIRM DK DELIVERIES, CAPACITY AND
CALCULATION OF INTERRUPTIBLE DEMAND
EFFECTIVE JUNE 2021**

	Normalized Firm Dk Deliveries 1/	Percent Firm
Montana	9,826,225	27.584580%
North Dakota	16,349,241	45.896258%
South Dakota	6,876,204	19.303161%
Wyoming	2,570,496	7.216001%
Total	35,622,166	100.000000%

	Total Capacity 2/	%
Montana	123,768	29.154261%
North Dakota	188,353	44.367627%
South Dakota	83,700	19.716014%
Wyoming	28,707	6.762098%
Total	424,528	100.000000%

INTERRUPTIBLE

	Dk volumes	100% Load Factor MDDQ
Montana	3,716,416 3/	10,182
North Dakota	6,271,847 4/	17,183
ND AFB	396,550 5/	1,086
South Dakota	1,731,859 6/	4,745
Wyoming	2,737,179 7/	7,499
Total	14,853,851	40,695

- 1/ Normalized firm sales volumes for the twelve months ended March 31, 2021, adjusted for losses.
2/ Required capacity reservation.
3/ Reflects level of interruptible dk volumes included in Docket No. 2020.06.076
4/ Reflects level of interruptible dk volumes included in Case No. PU-20-379, excluding the Air Force.
5/ Reflects level of interruptible dk for Minot Air Force Base in Case No. PU-20-379.
6/ Reflects level of interruptible dk volumes included in Docket No. NG15-005.
7/ Reflects level of interruptible dk volumes included in Docket No. 30013-351-GR-19.

	Loss Factors	Inverse
Montana	0.72%	99.28%
North Dakota	0.45%	99.55%
South Dakota	1.00%	99.00%
Wyoming	0.68%	99.32%

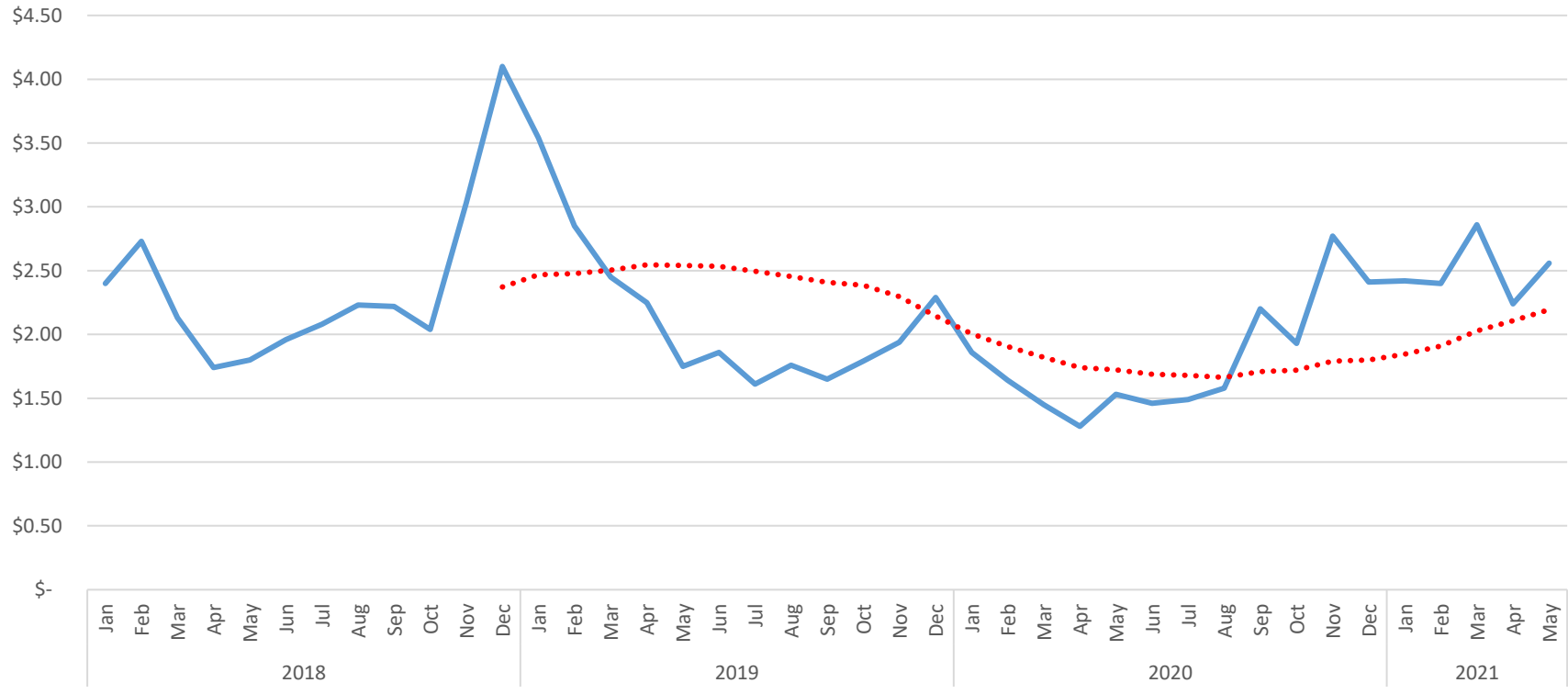
**Montana-Dakota Utilities Co.
Market Conditions for Regional Natural Gas
June 2021**

The established monthly price for May 2021 Rocky Mountain CIG Index is expected to decrease by \$0.24/MMBTU to \$2.32/MMBTU in June from \$2.56/MMBTU in May 2021. The CIG Rocky Mountain Index is based on a price discovery survey by several natural gas periodicals, including “Inside FERC Gas Market” report and “Gas Daily” by McGraw-Hill Companies, of prices paid by willing sellers and buyers of quantities of gas in that region. That price is reflective of natural gas prices in the Rocky Mountain region and indicative of the supplies Montana-Dakota purchases for its requirements.

The EIA reported nationwide storage levels as of April 23, 2021 at 2.1 percent below the five-year average and 13.7 percent below last year’s balance.

The Department of Energy’s (DOE) Energy Information Administration (EIA) provides various publications on energy issues. The information is available on the DOE website: <http://www.eia.doe.gov>.

CIG Rocky Mountains Index Monthly Gas Prices \$/MMBTU



From Inside FERC Gas Market Report

• • • 12-Month Rolling Average

Annual Averages

2018	\$	2.37
2019	\$	2.15
2020	\$	1.80
2021	\$	2.50

**MONTANA-DAKOTA UTILITIES CO.
CURRENT GAS COST ADJUSTMENT - NORTH DAKOTA
NORTH DAKOTA GAS UTILITY
EFFECTIVE JUNE 2021**

	<u>Requirements</u>	<u>Per Unit Cost</u>	<u>Amount</u>
<u>RESIDENTIAL AND GENERAL SERVICE</u>			
<i>Demand Costs - MDDQ</i>	188,353		
<i>Transportation & Storage Costs - Dk</i>	16,349,241		
<i>Commodity Costs - Dk</i>	16,349,241		
<i>Return on Rate Base</i>			
Demand Charges			\$110,778
Prepaid Commodity Balances			20,653
Cycle Storage Balances			382,933
<i>Total Return</i>			<u>\$514,364</u>
<i>Total Gas Costs - North Dakota only</i>			<u>\$76,967,814</u>
<u>INTERRUPTIBLE</u>			
<i>Demand Costs - MDDQ</i>	17,183		
<i>Transportation & Storage Costs - Dk</i>	6,271,847		
<i>Commodity Costs - Dk</i>	6,271,847		
<i>Return on Rate Base</i>			
Demand Charges			\$10,106
Prepaid Commodity Balances			1,884
Cycle Storage Balances			34,934
<i>Total Return</i>			<u>\$46,924</u>
<i>Total Gas Costs - North Dakota only</i>			<u>\$21,099,706</u>
<u>AIR FORCE INTERRUPTIBLE</u>			
<i>Demand Costs - MDDQ</i>	1,086		
<i>Transportation & Storage Costs - Dk</i>	396,550		
<i>Commodity Costs - Dk</i>	396,550		
<i>Return on Rate Base</i>			
Demand Charges			\$639
Prepaid Commodity Balances			119
Cycle Storage Balances			2,208
<i>Total Return</i>			<u>\$2,966</u>
<i>Total Gas Costs - North Dakota only</i>			<u>\$1,334,005</u>

**MONTANA-DAKOTA UTILITIES CO.
COMPUTATION OF CURRENT GAS COST ADJUSTMENT
TOTAL SYSTEM COSTS
EFFECTIVE JUNE 2021**

	<u>Quantity</u>		<u>Tariff Rate</u>	<u>Amount</u>
System Demand Charges				
Transportation Capacity Reservation (MDDQ)				
WBI FT-1	355,998	dk/Month	\$9.84165	\$42,043,293
WBI FT-1 (Valley Exp)		dk/Month	18.90563	
WBI FT-1 (Black Hills Exp)		dk/Month	12.10920	
WBI (Capacity Release)			1/	
NW T-FTG-1		dk/Month	10.40075	
Black Hills Gas		dk/Month	0.05325	
South Dakota Interstate Pipeline		dk/Month	10.75204	
Supplemental Transportation Capacity Re				
Northern Border et. al.		dk/Month	12.79330	
Viking Gas Transmission		dk/Month	3.80600	
Viking Gas Transmission (Release) 2/		dk/Month	4.61000	
Viking Gas Transmission (Release) 3/		dk/Month	4.01000	
Viking Gas Transmission (Release) 4/		dk/Month	0.61000	
Storage Capacity Reservation (MDDQ)				
WBI FTN-1		dk/Month	0.27069	
WBI FS-1 Capacity Reservation		dk/Month	0.02347	
WBI FS-1 Deliverability Reservation		dk/Month	2.06592	
Total System Contracted Capacity		MDDQ		\$63,794,482
 System Commodity Charges				
Transportation Charges				
WBI FT-1 Commodity		dk	\$0.02587	
WBI FT-1 Commodity (Black Hills Exp)		dk	\$0.00110	
NW T-FTG-1 Commodity		dk	\$0.06440	
Black Hills Gas Commodity		dk	\$0.54000	
Viking Gas Transmission		dk	\$0.01470	
Fuel Charges				
WBI - Fuel - Transportation		dk		-
NW - Fuel - Transportation		dk		
NB - Fuel - Transportation		dk		
WBI - Electric Power		dk	\$0.01180	
Storage Charges				
WBI FS-1 Injection		dk	\$0.01000	
WBI FS-1 Withdrawal		dk	\$0.01000	
WBI - Fuel - Storage		dk		
WBI - Electric Power		dk	(\$0.00060)	
Subtotal - Transportation Costs		dk		
 Gas Commodity Charges				
Gas Commodity		dk		
 Total System Commodity Cost of Gas	 35,622,166	 dk		 \$104,920,979

1/ Capacity release estimated based on actual r

2/ Seasonal capacity release for November 2020 - March 2021 at an average price of \$4.61 per dk/month.

3/ Seasonal capacity release for November 2020 - March 2021 at a price of \$4.01 per dk/month.

4/ Seasonal capacity release for April - October 2021 at a price of \$0.61 per dk/month.

**MONTANA-DAKOTA UTILITIES CO.
SUMMARY OF PIPELINE RATES**

Pipeline Rate Changes Since The Last Filing Submitted

WBI Energy Transmission Inc. Docket No. RP21-574-000

On March 24, 2021, WBI Energy Transmission filed its Annual Fuel and Electric Power Reimbursement Adjustment in Docket No. RP21-574-000 to be effective April 1, 2021.

Approximate impact on Montana-Dakota's cost of gas: (0.3) cents per dk for North Dakota.

Pipeline Rate Calculations

Calculation of Northern Border Et Al Rate - Exhibit 4, page 2

Calculation of Northwestern Energy Demand and Commodity Charges - Exhibit 4, page 3

Calculation of South Dakota Intrastate Pipeline Transportation Charges - Exhibit 4, page 4

Calculation of Black Hills Gas Transportation Charges - Exhibit 4, page 5

Schedule Of Applicable Effective Pipeline Rates

WBI Energy Transmission, Inc. - Exhibit 4, pages 6 - 11 for Schedules FT-1, FT-1 (Valley Expansion), FTN-1, and FS-1.

Northern Border Pipeline Company - Exhibit 4, page 12 for Schedule T-1.

Foothills Pipe Lines, Ltd. - Billed on a cost of service basis so there are no tariff sheets.

NOVA Gas Transmission - Exhibit 4, pages 13-14 for Schedule FT-D.

NorthWestern Energy - Exhibit 4, page 15 for Schedule T-FTG-1.

South Dakota Intrastate Pipeline - Exhibit 4, page 16 for Rate 1.

Black Hills Gas Distribution, LLC - Exhibit 4, Page 17 for Schedule TC.

Viking Gas Transmission Company - Exhibit 4, Page 18-19 for Category 3 FT-A.

**MONTANA-DAKOTA UTILITIES CO.
CALCULATION OF NORTHERN BORDER ET AL RATE
EFFECTIVE JUNE 2021**

Northern Border 1/	
Monchy to Mina Mileage	506.0943
Maximum Rate (Daily)	<u>\$0.0245</u>
Maximum Rate Per 100 Miles	\$0.1240
Foothills (FT) Zone 9	
Rate (Canadian GJ/d) 2/	\$0.1810
GJ/d conversion to MMBtu	1.0551
Currency Exchange Rate 3/	<u>0.8140</u>
	0.1555
NOVA - FT-D	
Demand Rate (Canadian GJ/d) 4/	\$0.1643
GJ/d conversion to MMBtu	1.0551
Currency Exchange Rate 3/	<u>0.8140</u>
	0.1411
Northern Border Et Al Rate (dk/Day)	<u><u>\$0.4206</u></u>
Northern Border Et Al Rate (dk/Month)	<u><u>\$12.7933</u></u>

- 1/ T-1 & T-1B Daily Reservation Rate, Port of Morgan, MT to Ventura, IA effective January 1, 2020. See Exhibit 4, page 12.
- 2/ Rate Schedule FT, Firm Service Zone 9, rates effective January 1, 2021.
- 3/ Exchange rate per April 30, 2021 Gas Daily.
- 4/ FT-D Demand Rate per Month, Empress/McNeill Border, rates effective January 1, 2021 (expressed as a daily rate). Includes a 5% discount rate based on 3-4 year term contract expiring 12/31/2021. See Exhibit 4, page 13-14.

**MONTANA-DAKOTA UTILITIES CO.
NORTHWESTERN ENERGY DEMAND AND COMMODITY CHARGES
EFFECTIVE JUNE 2021**

<u>Demand:</u>	<u>Billing Determinants</u>	<u>Rate</u>	<u>Annual Charge</u>
Monthly Meter Charges 1/	12	\$393.75	\$4,725
MDDQ 2/	10,700	10.363950	1,330,731
			<u>1,335,456</u>
Demand charge per dk			<u><u>\$10.40075</u></u>
<u>Commodity: 3/</u>			\$0.06440

1/ One meter rated at >30,000 cubic feet per hour.

2/ Firm Transportation Reservation Rate (T-FTG-1), see Exhibit 4, page 15.
55th Revised Sheet No. 80.1, effective January 1, 2021.

3/ Firm Transmission Commodity Rate (T-FTG-1)
55th Revised Sheet No. 80.1, effective January 1, 2021.

Transportation (max)	\$0.060567
GTAC	<u>0.003834</u>
Total T-FTG-1 Rate (max)	<u><u>\$0.064401</u></u>

**MONTANA-DAKOTA UTILITIES CO.
SOUTH DAKOTA INTRASTATE PIPELINE TRANSPORTATION CHARGES
EFFECTIVE JUNE 2021**

<u>Demand:</u>	<u>Monthly Rate 1/</u>	<u>Daily Capacity 2/</u>	<u>Total</u>
MDDQ	\$170,620.58		
Estimated Interruptible Credit 3/	(48,800.00)		
	121,820.58	11,330	\$10.75204

1/ SD Intrastate Pipeline 2nd Revised Sheet No. 1 effective November 1, 2019 through August 31, 2023, see Exhibit 4, page 16.

2/ The design day Dk for Montana-Dakota Utilities Co. on Firm Transportation Service.

Design day volumes are not the total pipeline capacity. However, Montana-Dakota is the only firm customer on SDIP, therefore Montana-Dakota is contracted to pay the full monthly rate.

3/ Revenue credit based on average of the actual credits received for the 12 months ending January 2021.

**MONTANA-DAKOTA UTILITIES CO.
BLACK HILLS GAS TRANSPORTATION CHARGES
EFFECTIVE JUNE 2021**

<u>Demand:</u>	<u>Billing Determinants</u>	<u>Rate</u>	<u>Total</u>
Administrative Fee 1/	12	\$213	\$2,556
Demand charge per dk/Month	4,000		<u>\$0.05325</u>
<u>Commodity: 2/</u> Transportation			<u>\$0.5400</u>

1/ One meter @ \$114/meter and Off-system Firm Transport fee @ \$99/meter. Black Hills WY Gas Section B, First Sheet No. 11, see Exhibit 4, page 17.

2/ Discount Agreement for Montana-Dakota Utilities Co. on Firm Transportation Service Agreement #6001587 effective November 1, 2020 through October 31, 2022.

NOTICE OF CURRENTLY EFFECTIVE RATES

(ALL RATES ARE STATED IN CENTS PER DEKATHERM OR EQUIVALENT DEKATHERM AS INDICATED)

RATE SCHEDULE	UNIT	BASE TARIFF RATE	TOP THROUGHPUT SURCHARGE	GAS SUPPLY REALIGNMENT SURCHARGE	BASE TARIFF RATE PLUS SURCHARGES

RATE SCHEDULE FT-1					

RESERVATION CHARGE					
MAXIMUM DAILY DELIVERY QUANTITY (MDDQ)					
MAXIMUM	RATE PER EQV. DKT PER MO.	984.165	N.A.	N.A.	984.165
MINIMUM	RATE PER EQV. DKT PER MO	0.000	N.A.	N.A.	0.000
COMMODITY CHARGE					
MAXIMUM A/B/C/	RATE PER DKT	2.477	N.A.	N.A.	2.477
MINIMUM A/B/C/	RATE PER DKT	2.477	N.A.	N.A.	2.477
SCHEDULED OVERRUN CHARGE					
MAXIMUM A/B/C/	RATE PER DKT	34.367	N.A.	N.A.	34.367
MINIMUM A/B/C/	RATE PER DKT	2.477	N.A.	N.A.	2.477
VOLUMETRIC CAPACITY RELEASE CHARGE					
MAXIMUM	RATE PER DKT	32.356	N.A.	N.A.	32.356
MINIMUM	RATE PER DKT	0.000	N.A.	N.A.	0.000

-
- A/ SHIPPER MUST REIMBURSE TRANSPORTER IN-KIND FOR TRANSPORTATION FUEL USE AND LOST AND UNACCOUNTED FOR GAS. THE APPLICABLE PERCENTAGES ARE REFLECTED ON SHEET NO. 21A. THESE PERCENTAGES SHALL BE APPLIED TO THE APPLICABLE QUANTITIES OF GAS TENDERED TO TRANSPORTER FOR SHIPPER'S ACCOUNT AT THE RECEIPT POINT(S) INTO TRANSPORTER'S TRANSMISSION FACILITIES.
 - B/ SHIPPER MUST REIMBURSE TRANSPORTER FOR ELECTRIC POWER USED FOR TRANSPORTATION. THE APPLICABLE RATE IS REFLECTED ON SHEET NO. 21B. THIS RATE SHALL BE APPLIED TO THE APPLICABLE QUANTITIES OF GAS TENDERED TO TRANSPORTER FOR SHIPPER'S ACCOUNT AT THE RECEIPT POINT(S) INTO TRANSPORTER'S TRANSMISSION FACILITIES.
 - C/ SHIPPER MUST REIMBURSE TRANSPORTER FOR THE ACA SURCHARGE. SUCH SURCHARGE SHALL BE THE ACA UNIT CHARGE SPECIFIED IN THE ANNUAL NOTICE ISSUED BY THE FERC ENTITLED "FY [YEAR] GAS ANNUAL CHARGES CORRECTION FOR ANNUAL CHARGES UNIT CHARGE."

NOTICE OF CURRENTLY EFFECTIVE RATES

(ALL RATES ARE STATED IN CENTS PER DEKATHERM OR EQUIVALENT DEKATHERM AS INDICATED)

RATE SCHEDULE	UNIT	BASE TARIFF RATE	TOP THROUGHPUT SURCHARGE	GAS SUPPLY REALIGNMENT SURCHARGE	BASE TARIFF RATE PLUS SURCHARGES

RATE SCHEDULE FT-1 (VALLEY EXPANSION) A/B					

RESERVATION CHARGE					
MAXIMUM DAILY DELIVERY QUANTITY (MDDQ)					
MAXIMUM	RATE PER EQV. DKT PER MO.	1890.563	N.A.	N.A.	1890.563
MINIMUM	RATE PER EQV. DKT PER MO.	0.000	N.A.	N.A.	0.000
COMMODITY CHARGE					
MAXIMUM C/D/E/	RATE PER DKT	2.477	N.A.	N.A.	2.477
MINIMUM C/D/E/	RATE PER DKT	2.477	N.A.	N.A.	2.477
SCHEDULED OVERRUN CHARGE					
MAXIMUM C/D/E/	RATE PER DKT	34.367	N.A.	N.A.	34.367
MINIMUM C/D/E/	RATE PER DKT	2.477	N.A.	N.A.	2.477
VOLUMETRIC CAPACITY RELEASE CHARGE					
MAXIMUM	RATE PER DKT	62.155	N.A.	N.A.	62.155
MINIMUM	RATE PER DKT	0.000	N.A.	N.A.	0.000

-
- A/ APPLICABLE ONLY FOR INCREMENTAL CAPACITY CERTIFICATED IN DOCKET NO. CP17-257-000.
 - B/ REFER TO RATE SCHEDULE FT-1 FIRM TRANSPORTATION SERVICE FOR ALL TERMS AND CONDITIONS OF SERVICE.
 - C/ SHIPPER MUST REIMBURSE TRANSPORTER IN-KIND FOR TRANSPORTATION FUEL USE AND LOST AND UNACCOUNTED FOR GAS. THE APPLICABLE PERCENTAGES ARE REFLECTED ON SHEET NO. 21A. THESE PERCENTAGES SHALL BE APPLIED TO THE APPLICABLE QUANTITIES OF GAS TENDERED TO TRANSPORTER FOR SHIPPER'S ACCOUNT AT THE RECEIPT POINT(S) INTO TRANSPORTER'S TRANSMISSION FACILITIES.
 - D/ SHIPPER MUST REIMBURSE TRANSPORTER FOR ELECTRIC POWER USED FOR TRANSPORTATION. THE APPLICABLE RATE IS REFLECTED ON SHEET NO. 21B. THIS RATE SHALL BE APPLIED TO THE APPLICABLE QUANTITIES OF GAS TENDERED TO TRANSPORTER FOR SHIPPER'S ACCOUNT AT THE RECEIPT POINT(S) INTO TRANSPORTER'S TRANSMISSION FACILITIES.
 - E/ SHIPPER MUST REIMBURSE TRANSPORTER FOR THE ACA SURCHARGE. SUCH SURCHARGE SHALL BE THE ACA UNIT CHARGE SPECIFIED IN THE ANNUAL NOTICE ISSUED BY THE FERC ENTITLED "FY [YEAR] GAS ANNUAL CHARGES CORRECTION FOR ANNUAL CHARGES UNIT CHARGE."

NOTICE OF CURRENTLY EFFECTIVE RATES

(ALL RATES ARE STATED IN CENTS PER DEKATHERM OR EQUIVALENT DEKATHERM AS INDICATED)

RATE SCHEDULE	UNIT	BASE TARIFF RATE	TOP THROUGHPUT SURCHARGE	GAS SUPPLY REALIGNMENT SURCHARGE	BASE TARIFF RATE PLUS SURCHARGES

RATE SCHEDULE FTN-1					

RESERVATION CHARGE					
MAXIMUM DAILY DELIVERY QUANTITY (MDDQ)					
MAXIMUM	RATE PER EQV. DKT PER MO.	27.069	N.A.	N.A.	27.069
MINIMUM	RATE PER EQV. DKT PER MO.	1.203	N.A.	N.A.	1.203
VOLUMETRIC CAPACITY RELEASE CHARGE					
MAXIMUM	RATE PER DKT	0.890	N.A.	N.A.	0.890
MINIMUM	RATE PER DKT	0.040	N.A.	N.A.	0.040

NOTICE OF CURRENTLY EFFECTIVE RATES

(ALL RATES ARE STATED IN CENTS PER DEKATHERM OR EQUIVALENT DEKATHERM AS INDICATED)

RATE SCHEDULE	UNIT	BASE TARIFF RATE	TOP THROUGHPUT SURCHARGE	GAS SUPPLY REALIGNMENT SURCHARGE	BASE TARIFF RATE PLUS SURCHARGES

RATE SCHEDULE FS-1					

CAPACITY RESERVATION CHARGE					
MAXIMUM	RATE PER EQV. DKT PER MO.	2.347	N.A.	N.A.	2.347
MINIMUM	RATE PER EQV. DKT PER MO.	0.000	N.A.	N.A.	0.000
CAPACITY DELIVERABILITY CHARGE					
MAXIMUM	RATE PER EQV. DKT PER MO.	206.592	N.A.	N.A.	206.592
MINIMUM	RATE PER EQV. DKT PER MO.	0.000	N.A.	N.A.	0.000
INJECTION CHARGE					
MAXIMUM A/B/	RATE PER DKT	1.000	N.A.	N.A.	1.000
MINIMUM A/B/	RATE PER DKT	1.000	N.A.	N.A.	1.000
WITHDRAWAL CHARGE					
MAXIMUM A/B/	RATE PER DKT	1.000	N.A.	N.A.	1.000
MINIMUM A/B/	RATE PER DKT	1.000	N.A.	N.A.	1.000
SCHEDULED OVERRUN CHARGE					
INJECTION					
MAXIMUM A/B/	RATE PER DKT	25.644	N.A.	N.A.	25.644
MINIMUM A/B/	RATE PER DKT	1.000	N.A.	N.A.	1.000
WITHDRAWAL					
MAXIMUM A/B/	RATE PER DKT	25.644	N.A.	N.A.	25.644
MINIMUM A/B/	RATE PER DKT	1.000	N.A.	N.A.	1.000

-
- A/ SHIPPER MUST REIMBURSE TRANSPORTER IN-KIND FOR STORAGE FUEL USE AND LOST AND UNACCOUNTED FOR GAS. THE APPLICABLE PERCENTAGES ARE REFLECTED ON SHEET NO. 21A. THESE PERCENTAGES SHALL BE APPLIED TO THE APPLICABLE QUANTITIES OF GAS INJECTED AND/OR WITHDRAWN BY TRANSPORTER FOR SHIPPER'S ACCOUNT AT TRANSPORTER'S STORAGE FACILITIES.
- B/ SHIPPER MUST REIMBURSE TRANSPORTER FOR ELECTRIC POWER USED FOR STORAGE. THE APPLICABLE RATE IS REFLECTED ON SHEET NO. 21B. THIS RATE SHALL BE APPLIED TO THE APPLICABLE QUANTITIES OF GAS INJECTED AND/OR WITHDRAWN BY TRANSPORTER FOR SHIPPER'S ACCOUNT AT TRANSPORTER'S STORAGE FACILITIES.

NOTICE OF CURRENTLY EFFECTIVE RATES

FUEL USE AND LOST AND UNACCOUNTED FOR GAS ("L&U") REIMBURSEMENT PERCENTAGES

TRANSPORTATION - RATE SCHEDULES FT-1 AND IT-1

	<u>CURRENT PERCENTAGE</u>	<u>DEFERRAL PERCENTAGE</u>	<u>TOTAL PERCENTAGE</u>
FUEL USE REIMBURSEMENT	1.437%	(0.045)%	1.392%
L&U REIMBURSEMENT	0.119%	0.285%	0.404%

STORAGE - RATE SCHEDULES FS-1 AND IS-1

	<u>CURRENT PERCENTAGE</u>	<u>DEFERRAL PERCENTAGE</u>	<u>TOTAL PERCENTAGE</u>
FUEL USE REIMBURSEMENT	0.161%	0.052%	0.213%
L&U REIMBURSEMENT	0.065%	(0.075)%	(0.010)%

NOTICE OF CURRENTLY EFFECTIVE RATES

ELECTRIC POWER REIMBURSEMENT RATES (CENTS/DKT)

TRANSPORTATION - RATE SCHEDULES FT-1 AND IT-1

	<u>CURRENT RATE</u>	<u>DEFERRAL RATE</u>	<u>TOTAL RATE</u>
ELECTRIC POWER REIMBURSEMENT	1.153	0.027	1.180

STORAGE - RATE SCHEDULES FS-1 AND IS-1

	<u>CURRENT RATE</u>	<u>DEFERRAL RATE</u>	<u>TOTAL RATE</u>
ELECTRIC POWER REIMBURSEMENT	0.000	(0.060)	(0.060)

STATEMENT OF RATES

Rate Schedule -----	Long-Term Base Tariff Rate (per 100 Dth-Miles) 1/ -----
T-1 and T-1B	
Daily Reservation Rate - Port of Morgan, MT to Ventura, IA	
Maximum	\$0.0245
Minimum	\$0.0000
Daily Reservation Rate - Ventura, IA to North Hayden, IN	
Maximum	\$0.0263
Minimum	\$0.0000
Commodity Rate - Port of Morgan, MT to North Hayden, IN	
Maximum	\$0.0004
Minimum	\$0.0004

1/ Applicable to any Rate Schedule T-1 U.S. Shippers Service Agreement or any Rate Schedule T-1B Service Agreement with a primary term of at least twelve consecutive months.

Interim 2021 Rates

Table of Rates, Tolls and Charges - Year Two Transition

Service	Rates, Tolls and Charges	
1. Rate Schedule FT-R	Refer to Attachment "1" for applicable FT-R Demand Rate per month based on a three-year term (Price Point "B") & Surcharge for each Receipt Point Average Firm Service Receipt Price (AFSRP) \$231.95 / 10 ³ m ³ / month	
2. Rate Schedule FT-RN	Refer to Attachment "1" for applicable FT-RN Demand Rate per month & Surcharge for each Receipt Point	
3. Rate Schedule FT-D ¹	Refer to Attachment "2" for applicable FT-D Demand Rate per month based on a one year term (Price Point "Z") & Surcharge for each Group 1 or Group 2 Delivery Point Average FT-D Demand Rate for Group 1 Delivery Points \$5.28 / GJ / month FT-D Demand Rate for Group 2 Delivery Points \$7.73 / GJ / month FT-D Demand Rate for Group 3 Delivery Points \$9.27 / GJ / month	
4. Rate Schedule STFT	STFT Bid Price = Minimum of 100% of the applicable FT-D Demand Rate based on a one year term (Price Point "Z") for each Group 1 Delivery Point	
5. Rate Schedule FT-DW	FT-DW Bid Price = Minimum of 125% of the applicable FT-D Demand Rate based on a three year term (Price Point "Y") for each Group 1 Delivery Point	
6. Rate Schedule FT-P ¹	Refer to Attachment "3" for applicable FT-P Demand Rate per month	
7. Rate Schedule IT-R	Refer to Attachment "1" for applicable IT-R Rate for each Receipt Point	
8. Rate Schedule IT-D ¹	Refer to Attachment "2" for applicable IT-D Rate for each Delivery Point	
9. Rate Schedule FCS	The FCS Charge is determined in accordance with Attachment "1" to the applicable Schedule of Service	
10. Rate Schedule PT	The PT Charge is determined in accordance with the applicable Schedule of Service	
11. Rate Schedule OS	<u>Schedule No.</u>	<u>Charge</u>
	2019400720	\$105.70 / 10 ³ m ³ / month
	2011475772	\$9,250 / month
	2020012304	\$647 / month
	2003004522	Applicable IT-R and IT-D Rate
	2011476052 / 2011476054	\$0.2540 / GJ subject to \$717,000 Minimum Annual Charge
	2017887638 / 2011476092	\$0.095 / GJ and
	2016721799 / 2016759254	\$1,000 / month
12. Rate Schedule CO ₂	<u>Tier</u>	<u>CO₂ Rate (\$/10³m³)</u>
	1	575.25
	2	455.14
	3	295.33
13. Monthly Abandonment Surcharge ²	\$7.17 / 10 ³ m ³ / month	\$0.19 / GJ / month
14. Daily Abandonment Surcharge ³	\$0.24 / 10 ³ m ³ / day	\$0.0062 / GJ / day
15. Federal Fuel Charge ⁴	Marketable Natural Gas ⁵	\$0.0587 / m ³

- Service under rate Schedules FT-D, FT-P and IT-D for delivery stations identified in Attachment 2, and rate Schedules OS No. 2011476092, are subject to the ATCO Pipelines Franchise Fees pursuant to paragraph 15.13 of the General Terms and Conditions.
- Monthly Abandonment Surcharge applicable to Rate Schedules FT-R, FT-D, FT-P, FT-RN, FT-DW, and STFT, and the following Rate Schedule OS: 2019400720.
- Daily Abandonment Surcharge applicable to Rate Schedules IT-R, IT-D, the following Rate Schedules OS: 2011476052, 2011476054, 2017887638, 2011476092, 2016721799, 2016759254, 2003004522, and if applicable Over-Run Gas.
- Collected on all deliveries of gas within Alberta pursuant to any Rate Schedule unless NGTL has received a valid exemption certificate pursuant to the *Greenhouse Gas Pollution Pricing Act*.
- See FCN12 Canada Revenue Agency Administrative Position regarding Marketable Natural Gas under Part 1 of the *Greenhouse Gas Pollution Pricing Act*.

Interim 2021 Rates

Delivery Point Rates - Year Two Transition

Group 1 Delivery Point Number	Group 1 Delivery Point Name	FT-D Demand Rate Price Point "Z" (\$/GJ/mo)	IT-D Rate (\$/GJ/d)
2000	ALBERTA-B.C. BORDER	5.32	0.1924
31111	ALLIANCE CLAIRMONT INTERCONNECT APN	5.26	0.1902
31110	ALLIANCE EDSON INTERCONNECT APN	5.26	0.1902
31112	ALLIANCE SHELL CREEK INTERCONNECT APGC	5.26	0.1902
1958	EMPRESS BORDER	5.26	0.1902
3886	GORDONDALE BORDER	5.26	0.1902
6404	MCNEILL BORDER	5.26	0.1902

Group 2 Delivery Point Number	Group 2 Delivery Point Name	FT-D Demand Rate Price Point "Z" (\$/GJ/mo)	IT-D Rate (\$/GJ/d)	Subject to ATCO Pipelines Franchise Fees ¹
31000	A.T. PLASTICS SALES APN	7.73	0.2794	Yes
31001	ADM AGRI INDUSTRIES SALES APN	7.73	0.2794	Yes
3880	AECO INTERCONNECTION	7.73	0.2794	
31003	AGRIUM CARSELAND SALES APS	7.73	0.2794	
31002	AGRIUM FT. SASK SALES APN	7.73	0.2794	Yes
31004	AGRIUM REDWATER SALES APN	7.73	0.2794	
31005	AINSWORTH SALES APGP	7.73	0.2794	
31006	AIR LIQUIDE SALES APN	7.73	0.2794	
6126	AITKEN CREEK SOUTH SALES ²	10.57	0.3726	
3214	AKUINU RIVER WEST SALES	7.73	0.2794	
31007	ALBERTA ENVIROFUELS SALES APN	7.73	0.2794	Yes ³
31008	ALBERTA HOSPITAL SALES APN	7.73	0.2794	Yes
3868	ALBERTA-MONTANA BORDER	7.73	0.2794	
3297	ALDER FLATS SOUTH NO 2 SALES	7.73	0.2794	
3059	ALLISON CREEK SALES	7.73	0.2794	
6132	ALTARES SALES ²	10.57	0.3726	
6133	ALTARES SOUTH SALES ²	10.57	0.3726	
31009	ALTASTEEL SALES APN	7.73	0.2794	Yes ³
3562	AMOCO SALES (BP SALES TAP)	7.73	0.2794	
6145	ANDERSON LAKE SALES	7.73	0.2794	
31012	APL JASPER SALES APN	7.73	0.2794	Yes
3488	ARDLEY SALES	7.73	0.2794	
3237	ASPEN SALES	7.73	0.2794	
3662	ATUSIS CREEK EAST SALES	7.73	0.2794	
3216	AURORA NO 2 SALES	7.73	0.2794	
3135	AURORA SALES	7.73	0.2794	
3288	BANTRY SALES	7.73	0.2794	
3423	BASHAW WEST SALES	7.73	0.2794	
31013	BAYMAG SALES APS	7.73	0.2794	
6112	BAY TREE SALES	7.73	0.2794	
31014	BEAR CREEK COGEN SALES APGP	7.73	0.2794	

NATURAL GAS TARIFF

NorthWestern
Energy

Canceling 55th Revised Sheet No. 80.1
54th Revised Sheet No. 80.1

Schedule No. T-FTG-1

TRANSPORTATION BUSINESS UNIT
FIRM TRANSPORTATION NATURAL GAS SERVICE

APPLICABILITY: Applicable to Shippers for firm transportation service on the Utility Transmission System under the terms of a Firm Gas Transportation Service Agreement (Agreement) between the Utility Transportation Business Unit (Utility) and Shipper and as subject to Rate Schedule General Terms and Operating Conditions (Rate Schedule GTC-1).

	<u>Total Rate</u>	<u>Tax Portion of Rate</u>	<u>Rate Without Tax</u>
RATES: Net Monthly Bill:			
Monthly Service Charge per Meter:			
Meters Rated @ Cu. Ft. per hour			
5,000 to 10,000	\$ 123.50		\$ 123.50
10,001 to 30,000	\$ 177.45		\$ 177.45
>30,000	\$ 393.75		\$ 393.75

PLUS:

Transmission Reservation Rate (MDDQ):

Maximum Monthly Reservation Rate for
Maximum Daily Delivery Quantity
(MDDQ)

\$ 1.0363950 \$ 0.3241182 \$ 0.7122768

Transmission Commodity Rate (Therm):

Maximum

\$ 0.0060567 \$ 0.0024152 \$ 0.0036415

Minimum

\$ 0.0017935 \$ 0.0017935

GTAC Amortization

\$ 0.0003834 \$ 0.0003834

Balancing Penalty Rate

Higher of \$25.00/ Dekatherm Or
150% of Market Price

TAX PORTION OF RATE: This rate represents the amount charged to customers for state and local taxes and fees and is separately disclosed on customer's bill.

PLUS:

OTHER APPLICABLE CHARGES: All charges contained on other applicable rate schedules approved by the Public Service Commission of Montana.

GAS TRANSPORTATION ADJUSTMENT CLAUSE: Pursuant to MPSC Order the above GTAC Amortization shall be in effect until the balance is extinguished.

MINIMUM BILL: Per respective contracts.

(continued)

Docket No.: 2020.11.112
Tariff Letter No.: 345-G
Per MCA Section 69-3-308(2)(C)

Effective for services rendered on or
after January 1, 2021
Jessie Osborne
Administrative Assistant



**STATE OF SOUTH DAKOTA
GAS RATE SCHEDULE**

South Dakota Intrastate Pipeline Company
1415 North Airport Road
Pierre, SD 57501

SD P.U.C. Section 3
2nd Revised Sheet No. 1
Cancelling 1st Revised Sheet No. 1

FIRM TRANSPORTATION SERVICE Rate 1

Transportation rate is \$170,620.58 monthly for Firm Service effective November 1, 2019 through August 31, 2023. I

The Transportation rate is \$160,741.08 monthly for Firm Service effective September 1, 2023, if Transporter has not submitted a new application for rates, with an effective date prior to August 31, 2023. I

Revenue credits shall be applicable as set forth in the Contract for Firm Transportation Service. Service under this Firm Transportation Service Schedule shall be subject to the General Terms And Conditions as stated in Section 5. N
N

Date Filed: October 23, 2019

Effective Date: November 1, 2019

Issued by Lisa A. Murphy, Vice President-Chief Financial Officer

Docket No.: NG17-009



SECTION B – STATEMENT OF RATES - CONTINUED
Firm and Interruptible Transportation Service Rates

Service	Monthly Charge	Base Volumetric Charge	TCJA Amortization Credit	Maximum Volumetric Charge
On-System Firm Transport	\$198.00	\$0.1198	(\$0.0009)	\$0.1189
Off-System Firm Transport	\$99.00	\$0.1198 \$0.1198		\$0.1198
Off-System Interruptible Transport	\$99.00			\$0.1198
Administrative Fee	\$114.00			
Unauthorized Overrun Charge				\$0.8000
Supply Scheduling Charge				\$0.0060
Wyoming Integrity Rider				\$0.0000

All volumetric charges are per therm.

Interruptible Transportation Service is not available to On-System Customers.

Wyoming Integrity Rider is applicable to all maximum rate On-System Transportation Service Customers.

The Minimum Rate for Transportation Service is \$0.0010 per therm.

Fuel and Lost and Unaccounted For Gas Percentages

Casper Division

Transmission Fuel and Lost and Unaccounted For Gas percentage = 1.005%
 Storage Injection Fuel and Lost and Unaccounted For Gas percentage = 2.897%
 Choice Gas Service Distribution Fuel and Lost and Unaccounted For Gas Reconciliation percentage = (0.099)%
 Distribution and Gas Cost Adjustment Fuel and Lost and Unaccounted For Gas percentage = (0.429)%

Cheyenne Division

Distribution and Gas Cost Adjustment Fuel and Lost and Unaccounted For Gas percentage = 1.000%

Gillette Division

Transmission Fuel and Lost and Unaccounted For Gas percentage = 0.350%
 Choice Gas Service Distribution Fuel and Lost and Unaccounted for Gas Reconciliation percentage = 0.828%
 Distribution and Gas Cost Adjustment Fuel and Lost and Unaccounted for Gas percentage = 0.932%

Torrington Division

Choice Gas Service Distribution Fuel and Lost and Unaccounted For Gas Reconciliation percentage = 2.678%
 Distribution and Gas Cost Adjustment Fuel and Lost and Unaccounted For Gas percentage = 0.495%

STATEMENT OF RATES
 (Rates Per Dekatherm)

Currently Effective Term-Differentiated Rates

Rate Schedule	Base Tariff Rate
<hr/>	
Category 1 (Contract Term of Less than 3 Years)	
<hr/>	
Monthly Reservation Rates	
FT-A	
Zone 1-1 Maximum Rate	\$3.9106
Zone 1-1 Minimum Rate	\$0.0000
Zone 1-2 Maximum Rate 1/	\$4.9080
Zone 1-2 Minimum Rate	\$0.0000
Zone 2-2 Maximum Rate	\$2.6118
Zone 2-2 Minimum Rate	\$0.0000
<hr/>	
Category 2 (Contract Term of 3 Years to less than 5 Years)	
<hr/>	
Monthly Reservation Rates	
FT-A	
Zone 1-1 Maximum Rate	\$3.8583
Zone 1-1 Minimum Rate	\$0.0000
Zone 1-2 Maximum Rate	\$4.8330
Zone 1-2 Minimum Rate	\$0.0000
Zone 2-2 Maximum Rate	\$2.5890
Zone 2-2 Minimum Rate	\$0.0000
<hr/>	
Category 3 (Contract Term of 5 or more Years)	
<hr/>	
Monthly Reservation Rates	
FT-A	
Zone 1-1 Maximum Rate	\$3.8060
Zone 1-1 Minimum Rate	\$0.0000
Zone 1-2 Maximum Rate	\$4.7580
Zone 1-2 Minimum Rate	\$0.0000
Zone 2-2 Maximum Rate	\$2.5662
Zone 2-2 Minimum Rate	\$0.0000

1/ Throughout Viking's Statement of Rates and Tariff, "Zone 1-2" shall mean Transportation Service for quantities received in Zone 1 and delivered in Zone 2 or received in Zone 2 and delivered in Zone 1 whether by transport, exchange, or Displacement.

Rate Schedule	Base Tariff Rate	Fuel and Loss Retention Percentages 2/
Commodity Rates 1/		
FT-A – Maximum Rates		
Zone 1-1	\$0.0136	0.63%
Zone 1-2	\$0.0136	0.63%
Zone 2-2	\$0.0136	0.00%
Minimum Rate	\$0.0136	
IT and AOT		
Zone 1-1	\$0.1422	0.63%
Zone 1-2	\$0.1750	0.63%
Zone 2-2	\$0.0995	0.00%
Minimum Rate	\$0.0136	

- 1/ Pursuant to Section 19 of the General Terms and Conditions, the maximum and minimum commodity rates shall be increased to include the Commission-authorized Annual Charge Adjustment unit rate as published on the Commission's Web Site located at <http://www.ferc.gov>.
- 2/ The Fuel and Loss Retention Percentages shall be applicable to all transportation rate schedules and includes the following Gas Lost and Unaccounted For Percentages: 0.00% for Zone 1-1, 0.00% for Zone 1-2, and 0.00% for Zone 2-2. Transportation entirely by Displacement will incur only the Gas Lost and Unaccounted For Percentages.

Rate Schedule	Base Tariff Rate	Adjustment Under Section 27 1/	Rate After Current Adjustment
LMS – Monthly Demand Rate	\$1.0000		\$1.0000
LMS – Daily Overrun Rate	\$0.1750		\$0.1750
LMS – Load Management Cost Reconciliation Adjustment		\$0.0168	

- 1/ Pursuant to Section 27 of the General Terms and Conditions of this Tariff, a mechanism is established to reconcile through surcharges or credits to the Rate Schedule LMS rate, as appropriate, differences between the cost to maintain Company's line pack gas and the amounts Company receives or pays for such gas arising out of the purchase and sale of such gas.

Rate Schedule	Maximum Rate Per Dekatherm	Minimum Rate Per Dekatherm
PAL		
NPL, OPL, and APL Service:		
Daily Commodity Rate	\$0.1750	\$0.0000
RPL Service:		
Daily Reservation Rate	\$0.1750	\$0.0000

**MONTANA-DAKOTA UTILITIES CO.
RETURN ON CYCLE STORAGE BALANCES
AND PREPAID DEMAND AND COMMODITY BALANCES
NORTH DAKOTA GAS
EFFECTIVE JUNE 2021**

	General Service		
	Storage Balance 1/	Commodity Balance 2/	Prepaid Demand 1/
October 2020	\$8,617,421	\$406,013	\$5,811,733
November	7,340,606	360,403	4,707,128
December	6,002,079	290,909	2,280,403
January 2021	3,325,654	208,910	(426,621)
February	(451,847)	90,729	(2,416,767)
March	(1,675,058)	52,460	(3,608,520)
April	(1,417,849)	59,426	(3,433,527)
May	313,187	112,653	(2,044,541)
June	3,203,232	201,516	(149,126)
July	5,577,362	274,517	1,765,403
August	7,798,471	335,461	3,679,932
September	9,737,204	389,790	5,361,119
October	11,169,389	428,443	5,697,564
13 month average	<u>\$4,579,989</u>	<u>\$247,018</u>	<u>\$1,324,937</u>
Rate of Return	6.851%	6.851%	6.851%
Return	\$313,775	\$16,923	\$90,771
Return Requirement	<u>\$382,933</u>	<u>\$20,653</u>	<u>\$110,778</u>

1/ Allocated on percent of Contracted Capacity.

2/ Allocated on Total Normalized Firm Dk Deliveries.

**MONTANA-DAKOTA UTILITIES CO.
COMPUTATION OF (OVER) / UNDER RECOVERED GAS COST ACCOUNT BALANCE
APPLICABLE TO NORTH DAKOTA
FIRM**

	(Over) Under Recovery	Refunds & Other	Interest 1/	Total Net Additions	Actual Dk Sales	Adjustment Per Dk	Total Adjustment Amount	Net Change- Additions less Adjustment	Cumulative Balance
Balance @ July 31, 2020									<u>(\$5,634,020)</u>
August	(\$111,978)	\$0	(\$465)	(\$112,443)	270,591	(\$0.160)	(\$43,295)	(\$69,148)	(5,703,168)
September	14,309	0	(518)	13,791	336,925	(0.160)	(53,907)	67,698	(5,635,470)
October	34,284	0	(466)	33,818	548,840	(0.340)	(126,829) 2/	160,647	(5,474,823)
November	(443,555)	0	(407)	(443,962)	1,397,964	(0.340)	(475,308)	31,346	(5,443,477)
December	971,202	0	(405)	970,797	2,023,209	(0.340)	(687,891)	1,658,688	(3,784,789)
January 2021	433,777	0	(250)	433,527	2,368,955	(0.340)	(805,444)	1,238,971	(2,545,818)
February	3,675,207	0	(84)	3,675,123	2,692,720	(0.340)	(915,525)	4,590,648	2,044,830
March	10,410,175	0	39	10,410,214	2,690,726	0.000	(648,319) 3/	11,058,533	13,103,363
Balance @ March 31, 2021									<u>\$13,103,363</u>

1/ Interest calculated at Three Month Treasury Bill rate.

2/ Reflects 332,094 dk @ (\$0.16) and 216,746 dk @ (\$0.34).

3/ Reflects 1,906,819 dk @ (\$0.340) and 783,907 dk @ (\$0.000).

MONTANA-DAKOTA UTILITIES CO.
COMPUTATION OF (OVER) / UNDER RECOVERED GAS COST ACCOUNT BALANCE
APPLICABLE TO NORTH DAKOTA
INTERRUPTIBLE

	(Over) Under Recovery	Refunds & Other	Interest 1/	Total Net Additions	Actual Dk Sales	Adjustment Per Dk	Total Adjustment Amount	Net Change- Additions less Adjustment	Cumulative Balance
Balance @ July 31, 2020									<u>(\$188,326)</u>
August	(\$2,460)	\$0	(\$16)	(\$2,476)	18,463	\$0.285	\$5,262	(\$7,738)	(196,064)
September	8,637	0	(18)	8,619	29,292	0.285	8,348	271	(195,793)
October	11,600	0	(16)	11,584	35,972	(0.320)	5,006 2/	6,578	(189,215)
November	1,491	0	(14)	1,477	54,510	(0.320)	(17,443)	18,920	(170,295)
December	7,830	0	(13)	7,817	57,874	(0.320)	(18,519)	26,336	(143,959)
January 2021	2,943	0	(10)	2,933	64,806	(0.320)	(20,739)	23,672	(120,287)
February	140,699	0	(4)	140,695	69,246	(0.320)	(22,158)	162,853	42,566
March	225,710	0	1	225,711	81,255	0.000	(23,941) 3/	249,652	292,218
Balance @ March 31, 2021									<u>\$292,218</u>

- 1/ Interest calculated at Three Month Treasury Bill rate.
2/ Reflects 27,300 dk @ \$0.285 and 8,672 dk @ (\$0.32).
3/ Reflects 74,814 dk @ (\$0.320) and 6,441 dk @ (\$0.000).

**MONTANA-DAKOTA UTILITIES CO.
COMPUTATION OF (OVER) / UNDER RECOVERED GAS COST ACCOUNT BALANCE
APPLICABLE TO NORTH DAKOTA
AIR FORCE**

	(Over) Under Recovery	Refunds & Other	Interest 1/	Total Net Additions	Actual Dk Sales	Adjustment Per Dk	Total Adjustment Amount	Net Change- Additions less Adjustment	Cumulative Balance
Balance @ July 31, 2020									<u><u>(\$30,977)</u></u>
August	(\$13,443)	\$0	(\$3)	(\$13,446)	2,717	\$0.098	\$266	(\$13,712)	(44,689)
September	(797)	0	(4)	(801)	2,705	0.098	265	(1,066)	(45,755)
October	5,993	0	(4)	5,989	8,236	(0.077)	807 2/	5,182	(40,573)
November	(9,960)	0	(3)	(9,963)	29,100	(0.077)	(2,240)	(7,723)	(48,296)
December	12,963	0	(4)	12,959	38,702	(0.077)	(2,980)	15,939	(32,357)
January 2021	(2,490)	0	(2)	(2,492)	47,519	(0.077)	(3,659)	1,167	(31,190)
February	(26,461)	0	(1)	(26,462)	51,191	(0.077)	(3,942)	(22,520)	(53,710)
March	319,392	0	(1)	319,391	63,731	0.000	(4,907) 3/	324,298	270,588
Balance @ March 31, 2021									<u><u>\$270,588</u></u>

1/ Interest calculated at Three Month Treasury Bill rate.

2/ Reflects 8,236 dk @ \$0.098 and 0 dk @ (\$0.077).

3/ Reflects 63,731 dk @ (\$0.077) and 0 dk @ (\$0.000).

**MONTANA-DAKOTA UTILITIES CO.
COMPUTATION OF (OVER) / UNDER RECOVERED GAS COST ACCOUNT BALANCE
APPLICABLE TO NORTH DAKOTA
CONTRACTED DEMAND**

	(Over) Under Recovery	Refunds & Other	Interest 1/	Total Net Additions	Actual Dk Sales	Adjustment Per Dk	Total Adjustment Amount	Net Change- Additions less Adjustment	Cumulative Balance
Balance @ July 31, 2020									<u><u>(\$5,809)</u></u>
August	(\$2,094)	\$0	\$0	(\$2,094)	15,298	\$0.000	\$0	(\$2,094)	(7,903)
September	(114)	0	(1)	(115)	13,984	0.000	0	(115)	(8,018)
October	8,291	0	(1)	8,290	11,380	(0.021)	0 2/	8,290	272
November	(13,646)	0	0	(13,646)	14,251	(0.021)	(300)	(13,346)	(13,074)
December	20,210	0	(1)	20,209	21,087	(0.021)	(443)	20,652	7,578
January 2021	9,629	0	1	9,630	22,931	(0.021)	(481)	10,111	17,689
February	11,863	0	1	11,864	20,070	(0.021)	(421)	12,285	29,974
March	90,927	0	1	90,928	25,399	0.000	(532) 3/	91,460	121,434
Balance @ March 31, 2021									<u><u>\$121,434</u></u>

1/ Interest calculated at Three Month Treasury Bill rate.

2/ Reflects 11,380 dk @ \$0.000 and 0 dk @ (\$0.021).

3/ Reflects 25,399 dk @ (\$0.021) and 0 dk @ (\$0.000).

MONTANA-DAKOTA UTILITIES CO.
COST OF GAS - PROPANE
NORTH DAKOTA
EFFECTIVE JUNE 2021

Cost of Purchased Propane	\$8,415
Gallons Purchased	12,022
Projected dk Sales	1,100
Propane Cost per Dk	\$7.650
Average Cost of Propane as Adjusted for Losses @ 99.55%	7.685
Less: Propane Cost Level in Rates 1/	<u>8.234</u>
Current Propane Cost Adjustment	<u><u>(\$0.549)</u></u>

1/ Propane Cost Level in Current Rates - Case No. PU-21-008, effective May 1, 2021.

MONTANA-DAKOTA UTILITIES CO.
COST OF GAS - PROPANE TARIFF SHEET
NORTH DAKOTA PROPANE
EFFECTIVE JUNE 2021

Cost of Gas - Propane

Current Propane Cost (Exhibit 7, Page 1)	\$7.685
Prior Filed Propane Cost	<u>8.234</u>
Current Propane Cost Adjustment	<u>(\$0.549)</u>

Surcharge Adjustment

Current Adjustment	\$0.204
Prior Filed Adjustment	<u>0.204</u>
Change in Surcharge Adjustment	\$0.000

Grain Drying Margin Sharing

Current Adjustment	(\$0.031)
Prior Adjustment	<u>(0.031)</u>
Change in Grain Drying Margin Sharing	\$0.000

Total Cost of Gas Items \$7.858

Net Increase (Decrease) in Gas Costs (\$0.549)

**MONTANA-DAKOTA UTILITIES CO.
CALCULATION OF (OVER) / UNDER RECOVERED GAS COST ACCOUNT BALANCE
APPLICABLE TO NORTH DAKOTA
PROPANE**

	<u>(Over) Under Recovery</u>	<u>Refunds & Other</u>	<u>Interest 1/</u>	<u>Total Net Additions</u>	<u>Actual Dk Sales</u>	<u>Adjustment Per Dk</u>	<u>Total Adjustment Amount</u>	<u>Net Change- Additions less Adjustment</u>	<u>Cumulative Balance</u>
Balance @ February 28, 2021									<u><u>(\$2,365)</u></u>
March 2021	\$2,873	\$0	\$0	\$2,873	5,036	(\$1.084)	(\$5,460)	\$8,333	5,968
Balance @ March 31, 2021									<u><u>\$5,968</u></u>

1/ Interest calculated at Three Month Treasury Bill rate.