



UTILITIES CO.

A Subsidiary of MDU Resources Group, Inc.

400 North Fourth Street
Bismarck, ND 58501
701-222-7900

November 8, 2021

Executive Secretary
North Dakota Public Service Commission
State Capitol Building
Bismarck, ND 58505

Re: Cost of Gas Adjustment (COG)
Rate 88 and Rate 99
Case No. PU-21-008

In accordance with North Dakota Century Code Section 49-05-05, Montana-Dakota Utilities Co. (Montana-Dakota) electronically submits a Cost of Gas (COG) – Natural Gas change pursuant to the terms of Rates 88. Montana-Dakota will not seek a COG – Propane adjustment for the month of December 2021 for Rate 99. In response to the COVID-19 pandemic, Montana-Dakota has provided an electronic copy only to further reduce the potential spread of the virus.

The COG Adjustment tariff (Rate 99), Section 2(b) provides that “Montana-Dakota shall file to reflect changes in its average cost of gas supply only when the amount of such COG is at least 25 (twenty-five) cents per dk.” For Rate 99 – Propane, the COG adjustment for the month of December 2021 results in a change of less than 25 cents per dk, and therefore, in accordance with the authorized tariff, Montana-Dakota will not seek a COG adjustment change for the month of December 2021.

The Rate Summary Sheet (6th Revised Sheet No. 3) showing the proposed natural gas rates reflecting the COG effective December 1, 2021 along with currently effective distribution rates is provided in Exhibit 1. The net effect of this filing, calculated pursuant to the terms of Rate 88, is an increase of \$0.419 per dk for residential customers and firm general customers, an increase of \$0.487 per dk for small and large interruptible customers, and an increase of \$0.484 per dk for Air Force interruptible customers.

Montana-Dakota purchases gas supplies under a number of contracts and secures transportation service over a number of pipelines for delivery of the natural gas purchased to Montana-Dakota’s distribution system to meet the demands of its customers. The commodity cost of natural gas has increased \$0.460 per dk since the October 1, 2021 rates due to an increase in the overall commodity price of gas. In addition, there was an update to the Company’s firm dk requirements, a decrease in transportation capacity and changes in pipeline and other costs resulted in a decrease of \$0.041 per dk in North Dakota.

Montana-Dakota decreased its transportation capacity by 5,233 dk per day. The paths associated with this capacity are no longer necessary as a result of the Valley Expansion Project and the St. Anthony Tie Project.

The following Exhibits are provided in support of the COG rates to be effective December 1, 2021:

- Exhibit 2 summarizes the cost of gas adjustment, the surcharge adjustment, and the grain drying margin sharing adjustment calculated pursuant to the terms of Rate 88 that will apply during the month of December 2021.
- Exhibit 3, shows the calculation of the current gas cost adjustment that will be applicable to Montana-Dakota's customers for the month of December 2021 along with an explanation of the reasons for the decrease in the market price of gas. The average cost of gas for firm customers, adjusted for losses, is \$5.856 per dk.
- Exhibit 3a is marked as "Confidential" and contains confidential information regarding gas commodity pricing and is designated as Trade Secret in accordance with the Commission's February 19, 2020, Order in Case No. PU-20-008. The Commission Order in Case No. PU-21-008 is pending. Exhibit 3a – Public Copy is included in this filing.
- Exhibit 4 provides a summary of the change in pipeline rates occurring since the October PGA filing submitted September 8, 2021 and a copy of applicable effective pipeline rates along with supporting workpapers.
- Exhibit 5 shows the calculation of the return on storage inventory balances and prepaid demand and commodity balances using the calculation procedure set forth in Rate 88. The overall rate of return of 6.851% applied to the balances was authorized by the Commission in Case No. PU-20-379.
- Exhibit 6 shows the computation of the (over)/under recovered gas cost account balances.

The COG changes, calculated in accordance with Rate 88, will amount to an increase of approximately \$1,254,400 for natural gas customers during the month of December 2021. All of Montana-Dakota's retail natural gas customers in North Dakota may be affected by this proposal. There were 111,539 natural gas customers in North Dakota as of October 31, 2021.

Please refer all inquiries regarding this filing to:

Ms. Tara R. Vesey
Manager of Regulatory Affairs
Montana-Dakota Utilities Co.
400 North Fourth Street
Bismarck, ND 58501

Also, please send copies of all written inquiries, correspondence and pleadings to:

Ms. Allison Mann
Attorney
MDU Resources Group, Inc.
P. O. Box 5650
Bismarck, ND 58506-5650

Montana-Dakota submitted a check on March 3, 2021 to the North Dakota Public Service Commission for \$600 pursuant to the requirements of North Dakota Century Code Section 49-05-05. This payment will cover the filing fee associated with the monthly COG filings.

Montana-Dakota respectfully requests this electronic filing, in lieu of an original and two (2) physical copies, be accepted as being in full compliance with the filing requirements of this Commission.

If you have any questions regarding this filing, please contact me at (701) 222-7955 or tara.vesey@mdu.com

Sincerely,

/s/ Tara R. Vesey

Tara R. Vesey
Manager of Regulatory Affairs

Attachment
cc: A. Mann

**RATE SUMMARY SHEET
(PROPOSED)**



Montana-Dakota Utilities Co.

400 N 4th Street
Bismarck, ND 58501

State of North Dakota Gas Rate Schedule

NDPSC Volume 8

6th Revised Sheet No. 3

Canceling 5th Revised Sheet No. 3

RATE SUMMARY SHEET

Page 1 of 2

Rate Schedule	Sheet No.	Basic Service Charge	Distribution Delivery Charge	Rates 88 & 99 Cost of Gas	Total Rate/ Dk
Residential Rate 60	4	\$0.8244 per day	\$0.000	\$6.345	\$6.345
Air Force Rate 64	7				
Minot Air Force Base		\$2,000.00 per month			
PAR Site		\$175.00 per month			
Firm Service			\$0.449	\$6.345	\$6.794
Interruptible Service - PAR			\$0.255	\$4.977	\$5.232
Interruptible Service - MAFB			\$0.255	\$5.122	\$5.377
Firm General Service Rate 70	13				
Meters rated < 500 cubic feet		\$0.75 per day	\$1.174	\$6.345	\$7.519
Meters rated > 500 cubic feet		\$2.13 per day	\$0.917	\$6.345	\$7.262
Small Interruptible Gas Rate 71	14	\$450.00 per month	(Maximum) \$0.566	\$4.977	(Maximum) \$5.543
Optional Seasonal Gas Service Rate 72	15				
Meters rated < 500 cubic feet		\$0.75 per day	\$1.174	\$6.463	\$7.637
Meters rated > 500 cubic feet		\$2.13 per day	\$0.917	\$6.463	\$7.380
Contracted Demand Service Rate 74	16		(Demand Charge)	(Capacity Charge)	\$10.650
Meters rated < 500 cubic feet		\$0.75 per day	\$8.000	(COG/Dk)	\$5.125
Meters rated > 500 cubic feet		\$2.13 per day			
Transportation Service	24				
Small Interruptible Rate 81		\$450.00 per month			
Maximum			\$0.566		\$0.566
Minimum			\$0.102		\$0.102
Large Interruptible Rate 82		\$1,600.00 per month			
Maximum			\$0.237		\$0.237
Minimum			\$0.061		\$0.061
Large Interruptible Gas Rate 85	27	\$1,600.00 per month	(Maximum) \$0.237	\$4.977	(Maximum) \$5.214
Residential Propane Rate 90	32	\$0.8244 per day	\$0.000	\$13.841	\$13.841
Firm General Propane Rate 92	34				
Meters rated < 500 cubic feet		\$0.75 per day	\$1.174	\$13.841	\$15.015
Meters rated > 500 cubic feet		\$2.13 per day	\$0.917	\$13.841	\$14.758

Date Filed: November 8, 2021

Effective Date: Service rendered on and after December 1, 2021

Issued By: Tara R. Vesey
Manager - Regulatory Affairs

Case No.: PU-21-008

MONTANA-DAKOTA UTILITIES CO.
COST OF GAS TARIFF SHEET
NORTH DAKOTA GAS
EFFECTIVE DECEMBER 2021

	Firm			Small & Large Interruptible	Air Force Interruptible
	Residential & General Service	Optional Seasonal	Contracted Demand		
<u>Gas Cost Adjustment:</u>					
Gas Cost Level (Exhibit 3)	\$5.856	\$5.974	\$4.461	\$4.624	\$4.602
Prior Filed Gas Cost (Effective 10/1/2021)	<u>5.437</u>	<u>5.559</u>	<u>3.987</u>	<u>4.137</u>	<u>4.118</u>
Current Gas Cost Adjustment	\$0.419	\$0.415	\$0.474	\$0.487	\$0.484
<u>Surcharge Adjustment:</u>					
Current Adjustment	\$0.500	\$0.500	\$0.675	\$0.353	\$0.520
Prior Filed Adjustment	<u>0.500</u>	<u>0.500</u>	<u>0.675</u>	<u>0.353</u>	<u>0.520</u>
Change in Surcharge Adjustment	\$0.000	\$0.000	\$0.000	\$0.000	\$0.000
Gas Cost Level	\$5.856	\$5.974	\$4.461	\$4.624	\$4.602
Plus: Surcharge	<u>0.500</u>	<u>0.500</u>	<u>0.675</u>	<u>0.353</u>	<u>0.520</u>
Total Gas Cost Level in Tariff Rates	<u>\$6.356</u>	<u>\$6.474</u>	<u>\$5.136</u>	<u>\$4.977</u>	<u>\$5.122</u>
<u>Grain Drying Margin Sharing</u>					
Current Adjustment	(\$0.011)	(\$0.011)	(\$0.011)	\$0.000	\$0.000
Prior Filed Gas Cost	<u>(0.011)</u>	<u>(0.011)</u>	<u>(0.011)</u>	<u>0.000</u>	<u>0.000</u>
Change in Grain Drying Sharing Margin	\$0.000	\$0.000	\$0.000	\$0.000	\$0.000
Total Cost of Gas Billed	<u>\$6.345</u>	<u>\$6.463</u>	<u>\$5.125</u>	<u>\$4.977</u>	<u>\$5.122</u>
Net Increase (Decrease) in Gas Costs	<u>\$0.419</u>	<u>\$0.415</u>	<u>\$0.474</u>	<u>\$0.487</u>	<u>\$0.484</u>

**MONTANA-DAKOTA UTILITIES CO.
CURRENT GAS COST ADJUSTMENT - NORTH DAKOTA
RESIDENTIAL AND GENERAL SERVICE
EFFECTIVE DECEMBER 2021**

	<u>Amount</u>
Total Gas Costs 1/	\$98,179,229
Dk Requirements - Firm 2/	16,839,220
Average Cost of Gas per dk	\$5.830
Average Cost of Gas as Adjusted for Losses @ 99.55%	5.856
Less: Gas Cost Level in Rates 3/	5.437
Current Gas Cost Adjustment	\$0.419

- 1/ Includes all pipeline demand and commodity charges, see Exhibit 3a, page 1. See Exhibit 4 for currently effective pipeline rates. Also includes a return on prepaid demand, commodity and cycle storage balances as shown on Exhibit 5.
- 2/ Normalized dk sales for the twelve months ended September 30, 2021, adjusted for losses at .45%.
- 3/ Gas Cost Level in Current Tariff Rates Case No. PU-21-008 effective October 1, 2021:

Cost of Purchased Gas	\$5.413
Adjustment for Distribution Losses	99.55%
Gas Cost Level in Base Tariff Rates	\$5.437

**MONTANA-DAKOTA UTILITIES CO.
CURRENT GAS COST ADJUSTMENT - NORTH DAKOTA
NORTH DAKOTA - OPTIONAL SEASONAL - RATE 72
EFFECTIVE DECEMBER 2021**

	<u>Amount</u>
Total Gas Costs 1/	\$98,179,229
Less: Annual MDDQ Costs (Excludes Storage Capacity Reservation)	<u>23,397,466</u>
Total Gas Costs excluding MDDQ	\$74,781,763
Firm Service Requirements 1/	16,839,220
Other Gas Costs per Dk (excluding MDDQ)	\$4.441
<u>Winter - October - May</u> Annual MDDQ Costs	23,397,466
Winter Firm Service Requirements	15,540,438
MDDQ Costs per Winter Dk	\$1.506
Add: Other Gas Costs per Dk	<u>4.441</u>
Winter Seasonal Rate	\$5.947
Winter Seasonal Rate, adjusted for losses 2/	\$5.974
Less: Gas Cost Level in Rates 3/	<u>5.559</u>
Current Gas Cost Adjustment	<u><u>\$0.415</u></u>

1/ Exhibit 3, page 1.

2/ Loss factor of 0.45%.

3/ Gas Cost Level in Current Tariff Rates Case No. PU-21-008 effective October 1, 2021:

	<u>Winter</u>
Cost of Purchased Gas	\$5.534
Adjustment for Distribution Losses	99.55%
Gas Cost Level in Base Tariff Rates	\$5.559

**MONTANA-DAKOTA UTILITIES CO.
CURRENT GAS COST ADJUSTMENT - NORTH DAKOTA
FIRM GENERAL CONTRACTED DEMAND
EFFECTIVE DECEMBER 2021**

<u>Cost of Gas</u>	<u>Amount</u>
Total Gas Costs, Excluding Capacity 1/	\$74,781,763
Residential and General Service dk Requirements 2/	16,839,220
Average Cost of Gas per dk	\$4.441
Average Cost of Gas as Adjusted for Losses @ 99.55%	4.461
Less: Gas Cost Level in Rates 3/	<u>3.987</u>
Current Gas Cost Adjustment	<u><u>\$0.474</u></u>
<u>Capacity Charge</u>	
Current Monthly Capacity Charge 4/	\$10.65
Prior Filed Capacity Charge 3/	<u>10.74</u>
Current Capacity Charge Adjustment	<u><u>(\$0.09)</u></u>

- 1/ Includes all pipeline demand and commodity charges, see Exhibit 3, page 2. See Exhibit 4 for currently effective pipeline rates. Also includes a return on prepaid demand, commodity and cycle storage balances as shown on Exhibit 5.
- 2/ Normalized dk sales for the twelve months ended September 30, 2021, adjusted for losses at .45%.
- 3/ Gas Cost Level in Current Tariff Rates Case No. PU-21-008 effective October 1, 2021:

Cost of Purchased Gas	\$3.969
Adjustment for Distribution Losses	0.9955
Gas Cost Level in Base Tariff Rates	\$3.987
Monthly Capacity Charge	\$10.74

- 4/ Annual MDDQ Costs divided by contracted capacity.

**MONTANA-DAKOTA UTILITIES CO.
CURRENT GAS COST ADJUSTMENT - NORTH DAKOTA
INTERRUPTIBLE
EFFECTIVE DECEMBER 2021**

	<u>Amount</u>
Total Gas Costs 1/	\$28,866,331
Dk Requirements - Interruptible	6,271,847
Average Cost of Gas per dk	\$4.603
Average Cost of Gas as Adjusted for Losses @ 99.55%	4.624
Less: Gas Cost Level in Rates 2/	4.137
Current Gas Cost Adjustment	\$0.487

1/ Includes all pipeline demand and commodity charges, see Exhibit 3, page 2. See Exhibit 4 for currently effective pipeline rates. Also includes a return on prepaid demand, commodity and cycle storage balances as shown on Exhibit 5.

2/ Gas Cost Level in Current Tariff Rates Case No. PU-21-008 effective October 1, 2021:

Cost of Purchased Gas	\$4.118
Adjustment for Distribution Losses	99.55%
Gas Cost Level in Base Tariff Rates	\$4.137

MONTANA-DAKOTA UTILITIES CO.
CURRENT GAS COST ADJUSTMENT - NORTH DAKOTA
AIR FORCE INTERRUPTIBLE
EFFECTIVE DECEMBER 2021

	<u>Amount</u>
Total Gas Costs 1/	\$1,825,066
Dk Requirements - Air Force Interruptible	396,550
Average Cost of Gas per dk	\$4.602
Less: Gas Cost Level in Rates 2/	<u>4.118</u>
Current Gas Cost Adjustment	<u><u>\$0.484</u></u>

1/ Includes all pipeline demand and commodity charges, see Exhibit 3, page 2. See Exhibit 4 for currently effective pipeline rates. Also includes a return on prepaid demand, commodity and cycle storage balances as shown on Exhibit 5.

2/ Gas Cost Level in Current Tariff Rates Case No. PU-21-008 effective October 1, 2021:

Cost of Purchased Gas	\$4.118
-----------------------	---------

**MONTANA-DAKOTA UTILITIES CO.
SUMMARY OF FIRM DK DELIVERIES, CAPACITY AND
CALCULATION OF INTERRUPTIBLE DEMAND
EFFECTIVE DECEMBER 2021**

	<u>Normalized Firm Dk Deliveries 1/</u>	<u>Percent Firm</u>
Montana	10,138,175	27.591730%
North Dakota	16,839,220	45.829077%
South Dakota	7,105,679	19.338587%
Wyoming	2,660,454	7.240606%
Total	36,743,528	100.000000%

	<u>Total Capacity 2/</u>	<u>%</u>
Montana	127,516	29.791509%
North Dakota	183,120	42.782248%
South Dakota	83,685	19.551291%
Wyoming	33,707	7.874952%
Total	428,028	100.000000%

INTERRUPTIBLE

	<u>Dk volumes</u>		<u>100% Load Factor MDDQ</u>
Montana	3,716,416	3/	10,182
North Dakota	6,271,847	4/	17,183
ND AFB	396,550	5/	1,086
South Dakota	1,731,859	6/	4,745
Wyoming	2,737,179	7/	7,499
Total	14,853,851		40,695

- 1/ Normalized firm sales volumes for the twelve months ended September 30, 2021, adjusted for losses.
- 2/ Required capacity reservation.
- 3/ Reflects level of interruptible dk volumes included in Docket No. 2020.06.076
- 4/ Reflects level of interruptible dk volumes included in Case No. PU-20-379, excluding the Air Force.
- 5/ Reflects level of interruptible dk for Minot Air Force Base in Case No. PU-20-379.
- 6/ Reflects level of interruptible dk volumes included in Docket No. NG15-005.
- 7/ Reflects level of interruptible dk volumes included in Docket No. 30013-351-GR-19.

	<u>Loss Factors</u>	<u>Inverse</u>
Montana	0.72%	99.28%
North Dakota	0.45%	99.55%
South Dakota	1.00%	99.00%
Wyoming	0.68%	99.32%

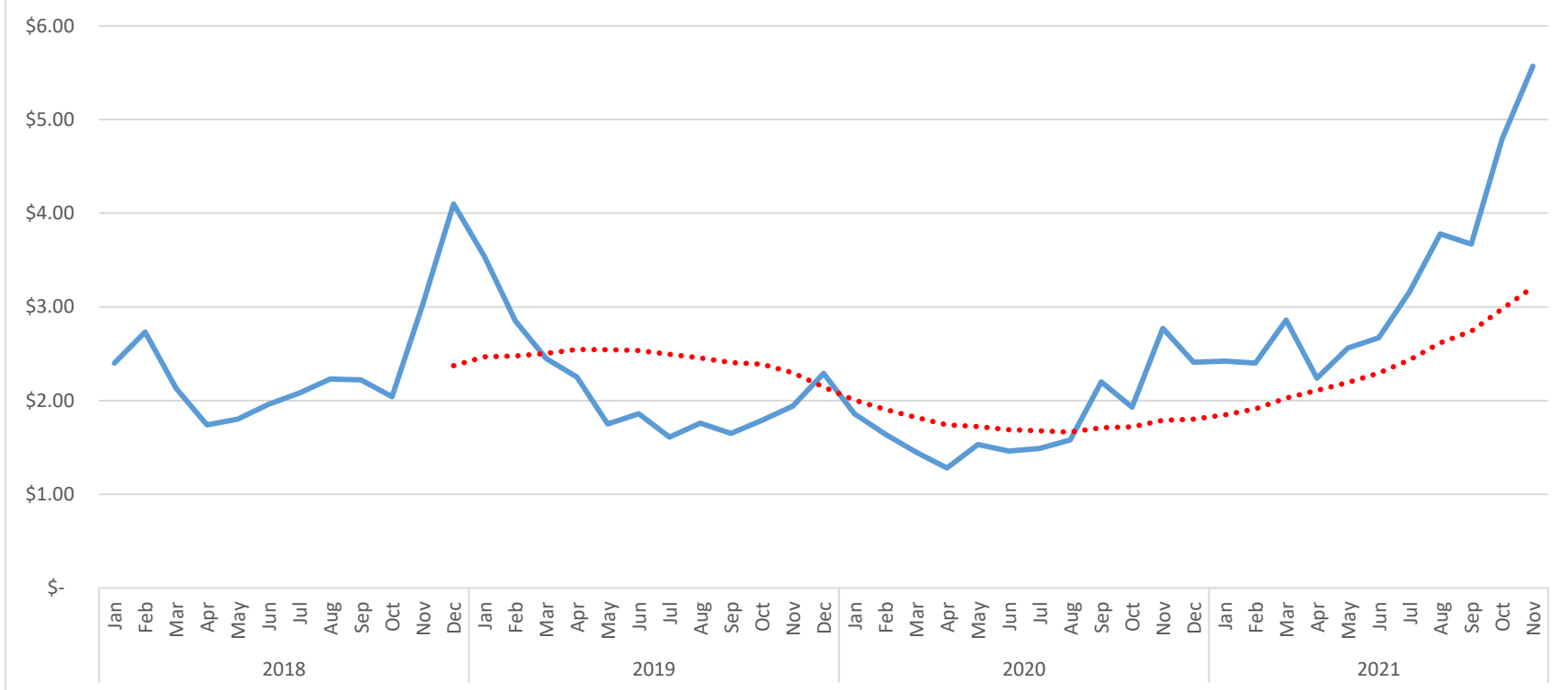
**Montana-Dakota Utilities Co.
Market Conditions for Regional Natural Gas
December 2021**

The established monthly price for Rocky Mountain CIG Index for this month expected to decrease by \$0.26/MMBTU to \$5.31/MMBTU in December 2021 from \$5.57/MMBTU in November 2021. The CIG Rocky Mountain Index is based on a price discovery survey by several natural gas periodicals, including “Inside FERC Gas Market” report and “Gas Daily” by McGraw-Hill Companies, of prices paid by willing sellers and buyers of quantities of gas in that region. That price is reflective of natural gas prices in the Rocky Mountain region and indicative of the supplies Montana-Dakota purchases for its requirements.

The EIA reported nationwide storage levels as of October 22, 2021 at 3.4 percent below the five-year average and 10.2 percent below last year’s balance.

The Department of Energy’s (DOE) Energy Information Administration (EIA) provides various publications on energy issues. The information is available on the DOE website: <http://www.eia.doe.gov>.

CIG Rocky Mountains Index Monthly Gas Prices \$/MMBTU



From Inside FERC Gas Market Report

• • • 12-Month Rolling Average

Annual Averages

2018	\$	2.37
2019	\$	2.15
2020	\$	1.80
2021	\$	3.28

MONTANA-DAKOTA UTILITIES CO.
CURRENT GAS COST ADJUSTMENT - NORTH DAKOTA
NORTH DAKOTA GAS UTILITY
EFFECTIVE DECEMBER 2021

	<u>Requirements</u>	<u>Per Unit Cost</u>	<u>Amount</u>
<u>RESIDENTIAL AND GENERAL SERVICE</u>			
<i>Demand Costs - MDDQ</i>	183,120		
<i>Transportation & Storage Costs - Dk</i>	16,839,220		
<i>Commodity Costs - Dk</i>	16,839,220		
<i>Return on Rate Base</i>			
Demand Charges			\$99,468
Prepaid Commodity Balances			22,822
Cycle Storage Balances			<u>236,229</u>
<i>Total Return</i>			\$358,519
<i>Total Gas Costs - North Dakota only</i>			<u><u>\$98,179,229</u></u>
<u>INTERRUPTIBLE</u>			
<i>Demand Costs - MDDQ</i>	17,183		
<i>Transportation & Storage Costs - Dk</i>	6,271,847		
<i>Commodity Costs - Dk</i>	6,271,847		
<i>Return on Rate Base</i>			
Demand Charges			\$9,334
Prepaid Commodity Balances			2,141
Cycle Storage Balances			<u>22,166</u>
<i>Total Return</i>			\$33,641
<i>Total Gas Costs - North Dakota only</i>			<u><u>\$28,866,331</u></u>
<u>AIR FORCE INTERRUPTIBLE</u>			
<i>Demand Costs - MDDQ</i>	1,086		
<i>Transportation & Storage Costs - Dk</i>	396,550		
<i>Commodity Costs - Dk</i>	396,550		
<i>Return on Rate Base</i>			
Demand Charges			\$590
Prepaid Commodity Balances			135
Cycle Storage Balances			<u>1,401</u>
<i>Total Return</i>			\$2,126
<i>Total Gas Costs - North Dakota only</i>			<u><u>\$1,825,066</u></u>

MONTANA-DAKOTA UTILITIES CO.
COMPUTATION OF CURRENT GAS COST ADJUSTMENT
TOTAL SYSTEM COSTS
EFFECTIVE DECEMBER 2021

	<u>Quantity</u>		<u>Tariff Rate</u>	<u>Amount</u>
System Demand Charges				
Transportation Capacity Reservation (MDDQ)				
WBI FT-1	359,498	dk/Month	\$9.84165	\$42,456,642
WBI FT-1 (Valley Exp)		dk/Month	18.90563	
WBI FT-1 (Black Hills Exp)		dk/Month	12.10920	
WBI (Capacity Release)			1/	
NW T-FTG-1		dk/Month	10.40075	
Black Hills Gas		dk/Month	0.05325	
South Dakota Interstate Pipeline		dk/Month	10.41664	
Supplemental Transportation Capacity Reservation (MDDQ)				
Northern Border et. al.		dk/Month	12.98180	
Viking Gas Transmission		dk/Month	3.80600	
Viking Gas Transmission (Release) 2/		dk/Month	5.19000	
Storage Capacity Reservation (MDDQ)				
WBI FTN-1		dk/Month	0.27069	
WBI FS-1 Capacity Reservation		dk/Month	0.02347	
WBI FS-1 Deliverability Reservation		dk/Month	2.06592	
Total System Contracted Capacity		MDDQ		<u><u>\$63,770,176</u></u>
System Commodity Charges				
Transportation Charges				
WBI FT-1 Commodity		dk	\$0.02597	
WBI FT-1 Commodity (Black Hills Exp)		dk	0.00120	
NW T-FTG-1 Commodity		dk	0.07539	
Black Hills Gas Commodity		dk	0.54000	
Viking Gas Transmission		dk	0.01480	
Fuel Charges				
WBI - Fuel - Transportation		dk		
NW - Fuel - Transportation		dk		
NB - Fuel - Transportation		dk		
WBI - Electric Power		dk	0.00926	
Storage Charges				
WBI FS-1 Injection		dk	0.01000	
WBI FS-1 Withdrawal		dk	0.01000	
WBI - Fuel - Storage		dk		
WBI - Electric Power		dk	0.00342	
Subtotal - Transportation Costs		dk		
Gas Commodity Charges				
Gas Commodity		dk		
Total System Commodity Cost of Gas	36,743,528	dk		<u><u>\$153,920,293</u></u>

1/ Capacity release estimated based on actual releases for the 12 months ending July 2021.

2/ Seasonal capacity release for November 2021 - October 2022 at an average price of \$5.19 per dk/month.

**MONTANA-DAKOTA UTILITIES CO.
SUMMARY OF PIPELINE RATES**

Pipeline Rate Changes Since The Last Filing Submitted

Viking Gas Transmission Co. Docket No.

On October 29, 2021, Viking Gas Transmission Co. filed its Semi-Annual adjustment to its fuel and loss retention percentages in Docket No. RP22-4-000 to be effective November 1, 2021.

Approximate impact on Montana-Dakota's cost of gas: 0.0 cents per dk for North Dakota.

Pipeline Rate Calculations

Calculation of Northern Border Et Al Rate - Exhibit 4, page 2

Calculation of Northwestern Energy Demand and Commodity Charges - Exhibit 4, page 3

Calculation of South Dakota Intrastate Pipeline Transportation Charges - Exhibit 4, page 4

Calculation of Black Hills Gas Transportation Charges - Exhibit 4, page 5

Schedule Of Applicable Effective Pipeline Rates

WBI Energy Transmission, Inc. - Exhibit 4, pages 6 - 11 for Schedules FT-1, FT-1 (Valley Expansion), FTN-1, and FS-1.

Northern Border Pipeline Company - Exhibit 4, page 12 for Schedule T-1.

Foothills Pipe Lines, Ltd. - Billed on a cost of service basis so there are no tariff sheets.

NOVA Gas Transmission - Exhibit 4, pages 13-14 for Schedule FT-D.

NorthWestern Energy - Exhibit 4, page 15 for Schedule T-FTG-1.

South Dakota Intrastate Pipeline - Exhibit 4, page 16 for Rate 1.

Black Hills Gas Distribution, LLC - Exhibit 4, Page 17 for Schedule TC.

Viking Gas Transmission Company - Exhibit 4, Page 18 - 19 for Category 3 FT-A.

**MONTANA-DAKOTA UTILITIES CO.
CALCULATION OF NORTHERN BORDER ET AL RATE
EFFECTIVE DECEMBER 2021**

Northern Border 1/	
Monchy to Mina Mileage	506.0943
Maximum Rate (Daily)	<u>\$0.0245</u>
Maximum Rate Per 100 Miles	\$0.1240
Foothills (FT) Zone 9	
Rate (Canadian GJ/d) 2/	\$0.1810
GJ/d conversion to MMBtu	1.0551
Currency Exchange Rate 3/	<u>0.8085</u>
	0.1544
NOVA - FT-D	
Demand Rate (Canadian GJ/d) 4/	\$0.1740
GJ/d conversion to MMBtu	1.0551
Currency Exchange Rate 3/	<u>0.8085</u>
	0.1484
Northern Border Et Al Rate (dk/Day)	<u><u>\$0.4268</u></u>
Northern Border Et Al Rate (dk/Month)	<u><u>\$12.9818</u></u>

- 1/ T-1 & T-1B Daily Reservation Rate, Port of Morgan, MT to Ventura, IA effective January 1, 2020. See Exhibit 4, page 12.
- 2/ Rate Schedule FT, Firm Service Zone 9, rates effective January 1, 2021.
- 3/ Exchange rate per November 1, 2021 Gas Daily.
- 4/ FT-D Demand Rate per Month, Empress/McNeill Border, rates effective June 1, 2021 (expressed as a daily rate). Includes a 5% discount rate based on 3-4 year term contract expiring 12/31/2021. See Exhibit 4, page 13-14.

**MONTANA-DAKOTA UTILITIES CO.
NORTHWESTERN ENERGY DEMAND AND COMMODITY CHARGES
EFFECTIVE DECEMBER 2021**

<u>Demand:</u>	<u>Billing Determinants</u>	<u>Rate</u>	<u>Annual Charge</u>
Monthly Meter Charges 1/	12	\$393.75	\$4,725
MDDQ 2/	10,700	10.363950	1,330,731
			<u>1,335,456</u>
Demand charge per dk			<u><u>\$10.40075</u></u>
<u>Commodity: 3/</u>			\$0.07539

1/ One meter rated at >30,000 cubic feet per hour.

2/ Firm Transportation Reservation Rate (T-FTG-1), see Exhibit 4, page 15.
57th Revised Sheet No. 80.1, effective July 1, 2021.

3/ Firm Transmission Commodity Rate (T-FTG-1)
57th Revised Sheet No. 80.1, effective July 1, 2021.

Transportation (max)	\$0.060567
GTAC	<u>0.014824</u>
Total T-FTG-1 Rate (max)	<u><u>\$0.075391</u></u>

**MONTANA-DAKOTA UTILITIES CO.
SOUTH DAKOTA INTRASTATE PIPELINE TRANSPORTATION CHARGES
EFFECTIVE DECEMBER 2021**

<u>Demand:</u>	Monthly Rate 1/	Daily Capacity 2/	Total
MDDQ	\$170,620.58		
Estimated Interruptible Credit 3/	(52,600.00)		
	118,020.58	11,330	\$10.41664

1/ SD Intrastate Pipeline 2nd Revised Sheet No. 1 effective November 1, 2019 through August 31, 2023, see Exhibit 4, page 16.

2/ The design day Dk for Montana-Dakota Utilities Co. on Firm Transportation Service.

Design day volumes are not the total pipeline capacity. However, Montana-Dakota is the only firm customer on SDIP, therefore Montana-Dakota is contracted to pay the full monthly rate.

3/ Revenue credit based on average of the actual credits received for the 12 months ending July 2021.

**MONTANA-DAKOTA UTILITIES CO.
BLACK HILLS GAS TRANSPORTATION CHARGES
EFFECTIVE DECEMBER 2021**

<u>Demand:</u>	<u>Billing Determinants</u>	<u>Rate</u>	<u>Total</u>
Administrative Fee 1/	12	\$213	\$2,556
Demand charge per dk/Month	4,000		<u>\$0.05325</u>
<u>Commodity: 2/</u>			
Transportation			<u>\$0.5400</u>

1/ One meter @ \$114/meter and Off-system Firm Transport fee @ \$99/meter. Black Hills WY Gas Section B, First Sheet No. 11, see Exhibit 4, page 17.

2/ Discount Agreement for Montana-Dakota Utilities Co. on Firm Transportation Service Agreement #6001587 effective November 1, 2020 through October 31, 2022.

NOTICE OF CURRENTLY EFFECTIVE RATES

(ALL RATES ARE STATED IN CENTS PER DEKATHERM OR EQUIVALENT DEKATHERM AS INDICATED)

RATE SCHEDULE	UNIT	BASE TARIFF RATE	TOP THROUGHPUT SURCHARGE	GAS SUPPLY REALIGNMENT SURCHARGE	BASE TARIFF RATE PLUS SURCHARGES

RATE SCHEDULE FT-1					

RESERVATION CHARGE					
MAXIMUM DAILY DELIVERY QUANTITY (MDDQ)					
MAXIMUM	RATE PER EQV. DKT PER MO.	984.165	N.A.	N.A.	984.165
MINIMUM	RATE PER EQV. DKT PER MO	0.000	N.A.	N.A.	0.000
COMMODITY CHARGE					
MAXIMUM A/B/C/	RATE PER DKT	2.477	N.A.	N.A.	2.477
MINIMUM A/B/C/	RATE PER DKT	2.477	N.A.	N.A.	2.477
SCHEDULED OVERRUN CHARGE					
MAXIMUM A/B/C/	RATE PER DKT	34.367	N.A.	N.A.	34.367
MINIMUM A/B/C/	RATE PER DKT	2.477	N.A.	N.A.	2.477
VOLUMETRIC CAPACITY RELEASE CHARGE					
MAXIMUM	RATE PER DKT	32.356	N.A.	N.A.	32.356
MINIMUM	RATE PER DKT	0.000	N.A.	N.A.	0.000

-
- A/ SHIPPER MUST REIMBURSE TRANSPORTER IN-KIND FOR TRANSPORTATION FUEL USE AND LOST AND UNACCOUNTED FOR GAS. THE APPLICABLE PERCENTAGES ARE REFLECTED ON SHEET NO. 21A. THESE PERCENTAGES SHALL BE APPLIED TO THE APPLICABLE QUANTITIES OF GAS TENDERED TO TRANSPORTER FOR SHIPPER'S ACCOUNT AT THE RECEIPT POINT(S) INTO TRANSPORTER'S TRANSMISSION FACILITIES.
 - B/ SHIPPER MUST REIMBURSE TRANSPORTER FOR ELECTRIC POWER USED FOR TRANSPORTATION. THE APPLICABLE RATE IS REFLECTED ON SHEET NO. 21B. THIS RATE SHALL BE APPLIED TO THE APPLICABLE QUANTITIES OF GAS TENDERED TO TRANSPORTER FOR SHIPPER'S ACCOUNT AT THE RECEIPT POINT(S) INTO TRANSPORTER'S TRANSMISSION FACILITIES.
 - C/ SHIPPER MUST REIMBURSE TRANSPORTER FOR THE ACA SURCHARGE. SUCH SURCHARGE SHALL BE THE ACA UNIT CHARGE SPECIFIED IN THE ANNUAL NOTICE ISSUED BY THE FERC ENTITLED "FY [YEAR] GAS ANNUAL CHARGES CORRECTION FOR ANNUAL CHARGES UNIT CHARGE."

NOTICE OF CURRENTLY EFFECTIVE RATES

(ALL RATES ARE STATED IN CENTS PER DEKATHERM OR EQUIVALENT DEKATHERM AS INDICATED)

RATE SCHEDULE	UNIT	BASE TARIFF RATE	TOP THROUGHPUT SURCHARGE	GAS SUPPLY REALIGNMENT SURCHARGE	BASE TARIFF RATE PLUS SURCHARGES

RATE SCHEDULE FT-1 (VALLEY EXPANSION) A/B					

RESERVATION CHARGE					
MAXIMUM DAILY DELIVERY QUANTITY (MDDQ)					
MAXIMUM	RATE PER EQV. DKT PER MO.	1890.563	N.A.	N.A.	1890.563
MINIMUM	RATE PER EQV. DKT PER MO.	0.000	N.A.	N.A.	0.000
COMMODITY CHARGE					
MAXIMUM C/D/E/	RATE PER DKT	2.477	N.A.	N.A.	2.477
MINIMUM C/D/E/	RATE PER DKT	2.477	N.A.	N.A.	2.477
SCHEDULED OVERRUN CHARGE					
MAXIMUM C/D/E/	RATE PER DKT	34.367	N.A.	N.A.	34.367
MINIMUM C/D/E/	RATE PER DKT	2.477	N.A.	N.A.	2.477
VOLUMETRIC CAPACITY RELEASE CHARGE					
MAXIMUM	RATE PER DKT	62.155	N.A.	N.A.	62.155
MINIMUM	RATE PER DKT	0.000	N.A.	N.A.	0.000

-
- A/ APPLICABLE ONLY FOR INCREMENTAL CAPACITY CERTIFICATED IN DOCKET NO. CP17-257-000.
 - B/ REFER TO RATE SCHEDULE FT-1 FIRM TRANSPORTATION SERVICE FOR ALL TERMS AND CONDITIONS OF SERVICE.
 - C/ SHIPPER MUST REIMBURSE TRANSPORTER IN-KIND FOR TRANSPORTATION FUEL USE AND LOST AND UNACCOUNTED FOR GAS. THE APPLICABLE PERCENTAGES ARE REFLECTED ON SHEET NO. 21A. THESE PERCENTAGES SHALL BE APPLIED TO THE APPLICABLE QUANTITIES OF GAS TENDERED TO TRANSPORTER FOR SHIPPER'S ACCOUNT AT THE RECEIPT POINT(S) INTO TRANSPORTER'S TRANSMISSION FACILITIES.
 - D/ SHIPPER MUST REIMBURSE TRANSPORTER FOR ELECTRIC POWER USED FOR TRANSPORTATION. THE APPLICABLE RATE IS REFLECTED ON SHEET NO. 21B. THIS RATE SHALL BE APPLIED TO THE APPLICABLE QUANTITIES OF GAS TENDERED TO TRANSPORTER FOR SHIPPER'S ACCOUNT AT THE RECEIPT POINT(S) INTO TRANSPORTER'S TRANSMISSION FACILITIES.
 - E/ SHIPPER MUST REIMBURSE TRANSPORTER FOR THE ACA SURCHARGE. SUCH SURCHARGE SHALL BE THE ACA UNIT CHARGE SPECIFIED IN THE ANNUAL NOTICE ISSUED BY THE FERC ENTITLED "FY [YEAR] GAS ANNUAL CHARGES CORRECTION FOR ANNUAL CHARGES UNIT CHARGE."

NOTICE OF CURRENTLY EFFECTIVE RATES

(ALL RATES ARE STATED IN CENTS PER DEKATHERM OR EQUIVALENT DEKATHERM AS INDICATED)

RATE SCHEDULE	UNIT	BASE TARIFF RATE	TOP THROUGHPUT SURCHARGE	GAS SUPPLY REALIGNMENT SURCHARGE	BASE TARIFF RATE PLUS SURCHARGES

RATE SCHEDULE FTN-1					

RESERVATION CHARGE					
MAXIMUM DAILY DELIVERY QUANTITY (MDDQ)					
MAXIMUM	RATE PER EQV. DKT PER MO.	27.069	N.A.	N.A.	27.069
MINIMUM	RATE PER EQV. DKT PER MO.	1.203	N.A.	N.A.	1.203
VOLUMETRIC CAPACITY RELEASE CHARGE					
MAXIMUM	RATE PER DKT	0.890	N.A.	N.A.	0.890
MINIMUM	RATE PER DKT	0.040	N.A.	N.A.	0.040

NOTICE OF CURRENTLY EFFECTIVE RATES

(ALL RATES ARE STATED IN CENTS PER DEKATHERM OR EQUIVALENT DEKATHERM AS INDICATED)

RATE SCHEDULE	UNIT	BASE TARIFF RATE	TOP THROUGHPUT SURCHARGE	GAS SUPPLY REALIGNMENT SURCHARGE	BASE TARIFF RATE PLUS SURCHARGES

RATE SCHEDULE FS-1					

CAPACITY RESERVATION CHARGE					
MAXIMUM	RATE PER EQV. DKT PER MO.	2.347	N.A.	N.A.	2.347
MINIMUM	RATE PER EQV. DKT PER MO.	0.000	N.A.	N.A.	0.000
CAPACITY DELIVERABILITY CHARGE					
MAXIMUM	RATE PER EQV. DKT PER MO.	206.592	N.A.	N.A.	206.592
MINIMUM	RATE PER EQV. DKT PER MO.	0.000	N.A.	N.A.	0.000
INJECTION CHARGE					
MAXIMUM A/B/	RATE PER DKT	1.000	N.A.	N.A.	1.000
MINIMUM A/B/	RATE PER DKT	1.000	N.A.	N.A.	1.000
WITHDRAWAL CHARGE					
MAXIMUM A/B/	RATE PER DKT	1.000	N.A.	N.A.	1.000
MINIMUM A/B/	RATE PER DKT	1.000	N.A.	N.A.	1.000
SCHEDULED OVERRUN CHARGE					
INJECTION					
MAXIMUM A/B/	RATE PER DKT	25.644	N.A.	N.A.	25.644
MINIMUM A/B/	RATE PER DKT	1.000	N.A.	N.A.	1.000
WITHDRAWAL					
MAXIMUM A/B/	RATE PER DKT	25.644	N.A.	N.A.	25.644
MINIMUM A/B/	RATE PER DKT	1.000	N.A.	N.A.	1.000

-
- A/ SHIPPER MUST REIMBURSE TRANSPORTER IN-KIND FOR STORAGE FUEL USE AND LOST AND UNACCOUNTED FOR GAS. THE APPLICABLE PERCENTAGES ARE REFLECTED ON SHEET NO. 21A. THESE PERCENTAGES SHALL BE APPLIED TO THE APPLICABLE QUANTITIES OF GAS INJECTED AND/OR WITHDRAWN BY TRANSPORTER FOR SHIPPER'S ACCOUNT AT TRANSPORTER'S STORAGE FACILITIES.
- B/ SHIPPER MUST REIMBURSE TRANSPORTER FOR ELECTRIC POWER USED FOR STORAGE. THE APPLICABLE RATE IS REFLECTED ON SHEET NO. 21B. THIS RATE SHALL BE APPLIED TO THE APPLICABLE QUANTITIES OF GAS INJECTED AND/OR WITHDRAWN BY TRANSPORTER FOR SHIPPER'S ACCOUNT AT TRANSPORTER'S STORAGE FACILITIES.

NOTICE OF CURRENTLY EFFECTIVE RATES

 FUEL USE AND LOST AND UNACCOUNTED FOR GAS ("L&U") REIMBURSEMENT PERCENTAGES

TRANSPORTATION - RATE SCHEDULES FT-1 AND IT-1

	<u>CURRENT PERCENTAGE</u>	<u>DEFERRAL PERCENTAGE</u>	<u>TOTAL PERCENTAGE</u>
FUEL USE REIMBURSEMENT	1.623%	(0.045)%	1.578%
L&U REIMBURSEMENT	0.136%	0.285%	0.421%

STORAGE - RATE SCHEDULES FS-1 AND IS-1

	<u>CURRENT PERCENTAGE</u>	<u>DEFERRAL PERCENTAGE</u>	<u>TOTAL PERCENTAGE</u>
FUEL USE REIMBURSEMENT	1.066%	0.052%	1.118%
L&U REIMBURSEMENT	(0.158)%	(0.075)%	(0.233)%

NOTICE OF CURRENTLY EFFECTIVE RATES

ELECTRIC POWER REIMBURSEMENT RATES (CENTS/DKT)

TRANSPORTATION - RATE SCHEDULES FT-1 AND IT-1

	<u>CURRENT RATE</u>	<u>DEFERRAL RATE</u>	<u>TOTAL RATE</u>
ELECTRIC POWER REIMBURSEMENT	0.899	0.027	0.926

STORAGE - RATE SCHEDULES FS-1 AND IS-1

	<u>CURRENT RATE</u>	<u>DEFERRAL RATE</u>	<u>TOTAL RATE</u>
ELECTRIC POWER REIMBURSEMENT	0.402	(0.060)	0.342

STATEMENT OF RATES

Rate Schedule -----	Long-Term Base Tariff Rate (per 100 Dth-Miles) 1/ -----
T-1 and T-1B	
Daily Reservation Rate - Port of Morgan, MT to Ventura, IA	
Maximum	\$0.0245
Minimum	\$0.0000
Daily Reservation Rate - Ventura, IA to North Hayden, IN	
Maximum	\$0.0263
Minimum	\$0.0000
Commodity Rate - Port of Morgan, MT to North Hayden, IN	
Maximum	\$0.0004
Minimum	\$0.0004

1/ Applicable to any Rate Schedule T-1 U.S. Shippers Service Agreement or any Rate Schedule T-1B Service Agreement with a primary term of at least twelve consecutive months.

Final June-December 2021 Rates

Table of Rates, Tolls and Charges - Year Two Transition

Service	Rates, Tolls and Charges		
1. Rate Schedule FT-R	Refer to Attachment "1" for applicable FT-R Demand Rate per month based on a three-year term (Price Point "B") & Surcharge for each Receipt Point Average Firm Service Receipt Price (AFSRP) \$239.56 / 10³m³ / month		
2. Rate Schedule FT-RN	Refer to Attachment "1" for applicable FT-RN Demand Rate per month & Surcharge for each Receipt Point		
3. Rate Schedule FT-D ¹	Refer to Attachment "2" for applicable FT-D Demand Rate per month based on a one year term (Price Point "Z") & Surcharge for each Group 1 or Group 2 Delivery Point Average FT-D Demand Rate for Group 1 Delivery Points \$5.59 / GJ / month FT-D Demand Rate for Group 2 Delivery Points \$8.18 / GJ / month FT-D Demand Rate for Group 3 Delivery Points \$9.82 / GJ / month		
4. Rate Schedule STFT	STFT Bid Price = Minimum of 100% of the applicable FT-D Demand Rate based on a one year term (Price Point "Z") for each Group 1 Delivery Point		
5. Rate Schedule FT-DW	FT-DW Bid Price = Minimum of 125% of the applicable FT-D Demand Rate based on a three year term (Price Point "Y") for each Group 1 Delivery Point		
6. Rate Schedule FT-P ¹	Refer to Attachment "3" for applicable FT-P Demand Rate per month		
7. Rate Schedule IT-R	Refer to Attachment "1" for applicable IT-R Rate for each Receipt Point		
8. Rate Schedule IT-D ¹	Refer to Attachment "2" for applicable IT-D Rate for each Delivery Point		
9. Rate Schedule FCS	The FCS Charge is determined in accordance with Attachment "1" to the applicable Schedule of Service		
10. Rate Schedule PT	<u>Schedule No.</u>	<u>PT Rate</u>	<u>PT Gas Rate</u>
	9021-01000-0	\$1,030 / day	3.3 10 ³ m ³ / day
	9021-01000-1	\$2,840 / day	12.6 10 ³ m ³ / day
11. Rate Schedule OS	<u>Schedule No.</u>	<u>Charge</u>	
	2019400720	\$107.15 / 10 ³ m ³ / month	
	2011475772	\$9,250 / month	
	2020012304	\$647 / month	
	2003004522	Applicable IT-R and IT-D Rate	
	2011476052 /	\$0.2689 / GJ subject to	
	2011476054	\$717,000 Minimum Annual Charge	
	2017887638 / 2011476092	\$0.095 / GJ and	
	2016721799 / 2016759254	\$1,000 / month	
12. Rate Schedule CO ₂	<u>Tier</u>	<u>CO₂ Rate</u>	
	1	\$575.25 / 10 ³ m ³	
	2	\$455.14 / 10 ³ m ³	
	3	\$295.33 / 10 ³ m ³	
13. Monthly Abandonment Surcharge ²		\$7.17 / 10 ³ m ³ / month	\$0.19 / GJ / month
14. Daily Abandonment Surcharge ³		\$0.24 / 10 ³ m ³ / day	\$0.0062 / GJ / day
15. Federal Fuel Charge ⁴	Marketable Natural Gas ⁵		\$0.0783 / m ³

- Service under rate Schedules FT-D, FT-P and IT-D for delivery stations identified in Attachment 2, and rate Schedules OS No. 2011476092, are subject to the ATCO Pipelines Franchise Fees pursuant to paragraph 15.13 of the General Terms and Conditions.
- Monthly Abandonment Surcharge applicable to Rate Schedules FT-R, FT-D, FT-P, FT-RN, FT-DW, and STFT, and the following Rate Schedule OS: 2019400720.
- Daily Abandonment Surcharge applicable to Rate Schedules IT-R, IT-D, the following Rate Schedules OS: 2011476052, 2011476054, 2017887638, 2011476092, 2016721799, 2016759254, 2003004522, and if applicable Over-Run Gas.
- Collected on all deliveries of gas within Alberta pursuant to any Rate Schedule unless NGTL has received a valid exemption certificate pursuant to the *Greenhouse Gas Pollution Pricing Act*.
- See FCN12 Canada Revenue Agency Administrative Position regarding Marketable Natural Gas under Part 1 of the *Greenhouse Gas Pollution Pricing Act*.

Final June-December 2021 Rates

Delivery Point Rates - Year Two Transition

Group 1 Delivery Point Number	Group 1 Delivery Point Name	FT-D Demand Rate Price Point "Z" (\$/GJ/mo)	IT-D Rate (\$/GJ/d)
2000	ALBERTA-B.C. BORDER	5.63	0.2036
31111	ALLIANCE CLAIRMONT INTERCONNECT APN	5.57	0.2014
31110	ALLIANCE EDSON INTERCONNECT APN	5.57	0.2014
31112	ALLIANCE SHELL CREEK INTERCONNECT APGC	5.57	0.2014
1958	EMPRESS BORDER	5.57	0.2014
3886	GORDONDALE BORDER	5.57	0.2014
6404	MCNEILL BORDER	5.57	0.2014

Group 2 Delivery Point Number	Group 2 Delivery Point Name	FT-D Demand Rate Price Point "Z" (\$/GJ/mo)	IT-D Rate (\$/GJ/d)	Subject to ATCO Pipelines Franchise Fees ¹
31000	A.T. PLASTICS SALES APN	8.18	0.2958	Yes
31001	ADM AGRI INDUSTRIES SALES APN	8.18	0.2958	Yes
3880	AECO INTERCONNECTION	8.18	0.2958	
31003	AGRIUM CARSELAND SALES APS	8.18	0.2958	
31002	AGRIUM FT. SASK SALES APN	8.18	0.2958	Yes
31004	AGRIUM REDWATER SALES APN	8.18	0.2958	
31005	AINSWORTH SALES APGP	8.18	0.2958	
31006	AIR LIQUIDE SALES APN	8.18	0.2958	
3820	AITKEN CREEK INTERCONNECT ²	11.03	0.3896	
6126	AITKEN CREEK SOUTH SALES ²	11.03	0.3896	
3214	AKUINU RIVER WEST SALES	8.18	0.2958	
31007	ALBERTA ENVIROFUELS SALES APN	8.18	0.2958	Yes ³
31008	ALBERTA HOSPITAL SALES APN	8.18	0.2958	Yes
3868	ALBERTA-MONTANA BORDER	8.18	0.2958	
3297	ALDER FLATS SOUTH NO 2 SALES	8.18	0.2958	
3059	ALLISON CREEK SALES	8.18	0.2958	
6132	ALTARES SALES ²	11.03	0.3896	
6133	ALTARES SOUTH SALES ²	11.03	0.3896	
31009	ALTASTEEL SALES APN	8.18	0.2958	Yes ³
3562	AMOCO SALES (BP SALES TAP)	8.18	0.2958	
6145	ANDERSON LAKE SALES	8.18	0.2958	
31012	APL JASPER SALES APN	8.18	0.2958	Yes
3488	ARDLEY SALES	8.18	0.2958	
3237	ASPEN SALES	8.18	0.2958	
3662	ATUSIS CREEK EAST SALES	8.18	0.2958	
3216	AURORA NO 2 SALES	8.18	0.2958	
3135	AURORA SALES	8.18	0.2958	
3288	BANTRY SALES	8.18	0.2958	
3423	BASHAW WEST SALES	8.18	0.2958	
31013	BAYMAG SALES APS	8.18	0.2958	
6112	BAY TREE SALES	8.18	0.2958	

NATURAL GAS TARIFF



Canceling 57th Revised Sheet No. 80.1
56th Revised Sheet No. 80.1

Schedule No. T-FTG-1

TRANSPORTATION BUSINESS UNIT
FIRM TRANSPORTATION NATURAL GAS SERVICE

APPLICABILITY: Applicable to Shippers for firm transportation service on the Utility Transmission System under the terms of a Firm Gas Transportation Service Agreement (Agreement) between the Utility Transportation Business Unit (Utility) and Shipper and as subject to Rate Schedule General Terms and Operating Conditions (Rate Schedule GTC-1).

	<u>Total Rate</u>	<u>Tax Portion of Rate</u>	<u>Rate Without Tax</u>
RATES: Net Monthly Bill:			
Monthly Service Charge per Meter:			
Meters Rated @			
<u>Cu. Ft. per hour</u>			
5,000 to 10,000	\$ 123.50		\$ 123.50
10,001 to 30,000	\$ 177.45		\$ 177.45
>30,000	\$ 393.75		\$ 393.75
PLUS:			
Transmission Reservation Rate (MDDQ):			
Maximum Monthly Reservation Rate for Maximum Daily Delivery Quantity (MDDQ)			
	\$ 1.0363950	\$ 0.3241182	\$ 0.7122768
Transmission Commodity Rate (Therm):			
Maximum			
	\$ 0.0060567	\$ 0.0024152	\$ 0.0036415
Minimum			
	\$ 0.0017935		\$ 0.0017935
GTAC Amortization			
	\$ 0.0014824		\$ 0.0014824
Balancing Penalty Rate			
	Higher of \$25.00/ Dekatherm Or 150% of Market Price		

TAX PORTION OF RATE: This rate represents the amount charged to customers for state and local taxes and fees and is separately disclosed on customer's bill.

PLUS:

OTHER APPLICABLE CHARGES: All charges contained on other applicable rate schedules approved by the Public Service Commission of Montana.

GAS TRANSPORTATION ADJUSTMENT CLAUSE: Pursuant to MPSC Order the above GTAC Amortization shall be in effect until the balance is extinguished.

MINIMUM BILL: Per respective contracts.

(continued)

Docket No.: 2020.07.083, Interim Order No. 7787
Staff Approved: June 21, 2021
Tariff Letter No.: 354-G
Agenda No.: 21-06-15

Effective for services rendered on
after July 1, 2021
[Signature]
Administrative Assistant



**STATE OF SOUTH DAKOTA
GAS RATE SCHEDULE**

South Dakota Intrastate Pipeline Company
1415 North Airport Road
Pierre, SD 57501

SD P.U.C. Section 3
2nd Revised Sheet No. 1
Cancelling 1st Revised Sheet No. 1

FIRM TRANSPORTATION SERVICE Rate 1

Transportation rate is \$170,620.58 monthly for Firm Service effective November 1, 2019 through August 31, 2023. I

The Transportation rate is \$160,741.08 monthly for Firm Service effective September 1, 2023, if Transporter has not submitted a new application for rates, with an effective date prior to August 31, 2023. I

Revenue credits shall be applicable as set forth in the Contract for Firm Transportation Service. Service under this Firm Transportation Service Schedule shall be subject to the General Terms And Conditions as stated in Section 5. N
N

Date Filed: October 23, 2019

Effective Date: November 1, 2019

Issued by Lisa A. Murphy, Vice President-Chief Financial Officer

Docket No.: NG17-009



SECTION B – STATEMENT OF RATES - CONTINUED
Firm and Interruptible Transportation Service Rates

Service	Monthly Charge	Base Volumetric Charge	TCJA Amortization Credit	Maximum Volumetric Charge
On-System Firm Transport	\$198.00	\$0.1198	(\$0.0009)	\$0.1189
Off-System Firm Transport	\$99.00	\$0.1198		\$0.1198
Off-System Interruptible Transport	\$99.00	\$0.1198		\$0.1198
Administrative Fee	\$114.00			
Unauthorized Overrun Charge				\$0.8000
Supply Scheduling Charge				\$0.0060
Wyoming Integrity Rider				\$0.0000

All volumetric charges are per therm.

Interruptible Transportation Service is not available to On-System Customers.

Wyoming Integrity Rider is applicable to all maximum rate On-System Transportation Service Customers.

The Minimum Rate for Transportation Service is \$0.0010 per therm.

Fuel and Lost and Unaccounted For Gas Percentages

Casper Division

Transmission Fuel and Lost and Unaccounted For Gas percentage = 1.005%
 Storage Injection Fuel and Lost and Unaccounted For Gas percentage = 2.897%
 Choice Gas Service Distribution Fuel and Lost and Unaccounted For Gas Reconciliation percentage = (0.099)%
 Distribution and Gas Cost Adjustment Fuel and Lost and Unaccounted For Gas percentage = (0.429)%

Cheyenne Division

Distribution and Gas Cost Adjustment Fuel and Lost and Unaccounted For Gas percentage = 1.000%

Gillette Division

Transmission Fuel and Lost and Unaccounted For Gas percentage = 0.350%
 Choice Gas Service Distribution Fuel and Lost and Unaccounted for Gas Reconciliation percentage = 0.828%
 Distribution and Gas Cost Adjustment Fuel and Lost and Unaccounted for Gas percentage = 0.932%

Torrington Division

Choice Gas Service Distribution Fuel and Lost and Unaccounted For Gas Reconciliation percentage = 2.678%
 Distribution and Gas Cost Adjustment Fuel and Lost and Unaccounted For Gas percentage = 0.495%

STATEMENT OF RATES
 (Rates Per Dekatherm)

Currently Effective Term-Differentiated Rates

Rate Schedule	Base Tariff Rate
<hr/>	
Category 1 (Contract Term of Less than 3 Years)	
<hr/>	
Monthly Reservation Rates	
FT-A	
Zone 1-1 Maximum Rate	\$3.9106
Zone 1-1 Minimum Rate	\$0.0000
Zone 1-2 Maximum Rate 1/	\$4.9080
Zone 1-2 Minimum Rate	\$0.0000
Zone 2-2 Maximum Rate	\$2.6118
Zone 2-2 Minimum Rate	\$0.0000
<hr/>	
Category 2 (Contract Term of 3 Years to less than 5 Years)	
<hr/>	
Monthly Reservation Rates	
FT-A	
Zone 1-1 Maximum Rate	\$3.8583
Zone 1-1 Minimum Rate	\$0.0000
Zone 1-2 Maximum Rate	\$4.8330
Zone 1-2 Minimum Rate	\$0.0000
Zone 2-2 Maximum Rate	\$2.5890
Zone 2-2 Minimum Rate	\$0.0000
<hr/>	
Category 3 (Contract Term of 5 or more Years)	
<hr/>	
Monthly Reservation Rates	
FT-A	
Zone 1-1 Maximum Rate	\$3.8060
Zone 1-1 Minimum Rate	\$0.0000
Zone 1-2 Maximum Rate	\$4.7580
Zone 1-2 Minimum Rate	\$0.0000
Zone 2-2 Maximum Rate	\$2.5662
Zone 2-2 Minimum Rate	\$0.0000

1/ Throughout Viking's Statement of Rates and Tariff, "Zone 1-2" shall mean Transportation Service for quantities received in Zone 1 and delivered in Zone 2 or received in Zone 2 and delivered in Zone 1 whether by transport, exchange, or Displacement.

Rate Schedule	Base Tariff Rate	Fuel and Loss Retention Percentages 2/
Commodity Rates 1/		
FT-A – Maximum Rates		
Zone 1-1	\$0.0136	0.83%
Zone 1-2	\$0.0136	0.94%
Zone 2-2	\$0.0136	0.11%
Minimum Rate	\$0.0136	
IT and AOT		
Zone 1-1	\$0.1422	0.83%
Zone 1-2	\$0.1750	0.94%
Zone 2-2	\$0.0995	0.11%
Minimum Rate	\$0.0136	

- 1/ Pursuant to Section 19 of the General Terms and Conditions, the maximum and minimum commodity rates shall be increased to include the Commission-authorized Annual Charge Adjustment unit rate as published on the Commission's Web Site located at <http://www.ferc.gov>.
- 2/ The Fuel and Loss Retention Percentages shall be applicable to all transportation rate schedules and includes the following Gas Lost and Unaccounted For Percentages: 0.00% for Zone 1-1, 0.00% for Zone 1-2, and 0.00% for Zone 2-2. Transportation entirely by Displacement will incur only the Gas Lost and Unaccounted For Percentages.

Rate Schedule	Base Tariff Rate	Adjustment Under Section 27 1/	Rate After Current Adjustment
LMS – Monthly Demand Rate	\$1.0000		\$1.0000
LMS – Daily Overrun Rate	\$0.1750		\$0.1750
LMS – Load Management Cost Reconciliation Adjustment		\$0.0168	

- 1/ Pursuant to Section 27 of the General Terms and Conditions of this Tariff, a mechanism is established to reconcile through surcharges or credits to the Rate Schedule LMS rate, as appropriate, differences between the cost to maintain Company's line pack gas and the amounts Company receives or pays for such gas arising out of the purchase and sale of such gas.

Rate Schedule	Maximum Rate Per Dekatherm	Minimum Rate Per Dekatherm
PAL		
NPL, OPL, and APL Service:		
Daily Commodity Rate	\$0.1750	\$0.0000
RPL Service:		
Daily Reservation Rate	\$0.1750	\$0.0000

**MONTANA-DAKOTA UTILITIES CO.
RETURN ON CYCLE STORAGE BALANCES
AND PREPAID DEMAND AND COMMODITY BALANCES
NORTH DAKOTA GAS
EFFECTIVE DECEMBER 2021**

	General Service		
	Storage Balance 1/	Commodity Balance 2/	Prepaid Demand 1/
October 2021	\$10,051,176	\$491,234	\$5,468,011
November	7,196,845	406,115	4,343,521
December	3,960,739	309,611	1,988,116
January 2022	(164,938)	180,101	(674,791)
February	(3,499,798)	75,416	(2,557,059)
March	(4,129,241)	55,660	(3,591,023)
April	(3,758,578)	67,294	(3,286,514)
May	(1,824,011)	128,015	(1,904,295)
June	835,681	211,496	(50,058)
July	3,597,653	298,187	1,715,119
August	6,367,800	385,135	3,480,296
September	8,701,772	459,431	5,098,129
October	9,394,684	480,807	5,436,214
13 month average	<u>\$2,825,368</u>	<u>\$272,962</u>	<u>\$1,189,667</u>
Rate of Return	6.851%	6.851%	6.851%
Return	\$193,566	\$18,701	\$81,504
Return Requirement	<u>\$236,229</u>	<u>\$22,822</u>	<u>\$99,468</u>

1/ Allocated on percent of Contracted Capacity.

2/ Allocated on Total Normalized Firm Dk Deliveries.

**MONTANA-DAKOTA UTILITIES CO.
COMPUTATION OF (OVER) / UNDER RECOVERED GAS COST ACCOUNT BALANCE
APPLICABLE TO NORTH DAKOTA
FIRM**

	<u>(Over) Under Recovery</u>	<u>Refunds & Other</u>	<u>Interest 1/</u>	<u>Total Net Additions</u>	<u>Actual Dk Sales</u>	<u>Adjustment Per Dk</u>	<u>Total Adjustment Amount</u>	<u>Net Change- Additions less Adjustment</u>	<u>Cumulative Balance</u>
Balance @ July 31, 2021									<u><u>\$13,306,972</u></u>
August	\$829,243	\$0	\$420	\$829,663	276,015	\$1.850	\$510,628	\$319,035	13,626,007
September	584,220	0	344	584,564	306,652	1.850	567,306	17,258	13,643,265
Balance @ September 30, 2021									<u><u>\$13,643,265</u></u>

1/ Interest calculated at Three Month Treasury Bill rate.

**MONTANA-DAKOTA UTILITIES CO.
COMPUTATION OF (OVER) / UNDER RECOVERED GAS COST ACCOUNT BALANCE
APPLICABLE TO NORTH DAKOTA
INTERRUPTIBLE**

	(Over) Under Recovery	Refunds & Other	Interest 1/	Total Net Additions	Actual Dk Sales	Adjustment Per Dk	Total Adjustment Amount	Net Change- Additions less Adjustment	Cumulative Balance
Balance @ July 31, 2021									<u><u>\$339,644</u></u>
August	\$33,507	\$0	\$11	\$33,518	19,433	\$0.276	\$5,364	\$28,154	367,798
September	17,235	0	9	17,244	22,207	0.276	6,129	11,115	378,913
Balance @ September 30, 2021									<u><u>\$378,913</u></u>

1/ Interest calculated at Three Month Treasury Bill rate.

**MONTANA-DAKOTA UTILITIES CO.
COMPUTATION OF (OVER) / UNDER RECOVERED GAS COST ACCOUNT BALANCE
APPLICABLE TO NORTH DAKOTA
AIR FORCE**

	<u>(Over) Under Recovery</u>	<u>Refunds & Other</u>	<u>Interest 1/</u>	<u>Total Net Additions</u>	<u>Actual Dk Sales</u>	<u>Adjustment Per Dk</u>	<u>Total Adjustment Amount</u>	<u>Net Change- Additions less Adjustment</u>	<u>Cumulative Balance</u>
Balance @ July 31, 2021									<u><u>\$267,470</u></u>
August	\$41,767	\$0	\$8	\$41,775	4,093	\$0.501	\$2,051	\$39,724	307,194
September	19,524	0	8	19,532	5,061	0.501	2,536	16,996	324,190
Balance @ September 30, 2021									<u><u>\$324,190</u></u>

1/ Interest calculated at Three Month Treasury Bill rate.

**MONTANA-DAKOTA UTILITIES CO.
COMPUTATION OF (OVER) / UNDER RECOVERED GAS COST ACCOUNT BALANCE
APPLICABLE TO NORTH DAKOTA
CONTRACTED DEMAND**

	<u>(Over) Under Recovery</u>	<u>Refunds & Other</u>	<u>Interest 1/</u>	<u>Total Net Additions</u>	<u>Actual Dk Sales</u>	<u>Adjustment Per Dk</u>	<u>Total Adjustment Amount</u>	<u>Net Change- Additions less Adjustment</u>	<u>Cumulative Balance</u>
Balance @ July 31, 2021									<u><u>\$177,743</u></u>
August	\$40,915	\$0	\$6	\$40,921	17,114	\$0.353	\$6,043	\$34,878	212,621
September	34,844	0	5	34,849	13,228	0.353	4,669	30,180	242,801
Balance @ September 30, 2021									<u><u>\$242,801</u></u>

1/ Interest calculated at Three Month Treasury Bill rate.