

April 19, 2022

Nicole Darrington  
Natural Resource Conservation Service  
Watford City Field Office  
109 5<sup>th</sup> Street SW, Box 583  
Watford City, ND 58854

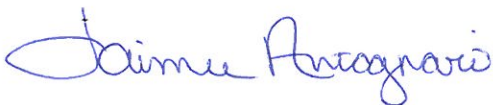
**RE: Bridger Pipeline, LLC – Bridger 16” Crude Oil Pipeline**

Bridger Pipeline, LLC (“Bridger”) plans to submit a Certificate of Corridor Compatibility Application and Route Permit Application, requesting permission from the North Dakota Public Service Commission (“Commission”) for the construction of an approximately 145-mile crude oil supply pipeline (“Project”). It originates from a location near Johnson’s Corner, North Dakota and terminates at the Sandstone Terminal located near Plevna, MT. The North Dakota portion of the Project is located entirely within McKenzie and Golden Valley Counties.

Keitu Engineers and Consultants, Inc. (“Keitu”) is contracted by Bridger to submit the Amended Certificate of Corridor Compatibility and Route Application in March 2022. The Commission requires applicants to contact relevant agencies for comment on the Project.

Enclosed is a map of the entire length of the pipeline route intended for your review. We respectfully request that any concerns known in the area is brought to our attention to ensure we focus on those items.

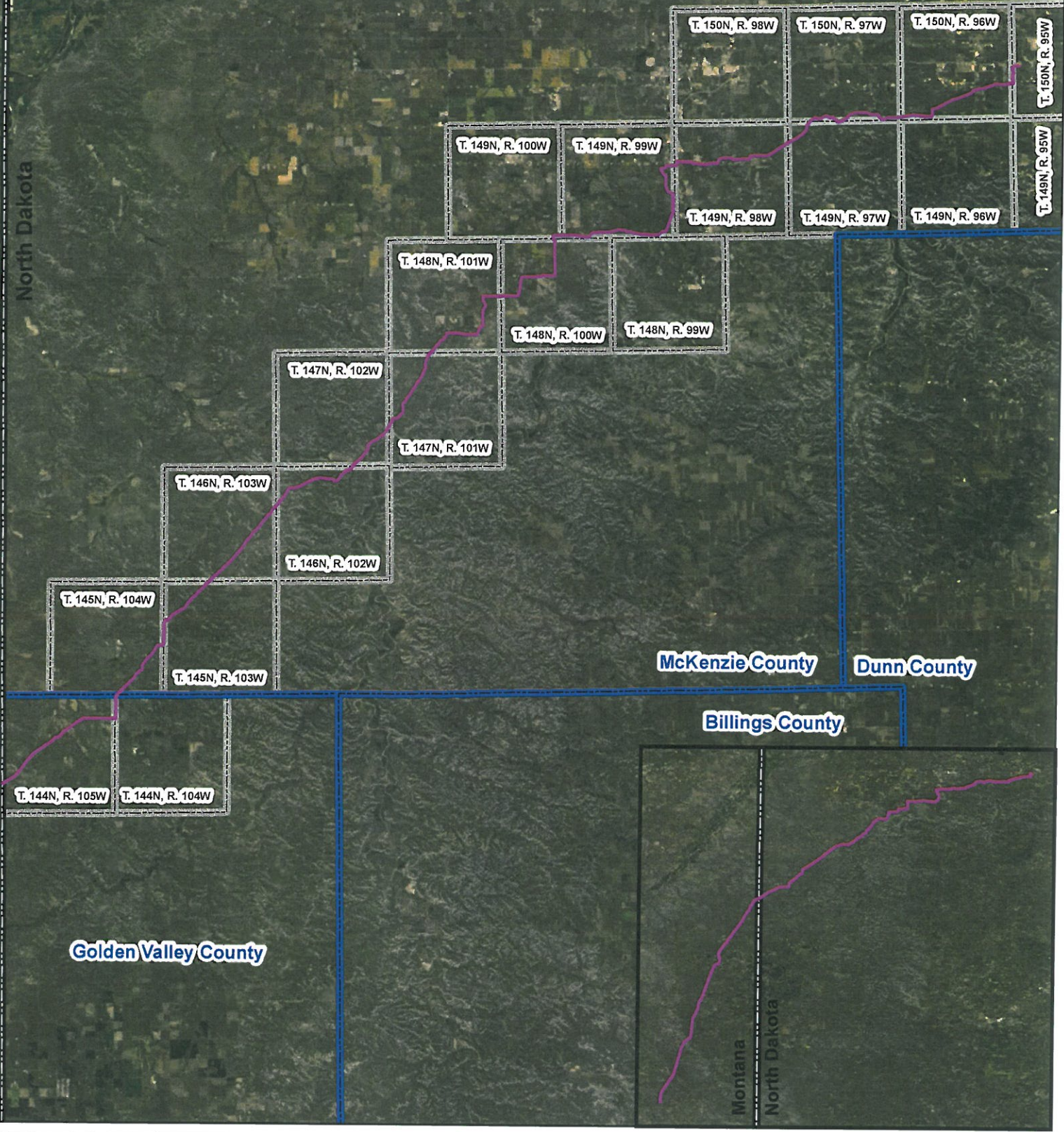
As always, Keitu appreciates the opportunity to assist our client and the regulatory agencies with compliance. I will serve as the primary Keitu contact and can be reached at (701) 667-1800 or via email at [jantognazzi@keitu.com](mailto:jantognazzi@keitu.com).






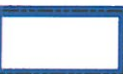
Jaimee Antognazzi  
Operations Manager

*Enclosure: Proposed Pipeline Route*

Montana  
North Dakota



# South Bend Pipeline

-  Proposed Alignment
-  State Border
-  Township/Range Boundary
-  County Border

