

April 13, 2021

Steve Kahl
Executive Director
North Dakota Public Service Commission
600 East Boulevard; Department 408
Bismarck, ND 58505-0480

Re: Basin Electric Power Cooperative - Logan to Tioga 230-kV Transmission Line - 2021
Dead-end Structure Project

Dear Mr. Kahl:

To enhance regional transmission system reliability, Basin Electric Power Cooperative (**Basin Electric**) is planning to replace six (6) existing H-frame structures with dead-end "storm structures." Dead-end structures are used at regular intervals along a transmission line to limit the potential for cascading tower failures that might occur after conductor failure. Construction activities are expected to have minimal impacts and would be completed by fall 2021.

The North Dakota Public Service Commission approved a Certificate of Site Compatibility for Transmission Facility Corridor (Certificate of Corridor No. 17) in 1978 and approved a Route Permit (Permit No. 24) for Basin Electric's Logan to Tioga 230-kV Transmission Line in 1979. The 230-kV transmission line was constructed and is operated pursuant to Chapter 49-22 of the North Dakota Energy Conversion and Transmission Facility Siting Act.

In accordance with North Dakota Century Code 49-22-03 (3)(a)(4), enclosed please find a notarized certification indicating the planned improvement activities for the subject transmission line will not affect any known exclusion or avoidance areas as defined in in North Dakota Administrative Code 69-06-08-02 (1) and (2). Basin Electric will comply with all applicable conditions and protections in siting laws and rules and commission orders previously issued.

In addition to the certification, location maps and the design specifications for the replacement structures are also enclosed. Please contact me at ksolie@bepc.com or 701.202.5096 if you have any questions or require additional information.

Sincerely,

A handwritten signature in blue ink that reads "Kevin L. Solie".

Kevin L. Solie, P.E.
Senior Environmental Compliance Administrator

/kls

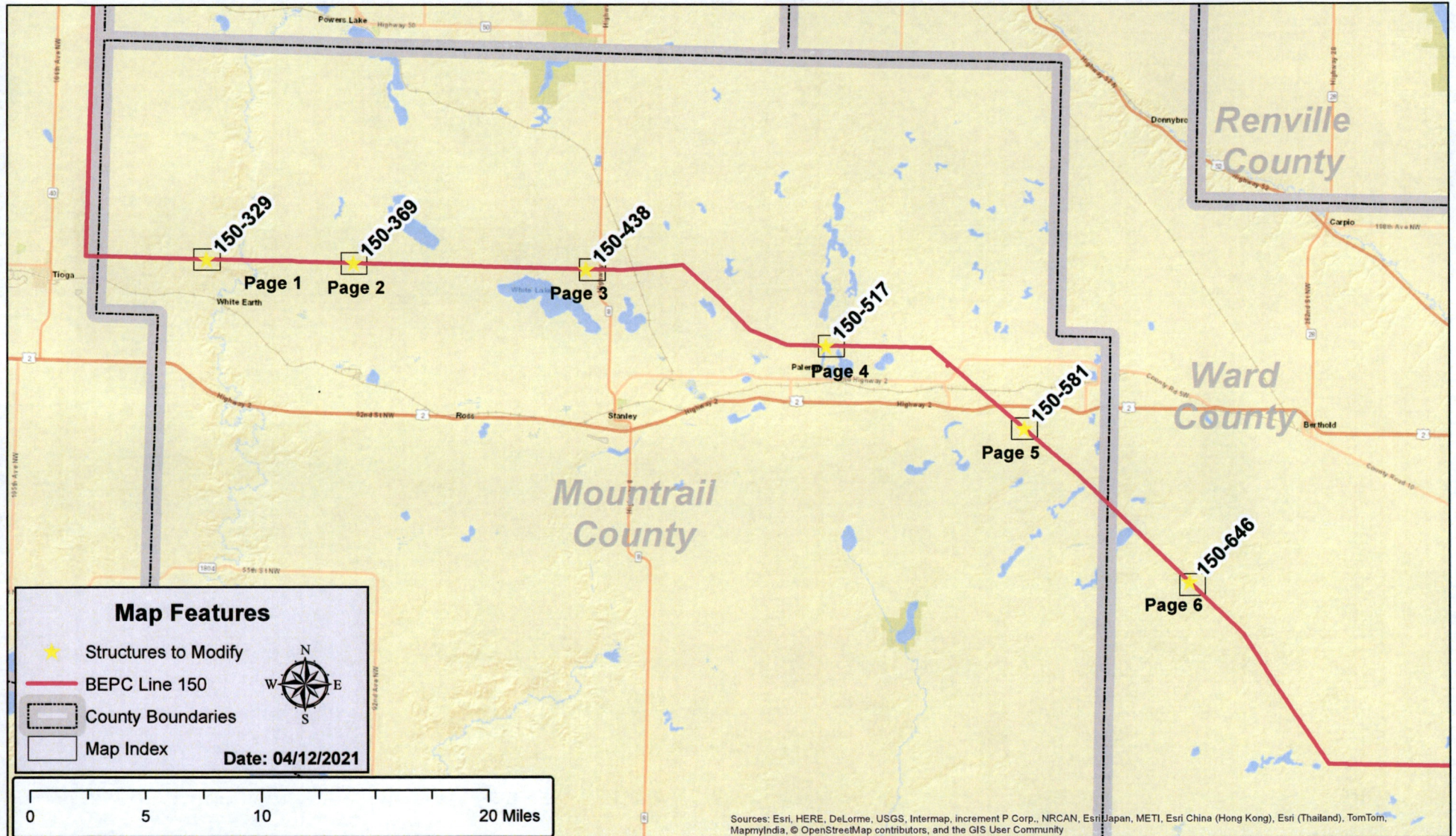
Enclosures

1 **PU-21-139** Filed: 4/14/2021 Pages: 10
Certification and documentation relating to N.D.C.C.
Section 49-22-03(3)(a)(4)

Basin Electric Power Cooperative

Kevin Solie, P.E.

BEPC Line 150 Structure Modifications Overview Map



BEPC Line 150 Structure Modifications

Page 1 of 6
Structure Number 150-329



1 inch = 500 feet Date: 04/12/2021

Map Features

- BEPC Structures to Modify
- BEPC Structures
- Access Trails
- BEPC Line 150
- Surface Ownership
- Right-of-Way Parcels
- National Wetlands Inventory



Disclaimer: Parcel information is gathered from multiple online sources but has not been verified as accurate

North Dakota state agencies and the ND GIS Hub

BEPC Line 150 Structure Modifications

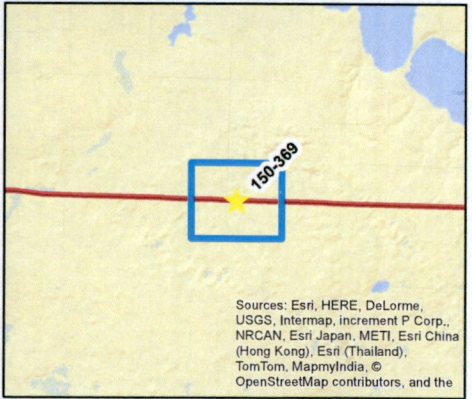
Page 2 of 6
Structure Number 150-369



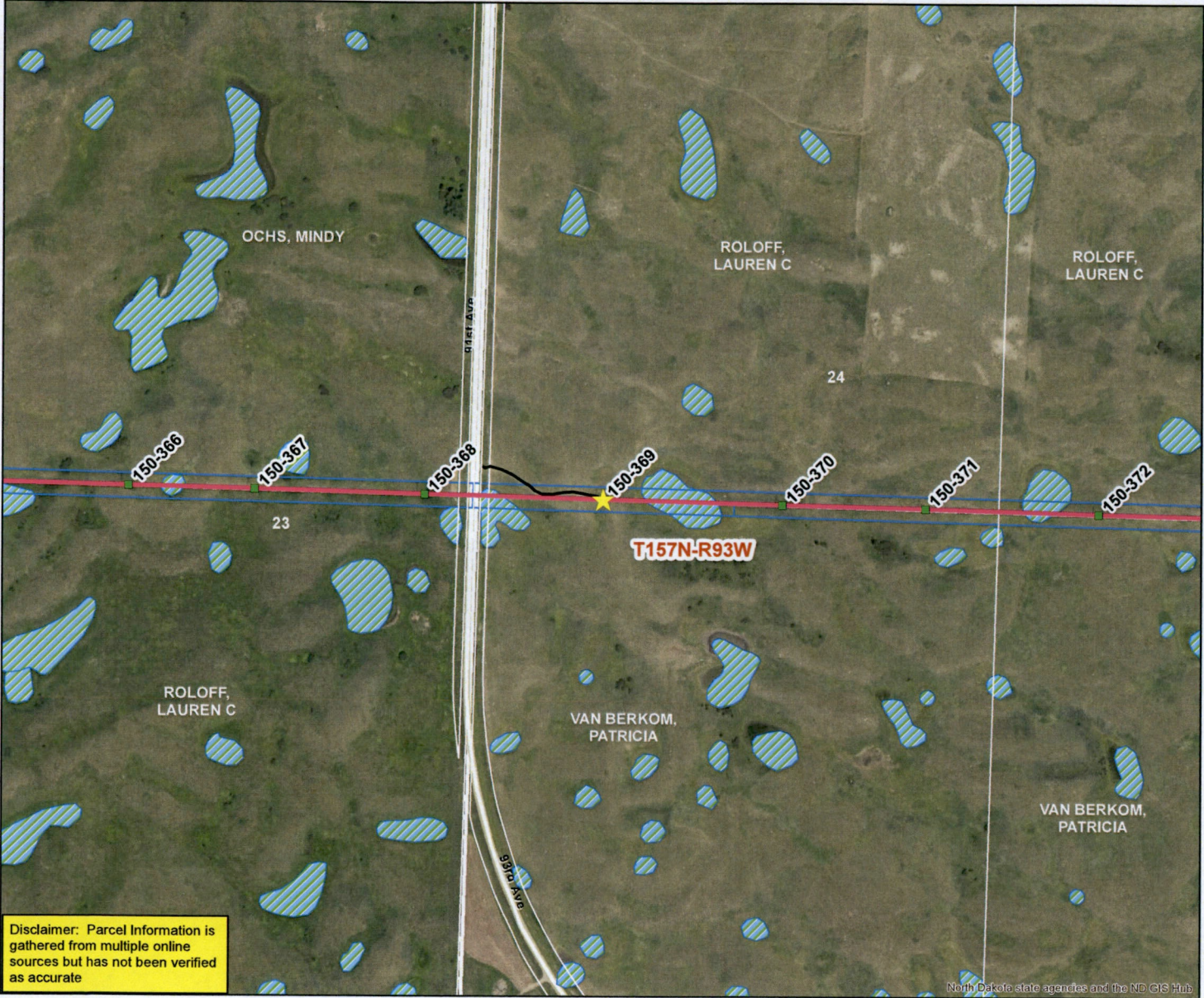
1 inch = 500 feet Date: 04/12/2021

Map Features

- ★ BEPC Structures to Modify
- BEPC Structures
- Access Trails
- BEPC Line 150
- Surface Ownership
- Right-of-Way Parcels
- ▨ National Wetlands Inventory



Sources: Esri, HERE, DeLorme, USGS, Intermap, increment P Corp., NRCAN, Esri Japan, METI, Esri China (Hong Kong), Esri (Thailand), TomTom, MapmyIndia, © OpenStreetMap contributors, and the



Disclaimer: Parcel Information is gathered from multiple online sources but has not been verified as accurate

North Dakota state agencies and the ND GIS Hub

BEPC Line 150 Structure Modifications

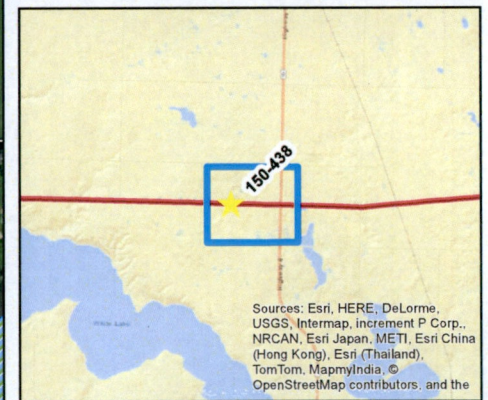
Page 3 of 6
Structure Number 150-438



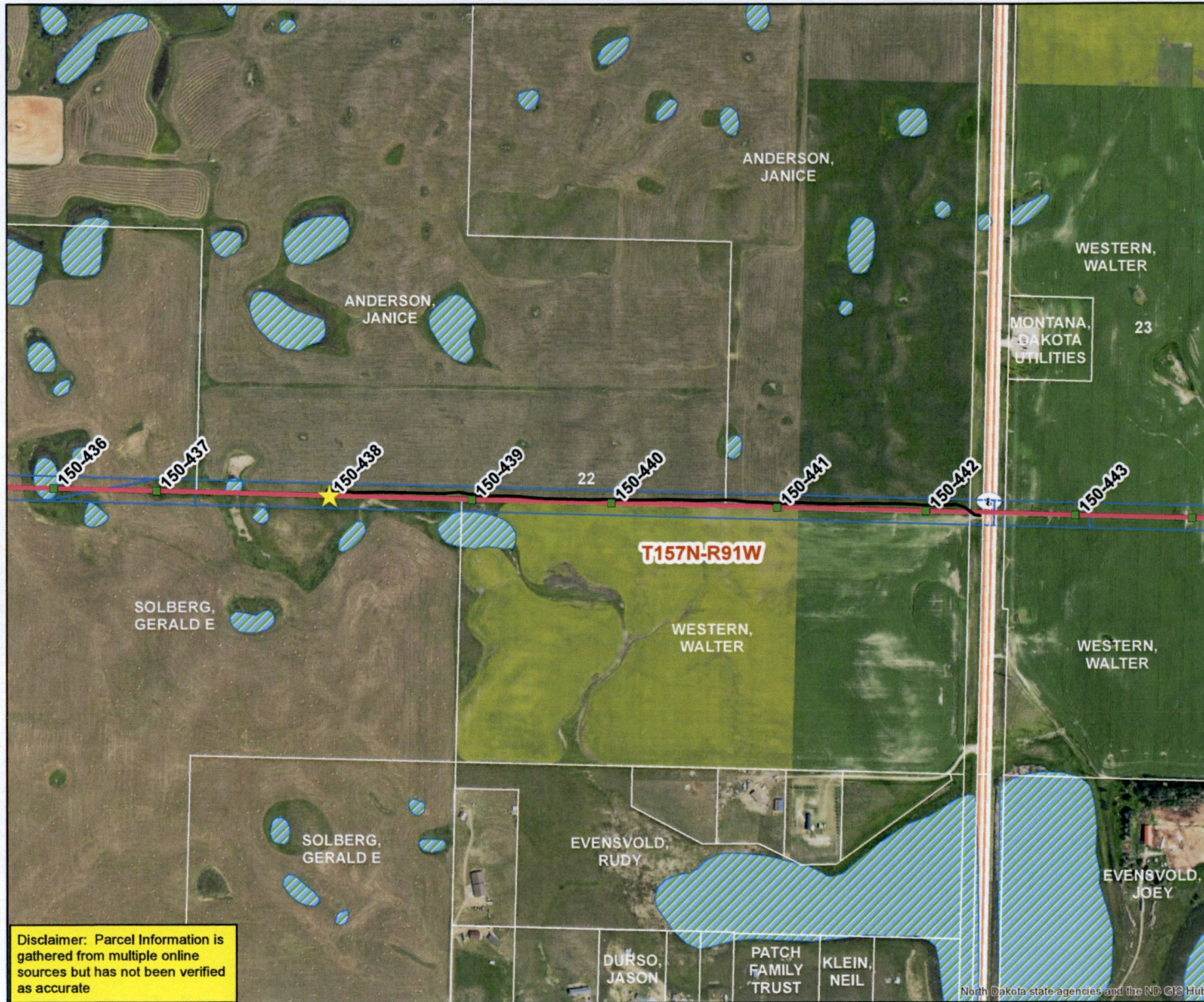
1 inch = 500 feet Date: 04/12/2021

Map Features

- ★ BEPC Structures to Modify
- BEPC Structures
- Access Trails
- BEPC Line 150
- Surface Ownership
- Right-of-Way Parcels
- ▨ National Wetlands Inventory



Sources: Esri, HERE, DeLorme, USGS, Intermap, increment P Corp., NRCAN, Esri Japan, METI, Esri China (Hong Kong), Esri (Thailand), TomTom, MapmyIndia, © OpenStreetMap contributors, and the



Disclaimer: Parcel Information is gathered from multiple online sources but has not been verified as accurate

North Dakota state agencies and the ND ©S Hub

BEPC Line 150 Structure Modifications

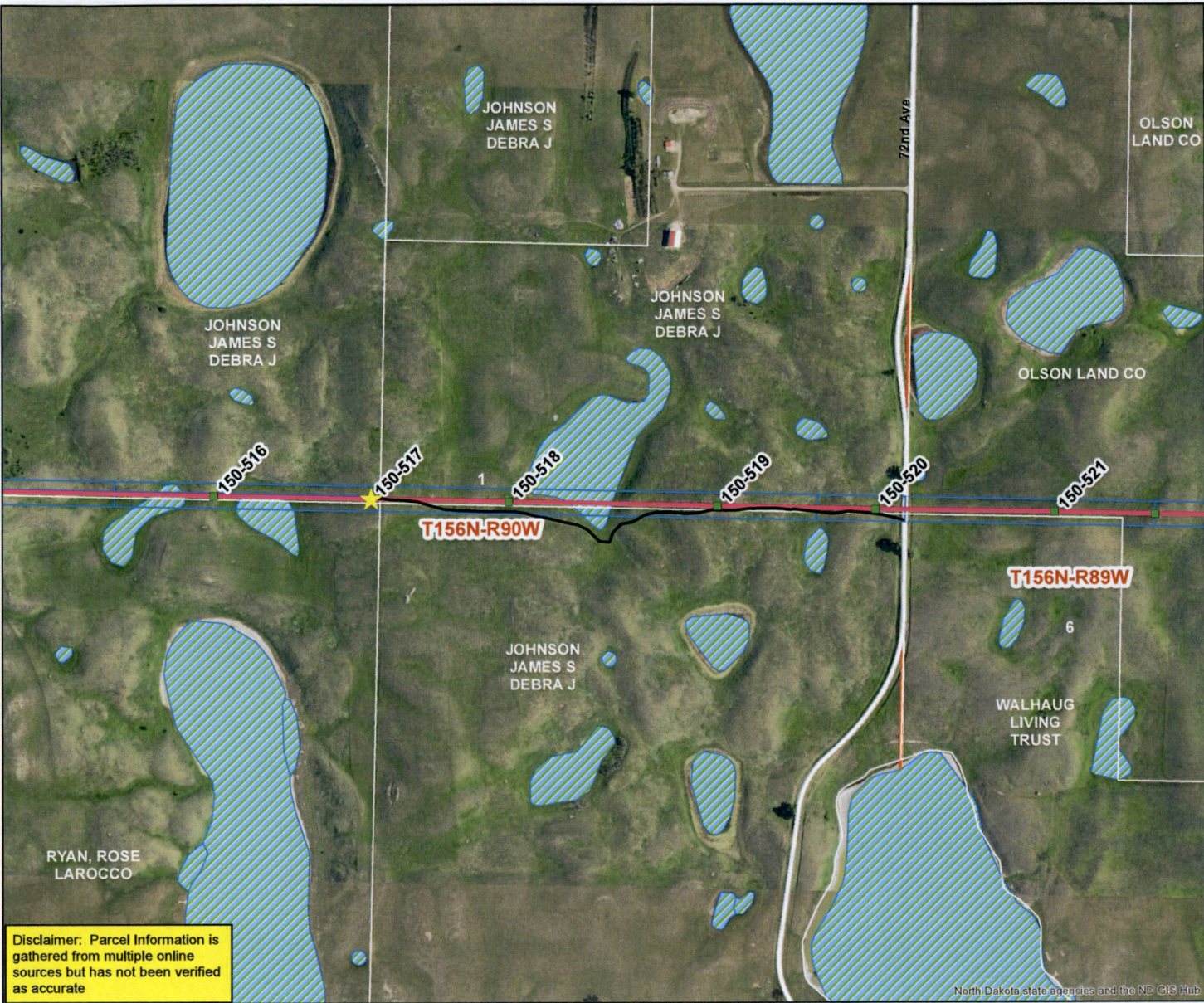
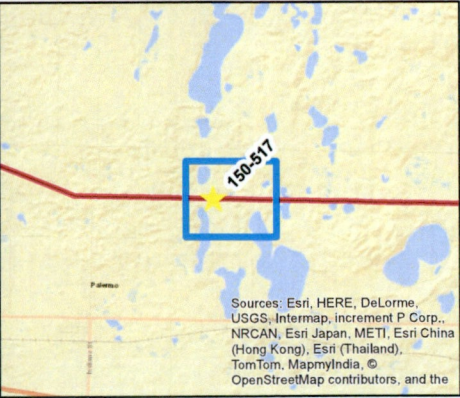
Page 4 of 6
Structure Number 150-517



1 inch = 500 feet Date: 04/12/2021

Map Features

- ★ BEPC Structures to Modify
- BEPC Structures
- Access Trails
- BEPC Line 150
- Surface Ownership
- Right-of-Way Parcels
- ▨ National Wetlands Inventory



Disclaimer: Parcel Information is gathered from multiple online sources but has not been verified as accurate

North Dakota state agencies and the ND GIS Hub

BEPC Line 150 Structure Modifications

Page 5 of 6
Structure Number 150-581



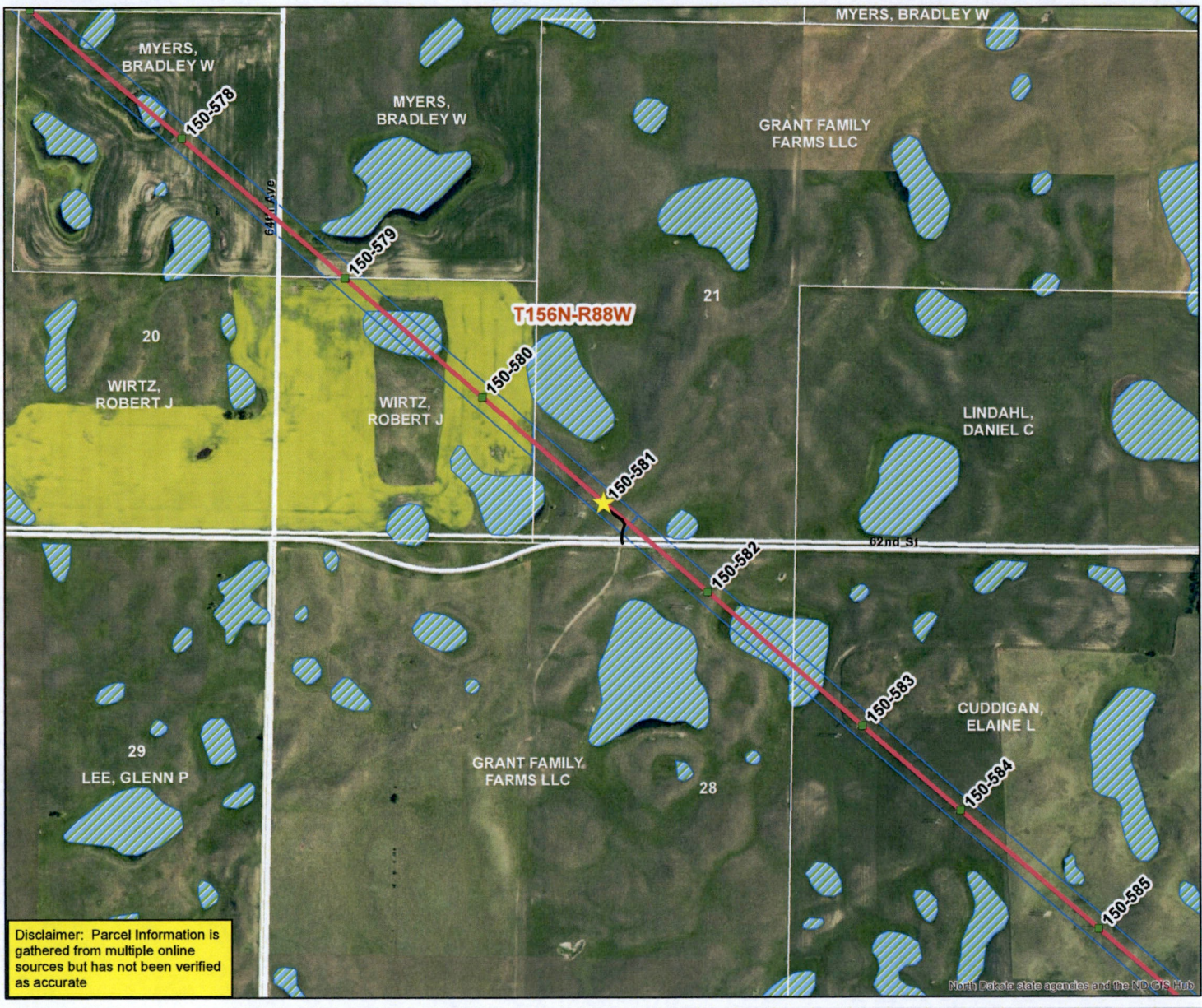
1 inch = 500 feet Date: 04/12/2021

Map Features

- ★ BEPC Structures to Modify
- BEPC Structures
- Access Trails
- BEPC Line 150
- Surface Ownership
- Right-of-Way Parcels
- ▨ National Wetlands Inventory



Sources: Esri, HERE, DeLorme, USGS, Intermap, increment P Corp., NRCAN, Esri Japan, MEN, Esri China (Hong Kong), Esri (Thailand), TomTom, MapmyIndia, © OpenStreetMap contributors, and the



Disclaimer: Parcel information is gathered from multiple online sources but has not been verified as accurate

North Dakota state agencies and the ND GIS Hub

BEPC Line 150 Structure Modifications

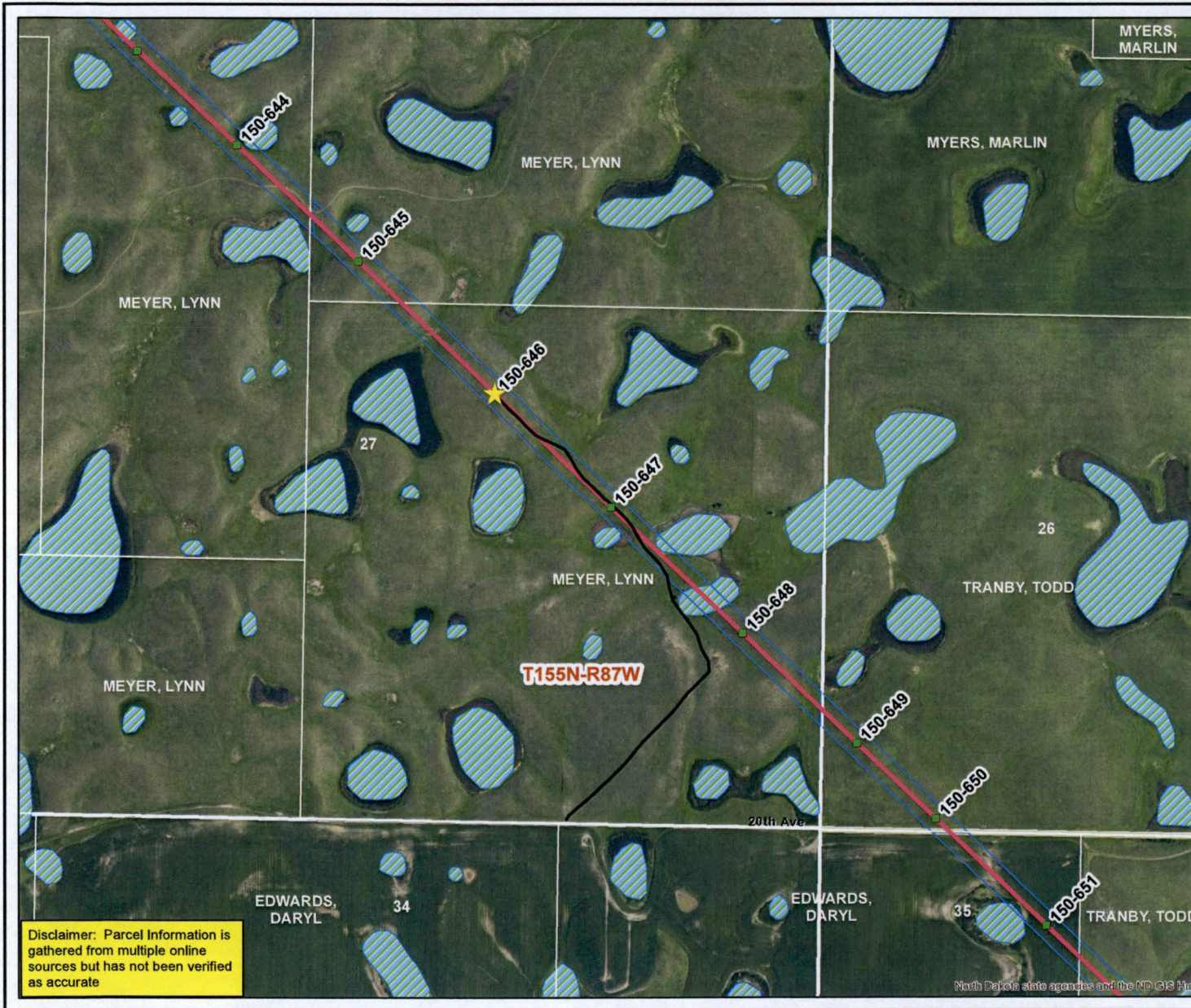
Page 6 of 6
Structure Number 150-646



1 inch = 500 feet Date: 04/12/2021

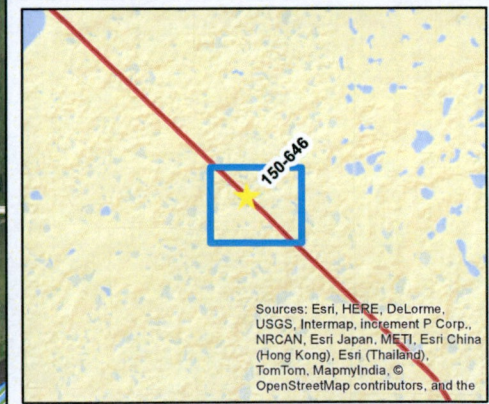
Map Features

- ★ BEPC Structures to Modify
- BEPC Structures
- Access Trails
- BEPC Line 150
- Surface Ownership
- Right-of-Way Parcels
- ▨ National Wetlands Inventory



Disclaimer: Parcel information is gathered from multiple online sources but has not been verified as accurate

North Dakota state agencies and the ND GIS Hub



Sources: Esri, HERE, DeLorme, USGS, Intermap, increment P Corp., NRCAN, Esri Japan, METI, Esri China (Hong Kong), Esri (Thailand), TomTom, MapmyIndia, © OpenStreetMap contributors, and the

