



Public Service Commission

State of North Dakota

COMMISSIONERS

Julie Fedorchak
Randy Christmann
Sheri Haugen-Hoffart

600 East Boulevard, Dept. 408
Bismarck, North Dakota 58505-0480
Web: www.psc.nd.gov
E-mail: ndpsc@nd.gov
Phone: 701-328-2400
ND Toll Free: 1-877-245-6685
Fax: 701-328-2410
TDD: 800-366-6888 or 711

sent via email and regular mail

August 4, 2022

Kathy Duttonhefner
Natural Resources Management Coordinator
ND Parks & Recreation Department
1600 East Century Ave. Suite 3
Bismarck, ND 58503
kgduttonhefner@nd.gov

Dear Ms. Duttonhefner:

The Public Service Commission has been notified of a sinkhole that has been identified as an emergency near Highway 36 in Section 6, T142N R79W in Burleigh County. The bell-shaped sinkhole has a surface opening of about four feet by five feet that increases to about ten feet in diameter deeper in the hole. The hole is approximately 15-20 feet deep. An exposed BEK Communications fiber-optic line and another utility line are visible in the hole. Both appear to be intact and undamaged. This hole is approximately 130 feet north of the center line of North Dakota Highway 36. Seven additional holes have been identified in the area and will be filled concurrently. The contractor for our sinkhole filling project will conduct the project.

As part of the project approval process, our office requests concurrence that the proposed reclamation work will not adversely affect any threatened, endangered or rare plant species. Please reply as soon as possible.

We expect this project to be completed expeditiously in August 2022 at a cost of approximately \$5,000. The attached map provides additional information and shows the eight sinkholes to be addressed.

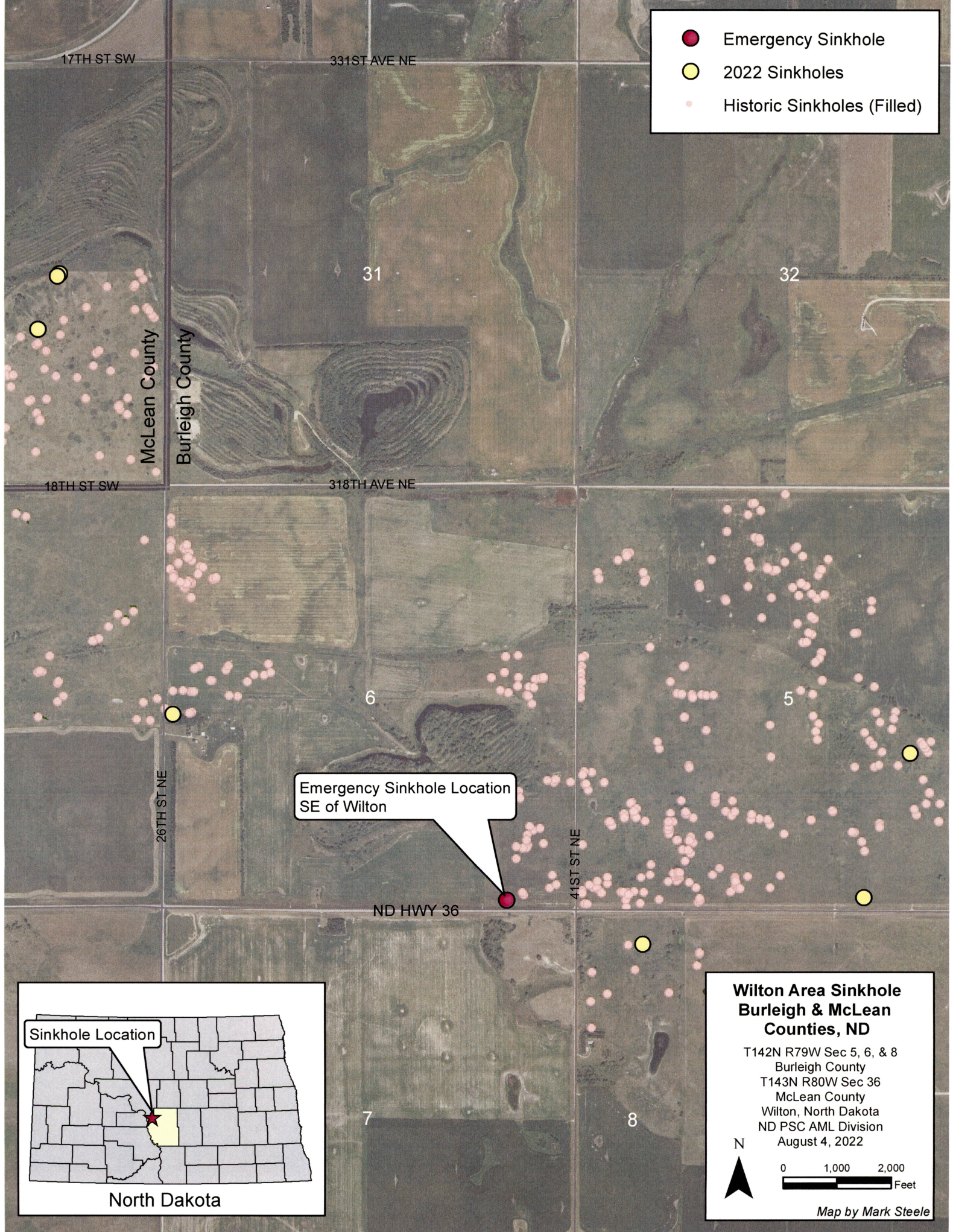
Thank you for your assistance in this matter. If you have any questions or need more information, please contact me at jobreiner@nd.gov or 701.328.2412.

Sincerely,

Joan Breiner, Ph.D.
Assistant Director
Abandoned Mine Lands Division

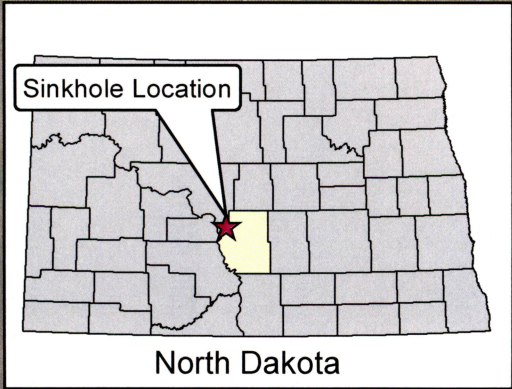
Enclosures

AML\2022\2022_Wilton_Emergency\2022_Advsry_Wilton_Emgcy_auth_to_proceed_ltr_8-4-22



- Emergency Sinkhole
- 2022 Sinkholes
- Historic Sinkholes (Filled)

Emergency Sinkhole Location
SE of Wilton



**Wilton Area Sinkhole
Burleigh & McLean
Counties, ND**

T142N R79W Sec 5, 6, & 8
Burleigh County
T143N R80W Sec 36
McLean County
Wilton, North Dakota
ND PSC AML Division
August 4, 2022

N

0 1,000 2,000
Feet

Map by Mark Steele



Public Service Commission

State of North Dakota

COMMISSIONERS

Julie Fedorchak
Randy Christmann
Sheri Haugen-Hoffart

600 East Boulevard, Dept. 408
Bismarck, North Dakota 58505-0480
Web: www.psc.nd.gov
E-mail: ndpsc@nd.gov
Phone: 701-328-2400
ND Toll Free: 1-877-245-6685
Fax: 701-328-2410
TDD: 800-366-6888 or 711

sent via email and regular mail

August 4, 2022

William Peterson, Ph.D.
State Historic Preservation Officer
State Historical Society of North Dakota
612 East Boulevard Avenue
Bismarck, ND 58505-0830
billpeterson@nd.gov

Dear Dr. Peterson:

The Public Service Commission has been notified of a sinkhole that has been identified as an emergency near Highway 36 in Section 6, T142N R79W in Burleigh County. The bell-shaped sinkhole has a surface opening of about four feet by five feet that increases to about ten feet in diameter deeper in the hole. The hole is approximately 15-20 feet deep. An exposed BEK Communications fiber-optic line and another utility line are visible in the hole. Both appear to be intact and undamaged. This hole is approximately 130 feet north of the center line of North Dakota Highway 36. Seven additional holes have been identified in the area and will be filled concurrently. The contractor for our sinkhole filling project will conduct the project.

As part of the project approval process, our office requests concurrence that our proposed reclamation work will not adversely affect any historical or archaeological resources. Please reply as soon as possible.

We expect this project to be completed expeditiously in August 2022 at a cost of approximately \$5,000. The attached map provides additional information and shows the eight sinkholes to be addressed.

Thank you for your assistance in this matter. If you have any questions or need more information, please contact me at jobreiner@nd.gov or 701.328.2412.

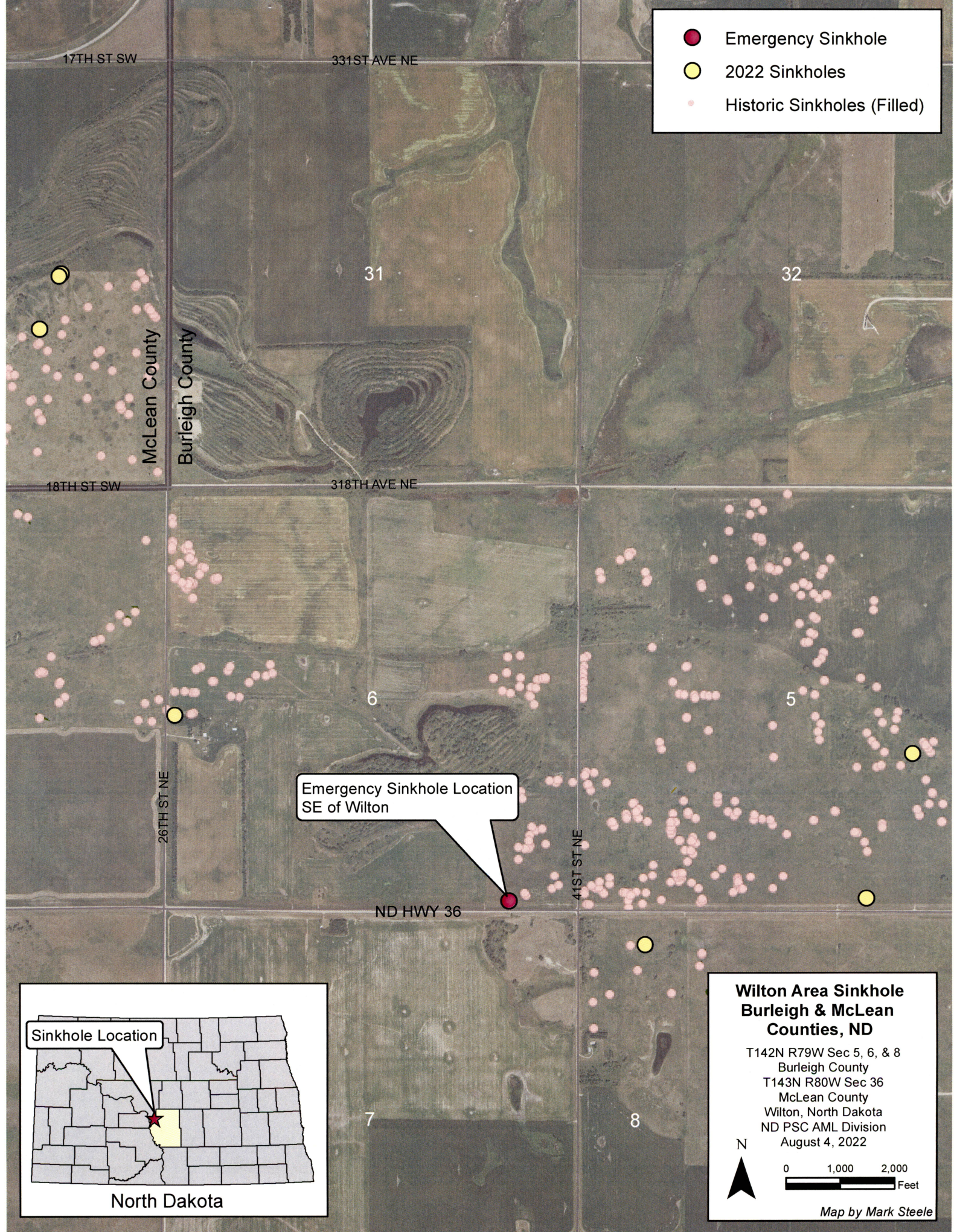
Sincerely,

Joan Breiner, Ph.D.
Assistant Director
Abandoned Mine Lands Division

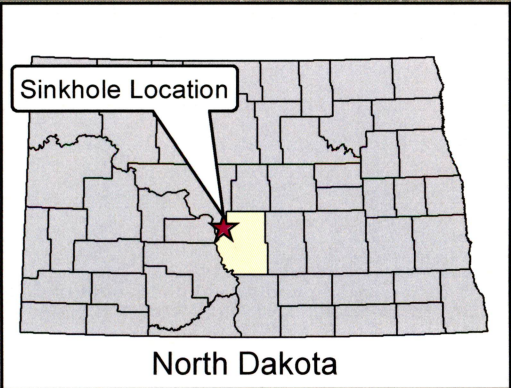
Enclosures

AML\2022\2022_Wilton_Emergency\2022_Advsry_Wilton_Emgcy_auth_to_proceed_ltr_8-4-22

- Emergency Sinkhole
- 2022 Sinkholes
- Historic Sinkholes (Filled)



Emergency Sinkhole Location
SE of Wilton



**Wilton Area Sinkhole
Burleigh & McLean
Counties, ND**

T142N R79W Sec 5, 6, & 8
Burleigh County
T143N R80W Sec 36
McLean County
Wilton, North Dakota
ND PSC AML Division
August 4, 2022

N

0 1,000 2,000
Feet

Map by Mark Steele



Public Service Commission

State of North Dakota

COMMISSIONERS

Julie Fedorchak
Randy Christmann
Sheri Haugen-Hoffart

600 East Boulevard, Dept. 408
Bismarck, North Dakota 58505-0480
Web: www.psc.nd.gov
E-mail: ndpsc@nd.gov
Phone: 701-328-2400
ND Toll Free: 1-877-245-6685
Fax: 701-328-2410
TDD: 800-366-6888 or 711

sent via email and regular mail

August 4, 2022

Jerry D. Reinisch
U.S. Fish and Wildlife Service
3425 Miriam Avenue
Bismarck, ND 58501-7926
jerry_reinisch@fws.gov

Dear Mr. Reinisch:

The Public Service Commission has been notified of a sinkhole that has been identified as an emergency near Highway 36 in Section 6, T142N R79W in Burleigh County. The bell-shaped sinkhole has a surface opening of about four feet by five feet that increases to about ten feet in diameter deeper in the hole. The hole is approximately 15-20 feet deep. An exposed BEK Communications fiber-optic line and another utility line are visible in the hole. Both appear to be intact and undamaged. This hole is approximately 130 feet north of the center line of North Dakota Highway 36. Seven additional holes have been identified in the area and will be filled concurrently. The contractor for our sinkhole filling project will conduct the project.

As part of the project approval process, our office requests concurrence that our proposed reclamation work will not adversely affect any threatened, endangered or rare animal or plant species. Please reply as soon as possible.

We expect this project to be completed expeditiously in August 2022 at a cost of approximately \$5,000. The attached map provides additional information and shows the eight sinkholes to be addressed.

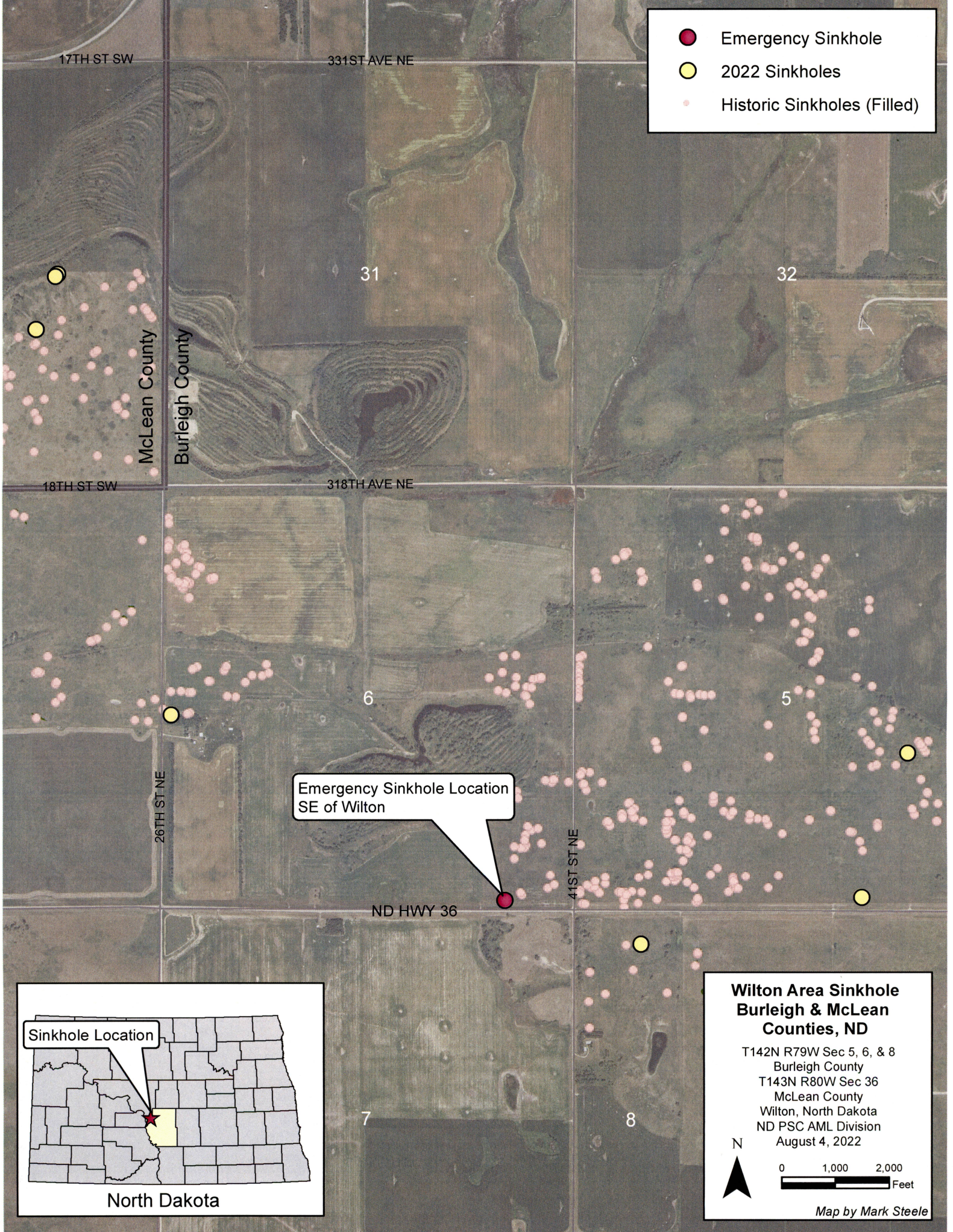
Thank you for your assistance in this matter. If you have any questions or need more information, please contact me at jobreiner@nd.gov or 701.328.2412.

Sincerely,

A handwritten signature in blue ink that reads "Joan Breiner".

Joan Breiner, Ph.D.
Assistant Director
Abandoned Mine Lands Division

Enclosures



- Emergency Sinkhole
- 2022 Sinkholes
- Historic Sinkholes (Filled)

Emergency Sinkhole Location
SE of Wilton



**Wilton Area Sinkhole
Burleigh & McLean
Counties, ND**

T142N R79W Sec 5, 6, & 8
Burleigh County
T143N R80W Sec 36
McLean County
Wilton, North Dakota
ND PSC AML Division
August 4, 2022

N

0 1,000 2,000
Feet

Map by Mark Steele



Public Service Commission

State of North Dakota

COMMISSIONERS

Julie Fedorchak
Randy Christmann
Sheri Haugen-Hoffart

600 East Boulevard, Dept. 408
Bismarck, North Dakota 58505-0480
Web: www.psc.nd.gov
E-mail: ndpsc@nd.gov
Phone: 701-328-2400
ND Toll Free: 1-877-245-6685
Fax: 701-328-2410
TDD: 800-366-6888 or 711

sent via email and regular mail

August 4, 2022

Mr. Karl Rockeman, P.E.,
Director, Division of Water Quality
North Dakota Department of Environmental Quality
918 East Divide Avenue
Bismarck, ND 58501-1947
krockema@nd.gov

Dear Mr. Rockeman:

The Public Service Commission has been notified of a sinkhole that has been identified as an emergency near Highway 36 in Section 6, T142N R79W in Burleigh County. The bell-shaped sinkhole has a surface opening of about four feet by five feet that increases to about ten feet in diameter deeper in the hole. The hole is approximately 15-20 feet deep. An exposed BEK Communications fiber-optic line and another utility line are visible in the hole. Both appear to be intact and undamaged. This hole is approximately 130 feet north of the center line of North Dakota Highway 36. Seven additional holes have been identified in the area and will be filled concurrently. The contractor for our sinkhole filling project will conduct the project.

As part of the project approval process, our office requests concurrence that our proposed reclamation work will not adversely affect any surface or groundwater resources. Please reply as soon as possible.

We expect this project to be completed expeditiously in August 2022 at a cost of approximately \$5,000. The attached map provides additional information and shows the eight sinkholes to be addressed.

Thank you for your assistance in this matter. If you have any questions or need more information, please contact me at jobreiner@nd.gov or 701.328.2412.

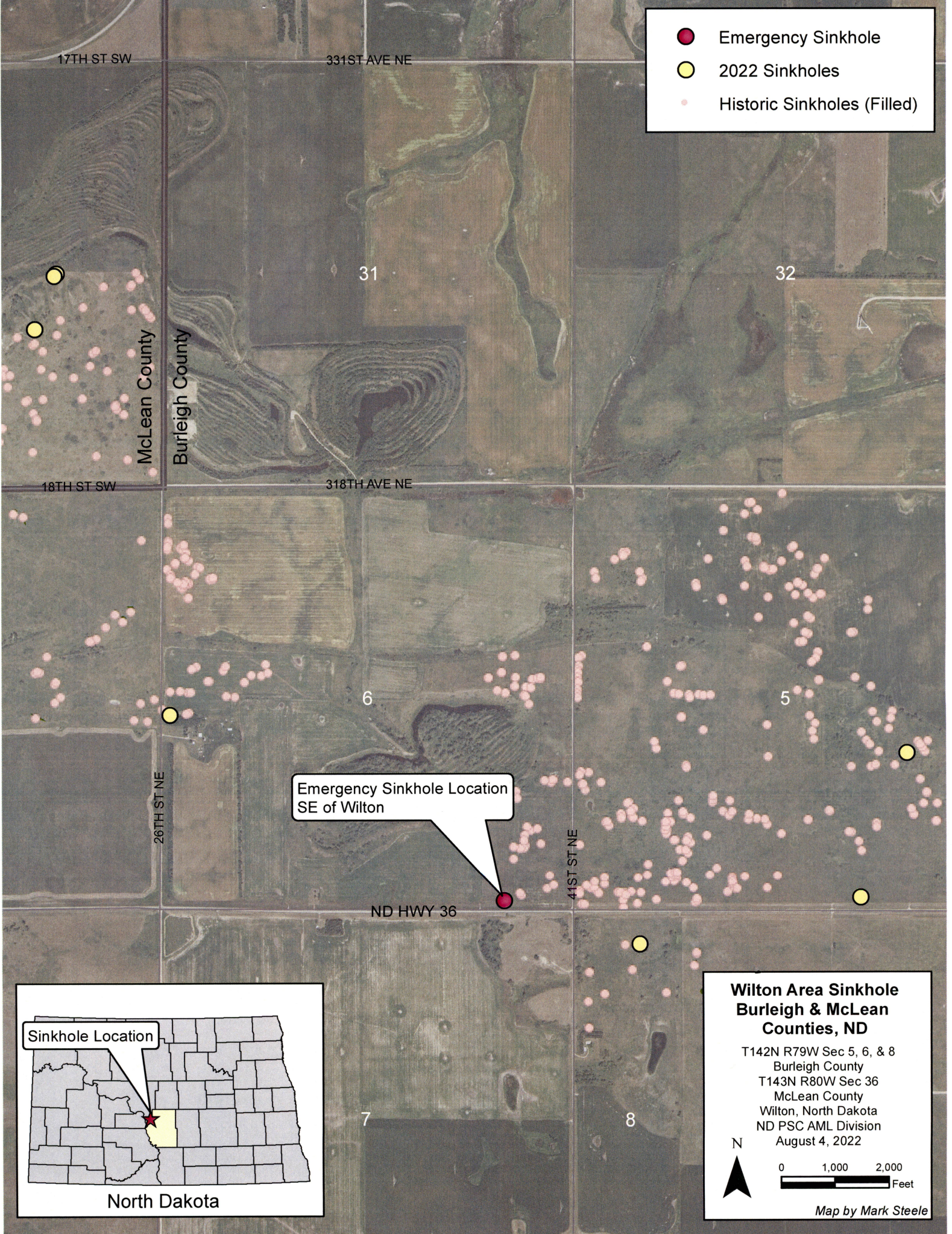
Sincerely,

Joan Breiner, Ph.D.
Assistant Director
Abandoned Mine Lands Division

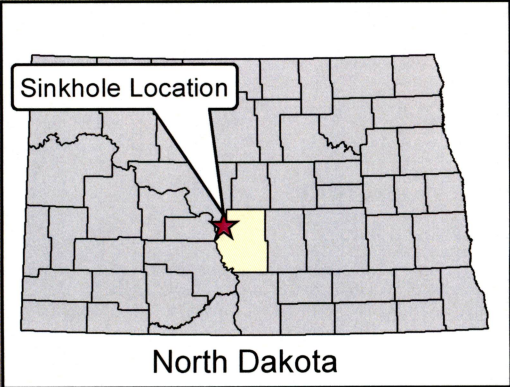
Enclosures

AML\2022\2022_Wilton_Emergency\2022_Advsry_Wilton_Emgey_auth_to_proceed_ltr_8-4-22

- Emergency Sinkhole
- 2022 Sinkholes
- Historic Sinkholes (Filled)



Emergency Sinkhole Location
SE of Wilton



**Wilton Area Sinkhole
Burleigh & McLean
Counties, ND**

T142N R79W Sec 5, 6, & 8
Burleigh County
T143N R80W Sec 36
McLean County
Wilton, North Dakota
ND PSC AML Division
August 4, 2022

N

0 1,000 2,000
Feet

Map by Mark Steele