

April 12, 2022

Steve Kahl
Executive Director
North Dakota Public Service Commission
600 East Boulevard; Department 408
Bismarck, ND 58505-0480

RE: Dakota Gasification Company
Dakota Carbon Pipeline - Mercer County
Case No. PU-21-150

Dear Mr. Kahl:

In accordance with North Dakota Century Code 49-22.1-15(1) and item 37 of the Certification Relating to Order Provisions in the above-referenced case, enclosed please find a notarized certification indicating Dakota Gasification Company's (**DGC's**) route adjustment within the designated corridor will not affect any known exclusion or avoidance areas as defined in in North Dakota Administrative Code 69-06-08-02 (1) and (2).

As depicted on the attached figure, DGC intends to make minor adjustments to the pipeline route within the permitted 200-foot-wide corridor. These minor adjustments are a result of the out-of-corridor adjustments (acknowledged in the North Dakota Public Service Commission's April 11, 2022 letter) and are generally proposed to enhance the constructability of the pipeline.

Certificate of Corridor Compatibility Number 223 and Route Permit Number 233 were issued by the North Dakota Public Service Commission for the Dakota Carbon Pipeline on July 28, 2021. DGC will comply with all applicable conditions and protections in siting laws and rules and commission orders previously issued.

I will serve as the key contact person for the purposes of notice and communications during the adjustment application. If you have any questions or require additional information, please contact me at 701.557.5495.

Sincerely,

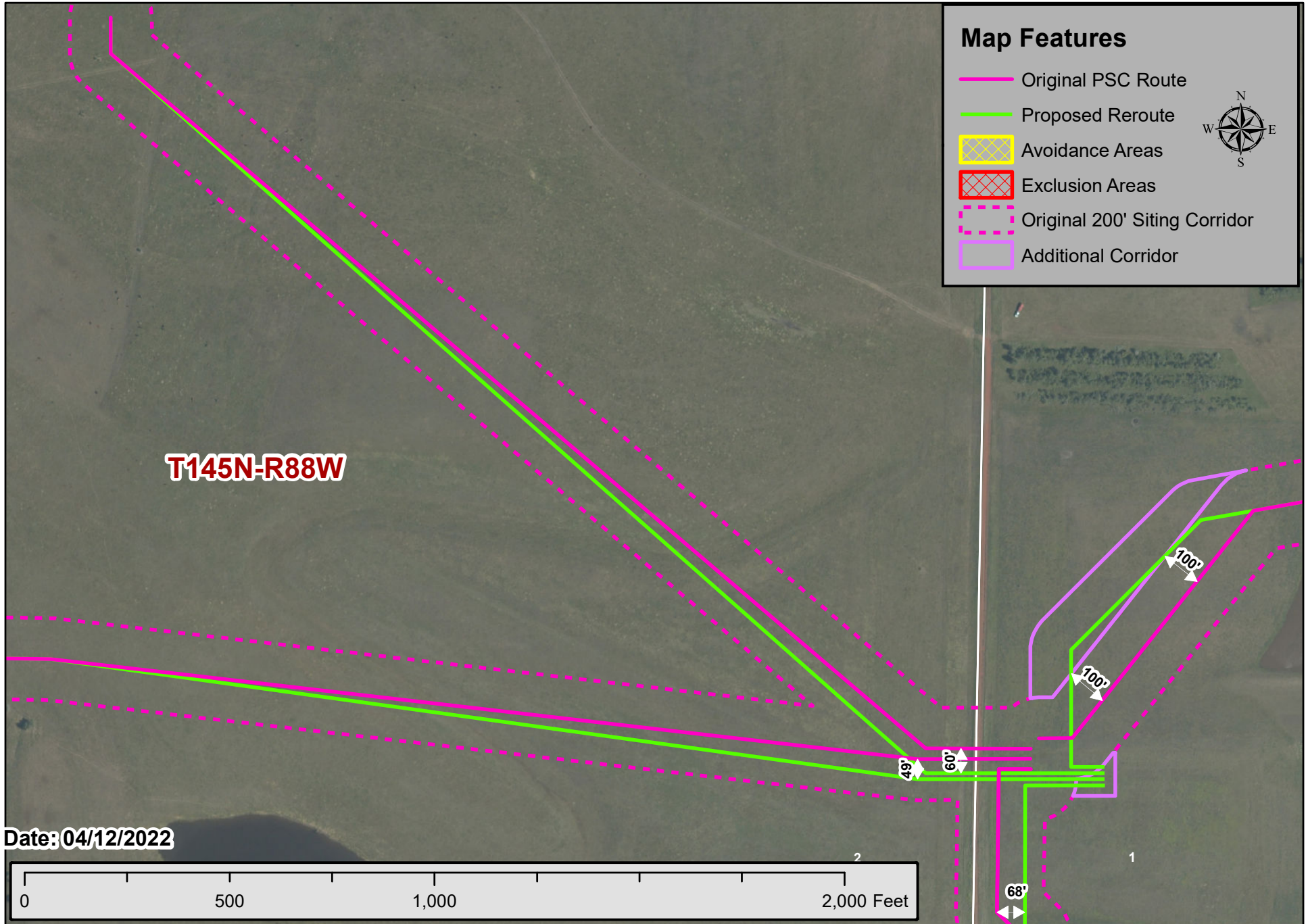
A handwritten signature in blue ink, appearing to read "K. Solie", is written over a light blue horizontal line.

Kevin L. Solie, P.E.
Senior Environmental Compliance Administrator

/sw

Enclosures 72 PU-21-150 Filed 04/12/2022 Pages: 3
Certification and documentation for route adjustment under section N.D.C.C. 49-22.1-15(1)
Dakota Gasification Company
Kevin Solie, P.E.

Route Adjustments



Map Features

- Original PSC Route
- Proposed Reroute
- Avoidance Areas
- Exclusion Areas
- Original 200' Siting Corridor
- Additional Corridor

