

June 1, 2022

Steve Kahl
Executive Director
North Dakota Public Service Commission
600 East Boulevard; Department 408
Bismarck, ND 58505-0480

RE: Dakota Gasification Company
Dakota Carbon Pipeline - Mercer County
Case No. PU-21-150 Tree/Shrub Replacement Plan

Dear Mr. Kahl:

Basin Electric Power Cooperative (**Basin Electric**) contracted with Western EcoSystems Technologies (**WEST**) to inventory trees and shrubs that may be potentially cleared, grubbed, cut or otherwise removed during construction of the Dakota Carbon Pipeline (**Project**) so that mitigation could occur according to the North Dakota Public Service Commission's (**NDPSC's**) Tree and Shrub Mitigation Specifications for Case No. PU-21-150.

Trees and Shrubs Removed

Approximately 71 trees and 134 shrubs (205 total) were estimated to be removed during construction of the Project. The enclosed letter report and map prepared by WEST provides details on species and locations of the trees and shrubs affected by construction. All trees and shrubs are on land owned by Coteau Properties. Coteau Properties waived the option for tree and shrub replacements.

Replacement Plan

The Tree and Shrub Mitigation Specifications in Case No. PU-21-150 states that both trees and shrubs shall be replaced on a minimum two-to-one basis; therefore, approximately 410 replacements are needed for the Project.

Basin Electric contacted the Mercer County Soil Conservation District (**SCD**) to supply the trees and shrubs and to complete the planting. The replacements will be planted in the SW1/4 of Section 24, Township 145N Range 88W, on the Antelope Valley Station (**AVS**) plant site. The enclosed Tree and Shrub Planting Worksheet, prepared by Mercer County SCD, indicates the numbers, types, and locations of the trees and shrubs proposed as replacements.

Tree and shrub planting is proposed to occur during June 2022. The 2022 planting season has been delayed by spring blizzards and extremely wet conditions. A total of 419 trees and shrubs are planned as replacements, which is 102% of the total required. Two years after completion of the planting, Basin Electric will file a summary documenting benefits of the tree and shrub mitigation to landowners, the community, wildlife, and the environment. The summary will also report the number of surviving replacement trees and shrubs.

75 PU-21-150 Filed 06/01/2022 Pages: 5
Tree and Shrub Replacement Plan
Basin Electric Power Cooperative
Kevin Solie, P.E.

June 1, 2022
Page 2

Basin Electric requests NDPSC approval for the Tree/Shrub Replacement Plan for the above-referenced case. Please contact me if you have any questions, comments or concerns regarding this submittal.

Sincerely,



Kevin L. Solie, P.E.
Senior Environmental Compliance Administrator

/kls
Enclosures



ENVIRONMENTAL & STATISTICAL CONSULTANTS

4007 State Street, Suite 109, Bismarck, ND 58503
Phone: 701-250-1756 ♦ www.west-inc.com ♦ Fax: 701-250-1761

November 2, 2021

Kevin Solie
Basin Electric Power Cooperative
1717 East Interstate Ave
Bismarck, North Dakota 58503

RE: Tree-Shrub Inventory for DGC Great Plains Synfuels CO2 Pipeline

Dear Mr. Solie,

Western EcoSystems Technology, Inc. conducted the pre-construction tree and shrub inventory for the DGC Great Plains Synfuels Plant CO2 geologic sequestration pipeline in central Mercer County, North Dakota (Project). The tree and shrub inventory was conducted in accordance to the Public Service Commission permit requirements to inventory trees and shrubs prior to construction to allow for mitigation efforts. Surveys were conducted by a biologist familiar with the tree-shrub inventory methods in North Dakota.

Woody shrubs and trees in the construction right-of-way, defined as 25 feet either side of the pipeline, were inventoried ahead of construction following a direct count (Figure 1). A total of 134 shrubs and 71 trees were inventoried within the construction right-of-way (Table 1). All trees and shrubs were located on properties owned by the Coteau Properties Company.

Table 1. Number and species of shrubs within construction Right-of-way for the DGC Great Plains Synfuels CO2 Pipeline.

Species	Number of Trees/Shrubs
Shrubs	
chokecherry	29
American plum	4
buffaloberry	101
Subtotal	134
Trees	
Russian olive	71
Total	205

Please let me know if you need any further information regarding this effort.

Sincerely,

Clayton Derby
Senior Manager

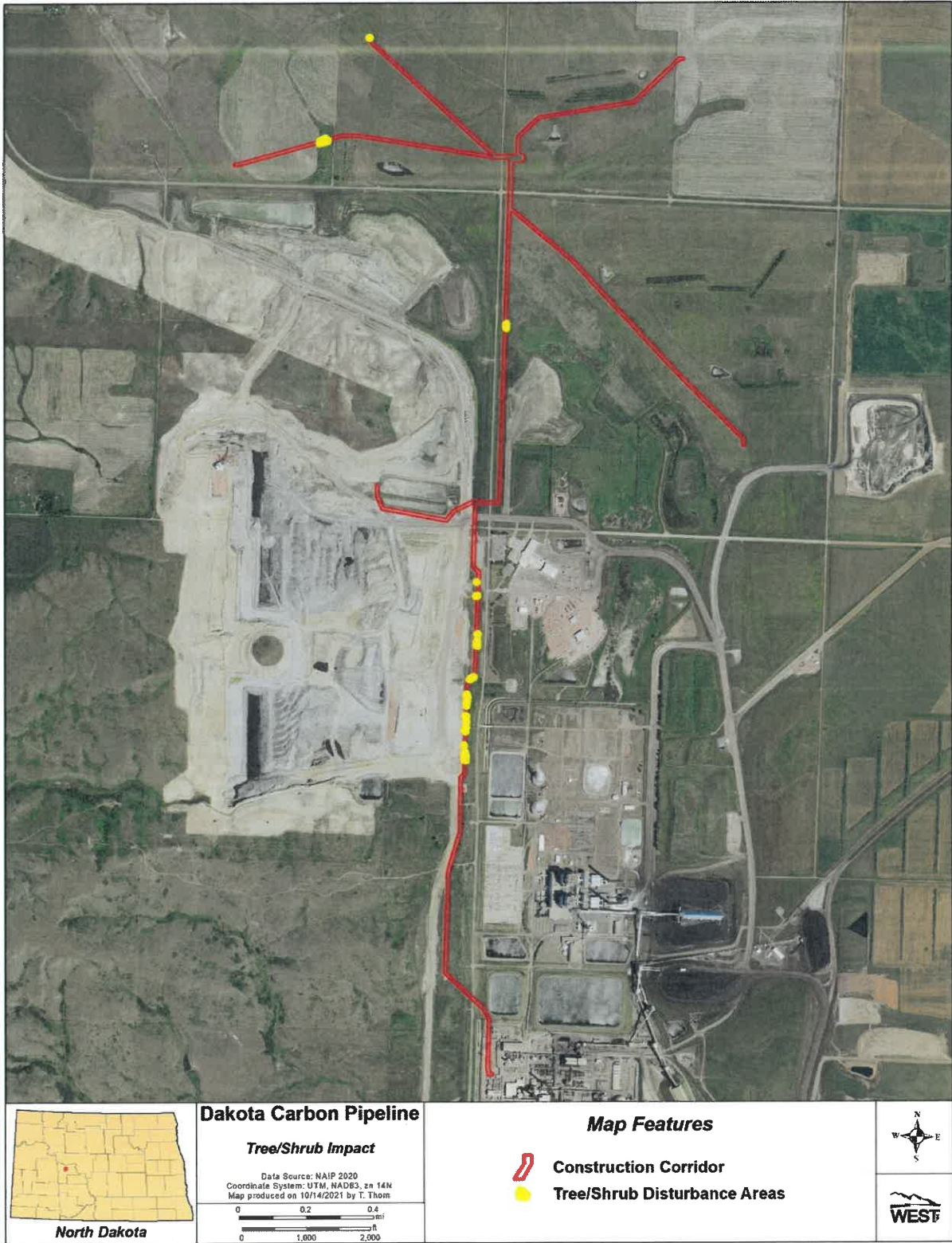


Figure 1. Map of DGC Great Plains Synfuels CO2 Pipeline and shrubs to be cleared within construction right-of-way.

