

Memorandum

To: Commissioners Julie Fedorchak and Randy Christmann

From: Adam Renfandt

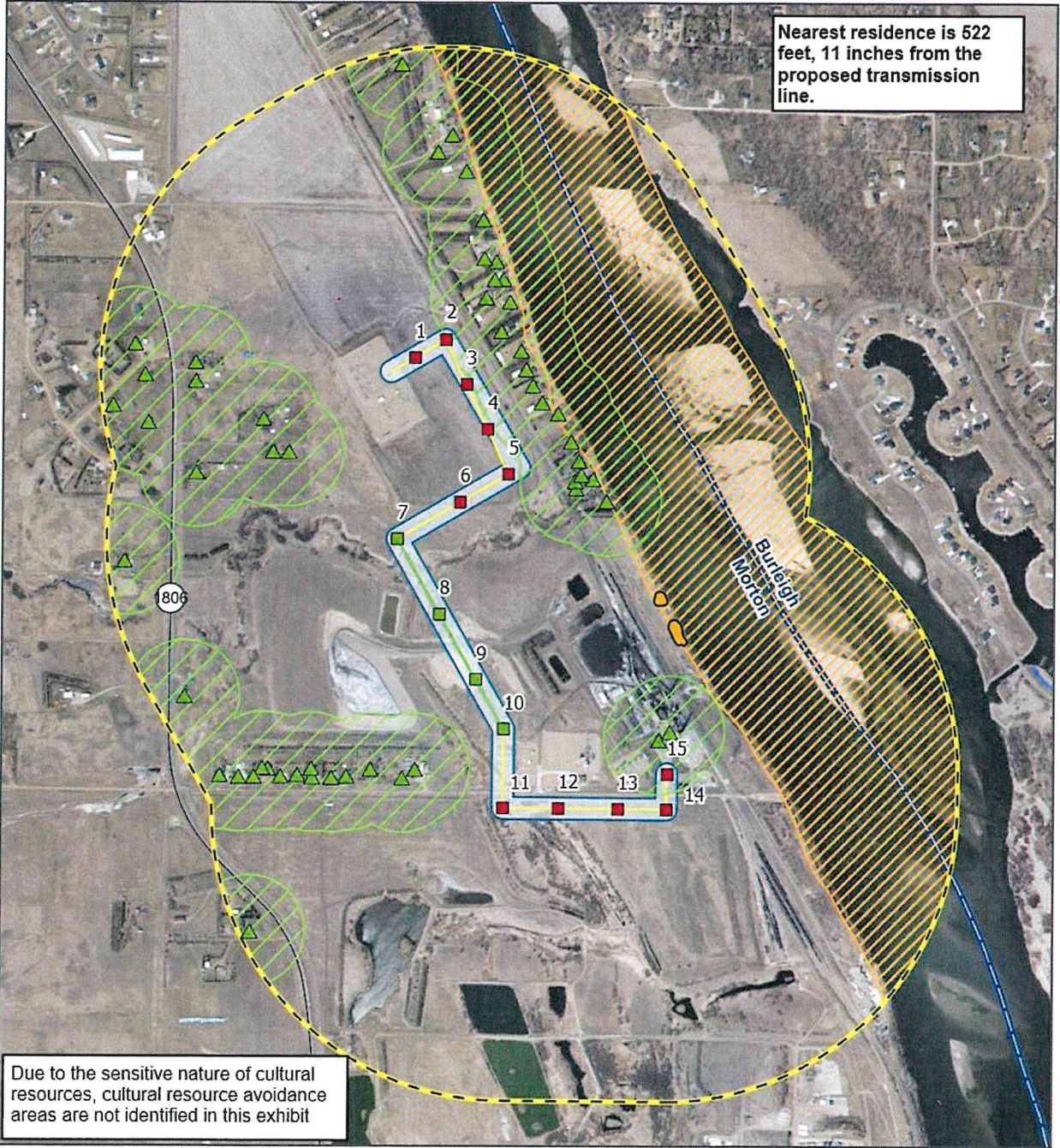
Date: January 25, 2022

Re: Montana-Dakota Utilities Co. (MDU), 230 kV Transmission Line - Morton County, Siting Application, Case No. PU-21-151

On January 18, 2022, MDU filed a request to remove frozen topsoil to place pole structures 11 through 15 as identified on the attached map. Pursuant to provision 11 to the Certification Relating to Order Provisions – Transmission Facility Siting attached to the December 29, 2021 Findings of Fact, Conclusions of Law and Order, such a request must be approved by the Commission.

MDU's request indicated that they intend to remove the frozen topsoil using an auger to carefully break up the soil in a diameter not to exceed 48 inches, and that they will then accumulate and separately store the topsoil from the subsoil.

Since MDU intends to use an auger to carefully break up the frozen soil to determine the appropriate depth of topsoil, I believe topsoil will be properly segregated from subsoil during the excavation and subsequent replacement of topsoil, Staff recommends approval of MDU's request.



Nearest residence is 522 feet, 11 inches from the proposed transmission line.

Due to the sensitive nature of cultural resources, cultural resource avoidance areas are not identified in this exhibit

MONTANA-DAKOTA UTILITIES
Mandan Route
Avoidance/Exclusion



- Proposed Pole
- Existing Pole
- ▲ Occupied Residence
- Existing Transmission Line
- Proposed Transmission Line
- State Highway
- Cultural/Natural Resources Inventory Area/ 200-foot Corridor
- 1-Mile Study Area
- County Boundary
- Avoidance Area
- Historic Landslide
- Structure Avoidance (500ft)
- Exclusion Area
- Critical Habitat

Morton County, ND

NAD 1983 UTM Zone 14N
 100°53'21"W 46°52'13"N

Base Map: ESRI ArcGIS Online, accessed December 2021

Updated: 12/2/2021
 Project No. 62898

