



October 26, 2021

Jeff Shaffer, Director
McKenzie County Water Resources Board
1300 12th Street Southeast, Suite 128
Watford City, ND 58854

RE: Caliber Midstream Partners, L.P.
Caliber Pipeline Project
Project Notification Letter and Review Request

Mr. Shaffer,

Caliber Midstream Partners, L.P. (Caliber) owns and operates a 2.62-mile long, 8-inch diameter pipeline (Caliber Pipeline) that connects its mechanical refrigeration natural gas processing plant (Hay Butte Plant) to Northern Border Pipeline (150T 101R 36S). The Caliber Pipeline currently delivers between 2 and 8 million cubic feet per day (“mcf/d”) of treated natural gas to Northern Border. Natural gas flows on the Caliber Pipeline are intermittent. There is an existing compressed natural gas (“CNG”) truck fueling facility adjacent to Caliber’s processing plant. Gas also flows from the processing plant directly to the truck fueling facility.

Caliber constructed the pipeline in August of 2014 and does not currently have an issued PSC certificate or permit. Caliber is requesting an approval for a temporary operation or variance under Chapter 49-22.1-23 to continue beneficial operation of our pipeline system. Caliber is also requesting in the application process to modify certain valves and structures at interconnection with Northern Border Pipeline located in McKenzie County, North Dakota permitting bi-directional flows on an intermittent and seasonal basis to support operations in the Bakken region. Caliber anticipates placing the facilities in-service by November 1, 2021.

Caliber proposes to modify facilities at its existing interconnection with Northern Border to allow gas to flow bi-directionally. Caliber proposes to transport gas from Northern Border to the adjacent trucking facility. The gas from the pipeline would be loaded into trucks, and from there the CNG would be delivered to production facilities for use as fuel in hydraulic fracturing operations and would be consumed wholly within North Dakota. Gas flows from Northern Border would be seasonal and intermittent with minimal volumes, anywhere between 0.1 and 5 mcf/d. Caliber anticipates these volumes will be delivered by actual flows of gas, and by displacement. Caliber does not own the CNG trucking facility and would not take title to any gas flowed from Northern Border.

Reconfiguration of Caliber’s facilities to support bi-directional gas flows from Northern Border to the CNG trucking facility will require only minor construction activities, all of which will take place on land owned by Caliber, thus there will be no impact on any landowners. Caliber will not be taking customers from any other pipeline or replace pipeline capacity that customers are currently using on another pipeline. Caliber’s construction activities do not require construction of a new pipeline, nor would construction require the use



of eminent domain, as the construction would be conducted entirely on land owned by Caliber. Caliber estimates construction including less than 100' of pipe, less than 3 valves, one pressure regulator to connect the new buyback meter installed by Northern Border to the Caliber pipeline. All work will be above ground on land already owned by Caliber. Northern Border operates the interconnect, Caliber owns some of the equipment there. Northern Border will need to install a tee, valving, and meter to allow the buyback. Caliber will install a regulator, tee and valving to connect the buyback.

The purpose of this letter is to provide notification of the Project and advise you that your agency has the opportunity to participate in the regulatory process should you choose to comment on the Project.

WSP USA, Inc. (WSP) has been retained by Caliber to provide environmental consulting support for this Project. Should you have any questions or require additional information, please contact me at (303) 746-6656 or Bonnie.Gibson@wsp.com. In closing, upon your review of this Project, should you choose to comment, a timely response is respectfully requested.

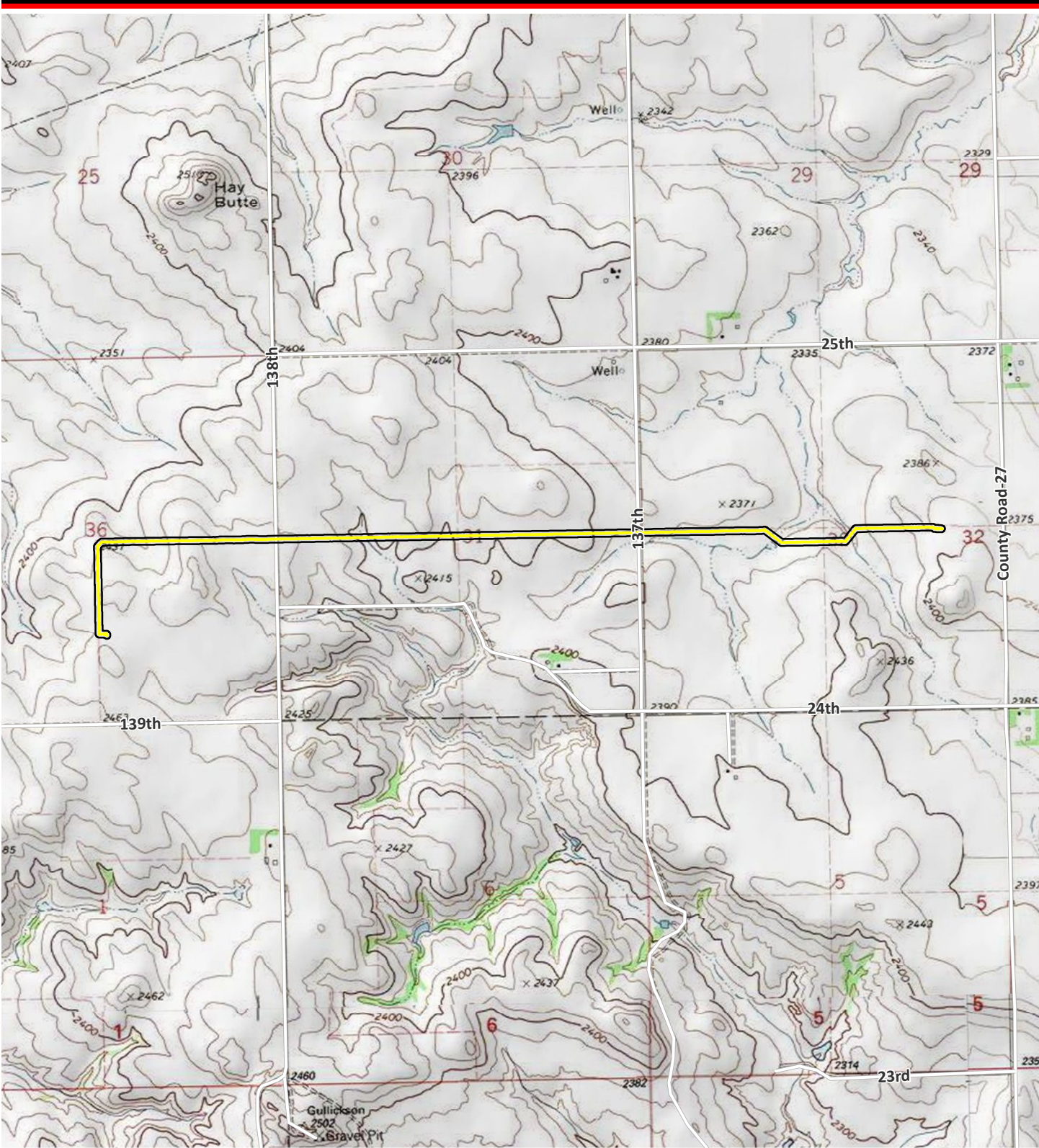
Sincerely,

WSP USA, Inc.

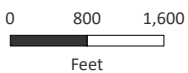
A handwritten signature in black ink that reads "Bonnie Gibson, RPA". The signature is written in a cursive style.

Bonnie Gibson, MBA, RPA
Senior Director – Local Business Lead

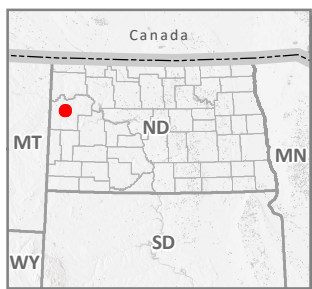
Attachment: Project Map



C:\PROJECTS\CaliberResidue\Maps\MXD\ProjectLocation.mxd USGS Topographic



Sources: ESRI 2020; WSP 2021.



- Road
- Pipeline Centerline
- Study Area

**Project Location Map-
USGS Topographic**
1:24,000

McKenzie County, North Dakota
October 2021

Caliber Residue Pipeline