

STATE OF NORTH DAKOTA
PUBLIC SERVICE COMMISSION

Montana-Dakota Utilities Co.
12-inch Water Pipeline Project – Morton County
Siting Application

Case No. PU-22-34

NOTICE OF FILING AND PUBLIC HEARING

February 23, 2022

A Public Hearing on the applications in Case No. PU-22-34 is scheduled to begin **April 5, 2022 at 9:00 AM CT, at the Mandan City Hall, Ed “Bosh” Froehlich Meeting Room, 205 Second Avenue Northwest, Mandan, ND 58554.**

On January 18, 2022, Montana-Dakota Utilities Co. filed a combined application for a certificate of corridor compatibility and route permit concerning the location of approximately 2684 feet of 12-inch water pipeline in Morton County, North Dakota, as shown on the attached map.

The issues in the application for a certificate of corridor compatibility and route permits are:

1. Will construction, operation, and maintenance of the facilities at the proposed locations produce minimal adverse effects on the environment and upon the welfare of the citizens of North Dakota?
2. Are the proposed facilities compatible with the environmental preservation and the efficient use of resources?
3. Will construction, operation, and maintenance of the facilities at the proposed locations minimize adverse human and environmental impact while ensuring continuing system reliability and integrity and ensuring that energy needs are met and fulfilled in an orderly and timely fashion?

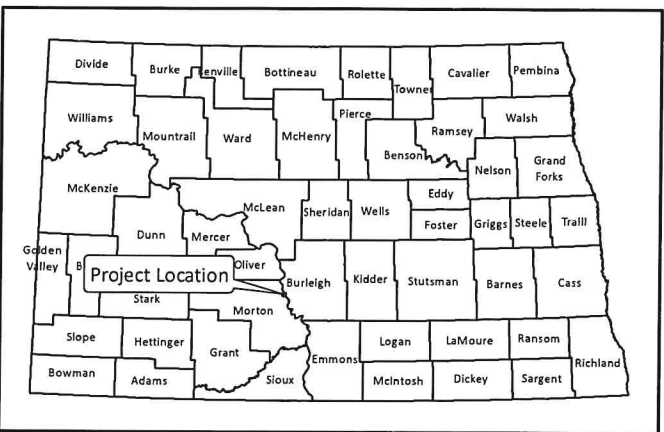
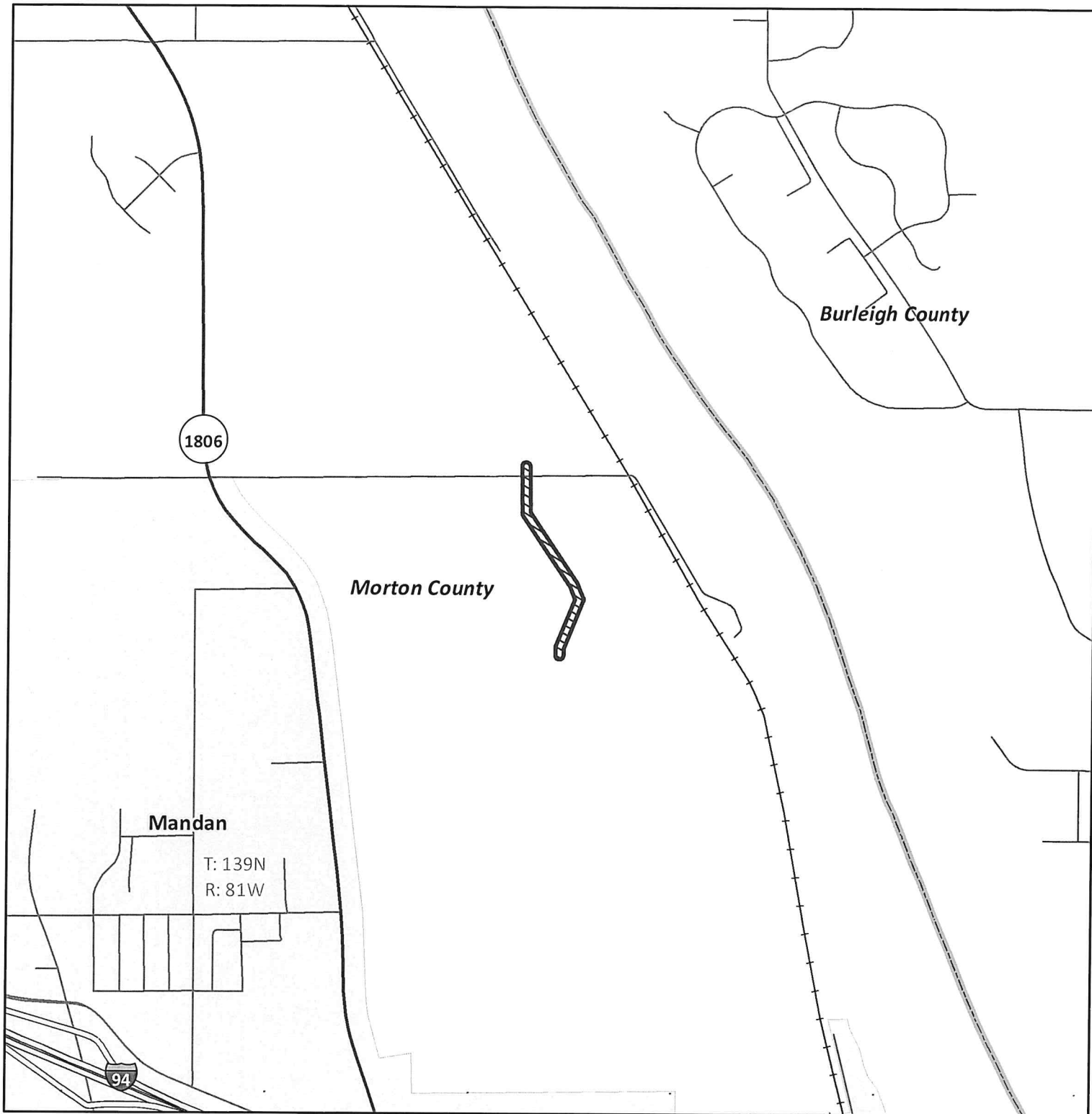
For more information contact the Public Service Commission, State Capitol, Bismarck, North Dakota 58505, 701-328-2400; or Relay North Dakota, 1-800-366-6888 TTY. If you require any auxiliary aids or services, such as readers, signers, or Braille materials, please notify the Commission at least 24 hours in advance.

PUBLIC SERVICE COMMISSION


Randy Christmann
Commissioner


Julie Fedorchak
Chair


Sheri Haugen-Hoffart
Commissioner



**Heskett Water Line
Montana-Dakota Utilities Co.
Morton County, ND**

- Project Corridor
- State Highway
- Interstate
- Mandan City Boundary

