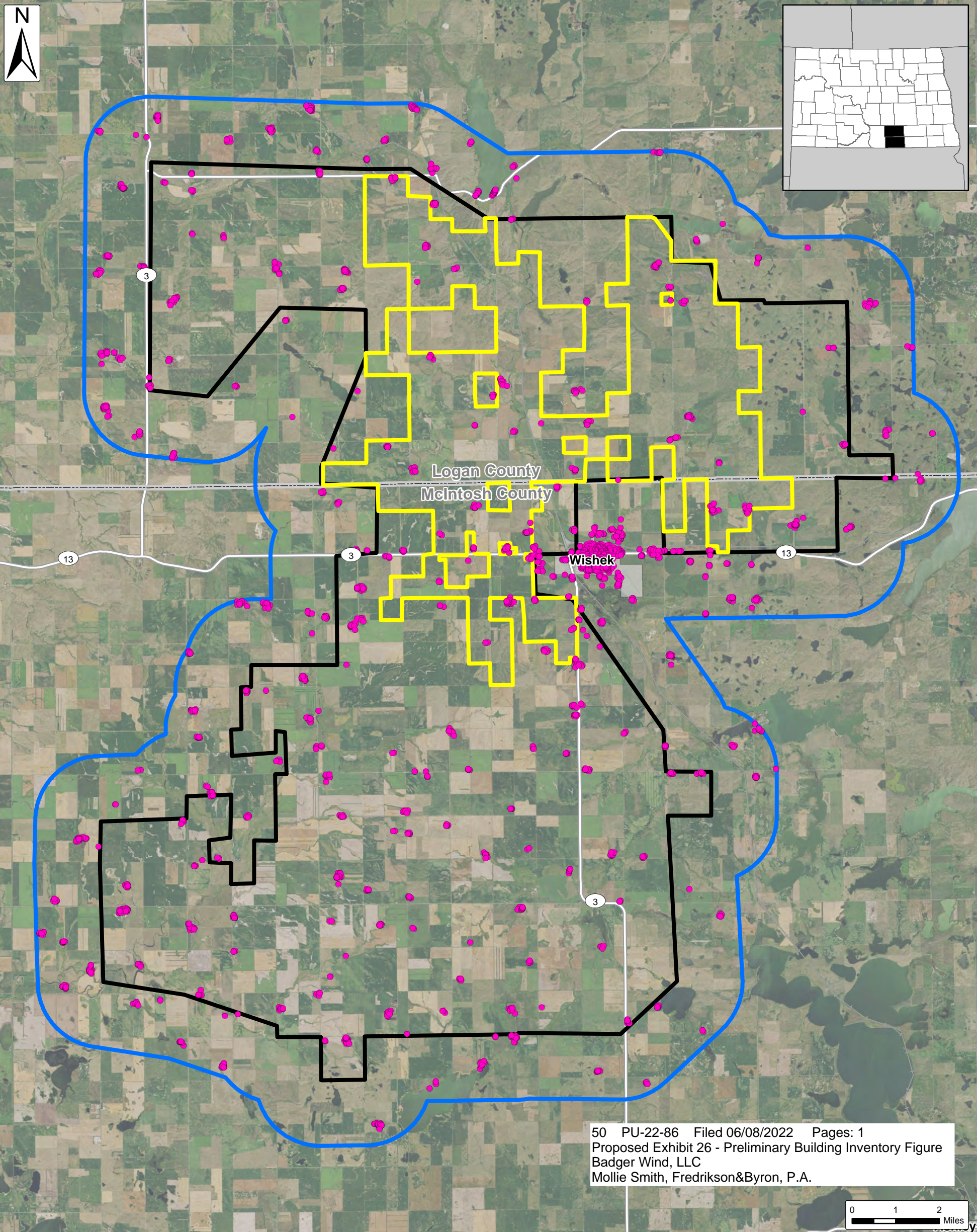


Badger Wind Preliminary Building Inventory

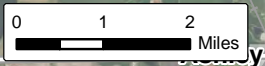
Logan County & McIntosh County, North Dakota

Client:
Badger Wind, LLC

Issue Date:
6/6/2022
Atwell, LLC Project:
19000785




50 PU-22-86 Filed 06/08/2022 Pages: 1
Proposed Exhibit 26 - Preliminary Building Inventory Figure
Badger Wind, LLC
Mollie Smith, Fredrikson&Byron, P.A.



• Preliminary Building Inventory	Project Area (±121,695 Ac.)
Current Project Area (±31,514 Ac.)	1.5-Mile Buffer
	City/Village
	Counties

SOURCE: USDA NAIP 2020 IMAGERY



ATWELL

The information contained on this map is proprietary and confidential. The use or disclosure of this information by you to third parties is prohibited by law and may give rise to civil or criminal liability.