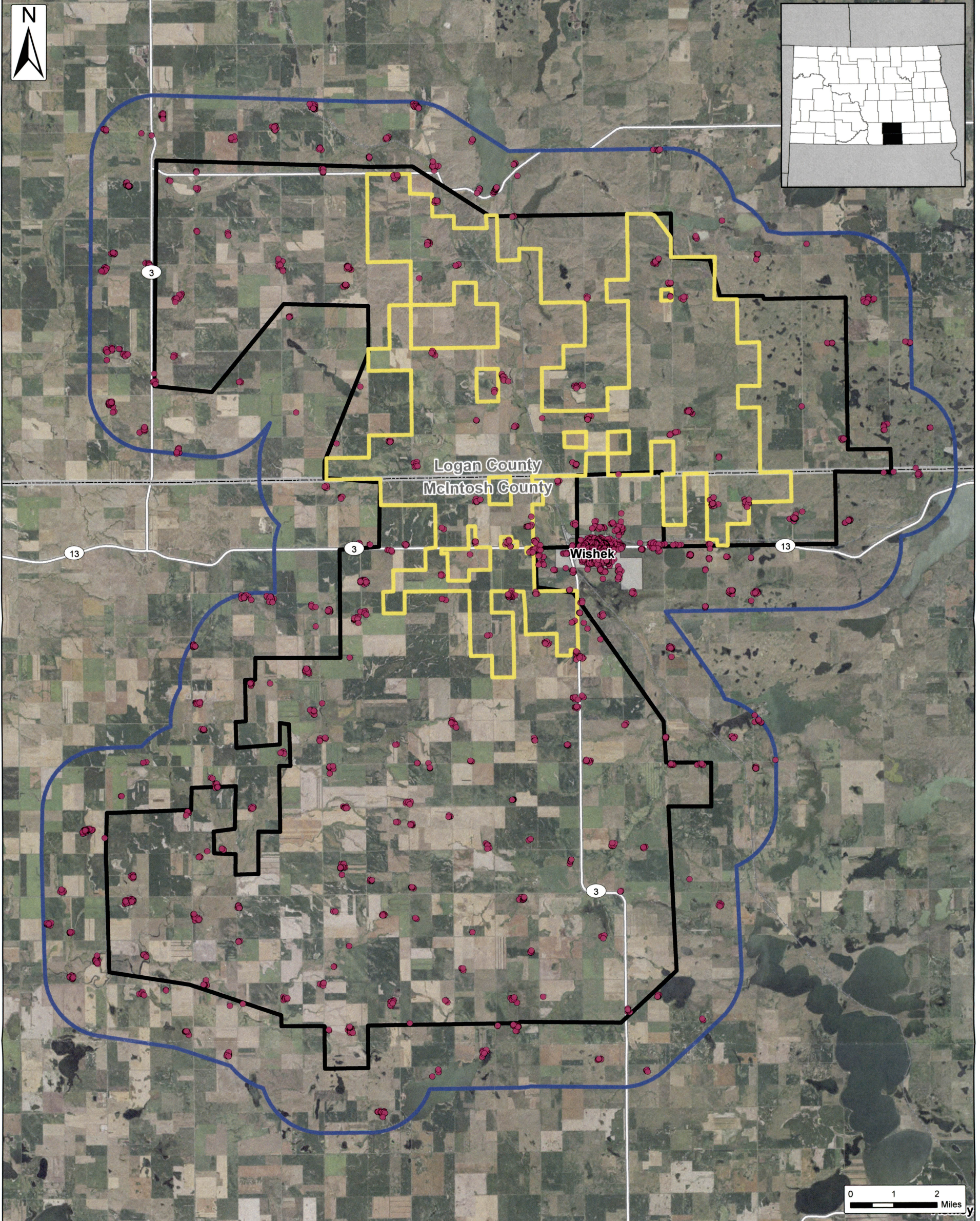


# Badger Wind Preliminary Building Inventory

Logan County & McIntosh County, North Dakota

Client:  
Badger Wind, LLC

Issue Date:  
6/6/2022  
Atwell, LLC Project:  
19000785



- Preliminary Building Inventory
- Current Project Area (±31,514 Ac.)
- Project Area (±121,695 Ac.)
- 1.5-Mile Buffer
- City/Village
- Counties

SOURCE: USDA NAIP 2020 IMAGERY



The information contained on this map is proprietary and confidential. The use or disclosure of this information by you to third parties is prohibited by law and may give rise to civil or criminal liability.