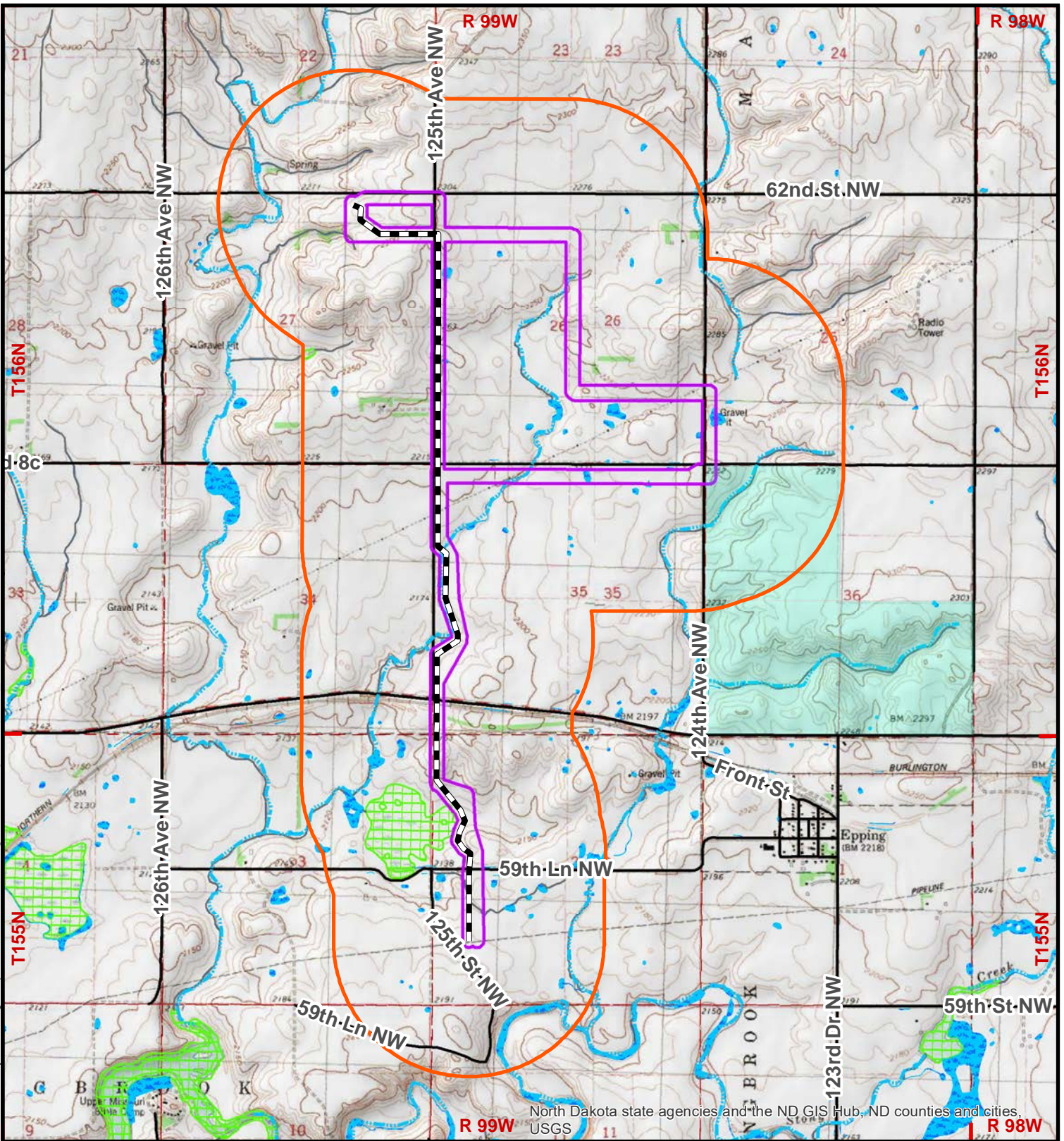
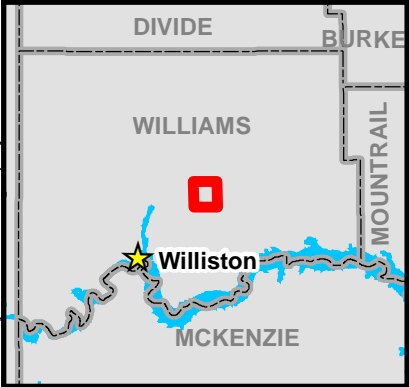


APPENDIX A: PROJECT MAPS

R:\projects\9501-1000\09716 - Buddy Domindgo Pipeline\ND_PSC\IPSC Figures Update_01282022\Topographic_Figure_Portrait.mxd
 February 2022

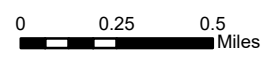


North Dakota state agencies and the ND GIS Hub, ND counties and cities, USGS



- Legend**
- Centerline
 - Study Corridor (1-Mile)
 - ND Surface Trust Land
 - Surveyed Area
 - NHD Intermittent Stream
 - National Wetland Inventory**
 - Freshwater Wetland
 - Waterbody
 - Riverine

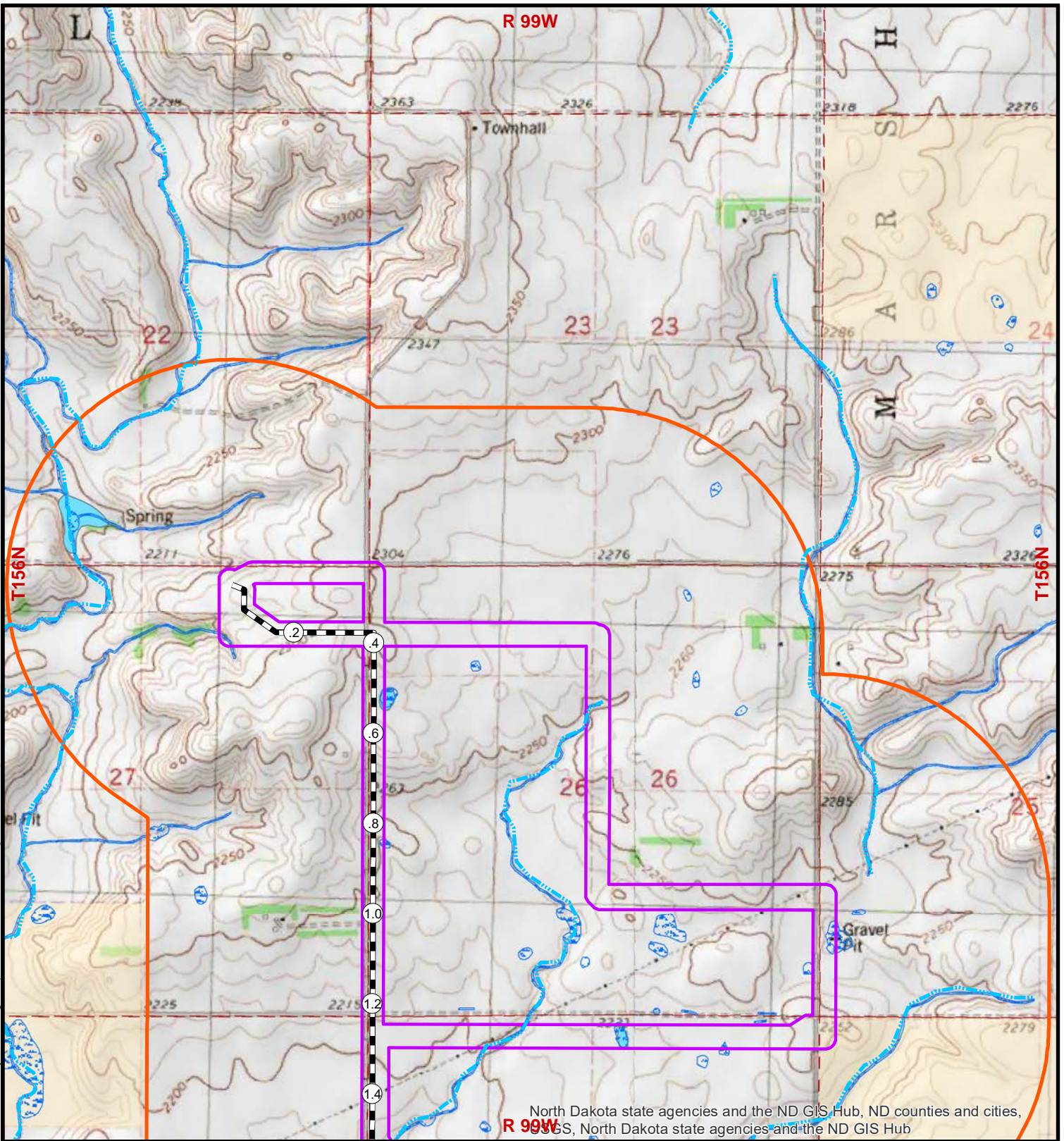
Continental Resources, Inc.
 Buddy Domindgo Transmission Line
 Topo Overview Map
 Williams County, North Dakota



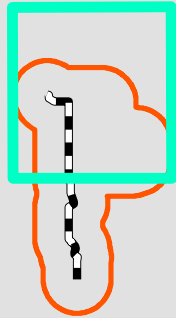
1:31,680



Basemap: ND GIS Hub_All_Elevation_TopoMap Shaded Relief 24K



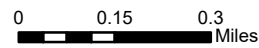
North Dakota state agencies and the ND GIS Hub, ND counties and cities, and the ND GIS Hub, North Dakota state agencies and the ND GIS Hub



Legend

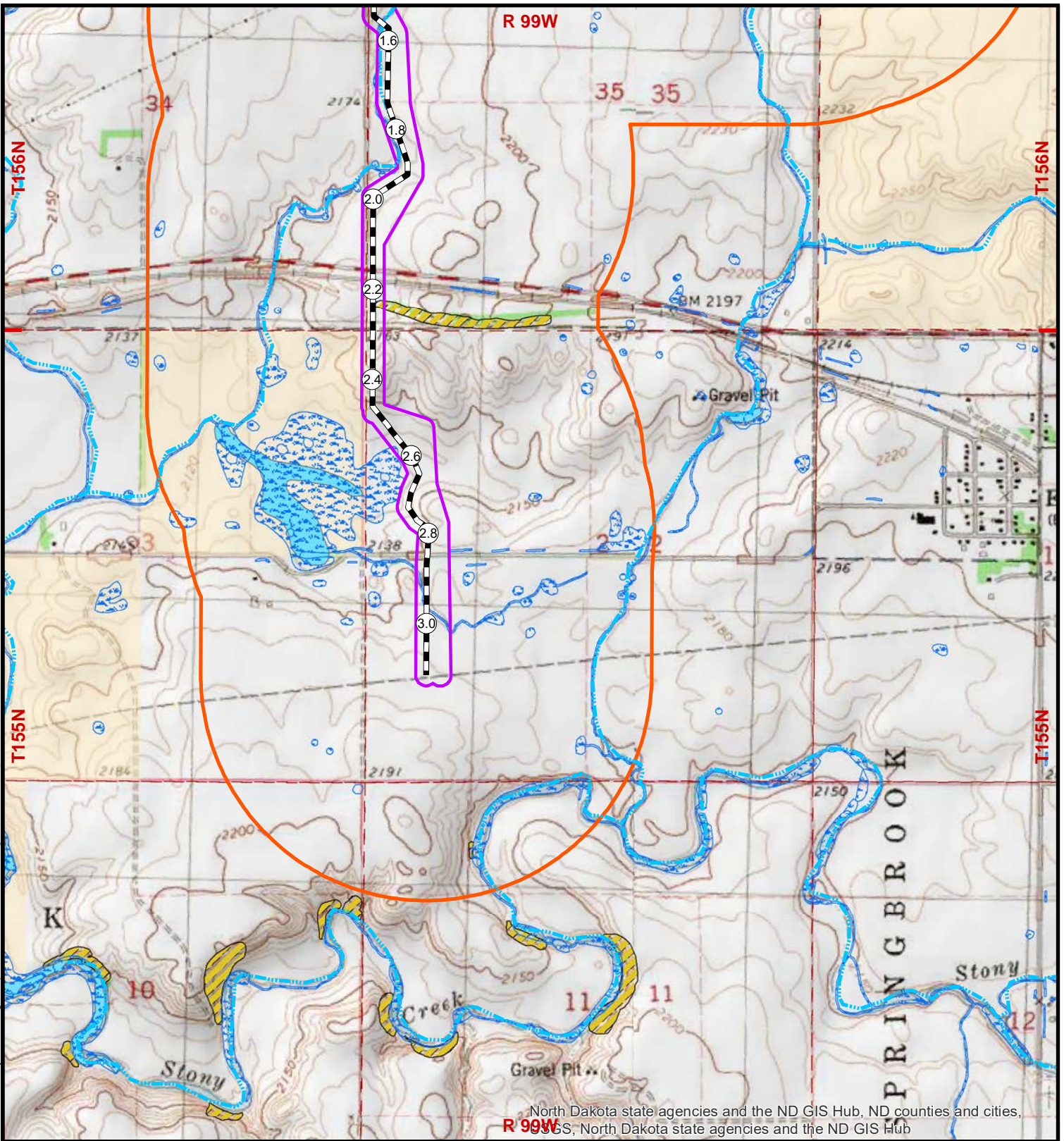
- Mile Post Marker
- Centerline
- NHD Intermittent Stream
- Study Corridor (1-Mile)
- Surveyed Area
- NWI Wetland
- NHD Waterbody
- Landslide Deposits
- Mineral Trust Lands

Continental Resources, Inc.
Buddy Domindgo Transmission Line
Natural Resource - Topo Map 1 of 2
Williams County, North Dakota

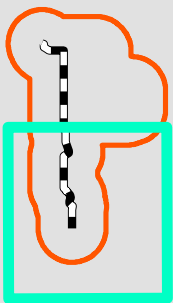


1:19,008





North Dakota state agencies and the ND GIS Hub, ND counties and cities, R 99W, North Dakota state agencies and the ND GIS Hub

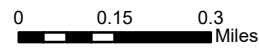


Legend

- Mile Post Marker
- Centerline
- NHD Intermittent Stream
- Study Corridor (1-Mile)
- Surveyed Area
- NWI Wetland
- NHD Waterbody
- Landslide Deposits
- Mineral Trust Lands



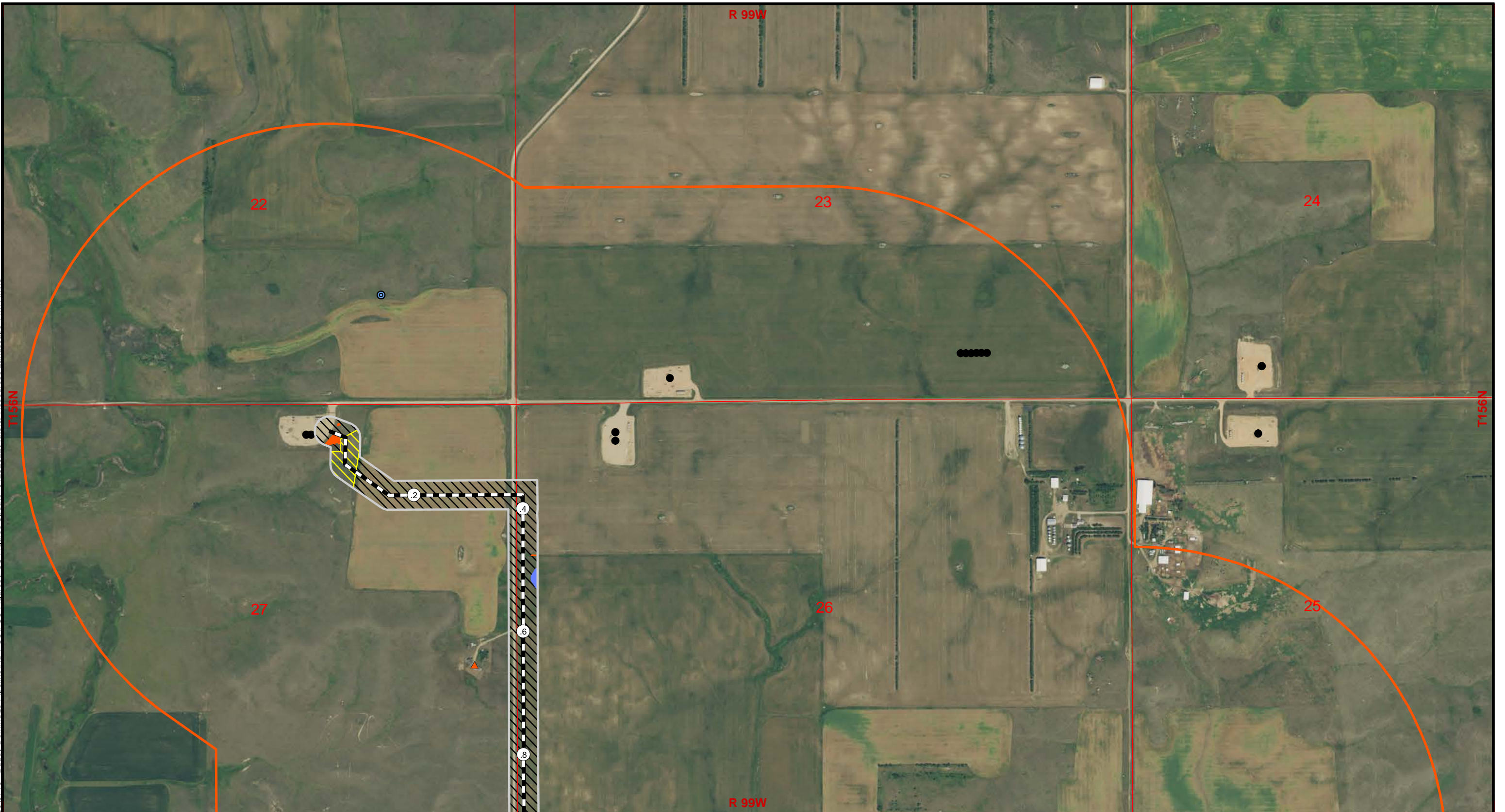
Continental Resources, Inc.
Buddy Domindgo Transmission Line
Natural Resource - Topo Map 2 of 2
Williams County, North Dakota



1:19,008



February 2022 R:\projects\9501-10000\9716 - Buddy Domindgo Pipeline\ND_PSC\Figures\Natural Resources Landscape 11x17.mxd



Legend

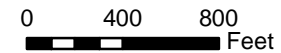
- | | | | | |
|-------------------------------------|-----------------|---------------------------|---|----------------|
| Centerline | Ephemeral Drain | DASK Habitat Grade | Mile Post | ND Well Data |
| Surveyed Area (250-ft / 95.3 Acres) | Wetland | No Habitat | Raptor Nest | Oil / Gas Well |
| Corridor (1-Mile) | Shrub Polygon | Poor Habitat | Potentially Occupied Structure within 1-Mile Corridor | |
| PLSS Section | Noxious Weeds | Moderate Habitat | Potentially Occupied Structure within 500 ft. of Centerline | |



Basemap: NAIP\North_Dakota_2020



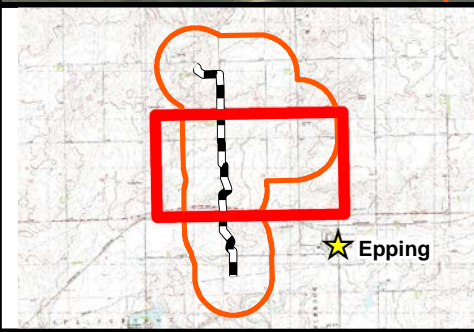
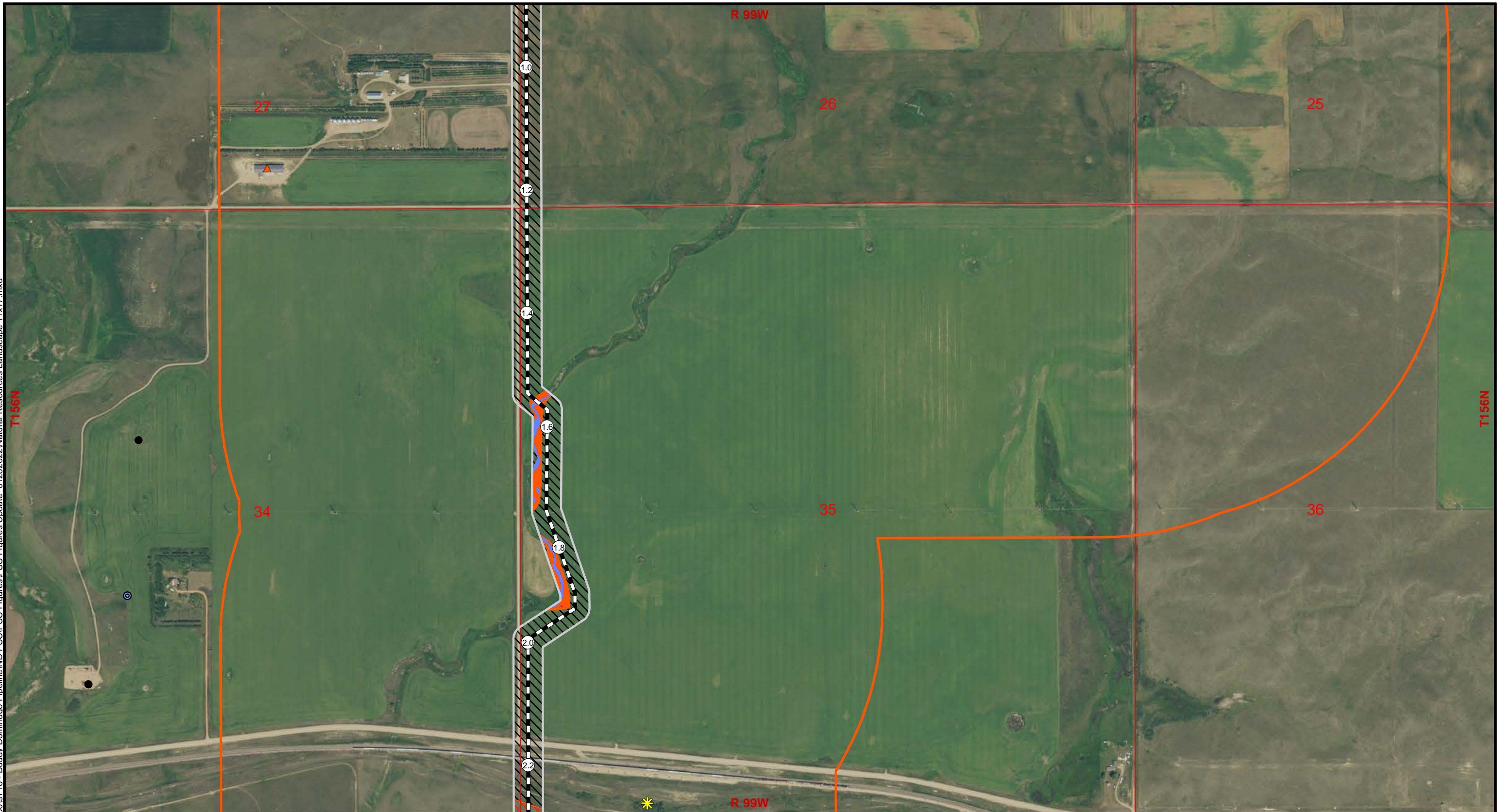
1:9,600



Continental Resources, Inc.
Buddy Domindgo Transmission Line

Natural Resource - Aerial Map 1 of 3
Williams County, North Dakota

February 2022 R:\projects\9501-10000\9716 - Buddy Domindgo Pipeline\ND_PSC\Figures\Natural Resources Landscape 11x17.mxd



Legend			
	Centerline		Ephemeral Drain
	Surveyed Area (250-ft / 95.3 Acres)		Wetland
	Corridor (1-Mile)		Shrub Polygon
	PLSS Section		Noxious Weeds
	DASK Habitat Grade No Habitat		Mile Post
	Poor Habitat		Raptor Nest
	Moderate Habitat		Potentially Occupied Structure within 1-Mile Corridor
	Potentially Occupied Structure within 500 ft. of Centerline		ND Well Data
	Oil / Gas Well		Oil / Gas Well

1:9,600

0 400 800 Feet

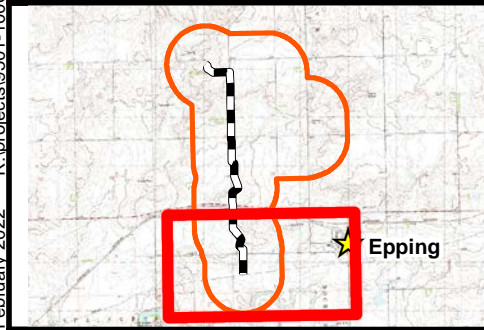
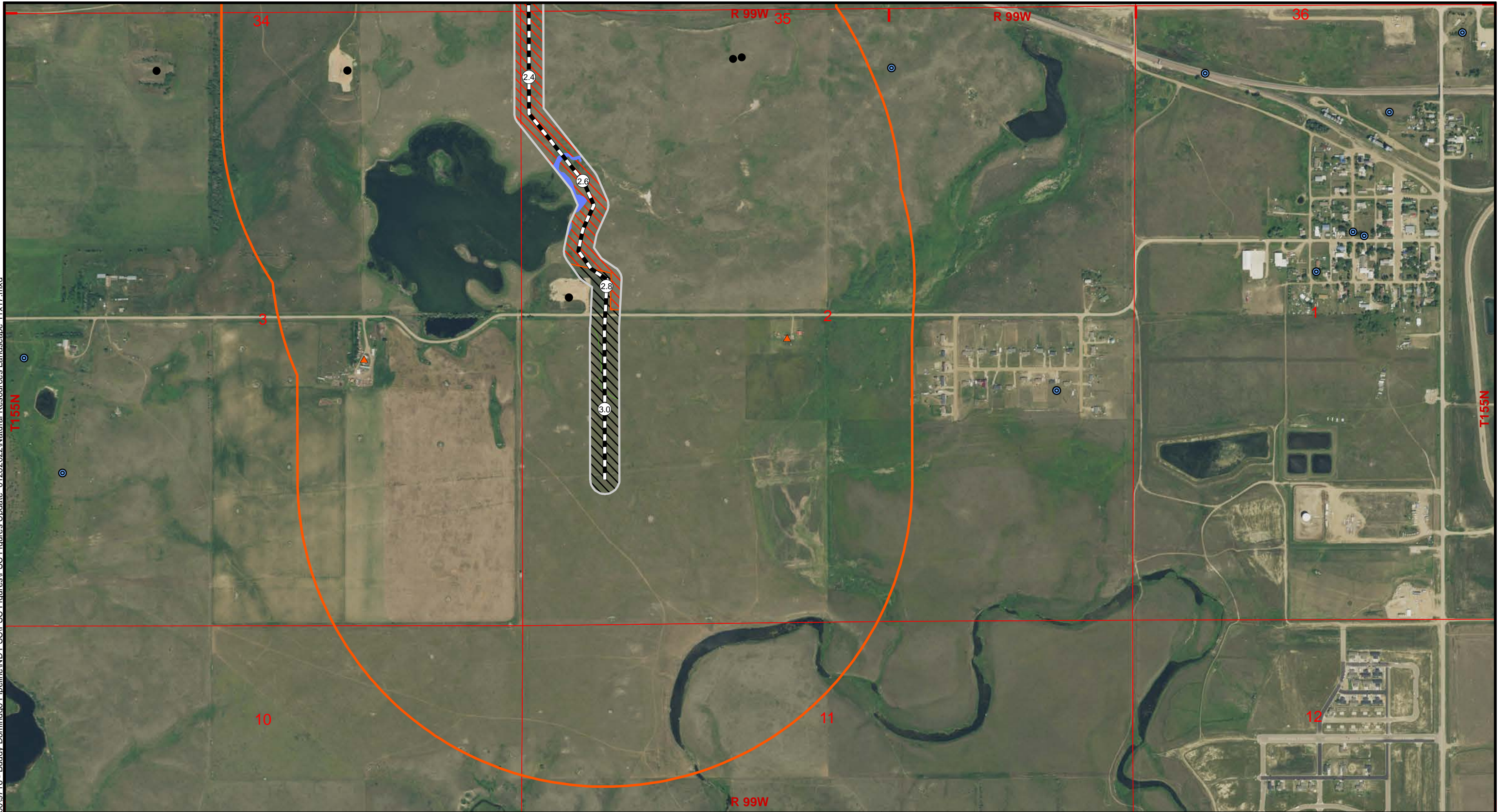
CARLSON McCAIN
ENVIRONMENTAL - ENGINEERING - LAND SURVEYING
3831 Lockport Street, Suite C, Bismarck, North Dakota 58501
www.carlsonmccain.com

Basemap: NAIP\North_Dakota_2020

Continental Resources, Inc.
Buddy Domindgo Transmission Line

Natural Resource - Aerial Map 2 of 3
Williams County, North Dakota

February 2022 R:\projects\9501-10000\9716 - Buddy Domindgo Pipeline\ND_PSC\Figures\Natural Resources Landscape 11x17.mxd



Legend

- | | | | | |
|-------------------------------------|-----------------|---------------------------|---|----------------|
| Centerline | Ephemeral Drain | DASK Habitat Grade | Mile Post | ND Well Data |
| Surveyed Area (250-ft / 95.3 Acres) | Wetland | No Habitat | Raptor Nest | Oil / Gas Well |
| Corridor (1-Mile) | Shrub Polygon | Poor Habitat | Potentially Occupied Structure within 1-Mile Corridor | |
| PLSS Section | Noxious Weeds | Moderate Habitat | Potentially Occupied Structure within 500 ft. of Centerline | |



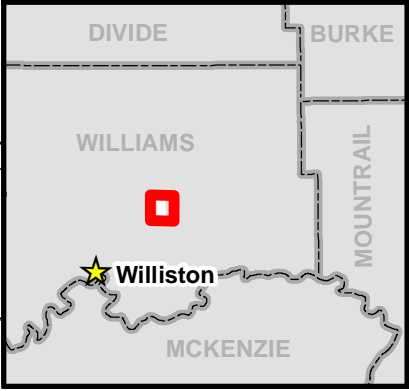
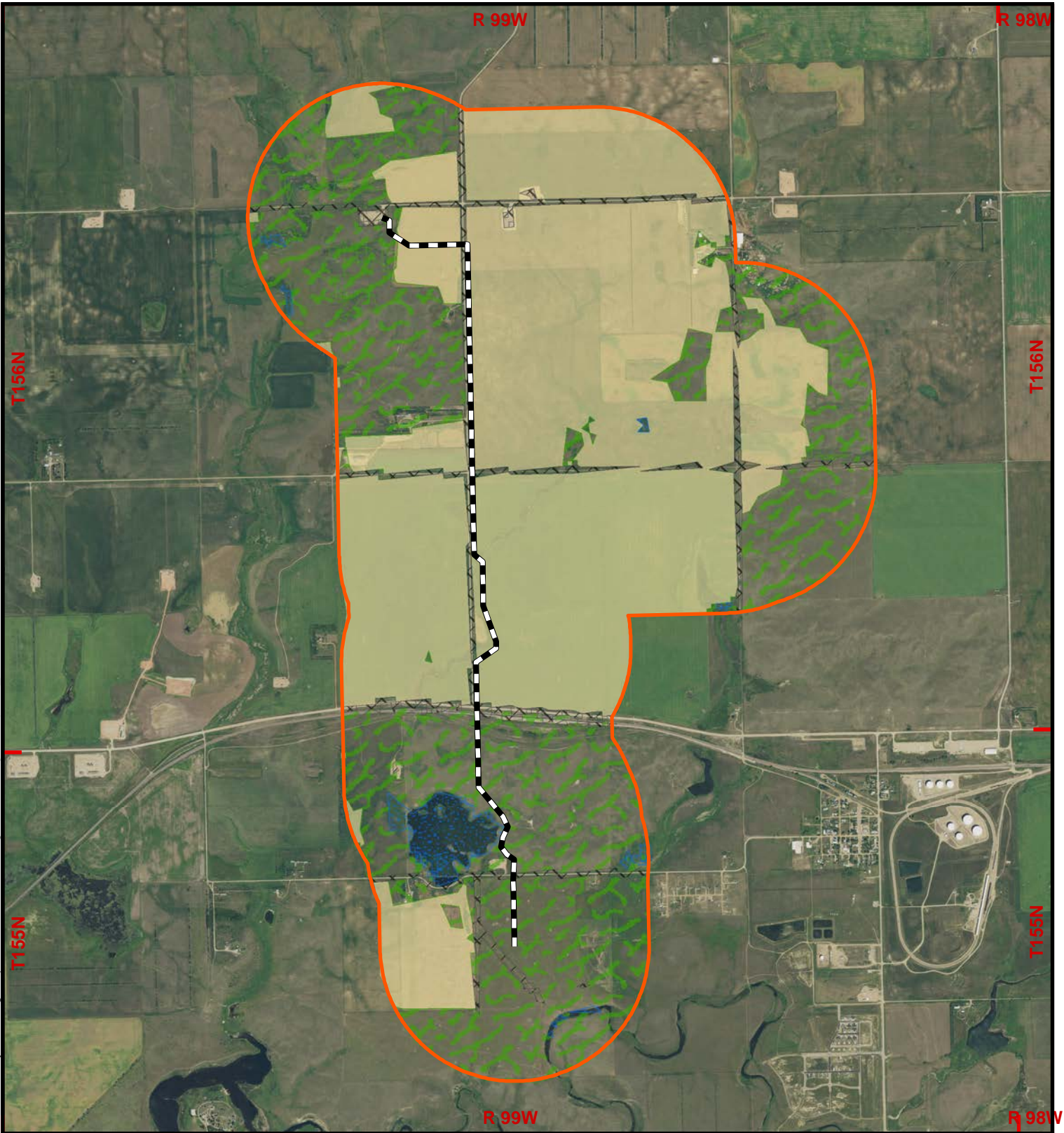
Basemap: NAIP\North_Dakota_2020



1:9,600
0 400 800 Feet

Continental Resources, Inc.
Buddy Domindgo Transmission Line
Natural Resource - Aerial Map 3 of 3
Williams County, North Dakota

R:\projects\9501-10000\9716 - Buddy Domindgo Pipeline\ND_PSC\PSC Figures\Update_01282022\Land and Cover Map.mxd



Legend

- Centerline
- Corridor (1-Mile)

GAP Land Cover

- Cultivated Crops
- Developed and Other Human Use
- Wetlands and Waterbodies
- Shrubland and Grassland

Continental Resources, Inc.
 Buddy Domindgo Transmission Line

Land Cover Map
 Williams County, North Dakota

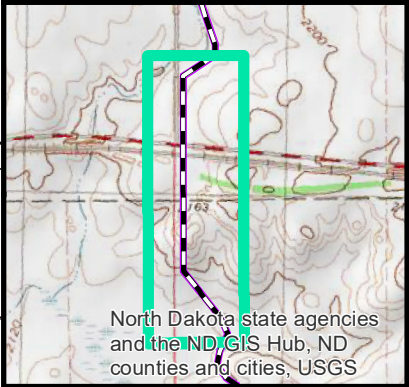
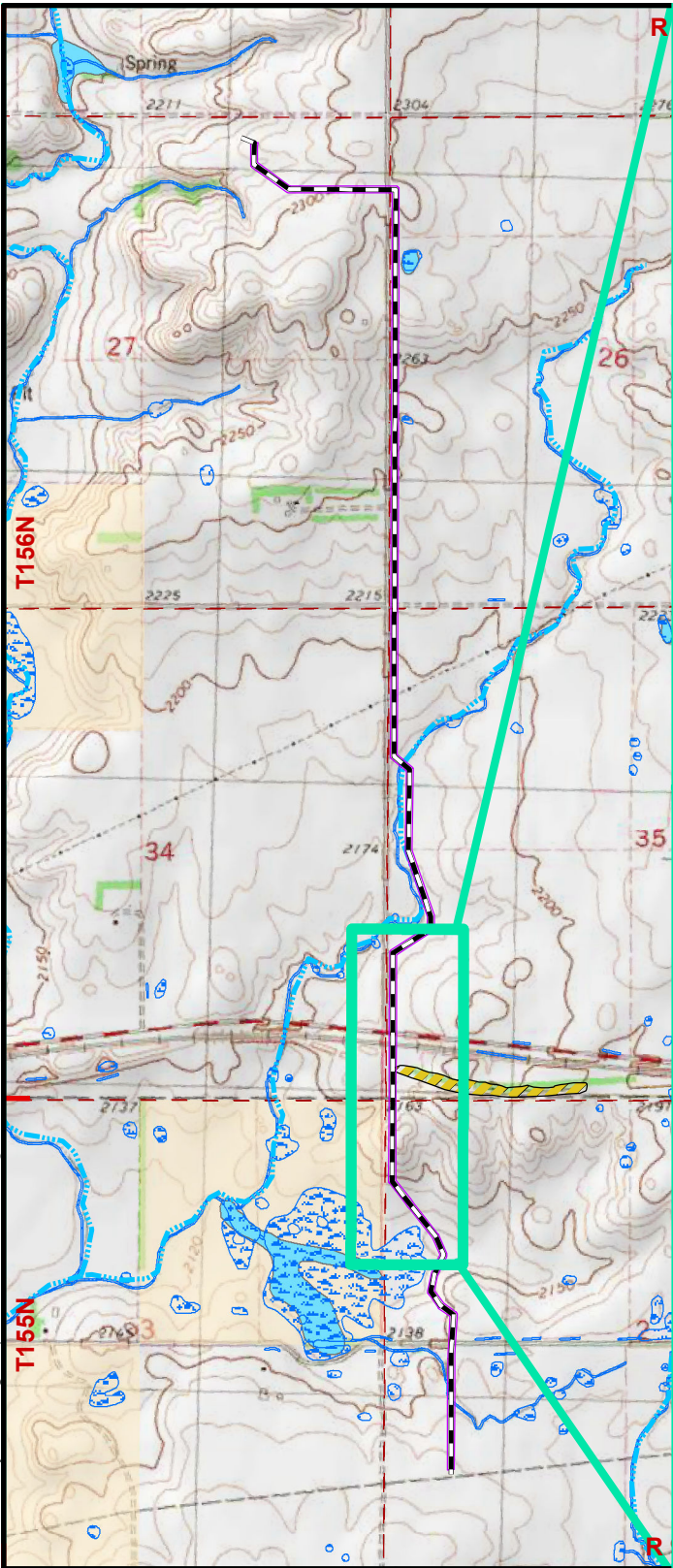
0 0.25 0.5
Miles

1:31,680

**CARLSON
MCCAIN**
ENVIRONMENTAL • ENGINEERING • LAND SURVEYING
 3831 Lockport Street, Suite C, Bismarck, North Dakota 58503
 www.carlsonmccain.com

Basemap: ND GIS Hub_AerialImage_ND_2020

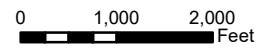
February 2022



North Dakota state agencies
and the ND GIS Hub, ND
counties and cities, USGS

- Legend
- Centerline
 - NHD Intermittent Stream
 - ROW (75-Foot)
 - Landslide Deposits
 - NWI Wetland
 - NHD Waterbody
 - Mineral Trust Lands

Continental Resources, Inc.
Buddy Domindgo Transmission Line
Landslide Deposits Map
Williams County, North Dakota



1:24,000

