

Appendix A



Montana-Dakota Utilities Co.

A Division of MDU Resources Group, Inc.

400 N 4th Street
Bismarck, ND 58501

State of North Dakota Electric Rate Schedule

NDPSC Volume 4
5th Revised Sheet No. 1
Canceling 4th Revised Sheet No. 1

TABLE OF CONTENTS

Page 1 of 2

<u>Designation</u>	<u>Title</u>	<u>Sheet No.</u>
	Table of Contents	1-1.1
	Communities Served	2-2.1
10	Residential Electric Service	3
13	Optional Residential Electric Thermal Energy Storage Service	4-4.1
	Reserved	5-6
16	Optional Time-of-Day Residential Electric Service	7-7.1
	Reserved	8-9
20	Small General Electric Service	10-10.1
	Reserved	11-13
25	Irrigation Power Service	14-14.1
26	Optional Time-of-Day Small General Electric Service	15-15.1
	Reserved	16-17
30	General Electric Service	18-18.1
31	Optional Time-of-Day General Electric Service	19-19.2
32	General Electric Space Heating Service	20-20.2
	Reserved	21
34	Firm Service Economic Development	22-22.2
38	Interruptible Large Power Demand Response	23-23.3
	Reserved	24
40	Small Municipal Electric Service	25-25.2
41	Municipal Lighting Service	26-26.1
	Reserved	27-31
48	Municipal Pumping Service	32-32.1
	Reserved	33-35
52	Outdoor Lighting Service	36-36.1
	Reserved	37-38
55	Renewable Resource Cost Adjustment	39
56	Generation Resource Recovery Rider	40-40.1
57	Environmental Cost Recovery Rider	41

Date Filed: June 26, 2017

Effective Date: Service rendered on and
after August 7, 2017

Issued By: Tamie A. Aberle
Director – Regulatory Affairs

Case No.: PU-16-666



Montana-Dakota Utilities Co.

A Division of MDU Resources Group, Inc.

400 N 4th Street
Bismarck, ND 58501

State of North Dakota Electric Rate Schedule

NDPSC Volume 4
6th Revised Sheet No. 1.1
Canceling 5th Revised Sheet No. 1.1

TABLE OF CONTENTS

Page 2 of 2

<u>Designation</u>	<u>Title</u>	<u>Sheet No.</u>
58	Fuel and Purchased Power Adjustment	42-42.2
59	Transmission Cost Adjustment	43-43.1
95	Occasional Power Purchase Non-Time Differentiated	44-44.2
96	Parallel Generation Peaking Facility Purchase	
	Time Differentiated	45-45.2
	Reserved	46-47
100	General Provisions	49-49.8
	Reserved	50-57
110	Electric Service Rules and Regulations	58-58.31
	Reserved	59
112	Electric Extension Policy	60-60.2
	Reserved	61-67
131	Selective Testing Plan for Watthour Meters	68-68.2
	Reserved	69-73
140	Small Qualifying Facilities (SQF) General Rules	74-74.2

Date Filed: June 26, 2017

Effective Date: Service rendered on and
after August 7, 2017

Issued By: Tamie A. Aberle
Director – Regulatory Affairs

Case No.: PU-16-666



Montana-Dakota Utilities Co.

A Division of MDU Resources Group, Inc.

400 N 4th Street
Bismarck, ND 58501

State of North Dakota Electric Rate Schedule

NDPSC Volume 4
1st Revised Sheet No. 2
Canceling Original Sheet No. 2

COMMUNITIES SERVED

Page 1 of 2

ELECTRIC SERVICE

Dakota Heartland Region

Almont	Glen Ullin	Napoleon
Apple Valley	Golden Valley	New Leipzig
Ashley	Hague	New Salem
Beulah	Hazelton	Selfridge
Bismarck*	Hazen	Steele
Braddock	Heil	Sterling
Burnstad	Judson	Strasburg
Carson	Kintrye	Tappen
Center	Kulm	Venturia
Dawson	Lehr	Wishek
Driscoll	Leith	Zeeland
Elgin	Linton	
Ellendale	Mandan	
Forbes	McKenzie	
Fredonia	Merricourt	
Fullerton	Monango	

*Designates Region Office

Date Filed: October 13, 2010

Effective Date: November 13, 2010

Issued By: Tamie A. Aberle
Pricing & Tariff Manager

Case No.: PU-10-609



Montana-Dakota Utilities Co.

A Division of MDU Resources Group, Inc.

400 N 4th Street
Bismarck, ND 58501

State of North Dakota Electric Rate Schedule

NDPSC Volume 4

2nd Revised Sheet No. 2.1

Canceling 1st Revised Sheet No. 2.1

COMMUNITIES SERVED

Page 2 of 2

ELECTRIC SERVICE

Badlands Region

Alamo	Flaxton	Portal
Alexander	Gladstone	Powers Lake
Ambrose	Gascoyne	Rawson
Appam	Grenora	Ray
Arnegard	Halliday	Reeder
Battleview	Hamlet	Regent
Beach	Hanks	Rhame
Belfield	Haynes	Richardton
Bentley	Hebron	Ross
Bowbells	Hettinger	Scranton
Bowman	Kenmare	Sentinel Butte
Bucyrus	Killdeer	Sherwood
Burt	Larson	South Heart
Carpio	Lemmon	Springbrook
Columbus	Lignite	Stanley
Corinth	Loraine	Taylor
Corteau	Marmarth	Tioga
Coulee	McGregor	Tolley
Crosby	Mohall	Watford City
Dickinson*	Morristown	Werner
Dodge	Mott	Wheelock
Donnybrook	New England	Wildrose
Dunn Center	Noonan	Williston
East Fairview	Norma	Zahl
Epping	Northgate	

*Designates Region Office

Date Filed: January 19, 2012

Effective Date: February 19, 2012

Issued By: Tamie A. Aberle
Regulatory Affairs Manager

Case No.: PU-12-045



Montana-Dakota Utilities Co.

A Division of MDU Resources Group, Inc.

400 N 4th Street
Bismarck, ND 58501

State of North Dakota Electric Rate Schedule

NDPSC Volume 4
9th Revised Sheet No. 3
Canceling 8th Revised Sheet No. 3

RESIDENTIAL ELECTRIC SERVICE Rate 10

Page 1 of 1

Availability:

In all communities served for single-phase residential electric service for domestic purposes only.

Rate:

Basic Service Charge:	\$0.46 per day
Energy Charge:	
October – May:	
First 750 Kwh per month	5.678¢ per Kwh
Over 750 Kwh per month	2.678¢ per Kwh
June – September:	5.678¢ per Kwh

Minimum Bill:

Basic Service Charge.

Payment:

Bills will be considered past due if not paid by the due date shown on the bill. Past due bills are subject to a late payment charge in accordance with the provisions of Rate 100 or any amendments or alterations thereto.

Adjustment Clauses:

Bills are subject to the following adjustments or any amendments or alterations thereto:

1. Renewable Resource Cost Adjustment Rate 55
2. Generation Resource Recovery Rider Rate 56
3. Environmental Cost Recovery Rider Rate 57
4. Fuel and Purchased Power Adjustment Rate 58
5. Transmission Cost Adjustment Rate 59

General Terms and Conditions:

The foregoing schedule is subject to Rates 100-112 and any amendments or alterations thereto or additional rules and regulations promulgated by the Company under the laws of the state.

Date Filed: October 8, 2018

Effective Date: Service rendered on and after December 1, 2018

Issued By: Tamie A. Aberle
Director - Regulatory Affairs

Case No.: PU-18-89



Montana-Dakota Utilities Co.

A Division of MDU Resources Group, Inc.

400 N 4th Street
Bismarck, ND 58501

State of North Dakota Electric Rate Schedule

NDPSC Volume 4
1st Revised Sheet No. 3.1
Canceling Original Sheet No. 3.1

Reserved for Future Use

Date Filed: June 26, 2017

Effective Date: Service rendered on and
after August 7, 2017

Issued By: Tamie A. Aberle
Director - Regulatory Affairs

Case No.: PU-16-666



Montana-Dakota Utilities Co.

A Division of MDU Resources Group, Inc.

400 N 4th Street
Bismarck, ND 58501

State of North Dakota Electric Rate Schedule

NDPSC Volume 4
3rd Revised Sheet No. 4
Canceling 2nd Revised Sheet No. 4

OPTIONAL RESIDENTIAL ELECTRIC THERMAL ENERGY STORAGE SERVICE Rate 13

Page 1 of 2

Availability:

In all communities served for single-phase residential electric for customers operating Company approved thermal energy storage facilities for the purpose of utilizing off-peak electric energy for space conditioning purposes where electric space heating is the primary heating source. Service under this rate is not available when another energy source provided by the Company is utilized as a back-up heating source.

Rate:

Basic Service Charge: \$0.75 per day

Off-Peak Energy Charge:

For all energy used during the designated hours of 10:00 p.m. to 8:00 a.m. local time.

October – May: 1.100¢ per Kwh

On-Peak Energy Charge:

For all energy not covered by the Off-Peak rating period.

October – May:

First 750 Kwh per month 5.846¢ per Kwh

Over 750 Kwh per month 2.846¢ per Kwh

June – September: 5.846¢ per Kwh

Minimum Bill:

Basic Service Charge.

Payment:

Bills will be considered past due if not paid by the due date shown on the bill. Past due bills are subject to a late payment charge in accordance with the provisions of Rate 100 or any amendments or alterations thereto.

Date Filed: October 8, 2018

Effective Date: Service rendered on and after December 1, 2018

Issued By: Tamie A. Aberle
Director - Regulatory Affairs

Case No.: PU-18-89



Montana-Dakota Utilities Co.

A Division of MDU Resources Group, Inc.

400 N 4th Street
Bismarck, ND 58501

State of North Dakota Electric Rate Schedule

NDPSC Volume 4
4th Revised Sheet No. 4.1
Canceling 3rd Revised Sheet No. 4.1

OPTIONAL RESIDENTIAL ELECTRIC THERMAL ENERGY STORAGE SERVICE Rate 13

Page 2 of 2

Adjustment Clauses:

Bills are subject to the following adjustments or any amendments or alterations thereto:

1. Renewable Resource Cost Adjustment Rate 55
2. Generation Resource Recovery Rider Rate 56
3. Environmental Cost Recovery Rider Rate 57
4. Fuel and Purchased Power Adjustment Rate 58
5. Transmission Cost Adjustment Rate 59

General Terms and Conditions:

1. Thermal storage space heating facilities can include the thermal storage device(s), air-source heat pumps, and associated air handling units.
2. Unless approved by the Company the maximum thermal storage facilities that may be connected under this rate schedule is 50 Kw.
3. The foregoing schedule is subject to Rates 100-112 and any amendments or alterations thereto or additional rules and regulations promulgated by the Company under the laws of the state.

Date Filed: October 21, 2015

Effective Date: Service rendered on and
after January 7, 2016

Issued By: Tamie A. Aberle
Director - Regulatory Affairs

Case No.: PU-15-703



Montana-Dakota Utilities Co.

A Division of MDU Resources Group, Inc.

400 N 4th Street
Bismarck, ND 58501

State of North Dakota Electric Rate Schedule

NDPSC Volume 4
11th Revised Sheet No. 7
Canceling 10th Revised Sheet No. 7

OPTIONAL TIME-OF-DAY RESIDENTIAL ELECTRIC SERVICE Rate 16

Page 1 of 2

Availability:

In all communities served for single-phase residential electric service. The customer's wiring must be so arranged that all service can be measured through one meter.

Rate:

Basic Service Charge: \$0.75 per day

On-Peak Energy:

For all Kwh's used during peak hours designated as 12 p.m. to 8 p.m. local time, Monday through Friday.

October – May 5.718¢ per Kwh

June – September 7.218¢ per Kwh

Off-Peak Energy:

For all energy not covered by the On-Peak rating period.

October – May 2.718¢ per Kwh

June – September 4.218¢ per Kwh

Minimum Bill:

Basic Service Charge.

Payment:

Bills will be considered past due if not paid by the due date shown on the bill. Past due bills are subject to a late payment charge in accordance with the provisions of Rate 100 or any amendments or alterations thereto.

Adjustment Clauses:

Bills are subject to the following adjustments or any amendments or alterations thereto:

Date Filed: October 8, 2018

Effective Date: Service rendered on and after December 1, 2018

Issued By: Tamie A. Aberle
Director - Regulatory Affairs

Case No.: PU-18-89



Montana-Dakota Utilities Co.

A Division of MDU Resources Group, Inc.

400 N 4th Street
Bismarck, ND 58501

State of North Dakota Electric Rate Schedule

NDPSC Volume 4

3rd Revised Sheet No. 7.1

Canceling 2nd Revised Sheet No. 7.1

OPTIONAL TIME-OF-DAY RESIDENTIAL ELECTRIC SERVICE Rate 16

Page 2 of 2

1. Renewable Resource Cost Adjustment Rate 55
2. Generation Resource Recovery Rider Rate 56
3. Environmental Cost Recovery Rider Rate 57
4. Fuel and Purchased Power Adjustment Rate 58
5. Transmission Cost Adjustment Rate 59

Contract Terms:

Customer agrees to contract for service under the Optional Time-of-Day Residential Electric Service rate for a minimum period of one year. At the end of a one-year period, customer shall have the option of remaining under the Optional Time-of-Day Residential Electric Service rate or returning to the regular Residential Electric Service rate.

General Terms and Conditions:

The foregoing schedule is subject to Rates 100-112 and any amendments or alterations thereto or additional rules and regulations promulgated by the Company under the laws of the state.

Date Filed: November 21, 2016

Effective Date: Service rendered on and
after December 13, 2016

Issued By: Tamie A. Aberle
Director – Regulatory Affairs

Case No.: PU-16-666



Montana-Dakota Utilities Co.

A Division of MDU Resources Group, Inc.

400 N 4th Street
Bismarck, ND 58501

State of North Dakota Electric Rate Schedule

NDPSC Volume 4
9th Revised Sheet No. 10
Canceling 8th Revised Sheet No. 10

SMALL GENERAL ELECTRIC SERVICE Rate 20

Page 1 of 2

Availability:

In all communities served for all types of general electric service with billing demands that do not warrant the installation of a demand meter except outside lighting, standby, resale or other customers covered by special contracts or rate schedules applicable to specific services. The customer's wiring must be so arranged so that all service can be measured through one meter. If the customer does not connect his wiring into a single system, each meter shall constitute a separate billing unit.

Rate:

Basic Service Charge: \$0.84 per day

Energy Charge:

October – May:

First 750 Kwh per month 5.997¢ per Kwh

Over 750 Kwh per month 2.997¢ per Kwh

June – September: 5.997¢ per Kwh

Minimum Bill:

Basic Service Charge.

Payment:

Bills will be considered past due if not paid by the due date shown on the bill. Past due bills are subject to a late payment charge in accordance with the provisions of Rate 100 or any amendments or alterations thereto.

Adjustment Clauses:

Bills are subject to the following adjustments or any amendments or alterations thereto:

1. Renewable Resource Cost Adjustment Rate 55
2. Generation Resource Recovery Rider Rate 56
3. Environmental Cost Recovery Rider Rate 57
4. Fuel and Purchased Power Adjustment Rate 58
5. Transmission Cost Adjustment Rate 59

Date Filed: October 8, 2018

Effective Date: Service rendered on and after December 1, 2018

Issued By: Tamie A. Aberle
Director - Regulatory Affairs

Case No.: PU-18-89



Montana-Dakota Utilities Co.

A Division of MDU Resources Group, Inc.

400 N 4th Street
Bismarck, ND 58501

State of North Dakota Electric Rate Schedule

NDPSC Volume 4

3rd Revised Sheet No. 10.1

Canceling 2nd Revised Sheet No. 10.1

SMALL GENERAL ELECTRIC SERVICE Rate 20

Page 2 of 2

General Terms and Conditions:

1. Customers or their architects, contractors and electricians should consult with the Company before proceeding to design or erect installations in which there will be a substantial electric load, to make sure their equipment will meet requirements and receive adequate service.
2. Customer may take service under this rate provided customer's monthly Kwh will not exceed 4,000 Kwh per month for four consecutive months or connected load will not exceed 20 Kw.
3. Non-metered services. At the Company's discretion, the installation of a meter on a customer's service may not be warranted. In the absence of measuring a customer's use, customers will be billed a predetermined energy use amount each month based on the operating characteristics of the equipment being served, such as Wi-Fi equipment served on Company-owned poles.
4. The foregoing schedule is subject to Rates 100-112 and any amendments or alterations thereto or additional rules and regulations promulgated by the Company under the laws of the state.

Date Filed: June 26, 2017

Effective Date: Service rendered on and
after August 7, 2017

Issued By: Tamie A. Aberle
Director - Regulatory Affairs

Case No.: PU-16-666



Montana-Dakota Utilities Co.

A Division of MDU Resources Group, Inc.

400 N 4th Street
Bismarck, ND 58501

State of North Dakota Electric Rate Schedule

NDPSC Volume 4
5th Revised Sheet No. 14
Canceling 4th Revised Sheet No. 14

IRRIGATION POWER SERVICE Rate 25

Page 1 of 2

Availability:

For irrigation power service.

Rate:

Basic Service Charge:	\$1.50 per day
Demand Charge:	
October – May	\$1.25 per Kw
June – September	\$4.25 per Kw
Energy Charge:	0.186¢ per Kwh

Minimum Bill:

Basic Service Charge.

Payment:

Bills will be considered past due if not paid by the due date shown on the bill. Past due bills are subject to a late payment charge in accordance with the provisions of Rate 100 or any amendments or alterations thereto.

Power Factor Clause:

The Company reserves the right to require the customer to install adequate equipment so that at all times it can operate its facilities to maintain a power factor between 90% lagging and 90% leading. If the customer operates outside this range, the maximum 15 minute integrated reactive kilovolt amperes in excess of 50% of the maximum 15 minute integrated kilowatt demand for the same month will be billed at \$3.35 per Kvar of such excess demand.

Determination of Billing Demand:

The demand in kilowatts for billing purposes shall be the maximum 15 minute measured demand in the current month. Demands will be determined to the nearest one-tenth kilowatt. Customers whose loads have rapidly fluctuating and/or intermittent demand characteristics shall be subject to special rules and regulations.

Date Filed: October 8, 2018

Effective Date: Service rendered on and after December 1, 2018

Issued By: Tamie A. Aberle
Director - Regulatory Affairs

Case No.: PU-18-89



Montana-Dakota Utilities Co.

A Division of MDU Resources Group, Inc.

400 N 4th Street
Bismarck, ND 58501

State of North Dakota Electric Rate Schedule

NDPSC Volume 4

7th Revised Sheet No. 14.1

Canceling 6th Revised Sheet No. 14.1

IRRIGATION POWER SERVICE Rate 25

Page 2 of 2

Adjustment Clauses:

Bills are subject to the following adjustments or any amendments or alterations thereto:

1. Renewable Resource Cost Adjustment Rate 55
2. Generation Resource Recovery Rider Rate 56
3. Environmental Cost Recovery Rider Rate 57
4. Fuel and Purchased Power Adjustment Rate 58
5. Transmission Cost Adjustment Rate 59

General Terms and Conditions:

The foregoing schedule is subject to Rates 100-112 and any amendments or alterations thereto or additional rules and regulations promulgated by the Company under the laws of the state.

Date Filed: June 26, 2017

Effective Date: Service rendered on and
after August 7, 2017

Issued By: Tamie A. Aberle
Director - Regulatory Affairs

Case No.: PU-16-666



Montana-Dakota Utilities Co.

A Division of MDU Resources Group, Inc.

400 N 4th Street
Bismarck, ND 58501

State of North Dakota Electric Rate Schedule

NDPSC Volume 4
11th Revised Sheet No. 15
Canceling 10th Revised Sheet No. 15

OPTIONAL TIME-OF-DAY SMALL GENERAL ELECTRIC SERVICE Rate 26

Page 1 of 2

Availability:

In all communities served for all types of general electric service with billing demands that do not warrant the installation of a demand meter except outside lighting, standby, resale, or other customers covered by special contracts or rate schedules applicable to specific services. The customer's wiring must be arranged so that all service can be measured through one meter.

Rate:

Basic Service Charge: \$1.00 per day

On-Peak Energy:

For all Kwh's used during peak hours designated as 12 p.m. to 8 p.m. local time, Monday through Friday.

October – May 4.566¢ per Kwh
June – September 6.066¢ per Kwh

Off-Peak Energy:

For all energy not covered by the On-Peak rating period.

October – May 2.066¢ per Kwh
June – September 3.566¢ per Kwh

Minimum Bill:

Basic Service Charge.

Payment:

Bills will be considered past due if not paid by the due date shown on the bill. Past due bills are subject to a late payment charge in accordance with the provisions of Rate 100 or any amendments or alterations thereto.

Date Filed: October 8, 2018

Effective Date: Service rendered on and after December 1, 2018

Issued By: Tamie A. Aberle
Director - Regulatory Affairs

Case No.: PU-18-89



Montana-Dakota Utilities Co.

A Division of MDU Resources Group, Inc.

400 N 4th Street
Bismarck, ND 58501

State of North Dakota Electric Rate Schedule

NDPSC Volume 4

3rd Revised Sheet No. 15.1

Canceling 2nd Revised Sheet No. 15.1

OPTIONAL TIME-OF-DAY SMALL GENERAL ELECTRIC SERVICE Rate 26

Page 2 of 2

Adjustment Clauses:

Bills are subject to the following adjustments or any amendments or alterations thereto:

1. Renewable Resource Cost Adjustment Rate 55
2. Generation Resource Recovery Rider Rate 56
3. Environmental Cost Recovery Rider Rate 57
4. Fuel and Purchased Power Adjustment Rate 58
5. Transmission Cost Adjustment Rate 59

Contract Terms:

Customer agrees to contract for service under the Optional Time-of-Day Small General Electric Service rate for a minimum period of one year. At the end of a one-year period, customer shall have the option of remaining under the Optional Time-of-Day Small General Electric Service rate or returning to the regular Small General Electric Service rate.

General Terms and Conditions:

1. Customers and their architects, contractors and electricians should consult with the Company before proceeding to design or erect installations in which there will be a substantial electric load, to make sure their equipment will meet requirements and receive adequate service.
2. Customer may take service under this rate provided customer's monthly Kwh will not exceed 4,000 Kwh per month for four consecutive months or connected load will not exceed 20 Kw.
3. The foregoing schedule is subject to Rates 100-112 and any amendments or alterations thereto or additional rules and regulations promulgated by the Company under the laws of the state.

Date Filed: November 21, 2016

Effective Date: Service rendered on and after December 13, 2016

Issued By: Tamie A. Aberle
Director – Regulatory Affairs

Case No.: PU-16-666



Montana-Dakota Utilities Co.

A Division of MDU Resources Group, Inc.

400 N 4th Street
Bismarck, ND 58501

State of North Dakota Electric Rate Schedule

NDPSC Volume 4
5th Revised Sheet No. 18
Canceling 4th Revised Sheet No. 18

GENERAL ELECTRIC SERVICE Rate 30

Page 1 of 2

Availability:

In all communities served for all types of demand metered general electric service except outside lighting, standby, resale or other customers covered by special contracts or rate schedules applicable to specific services. The customer's wiring must be arranged so that all service can be measured through one meter. If the customer does not connect his wiring into a single system, each meter shall constitute a separate billing unit.

Rate:

Primary Service:

Basic Service Charge: \$100.00 per month

Demand Charge:

October – May \$11.00 per Kw

June – September \$14.00 per Kw

Energy Charge: 1.414¢ per Kwh

Secondary Service:

Basic Service Charge: \$56.00 per month

Demand Charge:

October – May \$ 9.50 per Kw

June – September \$12.50 per Kw

Energy Charge: 2.331¢ per Kwh

Minimum Bill:

Basic Service Charge.

Payment:

Bills will be considered past due if not paid by the due date shown on the bill. Past due bills are subject to a late payment charge in accordance with the provisions of Rate 100 or any amendments or alterations thereto.

Date Filed: October 8, 2018

Effective Date: Service rendered on and after December 1, 2018

Issued By: Tamie A. Aberle
Director - Regulatory Affairs

Case No.: PU-18-89



Montana-Dakota Utilities Co.

A Division of MDU Resources Group, Inc.

400 N 4th Street
Bismarck, ND 58501

State of North Dakota Electric Rate Schedule

NDPSC Volume 4

7th Revised Sheet No. 18.1

Canceling 6th Revised Sheet No. 18.1

GENERAL ELECTRIC SERVICE Rate 30

Page 2 of 2

Determination of Billing Demand:

The demand in kilowatts for billing purposes shall be the maximum 15 minute measured demand in the current month. Demands will be determined to the nearest one-tenth kilowatt. Customers whose loads have rapidly fluctuating and/or intermittent demand characteristics shall be subject to special rules and regulations.

Power Factor Clause:

The Company reserves the right to require the customer to install adequate equipment so that at all times it can operate its facilities to maintain a power factor between 90% lagging and 90% leading. If the customer operates outside this range, the maximum 15 minute integrated reactive kilovolt amperes in excess of 50% of the maximum 15 minute integrated kilowatt demand for the same month will be billed at \$3.35 per Kvar of such excess demand.

Adjustment Clauses:

Bills are subject to the following adjustments or any amendments or alterations thereto:

1. Renewable Resource Cost Adjustment Rate 55
2. Generation Resource Recovery Rider Rate 56
3. Environmental Cost Recovery Rider Rate 57
4. Fuel and Purchased Power Adjustment Rate 58
5. Transmission Cost Adjustment Rate 59

General Terms and Conditions:

1. Customers or their architects, contractors and electricians should consult with the Company before proceeding to design or erect installations in which there will be a substantial electric load, to make sure their equipment will meet requirements and receive adequate service.
2. Primary service rate is applicable to customers that own their own transformers, related equipment and distribution facilities downstream of the meter, satisfactory to the Company so customer can receive service and be metered at primary voltages of 2,400 volts or greater.
3. The foregoing schedule is subject to Rates 100-112 and any amendments or alterations thereto or additional rules and regulations promulgated by the Company under the laws of the state.

Date Filed: June 26, 2017

Effective Date: Service rendered on and after August 7, 2017

Issued By: Tamie A. Aberle
Director - Regulatory Affairs

Case No.: PU-16-666



Montana-Dakota Utilities Co.

A Division of MDU Resources Group, Inc.

400 N 4th Street
Bismarck, ND 58501

State of North Dakota Electric Rate Schedule

NDPSC Volume 4
1st Revised Sheet No. 18.2
Canceling Original Sheet No. 18.2

Reserved for Future Use

Date Filed: June 26, 2017

Effective Date: Service rendered on and
after August 7, 2017

Issued By: Tamie A. Aberle
Director - Regulatory Affairs

Case No.: PU-16-666



Montana-Dakota Utilities Co.

A Division of MDU Resources Group, Inc.

400 N 4th Street
Bismarck, ND 58501

State of North Dakota Electric Rate Schedule

NDPSC Volume 4
7th Revised Sheet No. 19
Canceling 6th Revised Sheet No. 19

OPTIONAL TIME-OF-DAY GENERAL ELECTRIC SERVICE Rate 31

Page 1 of 3

Availability:

In all communities served for all types of demand metered general electric service except outside lighting, standby, resale, or other customers covered by special contracts or rate schedules applicable to specific services. The customer's wiring must be arranged so that all service can be measured through one meter.

Rate:

Primary Service:

Basic Service Charge: \$97.00 per month

On-Peak Demand:

October - May \$12.25 per Kw

June - September \$15.25 per Kw

On-Peak Energy:

For all Kwh's used during peak hours designated as 12 p.m. to 8 p.m. local time, Monday through Friday. 1.607¢ per Kwh

Off-Peak Energy:

For all energy not covered by the On-Peak rating period. 1.357¢ per Kwh

Secondary Service:

Basic Service Charge: \$72.00 per month

On-Peak Demand:

October – May \$10.75 per Kw

June – September \$14.75 per Kw

Date Filed: October 8, 2018

Effective Date: Service rendered on and after December 1, 2018

Issued By: Tamie A. Aberle
Director - Regulatory Affairs

Case No.: PU-18-89



Montana-Dakota Utilities Co.

A Division of MDU Resources Group, Inc.

400 N 4th Street
Bismarck, ND 58501

State of North Dakota Electric Rate Schedule

NDPSC Volume 4

11th Revised Sheet No. 19.1

Canceling 10th Revised Sheet No. 19.1

OPTIONAL TIME-OF-DAY GENERAL ELECTRIC SERVICE Rate 31

Page 2 of 3

On-Peak Energy:

For all Kwh's used during peak
hours designated as 12 p.m.
to 8 p.m. local time, Monday
through Friday. 2.512¢ per Kwh

Off-Peak Energy:

For all energy not covered by
the On-Peak rating period. 2.262¢ per Kwh

Minimum Bill:

Basic Service Charge.

Payment:

Bills will be considered past due if not paid by the due date shown on the bill.
Past due bills are subject to a late payment charge in accordance with the
provisions of Rate 100 or any amendments or alterations thereto.

Adjustment Clauses:

Bills are subject to the following adjustments or any amendments or alterations
thereto:

1. Renewable Resource Cost Adjustment Rate 55
2. Generation Resource Recovery Rider Rate 56
3. Environmental Cost Recovery Rider Rate 57
4. Fuel and Purchased Power Adjustment Rate 58
5. Transmission Cost Adjustment Rate 59

Determination of On-Peak Billing Demand:

The demand in kilowatts for billing purposes shall be the maximum 15 minute
measured demand for the on-peak period in the current month defined as 12:00
p.m. to 8:00 p.m. local time, Monday through Friday. Demands will be
determined to the nearest one-tenth kilowatt. Customers whose loads have
rapidly fluctuating and/or intermittent demand characteristics shall be subject to
special rules and regulations.

Date Filed: October 8, 2018

Effective Date: Service rendered on and
after December 1, 2018

Issued By: Tamie A. Aberle
Director - Regulatory Affairs

Case No.: PU-18-89



Montana-Dakota Utilities Co.

A Division of MDU Resources Group, Inc.

400 N 4th Street
Bismarck, ND 58501

State of North Dakota Electric Rate Schedule

NDPSC Volume 4

4th Revised Sheet No. 19.2

Canceling 3rd Revised Sheet No. 19.2

OPTIONAL TIME-OF-DAY GENERAL ELECTRIC SERVICE Rate 31

Page 3 of 3

Power Factor Clause:

The Company reserves the right to require the customer to install adequate equipment so that at all times it can operate its facilities to maintain a power factor between 90% lagging and 90% leading. If the customer operates outside this range, the maximum 15 minute integrated reactive kilovolt amperes in excess of 50% of the maximum 15 minute integrated kilowatt demand for the same month will be billed at \$3.35 per Kvar of such excess demand.

Contract Terms:

Customer agrees to contract for service under the Optional Time-of-Day General Electric Service rate for a minimum period of one year. At the end of a one-year period, customer shall have the option of remaining under the Optional Time-of-Day General Electric Service rate or returning to the regular General Electric Service rate.

General Terms and Conditions:

1. Customers and their architects, contractors and electricians should consult with the Company before proceeding to design or erect installations in which there will be a substantial electric load, to make sure their equipment will meet requirements and receive adequate service.
2. Primary service rate is applicable to customers that own their own transformers, related equipment and distribution facilities downstream of the meter, satisfactory to the Company so customer can receive service and be metered at primary voltages of 2,400 volts or greater.
3. The foregoing schedule is subject to Rates 100-112 and any amendments or alterations thereto or additional rules and regulations promulgated by the Company under the laws of the state.

Date Filed: June 26, 2017

Effective Date: Service rendered on and after August 7, 2017

Issued By: Tamie A. Aberle
Director - Regulatory Affairs

Case No.: PU-16-666



Montana-Dakota Utilities Co.

A Division of MDU Resources Group, Inc.

400 N 4th Street
Bismarck, ND 58501

State of North Dakota Electric Rate Schedule

NDPSC Volume 4
6th Revised Sheet No. 20
Canceling 5th Revised Sheet No. 20

GENERAL ELECTRIC SPACE HEATING SERVICE Rate 32

Page 1 of 3

Availability:

In all communities served for space heating service, where the customer also takes service under another general service rate schedule offered by the Company. Space heating equipment, including combination space heating and cooling equipment such as heat pumps and packaged roof-top heating/cooling units where heating use is the principal load may be served under this rate schedule.

Rate:

Basic Service Charge: \$21.00 per month

Primary Service:

Demand Charge:

October – May \$ 1.00 per Kw
June – September \$14.00 per Kw

Energy Charge: 1.422¢ per Kwh

Secondary Service:

Demand Charge:

October – May \$ 1.00 per Kw
June – September \$12.50 per Kw

Energy Charge: 2.422¢ per Kwh

Minimum Bill:

Basic Service Charge.

Payment:

Bills will be considered past due if not paid by the due date shown on the bill. Past due bills are subject to a late payment charge in accordance with the provisions of Rate 100 or any amendments or alterations thereto.

Date Filed: October 8, 2018

Effective Date: Service rendered on and after December 1, 2018

Issued By: Tamie A. Aberle
Director - Regulatory Affairs

Case No.: PU-18-89



Montana-Dakota Utilities Co.

A Division of MDU Resources Group, Inc.

400 N 4th Street
Bismarck, ND 58501

State of North Dakota Electric Rate Schedule

NDPSC Volume 4
9th Revised Sheet No. 20.1
Canceling 8th Revised Sheet No. 20.1

GENERAL ELECTRIC SPACE HEATING SERVICE Rate 32

Page 2 of 3

Determination of Billing Demand:

The demand in kilowatts for billing purposes shall be the maximum 15 minute measured demand in the current month. Demands will be determined to the nearest one-tenth kilowatt. Customers whose loads have rapidly fluctuating and/or intermittent demand characteristics shall be subject to special rules and regulations.

Power Factor Clause:

The Company reserves the right to require the customer to install adequate equipment so that at all times it can operate its facilities to maintain a power factor between 90% lagging and 90% leading. If the customer operates outside this range, the maximum 15 minute integrated reactive kilovolt amperes in excess of 50% of the maximum 15 minute integrated kilowatt demand for the same month will be billed at \$3.35 per Kvar of such excess demand.

Adjustment Clauses:

Bills are subject to the following adjustments or any amendments or alterations thereto:

1. Renewable Resource Cost Adjustment Rate 55
2. Generation Resource Recovery Rider Rate 56
3. Environmental Cost Recovery Rider Rate 57
4. Fuel and Purchased Power Adjustment Rate 58
5. Transmission Cost Adjustment Rate 59

General Terms and Conditions:

1. Customers or their architects, contractors and electricians should consult with the Company before proceeding to design or erect installations in which there will be a substantial electric load, to make sure their equipment will meet requirements and receive adequate service.
2. Primary service rate is applicable to customers that own their own transformers, related equipment and distribution facilities downstream of the meter, satisfactory to the Company so customer can receive service and be metered at primary voltages of 2,400 volts or greater.

Date Filed: June 26, 2017

Effective Date: Service rendered on and after August 7, 2017

Issued By: Tamie A. Aberle
Director - Regulatory Affairs

Case No.: PU-16-666



Montana-Dakota Utilities Co.

A Division of MDU Resources Group, Inc.

400 N 4th Street
Bismarck, ND 58501

State of North Dakota Electric Rate Schedule

NDPSC Volume 4
2nd Revised Sheet No. 20.2
Canceling 1st Revised Sheet No. 20.2

GENERAL ELECTRIC SPACE HEATING SERVICE Rate 32

Page 3 of 3

3. The foregoing schedule is subject to Rates 100-112 and any amendments or alterations thereto or additional rules and regulations promulgated by the Company under the laws of the state.

Date Filed: June 26, 2017

Effective Date: Service rendered on and
after August 7, 2017

Issued By: Tamie A. Aberle
Director - Regulatory Affairs

Case No.: PU-16-666



Montana-Dakota Utilities Co.

A Division of MDU Resources Group, Inc.

400 N 4th Street
Bismarck, ND 58501

State of North Dakota Electric Rate Schedule

NDPSC Volume 4

3rd Revised Sheet No. 22

Canceling 2nd Revised Sheet No. 22

FIRM SERVICE ECONOMIC DEVELOPMENT Rate 34

Page 1 of 3

Availability:

In all communities served for all types of general electric service which meets one of the following qualifications:

1. New Customers - An applicant with total expected demand of 200 Kw per month and usage of 750,000 Kwh per year is eligible for service under this rate if it can meet any one of the following requirements: (i) its activities are largely or entirely different than that of the previous customer; (ii) that non-seasonal business has not been conducted at the premise for at least three billing periods prior to the application; (iii) that seasonal business has not been conducted at the premise for at least thirteen billing periods prior to the application; or (iv) the facility is newly constructed.
2. Existing Customers and Existing In-state Customers of Competing Suppliers - An existing customer, or an existing in-state customer of a competing supplier with increased demand of 200 Kw per month and increased usage of 750,000 Kwh per year is eligible for service under this rate. Only the expanded portion of the facility will be eligible for the negotiated rate. In addition, the new load must be supplied from a separately metered circuit with separate metering equipment to be installed at the customer's expense. Average usage at the original facility must be at least as great as that which occurred in the previous 12 month period.

Rate:

Basic Service Charge: \$100.00 per month

Demand Charge: To Be Negotiated

Energy Charge: Otherwise applicable energy charge for General Service Rate 30.

Contracts shall be filed with and approved by the North Dakota Public Service Commission.

Date Filed: June 26, 2017

Effective Date: Service rendered on and after August 7, 2017

Issued By: Tamie A. Aberle
Director - Regulatory Affairs

Case No.: PU-16-666



Montana-Dakota Utilities Co.

A Division of MDU Resources Group, Inc.

400 N 4th Street
Bismarck, ND 58501

State of North Dakota Electric Rate Schedule

NDPSC Volume 4

6th Revised Sheet No. 22.1

Canceling 5th Revised Sheet No. 22.1

FIRM SERVICE ECONOMIC DEVELOPMENT Rate 34

Page 2 of 3

Minimum Bill:

Basic Service Charge plus Demand Charge.

Payment:

Bills will be considered past due if not paid by the due date shown on the bill. Past due bills are subject to a late payment charge in accordance with the provisions of Rate 100 or any amendments or alterations thereto.

Adjustment Clauses:

Bills are subject to the following adjustments or any amendments or alterations thereto:

1. Renewable Resource Cost Adjustment Rate 55
2. Generation Resource Recovery Rider Rate 56
3. Environmental Cost Recovery Rider Rate 57
4. Fuel and Purchased Power Adjustment Rate 58
5. Transmission Cost Adjustment Rate 59

Right to Discontinue Service:

The Company reserves the right to refuse applicants who have not previously signed a contract for service under this rate if it determines either system capacity or system energy supply is projected to be insufficient, or if service reliability is expected to be at jeopardy.

Determination of Billing Demand:

The demand in kilowatts for billing purposes shall be the greater of the maximum 15 minute measured demand in the current month or 200 Kw. Demands will be determined to the nearest one-tenth kilowatt. Customers whose loads have rapidly fluctuating and/or intermittent demand characteristics shall be subject to special rules and regulations.

Power Factor Clause:

The Company reserves the right to require the customer to install adequate equipment so that at all times it can operate its facilities to maintain a power factor between 90% lagging and 90% leading. If the customer operates outside this range, the maximum 15 minute integrated reactive kilovolt amperes in excess of 50% of the maximum 15 minute integrated kilowatt demand for the same month will be billed at \$3.35 per Kvar of such excess demand.

Date Filed: November 21, 2016

Effective Date: Service rendered on and after December 13, 2016

Issued By: Tamie A. Aberle
Director - Regulatory Affairs

Case No.: PU-16-666



Montana-Dakota Utilities Co.

A Division of MDU Resources Group, Inc.

400 N 4th Street
Bismarck, ND 58501

State of North Dakota Electric Rate Schedule

NDPSC Volume 4

2nd Revised Sheet No. 22.2

Canceling 1st Revised Sheet No. 22.2

FIRM SERVICE ECONOMIC DEVELOPMENT Rate 34

Page 3 of 3

General Terms and Conditions:

1. The customer and the Company shall execute a contract for service to be effective under this rate for a period of five years from the date of service commencement.
2. The negotiated demand charge shall be increased according to the differential between the negotiated rate and the ceiling as portrayed by the following schedule.

<u>Years</u>	<u>Differential Percent Decrease</u>
1-3	0%
4	25%
5	50%

At the end of the fifth year, the negotiated agreement hereunder expires.

3. Upon expiration of the contract, the customer shall be served under the otherwise applicable rate schedule.
4. Customers and their architects, contractors and electricians should consult with the Company before proceeding to design or erect installations in which there will be a substantial electric load, to make sure their equipment will meet requirements and receive adequate service.
5. The foregoing schedule is subject to Rates 100-112 and any amendments or alterations thereto or additional rules and regulations promulgated by the Company under the laws of the state.

Date Filed: October 21, 2015

Effective Date: Service rendered on and after January 7, 2016

Issued By: Tamie A. Aberle
Director – Regulatory Affairs

Case No.: PU-15-703



Montana-Dakota Utilities Co.

A Division of MDU Resources Group, Inc.

400 N 4th Street
Bismarck, ND 58501

State of North Dakota Electric Rate Schedule

NDPSC Volume 4

5th Revised Sheet No. 23

Canceling 4th Revised Sheet No. 23

INTERRUPTIBLE LARGE POWER DEMAND RESPONSE

Rate 38

Page 1 of 4

Availability:

In all communities served for power to customers having a demand of 500 Kw or more for its interruptible load available for interruption for up to 100 hours annually. Electric energy for the interruptible load shall be supplied through a separately metered circuit at the same voltage and phase utilized to serve the balance of the customer's electrical load so arranged to allow remote operation by the Company.

Type of Service:

Service under this rate shall be taken by the customer at whatever primary voltage is available at the point of delivery but not less than 2,400 volts. In the event that it is necessary to build a substation on the Company's transmission line to serve the customer, the cost of building the substation shall be a matter of negotiation between the Company and the customer.

Rate:

Basic Service Charge:	Specified in the electric service agreement with the Company.
Demand Charge:	
October – May	\$ 8.00 per Kw
June – September	\$11.00 per Kw
Energy Charge:	1.252¢ per Kwh

Minimum Bill:

Basic Service Charge plus the Demand Charge (500 Kw minimum).

Payment:

Bills will be considered past due if not paid by the due date shown on the bill. Past due bills are subject to a late payment charge in accordance with the provisions of Rate 100 or any amendments or alterations thereto.

Date Filed: October 8, 2018

Effective Date: Service rendered on and after December 1, 2018

Issued By: Tamie A. Aberle
Director - Regulatory Affairs

Case No.: PU-18-89



Montana-Dakota Utilities Co.

A Division of MDU Resources Group, Inc.

400 N 4th Street
Bismarck, ND 58501

State of North Dakota Electric Rate Schedule

NDPSC Volume 4

7th Revised Sheet No. 23.1

Canceling 6th Revised Sheet No. 23.1

INTERRUPTIBLE LARGE POWER DEMAND RESPONSE

Rate 38

Page 2 of 4

Determination of Billing Demand:

The demand in kilowatts for billing purposes shall be the greater of the maximum 15 minute measured demand in the current month or 500 Kw. Demands will be determined to the nearest one-tenth kilowatt. Customers whose loads have rapidly fluctuating and/or intermittent demand characteristics shall be subject to special rules and regulations.

Power Factor Clause:

The Company reserves the right to require the customer to install adequate equipment so that at all times it can operate its facilities to maintain a power factor between 90% lagging and 90% leading. If the customer operates outside this range, the maximum 15 minute integrated reactive kilovolt amperes in excess of 50% of the maximum 15 minute integrated kilowatt demand for the same month will be billed at \$3.35 per Kvar of such excess demand.

Adjustment Clauses:

Bills are subject to the following adjustments or any amendments or alterations thereto:

1. Renewable Resource Cost Adjustment Rate 55
2. Generation Resource Recovery Rider Rate 56
3. Environmental Cost Recovery Rider Rate 57
4. Fuel and Purchased Power Adjustment Rate 58
5. Transmission Cost Adjustment Rate 59

General Terms and Conditions:

1. The customer shall execute an electric service agreement with the Company which will include, among other provisions, a minimum term of service and monthly Basic Service Charge payments to the Company. The monthly Basic Service Charge payments are determined on a customer by customer basis and shall include, but are not limited to, any additional costs incurred by Company for facilities, such as substations, electric lines, meters, switching devices, and circuit breakers that are necessary to provide service under this rate.

Date Filed: June 26, 2017

Effective Date: Service rendered on and after August 7, 2017

Issued By: Tamie A. Aberle
Director - Regulatory Affairs

Case No.: PU-16-666



Montana-Dakota Utilities Co.

A Division of MDU Resources Group, Inc.

400 N 4th Street
Bismarck, ND 58501

State of North Dakota Electric Rate Schedule

NDPSC Volume 4

5th Revised Sheet No. 23.2

Canceling 4th Revised Sheet No. 23.2

INTERRUPTIBLE LARGE POWER DEMAND RESPONSE

Rate 38

Page 3 of 4

2. All equipment associated with the interruptible load must be of such voltage and electrical characteristics that it can be separately metered and served from the circuit provided for the interruptible portion of the customer's load. If the equipment to be served is such that this is impossible, the customer must either make special arrangements with the Company or furnish the necessary equipment suitable for connection and metering to the circuit for the interruptible portion of the load.
3. The customer must provide a load-break switch or circuit breaker equipped with electrical trip and close circuits allowing for remote operation of the customer's switch or circuit breaker by the Company. Customer must wire the trip and close circuits into a connection point designated by the Company to allow installation of control equipment by the Company. Customer must provide a continuous 120 volt AC power source at the connection point for operation of the Company's control system.
4. The Company may request the customer to interrupt at any time for up to 100 hours during an annual period starting with the in-service date of the contract between the Company and the customer and annually thereafter. Company shall reimburse customer for customer's fuel when interrupted at a mutually acceptable level and price.
5. Customer will be required to interrupt service within 10 minutes of the Company's signal to interrupt service.
6. The penalty for non-performance when the Company requests the customer to interrupt will be the greater of \$10.00 per Kw applicable to the Kw demand specified in the electric service agreement with the Company or the appropriate allocation of any penalties imposed on the Company by the Midwest Reliability Organization for the period of non-performance. After a second failure to perform, within a 12-month period, the customer shall be liable for the penalty and may be moved to the otherwise applicable rate.

Date Filed: June 26, 2017

Effective Date: Service rendered on and after August 7, 2017

Issued By: Tamie A. Aberle
Director - Regulatory Affairs

Case No.: PU-16-666



Montana-Dakota Utilities Co.

A Division of MDU Resources Group, Inc.

400 N 4th Street
Bismarck, ND 58501

State of North Dakota Electric Rate Schedule

NDPSC Volume 4

2nd Revised Sheet No. 23.3

Canceling 1st Revised Sheet No. 23.3

INTERRUPTIBLE LARGE POWER DEMAND RESPONSE Rate 38

Page 4 of 4

7. The Company shall not be liable for any loss or damage caused by or resulting from any interruption of service.

8. The foregoing schedule is subject to Rates 100-112 and any amendments or alterations thereto or additional rules and regulations promulgated by the Company under the laws of the state.

Date Filed: November 21, 2016

Effective Date: Service rendered on and
after December 13, 2016

Issued By: Tamie A. Aberle
Director - Regulatory Affairs

Case No.: PU-16-666



Montana-Dakota Utilities Co.

A Division of MDU Resources Group, Inc.

400 N 4th Street
Bismarck, ND 58501

State of North Dakota Electric Rate Schedule

NDPSC Volume 4
3rd Revised Sheet No. 24
Canceling 2nd Revised Sheet No. 24

Reserved for future use

Date Filed: June 14, 2011

Effective Date: Service rendered on and
after July 22, 2011

Issued By: Tamie A. Aberle
Regulatory Affairs Manager

Case No.: PU-10-124



Montana-Dakota Utilities Co.

A Division of MDU Resources Group, Inc.

400 N 4th Street
Bismarck, ND 58501

State of North Dakota Electric Rate Schedule

NDPSC Volume 4

3rd Revised Sheet No. 24.1

Canceling 2nd Revised Sheet No. 24.1

Reserved for future use

Date Filed: June 14, 2011

Effective Date: Service rendered on and
after July 22, 2011

Issued By: Tamie A. Aberle
Regulatory Affairs Manager

Case No.: PU-10-124



Montana-Dakota Utilities Co.

A Division of MDU Resources Group, Inc.

400 N 4th Street
Bismarck, ND 58501

State of North Dakota Electric Rate Schedule

NDPSC Volume 4

2nd Revised Sheet No. 24.2

Canceling 1st Revised Sheet No. 24.2

Reserved for future use

Date Filed: June 14, 2011

Effective Date: Service rendered on and
after July 22, 2011

Issued By: Tamie A. Aberle
Regulatory Affairs Manager

Case No.: PU-10-124



Montana-Dakota Utilities Co.

A Division of MDU Resources Group, Inc.

400 N 4th Street
Bismarck, ND 58501

State of North Dakota Electric Rate Schedule

NDPSC Volume 4
5th Revised Sheet No. 25
Canceling 4th Revised Sheet No. 25

SMALL MUNICIPAL ELECTRIC SERVICE Rate 40 (CLOSED)

Page 1 of 3

Availability:

For all lighting and power requirements with billing demands of 50 kilowatts or less for public buildings or locations supported by public tax levies, and for which the city is liable for payment, in all municipalities served where the Company is operating under a municipal franchise or permit, and the municipality has a standard contract for operation of a street lighting system and/or a municipal pumping system with the Company.

This rate is restricted to small municipal electric service customers who were served under this rate prior to January 27, 1987. Any new small municipal general electric service customer may take service under another applicable rate.

Rate:

Non-Demand:

Basic Service Charge: \$0.84 per day

Energy Charge:

October – May:

First 750 Kwh per month 3.402¢ per Kwh

Over 750 Kwh per month 2.302¢ per Kwh

June – September: 3.402¢ per Kwh

Demand:

Basic Service Charge: \$1.00 per day

Demand Charge:

October – May:

10 Kw or less No Charge

Over 10 Kw \$ 8.25 per Kw

June – September: \$11.25 per Kw

Energy Charge: 1.302¢ per Kwh

Date Filed: October 8, 2018

Effective Date: Service rendered on and after December 1, 2018

Issued By: Tamie A. Aberle
Director - Regulatory Affairs

Case No.: PU-18-89



Montana-Dakota Utilities Co.

A Division of MDU Resources Group, Inc.

400 N 4th Street
Bismarck, ND 58501

State of North Dakota Electric Rate Schedule

NDPSC Volume 4

8th Revised Sheet No. 25.1

Canceling 7th Revised Sheet No. 25.1

SMALL MUNICIPAL ELECTRIC SERVICE Rate 40 (CLOSED)

Page 2 of 3

Minimum Bill:

Basic Service Charge.

Payment:

Bills will be considered past due if not paid by the due date shown on the bill. Past due bills are subject to a late payment charge in accordance with the provisions of Rate 100 or any amendments or alterations thereto.

Determination of Billing Demand:

The demand in kilowatts for billing purposes shall be the maximum 15 minute measured demand in the current month. Demands will be determined to the nearest one-tenth kilowatt. Customers whose loads have rapidly fluctuating and/or intermittent demand characteristics shall be subject to special rules and regulations.

Power Factor Clause:

The Company reserves the right to require the customer to install adequate equipment so that at all times it can operate its facilities to maintain a power factor between 90% lagging and 90% leading. If the customer operates outside this range, the maximum 15 minute integrated reactive kilovolt amperes in excess of 50% of the maximum 15 minute integrated kilowatt demand for the same month will be billed at \$3.35 per Kvar of such excess demand.

Adjustment Clauses:

Bills are subject to the following adjustments or any amendments or alterations thereto:

1. Renewable Resource Cost Adjustment Rate 55
2. Generation Resource Recovery Rider Rate 56
3. Environmental Cost Recovery Rider Rate 57
4. Fuel and Purchased Power Adjustment Rate 58
5. Transmission Cost Adjustment Rate 59

Date Filed: June 26, 2017

Effective Date: Service rendered on and
after August 7, 2017

Issued By: Tamie A. Aberle
Director - Regulatory Affairs

Case No.: PU-16-666



Montana-Dakota Utilities Co.

A Division of MDU Resources Group, Inc.

400 N 4th Street
Bismarck, ND 58501

State of North Dakota Electric Rate Schedule

NDPSC Volume 4

5th Revised Sheet No. 25.2

Canceling 4th Revised Sheet No. 25.2

SMALL MUNICIPAL ELECTRIC SERVICE Rate 40 (CLOSED)

Page 3 of 3

General Terms and Conditions:

1. Customers or their architects, contractors and electricians should consult with the Company before proceeding to design or erect installations in which there will be a substantial electric load, to make sure their equipment will meet requirements and receive adequate service.
2. Customer may take service under the non-demand rate provided customer's monthly Kwh will not exceed 4,000 Kwh per month for four consecutive months or connected load will not exceed 20 Kw.
3. Customers not qualifying for the non-demand rate shall be served under the demand rate.
4. The foregoing schedule is subject to Rates 100-112 and any amendments or alterations thereto or additional rules and regulations promulgated by the Company under the laws of the state.

Date Filed: June 26, 2017

Effective Date: Service rendered on and
after August 7, 2017

Issued By: Tamie A. Aberle
Director - Regulatory Affairs

Case No.: PU-16-666



Montana-Dakota Utilities Co.

A Division of MDU Resources Group, Inc.

400 N 4th Street
Bismarck, ND 58501

State of North Dakota Electric Rate Schedule

NDPSC Volume 4
8th Revised Sheet No. 26
Canceling 7th Revised Sheet No. 26

MUNICIPAL LIGHTING SERVICE Rate 41

Page 1 of 2

Availability:

For municipal lighting purposes including streets, alleys and other public grounds. Service will be provided all night, every night in the year with a minimum service requirement of 4,000 hours annually and must be covered by written contract.

Rate:

Primary Service:
Energy Charge: 5.096¢ per Kwh

Secondary Service:
Energy Charge: 5.596¢ per Kwh

Discount: For contracts of ten years or more 10%

Kwh shall be computed according to the total rated capacity of lamps in use.

Minimum Bill:

As provided in contract.

Payment:

Bills will be considered past due if not paid by the due date shown on the bill. Past due bills are subject to a late payment charge in accordance with the provisions of Rate 100 or any amendments or alterations thereto.

Adjustment Clauses:

Bills are subject to the following adjustments or any amendments or alterations thereto:

1. Renewable Resource Cost Adjustment Rate 55
2. Generation Resource Recovery Rider Rate 56
3. Environmental Cost Recovery Rider Rate 57
4. Fuel and Purchased Power Adjustment Rate 58
5. Transmission Cost Adjustment Rate 59

Date Filed: October 8, 2018

Effective Date: Service rendered on and after December 1, 2018

Issued By: Tamie A. Aberle
Director - Regulatory Affairs

Case No.: PU-18-89



Montana-Dakota Utilities Co.

A Division of MDU Resources Group, Inc.

400 N 4th Street
Bismarck, ND 58501

State of North Dakota Electric Rate Schedule

NDPSC Volume 4

4th Revised Sheet No. 26.1

Canceling 3rd Revised Sheet No. 26.1

MUNICIPAL LIGHTING SERVICE Rate 41

Page 2 of 2

General Terms and Conditions:

1. The Company will maintain the facilities and change the light bulbs when notified by the municipality that they are burned out except when the facilities are damaged or destroyed by vandalism, malicious mischief by third parties, or willful negligence on the part of employees of the municipality. In case of vandalism, malicious mischief, or willful negligence the Company will charge the municipality for the cost of repair and replacement.
2. Primary service rate is applicable to customers that own their own transformers, related equipment and distribution facilities downstream of the meter, satisfactory to the Company so customer can receive service and be metered at primary voltages of 2,400 volts or greater.
3. In municipally-owned street lighting systems, an additional charge will be made to cover lamp replacements, materials and labor whenever such services are supplied by the Company.
4. When service is not metered, the bill shall be computed on an annual basis, utilizing the minimum service requirement of 4,000 hours annually, and one-twelfth shall be payable each month.
5. The foregoing schedule is subject to Rates 100-112 and any amendments or alterations thereto or additional rules and regulations promulgated by the Company under the laws of the state.

Date Filed: June 26, 2017

Effective Date: Service rendered on and after August 7, 2017

Issued By: Tamie A. Aberle
Director - Regulatory Affairs

Case No.: PU-16-666



Montana-Dakota Utilities Co.

A Division of MDU Resources Group, Inc.

400 N 4th Street
Bismarck, ND 58501

State of North Dakota Electric Rate Schedule

NDPSC Volume 4
5th Revised Sheet No. 32
Canceling 4th Revised Sheet No. 32

MUNICIPAL PUMPING SERVICE Rate 48

Page 1 of 2

Availability:

For municipal pumping purposes provided the municipality uses electricity exclusively for all its pumping requirements and purchases all such electricity from the Company. The municipality must sign a contract for a minimum period of one year.

Rate:

Primary Service:

Basic Service Charge: \$80.00 per month

Demand Charge:

Connected loads of 10 Kw or less will be billed based on connected load. Connected loads in excess of 10 Kw will be billed based upon the greater of the highest 15 minute interval demand as registered upon a demand meter in the current month or 10 Kw.

October – May: \$6.00 per Kw

June – September: \$9.00 per Kw

Energy Charge: 1.798¢ per Kwh

Secondary Service:

Basic Service Charge: \$45.00 per month

Demand Charge:

Connected loads of 10 Kw or less will be billed based on connected load. Connected loads in excess of 10 Kw will be billed based upon the greater of the highest 15 minute interval demand as registered upon a demand meter in the current month or 10 Kw.

October – May: \$6.00 per Kw

June – September: \$9.00 per Kw

Energy Charge: 1.898¢ per Kwh

Discount: For contracts of ten years or more 10%

Date Filed: October 8, 2018

Effective Date: Service rendered on and after December 1, 2018

Issued By: Tamie A. Aberle
Director - Regulatory Affairs

Case No.: PU-18-89



Montana-Dakota Utilities Co.

A Division of MDU Resources Group, Inc.

400 N 4th Street
Bismarck, ND 58501

State of North Dakota Electric Rate Schedule

NDPSC Volume 4
8th Revised Sheet No. 32.1
Canceling 7th Revised Sheet No. 32.1

MUNICIPAL PUMPING SERVICE Rate 48

Page 2 of 2

Minimum Bill:

Basic Service Charge plus Demand Charge.

Payment:

Bills will be considered past due if not paid by the due date shown on the bill. Past due bills are subject to a late payment charge in accordance with the provisions of Rate 100 or any amendments or alterations thereto.

Power Factor Clause:

The Company reserves the right to require the customer to install adequate equipment so that at all times it can operate its facilities to maintain a power factor between 90% lagging and 90% leading. If the customer operates outside this range, the maximum 15 minute integrated reactive kilovolt amperes in excess of 50% of the maximum 15 minute integrated kilowatt demand for the same month will be billed at \$3.35 per Kvar of such excess demand.

Adjustment Clauses:

Bills are subject to the following adjustments or any amendments or alterations thereto:

1. Renewable Resource Cost Adjustment Rate 55
2. Generation Resource Recovery Rider Rate 56
3. Environmental Cost Recovery Rider Rate 57
4. Fuel and Purchased Power Adjustment Rate 58
5. Transmission Cost Adjustment Rate 59

General Terms and Conditions:

1. Primary service rate is applicable to customers that own their own transformers, related equipment and distribution facilities downstream of the meter, satisfactory to the Company so customer can receive service and be metered at primary voltages of 2,400 volts or greater.
2. The foregoing schedule is subject to Rates 100-112 and any amendments or alterations thereto or additional rules and regulations promulgated by the Company under the laws of the state.

Date Filed: June 26, 2017

Effective Date: Service rendered on and after August 7, 2017

Issued By: Tamie A. Aberle
Director - Regulatory Affairs

Case No.: PU-16-666



Montana-Dakota Utilities Co.

A Division of MDU Resources Group, Inc.

400 N 4th Street
Bismarck, ND 58501

State of North Dakota Electric Rate Schedule

NDPSC Volume 4
2nd Revised Sheet No. 32.2
Canceling 1st Revised Sheet No. 32.2

Reserved for Future Use

Date Filed: June 26, 2017

Effective Date: Service rendered on and
after August 7, 2017

Issued By: Tamie A. Aberle
Director - Regulatory Affairs

Case No.: PU-16-666



Montana-Dakota Utilities Co.

A Division of MDU Resources Group, Inc.

400 N 4th Street
Bismarck, ND 58501

State of North Dakota Electric Rate Schedule

NDPSC Volume 4
9th Revised Sheet No. 36
Canceling 8th Revised Sheet No. 36

OUTDOOR LIGHTING SERVICE Rate 52

Page 1 of 2

Availability:

For all outdoor lighting including flood lights, billboard lighting, metallic vapor yard lights, and Christmas lights in all communities served. Lighting equipment may be Company-owned or customer-owned.

Rate:

Primary Service:

Energy Charge: 6.357¢ per Kwh

Secondary Service:

Energy Charge: 6.763¢ per Kwh

Kwh shall be computed according to the total rated capacity of the units in use.

Payment:

Bills will be considered past due if not paid by the due date shown on the bill. Past due bills are subject to a late payment charge in accordance with the provisions of Rate 100 or any amendments or alterations thereto.

Adjustment Clauses:

Bills are subject to the following adjustments or any amendments or alterations thereto:

1. Renewable Resource Cost Adjustment Rate 55
2. Generation Resource Recovery Rider Rate 56
3. Environmental Cost Recovery Rider Rate 57
4. Fuel and Purchased Power Adjustment Rate 58
5. Transmission Cost Adjustment Rate 59

General Terms and Conditions:

1. Applicable to Company-owned Facilities:
 - a. The Company will install, own and operate the flood light(s), and yard light(s) including a suitable reflector, bracket for mounting and automatic device to control operating hours set to operate from dusk to dawn.

Date Filed: October 8, 2018

Effective Date: Service rendered on and after December 1, 2018

Issued By: Tamie A. Aberle
Director - Regulatory Affairs

Case No.: PU-18-89



Montana-Dakota Utilities Co.

A Division of MDU Resources Group, Inc.

400 N 4th Street
Bismarck, ND 58501

State of North Dakota Electric Rate Schedule

NDPSC Volume 4

3rd Revised Sheet No. 36.1

Canceling 2nd Revised Sheet No. 36.1

OUTDOOR LIGHTING SERVICE Rate 52

Page 2 of 2

- b. The light may be mounted on existing poles owned or controlled by the Company. The Company will furnish a 35 foot pole(s) for flood lights and a 30 foot pole(s) for yard light(s) at the customer's request at a separate rental rate if a special setting is required. If the customer chooses, the light may be installed on a pole owned by the customer or other mounting point suitable for installation of the light. The conductors will be extended 100 feet per unit free of charge, but the customer shall pay for the extra cost of extensions of more than 100 feet per unit.
 - c. To the rate stated herein, bulb replacement and ownership costs for the units shall be added. The customer should consult with the Company for such costs.
 - d. The Company will maintain the facilities and change the light bulbs when notified by the customer that they are burned out except when the facilities are damaged or destroyed by vandalism, malicious mischief by third parties, or willful negligence on the part of the customer. In case of vandalism, malicious mischief, or willful negligence, the Company will charge the customer for the cost of repair and replacement.
2. Primary service rate is applicable to customers that own their own transformers, related equipment and distribution facilities downstream of the meter, satisfactory to the Company so customer can receive service and be metered at primary voltages of 2,400 volts or greater.
 3. When service is not metered, the bill shall be computed on an annual basis, utilizing the minimum service requirement of 4,000 hours annually, and one-twelfth shall be payable each month.

Metallic vapor ratings in lumens shall be converted to watts on the basis of the published ratings currently issued by the General Electric Company and the Westinghouse Electric Corporation.

4. The foregoing schedule is subject to Rates 100-112 and any amendments or alterations thereto or additional rules and regulations promulgated by the Company under the laws of the state.

Date Filed: June 26, 2017

Effective Date: Service rendered on and after August 7, 2017

Issued By: Tamie A. Aberle
Director - Regulatory Affairs

Case No.: PU-16-666



Montana-Dakota Utilities Co.

A Division of MDU Resources Group, Inc.

400 N 4th Street
Bismarck, ND 58501

State of North Dakota Electric Rate Schedule

NDPSC Volume 4
1st Revised Sheet No. 36.2
Canceling Original Sheet No. 36.2

Reserved for Future Use

Date Filed: June 26, 2017

Effective Date: Service rendered on and
after August 7, 2017

Issued By: Tamie A. Aberle
Director - Regulatory Affairs

Case No.: PU-16-666



Montana-Dakota Utilities Co.

A Division of MDU Resources Group, Inc.

400 N 4th Street
Bismarck, ND 58501

State of North Dakota Electric Rate Schedule

NDPSC Volume 4
6th Revised Sheet No. 39
Canceling 5th Revised Sheet No. 39

Renewable Resource Cost Adjustment Rate 55

Page 1 of 1

1. Applicability:

This rate schedule represents a Renewable Resource Cost Adjustment (RRCA) and specifies the procedure to be utilized to recover the jurisdictional costs associated with renewable generation resource modifications or additions approved by the Commission, but not recovered through retail rates. Costs to be recovered may include operation and maintenance expenditures, depreciation, taxes, and a current return on the project costs.

2. Renewable Resource Cost Adjustment:

- a. An adjustment per Kwh will be calculated using the projected capital costs and related expenses, along with the forecasted Kwh sales, to determine a North Dakota jurisdictional revenue requirement to be recovered through the RRCA rates. The return component of the revenue requirement calculation will include the return on equity established in the Company's most recent rate case.
- b. The RRCA is applicable to all retail customers for electric energy sold, except those served under special contract, where the contract does not express RRCA applicability, and are allocated amongst the rate classes based on the Company's Demand/Energy Factor No. 3 established in the Company's most recent general rate case.
- c. The RRCA will be adjusted annually (or other period authorized by the Commission) to reflect the Company's most recent projected capital costs and related expenses for projects determined to be recoverable under this schedule.
- d. A true-up will reflect any over or under collection of revenue under the RRCA based on actual expenditures from the preceding twelve month recovery period plus carrying charges or credits accrued at a rate equal to the three-month Treasury Bill rate as published monthly by the Federal Reserve Board.

3. Renewable Resource Cost Adjustment:

Residential & Small General	0.899¢ per Kwh
Large General	0.838¢ per Kwh
Lighting	1.161¢ per Kwh

Date Filed: November 1, 2021

Effective Date: Service rendered on and after February 1, 2022

Issued By: Travis R. Jacobson
Director – Regulatory Affairs

Case No.: PU-21-420



Montana-Dakota Utilities Co.

A Division of MDU Resources Group, Inc.

400 N 4th Street
Bismarck, ND 58501

State of North Dakota Electric Rate Schedule

NDPSC Volume 4
1st Revised Sheet No. 39.1
Canceling Original Sheet No. 39.1

Reserved for Future Use

Date Filed: June 26, 2017

Effective Date: Service rendered on and
after August 7, 2017

Issued By: Tamie A. Aberle
Director – Regulatory Affairs

Case No.: PU-16-666



Montana-Dakota Utilities Co.

A Subsidiary of MDU Resources Group, Inc.

400 N 4th Street
Bismarck, ND 58501

State of North Dakota Electric Rate Schedule

NDPSC Volume 4

5th Revised Sheet No. 40

Canceling Substitute 4th Revised Sheet No. 40

Generation Resource Recovery Rider Rate 56

Page 1 of 2

Applicability:

This rate schedule represents a Generation Resource Recovery Rider (GRRR) and specifies the procedure to be utilized to recover the jurisdictional costs associated with generation resource additions approved by the Commission but not recovered through retail rates and financial incentives for power purchase agreement eligible for recovery under NDCC 49-06-02 subpart 4. Costs to be recovered may include operations and maintenance expenditures, depreciation, taxes, power purchase agreement financial incentives, and a current return on the project costs during construction. Costs being recovered under this tariff are currently not included in the rates established at the time of the Company's last general rate case.

1. Generation Resource Recovery Rider:

- a. The North Dakota jurisdictional GRRR revenue requirement will be allocated to the customer classes based on the Company's Demand Factor No. 2 established in the Company's most recent general rate case. The adjustment applied to the Residential, Small General Service and Lighting Classes will be calculated based on the customer class revenue requirement and the forecasted Kwh for the forecasted period. The adjustment applied to the Large General Service Class will be calculated based on the customer class revenue requirement and the forecasted demand for the forecasted period and expressed as a KW charge. The return component of the revenue requirement calculation will include the authorized return on equity specified in Case No. PU-16-666.
- b. The GRRR is applicable to all retail customers for electric energy sold, except those served under special contract, where the contract does not express GRRR applicability, and are allocated amongst the rate classes based on the applicable demand factor.
- c. The GRRR will be adjusted annually (or other period authorized by the Commission) to reflect the Company's most recent projected capital costs and related expenses for projects determined to be recoverable under this schedule.
- d. A true-up will reflect any over or under collection of revenue under the GRRR based on actual expenditures from the preceding twelve month recovery period plus carrying charges or credits accrued at a rate equal to the three-month Treasury Bill rate as published monthly by the Federal Reserve Board.

Date Filed: August 17, 2021

Effective Date: Service rendered on and after May 1, 2022

Issued By: Travis R. Jacobson
Director – Regulatory Affairs

Case No.: PU-21-373



Montana-Dakota Utilities Co.

A Subsidiary of MDU Resources Group, Inc.

400 N 4th Street
Bismarck, ND 58501

State of North Dakota Electric Rate Schedule

NDPSC Volume 4

8th Revised Sheet No. 40.1

Canceling 7th Revised Sheet No. 40.1

Generation Resource Recovery Rider Rate 56

Page 2 of 2

2. Generation Resource Recovery Rider:

Residential & Small General	0.185¢ per Kwh
Large General	54.680¢ per KW
General Space Heating Rate 32	23.976¢ per KW
Lighting	0.091¢ per Kwh

Date Filed: November 1, 2021

Effective Date: Service rendered on and
after February 1, 2022

Issued By: Travis R. Jacobson
Director – Regulatory Affairs

Case No.: PU-21-421



Montana-Dakota Utilities Co.

A Division of MDU Resources Group, Inc.

400 N 4th Street
Bismarck, ND 58501

State of North Dakota Electric Rate Schedule

NDPSC Volume 4
5th Revised Sheet No. 41
Canceling 4th Revised Sheet No. 41

Environmental Cost Recovery Rider Rate 57

Page 1 of 1

1. **Applicability:**

This rate schedule represents an Environmental Cost Recovery Rider (ECRR) and specifies the procedure to be utilized to recover the jurisdictional costs to be incurred by the Company in complying with federal and state environmental mandates determined to be eligible for recovery under NDCC 49-05-04.2. Costs to be recovered may include capital expenditures, depreciation, taxes, and a current return on the project costs during construction. Costs being recovered under this tariff are currently not included in the rates established at the time of the Company's last general rate case.

2. **Environmental Cost Recovery Rider:**

- a. An adjustment per Kwh will be calculated using the projected capital costs and related expenses, along with the forecasted Kwh sales, to determine a North Dakota jurisdictional revenue requirement to be recovered through the ECRR. The return component of the revenue requirement calculation will be the authorized rate of return from the Company's most recent general rate case.
- b. The ECRR is applicable to all retail customers for electric energy sold, except those served under special contracts, and are allocated amongst the rate classes based on the Company's Demand Factor No. 2 established in the Company's most recent general rate case.
- c. The ECRR will be adjusted annually (or other period authorized by the Commission) to reflect the Company's most recent projected capital costs and related expenses for projects determined to be eligible under NDCC 49-05-04.2.
- d. A true-up will reflect any over or under collection of revenue under the ECRR based on actual expenditures from the preceding twelve month recovery period plus carrying charges or credits accrued at a rate equal to the three-month Treasury Bill rate as published monthly by the Federal Reserve Board.

3. **Environmental Cost Recovery Rider:**

Residential and Small General	0.000¢ per Kwh
Large General	0.000¢ per Kwh
Lighting	0.000¢ per Kwh

Date Filed: October 8, 2018

Effective Date: Service rendered on and after December 1, 2018

Issued By: Tamie A. Aberle
Director - Regulatory Affairs

Case No.: PU-18-89



Montana-Dakota Utilities Co.

A Division of MDU Resources Group, Inc.

400 N 4th Street
Bismarck, ND 58501

State of North Dakota Electric Rate Schedule

NDPSC Volume 4
5th Revised Sheet No. 41.1
Canceling 4th Revised Sheet No. 41.1

Reserved for Future Use

Date Filed: June 26, 2017

Effective Date: Service rendered on and
after August 7, 2017

Issued By: Tamie A. Aberle
Director - Regulatory Affairs

Case No.: PU-16-666



Montana-Dakota Utilities Co.

A Division of MDU Resources Group, Inc.

400 N 4th Street
Bismarck, ND 58501

State of North Dakota Electric Rate Schedule

NDPSC Volume 4

6th Revised Sheet No. 42

Canceling 5th Revised Sheet No. 42

FUEL AND PURCHASED POWER ADJUSTMENT Rate 58

Page 1 of 3

1. Applicability:

This rate schedule sets forth the procedure to be used in calculating the Fuel and Purchased Power Adjustment (FPPA). It specifies the procedure to be utilized to adjust the rates for electricity sold under Montana-Dakota's rate schedules in order to reflect: (a) changes in Montana-Dakota's average cost of fuel and purchased power as allocated to North Dakota; and (b) amortization of the Deferred Fuel Cost Account.

2. Effective Date and Limitation on Adjustments:

- a. Unless otherwise ordered by the Commission, the effective dates of the Fuel and Purchased Power Adjustment shall be service rendered on and after the first day of each month. The effective date of the adjustment for amortization of the Deferred Fuel Cost Account shall be April 1 of each year.
- b. Montana-Dakota shall file an adjustment to reflect changes in its average cost of electric supply only when the amount of change in such adjustment is at least .001 cents per Kwh. The adjustment to be effective April 1 shall be filed each year, regardless of the amount of the change.

3. Fuel and Purchased Power Adjustment:

- a. The monthly Fuel and Purchased Power Adjustment shall be calculated separately for primary service and secondary service customers and shall reflect Montana-Dakota's cost of fuel and purchased power plus the annual Surcharge Adjustment.
- b. The cost of fuel and purchased power shall be calculated separately for primary service customers and secondary service customers, and shall be the sum of the following costs for the most recent four month period, as allocated to North Dakota and to the primary and secondary customer classes:
 1. The cost of fossil and other fuels and reagents, including sand, recorded in Account Nos. 501, 502 and 547.

Date Filed: July 14, 2017

Effective Date: Service rendered on and after August 7, 2017

Issued By: Tamie A. Aberle
Director- Regulatory Affairs

Case No.: PU-16-666



Montana-Dakota Utilities Co.

A Division of MDU Resources Group, Inc.

400 N 4th Street
Bismarck, ND 58501

State of North Dakota Electric Rate Schedule

NDPSC Volume 4

5th Revised Sheet No. 42.1

Canceling 4th Revised Sheet No. 42.1

FUEL AND PURCHASED POWER ADJUSTMENT Rate 58

Page 2 of 3

2. Natural gas and pipeline reservation charges recorded in Account No. 547
 3. The net cost of purchases and costs linked to the utility's load serving obligation associated with participation in the wholesale electric energy markets as recorded in Account No. 555
 4. Capacity purchases as recorded in Account No. 555.
 5. Regional Market Administration expenses recorded in Account No. 575.
 6. Less 100 percent of the wholesale sales revenue.
 7. Less the revenue from the sales of Renewable Energy Credits (RECs).
- c. The cost per Kwh for the month is the sum of 3(b) above divided by retail sales volumes for the most recent four month period for the primary and secondary service classes.

4. Surcharge Adjustment:

All sales rate schedules shall be subject to a Surcharge Adjustment to be effective on April 1 each year. The Surcharge Adjustment per Kwh sold shall reflect the amortization of the applicable balance in the Deferred Fuel Cost Account calculated by dividing the applicable balance by the estimated Kwh sales for the twelve months following the effective date of the adjustment.

- a. The balance in the Deferred Fuel Cost Account (Account 182.3) includes:
1. The current month over or under recovery, determined as follows:
 - i. Montana-Dakota shall determine each month the cost for that month's fuel and purchased power.
 - ii. Montana-Dakota shall subtract from the month's cost determined in 4.a.1.i the revenue collected under the Fuel and Purchased Power Adjustment for that month.

Date Filed: July 14, 2017

Effective Date: Service rendered on and after August 7, 2017

Issued By: Tamie A. Aberle
Director- Regulatory Affairs

Case No.: PU-16-666



Montana-Dakota Utilities Co.

A Division of MDU Resources Group, Inc.

400 N 4th Street
Bismarck, ND 58501

State of North Dakota Electric Rate Schedule

NDPSC Volume 4

63rd Revised Sheet No. 42.2

Canceling 62nd Revised Sheet No. 42.2

FUEL AND PURCHASED POWER ADJUSTMENT Rate 58

Page 3 of 3

iii. The resulting difference (positive or negative) shall be included separately for primary and secondary service classes.

2. Refunds from supplier(s) and market operators with respect to fuel and purchased power costs.

3. Carrying charges or credits at a rate equal to the three-month Treasury Bill rate as published monthly by the Federal Reserve Board.

5. Manner of Filing:

The Company shall file a monthly statement showing the calculation of the Fuel and Purchased Power Adjustment with the Commission prior to implementing the monthly adjustment. The adjustment in rates shall be effective with service rendered on and after the first day of each month, unless the Commission shall otherwise order.

6. Fuel and Purchased Power Adjustment:

The current and historical Fuel and Purchased Power Adjustment for primary and secondary service customers can be found at www.montana-dakota.com/rates-and-services.

Date Filed: July 14, 2017

Effective Date: Service rendered on and after August 7, 2017

Issued By: Tamie A. Aberle
Director- Regulatory Affairs

Case No.: PU-16-666



Montana-Dakota Utilities Co.

A Division of MDU Resources Group, Inc.

400 N 4th Street
Bismarck, ND 58501

State of North Dakota Electric Rate Schedule

NDPSC Volume 4
13th Revised Sheet No. 42.3
Canceling 12th Revised Sheet No. 42.3

Reserved for future use

Date Filed: July 16, 2012

Effective Date: Service rendered on and
after August 1, 2012

Issued By: Tamie A. Aberle
Regulatory Affairs Manager

Case No.: PU-12-011



Montana-Dakota Utilities Co.

A Subsidiary of MDU Resources Group, Inc.

400 N 4th Street
Bismarck, ND 58501

State of North Dakota Electric Rate Schedule

NDPSC Volume 4

Substitute 1st Revised Sheet No. 43

Canceling Original Sheet No. 43

TRANSMISSION COST ADJUSTMENT Rate 59

Page 1 of 2

1. Applicability:

This rate schedule represents a Transmission Cost Adjustment (TCA) and specifies the procedure to be utilized to recover the net balance of the capital and operating costs and revenue credits of Montana-Dakota's transmission related expenses and revenues determined to be eligible for recovery in accordance with 49-05-04.3 NDCC. Costs to be recovered under the Transmission Adjustment shall include new or modified transmission facilities such as transmission lines and other transmission related equipment such as substations, transformers and other equipment constructed to improve the power delivery capability or reliability of the transmission system as well as federally regulated costs charged to or incurred by the Company to increase regional transmission capacity or reliability that are not reflected in the rates established in the most recent general rate case.

2. Transmission Cost Adjustment:

- a. An adjustment per Kwh will be determined based on the cumulative transmission related costs and revenue credits eligible for recovery and as allocated to the North Dakota jurisdiction and the projected Kwh sales for the recovery period. The adjustment will also include a return requirement on the capital investments based on the authorized rate of return and a true-up of the previous year's adjustment, as described in 2(d).
- b. The adjustment will be applicable to all retail customers for electric energy sold, except those served under special contract, where the contract does not express TCA applicability, and allocated among the rate classes based on the transmission allocation factor from Montana-Dakota's most recent North Dakota general rate case.
- c. The adjustment per Kwh will be revised annually to reflect the current level of costs to be recovered.

Date Filed: November 20, 2018

Effective Date: Service rendered on and after March 1, 2019

Issued By: Tamie A. Aberle
Director – Regulatory Affairs

Case No.: PU-18-379



Montana-Dakota Utilities Co.

A Subsidiary of MDU Resources Group, Inc.

400 N 4th Street
Bismarck, ND 58501

State of North Dakota Electric Rate Schedule

NDPSC Volume 4
10th Revised Sheet No. 43.1
9th Revised Sheet No. 43.1

TRANSMISSION COST ADJUSTMENT Rate 59

Page 2 of 2

- d. The true-up will reflect any over or under collection of revenue under the Transmission Adjustment from the preceding twelve month period plus carrying charges or credits accrued at a rate equal to the three-month Treasury Bill rate as published monthly by the Federal Reserve Board.
- 3. Transmission Cost Adjustment Rate by class:**

Residential & Small General	0.801¢ per Kwh
Large General	0.636¢ per Kwh
Lighting	0.360¢ per Kwh

Date Filed: July 15, 2021

Effective Date: Service rendered on and after November 1, 2021

Issued By: Travis R. Jacobson
Director - Regulatory Affairs

Case No.: PU-21-335



Montana-Dakota Utilities Co.

A Subsidiary of MDU Resources Group, Inc.

400 N 4th Street
Bismarck, ND 58501

State of North Dakota Electric Rate Schedule

NDPSC Volume 4

22nd Revised Sheet No. 44

Canceling 21st Revised Sheet No. 44

OCCASIONAL POWER PURCHASE Rate 95 NON-TIME DIFFERENTIATED

Page 1 of 2

Availability:

To any qualifying cogeneration and small power production facilities for the purpose of generating occasional electric energy in parallel with the Company's system. This schedule is applicable to cogeneration and small power production facilities with a design capacity of 100 Kw or less, that are Qualifying Facilities (QF) as defined under 18 CFR, Part 292.

Rate:

Metering charge for single phase service: \$0.05 per day
With instrument transformers: \$0.19 per day

Metering charge for three phase service: \$0.12 per day
With instrument transformers: \$0.33 per day

Energy delivered to and accepted by Company by a QF shall be paid for by Company in accordance with one of the following two options, elected by the QF:

1. Simultaneous Purchase and Sale:

Energy sales to QF - Service provided to such customers by the Company shall be billed at the appropriate rate, by class of customers (i.e., residential, small and general electric service, etc.) that is currently on file with the Commission.

Energy purchases by Company:

Energy Payment = 2.145¢ per Kwh

2. Net Billing:

Energy generated will be compensated on a net billing basis. The Company will install a meter to measure the energy generated by the QF. The Company will also install a meter to measure the energy consumed by the QF. Metered generation will be subtracted from the metered consumption for the billing period.

Date Filed: October 13, 2021

Effective Date: Service rendered on and after January 1, 2022

Issued By: Travis R. Jacobson
Director of Regulatory Affairs

Case No.: PU-21-404



Montana-Dakota Utilities Co.

A Subsidiary of MDU Resources Group, Inc.

400 N 4th Street
Bismarck, ND 58501

State of North Dakota Electric Rate Schedule

NDPSC Volume 4

18th Revised Sheet No. 44.1

Canceling 17th Revised Sheet No. 44.1

OCCASIONAL POWER PURCHASE Rate 95 NON-TIME DIFFERENTIATED

Page 2 of 2

If metered generation is less than metered consumption, the QF will be billed the applicable retail rate. If metered generation is greater than the metered consumption, the QF will be paid for each Kwh at an amount equal to:

2.145¢ per Kwh

General Terms and Conditions:

1. Change of Rates: This schedule shall be reviewed annually, updated if necessary, and revised upon the Commission's approval.
2. The Company shall install appropriate metering facilities to record all flows of energy necessary to bill and pay in accordance with the charges and payments contained in this rate schedule.
3. The customer shall, with prior written consent of the Company, furnish, install and wire the necessary service entrance equipment, meter sockets, meter enclosure cabinets, or meter connection cabinets that may be required by the Company to properly meter usage and sales to the Company.
4. A written contract with the Company shall be signed stipulating the terms and conditions of the interconnection and sale of the electricity to the Company. The term of the contract hereunder shall be at least one year but less than five years.
5. In order to qualify for the net billing option, the generating equipment and the load of the facility must be located at the same "physical site". "Physical site" shall mean on the same tract of land and the generator output must be physically connected to the load service entrance.
6. For general terms and conditions covering QF's, see Rate 140.
7. All services provided by the Company under this and all other schedules are governed by the rules and regulations approved by the North Dakota Public Service Commission. Rates charged hereunder may be modified by Company at any time by making a unilateral rate application with the North Dakota Public Service Commission or its successor. The new rates shall be effective upon approval by the Commission.

Date Filed: October 13, 2021

Effective Date: Service rendered on and
after January 1, 2022

Issued By: Travis R. Jacobson
Director of Regulatory Affairs

Case No.: PU-21-404



Montana-Dakota Utilities Co.

A Division of MDU Resources Group, Inc.

400 N 4th Street
Bismarck, ND 58501

State of North Dakota Electric Rate Schedule

NDPSC Volume 4
1st Revised Sheet No. 44.2
Canceling Original Sheet No. 44.2

Reserved for future use

Date Filed: June 13, 2011

Effective Date: Service rendered on and
after July 22, 2011

Issued By: Tamie A. Aberle
Regulatory Affairs Manager

Case No.: PU-11-234



Montana-Dakota Utilities Co.

A Subsidiary of MDU Resources Group, Inc.

400 N 4th Street
Bismarck, ND 58501

State of North Dakota Electric Rate Schedule

NDPSC Volume 4

22nd Revised Sheet No. 45

Canceling 21st Revised Sheet No. 45

PARALLEL GENERATION PEAKING FACILITY PURCHASE Rate 96 TIME DIFFERENTIATED

Page 1 of 3

Availability:

To any qualifying cogeneration and small power production facilities for the purpose of generating electric energy in parallel with the Company's system. This schedule is applicable to cogeneration and small power production facilities with a design capacity of 1000 Kw or less, that operate as a peaking facility (defined below), and are Qualifying Facilities (QF) as defined under 18 CFR, Part 292.

Rate:

Metering charge for single phase service: \$ 0.16 per day
With instrument transformers: \$ 0.30 per day

Metering charge for three phase service: \$ 0.18 per day
With instrument transformers: \$ 0.38 per day

1. Capacity delivered to the Company:

Monthly capacity payments for a QF (not registered as a MISO generator) shall be assigned by Montana-Dakota based upon the amount of qualifying capacity assigned to an eligible resource under BPM-011 Resource Adequacy of the MISO tariff subject to adjustment annually in accordance with BPM-011.

Monthly capacity payments for a MISO-registered QF shall be based on the capacity credits assigned by MISO on an annual basis.

Monthly capacity payment shall be the MISO capacity auction clearing price for Zone 1. The capacity payment is subject to change annually through the year 2030. Effective in 2031 the monthly capacity payment shall be \$9.655 per Kw applicable for the remainder of the term of the contact.

Capacity payments will be paid in the subsequent billing period.

Date Filed: October 13, 2021

Effective Date: Service rendered on and after January 1, 2022

Issued By: Travis R. Jacobson
Director – Regulatory Affairs

Case No.: PU-21-404



Montana-Dakota Utilities Co.

A Subsidiary of MDU Resources Group, Inc.

400 N 4th Street
Bismarck, ND 58501

State of North Dakota Electric Rate Schedule

NDPSC Volume 4
20th Revised Sheet No. 45.1
Canceling 19th Revised Sheet No. 45.1

PARALLEL GENERATION PEAKING FACILITY PURCHASE Rate 96 TIME DIFFERENTIATED

Page 2 of 3

2. Energy Payment:

ON-PEAK
2.072¢ per Kwh

OFF-PEAK
2.139¢ per Kwh

Peak Periods: The On-Peak Period is defined as those hours between 12 p.m. and 8 p.m. local time, Monday through Friday in the months of June through September. The Off-Peak Period is defined as all other hours. Definitions of On-Peak and Off-Peak periods are subject to change with change in the Company's system operating characteristics.

Energy Sales to Qualifying Facilities:

Service provided to such customers by the Company shall be billed at the appropriate rate, by class of customers (i.e., residential, small and general electric service, etc.) that is currently on file with the Commission.

General Terms and Conditions:

1. Change of Rates: This schedule shall be reviewed annually, updated if necessary, and revised upon the Commission's approval.
2. Service under this schedule shall be on a simultaneous purchase and sale basis only.
3. The Company shall install appropriate metering facilities to record all flows of energy necessary to bill and pay in accordance with the charges and payments contained in this rate schedule.
4. The customer shall, with prior written consent of the Company, furnish, install and wire the necessary service entrance equipment, meter sockets, meter enclosure cabinets, or meter connection cabinets that may be required by the Company to properly meter usage and sales to the Company.
5. A written contract with the Company shall be signed stipulating the terms and conditions of the interconnection and sale of the electricity to the Company. The term of the contract hereunder shall be five years or more.

Date Filed: October 13, 2021

Effective Date: Service rendered on and after January 1, 2022

Issued By: Travis R. Jacobson
Director – Regulatory Affairs

Case No.: PU-21-404



Montana-Dakota Utilities Co.

A Division of MDU Resources Group, Inc.

400 N 4th Street
Bismarck, ND 58501

State of North Dakota Electric Rate Schedule

NDPSC Volume 4

10th Revised Sheet No. 45.2

Canceling 9th Revised Sheet No. 45.2

PARALLEL GENERATION PEAKING FACILITY PURCHASE Rate 96 TIME DIFFERENTIATED

Page 3 of 3

6. Line loss considerations will be determined on a site specific basis.
7. For dispatchable units, generator outages must be pre-scheduled with Company to provide coordination with Company units.
8. A Peaking Unit is a unit not designed for continuous operation and is capable of supplying capacity and energy during periods of peak electric consumption. Generally, peaking units have a capacity factor of 20% or less.
9. For general terms and conditions covering QF's, see Rate 140.
10. All services provided by the Company under this and all other schedules are governed by the rules and regulations approved by the North Dakota Public Service Commission. Rates charged hereunder may be modified by Company at any time by making a unilateral rate application with the North Dakota Public Service Commission or its successor. The new rates shall be effective upon approval by the Commission.

Date Filed: June 18, 2013

Effective Date: Service rendered on and
after August 1, 2013

Issued By: Tamie A. Aberle
Director – Regulatory Affairs

Case No.: PU-13-382



Montana-Dakota Utilities Co.

A Division of MDU Resources Group, Inc.

400 N 4th Street
Bismarck, ND 58501

State of North Dakota Electric Rate Schedule

NDPSC Volume 4
3rd Revised Sheet No. 45.3
Canceling 2nd Revised Sheet No. 45.3

RESERVED FOR FUTURE USE

Date Filed: June 18, 2013

Effective Date: Service rendered on and
after August 1, 2013

Issued By: Tamie A. Aberle
Director – Regulatory Affairs

Case No.: PU-13-382



Montana-Dakota Utilities Co.

A Division of MDU Resources Group, Inc.

400 N 4th Street
Bismarck, ND 58501

State of North Dakota Electric Rate Schedule

NDPSC Volume 4
2nd Revised Sheet No. 49
Cancelling 1st Revised Sheet No. 49

TABLE OF CONTENTS GENERAL PROVISIONS Rate 100

Page 1 of 9

<u>Title</u>	<u>Page No.</u>
I. Purpose	2
II. Definitions	2
III. General Terms and Conditions	3
1. Rules for Application of Electric Service	3-4
2. Consumer Deposits	4-5
3. Late Payment Charge	5
4. Returned Check Charge	5
5. Tax Clause	5-6
6. Utility Services Performed After Normal Business Hours	6
7. Reconnection Fee for Seasonal Customers	6
8. Discontinuance of Service for Nonpayment of Bill	6-7
9. Discontinuance of Service for Causes Other Than Nonpayment of Bills	7-8
10. Bill Discount for Qualifying Employees	8
11. Method of Computing Initial or Final Bills for Electric Service for Less Than a Full Monthly Billing Period	8
12. Selective Testing Plan for Meters	8
13. Billing Adjustments	9
14. Modification of Rates, Rules and Regulations	9

Date Filed: June 26, 2017

Effective Date: Service rendered on and
after August 7, 2017

Issued By: Tamie A. Aberle
Director of Regulatory Affairs

Case No.: PU-16-666



Montana-Dakota Utilities Co.

A Division of MDU Resources Group, Inc.

400 N 4th Street
Bismarck, ND 58501

State of North Dakota Electric Rate Schedule

NDPSC Volume 4
1st Revised Sheet No. 49.1
Cancelling Original Sheet No. 49.1

GENERAL PROVISIONS Rate 100

Page 2 of 9

I. PURPOSE:

These rules are intended to define good practice which can normally be expected, but are not intended to exclude other accepted standards and practices not covered herein. They are intended to ensure adequate service to the public and protect the Company from unreasonable demands.

The Company undertakes to furnish service subject to the rules and regulations of the Public Service Commission of North Dakota (Commission) and as supplemented by these general provisions, as now in effect or as may hereafter be lawfully established, and in accepting service from the Company, each customer agrees to comply with and be bound by said rules and regulations and the applicable rate schedules. Also refer to Electric Service Rules & Regulations Rate 110.

II. DEFINITIONS:

The following terms used in this tariff shall have the following meanings, unless otherwise indicated:

APPLICANT – A customer requesting Company to provide service.

COMMISSION – Public Service Commission of the State of North Dakota.

COMPANY – Montana-Dakota Utilities Co.

CUSTOMER – Any individual, partnership, corporation, firm or other organization, or government agency supplied with service by Company at one location and at one point of delivery unless otherwise expressly in these rules or in a rate schedule.

RATE – Shall mean and include every compensation, charge, fare, toll, rental, and classification, or any of them, demanded, observed, charged or collected by the Company for any service, product, or commodity, offered by the Company to the public, and any rules, regulations, practices or contracts affecting any such compensation, charge, fare, toll, rental or classification.

Date Filed: June 14, 2011

Effective Date: Service rendered on and after July 22, 2011

Issued By: Tamie A. Aberle
Director of Regulatory Affairs

Case No.: PU-10-124



Montana-Dakota Utilities Co.

A Division of MDU Resources Group, Inc.

400 N 4th Street
Bismarck, ND 58501

State of North Dakota Electric Rate Schedule

NDPSC Volume 4
Original Sheet No. 49.2

GENERAL PROVISIONS Rate 100

Page 3 of 9

III. GENERAL TERMS AND CONDITIONS:

1. RULES FOR APPLICATION OF ELECTRIC SERVICE:

- i. Residential Electric Service is available to any residential customer for domestic purposes only. All normal sized equipment used for domestic lighting, heating, cooking and power, and used strictly for household purposes, may be supplied through one meter.
 - a. Residential service is defined as service for domestic general household purposes in space occupied as living quarters, designed for occupancy by one family. Typical service would include the following: separately metered units, such as single private residences, single apartments, mobile homes and sorority and fraternity houses (this is not an all-inclusive list). In addition, auxiliary buildings on the same premise as the living quarters, used for residential purposes, may be served on the residential rate. Where premise is defined as a contiguous parcel of land undivided by a dedicated street, alley, highway, or other public thoroughfare or railway.
 - b. Motors and other equipment which interfere with service to neighboring customers, all motors larger than 5 horsepower and temporary or seasonal loads totaling more than 25 kilowatts (Kw) will not be permitted on the Residential Electric Service Rate without prior Company approval.
 - c. Only single phase service is available under the Residential Electric Service Rate.
- ii. Three phase service shall be served under the appropriate General Electric Service Rate.
- iii. General Electric Service is defined as service provided to non-residential services, such as a business enterprise in space

Date Filed: June 14, 2011

Effective Date: Service rendered on and after July 22, 2011

Issued By: Tamie A. Aberle
Director of Regulatory Affairs

Case No.: PU-10-124



Montana-Dakota Utilities Co.

A Division of MDU Resources Group, Inc.

400 N 4th Street
Bismarck, ND 58501

State of North Dakota Electric Rate Schedule

NDPSC Volume 4
Original Sheet No. 49.3

GENERAL PROVISIONS Rate 100

Page 4 of 9

occupied and operated for nonresidential purposes. Typical service would include stores, offices, shops, restaurants, boarding houses, hotels, service garages, wholesale houses, filling stations, barber shops, beauty parlors, apartment houses with master metering exemptions, common areas of shopping malls or apartments (such as halls or basements), churches, elevators, schools and facilities located away from the home site (this is not an all-inclusive list).

- iv. If separate metering is not practical for a single unit (one premise) that is using electricity for both domestic purposes and for conducting business (or for nonresidential purposes), the customer will be billed under the predominate use policy. Under this policy, the customer's combined service is billed under the rate (Residential or General Electric Service) applicable to the type of service which constitutes 50% or more of the total connected load.
- v. Other classes of service furnished by the Company shall be defined in applicable rate schedules or in rules and regulations pertaining thereto. Service to customers for which no specific rate schedule is applicable shall be billed on the appropriate General Electric Service Rate.

2. CONSUMER DEPOSITS:

The Company will determine whether or not a deposit shall be required of an applicant for electric service in accordance with Commission rules.

- i. The amount of such deposit shall not exceed an estimated 60 day service bill.
- ii. The Company may accept in lieu of a cash deposit a contract signed by a guarantor, satisfactory to the Company, whereby the payment of a specified sum not to exceed the required cash deposit is guaranteed. The term of such contract shall be indeterminate, but it shall automatically terminate when the customer gives notice of service discontinuance to the Company or a change in location covered by the guarantee agreement or 30

Date Filed: June 14, 2011

Effective Date: Service rendered on and
after July 22, 2011

Issued By: Tamie A. Aberle
Director of Regulatory Affairs

Case No.: PU-10-124



Montana-Dakota Utilities Co.

A Subsidiary of MDU Resources Group, Inc.

400 N 4th Street
Bismarck, ND 58501

State of North Dakota Electric Rate Schedule

NDPSC Volume 4

2nd Revised Sheet No. 49.4

Canceling 1st Revised Sheet No. 49.4

GENERAL PROVISIONS Rate 100

Page 5 of 9

days after written request for termination is made to the utility by the guarantor. However, no agreement shall be terminated without the customer having made satisfactory settlement for any balance which the customer owes the Company. Upon termination of a guarantee contract, a new contract or a cash deposit may be required by the Company.

iii. A deposit shall earn interest at the rate paid by the Bank of North Dakota on a six-month certificate of deposit as of the first business day of each year. Interest shall be credited to the customer's account annually during the month of December.

iv. Deposits shall be refunded to customers at termination provided all billings for service have been paid. Deposits will be refunded to all active customers, after the deposit has been held for 12 months, provided a prompt payment record has been established.

3. LATE PAYMENT CHARGE:

Bills will be considered past due if not paid by the due date shown on the bill. An amount equal to 1% per month will be applied to any past due balance.

4. RETURNED CHECK CHARGE:

A charge of \$15.00 will be collected by the Company for each check charged back to the Company by a bank.

5. TAX CLAUSE:

In addition to the charges provided for in the electric tariffs of the Company, there shall be charged pro rata amounts which, on an annual basis, shall be sufficient to yield to the Company the full amount of any sales, use or excise taxes, whether they be denominated as license taxes, occupation taxes, business taxes, privilege taxes, or otherwise, levied against or imposed upon the Company by any municipality, political subdivision, or other entity, for the privilege of conducting its utility operations therein.

Date Filed: January 15, 2019

Effective Date: Service rendered on and after March 1, 2019

Issued By: Tamie A. Aberle
Director of Regulatory Affairs

Case No.: PU-19-037



Montana-Dakota Utilities Co.

A Division of MDU Resources Group, Inc.

400 N 4th Street
Bismarck, ND 58501

State of North Dakota Electric Rate Schedule

NDPSC Volume 4
1st Revised Sheet No. 49.5
Canceling Original Sheet No. 49.5

GENERAL PROVISIONS Rate 100

Page 6 of 9

The charges to be added to the customer's service bills under this clause shall be limited to the customers within the corporate limits of the municipality, political subdivision or other entity imposing the tax.

6. UTILITY SERVICES PERFORMED AFTER NORMAL BUSINESS HOURS:

For service requested by customers after the Company's normal business hours and on Saturday, Sunday, or legal holidays, a charge will be made for labor at standard overtime service rates and materials at retail prices.

Customers requesting service after the Company's normal business hours will be informed of the after hour service rate and encouraged to have the service performed during normal business hours.

7. RECONNECTION FEE FOR SEASONAL CUSTOMERS:

A charge will be collected for reconnecting electric service to a customer who requests reconnection of service, at a location where the same customer discontinued the same service during the preceding twelve-month period.

Applicable Charge:

- i. Customers with non-demand meters: \$20.00
- ii. Customers with demand meters: \$40.00

8. DISCONTINUANCE OF SERVICE FOR NONPAYMENT OF BILL:

i. Pursuant to North Dakota Administrative Rules 69-09-02-05.1(1), the Company may disconnect service if the customer is delinquent in payment for service, and fails to pay for service or enter into a satisfactory installment agreement with the Company for payment within ten (10) days of the Company giving the customer written notice of the Company's intention to discontinue service on account of payment delinquency.

ii. All bills for service are due when rendered and will be considered delinquent if not paid by the due date shown on the bill. If any

Date Filed: June 26, 2017

Effective Date: Service rendered on and after August 7, 2017

Issued By: Tamie A. Aberle
Director of Regulatory Affairs

Case No.: PU-16-666



Montana-Dakota Utilities Co.

A Division of MDU Resources Group, Inc.

400 N 4th Street
Bismarck, ND 58501

State of North Dakota Electric Rate Schedule

NDPSC Volume 4
1st Revised Sheet No. 49.6
Canceling Original Sheet No. 49.6

GENERAL PROVISIONS Rate 100

Page 7 of 9

customer shall become delinquent in the payment of service bills, such service may be discontinued by the Company under the applicable rules of the Commission.

- iii. If a customer's credit standing becomes unsatisfactory after a deposit has been refunded or if the deposit is inadequate to cover the estimated charge for furnishing service for a 60-day period, a new or additional deposit may be required upon reasonable written notice by the Company.
- iv. Pursuant to North Dakota Administrative Rules 69-09-02-05.1(10), the Company may not discontinue service to the Customer for nonpayment of a deposit.
- v. The Company may collect a fee of \$20.00 before restoring electric service which has been discontinued for nonpayment of service bills, or where a Service Extender has been installed in lieu of full disconnection.

9. DISCONTINUANCE OF SERVICE FOR CAUSES OTHER THAN NONPAYMENT OF BILLS:

The Company reserves the right to discontinue service for any of the following reasons:

- i. In the event of customer use of equipment in such a manner as to adversely affect the Company's equipment or service to others.
- ii. In the event of tampering with the equipment furnished and owned by the Company.
- iii. For violation of or noncompliance with the Company's rules on file with the Commission.
- iv. For failure of the customer to fulfill the contractual obligations imposed as conditions of obtaining service.

Date Filed: June 26, 2017

Effective Date: Service rendered on and
after August 7, 2017

Issued By: Tamie A. Aberle
Director of Regulatory Affairs

Case No.: PU-16-666



Montana-Dakota Utilities Co.

A Division of MDU Resources Group, Inc.

400 N 4th Street
Bismarck, ND 58501

State of North Dakota Electric Rate Schedule

NDPSC Volume 4
1st Revised Sheet No. 49.7
Canceling Original Sheet No. 49.7

GENERAL PROVISIONS Rate 100

Page 8 of 9

- v. For refusal of reasonable access to property to the agent or employee of the Company for the purpose of inspecting the facilities or for testing, reading, maintaining or removing meters.

The right to discontinue service for any of the above reasons may be exercised whenever and as often as such reasons may occur, and any delay on the part of the Company in exercising such rights, or omission of any action permissible hereunder, shall not be deemed a waiver of its rights to exercise same.

Nothing in these regulations shall be construed to prevent discontinuing service without advance notice for reasons of safety, health, cooperation with civil authorities, or fraudulent use, tampering with or destroying Company facilities.

The Company may collect a reconnect fee of \$20.00 before restoring electric service, which has been disconnected for the above causes.

10. BILL DISCOUNT FOR QUALIFYING EMPLOYEES:

A bill discount may be available for residential use only in a single family unit served by Montana-Dakota Utilities Co. to qualifying retirees of MDU Resources and its subsidiaries. The bill shall be computed at the applicable rate, and the amount reduced by 33 1/3%.

11. METHOD OF COMPUTING INITIAL OR FINAL BILLS FOR ELECTRIC SERVICE FOR LESS THAN A FULL MONTHLY BILLING PERIOD:

Customer's meters are read as nearly as practicable at thirty day intervals. When service is begun or terminated at any location between regular meter reading dates, bills will be prorated on a daily basis, whenever the billing period is less than 27 calendar days or more than 35 calendar days. The minimum monthly bill, basic service charge, kilowatt hour blocks and demand charge provisions in all rate schedules will be prorated.

Date Filed: June 26, 2017

Effective Date: Service rendered on and after August 7, 2017

Issued By: Tamie A. Aberle
Director of Regulatory Affairs

Case No.: PU-16-666



Montana-Dakota Utilities Co.

A Division of MDU Resources Group, Inc.

400 N 4th Street
Bismarck, ND 58501

State of North Dakota Electric Rate Schedule

NDPSC Volume 4

2nd Revised Sheet No. 49.8

Canceling 1st Revised Sheet No. 49.8

GENERAL PROVISIONS Rate 100

Page 9 of 9

12. SELECTIVE TESTING PLAN FOR METERS:

The electric meter population shall be tested in accordance with the Electric Meter Testing Program approved by the Commission.

13. BILLING ADJUSTMENTS:

If a meter or billing error results from 1) an inaccurate meter; 2) an Incorrect reading of the meter; 3) an incorrect application of a rate schedule; 4) an incorrect connection of the meter; 5) an application of an incorrect multiplier or constant; or 6) other similar errors affecting customer bills.

- i. If a Customer is underbilled, the Company may recalculate the bills and reissue corrected bills for service during the period of the error, up to a maximum period of six years from the date of the bill, with the exception of a meter equipment failure.
- ii. If a Customer is overbilled, the Company shall recalculate bills for errors resulting in overcharges up to a maximum of six years from the date of payment, with the exception of a meter equipment failure. In the case of a meter equipment failure, the Company may charge the Customer for a period equal to one-half the time elapsed since the last previous meter test, but not to exceed six months.

14. MODIFICATION OF RATES, RULES AND REGULATIONS:

Company reserves the right to modify its rates, rules, and regulations or other provisions now or hereafter in effect, in any manner permitted by law.

Date Filed: June 26, 2017

Effective Date: Service rendered on and after August 7, 2017

Issued By: Tamie A. Aberle
Director of Regulatory Affairs

Case No.: PU-16-666



Montana-Dakota Utilities Co.

A Division of MDU Resources Group, Inc.

400 N 4th Street
Bismarck, ND 58501

State of North Dakota Electric Rate Schedule

NDPSC Volume 4
1st Revised Sheet No. 49.9
Canceling Original Sheet No 49.9

Reserved for Future Use

Date Filed: June 20, 2013

Effective Date: Service rendered on and
after August 1, 2013

Issued By: Tamie A. Aberle
Director of Regulatory Affairs

Case No.: PU-13-385



Montana-Dakota Utilities Co.

A Division of MDU Resources Group, Inc.

400 N 4th Street
Bismarck, ND 58501

State of North Dakota Electric Rate Schedule

NDPSC Volume 4
1st Revised Sheet No. 50
Canceling Original Sheet No. 50

Reserved for future use

Date Filed: June 14, 2011

Effective Date: Service rendered on and
after July 22, 2011

Issued By: Tamie A. Aberle
Regulatory Affairs Manager

Case No.: PU-10-124



Montana-Dakota Utilities Co.

A Division of MDU Resources Group, Inc.

400 N 4th Street
Bismarck, ND 58501

State of North Dakota Electric Rate Schedule

NDPSC Volume 4
1st Revised Sheet No. 51
Canceling Original Sheet No. 51

Reserved for future use

Date Filed: June 14, 2011

Effective Date: Service rendered on and
after July 22, 2011

Issued By: Tamie A. Aberle
Regulatory Affairs Manager

Case No.: PU-10-124



Montana-Dakota Utilities Co.

A Division of MDU Resources Group, Inc.

400 N 4th Street
Bismarck, ND 58501

State of North Dakota Electric Rate Schedule

NDPSC Volume 4
1st Revised Sheet No. 53
Canceling Original Sheet No. 53

Reserved for future use

Date Filed: June 14, 2011

Effective Date: Service rendered on and
after July 22, 2011

Issued By: Tamie A. Aberle
Regulatory Affairs Manager

Case No.: PU-10-124



Montana-Dakota Utilities Co.

A Division of MDU Resources Group, Inc.

400 N 4th Street
Bismarck, ND 58501

State of North Dakota Electric Rate Schedule

NDPSC Volume 4
1st Revised Sheet No. 54
Canceling Original Sheet No. 54

Reserved for future use

Date Filed: June 14, 2011

Effective Date: Service rendered on and
after July 22, 2011

Issued By: Tamie A. Aberle
Regulatory Affairs Manager

Case No.: PU-10-124



Montana-Dakota Utilities Co.

A Division of MDU Resources Group, Inc.

400 N 4th Street
Bismarck, ND 58501

State of North Dakota Electric Rate Schedule

NDPSC Volume 4
1st Revised Sheet No. 55
Canceling Original Sheet No. 55

Reserved for future use

Date Filed: June 14, 2011

Effective Date: Service rendered on and
after July 22, 2011

Issued By: Tamie A. Aberle
Regulatory Affairs Manager

Case No.: PU-10-124



Montana-Dakota Utilities Co.

A Division of MDU Resources Group, Inc.

400 N 4th Street
Bismarck, ND 58501

State of North Dakota Electric Rate Schedule

NDPSC Volume 4
1st Revised Sheet No. 56
Canceling Original Sheet No. 56

Reserved for future use

Date Filed: June 14, 2011

Effective Date: Service rendered on and
after July 22, 2011

Issued By: Tamie A. Aberle
Regulatory Affairs Manager

Case No.: PU-10-124



Montana-Dakota Utilities Co.

A Division of MDU Resources Group, Inc.

400 N 4th Street
Bismarck, ND 58501

State of North Dakota Electric Rate Schedule

NDPSC Volume 4

2nd Revised Sheet No. 58

Canceling 1st Revised Sheet No. 58

ELECTRIC SERVICE RULES AND REGULATIONS Rate 110

Page 1 of 32

MONTANA-DAKOTA UTILITIES CO.

ELECTRIC SERVICE RULES and REGULATIONS

Date Filed: June 26, 2017

Effective Date: Service rendered on and
after August 7, 2017

Issued By: Tamie A. Aberle
Director – Regulatory Affairs

Case No.: PU-16-666



Montana-Dakota Utilities Co.

A Division of MDU Resources Group, Inc.

400 N 4th Street
Bismarck, ND 58501

State of North Dakota Electric Rate Schedule

NDPSC Volume 4

2nd Revised Sheet No. 58.1

Canceling 1st Revised Sheet No. 58.1

TABLE OF CONTENTS

ELECTRIC SERVICE RULES AND REGULATIONS Rate 110

Page 2 of 32

		<u>Page No.</u>
Section	100 - GENERAL	
	101 Definitions	6
	102 Purpose	6
	103 Customer Obligation	6-7
	104 Liability	7-9
	105 Electrical Codes and Ordinances	9
	106 Wiring Adequacy	9
	107 Inspection of Wiring	10
	108 Permits, Certificates, Affidavits	10
	109 Consultation with the Company	10
	110 Unauthorized Use of Service	10-11
	111 Unauthorized Attachments to Poles	11
Section	200 - USE OF ELECTRIC SERVICE	
	201 Rate Schedules	12
	202 Resale of Energy	12
	203 Temporary Service	12
	204 Standby Service	12
	205 Parallel Service	12
	206 Transformer Installations on Customer's Premises	13
	207 Overhead to Underground Primary Conversion	14
Section	300 - ELECTRIC SERVICE AVAILABLE	
	301 Frequency	14
	302 Secondary Voltages	14-15
	303 Primary Voltages	15

Date Filed: June 26, 2017

Effective Date: Service rendered on and
after August 7, 2017

Issued By: Tamie A. Aberle
Director – Regulatory Affairs

Case No.: PU-16-666



Montana-Dakota Utilities Co.

A Division of MDU Resources Group, Inc.

400 N 4th Street
Bismarck, ND 58501

State of North Dakota Electric Rate Schedule

NDPSC Volume 4

2nd Revised Sheet No. 58.2

Canceling 1st Revised Sheet No. 58.2

TABLE OF CONTENTS ELECTRIC SERVICE RULES AND REGULATIONS Rate 110

Page 3 of 32

			<u>Page No.</u>
Section	400	- SECONDARY VOLTAGE SERVICE (Under 600 Volts)	
	401	Secondary Voltage Service Connections	15
	402	Service Connections and Disconnections	16
	403	Number of Service Drops	16
	404	Services in Raceways	16
	405	Service Entrance Requirements	16
	406	Identification of Conductors	16
	407	Overhead Service Drops	17-18
	408	Secondary Voltage Underground Service	19
	409	Mobile Home Service	19
Section	500	- PRIMARY VOLTAGE SERVICE (2400 Volts or More)	
	501	General	19
	502	Service Entrance Equipment	20
	503	Overcurrent Protection	20
	504	Disconnecting Means	20
	505	Load Balance	20
Section	600	- METERING	
	601	General	20
	602	Meter Installations	21-22
	603	Meter-Switch-Fuse Wiring Sequence	22
	604	Meter Locations	23
	605	Indoor Metering	23
	606	Wiring Diagrams	23
	607	Labeling	23
	608	Seals	24

Date Filed: June 26, 2017

Effective Date: Service rendered on and
after August 7, 2017

Issued By: Tamie A. Aberle
Director – Regulatory Affairs

Case No.: PU-16-666



Montana-Dakota Utilities Co.

A Division of MDU Resources Group, Inc.

400 N 4th Street
Bismarck, ND 58501

State of North Dakota Electric Rate Schedule

NDPSC Volume 4

2nd Revised Sheet No. 58.3

Canceling 1st Revised Sheet No. 58.3

TABLE OF CONTENTS

ELECTRIC SERVICE RULES AND REGULATIONS Rate 110

Page 4 of 32

Section	700	- UTILIZATION EQUIPMENT	
	701	Interfering Loads	24
	702	Voltage Flicker and Harmonics	24
	703	Power Factor	24
	704	X-Ray Equipment	25
	705	Electric Welders	25
	706	Electric Motors	25-26
	707	Flashing Display Signs	26
	708	Fluorescent and Gaseous Tub Lighting	26
	709	Electric Heat Equipment	26
	710	Computers and Electronic Equipment	26
	711	Carrier Equipment	26

Date Filed: June 26, 2017

Effective Date: Service rendered on and
after August 7, 2017

Issued By: Tamie A. Aberle
Director – Regulatory Affairs

Case No.: PU-16-666



Montana-Dakota Utilities Co.

A Division of MDU Resources Group, Inc.

400 N 4th Street
Bismarck, ND 58501

State of North Dakota Electric Rate Schedule

NDPSC Volume 4

2nd Revised Sheet No. 58.4

Canceling 1st Revised Sheet No. 58.4

TABLE OF CONTENTS

ELECTRIC SERVICE RULES AND REGULATIONS Rate 110

Page 5 of 32

Page No.

ILLUSTRATIONS

Figure 1	- Typical Service Attachment	27
Figure 2	- Transformer Rated Metering, Padmount Transformer	28
Figure 3	- Transformer Rated Metering, Overhead or Underground Service	29
Figure 4	- Polyphase Self Contained Meter Connections	30
Figure 5	- Typical Padmount Equipment Installation	31
Figure 6	- Typical Transition Cabinet Installation	32

Date Filed: June 26, 2017

Effective Date: Service rendered on and after August 7, 2017

Issued By: Tamie A. Aberle
Director – Regulatory Affairs

Case No.: PU-16-666



Montana-Dakota Utilities Co.

A Division of MDU Resources Group, Inc.

400 N 4th Street
Bismarck, ND 58501

State of North Dakota Electric Rate Schedule

NDPSC Volume 4

2nd Revised Sheet No. 58.5

Canceling 1st Revised Sheet No. 58.5

ELECTRIC SERVICE RULES AND REGULATIONS Rate 110

Page 6 of 32

101. Definitions

Company – Montana-Dakota Utilities Co.

Customer – Any individual, partnership, corporation firm, other organization or government agency supplied with service by the Company at one location and one point of delivery unless otherwise expressly provided in these rules or in a rate schedule.

102. Purpose

These rules are intended to define good practice which can normally be expected, but are not intended to exclude other generally accepted standards and practices not covered herein. They are intended to ensure adequate service to the public and protect the Company from unreasonable demands.

The Company undertakes to furnish service subject to the rules and regulations of the Regulatory Commissions as supplemented by these general provisions, as now in effect or as may hereafter be lawfully established, and in accepting service from the Company, each customer agrees to comply with and be bound by said rules and regulations and the applicable rate schedules.

103. Customer Obligation

103.1 Application for Service – A customer desiring electric service must submit an application to the Company before commencing the use of the Company’s service. The Company reserves the right to require a signed application or written contract for service to be furnished. All applications and contracts for service must be made in the legal name of the customer desiring the service. The Company may refuse service or terminate service to a customer who fails or refuses to furnish reasonable information requested by the Company for the establishment of a service account. Any customer who uses electric service shall be subject to the Company’s rates, rules, and regulations and shall be responsible for payment of all service used.

Subject to rates, rules and regulations, the Company will continue to supply electric service until notified by the customer to discontinue the service. The customer will be responsible for payment of all service furnished through the date of discontinuance.

Any customer may be required to make a deposit as necessary.

Date Filed: June 26, 2017

Effective Date: Service rendered on and after August 7, 2017

Issued By: Tamie A. Aberle
Director – Regulatory Affairs

Case No.: PU-16-666



Montana-Dakota Utilities Co.

A Division of MDU Resources Group, Inc.

400 N 4th Street
Bismarck, ND 58501

State of North Dakota Electric Rate Schedule

NDPSC Volume 4

2nd Revised Sheet No. 58.6

Canceling 1st Revised Sheet No. 58.6

ELECTRIC SERVICE RULES AND REGULATIONS Rate 110

Page 7 of 32

103.2 Access to Customer's Premises – Company representatives, when properly identified, shall have access to customer's premises at all reasonable times for the purpose of reading meters, making repairs, making inspections, removing the Company's property, or for any other purpose incidental to the service.

103.3 Company Property – The customer shall not disconnect, change connections, make connections or otherwise interfere with Company's meters or other property or permit same to be done by other than the Company's authorized employees.

103.4 Relocated Facilities – Where Company facilities are located on or adjacent to a customer's premises where there is an encroachment(s) to electric facilities the customer shall be charged for line relocation on the basis of actual costs incurred by the Company including any required easements.

103.5 Notification of Unsafe Conditions – The customer shall immediately notify the Company of any unsafe conditions associated with the Company's electric facilities at the customer's premises.

103.6 Termination of Service – All customers are required to notify the Company, to prevent their liability for service used by succeeding tenants, when vacating their premises. Upon receipt of such notice, the Company will read the meter and further liability for service used on the part of the vacating customer will cease.

104. Liability

104.1 Continuity of Service – The Company's electric system is unusually widespread and has many interconnections with sources of power other than its own generating stations and it is subject to exposure by storms and other factors not under its control. The Company employs the latest developments in equipment and methods of operation for the purpose of maintaining adequate service. The Company will use all reasonable care to provide continuous service but does not assume responsibility for a regular and uninterrupted supply of electric service and will not be liable for any loss, injury, death or damage resulting from or caused by the interruption of the same.

Date Filed: June 26, 2017

Effective Date: Service rendered on and after August 7, 2017

Issued By: Tamie A. Aberle
Director – Regulatory Affairs

Case No.: PU-16-666



Montana-Dakota Utilities Co.

A Division of MDU Resources Group, Inc.

400 N 4th Street
Bismarck, ND 58501

State of North Dakota Electric Rate Schedule

NDPSC Volume 4

2nd Revised Sheet No. 58.7

Canceling 1st Revised Sheet No. 58.7

ELECTRIC SERVICE RULES AND REGULATIONS Rate 110

Page 8 of 32

104.2 Customer's Equipment – Neither by inspection or rejection, nor in any other way does the Company give any warranty, expressed or implied, as to the adequacy, safety or other characteristics of any structures, equipment, lines, appliances or devices owned, installed or maintained by the customer, leased by the customer from third parties or used on the customers premise. It is the obligation of the customer to consult with the Company regarding available maximum fault current and to provide such protection devices as may be necessary to safeguard the equipment and installation from interruptions, variation in voltage and frequency, single-phase energization of three-phase lines, reversal of phase rotation or other abnormal conditions. (Refer to Paragraph 710)

104.3 Company Equipment and Use of Service – The Company will not be liable for any loss, injury, death or damage resulting in any way from the supply or use of electricity or from the presence or operation of the Company's structures, equipment, lines, appliances or devices on the customer's premises, except loss, injuries, death, or damages resulting from the negligence of the Company.

104.4 Indemnification – Customer agrees to indemnify and hold Company harmless from any and all injury, death, loss or damage resulting from customer's negligent or wrongful acts under and during the term of service. Company agrees to indemnify and hold customer harmless from any and all injury, death, loss or damage resulting from Company's negligent or wrongful acts under and during the term of service.

104.5 Force Majeure – In the event of either party being rendered wholly or in part by force majeure unable to carry out its obligations, then the obligations of the parties hereto, so far as they are affected by such force majeure, shall be suspended during the continuance of any inability so caused. Such causes or contingencies affecting the performance by either party, however, shall not relieve it of liability in the event of its concurring negligence or in the event of its failure to use due diligence to remedy the situation and remove the cause in an adequate manner and with all reasonable dispatch, nor shall such causes or contingencies affecting the performance relieve either party from its obligations to make payments of amounts then due hereunder, nor shall such causes or contingencies relieve either party of liability unless such party shall give notice and full particulars of the same in writing or by telephone to the other party as soon as possible after the occurrence relied on.

Date Filed: June 26, 2017

Effective Date: Service rendered on and after August 7, 2017

Issued By: Tamie A. Aberle
Director – Regulatory Affairs

Case No.: PU-16-666



Montana-Dakota Utilities Co.

A Division of MDU Resources Group, Inc.

400 N 4th Street
Bismarck, ND 58501

State of North Dakota Electric Rate Schedule

NDPSC Volume 4

2nd Revised Sheet No. 58.8

Canceling 1st Revised Sheet No. 58.8

ELECTRIC SERVICE RULES AND REGULATIONS Rate 110

Page 9 of 32

The term “force majeure” as employed herein shall include, but shall not be limited to, acts of God, strikes, lockouts or other industrial disturbances, failure to perform by any third party, which performance is necessary to the performance by either customer or Company, acts of the public enemy or terrorists, wars, blockades, insurrections, riots, epidemics, landslides, lightning, earthquakes, fires, storms, floods, washouts, arrest and restraint of rulers and peoples, civil disturbances, explosions, breakage or accident to machinery or electric lines, animal interference, sudden partial or sudden entire failure of electric transmission or supply, failure to obtain materials and supplies due to governmental regulations, and causes of like or similar kind, whether herein enumerated or not, and not within the control of the party claiming suspension, and which by the exercise of due diligence such party is unable to overcome; provided that the exercise of due diligence shall not require settlement of labor disputes against the better judgment of the party having the dispute.

The term “force majeure” as employed herein shall also include, but shall not be limited to, inability to obtain or acquire, at reasonable cost, grants, servitudes, rights-of-way, permits, licenses, or any other authorization from third parties or agencies (private or governmental) or inability to obtain or acquire at reasonable cost necessary materials or supplies to construct, maintain, and operate any facilities required for the performance of any obligations under this agreement, when any such inability directly or indirectly contributes to or results in either party’s inability to perform its obligations.

105. Electrical Codes and Ordinances

The Electric Service Rules and Regulations contained herein are supplementary to and do not intentionally conflict with nor supersede the latest edition of the National Electrical Code, the National Electrical Safety Code, nor such state and municipal laws and ordinances that may be in effect in the areas in which the Company furnishes electric service, except that where the requirements of these Electric Service Rules and Regulations exceed those of such codes, laws, and ordinances, these Electric Service Rules and Regulations shall apply. Existing installations, including maintenance replacements, that currently comply with prior revisions of these rules and regulations, need not be modified to comply with these rules except as may be required for safety reasons.

106. Wiring Adequacy

Wiring codes provide minimum requirements for safety. Installation of wiring capacity greater than minimum code requirements is recommended to bring to the customer all the benefits of electric service and to protect building investment by minimizing obsolescence resulting from an inadequate wiring system.

Date Filed: June 26, 2017

Effective Date: Service rendered on and after August 7, 2017

Issued By: Tamie A. Aberle
Director – Regulatory Affairs

Case No.: PU-16-666



Montana-Dakota Utilities Co.

A Division of MDU Resources Group, Inc.

400 N 4th Street
Bismarck, ND 58501

State of North Dakota Electric Rate Schedule

NDPSC Volume 4

2nd Revised Sheet No. 58.9

Canceling 1st Revised Sheet No. 58.9

ELECTRIC SERVICE RULES AND REGULATIONS Rate 110

Page 10 of 32

107. Inspection of Wiring

Where permits and inspections covering customer's wiring and installation are required by local ordinance, it is mandatory that such requirements be fulfilled before the Company will make connections to the customer's installation. In locations where such inspections are not required by law or ordinance, an affidavit by the wiring contractor stating that the wiring has been done in compliance with the National Electrical Code will be acceptable.

108. Permits, Certificates, Affidavits

It is the responsibility of the customer to obtain all necessary permits, certificates of inspection or affidavits as required in Paragraph 107 above and to notify the Company promptly of any proposed alterations or additions to customer's load. Failure to comply with these requirements may result in delayed connection, interruption of service or damage to apparatus.

109. Consultation with the Company

109.1 The location, size and character of the customer's load and the current, voltage, frequency, phases, etc. which the Company has available at the customer's location will determine the type of service supplied to the customer.

109.2 Architects, engineers, contractors, electric dealers, wiremen and others must confer with local representatives of the Company to determine the type of service that will be available before designing or preparing specifications for new electrical installations or alterations to existing installations.

109.3 In all cases involving large installations and other cases where any doubt exists, full information as to the type of service available should be obtained from the Company.

110. Unauthorized Use of Service

110.1 Unauthorized use of service is defined as any deliberate interference that results in a loss of revenue to the Company. Violators are subject to prosecution.

110.2 Types of unauthorized use of service include, but are not limited to, the following:

- (a) Bypass around meter.
- (b) Meter reversed.
- (c) Equipment connected ahead of meter.

Date Filed: June 26, 2017

Effective Date: Service rendered on and after August 7, 2017

Issued By: Tamie A. Aberle
Director – Regulatory Affairs

Case No.: PU-16-666



Montana-Dakota Utilities Co.

A Division of MDU Resources Group, Inc.

400 N 4th Street
Bismarck, ND 58501

State of North Dakota Electric Rate Schedule

NDPSC Volume 4

2nd Revised Sheet No. 58.10

Canceling 1st Revised Sheet No. 58.10

ELECTRIC SERVICE RULES AND REGULATIONS Rate 110

Page 11 of 32

- (d) Tampering with meter that affects the accurate registration of electric usage.
- (e) Electricity being used after service has been discontinued by the Company.

110.3 In the event that there has been unauthorized use of service, customer shall be charged for:

- (a) All costs associated with investigation or surveillance;
- (b) Estimated charge for non-metered electricity;
- (c) All time to correct situation;
- (d) Any damage to Company property.

110.4 A customer's service disconnected for unauthorized use of service shall be reconnected after the customer has furnished satisfactory evidence of compliance with Company's rules and conditions of service, and paid any charges which are due, including:

- (a) All delinquent bills, if any;
- (b) The amount of any Company revenue loss attributable to said tampering;
- (c) Expenses incurred by the Company in replacing or repairing the meter or other equipment, costs incurred in the preparation of the bill, plus costs as outlined in Paragraph 110.3;
- (d) Applicable reconnection fee;
- (e) A cash deposit, the amount of which will not exceed the maximum amount determined in accordance with rules of the applicable State Public Service or Utilities Commission.

111. Unauthorized Attachments to Poles

111.1 The unauthorized attachment of any flags, banners, signs, clotheslines, antennas, etc. to Company poles is prohibited. The use of poles for placards or other advertising matter is forbidden. The Company will remove such unauthorized attachments without notice and may prosecute any such trespassers.

111.2 Customers are cautioned to locate antennas so that they are beyond falling distance from the Company's lines, either transmission or distribution. Antennas and lead-ins shall be located a safe distance from and shall never cross over or under the Company's lines or contact the Company's poles. The Company disclaims all responsibility where such equipment contacts the Company's lines, poles or equipment.

Date Filed: June 26, 2017

Effective Date: Service rendered on and after August 7, 2017

Issued By: Tamie A. Aberle
Director – Regulatory Affairs

Case No.: PU-16-666



Montana-Dakota Utilities Co.

A Division of MDU Resources Group, Inc.

400 N 4th Street
Bismarck, ND 58501

State of North Dakota Electric Rate Schedule

NDPSC Volume 4

2nd Revised Sheet No. 58.11

Canceling 1st Revised Sheet No. 58.11

ELECTRIC SERVICE RULES AND REGULATIONS Rate 110

Page 12 of 32

Section 200 - USE OF ELECTRIC SERVICE

201. Rate Schedules

Electric service will be billed under the rate schedule that applies to the class of service used. Rate schedules applicable to various classes of service may be obtained from the Company upon request.

202. Resale of Energy

The Company will not supply energy for resale except as expressly covered by special contract or where such provision is a part of the rate schedule.

203. Temporary Service

Temporary service is any service for construction work, carnivals, gravel pits, occasional lighting, etc., which is not expected to continue in use for a period long enough to justify the construction cost necessary for extending service. When temporary service is desired the customer shall, in addition to paying the scheduled rates, make deposit in advance in the amount of the Company's estimated cost of installing and furnishing such temporary service facilities together with the cost of disconnecting and removing same and the estimated billing to the customer for electric service. Final billing will reflect credit for the salvage value of materials used in providing the temporary service. Any deficiency in such advance payment shall be paid by the customer upon presentation of a bill by the Company. Any amount deposited in excess of final billing by the Company will be refunded to the customer.

204. Standby Service

Where electric service is supplied as standby to a customer's generating facilities or vice versa, the customer shall provide and install at the customer's expense a suitable double-throw switch or other device which will completely isolate the customer's power facilities from the Company's system. The service entrance shall be installed so that the phase conductors will be totally isolated from the customer's wiring before the standby unit is put into operation.

205. Parallel Service

Parallel operation of the customer's generating equipment with the Company's system shall be permitted to the extent provided in other approved rates.

Date Filed: June 26, 2017

Effective Date: Service rendered on and after August 7, 2017

Issued By: Tamie A. Aberle
Director – Regulatory Affairs

Case No.: PU-16-666



Montana-Dakota Utilities Co.

A Division of MDU Resources Group, Inc.

400 N 4th Street
Bismarck, ND 58501

State of North Dakota Electric Rate Schedule

NDPSC Volume 4

2nd Revised Sheet No. 58.12

Canceling 1st Revised Sheet No. 58.12

ELECTRIC SERVICE RULES AND REGULATIONS Rate 110

Page 13 of 32

206. Transformer Installations on the Customer's Premises

206.1 The Company will supply transformers to be installed on the customer's premises when requested by the customer and in accordance with the following paragraphs.

206.2 The customer shall agree to indemnify and save the Company harmless from any loss, damage, expense or liability, incurred or arising from, or out of the installation, operation, maintenance, repair or removal of its transformers, cables, conductors, apparatus and all other Company property, material or equipment placed on the customer's premises.

206.3 Company's power or distribution transformers will not be installed in the customer's building.

206.4 The Company will furnish, own and maintain conventional oil filled transformers at no cost to the customer. However, where dry type transformers, transformers containing a nonflammable insulating coolant or oil filled transformers of special voltage or design are required they shall be owned, installed and maintained by the customer at the customer's expense.

206.5 Padmount transformers may be installed on customer's premises. The customer shall furnish a suitable concrete pad, conduit, ground rod and service conductors as noted in Figure 5. Where the customer has more than four parallel conductors, a cable junction enclosure and conduits to the transformer location may be required. The customer shall consult with the Company to determine when a cable junction enclosure is required.

206.6 Where the transformer is installed adjacent to an asphalt or concrete driveway, parking lot, or walkway, the customer shall provide conduit from the transformer location to a point beyond the driveway, parking lot, or walkway to accommodate the Company's primary voltage cable. The customer shall provide barriers and clear zones to protect transformer from damage and to allow proper cooling and access to conductor compartments. The customer shall consult with the Company to determine the proper size conduit and protective barriers.

206.7 Refer to Figure 5 for additional information on transformer location.

Date Filed: June 26, 2017

Effective Date: Service rendered on and after August 7, 2017

Issued By: Tamie A. Aberle
Director – Regulatory Affairs

Case No.: PU-16-666



Montana-Dakota Utilities Co.

A Division of MDU Resources Group, Inc.

400 N 4th Street
Bismarck, ND 58501

State of North Dakota Electric Rate Schedule

NDPSC Volume 4

2nd Revised Sheet No. 58.13

Canceling 1st Revised Sheet No. 58.13

ELECTRIC SERVICE RULES AND REGULATIONS Rate 110

Page 14 of 32

207. Overhead to Underground Primary Conversion

When requested by property owners, underground distribution and services will be provided to replace existing overhead distribution to a group of owners cooperating with one another, providing:

- (a) There exists a sufficient number (25) of homes on contiguous lots that are available for the conversion. At the Company's option, smaller groups could be acceptable.
- (b) The terrain and other soil conditions are suitable for installation of underground facilities.
- (c) Easements will be granted at no cost to the Company, wherever installed facilities are on private land.
- (d) The customer, at customer's expense, must adapt the customer's electrical facilities to accept an underground service.
- (e) The customer, or group of customers, provide payment for the cost of removal of overhead facilities and total installed cost, multiplied by the fractional life remaining, less the salvage value of the removed equipment. The customers may also be required to reimburse the company for other reasonable and prudent costs in excess of the Company's standard installation that result from the installation of the requested underground distribution.

Section 300 - ELECTRIC SERVICE AVAILABLE

301. Frequency

All service supplied by the Company is alternating current at a nominal frequency of 60 Hertz.

302. Secondary Voltages (See also Section 400)

302.1 In general, the following classes of service are normally supplied:

<u>Phase</u>	<u>Wires</u>	<u>Nominal Voltage</u>	<u>Nominal Service</u>
1	3	120/240	Single Phase Lighting & Power
3	4 Delta	120/240	Combined Light & Power *
3	4 Wye	208 Grd Y/120	Combined Light & Power
3	4 Wye	480 Grd Y/277	Combined Light & Power **
3	4 Delta	240/480	Combined Light & Power *

*Overhead Primary

**Underground Primary

Date Filed: June 26, 2017

Effective Date: Service rendered on and after August 7, 2017

Issued By: Tamie A. Aberle
Director – Regulatory Affairs

Case No.: PU-16-666



Montana-Dakota Utilities Co.

A Division of MDU Resources Group, Inc.

400 N 4th Street
Bismarck, ND 58501

State of North Dakota Electric Rate Schedule

NDPSC Volume 4

2nd Revised Sheet No. 58.14

Canceling 1st Revised Sheet No. 58.14

ELECTRIC SERVICE RULES AND REGULATIONS Rate 110

Page 15 of 32

Note: The Company follows the provisions of ANSI C84.1; latest revision, Electric Power Systems and Equipment – Voltage Ratings (60 Hertz)

302.2 Only one class of service voltage is provided to a single customer location.

302.3 Service at other voltages may be made available for approved loads upon special application to the Company. Supplying such service may require special construction and equipment by the customer and the Company. The details of such construction and equipment are subject to negotiation between the Company and the customer before service is supplied.

302.4 As the voltage and number of phases which will be supplied depend upon the character of the load, its size, and location, it is necessary that the customer consult with the Company regarding the type of service which will be furnished before proceeding with the purchase of equipment or the installation of wiring. (Refer to Paragraph 109)

302.5 The customer's wiring for single phase installations shall be such that the difference in loads on each side of the supply neutral shall not exceed 10% of the total load.

302.6 For three phase grounded wye installations, the load shall be balanced so that the difference in loads on the separate phases shall not exceed 10% of the total load.

303. Primary Voltages (See also Section 500)

Service may be made available at primary voltage of 2400 volts or higher. The available primary voltage is dependent upon the local primary voltage.

Section 400 - SECONDARY VOLTAGE SERVICE

(Under 600 Volts)

401. Secondary Voltage Service Connections

The location of the service connection is subject to approval by the Company. The Company will cooperate with the customer to the fullest extent practicable in determining such location. Once established, any change by the customer may result in billing to the customer for any additional work or materials required by the Company.

Date Filed: June 26, 2017

Effective Date: Service rendered on and after August 7, 2017

Issued By: Tamie A. Aberle
Director – Regulatory Affairs

Case No.: PU-16-666



Montana-Dakota Utilities Co.

A Division of MDU Resources Group, Inc.

400 N 4th Street
Bismarck, ND 58501

State of North Dakota Electric Rate Schedule

NDPSC Volume 4

2nd Revised Sheet No. 58.15

Canceling 1st Revised Sheet No. 58.15

ELECTRIC SERVICE RULES AND REGULATIONS Rate 110

Page 16 of 32

402. Service Connections and Disconnections

All connections or disconnections of overhead or underground services, regardless of the voltage, will be made by the Company at the point where the Company's facilities join those of the customer. No customer or agent of the customer will be authorized to make such connections or disconnections. (Refer to Paragraphs 103.1, 107, and 108.)

403. Number of Service Drops

In general, one service drop will be installed for each customer location. Exceptions will be made in special cases where it is mutually advantageous to the customer and the Company.

404. Services in Raceways

Where services are installed in raceways, the installations must comply with the requirements of the latest edition of the National Electrical Code. In addition, metered conductors shall not be installed in the same raceway as unmetered service conductors.

405. Service Entrance Requirements

405.1 The Company recommends that the service entrance for single family residences be not less than 100 ampere. The service entrance shall be sized and installed in accordance with provisions of the National Electric Code, state code, and local ordinances. Bare neutral wire shall not be installed in metallic conduit due to the possibility of radio interference.

405.2 Ample length of service entrance conductor shall be left protruding from the service head and at padmount equipment facilities to allow for proper connection to the service drop for overhead installations and to padmount equipment terminals.

405.3 When entrances are parallel in two or more conduits, all phases shall be run in each conduit and all wires shall be of the same length.

406. Identification of Conductors

406.1 For purposes of identification, the neutral wire of each single phase entrance shall be clearly marked at the service outlet as well as at the meter location.

406.2 Where 4-wire, three phase service entrances are installed, the neutral conductor and the "wild" phase conductor (nominal 208 volts to ground) shall each be clearly

Date Filed: June 26, 2017

Effective Date: Service rendered on and after August 7, 2017

Issued By: Tamie A. Aberle
Director – Regulatory Affairs

Case No.: PU-16-666



Montana-Dakota Utilities Co.

A Division of MDU Resources Group, Inc.

400 N 4th Street
Bismarck, ND 58501

State of North Dakota Electric Rate Schedule

NDPSC Volume 4

2nd Revised Sheet No. 58.16

Canceling 1st Revised Sheet No. 58.16

ELECTRIC SERVICE RULES AND REGULATIONS Rate 110

Page 17 of 32

marked at the service outlet, at the meter and at service equipment.

407. Overhead Service Drops

407.1 The service entrance shall preferably be through the eave and be located so the overhead service drop will be as short as practical and maintain all clearance requirements. (Refer to Figure 1 and Paragraph 407.4)

407.2 In cases where proper clearances cannot be maintained by attaching the service drop directly to the building, the customer shall install and maintain a supporting structure of sufficient mechanical strength to support the wires and of sufficient height to provide the necessary clearances.

407.3 The customer shall furnish and install the necessary facilities for firmly mounting a Company supplied service drop attachment.

407.4 Service drop conductors shall not be readily accessible and when not in excess of 750 volts, shall conform to the following general requirements (refer to the National Electrical Safety Code for possible exceptions):

Clearance over roof – Multiplex service drop conductors shall have the following minimum clearance over a roof:

10.0 feet - from the highest point of roofs or balconies over which they pass with the following exceptions:

Exception 1: The clearance shall be maintained at not less than 3.0 feet above roof or balcony not readily accessible.

Exception 2: Where a roof or a balcony is not readily accessible, and a service drop passes over a roof to terminate at a (through-the-roof) raceway or approved support located not more than 4.0 feet, measured horizontally from the edge of the roof, the clearance above the roof shall be maintained at not less than 1.5 feet for a horizontal distance of 6.0 feet from the raceway or support, and shall be maintained at not less than 3.0 feet for the remainder of the horizontal distance that the cable or conductor passes over the roof.

Date Filed: June 26, 2017

Effective Date: Service rendered on and after August 7, 2017

Issued By: Tamie A. Aberle
Director – Regulatory Affairs

Case No.: PU-16-666



Montana-Dakota Utilities Co.

A Division of MDU Resources Group, Inc.

400 N 4th Street
Bismarck, ND 58501

State of North Dakota Electric Rate Schedule

NDPSC Volume 4

2nd Revised Sheet No. 58.17

Canceling 1st Revised Sheet No. 58.17

ELECTRIC SERVICE RULES AND REGULATIONS Rate 110

Page 18 of 32

Note: A roof or balcony is considered readily accessible to a person, on foot, who neither exerts extraordinary physical effort nor employs special tools or devices to gain entry.

Clearance from ground – Multiplex service drop conductors shall have the following minimum clearance from ground:

18.0 feet - over roads, streets and other areas subject to truck traffic. Trucks are defined as any vehicle exceeding 8 feet in height.

18.0 feet - over driveways, parking lots and alleys. This clearance may be reduced to the following values:

- (1) 17 feet - where multiplex service drops cross over or run along alleys, driveways, or parking lots.
- (2) If the height of attachment to a building or other installations does not permit these requirements:
 - (a) 14 feet - over residential driveways for multiplex service drops limited to 150 volts to ground.
 - (b) 10 feet - over residential driveways for drip loops of service drops limited to 150 volts to ground.

14.0 feet - over spaces or ways accessible to pedestrians or restricted traffic only. This clearance may be reduced to the following values:

- (1) If the height of attachment to a building or other installations does not permit these requirements:
 - (a) 12 feet - for multiplex service drops limited to 150 volts to ground.
 - (b) 10 feet - for drip loops of service drops limited to 150 volts to ground.

24.5 feet - over swimming pools, or within 10 feet, measured horizontally, of the pool edge. In addition, there must be 16.5 feet clearance measured in any direction from every point on a diving platform or tower.

The vertical clearance is derived using the latest edition of the National Electric Safety Code rule and, where necessary, adding 2 feet for vertical movement safety factor adopted by Company.

Date Filed: June 26, 2017

Effective Date: Service rendered on and after August 7, 2017

Issued By: Tamie A. Aberle
Director – Regulatory Affairs

Case No.: PU-16-666



Montana-Dakota Utilities Co.

A Division of MDU Resources Group, Inc.

400 N 4th Street
Bismarck, ND 58501

State of North Dakota Electric Rate Schedule

NDPSC Volume 4

2nd Revised Sheet No. 58.18

Canceling 1st Revised Sheet No. 58.18

ELECTRIC SERVICE RULES AND REGULATIONS Rate 110

Page 19 of 32

408. Secondary Voltage Underground Service

408.1 Where the customer desires an underground service, the customer must furnish and install conduit from the line side of the meter socket to a point a minimum of 18 inches below grade. (Refer to Figure 1.) The customer shall also provide necessary conduit for services under any asphalt or concrete driveway, walkway, parking lot, or other areas where it is impractical to excavate.

408.2 If a customer requests to convert from an overhead service to an underground service, the customer must provide all necessary changes to the service entrance, including relocation, and the conduit described in 408.1 above. The customer must also provide a Company approved trench ready to accept the underground service conductors including back filling, surface restoration and any future settlement or erosion. If the customer requests the Company to provide this work, the Company will charge the customer for this service. In addition, if the service length is less than 150 feet, a fee equal to the Company's labor and equipment costs to convert the average 100 feet service line will be charged. If the service length is greater than 150 feet the customer will pay a fee equivalent to the Company's labor and equipment costs for the conversion.

409. Mobile Home Service

The customer shall install and maintain the metering pedestal or meter socket and meter mounting device. The customer, as the term is used in this section, is considered to be the mobile home court owner for installations in approved mobile home courts and the mobile home owner for installations on a private lot.

Section 500 - PRIMARY VOLTAGE SERVICE (2400 Volts or More)

501. General

The Company offers electric service at primary voltages of 2400 volts or higher. A customer desiring to take service at primary voltage shall furnish and own all electrical equipment from the point of delivery and shall consult the Company to assist in determining the size, type and arrangement of service entrance equipment and conductor specifications required for the Customer's particular needs.

Date Filed: June 26, 2017

Effective Date: Service rendered on and after August 7, 2017

Issued By: Tamie A. Aberle
Director – Regulatory Affairs

Case No.: PU-16-666



Montana-Dakota Utilities Co.

A Division of MDU Resources Group, Inc.

400 N 4th Street
Bismarck, ND 58501

State of North Dakota Electric Rate Schedule

NDPSC Volume 4

2nd Revised Sheet No. 58.19

Canceling 1st Revised Sheet No. 58.19

ELECTRIC SERVICE RULES AND REGULATIONS Rate 110

Page 20 of 32

502. Service Entrance Equipment

The service entrance equipment shall perform the following functions:

- a. Isolate the load from the supply circuit by visible means.
- b. Automatically break the circuit in the event of overload.
- c. Permit manual opening of the circuit at full load.

503. Overcurrent Protection

The need for overcurrent protective coordination requires consultation with the Company. Overcurrent protective devices may be as follows:

- a. Fuses
- b. Automatic trip circuit breakers

The overcurrent protective device must have an interrupting rating, at circuit voltage, equal to or exceeding the maximum short circuit current available at the location where service is taken.

504. Disconnecting Means

504.1 The disconnect switch shall provide visible evidence that the circuit to which it is applied is open or disconnected. It shall be located on the supply side of the circuit.

504.2 Where fuses are used, the disconnect switch shall be a gang operated load break switch.

504.3 Where automatic circuit breakers are used as circuit protective equipment, the disconnect switch can be non-load break.

505. Load Balance

Loads on the three phases shall be balanced as closely as possible. The maximum unbalance permitted between individual phase loads is 10% of the total three phase load.

Section 600 – METERING

601. General

The Company will install the necessary meters to measure the electrical energy delivered under each account for a particular class of service.

Date Filed: June 26, 2017

Effective Date: Service rendered on and after August 7, 2017

Issued By: Tamie A. Aberle
Director – Regulatory Affairs

Case No.: PU-16-666



Montana-Dakota Utilities Co.

A Division of MDU Resources Group, Inc.

400 N 4th Street
Bismarck, ND 58501

State of North Dakota Electric Rate Schedule

NDPSC Volume 4

3rd Revised Sheet No. 58.20

Canceling 2nd Revised Sheet No. 58.20

ELECTRIC SERVICE RULES AND REGULATIONS Rate 110

Page 21 of 32

602. Meter Installations

602.1 The Company will furnish all meters required for billing purposes.

It shall be the customer's responsibility to furnish, install and maintain the meter mounting device. Company approved specifications for electric meter sockets and metering transformer enclosures are listed below:

Self-Contained Meter Sockets – Single-Phase, Three-Phase and Multiple Position Type

1. The customer will utilize meter sockets from a Company approved list of manufacturer and models as posted on the Company's website.
2. U.L. approved, ringless style.
3. 100 ampere minimum for overhead service installations.
4. 150 ampere minimum for underground service installations.
5. Stud connectors are required for all sockets rated 320 amps or greater.
6. For sockets rated below 320 amps, study connectors are recommended. Only Company specified meter sockets are approved with lay-in connectors.
7. Equipped with a fifth terminal in the nine o'clock position where network metering is required.
8. A lever by-pass feature is required for all commercial and industrial installations. Upon review by Company, an exemption may be provided.
9. A lever by-pass feature is recommended for all residential installations.

Metering Transformer Rated Meter Socket

1. U.L. approved, ringless style with a one piece cover.
2. Minimum size must provide space for test switch installation.
3. Socket must have six terminals for single phase and 13 terminals for all other configurations.
4. Automatic by-pass feature is not acceptable.
5. The customer will utilize instrument rated meter sockets from a Company approved list of manufacturer and models.

Metering Transformer Enclosure (Secondary Service)

1. Recommend a durable, weather-resistant finish and weatherproof seal.
2. Must be provided with hinge-type cover and provisions to attach locking or sealing device.
3. Minimum size 10" x 24" x 30" with suitable mounting brackets for current and voltage transformers.

Date Filed: June 26, 2017

Effective Date: Service rendered on and after August 7, 2017

Issued By: Tamie A. Aberle
Director – Regulatory Affairs

Case No.: PU-16-666



Montana-Dakota Utilities Co.

A Division of MDU Resources Group, Inc.

400 N 4th Street
Bismarck, ND 58501

State of North Dakota Electric Rate Schedule

NDPSC Volume 4

2nd Revised Sheet No. 58.21

Canceling 1st Revised Sheet No. 58.21

ELECTRIC SERVICE RULES AND REGULATIONS Rate 110

Page 22 of 32

4. Consult with Company prior to purchasing any metering transformer enclosure.

602.2 Self-contained rated meter sockets shall be placed outdoors.

602.3 On instrument rated meter sockets, the Company will furnish and install the metering transformers. Such meter sockets shall be arranged for outdoor metering. (Refer to Figures 2 and 3.)

602.4 Where a secondary metering transformer enclosure is required, the customer shall furnish and install an enclosure. Such enclosures shall contain only the service entrance conductors and metering transformers. The metering transformers shall be installed on the line side of the customer's disconnecting device. Suitable lugs, connectors, etc. for connecting metering transformers to service mains shall be provided by the customer. (Refer to Paragraph 602.1)

602.5 For installations having switchboards, the metering transformers may be mounted in the switchboard bus, provided they are accessible for changing and testing. Metering transformers shall be mounted on the source side of the main switch.

602.6 Meters and test switches may be mounted on a suitable unhinged panel adjacent to the metering transformer enclosure.

602.7 No device other than a Company-owned or Company-approved device shall be placed into the meter socket.

603. Meter-Switch-Fuse Wiring Sequence

For all secondary voltage metering installations the meter, entrance switch and main line fuse or breaker shall be installed in the order named with respect to power flow. All circuits downstream from the meter shall have proper overcurrent protection devices. A customer-owned main service switch shall be installed on the source side of all 480 volt, self-contained meters. This switch shall be located no closer than three feet either left or right of the meter socket, and the switch cover is sealed by Company.

Date Filed: June 26, 2017

Effective Date: Service rendered on and after August 7, 2017

Issued By: Tamie A. Aberle
Director – Regulatory Affairs
October 14, 2016

Case No.: PU-16-666



Montana-Dakota Utilities Co.

A Division of MDU Resources Group, Inc.

400 N 4th Street
Bismarck, ND 58501

State of North Dakota Electric Rate Schedule

NDPSC Volume 4

2nd Revised Sheet No. 58.22

Canceling 1st Revised Sheet No. 58.22

ELECTRIC SERVICE RULES AND REGULATIONS Rate 110

Page 23 of 32

604. Meter Locations

604.1 Each meter shall be located outdoors in a place of convenient access where it will not create a hazard. The location shall be agreed upon by the customer's representative and the Company. (Refer to Figure 1.)

604.2 Meters shall be located so that there is not less than 3 feet of unobstructed space, from the ground up, in front of the meter so that the center line of the meter is not less than 4 feet nor more than 5 feet above the floor, ground, or permanent platform from which the reading will be taken. On group installations, the minimum height is 2 feet - 6 inches and the maximum is 6 feet. The minimum center spacing between meter sockets shall be 7 ½ inches horizontally and 8 ½ inches vertically.

604.3 Meter Sockets shall be permanently mounted on secure structures such as houses, buildings, poles, etc. All required conduit will be provided by customer. (Refer to Figures 1, 2, and 3.)

604.4 Enclosures shall not be placed over the meter socket unless approved by the Company.

605. Indoor Metering

Meters shall be located outdoors as noted in Paragraph 604.1. However, depending on the circumstance and after consulting with the Company, locating the meters indoors may be approved on a case by case basis. Where approved, indoor meters for multiple dwellings, large office buildings, etc. shall be grouped and located as near the service entrance location as practicable. In the event such location renders the automatic meter reading equipment ineffective customer will be responsible for costs associated with remedying the situation.

606. Wiring Diagrams

Typical wiring diagrams for various types of self-contained meters are shown on Figure 4. These are subject to change from time to time with advancement in available metering equipment.

607. Labeling

Where two or more meter mounting devices are installed at one location, each shall be labeled so that it may be identified as to the customer served. Electrical contractors are requested and cautioned to check and identify wiring circuits carefully to avoid metering errors due to incorrect circuitry. Permanent (mechanically fastened) engraved plates

Date Filed: June 26, 2017

Effective Date: Service rendered on and after August 7, 2017

Issued By: Tamie A. Aberle
Director – Regulatory Affairs

Case No.: PU-16-666



Montana-Dakota Utilities Co.

A Division of MDU Resources Group, Inc.

400 N 4th Street
Bismarck, ND 58501

State of North Dakota Electric Rate Schedule

NDPSC Volume 4

2nd Revised Sheet No. 58.23

Canceling 1st Revised Sheet No. 58.23

ELECTRIC SERVICE RULES AND REGULATIONS Rate 110

Page 24 of 32

shall be placed on the exterior of the meter base on a non-removable panel.

608. Seals

All meters and all points of access to customer wiring on the source side of the meter will be sealed by the Company. All cabinets and switch boxes, either inside or outside of the building which contain unmetered wires, shall have provisions made for sealing before service will be supplied.

Section 700 - UTILIZATION EQUIPMENT

701. Interfering Loads

Whenever a customer's utilization equipment has characteristics which cause undue interference with the Company's service to other customers, the customer shall provide, at customer's expense, the necessary equipment to prevent or eliminate such interference. The Company may install and maintain at the customer's expense the necessary equipment to eliminate such interference if it deems it advisable. When a customer's equipment or method of operation causes such interference and the customer does not correct the condition after being so requested by the Company, the Company reserves the right to discontinue the electric service, following written notification of its intent to do so; and service will not be re-established until the conditions complained of have been corrected.

702. Voltage Flicker and Harmonics

702.1 The Company uses the latest revision of the IEEE Standard 141 as the guideline for the maximum allowable voltage flicker that can be caused by a customer's load as measured at the point of metering. This guideline refers to the momentary dip in voltage that may result from the customer's operation of switches, starting of motors, etc.

702.2 Customer's electric load shall comply with the recommendations within Section 10 of the latest revision of the IEEE Standard 519 "Recommended Practices & Requirements for Harmonic Control in Electric Power Systems" at the point of metering connection.

703. Power Factor

Whenever the customer's utilization equipment is of such characteristics as to produce a low power factor, the Company reserves the right to require the customer to raise such power factor, at the customer's expense, or to pay additional charges as provided in

Date Filed: June 26, 2017

Effective Date: Service rendered on and after August 7, 2017

Issued By: Tamie A. Aberle
Director – Regulatory Affairs

Case No.: PU-16-666



Montana-Dakota Utilities Co.

A Division of MDU Resources Group, Inc.

400 N 4th Street
Bismarck, ND 58501

State of North Dakota Electric Rate Schedule

NDPSC Volume 4

2nd Revised Sheet No. 58.24

Canceling 1st Revised Sheet No. 58.24

ELECTRIC SERVICE RULES AND REGULATIONS Rate 110

Page 25 of 32

certain of the Company's rates on file with the Regulatory Commission of the state wherein the customer is located.

704. X-Ray Equipment

At the option of the Company, x-ray equipment may be separately metered and/or supplied from separate transformers.

705. Electric Welders

Electric welding apparatus shall require special arrangements with the Company to determine its ability to serve before installation is made. (Refer to Paragraph 703)

706. Electric Motors

706.1 Motors are normally designed to operate at their rated voltage, plus or minus 10%; thus a 220 volt motor should operate satisfactorily at 208 volts or 240 volts.

706.2 To assure adequate safety to personnel and equipment, the customer shall provide and maintain protective devices in each phase to protect all motors against overloading, short circuits, ground faults and low voltage, and to protect all three-phase motors against single-phasing and phase reversal.

706.3 Motors for use at 120 volts single-phase are limited to locked rotor currents of 25 amperes if started more than 4 times per hour, and 50 amperes if started less frequently.

Motors for use at 208 or 240 volts single-phase will generally be limited to 3 h.p. and a maximum of 4 starts per hour. The Company must be consulted for single-phase motors above 3 h.p. Compensating starting equipment may be required to limit the starting current and when required, shall be furnished by the customer. (Refer to paragraph 702)

706.4 The size of three-phase motors permitted will depend upon the effect starting the motor has upon the customer's system and the Company's other customers in the area. This effect will depend upon the magnitude of the starting current and the frequency of starting. (Refer to Paragraph 702)

When necessary, the customer will be required to reduce the amount of starting current to an acceptable level by installing suitable motor-starting equipment or by using motors designed for smaller starting currents.

Date Filed: June 26, 2017

Effective Date: Service rendered on and after August 7, 2017

Issued By: Tamie A. Aberle
Director – Regulatory Affairs

Case No.: PU-16-666



Montana-Dakota Utilities Co.

A Division of MDU Resources Group, Inc.

400 N 4th Street
Bismarck, ND 58501

State of North Dakota Electric Rate Schedule

NDPSC Volume 4

2nd Revised Sheet No. 58.25

Canceling 1st Revised Sheet No. 58.25

ELECTRIC SERVICE RULES AND REGULATIONS Rate 110

Page 26 of 32

706.5 When more than one motor can start simultaneously, the sum of the maximum starting currents of those motors starting simultaneously and also the sum of their horsepower rating shall be furnished to the Company to determine when reduced voltage starting may be required.

707. Flashing Display Signs

The Company reserves the right to refuse service for "flashing" display signs or display lighting where such service would interfere with voltage regulation of the secondary system.

708. Fluorescent and Gaseous Tube Lighting

High power factor ballasts or transformers must be used for fluorescent, sodium vapor, neon or other gaseous tube lighting equipment. It is required that such equipment operate at a power factor of not less than 90% lagging.

709. Electric Heat Equipment

A customer planning to install resistance type heating, heat pump, electric furnace, electrode boiler, etc. shall consult with the Company, before purchasing the equipment, so that operational modes of this equipment are determined to be acceptable for connection to the Company's distribution system. It is important that consultation is obtained prior to installation of this equipment so the Company can provide adequate capacity to efficiently serve the customer's requirements.

710. Computers and Electronic Equipment

Computers and other sensitive electronic equipment which require high grade, uninterrupted power may, on occasion, experience problems when connected directly to the Company's distribution system. The customer should contact their equipment supplier or consultant to ascertain the need for lightning arresters, surge suppressors, isolation transformers, and standby or uninterruptible power supplies. (Refer to Paragraph 104.2.)

711. Carrier Equipment

The customer shall not impose, or cause to be imposed, any electric signal of any frequency or magnitude upon the Company's distribution system.

Date Filed: June 26, 2017

Effective Date: Service rendered on and after August 7, 2017

Issued By: Tamie A. Aberle
Director – Regulatory Affairs

Case No.: PU-16-666



Montana-Dakota Utilities Co.

A Division of MDU Resources Group, Inc.

400 N 4th Street
Bismarck, ND 58501

State of North Dakota Electric Rate Schedule

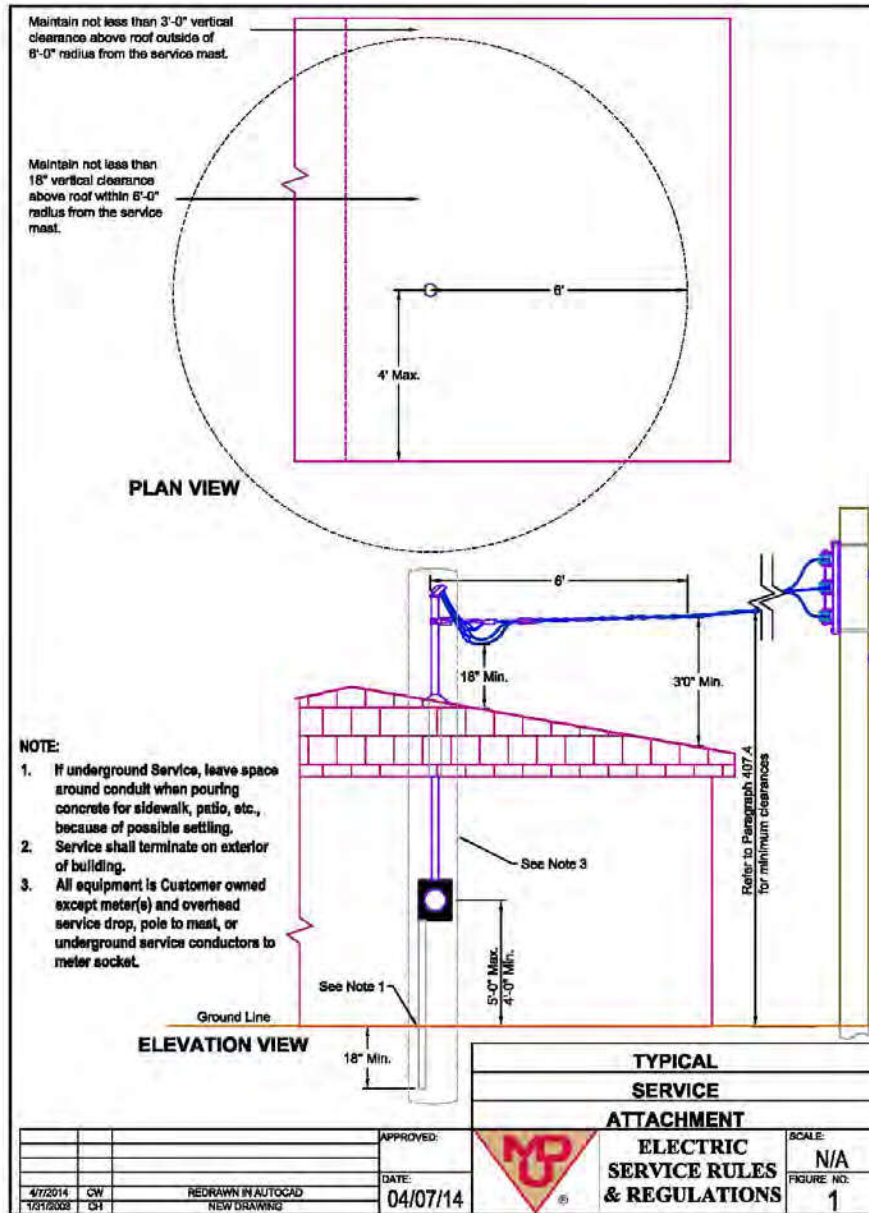
NDPSC Volume 4

2nd Revised Sheet No. 58.26

Canceling 1st Revised Sheet No. 58.26

ELECTRIC SERVICE RULES AND REGULATIONS Rate 110

Page 27 of 32



Date Filed: June 26, 2017

Effective Date: Service rendered on and after August 7, 2017

Issued By: Tamie A. Aberle
Director – Regulatory Affairs

Case No.: PU-16-666



Montana-Dakota Utilities Co.

A Division of MDU Resources Group, Inc.

400 N 4th Street
Bismarck, ND 58501

State of North Dakota Electric Rate Schedule

NDPSC Volume 4

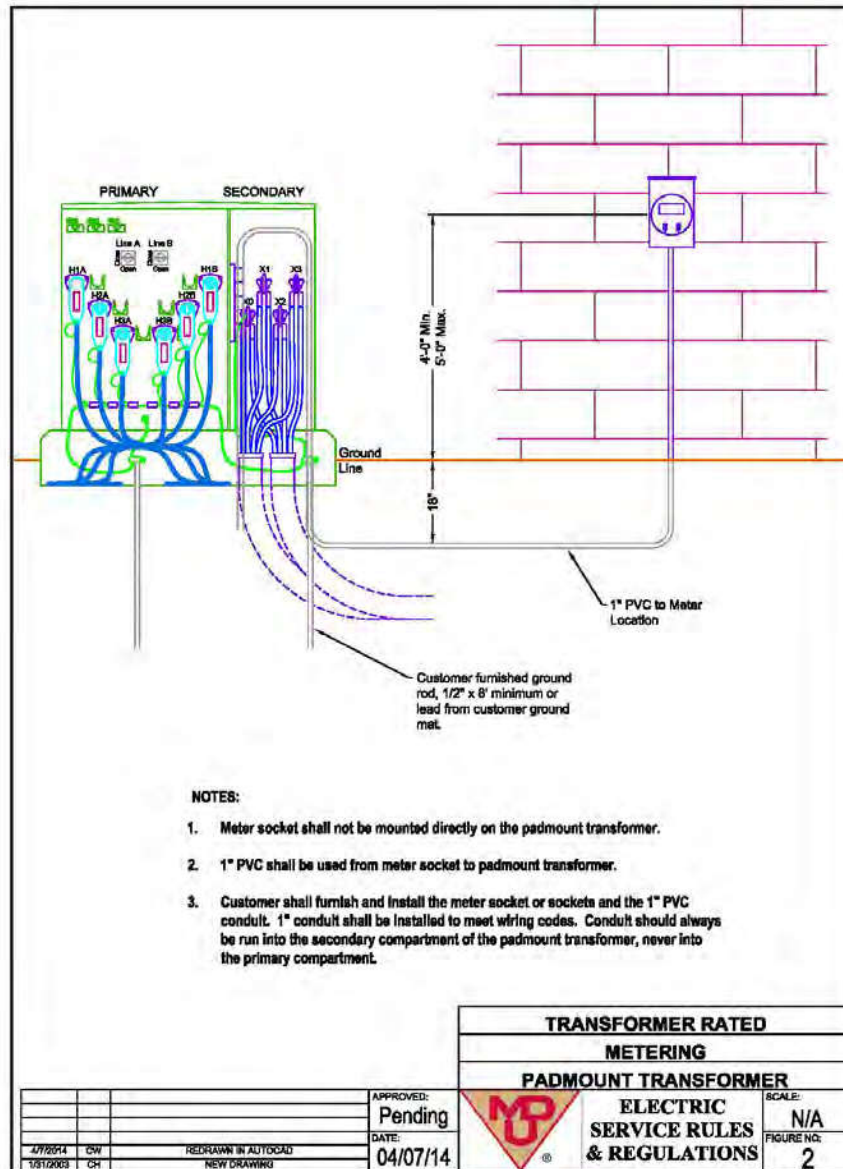
2nd Revised Sheet No. 58.27

Canceling 1st Revised Sheet No. 58.27

TABLE OF CONTENTS

ELECTRIC SERVICE RULES AND REGULATIONS Rate 110

Page 28 of 32



Date Filed: June 26, 2017

Effective Date: Service rendered on and after August 7, 2017

Issued By: Tamie A. Aberle
Director – Regulatory Affairs

Case No.: PU-16-666



Montana-Dakota Utilities Co.

A Division of MDU Resources Group, Inc.

400 N 4th Street
Bismarck, ND 58501

State of North Dakota Electric Rate Schedule

NDPSC Volume 4

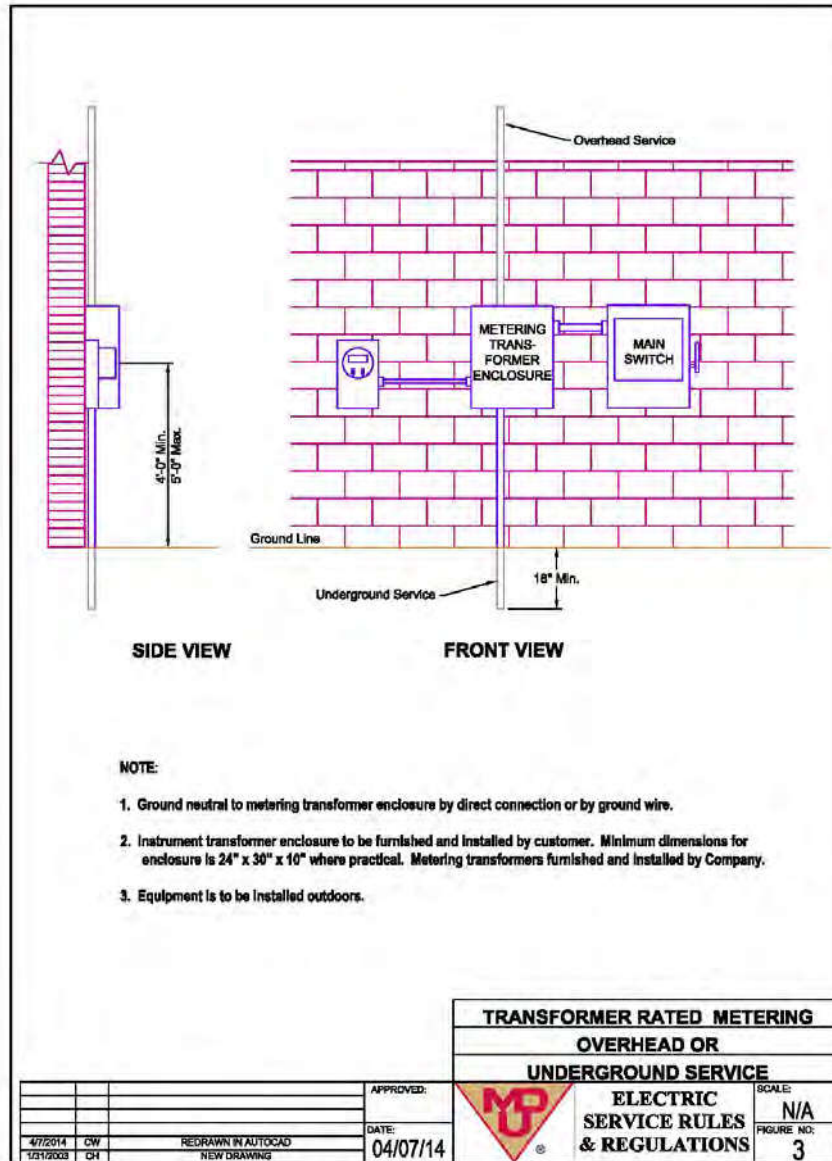
2nd Revised Sheet No. 58.28

Canceling 1st Revised Sheet No. 58.28

TABLE OF CONTENTS

ELECTRIC SERVICE RULES AND REGULATIONS Rate 110

Page 29 of 32



Date Filed: June 26, 2017

Effective Date: Service rendered on and after August 7, 2017

Issued By: Tamie A. Aberle
Director – Regulatory Affairs

Case No.: PU-16-666



Montana-Dakota Utilities Co.

A Division of MDU Resources Group, Inc.

400 N 4th Street
Bismarck, ND 58501

State of North Dakota Electric Rate Schedule

NDPSC Volume 4

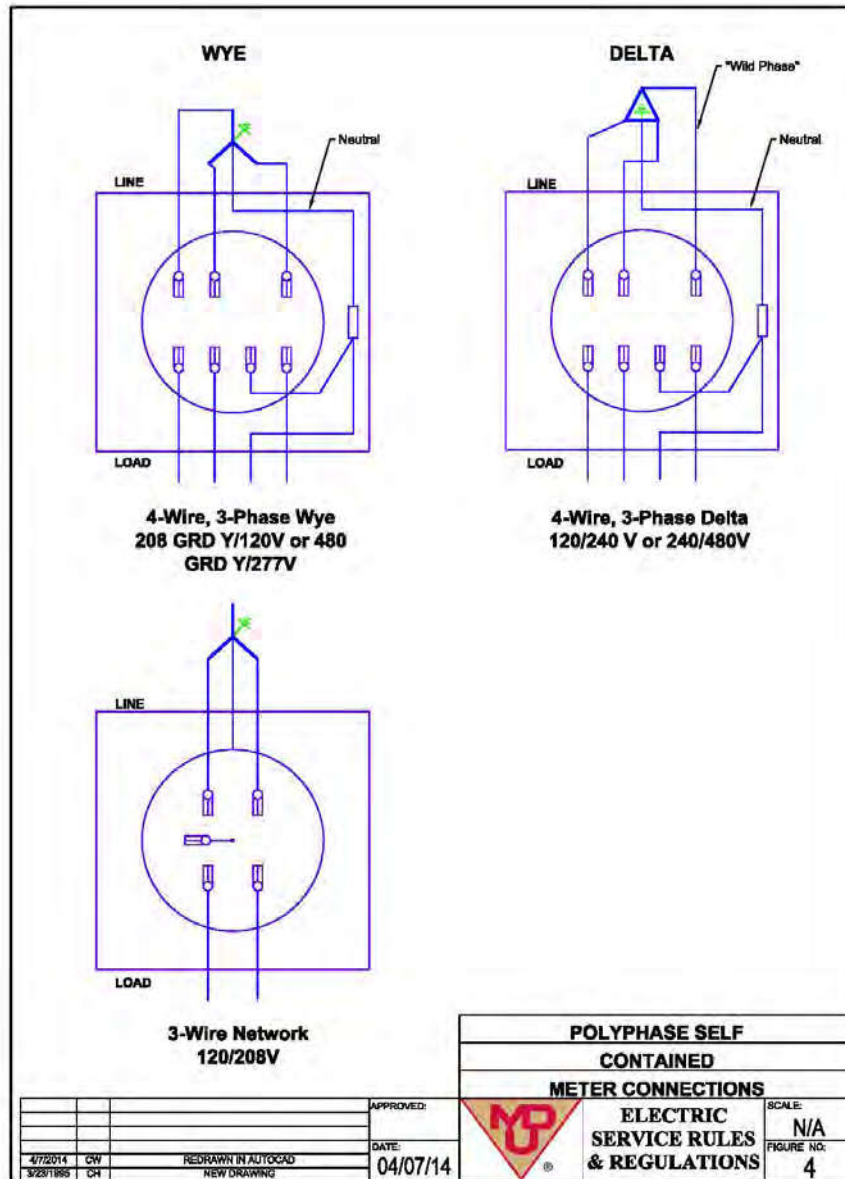
2nd Revised Sheet No. 58.29

Canceling 1st Revised Sheet No. 58.29

TABLE OF CONTENTS

ELECTRIC SERVICE RULES AND REGULATIONS Rate 110

Page 30 of 32



Date Filed: June 26, 2017

Effective Date: Service rendered on and after August 7, 2017

Issued By: Tamie A. Aberle
Director – Regulatory Affairs

Case No.: PU-16-666



Montana-Dakota Utilities Co.

A Division of MDU Resources Group, Inc.

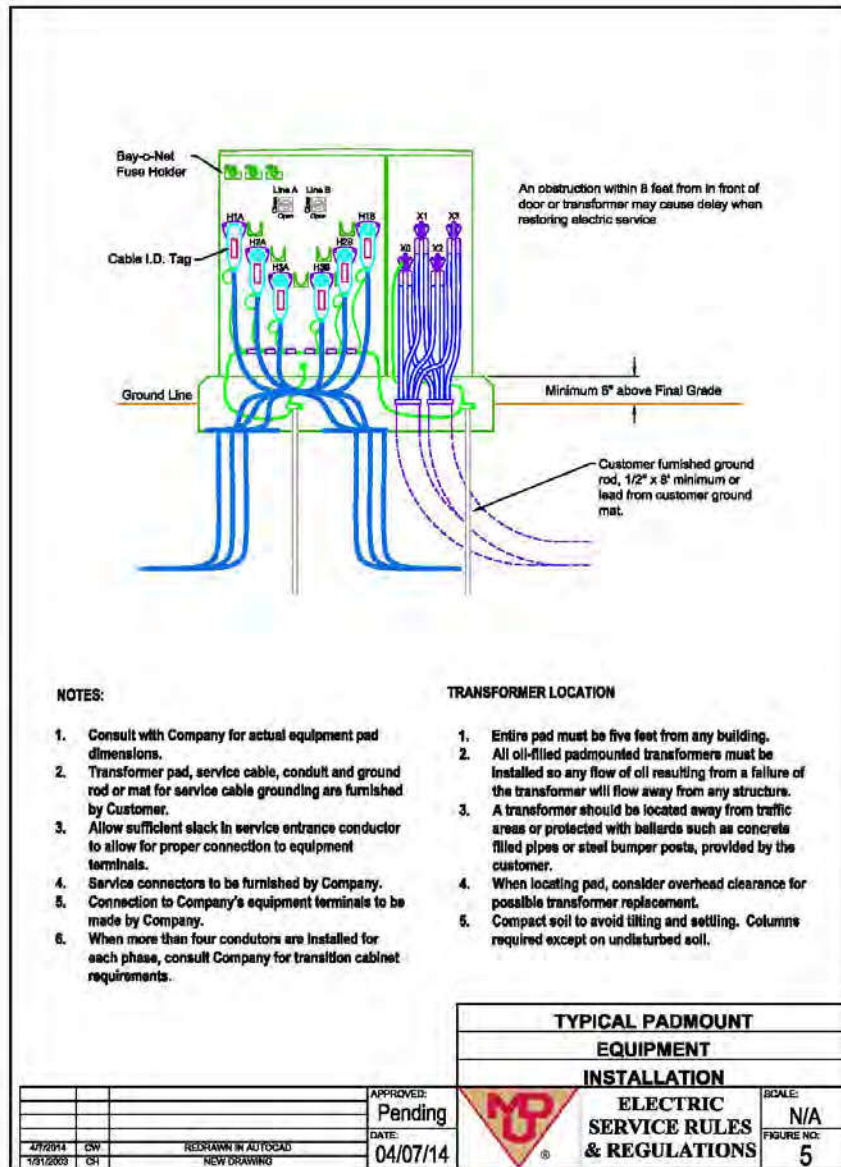
400 N 4th Street
Bismarck, ND 58501

State of North Dakota Electric Rate Schedule

NDPSC Volume 4
2nd Revised Sheet No. 58.30
Canceling 1st Revised Sheet No. 58.30

TABLE OF CONTENTS ELECTRIC SERVICE RULES AND REGULATIONS Rate 110

Page 31 of 32



Date Filed: June 26, 2017

Effective Date: Service rendered on and after August 7, 2017

Issued By: Tamie A. Aberle
Director – Regulatory Affairs

Case No.: PU-16-666



Montana-Dakota Utilities Co.

A Division of MDU Resources Group, Inc.

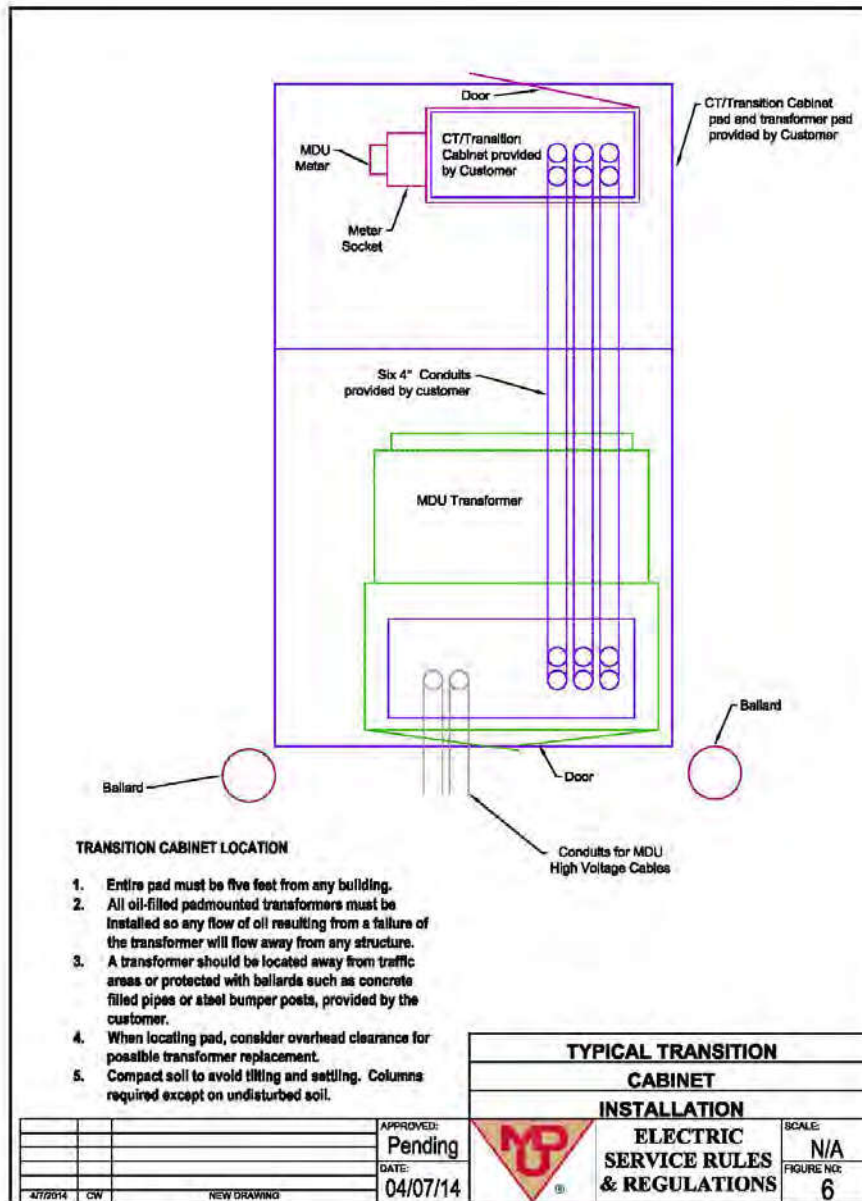
400 N 4th Street
Bismarck, ND 58501

State of North Dakota Electric Rate Schedule

NDPSC Volume 4
Original Sheet No. 58.31

TABLE OF CONTENTS ELECTRIC SERVICE RULES AND REGULATIONS Rate 110

Page 32 of 32



Date Filed: June 26, 2017

Effective Date: Service rendered on and after August 7, 2017

Issued By: Tamie A. Aberle
Director – Regulatory Affairs

Case No.: PU-16-666



Montana-Dakota Utilities Co.

A Division of MDU Resources Group, Inc.

400 N 4th Street
Bismarck, ND 58501

State of North Dakota Electric Rate Schedule

NDPSC Volume 4
Original Sheet No. 60

ELECTRIC EXTENSION POLICY Rate 112

Page 1 of 3

The policy of Montana-Dakota Utilities Co. for electric extensions to provide service to customers located within its service territory is as follows:

1. A permanent extension may be constructed without a contribution if the estimated project construction cost is equal to or less than two times the estimated annual revenue (2 to 1 ratio).
2. If the estimated project construction cost is greater than two times the estimated annual revenue, the extension will be made only with a contribution, which may be refundable.
 - a. Contribution -
 - 1) When a contribution is required of any customer, with the exception of those customers defined in 2) below, the formula for determining the amount of the initial contribution shall be the estimated construction cost less two times the estimated annual revenues.
 - 2) The initial contribution for developers of subdivisions shall be the estimated construction cost.
 - 3) Payment of the initial contribution amount shall be made prior to construction.
 - 4) Upon completion of construction, the contribution amount shall be adjusted to reflect actual construction costs and an additional charge or refund levied accordingly.
 - 5) Company may waive all contributions if it determines that the initial contribution will be soon refunded because of additional customer connections.

Date Filed: January 7, 2004

Effective Date: Service rendered on and
after January 23, 2004

Issued By: Donald R. Ball
Assistant Vice President -
Regulatory Affairs

Case No.: PU-399-03-296



Montana-Dakota Utilities Co.

A Division of MDU Resources Group, Inc.

400 N 4th Street
Bismarck, ND 58501

State of North Dakota Electric Rate Schedule

NDPSC Volume 4
Original Sheet No. 60.1

ELECTRIC EXTENSION POLICY Rate 112

Page 2 of 3

- b. Refund -
- 1) If within a five-year period from the date initial service is established, one or more additional customers are added to the above referred to extension, Company shall recompute the contribution required by combining the estimated proposed construction cost for the new customer(s) with the construction cost to those customers already taking service. If, by so combining the construction costs, the contribution of those customers already taking service would be less, Company shall make a proportionate refund, without interest, to those customers taking service prior to commencement of service to said additional customer(s).
 - 2) Refunds for developers of subdivisions shall be made for each lot connected based on the following calculation: Total refundable contribution divided by the number of lots that can be served from the extension equals refund per lot. In addition, the total revenue of the subdivision will be reviewed annually to determine if adequate revenues are being generated so that the contribution formula would indicate a zero contribution. When this revenue level is reached, a refund will be made to the developer equal to the remaining contribution amount still held by the Company.
 - 3) No refund shall be made by Company to customer(s) or developer after a five-year period from which initial service is established, nor shall refunds be made in excess of the amount contributed.
 - 4) No interest will be paid by Company to customer(s) on any amount customer(s) has paid to Company as a contribution in aid of construction.
3. Project construction cost shall include all cost of the electric extension and overhead cost less the cost of customers' transformer(s), service line, and meter. The service line is considered to be the low voltage conductors between the Company owned transformer or secondary system and the customer owned service entrance equipment.

Date Filed: January 7, 2004

Effective Date: Service rendered on and
after January 23, 2004

Issued By: Donald R. Ball
Assistant Vice President -
Regulatory Affairs

Case No.: PU-399-03-296



Montana-Dakota Utilities Co.

A Division of MDU Resources Group, Inc.

400 N 4th Street
Bismarck, ND 58501

State of North Dakota Electric Rate Schedule

NDPSC Volume 4
Original Sheet No. 60.2

ELECTRIC EXTENSION POLICY Rate 112

Page 3 of 3

4. Electric extension refers to any facilities which must be constructed to connect a new customer to the utility system or the addition of capacity to existing facilities.
5. Company will deliver electricity to customer at the rate approved by the North Dakota Public Service Commission.
6. Where a contribution in aid of construction is required to provide service, such extension is subject to prior execution by customer and Company of Company's standard agreement for extensions.
7. Where abnormal conditions exist, causing extraordinary costs on any part of the extension (e.g., railroad or river crossing, land clearing, special permits, etc.), a charge may be made equal to the additional cost incurred by reason of the abnormal conditions.
8. This rule shall not be construed as prohibiting the Company from making a contract with a customer in a different manner, if the contract provides a more favorable method of extension to the customer. Such determination to be made on the basis of specific extension characteristics.
9. Temporary loads, such as gravel pit operations, carnivals, etc., shall follow the Company rules for temporary services.

Date Filed: January 7, 2004

Effective Date: Service rendered on and
after January 23, 2004

Issued By: Donald R. Ball
Assistant Vice President -
Regulatory Affairs

Case No.: PU-399-03-296



Montana-Dakota Utilities Co.

A Division of MDU Resources Group, Inc.

400 N 4th Street
Bismarck, ND 58501

State of North Dakota Electric Rate Schedule

NDPSC Volume 4
1st Revised Sheet No. 61
Canceling Original Sheet No. 61

Reserved for future use

Date Filed: June 14, 2011

Effective Date: Service rendered on and
after July 22, 2011

Issued By: Tamie A. Aberle
Regulatory Affairs Manager

Case No.: PU-10-124



Montana-Dakota Utilities Co.

A Division of MDU Resources Group, Inc.

400 N 4th Street
Bismarck, ND 58501

State of North Dakota Electric Rate Schedule

NDPSC Volume 4
1st Revised Sheet No. 62
Canceling Original Sheet No. 62

Reserved for future use

Date Filed: June 14, 2011

Effective Date: Service rendered on and
after July 22, 2011

Issued By: Tamie A. Aberle
Regulatory Affairs Manager

Case No.: PU-10-124



Montana-Dakota Utilities Co.

A Division of MDU Resources Group, Inc.

400 N 4th Street
Bismarck, ND 58501

State of North Dakota Electric Rate Schedule

NDPSC Volume 4
1st Revised Sheet No. 62.1
Canceling Original Sheet No. 62.1

Reserved for future use

Date Filed: June 14, 2011

Effective Date: Service rendered on and
after July 22, 2011

Issued By: Tamie A. Aberle
Regulatory Affairs Manager

Case No.: PU-10-124



Montana-Dakota Utilities Co.

A Division of MDU Resources Group, Inc.

400 N 4th Street
Bismarck, ND 58501

State of North Dakota Electric Rate Schedule

NDPSC Volume 4
1st Revised Sheet No. 67
Canceling Original Sheet No. 67

Reserved for future use

Date Filed: June 14, 2011

Effective Date: Service rendered on and
after July 22, 2011

Issued By: Tamie A. Aberle
Regulatory Affairs Manager

Case No.: PU-10-124



Montana-Dakota Utilities Co.

A Division of MDU Resources Group, Inc.

400 N 4th Street
Bismarck, ND 58501

State of North Dakota Electric Rate Schedule

NDPSC Volume 4
Original Sheet No. 68

SELECTIVE TESTING PLAN FOR WATTHOUR METERS Rate 131

Page 1 of 3

A. NEW METERS

A sampling of 5% will be tested at full load and at light load. If any meter is found to be off more than $\pm 1\%$, the entire lot will be tested or rejected.

B. RESIDENTIAL WATTHOUR METERS IN SERVICE

1. A random selection of meters from each vintage class - 1950 to 1959, 1960 to 1969, 1970 to 1979, 1980 to 1989, etc., will be tested annually at full load and light load. The sample size will depend on lot size and will be calculated per Inspection Level V in Military Standards 414 of the Department of Defense.
2. Full load readings will be given a weighting of 4 and light load readings a weighting of 1 to determine the weighted average values of meter accuracies.
3. The criteria for acceptance shall be: at least 96% of the meters shall be not more than plus or minus 2% in error, as determined by the Variability Unknown, Standard Deviation Method described in Military Standards 414 of the Department of Defense.
4. Whenever it is found that less than 96% of the tested meters in a given vintage class fail to meet the requirements of $\pm 2\%$ error limit, the entire vintage class will be tested and adjusted or, if more economic, replaced within a period of four years. In the event the meter type failing the $\pm 2\%$ error limit may be identified, that meter type, regardless of vintage class, will be tested and adjusted or replaced within a period of four years rather than the entire vintage class.

C. COMMERCIAL WATTHOUR METERS

1. A random selection of electro-mechanical meters from each vintage class - 1950 to 1959, 1960 to 1969, 1970 to 1979 and meters manufactured since 1980, will be tested annually at full load and light load. A separate selection of solid state meters from each decade - 1990's, 2000's, etc. will be tested annually at full load and light load. The sample size will depend on lot size and will be calculated per Inspection Level V in Military Standards 414 of the Department of Defense.

Date Filed: January 7, 2004

Effective Date: Service rendered on and
after January 23, 2004

Issued By: Donald R. Ball
Assistant Vice President -
Regulatory Affairs

Case No.: PU-399-03-296



Montana-Dakota Utilities Co.

A Division of MDU Resources Group, Inc.

400 N 4th Street
Bismarck, ND 58501

State of North Dakota Electric Rate Schedule

NDPSC Volume 4
Original Sheet No. 68.1

SELECTIVE TESTING PLAN FOR WATTHOUR METERS Rate 131

Page 2 of 3

2. Full load readings will be given a weighting of 4 and light load readings a weighting of 1 to determine the weighted average values of meter accuracies.
3. The criteria for acceptance shall be: at least 98% of the meters shall be not more than plus or minus 2% in error, as determined by the Variability Unknown, Standard Deviation Method described in Military Standards 414 of the Department of Defense.
4. Whenever it is found that less than 98% of the tested meters in a given vintage class fail to meet the requirements of $\pm 2\%$ error limit, the entire vintage class will be tested and adjusted or, if more economic, replaced within a period of two years. In the event the meter type failing the $\pm 2\%$ error limit may be identified, that meter type, regardless of vintage class, will be tested and adjusted or replaced within a period of four years rather than the entire vintage class.

D. INDUSTRIAL WATTHOUR METERS

1. A random selection of electro-mechanical meters from each vintage class - 1950 to 1959, 1960 to 1969, 1970 to 1979 and meters manufactured since 1980, will be tested annually at full load and light load. A separate selection of solid state meters from each decade - 1990's, 2000's, etc. will be tested annually at full load and light load. The sample size will depend on lot size and will be calculated per Inspection Level V in Military Standards 414 of the Department of Defense.
2. Full load readings will be given a weighting of 4 and light load readings a weighting of 1 to determine the weighted average values of meter accuracies.
3. The criteria for acceptance shall be: at least 99% of the meters shall be not more than $\pm 2\%$ in error at both light load and full load, as determined by the Variability Unknown, Standard Deviation Method described in Military Standards 414 of the Department of Defense.

Date Filed: January 7, 2004

Effective Date: Service rendered on and
after January 23, 2004

Issued By: Donald R. Ball
Assistant Vice President -
Regulatory Affairs

Case No.: PU-399-03-296



Montana-Dakota Utilities Co.

A Division of MDU Resources Group, Inc.

400 N 4th Street
Bismarck, ND 58501

State of North Dakota Electric Rate Schedule

NDPSC Volume 4
Original Sheet No. 68.2

SELECTIVE TESTING PLAN FOR WATTHOUR METERS Rate 131

Page 3 of 3

4. Whenever it is found that less than 99% of the tested meters fail to meet these requirements, the entire vintage class will be tested and adjusted or, if more economic, replaced within two years. In the event the meter type failing the $\pm 2\%$ error limit may be identified, that meter type, regardless of vintage class, will be tested and adjusted or replaced within a period of four years rather than the entire vintage class.

Date Filed: January 7, 2004

Effective Date: Service rendered on and
after January 23, 2004

Issued By: Donald R. Ball
Assistant Vice President -
Regulatory Affairs

Case No.: PU-399-03-296



Montana-Dakota Utilities Co.

A Division of MDU Resources Group, Inc.

400 N 4th Street
Bismarck, ND 58501

State of North Dakota Electric Rate Schedule

NDPSC Volume 4
1st Revised Sheet No. 70
Canceling Original Sheet No. 70

Reserved for future use

Date Filed: June 14, 2011

Effective Date: Service rendered on and
after July 22, 2011

Issued By: Tamie A. Aberle
Regulatory Affairs Manager

Case No.: PU-10-124



Montana-Dakota Utilities Co.

A Division of MDU Resources Group, Inc.

400 N 4th Street
Bismarck, ND 58501

State of North Dakota Electric Rate Schedule

NDPSC Volume 4
1st Revised Sheet No. 70.1
Canceling Original Sheet No. 70.1

Reserved for future use

Date Filed: June 14, 2011

Effective Date: Service rendered on and
after July 22, 2011

Issued By: Tamie A. Aberle
Regulatory Affairs Manager

Case No.: PU-10-124



Montana-Dakota Utilities Co.

A Division of MDU Resources Group, Inc.

400 N 4th Street
Bismarck, ND 58501

State of North Dakota Electric Rate Schedule

NDPSC Volume 4
Original Sheet No. 74

SMALL QUALIFYING FACILITIES (SQF) GENERAL RULES Rate 140

Page 1 of 3

General Rules for Generation:

1. The interconnection between the utility and the qualifying facility will be limited to the service voltage and phases available at the qualifying facility. If different voltages or phases are required, the necessary changes will be provided by the qualifying facility.
2. The power factor and frequency of the qualifying facility shall be such as to not adversely affect the utility system. If corrective devices are required, they will be provided by the qualifying facility.
3. Fault protection equipment shall be provided by the qualifying facility. The utility and qualifying facility shall coordinate protective devices in order to limit damage to each system.
4. The qualifying facility's interconnection shall meet the requirements of local, state and federal codes.
5. The owner of the qualifying facility shall submit equipment specifications as requested by the utility prior to owner's installation of such equipment to assure compatibility and coordination with the utility system.
6. The owner of a qualifying facility will be requested to curtail, interrupt or reduce deliveries of electric energy, in order that the utility may construct, install, maintain, repair, replace, remove or inspect any of its equipment or any part of its system, or if it determines that curtailment, interruption or reduction of delivery is necessary because of safety, emergencies, forced outages or operating conditions on its system. Except in case of emergency, in order to minimize operating problems, the utility and qualifying facility shall give the other reasonable prior notice of any curtailment, interruption or reduction of delivery and its probable duration.
7. The Company reserves the right for periodic inspection of safety devices which are part of the interconnection. This does not affect the responsibility of the qualifying facility to assure the operating safety of the equipment on its side of the interconnection point.

Date Filed: January 7, 2004

Effective Date: Service rendered on and
after January 23, 2004

Issued By: Donald R. Ball
Assistant Vice President -
Regulatory Affairs

Case No.: PU-399-03-296



Montana-Dakota Utilities Co.

A Division of MDU Resources Group, Inc.

400 N 4th Street
Bismarck, ND 58501

State of North Dakota Electric Rate Schedule

NDPSC Volume 4
Original Sheet No. 74.1

SMALL QUALIFYING FACILITIES (SQF) GENERAL RULES Rate 140

Page 2 of 3

8. The Company reserves the right to disconnect any facility that has interconnected without utility authorization.
9. The Company has the right to disconnect and lock-out a qualifying facility's generating equipment with due notice whenever it has been determined that harmonics are being produced or other factors are present which would interfere with communications or otherwise cause degradation of service to other customers. If, in the judgment of the utility, an unsafe condition is created on the utility system by the operation of the qualifying facility the utility shall have the right to disconnect the facility until the cause of such condition is eliminated.
10. In the event of a utility system outage or interruption of service, a qualifying facility's generator shall be capable of automatically disconnecting itself to prevent the utility's line from being energized. Also, a qualifying facility's system shall not be capable of energizing the utility's line when that line is de-energized.
11. A manually operated generator disconnect switch, provided by the owner of a qualifying facility, shall be accessible to utility personnel at all times. Such a switch would be used, whether or not the owner is present to remove the qualifying facility's generator from the line in an emergency situation as determined by utility system conditions.
12. All necessary rights-of-way and easements to install, operate, maintain, replace and remove utility facilities, including adequate access rights are to be furnished by the owner of the qualifying facility on owner's property.
13. The metering shall be adequate to measure energy, or energy and capacity, from the qualifying facility to the utility, from the utility to the qualifying facility, and, if necessary, adequate to determine the time at which energy is transferred from one party to another.
14. If the qualifying facility is located at a site outside of Company service territory and energy is delivered to Company through facilities owned by another utility, energy payments will be adjusted reflecting losses occurring between point of metering and point of delivery.

Date Filed: January 7, 2004

Effective Date: Service rendered on and
after January 23, 2004

Issued By: Donald R. Ball
Assistant Vice President -
Regulatory Affairs

Case No.: PU-399-03-296



Montana-Dakota Utilities Co.

A Division of MDU Resources Group, Inc.

400 N 4th Street
Bismarck, ND 58501

State of North Dakota Electric Rate Schedule

NDPSC Volume 4
Original Sheet No. 74.2

SMALL QUALIFYING FACILITIES (SQF) GENERAL RULES Rate 140

Page 3 of 3

15. In the event the qualifying facility desires wheeling by the Company of its output, arrangements will be made subject to negotiation.
16. A Metering Charge will be assessed the qualifying facility for installation by the Company of additional metering equipment plus operation and maintenance costs.
17. An Interconnection Charge will be assessed for any additional facilities (exclusive of the items included in Metering Charge) or changes in existing facilities to permit interconnection with the Company. Payment shall be a one-time payment.
18. The owner of a qualifying facility will indemnify and save the utility harmless from all loss on account of injury, death or damage to property caused by the qualifying facility unless the injury, death or damage is the direct result of the negligence of the utility.
19. Qualifying facilities shall be required to execute a contract that specifies a one or five-year minimum term depending upon applicable rate schedule and describes the responsibilities, liabilities, ownership of equipment, and location.
20. The owner of a qualifying facility shall obtain and maintain general liability insurance in an amount established by negotiation between the owner of a qualifying facility and the Company.
21. Qualifying facilities with generating capacity greater than 1000 Kw, or operating as a base loaded unit regardless of size, will require individual negotiation.

Date Filed: January 7, 2004

Effective Date: Service rendered on and
after January 23, 2004

Issued By: Donald R. Ball
Assistant Vice President -
Regulatory Affairs

Case No.: PU-399-03-296