



WESTMORELAND BEULAH MINING LLC
A Subsidiary of WESTMORELAND MINING LLC

August 17, 2022

Ms. Zanna Brinkman
Director, Reclamation Division
Public Service Commission
600 E. Boulevard Ave. Dept. 408
Bismarck, ND 58505-0480

Permit ID: KRSB-8603
Subject: NOV 2201- Pond 113 Design Drawing

Dear Ms. Brinkman,

Westmoreland Beulah Mining (WBM) respectfully submits the enclosed design drawing for Pond 113 related to Notice of Violation #2201. The certification of Pond 113 will be submitted upon completion of pond construction as communicated in correspondence from WMB dated July 22, 2022, regarding the switch in order of construction of Pond 112 and Pond 113.

If you have any questions regarding this submittal, please contact me at 406-533-5891 or by electronic mail at nore@westmoreland.com.

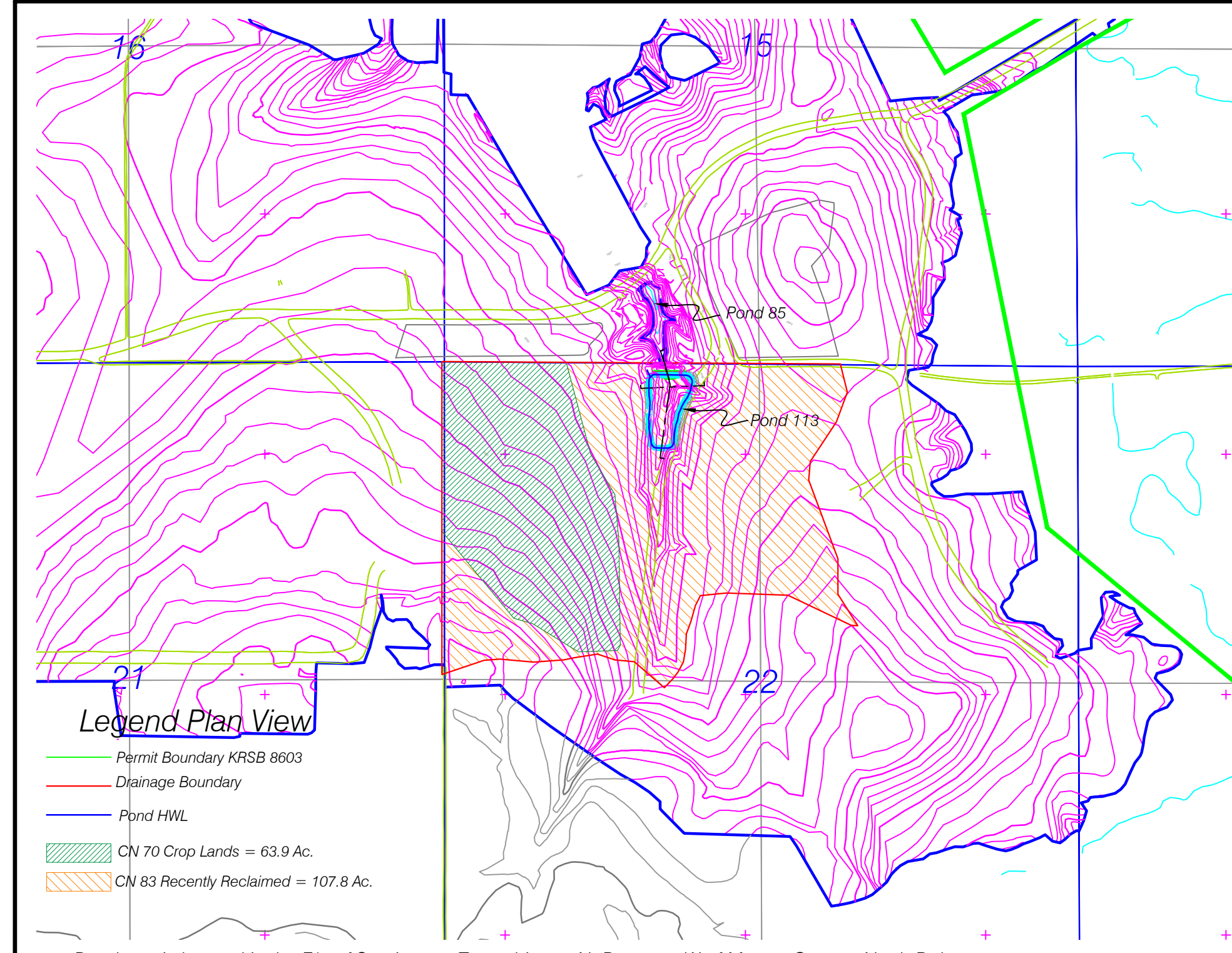
Sincerely,

Nettie Ore
Manager, Environmental & Regulatory Affairs
Westmoreland Mining LLC

Encl: Pond 113 Postmining Conditions Design Drawing

Cc: Jonathan Emmer, ND-PSC (electronic copy)
Jesse Noel, WBM
David Traverso, WBM

9 RC-22-228 Filed 08/17/2022 Pages: 2
Letter enclosing Pond 133 Design Drawing - electronic only
Westmoreland Beulah Mining LLC
Nettie Ore



Pond 113 is located in the E/2 of Section 22, Township 143N, Range 88W of Mercer County, North Dakota
 Contours shown in magenta are the postmining elevations as shown on Exhibit 3.5.3.

Scale 1"=1000'

Pond 113 Area-Capacity Table

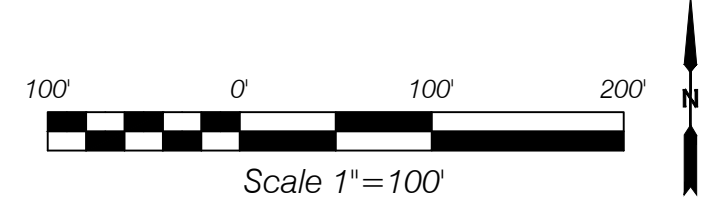
Elevation (ft)	Area (acres)	Cum. Capacity (ac-ft)
1955	2.80	0.0
1956	2.91	2.9
1958	3.13	8.9
1960	3.35	15.4
1962	3.58	22.3
1963	3.70	25.9

Principal Spillway
 Emergency Spillway

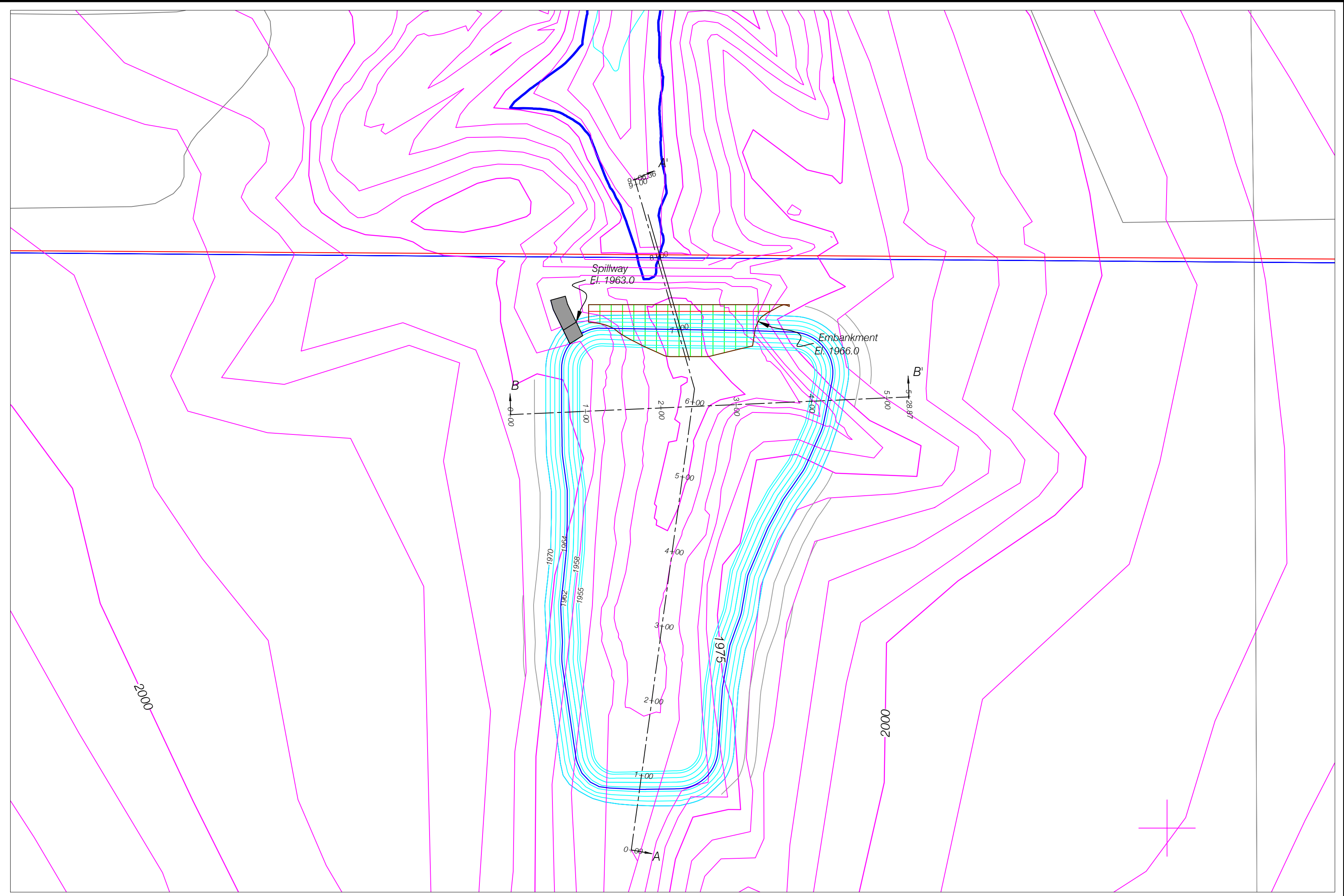
Hydrologic Design Storm Calculations For Pond 113

Design Event	Drainage Area (acres)	Watercourse Length (feet)	Elevation Difference (ft)	Precip. (in)	Peak Inflow (cfs)	Runoff Volume (ac-ft)
10-Yr, 24-Hr	171.7	2192	90	3.14	129.2	14.5
25-Yr, 6-Hr	408.2	2192	90	2.70	159.7	23.8

Note: Peak inflows for this structure were calculated by SEDCAD program.
 Annual sediment yield into this pond is 0.63 ac-feet.
 For the spillway design, the combined drainage area was determined by direct runoff

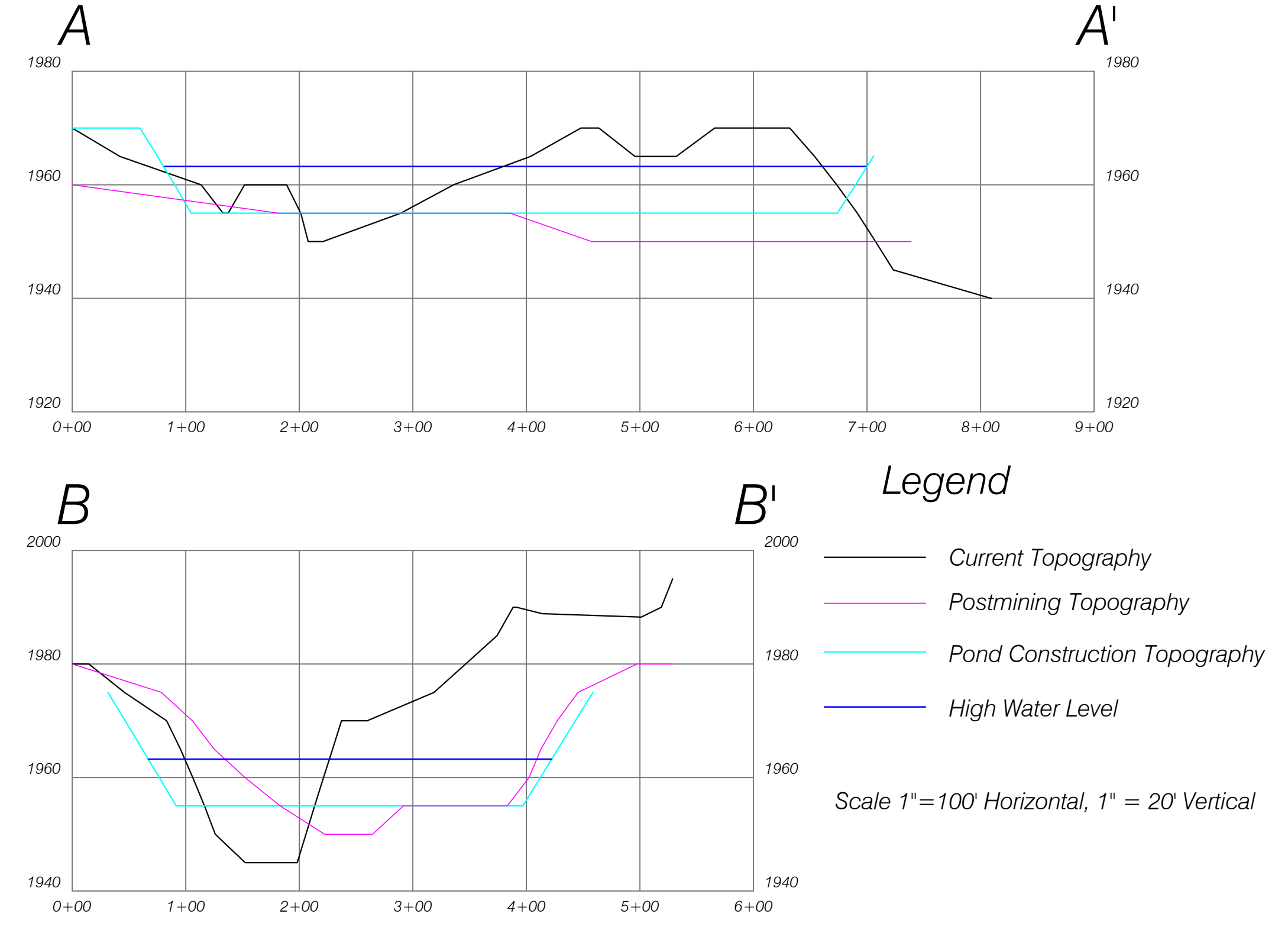


- Pond Detail Legend**
- Pond Contour Minor
 - Pond HWL
 - Postmining Contour, Major
 - Postmining Contour, Minor
 - Cross-Section Location
 - Disturbance Boundary

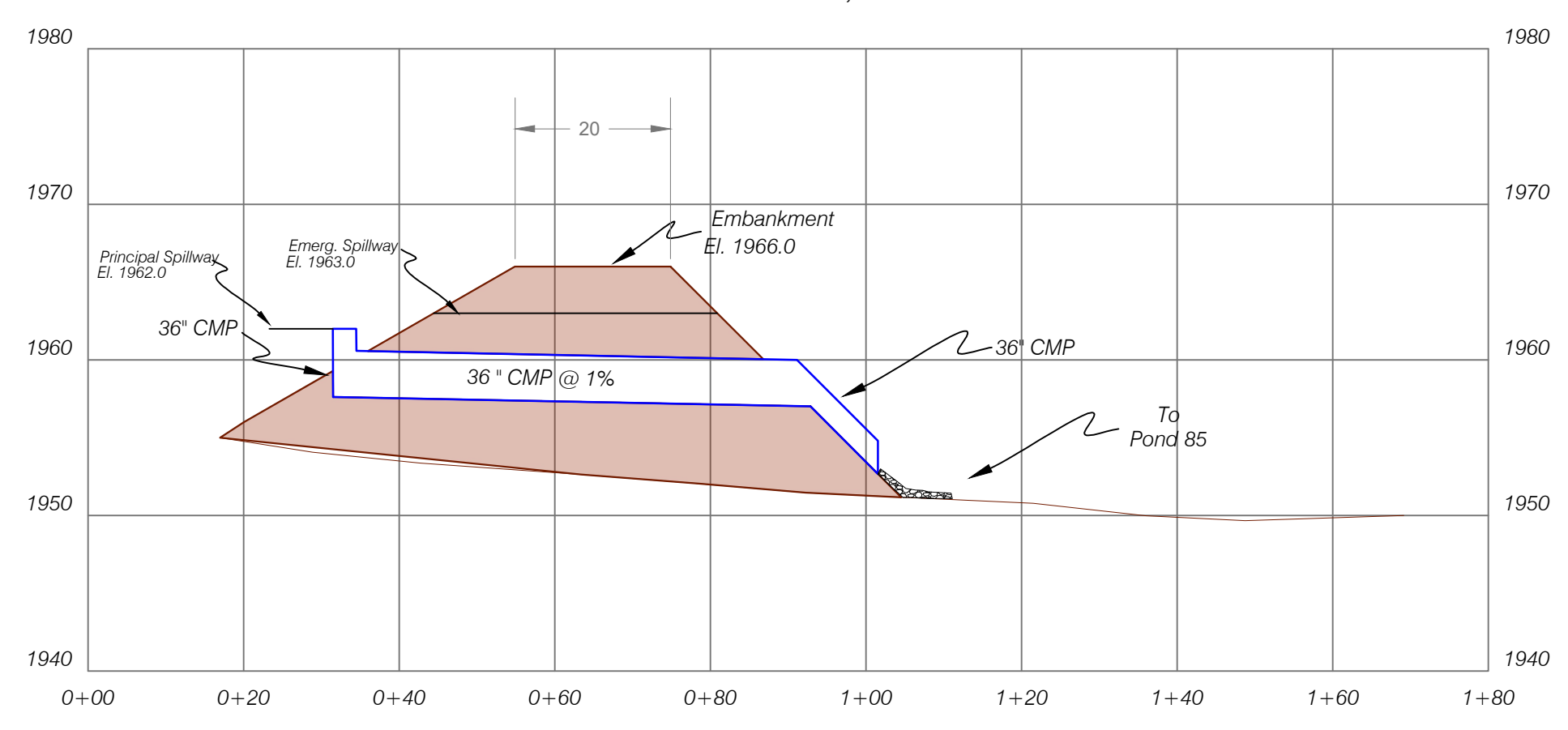


Pond 113 Detail

Cross-Sections Through Impoundment



Detail A - Through Embankment



Note: Pond 113 must be maintained at or below a water level of 1957.60 to maintain the required storage to contain the 10 year, 24 hour runoff event.

Pond 113 Postmining Conditions Exhibit 3.2.71

DRAWN ESI	DATE 6/26/2021	LOCATION 6204 13th Street SW Beulah, ND 58523
APPROVED	DATE 4/11/2021	
SCALE As Noted	SHEET 1 Permit KRSB 8603	PROJECT NO. Pond 113 062122 (004).dwg