

THE COYOTE CREEK MINING COMPANY

2021 Annual Map Summary Sheet

2021

1. Acreage Affected

NACC-1302 65.50 acres

**2. Suitable Plant Growth Material
Completely Removed**

NACC-1302 114.92 acres

**3. Surface Coal Mining
Operations Completed**

NACC-1302 116.13 acres

4. Grade Approval

NACC-1302 114.03 acres

**5. Suitable Plant Growth Material
Completely Respread**

NACC-1302 119.52 acres

THE COYOTE CREEK MINING COMPANY

2021 Annual Map Summary Sheet

	<u>2021</u>	<u>Cumulative</u>
6. Native Grassland Delayed Seeding		
NACC-1302	82.98 acres	222.87 acres
7. Planting Where the 10-Year Revegetation Period Has Been Initiated		
NACC-1302	36.54 acres	75.13 acres
8. Bond Partially Released and Release Stage		
NACC-1302	0.00 acres	0.00 acres
9. Total Bond Release		
NACC-1302	0.00 acres	0.00 acres

THE COYOTE CREEK MINING COMPANY

2021 SPGM REPLACEMENT AREA MAP
SUMMARY SHEET

PERMIT NACC-1302

TOPSOIL REPLACEMENT ACREAGES

Landowner

Mixing Agreements ¹	1,449.84
Gunsch	41.68
Schwalbe	2.11
State	28.27
Otter Tail	76.22

SUBSOIL REPLACEMENT ACREAGES

Landowner

Mixing Agreements ¹	1,237.95
Gunsch	32.17
Schwalbe	0.54
State	23.68
Otter Tail	65.12

¹ Surface ownership includes Coyote Creek Mining Company (CCMC), Voigt, and State of North Dakota lands located south of County Road 12, where CCMC has a mixing agreement with all of the above owners. CCMC does not have a mixing agreement on lands north of County Road 12, including State land in Section 8, T143N, R88W, or with Schwalbe, Gunsch and Otter Tail et al.

TOPSOIL

Pile Number	Cubic Yards	Date Seeded	Location		Ownership ¹	Comments
1	50,660	Fall 2014	SE4 Sec 30	143/88	CCMC/Mix	
3	2,749	Fall 2014	SE4 Sec 30	143/88	CCMC/Mix	
5	3,181	Summer 2015	SW4 Sec 24	143/89	CCMC/Mix	
7	-	COY-003	NE4 Sec 31	143/88	CCMC/Mix	
9	498,039	Fall 2018	SW4 Sec 30	143/88	CCMC/Mix	
11	42,281	Fall 2019	SE4 Sec 10	143/88	Otter Tail	
13	743,014 ²	Fall 2021	NW4 Sec 30	1433/88	CCMC/Mix	part active
15	56,537	Fall 2015	NW4 Sec 19	143/88	CCMC/Mix	
17	68,637	Fall 2015	W2/NE4 Sec 18	143/88	Gunsch	
19	13,166	Fall 2015	NE4 Sec 18	143/88	Gunsch	
21	2,898	Fall 2015	SE4 Sec 7	143/88	Schwalbe	
23	31,544	Fall 2015	SW4 Sec 8	143/88	State	
25	21,884	Fall 2015	SE4 Sec 8	143/88	State	
27	22,662	Fall 2015	SW4 Sec 9	143/88	Otter Tail	
29	35,954	Fall 2015	SW4/SE4 Sec 9	143/88	Otter Tail	
31	12,862	Fall 2015	SE4 Sec 9	143/88	Otter Tail	
33	432,963	Summer 2018	SW4 Sec 19 SE4 Sec 24	143/88 143/89	CCMC/Mix	
35	4,991	Fall 2015	SE4 Sec 24	143/89	CCMC/Mix	
37	22,044	Fall 2015	SW4 Sec 10	143/88	Otter Tail	
39	366,499	Fall 2020	SW4 Sec 31	143/88	CCMC/Mix	
41	368,235	Fall 2020	SW4 Sec 36	142/89	CCMC/Mix	sprayed 2021
43	17,539	Fall 2018	NW4 Sec 25	143/89	CCMC/Mix	
45	6,429	Fall 2019	NE4 Sec 36	143/89	CCMC/Mix	sprayed 2021
47	793	Fall 2020	SE4 Sec 6	142/88	CCMC/Mix	
49	93,489	Fall 2021	NW4 Sec 6	142/88	CCMC/Mix	sprayed 2021
51	48,089	Fall 2021	NE4 Sec 7	142/88	CCMC/Mix	
53	98	Fall 2021	NE4 Sec 7	142/88	CCMC/Mix	

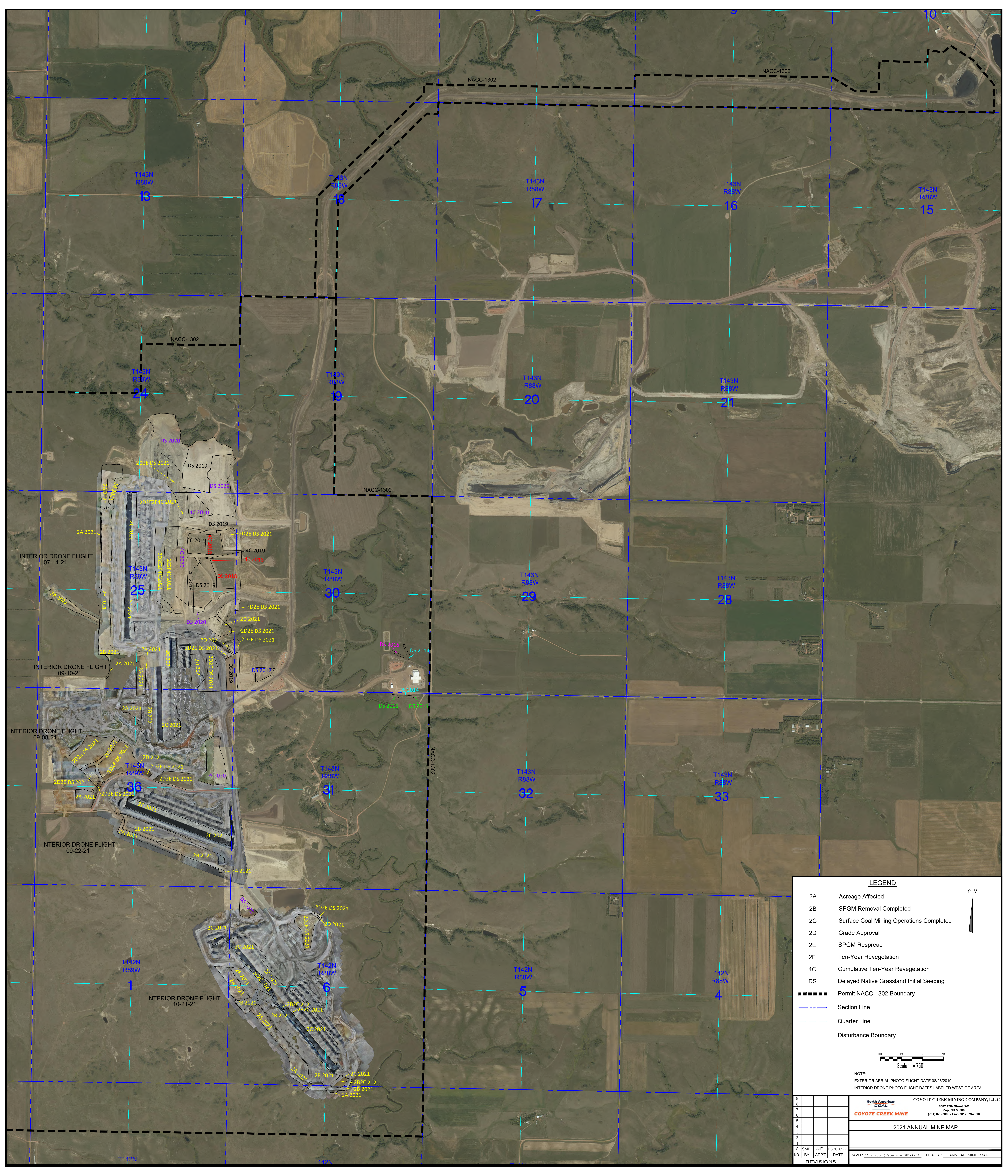
¹ CCMC/Mix refers to CCMC or others with whom CCMC has a mixing agreement. Others include Voigt and State of North Dakota.

² Pile volume updated based on survey completed 10/22/21. No activity has been conducted since time of survey.

SUBSOIL

Pile Number	Cubic Yards	Date Seeded	Location		Ownership ¹	Comments
2	13,811	Fall 2014	SE4 Sec 30	143/88	CCMC/Mix	
4	15,151	Fall 2014	SE4 Sec 30	143/88	CCMC/Mix	
6	577,101	Fall 2018	SW4 Sec 30	143/88	CCMC/Mix	part active
8	63,141	Fall 2016	SE4 Sec 10	143/88	Otter Tail	
10	88,332	Fall 2016	E2 Sec 19	143/88	CCMC/Mix	
12	1,189,993	Fall 2020	W2 Sec 30	143/88	CCMC/Mix	
14	31,922	Fall 2016	SW4 Sec 18	143/88	Gunsch	
16	62,178	Fall 2016	NE4 Sec18	143/88	Gunsch	
18	47,885	Fall 2016	Sec 7, 8, 18	143/88	State	
20	1,582,742	Summer 2018	Sec 19, 30	143/88	CCMC/Mix	
22	31,995	Fall 2016	SE4 Sec 8	143/88	State	
24	23,913	Fall 2016	SE4 Sec 9	143/88	Otter Tail	
26	58,519	Fall 2016	SE4 Sec 9	143/88	Otter Tail	
28	6,287	Fall 2015	SW4 Sec 30	143/88	CCMC/Mix	
30	10,445	Fall 2016	SE4 Sec 24	143/89	CCMC/Mix	
32	8,945	Fall 2016	SE4 Sec 30	143/88	CCMC/Mix	
34	921	Fall 2016	NE4 Sec 18	143/88	Schwalbe	
36	987,312	Fall 2021	SW4 Sec 31	143/88	CCMC/Mix	
38	499	Fall 2017	SW4 Sec 24	143/89	CCMC/Mix	
40	6,148	Fall 2018	SW4 Sec 24	143/89	CCMC/Mix	
42	339,769	Fall 2018	NW4 Sec 36	142/89	CCMC/Mix	
44	18,713	Fall 2017	S2 Sec 24	143/89	CCMC/Mix	
46	15,582	Fall 2018	NW4 Sec 25	143/89	CCMC/Mix	
48	12,606	Fall 2018	NW4 Sec 25	143/89	CCMC/Mix	
50	14,474	Fall 2019	E2 Sec 6	142/88	CCMC/Mix	
52	235,114	Fall 2020	SW4 Sec 36	143/89	CCMC/Mix	sprayed 2021
54	93,970		SW4 Sec 36	143/89	CCMC/Mix	mulched 2021-part active

¹ CCMC/Mix refers to CCMC or others with whom CCMC has a mixing agreement. Others include Voigt and State of North Dakota.



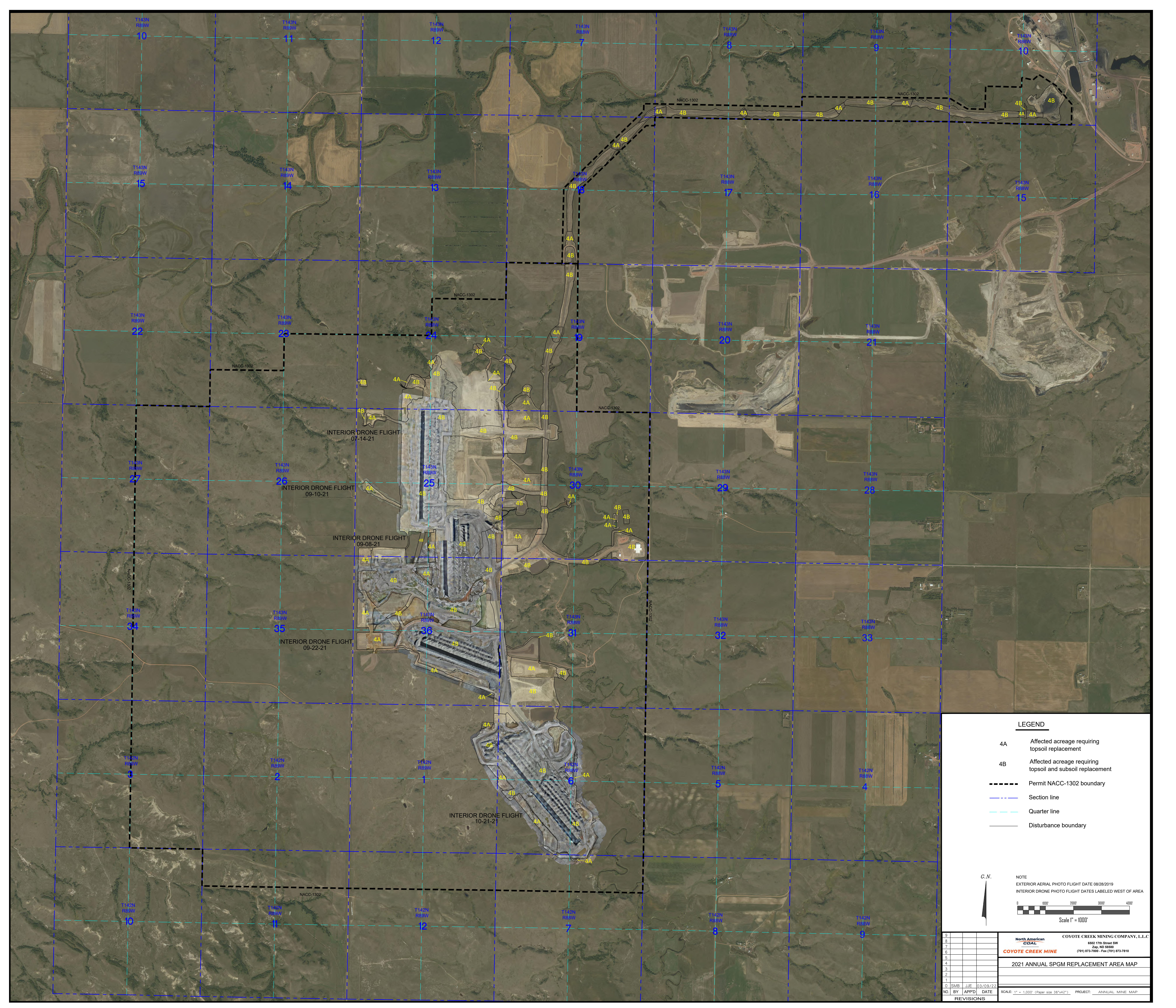
LEGEND

- 2A Acreage Affected
- 2B SPGM Removal Completed
- 2C Surface Coal Mining Operations Completed
- 2D Grade Approval
- 2E SPGM Respread
- 2F Ten-Year Revegetation
- 4C Cumulative Ten-Year Revegetation
- DS Delayed Native Grassland Initial Seeding
- Permit NACC-1302 Boundary
- Section Line
- Quarter Line
- Disturbance Boundary

Scale 1" = 750'

NOTE:
EXTERIOR AERIAL PHOTO FLIGHT DATE 08/28/2019
INTERIOR DRONE PHOTO FLIGHT DATES LABELED WEST OF AREA

9		North American	COYOTE CREEK MINING COMPANY, L.L.C.
8		COAL	4602 17th Street SW
7			Zip: ND 58588
6		COYOTE CREEK MINE	(701) 873-7800 - Fax (701) 873-7810
5			
4			
3			
2			
1			
0	SMB	JJE	03/03/22
NO.	BY	APPD.	DATE
SCALE: 1" = 750' (Paper size 36"x42") PROJECT: ANNUAL MINE MAP			
REVISIONS			

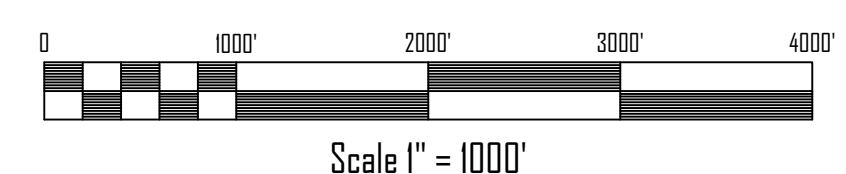


LEGEND

- 4A Affected acreage requiring topsoil replacement
- 4B Affected acreage requiring topsoil and subsoil replacement
- Permit NACC-1302 boundary
- - - Section line
- - - Quarter line
- Disturbance boundary

C.N.

NOTE
 EXTERIOR AERIAL PHOTO FLIGHT DATE 08/28/2019
 INTERIOR DRONE PHOTO FLIGHT DATES LABELED WEST OF AREA



9									
8									
7									
6									
5									
4									
3									
2									
1									
0	SMB	JUE	03/09/22						
NO.	BY	APPD	DATE						
REVISIONS									

North American COAL
 COYOTE CREEK MINE
 6502 17th Street SW
 Zap, ND 58580
 (701) 873-7900 Fax (701) 873-7910

2021 ANNUAL SPGM REPLACEMENT AREA MAP

SCALE: 1" = 1,000' (Paper size 36"x42") PROJECT: ANNUAL MINE MAP

