

TEN-YEAR PLAN



Grand Forks, North Dakota

Prepared for the North Dakota Public Service Commission
Pursuant to Section 49-22-04 of the
North Dakota Century Code

MPC
RATES, LOAD AND PLANNING DEPARTMENT

July 2022

TABLE OF CONTENTS

	Page Number
INTRODUCTION	3
SECTION A: Existing Energy Conversion Facilities	4
SECTION B: Energy Conservation Facilities Under Construction	4
SECTION C: Proposed Energy Conversion Facilities on Which Construction Is Intended Within the Ensuing Five Years	4
SECTION D: Proposed Energy Conversion Facilities During the Next Ten-Year Time Period	5
SECTION E: Existing Transmission Facilities (Electric)	5
SECTION F: Existing Transmission Facilities (Pipeline)	5
SECTION G: Proposed Transmission Facilities on Which Construction Is Intended Within the Ensuing Five Years (Electric)	5
SECTION H: Proposed Transmission Facilities on Which Construction Is Intended Within the Ensuing Five Years (Pipeline)	6
SECTION I: Proposed Transmission Facilities During the Next Ten-Year Time Period (Electric and Pipeline)	6
SECTION J: Regional Coordination	6
SECTION K: Environmental Information	7-8
SECTION L: Projected Demand for Service	9
EXHIBIT I: U.S. Department of Energy Form EIA-923	
EXHIBIT II: Federal Energy Regulatory Commission Form FERC-714	
EXHIBIT III: Minnkota Electric System Maps	

MINNKOTA POWER COOPERATIVE, INC.

TEN-YEAR PLAN

INTRODUCTION

Minnkota Power Cooperative, Inc. (Minnkota) was organized on March 28, 1940 and incorporated under the laws of the State of Minnesota. It is the wholesale electric power supplier for 11 rural electric cooperatives located in the eastern one-third of North Dakota and the northwestern part of Minnesota. Minnkota serves approximately 136,000 end-use customers in a 34,500 square mile service area that includes 33 counties in the Red River Valley and adjoining areas.

Minnkota owns and operates the Milton R. Young 1 plant, a 250,000 kW lignite-fired steam generator located near Center, North Dakota, Minnkota owns or leases another 34,000 kW of smaller diesel units located throughout its service area. Minnkota schedules a firm allocation of 109,000 kW with the Western Area Power Administration on behalf of Minnkota and NMPA. Minnkota, as operating agent for the Northern Municipal Power Agency (NMPA), which consists of 12 municipals, 10 located in northwestern Minnesota and two located in eastern North Dakota, also operates NMPA's 128,100 kW from NMPA's share of Coyote plant output.

Minnkota purchases 375,000 kW from Square Butte Electric Cooperative's Milton R. Young 2 plant. On December 31, 2009 Square Butte Electric Cooperative sold its 463 mile \pm 250 kilovolt D.C. transmission line to Minnesota Power. As part of the sale of the D.C. line, Minnkota began receiving an increasing allocation of Young 2 electrical output through a separate Purchase Power Agreement with Minnesota Power, beginning in mid-2014 when a new 345 kV transmission line from Center to Grand Forks was completed. Minnkota's allocation, currently at 50% from Square Butte Electric Cooperative and 32.0% from Minnesota Power, will increase in varying increments until 2026, at which point Minnkota will receive 100 percent of the electrical energy produced by Young 2.

Minnkota's wind portfolio consists of owned turbines, two 900 kW wind turbines, one located near Valley City and one located near Petersburg, North Dakota, as well as a mix of 20 and 25-year Purchase Power Agreements for a total of 468,130 kW. The Purchase Power Agreements are comprised of 139,500 kW from wind located near Langdon, ND, 229,380 kW from wind projects located near Pillsbury, ND, and a more recent Purchase Power Agreement from Oliver Wind III, placed into service January 1, 2017, as a 25-year Power Purchase Agreement for 99,250 kW from a wind project located west of Center, ND.

SECTION A: Existing Energy Conversion Facilities

1. See Exhibit I

OTP will be responsible for Form EIA-923 for the Coyote facilities.

SECTION B: Energy Conversion Facilities Under Construction

None

SECTION C: Proposed Energy Conversion Facilities on Which Construction is Intended Within The Ensuing Five Years

Minnkota's largest generation resource continues to be the Milton R. Young Station. Recognizing the ever increasing pressure on utilities to reduce carbon dioxide (CO₂) emissions, Minnkota has been leading the development of Project Tundra. The goal of Project Tundra is to install carbon capture and storage technologies at the Young Station to capture and permanently store the CO₂ more than a mile underground in geologic formations. The carbon capture system will utilize Fluor Corporation's Econamine FG PlusSM technology and will be sized to capture more than 90% of the CO₂ emissions from Unit 2. A total of about 4 Million tonnes/year of CO₂ would be captured and permanently sequestered from the atmosphere, which is the equivalent of permanently removing about 800,000 vehicles from the road.

Another driver for Minnkota's pursuit of Project Tundra is to create a new benchmark – a large-scale demonstration at an existing plant that can be commercially and economically replicated across the region, the country, and the world. Minnkota recognizes that carbon regulations present a longer-term risk to maintaining affordable and reliable resources that emit CO₂. If constructed, Project Tundra could help provide continued reliability and affordability of electricity from the power plant, while also preserving prior plant infrastructure investment. Using a technology-driven solution can help to reduce risk to our member-owners given the uncertainty of future CO₂ regulations.

Project Tundra has received important bi-partisan support, and has partnered with federal and State of North Dakota partners to advance its research and development. Leveraging state and federal funding, the Project Tundra team has now completed the Front-End Engineering & Design, or FEED study for the carbon capture system. Additional studies of optimizations and potential cost-saving opportunities are expected to continue through the end of 2022. The Class VI CO₂ storage facility achieved final permitting through the ND Division of Mineral Resources, and was granted final approval by the ND Industrial Commission on January 21, 2022.

Minnkota continues to seek outside investment in the project, entities that can harness applicable tax credits for carbon capture projects, so that the financial risk to Minnkota members can be limited. Presently, Project Tundra is expected to result in ~530 MW net of near "zero carbon" power for sale to our members with limited or

no increase in cost, while still enabling continued use of North Dakota’s abundant, reliable and low-cost lignite coal resources as well as ensuring the capital investment in the Young Station can continue to be utilized. More details of Project Tundra can be found at www.projecttundrand.com

SECTION D: Proposed Energy Conversion Facilities During the Next Ten-Year Time Period
None

SECTION E: Existing Transmission Facilities (Electric)

Minnkota’s North Dakota Electric transmission facilities¹ are listed in the table below. See Exhibit III for a map of Minnkota’s transmission facilities.

Minnkota does not have plans to retire any transmission facilities in the ensuing ten years.

Transmission Line	Voltage (kV)	AC/DC	In Service Dates	Notes
Wahpeton - Frontier - Maple River	230	AC	1968	Tapped by Frontier Substation in 2007
Maple River - Winger	230	AC	1970	6.3 mi. in ND, rest in MN
Prairie - Winger	230	AC	1970	9.2 mi. in ND, rest in MN
Prairie - Drayton	230	AC	1970	
Center 230 - Square Butte	230	AC	1971	
Center 230 – Rough rider - Mandan	230	AC	1971	Tapped by Roughrider substation in 2016
Center - Jamestown (Fried)	345	AC	1981	Center-Maple River line originally completed in 1970 at 230 kV. Uprated to 345 kV in 1981.
Jamestown (Fried) - Buffalo	345	AC	1981	
Buffalo - Bison - Maple River	345	AC	1981	Tapped by Bison Substation in 2014
Pillsbury - Maple River	230	AC	2008	
Center - Prairie (CGF)	345	AC	2014	

SECTION F: Existing Transmission Facilities (Pipeline)

None

SECTION G: Proposed Transmission Facilities on Which Construction is Intended Within the Ensuig Five Years

Minnkota does not have any other defined plans for construction of 230 kV transmission in North Dakota. However, a number of plans are in development for improvement of Minnkota’s 69 and 115 kV transmission, which will benefit the cost,

¹ See definition of Electric transmission facility in North Dakota Century Code 49-22.

and/or reliability of service to North Dakota customers. A number of other ideas are included to meet various needs such as aging infrastructure, blink mitigation, long term outage risk, and transmission tariff costs. Some of those alternatives include tapping the 115 kV and 230 kV systems to provide new sources to lower voltage transmission.

SECTION H: Proposed Transmission Facilities on Which Construction is Intended Within the Ensuing Five Years (Pipeline)

Minnkota does not have plans for constructing proposed pipeline transmission facilities in the next five years.

SECTION I: Proposed Transmission Facilities during the Next Ten-Year Time Period (Electric and Pipeline)

Minnkota does not have additional plans for proposed Transmission Facilities beyond the next five years.

SECTION J: Regional coordination

Minnkota participates heavily in a variety of regional transmission planning and operating coordination groups and organizations. Descriptions of some of Minnkota's primary coordination venues are listed below.

- Midcontinent Independent System Operator (MISO): In 2015, Minnkota signed multiple agreements with MISO under which MISO now provides various planning coordination, tariff administration, and operating services to Minnkota. These agreements deepened an already healthy and mutually beneficial relationship between the parties. The services provided under these agreements replace services previously provided to Minnkota through the Midcontinent Area Power Pool, which was dissolved by its members in 2015, as well as other contractors. Minnkota also receives reliability coordination services from MISO and is a MISO market participant.
 - Specific to its role as a Planning Coordinator, MISO provides an open forum for Minnkota to submit planned transmission projects through the MISO Transmission Expansion Planning (MTEP) process. The projects receive independent evaluation by MISO and are presented in Sub-regional Planning Meetings (SPM) and on MISO's website, both of which are open and available to the public. The meetings are well attended by many of Minnkota's neighboring transmission owners, as well. More information on the SPM meetings and the MTEP process can be found at www.misoenergy.org.
- Midwest Reliability Organization (MRO): Minnkota is a member of the MRO, which is a non-profit organization of regional utilities established to develop regional reliability standards and ensure compliance with standards of the North American Electric Reliability Corporation (NERC) as well as its own. Further information about MRO is available on-line at

www.midwestreliability.org.

- Manitoba Hydro US Coordinating Committee (MHCC): Minnkota is a member of the MHCC, which is comprised of the owners of the Manitoba Hydro – US transmission interface. The MHCC is responsible for various tasks related to the interface including transmission studies, operating procedures, review of modifications, transfer capability determination, and protection system coordination. Minnkota also participates in various working groups which report to the MHCC.
- Minnkota Ad Hoc Coordination: Minnkota actively manages queues for customers requesting the interconnection of new large generators and for transmission service reservations over Minnkota’s transmission system. All studies are distributed to and reviewed by ad hoc groups which are formed for the purpose of reviewing those studies. Those ad hoc groups include neighboring utilities and Regional Transmission Organizations (RTOs) such as MISO and Southwest Power Pool (SPP). Minnkota also participates in ad hoc review of studies performed by its neighboring transmission service providers.
- Minnesota Transmission Owners (MTO): Minnkota is a sponsoring utility for the MTO group, which is a collaborative effort between a number of Minnesota-based utilities and three Minnesota government agencies. The group fulfills the utilities’ statutory obligations for transmission planning in the state of Minnesota. These obligations include the development of the Minnesota Biennial Transmission Plan, as well as studies associated with Minnesota mandates regarding generation portfolio requirements. Further information about the MTO group is available at www.minnelectrans.com.
- Minnkota also participates actively in many committees and working groups which are hosted by MISO, SPP, MRO, the North American Transmission Forum (NATF), and others.

SECTION K: Environmental information

Minnkota is a borrower from the Rural Utilities Services of Washington, D.C. In accordance with national policy, the policies, plans, and programs of the Rural Utilities Services and its borrowers are conducted so as to meet national environmental goals in accordance with Federal and State requirements.

The Rural Utilities Services includes in its loan contracts, a provision to the effect that the borrower shall observe all applicable Federal and State requirements for the protection of the environment. Environmental Statements are required by the Rural Utilities Services in connection with all loans and other agency actions that will significantly affect the environment.

For all of Minnkota's transmission lines of 230 kV and above, knowledgeable consultants prepare an environmental analysis. This analysis is the basis for routing transmission lines in accordance with Federal and State guidelines.

These guidelines are also used in routing lower voltage transmission lines, although lower voltage lines are usually quite short and therefore, have a lesser impact on the environment. It is Minnkota's policy to route transmission lines in such a location as to cause the least amount of damage and interference to the private landowner while at the same time selecting a route that is in the best interest of the general public.

Minnkota cooperates with other area electric utilities so that its high voltage transmission lines are portions of joint projects. This significantly reduces the total number of miles of transmission line otherwise required to be constructed. In the actual route selection, attempts are made to follow the established criteria and to place the lines in such a manner as to be the least visible to the general public. This includes such things as, where feasible, avoiding heavily traveled roads, screening road crossings, and placing the line behind hills or trees. Special wildlife areas and other formally classified areas are avoided in line routing.

Minnkota cooperates with State and Federal agencies in the route selection process. These agencies review and comment on the Environment Impact Statement. Private land use and potential use is considered to either avoid irrigable areas or place the structures in such a way that they will cause the least interference to irrigation. Transmission line structures are placed in non-tillable areas where possible and span lengths are maximized to reduce the total number of structures to cause the least interference to irrigation and other farming activities.

Environmental considerations are placed in their proper perspective along with such other vital factors such as service reliability, cost, and safety. Minnkota considers all these factors in constructing, operating, and maintaining its electric transmission system.

SECTION L: Projected demand for service

1. Minnkota's 2012 peak demand was 882,109 kW as compared to the 2022 peak demand of * 993,533 kW. Minnkota has projected a 2032 peak demand of 1,071,490 kW. Minnkota also has a load control program to flatten and or shift demand peaks. In the winter Minnkota can shed up to 385 kW and in the summer up to 85 kW.
2. Minnkota's generating capacity presently installed or committed plus firm contract commitments are as follows:

	<u>MPC share nameplate</u>	<u>MISO accredited capacity factor</u>	<u>MISO accredited capacity kW</u>
Western Area Power Administration (including reserves)	109,000	100.0%	109,000
Milton R. Young 1	250,000	96.0%	240,000
Milton R. Young 2 (Minnkota share)	375,000	89.0%	333,000
Coyote (NMPA share)	128,100	85.0%	108,900
Miscellaneous Generators	34,000	100.5%	34,200
Petersburg Wind	900	21.5%	200

Valley City Wind	900	21.5%	200
Langdon Wind PPA	99,000	21.5%	21,300
Langdon Wind II PPA	40,500	21.5%	8,700
Ashtabula PPA- I	99,000	21.5%	21,300
Ashtabula PPA - II	49,500	21.5%	10,600
Ashtabula II PPA	69,000	21.5%	14,800
**Oliver III PPA	<u>99,250</u>	<u>21.5%</u>	<u>21,300</u>
	1,354,150		924,300

Minnkota has adequate generating capacity to serve its forecasted peak demands over the next 10-year time frame.

3. Minnkota's load centers are the three distribution cooperatives in eastern North Dakota and the eight distribution cooperatives in northwestern Minnesota.

Minnkota coal resources will last for at least 70 years with the present level of generation. There are no transportation problems since all the base loaded plants are mine mouth plants.

* Minnkota 2022 Miso load peak (year to date)

EXHIBIT I

U.S. Department of Energy Form EIA-923
(Supersedes U.S. Department of Energy Form EIA-767)
(Supersedes FERC Form 67)

NOTICE: This report is mandatory under the Federal Energy Administration Act of 1974 (Public Law 93-275). Failure to comply may result in criminal fines, civil penalties and other sanctions as provided by law. For further information concerning sanctions and data protections see the provision on sanctions and the provision concerning confidentiality of information in the instructions. **Title 18 USC 1001 makes it a criminal offense for any person knowingly and willingly to make to any Agency or Department of the United States any false, fictitious, or fraudulent statements as to any matter within its jurisdiction.**

SCHEDULE 1. IDENTIFICATION

Is this a regulated utility plant

Yes No

Is this a combined heat and power plant

Yes No

Enter the total plant efficiency of the combined heat and power plant

%

Survey Contact

Contact Landon Schneider Submit Date 14-MAR-22
Title Accountant
Address 5301 32nd Avenue South
City/State/Zip Grand Forks ND 58201
Email lschneider@minnkota.com Phone (701) 795-4262 Fax

Supervisor of Contact Person for Survey

Contact Kay Schraeder
Title Accountant
Address 5301 32nd Avenue South
City/State/Zip Grand Forks ND 58201
Email kschraeder@minnkota.com Phone (701) 795-4266 Fax (701) 795-4215

Report For

Company Name Minnkota Power Coop, Inc
Plant Name Milton R Young
Plant ID 2823 Plant County Oliver
Plant Address 3401 24th Street S.W.
Plant City Center Plant State ND

For contact detail go to <http://www.eia.doe.gov/oss/forms.html#eia-923>

SCHEDULE 6. NONUTILITY ANNUAL SOURCE AND DISPOSITION OF ELECTRICITY

(Instructions for SCHEDULE 6 are on page 13)

SCHEDULE 6 collects calendar year data (no monthly detail).

Report all generation in **megawatthours (MWh)** rounded to a whole number.

- | | |
|--------------------------------|-------------------------------------------|
| (1) Gross Generation (Annual) | (4) Station Use |
| (2) Other Incoming Electricity | (5) Direct Use |
| | (6) Total Facility Use (4 + 5) |
| | (7) Retail Sales to Ultimate Customers |
| | (8) Sales for Resale (MWh) |
| | (9) Provided Tolling Agreement (MWh) |
| | (10) Other Outgoing Electricity |
| (3) Total Sources (1 + 2) | (11) Total Disposition (6 + 7 + 8+ 9+ 10) |

Total Sources must equal Total Disposition (3 = 11)

Plants that cannot separate Station Use and Direct Use may enter zero in Station Use and the sum of Station Use and Direct Use in the Direct Use field.

Types of Other Incoming Electricity
List all of the types of incoming electricity included in (2)
Other Incoming Electricity

Types of Other Outgoing Electricity
List all of the types of outgoing electricity in item (10)
Other Outgoing Electricity

SCHEDULE 7. PART A. ANNUAL REVENUES FROM SALES FOR RESALE TOAL

Complete Schedule 7, Part A, only if a positive value was entered on Schedule 6, Item (8): "Sales for Resale."

Sales for Resale are energy supplied to electric utilities, cooperatives, municipalities, federal and state elecctyic agencies, power marketers, or other entities, for resale to end-use consumers.

Report in thousand dollars. For example \$1,987,234 should be entered as 1,987

Annual Revenues from Sales for Resale (in thousand dollars)

SCHEDULE 7. PART B. ANNUAL RETAIL SALES, REVENUES AND NUMBER OF CUSTOMERS FROM RETAIL SALES

Report by state and end-use customer sectors (Residential, Commercial, industrial and Transportation).

Complete an individual Schedule 7, Part B, for each state where customers are located, only if a positive value was entered on Schedule 6, Item (7), "Retail Sales to Ultimate Customers."

Annual Retail Sales, Revenue, and Number of Customers:

- Retail sales are sold directly to an end-use customer (i.e., the energy is consumed by the customer, onsite, and is not resold to other customers).
- Enter annual retail sales, revenue, and number of customers for each state where customer(s) are located.
- Report Annual Retail Sales in megawatthours (Mwh), by sector.
- Report Annual Revenue in thousand dollars, by sector.
- Report Number of Customers, by sector.

State					
Items	Residential	Commercial	Industrial	Transportation	Total
Retail Sales (Mwh)					
Revenue (\$ 000's)					
Number of Customers					

SCHEDULE 8. PART B. FINANCIAL INFORMATION RELATED TO COMBUSTION BY-PRODUCTS

Complete an individual Schedule 8, Part B, annually, for each organically fueled thermoelectric power plant with a total steam turbine capacity greater than, or equal to, 100 megawatts.

- Data reported in Schedule 8, Part B must correspond to the combustion by-product data reported on Schedule 8, Part A.
- If actual data are not available, provide an estimate value.
- Report all values in thousand dollars, to the nearest thousand.

Operation and Maintenance (O&M) Expenditures During Year (Thousand Dollars)

Type	(1) Fly Ash	(2) Bottom Ash	(3) Flue Gas Desulfurization	(4) Water Pollution Abatement	(5) Other Pollution Abatement	(6) Total (1 + 2 + 3 + 4 + 5)
Collection	1,290	1,348	12,794	472	0	15,904
Disposal	770	798	1,272	20	0	2,860
Other						

Capital Expenditures for New Structures and Equipment During Year, Excluding Land and Interest Expense (Thousand Dollars)

Type	(7) Air Pollution Abatement	(8) Water Pollution Abatement	(9) Solid/Contained Waste	(10) Other Pollution Abatement
Amount	266	12	0	0

Byproduct Sales Revenue During Year (Thousand Dollars)

Type	(11) Fly Ash	(12) Bottom Ash	(13) Fly and Bottom Ash Sold Intermingled	(14) Flue Gas Desulfurization	(15) Other Byproduct Revenue	(16) Total (11+12+13+14+15)
Amount	0	254	0	0	0	254

SCHEDULE 8. PART C. AIR EMISSIONS CONTROL INFORMATION

Annual Operations

Environmental Equipment and/or Technology Type					Status	Hours in Service	NOx Emission Rate (lbs/MMBtu)		Particulate Matter Control				Sulfur Dioxide Control				Mercury Control		Acid Gas Control
Types	PM Control ID	SO2 CONTROL ID	NOX Control ID	Mercury Control			Entire Year	May through September	Emission Rate (0.01 lb/MMBtu)	Removal Efficiency Rate at AOF	Tested Efficiency Particulate Removal (at 100% Load)	Test Date MM-YYYY	Removal Efficiency Rate at AOF	Removal Tested Efficiency (at 100% Load)	Test Date MM-YYY	Quantity of FGD Sorbent Used (nearest 0.1 thousand tons)	FGD Unit Electrical Energy Consumption	Removal Efficiency (nearest 0.1% by weight)	Emission Rate (0.01 lbs / Tbtu)
SP		FGD1		MC1	OP	7335							98.6	12-2020	15	10856	3.27		
SP		FGD2		MC2	OP	8111							94.3	12-2020	32	27692.5	3.26		

FGD Operation and Maintenance Expenditures During Year, Excluding Electricity (Thousand Dollars)

Flue Gas Desulfurization Unit ID	Feed Materials and Chemicals	Land and Supervision	Waste Disposal	Maintenance, Material and All Other Costs	Total
FGD1	\$2,885	\$806	\$445	\$635	\$4,771
FGD2	\$6,241	\$1,030	\$827	\$998	\$9,096

SCHEDULE 8. PART D. COOLING SYSTEM INFORMATION, MONTHLY OPERATIONS

Complete an individual Schedule 8, Part D for each thermoelectric power plant (organically fueled, nuclear and combined cycle) with a total steam capacity greater than, or equal to, 100 megawatts.

- **Complete a separate schedule for each reporting month.**
- Complete a separate row for each cooling system.
- If actual data are not available, provided an estimated value.
- If the source of cooling water is a well or municipal water system, do not complete the Cooling Water Temperature sections.

Cooling System ID	Cooling System Type	Cooling System Status	Annual Amt of Hours Chlorine in added to Service Per Water (1000 lbs)	Average Monthly Rate of Cooling Water (to nearest 0.1 gallons per minute)				Cooling Water Temperature (degrees Fahrenheit)					Volume Cooling Water (to nearest 0.001 million gallons per month)						
				Div	Withdrawal	Discharge	Consumption	Method of Measure	Avg at Intake	Max at Intake	Avg at Discharge	Max at Discharge	Method of Measure	Div	Withdrawal	Discharge	Consumption		
Report Month 1																			
CS1	OC	OP	611	.547	0	96920	96920	0	4	49	56	64	91	1	0	3553.6	3553.6	0	
Report Month 2																			
CS1	OC	OP	336	.389	0	53290	53290	0	4	48	55	81	93	1	0	1074.3	1074.3	0	
Report Month 3																			
CS1	OC	OP	372	1.045	0	58921	58921	0	4	56	66	86	101	1	0	1313.3	1313.3	0	
Report Month 4																			
CS1	OC	OP	360	.511	0	59000	59000	0	4	58	66	89	103	1	0	1274.4	1274.4	0	
Report Month 5																			
CS1	OC	OP	655	.967	0	103858	103858	0	4	69	78	86	107	1	0	4080.6	4080.6	0	
Report Month 6																			
CS1	OC	OP	720	1.793	0	118000	118000	0	4	80	87	97	105	1	0	5097.6	5097.6	0	

SCHEDULE 8. PART D. COOLING SYSTEM INFORMATION, MONTHLY OPERATIONS

Complete an individual Schedule 8, Part D for each thermoelectric power plant (organically fueled, nuclear and combined cycle) with a total steam capacity greater than, or equal to, 100 megawatts.
 - **Complete a separate schedule for each reporting month.**
 - Complete a separate row for each cooling system.
 - If actual data are not available, provided an estimated value.
 - If the source of cooling water is a well or municipal water system, do not complete the Cooling Water Temperature sections.

Cooling System ID	Cooling System Type	Cooling System Status	Annual Hours of Service Per month	Annual Amt of Chlorine added to Cooling Water (1000 lbs)	Average Monthly Rate of Cooling Water (to nearest 0.1 gallons per minute)				Cooling Water Temperature (degrees Fahrenheit)					Volume Cooling Water (to nearest 0.001 million gallons per month)				
					Div	Withdrawal	Discharge	Consumption	Method of Measure	Avg at Intake	Max at Intake	Avg at Discharge	Max at Discharge	Method of Measure	Div	Withdrawal	Discharge	Consumption
Report Month 7																		
CS1	OC	OP	744	2.073	0	118000	118000	0	4	87	93	106	113	1	0	5267.5	5267.5	0
Report Month 8																		
CS1	OC	OP	744	2.223	0	118000	118000	0	4	84	94	103	114	1	0	5267.5	5267.5	0
Report Month 9																		
CS1	OC	OP	244	.999	0	39982	39982	0	4	79	84	89	101	1	0	585.2	585.2	0
Report Month 10																		
CS1	OC	OP	118	.207	0	18719	18719	0	4	57	61	66	83	1	0	132.6	132.6	0
Report Month 11																		
CS1	OC	OP	697	1.201	0	114150	114150	0	4	53	63	70	85	1	0	4770.4	4770.4	0
Report Month 12																		
CS1	OC	OP	744	1.038	0	118000	118000	0	4	50	59	67	77	1	0	5267.5	5267.5	0

SCHEDULE 8. PART D. COOLING SYSTEM INFORMATION, MONTHLY OPERATIONS

Complete an individual Schedule 8, Part D for each thermoelectric power plant (organically fueled, nuclear and combined cycle) with a total steam capacity greater than, or equal to, 100 megawatts.
 - **Complete a separate schedule for each reporting month.**
 - Complete a separate row for each cooling system.
 - If actual data are not available, provided an estimated value.
 - If the source of cooling water is a well or municipal water system, do not complete the Cooling Water Temperature sections.

Cooling System ID	Cooling System Type	Cooling System Status	Annual Amt of Hours Chlorine in added to Service Per month (1000 lbs)	Average Monthly Rate of Cooling Water (to nearest 0.1 gallons per minute)						Cooling Water Temperature (degrees Fahrenheit)					Volume Cooling Water (to nearest 0.001 million gallons per month)			
				Div	Withdrawal	Discharge	Consumption	Method of Measure	Avg at Intake	Max at Intake	Avg at Discharge	Max at Discharge	Method of Measure	Div	Withdrawal	Discharge	Consumption	
Report Month 1																		
CS2	OC	OP	744	.935	0	250000	250000	0	4	48	56	62	73	1	0	11160	11160	0
Report Month 2																		
CS2	OC	OP	669	1.284	0	224892	224892	0	4	45	53	60	82	1	0	9031	9031	0
Report Month 3																		
CS2	OC	OP	653	2.896	0	219472	219472	0	4	55	65	68	78	1	0	8600.9	8600.9	0
Report Month 4																		
CS2	OC	OP	720	1.667	0	241935	241935	0	4	57	65	68	76	1	0	10451.6	10451.6	0
Report Month 5																		
CS2	OC	OP	653	1.599	0	219422	219422	0	4	69	77	82	95	1	0	9519.7	9519.7	0
Report Month 6																		
CS2	OC	OP	687	2.476	0	230897	230897	0	4	80	87	93	107	1	0	9519.7	9519.7	0

SCHEDULE 8. PART D. COOLING SYSTEM INFORMATION, MONTHLY OPERATIONS

Complete an individual Schedule 8, Part D for each thermoelectric power plant (organically fueled, nuclear and combined cycle) with a total steam capacity greater than, or equal to, 100 megawatts.

- **Complete a separate schedule for each reporting month.**
- Complete a separate row for each cooling system.
- If actual data are not available, provided an estimated value.
- If the source of cooling water is a well or municipal water system, do not complete the Cooling Water Temperature sections.

Cooling System ID	Cooling System Type	Cooling System Status	Annual Amt of Hours Chlorine in added to Service Per Water (1000 lbs)	Average Monthly Rate of Cooling Water (to nearest 0.1 gallons per minute)						Cooling Water Temperature (degrees Fahrenheit)					Volume Cooling Water (to nearest 0.001 million gallons per month)			
				Div	Withdrawal	Discharge	Consumption	Method of Measure	Avg at Intake	Max at Intake	Avg at Discharge	Max at Discharge	Method of Measure	Div	Withdrawal	Discharge	Consumption	
Report Month 7																		
CS2	OC	OP	744	2.849	0	250000	250000	0	4	87	94	105	114	1	0	11160	11160	0
Report Month 8																		
CS2	OC	OP	674	3.023	0	226376	226376	0	4	83	94	99	114	1	0	9150.5	9150.5	0
Report Month 9																		
CS2	OC	OP	705	2.898	0	236949	236949	0	4	75	84	91	101	1	0	10025.2	10025.2	0
Report Month 10																		
CS2	OC	OP	744	2.871	0	250000	250000	0	4	63	76	79	94	1	0	11160	11160	0
Report Month 11																		
CS2	OC	OP	616	1.944	0	206892	206892	0	4	52	62	64	80	1	0	7643.1	7643.1	0
Report Month 12																		
CS2	OC	OP	744	2.077	0	250000	250000	0	4	48	58	63	76	1	0	11160	11160	0

SCHEDULE 9. COMMENTS
 (Instructions for SCHEDULE 9. are on page 20.)

Schedule	Part	Item	Comments
8	C	OT	B1 OT FLUX AGENT
8	C	OT	B2 OT FLUX AGENT
8	C	OT	B1 OXIDIZE HALIDE
8	C	OT	B2 OXIDIZE HALIDE

Generator Retirement Dates

Generator Id	Retirement Month	Retirement Year	Comments
Changes in Ownership (Provide name of purchaser and date sold.)			

ERRORS

Purchase Type	Fuel	Schedule	Prime Mover	Equipment ID	Rpt Month	Supplier	Error Number & Description	Ranges	Override Comment
		8C		FGD1/S			851 The Removal Efficiency tested at 100% load for sulfur dioxide is outside the expected range of 50%-99%. If correct, enter a comment to explain data out of typical range.		Removal Efficiency is reported at 98.6%, which falls within the typical range.

EXHIBIT II

Federal Energy Regulatory Commission Form FERC-714
(Supersedes FERC Form 12)



Annual Electric Balancing Authority Area and Planning Area Report

For the Year Ending December 31, 2021

Part I - Schedule 1. Identification and Certification

1. Respondent Identification:

Code: 12658
Name: Minnkota Power Cooperative, Inc.

2. Respondent Type: (Please check appropriate box and fill in name)

Part I: Balancing Authority Area (Complete Parts I, II, and IV)
 Unit dispatch is not based on the economic dispatch of thermal units (i.e., a system lambda is not calculated)
Balancing Authority Area Name:

Part II: Planning Area (Complete Parts I, III, and IV)
Planning Area Name:
Minnkota Power Cooperative, Inc.

3. Respondent Mailing Address:

Minnkota Power Cooperative, Inc, 5301 32nd Ave South, Grand Forks, ND 58201

4. Contact Person:

Name: Dan Trebil
Title: Manager Energy Supply

E-mail address: dtrebil@minnkota.com
Telephone #: 701-795-4424

Ext:

5. Certifying Official:

Name: Todd Sailer
Title: Senior Manager Power Supply
Date: 05/25/2022

This report is an Original Revised Filing

**Annual Electric Balancing Authority Area and Planning
Area Report**

For the Year Ending December 31, 2021

Part III - Schedule 1. Electric Utilities That Compose the Planning Area

Enter the name of each entity, including the respondent, that forms the planning area for which this report is being prepared and their coincident summer and winter peak demands in megawatts. Refer to the Form 714 instructions for specific guidelines.

Line No. (a)	Electric Utility Name (b)	Electric Utility Coincident Peak Demand (MW) (MWh)	
		Summer (c)	Winter (d)
1	Beltrami Electric Coop.	75	107
2	Cass County Electric Coop.	243	244
3	Cavalier Rural Electric Coop.	8	7
4	Clearwater Polk Electric Coop.	14	22
5	Nodak Electric Coop.	173	200
6	North Star Electric Coop.	18	29
7	Northern Municipal Power Agency	85	79
8	PKM Electric Coop.	21	26
9	Red Lake Electric Coop.	19	27
10	Red River Electric Coop.	23	33
11	Roseau Electric Coop.	22	36
12	Wild Rice Electric Coop.	46	70

**Annual Electric Balancing Authority Area and Planning
Area Report**

Utility Code:12658
Utility Name:Minnkota Power Cooperative, Inc.

For the Year Ending December 31, 2021

Part III - Schedule 2. Planning Area Hourly Demand

Respondents must provide the following data: the planning area's actual hourly demand, in megawatts, for each hour of the year starting with 1 a.m. January 1 as more fully described in the Form 714 instructions. In column (b) indicate the time zone and the days for which daylight savings time was observed. This schedule will have 365 rows for the report year (366 rows for a leap year). For hours when this information is not available, enter "0.00" and provide, as a footnote to those hours, an explanation describing the reason for the unavailability of the data.

Date (a)	Time Zone (b)	0100 (c)	0200 (d)	0300 (e)	0400 (f)	0500 (g)	0600 (h)	0700 (i)	0800 (j)	0900 (k)	1000 (l)	1100 (m)	1200 (n)	1300 (o)	1400 (p)	1500 (q)	1600 (r)	1700 (s)	1800 (t)	1900 (u)	2000 (v)	2100 (w)	2200 (x)	2300 (y)	2400 (z)
2021-01-01	CST	621.452	581.756	563.987	551.58	547.771	546.181	555.284	571.947	582.641	594.388	622.524	628.155	620.491	608.378	594.882	586.245	588.83	608.22	640.76	638.322	622.277	608.578	590.154	574.974
2021-01-02	CST	558.077	542.354	534.694	533.876	538.78	547.63	563.469	583.662	607.671	624.76	635.636	625.689	608.332	589.23	568.496	540.961	539.156	577.896	634.425	639.566	621.51	612.374	595.819	572.802
2021-01-03	CST	558.389	544.884	537.045	534.242	536.427	540.992	551.08	568.943	585.454	590.55	598.789	583.68	567.182	545.906	532.286	522.069	529.525	564.356	617.812	623.466	615.626	599.964	575.548	550.54
2021-01-04	CST	527.118	512.3	505.582	501.284	498.652	502.325	528.884	577.971	598.422	591.913	577.591	564.166	554.944	579.195	562.866	552.538	551.175	572.275	600.622	609.028	607.854	597.755	582.099	560.949
2021-01-05	CST	597.167	582.032	577.14	578.467	581.623	591.943	623.406	679.344	686.654	679.218	667.453	648.104	634.636	664.896	640.665	623.237	625.357	641.328	652.517	654.558	644.259	623.637	601.746	564.269
2021-01-06	CST	590.529	564.437	547.594	536.65	535.157	540.186	563.819	616.085	628.989	624.571	614.544	587.302	574.594	605.372	584.117	572.118	568.848	582.472	598.485	600.498	606.166	597.573	578.552	555.13
2021-01-07	CST	593.236	577.788	569.846	565	574.804	589.603	616.756	672.851	682.387	645.883	622.236	642.13	644.542	667.094	642.921	629.002	626.064	643.656	654.262	654.603	646.802	633.889	610.682	582.135
2021-01-08	CST	617.573	592.31	575.428	568.509	566.726	568.929	595.119	641.794	650.31	644.424	642.912	637.962	624.385	657.866	636.207	623.404	616.839	623.057	619.7	614.421	601.962	584.647	555.99	528.225
2021-01-09	CST	559.141	532.501	515.019	504.057	499.353	501.264	512.507	528.954	555.355	563.446	571.943	576.983	576.075	604.712	576.538	559.908	556.47	569.144	579.522	585.541	577.03	566.535	552.567	536.51
2021-01-10	CST	576.612	558.906	547.279	547.032	548.217	553.636	565.907	584.139	581.068	593.03	599.892	591.307	578.403	608.082	579.273	565.726	574.396	595.165	610.034	615.097	607.885	592.929	570.995	541.373
2021-01-11	CST	555.165	520.386	509.286	525.26	535.119	546.67	577.926	634.067	650.956	644.539	638.14	617.638	600.835	627.498	611.189	599.823	597.711	612.49	622.569	626.862	618.156	603.05	584.575	556.856
2021-01-12	CST	573.257	531.789	518.709	514.729	517.502	534.133	565.131	621.202	630.956	618.653	606.356	578.451	555.9	585.564	560.648	545.144	541.126	558.978	575.719	578.642	572.81	558.116	531.101	499.626
2021-01-13	CST	525.788	505.067	505.489	512.294	519.045	531.365	564.47	617.857	597.291	584.736	571.771	557.464	539.765	560.197	535.561	524.551	529.075	551.627	568.847	561.564	550.451	534.291	508.256	477.53
2021-01-14	CST	489.536	463.127	450.718	440.783	441.159	455.55	496.826	548.928	549.403	530.857	529.758	532.356	540.386	579.066	566.145	566.512	562.942	562.668	579.687	579.224	568.897	553.73	533.113	501.292
2021-01-15	CST	532.582	517.086	499.621	488.291	484.246	492.061	516.29	555.677	563.162	567.466	569.112	571.022	572.36	628.487	617.227	608.941	610.228	627.039	642.555	644.032	634.87	621.597	604.05	582.956
2021-01-16	CST	628.249	606.722	564.159	544.113	540.049	541.945	551.757	570.265	562.972	580.187	593.57	592.376	578.196	619.802	612.369	595.164	589.251	594.979	596.735	601.166	598.005	588.167	578.287	561.54
2021-01-17	CST	609.189	589.519	573.996	568.029	562.854	558.417	559.798	565.282	555.171	566.134	578.266	584.879	585.099	633.421	618.666	612.246	614.534	630.001	636.28	636.283	631.892	618.441	604.378	574.782
2021-01-18	CST	619.496	601.666	592.739	590.21	590.084	594.748	618.883	662.784	667.633	675.59	681.447	683.75	675.59	728.073	706.801	681.664	704.559	724.257	724.67	735.361	729.626	712.768	687.094	653.854
2021-01-19	CST	706.528	682.826	665.13	655.298	649.462	653.211	679.814	736.462	734.094	728.081	722.309	714.34	698.686	744.637	720.33	705.144	701.468	718.073	729.197	744.926	742.364	729.769	702.455	671.756
2021-01-20	CST	723.186	700.807	688.813	672.969	666.366	653.316	667.35	703.855	686.004	663.925	639.083	600.071	592.442	617.436	596.747	605.676	608.417	614.212	623.191	629.639	621.634	601.325	577.003	548.105
2021-01-21	CST	567.965	544.397	535.173	526.847	526.751	543.918	579.549	644.447	664.066	670.31	669.468	668.614	665.948	723.073	710.469	697.472	688.628	705.182	705.923	722.465	719.026	706.421	684.606	654.37
2021-01-22	CST	708.634	689.08	677.647	672.316	672.363	675.262	696.001	745.449	739.392	728.679	718.526	678.03	630.489	669.992	644.887	641.246	657.082	666.894	658.337	661.472	646.4	631.448	614.235	590.876
2021-01-23	CST	626.766	604.614	590.728	582.41	578.293	579.628	592.029	612.245	605.207	621.175	630.566	628.966	617.474	657.263	633.683	617.499	612.941	622.329	617.82	615.096	604.373	589.906	578.37	561.924
2021-01-24	CST	610.516	596.606	581.948	574.244	591.332	604.47	620.243	642.382	629.931	644.57	645.855	640.604	639.532	702.574	684.646	668.191	661.176	680.349	695.361	715.296	710.293	695.762	674.366	644.195
2021-01-25	CST	700.997	682.777	671.88	666.396	664.334	671.702	698.413	750.095	744.537	735.857	733.935	727.832	717.473	767.805	746.878	734.753	737.031	586.518	560.657	554.624	540.562	525.332	592.349	776.779
2021-01-26	CST	733.418	708.217	692.199	682.23	678.509	684.565	711.472	760.946	756.186	743.341	735.79	730.917	719.657	775.46	755.791	741.88	739.737	626.865	575.58	570.134	552.987	619.618	802.303	783.02
2021-01-27	CST	758.478	743.539	733.252	727.716	725.008	731.762	760.32	818.178	808.947	796.061	782.413	768.42	753.99	809.48	781.6	759.638	753.802	765.807	752.659	766.365	757.908	738.062	711.033	677.723
2021-01-28	CST	729.432	707.326	695.35	684.041	681.237	684.749	710.004	764.018	760.373	742.916	728.827	708.991	692.79	736.654	714.592	702.366	698.256	704.832	694.777	703.786	697.043	682.687	656.125	619.545
2021-01-29	CST	648.604	622.301	613.373	606.183	601.361	606.136	630.066	681.259	689.437	677.896	673.224	668.384	662.4	707.778	685.789	667.893	665.861	671.254	655.834	657.743	642.621	628.477	605.678	580.876
2021-01-30	CST	621.742	594.027	578.811	568.686	561.664	558.57	567.38	582.27	604.235	621.544	610.038	615.808	611.896	644.122	623.085	607.608	602.79	607.591	602.648	607.475	594.066	578.479	561.759	540.513
2021-01-31	CST	575.775	551.782	538.052	530.752	529.65	531.058	536.498	550.361	546.483	562.552	578.246	584.813	585.079	630.75	609.086	597.459	595.306	610.925	617.275	633.394	626.114	611.71	591.264	562.953
2021-02-01	CST	602.17	576.792	567.411	560.441	556.63	566.512	594.055	649.93	658.874	647.813	643.447	639.57	628.597	653.743	623.33	625.242	635.3	641.225	640.377	655.095	646.424	632.424	605.999	576.971
2021-02-02	CST	616.692	565.079	549.159	545.528	539.911	536.92	578.114	648.872	668.313	644.19	604.8	606.658	607.878	657.759	640.85	601.829	595.66	608.166	615.654	636.495	626.144	608.389	587.737	565.704
2021-02-03	CST	607.35	591.326	579.19	555.84	541.109	545.282	580.369	638.067	643.152	636.448	635.195	634.222	631.607	655.112	606.738	608.236	626.919	634.187	611.537	603.888	590.515	581.545	567.641	558.082
2021-02-04	CST	598.347	580.586	573.592	575.021	580.825	594.201	620.068	666.562	676.194	676.449	680.635	677.427	671.044	721.97	700.002	688.919	704.498	720.157	746.787	768.688	771.027	731.649	696.297	663.271
2021-02-05	CST	702.653	682.891	673.798	669.523	669.91	676.424	704.721	756.228	751.419	741.241	727.36	710.685	698.024	751.778	733.256	723.249	726.413	742.552	726.955	746.523	739.566	725.571	712.596	691.037
2021-02-06	CST	721.895	710.694	734.443	734.069	728.075	731.629	742.722	764.121	793.072	810.14	813.773	810.014	801.135	782.973	768.915	755.839	751.808	768.491	762.804	784.76	777.3	763.294	747.121	726.446
2021-02-07	CST	783.623	771.54	761.392	752.468	742.706	740.657																		

2021-03-30	CST	414.027	421.74	441.634	467.65	488.413	520.74	588.756	601.745	586.267	576.164	556.036	550.109	597.826	606.243	607.173	609.226	611.507	597.856	600.373	607.078	615.246	592.007	554.685	576.96
2021-03-31	CST	552.186	539.348	537.135	537.623	546.745	575.893	633.181	633.018	611.741	601.912	596.441	586.146	616.188	591.666	565.024	545.164	537.252	525.006	517.452	532.268	557.796	555.33	536.219	560.782
2021-04-01	CST	545.29	539.258	537.817	541.181	553.346	582.175	636.887	638.944	615.796	592.743	576.758	561.719	567.631	539.565	519.163	511.64	506.059	489.351	491.2	499.188	511.943	469.187	435.494	444.155
2021-04-02	CST	439.58	449.426	459.944	466.742	471.777	491.156	528.884	541.885	545.257	534.895	523.343	509.138	515.237	491.207	478.324	462.321	459.045	456.111	449.438	411.712	425.199	442.723	425.53	430.87
2021-04-03	CST	411.871	404.521	404.56	403.081	411.412	433.913	456.746	460.819	472.149	472.172	464.299	456.192	463.931	442.67	429.372	420.94	418.577	417.046	416.409	414.983	427.033	422.272	402.267	395.626
2021-04-04	CST	375.033	369.149	365.8	366.666	371.867	382.979	406.015	435.839	461.63	466.207	462.488	451.898	433.467	415.714	404.011	398.014	396.818	404.245	411.941	421.681	440.302	432.336	404.617	380.898
2021-04-05	CST	367.454	362.431	364.956	368.051	380.355	411.253	462.7	489.616	497.786	494.419	494.423	491.684	500.239	489.526	482.134	474.183	473.606	467.634	468.069	470.591	482.703	464.648	430.155	416.065
2021-04-06	CST	397.28	391.156	390.185	393.344	404.417	437.177	501.917	525.062	516.077	498.788	491.806	483.419	496.424	477.63	458.489	453.259	458.367	460.379	464.301	473.049	483.763	467.425	438.234	431.389
2021-04-07	CST	411.242	396.597	395.497	400.926	410.311	442.242	502.39	525.358	520.365	514.926	511.056	507.041	526.366	513.33	508.48	507.089	509.566	509.102	508.207	501.153	502.845	484.894	452.719	452.68
2021-04-08	CST	431.366	418.693	413.521	412.554	425.269	453.028	505.487	523.384	515.109	513.919	511.658	511.883	532.07	524.757	518.924	519.33	528.467	528.396	521.527	523.109	528.046	507.684	476.078	475.56
2021-04-09	CST	450.591	437.089	431.442	430.512	438.366	468.302	522.99	545.543	543.357	545.437	542.477	540.448	556.063	539.861	525.868	519.998	516.001	497.002	487.278	485.291	497.064	488.178	464.438	465.949
2021-04-10	CST	449.444	442.998	437.526	436.974	441.479	451.496	473.091	478.275	491.411	495.703	491.177	483.644	493.045	470.786	454.777	446.696	443.764	435.878	431.321	432.629	450.973	448.713	430.504	440.842
2021-04-11	CST	425.965	422.379	421.69	423.551	428.371	438.615	459.206	461.818	472.209	475.399	471.927	464.173	485.764	468.896	456.299	450.85	454.658	460.466	462.684	468.705	475.705	466.45	437.469	434.266
2021-04-12	CST	411.865	403.188	400.287	403.251	414.332	447.292	507.951	533.115	534.406	540.323	538.096	527.296	554.822	550.812	542.869	539.615	546.055	544.416	549.682	553.379	560.147	547.934	517.568	535.085
2021-04-13	CST	515.272	498.524	495.417	499.802	507.135	535.588	579.679	563.415	540.905	532.517	528.135	517.277	538.612	525.755	517.776	513.552	522.191	521.098	522.69	528.521	535.612	526.716	509.494	525.948
2021-04-14	CST	504.606	490.044	480.49	478.223	486.221	511.491	564.471	568.018	542.714	523.49	512.218	508.64	534.715	525.691	521.488	526.947	528.583	518.955	521.443	529.098	544.362	541.707	520.215	531.784
2021-04-15	CST	505.925	485.692	480.829	482.35	486.138	513.997	564.229	576.962	567.574	560.36	549.359	536.764	547.311	529.73	515.146	510.938	507.862	480.514	472.148	489.54	510.843	504.697	477.807	480.537
2021-04-16	CST	459.985	433.327	415.736	421.484	450.479	483.763	536.055	555.954	549.832	533.732	497.427	471.193	494.567	495.665	491.19	476.964	473.476	460.843	438.812	430.299	443.241	462.646	457.676	446.221
2021-04-17	CST	456.305	448.97	444.653	445.749	450.746	465.975	487.612	487.252	491.682	489.981	482.667	471.355	482.361	462.14	445.061	434.944	432.142	418.303	405.756	402.164	420.891	437.903	423.587	429.265
2021-04-18	CST	413.679	409.036	407.25	409.769	415.899	429.396	444.688	452.902	467.591	475.859	465.657	476.33	526.333	528.861	523.287	523.077	532.225	534.143	542.68	548.366	557.733	542.35	513.115	532.797
2021-04-19	CST	507.14	495.395	495.782	495.309	502.744	535.06	591.946	602.912	581.847	566.855	561.209	555.781	573.691	556.66	542.896	534.872	535.654	525.946	522.75	524.83	532.568	529.754	500.9	514
2021-04-20	CST	492.12	481.154	482.66	493.452	500.053	528.364	582.506	589.681	568.386	555.513	551.302	544.342	568.335	557.358	548.605	541.2	543.989	532.957	536.111	537.254	547.267	542.781	516.484	533.378
2021-04-21	CST	512.706	502.676	502.273	500.045	508.203	535.641	587.757	591.152	572.322	551.06	547.45	535.766	549.952	534.6	517.111	513.111	504.87	489.714	485.969	487.135	503.649	504.404	474.819	472.863
2021-04-22	CST	454.229	451.278	450.76	454.658	467.159	497.823	554.44	563.153	531.154	514.633	503.494	495.795	501.25	479.162	462.172	458.712	452.172	451.463	455.061	461.549	451.264	440.361	429.761	431.145
2021-04-23	CST	414.896	406.933	404.21	407.047	418.989	449.587	504.937	526.515	508	505.067	525.439	540.909	569.542	555.516	540.062	523.534	526.451	521.978	513.48	506.093	511.515	512.885	493.128	506.034
2021-04-24	CST	485.641	481.521	481.945	486.722	494.306	507.092	528.998	540.492	531.376	519.46	511.79	502.344	511.157	489.3	472.279	458.329	454.285	445.767	444.104	448.038	461.571	475.217	464.042	477.893
2021-04-25	CST	463.307	457.544	455.637	456.633	461.574	469.831	479.878	479.88	494.093	504.472	505.682	505.281	533.409	517.763	511.879	508.832	511.752	477	469.377	475.828	505.254	509.178	482.137	489.153
2021-04-26	CST	466.736	453.719	447.453	446.279	453.509	482.558	539.154	558.592	555.295	554.565	547.878	532.394	550.745	534.923	514.721	506.698	503.188	502.502	502.126	499.195	505.421	495.379	465.674	463.029
2021-04-27	CST	442.264	432.268	425.204	424.558	433.084	466.321	520.967	538.569	522.264	511.455	502.474	486.8	498.584	489.106	479.864	474.257	466.332	457.782	456.157	457.048	468.446	469.227	440.579	421.175
2021-04-28	CST	408.391	400.311	397.785	399.825	412.299	447.874	499.256	524.44	504.828	490.16	480.586	474.161	466.29	465.296	462.94	460.316	459.947	461.451	465.145	466.145	475.644	471.943	437.078	407.055
2021-04-29	CST	387.632	379.423	374.363	380.972	390.702	426.648	489.457	529.414	526.343	516.896	503.122	494.851	487.631	481.916	473.445	471.022	467.124	467.853	467.571	467.485	475.396	482.995	457.337	428.689
2021-04-30	CST	416.259	413.427	413.147	418.574	429.665	461.854	509.523	543.611	532.716	526.403	517.804	504.113	491.941	484.697	472.834	465.089	462.746	463.577	458.208	450.178	453.26	465.337	445.87	420.011
2021-05-01	CST	400.125	384.95	375.246	370.251	370.582	381.151	396.733	415.597	430.203	440.772	444.463	442.682	444.927	441.501	442.355	448.152	453.279	460.366	460.636	453.87	450.564	452.262	426.872	399.934
2021-05-02	CST	375.55	360.913	349.989	348.041	353.634	359.737	369.045	394.45	423.447	438.73	442.964	447.39	453.173	446.041	443.469	443.333	442.113	451.753	463.377	466.319	466.656	458.032	425.369	392.409
2021-05-03	CST	357.543	332.693	332.948	349.081	375.266	409.772	468.845	515.326	513.851	513.236	514.783	513.143	503.236	494.633	487.767	480.797	482.288	488.498	489.978	490.297	485.442	487.681	468.428	439.126
2021-05-04	CST	421.796	416.151	417.928	421.99	422.782	447.839	499.221	526.846	511.692	501.865	491.382	483.18	476.493	470.712	462.202	455.181	456.508	460.185	462.893	468.839	478.308	486.044	461.256	433.322
2021-05-05	CST	420.688	416.687	417.81	419.268	430.009	461.862	512.47	542.686	527.797	511.466	499.042	492.845	481.147	472.564	466.232	465.631	465.369	470.335	473.719	475.51	480.131	481.585	456.506	427.924
2021-05-06	CST	415.279	405.114	408.376	413.156	422.884	458.47	511.235	537.047	515.681	499.183	488.579	480.763	468.977	464.84	460.833	458.304	460.674	465.665	462.11	462.819	469.729	475.495	451.511	424.446
2021-05-07	CST	411.443	407.511	405.394	408.262	422.203	455.273	504.205	532.131	515.896	505.351	497.927	485.909	474.943	466.835	457.374	447.467	444.242	443.445	439.215	439.66	444.967	455.884	438.041	416.841
2021-05-08	CST	404.962	400.746	401.83	407.994	418.304	429.384	444.652	464.219	469.397	471.347	467.493	457.248	447.195	435.555	427.101	422.462</								

2021-05-16	CST	366.569	352.126	344.444	342.387	343.987	342.871	353.375	378.238	407.509	429.017	442.492	449.812	458.296	460.977	457.5	462.521	473.077	482.317	491.431	493.723	489.584	483.959	448.302	403.208
2021-05-17	CST	375.062	359.199	350.982	347.206	350.443	373.184	422.825	467.89	475.831	484.004	501.07	516.572	520.142	526.995	531.337	533.903	545.786	552.511	550.489	543.851	530.586	519.326	479.905	426.163
2021-05-18	CST	404.038	383.59	373.004	369.849	374.115	390.193	438.584	457.785	446.758	453.477	463.101	474.761	480.652	484.653	491.321	493.026	496.42	497.747	499.555	495.232	492.222	487.731	460.759	425.721
2021-05-19	CST	398.618	382.515	369.189	361.972	360.08	378.841	424.119	461.254	454.745	457.586	467.397	482.244	495.808	504.152	511.143	515.24	514.201	512.468	511.533	501.4	490.408	500.028	471.807	429.082
2021-05-20	CST	399.494	380.657	369.161	360.912	360.021	381.463	428.145	468.965	455.394	458.561	465.078	469.94	475.753	475.9	482.732	489.369	497.858	497.527	492.838	483.227	474.09	476.596	448.904	412.187
2021-05-21	CST	390.538	375.954	368.709	362.916	364.964	385.205	421.702	468.653	474.8	481.893	487.346	489.842	496.098	506.961	516.024	522.535	528.813	532.477	525.651	519.501	506.352	501.299	474.178	435.661
2021-05-22	CST	396.809	375.278	361.47	345.671	338.651	352.122	364.388	390.74	416.701	442.233	458.817	457.528	453.295	444.954	435.526	432.245	433.291	436.123	434.824	430.69	426.736	429.989	411.677	386.395
2021-05-23	CST	366.446	356.786	350.022	344.188	345.209	346.214	352.573	378.891	405.538	425.768	433.776	440.793	444.742	437.36	405.002	389.765	398.641	439.196	468.8	476.024	472.783	468.316	434.316	392.801
2021-05-24	CST	366.629	353.571	345.728	344.465	353.384	381.938	431.336	475.087	478.106	484.058	489.017	496.319	502.113	507.183	512.718	522.251	532.494	542.49	547.067	542.321	526.405	512.428	475.375	426.813
2021-05-25	CST	415.252	394.713	383.676	377.037	375.439	390.635	436.385	473.985	478.202	489.085	499.486	506.084	506.861	506.671	501.708	491.921	489.173	487.259	487.297	481.395	473.979	471.592	441.853	404.729
2021-05-26	CST	382.398	371.435	365.525	365.725	371.889	398.978	451.008	495.148	497.272	497.867	495.002	488.288	481.298	475.232	467.269	463.135	459.611	460.739	465.517	472.193	473.827	475.987	456.541	424.296
2021-05-27	CST	404.936	396.118	392.289	392.182	399.764	421.637	473.557	513.509	513.485	499.918	488.309	473.989	464.845	459.302	452.229	446.205	445.684	447.227	445.261	450.174	452.267	457.738	444.312	412.656
2021-05-28	CST	393.38	385.381	381.389	382.291	391.208	409.814	448.85	472.405	473.89	472.385	463.061	456.256	445.901	440.958	436.785	431.427	426.744	427.883	422.773	420.526	417.502	422.328	408.973	383.194
2021-05-29	CST	361.482	354.777	364.73	365.88	367.014	369.875	376.155	392.219	418.024	427.524	430.098	410.668	393.949	386.788	381.776	378.922	375.71	379.642	380.894	380.137	375.313	379.056	366.721	343.491
2021-05-30	CST	325.401	315.349	315.72	313.724	314.065	317.631	324.589	347.516	372.71	385.913	391.525	394.31	391.989	387.164	383.763	380.289	392.704	394.829	394.012	391.906	384.291	385.896	378.928	349.568
2021-05-31	CST	325.75	312.326	305.358	305.184	308.643	309.942	321.544	343.292	372.726	389.293	396.311	399.58	399.669	398.036	399.066	404.95	419.022	434.89	444.139	446.718	442.866	433.922	404.125	356.685
2021-06-01	CST	326.519	310.386	303.303	304.814	310.641	332.852	379.601	417.652	432.297	458.265	484.964	494.804	500.143	505.922	507.289	514.509	519.488	519.869	518.743	511.729	503.993	497.913	468.144	419.591
2021-06-02	CST	387.23	366.699	354.98	351.682	357.92	378.99	424.861	466.119	475.267	490.538	505.146	523.863	539.539	557.114	571.359	586.193	582.802	595.036	596.779	584.918	557.972	531.585	492.447	449.938
2021-06-03	CST	415.775	394.784	384.484	379.11	383.585	404.458	443.493	482.662	499.167	516.217	539.596	555.11	566.985	583.353	598.759	608.018	591.503	589.468	586.955	601.184	611.877	597.545	565.314	505.444
2021-06-04	CST	458.848	428.203	406.243	394.183	392.867	403.342	443.826	497.625	535.724	574.812	608.18	638.23	658.149	676.085	679.365	684.29	688.957	683.665	671.54	651.858	631.05	615.09	577.689	527.024
2021-06-05	CST	485.641	454.035	430.049	413.718	404.95	357.203	357.479	411.208	474.239	527.358	562.9	589.249	604.002	613.651	638.473	663.103	682.022	688.643	680.31	658.91	619.756	597.689	566.397	532.752
2021-06-06	CST	503.945	480.381	467.539	451.692	446.014	437.862	440.933	470.437	508.964	544.668	569.996	595.397	611.379	621.734	623.796	624.206	632.622	631.538	634.822	628.808	603.033	571.307	534.556	478.17
2021-06-07	CST	436.21	410.374	394.948	388.463	386.352	401.848	445.934	489.673	517.968	548.468	567.426	586.279	606.049	625.139	637.773	650.109	666.901	675.717	651.682	643.383	621.94	595.828	528.013	467.84
2021-06-08	CST	429.198	407.814	392.838	382.885	390.788	411.765	454.343	490.797	508.512	524.846	541.723	563.554	584.474	601.047	613.437	631.043	644.782	649.075	645.195	633.349	618.871	603.671	569.704	509.22
2021-06-09	CST	470.682	428.14	394.95	382.08	399.095	431.228	473.776	509.766	540.329	577.526	601.575	623.81	644.913	667.101	612.732	587.071	594.351	600.145	600.407	587.284	624.43	630.564	599.784	540.188
2021-06-10	CST	495.218	464.414	445.012	431.103	427.032	439.155	484.764	532.193	558.716	579.428	601.316	623.624	641.234	655.171	664.508	682.835	692.63	697.458	693.995	684.332	670.54	634.519	584.105	522.801
2021-06-11	CST	472.02	448.448	432.5	414.101	406.475	406.185	429.257	458.545	475.418	495.919	514.117	535.937	551.81	552.509	550.564	548.468	543.725	542.385	526.555	503.184	477.191	457.525	436.298	398.139
2021-06-12	CST	369.278	350.68	340.179	332.301	329.884	329.08	348.337	371.315	402.538	428.26	443.69	458.91	467.013	473.771	480.381	493.676	509.21	542.065	541.87	531.618	504.33	471.501	449.066	409.57
2021-06-13	CST	375.963	355.532	343.172	335.77	326.289	321.255	337.499	373.556	425.542	467.82	473.305	490.931	510.201	518.277	519.589	532.289	574.832	607.425	618.213	612.384	595.265	567.01	535.648	481.157
2021-06-14	CST	419.871	393.082	381.137	374.849	374.696	384.099	426.282	475.526	506.221	521.583	552.631	578.964	590.102	602.248	613.619	627.706	641.993	648.108	643.688	629.531	598.31	569.513	537.626	480.255
2021-06-15	CST	440.405	414.022	395.912	389.362	393.806	406.634	454.185	497.164	485.905	471.836	481.915	504.346	517.114	535.699	547.474	561.219	571.81	580.118	576.974	560.845	540.557	515.797	485.826	433.837
2021-06-16	CST	395.616	369.57	354.814	346.875	367.465	371.11	409.522	455.11	477.647	502.424	531.589	550.207	567.535	583.94	584.247	591.982	610.015	629.133	630.458	623.419	617.072	604.75	575.305	508.516
2021-06-17	CST	464.966	440.979	421.249	408.415	404.39	416.469	460.883	500.628	518.456	555.594	572.773	584.914	595.598	612.713	622.395	634.764	648.25	624.331	604.158	592.906	594.668	587.857	557.436	499.86
2021-06-18	CST	453.93	420.742	403.133	394.998	391.976	399.155	433.291	471.074	492.054	521.87	545.067	563.226	570.436	580.064	591.035	594.484	594.82	571.664	547.359	516.964	489.359	475.398	461.826	427.331
2021-06-19	CST	400.979	384.142	372.947	364.744	364.314	363.133	371.147	396.947	423.443	444.8	459.757	464.455	472.89	478.264	486.668	498.365	511.873	524.445	526.853	511.001	493.155	483.08	470.364	437.184
2021-06-20	CST	405.516	383.833	372.683	366.727	367.387	367.448	370.585	389.123	411.214	430.933	441.92	451.194	454.05	452.992	452.478	454.7	458.506	467.557	468.24	457.633	454.073	448.591	435.374	399.365
2021-06-21	CST	374.503	358.024	352.123	351.934	359.29	375.906	415.071	449.426	460.234	467.744	477.498	483.107	481.238	482.756	479.879	477.908	478.459	470.292	469.132	469.255	466.139	467.114	448.994	410.849
2021-06-22	CST	384.91	367.797	360.347	358.946	363.708	381.253	424.415	453.299	460.358	467.769	470.494	478.555	483.152	485.862	493.032	505.632	518.789	528.544	536.388	541.146	530.981	515.309	493.978	449.396
2021-06-23	CST	411.776	393.749	381.518	379.62	386.129	405.375	439.324	476.955	493.289	515.861	536.419	556.824	559.785	563.968	576.33	595.297	610.685	605.269	602.517	588.872	573.764	554.092	516.993	455.399
2021-06-24	CST	413.781	385.387	372.007	391.596	397.903	405.317	442.106	483.085	512.371	537.873	561.267	580.735	595.784	604.363	613.168	611.9								

2021-07-02	CST	498.902	464.938	446.675	436.431	432.669	430.318	441.082	487.724	534.687	588.9	631.859	660.212	671.819	692.287	703.599	709.807	715.266	716.787	710.146	691.172	661.388	629.978	603.979	561.431
2021-07-03	CST	516.79	483.685	462.615	447.265	439.425	430.422	436.962	476.084	522.96	576.704	613.713	639.325	653.903	656.486	657.009	655.885	659.322	664.706	659.71	636.095	602.29	580.426	559.89	533.221
2021-07-04	CST	495.067	469.522	450.79	440.432	432.784	427.107	433.503	465.825	517.465	564.455	600.485	625.052	640.88	649.314	655.414	661.122	670.62	676.947	668.673	651.933	629.1	599.115	572.73	547.061
2021-07-05	CST	508.919	475.67	454.528	437.611	426.9	421.866	433.196	465.454	508.555	549.343	579.502	610.67	639.056	655.403	664.2	678.107	690.073	699.55	694.925	678.962	651.064	624.1	585.424	529.025
2021-07-06	CST	487.251	459.871	440.527	425.211	422.51	433.623	461.15	491.434	503.42	511.67	520.605	529.273	535.252	538.701	540.866	537.424	535.664	535.921	532.071	522.099	509.991	499.702	476.862	441.32
2021-07-07	CST	413.72	399.597	389.1	382.975	385.868	403.999	437.202	473.098	486.876	495.71	506.512	518.713	522.633	529.559	531.144	532.735	536.883	537.787	535.704	528.341	521.424	512.801	476.877	417.802
2021-07-08	CST	382.428	365.438	353.144	348.952	349.145	362.836	396.742	435.031	452.991	473.826	489.176	504.334	510.635	516.623	523.264	524.585	528.784	524.783	517.19	514.677	499.538	484.586	466.328	427.161
2021-07-09	CST	393.83	371.935	356.899	349.878	348.257	361.773	395.84	431.853	455.949	474.722	493.851	512.755	522.722	530.266	540.574	549.685	564.12	570.617	565.805	548.717	522.915	500.793	480.201	436.11
2021-07-10	CST	399.714	379.028	363.826	355.138	350.965	349.581	358.334	387.284	427.302	462.482	493.344	536.137	567.067	585.353	594.252	604.41	614.28	620.56	604.025	568.77	546.5	541.711	526.353	487.97
2021-07-11	CST	453.547	426.021	404.559	367.873	351.139	357.319	378.878	406.417	442.02	477.431	513.862	544.634	552.897	568.198	582.524	608.204	616.869	630.886	640.716	630.528	610.08	571.124	522.192	478.299
2021-07-12	CST	454.112	439.105	425.931	416.626	416.749	433.938	471.399	511.773	537.166	563.253	588.775	609.903	627.7	646.816	656.383	666.162	676.24	679.813	676.774	658.86	632.343	605.507	571.894	518.995
2021-07-13	CST	476.206	448.936	430.063	418.716	415.435	432.856	471.251	485.896	496.687	522.876	549.307	571.611	592.841	607.56	602.457	608.216	619.117	619.394	611.423	598.505	591.866	584.869	554.494	503.945
2021-07-14	CST	465.959	438.902	421.33	408.91	402.541	414.398	449.826	478.286	485.757	496.029	520.102	549.527	565.369	576.389	586.735	596.351	604.709	602.798	598.637	583.901	565.336	548.932	521.591	482.165
2021-07-15	CST	450.594	427.982	413.449	406.264	407.604	427.076	459.444	496.714	517.116	542.289	570.678	595.158	610.517	627.139	623.648	629.874	638.245	619.252	607.119	599.992	584.361	565.077	531.396	483.756
2021-07-16	CST	453.564	440.451	431.468	423.569	425.429	438.417	466.878	507.911	538.841	571.838	605.264	634.611	651.347	664.129	669.678	674.784	679.155	675.948	663.962	639.437	608.913	584.616	552.976	507.606
2021-07-17	CST	471.217	447.61	429.229	415.913	409.119	410.106	416.779	441.838	480.09	516.599	550.337	580.022	596.834	609.585	620.09	627.529	636.045	643.019	633.439	617.329	591.204	566.048	540.534	499.079
2021-07-18	CST	463.524	438.723	423.283	413.619	407.507	404.322	405.415	430.458	466.957	510.634	554.011	587.382	608.401	628.666	641.74	652.8	667.022	678.511	678.132	665.243	644.38	623.008	591.375	536.355
2021-07-19	CST	491.586	463.708	447.31	437.208	437.673	455.661	477.463	487.465	510.752	551.734	588.889	603.01	609.915	573.067	550.407	529.137	533.021	551.689	556.876	553.207	568.85	578.49	547.69	499.21
2021-07-20	CST	464.094	442.947	428.128	420.476	420.247	436.238	476.004	512.169	532.501	550.964	566.074	585.392	570.41	563.306	571.086	570.589	568.844	568.335	563.009	581.027	592.978	594.264	562.743	518.773
2021-07-21	CST	484.349	455.318	447.916	440.477	442.425	459.018	490.757	524.826	541.554	550.194	531.139	530.126	545.914	575.256	584.778	597.043	590.934	582.451	594.764	603.687	591.966	586.14	556.036	514.747
2021-07-22	CST	481.638	460.162	448.057	439.55	439.598	459.373	480.746	512.345	537.653	568.37	598.574	624.894	653.878	684.76	699.599	699.687	705.622	703.001	710.162	698.347	678.422	664.942	628.533	576.606
2021-07-23	CST	533.648	503.373	486.707	471.588	465.173	482.106	515.861	560.615	591.209	622.83	660.066	686.762	713.19	678.068	639.201	636.975	638.994	691.6	706.196	691.233	670.092	659.808	628.196	580.662
2021-07-24	CST	540.302	503.428	476.659	453.957	439.661	433.164	414.684	438.814	477.372	530.062	566.409	588.571	605.247	615.878	621.674	629.426	639.741	642.902	643.714	622.012	589.688	563.23	534.389	494.072
2021-07-25	CST	460.435	436.469	422.033	410.872	405.486	404.562	406.477	431.602	464.373	502.947	526.846	571.974	600.45	619.686	632.078	642.522	656.146	672.03	675.364	662.205	636.126	614.902	572.87	516.224
2021-07-26	CST	474.002	450.083	431.748	421.377	408.983	424.815	468.022	519.039	546.353	573.926	605.981	632.939	653.739	675.653	692.764	702.721	706.758	705.928	691.334	674.227	658.342	640.334	596.469	547.361
2021-07-27	CST	505.204	475.937	455.164	419.829	388.237	396.58	429.005	473.232	533.729	572.03	596.904	611.858	633.386	649.969	665.993	675.937	691.123	696.007	685.872	680.66	665.855	650.896	608.158	555.585
2021-07-28	CST	518.752	493.454	479.489	472.288	470.455	494.449	532.028	572.963	579.389	603.853	639.222	668.953	678.052	684.655	687.13	697.123	705.697	690.185	671.183	654.042	638.579	626.56	586.199	527.305
2021-07-29	CST	485.233	453.464	434.937	422.977	419.828	435.089	464.574	501.476	517.606	532.915	555.367	570.826	560.226	577.119	601.959	608.661	603.996	604.8	601.073	577.243	571.104	570.955	534.044	479.926
2021-07-30	CST	449.386	431.44	418.499	402.204	406.59	429.708	461.751	492.577	502.503	526.93	545.11	554.748	578.612	604.33	623.523	628.95	634.054	631.456	610.507	592.365	572.152	562.947	532.606	495.35
2021-07-31	CST	459.228	437.218	423.81	414.491	408.986	405.945	412.507	440.707	477.997	514.77	546.102	567.245	577.916	573.557	576.019	585.289	591.375	590.264	579.983	556.175	527.46	510.005	485.693	450.315
2021-08-01	CST	420.558	399.604	388.916	381.895	378.255	376.691	379.268	399.453	429.143	457.724	480.382	499.76	518.553	533.034	548.034	562.477	578.844	592.9	594.639	580.07	559.782	546.25	509.377	462.469
2021-08-02	CST	430.026	412.825	403.143	396.425	398.586	418.926	452.767	487.662	510.202	527.295	548.214	573.207	601.185	622.666	637.132	654.663	668.716	677.305	670.375	651.384	620.375	600.872	553.693	501.728
2021-08-03	CST	458.202	436.128	428.504	418.271	420.423	438.082	471.98	500.088	493.003	538.423	576.41	615.303	641.28	661.735	676.688	686.345	671.846	677.958	691.544	680.342	651.201	632.825	589.488	538.197
2021-08-04	CST	499.174	473.034	455.097	444.679	445.317	463.874	499.812	537.504	549.653	565.858	573.557	599.044	616.981	623.718	623.775	620.929	619.193	618.538	610.806	599.836	588.415	568.779	533.969	493.206
2021-08-05	CST	465.632	449.626	436.573	428.351	429.099	449.236	479.436	508.035	537.229	559.311	573.479	575.164	588.292	589.825	593.777	591.246	598.24	604.925	591.482	565.256	558.1	557.498	521.41	477.794
2021-08-06	CST	447.31	427.862	415.936	409.67	409.982	424.826	449.094	477.25	501.332	501.458	518.356	536.306	546.548	560.028	573.118	574.769	580.438	580.069	562.576	547.49	531.469	525.373	493.498	453.166
2021-08-07	CST	414.546	395.701	384.348	377.674	373.598	376.371	382.682	404.047	435.154	465.466	492.28	519.014	541.94	557.979	567.364	579.885	587.535	590.223	578.279	558.162	509.476	486.835	474.361	452.232
2021-08-08	CST	428.038	406.151	393.793	385.068	379.666	379.939	383.194	404.607	436.153	465.213	491.647	518.691	536.97	555.893	578.801	602.457	624.297	629.626	626.785	612.939	583.227	560.423	511.829	459.186
2021-08-09	CST	420.764	400.39	395.37	391.922	392.748	413.27	449.042	493.391	526.329	563.218	602.105	627.994	646.163	662.539	674.347	680.419	686.326	689.405	683.126	661.47	632.156	609.767	549.206	485.747
2021-08-10	CST	452.197	431.209	422.908	405.83	396.17	413.044	447.576	482.189	508.81	530.701	553.532	578.009	593.164	604.575	621.55	635.28	647.566							

2021-08-18	CST	532.585	509.63	489.291	476.564	472.564	491.74	514.674	530.575	551.22	579.882	610.469	644.564	673.293	694.166	711.132	725.159	740.326	752.76	736.563	717.826	702.814	686.332	632.223	579.055
2021-08-19	CST	561.987	539.136	520.726	508.348	502.281	512.987	549.168	583.579	593.805	619.514	649.058	676.033	699.84	718.476	729.067	697.97	643.501	643.59	693.044	698.938	674.683	651.975	598.161	546.134
2021-08-20	CST	511.306	483.632	465.186	453.111	450.986	466.244	501.465	544.261	562.994	559.141	562.384	569.786	574.754	585.387	590.497	591.06	590.076	581.44	572.114	548.048	518.982	503.265	472.701	447.101
2021-08-21	CST	431.649	412.108	398.532	374.521	360.362	367.595	377.688	402.789	435.675	458.615	473.78	482.766	482.224	482.634	484.515	489.948	489.614	489.673	487.719	481.396	476.709	467.022	438.164	417.435
2021-08-22	CST	396.727	384.992	377.708	373.036	372.027	375.41	353.696	348.436	370.086	408.331	460.914	489.934	498.414	490.544	487.344	490.746	494.245	505.836	507.02	497.684	494.592	484.571	456.89	426.963
2021-08-23	CST	405.613	394.139	387.909	385.182	387.654	410.463	449.841	486.287	501.946	520.592	537.264	552.833	564.622	563.561	582.278	596.989	598.455	602.999	597.569	577.555	563.93	550.255	502.431	458.626
2021-08-24	CST	425.354	386.779	368.27	372.869	391.535	418.862	462.777	491.981	503.941	513.11	533.372	558.625	570.977	586.571	602.122	620.347	633.203	652.628	645.342	627.358	619.924	594.791	541.977	491.025
2021-08-25	CST	430.79	403.435	407.104	379.725	380.9	400.719	440.229	468.895	475.407	491.781	505.075	517.397	528.67	537.774	546.357	552.117	556.876	554.87	533.779	519.886	516.707	510.111	470.362	427.773
2021-08-26	CST	403.992	385.846	371.761	363.905	368.507	394.483	445.677	472.879	460.499	445.924	447.175	472.107	492.261	504.724	504.964	503.72	500.435	500.698	499.118	495.723	499.968	490.822	455.806	422.737
2021-08-27	CST	403.316	389.196	380.378	377.788	381.292	398.212	441.666	475.01	482.841	488.911	495.989	498.901	490.46	489.506	489.022	489.132	490.061	497.138	498.601	499.813	497.489	485.189	460.763	429.893
2021-08-28	CST	407.319	394.199	385.297	381.67	381.071	384.031	394.08	414.232	440.062	461.805	471.055	483.513	495.121	498.543	494.336	500.752	499.7	499.884	495.489	488.188	489.663	469.511	439.732	417.246
2021-08-29	CST	394.965	381.454	373.501	369.18	368.611	369.905	380.302	394.667	425.768	456.122	481.993	499.42	512.001	518.349	520.26	528.069	541.48	556.414	557.138	542.306	531.54	510.608	467.693	427.338
2021-08-30	CST	398.267	385.151	378.676	378.074	381.364	401.351	444.945	476.059	488.139	502.924	515.51	532.616	553.432	559.687	558.486	574.257	592.799	593.61	582.56	562.483	552.224	528.213	481.786	436.661
2021-08-31	CST	411.132	396.635	388.136	382.663	383.682	401.562	428.648	460.94	469.857	477.69	500.113	526.476	533.61	544.922	557.675	572.138	585.548	594.497	594.219	577.743	562.434	538.966	492.173	451.189
2021-09-01	CST	446.14	425.29	413.137	406.433	408.694	430.086	475.962	502.392	500.115	510.568	526.64	546.376	565.805	587.145	592.271	592.92	569.383	573.591	572.909	565.327	579.471	562.349	516.413	480.104
2021-09-02	CST	445.984	425.801	422.107	415.411	417.715	436.515	484.119	510.816	514.299	528.071	535.315	531.463	527.343	511.365	492.536	490.112	493.367	500.819	503.351	503.145	508.449	489.632	459.223	426.337
2021-09-03	CST	405.589	395.481	385.017	380.766	382.008	403.543	442.028	477.114	479.004	486.437	499.062	507.435	506.629	483.199	467.672	475.831	511.21	527.737	517.613	500.342	497.727	481.046	454.243	428.21
2021-09-04	CST	407.801	391.485	382.173	376.643	372.632	374.827	379.772	391.426	412.292	444.195	462.995	470.359	478.785	485.834	488.552	491.376	495.202	497.489	482.789	467.694	464.219	448.263	422.466	399.486
2021-09-05	CST	373.214	367.858	362.548	358.061	355.191	360.63	370.908	387.91	411.785	432.54	445.356	457.017	454.932	450.347	455.3	462.483	477.245	479.849	474.438	464.17	465.176	450.485	423.96	398.223
2021-09-06	CST	379.083	368.138	363.824	359.913	359.59	363.408	375.216	392	420.393	444.459	461.701	478.167	491.119	507.752	525.394	537.179	547.079	553.746	560.143	561.352	554.751	516.018	459.809	417.442
2021-09-07	CST	393.003	380.406	372.843	371.914	376.24	401.303	460.138	493.045	489.066	499.3	511.687	531.278	541.302	549.806	548.966	549.745	556.471	561.031	556.466	536.454	530.857	508.287	468.447	415.289
2021-09-08	CST	382.214	366.766	359.144	352.646	355.647	380.006	435.936	477.924	466.993	467.695	473.626	484.928	491.636	489.178	495.957	502.963	511.372	517.772	519.284	523.023	517.431	484.857	447.014	411.367
2021-09-09	CST	395.661	383.442	371.3	366.162	364.809	387.911	430.983	461.605	462.73	467.863	473.969	482.092	487.606	497.713	503.934	508.33	502.596	513.741	516.985	513.672	517.998	497.221	458.35	417.48
2021-09-10	CST	393.736	380.272	387.367	388.846	393.254	414.145	462.744	490.873	495.25	505.376	513.002	527.388	537.782	552.974	565.232	580.466	588.268	587.975	573.947	544.084	518.006	503.807	493.372	464.443
2021-09-11	CST	441.833	425.386	408.855	399.988	398.165	398.38	408.161	425.827	452.448	468.268	482.856	490.094	492.104	494.04	496.711	495.408	496.153	490.78	484.579	477.331	480.956	465.032	439.623	414.829
2021-09-12	CST	395.405	383.567	372.971	369.676	369.536	374.288	390.557	410.098	434.92	453.917	466.452	477.382	483.481	488.053	489.858	496.216	508.757	516.65	521.635	515.456	519.156	489.52	450.636	415.41
2021-09-13	CST	391.028	371.201	371.038	377.062	382.961	406.357	462.109	494.185	497.718	506.764	512.437	519.691	519.692	509.281	491.128	488.132	495.953	503.708	502.724	509.099	501.663	479.208	443.586	414.58
2021-09-14	CST	396.741	383.546	379.53	377.411	380.449	405.87	457.652	463.674	430.007	423.259	433.843	442.692	446.203	452.956	454.268	452.646	457.108	454.699	452.941	450.872	456.863	431.659	393.94	358.82
2021-09-15	CST	337.615	326.108	337.349	355.71	366.587	397.14	460.478	464.19	446.735	446.376	449.8	454.956	458.538	461.166	460.217	459.092	469.976	477.77	481.353	481.305	487.479	471.505	440.954	418.319
2021-09-16	CST	401.647	387.485	381.682	385.053	385.598	408.872	462.083	495.041	477.351	474.041	482.226	454.949	468.443	483.896	486.007	475.9	488.753	504.356	505.692	504.013	509.287	486.885	453.031	423.732
2021-09-17	CST	403.593	391.625	384.352	380.624	384.13	410.353	459.236	488.707	484.682	482.593	486.69	486.932	485.93	487.257	491.597	486.132	446.751	447.879	466.613	477.349	469.382	470.557	445.167	422.092
2021-09-18	CST	406.6	396.108	388.4	381.774	381.213	389.966	407.851	428.978	453.16	467.639	469.63	474.078	471.071	470.348	475.17	477.095	487.618	494.419	491.746	483.166	482.079	470.099	449.291	428.787
2021-09-19	CST	409.304	396.477	389.775	383.966	385.52	392.855	390.582	398.641	432.538	472.766	500.929	515.27	523.22	526.758	531.894	537.764	548.16	561.793	563.084	560.452	557.892	527.184	482.268	442.796
2021-09-20	CST	415.226	396.358	386.817	378.641	380.368	402.211	453.48	496.211	504.699	500.692	504.627	506.639	498.392	500.606	499.58	492.803	494.729	502.658	507.235	512.23	510.905	484.483	451.627	420.023
2021-09-21	CST	401.398	389.658	381.007	379.703	383.762	408.097	463.667	495.62	489.689	488.482	491.053	494.294	490.496	495.924	497.011	495.68	501.937	500.43	504.519	492.761	477.576	450.157	414.48	386.896
2021-09-22	CST	366.856	354.824	352.647	351.166	356.418	383.465	438.703	472.853	467.165	462.637	463.78	467.163	467.754	471.818	474.955	478.096	483.101	477.114	488.335	488.879	491.866	463.605	424.484	392.208
2021-09-23	CST	367.009	356.351	350.367	347.227	351.621	377.45	433.95	466.924	459.758	454.487	456.627	457.958	467.599	466.44	479.794	501.313	525.082	530.329	524.581	526.237	523.597	500.134	465.524	430.378
2021-09-24	CST	411.345	393.323	373.888	367.764	380.228	400.142	457.446	495.081	490.416	495.1	498.408	505.43	485.436	489.763	493.709	492.909	492.508	494.94	487.729	488.085	487.712	471.244	445.81	419.382
2021-09-25	CST	402.636	390.844	382.482	383.094	384.864	392.726	388.264	398.435	434.927	463.716	474.573	474.082	469.352	468.1	468.568	464.651	468.828	475.759	471.071	473.458	473.461	449.942	427.103	407.35
2021-09-26	CST	391.812	381.586	377.45	370.862	366.444	372.027	386.22	405.761	436.289	457.688	468.434	480.415	489.866	484.927	483.716	494.938	519.199</							

2021-10-04	CST	375.136	368.401	363.48	359.26	364.807	390.968	445.583	482.783	477.812	478.137	489.544	502.252	512.741	521.528	526.813	541.128	554.204	560.228	555.607	569.534	551.079	517.029	478.23	440.245
2021-10-05	CST	416.638	401.528	392.598	388.43	395.379	420.017	475.336	511.206	503.185	510.187	521.265	531.088	539.182	548.877	555.18	563.948	571.676	574.832	570.598	573.616	561.277	527.999	488.58	451.596
2021-10-06	CST	426.016	410.586	403.112	399.604	403.338	427.785	482.099	513.07	496.964	492.386	502.271	514.214	522.932	533.104	542.847	552.491	557.452	558.975	544.482	543.36	530.382	500.129	463.083	430.339
2021-10-07	CST	405.866	392.432	384.128	377.963	377.43	392.854	448.4	487.619	482.818	490.173	507.213	519.447	526.629	532.422	533.23	533.548	534.597	534.624	527.893	541.443	534.641	504.237	465.142	436.814
2021-10-08	CST	396.862	374.501	368.874	393.174	404.759	423.809	474.712	509.955	498.684	490.932	504.041	519.764	533.588	540.63	538.207	524.681	517.515	522.41	522.818	528.584	510.671	489.342	460.844	431.17
2021-10-09	CST	412.462	398.75	373.838	359.846	357.064	359.142	374.796	399.898	425.799	446.178	457.851	461.768	458.603	455.854	470.226	477.569	480.325	480.515	470.337	462.031	446.327	431.8	422.833	411.239
2021-10-10	CST	395.19	385.689	378.057	374.85	370.975	373.981	387.857	411.061	433.178	445.533	452.557	456.536	458.809	454.56	448.768	465.395	475.593	489.371	495.876	504.235	487.491	463.553	432.051	403.63
2021-10-11	CST	386.45	380.113	361.435	346.809	363.478	397.509	455.116	496.379	491.798	494.797	498.845	502.516	504.56	510.69	510.496	514.199	513.919	514.901	516.243	534.505	520.342	494.297	461.316	433.393
2021-10-12	CST	416.929	408.705	402.859	401.139	408.557	438.56	496.862	540.829	531.291	528.002	523.467	521.649	510.77	487.687	479.214	485.118	487.431	492.991	513.165	540.766	529.41	530.616	500.271	467.043
2021-10-13	CST	444.438	428.232	404.586	392.45	389.833	416.897	471.732	524.884	525.305	524.537	524.794	527.348	525.554	526.714	521.343	520.426	522.767	531.232	535.777	544.977	536.36	501.051	435.282	401.487
2021-10-14	CST	397.918	404.565	418.098	426.495	432.238	459.51	514.942	554.052	527.221	522.845	528.414	528.792	518.784	515.531	527.657	530.105	539.395	542.942	551.082	566.2	551.604	524.106	490.46	464.276
2021-10-15	CST	447.027	437.789	434.521	431.515	426.611	418.152	462.072	502.362	506.397	536.737	549.498	541.588	529.603	530.201	527.778	521.569	523.98	521.102	525.451	541.355	496.049	468.092	471.742	472.806
2021-10-16	CST	461.499	451.999	447.773	449.448	453.655	464.77	486.646	510.782	529.492	528.729	517.632	501.593	489.008	481.629	475.094	473.058	474.913	457.569	439.73	462.051	485.23	488.513	473.532	454.761
2021-10-17	CST	441.21	433.195	432.372	433.45	436.739	446.781	465.421	486.554	505.064	508.526	501.055	495.701	487.275	483.634	479.776	477.388	487.135	497.812	510.318	533.6	524.653	500.537	465.231	438.285
2021-10-18	CST	423.995	418.713	417.057	418.993	425.455	455.172	515.413	557.158	540.584	520.622	516.243	525.955	526.041	525.737	518.904	506.4	516.014	528.57	538.121	548.667	532.582	506.298	470.338	402.579
2021-10-19	CST	373.766	370.608	374.929	375.833	383.704	410.237	468.351	506.147	490.821	496.747	509.626	516.093	514.043	515.512	513.69	512.148	521.107	528.553	540.729	544.933	527.859	502.588	475.659	454.022
2021-10-20	CST	440.687	431.703	424.339	424.408	431.972	459.601	507.966	549.788	541.976	538.177	542.137	542.369	537.756	536.616	527.421	534.784	546.97	555.901	574.603	577.764	569.061	566.56	544.532	520.459
2021-10-21	CST	505.442	496.272	490.927	492.329	501.234	530.701	559.545	586.824	579.681	563.085	556.283	557.12	548.375	544.154	534.801	533.445	530.301	540.286	568.116	576.539	563.436	544.249	511.319	490.298
2021-10-22	CST	487.205	475.74	478.271	488.821	495.198	522.75	563.054	591.392	594.986	586.262	577.288	566.991	556.079	549.969	539.714	532.104	531.086	538.308	556.301	565.021	564.024	557.63	540.59	524.186
2021-10-23	CST	511.616	502.514	497.142	497.639	501.252	509.343	531.919	561.922	581.546	591.156	588.8	581.64	570.73	555.97	547.277	536.926	531.592	542.936	570.4	583.34	576.91	559.307	536.841	518.405
2021-10-24	CST	504.911	494.678	495.595	496.715	499.035	506.051	523.958	550.634	567.206	575.72	582.668	584.159	578.297	561.213	556.29	553.024	559.34	575.67	594.224	601.332	583.606	560.482	530.666	505.494
2021-10-25	CST	492.493	484.78	480.961	479.589	489.468	524.573	585.955	633.111	622.939	616.372	610.461	604.281	590.58	576.636	561.604	541.633	536.1	562.897	604.879	616.887	601.142	584.278	551.367	523.682
2021-10-26	CST	508.54	504.312	491.237	471.925	478.76	535.027	598.81	639.052	632.786	629.412	616.501	607.821	587.54	578.635	571.268	575.028	579.993	589.782	603.288	604.346	588.361	560.248	528.617	502.218
2021-10-27	CST	481.243	470.896	464.217	462.778	469.293	496.489	546.021	588.002	587.812	569.53	548.978	560.54	568.914	554.516	542.956	541.953	550.067	556.942	564.248	560.789	546.838	522.127	494.027	467.491
2021-10-28	CST	448.379	439.946	431.28	436.424	446.212	481.453	542.568	589.914	583.47	581.058	582.252	572.394	556.265	548.188	539.612	531.15	535.752	540.132	557.333	574.354	566.803	551.192	525.666	504.012
2021-10-29	CST	489.634	485.291	481.7	482.738	484.934	510.978	566.225	609.417	602.607	582.014	584.238	578.689	548.648	537.5	527.606	517.546	514.051	518.912	534.107	539.743	533.961	518.665	496.409	477.193
2021-10-30	CST	462.428	452.853	446.856	450.212	455.956	468.256	493.692	526.21	549.867	558.39	558.148	560.487	552.023	541.36	531.046	525.491	526.732	531.062	555.62	570.564	564.031	547.037	532.577	518.602
2021-10-31	CST	507.571	502.636	498.088	495.828	496.832	501.695	518.022	543.814	565.619	577.754	592.131	593.822	589.951	580.808	580.688	582.743	588.048	587.604	593.936	598.852	591.573	575.354	548.967	522.714
2021-11-01	CST	505.89	498.184	496.06	493.256	507.793	552.016	608.035	651.19	646.091	642.658	635.964	629.837	619.002	621.956	617.306	618.031	610.14	608.23	622.082	631.289	632.963	614.019	562.34	517.45
2021-11-02	CST	501.227	493.319	496.156	520.019	544.379	576.159	600.376	576.566	567.941	566.33	663.906	673.878	659.434	648.385	632.518	597.057	585.82	596.953	617.187	631.17	652.047	631.427	599.646	574.127
2021-11-03	CST	561.881	533.008	529.066	527.034	535.891	568.564	627.295	675.047	665.091	639.123	615.1	607.988	602.9	596.547	576.096	561.077	560.445	580.771	601.522	604.105	603.814	592.699	564.086	540.509
2021-11-04	CST	528.233	513.998	506.782	514.405	530.172	560.762	618.551	643.54	607.928	592.985	597.461	595.052	577.878	557.312	550.303	528.433	525.127	553.225	593.363	613.276	606.446	580.546	555.496	532.896
2021-11-05	CST	520.17	515.941	512.967	512.433	517.951	545.989	600.736	638.398	625.246	617.383	610.342	584.639	564.044	562.75	565.429	558.242	560.337	562.937	574.619	569.638	552.08	532.413	509.636	490.547
2021-11-06	CST	488.487	481.444	475.518	481.816	485.957	497.894	520.781	545.354	561.73	561.749	548.374	530.862	519.252	510.314	498.446	498.075	494.924	500.658	528.031	539.134	538.758	527.247	509.208	498.156
2021-11-07	CST	484.545	475.218	470.231	474.057	473.415	480.885	496.718	513.115	534.588	550.093	550.778	539.167	530.691	520.616	471.681	456.804	472.434	512.518	559.514	568.27	562.626	548.232	534.021	505.988
2021-11-08	CST	486.099	476.836	482.824	486.815	488.739	501.079	541.559	602.502	634.25	634.45	632.035	620.11	602.242	575.395	566.87	553.931	544.942	558.323	589.12	625.16	619.412	605.839	581.354	552.439
2021-11-09	CST	533.016	525.426	523.961	521.312	525.516	531.898	557.441	614.787	644.715	620.567	601.693	581.989	567.934	547.802	531.106	522.662	523.662	542.798	589.23	594.003	587.215	573.648	560.933	541.253
2021-11-10	CST	522.908	509.878	504.078	504.209	504.65	518.778	547.296	591.505	622.934	615.062	613.166	617.659	615.409	597.613	598.469	596.476	593.428	605.333	619.228	610.645	600.443	581.343	560.531	536.419
2021-11-11	CST	515.033	504.315	498.167	494.388	496.67	498.015	537.236	582.165	617.757	620.977	628.573	631.435	633.764	631.295	630.496	628.271	607.246	603.654	619.18	624.18	633.846	621.694	595.196	569.595
2021-11-12	CST	550.215	544.057	540.931	544.168	544.783	554.401	581.097	620.576	648.502	655.276	658.759	658.869	653.474	640.148	631.025	620.939	618.							

2021-11-20	CST	588.979	573.921	564.507	541.868	543.686	549.202	567.667	592.516	623.627	633.697	620.632	605.461	591.649	578.611	566.59	555.014	557.524	583.381	621.143	626.189	621.329	614.776	600.318	581.922
2021-11-21	CST	563.303	551.111	542.996	538.62	539.487	547.645	570.802	603.394	635.231	659.136	664.699	665.632	662.963	651.625	636.735	627.146	639.666	675.396	720.739	723.632	720.197	706.446	681.74	650.218
2021-11-22	CST	630.587	619.581	612.563	610.322	608.992	612.924	642.574	700.019	734.96	718.794	708.63	699.031	686.515	667.607	657.596	651.863	652.615	673.105	691.77	693.295	685.132	668.81	650.126	621.815
2021-11-23	CST	599.961	599.201	565.304	568.374	598.268	615.91	640.447	696.147	729.456	707.064	677.437	646.1	610.013	602.363	612.752	602.455	602.213	639.58	670.048	672.989	667.826	658.565	640.206	611.788
2021-11-24	CST	594.172	584.937	581.26	574.953	552.584	561.728	595.595	647.477	681.631	685.496	683.904	659.566	652.75	652.132	662.725	695.129	712.776	734.864	757.486	755.979	751.082	741.639	723.621	700.639
2021-11-25	CST	684.892	669.904	660.512	656.013	657.189	659.567	672.514	691.43	717.408	736.534	733.433	720.44	697.962	661.392	630.14	609.945	608.237	632.668	660.6	668.164	672.745	670.905	657.038	636.527
2021-11-26	CST	620.772	606.686	599.356	595.231	593.684	596.244	610.679	631.832	652.227	656.214	650.9	640.65	631.035	619.727	611.1	601.51	597.866	617.664	636.568	629.361	620.46	602.781	585.306	563.395
2021-11-27	CST	547.124	547.961	545.068	545.647	543.104	545.892	558.03	580.235	606.415	629.81	640.598	642.084	635.776	619.628	601.528	567.272	566.108	591.126	624.62	626.55	622.884	618.49	608.098	595.897
2021-11-28	CST	581.118	572.821	561.778	561.259	563.427	565.683	577.785	595.765	615.701	631.678	641.112	631.818	618.627	601.985	592.996	595.108	608.974	632.398	663.587	660.658	656.249	641.283	617.363	583.933
2021-11-29	CST	555.111	553.643	546.981	542.335	541.636	548.641	577.866	636.071	675.069	659.791	654.708	646.745	637.545	621.117	613.476	607.259	611.074	637.579	685.714	689.066	683.184	669.228	644.022	614.017
2021-11-30	CST	587.797	575.776	572.612	572.124	576.39	562.349	589.392	645.525	660.553	642.96	625.665	615.696	615.661	649.926	637.058	635.259	647.122	671.374	668.343	664.312	656.03	645.002	619.141	577.849
2021-12-01	CST	602.572	573.299	558.225	552.775	549.844	554.389	582.372	636.215	648.763	641.246	635.232	627.823	614.524	640.491	626.069	614.869	611.795	628.398	633.381	627.017	618.515	606.186	583.239	553.002
2021-12-02	CST	564.707	566.509	554.704	551.808	544.336	562.776	593.131	647.959	653.021	623.56	601.541	602.844	556.22	556.302	594.973	649.564	641.218	611.037	610.955	606.944	600.323	593.438	632.652	592.058
2021-12-03	CST	615.714	591.868	573.112	569.876	567.968	571.953	600.79	650.699	628.812	595.964	565.689	645.704	652.466	666.242	646.21	638.42	644.127	665.531	653.889	652.394	645.454	639.902	626.713	604.659
2021-12-04	CST	638.633	614.21	596.354	586.715	589.486	589.166	599.612	617.864	616.27	627.701	631.989	626.092	615.691	657.528	639.898	629.936	631.276	651.631	650.236	646.09	636.982	630.871	608.824	591.282
2021-12-05	CST	624.194	600.058	588.79	586.941	585.525	587.607	596.55	610.052	603.866	620.824	632.965	640.316	644.051	687.536	671.509	663.076	667.18	699.268	706.45	703.243	699.471	687.507	673.817	651.355
2021-12-06	CST	701.989	689.574	689.742	692.445	697.002	710.27	741.929	796.388	793.697	790.357	775.073	751.19	739.152	793.092	789.14	777.262	781.787	814.019	809.818	808.649	802.76	787.98	757.401	721.232
2021-12-07	CST	768.036	745.076	729.213	715.574	710.056	715.582	745.188	797.254	779.055	758.191	740.957	715.527	689.67	736.357	724.908	718.005	730.176	758.71	755.486	754.086	746.289	733.559	706.747	660.237
2021-12-08	CST	696.723	675.435	664.513	651.007	653.631	668.42	704.346	749.776	724.99	727.21	715.019	702.675	698.072	748.974	733.783	725.013	735.313	771.403	770.785	763.099	751.687	737.423	711.645	674.445
2021-12-09	CST	706.527	680.051	661.59	647.369	638.503	642.828	665.998	713.689	719.128	701.44	692.188	682.274	670.838	690.803	671.695	658.257	658.057	682.882	694.714	691.468	685.814	681.236	667.6	642.201
2021-12-10	CST	674.195	654.412	643.546	638.304	636.503	643.348	672.311	723.325	726.806	713.448	702.822	689.858	674.751	661.74	648.186	669.637	685.416	708.832	706.008	696.869	686.827	675.859	661.847	644.47
2021-12-11	CST	631.143	617.83	665.398	671.2	663.529	667.53	680.448	700.883	688.466	701.061	693.08	665.143	647.5	676.926	639.373	625.34	627.02	668.26	678.901	674.558	672.419	662.765	645.376	621.984
2021-12-12	CST	657.52	634.3	618.04	606.765	602.351	606.539	610.269	622.602	626.144	634.274	624.25	612.188	608.224	633.487	615.41	610.403	619.392	642.919	662.493	662.066	655.719	640.864	621.723	594.724
2021-12-13	CST	615.381	591.956	580.199	578.88	583.28	594.844	626.235	683.651	688.698	671.882	653.205	637.072	630.997	643.366	631.135	632.385	629.053	670.056	678.097	677.301	670.591	661.449	639.284	607.861
2021-12-14	CST	627.492	603.822	596.235	591.408	591.221	599.707	629.488	687.689	698.264	671.957	659.619	645.056	635.06	658.267	646.384	646.54	653.254	680.631	684.403	678.95	671.022	657.173	637.643	605.102
2021-12-15	CST	622.5	596.655	581.486	571.44	566.617	573.823	602.321	595.806	539.087	518.052	553.978	643.688	625.587	668.884	661.448	655.398	670.916	697.455	697.078	695.261	695.659	686.475	668.827	635.614
2021-12-16	CST	621.108	607.549	645.604	655.351	642.894	648.409	697.692	749.907	747.941	763.875	790.38	785.736	768.862	830.525	820.924	818.795	820.57	841.772	821.244	813.07	803.812	791.42	773.976	746.633
2021-12-17	CST	793.513	766.063	743.782	734.558	736.638	740.685	766.656	815.547	812.302	804.778	790.816	755.013	741.169	789.19	771.253	787.656	783.385	798.206	811.276	795.173	780.995	768.381	751.72	730.075
2021-12-18	CST	709.927	693.323	684.12	678.564	676.249	683.228	700.593	715.591	742.448	763.595	776.816	765.272	751.105	735.02	722.181	712.875	720.726	756.94	799.957	806.199	810.48	812.527	801.888	786.404
2021-12-19	CST	768.27	753.747	746.038	739.068	728.582	727.984	732.564	744.364	762.509	777.028	785.533	782.511	778.013	770.012	754.963	749.299	748.664	760.368	779.815	769.353	757.44	739.449	718.312	694.682
2021-12-20	CST	674.505	667.371	670.464	673.876	684.417	699.578	737.086	798.157	840.731	836.558	816.728	799.387	790.337	775.381	771.729	766.426	772.177	808.765	820.757	823.977	815.524	798.793	776.351	750.202
2021-12-21	CST	789.034	747.731	718.512	707.904	711.786	723.827	742.976	785.698	778.825	747.139	747.271	780.816	752.914	789.229	785.492	771.919	773.084	810.769	817.909	823.629	814.746	802.204	775.129	747.748
2021-12-22	CST	800.155	771.603	754.306	747.14	741.716	743.57	769.157	815.554	802.88	792.385	781.93	767.27	739.006	766.922	738.69	721.396	686.967	701.739	708.661	717.186	725.531	723.542	706.597	683.169
2021-12-23	CST	713.14	681.442	662.236	649.476	645.185	652.913	679.366	716.489	722.72	729.457	727.764	707.954	691.346	720.56	697.147	682.167	680.333	705.484	718.041	712.724	709.884	696.326	679.796	655.231
2021-12-24	CST	682.947	645.711	621.322	604.306	593.012	592.242	601.06	616.899	619.205	637.955	653.07	640.315	612.252	664.342	674.768	668.81	682.415	710.192	731.796	731.857	731.945	733.44	735.08	724.906
2021-12-25	CST	707.596	698.133	695.445	695.568	699.256	704.898	709.189	722.476	746.795	768.303	781.674	787.888	761.771	755.499	738.82	728.369	729.289	745.275	767.556	764.025	758.465	752.083	740.607	725.686
2021-12-26	CST	712.58	704.225	703.367	708.038	712.747	717.952	728.188	746.444	766.478	781.105	788.618	784.076	777.119	764.29	757.974	756.87	762.894	771.999	794.488	788.327	769.115	747.639	723.344	692.554
2021-12-27	CST	665.513	647.834	635.115	626.2	621.264	623.342	634.607	659.657	668.624	688.683	663.64	676.003	684.583	746.675	738.988	734.98	753.812	803.432	818.092	816.034	812.378	802.334	784.142	756.258
2021-12-28	CST	809.611	792.085	778.935	771.643	766.363	765.073	784.477	816.253	806.04	810.555	817.63	821.353	822.373	882.955	858.919	852.234	830.37	771.821	762.397	762.84	755.935	741.453	815.097	814.499
2021-12-29	CST	871.146	846.62	832.736	827.118	824.048	831.397	841.592	853.842	838.989	841.632	831.023	781.842	755.857	838.954	895.356	904.736	877.951							

**Annual Electric Balancing Authority Area and Planning
 Area Report**

For the Year Ending December 31, 2021

Part III - Schedule 2. Forecast Summer and Winter Peak Demand and Annual Net Energy for Load

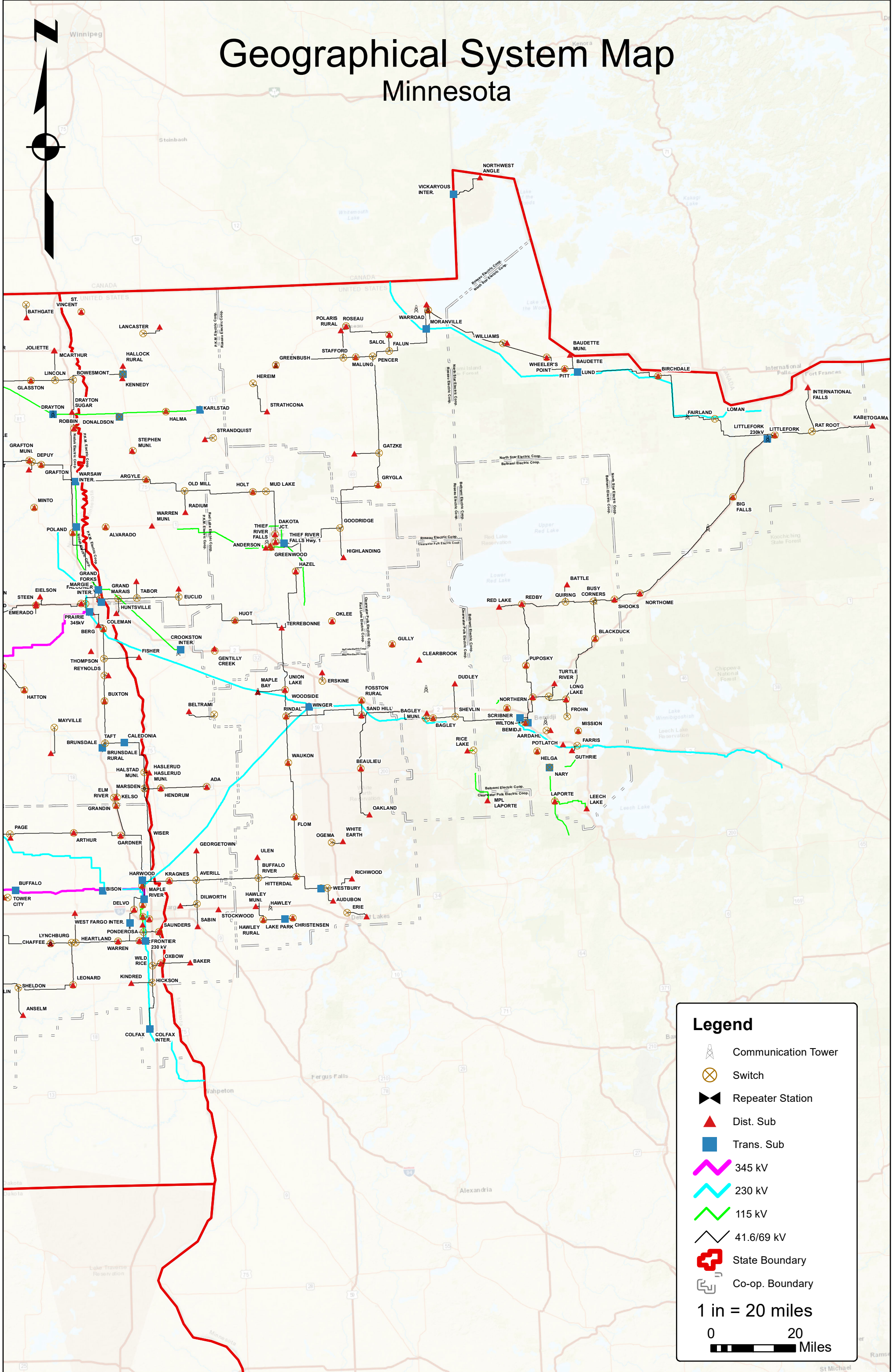
Provide the planning area's forecast summer and winter peak demand, in megawatts, and annual net energy for load, in megawatthours, for the next ten years.

Line No. (a)	Year (b)	Summer Forecast (MW) (c)	Winter Forecast (MW) (d)	Forecast of Annual Net Energy for Load (MWh) (e)
1	2021	752	904	4,785,500
2	2022	760	913	4,833,355
3	2023	767	922	4,881,689
4	2024	775	931	4,930,505
5	2025	783	941	4,979,810
6	2026	790	950	5,029,609
7	2027	798	960	5,079,905
8	2028	806	969	5,130,704
9	2029	814	979	5,182,011
10	2030	822	989	5,233,831

EXHIBIT III

Minnkota Power Cooperative Electric System Maps

Geographical System Map Minnesota



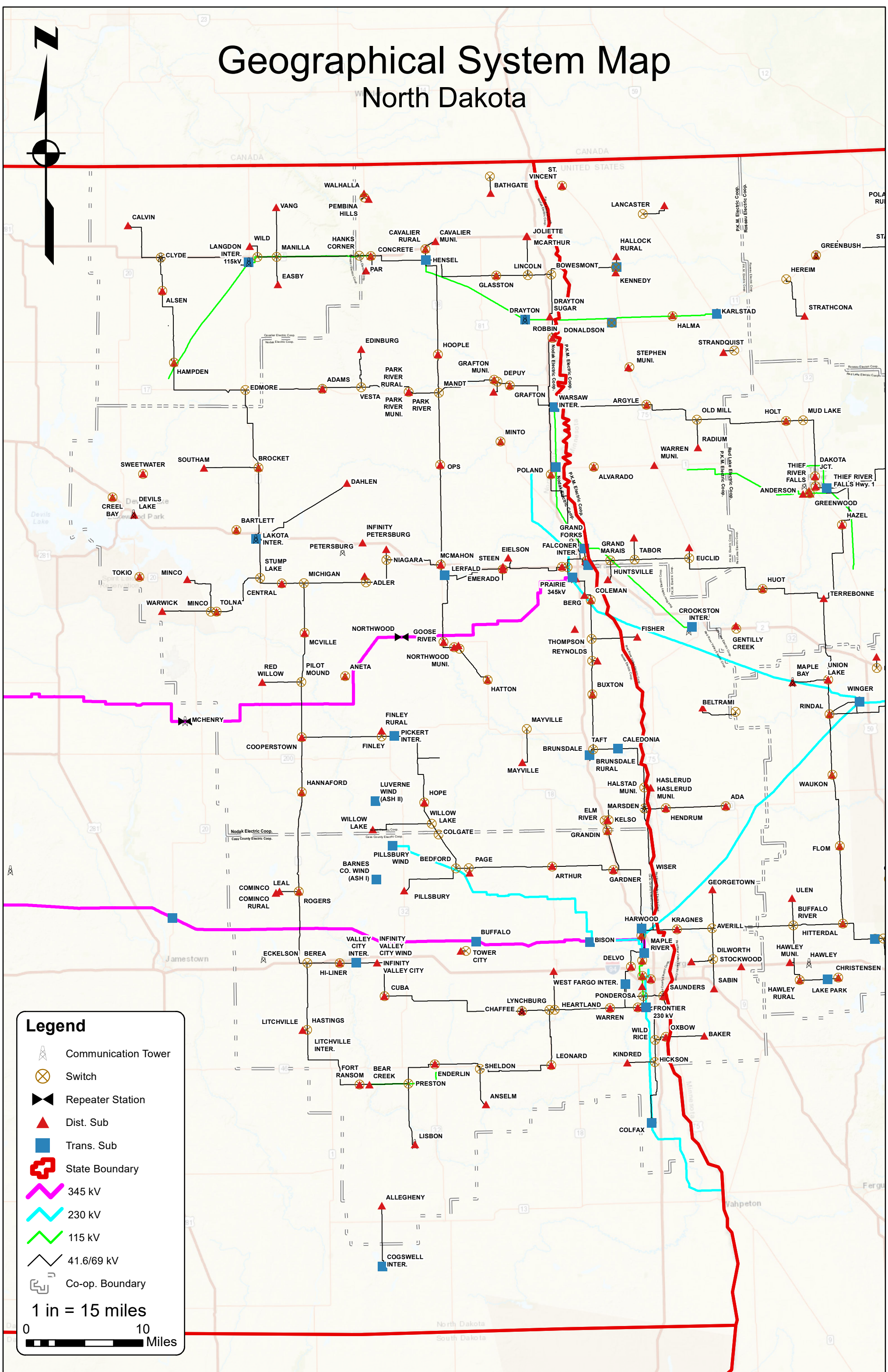
Legend

- Communication Tower
- Switch
- Repeater Station
- Dist. Sub
- Trans. Sub
- 345 kV
- 230 kV
- 115 kV
- 41.6/69 kV
- State Boundary
- Co-op. Boundary

1 in = 20 miles

0 20 Miles

Geographical System Map North Dakota

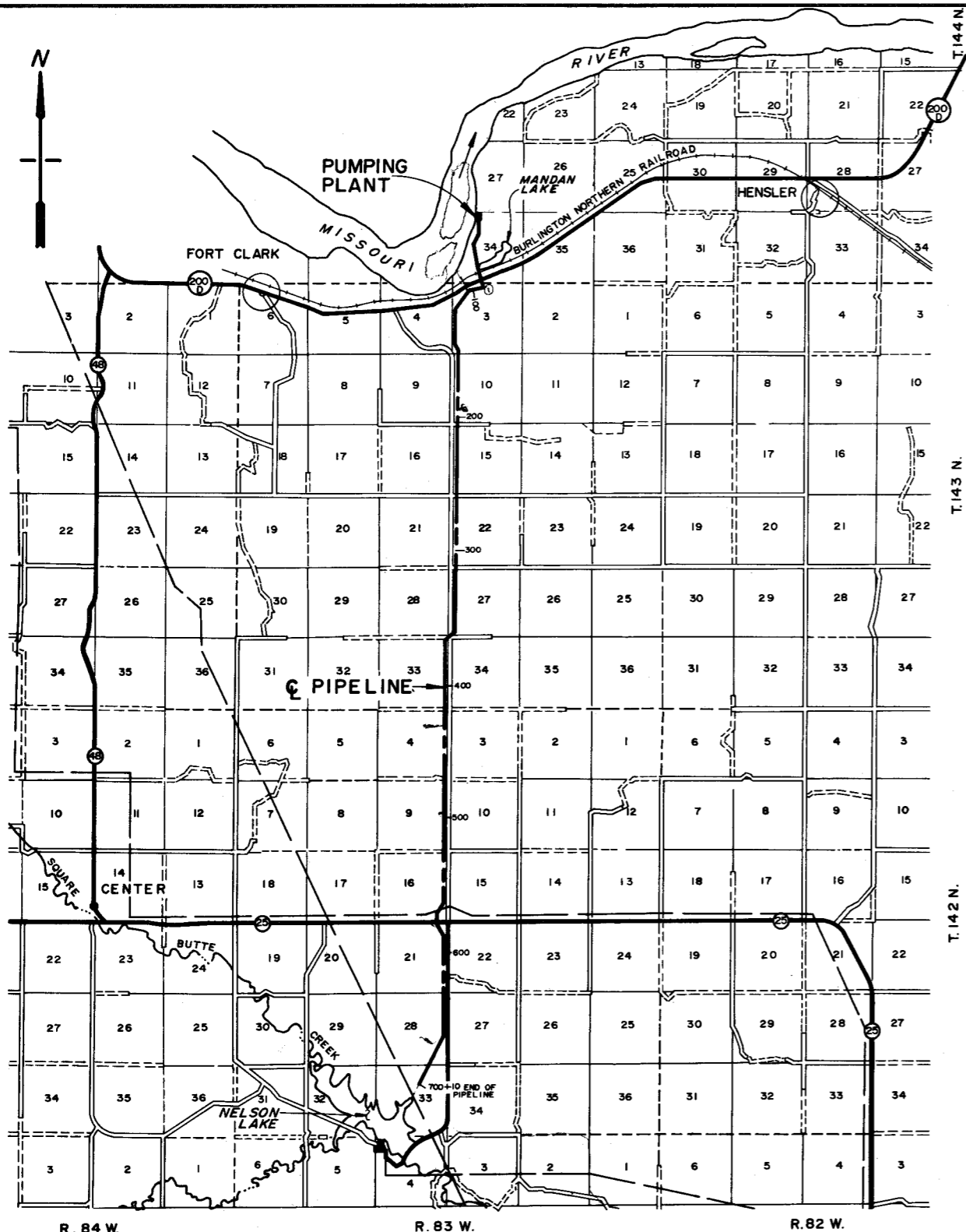


Legend

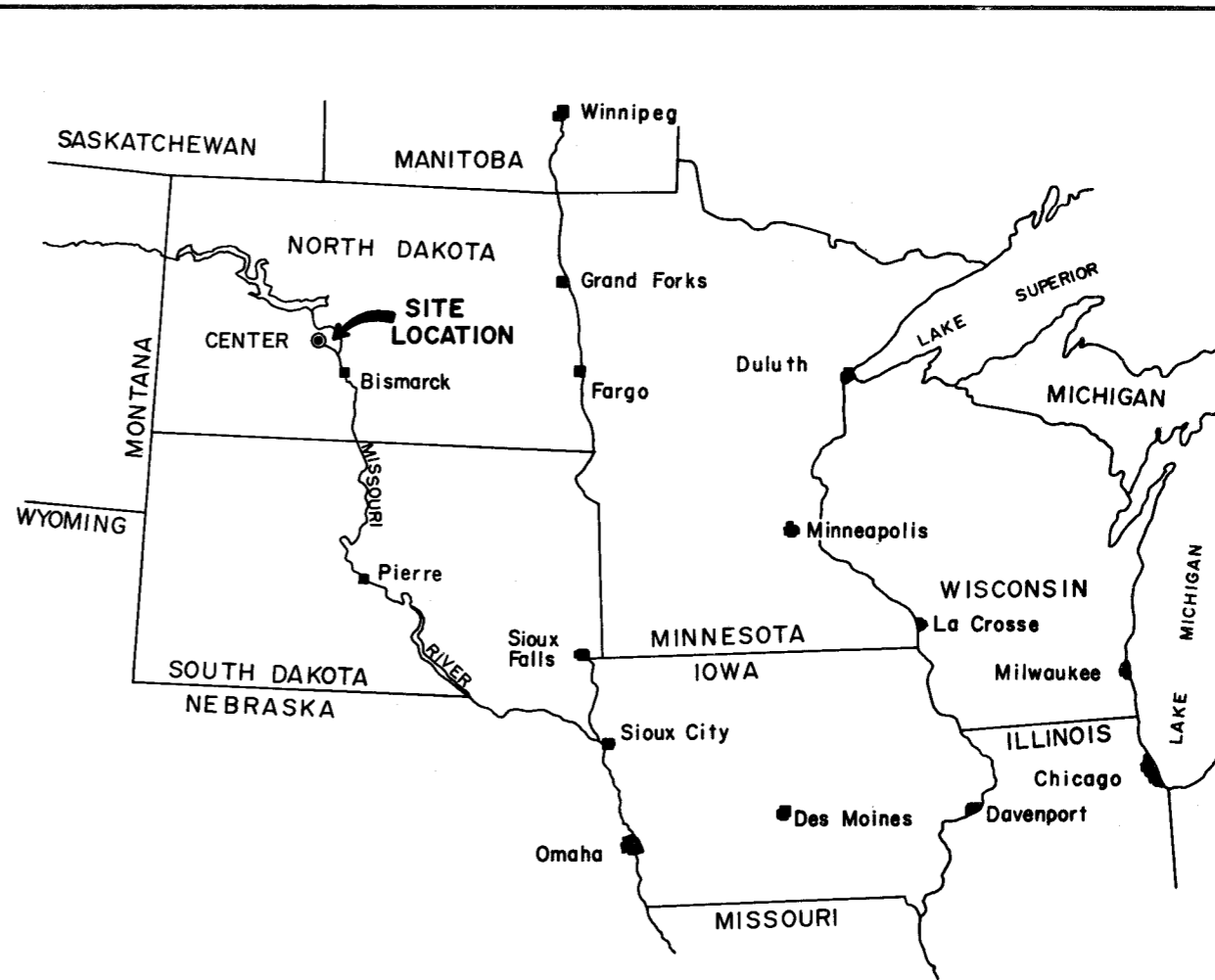
- Communication Tower
- Switch
- Repeater Station
- Dist. Sub
- Trans. Sub
- State Boundary
- 345 kV
- 230 kV
- 115 kV
- 41.6/69 kV
- Co-op. Boundary

1 in = 15 miles

0 10 Miles



SITE LOCATION
(OLIVER COUNTY)
SCALE IN MILES



LOCATION MAP
SCALE IN MILES

DESIGN AND DRAFTING DWG. <i>James W. Chambers</i> DATE 11-21-73 CHK. <i>Mervin L. Litchner</i> DATE 12/27/73		(SEAL) PREPARED UNDER RESPONSIBLE SUPERVISION OF <i>James W. Chambers</i> MICHIGAN PROFESSIONAL REGISTRATION NO. <i>1515</i> PROFESSIONAL REGISTRATION NO. <i>1515</i> AT OFFICES OF COMMONWEALTH ASSOCIATES INC. 209 E. WASHINGTON AVE., JACKSON, MICH.	OWNER AND LOCATION SQUARE BUTTE ELECTRIC COOPERATIVE GRAND FORKS, NORTH DAKOTA MILTON R. YOUNG STATION CENTER, NORTH DAKOTA	TITLE NELSON LAKE MAKEUP SYSTEM LOCATION & SITE MAP				
APPROVED <i>Mervin L. Litchner</i> DATE 12/27/73	JOB NO. 0971-005-032			DRAWING NO. 1	SHEET 1	REV.		
REV. DATE	DESCRIPTION	BY	APPROVED	REV. DATE	DESCRIPTION	BY	APPROVED	DATE