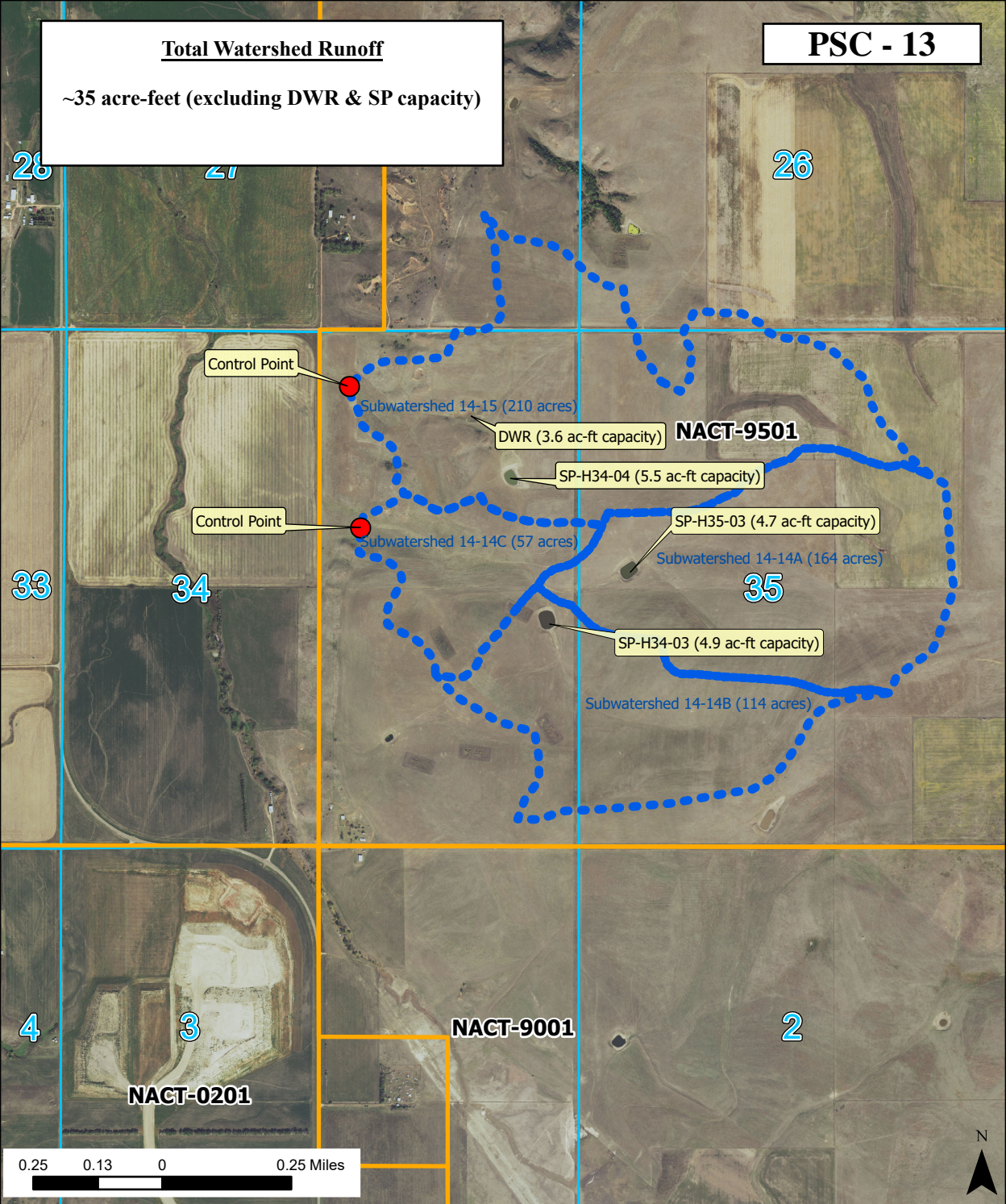


Total Watershed Runoff

~35 acre-feet (excluding DWR & SP capacity)

PSC - 13



Control Point

Subwatershed 14-15 (210 acres)

DWR (3.6 ac-ft capacity)

NACT-9501

SP-H34-04 (5.5 ac-ft capacity)

Control Point

Subwatershed 14-14C (57 acres)

SP-H35-03 (4.7 ac-ft capacity)

Subwatershed 14-14A (164 acres)

SP-H34-03 (4.9 ac-ft capacity)

Subwatershed 14-14B (114 acres)

NACT-9001

NACT-0201

0.25 0.13 0 0.25 Miles

